

8 7 6 5 4 3 2 1

D

D

C

C

B

B

A

A

BRACKET-TV SWING MOUNT  
179241-03-CHT  
SCREW  
000G39-10-12U (8)  
PLATE-MOUNTING,TV  
191131-04-CHT  
NUT  
000D65-10-00U (4)  
BOLT-ADJUSTING  
058786-04-000 (2)  
NUT  
000D39-05-00U (2)  
SCREW  
0MG02U-06-016 (4)  
SPACER-NYLON  
086285-01-000 (4)

CONDUIT-CONVOLUTE  
041953-03-000 (1000 MM)

TIE-WIRE  
008343-04-000 (2)

CLAMP  
010497-03-000 (4)

110V RCP  
(REF) 2

COAX PLATE  
(REF) 1

ANTENNA  
POWER BOOST  
(REF) 1

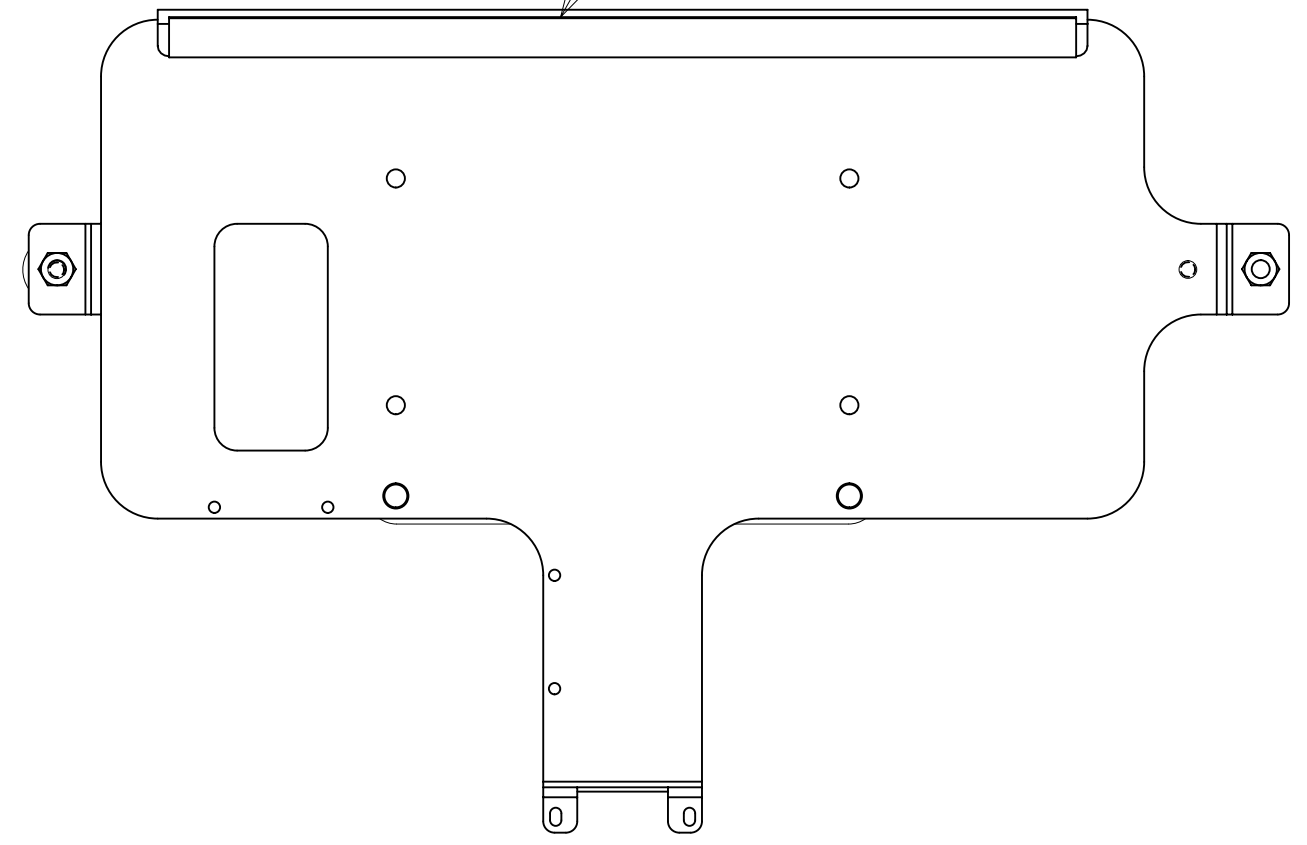
DVD PLAYER W/HDMI OUT  
186774-01-000  
BRACKET-DVD PLAYER  
184814-03-CHT  
SCREW  
000G67-10-12U (6)  
FASTENER-DUAL LOCK  
085774-01-000 (130 MM)  
085774-02-000 (130 MM)

TV-28" FLAT PANEL ELED,HDTV  
195082-01-000

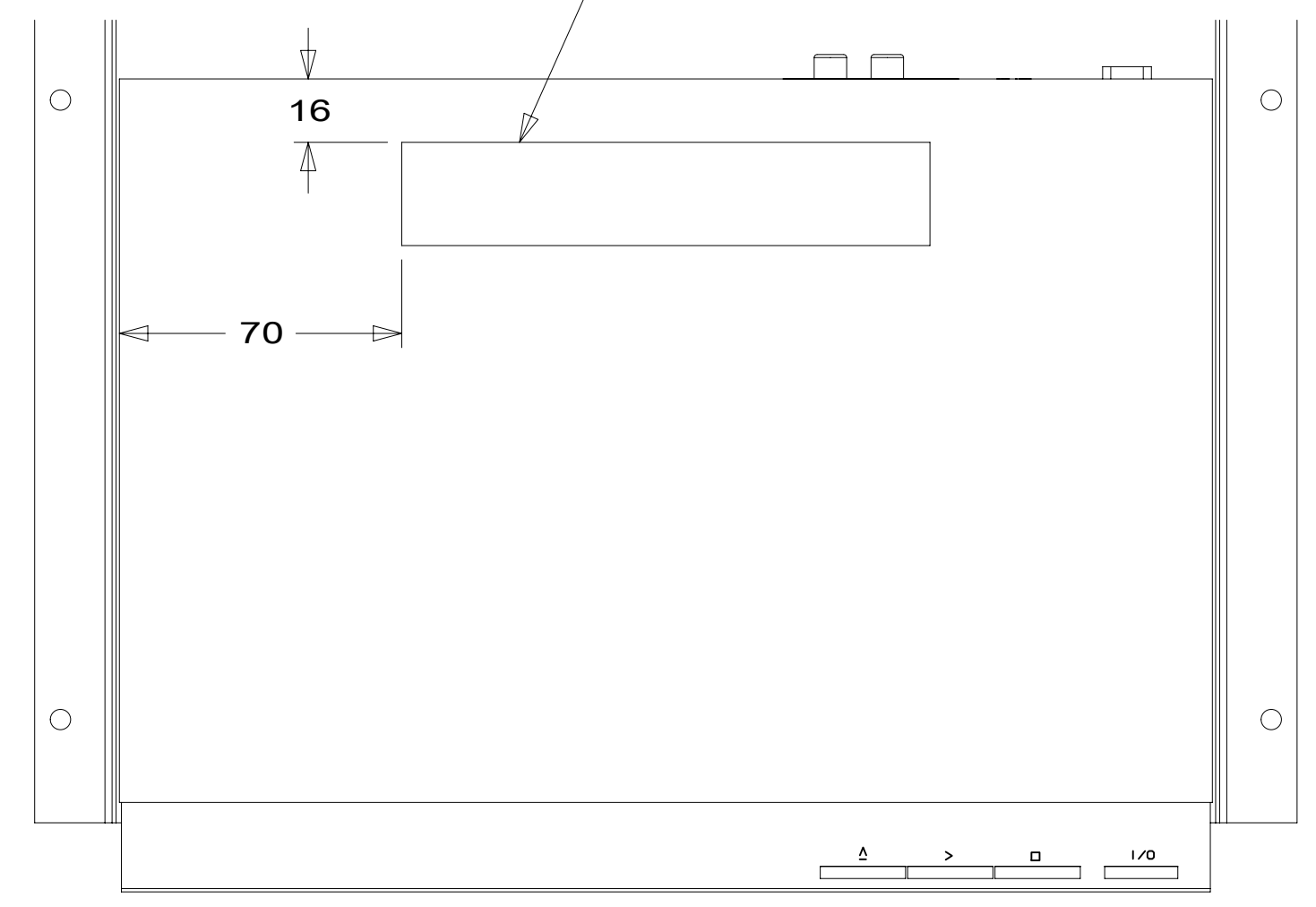
TAPE-FOAM  
076322-22-000  
(400 MM) 4

FASTENER-DUAL LOCK  
(REF) 3

- NOTES:
- 4 PREP SURFACE WITH 87211-01-000.
  - 3 ATTACH FASTENER-DUAL LOCK TO DVD PLAYER POSITIONED AS SHOWN.
  - 2 SEE WIRING INSTL-BODY, 110V FOR ADDITIONAL INFORMATION.
  - 1 SEE WIRING INSTL-BODY, 12V FOR ADDITIONAL INFORMATION.



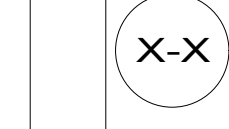
VIEW AC  
(TV NOT SHOWN)



VIEW AA

FOR ELECTRICAL  
TORQUE  
SPECIFICATIONS  
SEE DWG NO.  
128783-01-000

FOR ELECTRICAL  
CALLOUTS  
SEE DWG NO.  
121339-01-000



- 68R TV - FRONT
- 265 CODES/STANDARDS-CSA/CMVSS
- 1B1 CODES/STANDARDS USA

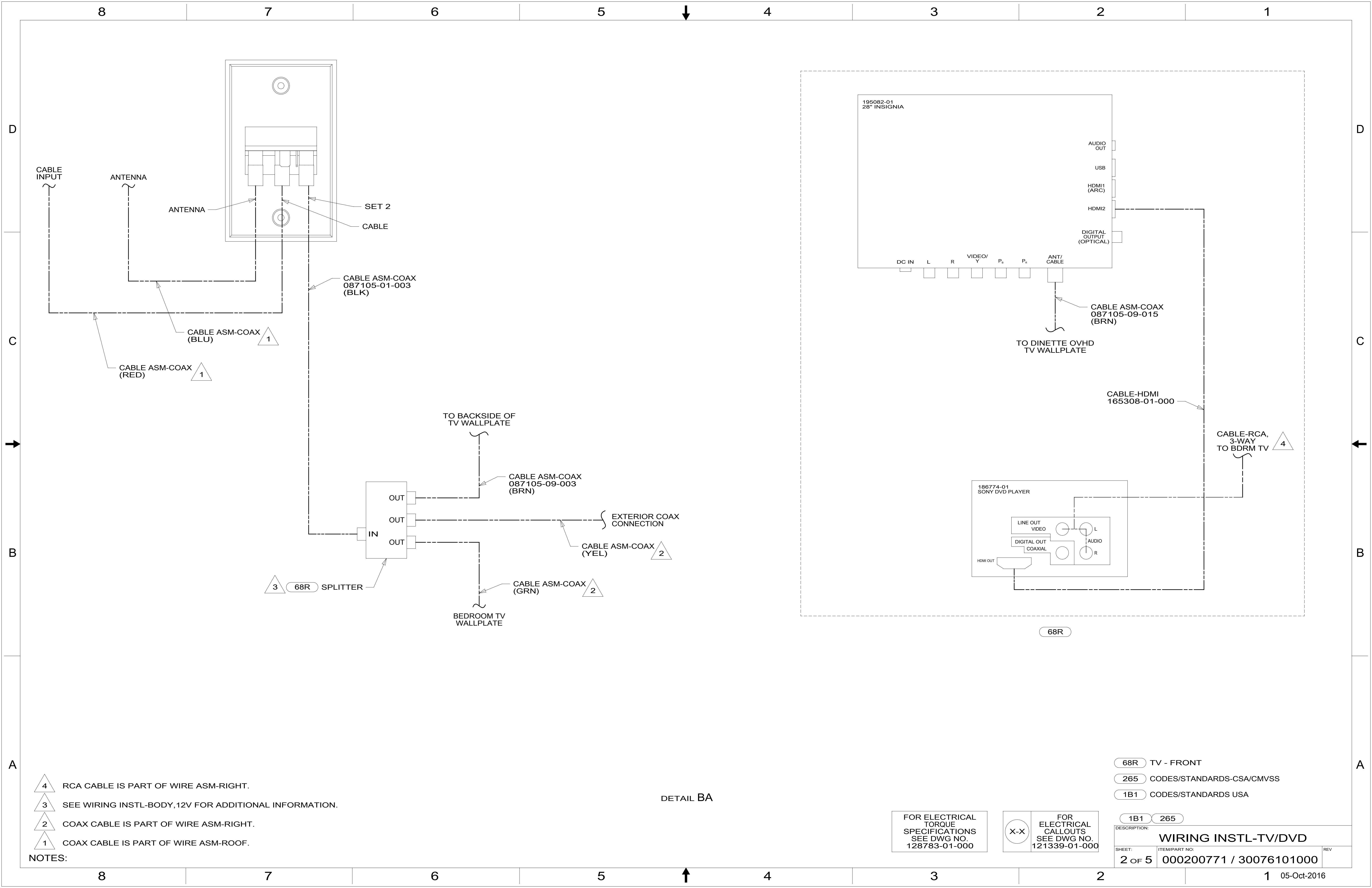
1B1 265 68R



DSNR:		ALL DIMENSIONS ARE IN MILLIMETERS	
DFFR:		MATERIAL:	
UNSPECIFIED TOLERANCES:			
WHOLE DIM (X)	3		
ONE-PLACE (X.X)	1.5		
TWO-PLACE (X.XX)	0.50		
ANGLE	1°		
REFER TO ES0018 FOR FASTENER TIGHTENING GUIDELINES		WEIGHT: (LBS)	FIRST USED:

DESCRIPTION: <b>WIRING INSTL-TV/DVD</b>		
SHEET: 1 OF 5	ITEM/PART NO: 000200771 / 30076101000	REV:

8 7 6 5 4 3 2 1 REF: 1 05-Oct-2016



- NOTES:
- △ 4 RCA CABLE IS PART OF WIRE ASM-RIGHT.
  - △ 3 SEE WIRING INSTL-BODY, 12V FOR ADDITIONAL INFORMATION.
  - △ 2 COAX CABLE IS PART OF WIRE ASM-RIGHT.
  - △ 1 COAX CABLE IS PART OF WIRE ASM-ROOF.

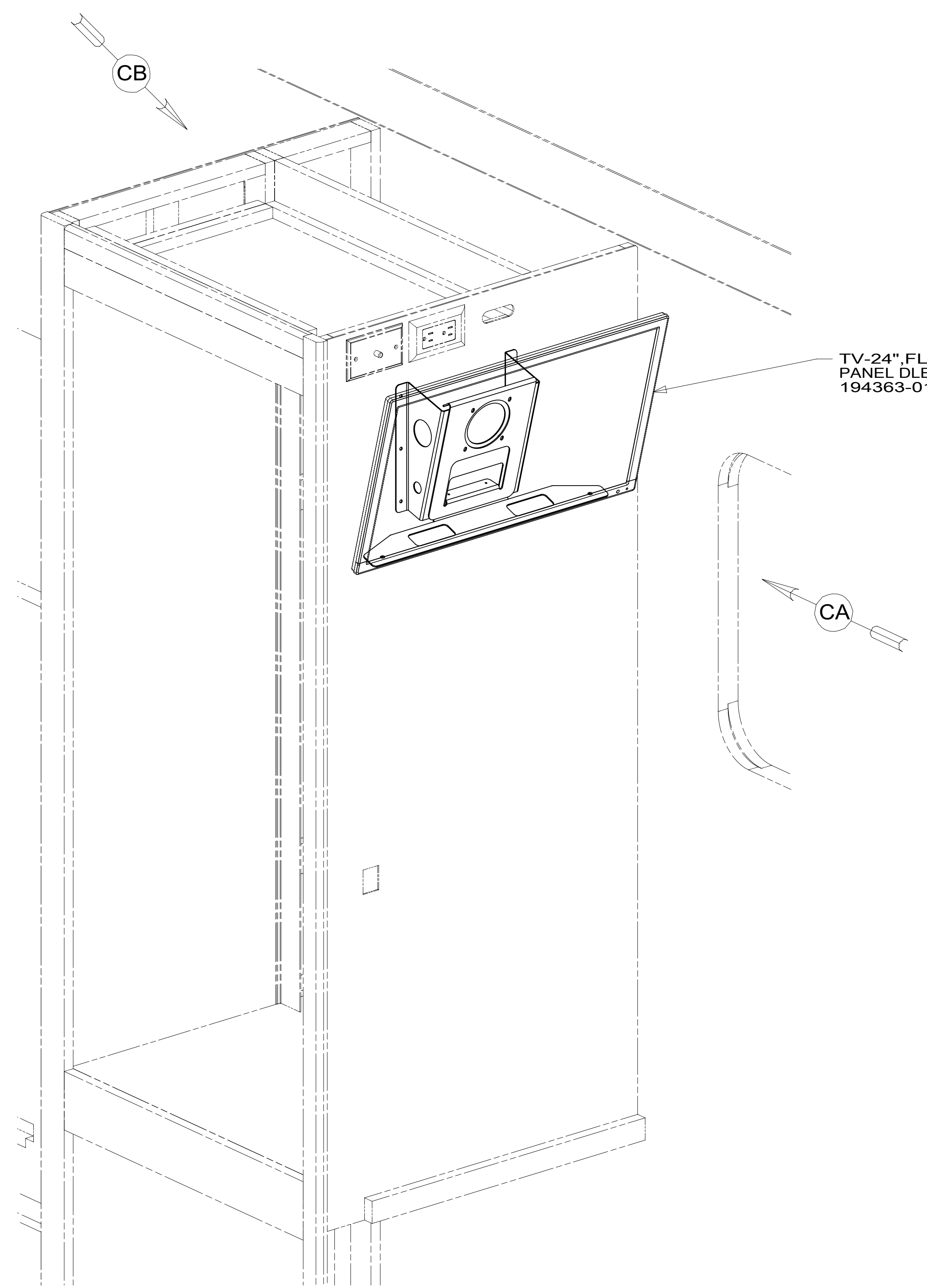
DETAIL BA

- 68R TV - FRONT
- 265 CODES/STANDARDS-CSA/CMVSS
- 1B1 CODES/STANDARDS USA

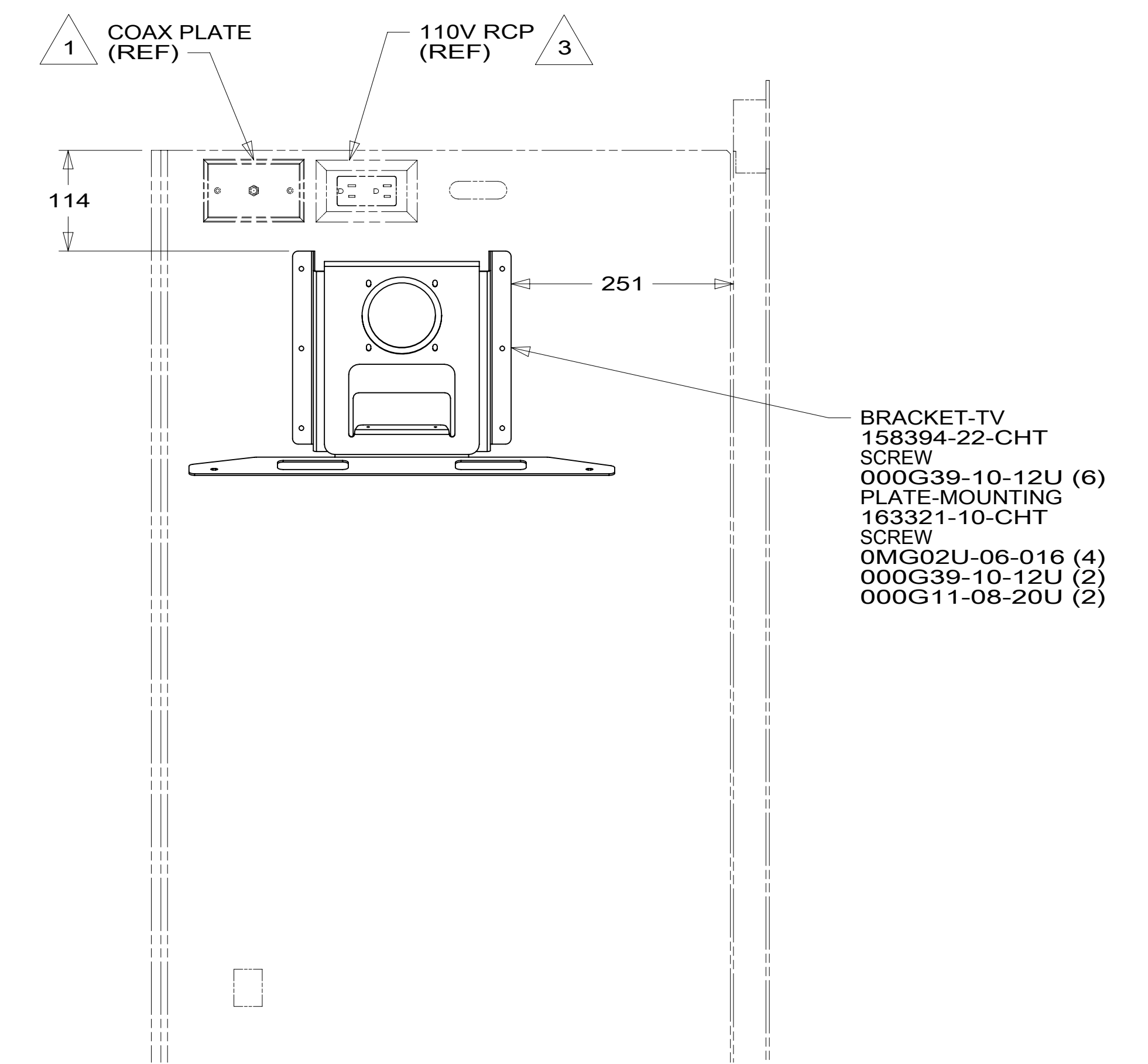
FOR ELECTRICAL TORQUE SPECIFICATIONS SEE DWG NO. 128783-01-000

FOR ELECTRICAL CALLOUTS SEE DWG NO. 121339-01-000

DESCRIPTION:		<b>WIRING INSTL-TV/DVD</b>	
SHEET:	ITEM/PART NO.:	REV	
2 OF 5	000200771 / 30076101000		

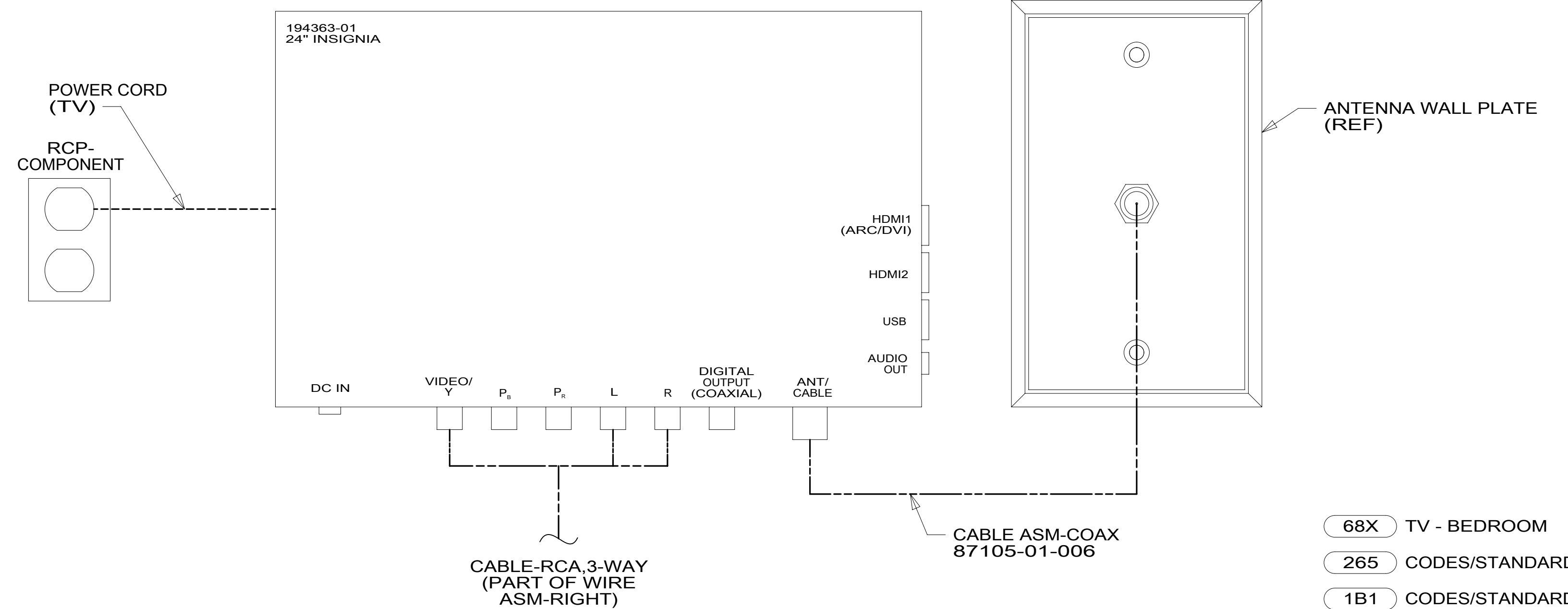


TV-24", FLAT  
PANEL DLED, HDTV  
194363-01-000 2



BRACKET-TV  
158394-22-CHT  
SCREW  
000G39-10-12U (6)  
PLATE-MOUNTING  
163321-10-CHT  
SCREW  
0MG02U-06-016 (4)  
000G39-10-12U (2)  
000G11-08-20U (2)

VIEW CA  
(TV NOT SHOWN)



CABLE-RCA, 3-WAY  
(PART OF WIRE  
ASM-RIGHT)

CABLE ASM-COAX  
87105-01-006

VIEW CB

- NOTES:
- 3 SEE WIRING INSTL-BODY, 110V FOR ADDITIONAL INFORMATION.
  - 2 USE SCREWS PROVIDED WITH TV TO ATTACH TV TO MOUNTING PLATE.
  - 1 SEE WIRING INSTL-BODY, 12V FOR ADDITIONAL INFORMATION.

FOR ELECTRICAL  
TORQUE  
SPECIFICATIONS  
SEE DWG NO.  
128783-01-000

FOR ELECTRICAL  
CALLOUTS  
SEE DWG NO.  
121339-01-000

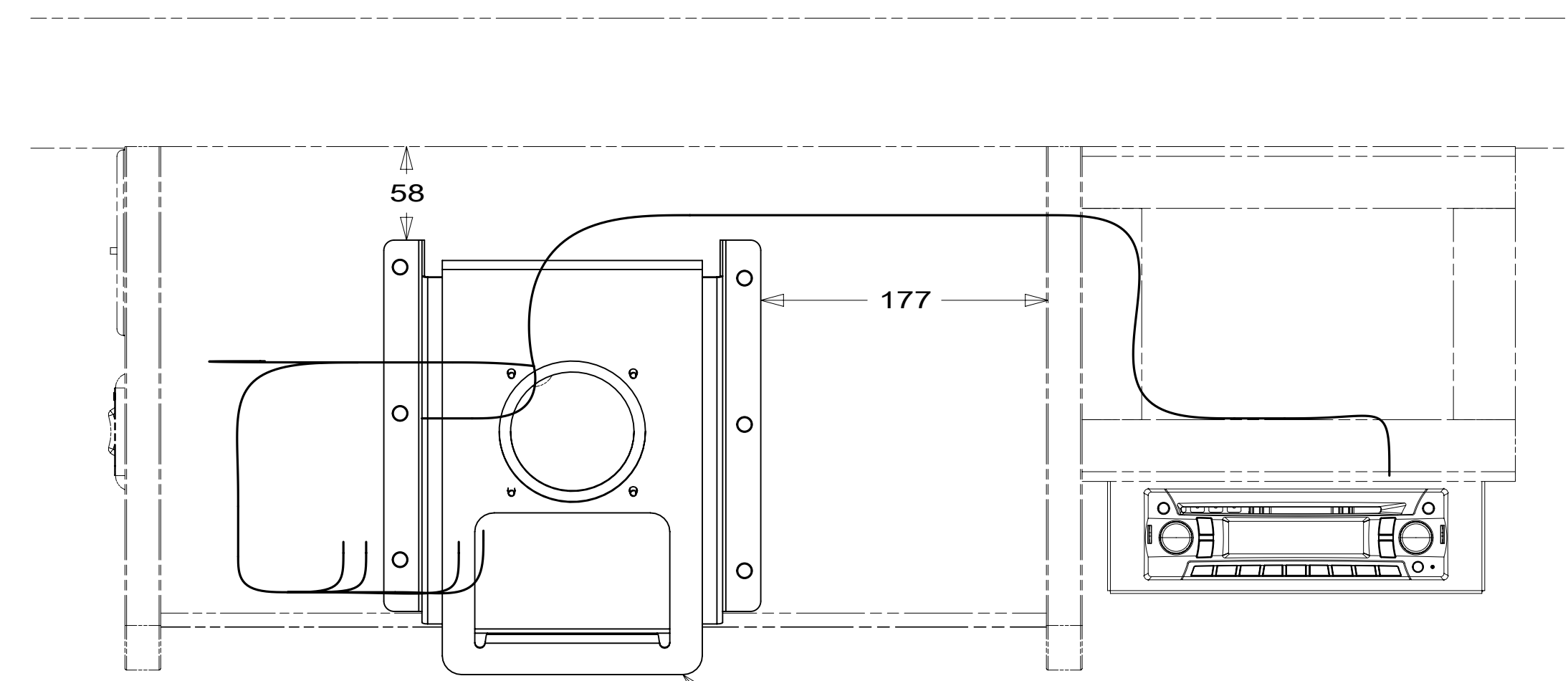
- 68X TV - BEDROOM
- 265 CODES/STANDARDS-CSA/CMVSS
- 1B1 CODES/STANDARDS USA

DESCRIPTION: <b>WIRING INSTL-TV/DVD</b>		
SHEET: <b>3 OF 5</b>	ITEM/PART NO: <b>000200771 / 30076101000</b>	REV

8 7 6 5 4 3 2 1

D  
C  
B  
A

D  
C  
B  
A



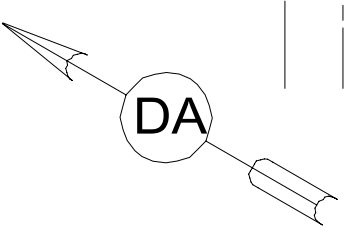
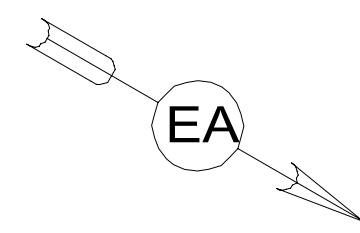
VIEW DA  
(TV NOT SHOWN)

- BRACKET-TV, 24"INSIGNIA 302683-01-CHT
- SCREW 000G39-10-16U (6)
- PLATE-MTNG, TV,24"INSIGNIA 302643-01-CHT
- SCREW 000G39-10-08U (2)

- RADIO-AM/FM/CD/DVD/RMT 302630-01-000
- BRACKET-DVD PLAYER 184814-02-CHT
- BRACKET-DVD PLAYER 187490-01-CHT
- SUPPORT-RADIO,REAR 181725-02-CHT
- SCREW 000G67-10-12U (6)
- SCREW 000G39-08-08U (4)

- TV-24" FLAT PANEL DLED,HDTV 194363-01-000
- SCREW 01MG02U-04-012 (4)
- WASHER 01ME02U-04-071 (4)
- CORD-POWER,12VDC 191991-01-000

- 1 ANTENNA POWER BOOST (REF)
- 1 TV SWITCH (REF)



FOR ELECTRICAL TORQUE SPECIFICATIONS SEE DWG NO. 128783-01-000

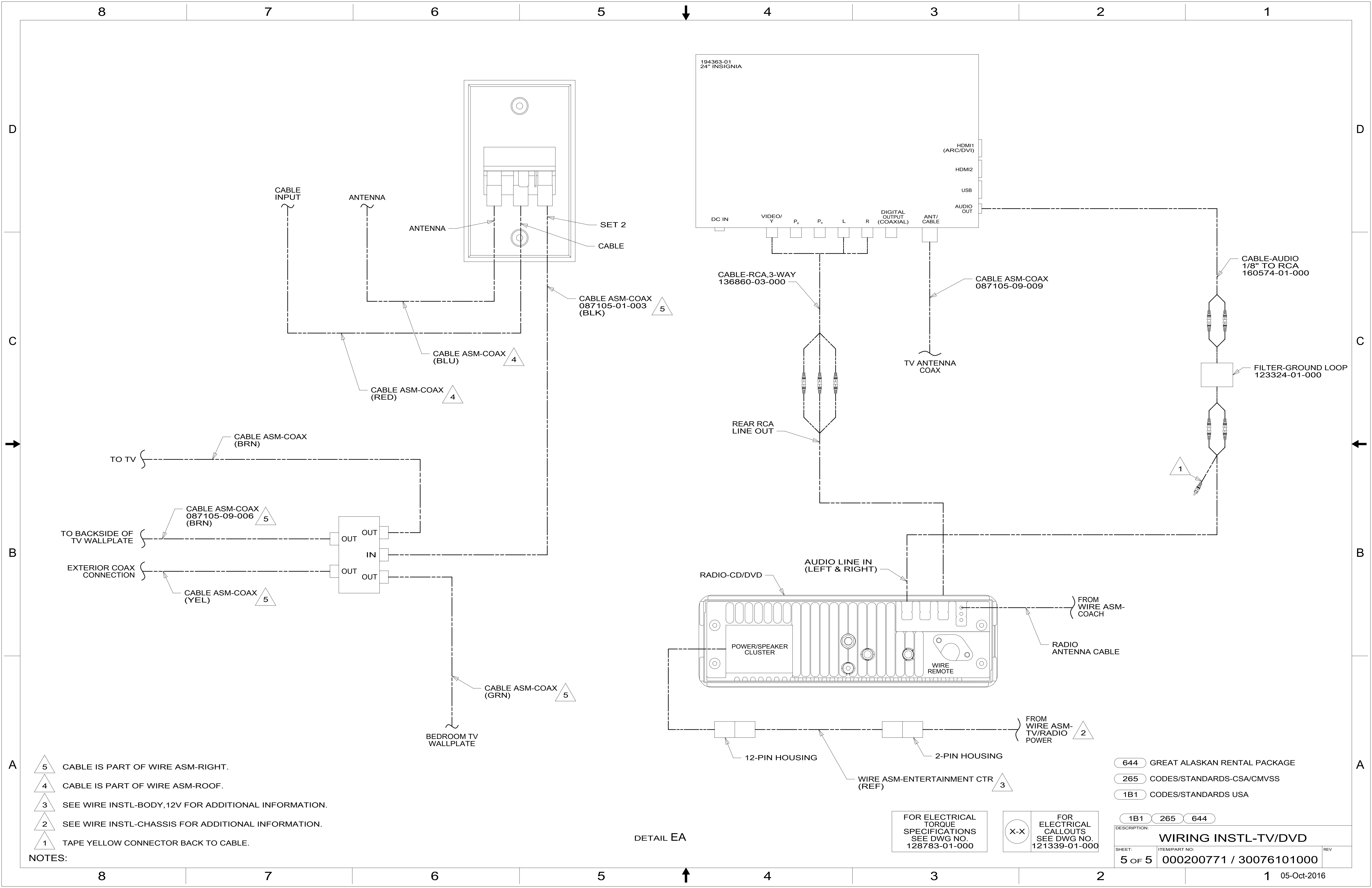
FOR ELECTRICAL CALLOUTS SEE DWG NO. 121339-01-000

- 644 GREAT ALASKAN RENTAL PACKAGE
- 265 CODES/STANDARDS-CSA/CMVSS
- 1B1 CODES/STANDARDS USA

DESCRIPTION:	1B1 265 644	
<b>WIRING INSTL-TV/DVD</b>		
SHEET:	ITEM/PART NO:	REV
4 OF 5	000200771 / 30076101000	

1 SEE WIRING INSTL-BODY, 12V FOR ADDITIONAL INFORMATION.

8 7 6 5 4 3 2 1 05-Oct-2016



- NOTES:
- 5 CABLE IS PART OF WIRE ASM-RIGHT.
  - 4 CABLE IS PART OF WIRE ASM-ROOF.
  - 3 SEE WIRE INSTL-BODY, 12V FOR ADDITIONAL INFORMATION.
  - 2 SEE WIRE INSTL-CHASSIS FOR ADDITIONAL INFORMATION.
  - 1 TAPE YELLOW CONNECTOR BACK TO CABLE.

DETAIL EA

FOR ELECTRICAL TORQUE SPECIFICATIONS SEE DWG NO. 128783-01-000

FOR ELECTRICAL CALLOUTS SEE DWG NO. 121339-01-000

- 644 GREAT ALASKAN RENTAL PACKAGE
- 265 CODES/STANDARDS-CSA/CMVSS
- 1B1 CODES/STANDARDS USA

DESCRIPTION:	1B1 265 644	
<b>WIRING INSTL-TV/DVD</b>		
SHEET:	ITEM/PART NO.:	REV
5 OF 5	000200771 / 30076101000	