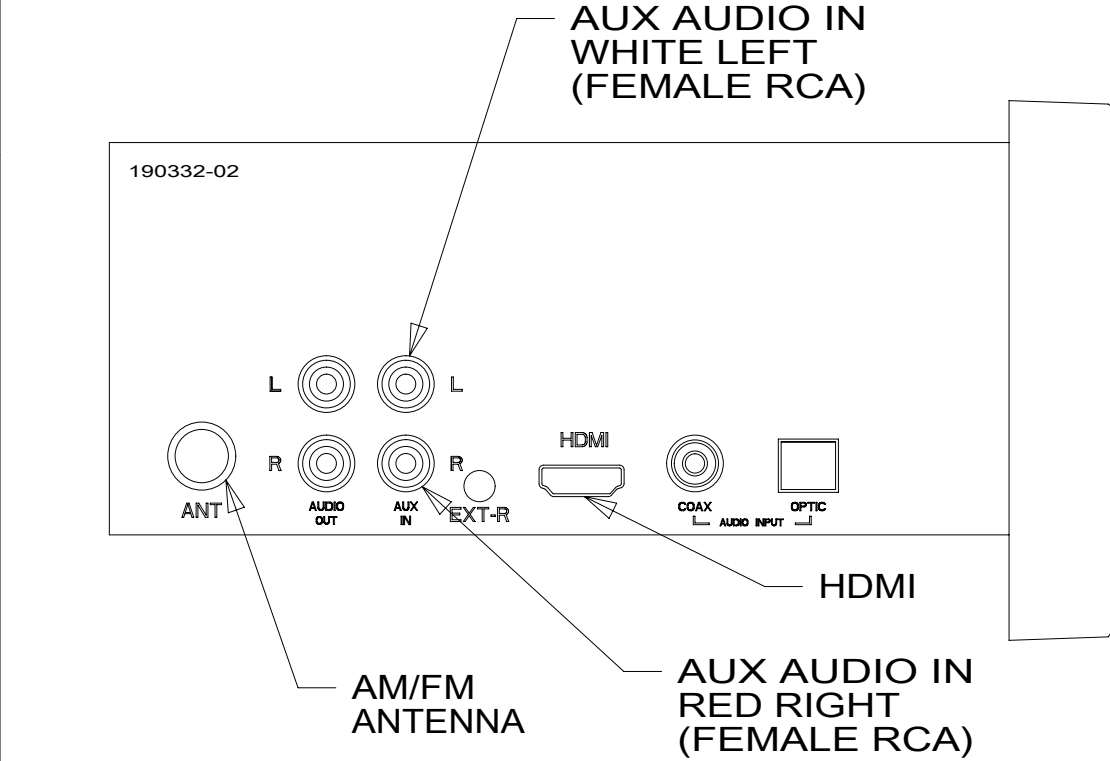
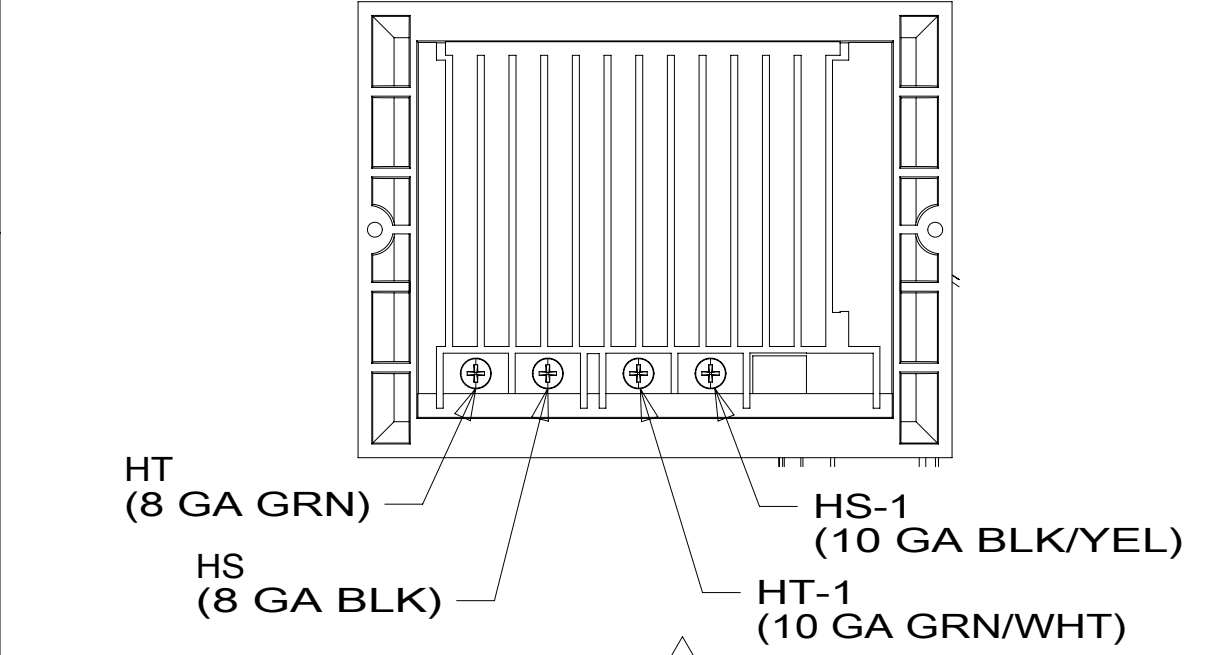


DETAIL AD



DETAIL AE



DETAIL AF

- 10 CLEAN AND APPLY ADHESIVE PROMOTOR 087211-01-000 TO BONDED SURFACES.
- 9 COVER ALL WIRES AND CABLES WITH CONVOLUTED TUBING. SECURE TO TV BRACKET SO THAT WIRES AND CABLES DO NOT BECOME PINCHED.
- 8 SEE WIRE ASM-SOLAR SYSTEM AND WIRE INSTL-CHASSIS FOR ADDITIONAL INFORMATION.
- 7 SEE STEP INSTALLATION FOR ADDITIONAL INFORMATION.
- 6 6 & 8 PIN HOUSINGS SUPPLIED WITH STEP.
- 5 WIRES ARE PART OF WIRE ASM-COACH.
- 4 MOUNT ON EXTERIOR SURFACE OF VAN SIDEWALL.
- 3 PLACE CROSS LOCATOR ON SENSORS OVER DIMPLES ON TANK.

2. ROUTE TANK SENSOR WIRES SO THEY DO NOT PASSOVER SENSORS. USE WIRE TIE MOUNT 155366-01-000 AND WIRE TIE 8343-01-000 AS NEEDED. TANK SURFACE MUST BE CLEANED USING ISOPROPYL ALCOHOL AND PRIMED WITH PRIMER 94.
1. ALL WIRES TO BE SECURED WITH CLAMP 10495 OR 10497 OR WIRE TIE 8343 OR 108046 EVERY 600MM, USE SCREW G67-XX-XXX OR G56-XX-XXX AS APPROPRIATE FOR ONSTALLATION.

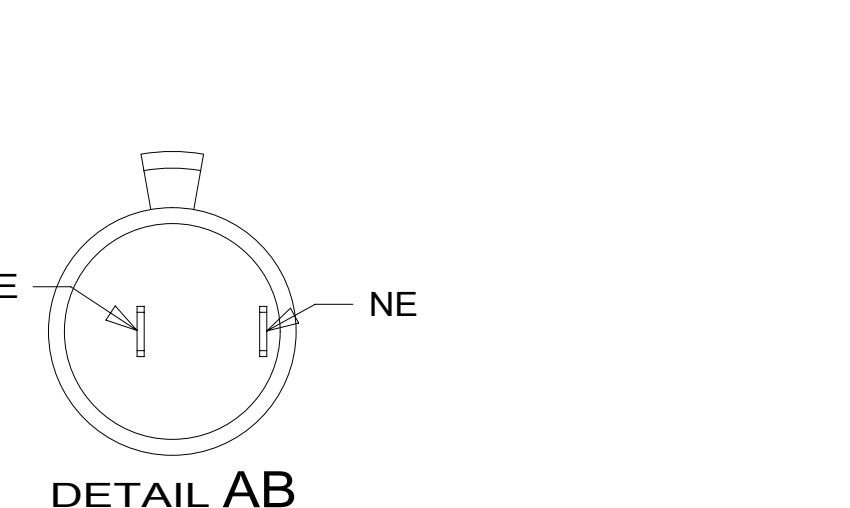
NOTES:

- TV-24" HDTV, 12 VDC  
000031269 / 316937-01-000  
CORD-POWER,12VDC  
191991-01-000  
CABLE-AUDIO  
1/8" TO RCA  
160574-01-000  
ADAPTOR-COAX 90°  
176986-01-000  
SCREW  
0MG02B-04-012 (4)  
WASHER  
0ME02U-04-071 (4)  
NUT  
D28-10-00U (4)  
WASHER  
E13-04-00U (6)  
TAPE  
076322-21-000  
(300 MM)  
BRKT ASM-MNTNG,  
TV,24"INSIGN  
302577-01-CHT  
CONVOLUTE  
041953-01-000  
(1200 MM)  
DETAIL BA

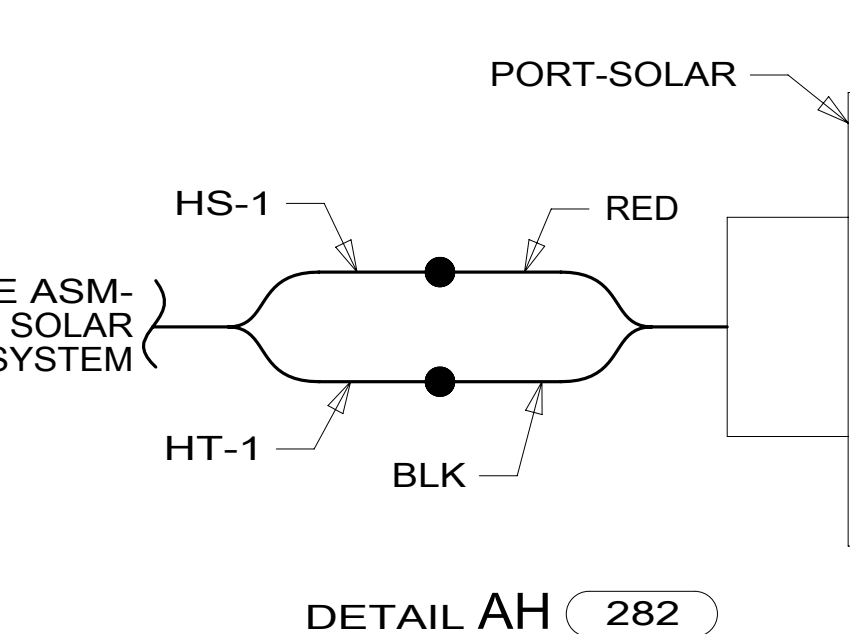
- KD TO DOOR SWITCH  
DETAIL AA
- SWITCH  
DETAIL CE
- TO LEFT SIDE
- USB-CHARGER DUAL,DC  
188312-01-000  
DETAIL AB

- 3 WIRE ASM-WATER TANK  
151317-01-000
- SWITCH  
DETAIL CB
- TO WATER PUMP

- 7 TO STEP CONTROL  
RELAY  
DETAIL AD  
063912-02-000  
SCREW  
G11-08-12U
- TO WIRE  
ASM-CHASSIS
- RELAY-AWNING  
063912-02-000  
SCREW  
G11-08-12U



DETAIL AB



DETAIL AH

- RADIO  
190332-02-CHT  
SCREW  
76790-03-000 (4)  
DETAIL AE

- SWITCH  
DETAIL CG
- PLATE-WALL  
167733-01-CHT
- SPEAKER  
160868-01-CHT  
GRILL  
160868-02-CHT  
SCREW  
G11-08-08U (4)

- WALLPLATE  
179004-02-CHT  
DETAIL BB
- SWITCH  
DETAIL CA

- DA
- DB

- TO WIRE  
ASM-CHASSIS
- CONVERTER-45 AMP  
184353-01-000  
SCREW  
G67-10-12U (3)  
DETAIL CL

- TO STEP CONTROL  
RELAY  
DETAIL AD  
063912-02-000  
SCREW  
G11-08-12U
- DISTRIBUTION PANEL  
187831-01-CHT  
SCREW  
G11-08-12U (4)  
DETAIL CM

- TO WIRE  
ASM-CHASSIS
- CONVERTER-45 AMP  
184353-01-000  
SCREW  
G67-10-12U (3)  
DETAIL CL

- TO WIRE  
ASM-CHASSIS
- CONVERTER-45 AMP  
184353-01-000  
SCREW  
G67-10-12U (3)  
DETAIL CL

- TO WIRE  
ASM-CHASSIS
- CONVERTER-45 AMP  
184353-01-000  
SCREW  
G67-10-12U (3)  
DETAIL CL

- TO WIRE  
ASM-CHASSIS
- CONVERTER-45 AMP  
184353-01-000  
SCREW  
G67-10-12U (3)  
DETAIL CL

- TO WIRE  
ASM-CHASSIS
- CONVERTER-45 AMP  
184353-01-000  
SCREW  
G67-10-12U (3)  
DETAIL CL

- TO WIRE  
ASM-CHASSIS
- CONVERTER-45 AMP  
184353-01-000  
SCREW  
G67-10-12U (3)  
DETAIL CL

- TO WIRE  
ASM-CHASSIS
- CONVERTER-45 AMP  
184353-01-000  
SCREW  
G67-10-12U (3)  
DETAIL CL

- TO WIRE  
ASM-CHASSIS
- CONVERTER-45 AMP  
184353-01-000  
SCREW  
G67-10-12U (3)  
DETAIL CL

DETAIL AA

- LIGHT-READING,LED W/SWITCH  
190707-01-CHT
- CONTROL-CHARGE,SOLAR  
191278-01-000  
SCREW  
G11-08-12U (2)  
DETAIL AF

- LAMP ASM-PORCH  
184120-01-CHT  
SCREW  
G39-06-10U (2)  
CONNECTOR  
58028-01-000 (2)

- SWITCH  
DETAIL CH
- WIRE ASM-COACH  
TO WIRE ASM-CEILING  
DETAIL DC

- SPEAKER  
171547-01-CHT (2),  
SCREW  
G39-10-12U (8)

- LAMP ASM-PORCH  
184120-01-CHT  
SCREW  
G39-06-10U (2)  
CONNECTOR  
58028-01-000 (2)

- PANEL-MONITOR  
175724-06-000  
SCREW  
G11-08-08U (4)

- SENSOR-ROOM TEMP  
192038-35-CHT  
PLATE  
192254-01-CHT  
HEATER CONTROL PANEL  
192038-32-CHT  
FUSE  
062901-09-000

- OUTLET-COAX/12V  
EXTERIOR  
168516-01-CHT  
SCREW  
G39-08-16T (2)  
DETAIL AC

- PORT-SOLAR, SINGLE  
191558-01-000  
SCREW  
G39-10-16T (4)  
DETAIL AH

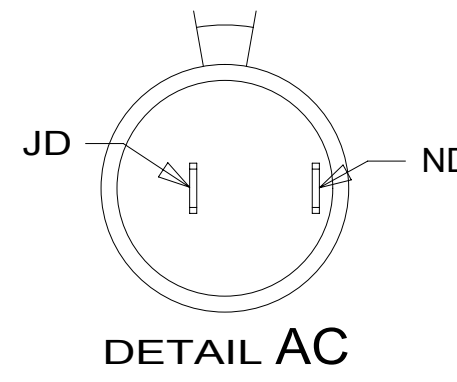
- SWITCH  
DETAIL CD
- SWITCH  
DETAIL CF

- RECEPTACLE-12V  
132958-01-000  
DETAIL AC

- CROSSOVER BOX  
150140-01-000  
CROSSOVER COIL  
150140-02-000  
CLAMP  
10497-02-000  
SCREW  
G11-08-08U (4)  
SCREW  
G67-10-12B

- FOR ELECTRICAL  
TORQUE  
SPECIFICATIONS  
SEE DWG NO.  
128783-01-000

- FOR ELECTRICAL  
CALLOUTS  
SEE DWG NO.  
121339-01-000



DETAIL AC

- LAMP ASM-PORCH  
184120-01-CHT  
SCREW  
G39-06-10U (2)  
CONNECTOR  
58028-01-000 (2)

- PANEL-MONITOR  
175724-06-000  
SCREW  
G11-08-08U (4)

- SENSOR-ROOM TEMP  
192038-35-CHT  
PLATE  
192254-01-CHT  
HEATER CONTROL PANEL  
192038-32-CHT  
FUSE  
062901-09-000

- OUTLET-COAX/12V  
EXTERIOR  
168516-01-CHT  
SCREW  
G39-08-16T (2)  
DETAIL AC

- PORT-SOLAR, SINGLE  
191558-01-000  
SCREW  
G39-10-16T (4)  
DETAIL AH

- SWITCH  
DETAIL CD
- SWITCH  
DETAIL CF

- RECEPTACLE-12V  
132958-01-000  
DETAIL AC

- CROSSOVER BOX  
150140-01-000  
CROSSOVER COIL  
150140-02-000  
CLAMP  
10497-02-000  
SCREW  
G11-08-08U (4)  
SCREW  
G67-10-12B

- FOR ELECTRICAL  
TORQUE  
SPECIFICATIONS  
SEE DWG NO.  
128783-01-000

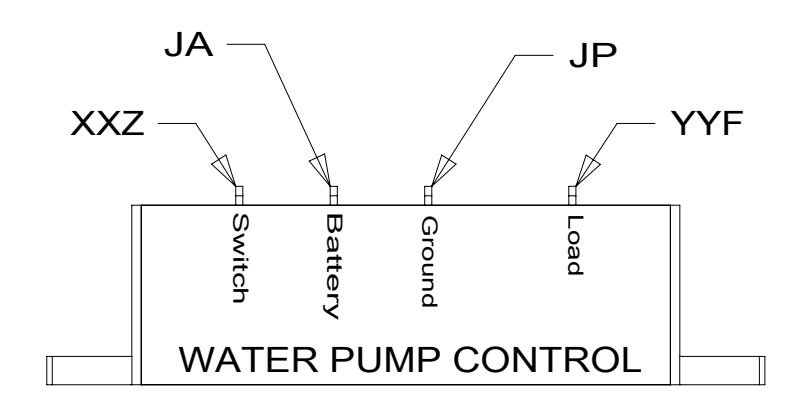
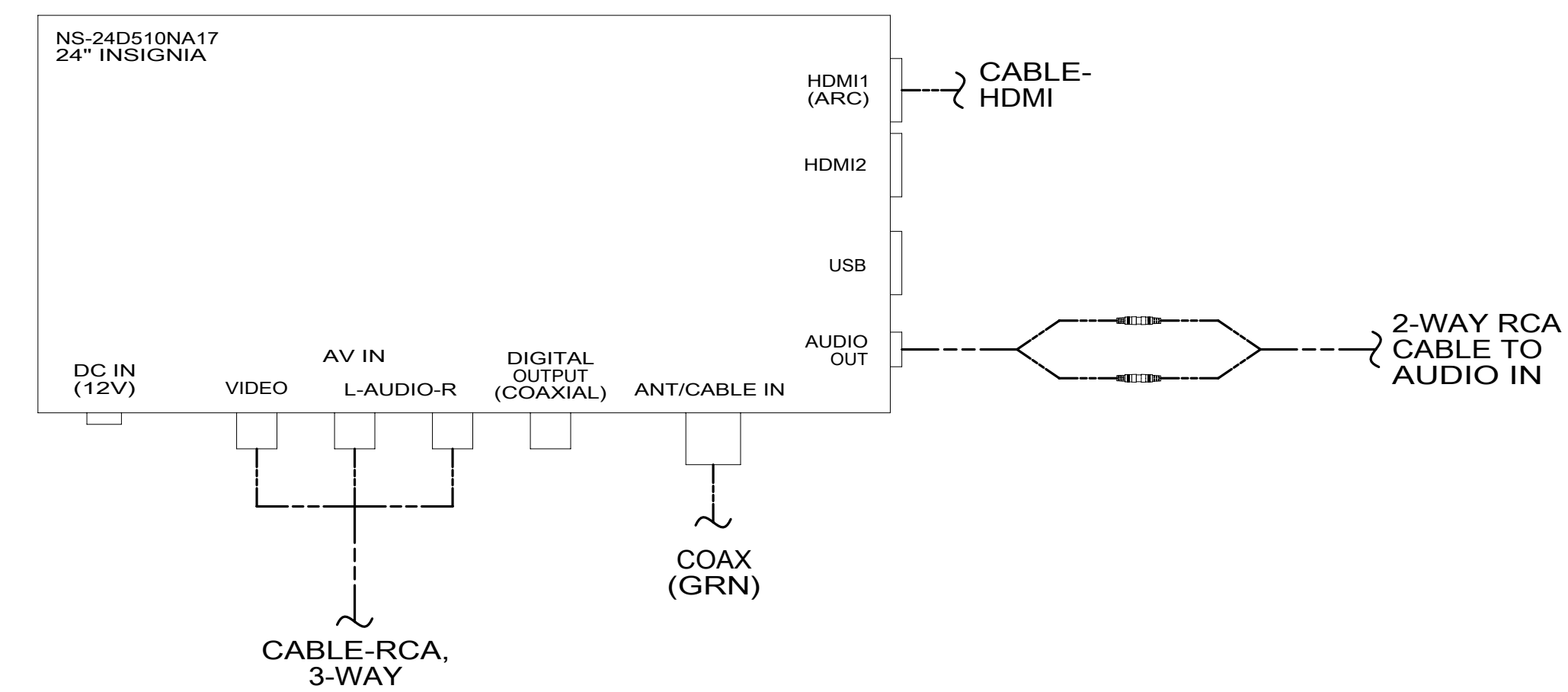
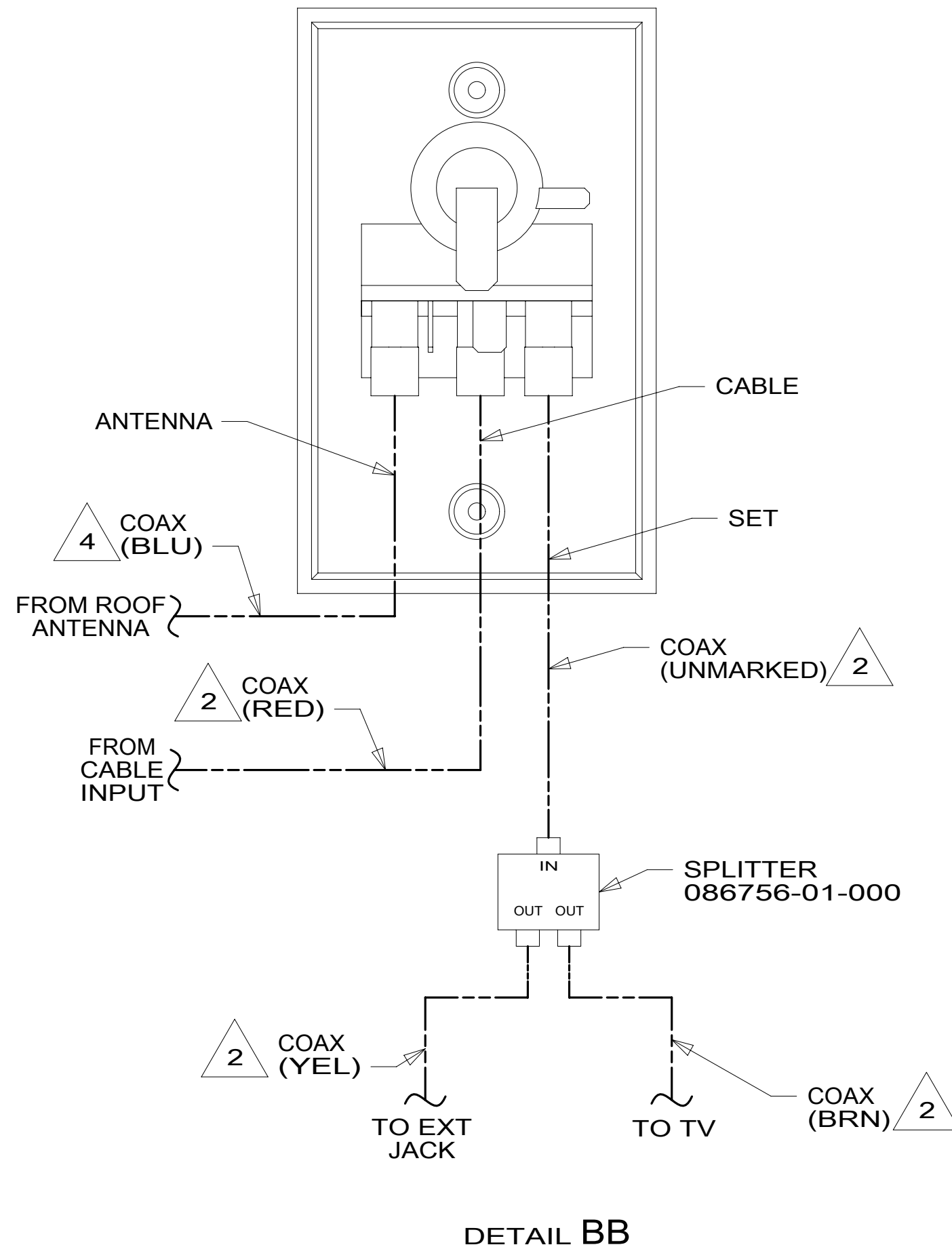
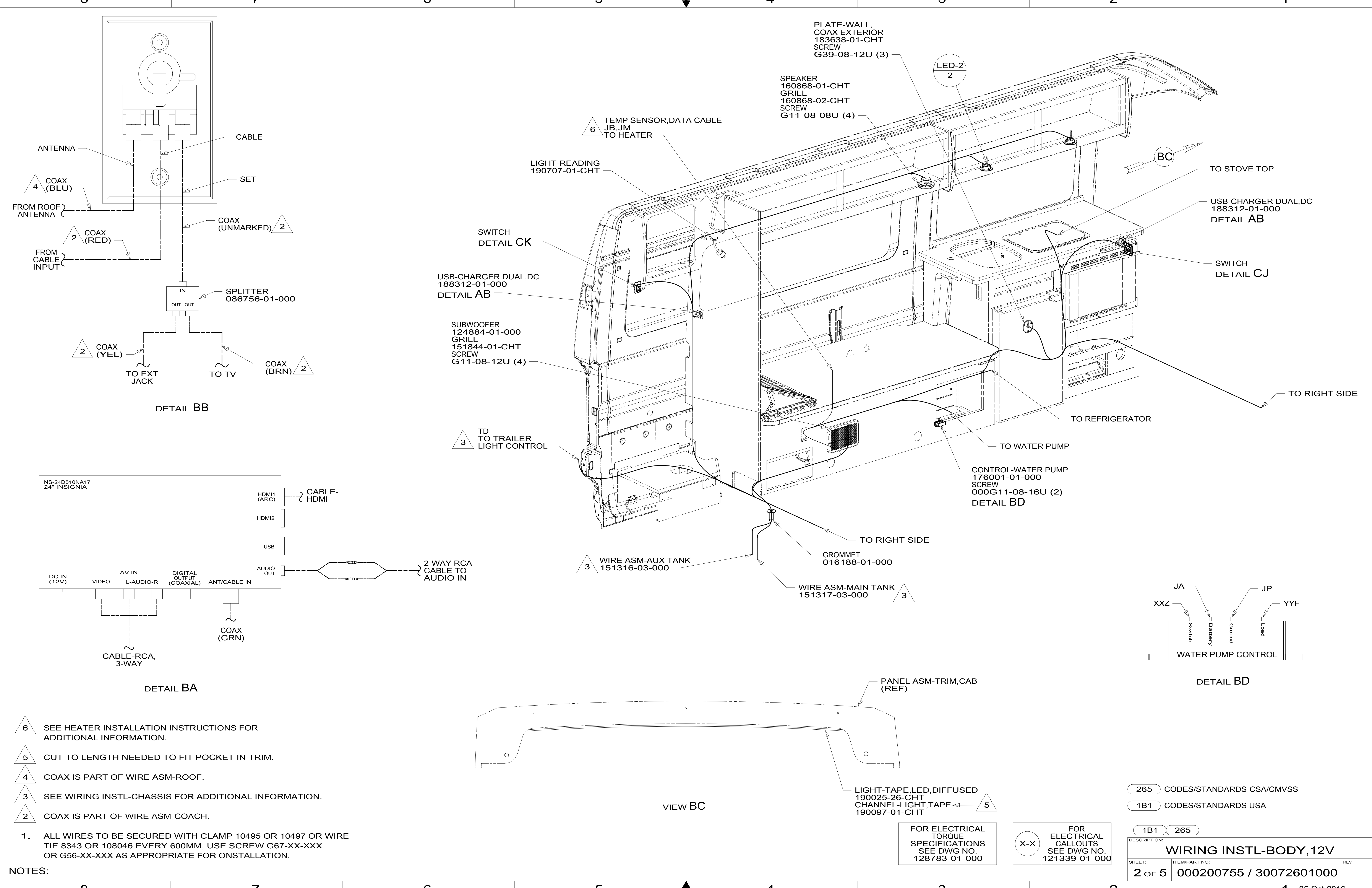
- FOR ELECTRICAL  
CALLOUTS  
SEE DWG NO.  
121339-01-000

- 282 SOLAR PANEL - 100 WATT
- 255 RADIO/AM/FM/CD/DVD PLAYER
- 68Y TV - MAIN
- 265 CODES/STANDARDS-CSA/CMVSS
- 1B1 CODES/STANDARDS USA

**WINNEBAGO**

COPYRIGHT 2016 WINNEBAGO INDUSTRIES, INC.

DSNR:	ALL DIMENSIONS ARE IN MILLIMETERS
DFFR:	
UNSPECIFIED TOLERANCES:	MATERIAL:
WHOLE DIM (X) ± 3	
ONE-PLACE (X.X) ± 1.5	
TWO-PLACE (X.XX) ± 0.50	
ANGLE ± 1°	
REFER TO ES0018 FOR FASTENER TIGHTENING GUIDELINES	WEIGHT: (LBS) FIRST USED: 16 259K
DESCRIPTION: <b>WIRING INSTL-BODY, 12V</b>	
SHEET: 1 OF 5	ITEMPART NO: 000200755 / 30072601000

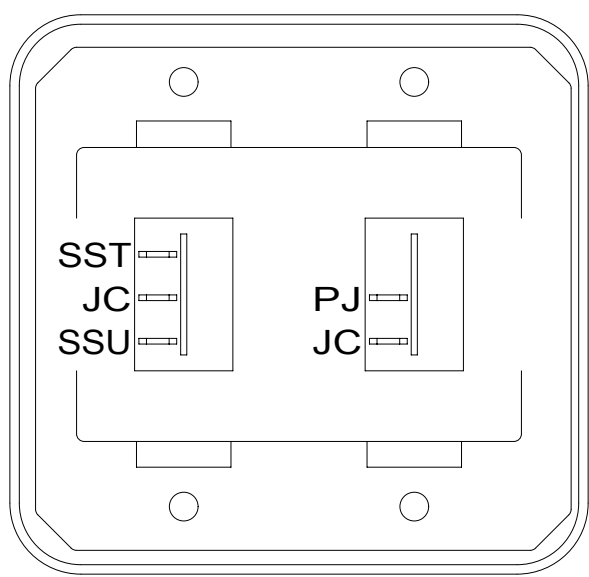


- NOTES:
- 1. ALL WIRES TO BE SECURED WITH CLAMP 10495 OR 10497 OR WIRE TIE 8343 OR 108046 EVERY 600MM, USE SCREW G67-XX-XXX OR G56-XX-XXX AS APPROPRIATE FOR ONSTALLATION.
  - 2. COAX IS PART OF WIRE ASM-COACH.
  - 3. SEE WIRING INSTL-CHASSIS FOR ADDITIONAL INFORMATION.
  - 4. COAX IS PART OF WIRE ASM-ROOF.
  - 5. CUT TO LENGTH NEEDED TO FIT POCKET IN TRIM.
  - 6. SEE HEATER INSTALLATION INSTRUCTIONS FOR ADDITIONAL INFORMATION.

FOR ELECTRICAL TORQUE SPECIFICATIONS SEE DWG NO. 128783-01-000

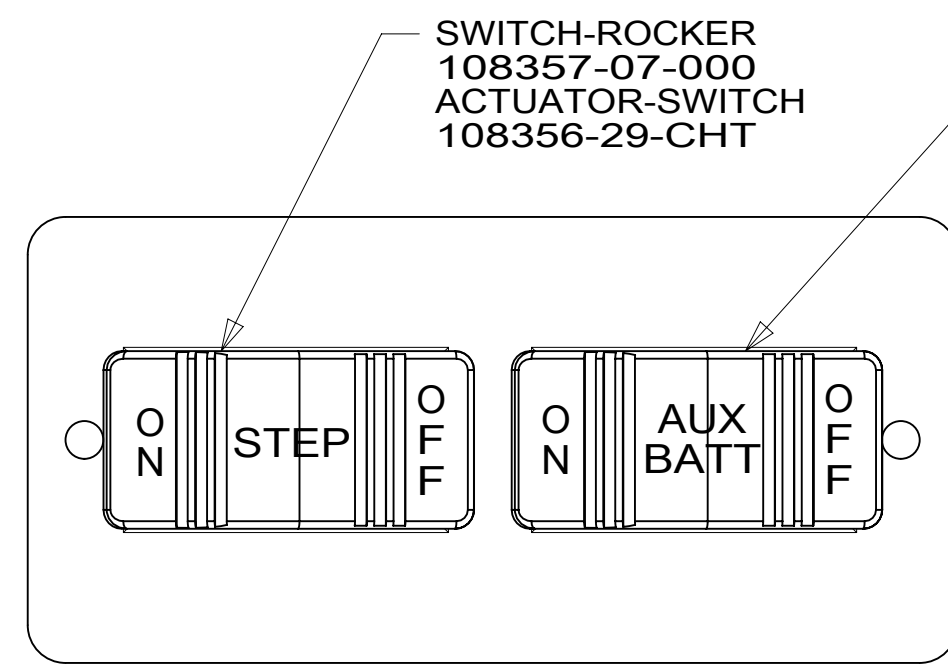
FOR ELECTRICAL CALLOUTS SEE DWG NO. 121339-01-000

265	CODES/STANDARDS-CSA/CMVSS
1B1	CODES/STANDARDS USA
1B1	265
DESCRIPTION: <b>WIRING INSTL-BODY, 12V</b>	
SHEET: 2 OF 5	ITEM/PART NO: 000200755 / 30072601000
REV 1 05-Oct-2016	



SWITCH-ROCKER  
135740-01-CHT  
135740-02-CHT  
SWITCH-BASE  
135741-02-CHT  
SWITCH-BEZEL  
135742-02-CHT  
SCREW  
G11-08-08U (4)

DETAIL CA

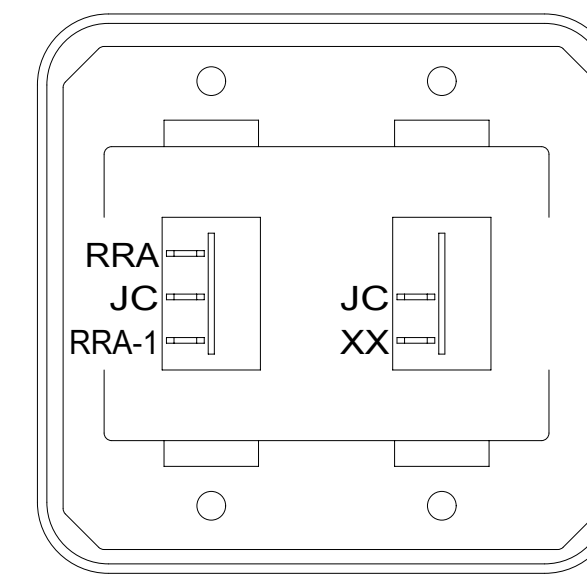


SWITCH-ROCKER  
108357-07-000  
ACTUATOR-SWITCH  
108356-29-CHT

SWITCH-ROCKER  
108357-18-000  
ACTUATOR-SWITCH  
108356-19-CHT  
WIRE ASM-THERM  
186796-01-000

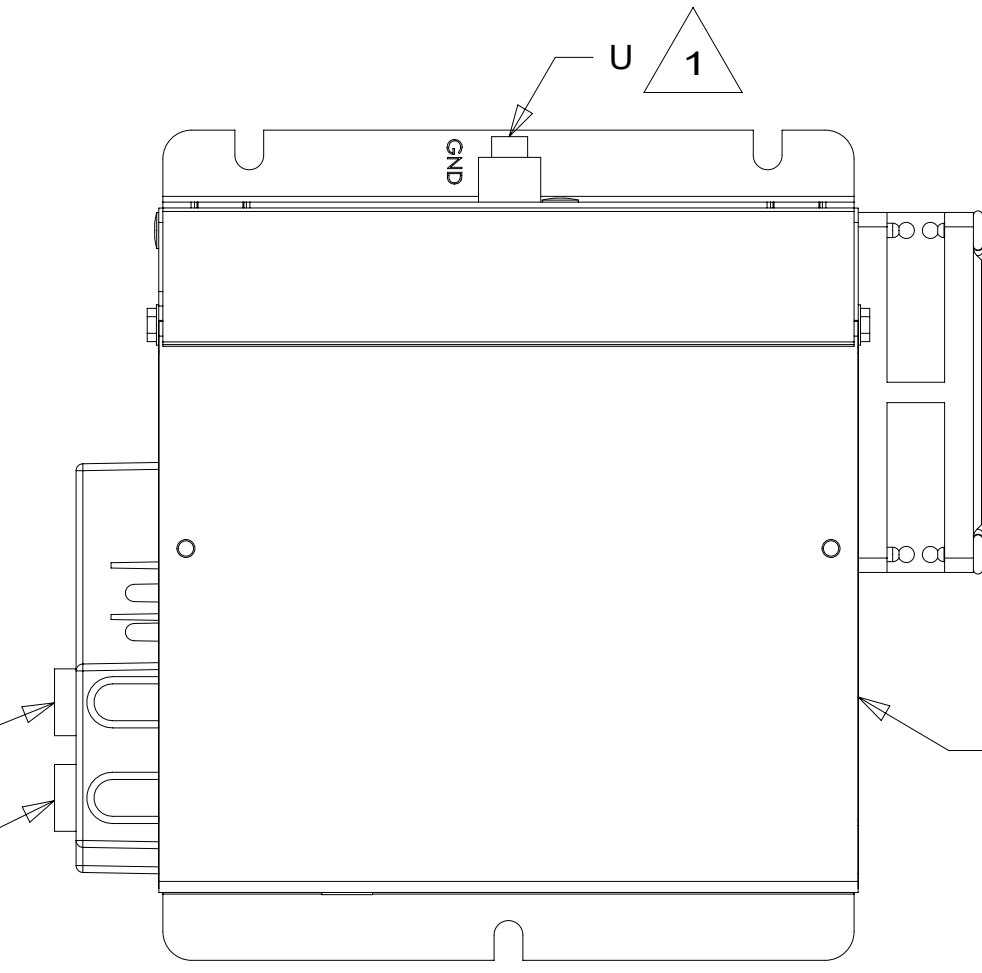
PLATE-SWITCH  
164352-06-CHT  
SCREW  
G11-06-10U (2)

DETAIL CE



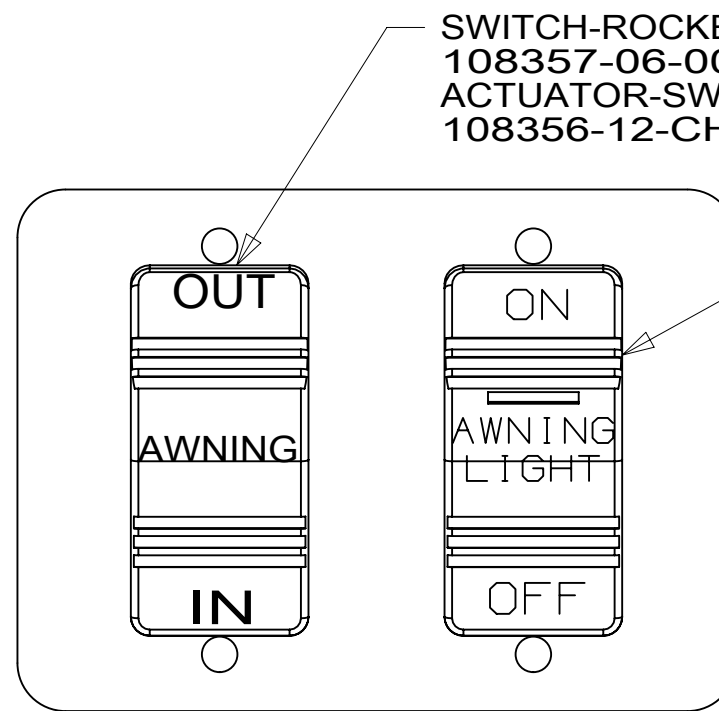
SWITCH-ROCKER  
135740-01-CHT  
135740-04-CHT  
SWITCH-BASE  
135741-02-CHT  
SWITCH-BEZEL  
135742-02-CHT  
SCREW  
G11-08-08U (4)  
WIRE ASM-RESISTOR  
140195-01-000

DETAIL CJ



CONVERTER  
(REFERENCE)

DETAIL CL



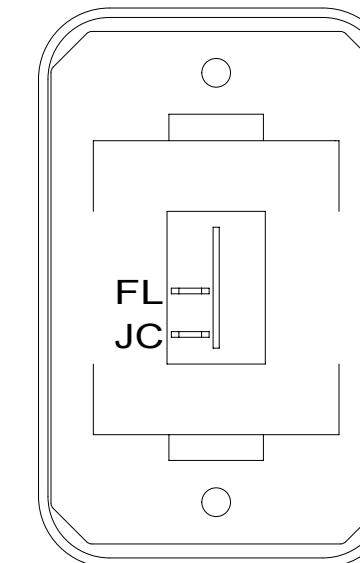
SWITCH-ROCKER  
108357-06-000  
ACTUATOR-SWITCH  
108356-12-CHT

SWITCH-ROCKER  
108357-14-000  
ACTUATOR-SWITCH  
108356-28-CHT  
SWITCH-BLANK  
096241-03-000

PLATE-SWITCH  
158431-17-CHT  
SCREW  
G11-06-10U (4)

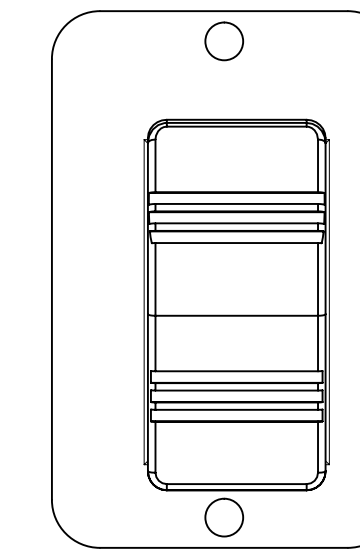
35L

DETAIL CB



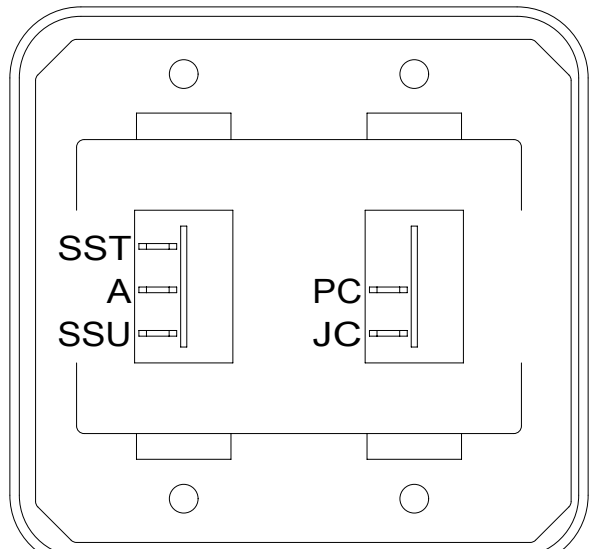
SWITCH-ROCKER  
135740-01-CHT  
SWITCH-BASE  
135741-01-CHT  
SWITCH-BEZEL  
135742-01-CHT  
SCREW  
G11-08-08U (2)

DETAIL CF



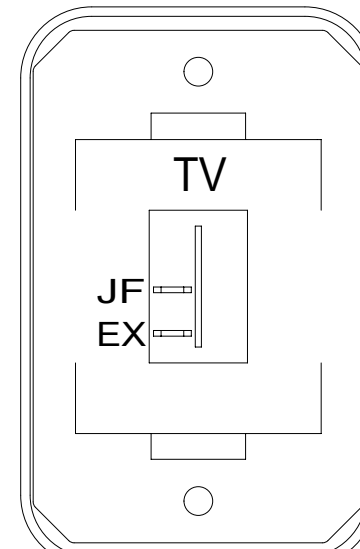
SWITCH-ROCKER  
108357-01-000  
ACTUATOR-SWITCH  
108356-01-CHT  
PLATE-SWITCH  
144363-02-CHT  
SCREW  
G11-06-10U (4)

DETAIL CK



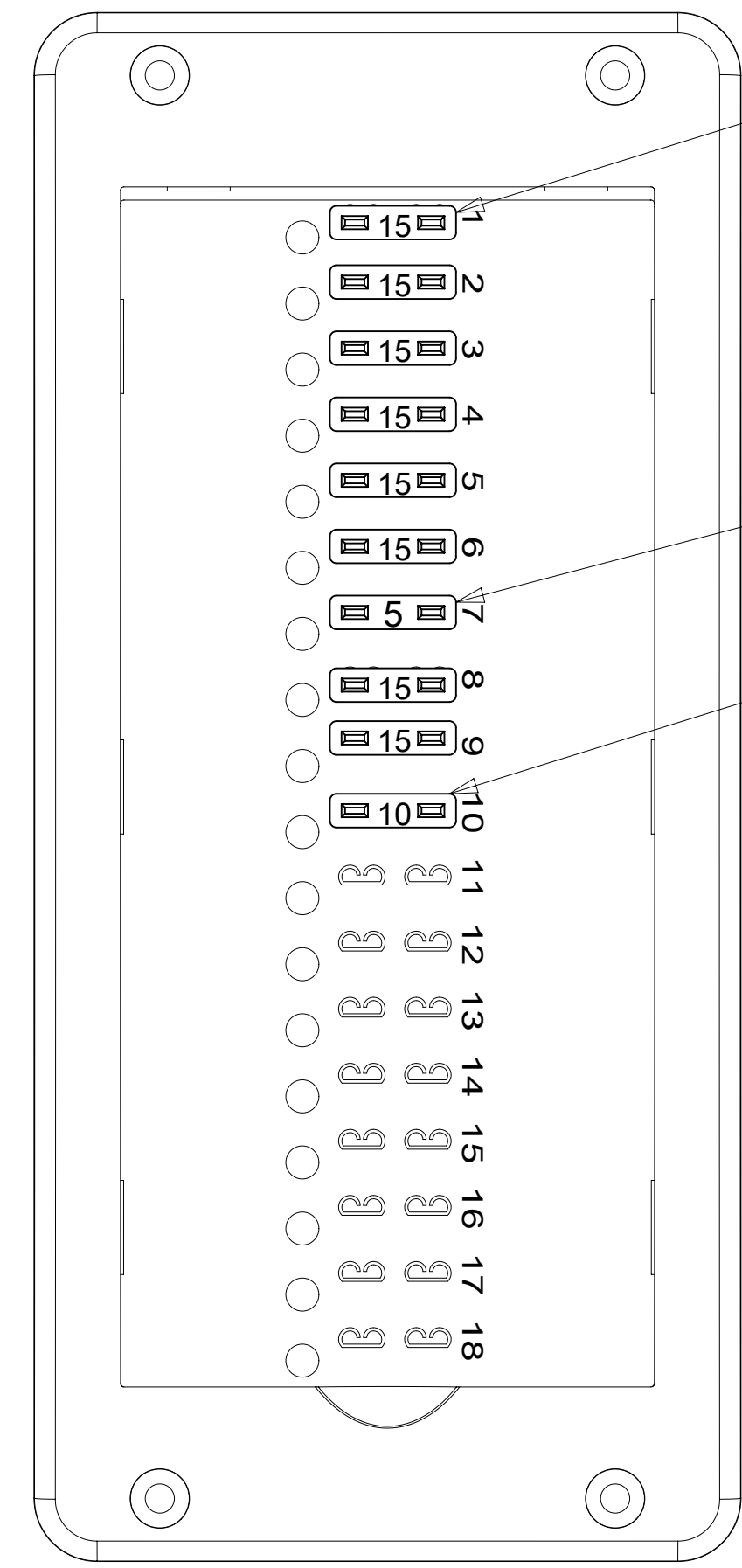
SWITCH-ROCKER  
135740-01-CHT  
135740-02-CHT  
SWITCH-BASE  
135741-02-CHT  
SWITCH-BEZEL  
135742-45-CHT  
SCREW  
G11-08-08U (4)

DETAIL CC



SWITCH-ROCKER  
135740-01-CHT  
SWITCH-BASE  
135741-01-CHT  
SWITCH-BEZEL  
135742-45-CHT  
SCREW  
G11-08-08U (2)

DETAIL CG 68Y

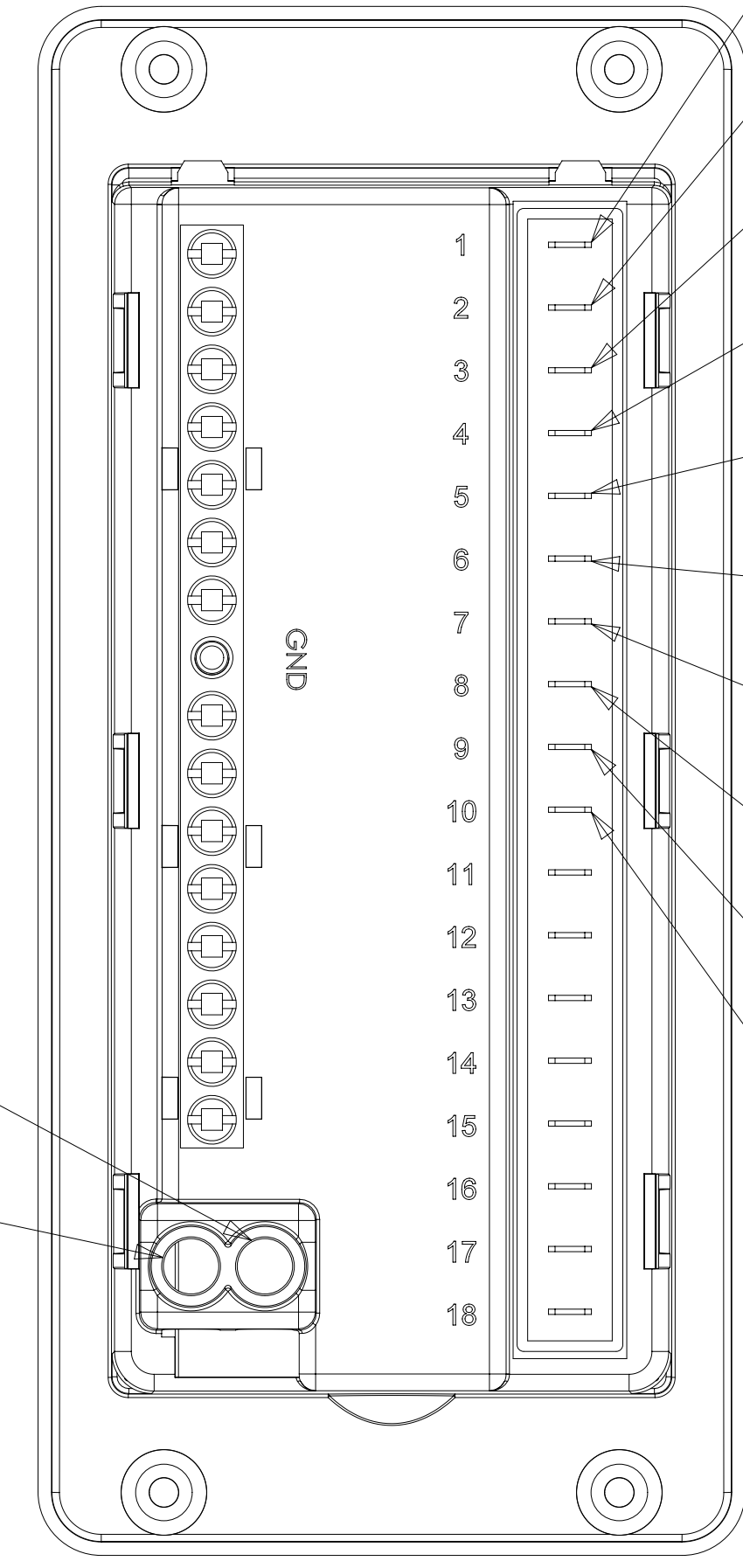


FUSE-15 AMP  
062901-05-000 (8)

FUSE-5 AMP  
062901-02-000

FUSE-10 AMP  
062901-04-000

DETAIL CM  
(COVER REMOVED)



JC  
14 Y  
(LIGHTS)

JD  
14 Y  
(12V RCP)

JE  
14 Y  
(USB CHARGER)

JF  
14 Y  
(TV/RADIO)

JG  
14 Y  
(VENT)

NM  
12 Y  
(AWNING)

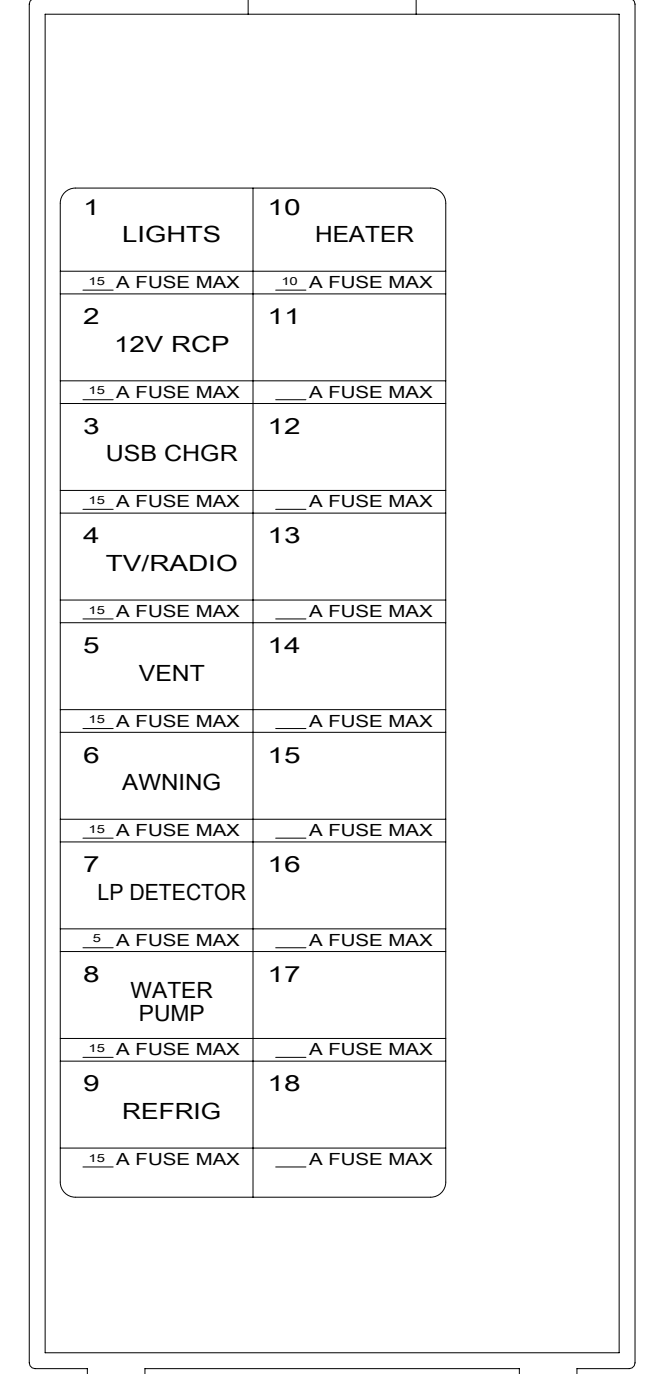
WB  
16 Y  
(LP DETECTOR)

JA  
12 Y  
(WATER PUMP)

ET  
10 Y  
(REFRIG)

JB  
10 Y  
(HEATER)

DETAIL CM  
(BACK SIDE)



1	LIGHTS	10	HEATER
15	A FUSE MAX	10	A FUSE MAX
2	12V RCP	11	
15	A FUSE MAX	A	FUSE MAX
3	USB CHGR	12	
15	A FUSE MAX	A	FUSE MAX
4	TV/RADIO	13	
15	A FUSE MAX	A	FUSE MAX
5	VENT	14	
15	A FUSE MAX	A	FUSE MAX
6	AWNING	15	
15	A FUSE MAX	A	FUSE MAX
7	LP DETECTOR	16	
15	A FUSE MAX	A	FUSE MAX
8	WATER PUMP	17	
15	A FUSE MAX	A	FUSE MAX
9	REFRIG	18	
15	A FUSE MAX	A	FUSE MAX

DETAIL CM  
(BACK SIDE  
OF COVER)

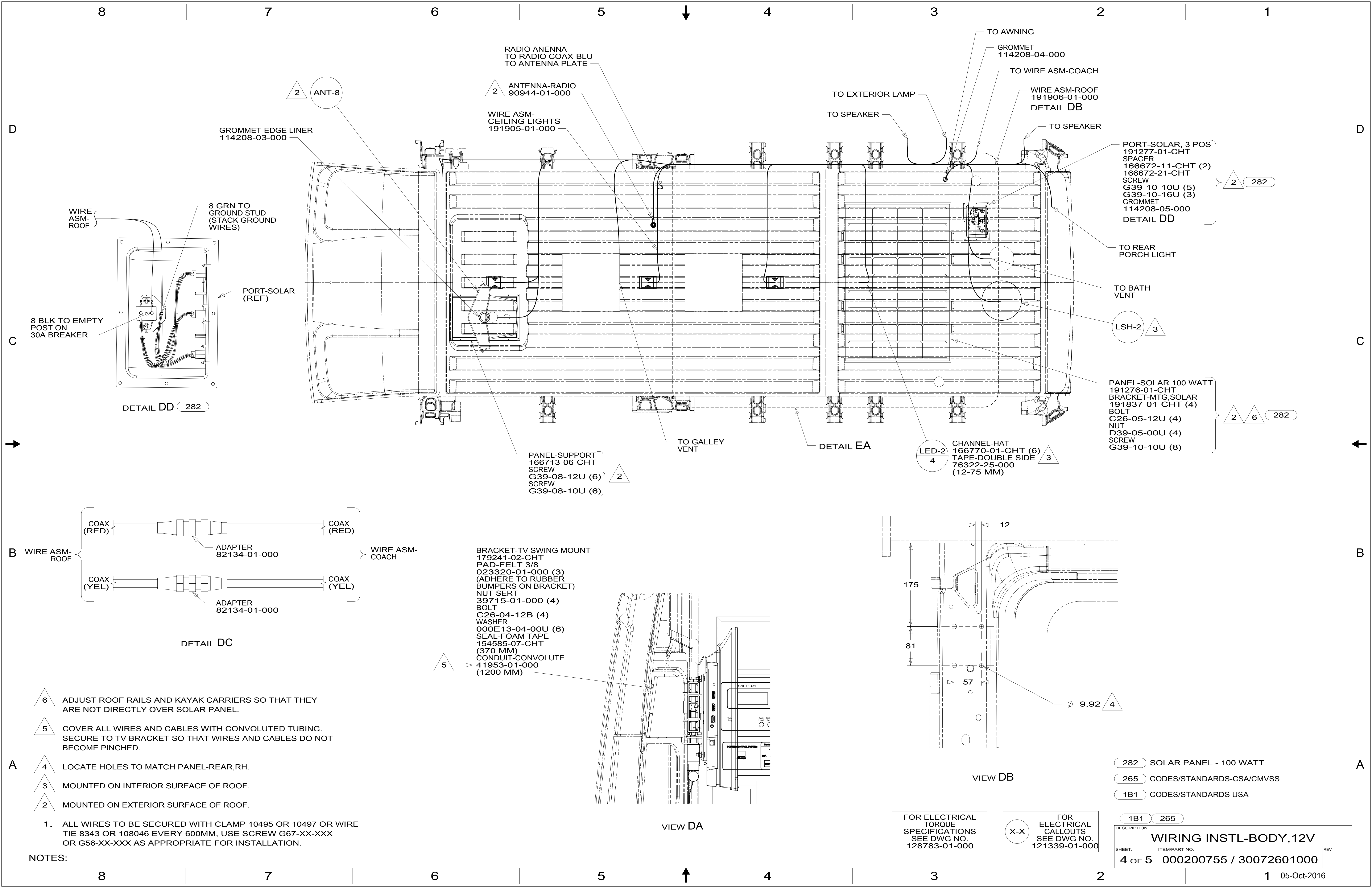
NOTES:  
 3 WITHOUT 35L  
 2 CIRCUIT FROM WIRE ASM-COACH.  
 1 CIRCUIT FROM WIRE ASM-CHASSIS

FOR ELECTRICAL  
TORQUE  
SPECIFICATIONS  
SEE DWG NO.  
128783-01-000

FOR ELECTRICAL  
CALLOUTS  
SEE DWG NO.  
121339-01-000

- 35L LADDER W/2 KAYAK RACKS
- 68Y TV - MAIN
- 265 CODES/STANDARDS-CSA/CMVSS
- 1B1 CODES/STANDARDS USA

DESCRIPTION:	1B1 265	
<b>WIRING INSTL-BODY, 12V</b>		
SHEET:	ITEM/PART NO:	REV
3 OF 5	000200755 / 30072601000	



2 ANT-8

2 ANTENNA-RADIO  
90944-01-000

WIRE ASM-  
CEILING LIGHTS  
191905-01-000

GROMMET-EDGE LINER  
114208-03-000

TO EXTERIOR LAMP  
TO SPEAKER

TO AWNING  
GROMMET  
114208-04-000

TO WIRE ASM-COACH

WIRE ASM-ROOF  
191906-01-000  
DETAIL DB

TO SPEAKER

PORT-SOLAR, 3 POS  
191277-01-CHT  
SPACER  
166672-11-CHT (2)  
166672-21-CHT  
SCREW  
G39-10-10U (5)  
G39-10-16U (3)  
GROMMET  
114208-05-000  
DETAIL DD

2 282

TO REAR  
PORCH LIGHT

TO BATH  
VENT

LSH-2 3

PANEL-SOLAR 100 WATT  
191276-01-CHT  
BRACKET-MTG,SOLAR  
191837-01-CHT (4)  
BOLT  
C26-05-12U (4)  
NUT  
D39-05-00U (4)  
SCREW  
G39-10-10U (8)

2 6 282

TO GALLEY  
VENT

DETAIL EA

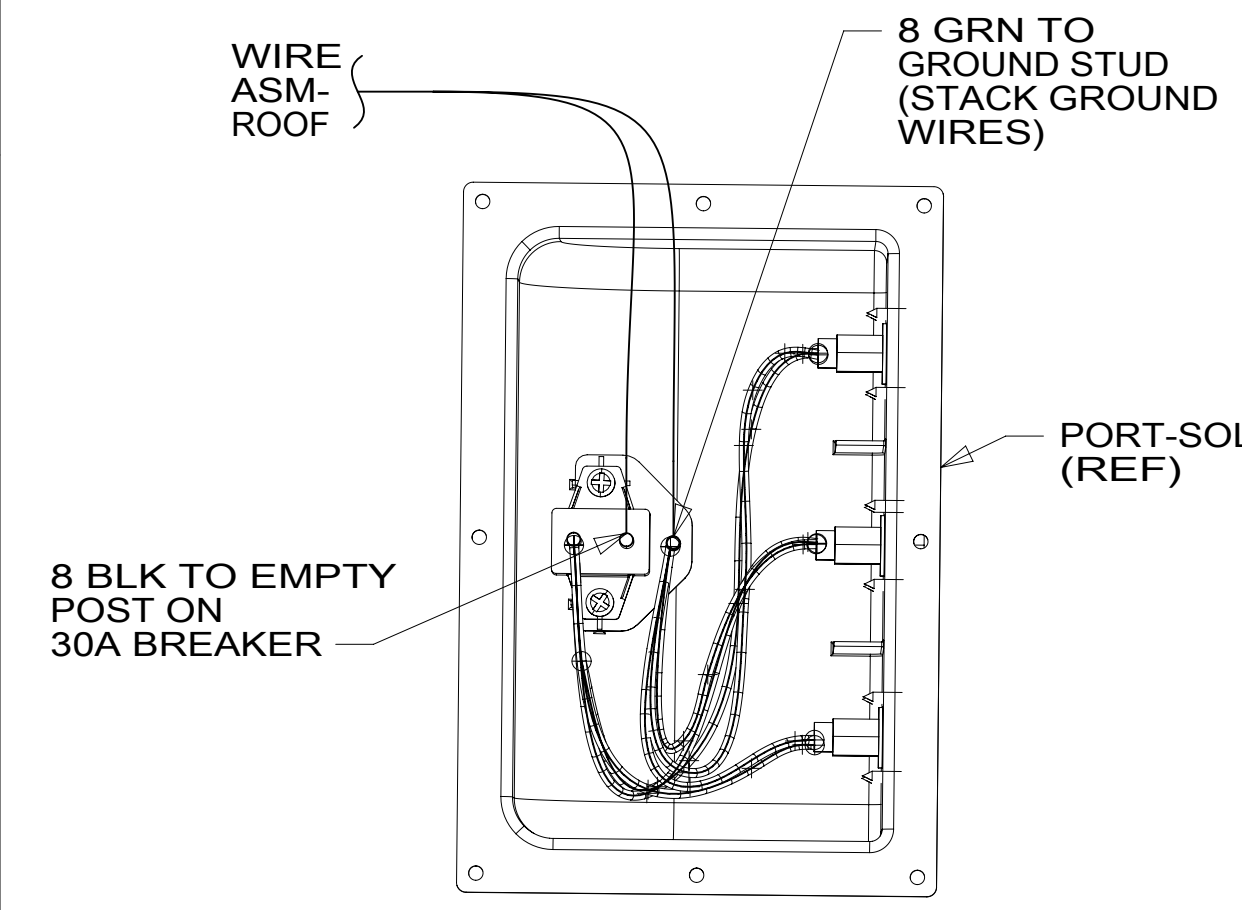
LED-2  
4

CHANNEL-HAT  
166770-01-CHT (6)  
TAPE-DOUBLE SIDE  
76322-25-000  
(12-75 MM)

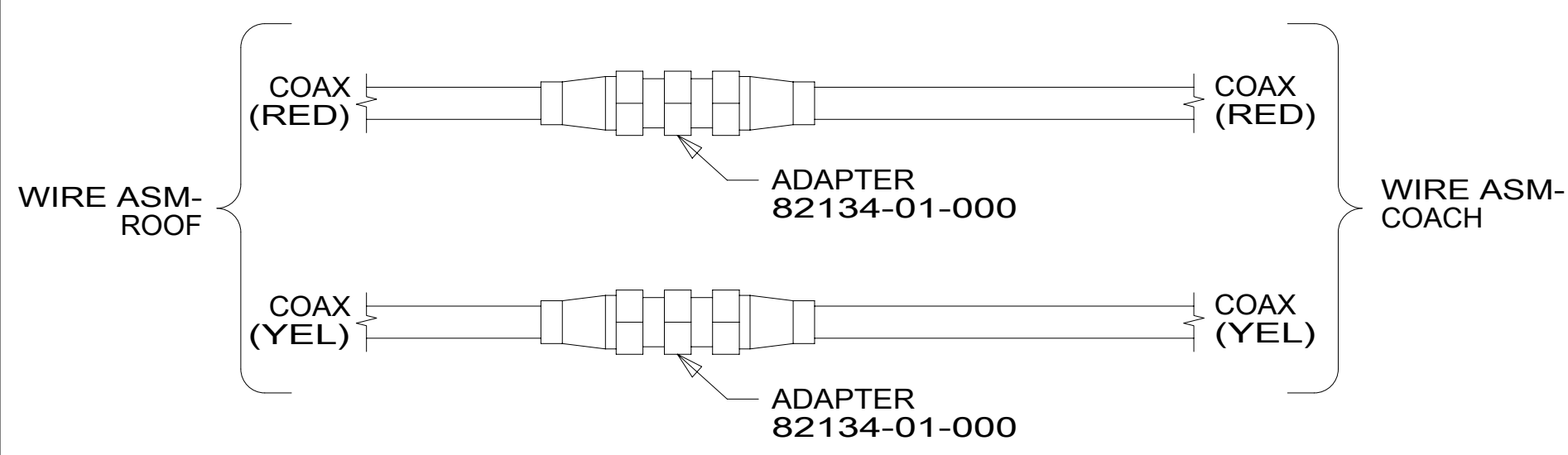
3

PANEL-SUPPORT  
166713-06-CHT  
SCREW  
G39-08-12U (6)  
SCREW  
G39-08-10U (6)

2



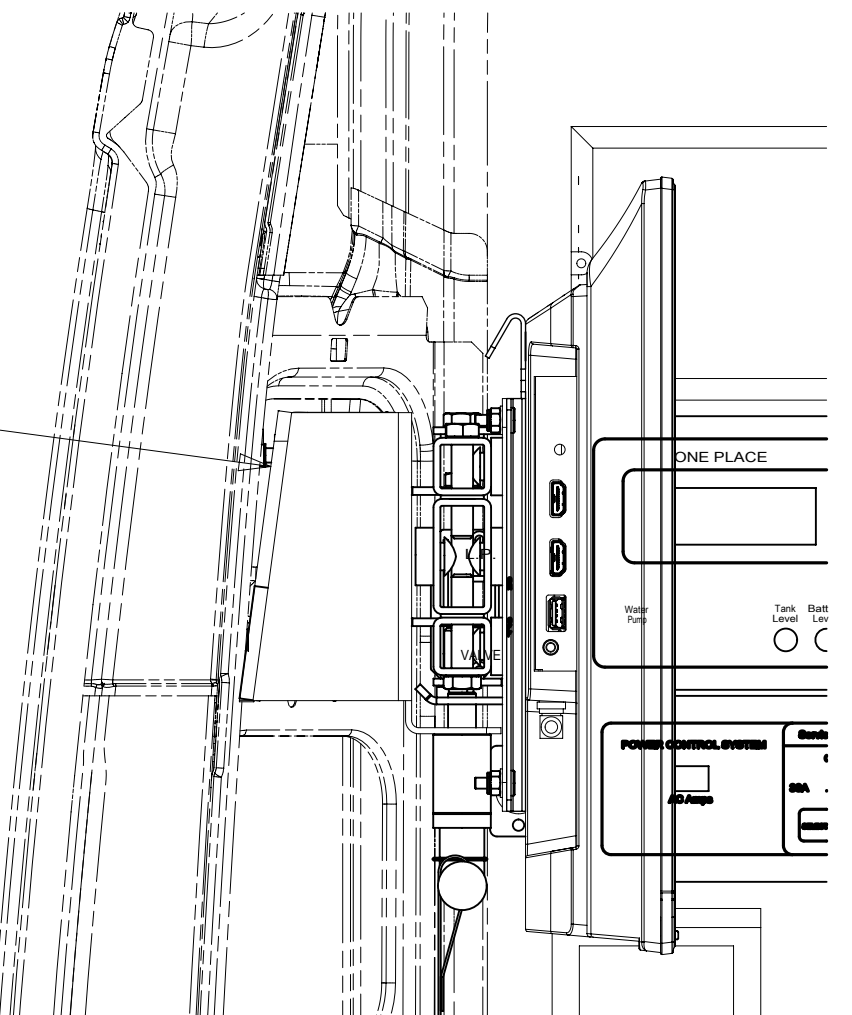
DETAIL DD 282



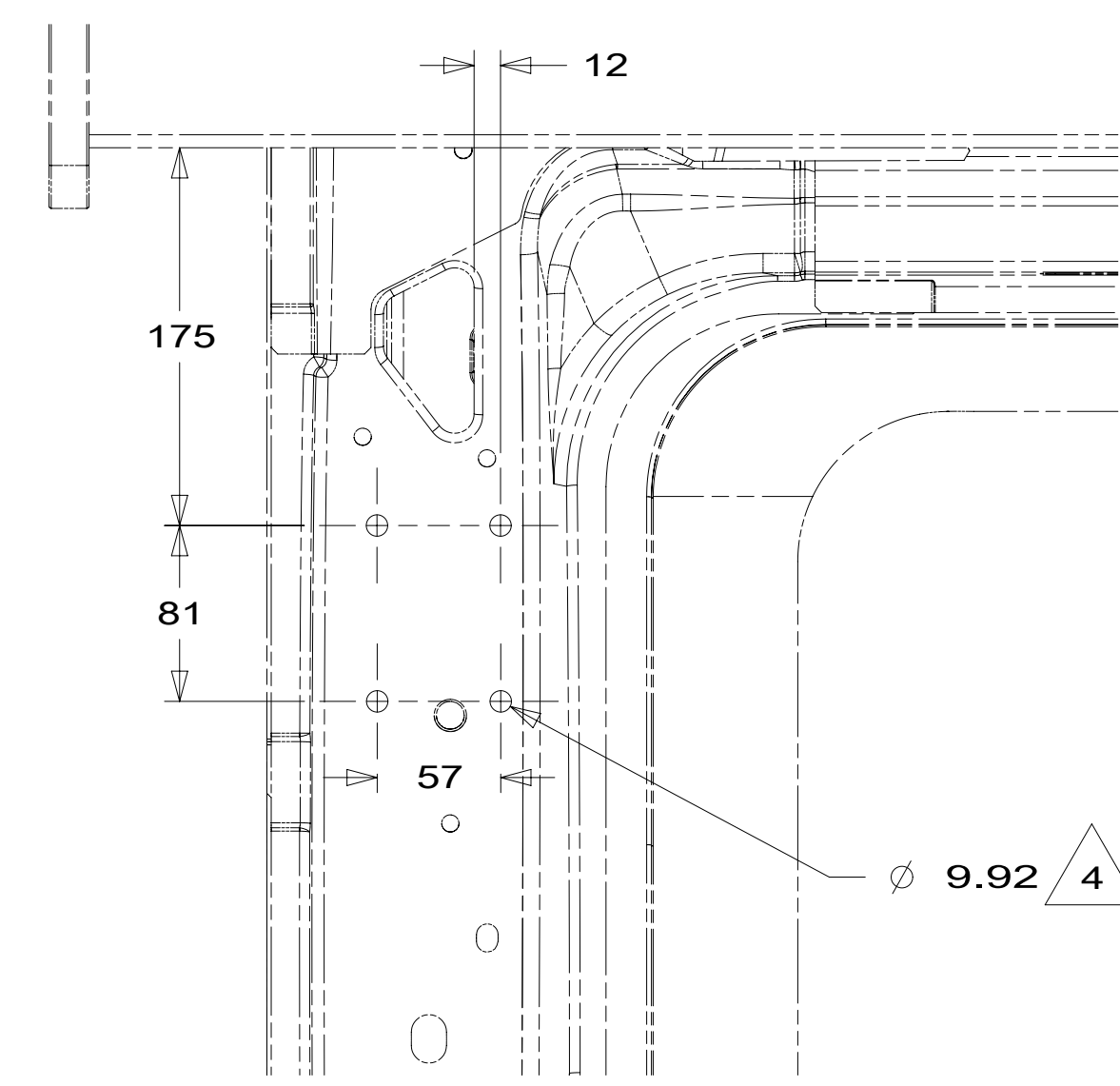
DETAIL DC

BRACKET-TV SWING MOUNT  
179241-02-CHT  
PAD-FELT 3/8  
023320-01-000 (3)  
(ADHERE TO RUBBER  
BUMPER ON BRACKET)  
NUT-SERT  
39715-01-000 (4)  
BOLT  
C26-04-12B (4)  
WASHER  
000E13-04-00U (6)  
SEAL-FOAM TAPE  
154585-07-CHT  
(370 MM)  
CONDUIT-CONVOLUTE  
41953-01-000  
(1200 MM)

5



VIEW DA



VIEW DB

- 6 ADJUST ROOF RAILS AND KAYAK CARRIERS SO THAT THEY ARE NOT DIRECTLY OVER SOLAR PANEL.
- 5 COVER ALL WIRES AND CABLES WITH CONVOLUTED TUBING. SECURE TO TV BRACKET SO THAT WIRES AND CABLES DO NOT BECOME PINCHED.
- 4 LOCATE HOLES TO MATCH PANEL-REAR,RH.
- 3 MOUNTED ON INTERIOR SURFACE OF ROOF.
- 2 MOUNTED ON EXTERIOR SURFACE OF ROOF.

1. ALL WIRES TO BE SECURED WITH CLAMP 10495 OR 10497 OR WIRE TIE 8343 OR 108046 EVERY 600MM, USE SCREW G67-XX-XXX OR G56-XX-XXX AS APPROPRIATE FOR INSTALLATION.

NOTES:

FOR ELECTRICAL  
TORQUE  
SPECIFICATIONS  
SEE DWG NO.  
128783-01-000

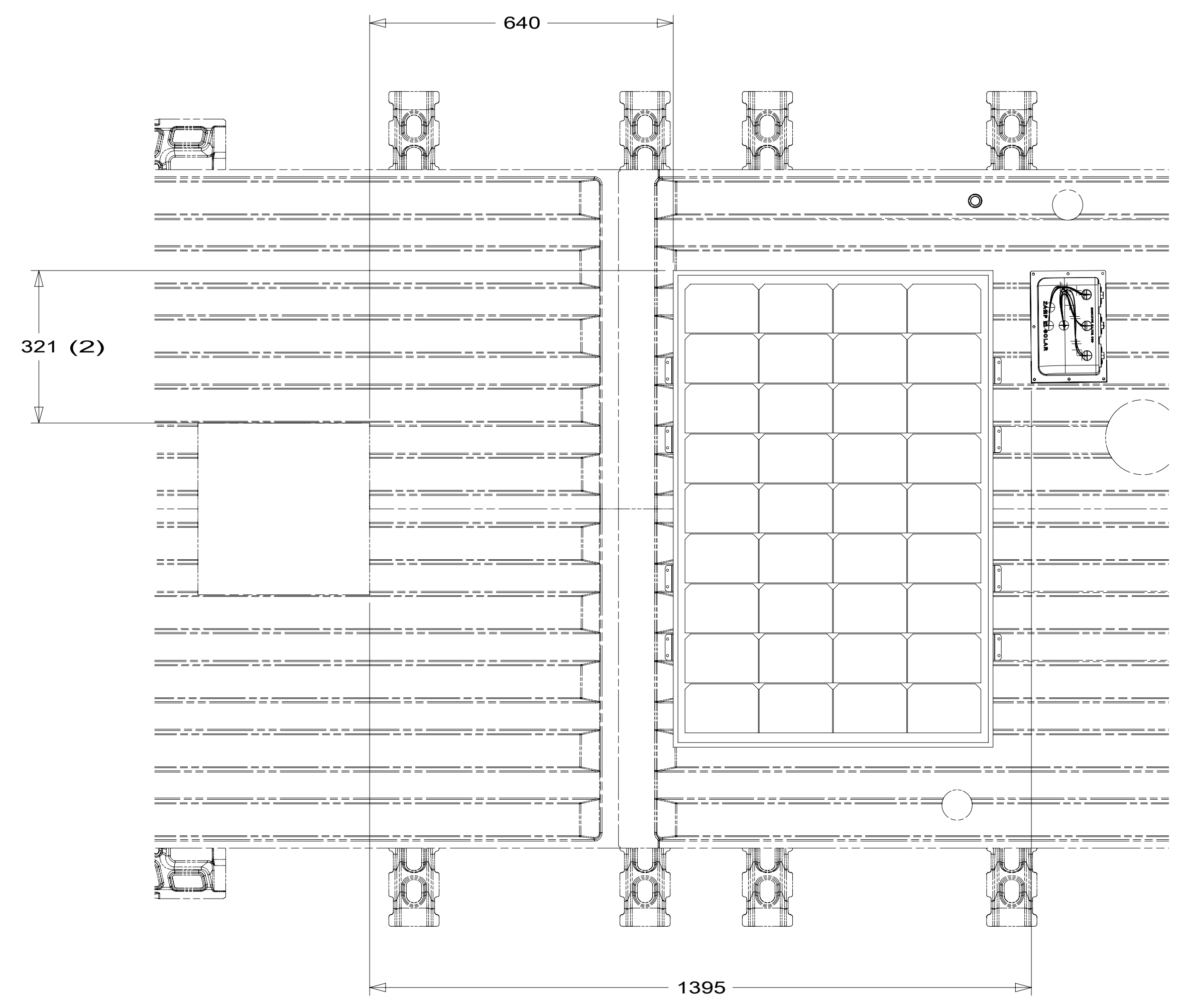
FOR  
ELECTRICAL  
CALLOUTS  
SEE DWG NO.  
121339-01-000

- 282 SOLAR PANEL - 100 WATT
- 265 CODES/STANDARDS-CSA/CMVSS
- 1B1 CODES/STANDARDS USA

DESCRIPTION: <b>WIRING INSTL-BODY, 12V</b>		
SHEET: 4 OF 5	ITEM/PART NO: 000200755 / 30072601000	REV

8 7 6 5 4 3 2 1

D  
C  
B  
A



DETAIL EA 2

2 ADJUST ROOF RAILS AND KAYAK CARRIER SO THAT THEY ARE NOT DIRECTLY OVER SOLAR PANEL.

1. ALL WIRES TO BE SECURED WITH CLAMP 10495 OR 10497 OR WIRE TIE 8343 OR 108046 EVERY 600MM, USE SCREW G67-XX-XXX OR G56-XX-XXX AS APPROPRIATE FOR INSTALLATION.

NOTES:

FOR ELECTRICAL TORQUE SPECIFICATIONS SEE DWG NO. 128783-01-000

FOR ELECTRICAL CALLOUTS SEE DWG NO. 121339-01-000

265 CODES/STANDARDS-CSA/CMVSS  
1B1 CODES/STANDARDS USA

DESCRIPTION:		1B1 265
<b>WIRING INSTL-BODY, 12V</b>		
SHEET:	ITEM/PART NO.:	REV
5 OF 5	000200755 / 30072601000	

8 7 6 5 4 3 2 1 05-Oct-2016