

FRONT
OF
COACH

CA

BB

BB

BA

- 9. SEE DRAWING 061607 FOR INSTALLATION OF GROMMETS.
- 8. SECURE DRAINAGE PIPES TO CABINET USING WIRE TIE 108046-02-000, AND SCREW 000G67-10-12U AT INTERVALS OF NOT OF NOT MORE THAN 4 FEET APART.
- 7. SECURE VENT PIPE TO FLOOR WITH CLAMP 062401-02-000 (3), SCREW 000G67-10-12U (3), BRACKET 136878-01-CHT (3).
- 6. VENT PIPE MUST PROJECT 51 MIN AND 64 MAX ABOVE ROOF FOR PROPER FIT AND FUNCTION. ADD S-1 (116666-01-CHT SEAL-VENT PIPE) AROUND PIPE ON ROOF BEFORE VENT CAP IS INSTALLED.
- 5. SEAL AROUND SHOWER WITH SILICONE.
- 4. USE SMOOTH PLUMBERS PUTTY 167459-01-000 TO SEAL STRAINER (0.2 PER STRAINER).
- 3. ALL PIPE AND FITTINGS TO BE ASSEMBLED WITH SOLVENT 004020-01-000 (USA), 004020-02-000 (CAN)
- 2. SLOPE OF TRAP ARM MUST BE 6 PER 305 mm.
- 1. SLOPE OF HORIZONTAL PIPING TO BE MINIMUM OF 3 PER 305 mm.

265 CODES/STDS-CSA/CMVSS

1B1 CODES/STANDARDS-USA



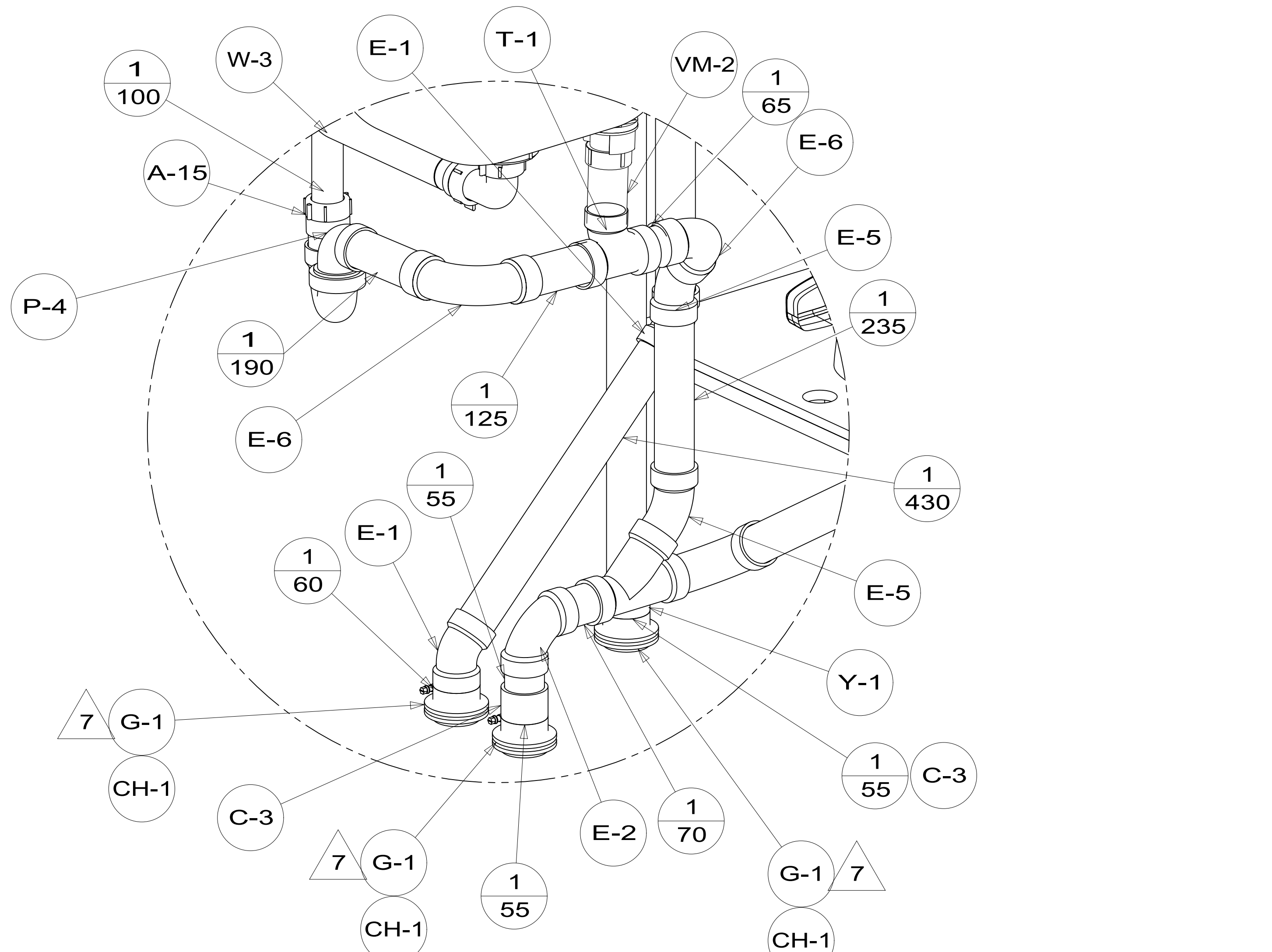
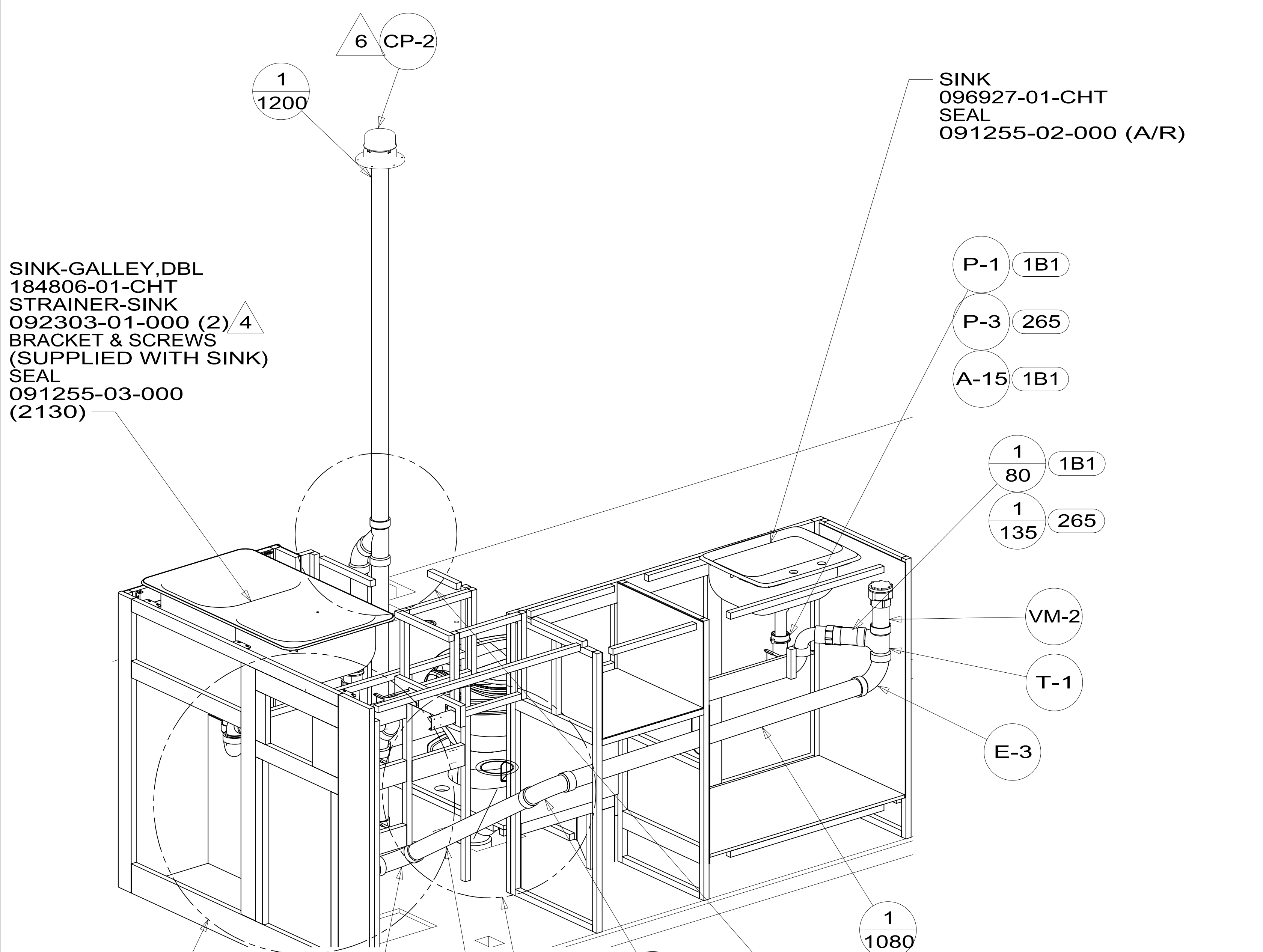
| | | | |
|--|------------------------|-----------------------------------|-------------------|
| DSNR: | | ALL DIMENSIONS ARE IN MILLIMETERS | |
| DIFFR: | | MATERIAL: | |
| UNSPECIFIED TOLERANCES: | | | |
| WHOLE DIM (X) | 3 | | |
| ONE-PLACE (X.X) | 1.5 | | |
| TWO-PLACE (X.XX) | 0.50 | | |
| ANGLE | 1° | | |
| REFER TO ES0018 FOR FASTENER TIGHTENING GUIDELINES | | WEIGHT: (LBS) | FIRST USED: (REF) |
| | | | 16 E30T |
| DESCRIPTION: | | | |
| DRAINAGE SYSTEM INSTL | | | |
| SHEET: | ITEM/PART NO.: | REV | |
| 1 OF 4 | 00021962 / 30040001000 | | |

FOR
DRAINAGE
CALLOUTS
SEE DWG NO.
00021962 /
303370-01-000

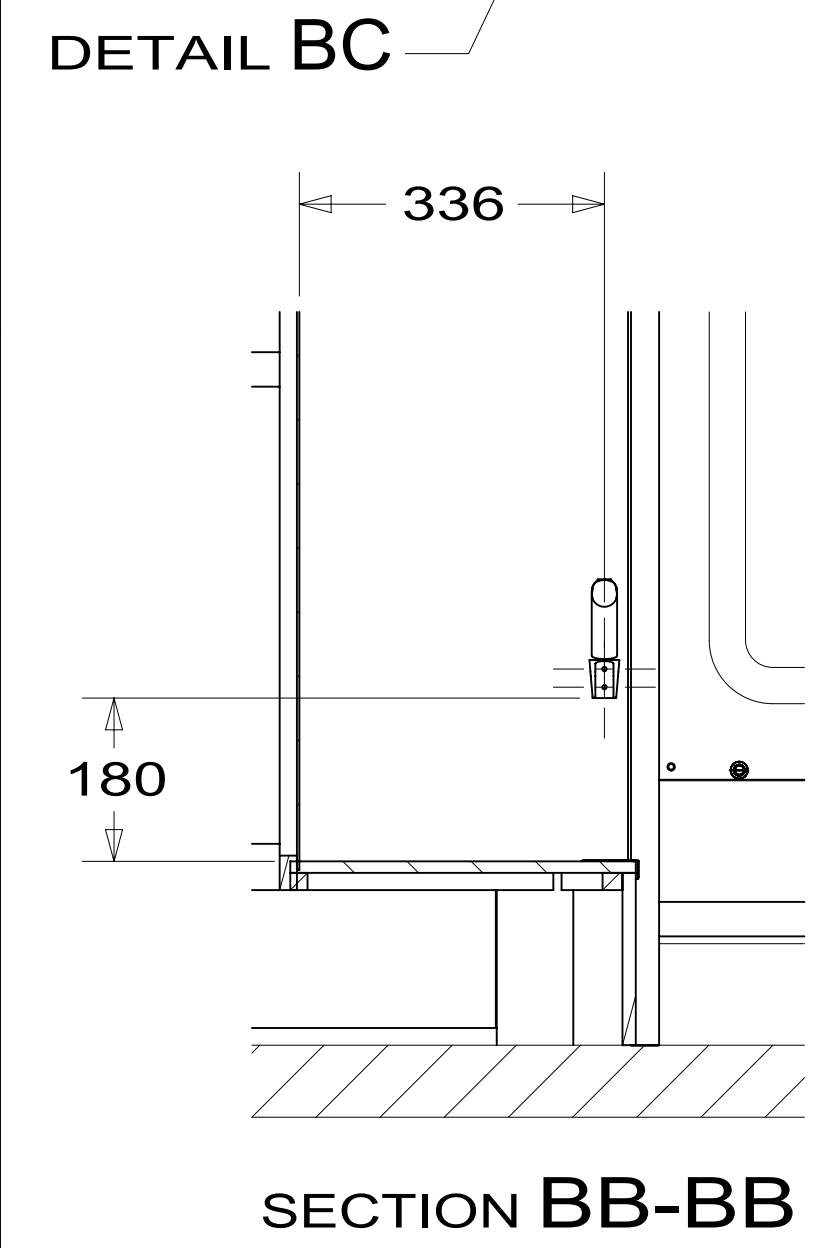
NOTES:

SINK-GALLEY, DBL
 184806-01-CHT
 STRAINER-SINK
 092303-01-000 (2) 4
 BRACKET & SCREWS
 (SUPPLIED WITH SINK)
 SEAL
 091255-03-000
 (2130)

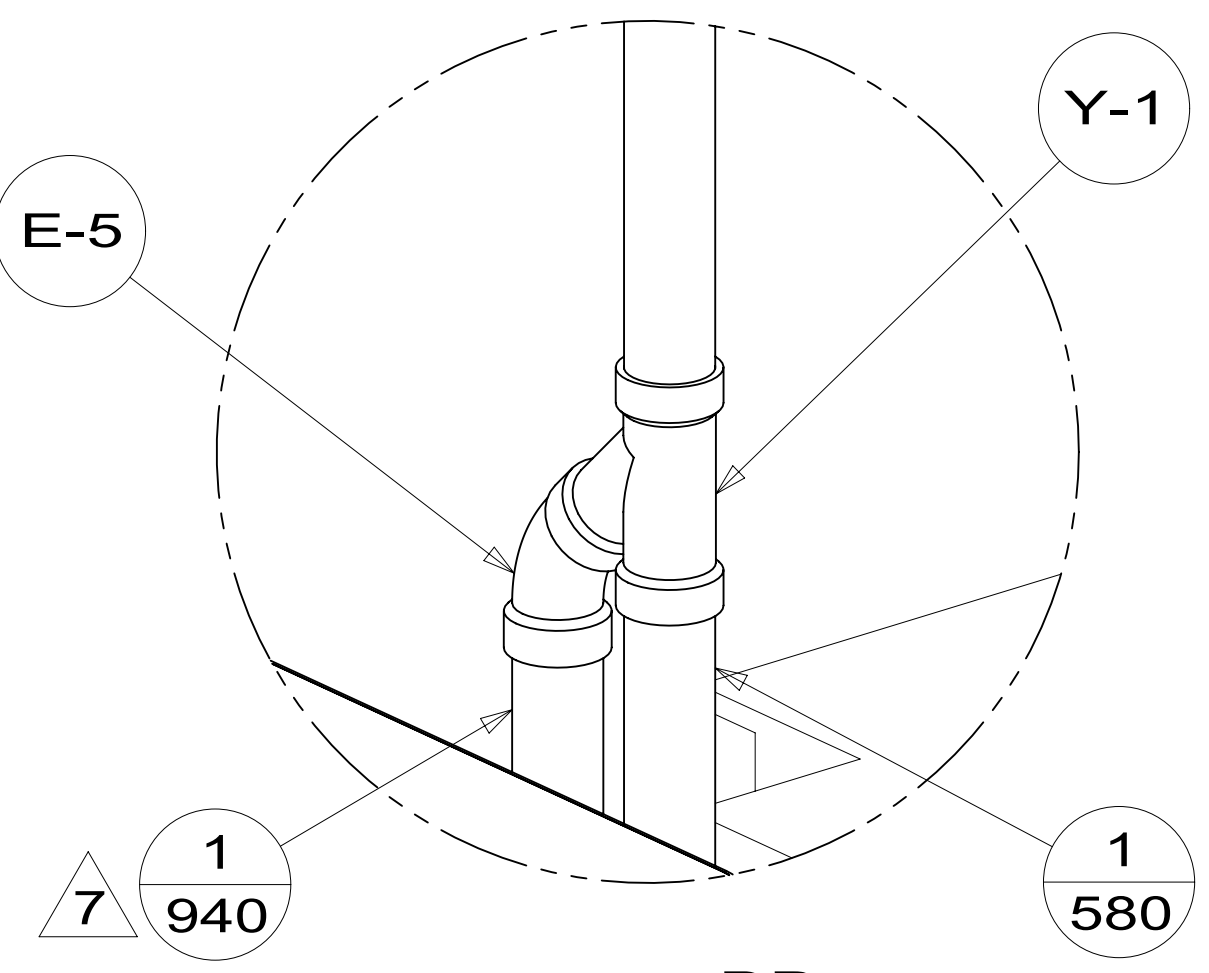
SINK
 096927-01-CHT
 SEAL
 091255-02-000 (A/R)



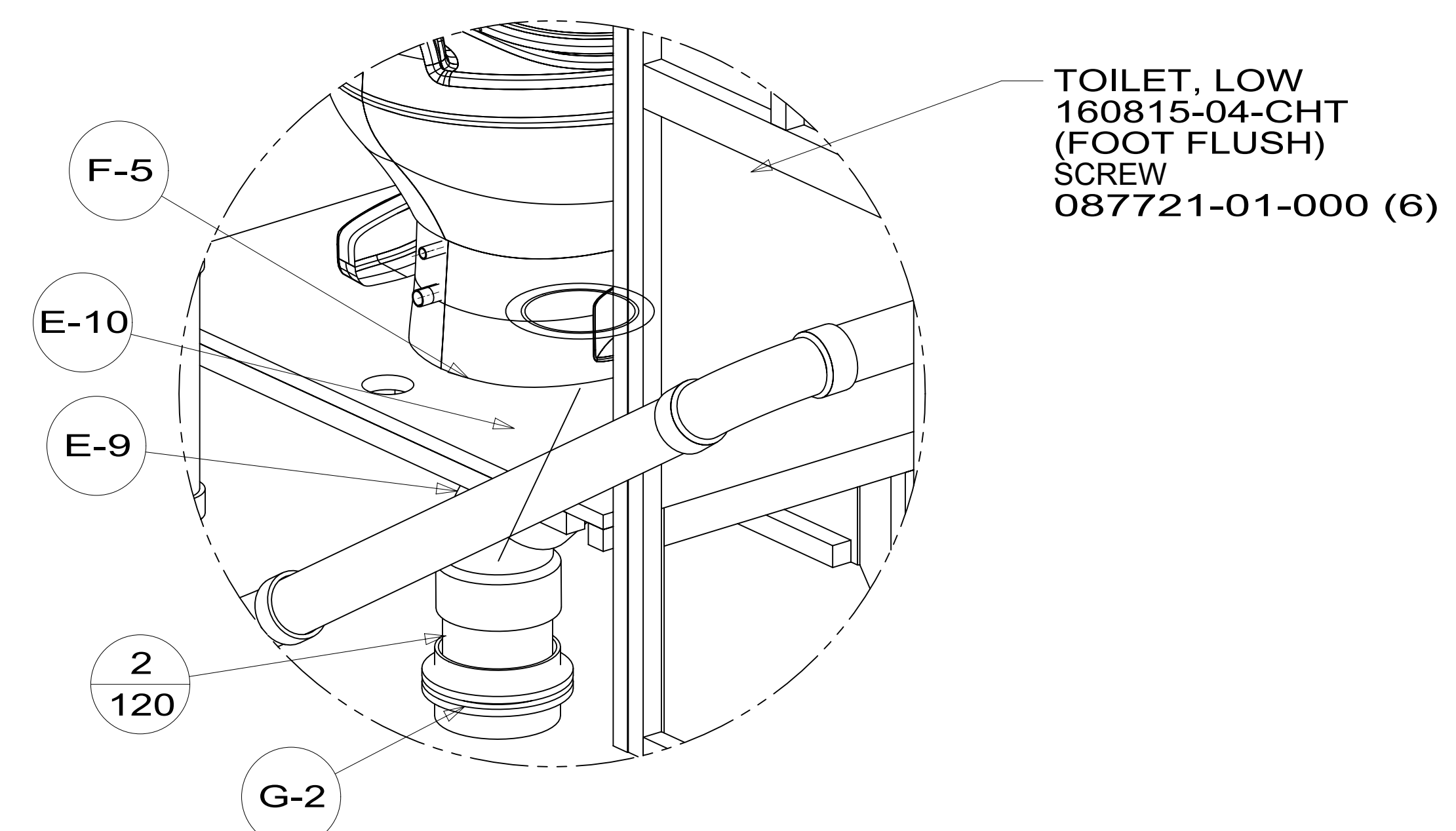
DETAIL BC
 (SHOWN W/OUT CABINETS AND FLOOR)



VIEW BA

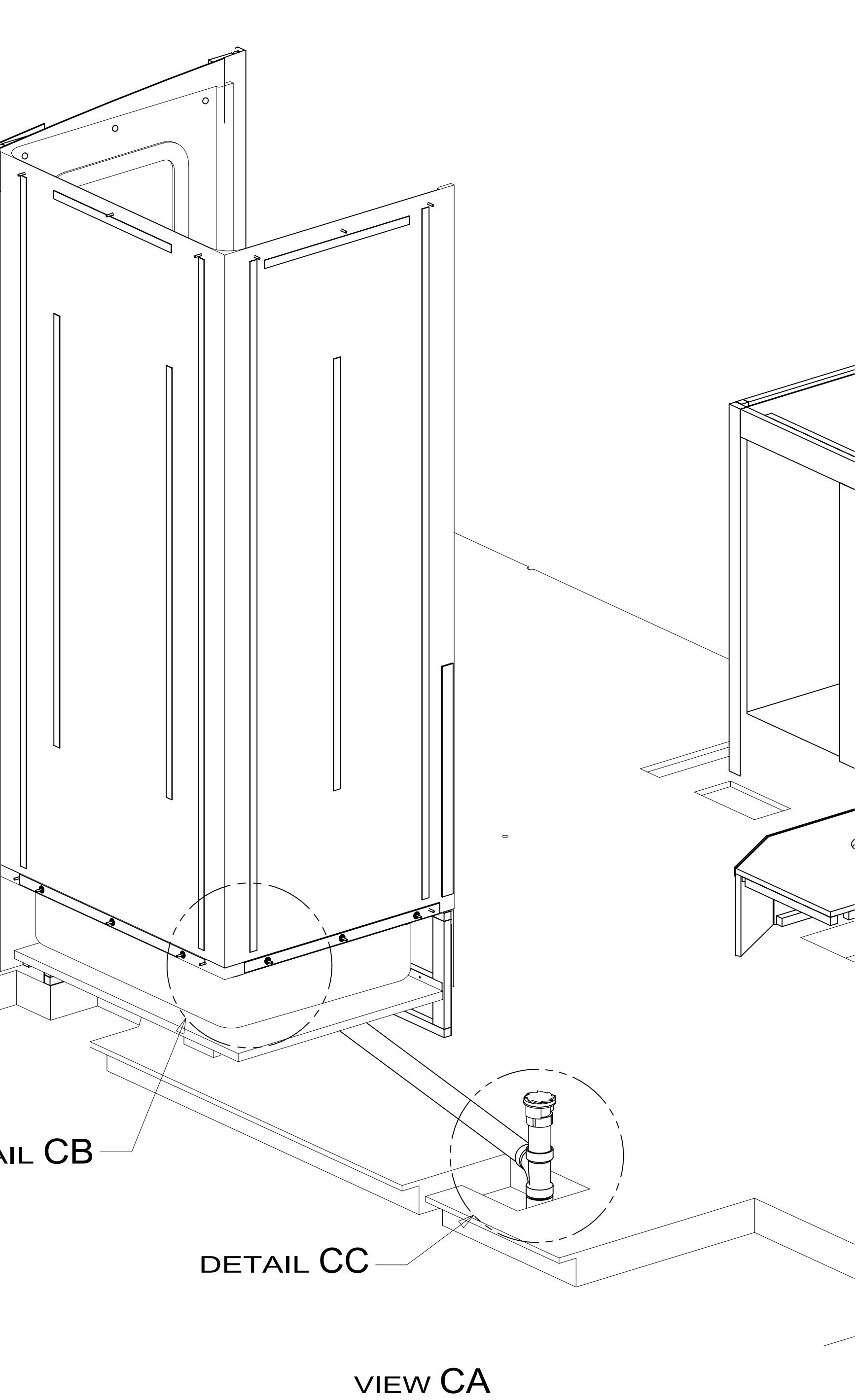


DETAIL BD
 (SHOWN W/OUT CABINETS)



DETAIL BE
 (SHOWN W/OUT CABINETS AND FLOOR)

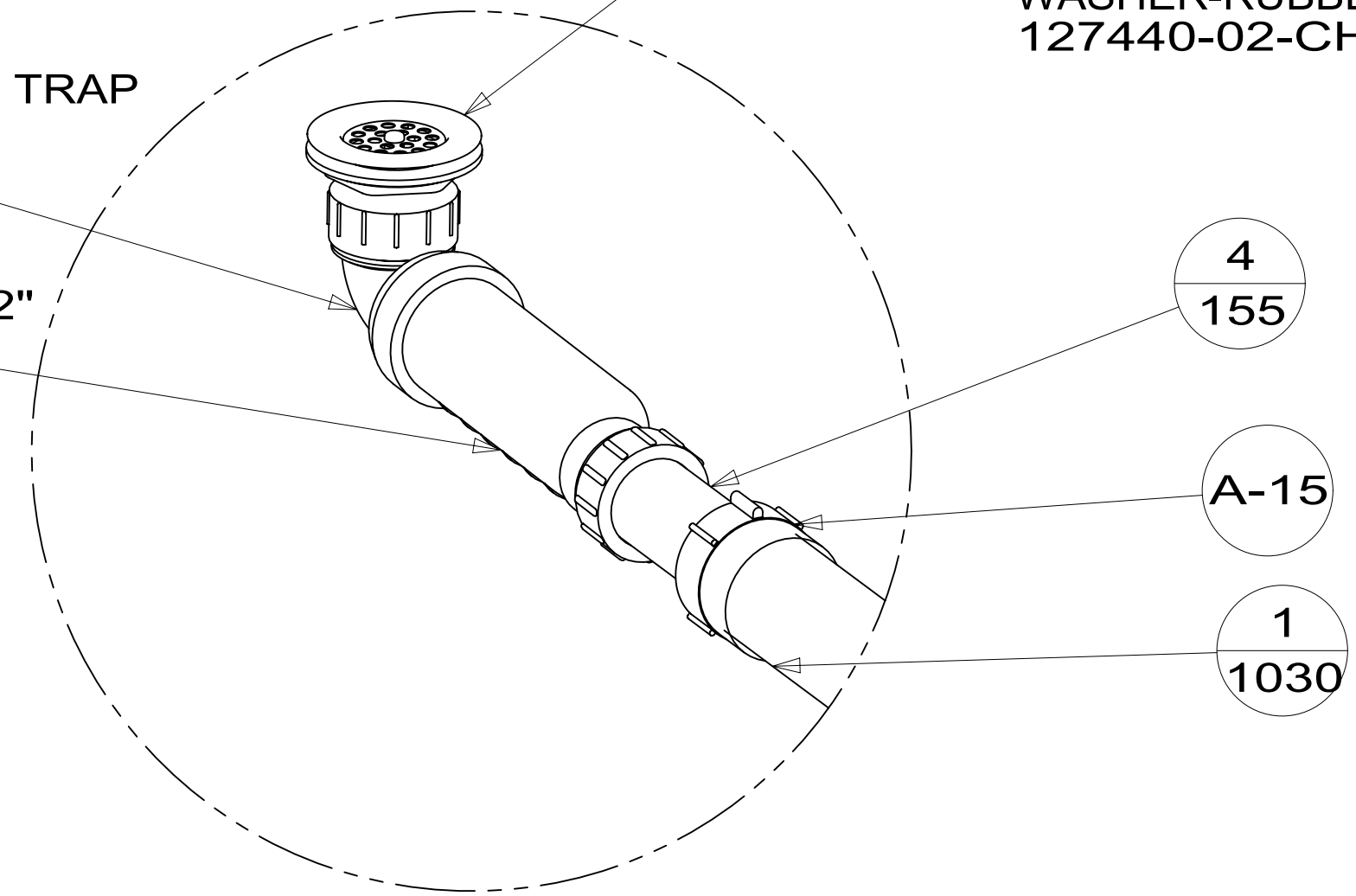
| | | |
|---------------------------------------|--|---------------|
| DESCRIPTION: DRAINAGE SYSTEM INSTL | | |
| SHEET: 2 OF 4 | ITEM/PART NO: 000200529 / 30040001000 | REV |
| | | 1 31-Aug-2017 |



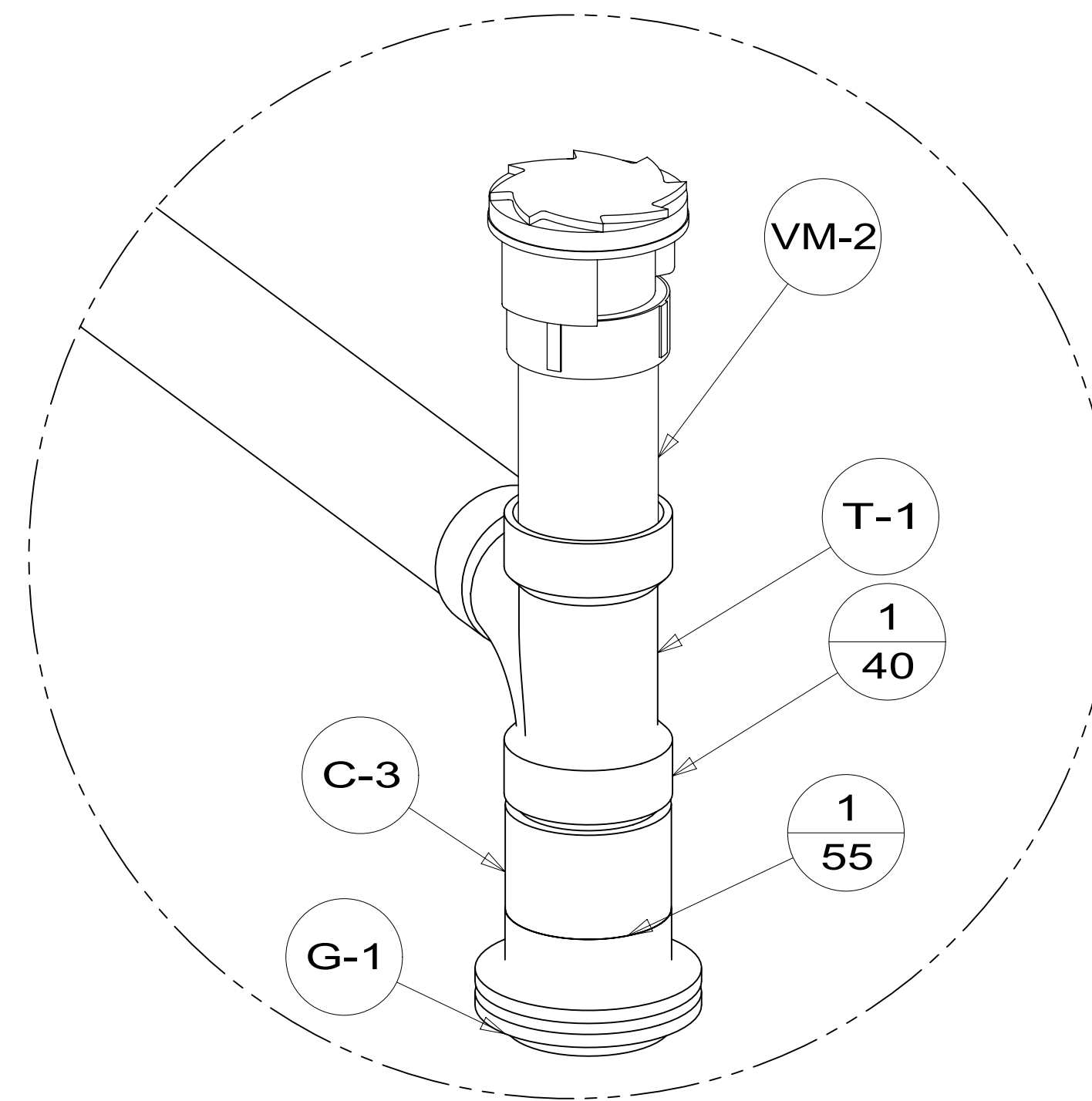
ADAPTER-ANGLE, WATERLESS TRAP
165406-02-000

TRAP-WATERLESS, 1-1/2"
165406-01-000

SHOWER INSTL-ENCLOSURE
189050-04-000
STRAINER
066440-01-000
SEALER
069640-01-000
WASHER-RUBBER
127440-02-CHT

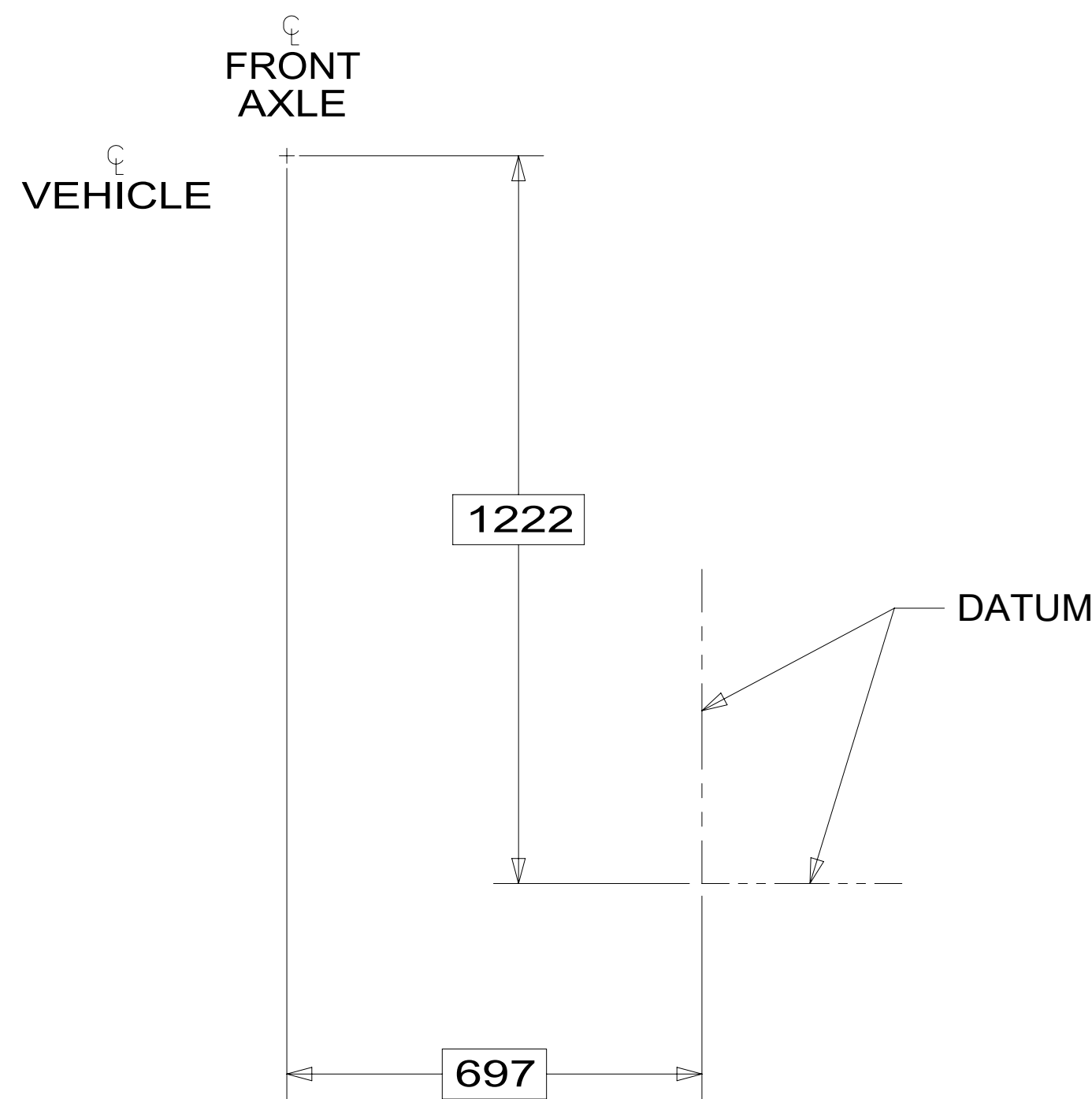
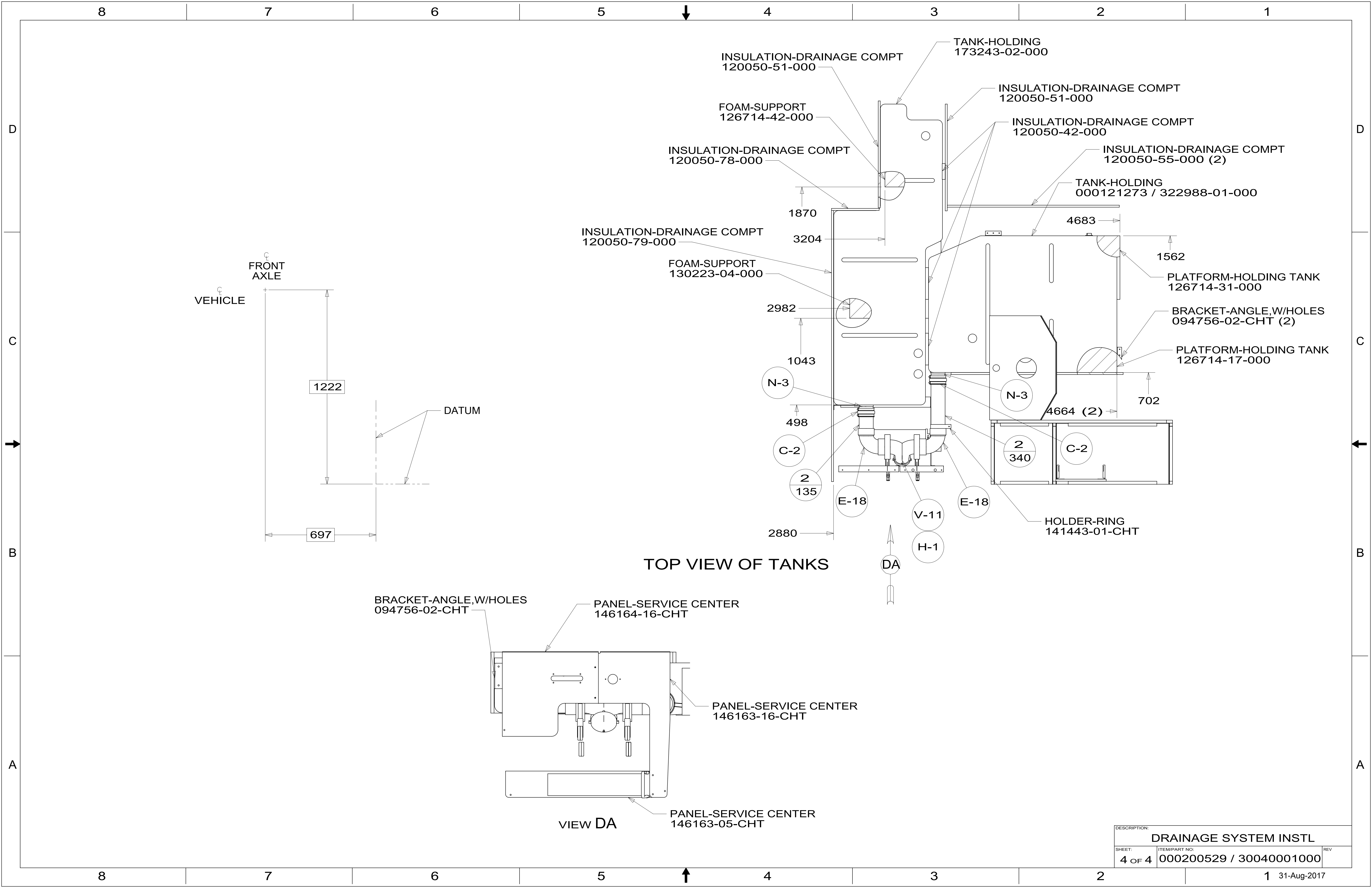


DETAIL CB
(SHOWN W/OUT SHOWER PAN AND FLOOR)

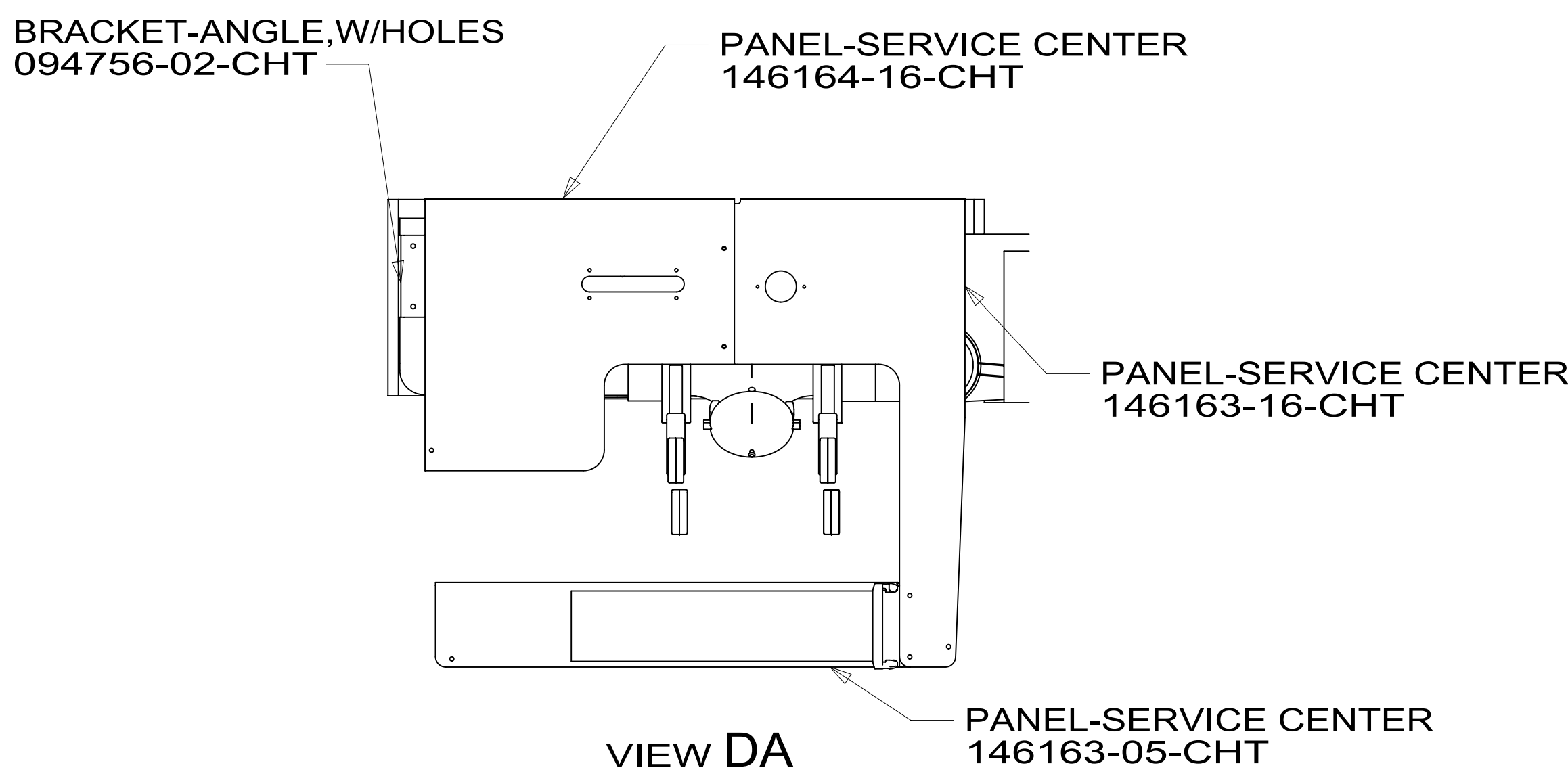


DETAIL CC
(SHOWN W/OUT CABINETS AND FLOOR)

| | | |
|--|--|-----|
| DESCRIPTION: DRAINAGE SYSTEM INSTL | | |
| SHEET: 3 OF 4 | ITEM/PART NO: 000200529 / 30040001000 | REV |



TOP VIEW OF TANKS



| | | |
|-----------------------|-------------------------|-----|
| DESCRIPTION: | | |
| DRAINAGE SYSTEM INSTL | | |
| SHEET: | ITEM/PART NO.: | REV |
| 4 OF 4 | 000200529 / 30040001000 | |