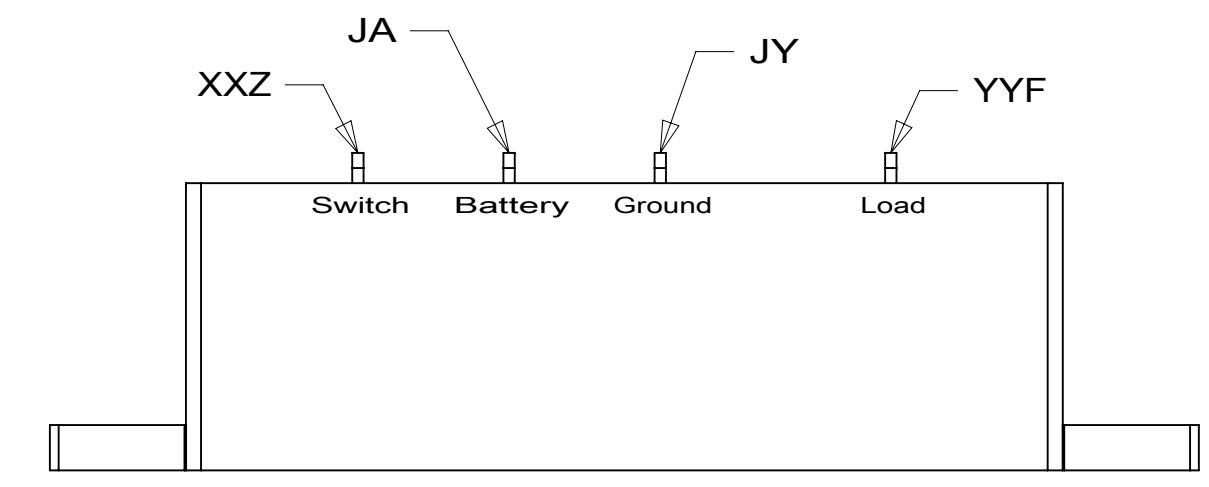


PLATE-WALL, DUAL COAX
149557-03-CHT
SCREW
G39-08-08U (2)

VIEW AA



DETAIL AB

2 PIN HSG
TO WATER PUMP
MODULE-WATER PUMP
176001-01-000
DETAIL AB

4 WIRE DROP
TO FURNACE
(PART OF WIRE
ASM-CHASSIS)

WIRE ASM-WATER TANK
151317-01-000

PANEL-RECEPTACLE
151376-01-CHT
SCREW
G67-10-12B (4)
PANEL-RECEPTACLE
151376-02-CHT
LABEL-COAX
157486-01-CHT
ADAPTER
82134-01-000
NUT
82136-01-000
SCREW
G67-10-12B (4)

1DG

299

- 4 WIRE PASSES THROUGH FLOOR IN THIS AREA.
- 3 PLACE CROSS LOCATOR ON SENSOR OVER DIMPLES ON TANK.

2. ROUTE TANK SENSOR WIRES SO THEY DO NOT PASS OVER SENSORS. USE WIRE TIE MOUNT 155366-01-000 AND WIRE TIE 8343-01-000 AS NEEDED. TANK SURFACE MUST BE CLEANED USING ISOPROPYL ALCOHOL AND PRIMED WITH PRIMER 94.

1. AT MINIMUM ALL WIRES TO BE SUPPORTED AND SECURED PER CODE REQUIREMENTS. USE CLAMP 10495 OR 10497 OR WIRE TIE 8343 OR 108046 AND SCREW G67-XX-XXX OR G56-XX-XXX AS APPROPRIATE FOR INSTALLATION.

NOTES:

FOR ELECTRICAL
TORQUE
SPECIFICATIONS
SEE DWG NO.
128783-01-000

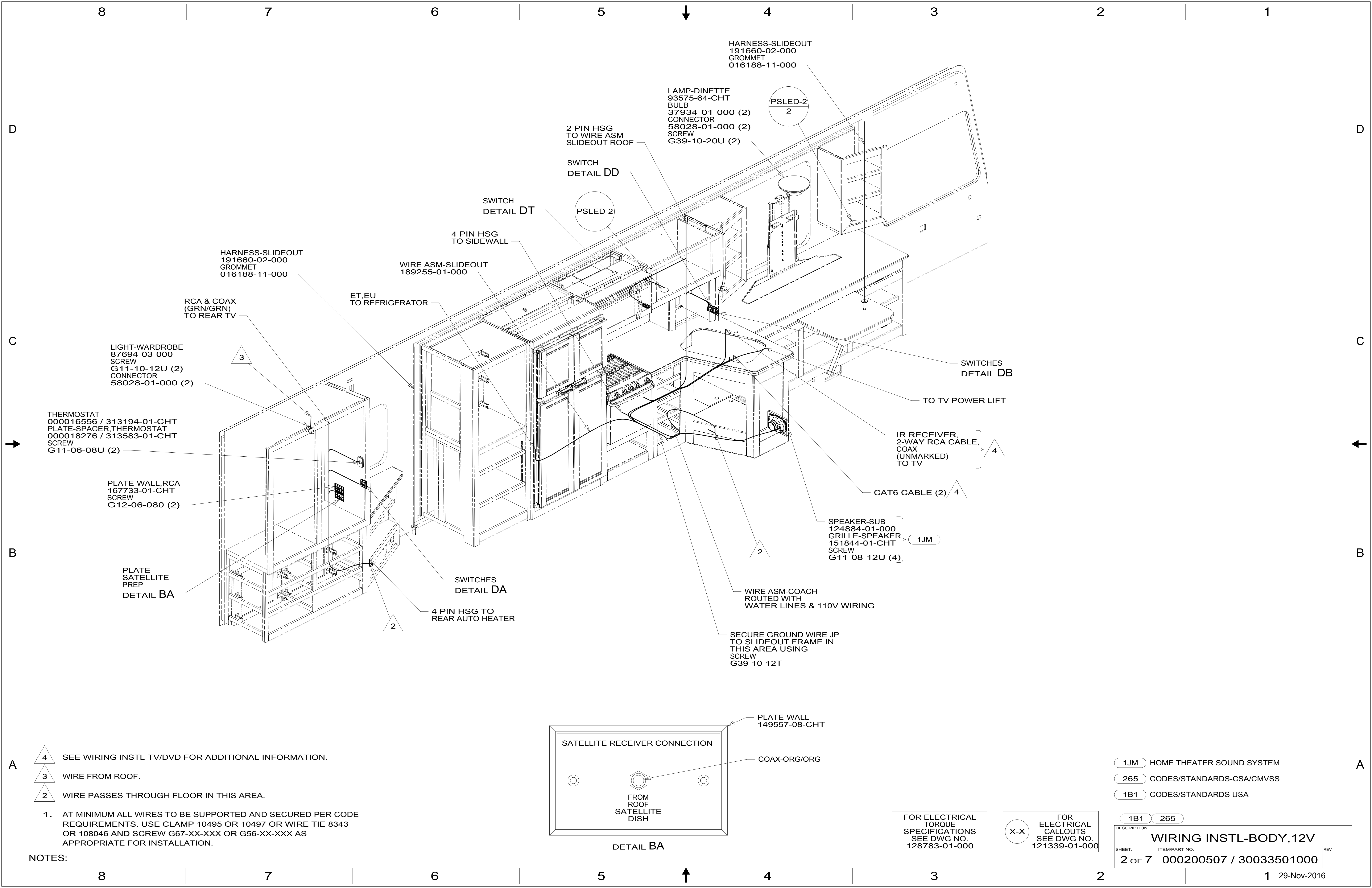
FOR ELECTRICAL
CALLOUTS
SEE DWG NO.
121339-01-000

- 1DG EXT ENTERTAIN CTR W/TV & CD
- 299 ENTERTAINMENT CENTER EXT.W/O
- 265 CODES/STANDARDS-CSA/CMVSS
- 1B1 CODES/STANDARDS USA

1B1 265



DSNR:		ALL DIMENSIONS ARE IN MILLIMETERS	
DFFR:		MATERIAL:	
UNSPECIFIED TOLERANCES:			
WHOLE DIM (X)	: 3		
ONE-PLACE (X.X)	: 1.5		
TWO-PLACE (X.XX)	: 0.50		
ANGLE	: 1°		
REFER TO ES0018 FOR FASTENER TIGHTENING GUIDELINES		WEIGHT: (LBS)	FIRST USED:
			16 D33C
DESCRIPTION: WIRING INSTL-BODY, 12V			
SHEET:	ITEM/PART NO.:	REV:	
1 OF 7	000200507 / 30033501000		
REF:		1 29-Nov-2016	



HARNESS-SLIDEOUT
191660-02-000
GROMMET
016188-11-000

RCA & COAX
(GRN/GRN)
TO REAR TV

LIGHT-WARDROBE
87694-03-000
SCREW
G11-10-12U (2)
CONNECTOR
58028-01-000 (2)

THERMOSTAT
000016556 / 313194-01-CHT
PLATE-SPACER, THERMOSTAT
000018276 / 313583-01-CHT
SCREW
G11-06-08U (2)

PLATE-WALL, RCA
167733-01-CHT
SCREW
G12-06-080 (2)

PLATE-
SATELLITE
PREP
DETAIL BA

HARNESS-SLIDEOUT
191660-02-000
GROMMET
016188-11-000

ET, EU
TO REFRIGERATOR

WIRE ASM-SLIDEOUT
189255-01-000

4 PIN HSG
TO SIDEWALL

SWITCH
DETAIL DT

2 PIN HSG
TO WIRE ASM
SLIDEOUT ROOF

LAMP-DINETTE
93575-64-CHT
BULB
37934-01-000 (2)
CONNECTOR
58028-01-000 (2)
SCREW
G39-10-20U (2)

HARNESS-SLIDEOUT
191660-02-000
GROMMET
016188-11-000

PSLED-2
2

SWITCH
DETAIL DD

PSLED-2

4 PIN HSG
TO SIDEWALL

SWITCHES
DETAIL DB

TO TV POWER LIFT

IR RECEIVER,
2-WAY RCA CABLE,
COAX
(UNMARKED)
TO TV

CAT6 CABLE (2)

SPEAKER-SUB
124884-01-000
GRILLE-SPEAKER
151844-01-CHT
SCREW
G11-08-12U (4)

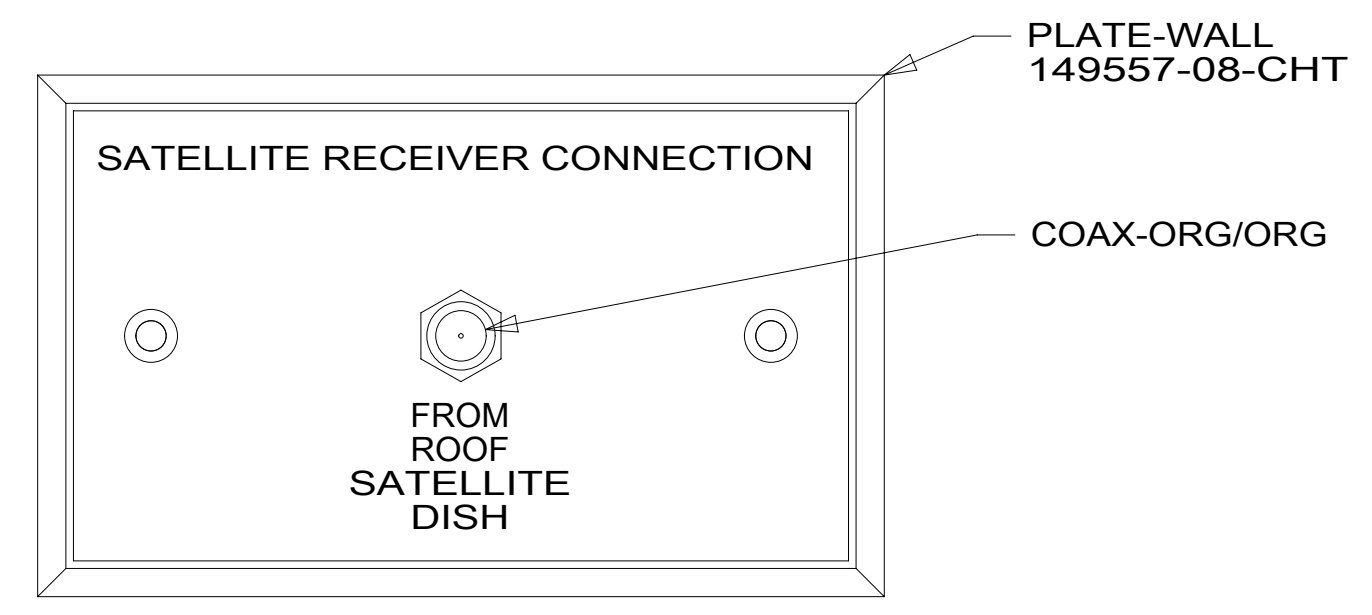
1JM

WIRE ASM-COACH
ROUTED WITH
WATER LINES & 110V WIRING

SECURE GROUND WIRE JP
TO SLIDEOUT FRAME IN
THIS AREA USING
SCREW
G39-10-12T

SWITCHES
DETAIL DA

4 PIN HSG TO
REAR AUTO HEATER



DETAIL BA

- 4 SEE WIRING INSTL-TV/DVD FOR ADDITIONAL INFORMATION.
- 3 WIRE FROM ROOF.
- 2 WIRE PASSES THROUGH FLOOR IN THIS AREA.

1. AT MINIMUM ALL WIRES TO BE SUPPORTED AND SECURED PER CODE REQUIREMENTS. USE CLAMP 10495 OR 10497 OR WIRE TIE 8343 OR 108046 AND SCREW G67-XX-XXX OR G56-XX-XXX AS APPROPRIATE FOR INSTALLATION.

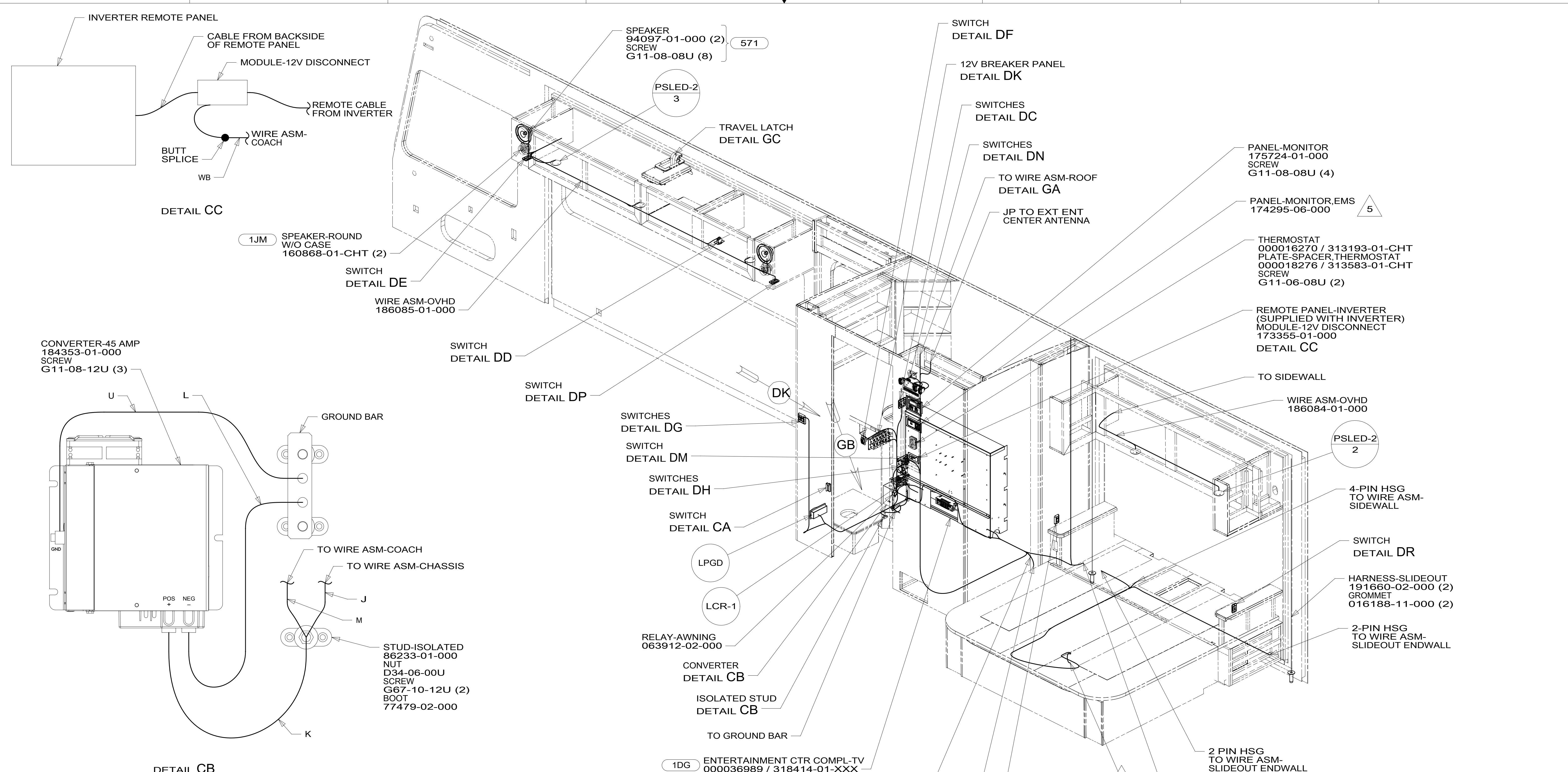
NOTES:

FOR ELECTRICAL
TORQUE
SPECIFICATIONS
SEE DWG NO.
128783-01-000

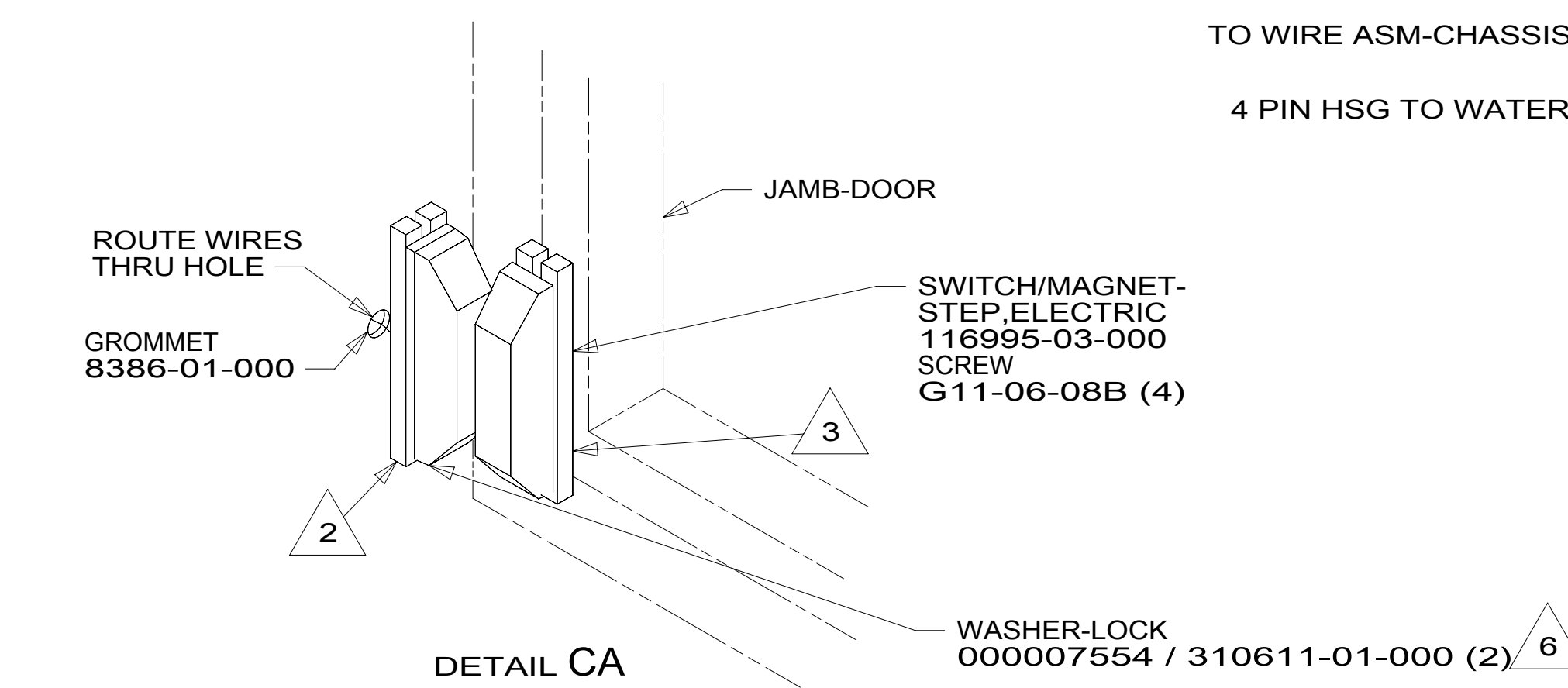
FOR ELECTRICAL
CALLOUTS
SEE DWG NO.
121339-01-000

- 1JM HOME THEATER SOUND SYSTEM
- 265 CODES/STANDARDS-CSA/CMVSS
- 1B1 CODES/STANDARDS USA

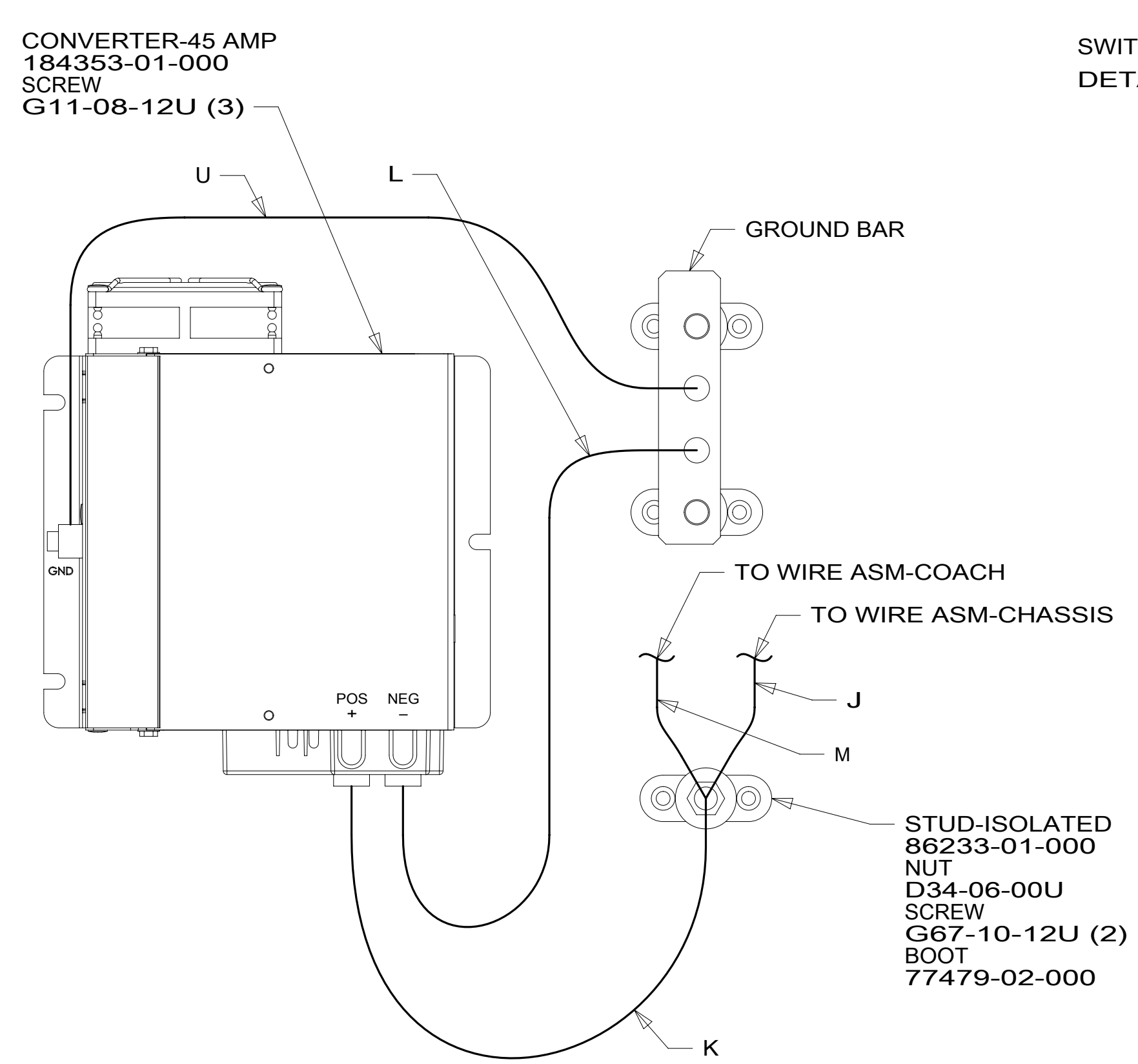
DESCRIPTION: WIRING INSTL-BODY, 12V		REV
SHEET: 2 OF 7	ITEM/PART NO: 000200507 / 30033501000	



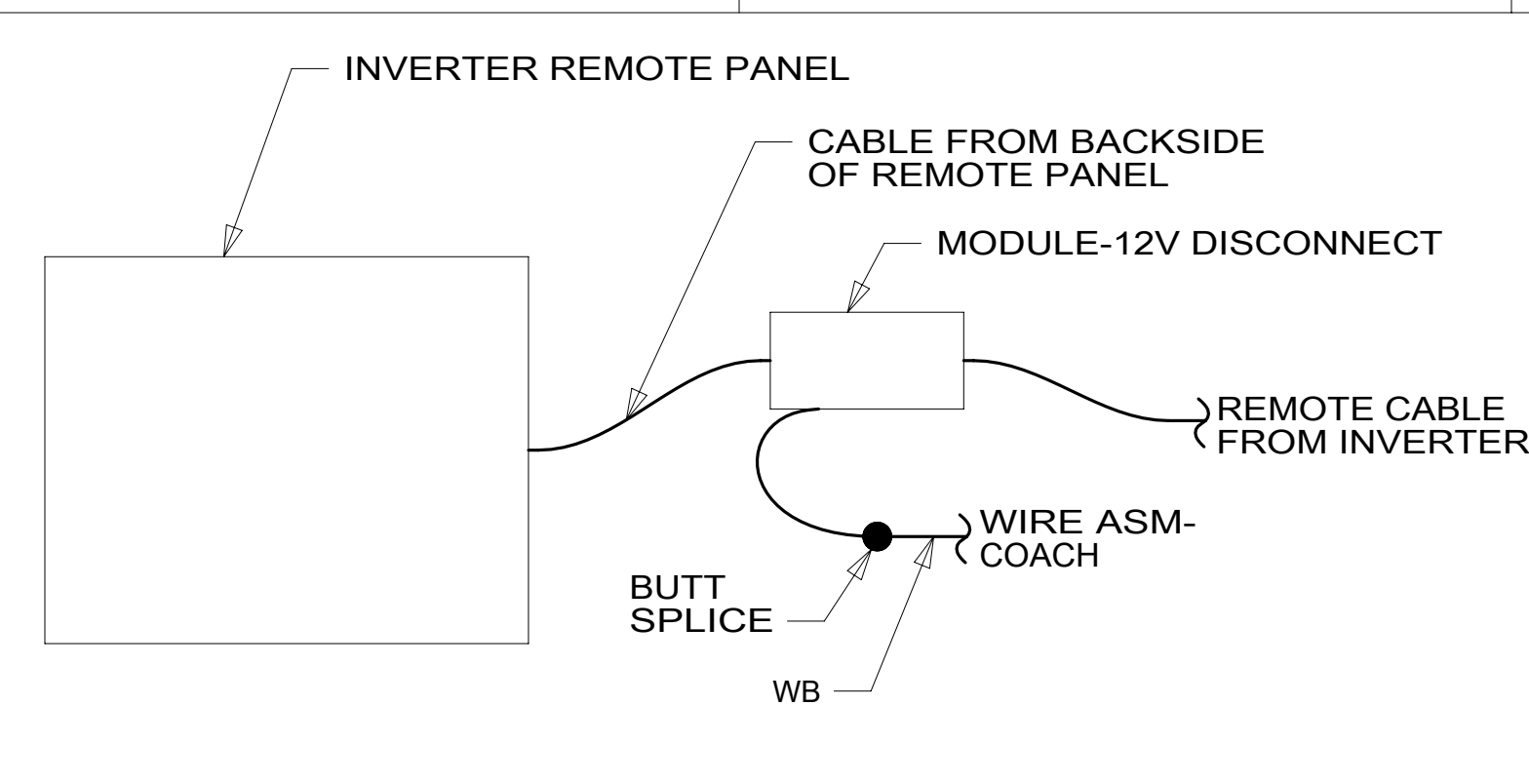
- NOTES:**
- 1. AT MINIMUM ALL WIRES TO BE SUPPORTED AND SECURED PER CODE REQUIREMENTS. USE CLAMP 10495 OR 10497 OR WIRE TIE 8343 OR 108046 AND SCREW G67-XX-XXX OR G56-XX-XXX AS APPROPRIATE FOR INSTALLATION.
 - 2. MOUNT SWITCH AND SPACER TO BLOCK ON JAMB, ADJUST HEIGHT TO MATCH MAGNET.
 - 3. MOUNT MAGNET USING PILOT HOLES IN SCREEN DOOR FRAME, MOUNT WITH MAGNET TOWARD SWITCH.
 - 4. WIRE PASSES THROUGH FLOOR IN THIS AREA.
 - 5. DATA CABLE FOR EMS IS MARKED WITH RED TAPE.
 - 6. REMOVE SCREWS FROM MAGNET SWITCH TO INSTALL LOCK WASHER AND RING TERMINALS.



DETAIL CB



DETAIL CC

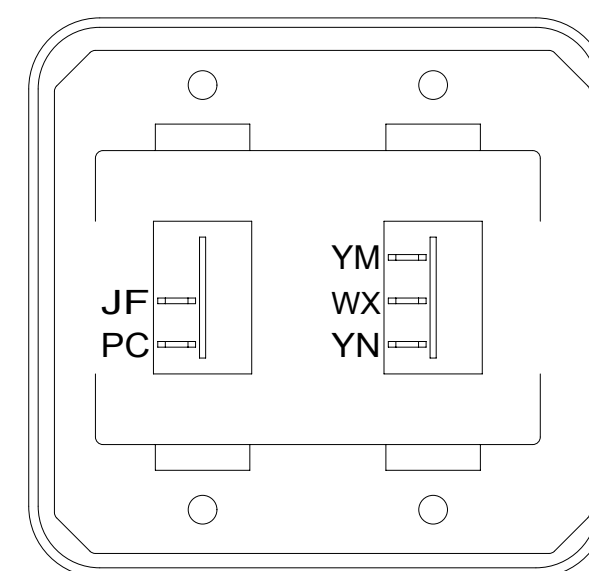


- 1JM HOME THEATER SOUND SYSTEM
- 571 RADIO SPEAKERS
- 1DG EXT ENTERTAIN CTR W/TV & CD
- 265 CODES/STANDARDS-CSA/CMVSS
- 1B1 CODES/STANDARDS USA

FOR ELECTRICAL TORQUE SPECIFICATIONS SEE DWG NO. 128783-01-000

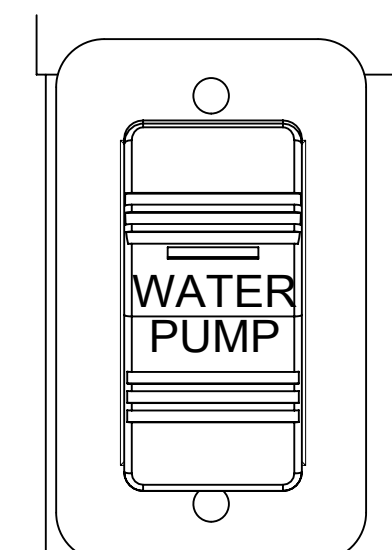
FOR ELECTRICAL CALLOUTS SEE DWG NO. 121339-01-000

DESCRIPTION:		WIRING INSTL-BODY, 12V	
SHEET:	ITEM/PART NO.:	REV:	
3 OF 7	000200507 / 30033501000		



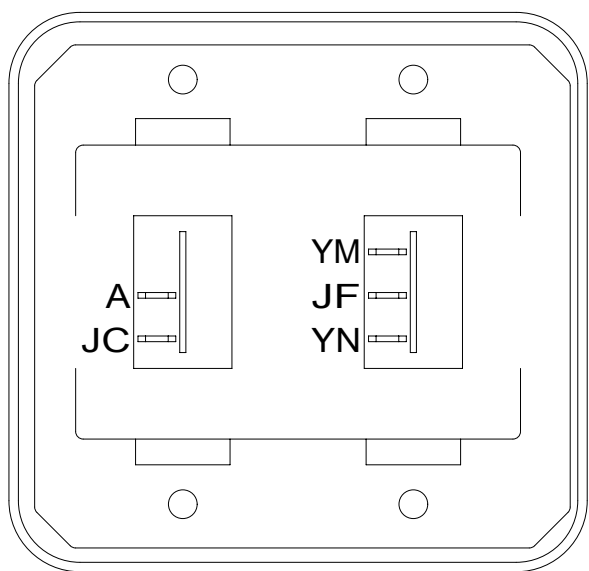
SWITCH-ROCKER
135740-01-CHT
135740-02-CHT
SWITCH-BASE
135741-02-CHT
SWITCH-BEZEL
135742-02-CHT
SCREW
G11-08-08U (4)

DETAIL DA



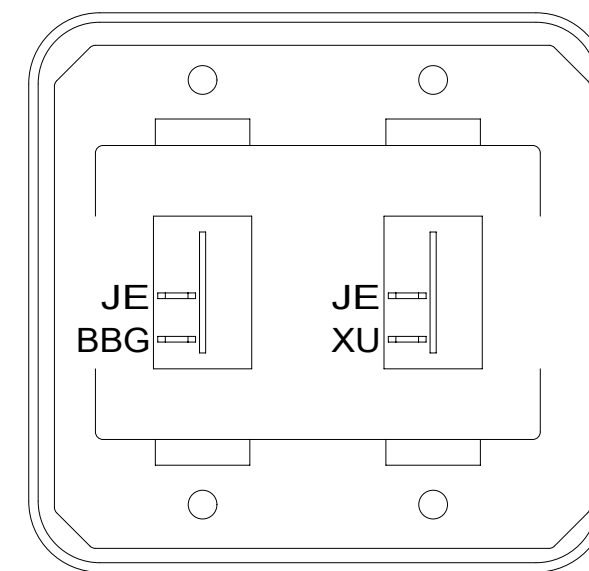
SWITCH-PUMP
108357-21-000
ACTUATOR
108356-23-CHT
PLATE
98351-07-CHT
SCREW
G11-06-10U (2)

DETAIL DF



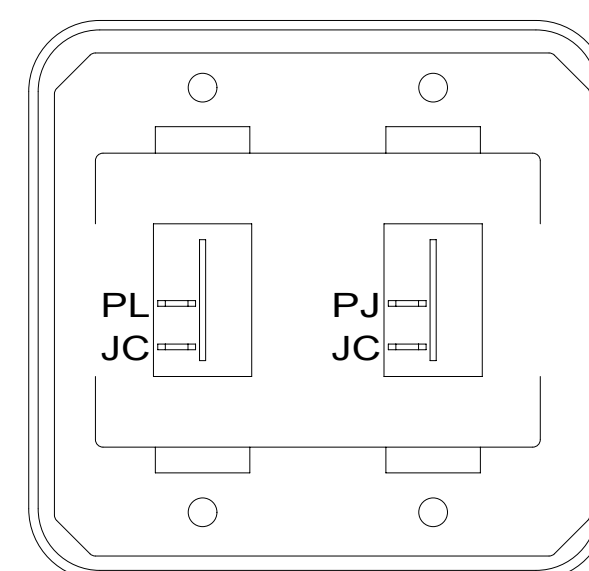
SWITCH-ROCKER
135740-01-CHT
135740-02-CHT
SWITCH-BASE
135741-02-CHT
SWITCH-BEZEL
135742-02-CHT
SCREW
G11-08-08U (4)

DETAIL DG



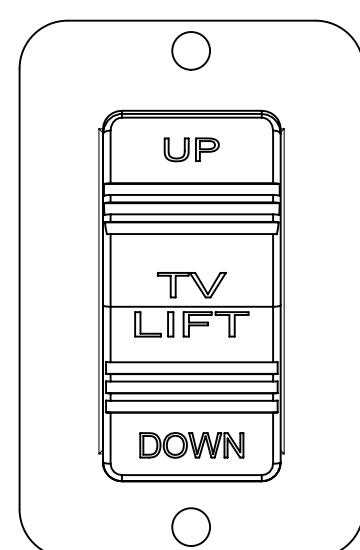
SWITCH-ROCKER
135740-01-CHT (2)
SWITCH-BASE
135741-02-CHT
SWITCH-BEZEL
135742-02-CHT
SCREW
G11-08-08U (4)

DETAIL DB



SWITCH-ROCKER
135740-01-CHT (2)
SWITCH-BASE
135741-02-CHT
SWITCH-BEZEL
135742-02-CHT
SCREW
G11-08-08U (4)

DETAIL DC



SWITCH-TV-LIFT
108357-16-000
ACTUATOR
108356-26-CHT
PLATE
98351-07-CHT
SCREW
G11-06-10U (2)

DETAIL DD (2 PLACES)

PLATE-SWITCH
158431-23-CHT
SCREW
G11-06-10U (6)

SWITCH-COMT LIGHTS
108357-01-000
ACTUATOR-SWITCH
108356-14-CHT
CIRCUITS WC,NW

SWITCH-COACH BATT
108357-18-000
ACTUATOR-SWITCH
108356-19-CHT
CIRCUITS KF,LJ,LG,
LH,WC
WIRE ASM-THERM
186796-01-000

SWITCH-AWNING
108357-06-000
ACTUATOR-SWITCH
108356-12-CHT
CIRCUITS
FFD,FFR,FFE,
FFE,JJR,FFD

SWITCH-AWNING
108357-14-000
ACTUATOR-SWITCH
108356-28-CHT
CIRCUITS
WC,WE,ZZK

SWITCH-AUTO LEVEL
108357-18-000
ACTUATOR-SWITCH
108356-15-CHT
CIRCUITS SSD,SSE,
,SSC,SSE,SSF

SWITCH-STEP
108357-19-000
CIRCUITS ER,ES

SWITCH-CHASSIS BATTERY
108357-18-000
ACTUATOR-SWITCH
108356-20-CHT
CIRCUITS TTY,TTZ,MK,
UUB,UUC
WIRE ASM-THERM
186796-01-000

DETAIL DH 1

SWITCH-CONTROL,LOFTBED,TOUCH
189056-01-000
WIRE ASM-LOFTBED SWITCH
190197-01-000
SCREW
076790-05-000 (2)

45B

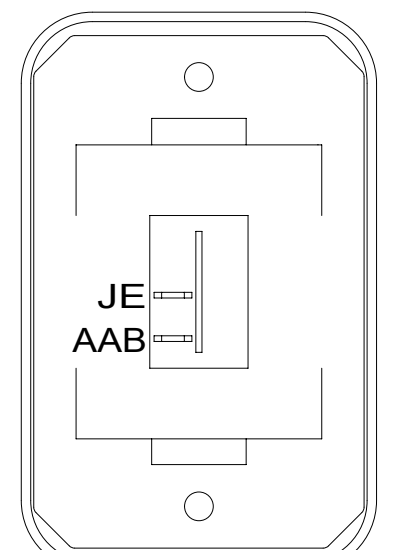
LABEL-SLIDEOUT, DRIVER,FRONT
163992-01-CHT

LABEL-SLIDEOUT, PASS,REAR
163992-03-CHT

SWITCH
108357-18-000
ACTUATOR
108356-31-CHT
(HHH,KE,HHG)

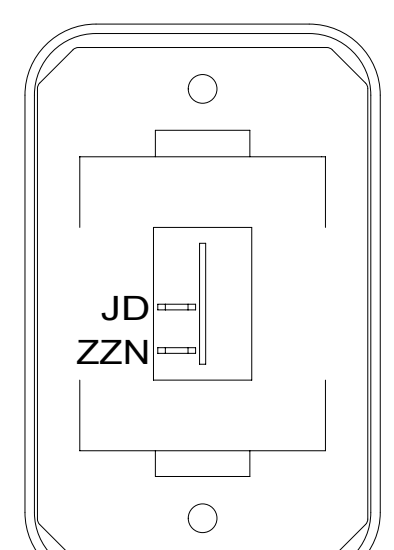
SWITCH
108357-18-000
ACTUATOR
108356-31-CHT
(DR,KE,DU)

DETAIL DN



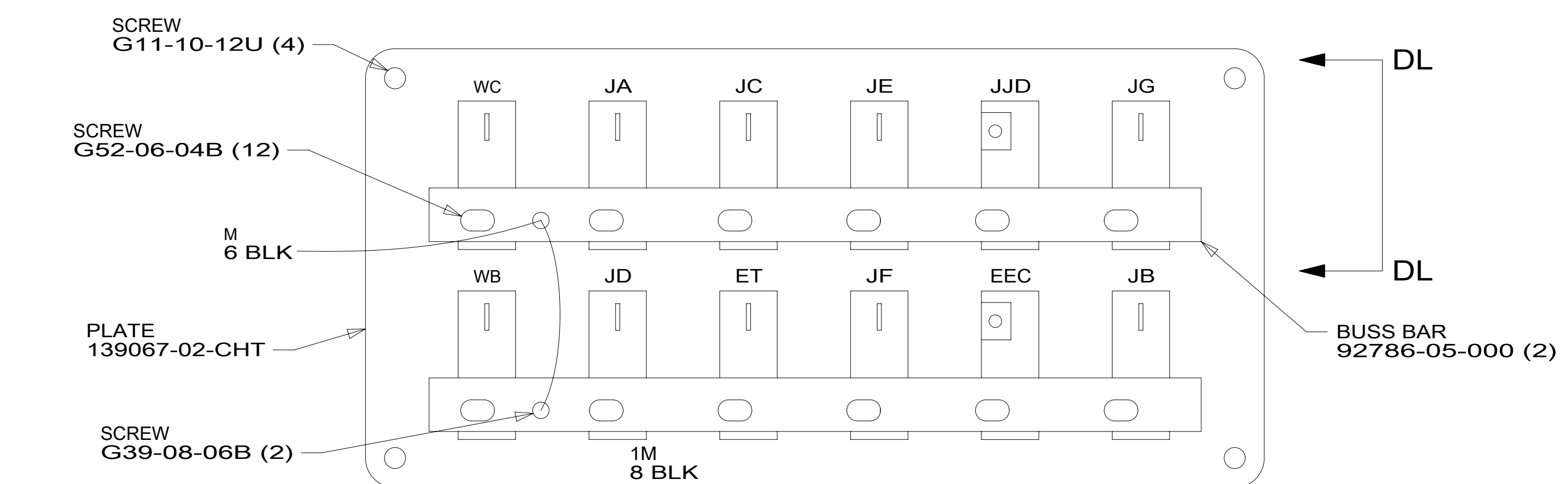
SWITCH-ROCKER
135740-01-CHT
SWITCH-BASE
135741-01-CHT
SWITCH-BEZEL
135742-01-CHT
SCREW
G11-08-08U (2)

DETAIL DE



SWITCH-ROCKER
135740-01-CHT
SWITCH-BASE
135741-01-CHT
SWITCH-BEZEL
135742-01-CHT
SCREW
G11-08-08U (2)

DETAIL DS



DETAIL DK (BACK VIEW)

SCREW
G11-10-12U (4)

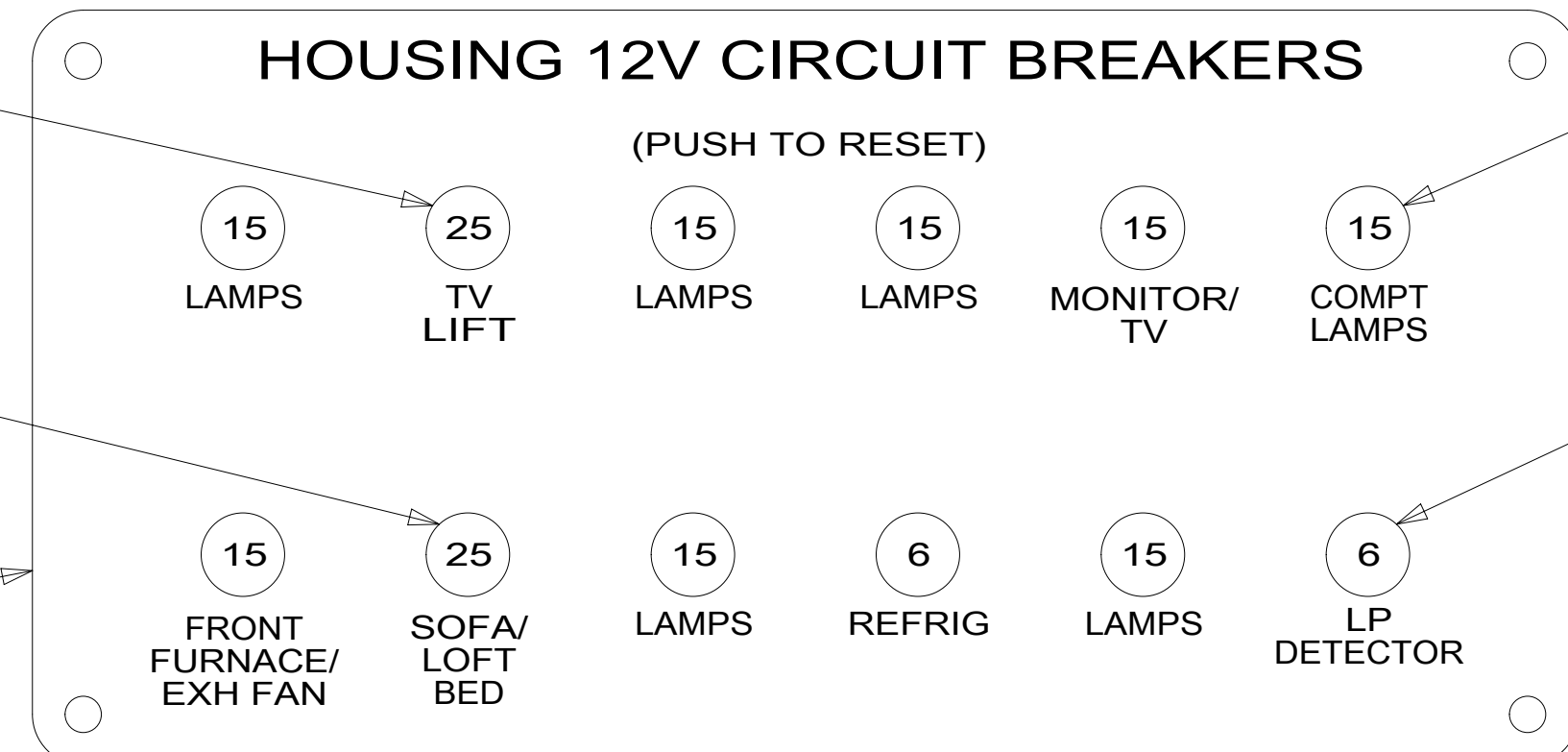
SCREW
G52-06-04B (12)

M
6 BLK

PLATE
139067-02-CHT

SCREW
G39-08-06B (2)

CIRCUIT BREAKER
93655-01-000
SCREW
G52-06-04B
WASHER
OME02B



DETAIL DK (FRONT VIEW)

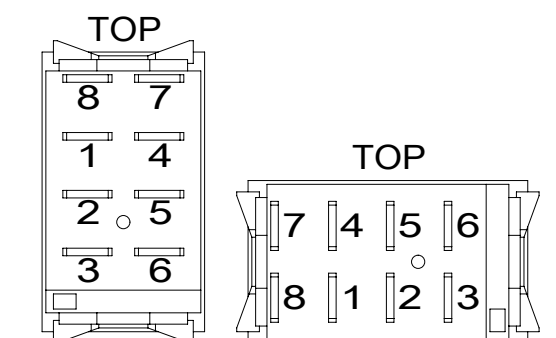
41Z
41H

CIRCUIT BREAKER
93655-01-000
SCREW
G52-06-04B
WASHER
OME02B

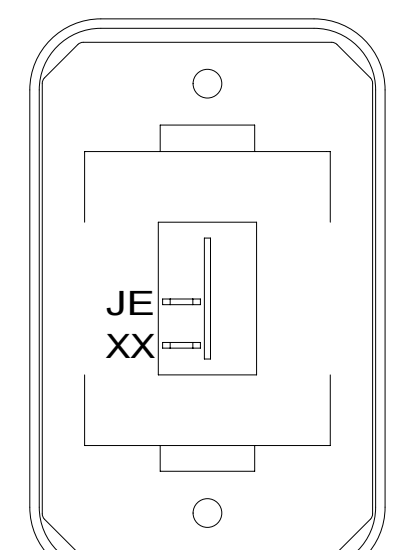
LABEL
92547-17-000

CIRCUIT BREAKER
93654-02-000 (8)

CIRCUIT BREAKER
93654-01-000 (2)

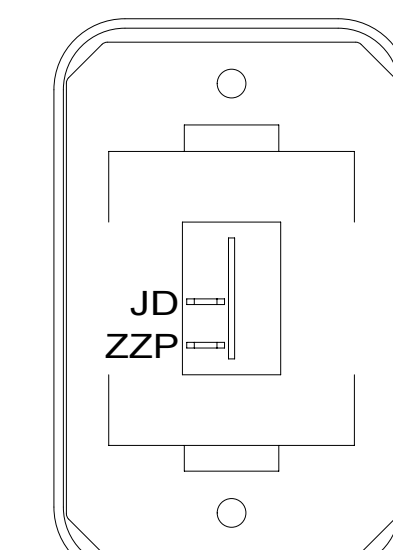


DETAIL DJ



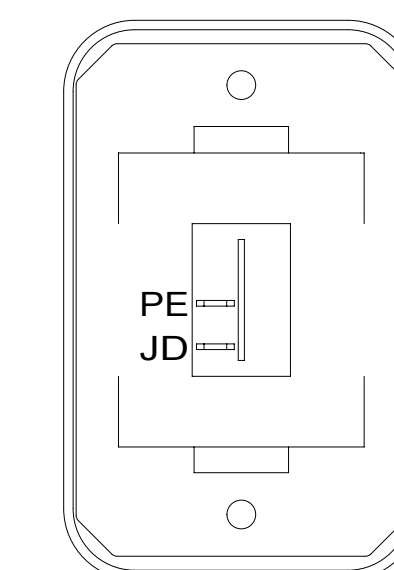
SWITCH-ROCKER
135740-01-CHT
SWITCH-BASE
135741-01-CHT
SWITCH-BEZEL
135742-01-CHT
SCREW
G11-08-08U (2)

DETAIL DT



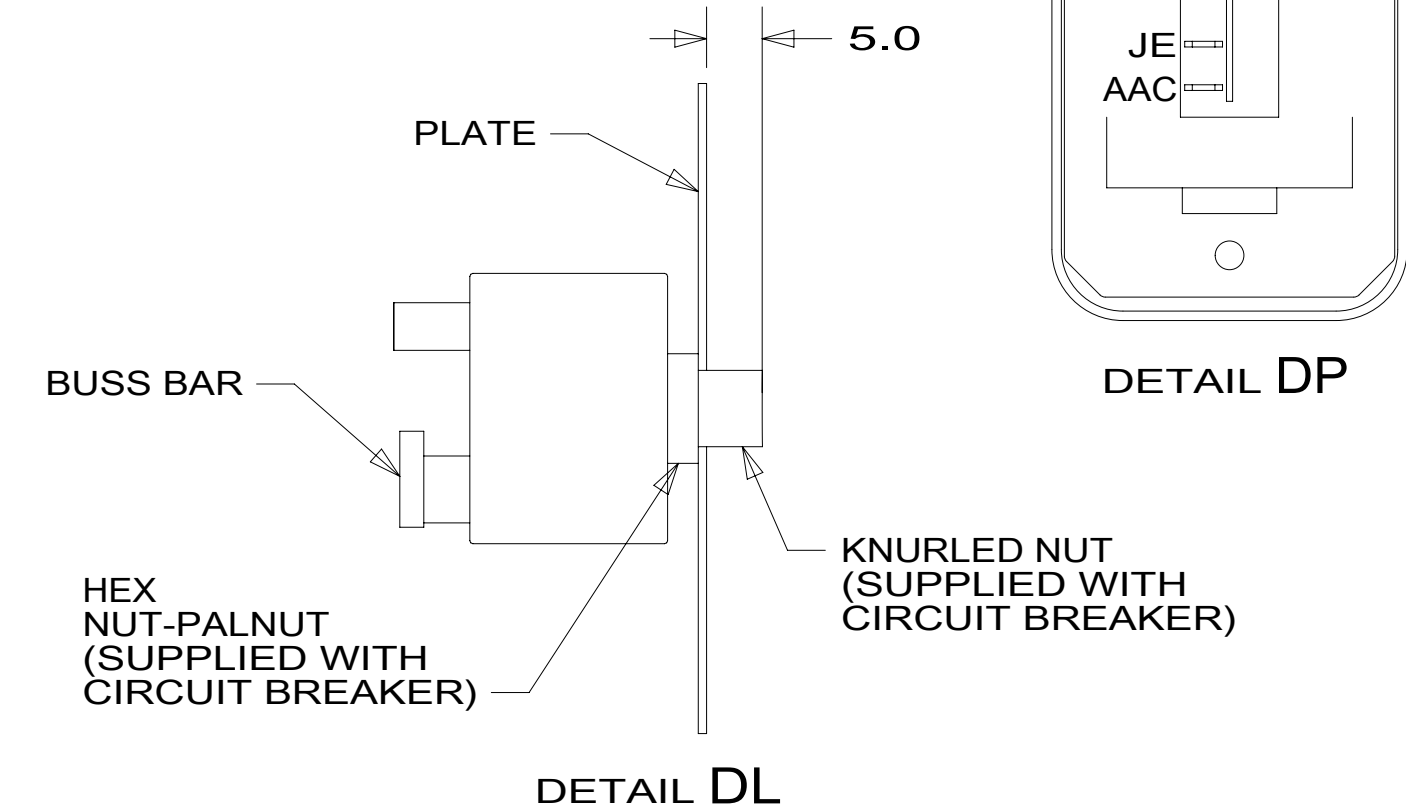
SWITCH-ROCKER
135740-01-CHT
SWITCH-BASE
135741-01-CHT
SWITCH-BEZEL
135742-01-CHT
SCREW
G11-08-08U (2)

DETAIL DR

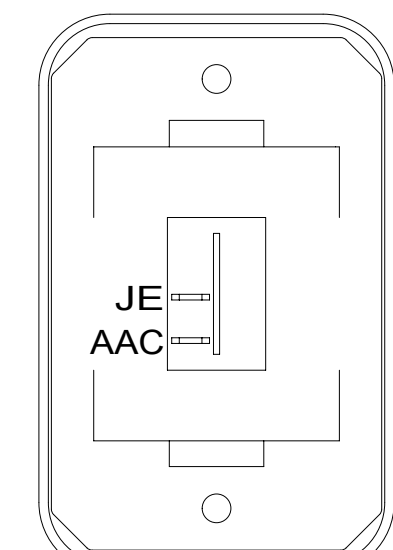


SWITCH-ROCKER
135740-01-CHT
SWITCH-BASE
135741-01-CHT
SWITCH-BEZEL
135742-01-CHT
SCREW
G11-08-08U (2)

DETAIL DM



DETAIL DL



SWITCH-ROCKER
135740-01-CHT
SWITCH-BASE
135741-01-CHT
SWITCH-BEZEL
135742-01-CHT
SCREW
G11-08-08U (2)

DETAIL DP

LABEL-SLIDEOUT,PASS,FRONT
163992-04-CHT

SLIDEOUT-ELEC,FRONT
171341-01-000
SCREW
76790-05-000 (2)

SWITCH
108357-06-000
ACTUATOR
108356-25-CHT
PPP,PPV,PPN,
PPN,PPU,PPP.

CONNECT TO 12-PIN
HOUSING WITH CIRCUITS
SSN,NNP,NNR,NNN,
HHE,HHF,WWW,WWP.

LABEL-WARNING,SLIDEOUT
116549-01-000

WARNING CRUSH HAZARD: Keep people and objects clear of the inside and the outside of the sidoloo room when operating. Failure to comply could result in death or serious injury.

NOTES: 1 FOR SWITCH ORIENTATION SEE DETAIL DJ.

FOR ELECTRICAL TORQUE SPECIFICATIONS SEE DWG NO. 128783-01-000

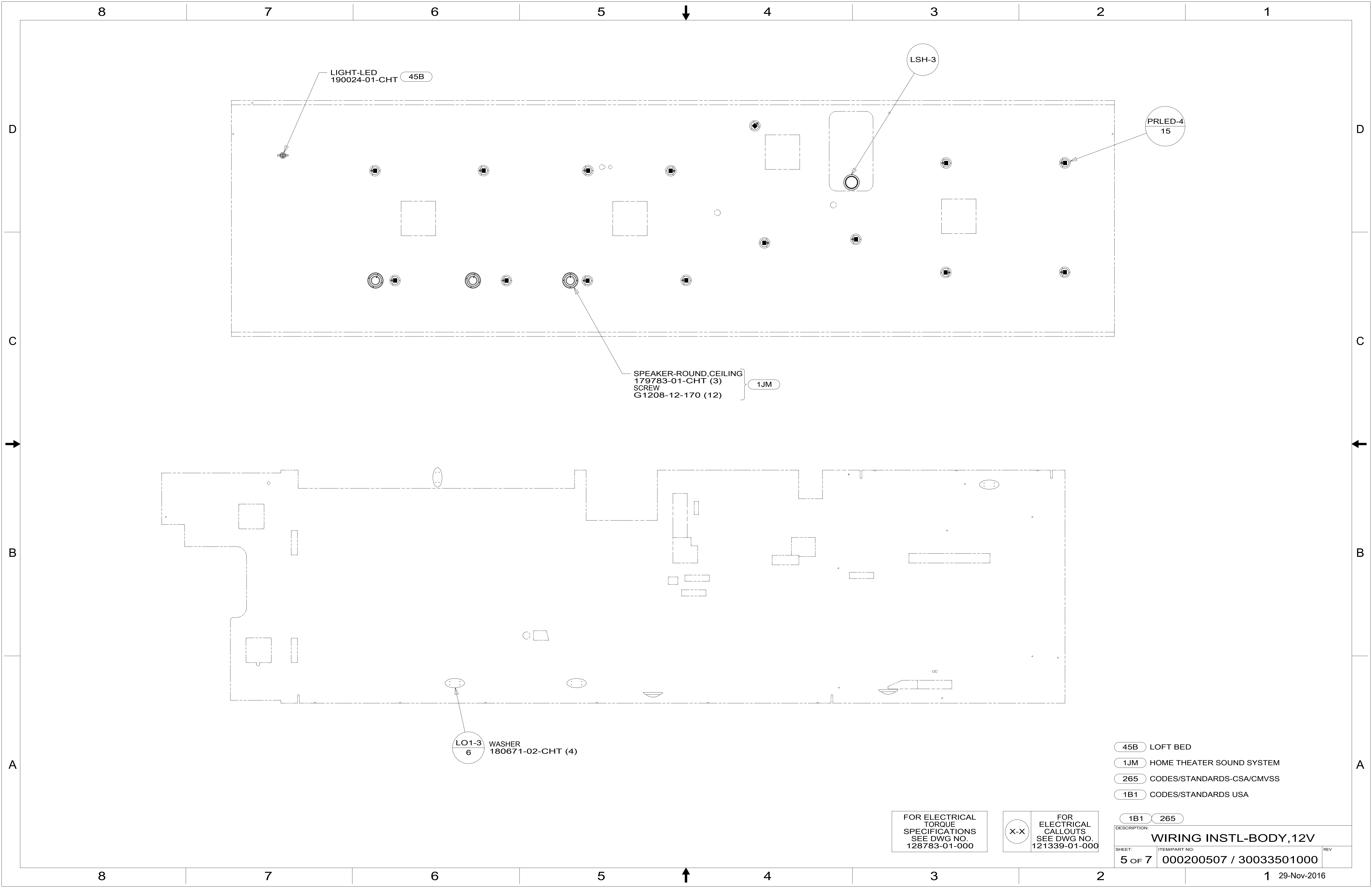
FOR ELECTRICAL CALLOUTS SEE DWG NO. 121339-01-000

- 45B LOFT BED
- 41Z RESTEASY DUAL CTL ULTRALE RH
- 41H REST EASY, ULTRALEATHER
- 265 CODES/STANDARDS-CSA/CMVSS
- 1B1 CODES/STANDARDS USA

1B1 265

DESCRIPTION:
WIRING INSTL-BODY, 12V

SHEET: 4 OF 7 ITEM/PART NO: 000200507 / 30033501000 REV



LIGHT-LED
190024-01-CHT (45B)

LSH-3

PRLED-4
15

SPEAKER-ROUND, CEILING
179783-01-CHT (3)
SCREW
G1208-12-170 (12) (1JM)

LO1-3
6 WASHER
180671-02-CHT (4)

- 45B LOFT BED
- 1JM HOME THEATER SOUND SYSTEM
- 265 CODES/STANDARDS-CSA/CMVSS
- 1B1 CODES/STANDARDS USA

FOR ELECTRICAL
TORQUE
SPECIFICATIONS
SEE DWG NO.
128783-01-000

FOR
ELECTRICAL
CALLOUTS
SEE DWG NO.
121339-01-000

DESCRIPTION:	
WIRING INSTL-BODY, 12V	
SHEET:	ITEM/PART NO. REV
5 OF 7	000200507 / 30033501000

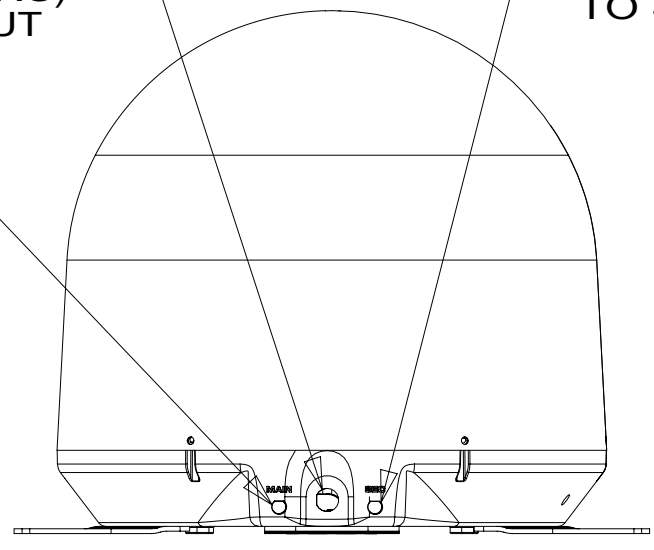
8 7 6 5 4 3 2 1

CONNECT 2-PIN HOUSING FROM ROOF ASM TO SATELLITE DISH HERE AND ADD CONVOLUTED TUBING

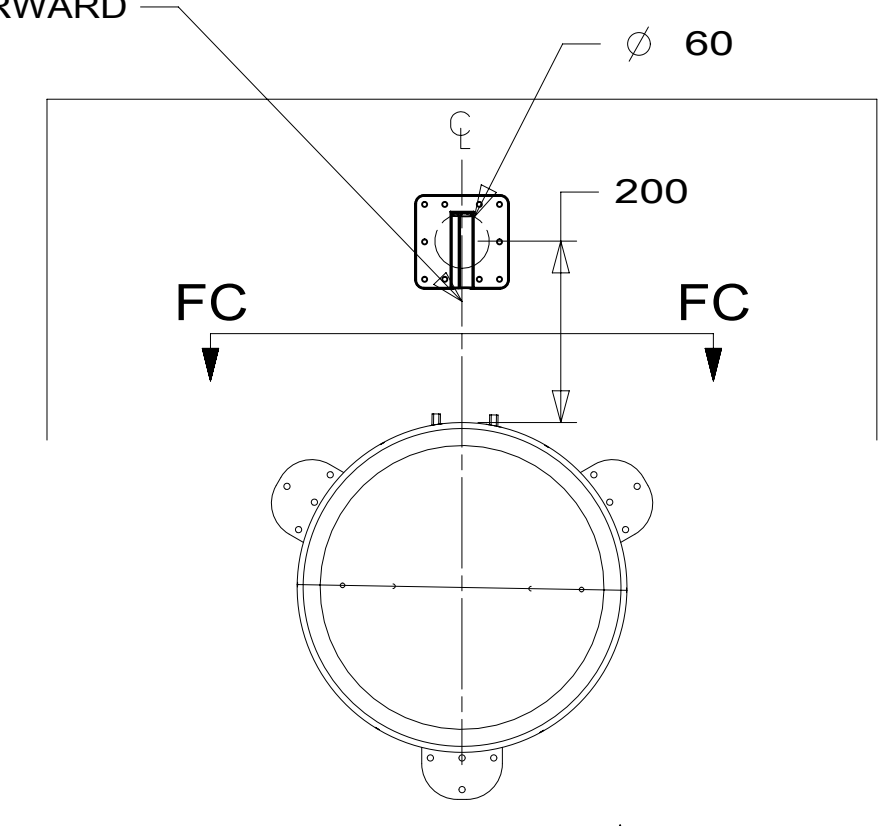
CONNECT CABLE ASM COAX (ORG) FROM ROOF ASM TO MAIN INPUT ON SATELLITE DISH

CONNECT CABLE ASM COAX (ORG-2) FROM ROOF ASM TO SEC INPUT ON SATELLITE DISH

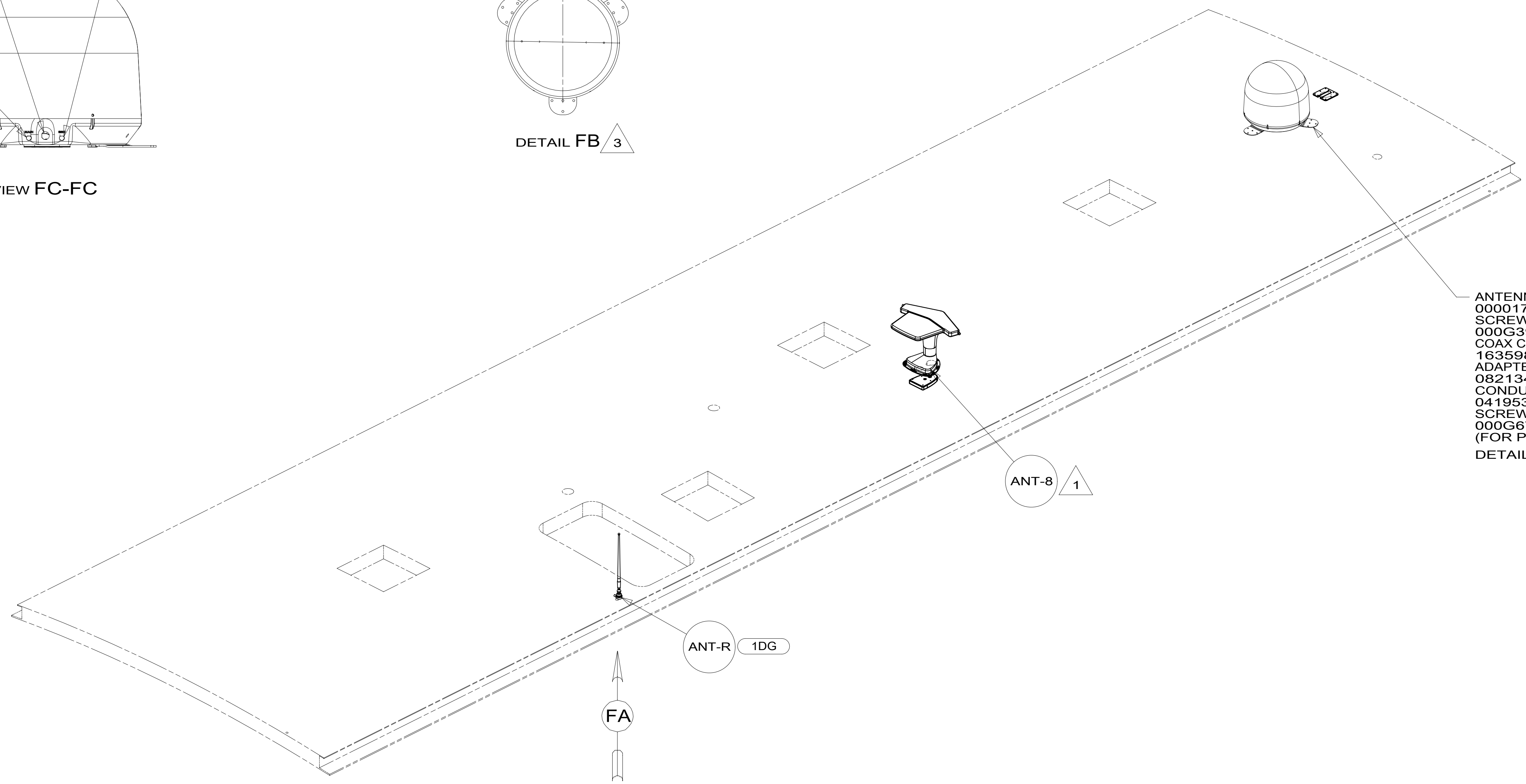
THE SATELLITE DISH WIRE CONNECTIONS ARE TO BE PLACED ON THE CENTERLINE OF THE MOTORHOME FACING FORWARD



VIEW FC-FC



DETAIL FB 3



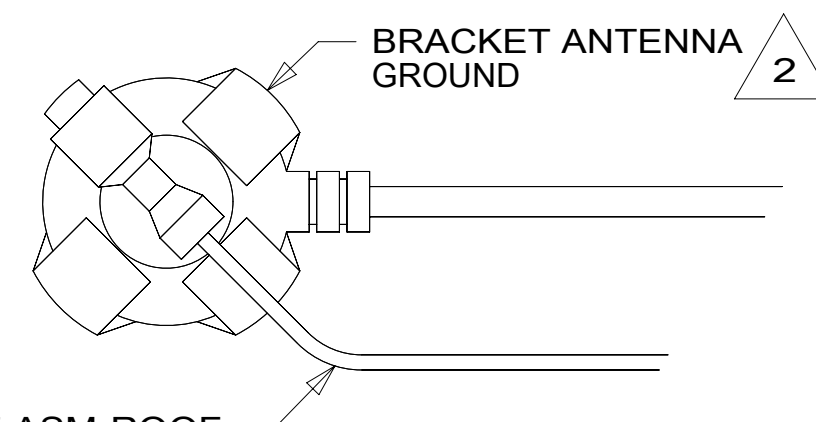
ANTENNA-SATELLITE, STATIONARY
00017113 / 313336-01-CHT
SCREW-SF/DR-8-18X1/2 PPH
000G39-08-08U (9)
COAX CABLE
163598-04-000 (2)
ADAPTER-CABLE TO CABLE
082134-01-000 (2)
CONDUIT-CONVOLUTE, SLIT .375
041953-06-000 (200 MM)
SCREW-10-12X.75 PPH
000G67-10-12U (10)
(FOR PLATE SUPPLIED W/ DISH)
DETAIL FB

78K

ANT-8 1

ANT-R 1DG

FA



VIEW FA

JP FROM WIRE ASM-ROOF

BRACKET ANTENNA GROUND 2

- NOTES:
- 3 SEE MANUFACTURER'S INSTALLATION FOR ADDITIONAL INFORMATION.
 - 2 WRAP LEGS AROUND ANTENNA BASE.
 - 1 SEE ANTENNA INSTALLATION MANUAL FOR CORRECT INSTALLATION PROCEDURE.

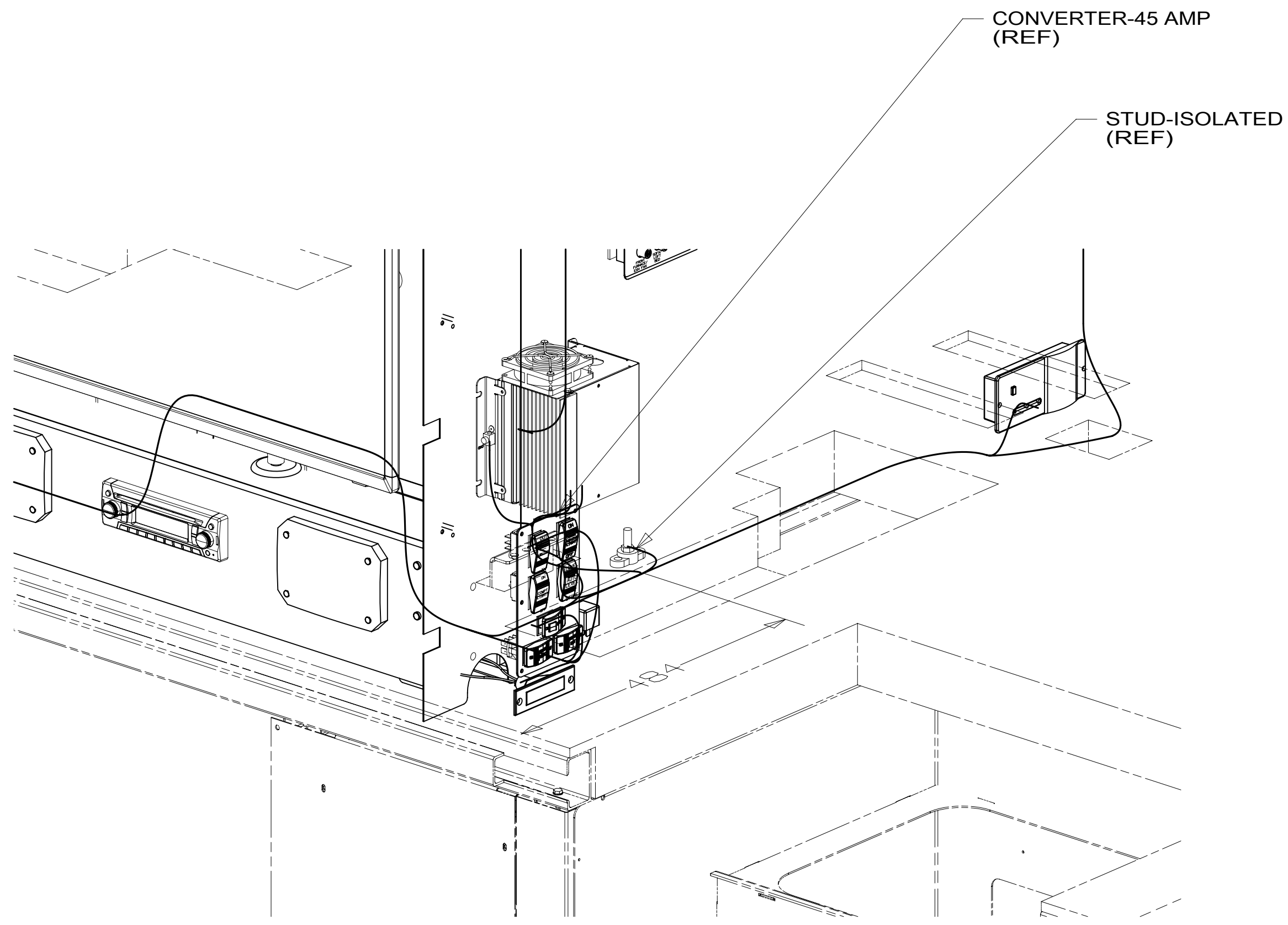
FOR ELECTRICAL TORQUE SPECIFICATIONS SEE DWG NO. 128783-01-000

FOR ELECTRICAL CALLOUTS SEE DWG NO. 121339-01-000

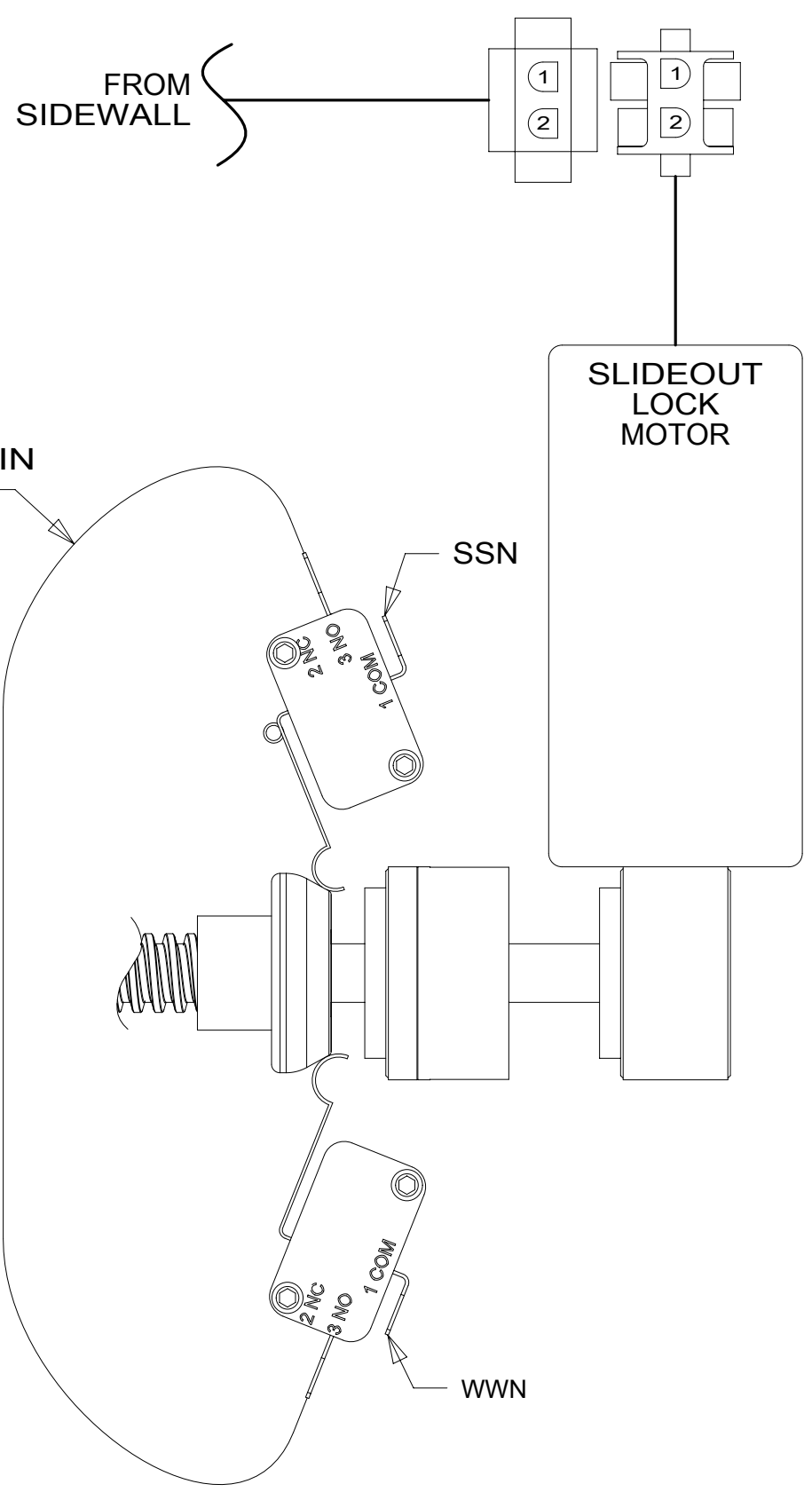
- 78K SATELLITE TV SYSTEM AUTO
- 1DG EXT ENTERTAIN CTR W/TV & CD
- 265 CODES/STANDARDS-CSA/CMVSS
- 1B1 CODES/STANDARDS USA

DESCRIPTION: WIRING INSTL-BODY, 12V	
SHEET: 6 OF 7	ITEM/PART NO: 000200507 / 30033501000
REV 1 29-Nov-2016	

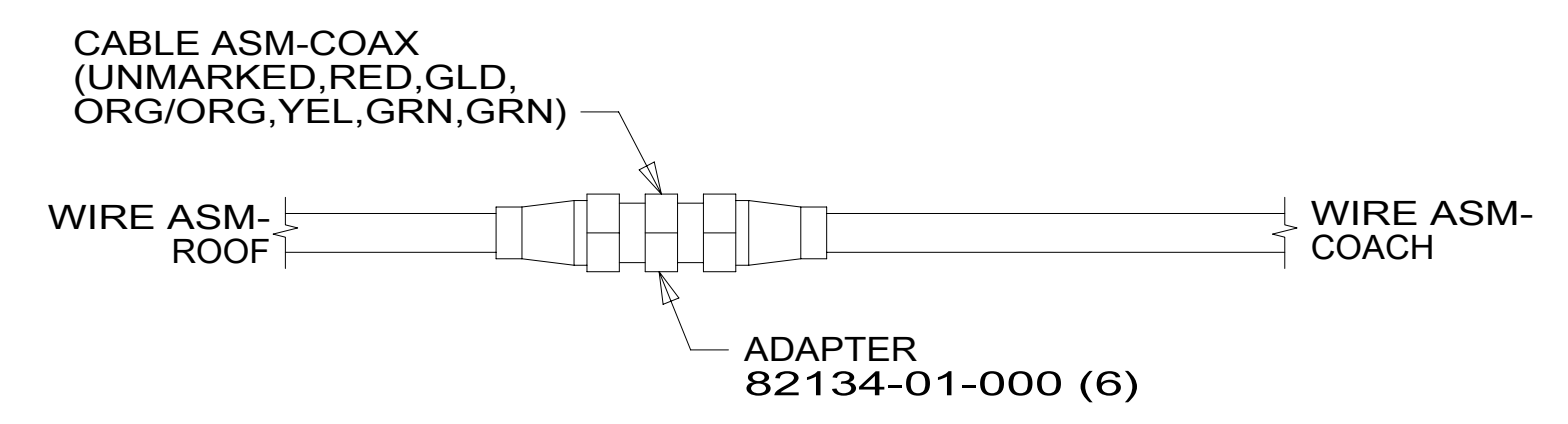
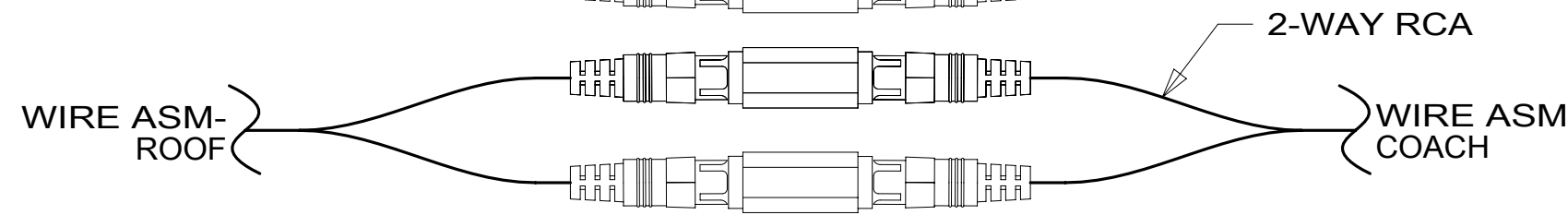
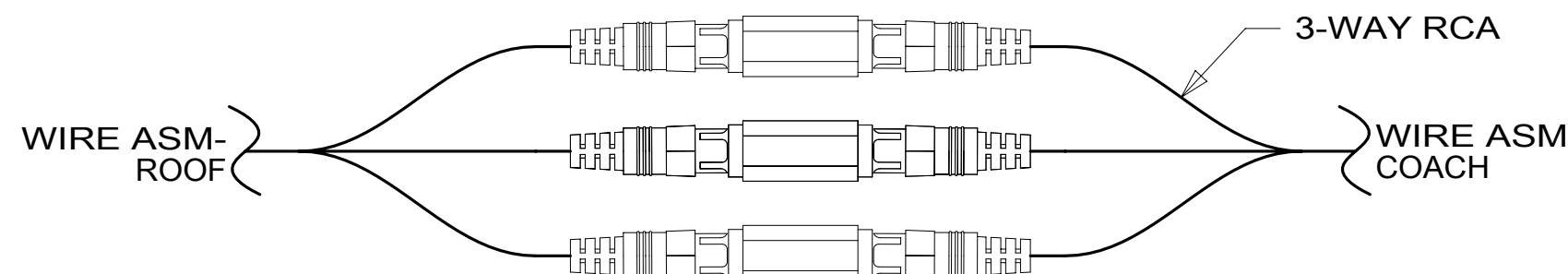
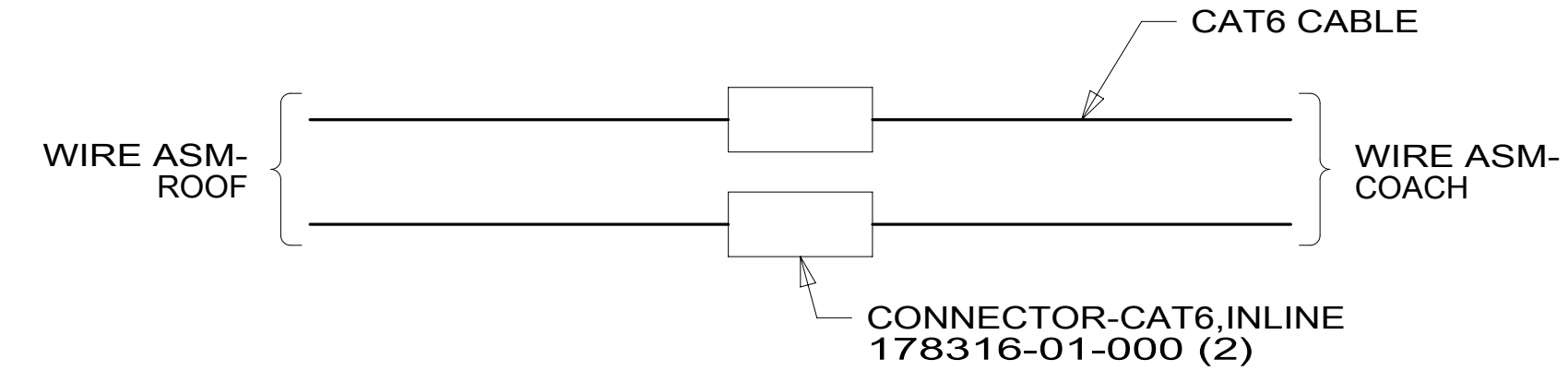
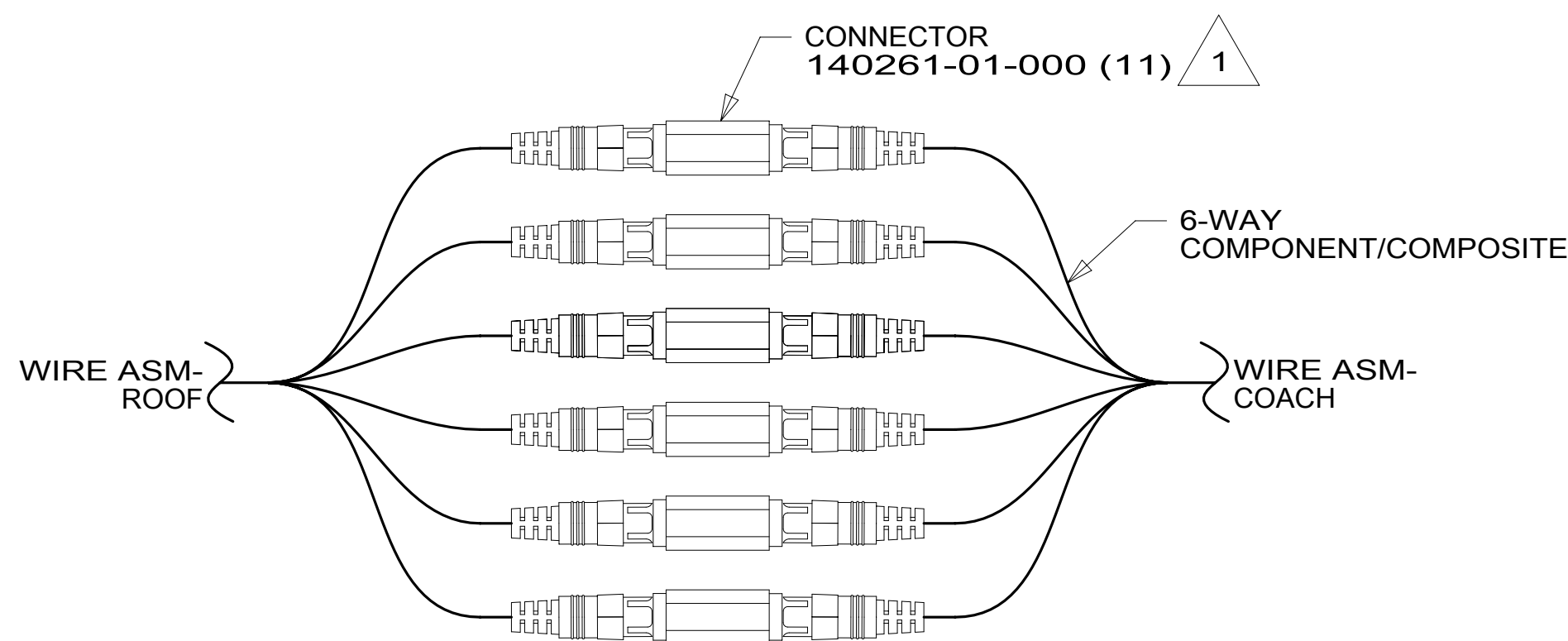
8 7 6 5 4 3 2 1



VIEW GB



DETAIL GC (FRT RIGHT)



DETAIL GA

1 WRAP BOTH ENDS WITH TAPE 8363-01-000 TO SECURE CONNECTION.

NOTES:

265 CODES/STANDARDS-CSA/CMVSS

1B1 CODES/STANDARDS USA

1B1 265

FOR ELECTRICAL TORQUE SPECIFICATIONS SEE DWG NO. 128783-01-000

FOR ELECTRICAL CALLOUTS SEE DWG NO. 121339-01-000

DESCRIPTION: WIRING INSTL-BODY, 12V

SHEET: 7 OF 7 ITEM/PART NO: 000200507 / 30033501000 REV