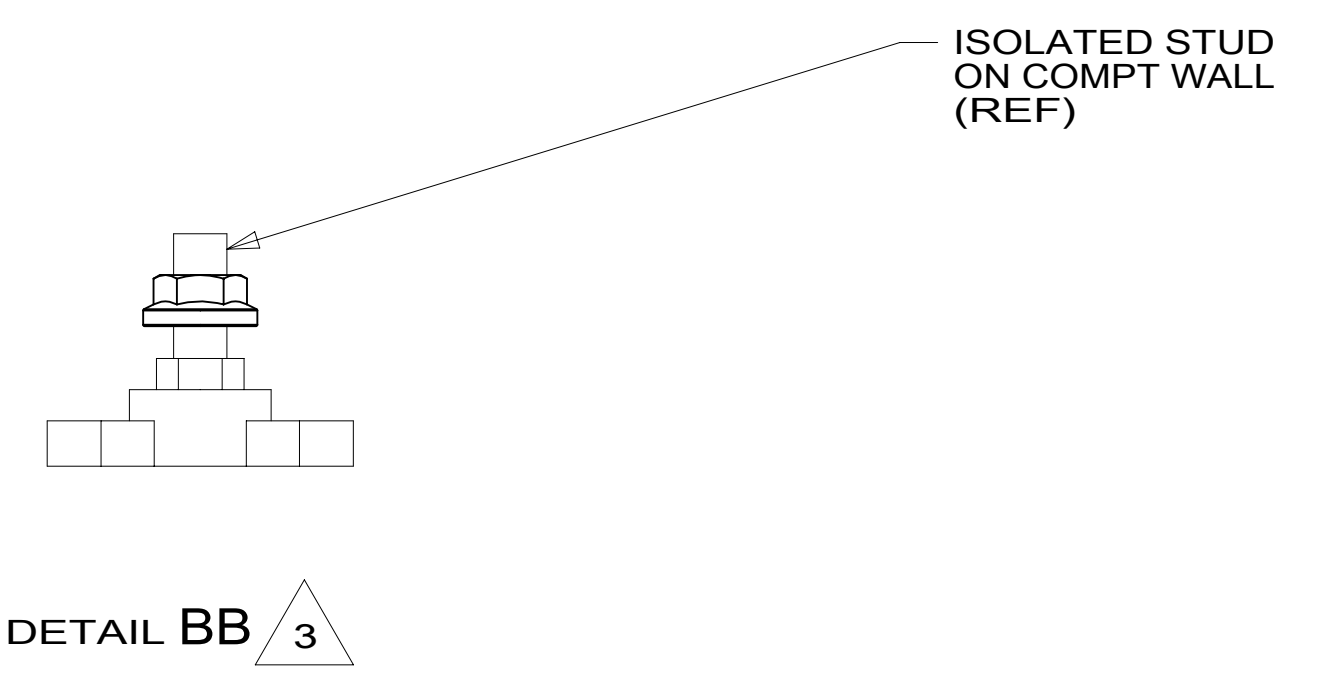
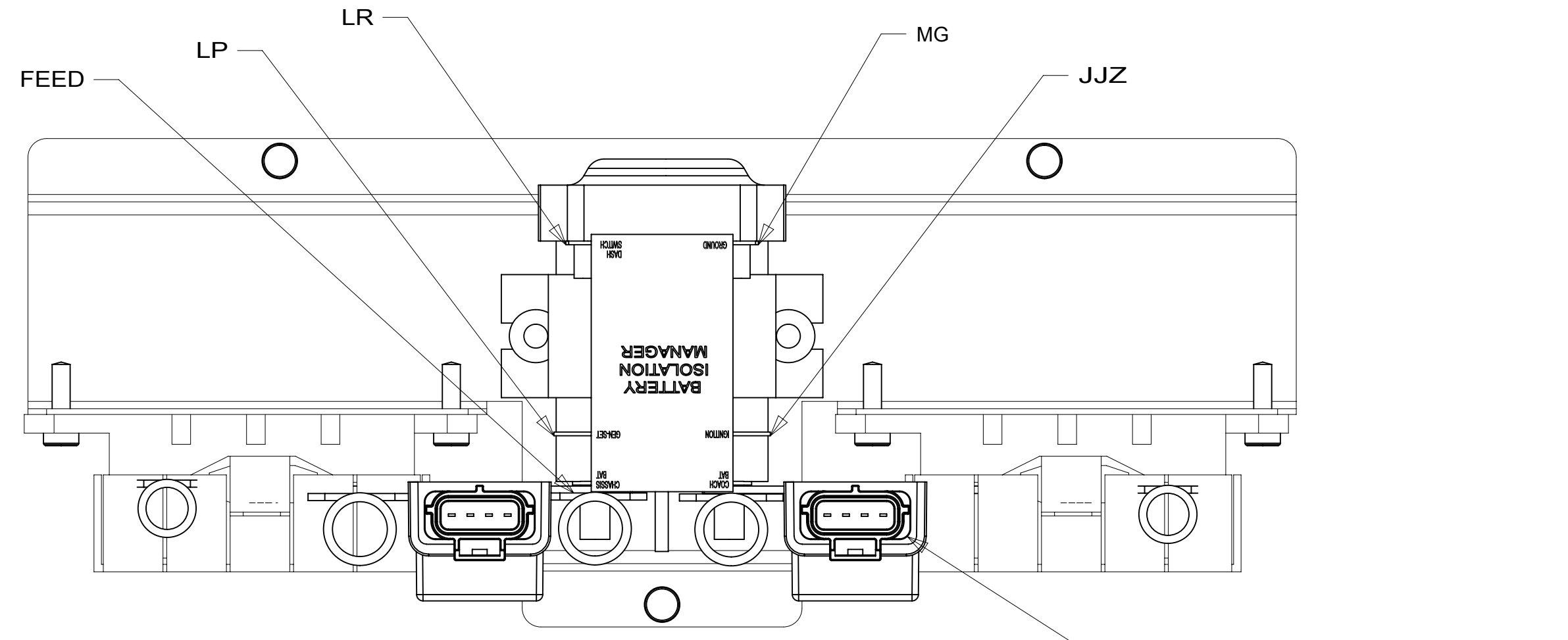


DETAIL BA



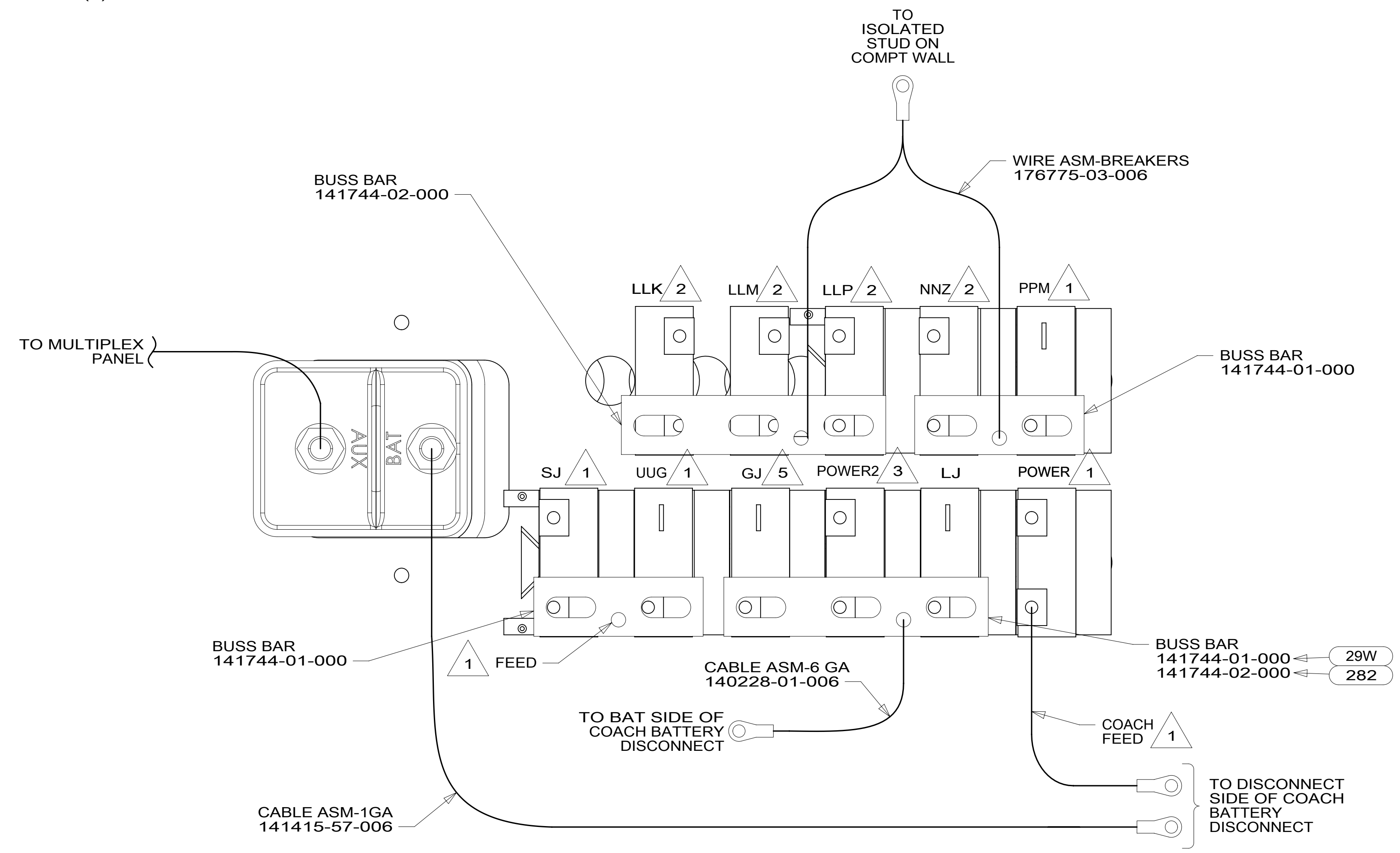
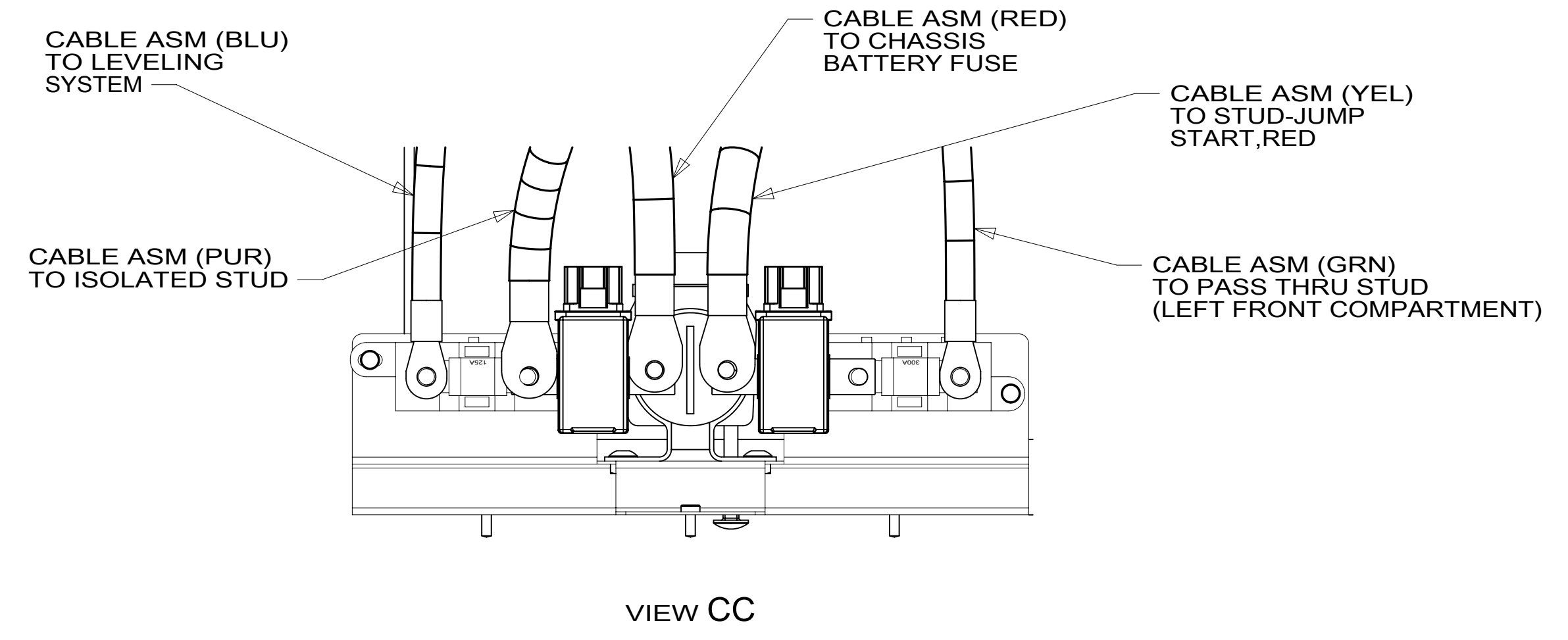
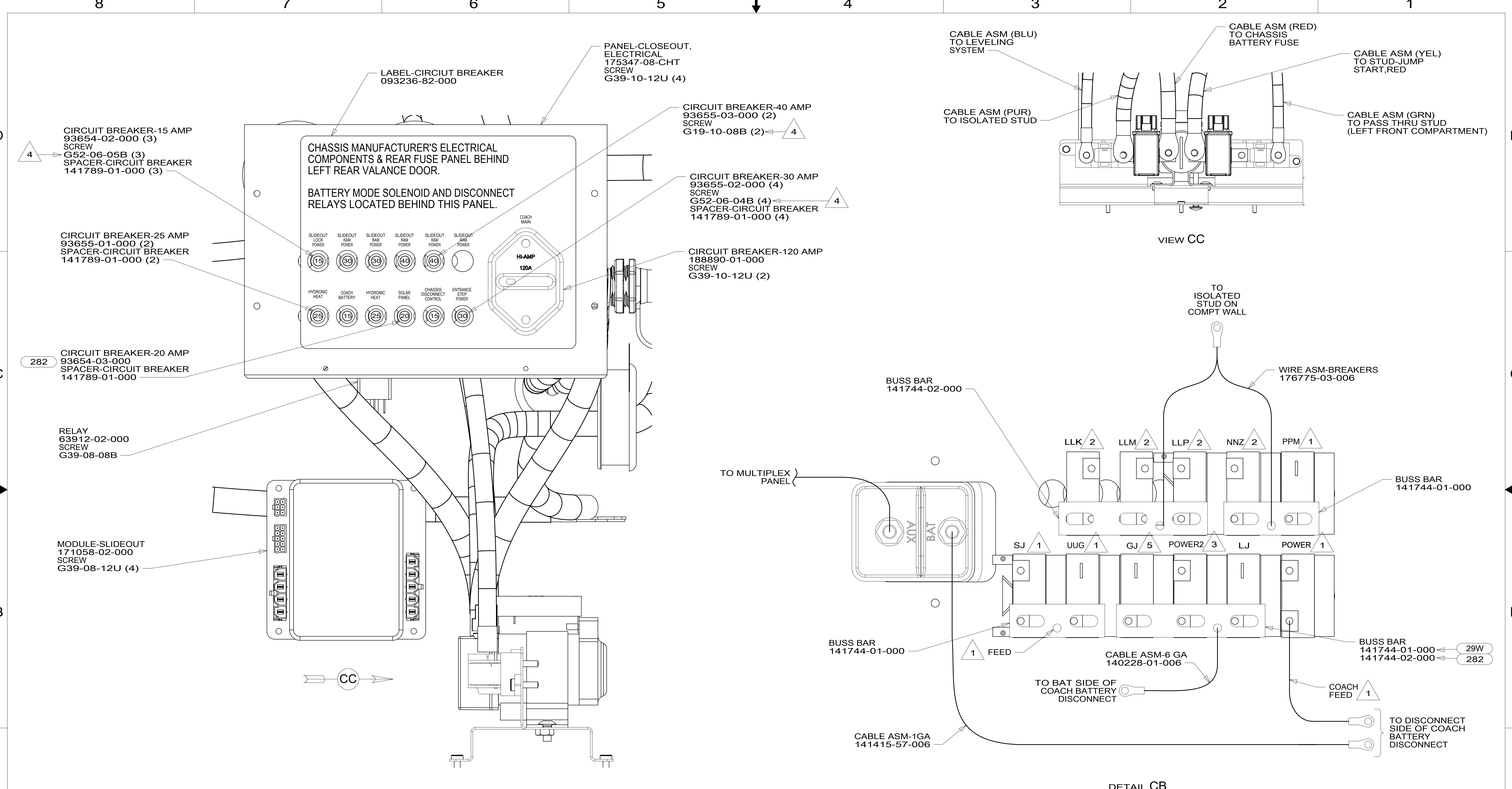
- NOTES:
- (4) SEE WIRE ASM-CHASSIS FOR ADDITIONAL INFORMATION.
 - (3) SEE BATTERY INSTL FOR ADDITIONAL INFORMATION.
 - (2) SEE WIRING INSTL-FRONT END FOR ADDITIONAL INFORMATION.
 - (1) USE PLUG-PLASTIC 61420-12-000 FOR UNUSED HOLE & SEAL.

- (1A6) SEATS-DRIVER/PASSENGER
- (265) CODES/STANDARDS-CSA/CMVSS
- (1B1) CODES/STANDARDS USA

FOR ELECTRICAL
TORQUE
SPECIFICATIONS
SEE DWG NO.
128783-01-000

FOR ELECTRICAL
CALLOUTS
SEE DWG NO.
121339-01-000

DESCRIPTION: WIRING INSTL-CHASSIS	
SHEET: 2 OF 3	ITEM/PART NO: 000200455 / 30015501000
REV 1 20-Sep-2016	



DETAIL CA

DETAIL CB

- NOTES:
- 5 FROM WIRE ASM-CHASSIS. TIE BACK TO HARNESS WITH 29W
 - 4 REPLACE EXISTING SCREW TO PROPERLY ATTACH BREAKER TO BUSS BAR.
 - 3 FROM WIRE ASM-CHASSIS. MARKED WITH YELLOW TAPE.
 - 2 FROM WIRE ASM-SLIDEOUT ROOMS.
 - 1 FROM WIRE ASM-CHASSIS.

- 29W SOLAR PANEL/BATTERY CHRGR W/O
- 282 SOLAR PANEL - 100 WATT
- 265 CODES/STANDARDS-CSA/CMVSS
- 1B1 CODES/STANDARDS USA

FOR ELECTRICAL TORQUE SPECIFICATIONS SEE DWG NO. 128783-01-000

X-X FOR ELECTRICAL CALLOUTS SEE DWG NO. 121339-01-000

DESCRIPTION:		1B1	265
WIRING INSTL-CHASSIS			
SHEET:	ITEM/PART NO.:	REV	
3 OF 3	000200455 / 30015501000		