

2 SEE LOAD CENTER/ATS ASM FOR ADDITIONAL INFORMATION.

1. AT MINIMUM ALL WIRES TO BE SUPPORTED AND SECURED PER CODE REQUIREMENTS. USE CLAMP 10495 OR 10497 OR WIRE TIE 8343 OR 108046 AND SCREW G67-XX-XXX OR G56-XX-XXX AS APPROPRIATE FOR INSTALLATION.

NOTES:

FOR ELECTRICAL TORQUE SPECIFICATIONS SEE DWG NO. 128783-01-000

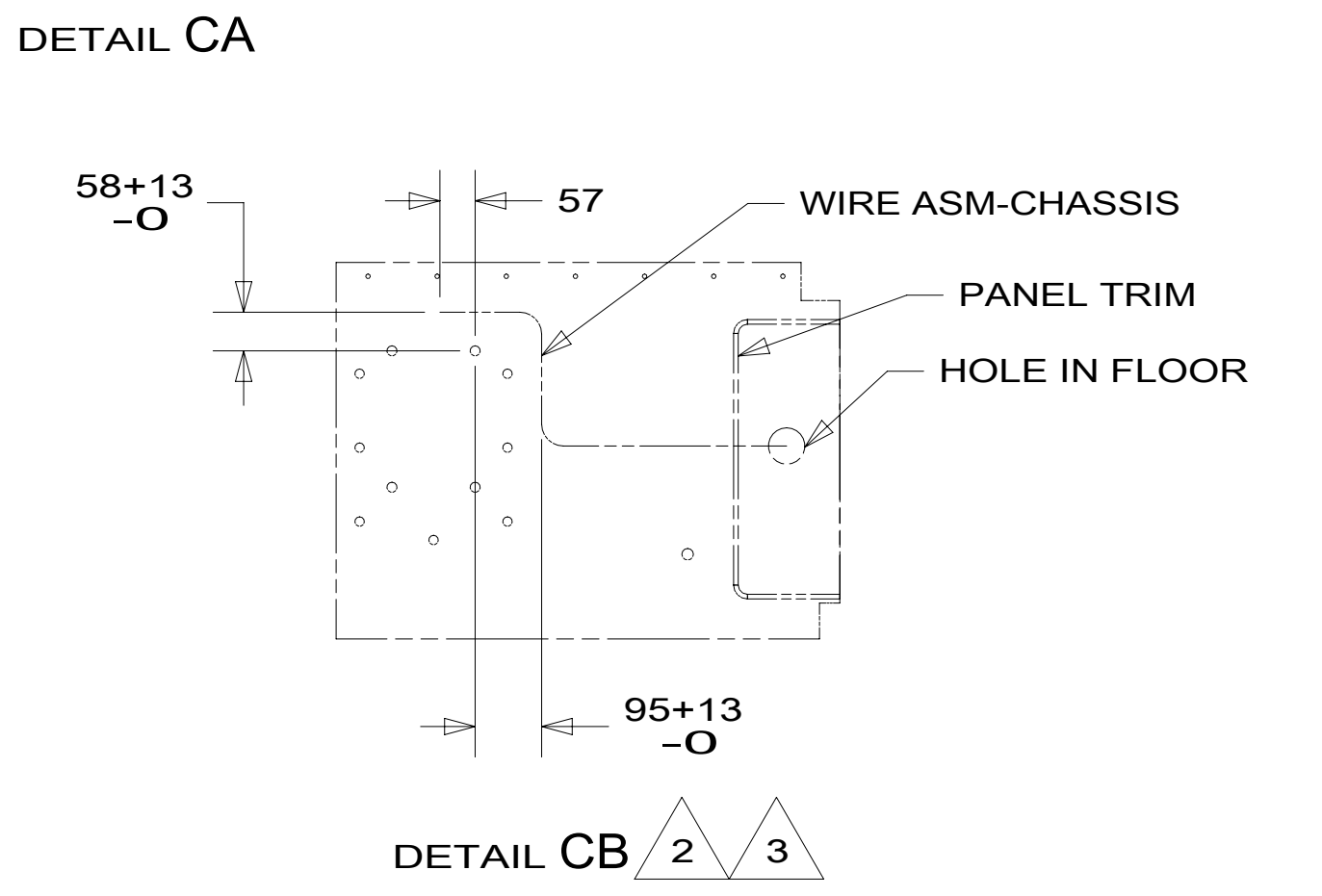
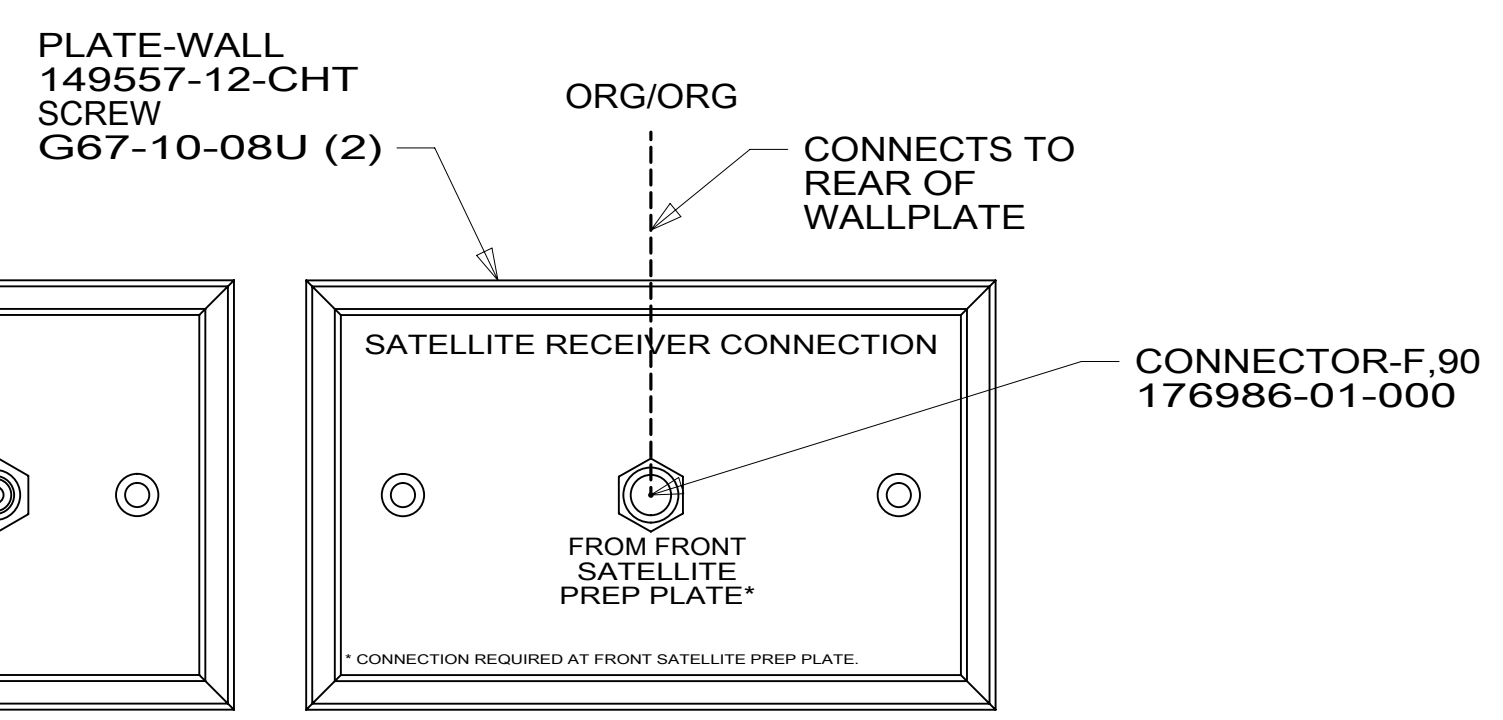
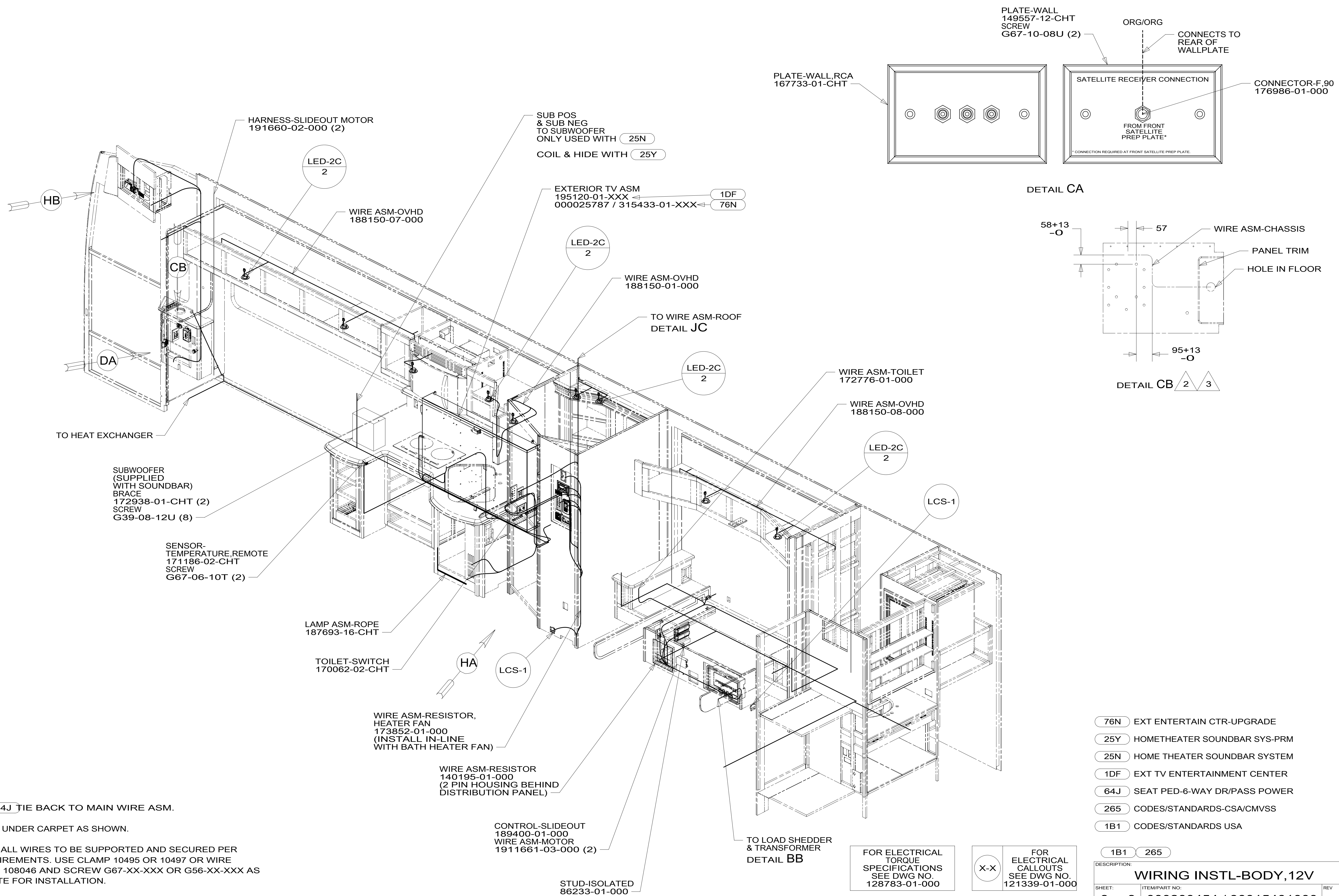
FOR ELECTRICAL CALLOUTS SEE DWG NO. 121339-01-000

- 25N HOME THEATER SOUNDBAR SYSTEM
- 265 CODES/STANDARDS-CSA/CMVSS
- 1B1 CODES/STANDARDS USA

DESCRIPTION:		
WIRING INSTL-BODY, 12V		
SHEET:	ITEM/PART NO.:	REV:
2 OF 9	000200454 / 30015401000	

*300154 *A

8 7 6 5 4 3 2 1



- (76N) EXT ENTERTAIN CTR-UPGRADE
- (25Y) HOMETHEATER SOUNDBAR SYS-PRM
- (25N) HOME THEATER SOUNDBAR SYSTEM
- (1DF) EXT TV ENTERTAINMENT CENTER
- (64J) SEAT PED-6-WAY DR/PASS POWER
- (265) CODES/STANDARDS-CSA/CMVSS
- (1B1) CODES/STANDARDS USA

- 3 WITHOUT (64J) TIE BACK TO MAIN WIRE ASM.
- 2 ROUTE WIRE UNDER CARPET AS SHOWN.

1. AT MINIMUM ALL WIRES TO BE SUPPORTED AND SECURED PER CODE REQUIREMENTS. USE CLAMP 10495 OR 10497 OR WIRE TIE 8343 OR 108046 AND SCREW G67-XX-XXX OR G56-XX-XXX AS APPROPRIATE FOR INSTALLATION.

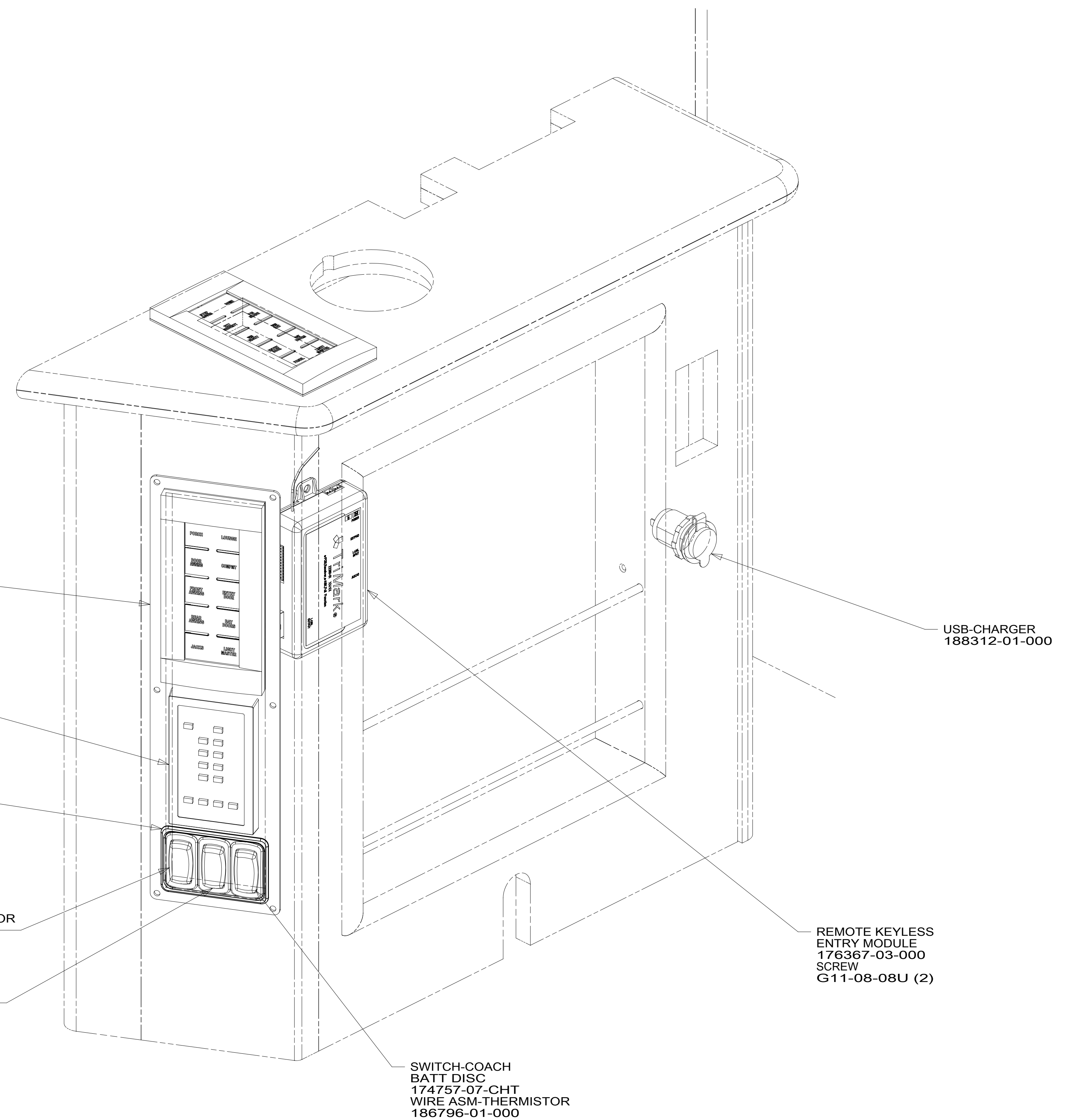
FOR ELECTRICAL TORQUE SPECIFICATIONS SEE DWG NO. 128783-01-000

(X-X) FOR ELECTRICAL CALLOUTS SEE DWG NO. 121339-01-000

DESCRIPTION:		
WIRING INSTL-BODY, 12V		
SHEET:	ITEM/PART NO.:	REV
3 OF 9	000200454 / 30015401000	

*300154 *A

8 7 6 5 4 3 2 1 20-Sep-2016



1. AT MINIMUM ALL WIRES TO BE SUPPORTED AND SECURED PER CODE REQUIREMENTS. USE CLAMP 10495 OR 10497 OR WIRE TIE 8343 OR 108046 AND SCREW G67-XX-XXX OR G56-XX-XXX AS APPROPRIATE FOR INSTALLATION.

NOTES:

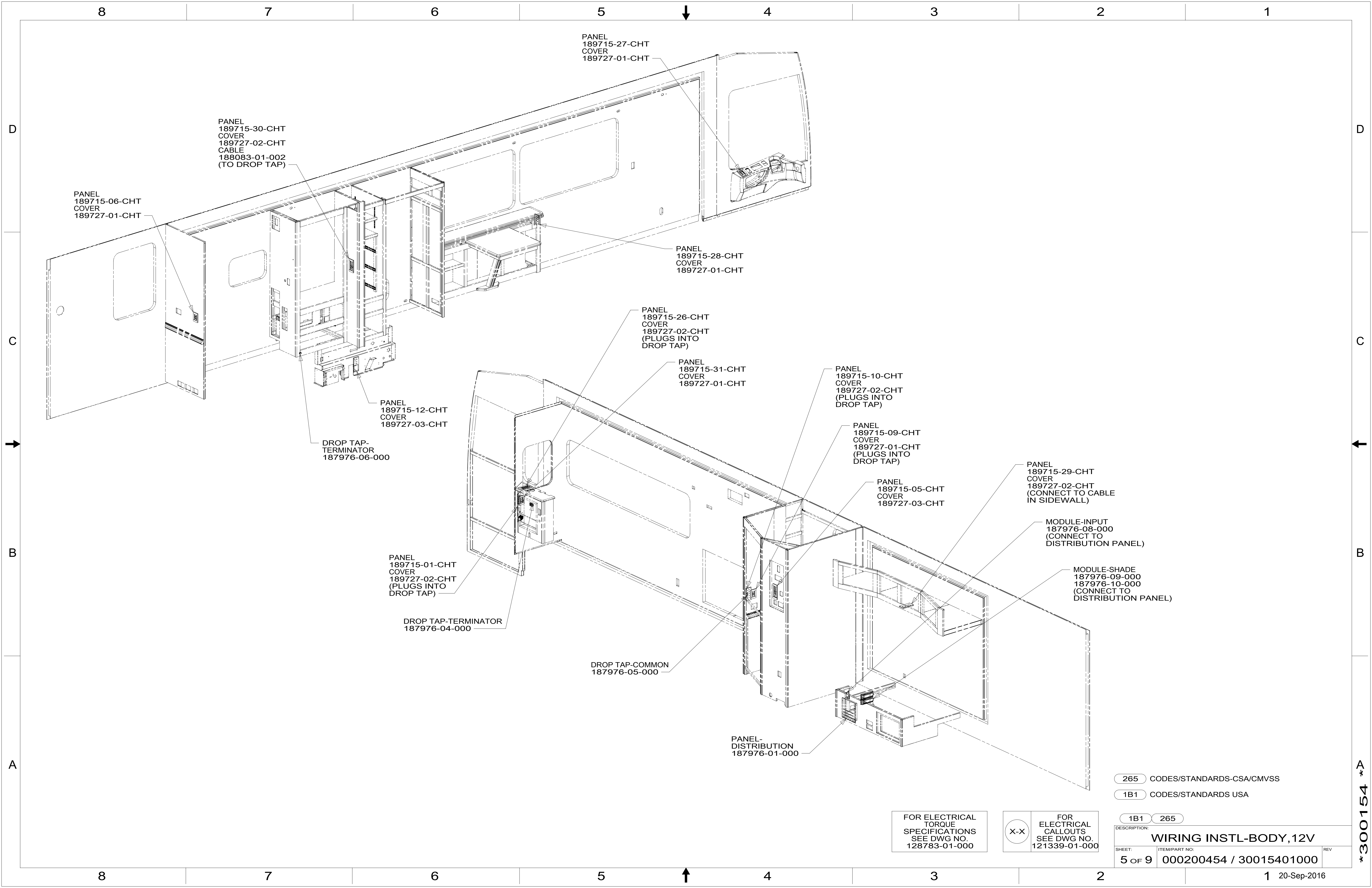
DETAIL DA

FOR ELECTRICAL TORQUE SPECIFICATIONS SEE DWG NO. 128783-01-000

FOR ELECTRICAL CALLOUTS SEE DWG NO. 121339-01-000

265 CODES/STANDARDS-CSA/CMVSS
1B1 CODES/STANDARDS USA

DESCRIPTION:	1B1 265	
WIRING INSTL-BODY, 12V		
SHEET:	ITEM/PART NO:	REV
4 OF 9	000200454 / 30015401000	



PANEL
189715-27-CHT
COVER
189727-01-CHT

PANEL
189715-30-CHT
COVER
189727-02-CHT
CABLE
188083-01-002
(TO DROP TAP)

PANEL
189715-06-CHT
COVER
189727-01-CHT

PANEL
189715-28-CHT
COVER
189727-01-CHT

PANEL
189715-26-CHT
COVER
189727-02-CHT
(PLUGS INTO
DROP TAP)

PANEL
189715-31-CHT
COVER
189727-01-CHT

PANEL
189715-10-CHT
COVER
189727-02-CHT
(PLUGS INTO
DROP TAP)

PANEL
189715-12-CHT
COVER
189727-03-CHT

DROP TAP-
TERMINATOR
187976-06-000

PANEL
189715-09-CHT
COVER
189727-01-CHT
(PLUGS INTO
DROP TAP)

PANEL
189715-05-CHT
COVER
189727-03-CHT

PANEL
189715-29-CHT
COVER
189727-02-CHT
(CONNECT TO CABLE
IN SIDEWALL)

MODULE-INPUT
187976-08-000
(CONNECT TO
DISTRIBUTION PANEL)

PANEL
189715-01-CHT
COVER
189727-02-CHT
(PLUGS INTO
DROP TAP)

MODULE-SHADE
187976-09-000
187976-10-000
(CONNECT TO
DISTRIBUTION PANEL)

DROP TAP-TERMINATOR
187976-04-000

DROP TAP-COMMON
187976-05-000

PANEL-
DISTRIBUTION
187976-01-000

265 CODES/STANDARDS-CSA/CMVSS

1B1 CODES/STANDARDS USA

1B1 265

FOR ELECTRICAL
TORQUE
SPECIFICATIONS
SEE DWG NO.
128783-01-000

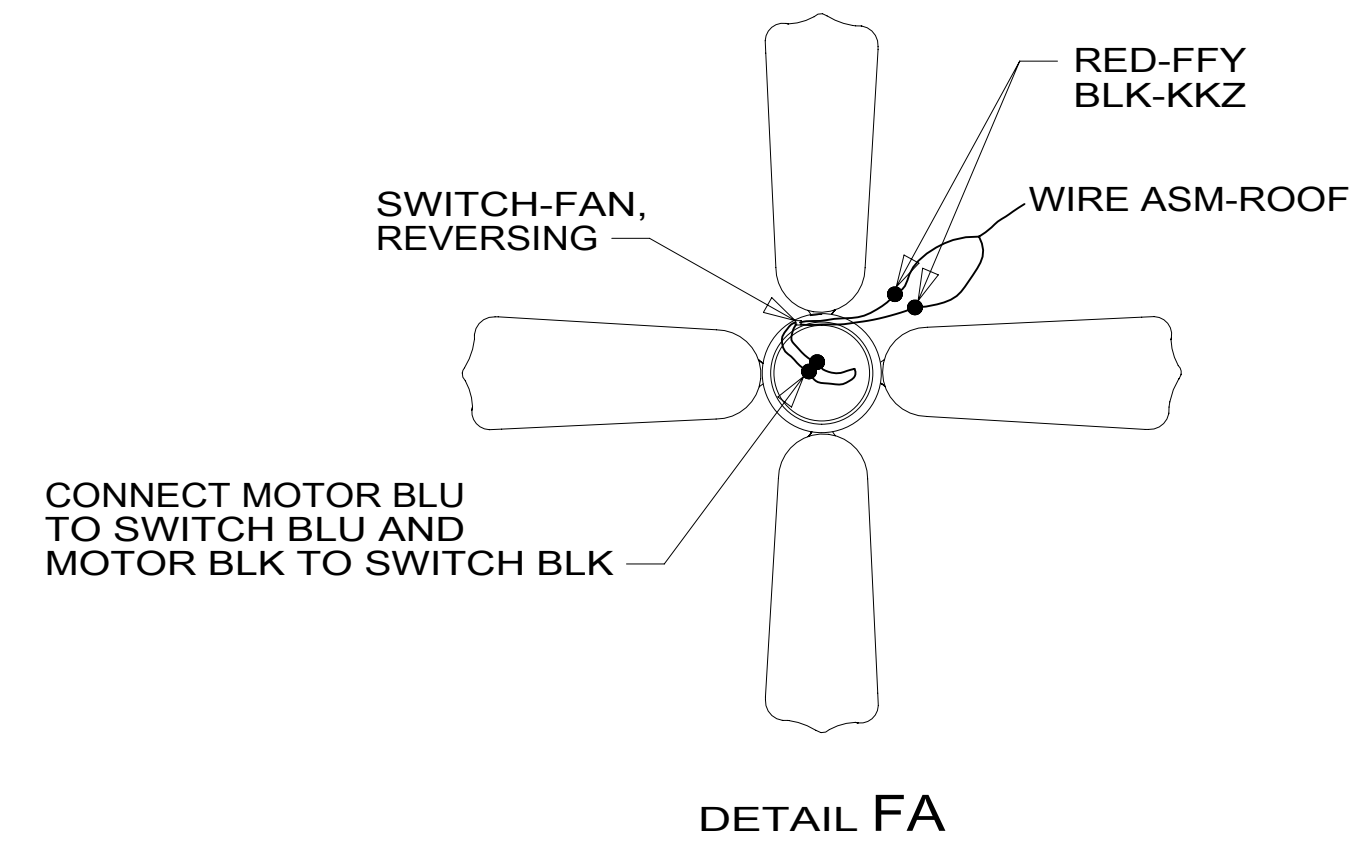
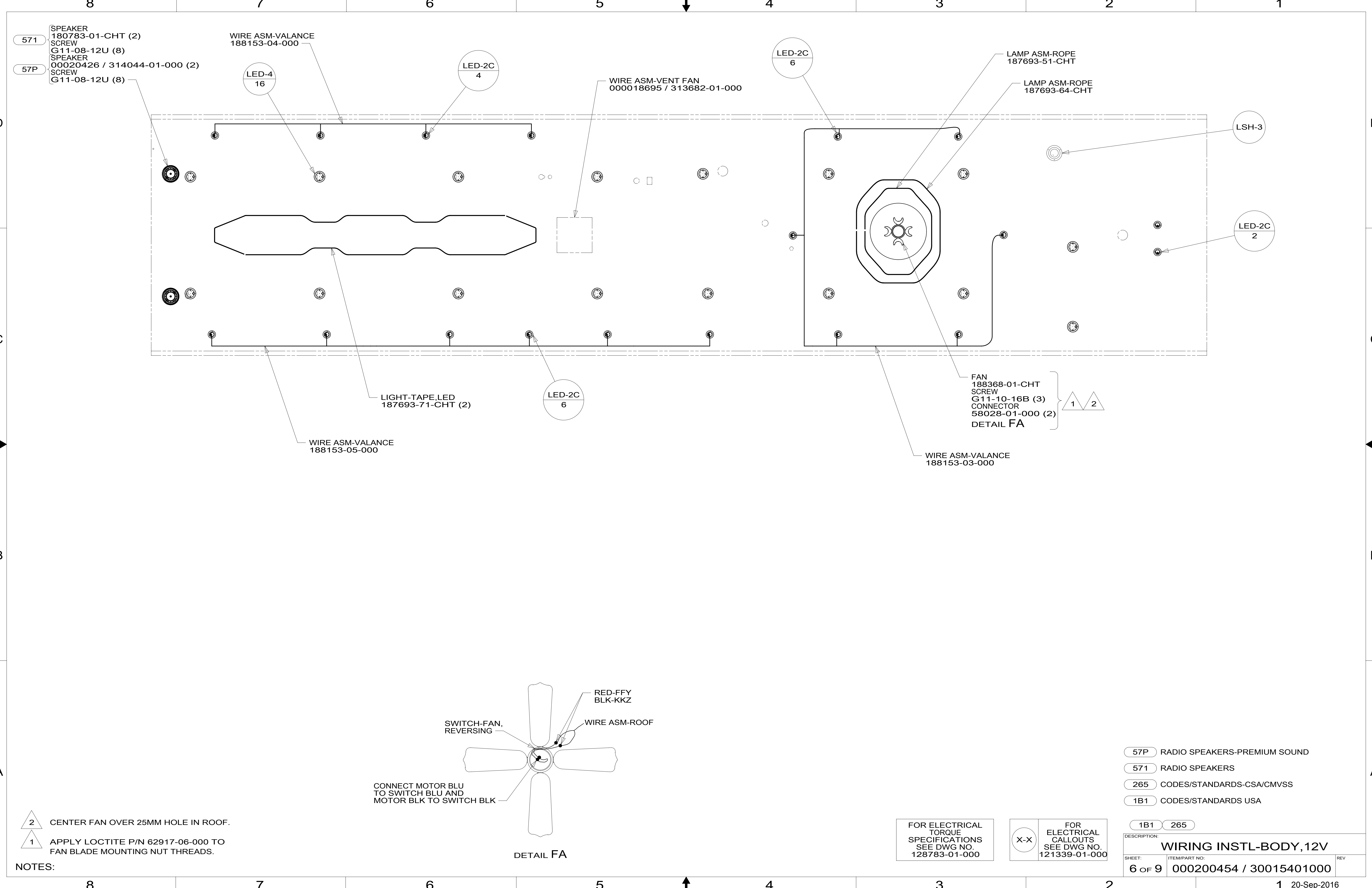
X-X

FOR ELECTRICAL
CALLOUTS
SEE DWG NO.
121339-01-000

DESCRIPTION:
WIRING INSTL-BODY, 12V

SHEET: 5 OF 9 ITEM/PART NO: 000200454 / 30015401000 REV

*300154 *A



- NOTES:
- 2 CENTER FAN OVER 25MM HOLE IN ROOF.
 - 1 APPLY LOCTITE P/N 62917-06-000 TO FAN BLADE MOUNTING NUT THREADS.

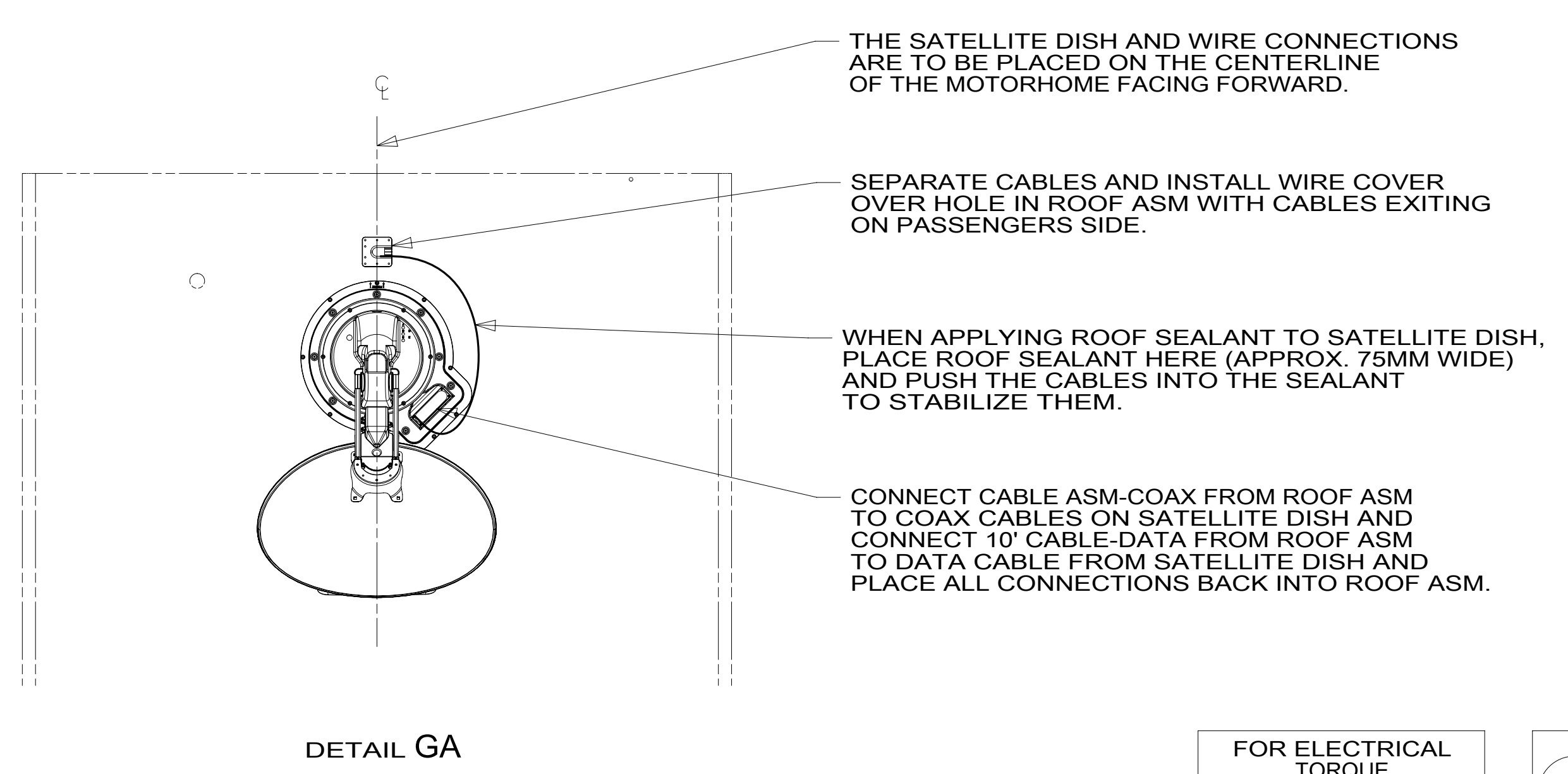
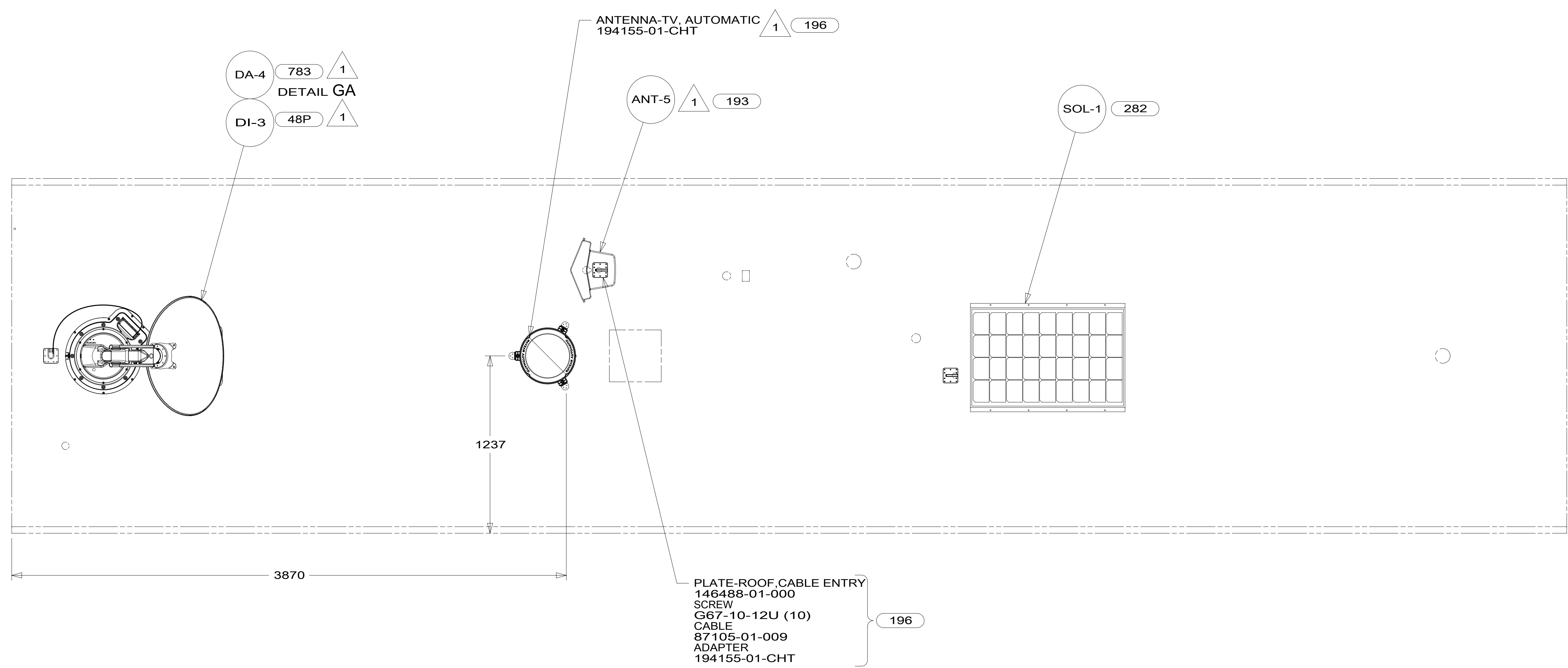
FOR ELECTRICAL TORQUE SPECIFICATIONS SEE DWG NO. 128783-01-000

FOR ELECTRICAL CALLOUTS SEE DWG NO. 121339-01-000

- 57P RADIO SPEAKERS-PREMIUM SOUND
- 571 RADIO SPEAKERS
- 265 CODES/STANDARDS-CSA/CMVSS
- 1B1 CODES/STANDARDS USA

DESCRIPTION:		
WIRING INSTL-BODY, 12V		
SHEET:	ITEM/PART NO.:	REV:
6 OF 9	000200454 / 30015401000	

*300154 *A



- 196 TV ANT-AUTO,DIRECTIONAL AMPL
- 193 TV ANT-DIGITAL AMPLIFIED
- 783 SATELLITE HD TV SYSTEM AUTO
- 282 SOLAR PANEL - 100 WATT
- 48P SAT TV SYSTEM IN-MOTION
- 265 CODES/STANDARDS-CSA/CMVSS
- 1B1 CODES/STANDARDS USA

1 SEE MANUFACTURER'S INSTALLATION FOR ADDITIONAL INFORMATION.

FOR ELECTRICAL TORQUE SPECIFICATIONS SEE DWG NO. 128783-01-000

FOR ELECTRICAL CALLOUTS SEE DWG NO. 121339-01-000

DESCRIPTION:	1B1 265	
WIRING INSTL-BODY, 12V		
SHEET:	ITEM/PART NO:	REV
7 OF 9	000200454 / 30015401000	

D

D

C

C

B

B

A

A



8

7

6

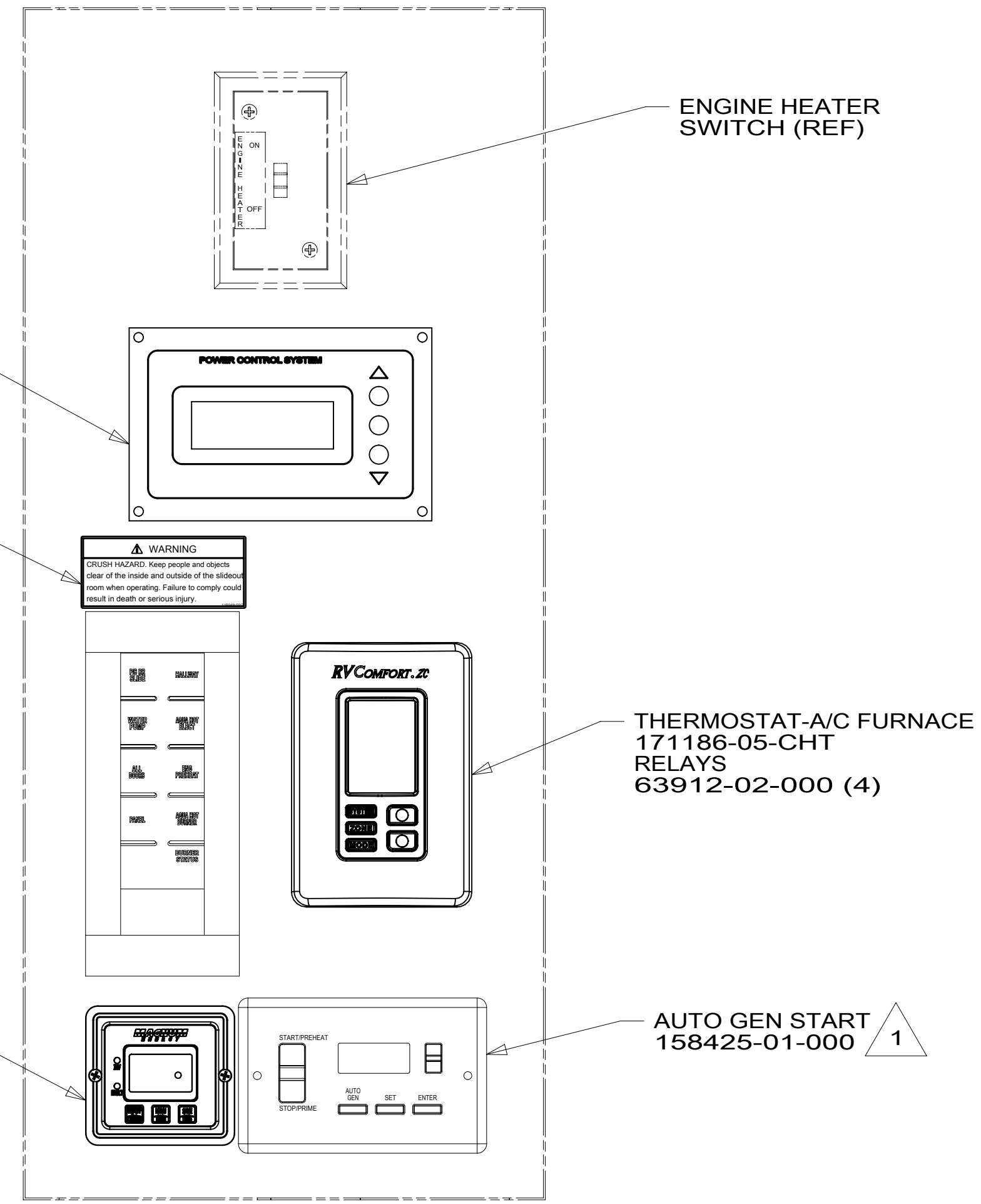
5

4

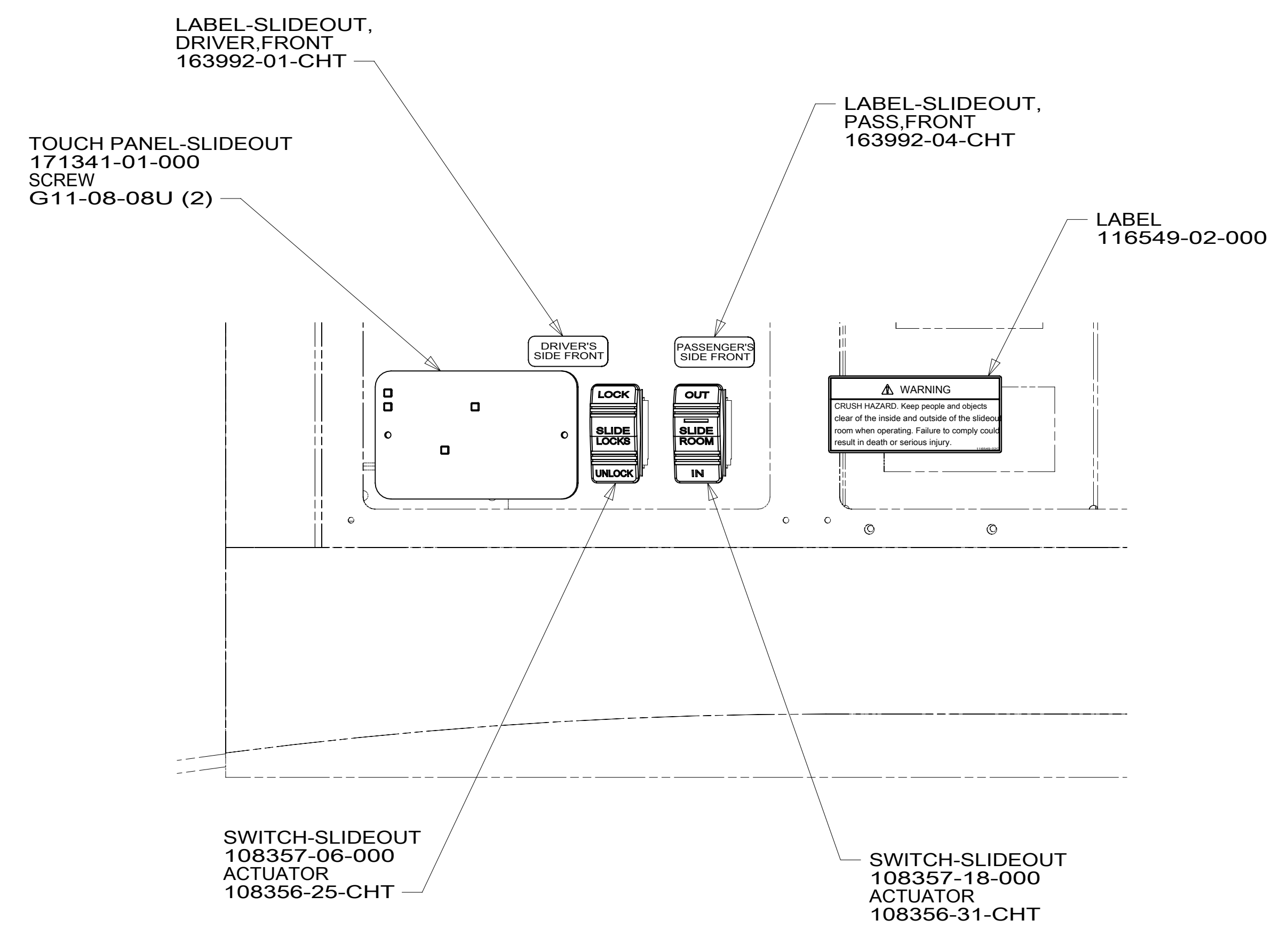
3

2

1



DETAIL HA



DETAIL HB

- NOTES:
- 2 SET 'BAT TYPE' TO 'AGM2'
SET 'LBCO' TO '11VDC'
SET 'BAT AHRS' TO '600 AH'
SEE OWNER'S MANUAL FOR SETUP PROCEDURE.
 - 1 SET 'GEN TYPE' TO 'QD 10-12'
SET 'SAFETY TYPE' TO 'IGNITION'
SET 'SP SENSE' TO 'AFTER'
SEE OWNER'S MANUAL FOR SETUP PROCEDURE.

- 265 CODES/STANDARDS-CSA/CMVSS
- 1B1 CODES/STANDARDS USA

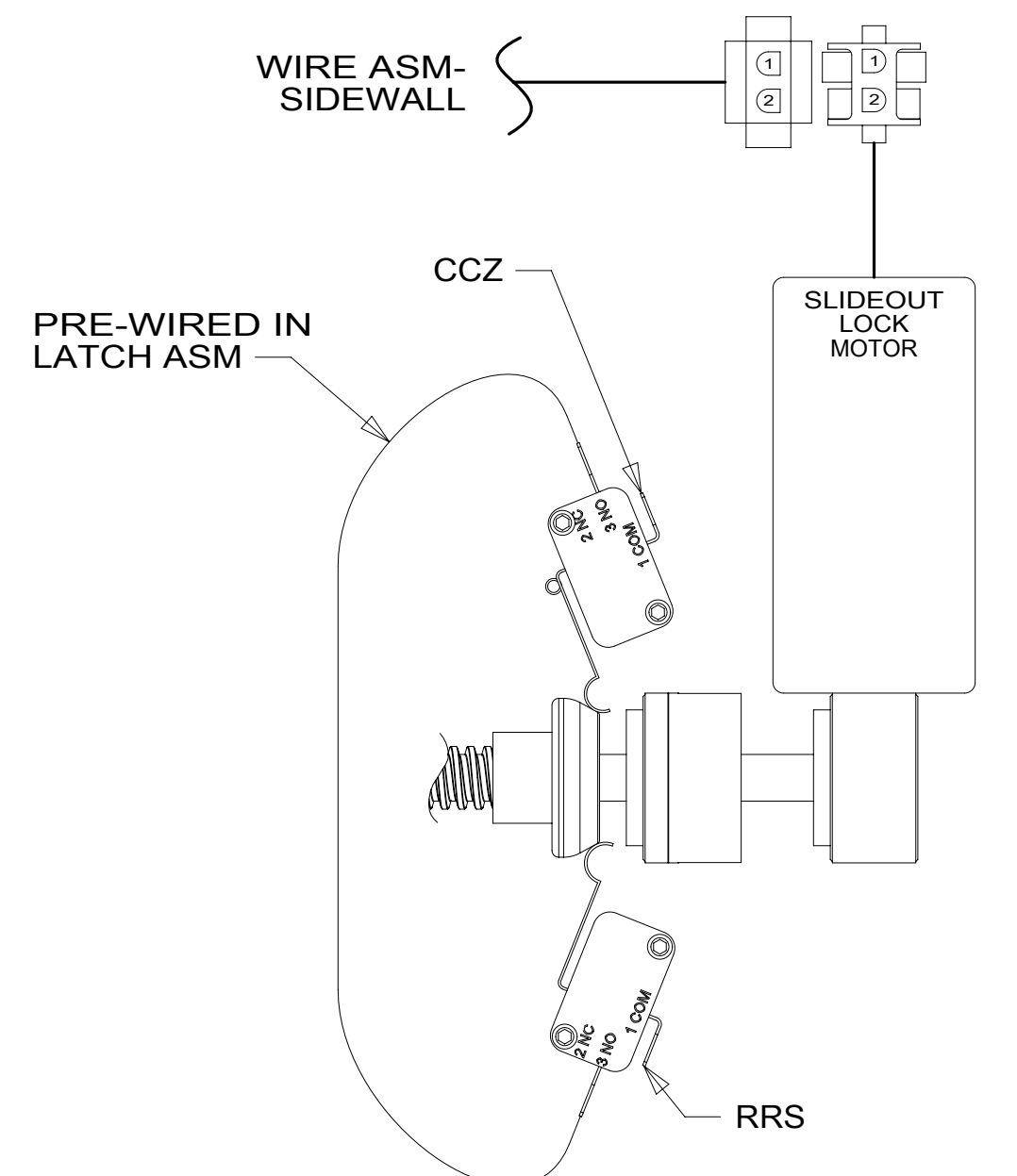
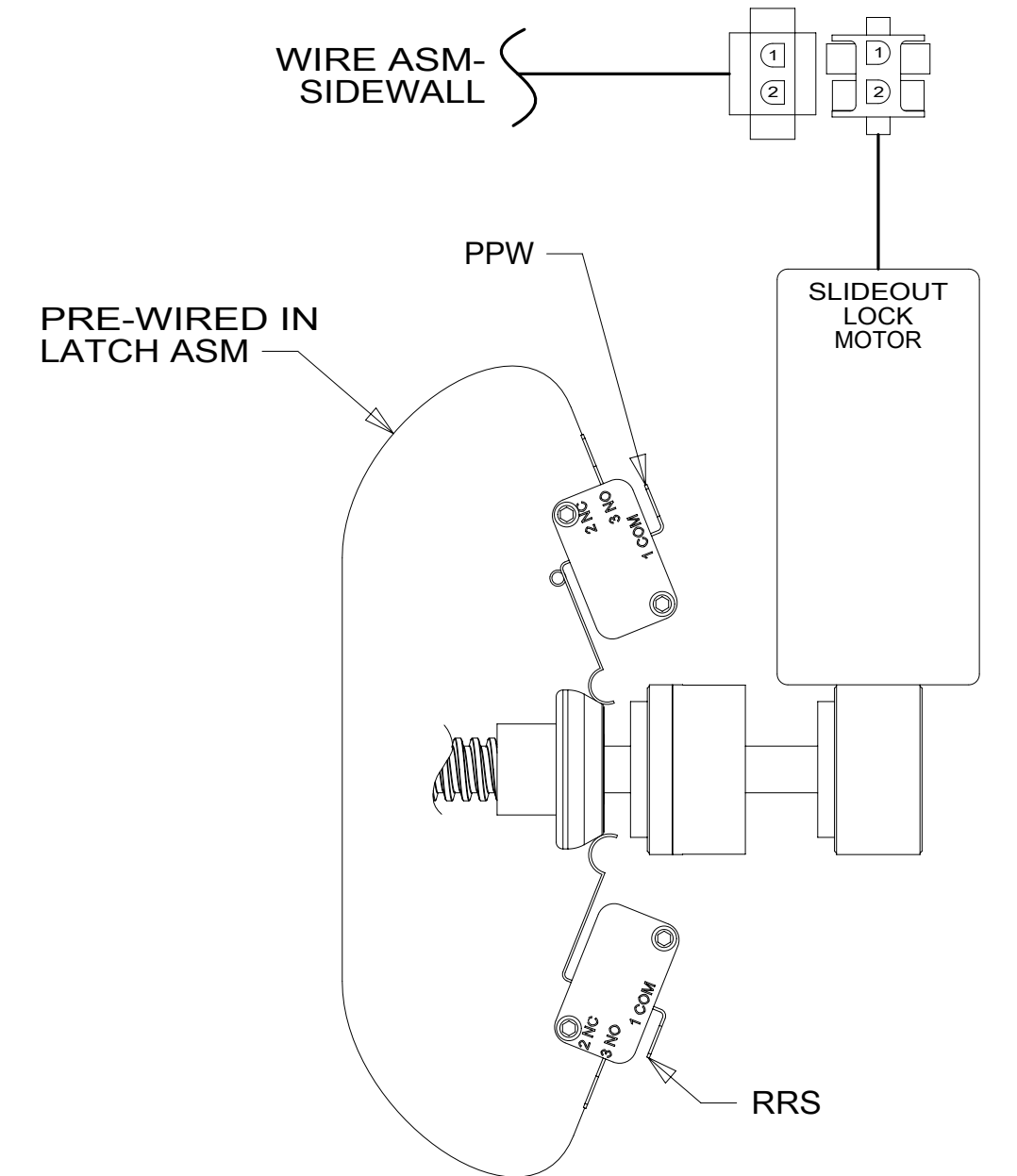
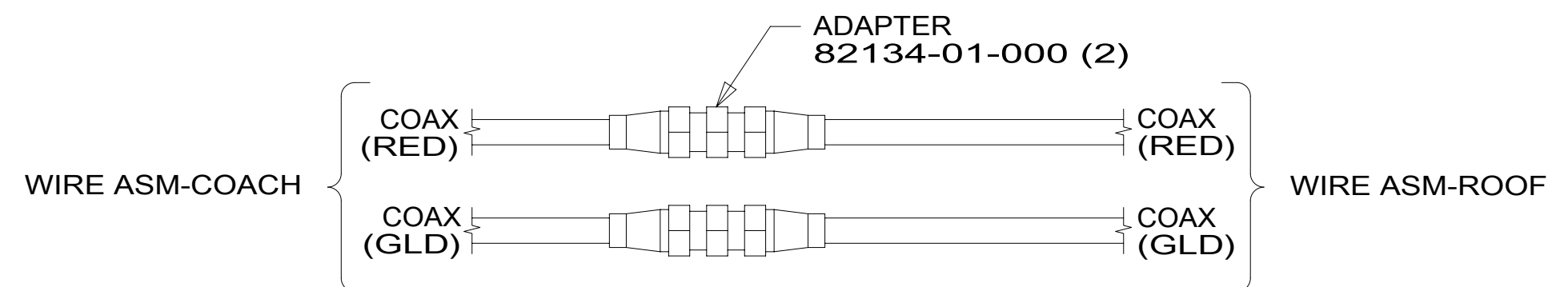
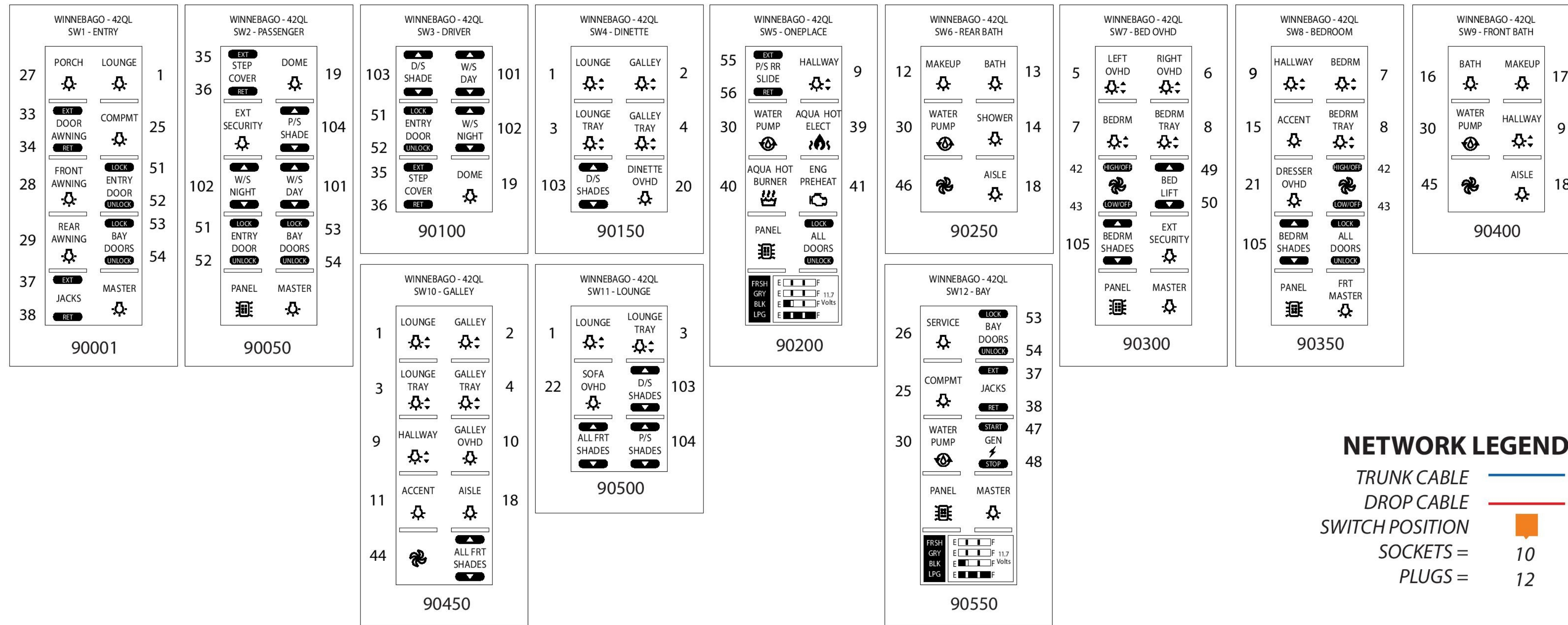
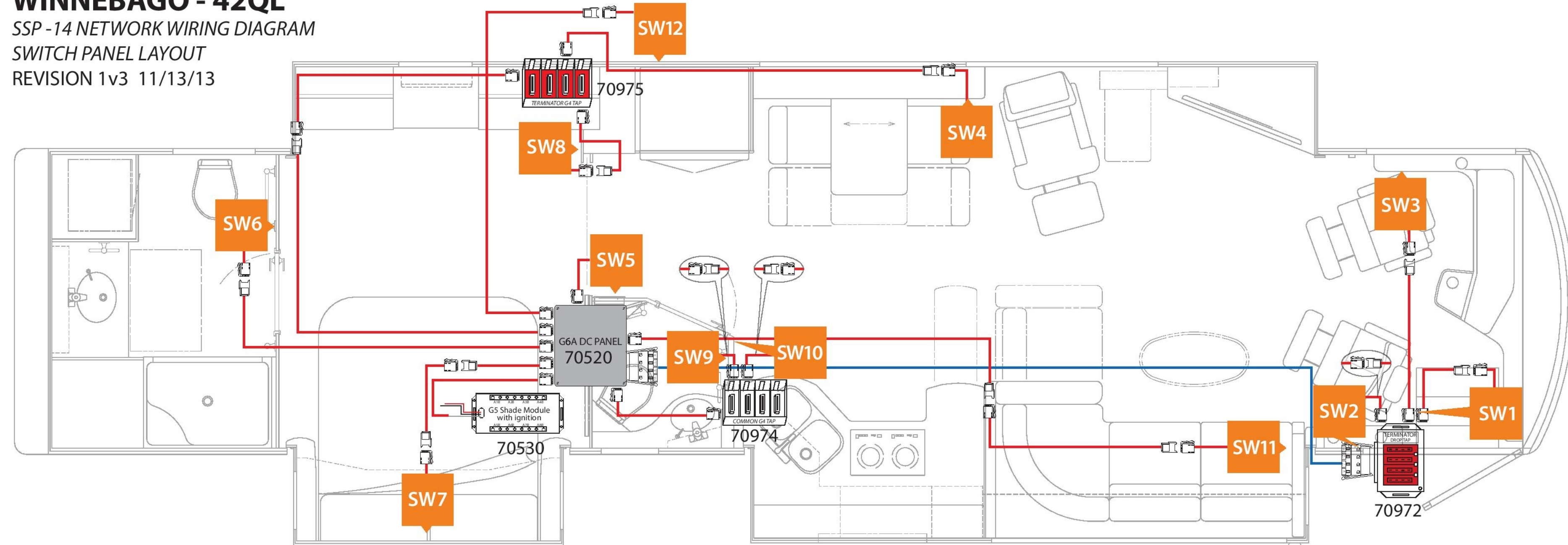
FOR ELECTRICAL TORQUE SPECIFICATIONS SEE DWG NO. 128783-01-000

FOR ELECTRICAL CALLOUTS SEE DWG NO. 121339-01-000

DESCRIPTION:		1B1 265	
WIRING INSTL-BODY, 12V			
SHEET:	ITEM/PART NO.:	REV	
8 OF 9	000200454 / 30015401000		

*300154 *A

WINNEBAGO - 42QL
 SSP -14 NETWORK WIRING DIAGRAM
 SWITCH PANEL LAYOUT
 REVISION 1v3 11/13/13



NETWORK LEGEND
 TRUNK CABLE ————
 DROP CABLE ————
 SWITCH POSITION ■
 SOCKETS = 10
 PLUGS = 12

FOR ELECTRICAL TORQUE SPECIFICATIONS SEE DWG NO. 128783-01-000

FOR ELECTRICAL CALLOUTS SEE DWG NO. 121339-01-000

265 CODES/STANDARDS-CSA/CMVSS
 1B1 CODES/STANDARDS USA

DESCRIPTION: 1B1 265
WIRING INSTL-BODY, 12V
 SHEET: 9 OF 9 ITEM/PART NO: 000200454 / 30015401000 REV

300154