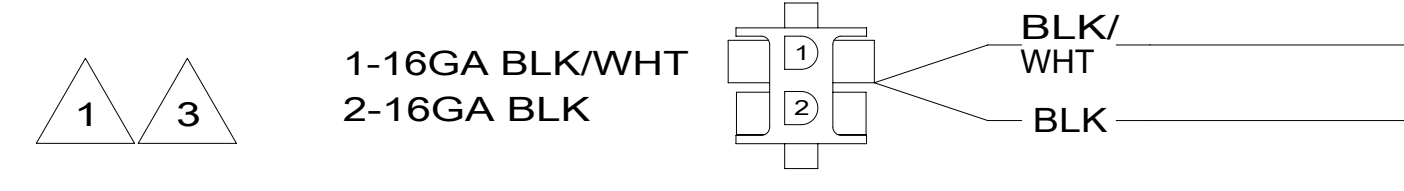
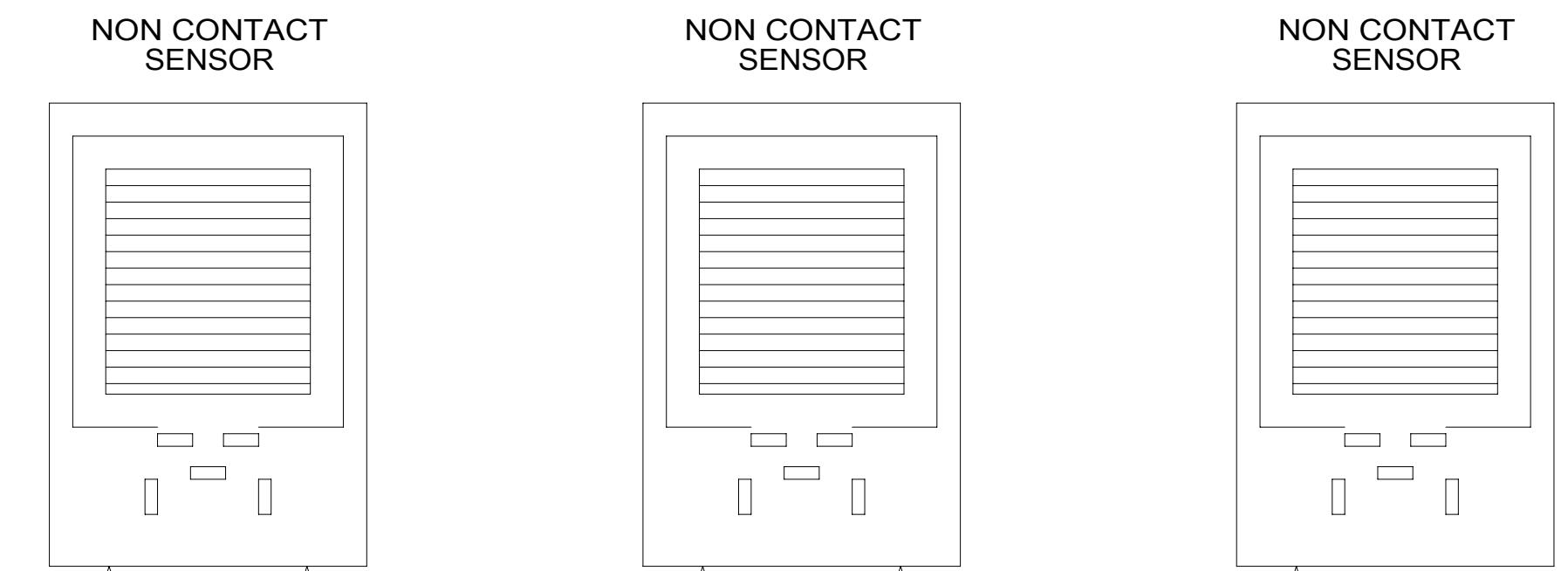


**WIRING DIAGRAM-TANK,WATER
OR
WIRING DIAGRAM-TANK,MAIN**
(WIRE ASM-151316 REV A)



WIRING DIAGRAM-AUX HOLDING
(WIRE ASM-151317 REV A)

- NOTES:**
- 3 IF TWO MONITOR PANELS ARE UTILIZED THIS WIRE ASM CONNECTS TO WIRE ASM-TANK,DIODE PACK 151808-01 SHT2.
 - 2 IF TWO MONITOR PANELS ARE UTILIZED THIS WIRE ASM CONNECTS TO WIRE ASM-TANK,DIODE PACK 151808-02 SHT2.
 - 1 IF ONLY ONE MONITOR PANEL IS USED SEE WIRING DIAGRAM-BODY FOR ADDITIONAL INFORMATION.

WINNEBAGO
COPYRIGHT 2016 WINNEBAGO INDUSTRIES, INC.

DSNR:	ALL DIMENSIONS ARE IN MILLIMETERS
DFFR:	
UNSPECIFIED TOLERANCES:	MATERIAL:
WHOLE DIM (X) ±	
ONE-PLACE (X.X) ±	
TWO-PLACE (X.XX) ±	
ANGLE ±	
REFER TO ES0018 FOR FASTENER TIGHTENING GUIDELINES	WEIGHT: (LBS) FIRST USED:
DESCRIPTION: WIRING DIAGRAM-HOLDING TANKS	
SHEET: 1 OF 2	ITEM/PART NO: 000200447 / 30013501000
REF:	1 04-Aug-2016

8

7

6

5



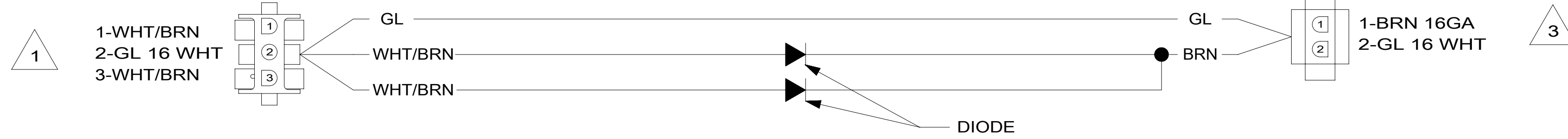
4

3

2

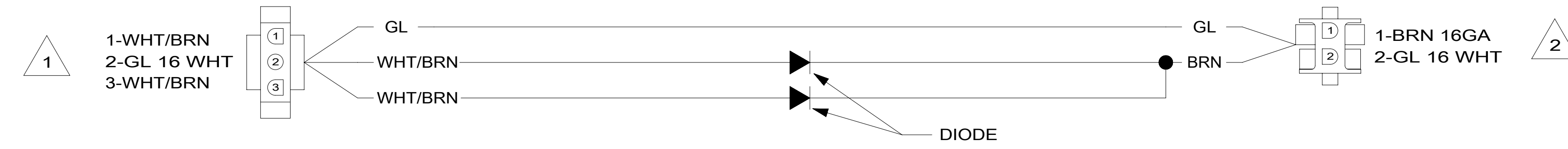
1

WIRE ASM-COACH



WIRING DIAGRAM-TANK,DIODE PACK
151808-01-000 REV A

WIRE ASM-COACH



WIRING DIAGRAM-TANK,DIODE PACK
151808-02-000 REV A

- NOTES:
- 3 CONNECT TO WIRE ASM-TANK,AUX. SEE SHT 1.
 - 2 CONNECT WIRE ASM-TANK,WATER OR MAIN. SEE SHT 1.
 - 1 SEE WIRING DIAGRAM-BODY FOR ADDITIONAL INFORMATION.

DESCRIPTION: WIRING DIAGRAM-HOLDING TANKS		
SHEET: 2 OF 2	ITEM/PART NO: 000200447 / 30013501000	REV

8

7

6

5



4

3

2

1 04-Aug-2016