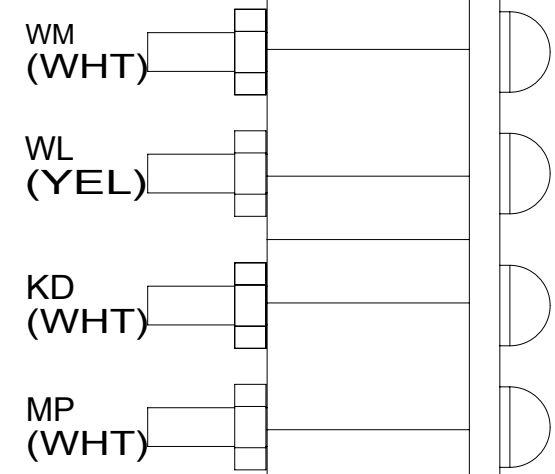


DETAIL AC

THIS SIDE POINTED TO TOP OF DOOR



DETAIL AB

15 SWITCH MOUNTS IN GENERATOR TRAY RELEASE HANDLE. SEE GENERATOR INSTL FOR ADDITIONAL INFORMATION.

14 WIRE TIE SAT TUNER TO DASH RADIO WIRING.

13 RUN CABLE THRU LEFT HAND COVE TO FRONT OF UNIT AND DOWN LEFT A-POST TO MONITOR.

12 ROUTE UP A-POST TO RUN THRU ROOF.

11 CONNECT 2-12 PIN HSGS TO EACH OTHER WITHOUT 57P

10 ROUTE CABLE TO EXTERIOR MIRRORS. CAMERA IS IN MIRROR.

9 ROUTE CABLE TO EXTERIOR THRU HOLE IN PANEL ALONG WITH HEATER WIRING TO RIGHT CAMERA.

8 ALIGN CAMERA IN CENTER OF SHROUD OPENING AND ADJUST SO BACKWALL IS JUST VISIBLE.

7 PARTS SUPPLIED WITH REAR CAMERA.

6 USE TAPE 8363-03-000 TO SECURE WIRES IN A-POST.

5 SEE ANTENNA INST-RADIO & CB FOR ADDITIONAL INFO.

4 APPLY FOAM TAPE TO BOTTOM OF FAN TO SEAL FAN TO PANEL.

3 CABLE SUPPLIED WITH SATELLITE RADIO RECEIVER. PLUG INTO BACK OF RADIO & TIE TO IP,MAIN. ROUTE UP A-POST WITH RADIO ANTENNA WIRE.

2. USE SEAL-TRIM 113452-01-000 TO PROTECT WIRES FROM SHARP EDGES.

1. SEE WIRING INSTL-CHASSIS FOR ADDITIONAL INFORMATION.

NOTES:

FAN-DEFROSTER 154851-01-000
TAPE-FOAM 99069-01-000 (120)(4) (45)(2)
SCREW G11-08-12B (6)
PANEL-PLENUM 170841-04-CHT
SCREW G39-10-12U (6)
ADAPTER-HOSE 171749-01-CHT (2)
HOSE 179183-01-000 (650)

RADIO ANTENNA WIRE
CAMERA SWITCHER (ON FLOOR BEHIND METAL PANEL)
RECEIVER-SATELLITE RADIO 181908-05-000 (70C)
AMPLIFIER 193630-02-000
SCREW G39-10-08U (4)
WIRE ASM-AMP 194217-01-000
194217-02-000
194217-03-000

DETAIL FA

2 PIN HSG TO CLEARANCE LIGHTS

(2) BUTT SPLICES TO SKYLIGHT SHADE
RRM-BLK
RRN-BLK/WHT
GROMMET 61603-01-000

CABLE-MONITOR 180731-02-000

571 SPEAKER 171547-01-CHT (2)
SCREW G11-08-20U (8)
57P SPEAKER 000020426 / 314044-01-000 (3)
SCREW G11-08-20U (12)

36C MOBILEYE 560 314187-01-000
DETAIL JA

FILTER-NOISE,12V 128074-02-000

WIRE ASM-IP,MAIN 000002435 / 310071-01-000

SWITCHES
DETAIL DB

CLAMP 010497-02-000

6 & 2 PIN HOUSING TO LEFT MIRROR
CABLE-MONITOR 180731-03-000

SWITCH-GENERATOR SLIDE 108357-06-000
ACTUATOR 108356-01-000

BRACKET-RELAY PANEL 145448-01-CHT
SCREW G67-10-08U (4)

12V BREAKER PANEL
DETAIL CA

DOOR ASM 145066-03-CHT
SCREW G67-06-10U (6)
SCREW G67-10-08U (4)

BOX ASM-SPEAKER 193358-01-XXX
SCREW G11-10-16U (4)
SPEAKER-8" 193633-01-000
WIRE ASM-PIGTAIL 193633-04-000
SCREW G11-10-12U (4)
GRILL 193633-03-000
PLATE-SPEAKER 194221-01-000 (2)
SCREW G11-08-08U (8)
SEAL 185989-07-CHT (360 MM) (2)
SCREW G11-10-12U (4)

FOR ELECTRICAL TORQUE SPECIFICATIONS SEE DWG NO. 128783-01-000

FOR ELECTRICAL CALLOUTS SEE DWG NO. 121339-01-000

TO DOOR CONTACT PLATE
DETAIL AB

DETAIL EB

WIRE ASM-OVHD,FRONT 000005701 / 312358-01-000

GROMMET 071015-45-000

PANEL ASM 145063-09-CHT
SCREW G67-06-10U (6)

(6) BUTT SPLICES TO SUNVISOR
HHK-BLK
HHL-BLK/GRY
HHM-BLK
HHN-BLK/GRY
JJX-BRN (2)

LIGHT-TAPE,LED 190025-68-CHT

SOLAR SHADE
NIGHT SHADE

TO REAR CAMERA
DETAIL AA

RECEPTACLE-12V 111414-01-000
DETAIL AC

GROMMET 088756-01-000

CABLE-MONITOR 180731-03-000

NUT D29-04-00U (2)

WASHER E13-14-00U (2)

BRACKET-MOUNT, CAMERA 152022-05-CHT

SCREW G39-10-12B (EXT) (4)

CAMERA BRACKET

MOUNTS TO PANEL ASM-REAR CAP

CAMERA 176654-17-CHT

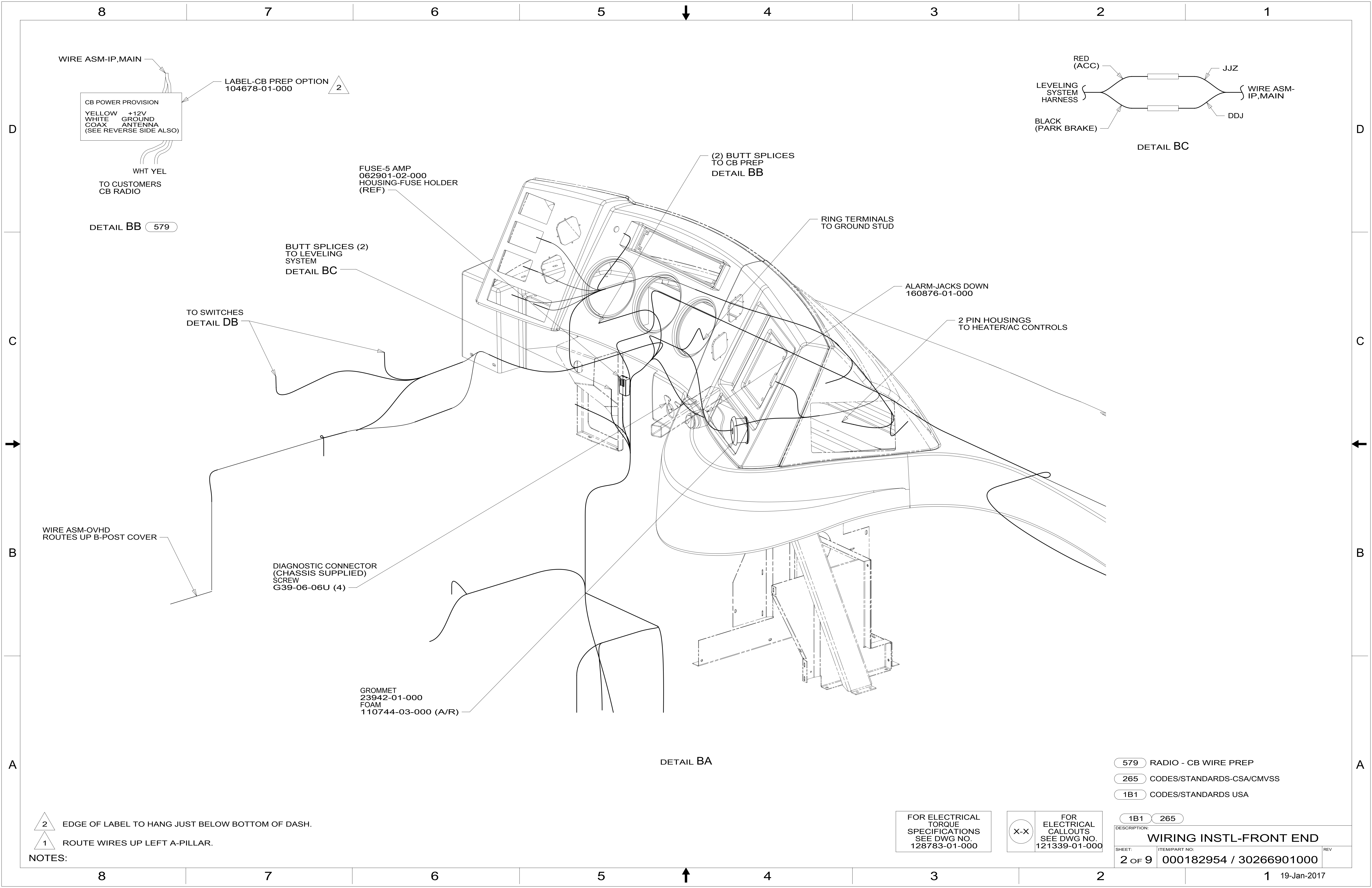
DETAIL AA

- 571 RADIO SPEAKERS
- 57P RADIO SPEAKERS-PREMIUM SOUND
- 36C COLLISION AVOIDANCE SYSTEM
- 70C RADIO - SATELLITE
- 265 CODES/STANDARDS-CSA/CMVSS
- 1B1 CODES/STANDARDS USA

1B1 265

COPYRIGHT 2016 WINNEBAGO INDUSTRIES, INC.

DSNR:	ALL DIMENSIONS ARE IN MILLIMETERS	MATERIAL:
DFFR:		
UNSPECIFIED TOLERANCES:		
WHOLE DIM (X)	3	
ONE-PLACE (X.X)	1.5	
TWO-PLACE (X.XX)	0.50	
ANGLE	1°	
REFER TO ES0018 FOR FASTENER TIGHTENING GUIDELINES	WEIGHT: (LBS)	FIRST USED:
		16 RL-SER
DESCRIPTION:		
WIRING INSTL-FRONT END		
SHEET: 1 OF 9	ITEM/PART NO: 000182954 / 30266901000	REV:



2 EDGE OF LABEL TO HANG JUST BELOW BOTTOM OF DASH.
 1 ROUTE WIRES UP LEFT A-PILLAR.

NOTES:

FOR ELECTRICAL TORQUE SPECIFICATIONS SEE DWG NO. 128783-01-000

FOR ELECTRICAL CALLOUTS SEE DWG NO. 121339-01-000

- 579 RADIO - CB WIRE PREP
- 265 CODES/STANDARDS-CSA/CMVSS
- 1B1 CODES/STANDARDS USA

DESCRIPTION: WIRING INSTL-FRONT END		
SHEET: 2 OF 9	ITEM/PART NO: 000182954 / 30266901000	REV

HEADLAMP MODULE
(CHASSIS SUPPLIED)
SCREW
G1108-08U (2)

GROMMET
23942-01-000
SEAL

BRACKET-MOUNTING
118571-07-000 (2)
SCREW
G19-10-08U (4)

CHASSIS POWER

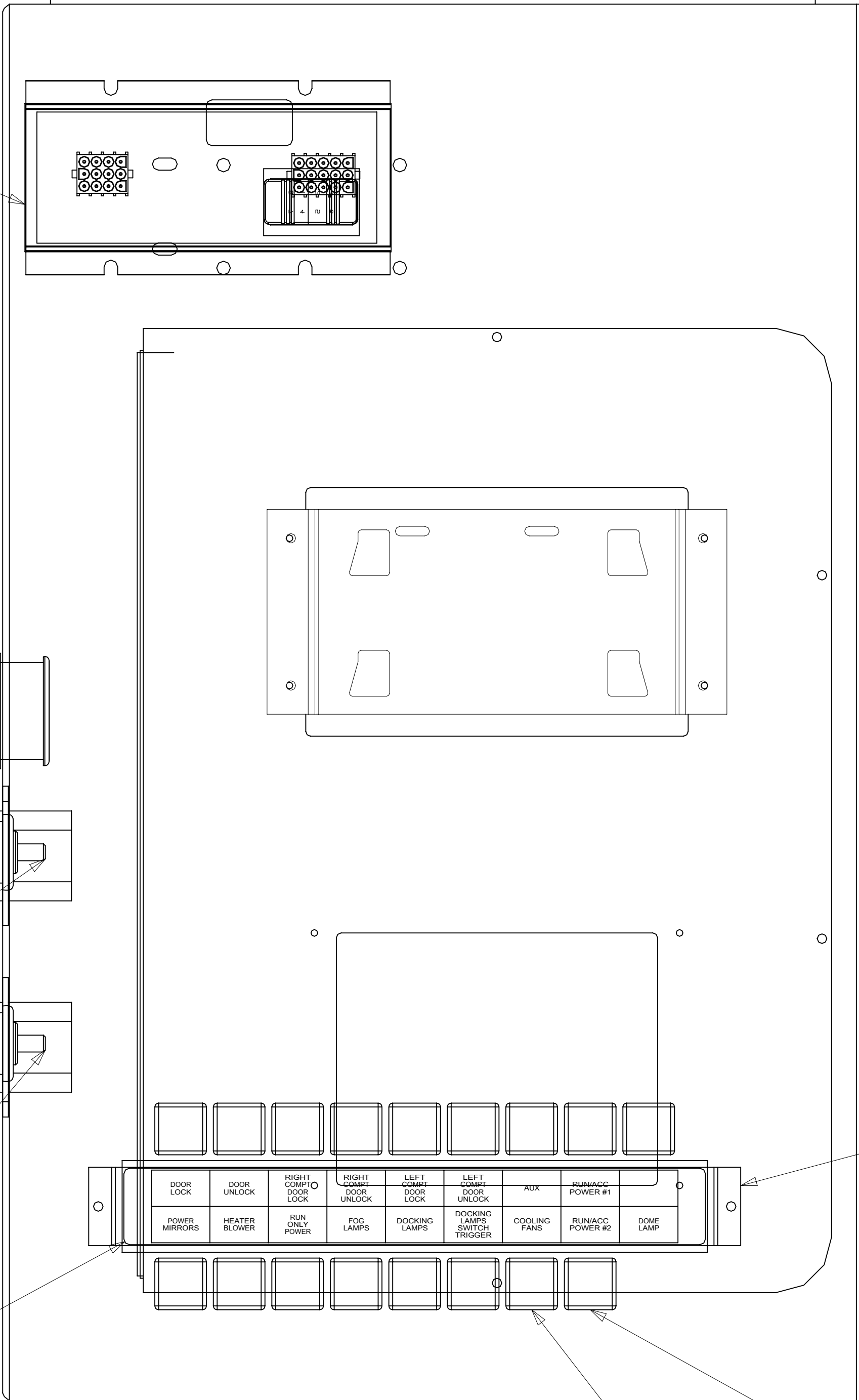
(2) 6 GA WIRES
FROM WIRE ASM-IP,MAIN

COACH POWER

STUD-FEED THRU
118499-01-000 (2)

8 GA WIRE
FROM WIRE ASM-IP,MAIN

LABEL
136161-06-CHT

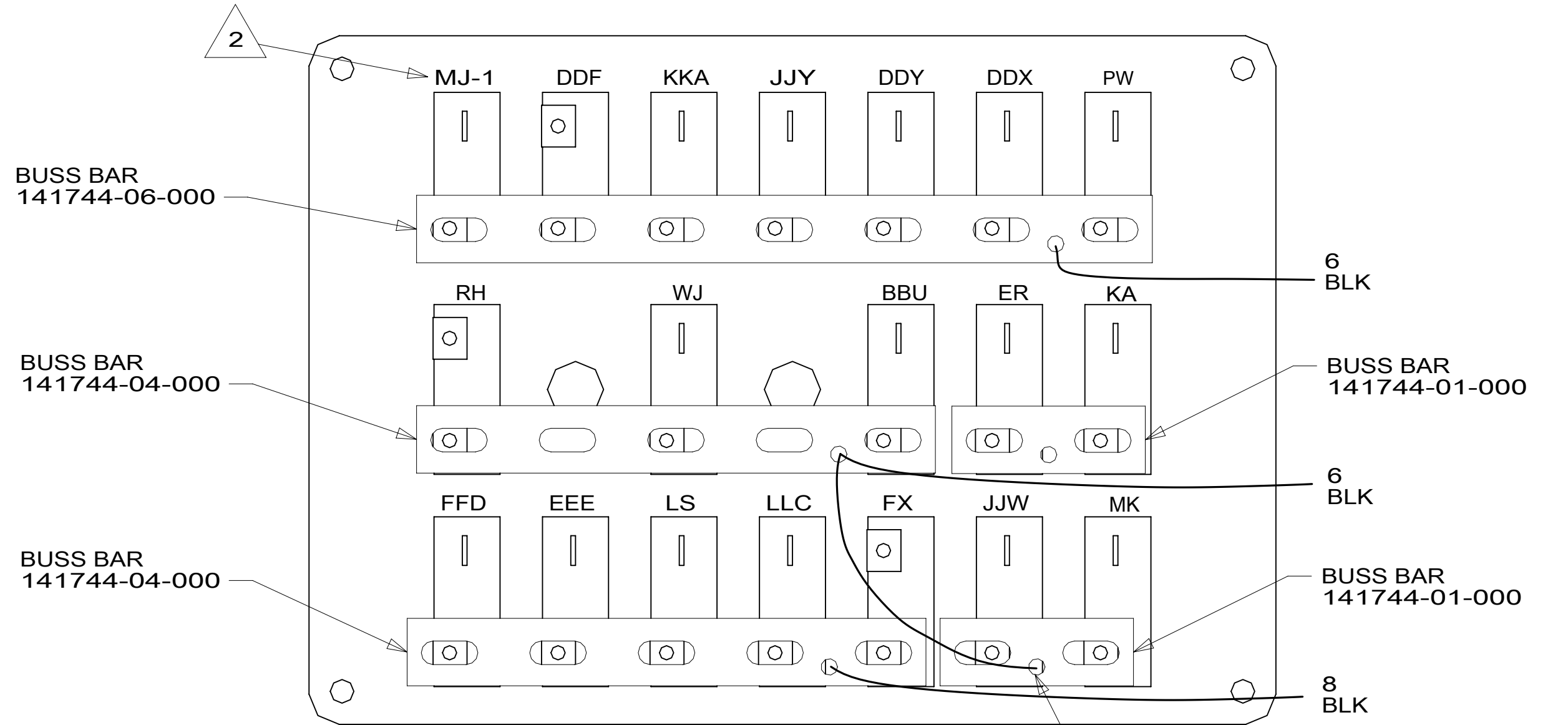


VIEW CB
(WITH COVER REMOVED) 3

BRACKET
136120-02-CHT
SCREW
G11-08-08U (2)

RELAY
63912-02-000 (17)
SCREW
G11-08-08U (17)

RELAY
FOR WIRE ASM-WIPER
(REF)



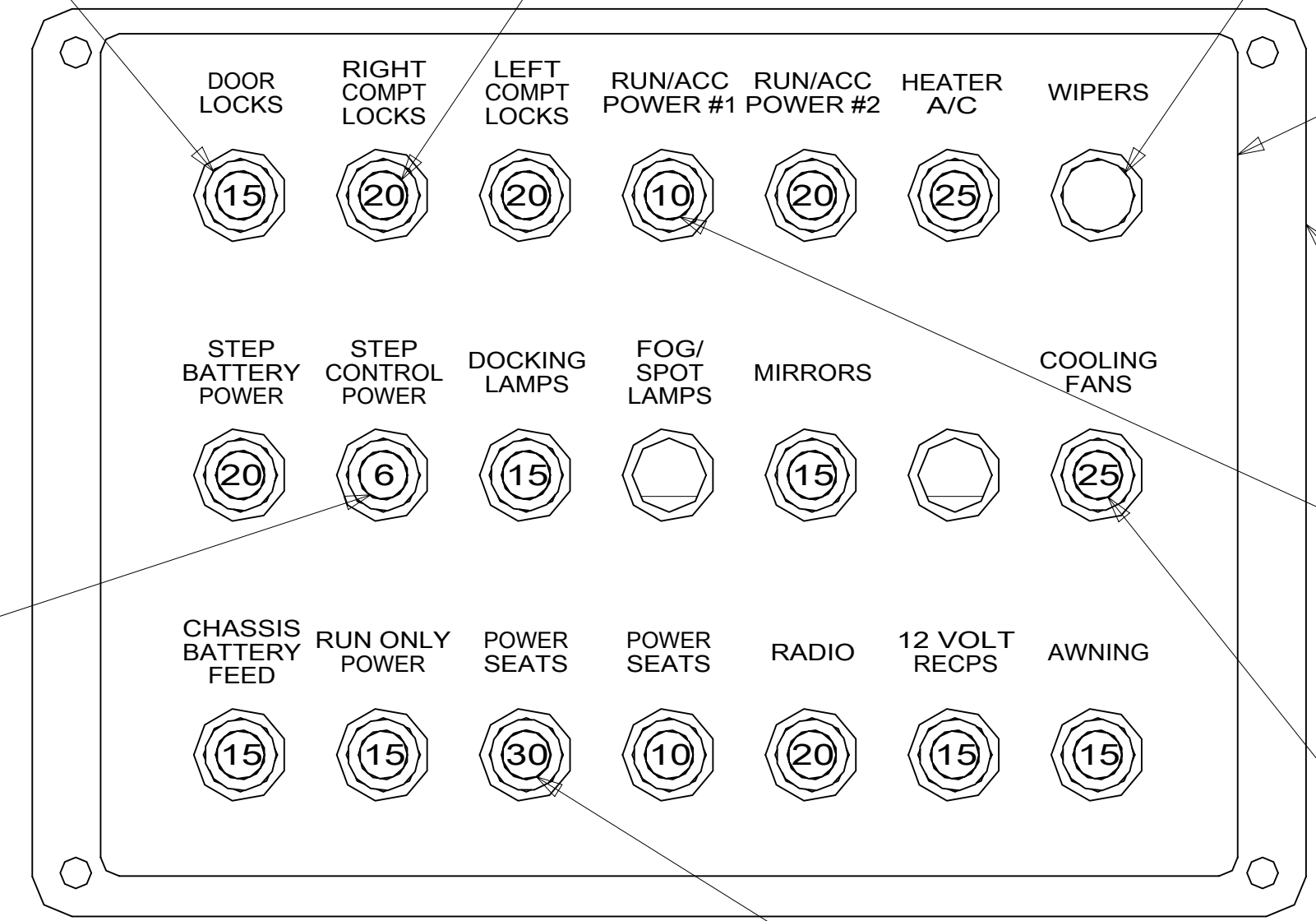
DETAIL CA
(BACK VIEW) 1

CIRCUIT BREAKER-15 AMP
93654-02-000 (7)
SCREW
G52-06-04U (7)

CIRCUIT BREAKER-20 AMP
93654-03-000 (5)
SCREW
G52-06-04U (5)

BREAKER-SELF
RESET,20 AMP
182283-01-000
SCREW
G52-06-04U

CIRCUIT BREAKER-6 AMP
93654-01-000
SCREW
G52-06-04U



LABEL-CIRCUIT
BREAKER-MAIN
93236-80-000

PLATE-CIRCUIT
BREAKER
139067-07-CHT
SCREW
G11-08-08U (4)

CIRCUIT BREAKER-10 AMP
093654-05-000 (2)
SCREW
G52-06-04U (2)

CIRCUIT BREAKER-25 AMP
93655-01-000 (2)
SCREW
G52-06-04U (3)

CIRCUIT BREAKER-30 AMP
93655-02-000
SCREW
G52-06-04B

DETAIL CA
(FRONT VIEW)

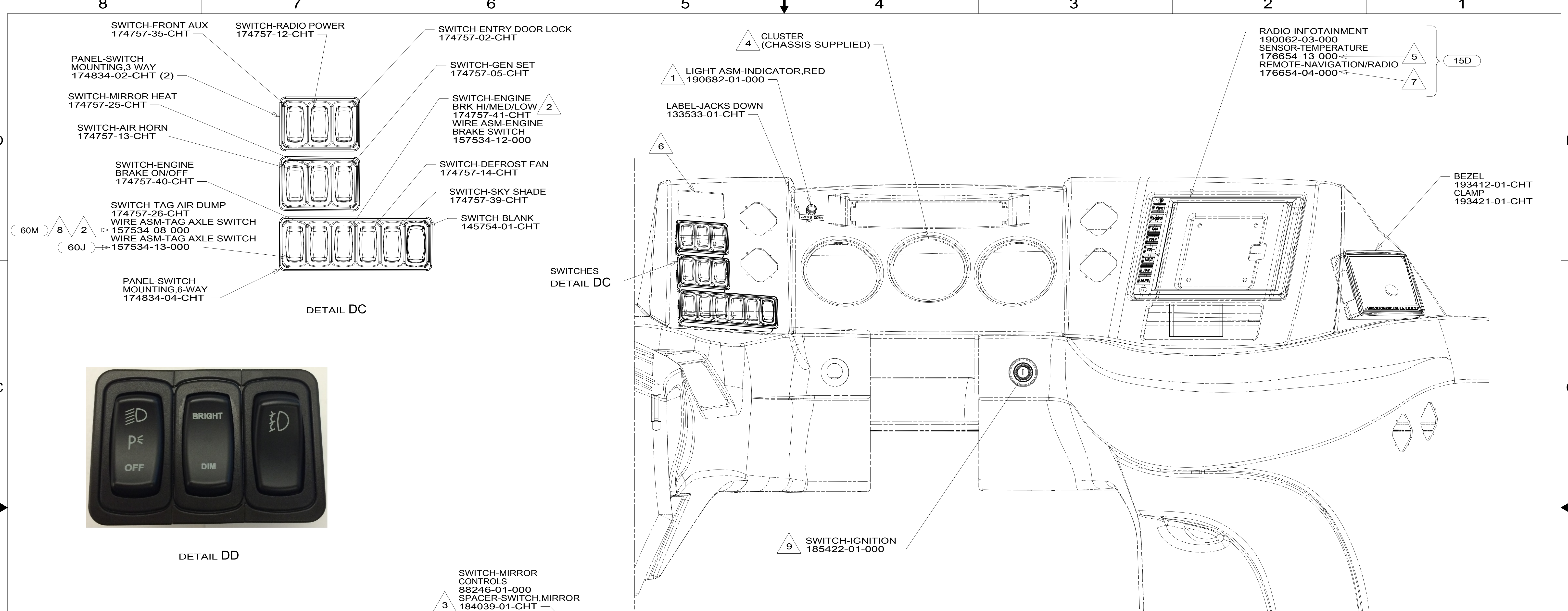
- NOTES:
- 3 SEAL ALL SCREWS ON EXTERIOR SIDE OF COMPARTMENT. REFER TO SEALANT MANUAL.
 - 2 FROM WIRE ASM-WIPER.
 - 1 CIRCUITS LABELED ON BREAKER ARE FROM WIRE ASM-IP, MAIN, UNLESS OTHERWISE SPECIFIED.

- 265 CODES/STANDARDS-CSA/CMVSS
- 1B1 CODES/STANDARDS USA

FOR ELECTRICAL
TORQUE
SPECIFICATIONS
SEE DWG NO.
128783-01-000

FOR ELECTRICAL
CALLOUTS
SEE DWG NO.
121339-01-000

DESCRIPTION: WIRING INSTL-FRONT END		
SHEET: 3 OF 9	ITEM/PART NO: 000182954 / 30266901000	REV



60M 8 2
60J



DETAIL DD

DETAIL DC

SWITCHES
DETAIL DC

DETAIL DA

DETAIL DB

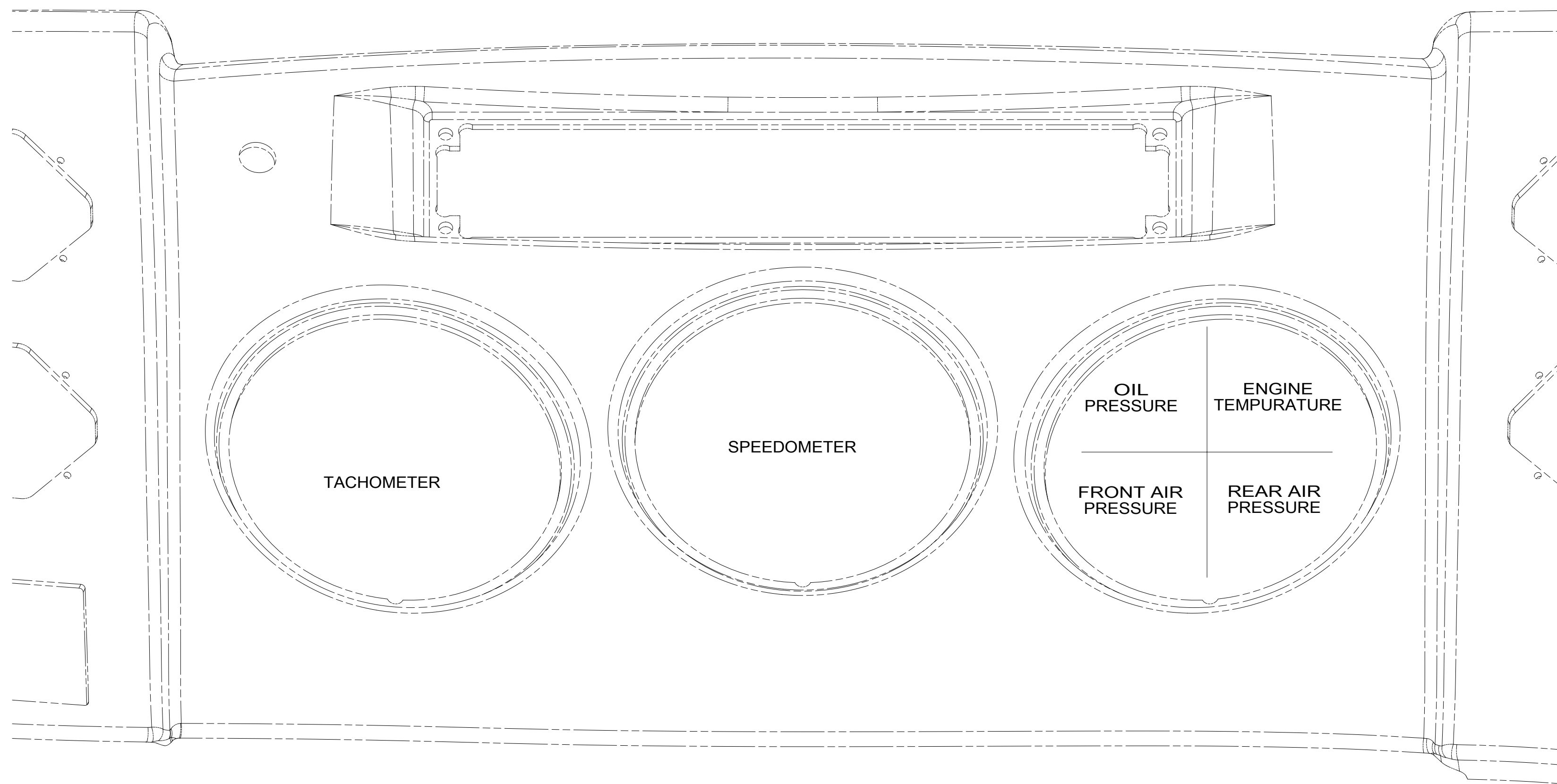
- NOTES:**
- 9 REPLACE CHASSIS SUPPLIED IGNITION SWITCH.
 - 8 NOT USED WITH 60J
 - 7 TO BE SUPPLIED LOOSE IN WINNEBAGO OWNERS CASE.
 - 6 CHASSIS SUPPLIED ROCKER SWITCHES.
DOME LAMP SWITCH NOT USED. SEE DETAIL DD FOR SWITCH POSITION.
 - 5 ROUTE TEMP SENSOR THRU HOLE IN BULKHEAD TO BRACKET (SEE SHT 7).
 - 4 SEE DETAIL EA FOR GAUGE PLACEMENT.
 - 3 MOUNT SWITCH SO WHEN ACTUATOR IS PUSHED LEFT, THE LETTER L IS SHOWING.
 - 2 CONNECT TO MATING LABELED CONNECTOR ON CHASSIS SUPPLIED WIRING.
 - 1 CONNECT POSITIVE WIRE TO TERMINAL MARKED WITH A "RED", YEL-WINNEBAGO WIRING

- 60J AIR LEVELING - SUSPENSION
- 60M HYDRAULIC LEVEL JACKS-AUTO
- 15D INFOTAINMENT CENTER/GPS
- 265 CODES/STANDARDS-CSA/CMVSS
- 1B1 CODES/STANDARDS USA

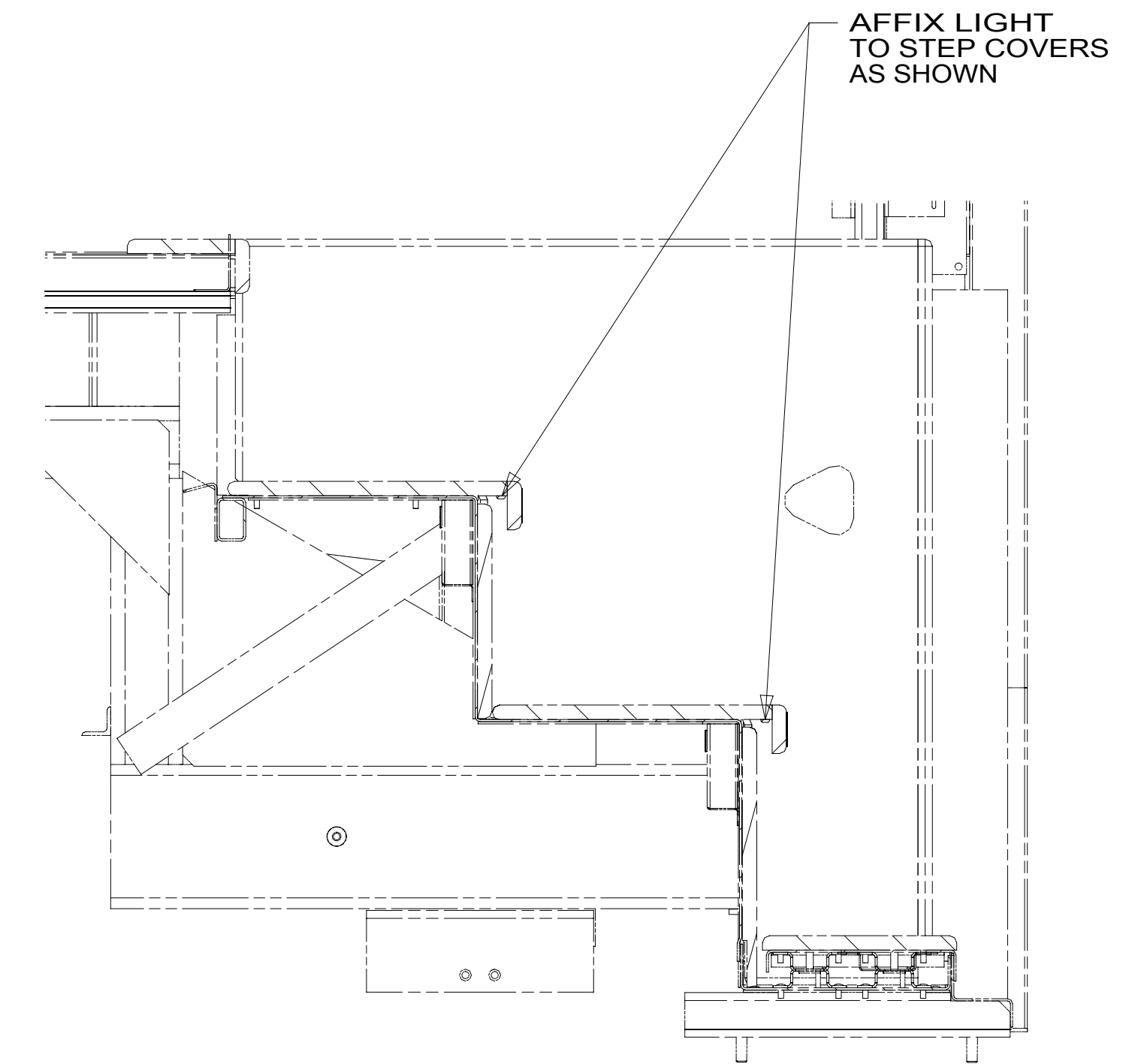
FOR ELECTRICAL TORQUE SPECIFICATIONS SEE DWG NO. 128783-01-000

X-X FOR ELECTRICAL CALLOUTS SEE DWG NO. 121339-01-000

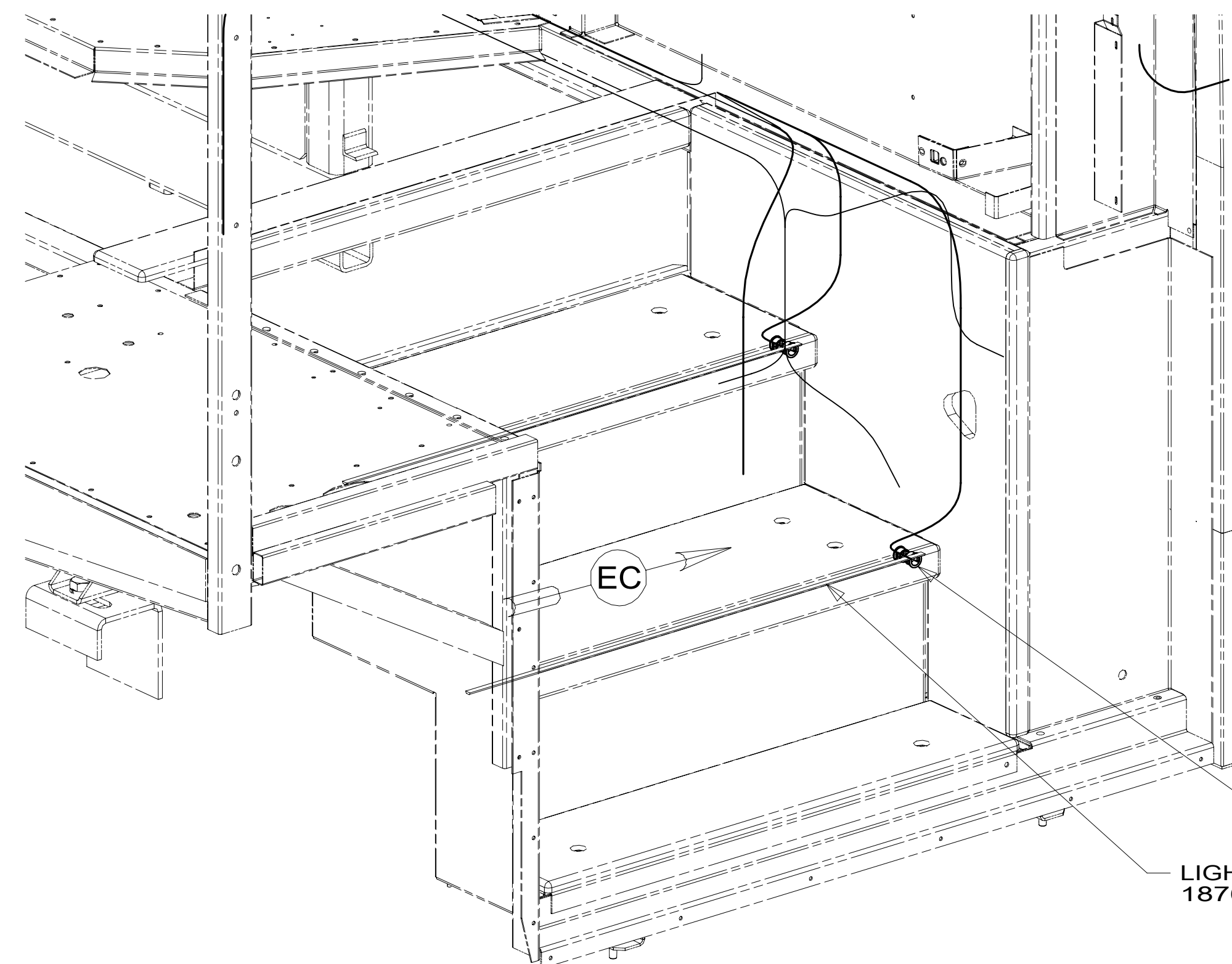
DESCRIPTION:	1B1 265	
WIRING INSTL-FRONT END		
SHEET:	ITEM/PART NO:	REV
4 OF 9	000182954 / 30266901000	



DETAIL EA ¹



VIEW EC



GROMMET
114208-02-000 (4)

LIGHT-TAPE,LED
187693-14-CHT (2)

DETAIL EB

¹ ALL STANDARD GAUGES, RETAINER CLIPS AND FASTENERS ARE CHASSIS SUPPLIED.

NOTES:

FOR ELECTRICAL TORQUE SPECIFICATIONS SEE DWG NO. 128783-01-000

FOR ELECTRICAL CALLOUTS SEE DWG NO. 121339-01-000

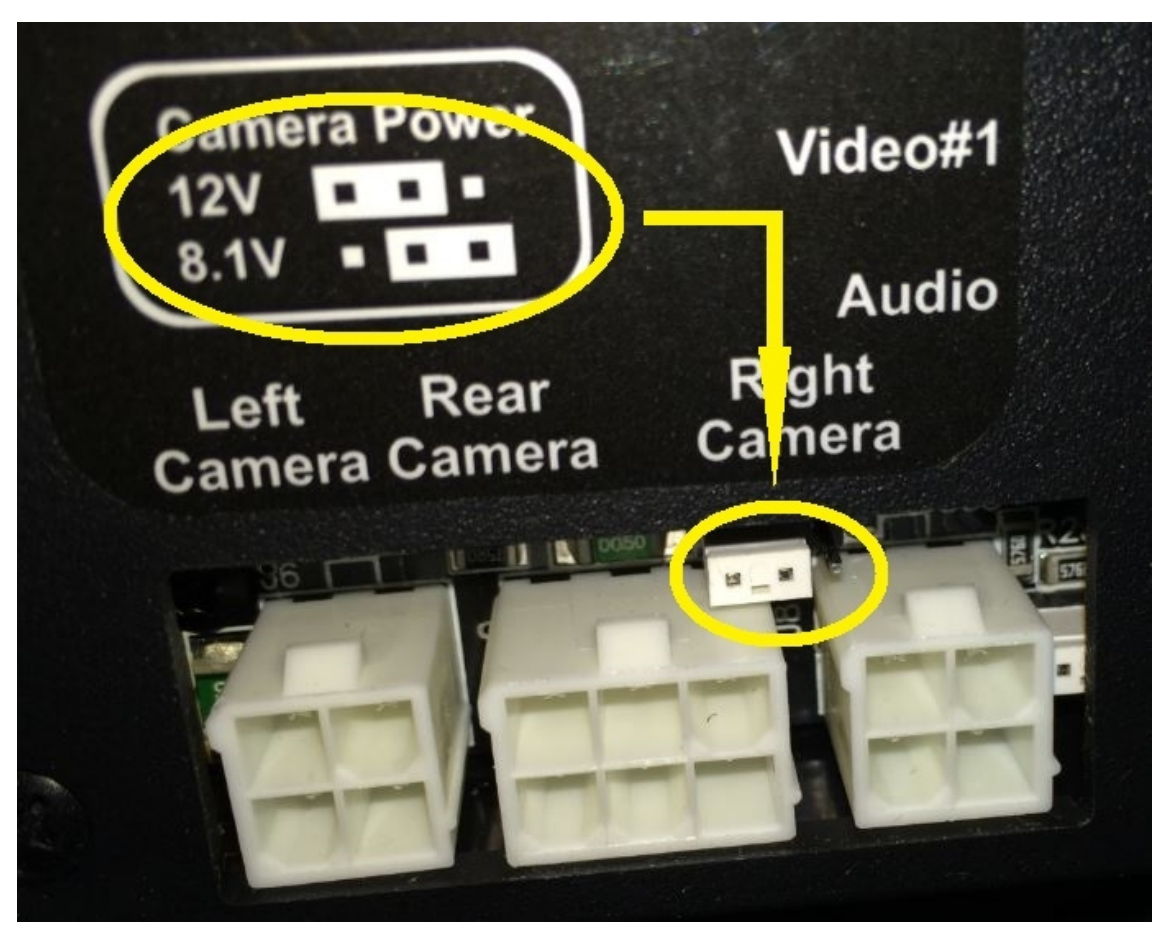
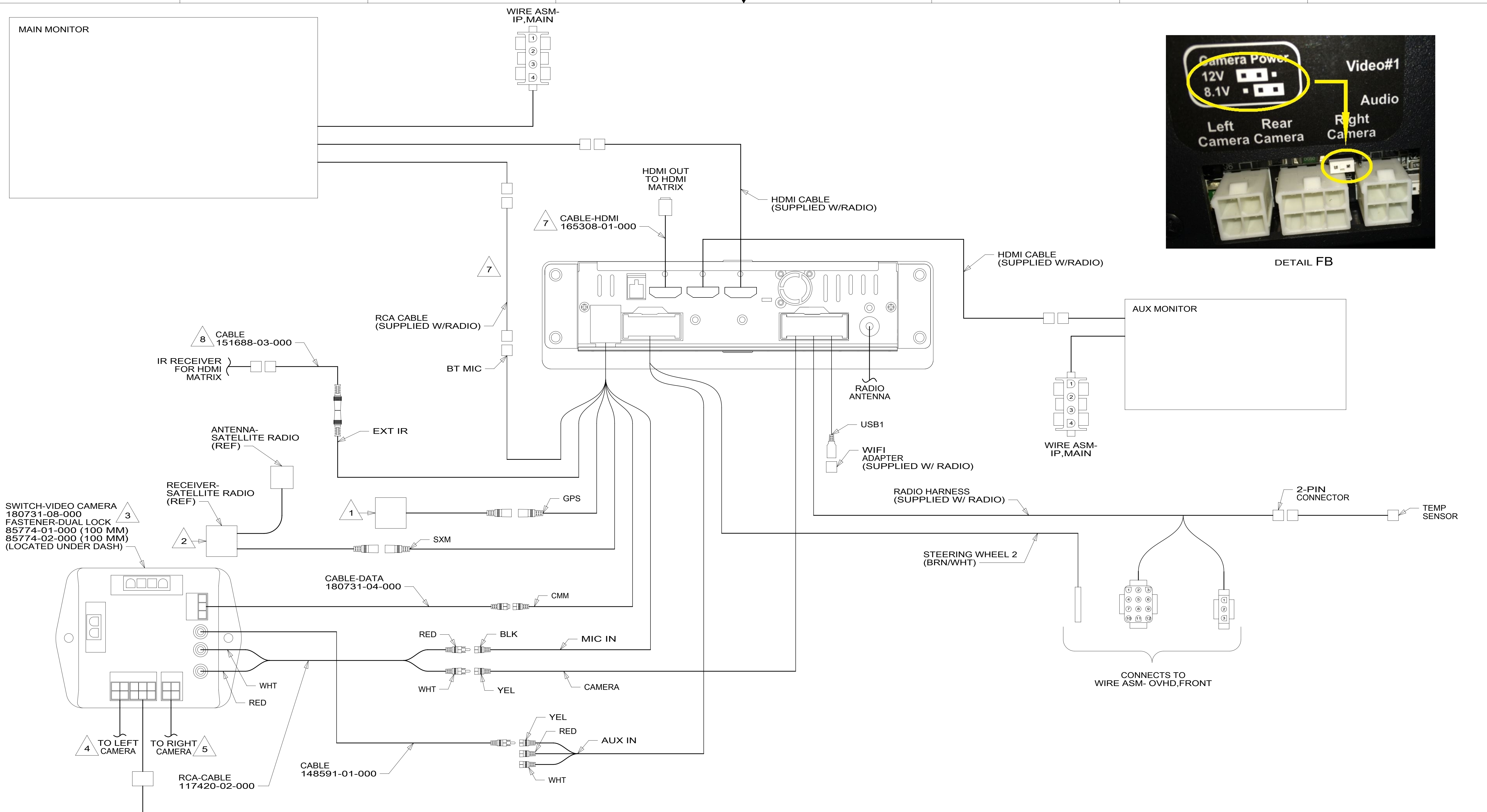
265 CODES/STANDARDS-CSA/CMVSS

1B1 CODES/STANDARDS USA

1B1 265

DESCRIPTION:
WIRING INSTL-FRONT END

SHEET: 5 OF 9	ITEM/PART NO: 000182954 / 30266901000	REV
------------------	--	-----



- NOTES:**
- 3 ENSURE CAMERA POWER JUMPER IS IN 12 VOLT POSITION. MOVE TO 12 VOLT POSITION IF NECESSARY. SEE DEAL HB.
 - 2 WIRE TIE RECEIVER-SATELLITE RADIO AND SWITCH-VIDEO CAMERA TO DASH RADIO WIRING BEHIND THE RADIO.
 - 1 MOUNT ON TOP OF CABINET ABOVE RADIO.

- 8 INSTALL IN MHP.
- 7 ROUTE DOWN LEFT A-POST.
- 6 APPLY TAPE 8363-01-000 AS NECESSARY TO SECURE NON-LOCKING CONNECTIONS.
- 5 MARK RIGHT CABLE WITH WHITE TAPE 900000-08-000 NEXT TO CONNECTOR.
- 4 MARK LEFT CABLE WITH YELLOW TAPE 900000-07-000 NEXT TO CONNECTOR.

FOR ELECTRICAL TORQUE SPECIFICATIONS SEE DWG NO. 128783-01-000

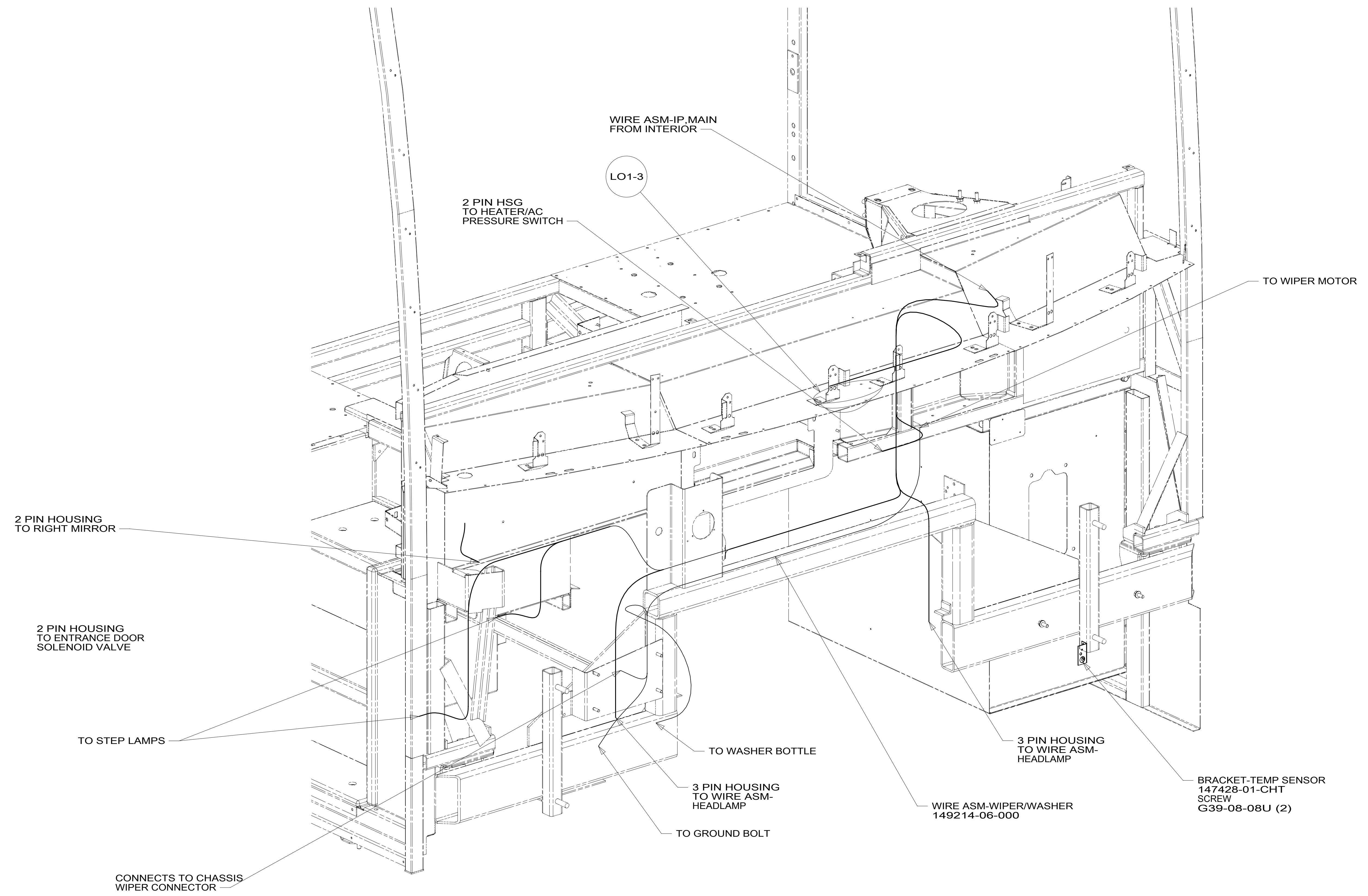
FOR ELECTRICAL CALLOUTS SEE DWG NO. 121339-01-000

- 19V RADIO-AM/FM STEREO CD PLAYER
- 74L VIDEO CAMERA SYS W/COLOR MON
- 265 CODES/STANDARDS-CSA/CMVSS
- 1B1 CODES/STANDARDS USA

DESCRIPTION:		
WIRING INSTL-FRONT END		
SHEET:	ITEM/PART NO.:	REV:
6 OF 9	000182954 / 30266901000	

8 7 6 5 4 3 2 1

D
C
B
A



VIEW GA

265 CODES/STANDARDS-CSA/CMVSS
 1B1 CODES/STANDARDS USA

FOR ELECTRICAL TORQUE SPECIFICATIONS SEE DWG NO. 128783-01-000

X-X FOR ELECTRICAL CALLOUTS SEE DWG NO. 121339-01-000

DESCRIPTION: WIRING INSTL-FRONT END		
SHEET: 7 OF 9	ITEM/PART NO: 000182954 / 30266901000	REV

8 7 6 5 4 3 2 1 19-Jan-2017

8 7 6 5 4 3 2 1

D
C
B
A

D
C
B
A

3
ANTENNA-RADIO
90944-02-000
CABLE ASM-ANTENNA
90944-03-000
EXTENSION
109889-01-000

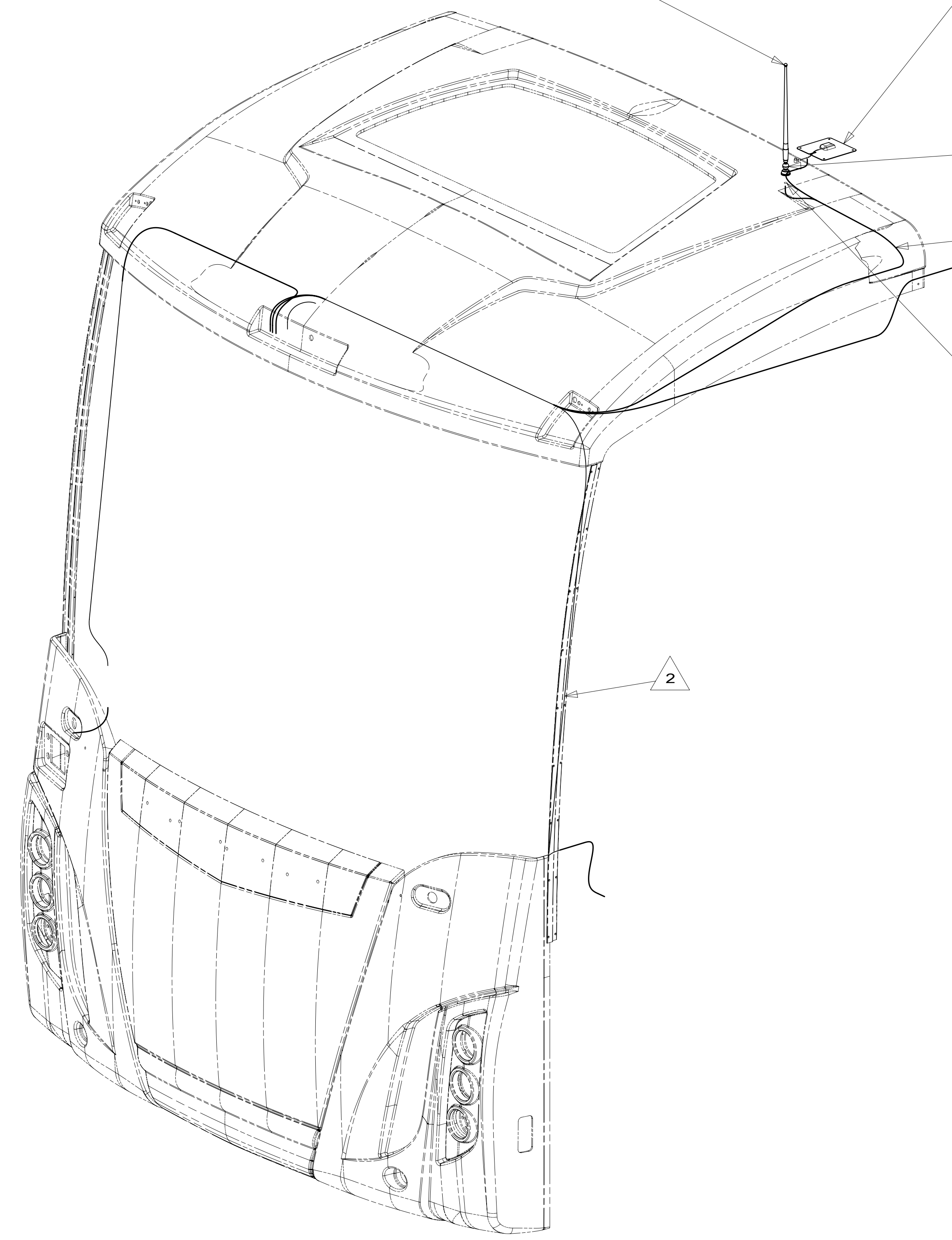
ANTENNA-SATELLITE RADIO
181908-02-000
PLATE-SATELLITE RADIO
177256-03-CHT
SCREW
G11-08-08U (4)
SEAL
70C 1 4

RADIO ANTENNA
LOCATION WITH
SKYLIGHT

CABLE-SATELLITE RADIO
(SUPPLIED WITH ANTENNA)

RADIO ANTENNA
LOCATION WITHOUT
SKYLIGHT

2



- NOTES:
- 4 LOCATED ON ROOF ASM WITH SKYLIGHT OPTION,
LOCATED ON ROOF CAP WITHOUT SKYLIGHT.
 - 3 SEAL AROUND ANTENNA BASE.
 - 2 ROUTE CABLE ALONG A-POST, UNDER TRIM COVER.
 - 1 MOUNT ANTENNA SUCH THAT BASE IS SQUARE W/REAR
OF ROOF CAP & HOLE IS DIRECTLY OVER HOLE IN
FIBERGLASS. SEAL HOLE IN ROOF CAP, BASE AT SCREWS.

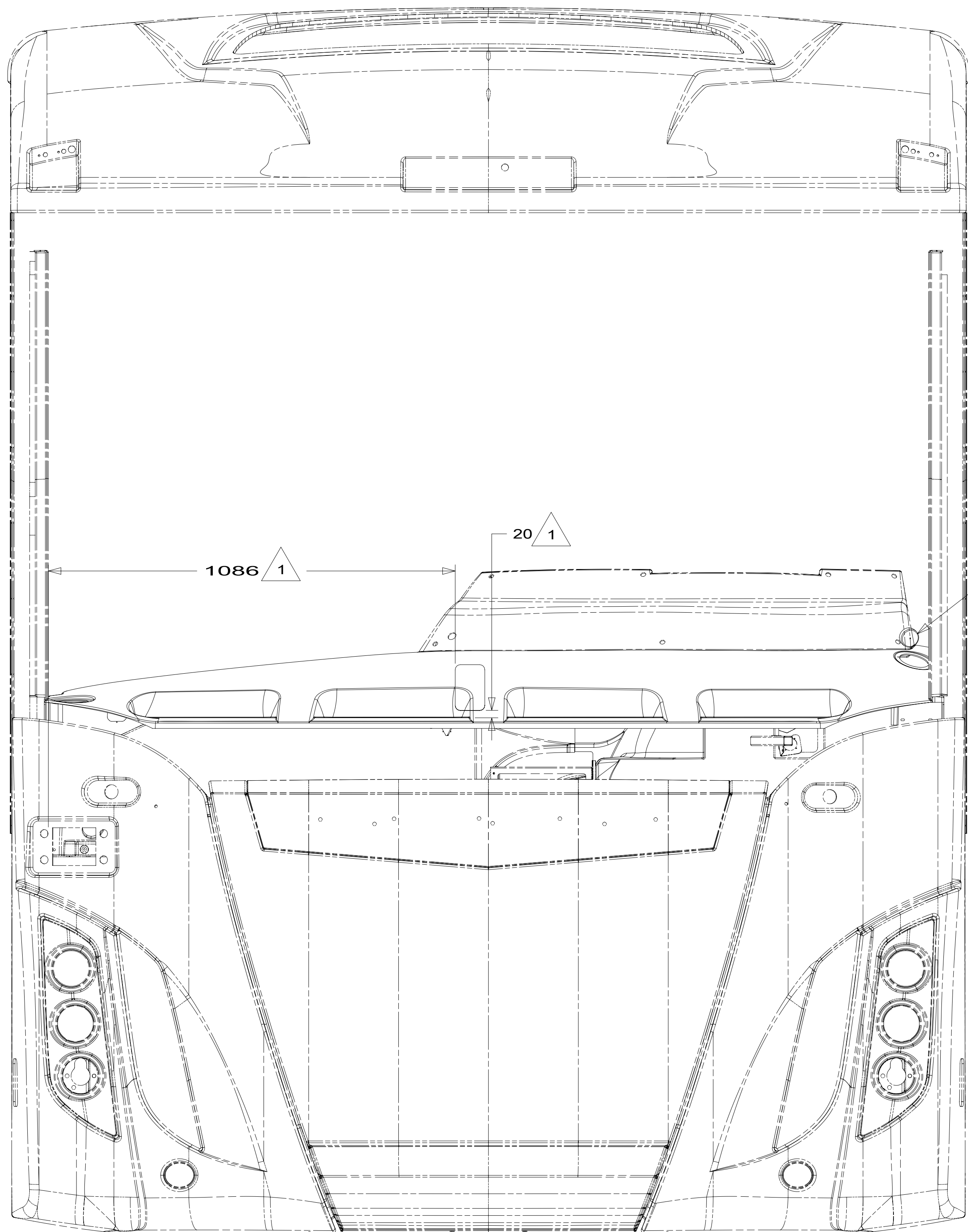
- 70C RADIO - SATELLITE
- 265 CODES/STANDARDS-CSA/CMVSS
- 1B1 CODES/STANDARDS USA

FOR ELECTRICAL
TORQUE
SPECIFICATIONS
SEE DWG NO.
128783-01-000

FOR ELECTRICAL
CALLOUTS
SEE DWG NO.
121339-01-000

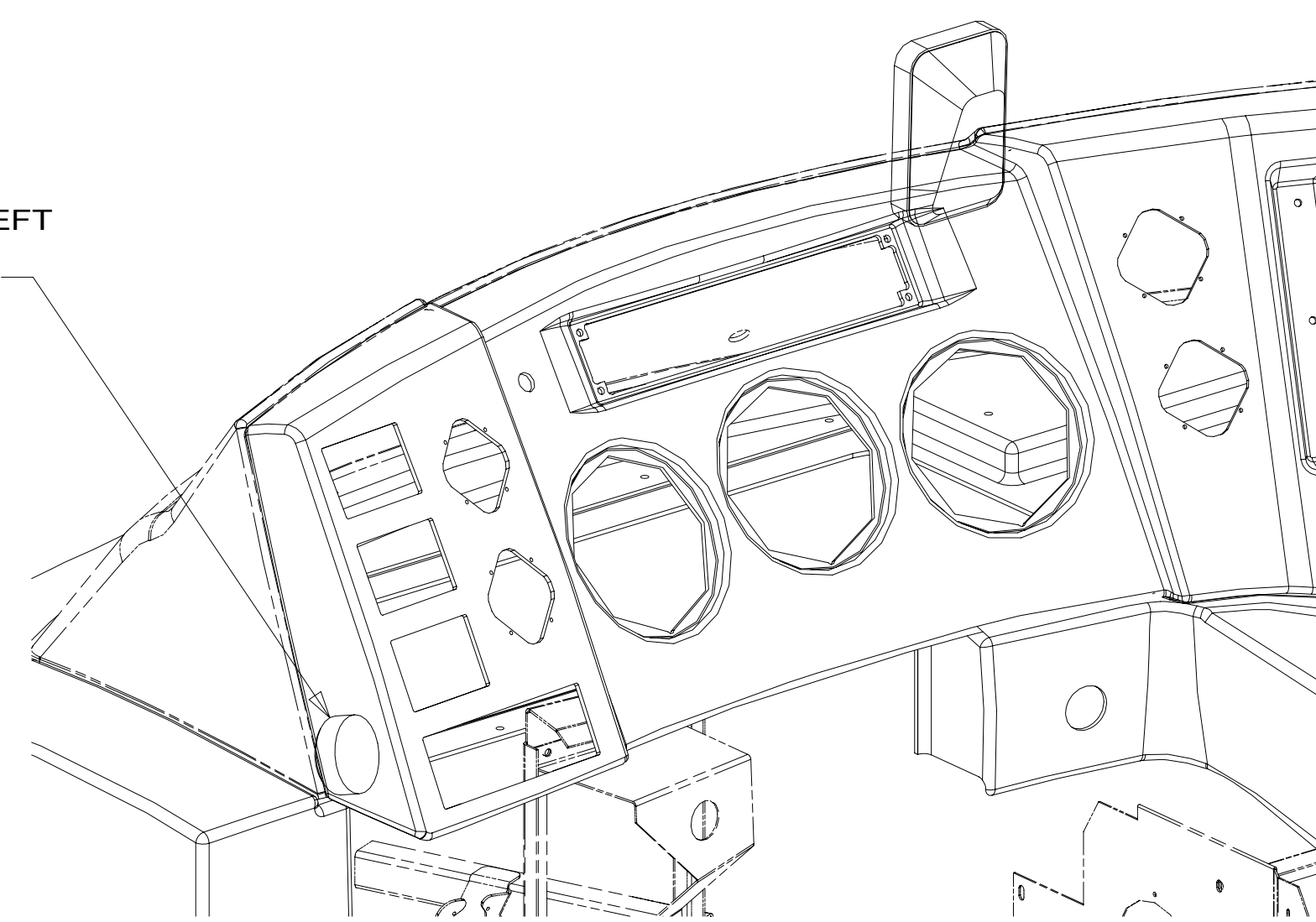
DESCRIPTION: WIRING INSTL-FRONT END	
SHEET: 8 OF 9	ITEM/PART NO: 000182954 / 30266901000
REV	19-Jan-2017

8 7 6 5 4 3 2 1



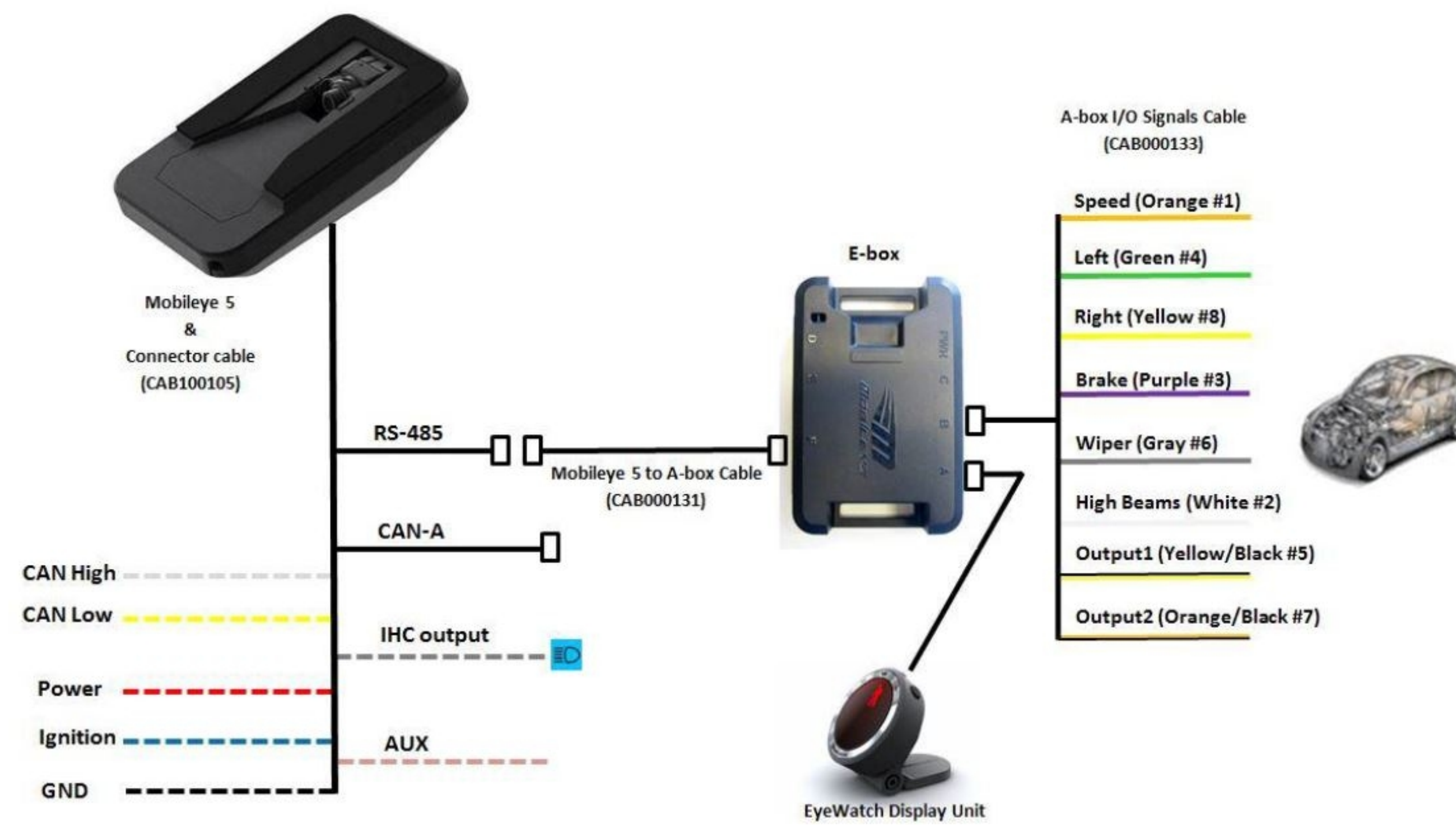
DETAIL JA

MOUNT ON TOP OF DASH POD LEFT OF CLUSTER. ROUTE CABLE IN SEAM UNDER REMOVEABLE TOP.



DETAIL JB

DETAIL JB



MOBILEYE CONNECTION DIAGRAM

1 ALL DIMENSIONS FROM BLACK LINE IN WINDSHIELD REF DIMENSION: CAMERA TO BE MOUNTED 50 MM RIGHT OF CENTER OF COACH AND 30 MM ABOVE DASH AT WINDSHIELD.

NOTES:

265 CODES/STANDARDS-CSA/CMVSS

1B1 CODES/STANDARDS USA

FOR ELECTRICAL TORQUE SPECIFICATIONS SEE DWG NO. 128783-01-000

X-X FOR ELECTRICAL CALLOUTS SEE DWG NO. 121339-01-000

1B1 265

DESCRIPTION: WIRING INSTL-FRONT END

SHEET: 9 OF 9 ITEM/PART NO: 000182954 / 30266901000 REV