

WIRE ASM-MAIN  
HOLDING TANK  
151317-03-000

WIRE ASM-AUX  
HOLDING TANK  
151316-03-000

4 TO TANK HEATER PADS WITH 23R  
OR 23T

3 WIRE PASSES THROUGH FLOOR IN THIS AREA.

2. ROUTE TANK SENSOR WIRES SO THEY DO NOT PASSOVER SENSORS. USE WIRE TIE MOUNT 155366-01-000 AND WIRE TIE 8343-01-000 AS NEEDED. TANK SURFACE MUST BE CLEANED USING ISOPROPYL ALCOHOL AND PRIMED WITH PRIMER 94.

1. AT MINIMUM ALL WIRES TO BE SUPPORTED AND SECURED PER CODE REQUIREMENTS. USE CLAMP 10495 OR 10497 OR WIRE TIE 8343 OR 108046 AND SCREW G67-XX-XXX OR G56-XX-XXX AS APPROPRIATE FOR INSTALLATION.

NOTES:

- 23R DRAINAGE SYSTEM/HEAT-PREWIRE
- 23T DRAINAGE SYSTEM-HEATED
- 265 CODES/STANDARDS-CSA/CMVSS
- 1B1 CODES/STANDARDS USA

1B1 265



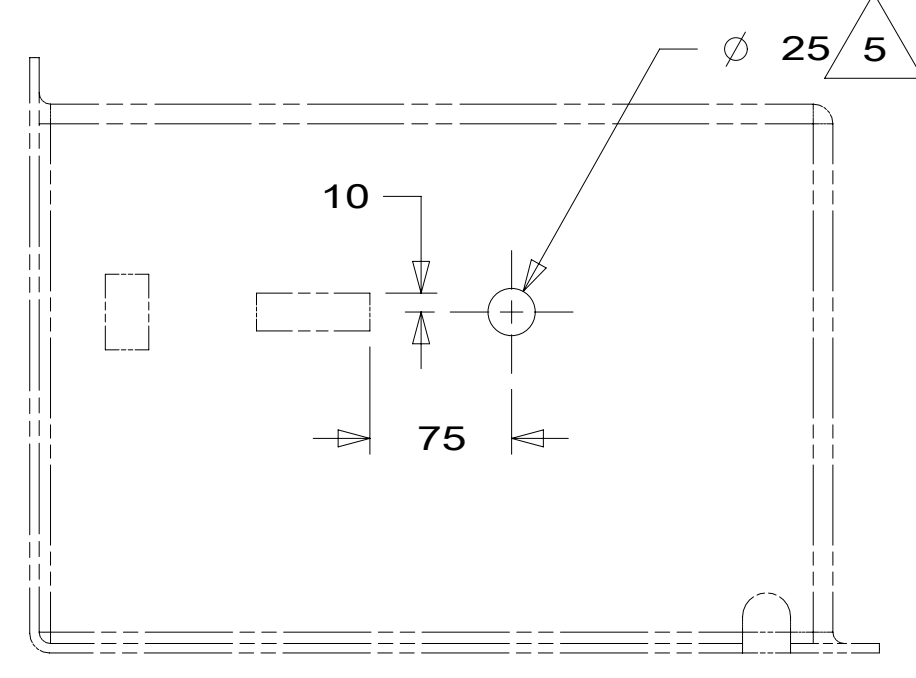
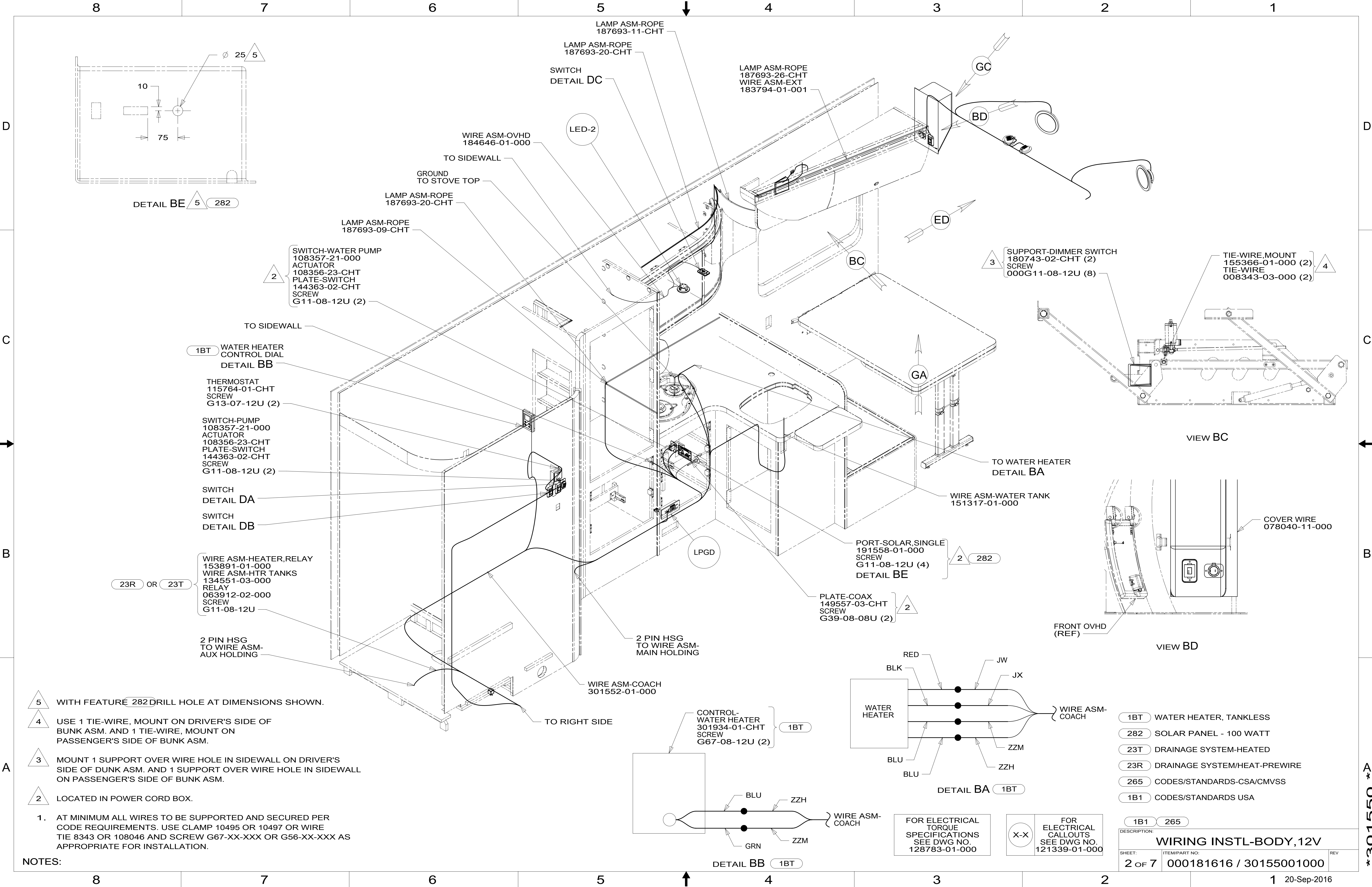
DSNR:		ALL DIMENSIONS ARE IN MILLIMETERS	
DIFTR:		MATERIAL:	
UNSPECIFIED TOLERANCES:			
WHOLE DIM (X)	3		
ONE-PLACE (X.X)	1.5		
TWO-PLACE (X.XX)	0.50		
ANGLE	1°		
REFER TO ES0018 FOR FASTENER TIGHTENING GUIDELINES		WEIGHT: (LBS)	FIRST USED:

FOR ELECTRICAL TORQUE SPECIFICATIONS SEE DWG NO. 128783-01-000

FOR ELECTRICAL CALLOUTS SEE DWG NO. 121339-01-000

**WIRING INSTL-BODY, 12V**

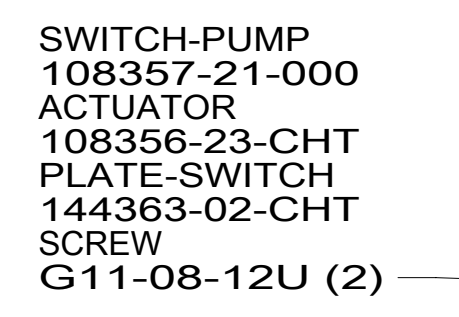
SHEET:	ITEM/PART NO.:	REV:
1 OF 7	000181616 / 30155001000	
REF:		



DETAIL BE 5 282



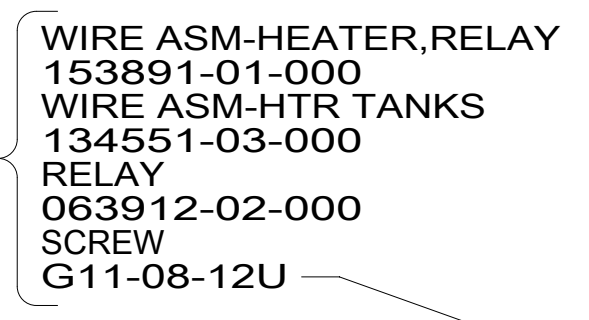
1BT WATER HEATER CONTROL DIAL DETAIL BB



SWITCH-PUMP 108357-21-000 ACTUATOR 108356-23-CHT PLATE-SWITCH 144363-02-CHT SCREW G11-08-12U (2)

SWITCH DETAIL DA

SWITCH DETAIL DB

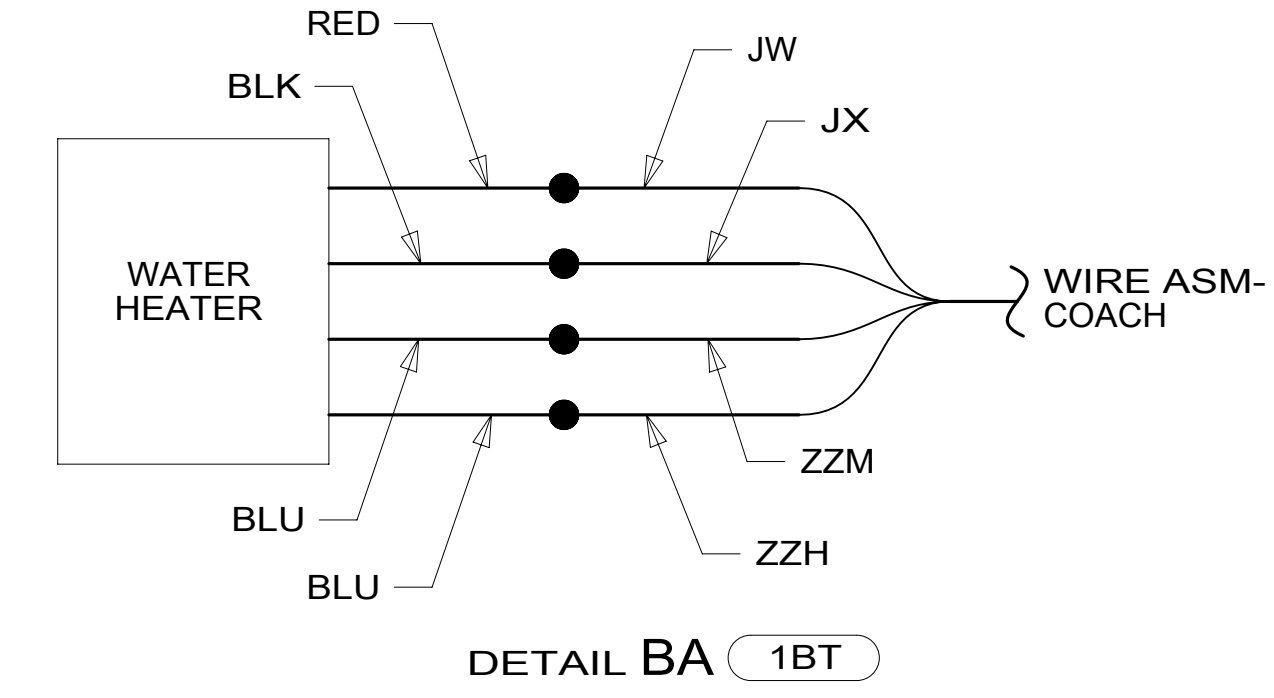
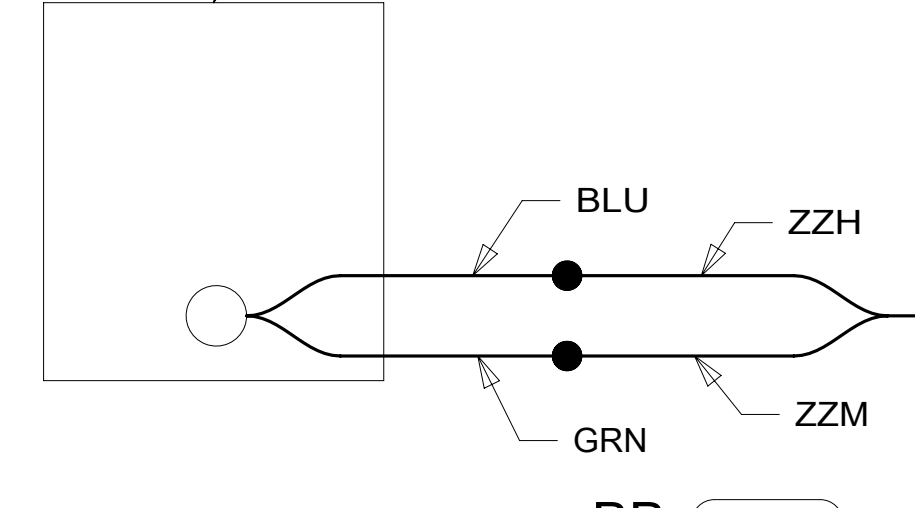
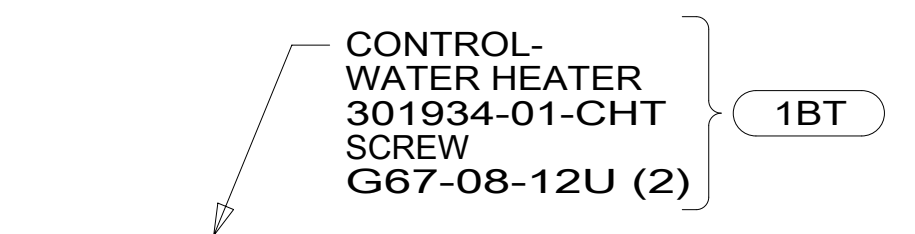


23R OR 23T

2 PIN HSG TO WIRE ASM-AUX HOLDING

WIRE ASM-COACH 301552-01-000

TO RIGHT SIDE



FOR ELECTRICAL TORQUE SPECIFICATIONS SEE DWG NO. 128783-01-000

FOR ELECTRICAL CALLOUTS SEE DWG NO. 121339-01-000

- 1BT WATER HEATER, TANKLESS
- 282 SOLAR PANEL - 100 WATT
- 23T DRAINAGE SYSTEM-HEATED
- 23R DRAINAGE SYSTEM/HEAT-PREWIRE
- 265 CODES/STANDARDS-CSA/CMVSS
- 1B1 CODES/STANDARDS USA

1B1 265	
DESCRIPTION: WIRING INSTL-BODY, 12V	
SHEET: 2 OF 7	ITEMPART NO: 000181616 / 30155001000
REV: 1 20-Sep-2016	

- 5 WITH FEATURE 282 DRILL HOLE AT DIMENSIONS SHOWN.
- 4 USE 1 TIE-WIRE, MOUNT ON DRIVER'S SIDE OF BUNK ASM. AND 1 TIE-WIRE, MOUNT ON PASSENGER'S SIDE OF BUNK ASM.
- 3 MOUNT 1 SUPPORT OVER WIRE HOLE IN SIDEWALL ON DRIVER'S SIDE OF DUNK ASM. AND 1 SUPPORT OVER WIRE HOLE IN SIDEWALL ON PASSENGER'S SIDE OF BUNK ASM.
- 2 LOCATED IN POWER CORD BOX.

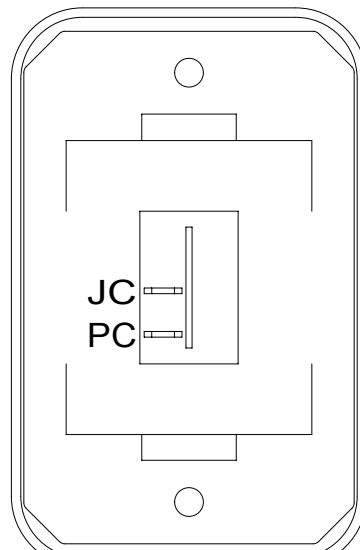
1. AT MINIMUM ALL WIRES TO BE SUPPORTED AND SECURED PER CODE REQUIREMENTS. USE CLAMP 10495 OR 10497 OR WIRE TIE 8343 OR 108046 AND SCREW G67-XX-XXX OR G56-XX-XXX AS APPROPRIATE FOR INSTALLATION.

NOTES:

\*301550\*

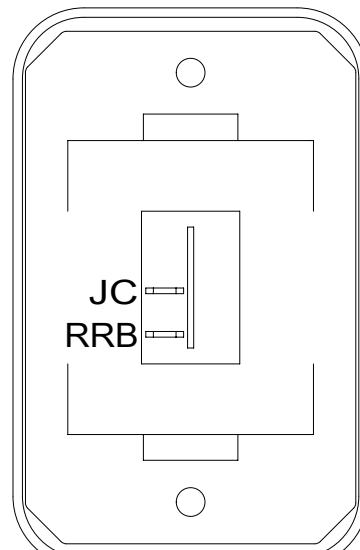






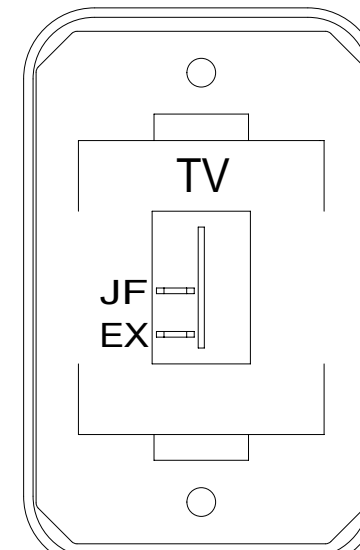
SWITCH-ROCKER  
135740-01-CHT  
SWITCH-BASE  
135741-01-CHT  
SWITCH-BEZEL  
135742-01-CHT  
SCREW  
G11-08-08U (2)

DETAIL DA



SWITCH-ROCKER  
135740-01-CHT  
SWITCH-BASE  
135741-01-CHT  
SWITCH-BEZEL  
135742-01-CHT  
SCREW  
G11-08-08U (2)

DETAIL DE



SWITCH-ROCKER  
135740-01-CHT  
SWITCH-BASE  
135741-01-CHT  
SWITCH-BEZEL  
135742-45-CHT  
SCREW  
G11-08-08U (2)

DETAIL DJ

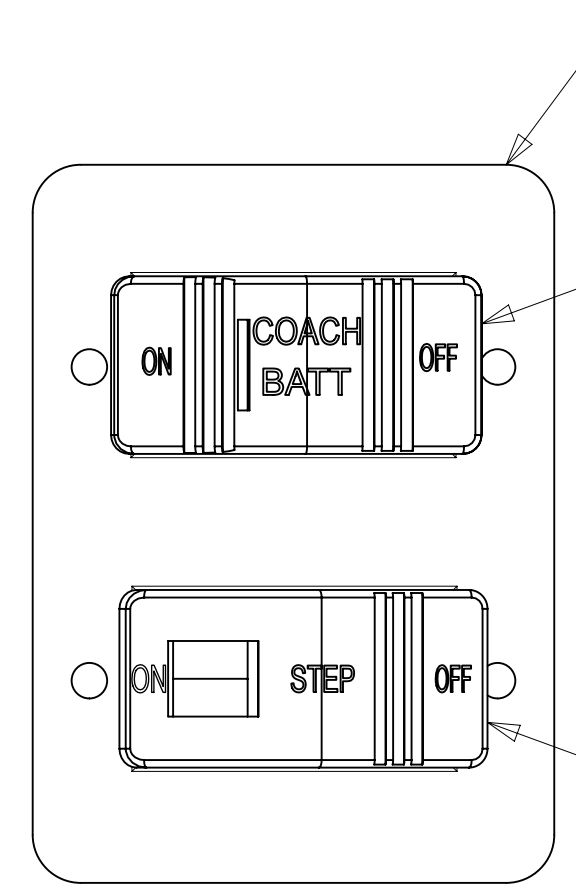
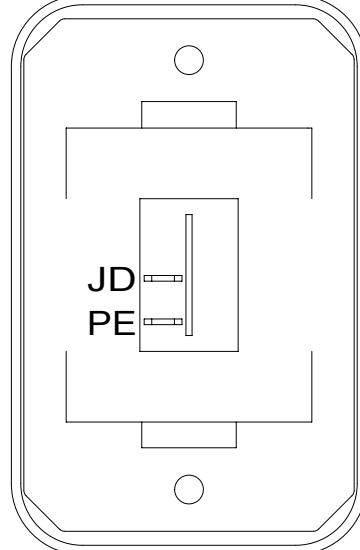


PLATE  
158431-17-CHT  
SCREW  
G11-06-10U (4)

SWITCH-BATTERY  
108357-18-000  
ACTUATOR  
108356-19-CHT  
(CIRCUITS LH,LJ  
LG,NE,JE)  
WIRE ASM-THERM  
186796-01-000

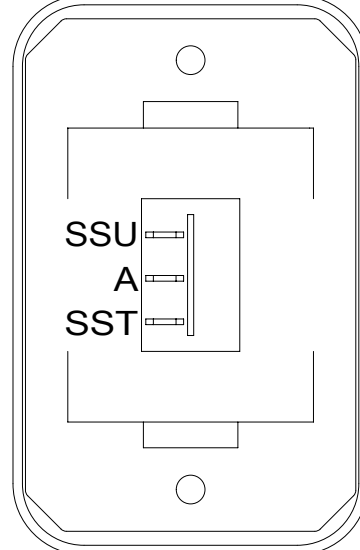
SWITCH-STEP  
108357-19-000  
(CIRCUITS ER,ES)

DETAIL DN



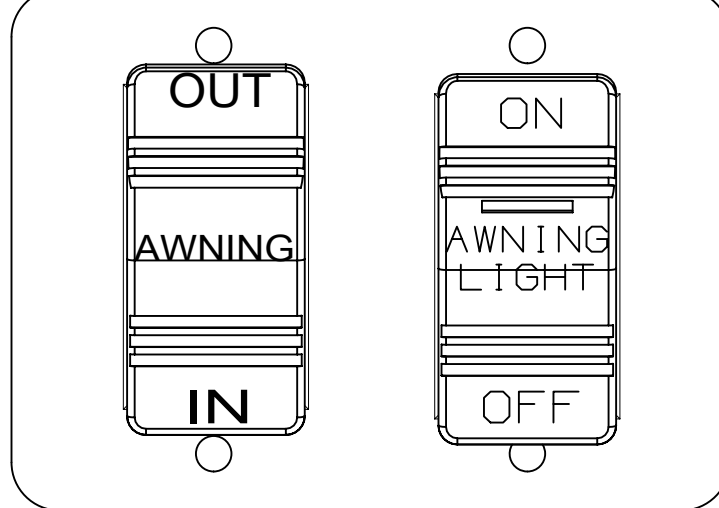
SWITCH-ROCKER  
135740-01-CHT  
SWITCH-BASE  
135741-01-CHT  
SWITCH-BEZEL  
135742-01-CHT  
SCREW  
G11-08-08U (2)

DETAIL DB



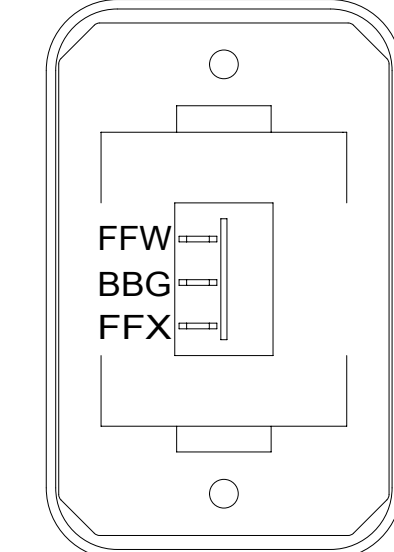
SWITCH-ROCKER  
135740-02-CHT  
SWITCH-BASE  
135741-01-CHT  
SWITCH-BEZEL  
135742-01-CHT  
SCREW  
G11-08-08U (2)

DETAIL DF



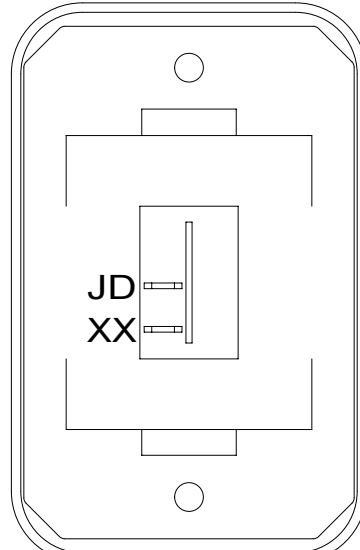
SWITCH-AWNING  
108357-06-000  
ACTUATOR  
108356-12-000  
SWITCH-AWNING LIGHT  
108357-14-000  
ACTUATOR  
108356-28-CHT  
PLATE  
158431-17-CHT  
SCREW  
G11-08-10U (2)

DETAIL DK



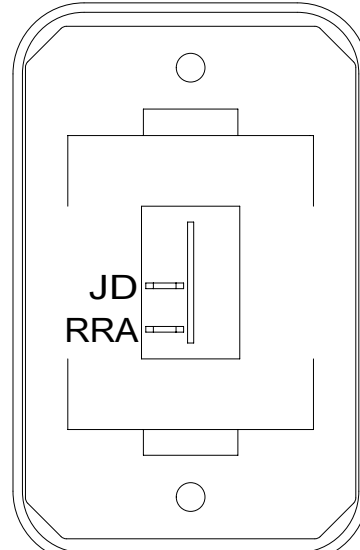
SWITCH-ROCKER  
135740-02-CHT  
SWITCH-BASE  
135741-01-CHT  
SWITCH-BEZEL  
135742-01-CHT  
SCREW  
G11-08-08U (2)

DETAIL DP



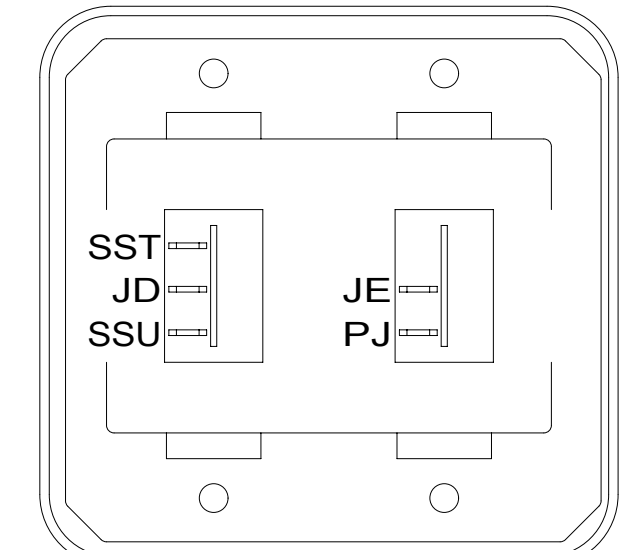
SWITCH-ROCKER  
135740-01-CHT  
SWITCH-BASE  
135741-01-CHT  
SWITCH-BEZEL  
135742-01-CHT  
SCREW  
G11-08-08U (2)

DETAIL DC



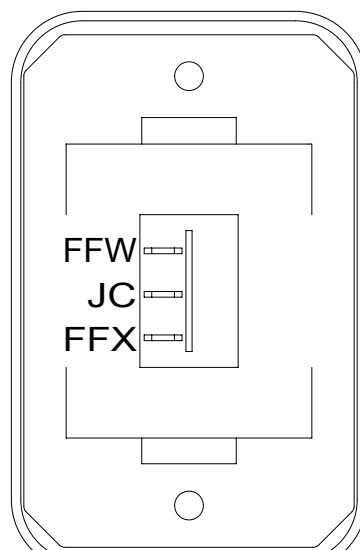
SWITCH-ROCKER  
135740-01-CHT  
SWITCH-BASE  
135741-01-CHT  
SWITCH-BEZEL  
135742-01-CHT  
SCREW  
G11-08-08U (2)

DETAIL DG



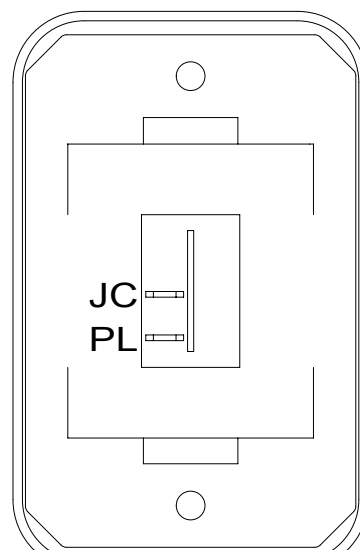
SWITCH-ROCKER  
135740-01-CHT  
135740-02-CHT  
SWITCH-BASE  
135741-02-CHT  
SWITCH-BEZEL  
135742-02-CHT  
SCREW  
G11-08-08U (4)

DETAIL DL



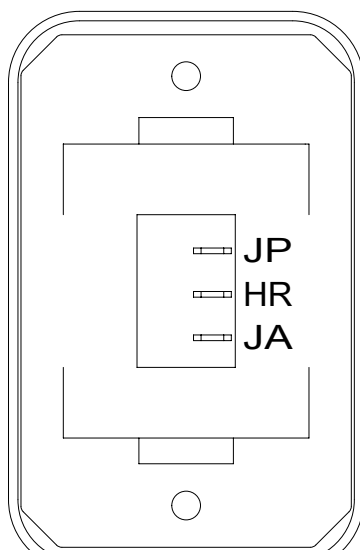
SWITCH-ROCKER  
135740-02-CHT  
SWITCH-BASE  
135741-01-CHT  
SWITCH-BEZEL  
135742-01-CHT  
SCREW  
G11-08-08U (2)

DETAIL DD



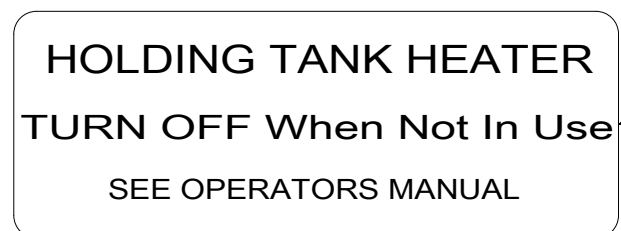
SWITCH-ROCKER  
135740-01-CHT  
SWITCH-BASE  
135741-01-CHT  
SWITCH-BEZEL  
135742-01-CHT  
SCREW  
G11-08-08U (2)

DETAIL DH



SWITCH-ROCKER  
135740-06-CHT  
SWITCH-BLANK  
138253-01-CHT  
SWITCH-BASE  
135741-01-CHT  
SWITCH-BEZEL  
135742-01-CHT  
SCREW  
G11-08-08U (2)

DETAIL DM



LABEL  
134563-01-CHT 23T OR 23R

FOR ELECTRICAL  
TORQUE  
SPECIFICATIONS  
SEE DWG NO.  
128783-01-000

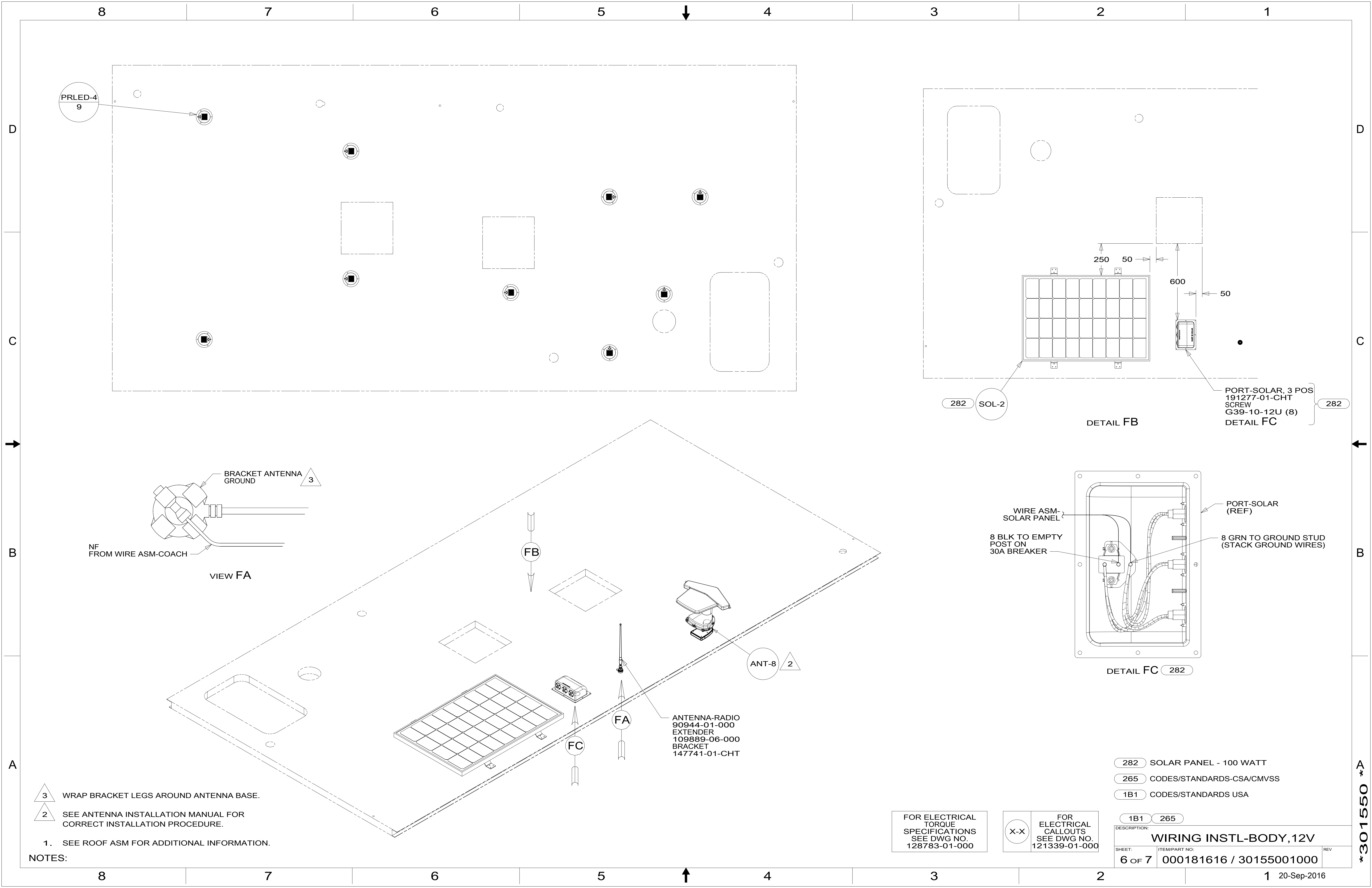
FOR  
ELECTRICAL  
CALLOUTS  
SEE DWG NO.  
121339-01-000

- 23R DRAINAGE SYSTEM/HEAT-PREWIRE
- 23T DRAINAGE SYSTEM-HEATED
- 265 CODES/STANDARDS-CSA/CMVSS
- 1B1 CODES/STANDARDS USA

DESCRIPTION: <b>WIRING INSTL-BODY, 12V</b>		
SHEET: 4 OF 7	ITEM/PART NO: 000181616 / 30155001000	REV

NOTES:  
1 WITHOUT 23T OR 23R

\*301550\*



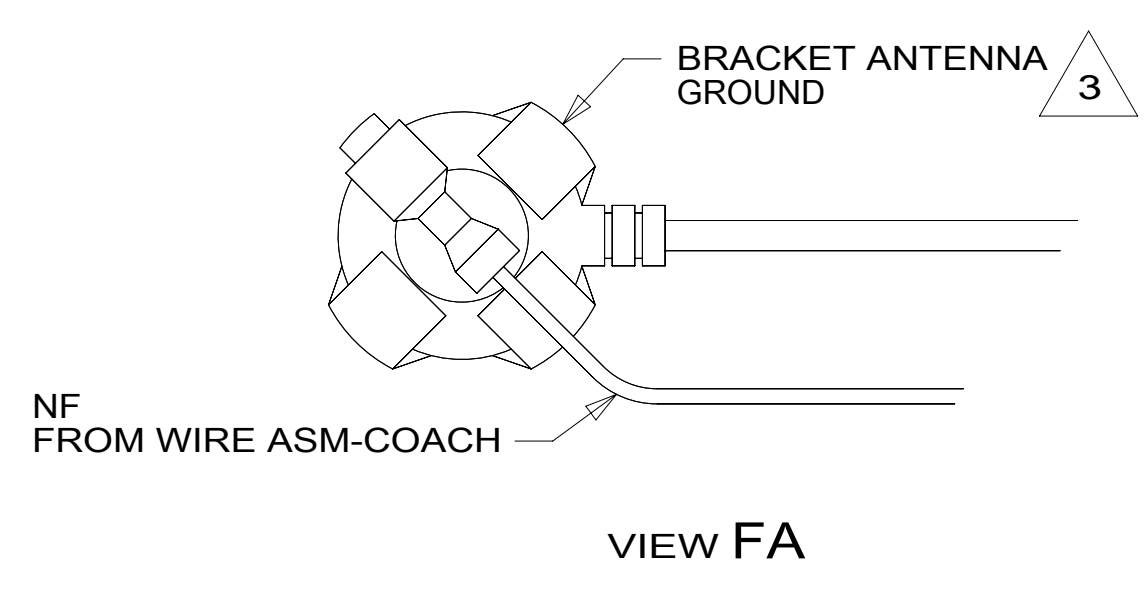
PRLED-4  
9

282 SOL-2

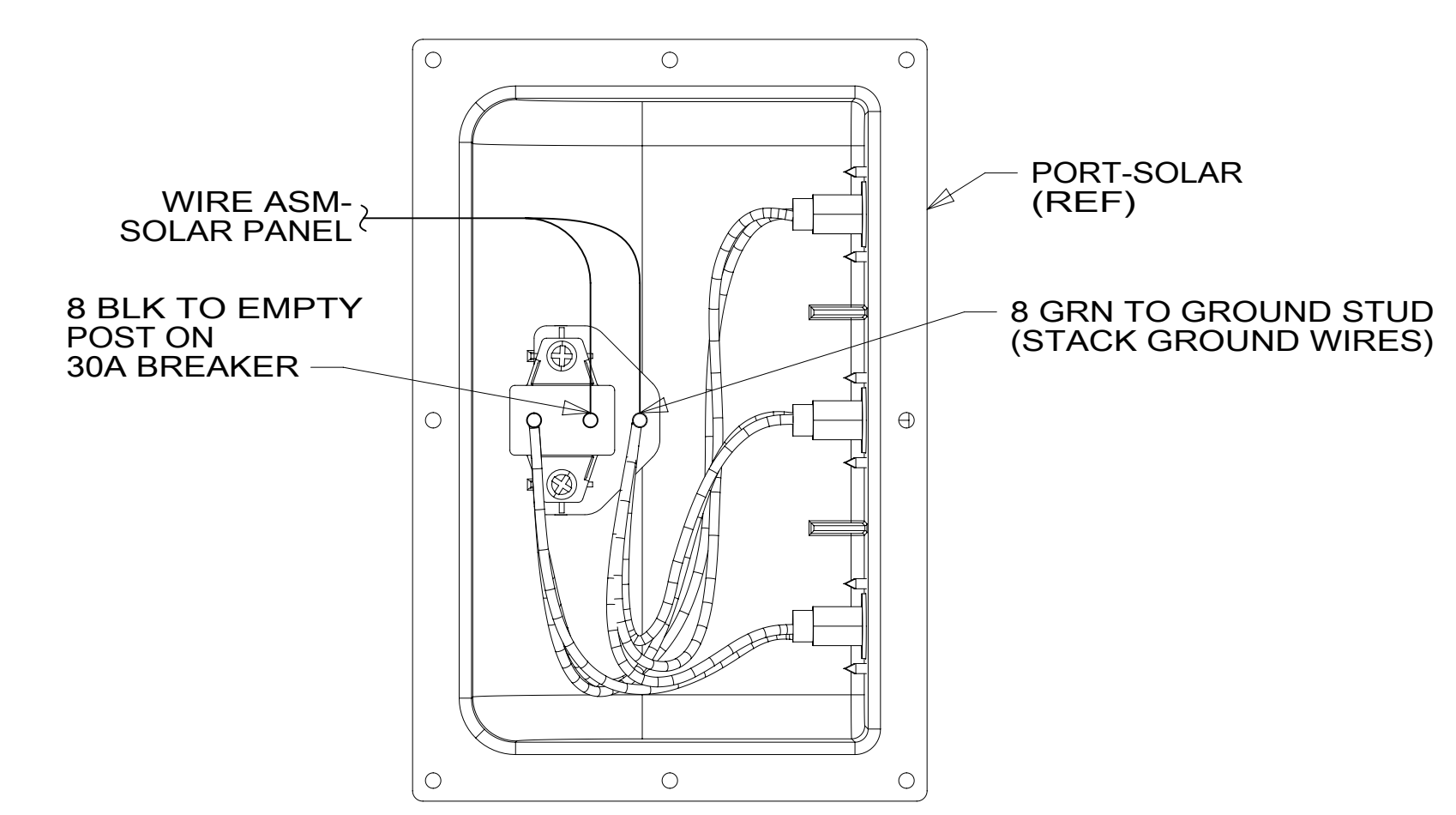
DETAIL FB

PORT-SOLAR, 3 POS  
191277-01-CHT  
SCREW  
G39-10-12U (8)  
DETAIL FC

282



VIEW FA



DETAIL FC 282

ANTENNA-RADIO  
90944-01-000  
EXTENDER  
109889-06-000  
BRACKET  
147741-01-CHT

- 3 WRAP BRACKET LEGS AROUND ANTENNA BASE.
- 2 SEE ANTENNA INSTALLATION MANUAL FOR CORRECT INSTALLATION PROCEDURE.

1. SEE ROOF ASM FOR ADDITIONAL INFORMATION.

NOTES:

FOR ELECTRICAL TORQUE SPECIFICATIONS SEE DWG NO. 128783-01-000

FOR ELECTRICAL CALLOUTS SEE DWG NO. 121339-01-000

- 282 SOLAR PANEL - 100 WATT
- 265 CODES/STANDARDS-CSA/CMVSS
- 1B1 CODES/STANDARDS USA

DESCRIPTION:		1B1 265	
<b>WIRING INSTL-BODY, 12V</b>			
SHEET:	ITEM/PART NO.:	REV	
6 OF 7	000181616 / 30155001000		

\*301550 \*A

8 7 6 5 4 3 2 1

D

D

C

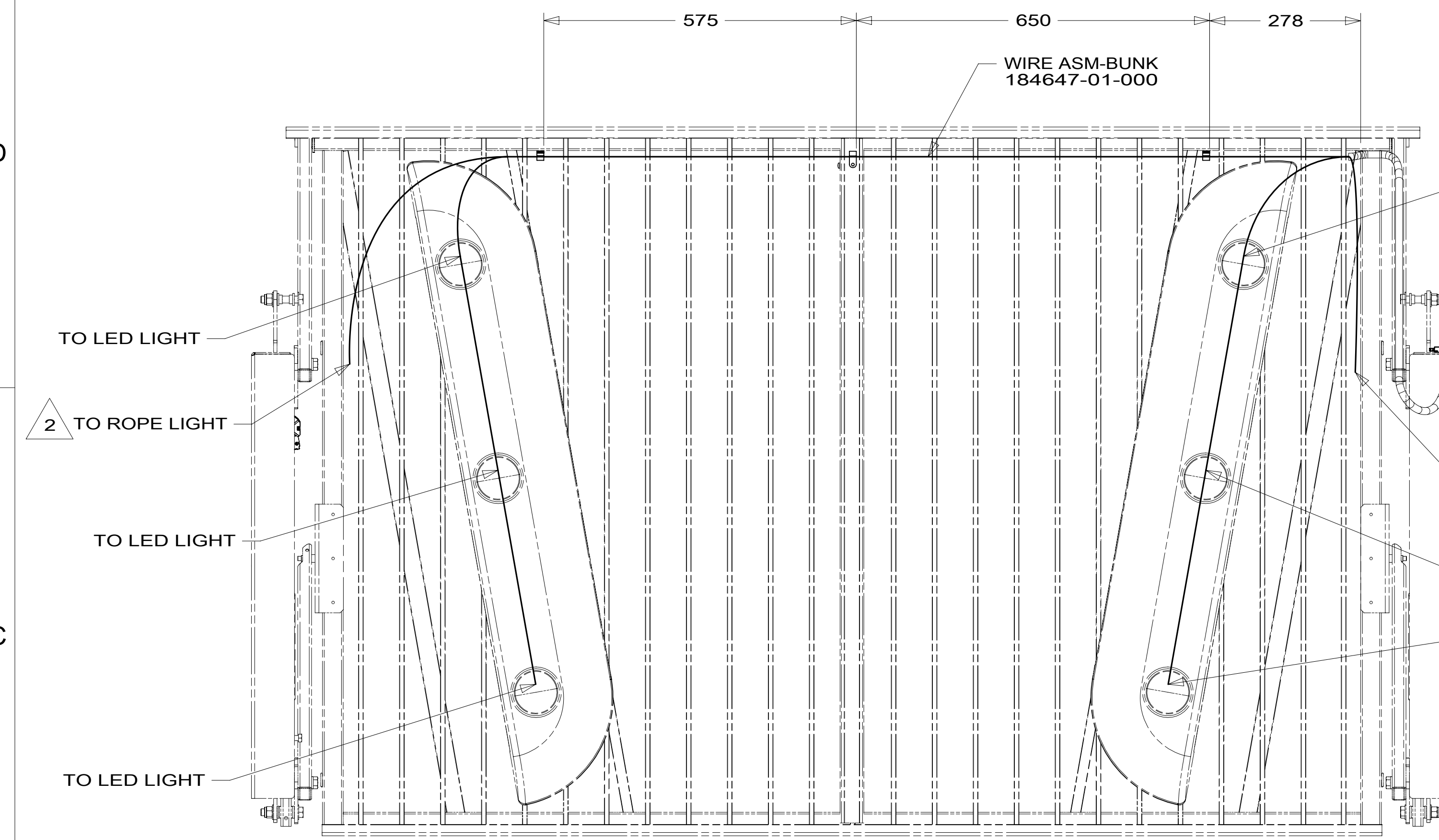
C

B

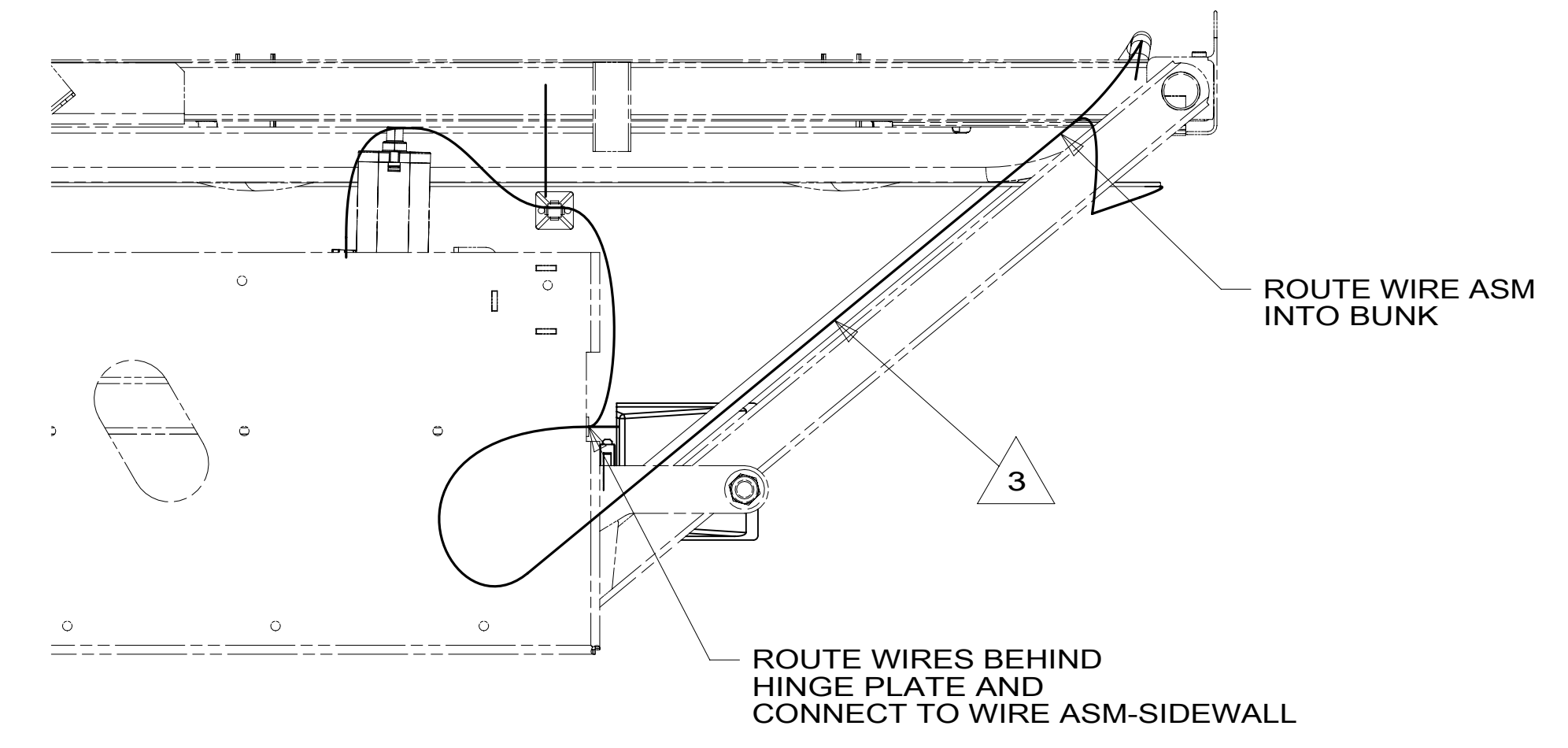
B

A

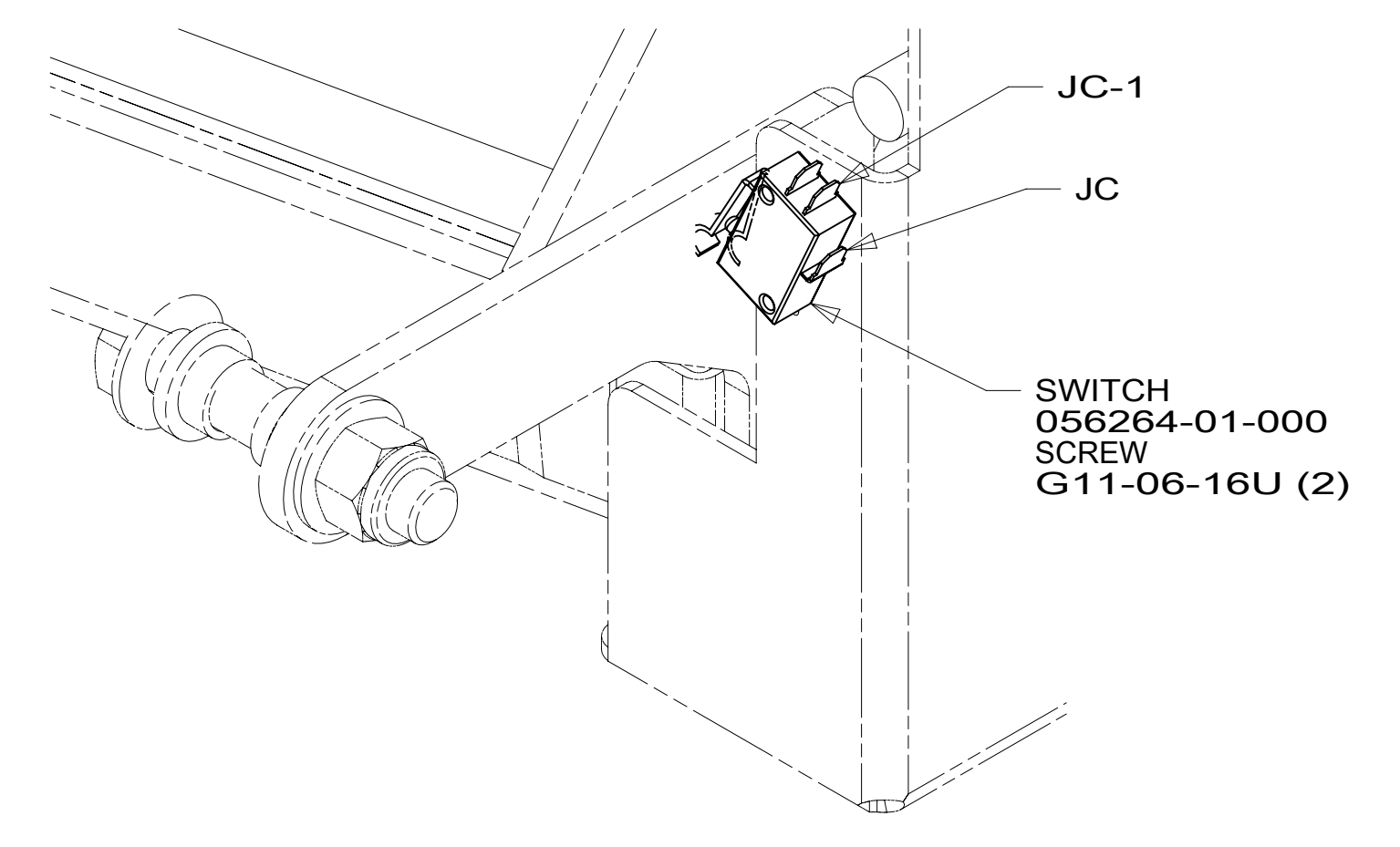
A



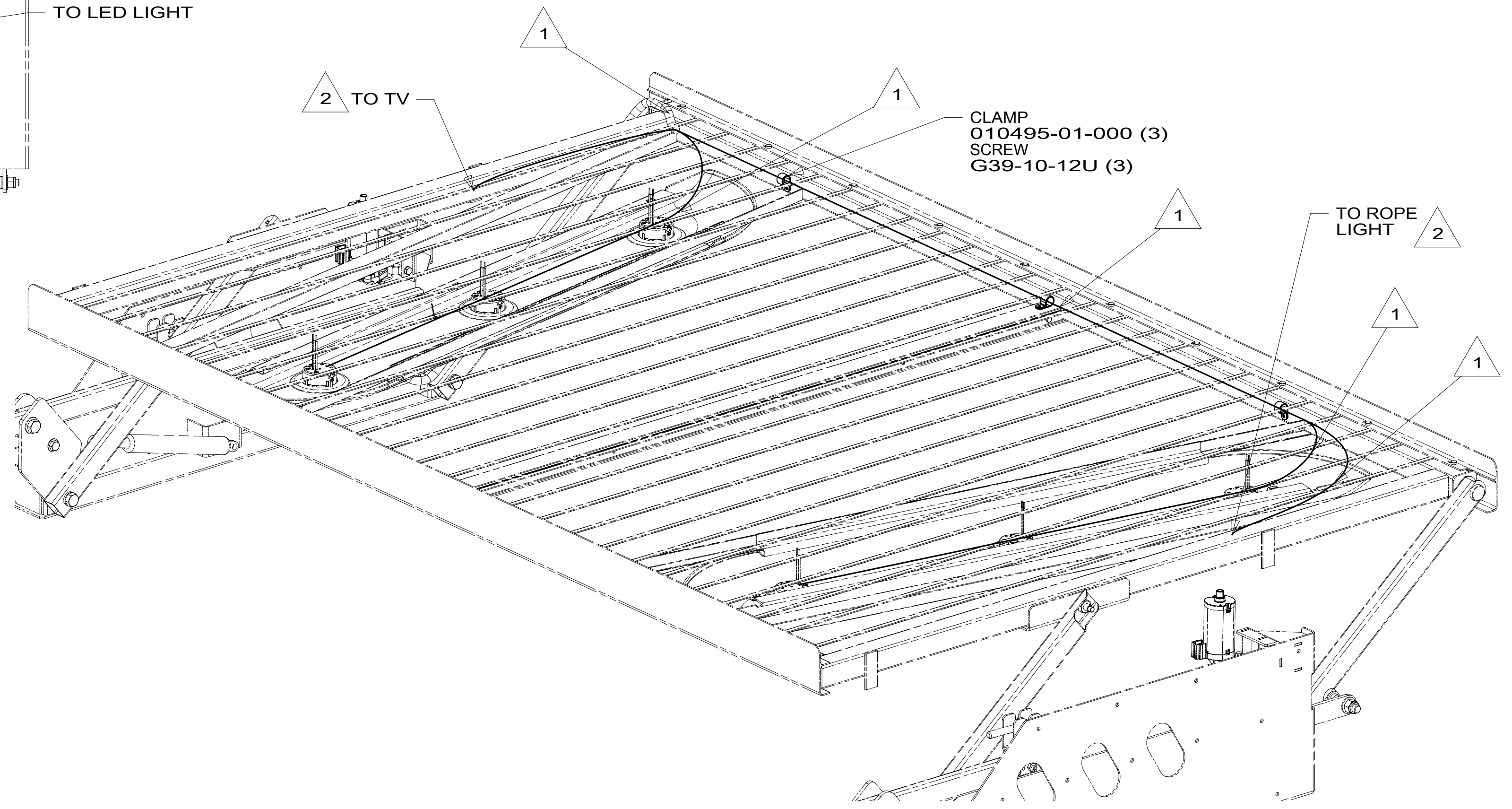
VIEW GA



VIEW GD



VIEW GB



VIEW GC

- NOTES:
- 3 SECURE WIRE ASSEMBLY TO TOP OF HINGE TUBE USING WIRE TIE 008343-02-000 (3 PLACES).
  - 2 ROUTE WIRES THROUGH BOTTOM OF BUNK INTO OVHD CABINET.
  - 1 ROUTE WIRES ABOVE TUBES/SUPPORTS TO ENSURE WIRES ARE NOT PINCHED.

265 CODES/STANDARDS-CSA/CMVSS  
 1B1 CODES/STANDARDS USA

FOR ELECTRICAL TORQUE SPECIFICATIONS SEE DWG NO. 128783-01-000

FOR ELECTRICAL CALLOUTS SEE DWG NO. 121339-01-000

DESCRIPTION:	
1B1 265	
WIRING INSTL-BODY, 12V	
SHEET:	ITEM/PART NO. REV
7 OF 7	000181616 / 30155001000

8 7 6 5 4 3 2 1 20-Sep-2016

\*301550 \*A