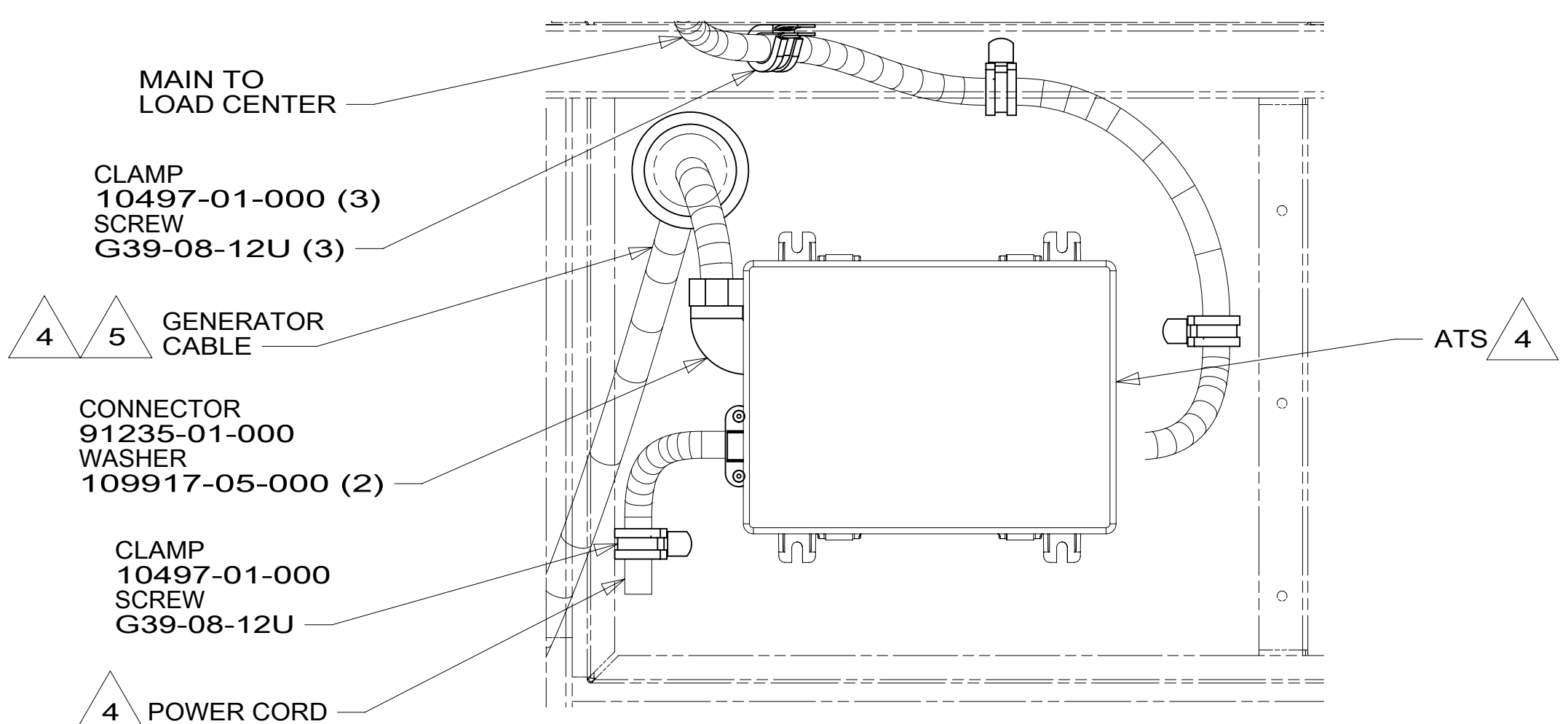
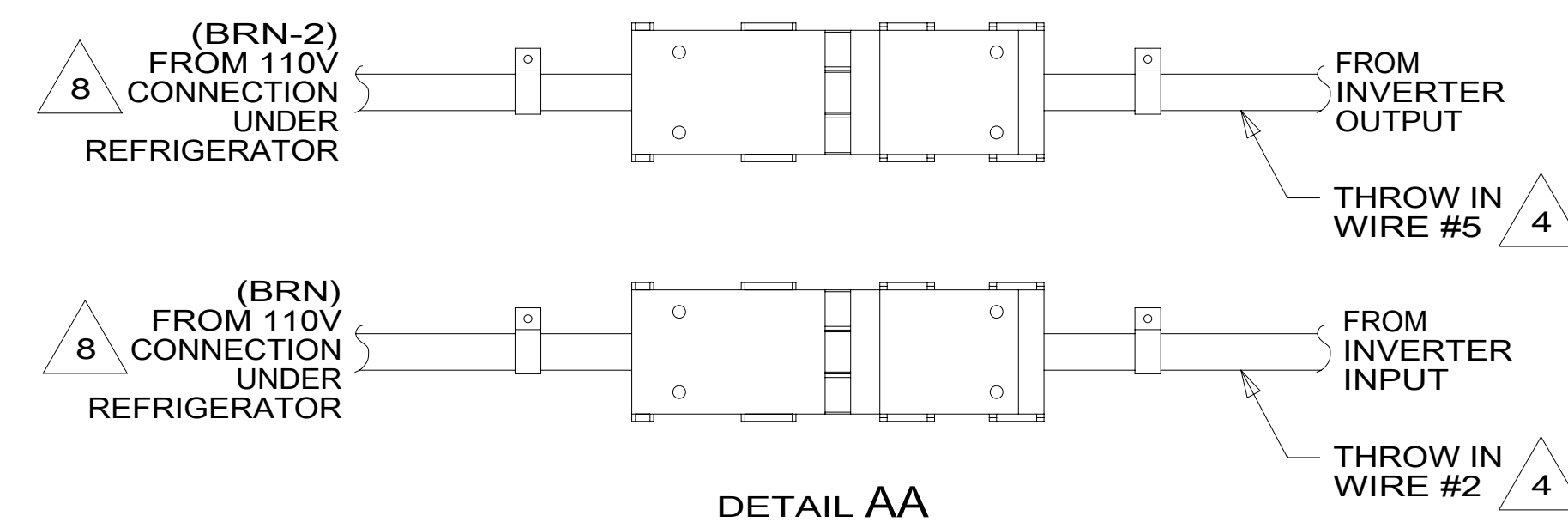
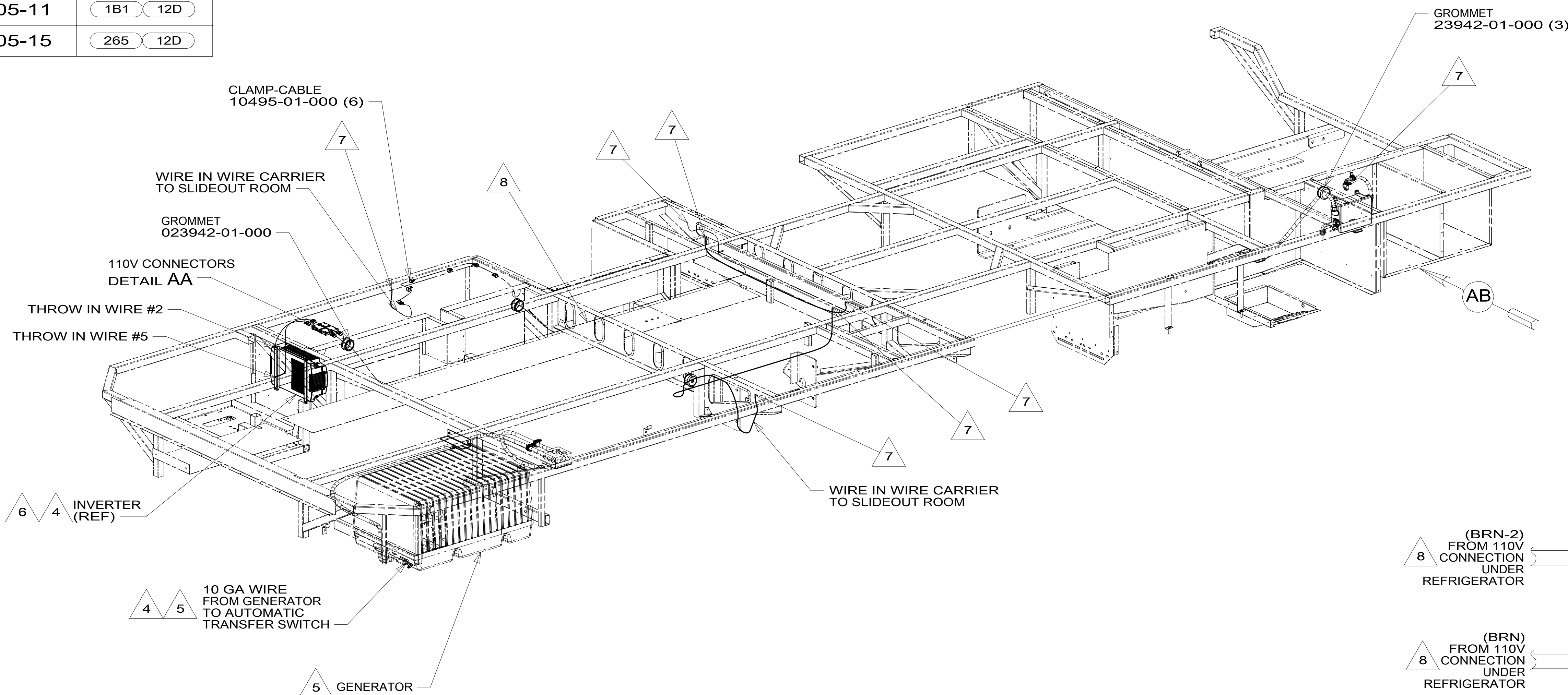


DRAWING NO.	FEATURE
301505-01	-----
301505-11	1B1 12D
301505-15	265 12D



- 8 WIRE IS PART OF WIRE ASM-CHASSIS.
- 7 WIRE PASSES THROUGH FLOOR IN THIS AREA.
- 6 SEE BATTERY INSTL FOR ADDITIONAL INFORMATION.
- 5 SEE GENERATOR INSTL FOR ADDITIONAL INFORMATION.
- 4 SEE LOAD CENTER/ATS ASM FOR ADDITIONAL INFORMATION.
3. ALL GROUND WIRES TO BE COVERED WITH TUBING 8041-02-000.
2. ALL 110V WIRES ARE TO BE CLAMPED WITH CLAMP 10497-05-000 WITHIN 200MM OF OUTLET BOXES, USE SCREW G67-10-12B.
1. ALL WIRES TO BE SECURED WITH CLAMP 10495 OR 10497 OR WIRE TIE 8343 OR 108046 EVERY 600MM, USE SCREW G67-XX-XXX OR G56-XX-XXX AS APPROPRIATE FOR INSTALLATION.

NOTES:

FOR ELECTRICAL TORQUE SPECIFICATIONS SEE DWG NO. 128783-01-000

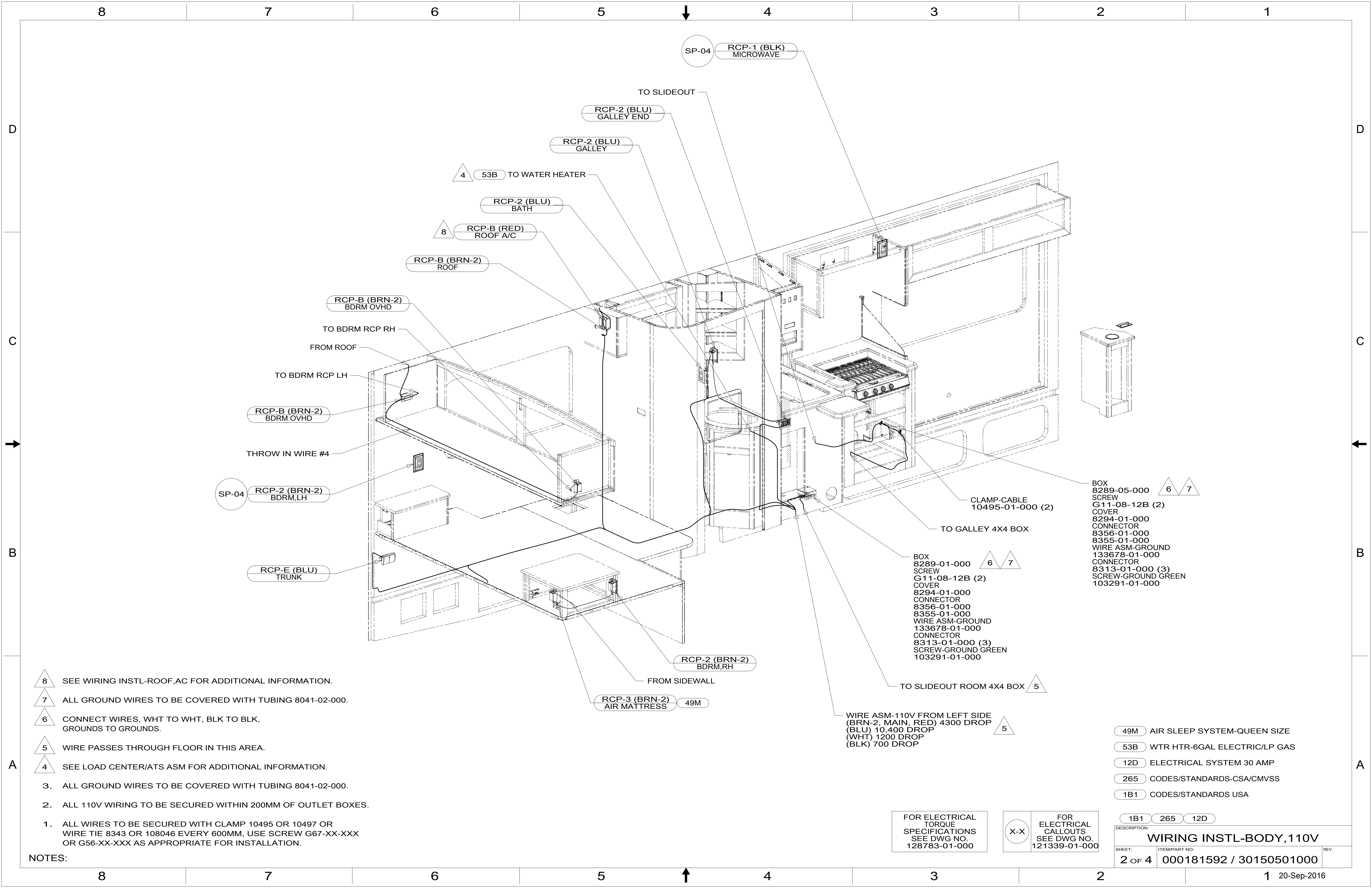
FOR ELECTRICAL CALLOUTS SEE DWG NO. 121339-01-000

- 12D ELECTRICAL SYSTEM 30 AMP
- 265 CODES/STANDARDS-CSA/CMVSS
- 1B1 CODES/STANDARDS USA

1B1 265 12D

**WINNEBAGO**  
COPYRIGHT 2016 WINNEBAGO INDUSTRIES, INC.

DSNR:	ALL DIMENSIONS ARE IN MILLIMETERS
DFFR:	
UNSPECIFIED TOLERANCES:	MATERIAL:
WHOLE DIM (X) :	3
ONE-PLACE (X.X) :	1.5
TWO-PLACE (X.XX) :	0.50
ANGLE :	1°
REFER TO ES0018 FOR FASTENER TIGHTENING GUIDELINES	WEIGHT: (LBS) FIRST USED:
DESCRIPTION: <b>WIRING INSTL-BODY, 110V</b>	
SHEET: 1 OF 4	ITEM/PART NO: 000181592 / 30150501000
REF:	1 20-Sep-2016



- 8 SEE WIRING INSTL-ROOF, AC FOR ADDITIONAL INFORMATION.
- 7 ALL GROUND WIRES TO BE COVERED WITH TUBING 8041-02-000.
- 6 CONNECT WIRES, WHT TO WHT, BLK TO BLK, GROUNDS TO GROUNDS.
- 5 WIRE PASSES THROUGH FLOOR IN THIS AREA.
- 4 SEE LOAD CENTER/ATS ASM FOR ADDITIONAL INFORMATION.

- 3. ALL GROUND WIRES TO BE COVERED WITH TUBING 8041-02-000.
- 2. ALL 110V WIRING TO BE SECURED WITHIN 200MM OF OUTLET BOXES.
- 1. ALL WIRES TO BE SECURED WITH CLAMP 10495 OR 10497 OR WIRE TIE 8343 OR 108046 EVERY 600MM, USE SCREW G67-XX-XXX OR G56-XX-XXX AS APPROPRIATE FOR INSTALLATION.

NOTES:

FOR ELECTRICAL TORQUE SPECIFICATIONS SEE DWG NO. 128783-01-000

FOR ELECTRICAL CALLOUTS SEE DWG NO. 121339-01-000

- BOX 8289-05-000
- SCREW G11-08-12B (2)
- COVER 8294-01-000
- CONNECTOR 8356-01-000
- 8355-01-000
- WIRE ASM-GROUND 133678-01-000
- CONNECTOR 8313-01-000 (3)
- SCREW-GROUND GREEN 103291-01-000

- BOX 8289-01-000
- SCREW G11-08-12B (2)
- COVER 8294-01-000
- CONNECTOR 8356-01-000
- 8355-01-000
- WIRE ASM-GROUND 133678-01-000
- CONNECTOR 8313-01-000 (3)
- SCREW-GROUND GREEN 103291-01-000

- 49M AIR SLEEP SYSTEM-QUEEN SIZE
- 53B WTR HTR-6GAL ELECTRIC/LP GAS
- 12D ELECTRICAL SYSTEM 30 AMP
- 265 CODES/STANDARDS-CSA/CMVSS
- 1B1 CODES/STANDARDS USA

DESCRIPTION: <b>WIRING INSTL-BODY, 110V</b>		
SHEET: 2 OF 4	ITEM/PART NO: 000181592 / 30150501000	REV

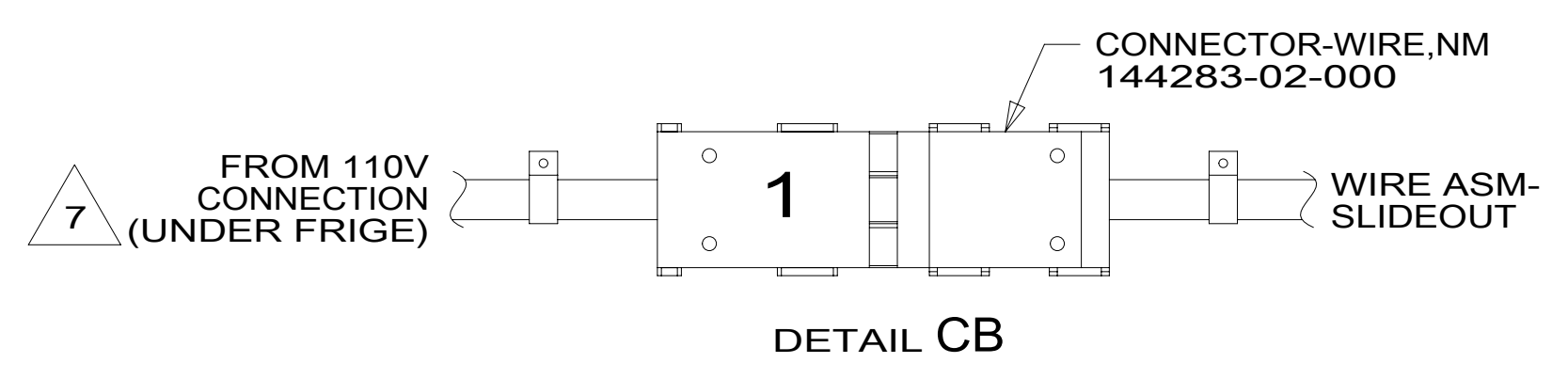
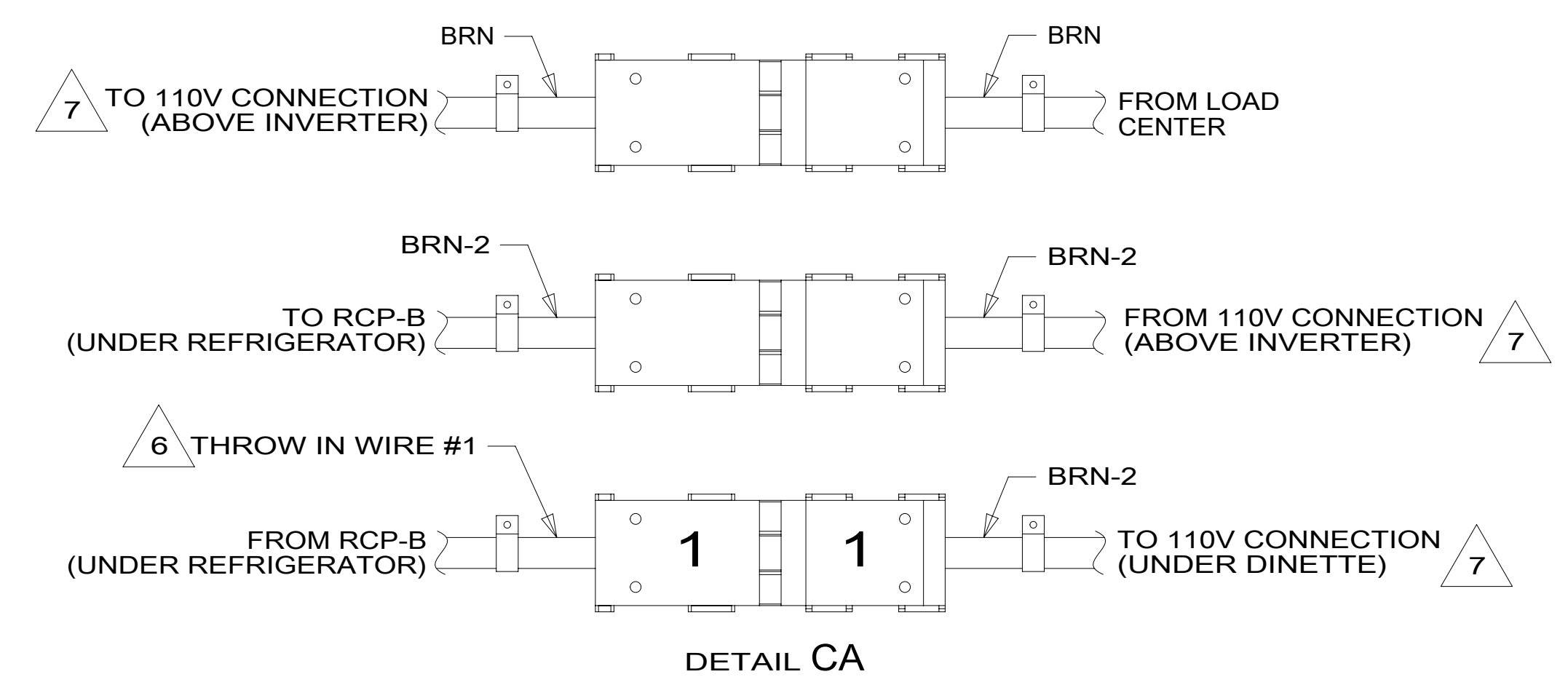
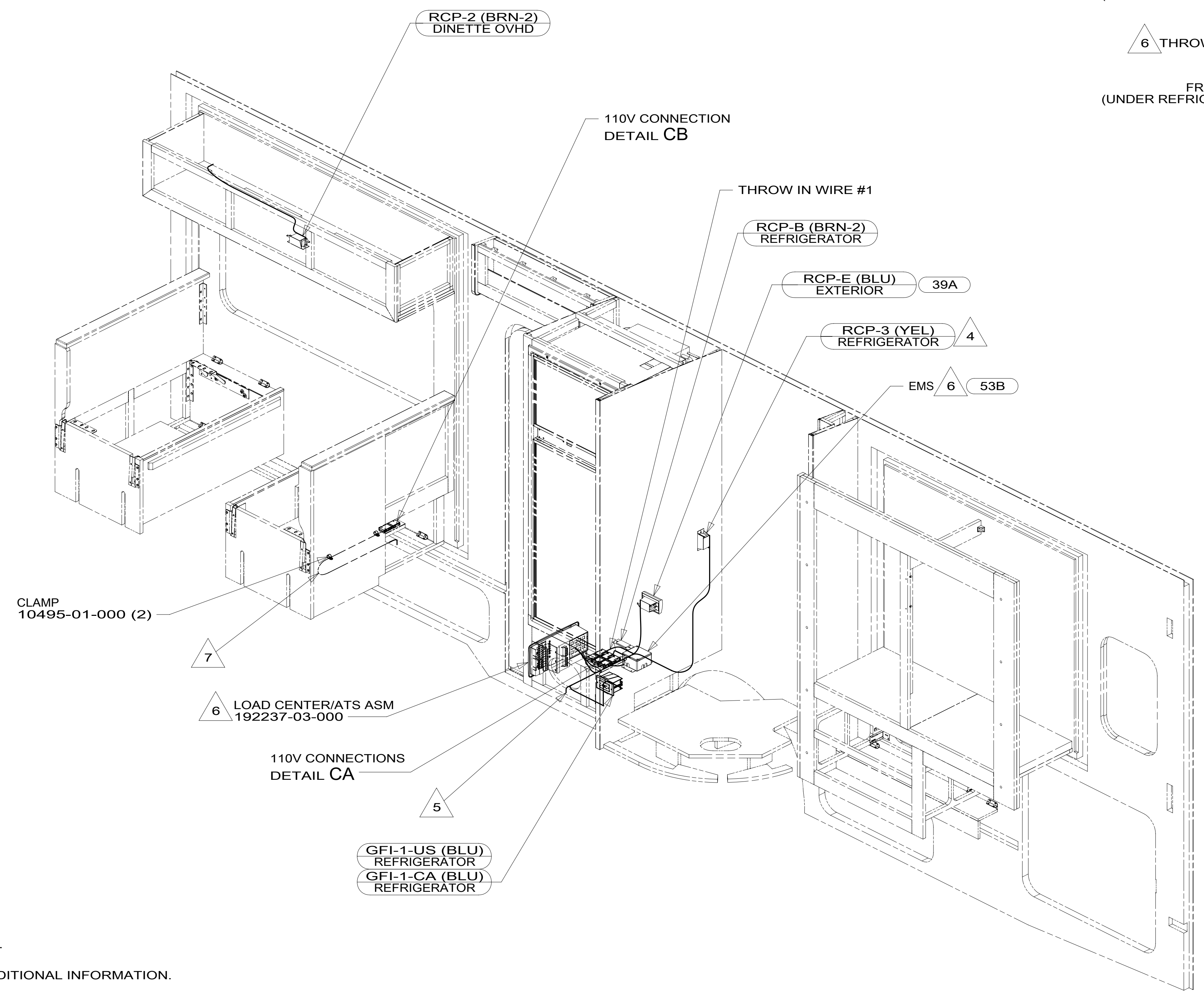
8 7 6 5 4 3 2 1

D

C

B

A



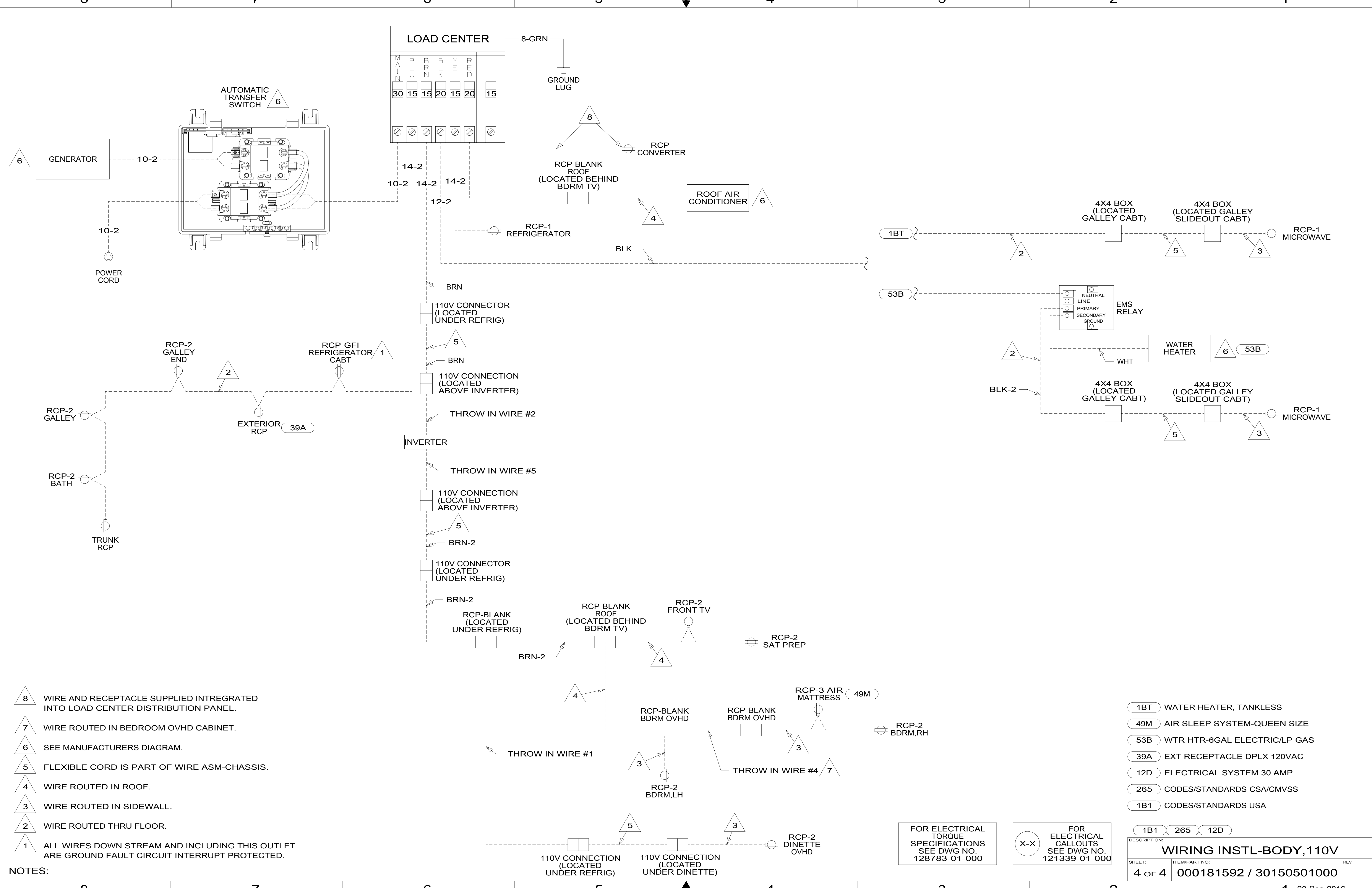
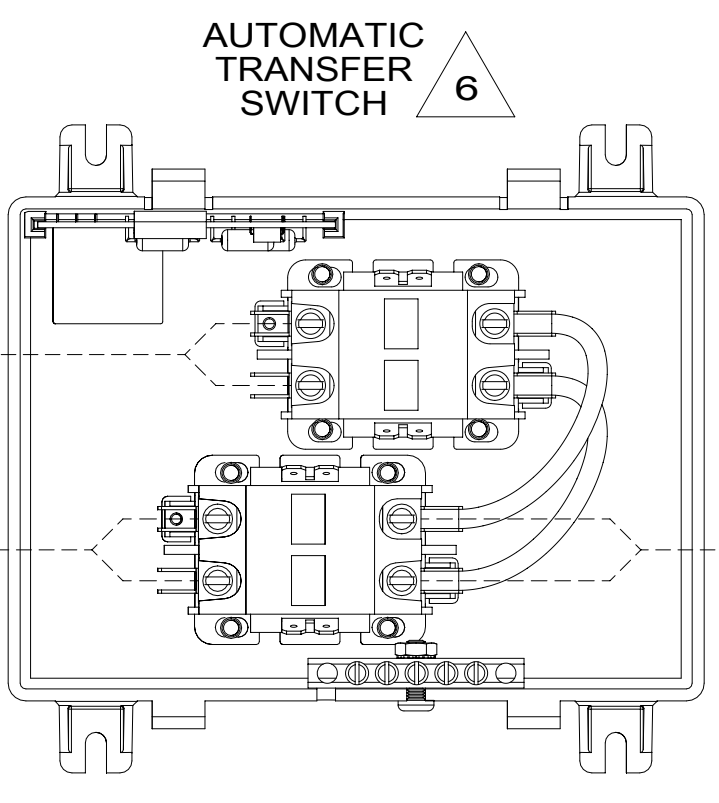
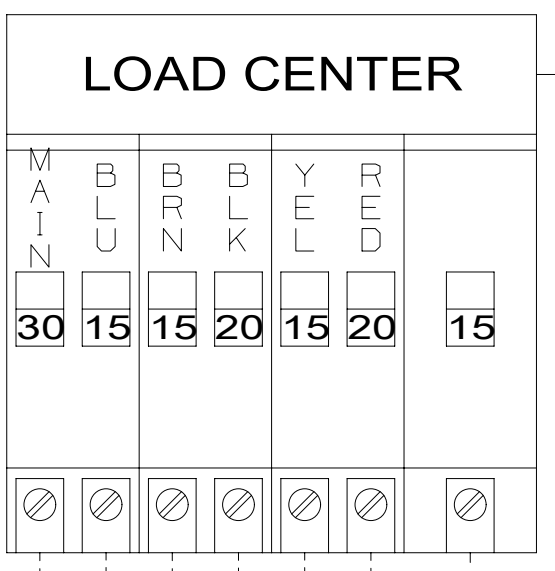
- NOTES:
- 7 WIRE IS PART OF WIRE ASM-CHASSIS.
  - 6 SEE LOAD CENTER/ATS INSTL FOR ADDITIONAL INFORMATION.
  - 5 WIRE PASSES THROUGH FLOOR IN THIS AREA.
  - 4 LOCATE RCP-REFRIGERATOR ON TIEDOWN STRAP.
  - 3. ALL GROUND WIRES TO BE COVERED WITH TUBING 8041-02-000.
  - 2. ALL 110V WIRING TO BE SECURED WITHIN 200MM OF OUTLET BOXES.
  - 1. ALL WIRES TO BE SECURED WITH CLAMP 10495 OR 10497 OR WIRE TIE 8343 OR 108046 EVERY 600MM, USE SCREW G67-XX-XXX OR G56-XX-XXX AS APPROPRIATE FOR INSTALLATION.

FOR ELECTRICAL TORQUE SPECIFICATIONS SEE DWG NO. 128783-01-000

FOR ELECTRICAL CALLOUTS SEE DWG NO. 121339-01-000

- 53B WTR HTR-6GAL ELECTRIC/LP GAS
- 39A EXT RECEPTACLE DPLX 120VAC
- 12D ELECTRICAL SYSTEM 30 AMP
- 265 CODES/STANDARDS-CSA/CMVSS
- 1B1 CODES/STANDARDS USA

DESCRIPTION:		1B1 265 12D	
<b>WIRING INSTL-BODY, 110V</b>			
SHEET:	ITEM/PART NO.:	REV:	
3 OF 4	000181592 / 30150501000		



- NOTES:**
- 8 WIRE AND RECEPTACLE SUPPLIED INTREGATED INTO LOAD CENTER DISTRIBUTION PANEL.
  - 7 WIRE ROUTED IN BEDROOM OVHD CABINET.
  - 6 SEE MANUFACTURERS DIAGRAM.
  - 5 FLEXIBLE CORD IS PART OF WIRE ASM-CHASSIS.
  - 4 WIRE ROUTED IN ROOF.
  - 3 WIRE ROUTED IN SIDEWALL.
  - 2 WIRE ROUTED THRU FLOOR.
  - 1 ALL WIRES DOWN STREAM AND INCLUDING THIS OUTLET ARE GROUND FAULT CIRCUIT INTERRUPT PROTECTED.

- 1BT WATER HEATER, TANKLESS
- 49M AIR SLEEP SYSTEM-QUEEN SIZE
- 53B WTR HTR-6GAL ELECTRIC/LP GAS
- 39A EXT RECEPTACLE DPLX 120VAC
- 12D ELECTRICAL SYSTEM 30 AMP
- 265 CODES/STANDARDS-CSA/CMVSS
- 1B1 CODES/STANDARDS USA

FOR ELECTRICAL TORQUE SPECIFICATIONS SEE DWG NO. 128783-01-000

FOR ELECTRICAL CALLOUTS SEE DWG NO. 121339-01-000

1B1 265 12D

DESCRIPTION: **WIRING INSTL-BODY, 110V**

SHEET: **4 OF 4** ITEM/PART NO: **000181592 / 30150501000** REV

1 20-Sep-2016