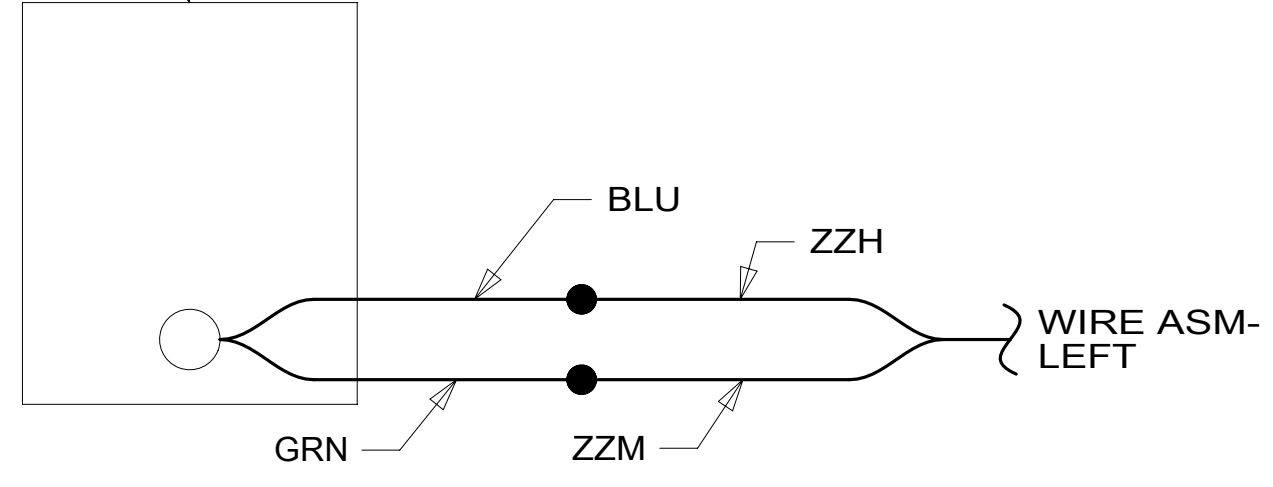


8 7 6 5 4 3 2 1

1BT CONTROL-WATER HEATER
301934-01-CHT
SCREW
G67-08-12U (2)



DETAIL AC 1BT

WIRES TO
MODULE-WATER PUMP
176001-01-000
DETAIL AA

THERMOSTAT
000016270 / 313193-01-CHT
PLATE-SPACER, THERMOSTAT
000018276 / 3131583-01-CHT
SCREW
G11-06-08U (2)

WIRE ASM-OVHD
192269-01-000

PSSLED-2
2

SWITCH
DETAIL CD

SWITCH
DETAIL CC

WIRE ASM-MAIN
HOLDING TANK
151317-05-000

WIRE ASM-WATER TANK
151317-02-000

WIRE ASM-AUX
HOLDING TANK
151316-02-000

2 PIN HSG
TO WIRE ASM-ROOF

USB-CHARGER
188312-01-000
DETAIL AB

WIRE ASM-OVHD
192240-01-000

READ-6
2

SWITCHES
DETAIL CA

PLATE-WALL
149557-03-CHT
SCREW
G39-08-08U (2)

5 282
PORT-SOLAR, SINGLE
191558-01-000
SCREW
G39-10-12U (4)

GROMMET
023942-01-000 (2)

2,9,12 PIN HSGS
TO WIRE ASM-CHASSIS 3

WIRE ASM-LEFT
192122-01-000

WIRE TO MACERATOR PUMP

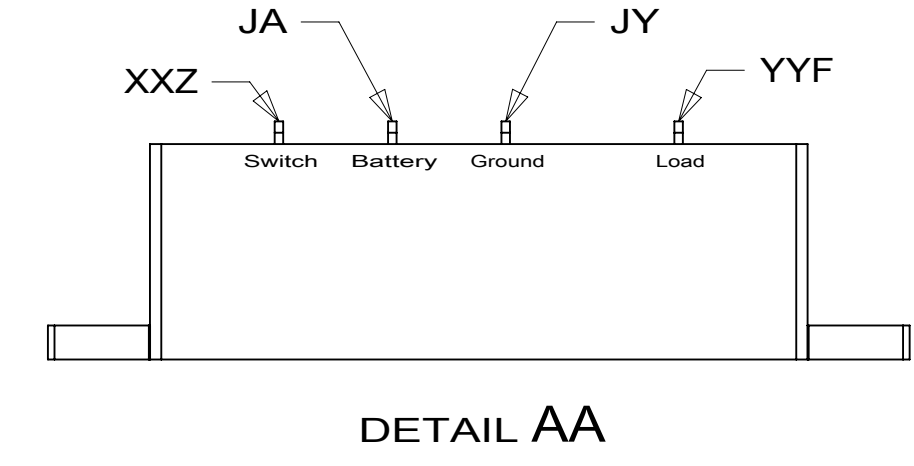
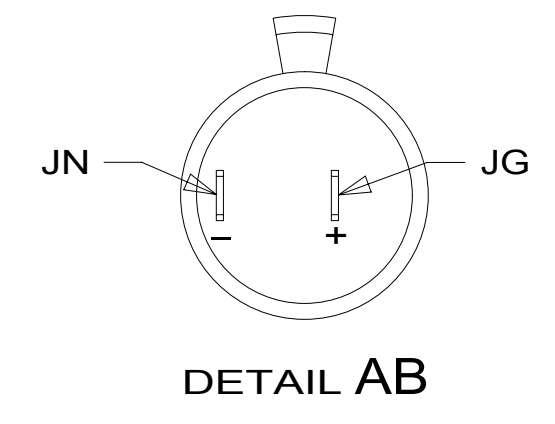
2 PIN HOUSING
TO WATER PUMP

- 5 SPLICE YELLOW TO RED AND WHITE TO BLACK.
- 4 WIRE PART OF WIRE ASM-CHASSIS.
- 3 WIRES PASS THROUGH FLOOR IN THIS AREA.

2. ROUTE TANK SENSOR WIRES SO THEY DO NOT PASSOVER SENSORS. USE WIRE TIE MOUNT 155366-01-000 AND WIRE TIE 8343-01-000 AS NEEDED. TANK SURFACE MUST BE CLEANED USING ISOPROPYL ALCOHOL AND PRIME WITH PRIMER 94

1. AT MINIMUM ALL WIRES TO BE SUPPORTED AND SECURED PER CODE REQUIREMENTS. USE CLAMP 10495 OR 10497 OR WIRE TIE 8343 OR 108046 AND SCREW G67-XX-XXX OR G56-XX-XXX AS APPROPRIATE FOR INSTALLATION.

NOTES:



FOR ELECTRICAL
TORQUE
SPECIFICATIONS
SEE DWG NO.
128783-01-000

FOR ELECTRICAL
CALLOUTS
SEE DWG NO.
121339-01-000

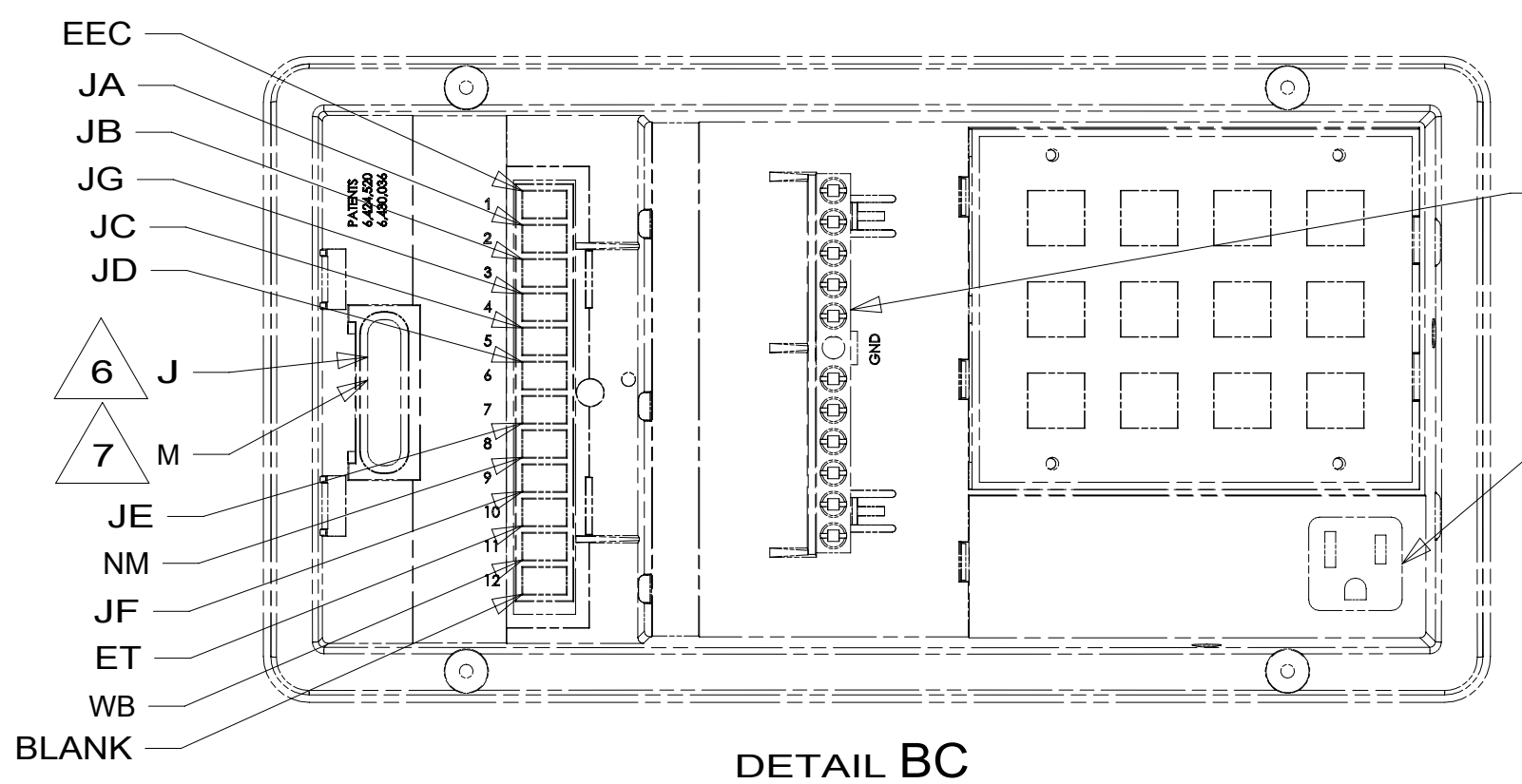
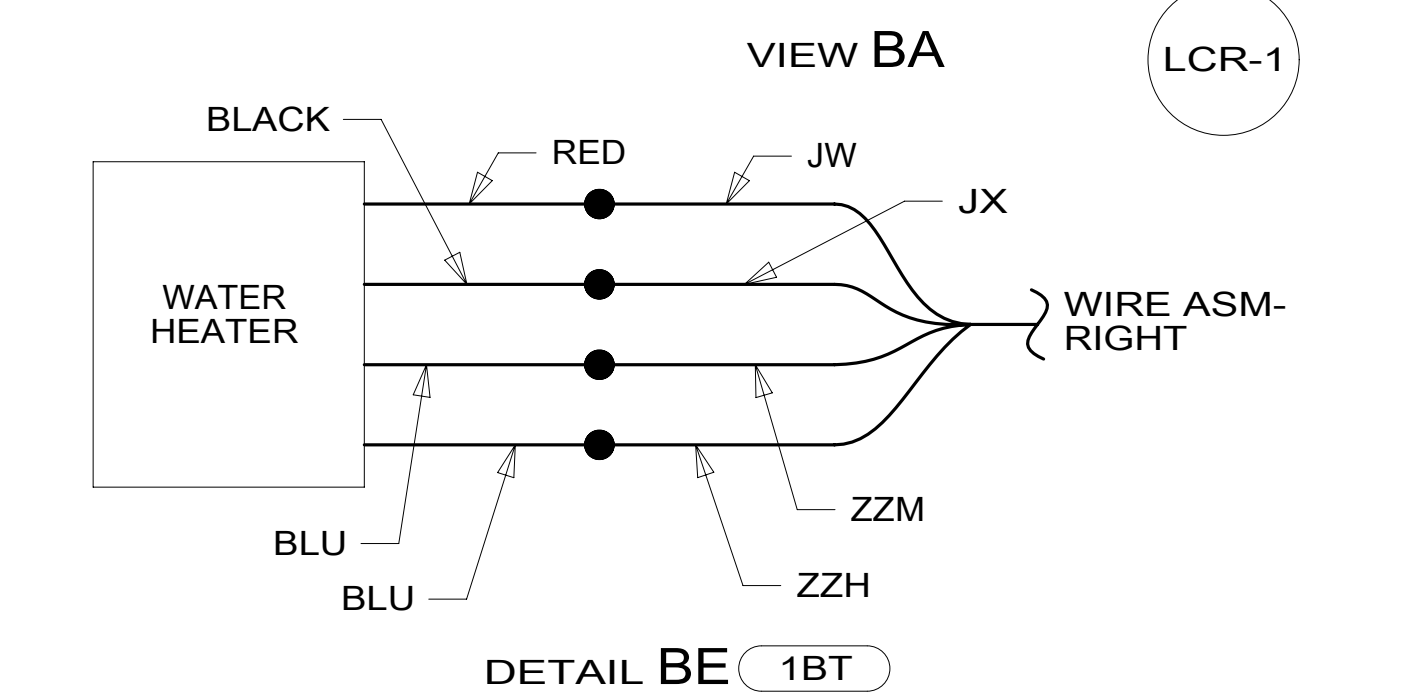
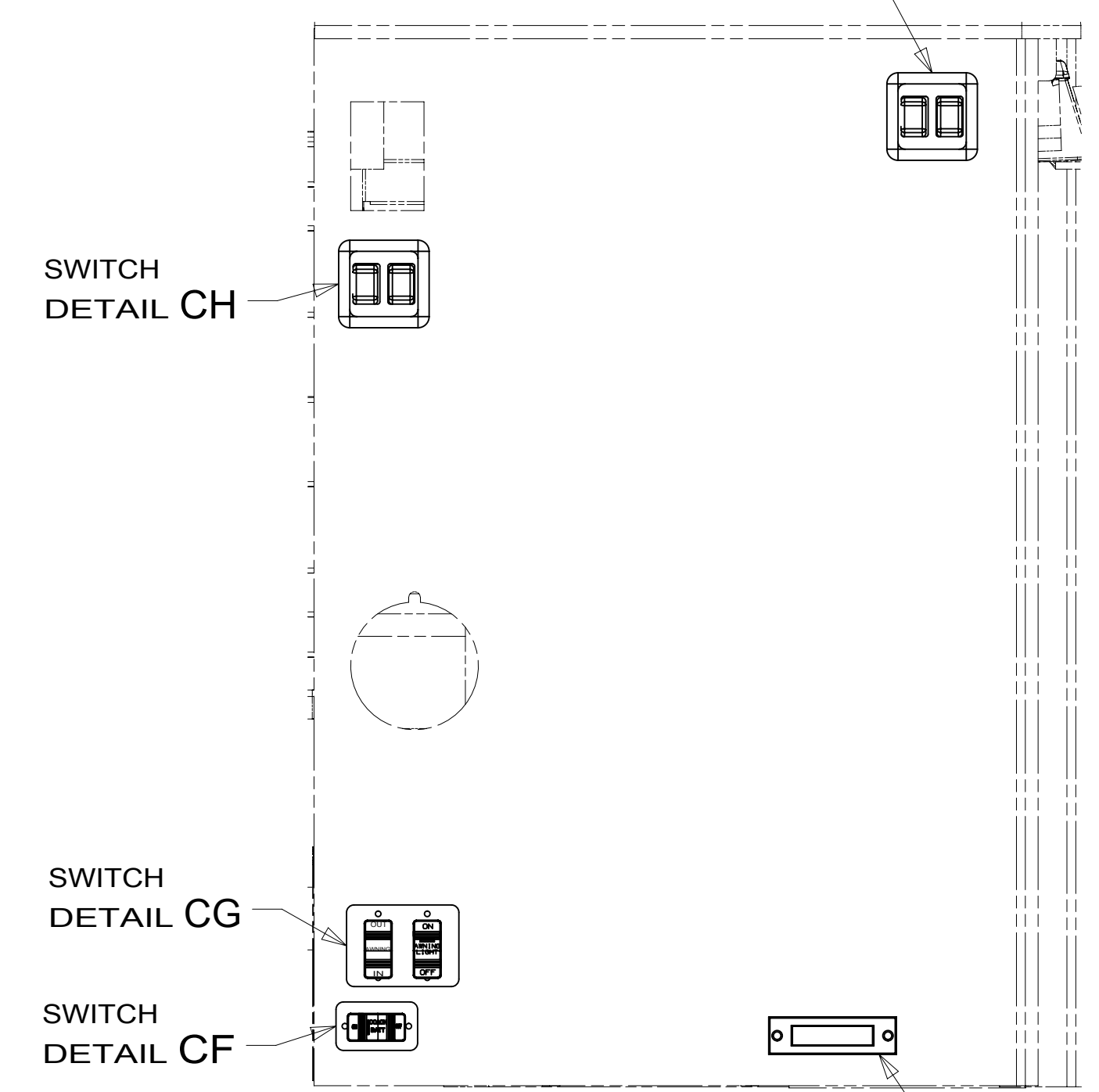
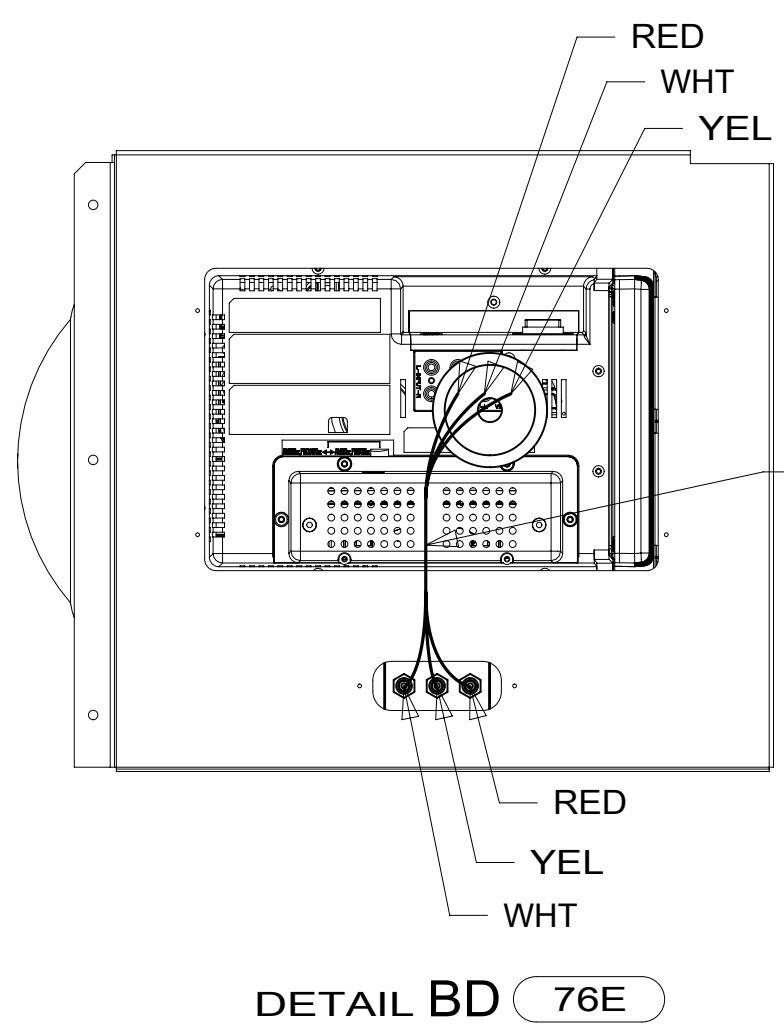
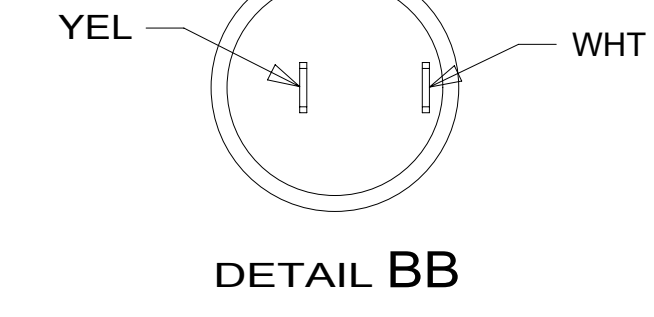
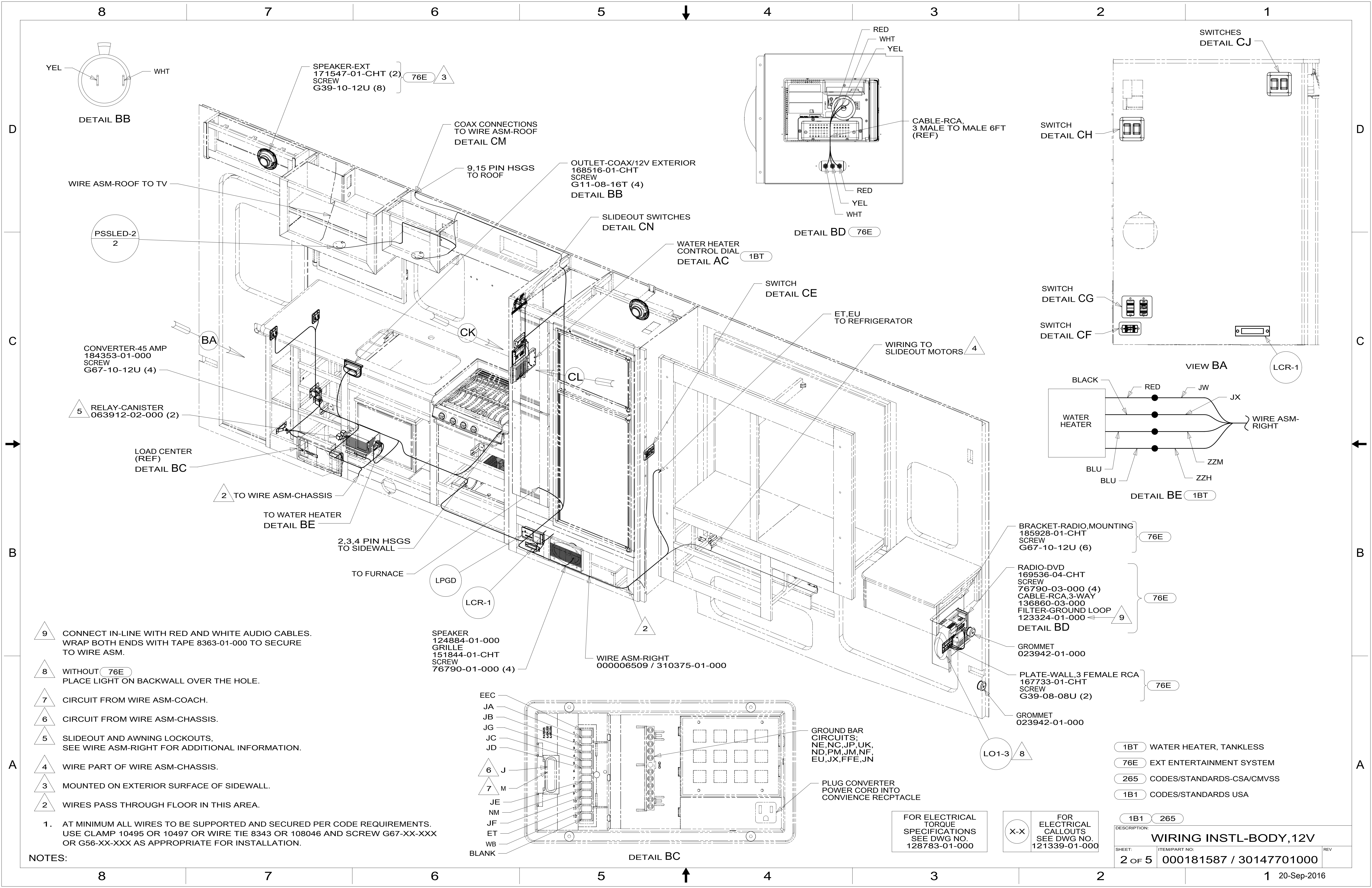
- 282 SOLAR PANEL - 100 WATT
- 1BT WATER HEATER, TANKLESS
- 265 CODES/STANDARDS-CSA/CMVSS
- 1B1 CODES/STANDARDS USA

1B1 265



DSNR:		ALL DIMENSIONS ARE IN MILLIMETERS	
DIFFR:		MATERIAL:	
UNSPECIFIED TOLERANCES:			
WHOLE DIM (X)	: 3		
ONE-PLACE (X.X)	: 1.5		
TWO-PLACE (X.XX)	: 0.50		
ANGLE	: 1°		
REFER TO ES0018 FOR FASTENER TIGHTENING GUIDELINES		WEIGHT: (LBS)	FIRST USED:
			16 727K
DESCRIPTION: WIRING INSTL-BODY, 12V			
SHEET:	ITEM/PART NO:	REV	
1 OF 5	000181587 / 30147701000		
REF:		1 20-Sep-2016	

8 7 6 5 4 3 2 1



- 9 CONNECT IN-LINE WITH RED AND WHITE AUDIO CABLES. WRAP BOTH ENDS WITH TAPE 8363-01-000 TO SECURE TO WIRE ASM.
- 8 WITHOUT 76E PLACE LIGHT ON BACKWALL OVER THE HOLE.
- 7 CIRCUIT FROM WIRE ASM-COACH.
- 6 CIRCUIT FROM WIRE ASM-CHASSIS.
- 5 SLIDEOUT AND AWNING LOCKOUTS. SEE WIRE ASM-RIGHT FOR ADDITIONAL INFORMATION.
- 4 WIRE PART OF WIRE ASM-CHASSIS.
- 3 MOUNTED ON EXTERIOR SURFACE OF SIDEWALL.
- 2 WIRES PASS THROUGH FLOOR IN THIS AREA.

1. AT MINIMUM ALL WIRES TO BE SUPPORTED AND SECURED PER CODE REQUIREMENTS. USE CLAMP 10495 OR 10497 OR WIRE TIE 8343 OR 108046 AND SCREW G67-XX-XXX OR G56-XX-XXX AS APPROPRIATE FOR INSTALLATION.

FOR ELECTRICAL TORQUE SPECIFICATIONS SEE DWG NO. 128783-01-000

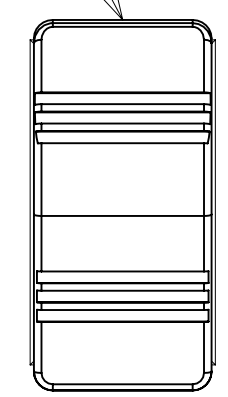
FOR ELECTRICAL CALLOUTS SEE DWG NO. 121339-01-000

- 1BT WATER HEATER, TANKLESS
- 76E EXT ENTERTAINMENT SYSTEM
- 265 CODES/STANDARDS-CSA/CMVSS
- 1B1 CODES/STANDARDS USA

DESCRIPTION: **WIRING INSTL-BODY, 12V**

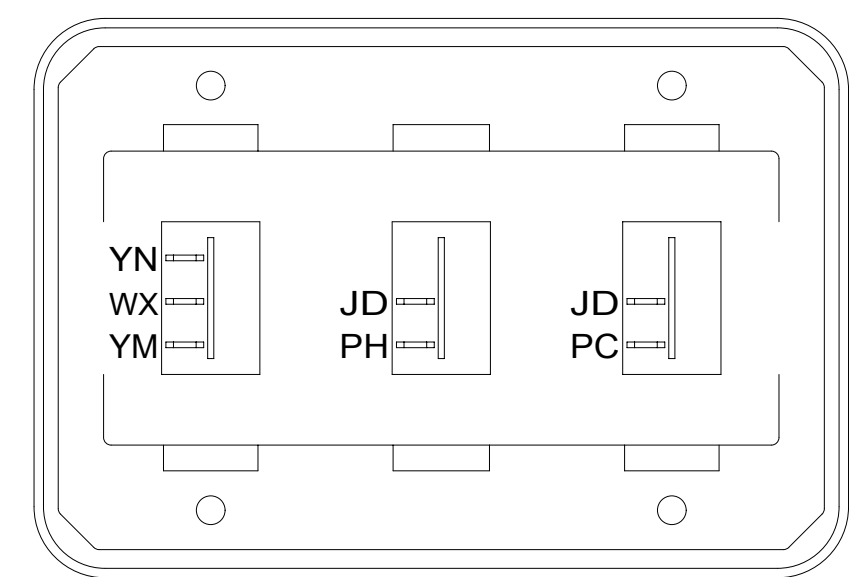
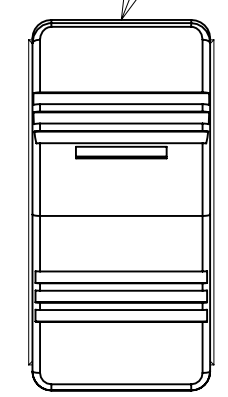
SHEET: 2 OF 5 ITEM/PART NO: 000181587 / 30147701000 REV

SWITCH-DRAIN PUMP
108357-09-000
ACTUATOR
108356-01-CHT



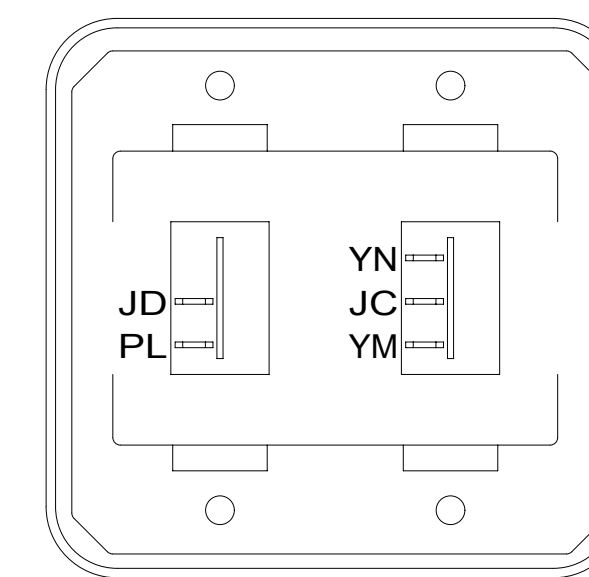
DETAIL CA

SWITCH-PUMP
108357-21-000
ACTUATOR
108356-03-CHT



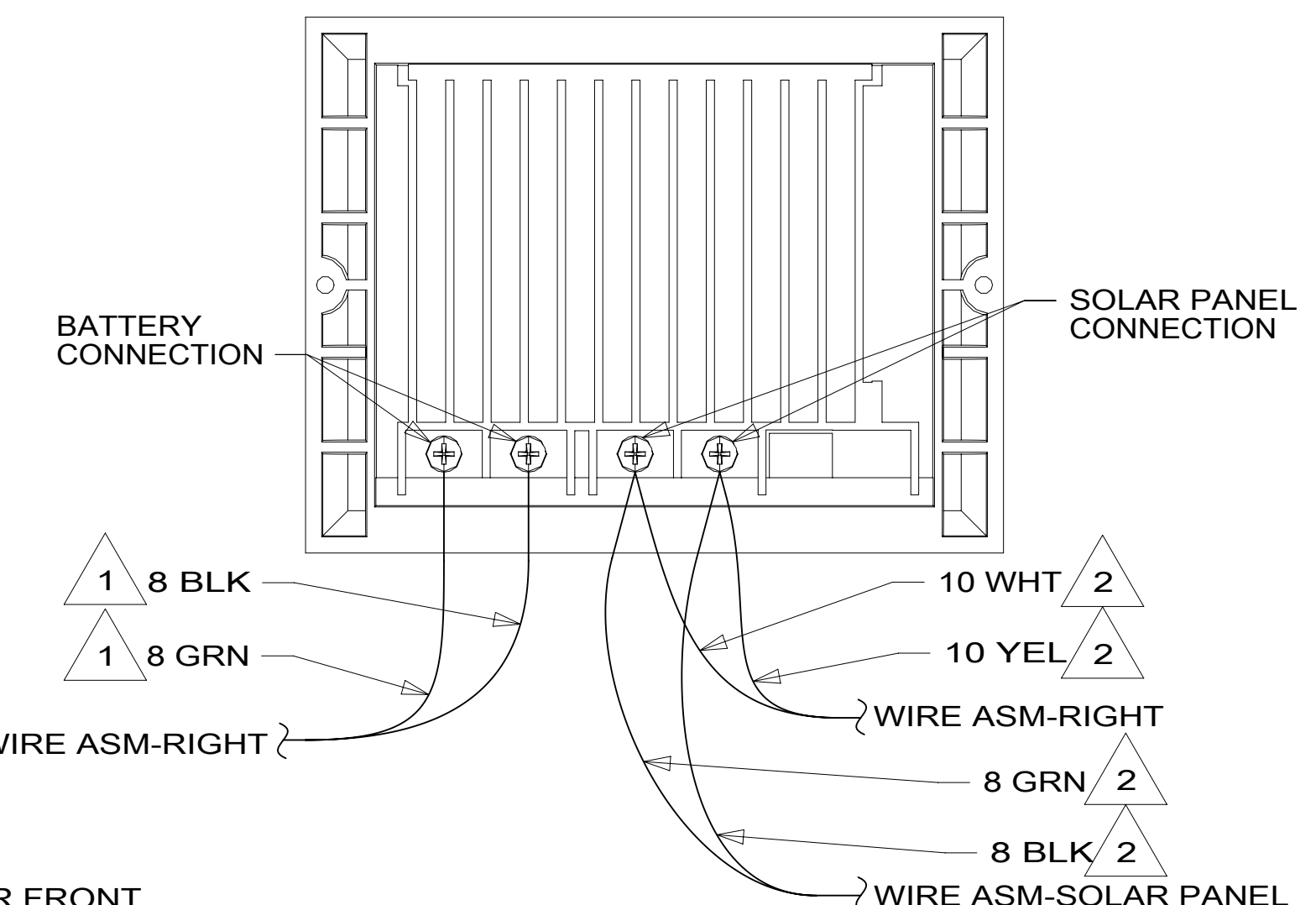
DETAIL CE

SWITCH-ROCKER
135740-01-CHT (2)
135740-02-CHT
SWITCH-BASE
135741-03-CHT
SWITCH-BEZEL
135742-03-CHT
SCREW
G11-08-08U (4)



DETAIL CJ

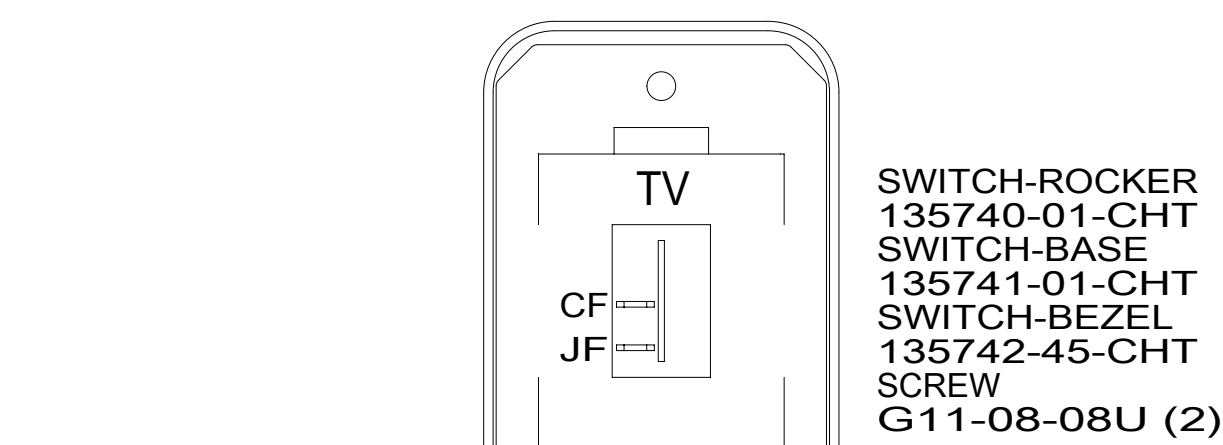
SWITCH-ROCKER
135740-01-CHT
135740-02-CHT
SWITCH-BASE
135741-02-CHT
SWITCH-BEZEL
135742-02-CHT
SCREW
G11-08-08U (4)



DETAIL CL 282

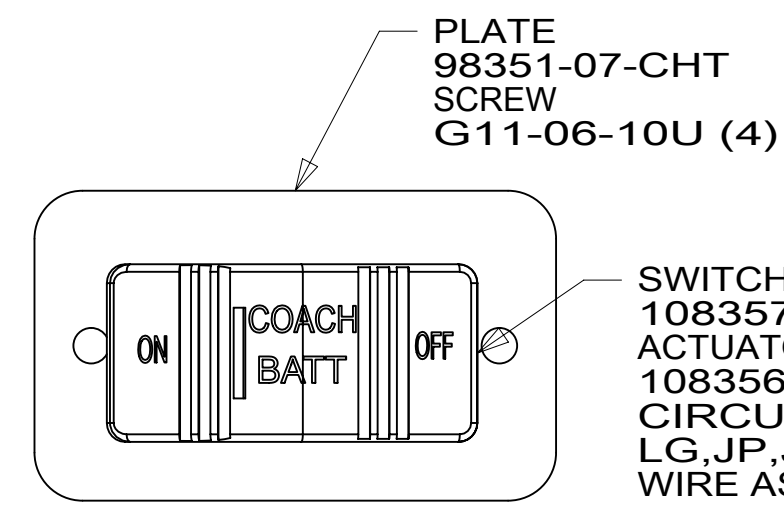
- 282 SOLAR PANEL - 100 WATT
- 53B WTR HTR-6GAL ELECTRIC/LP GAS
- 1BT WATER HEATER, TANKLESS
- 265 CODES/STANDARDS-CSA/CMVSS
- 1B1 CODES/STANDARDS USA

DESCRIPTION: WIRING INSTL-BODY, 12V		
SHEET: 3 OF 5	ITEM/PART NO: 000181587 / 30147701000	REV



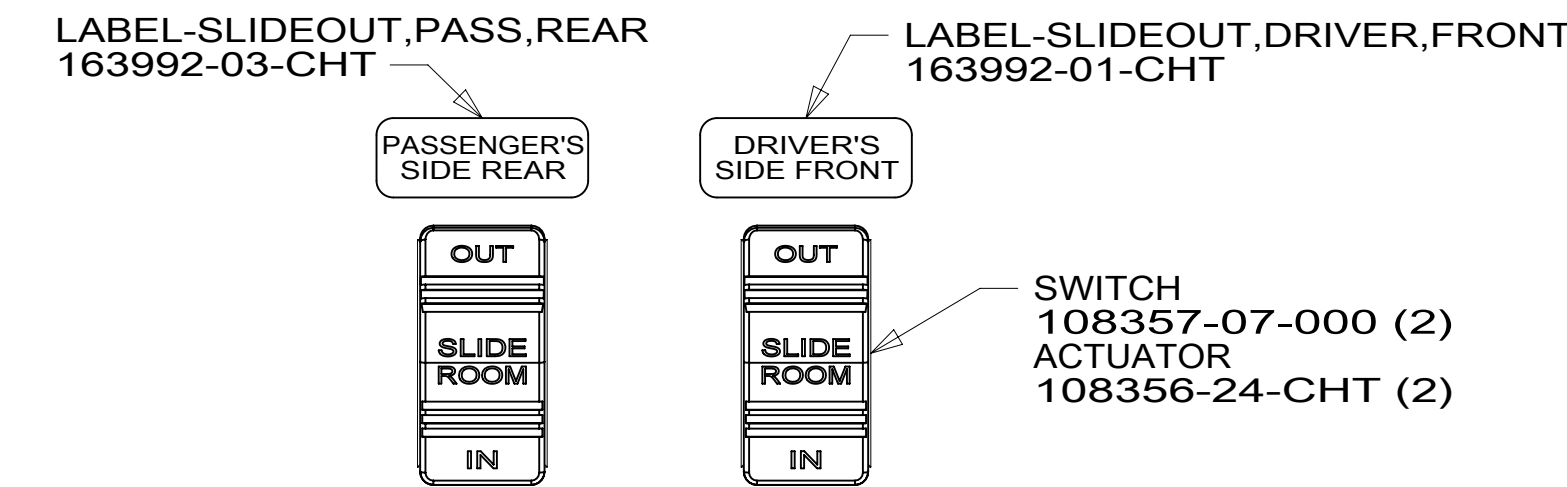
DETAIL CB

SWITCH-ROCKER
135740-01-CHT
SWITCH-BASE
135741-01-CHT
SWITCH-BEZEL
135742-45-CHT
SCREW
G11-08-08U (2)



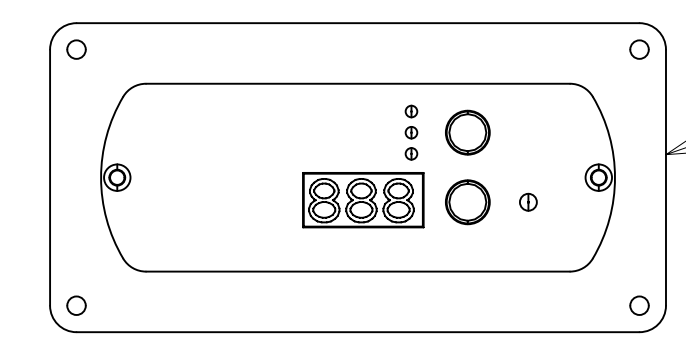
DETAIL CF

SWITCH-BATTERY
108357-18-000
ACTUATOR
108356-19-CHT
CIRCUITS LH,LJ,
LG,JP,JA
WIRE ASM-THERMISTOR
186796-01-000

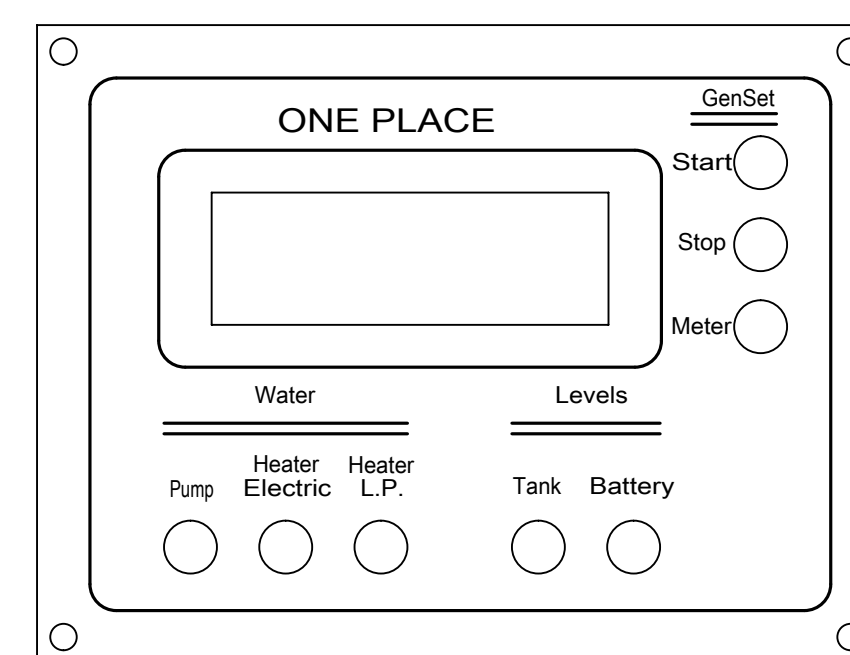


VIEW CN

WARNING CRUSH HAZARD. Keep people and objects clear of the inside and the outside of the slideout room when operating. Failure to comply could result in death or serious injury.



REMOTE PANEL-INVERTER
(SUPPLIED WITH INVERTER)
MODULE-12V DISC
173355-01-000



PANEL-MONITOR,LCD
175724-01-000
175724-04-000
SCREW
G11-08-12U (4)

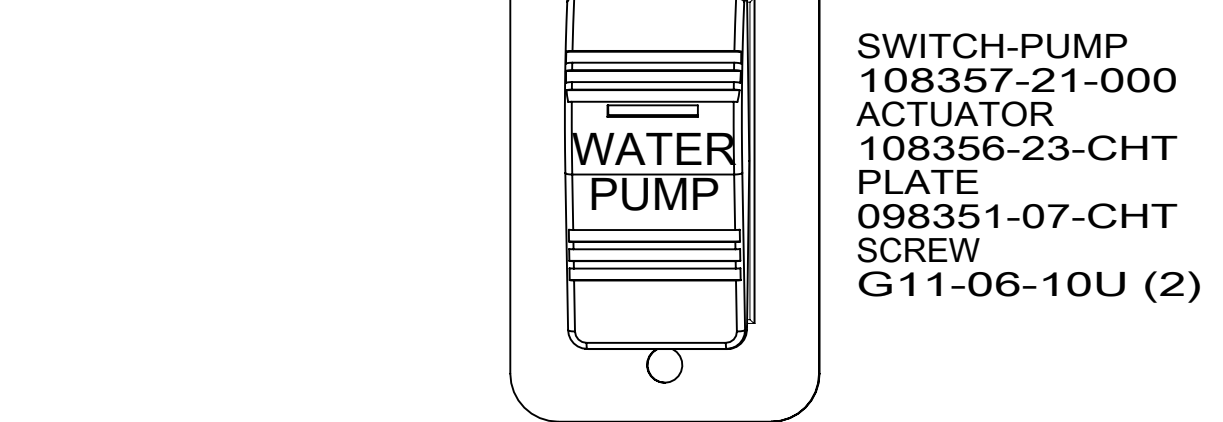


VIEW CK

CONTROL-CHARGE,
SOLAR 30 AMP
191278-01-000
SCREW
G11-08-08U (2)
DETAIL CL

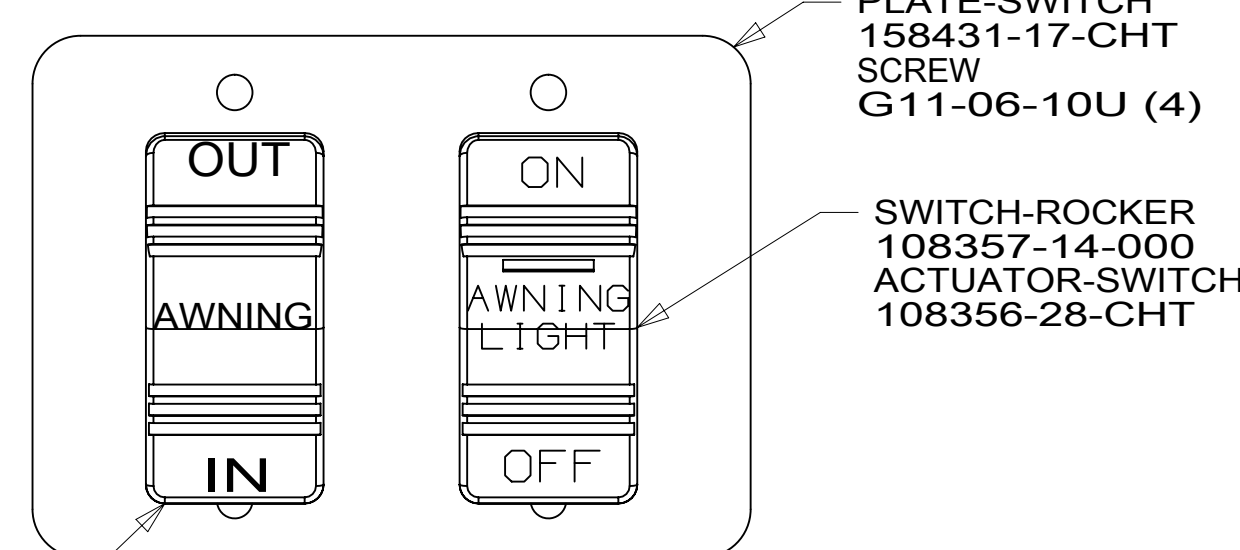
FOR ELECTRICAL TORQUE SPECIFICATIONS SEE DWG NO. 128783-01-000

FOR ELECTRICAL CALLOUTS SEE DWG NO. 121339-01-000



DETAIL CC

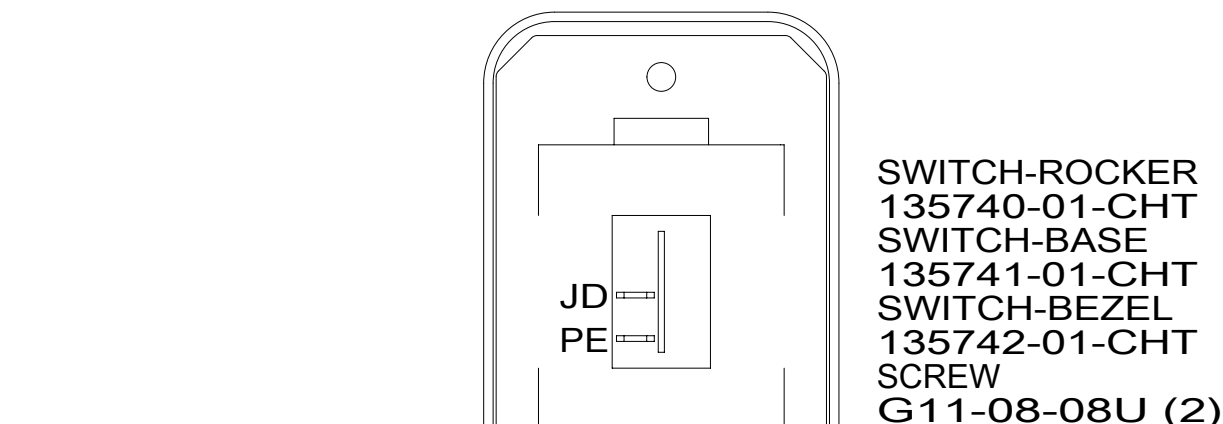
SWITCH-PUMP
108357-21-000
ACTUATOR
108356-23-CHT
PLATE
098351-07-CHT
SCREW
G11-06-10U (2)



DETAIL CG

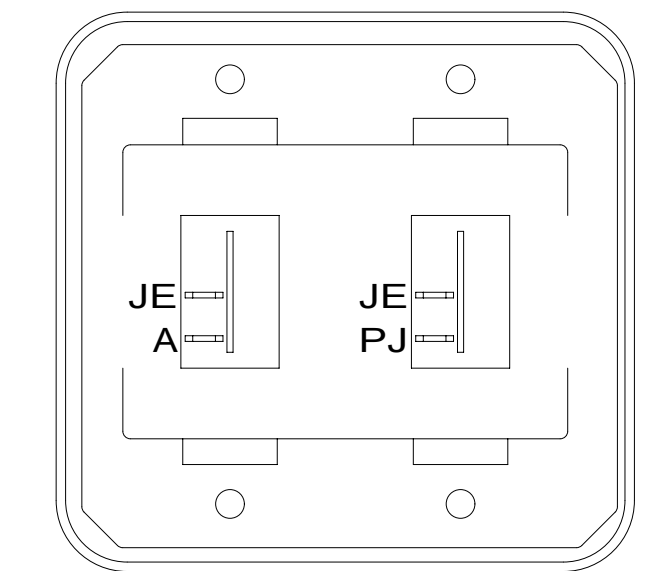
PLATE-SWITCH
158431-17-CHT
SCREW
G11-06-10U (4)

SWITCH-ROCKER
108357-14-000
ACTUATOR-SWITCH
108356-28-CHT



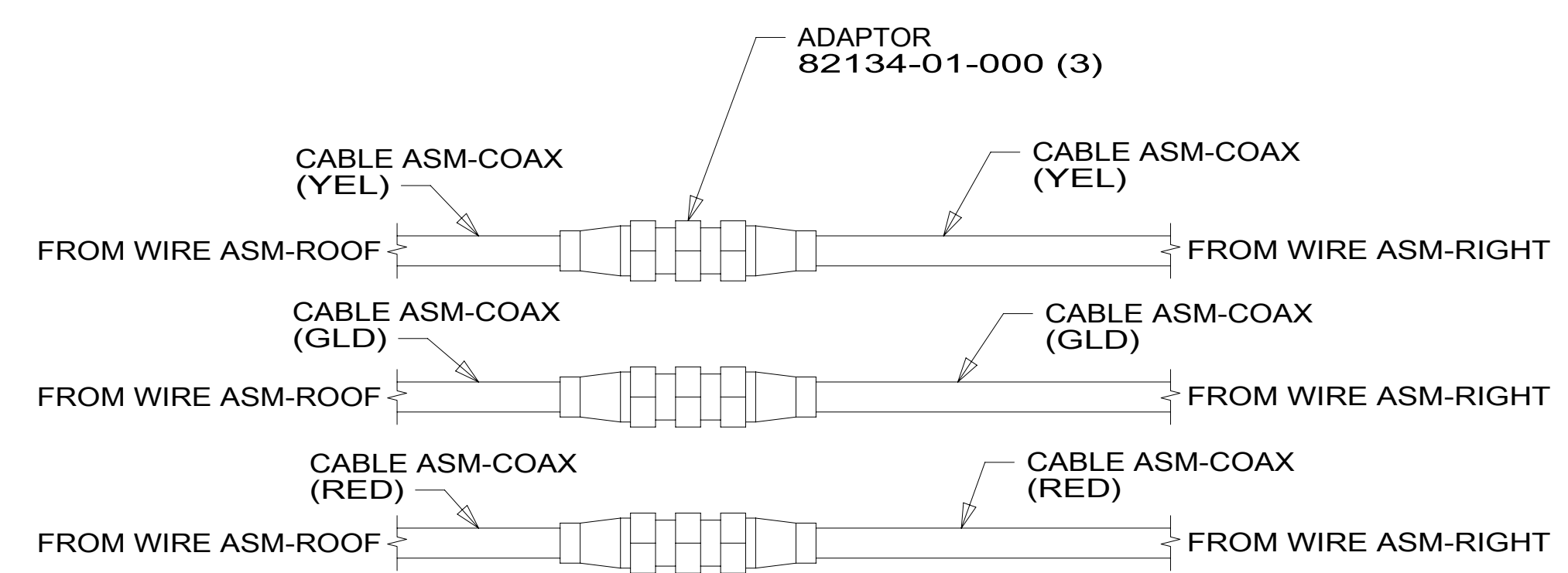
DETAIL CD

SWITCH-ROCKER
135740-01-CHT
SWITCH-BASE
135741-01-CHT
SWITCH-BEZEL
135742-01-CHT
SCREW
G11-08-08U (2)



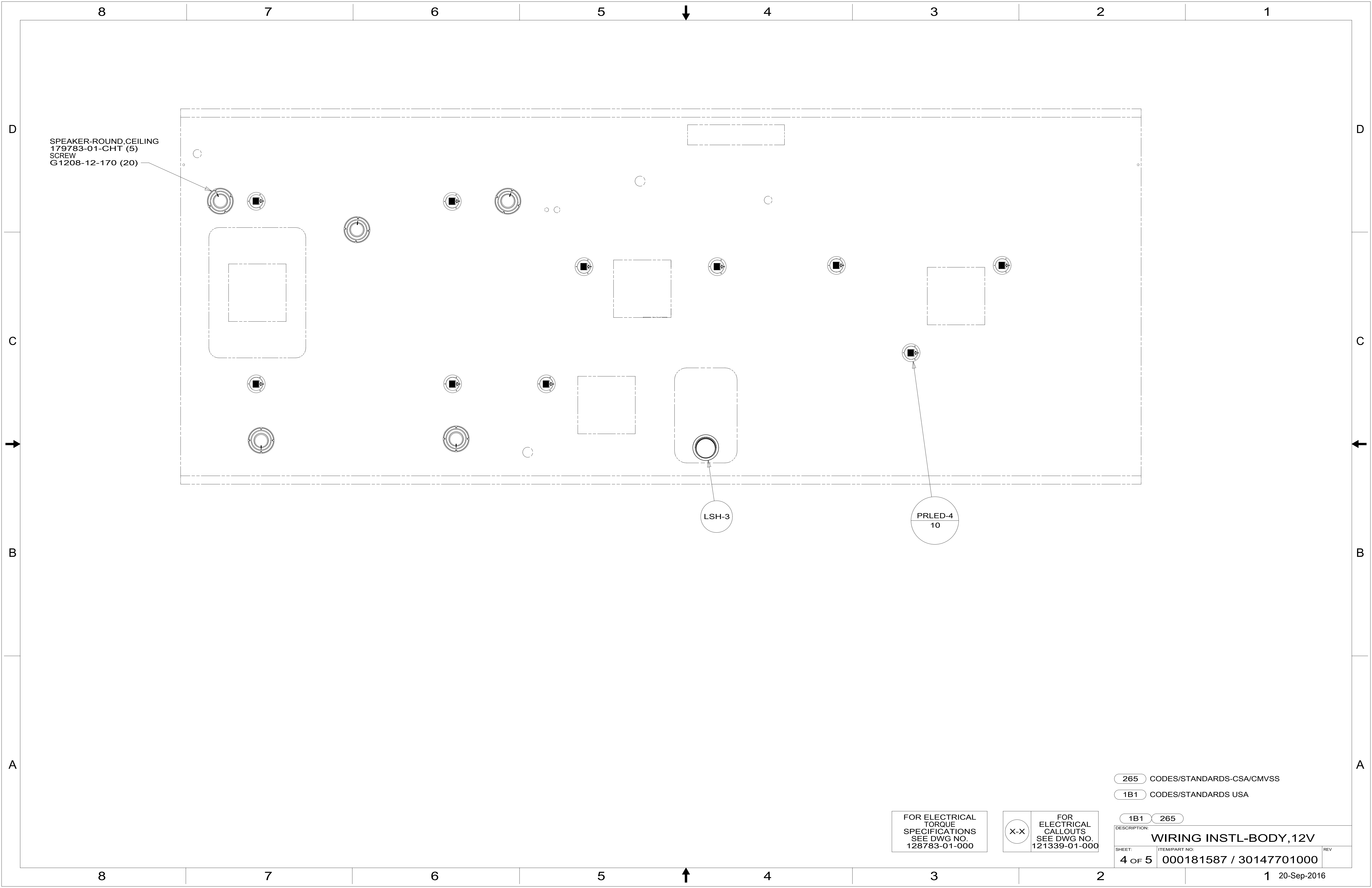
DETAIL CH

SWITCH-ROCKER
135740-01-CHT (2)
SWITCH-BASE
135741-02-CHT
SWITCH-BEZEL
135742-02-CHT
SCREW
G11-08-08U (4)



DETAIL CM

NOTES:
2 WIRE IS MARKED WITH YELLOW TAPE.
1 WIRE IS MARKED WITH GOLD TAPE.



SPEAKER-ROUND, CEILING
 179783-01-CHT (5)
 SCREW
 G1208-12-170 (20)

LSH-3

PRLED-4
 10

FOR ELECTRICAL
 TORQUE
 SPECIFICATIONS
 SEE DWG NO.
 128783-01-000

FOR
 ELECTRICAL
 CALLOUTS
 SEE DWG NO.
 121339-01-000

265 CODES/STANDARDS-CSA/CMVSS

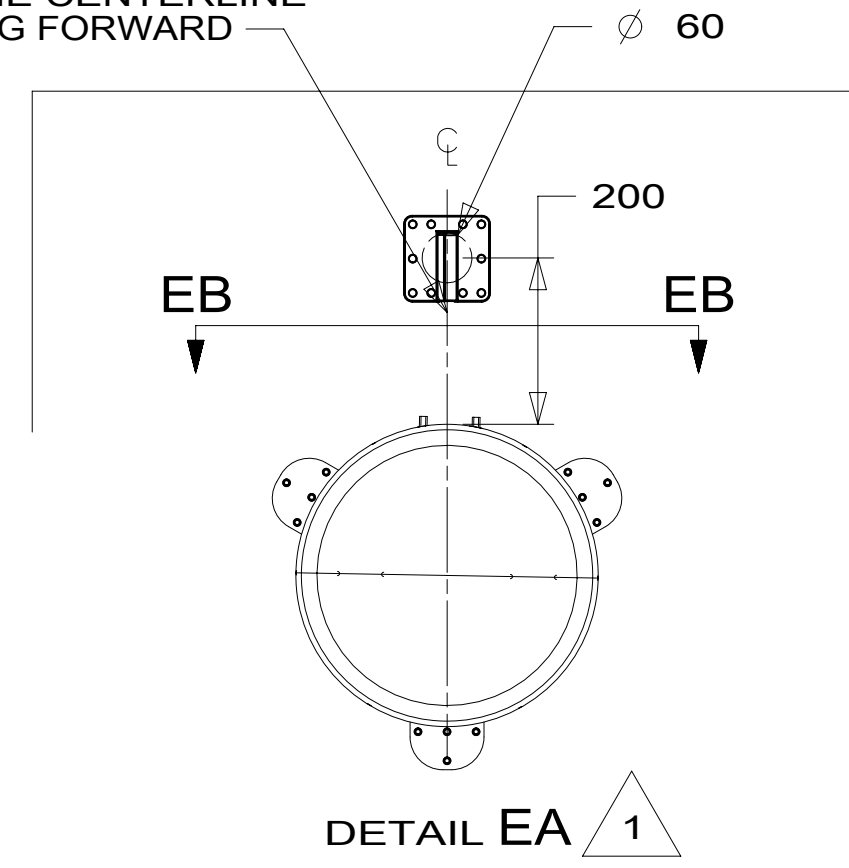
1B1 CODES/STANDARDS USA

1B1 265

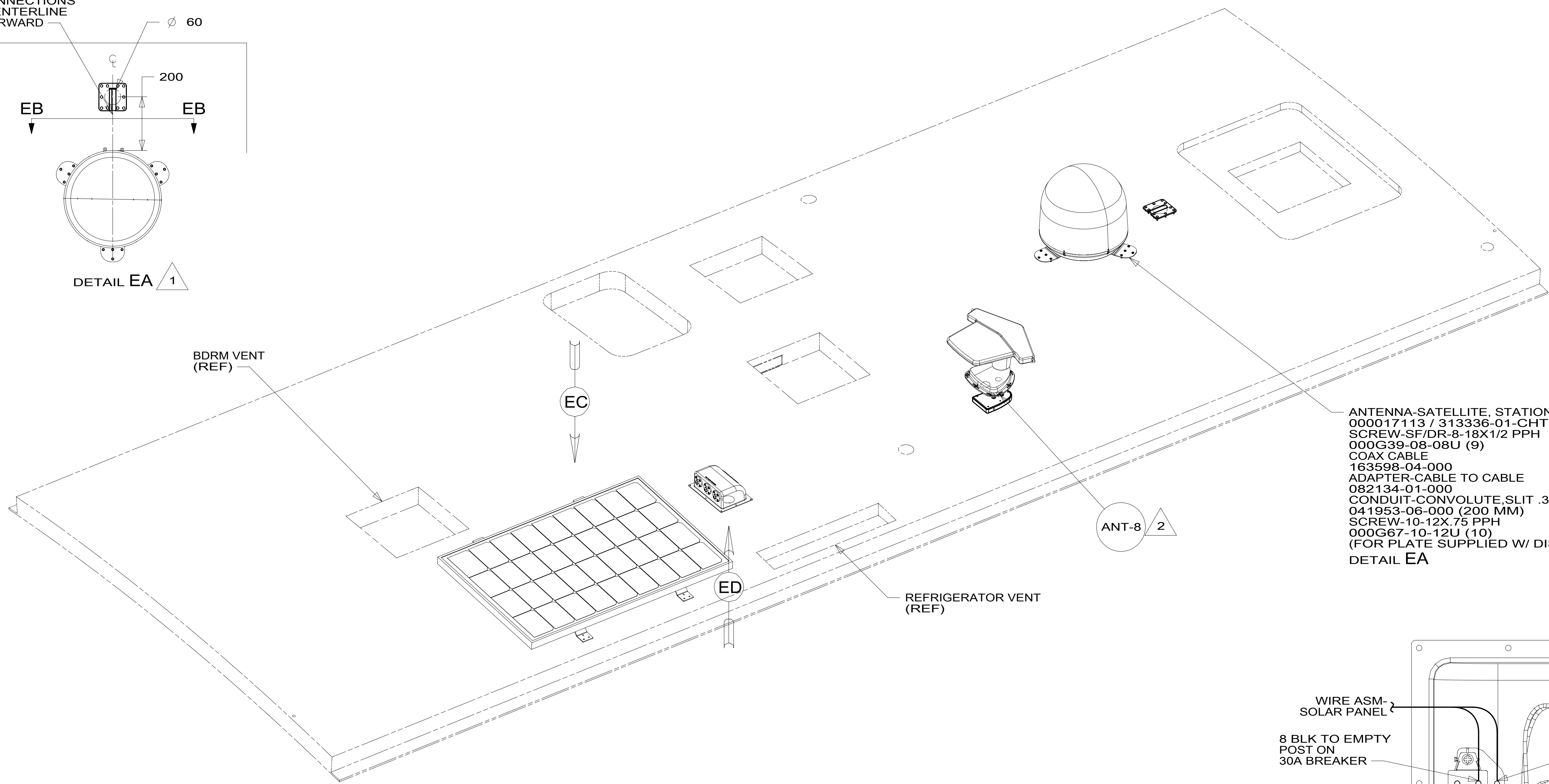
DESCRIPTION:
WIRING INSTL-BODY, 12V

SHEET: 4 OF 5	ITEM/PART NO: 000181587 / 30147701000	REV
------------------	------------------------------------------	-----

THE SATELLITE DISH WIRE CONNECTIONS ARE TO BE PLACED ON THE CENTERLINE OF THE MOTORHOME FACING FORWARD



DETAIL EA 1

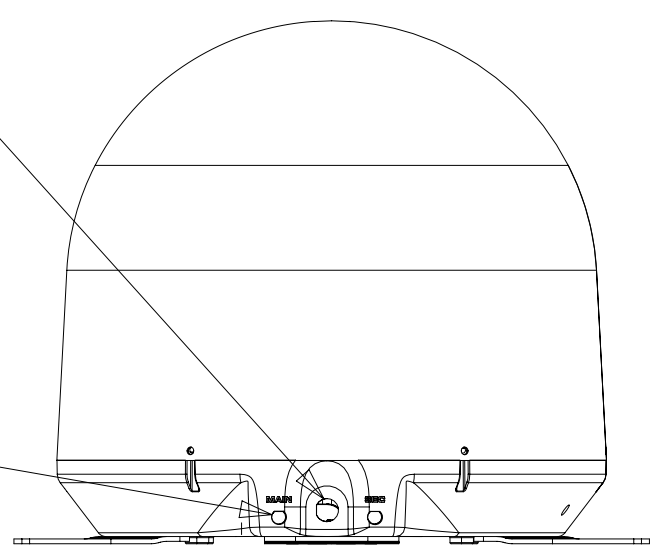


- ANTENNA-SATELLITE, STATIONARY
- 000017113 / 313336-01-CHT
- SCREW-SF/DR-8-18X1/2 PPH
- 000G39-08-08U (9)
- COAX CABLE
- 163598-04-000
- ADAPTER-CABLE TO CABLE
- 082134-01-000
- CONDUIT-CONVOLUTE, SLIT .375
- 041953-06-000 (200 MM)
- SCREW-10-12X.75 PPH
- 000G67-10-12U (10)
- (FOR PLATE SUPPLIED W/ DISH)
- DETAIL EA

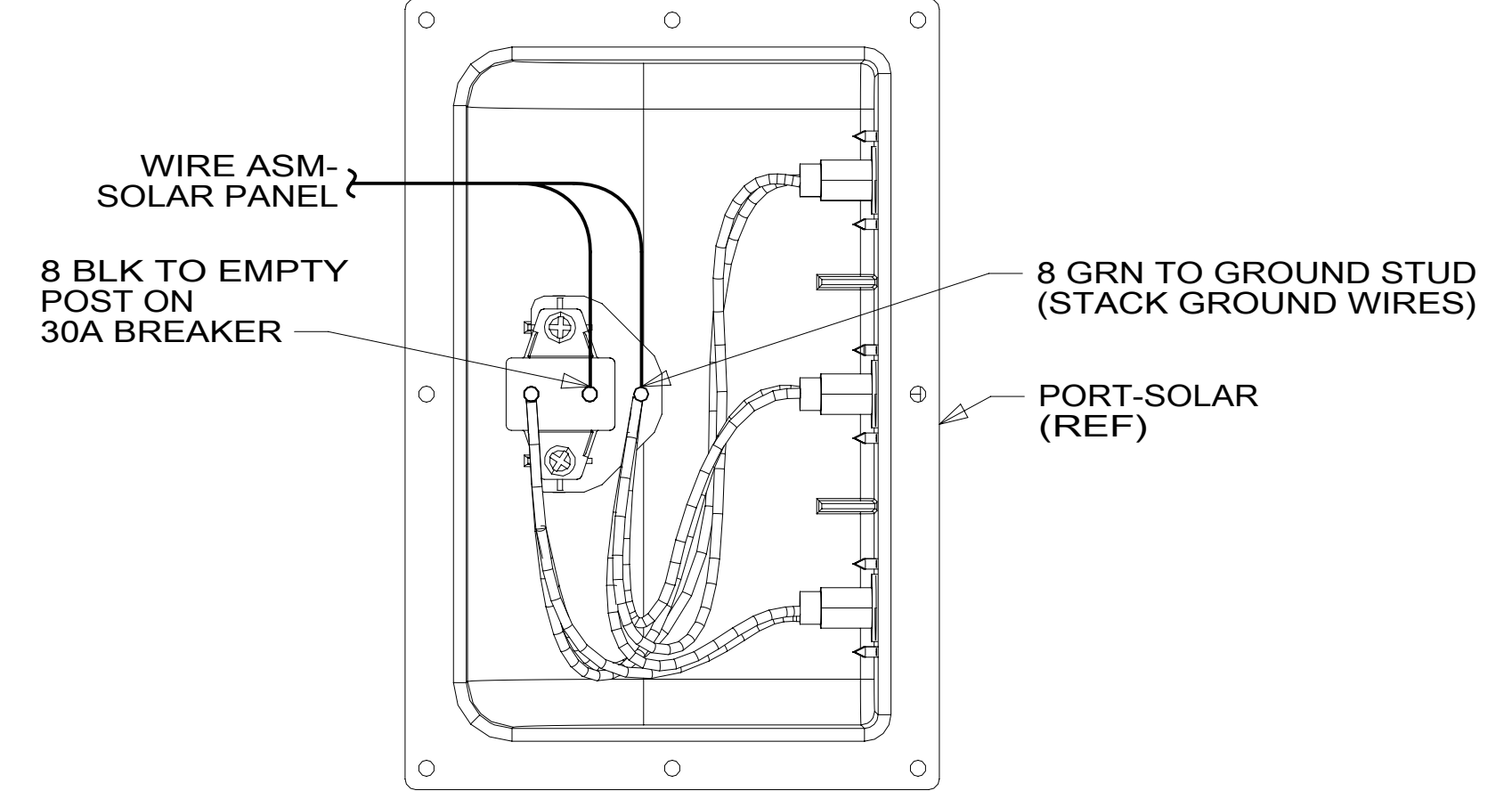
78K

CONNECT 2-PIN HOUSING FROM ROOF ASM TO SATELLITE DISH HERE AND ADD CONVOLUTED TUBING

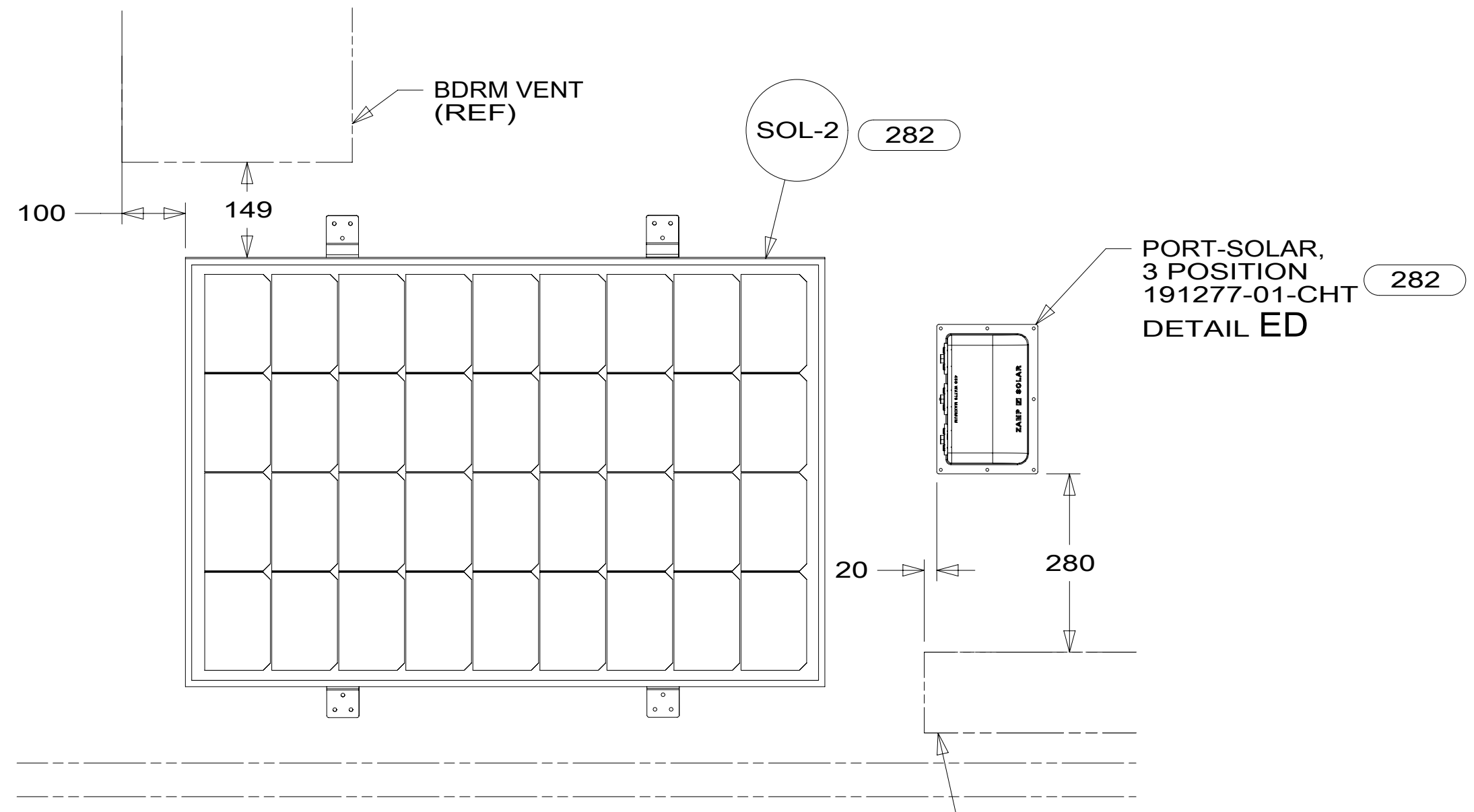
CONNECT CABLE ASM COAX (ORG) FROM ROOF ASM TO MAIN INPUT ON SATELLITE DISH



VIEW EB-EB



DETAIL ED 282



DETAIL EC

- NOTES:
- 2 SEE ANTENNA INSTALLATION MANUAL FOR CORRECT INSTALLATION PROCEDURE.
 - 1 REMOVE ALL SHIPPING RESTRAINTS AND FIRMLY INSERT THE SUPPLIED PLUGS INTO THE APPROPRIATE SIZED HOLES AS SPECIFIED IN THE INSTALLATION PROCESS.

FOR ELECTRICAL TORQUE SPECIFICATIONS SEE DWG NO. 128783-01-000

FOR ELECTRICAL CALLOUTS SEE DWG NO. 121339-01-000

- 282 SOLAR PANEL - 100 WATT
- 78K SATELLITE TV SYSTEM AUTO
- 265 CODES/STANDARDS-CSA/CMVSS
- 1B1 CODES/STANDARDS USA

DESCRIPTION:		
1B1 265		
WIRING INSTL-BODY, 12V		
SHEET:	ITEM/PART NO.:	REV:
5 OF 5	000181587 / 30147701000	