

SWITCH-DRAIN PUMP
108357-09-000
ACTUATOR
108356-27-CHT
CIRCUITS
DA,JG

SWITCH-WATER PUMP
108357-21-000
ACTUATOR
108356-23-CHT
CIRCUITS
JP,XXZ,YYF,JA

PORT-SOLAR,SINGLE
191558-01-000
SCREW
G39-10-16U (4)
DETAIL AD

3AA OR 282

SWITCH-LP SHUTOFF
108357-01-000
ACTUATOR
108356-01-CHT

5

PLATE-COAX
149557-03-CHT
SCREW
G39-08-08U (2)

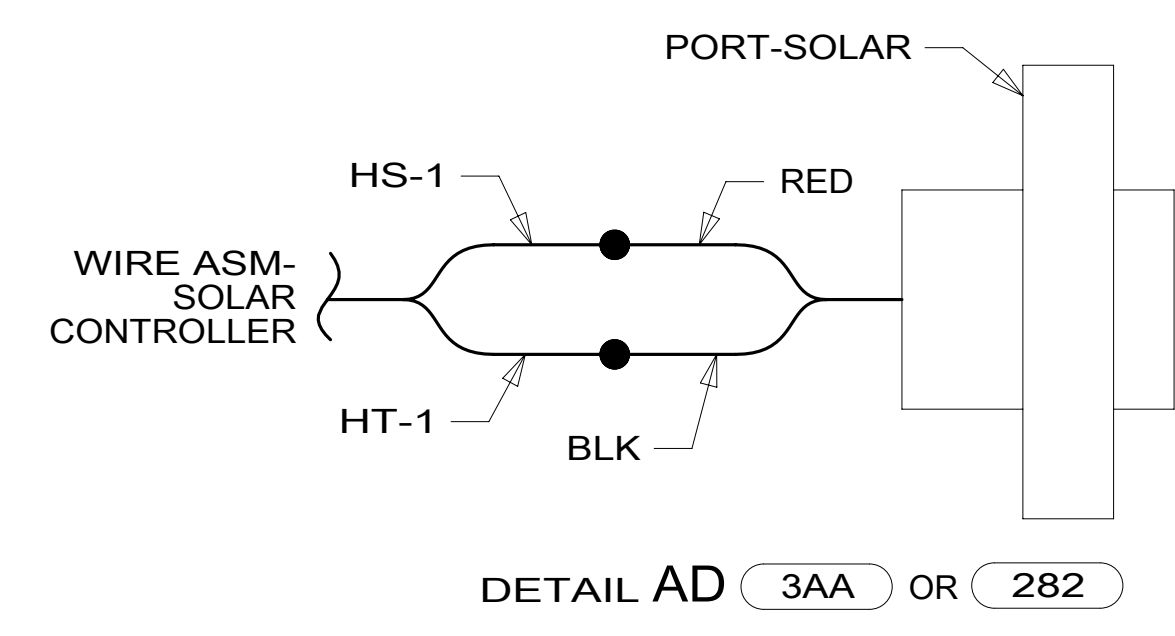
WIRE ASM-MAIN
HOLDING TANK
151317-05-000

3

PLATE-SERVICE
132862-04-CHT
132862-16-CHT
SCREW
G11-10-10U (4)

29W OR 3AA OR 282

VIEW AA



WIRE ASM-TANK HEATER
TO TANK HEATER PAD

4

WIRE ASM-AUX
HOLDING TANK
151316-03-000

3

WIRE ASM-
HEATER,TANKS
134551-11-000

4

PLUG
81211-06-000

AA

WIRE ASM-
WATER TANK
171218-01-000

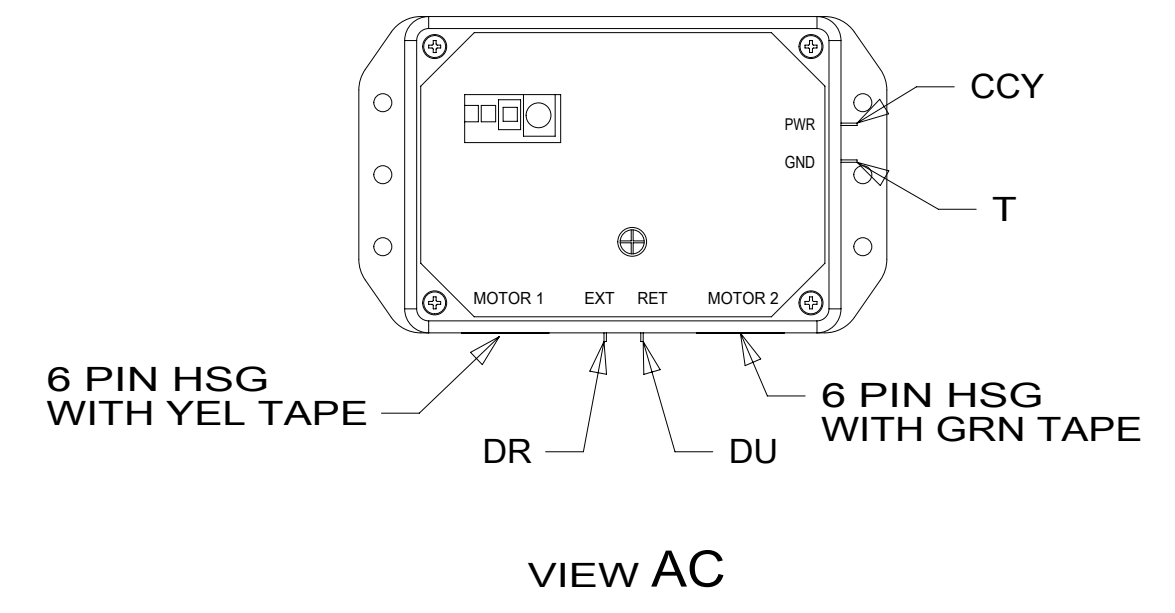
3

WIRE ASM-
COMPT DRAIN
186317-01-000
194853-01-000

29W OR 3AA OR 282

WIRE ASM-TANK HEATER
TO TANK HEATER PADS

4



- 5 SEE WIRING INSTL-CHASSIS FOR ADDITIONAL INFORMATION.
- 4 WIRE PASSES THROUGH FLOOR IN THIS AREA.
- 3 PLACE CROSS LOCATOR ON SENSORS OVER DIMPLES ON TANK.

2. ROUTE TANK SENSOR WIRES SO THEY DO NOT PASSOVER SENSORS. USE WIRE TIE MOUNT 155366-01-000 AND WIRE TIE 8343-01-000 AS NEEDED. TANK SURFACE MUST BE CLEANED USING ISOPROPYL ALCOHOL AND PRIMED WITH PRIMER 94.

1. AT MINIMUM ALL WIRES TO BE SUPPORTED AND SECURED PER CODE REQUIREMENTS. USE CLAMP 10495 OR 10497 OR WIRE TIE 8343 OR 108046 AND SCREW G67-XX-XXX OR G56-XX-XXX AS APPROPRIATE FOR INSTALLATION.

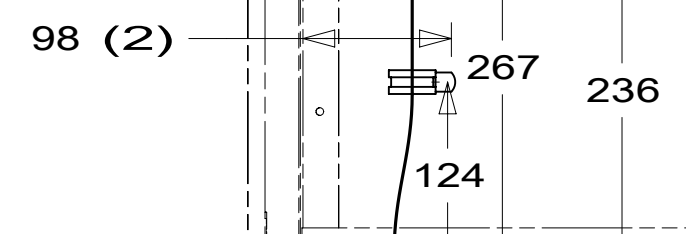
NOTES:

PANEL-RCP
151376-02-CHT
ADAPTOR
082134-01-000
NUT
082136-01-000
LABEL
157486-01-CHT
SCREW
G67-10-12U (4)

SEAL-TRIM
115870-01-000
(180 MM)

CLAMP
010497-10-000 (2)
SCREW
G39-08-12U (2)

CONTROL-SLIDEOUT
178451-01-000
SCREW
G39-08-12U (4)
DETAIL AC



FOR ELECTRICAL TORQUE SPECIFICATIONS SEE DWG NO. 128783-01-000

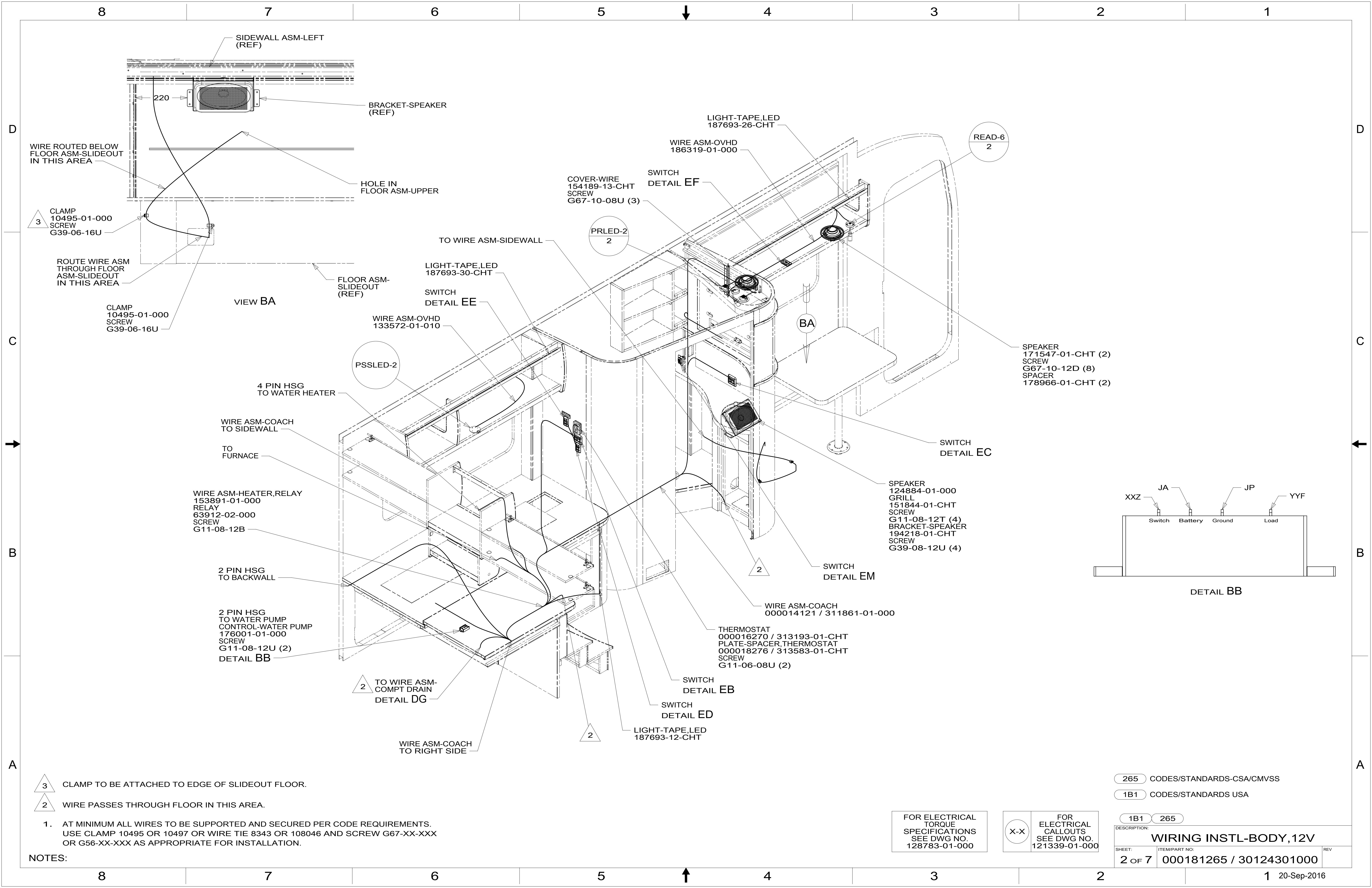
FOR ELECTRICAL CALLOUTS SEE DWG NO. 121339-01-000

- 282 SOLAR PANEL - 100 WATT
- 3AA SOLAR PANEL/BATT CHARGER SYS
- 29W SOLAR PANEL/BATTERY CHRG W/O
- 265 CODES/STANDARDS-CSA/CMVSS
- 1B1 CODES/STANDARDS USA

1B1 265

COPYRIGHT 2016 WINNEBAGO INDUSTRIES, INC.

DSNR:	ALL DIMENSIONS ARE IN MILLIMETERS
DFFR:	
UNSPECIFIED TOLERANCES:	MATERIAL:
WHOLE DIM (X) : 3	
ONE-PLACE (X.X) : 1.5	
TWO-PLACE (X.XX) : 0.50	
ANGLE : 1°	
REFER TO ES0018 FOR FASTENER TIGHTENING GUIDELINES	WEIGHT: (LBS) FIRST USED: 16 H25T
DESCRIPTION: WIRING INSTL-BODY, 12V	
SHEET: 1 OF 7	ITEM/PART NO: 000181265 / 30124301000
REF:	REV: 1 20-Sep-2016



WIRE ROUTED BELOW FLOOR ASM-SLIDEOUT IN THIS AREA

CLAMP 10495-01-000 SCREW G39-06-16U

ROUTE WIRE ASM THROUGH FLOOR ASM-SLIDEOUT IN THIS AREA

CLAMP 10495-01-000 SCREW G39-06-16U

- 3 CLAMP TO BE ATTACHED TO EDGE OF SLIDEOUT FLOOR.
- 2 WIRE PASSES THROUGH FLOOR IN THIS AREA.

1. AT MINIMUM ALL WIRES TO BE SUPPORTED AND SECURED PER CODE REQUIREMENTS. USE CLAMP 10495 OR 10497 OR WIRE TIE 8343 OR 108046 AND SCREW G67-XX-XXX OR G56-XX-XXX AS APPROPRIATE FOR INSTALLATION.

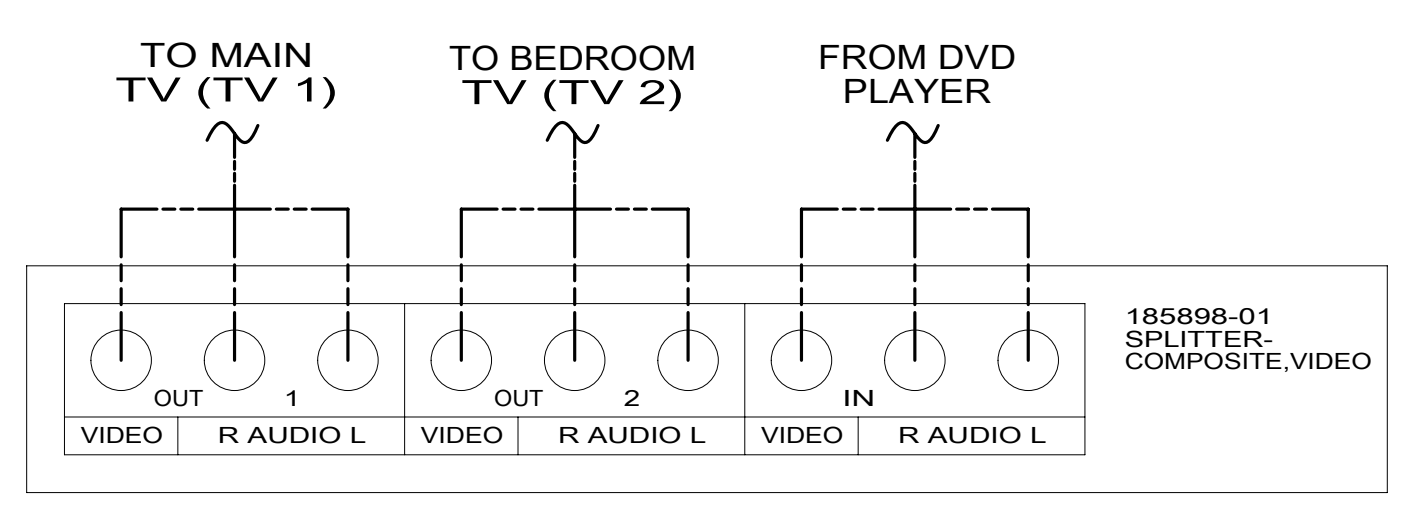
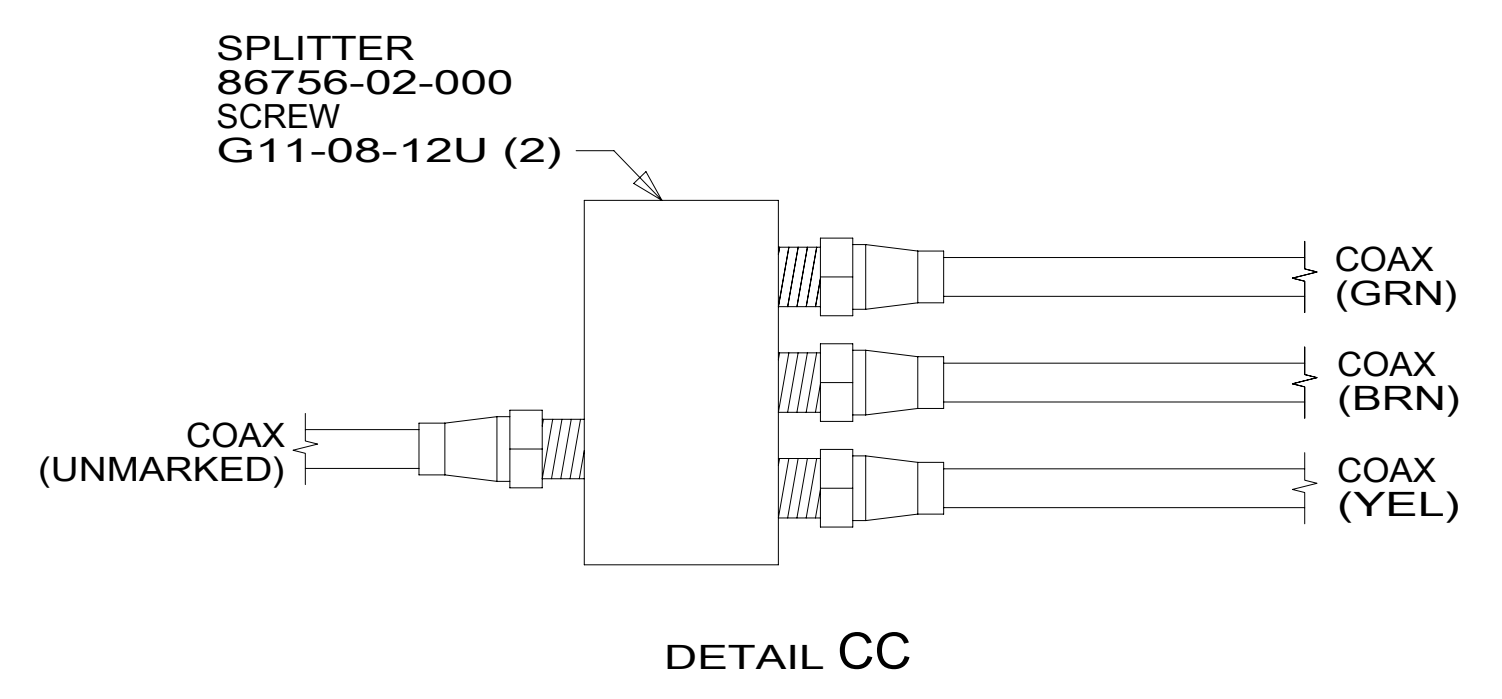
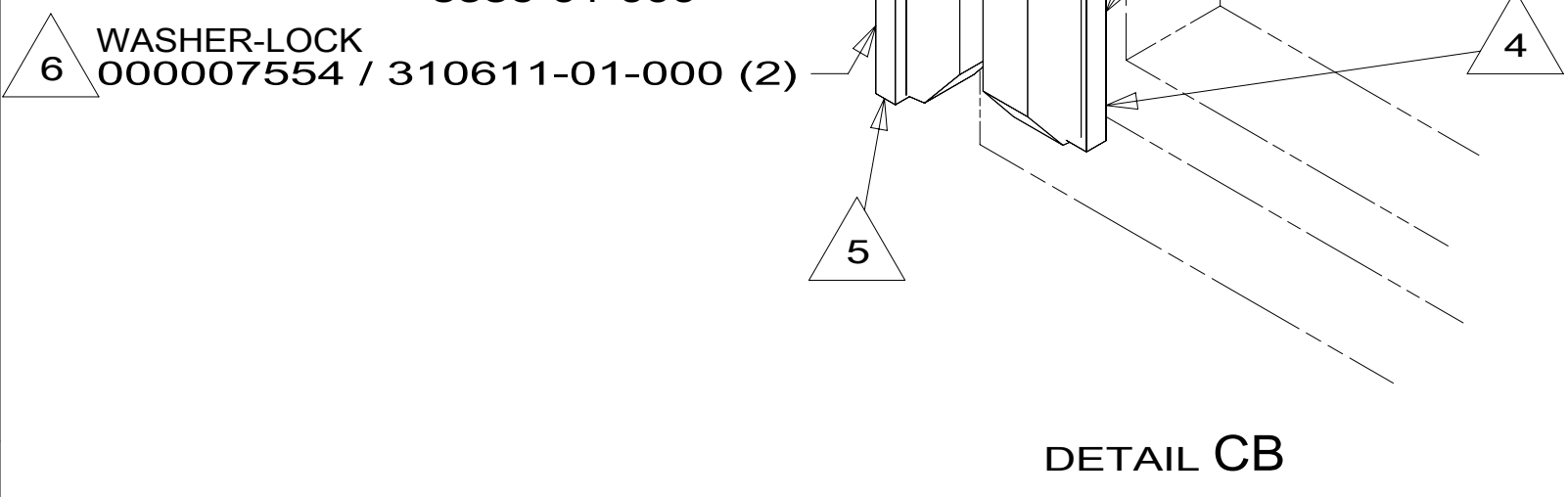
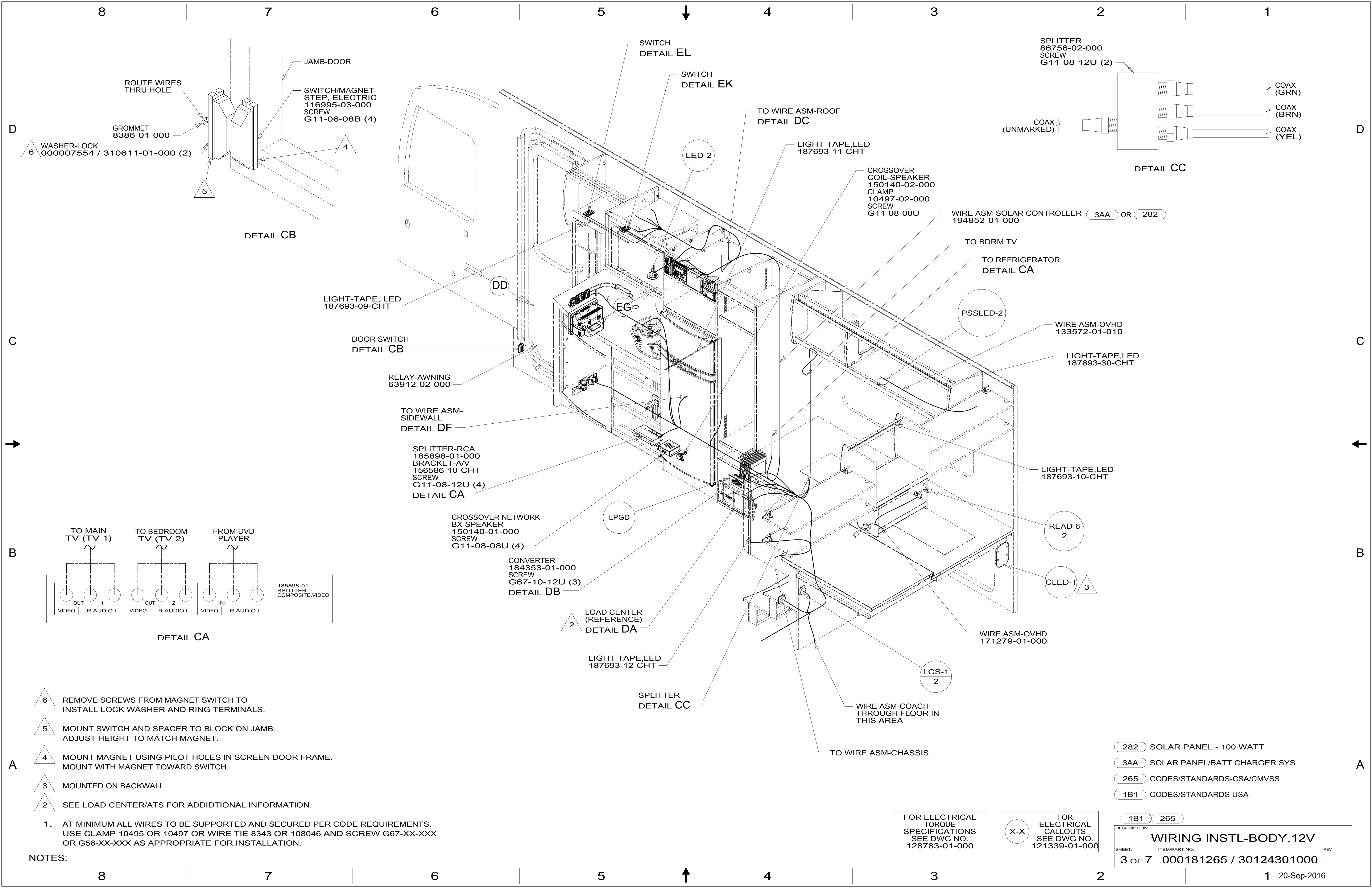
NOTES:

- 265 CODES/STANDARDS-CSA/CMVSS
- 1B1 CODES/STANDARDS USA

FOR ELECTRICAL TORQUE SPECIFICATIONS SEE DWG NO. 128783-01-000

FOR ELECTRICAL CALLOUTS SEE DWG NO. 121339-01-000

DESCRIPTION: 1B1 265		
WIRING INSTL-BODY, 12V		
SHEET: 2 OF 7	ITEM/PART NO: 000181265 / 30124301000	REV:



- 6 REMOVE SCREWS FROM MAGNET SWITCH TO INSTALL LOCK WASHER AND RING TERMINALS.
- 5 MOUNT SWITCH AND SPACER TO BLOCK ON JAMB. ADJUST HEIGHT TO MATCH MAGNET.
- 4 MOUNT MAGNET USING PILOT HOLES IN SCREEN DOOR FRAME. MOUNT WITH MAGNET TOWARD SWITCH.
- 3 MOUNTED ON BACKWALL.
- 2 SEE LOAD CENTER/ATS FOR ADDITIONAL INFORMATION.

1. AT MINIMUM ALL WIRES TO BE SUPPORTED AND SECURED PER CODE REQUIREMENTS. USE CLAMP 10495 OR 10497 OR WIRE TIE 8343 OR 108046 AND SCREW G67-XX-XXX OR G56-XX-XXX AS APPROPRIATE FOR INSTALLATION.

NOTES:

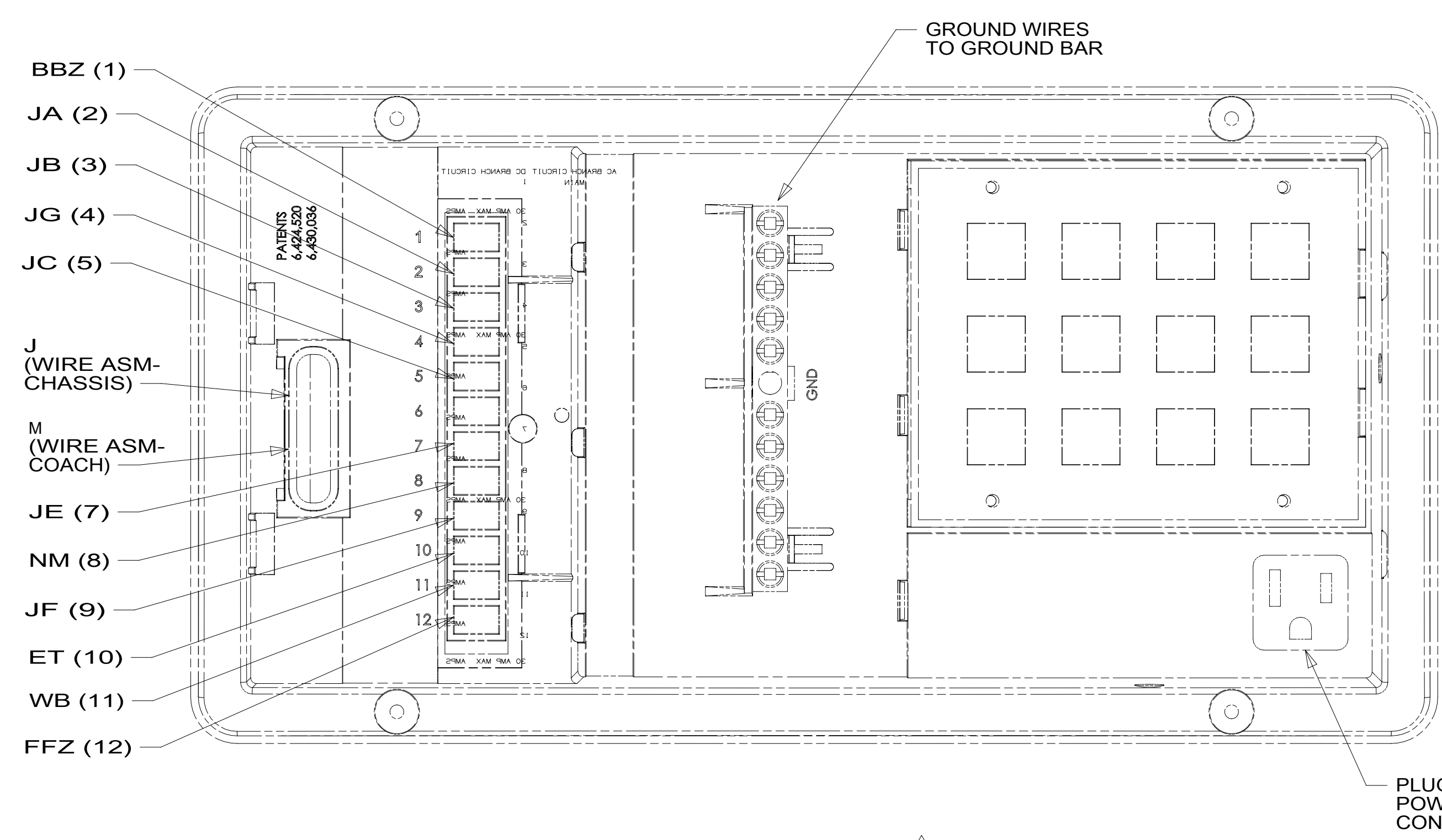
- 282 SOLAR PANEL - 100 WATT
- 3AA SOLAR PANEL/BATT CHARGER SYS
- 265 CODES/STANDARDS-CSA/CMVSS
- 1B1 CODES/STANDARDS USA

FOR ELECTRICAL TORQUE SPECIFICATIONS SEE DWG NO. 128783-01-000

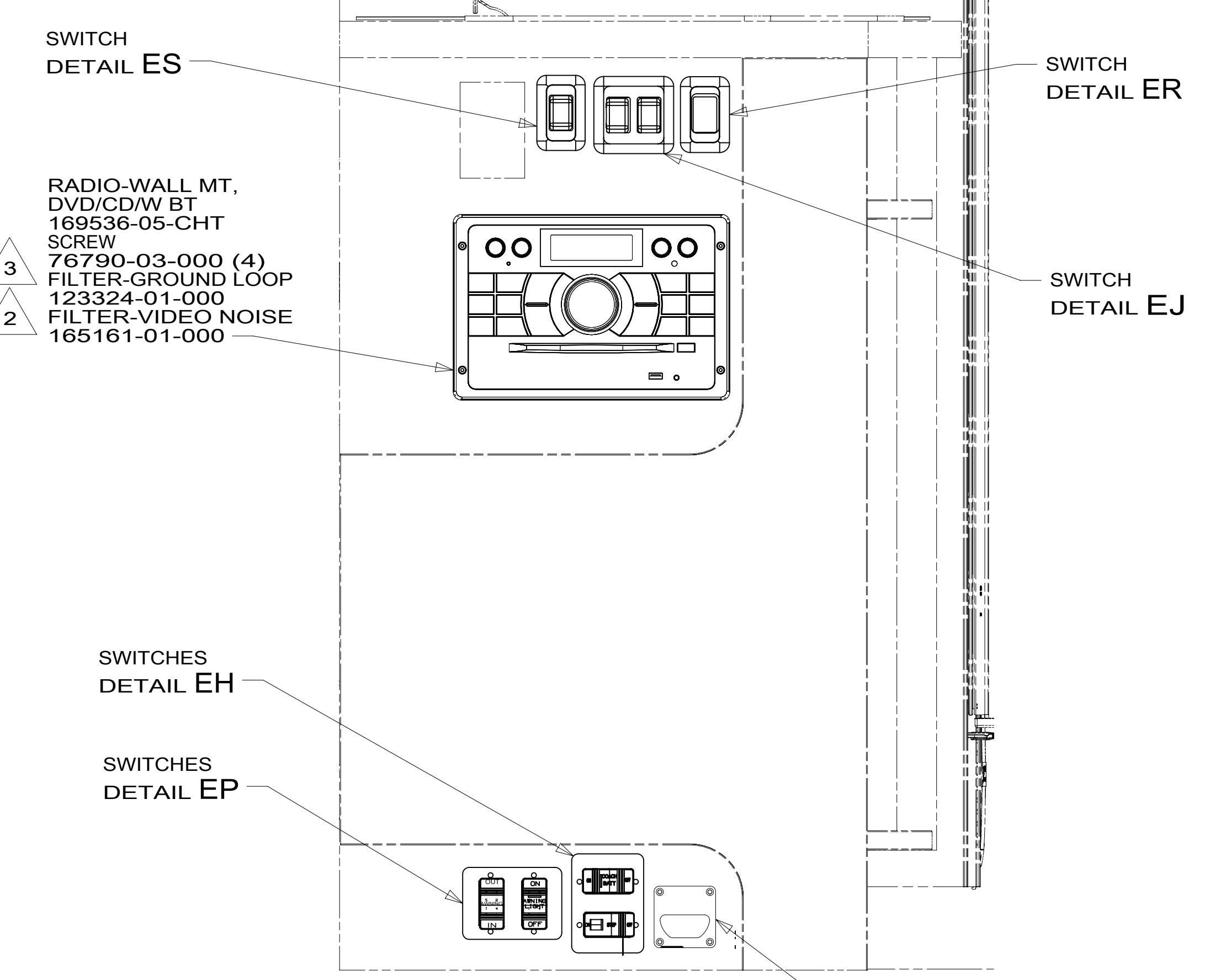
FOR ELECTRICAL CALLOUTS SEE DWG NO. 121339-01-000

DESCRIPTION: 1B1 265		
WIRING INSTL-BODY, 12V		
SHEET: 3 OF 7	ITEM/PART NO: 000181265 / 30124301000	REV:

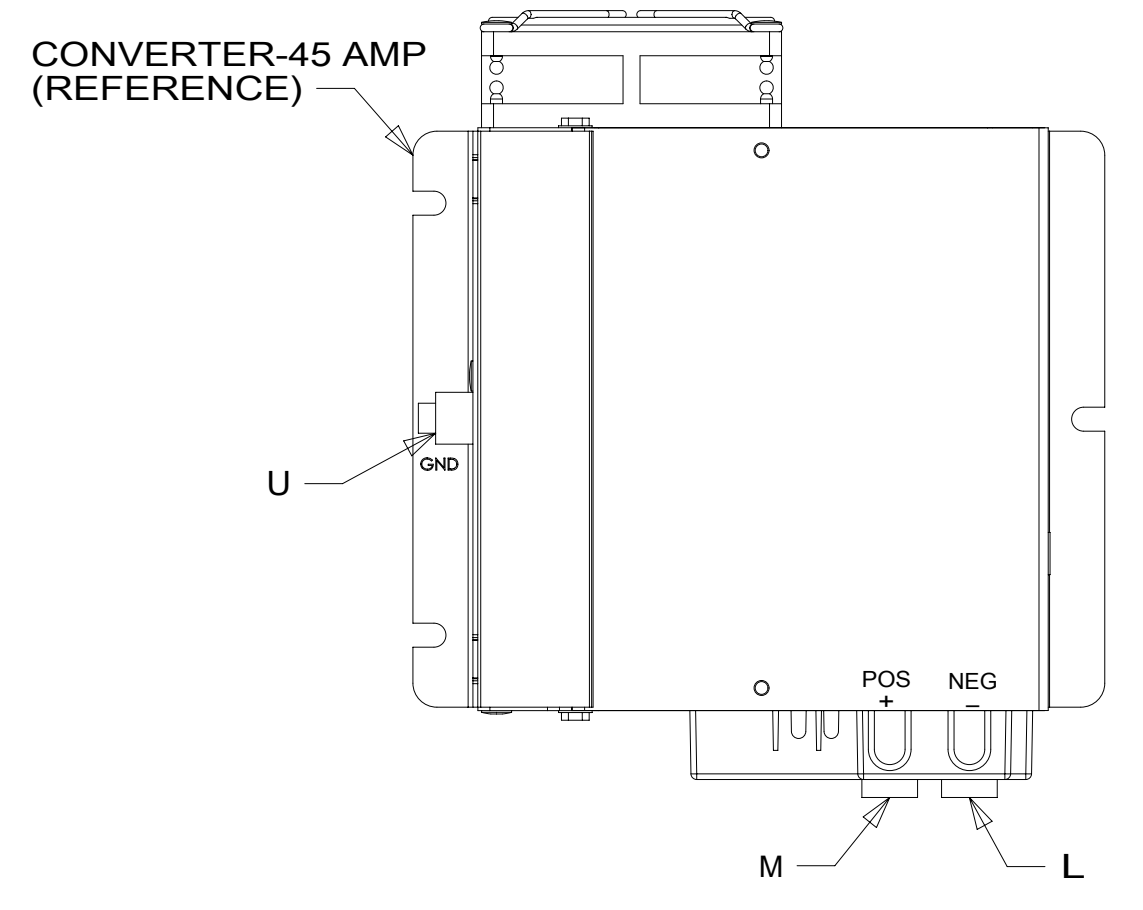
8 7 6 5 4 3 2 1



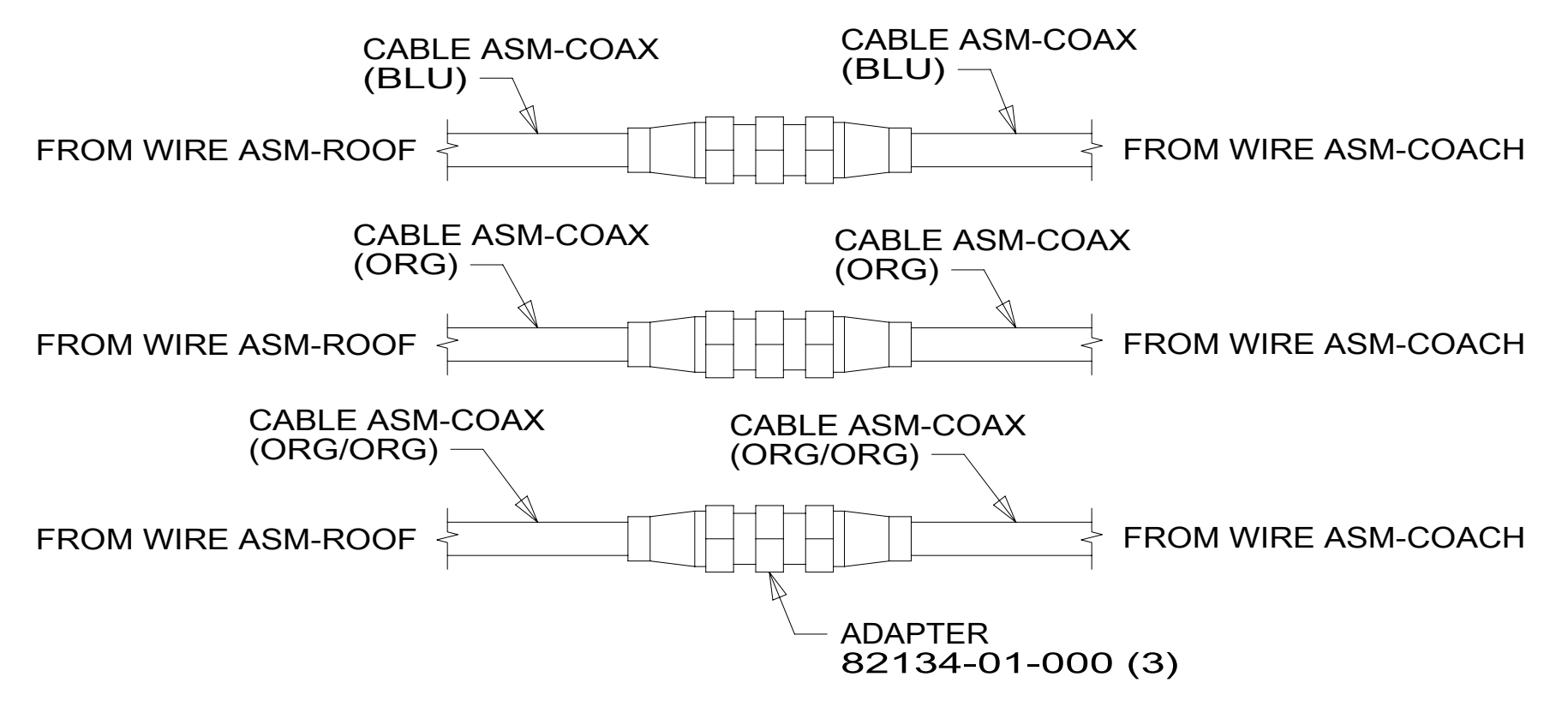
DETAIL DA 1



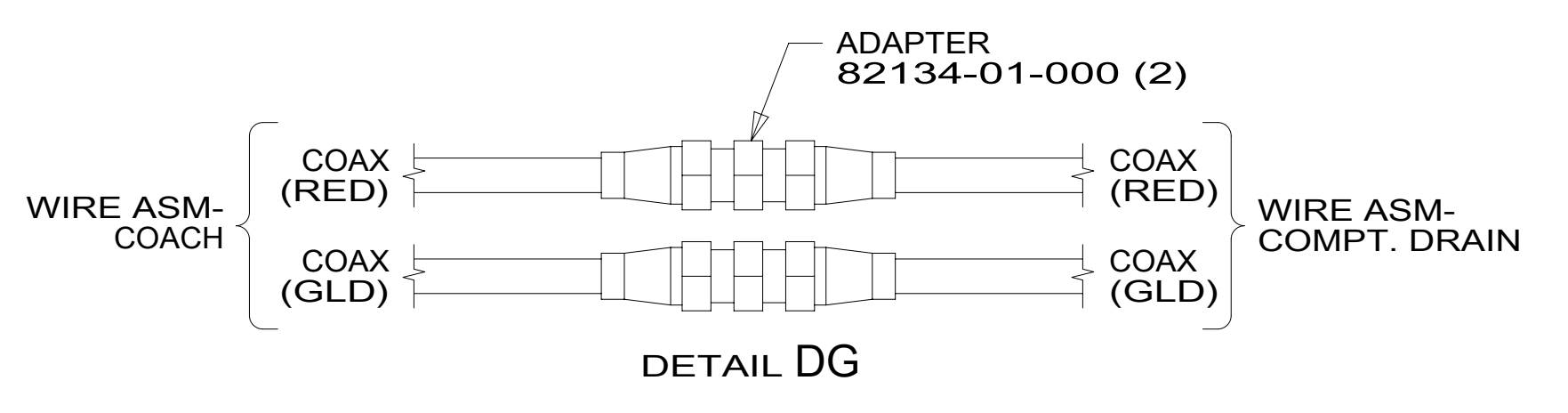
DETAIL DD



DETAIL DB



DETAIL DC



DETAIL DG

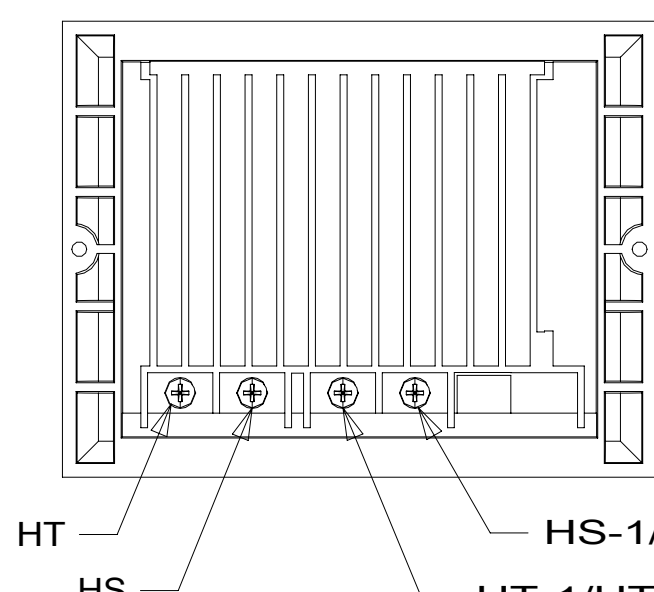
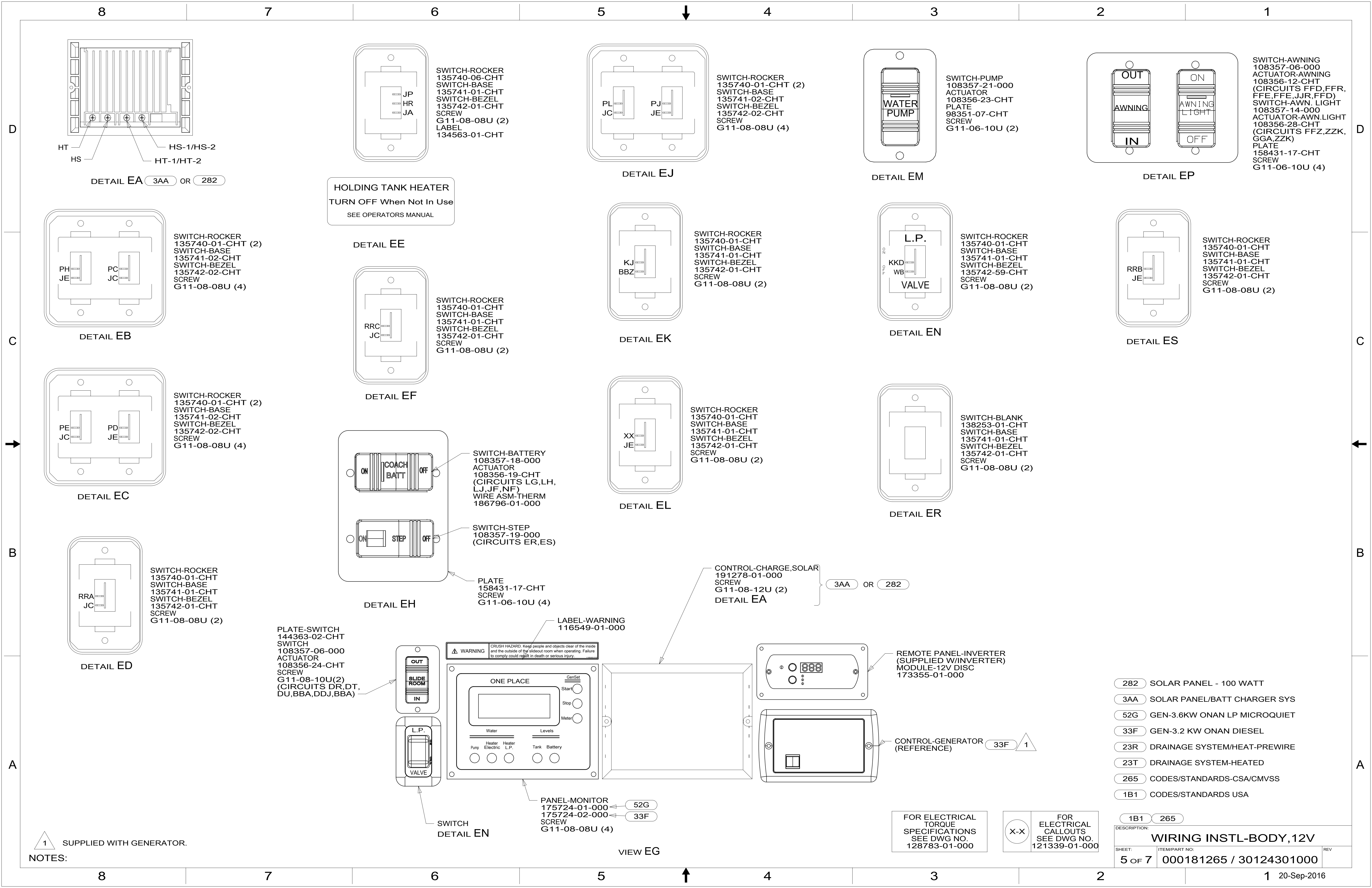
- NOTES:
- 3 CONNECT IN-LINE WITH RED AND WHITE AUDIO CABLES. WRAP BOTH ENDS WITH TAPE 8363-01-000 TO SECURE TO WIRE ASM.
 - 2 CONNECT IN-LINE WITH YELLOW VIDEO CABLE. WRAP BOTH ENDS WITH TAPE 8363-01-000 TO SECURE TO WIRE ASM.
 - 1 FOR REFERENCE ONLY. SEE LOAD CENTER/ATS ASM FOR ADDITIONAL INFORMATION.

FOR ELECTRICAL TORQUE SPECIFICATIONS SEE DWG NO. 128783-01-000

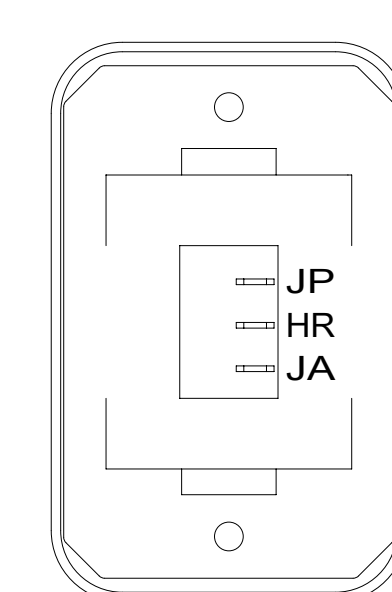
FOR ELECTRICAL CALLOUTS SEE DWG NO. 121339-01-000

- 265 CODES/STANDARDS-CSA/CMVSS
- 1B1 CODES/STANDARDS USA

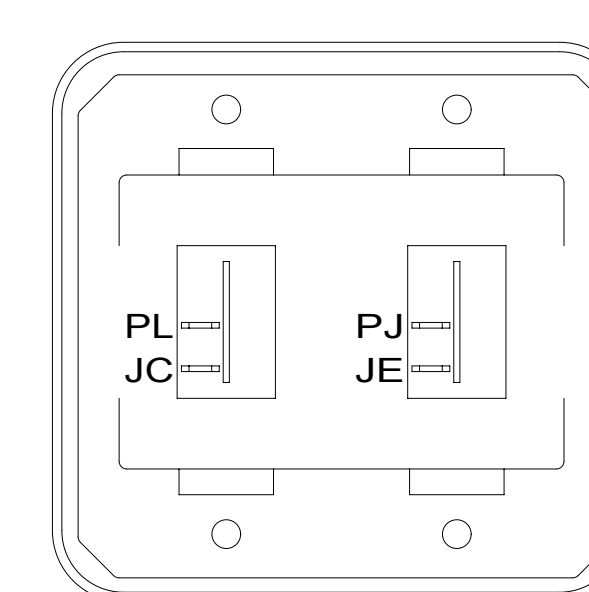
DESCRIPTION:		1B1 265	
WIRING INSTL-BODY, 12V			
SHEET:	ITEM/PART NO.:	REV	
4 OF 7	000181265 / 30124301000		



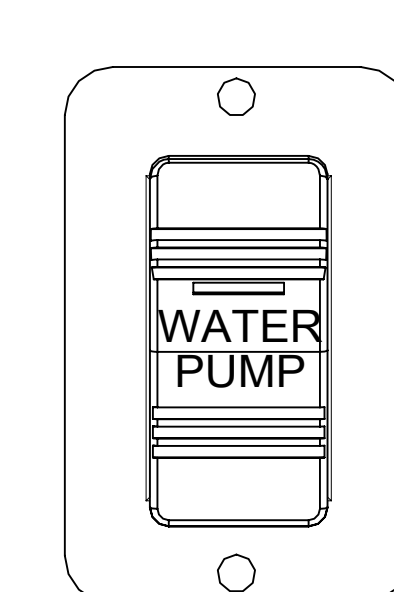
DETAIL EA (3AA) OR (282)



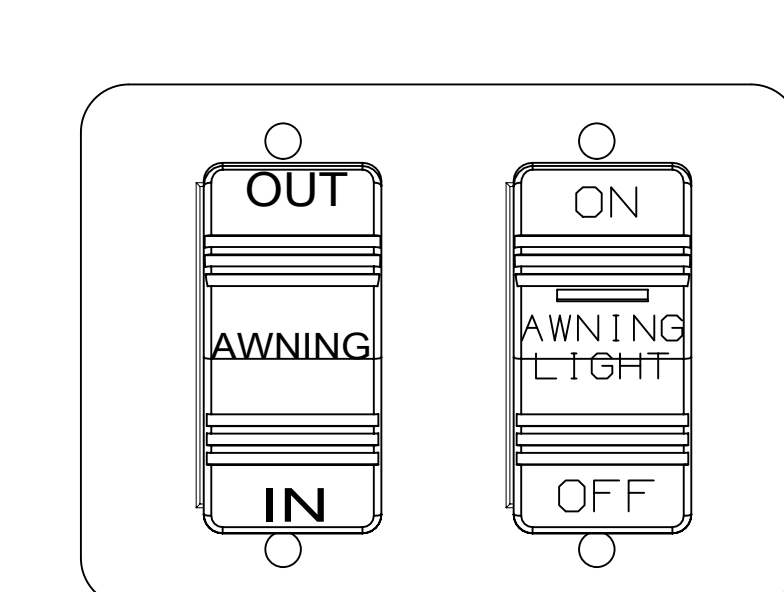
SWITCH-ROCKER
135740-06-CHT
SWITCH-BASE
135741-01-CHT
SWITCH-BEZEL
135742-01-CHT
SCREW
G11-08-08U (2)
LABEL
134563-01-CHT



SWITCH-ROCKER
135740-01-CHT (2)
SWITCH-BASE
135741-02-CHT
SWITCH-BEZEL
135742-02-CHT
SCREW
G11-08-08U (4)

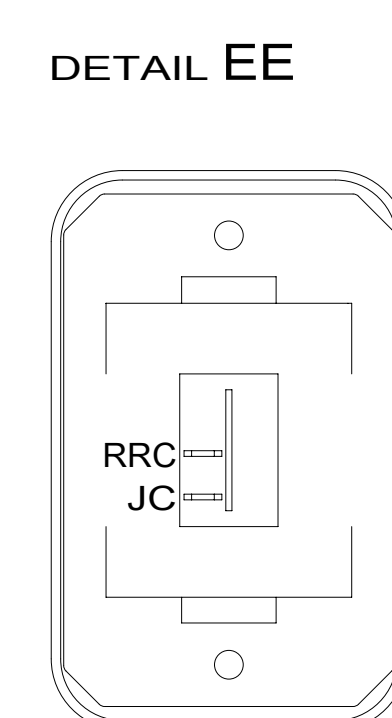


SWITCH-PUMP
108357-21-000
ACTUATOR
108356-23-CHT
PLATE
98351-07-CHT
SCREW
G11-06-10U (2)

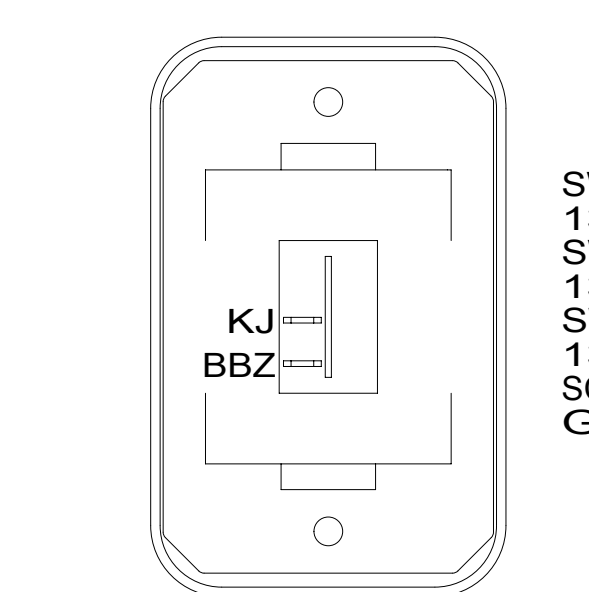


SWITCH-AWNING
108357-06-000
ACTUATOR-AWNING
108356-12-CHT
(CIRCUITS FFD,FFR,
FFE,FFE,JJR,FFD)
SWITCH-AWN. LIGHT
108357-14-000
ACTUATOR-AWN.LIGHT
108356-28-CHT
(CIRCUITS FFZ,ZZK,
GGA,ZZK)
PLATE
158431-17-CHT
SCREW
G11-06-10U (4)

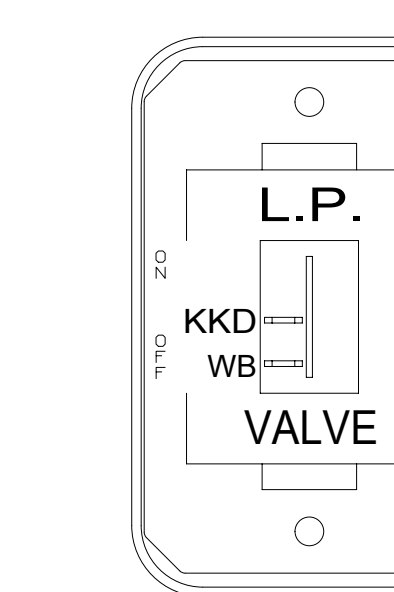
HOLDING TANK HEATER
TURN OFF When Not In Use
SEE OPERATORS MANUAL



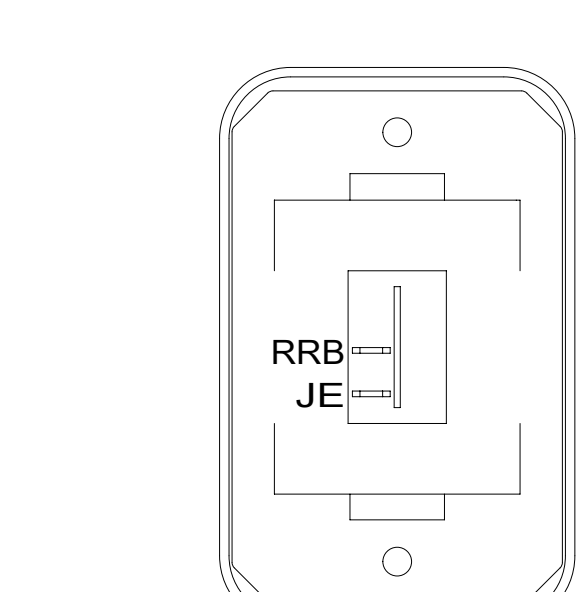
SWITCH-ROCKER
135740-01-CHT
SWITCH-BASE
135741-01-CHT
SWITCH-BEZEL
135742-01-CHT
SCREW
G11-08-08U (2)



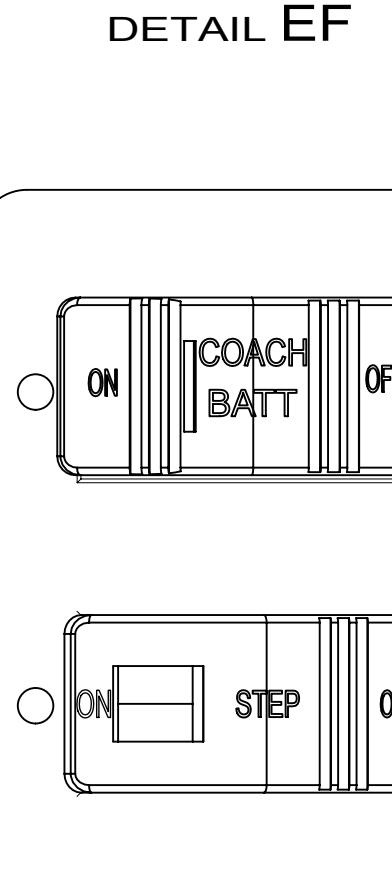
SWITCH-ROCKER
135740-01-CHT
SWITCH-BASE
135741-01-CHT
SWITCH-BEZEL
135742-01-CHT
SCREW
G11-08-08U (2)



SWITCH-ROCKER
135740-01-CHT
SWITCH-BASE
135741-01-CHT
SWITCH-BEZEL
135742-59-CHT
SCREW
G11-08-08U (2)

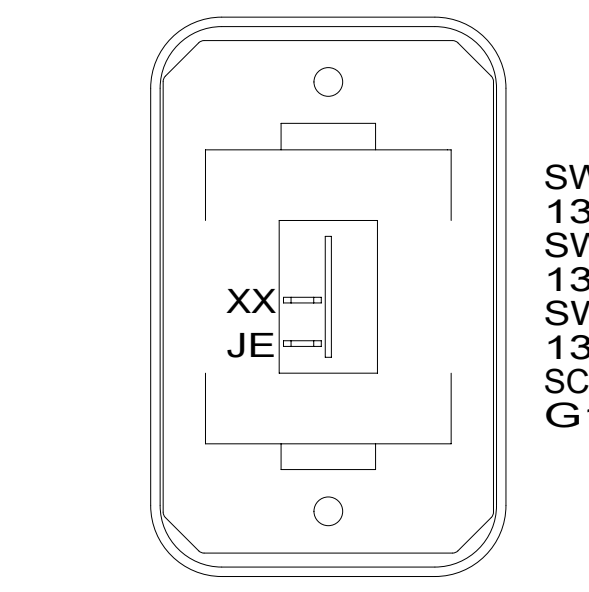


SWITCH-ROCKER
135740-01-CHT
SWITCH-BASE
135741-01-CHT
SWITCH-BEZEL
135742-01-CHT
SCREW
G11-08-08U (2)

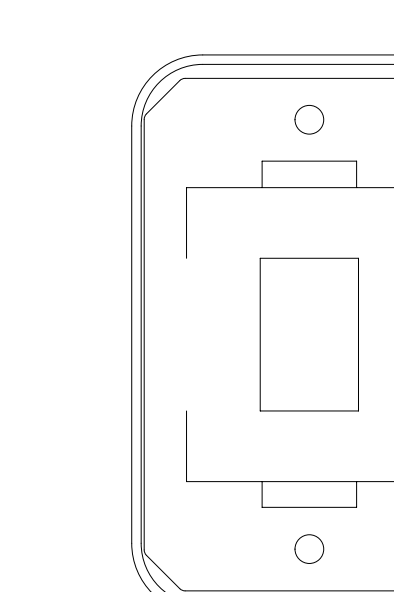


SWITCH-BATTERY
108357-18-000
ACTUATOR
108356-19-CHT
(CIRCUITS LG,LH,
LJ,JF,NF)
WIRE ASM-THERM
186796-01-000

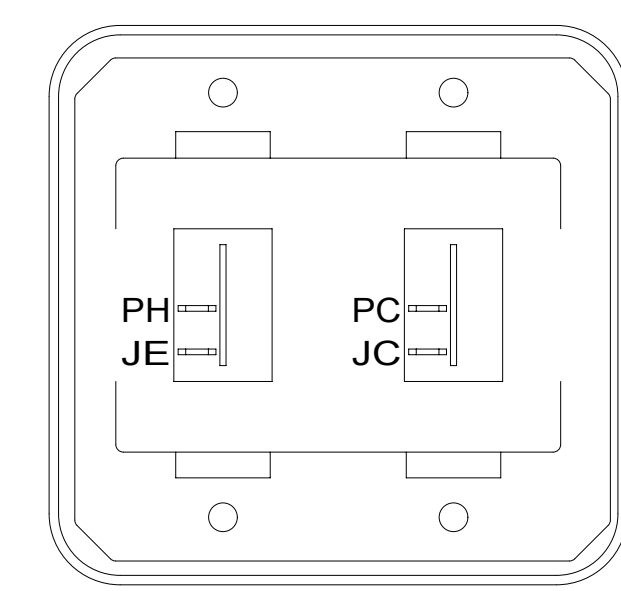
SWITCH-STEP
108357-19-000
(CIRCUITS ER,ES)



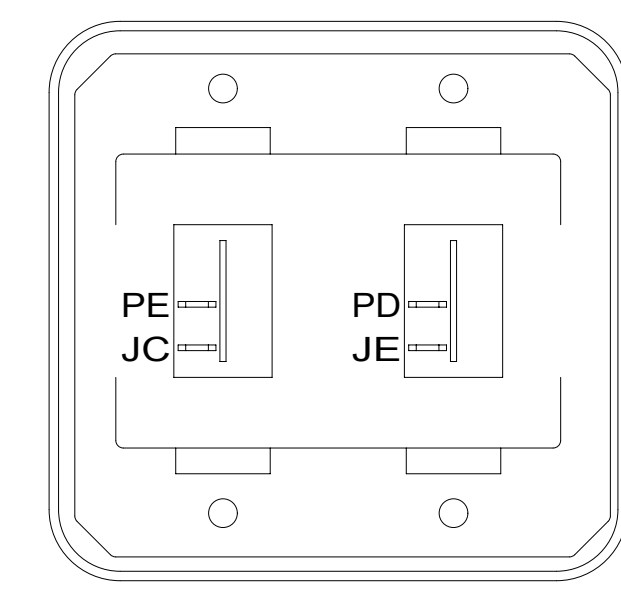
SWITCH-BLANK
138253-01-CHT
SWITCH-BASE
135741-01-CHT
SWITCH-BEZEL
135742-01-CHT
SCREW
G11-08-08U (2)



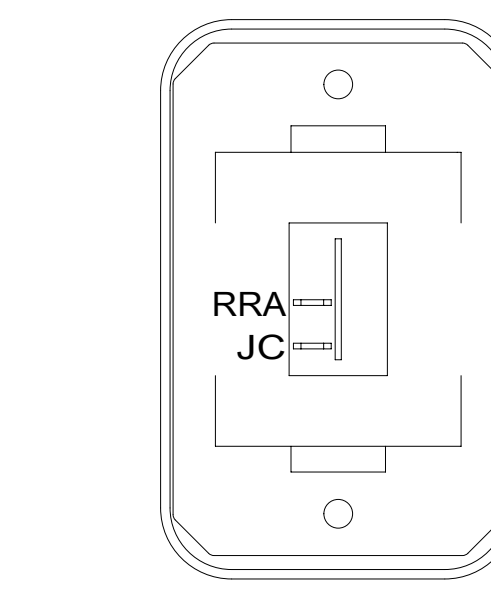
SWITCH-BLANK
138253-01-CHT
SWITCH-BASE
135741-01-CHT
SWITCH-BEZEL
135742-01-CHT
SCREW
G11-08-08U (2)



SWITCH-ROCKER
135740-01-CHT (2)
SWITCH-BASE
135741-02-CHT
SWITCH-BEZEL
135742-02-CHT
SCREW
G11-08-08U (4)



SWITCH-ROCKER
135740-01-CHT (2)
SWITCH-BASE
135741-02-CHT
SWITCH-BEZEL
135742-02-CHT
SCREW
G11-08-08U (4)



SWITCH-ROCKER
135740-01-CHT
SWITCH-BASE
135741-01-CHT
SWITCH-BEZEL
135742-01-CHT
SCREW
G11-08-08U (2)

PLATE-SWITCH
144363-02-CHT
SWITCH
108357-06-000
ACTUATOR
108356-24-CHT
SCREW
G11-08-10U(2)
(CIRCUITS DR,DT,
DU,BBA,DDJ,BBA)

PLATE
158431-17-CHT
SCREW
G11-06-10U (4)

LABEL-WARNING
116549-01-000

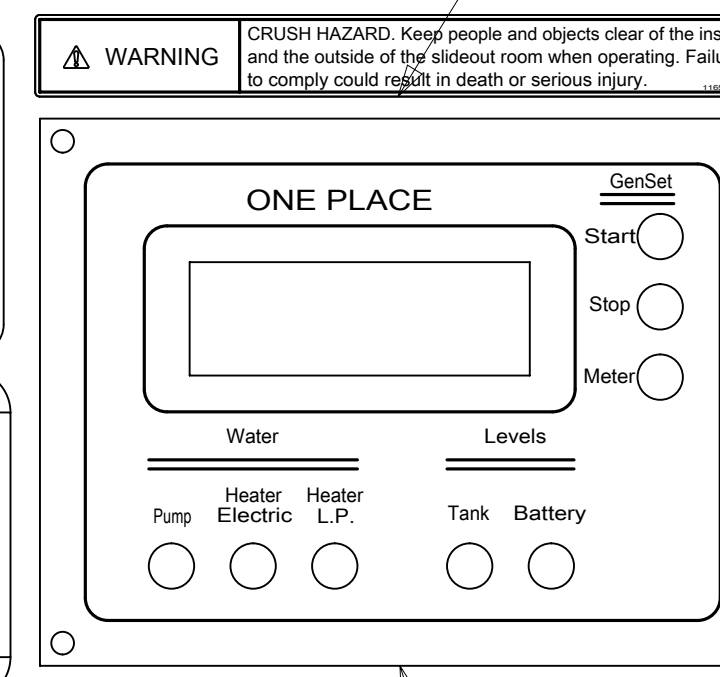
CONTROL-CHARGE,SOLAR
191278-01-000
SCREW
G11-08-12U (2)
DETAIL EA

(3AA) OR (282)

REMOTE PANEL-INVERTER
(SUPPLIED W/INVERTER)
MODULE-12V DISC
173355-01-000

CONTROL-GENERATOR
(REFERENCE)

(33F) 1



PANEL-MONITOR
175724-01-000 (52G)
175724-02-000 (33F)
SCREW
G11-08-08U (4)

VIEW EG

NOTES:
1 SUPPLIED WITH GENERATOR.

FOR ELECTRICAL
TORQUE
SPECIFICATIONS
SEE DWG NO.
128783-01-000

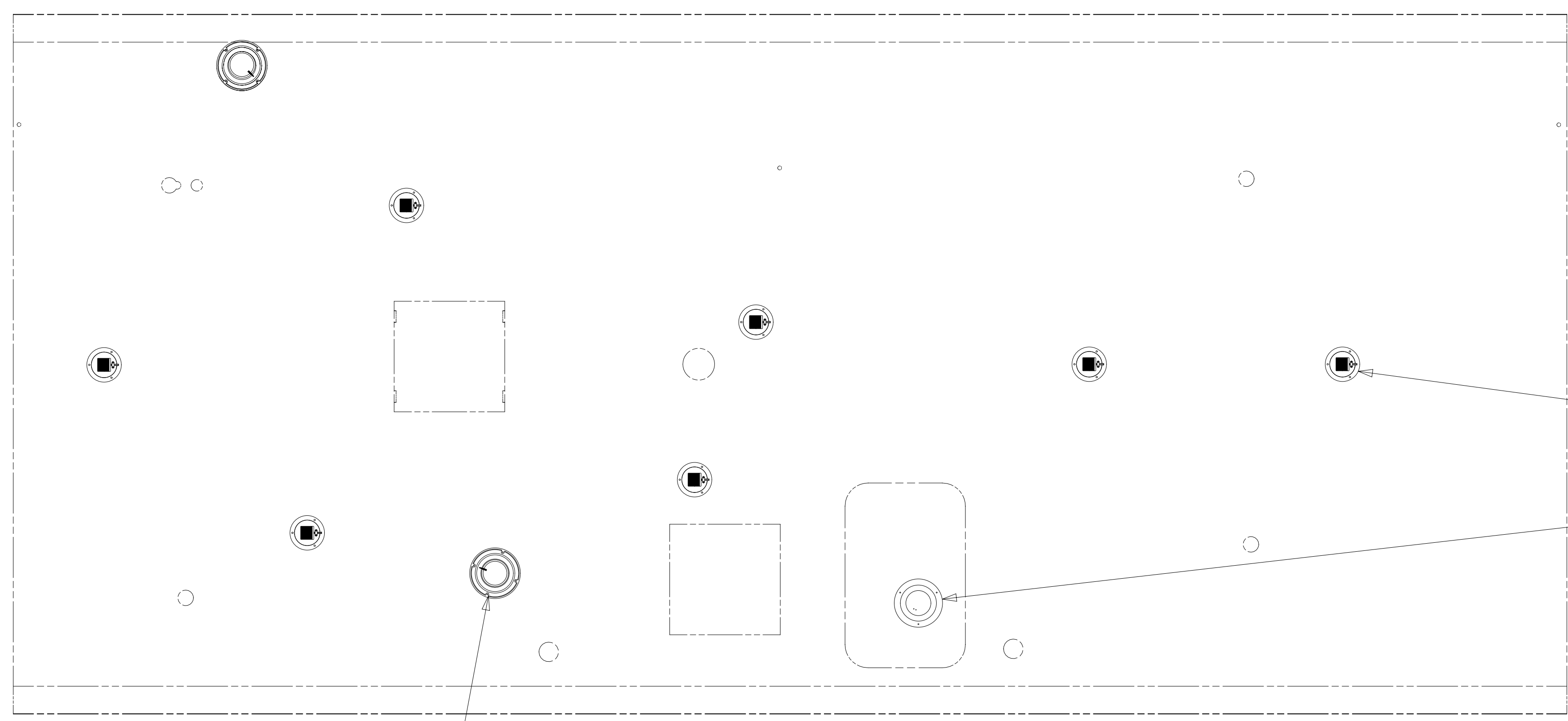
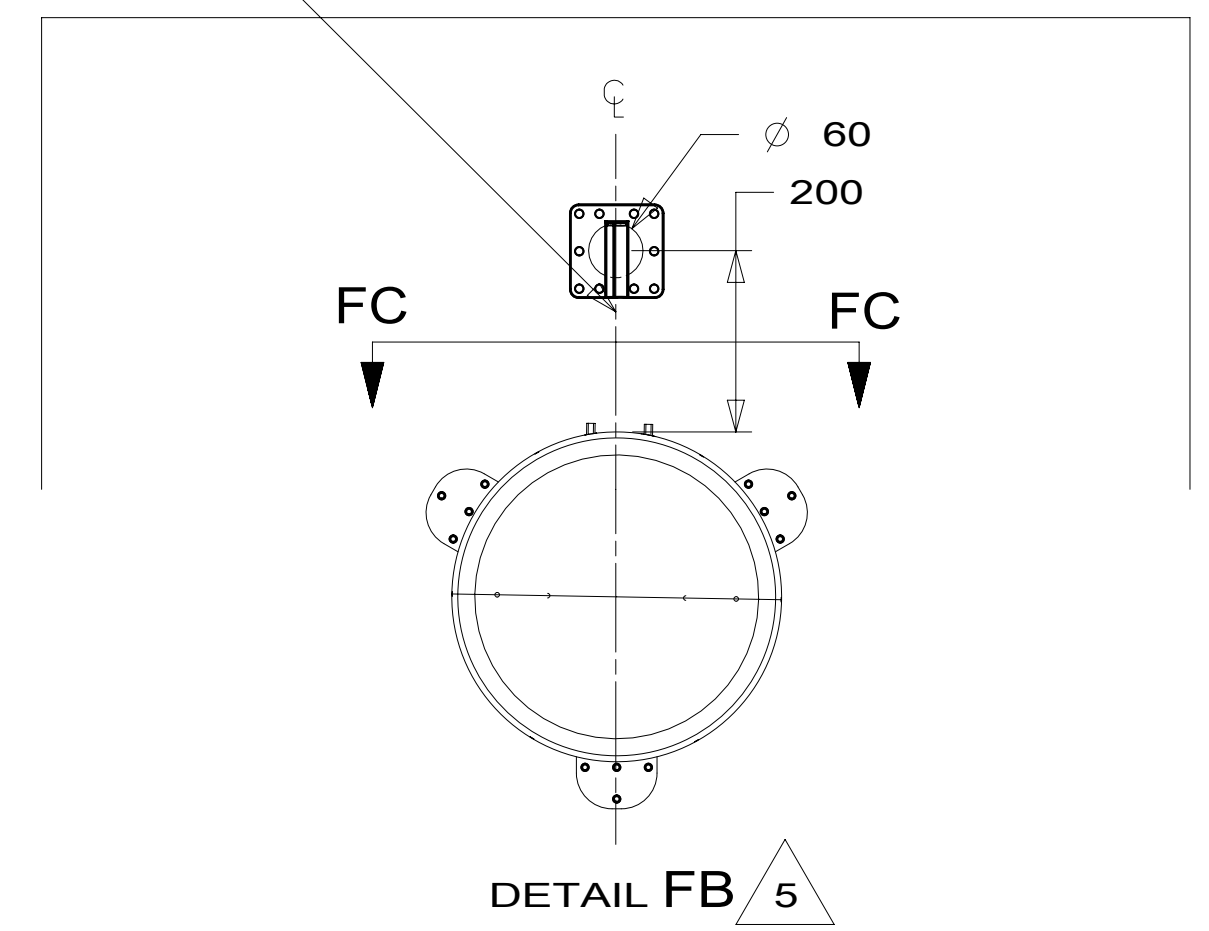
FOR ELECTRICAL
CALLOUTS
SEE DWG NO.
121339-01-000

- (282) SOLAR PANEL - 100 WATT
- (3AA) SOLAR PANEL/BATT CHARGER SYS
- (52G) GEN-3.6KW ONAN LP MICROQUIET
- (33F) GEN-3.2 KW ONAN DIESEL
- (23R) DRAINAGE SYSTEM/HEAT-PREWIRED
- (23T) DRAINAGE SYSTEM-HEATED
- (265) CODES/STANDARDS-CSA/CMVSS
- (1B1) CODES/STANDARDS USA

DESCRIPTION: WIRING INSTL-BODY, 12V	
SHEET: 5 OF 7	ITEM/PART NO: 000181265 / 30124301000
REV 1 20-Sep-2016	

8 7 6 5 4 3 2 1

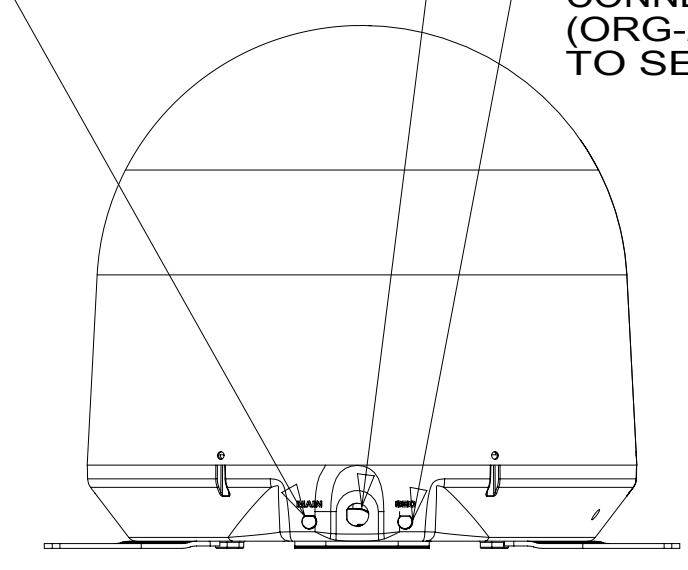
THE SATELLITE DISH WIRE CONNECTIONS ARE TO BE PLACED ON THE CENTERLINE OF THE MOTORHOME FACING FORWARD



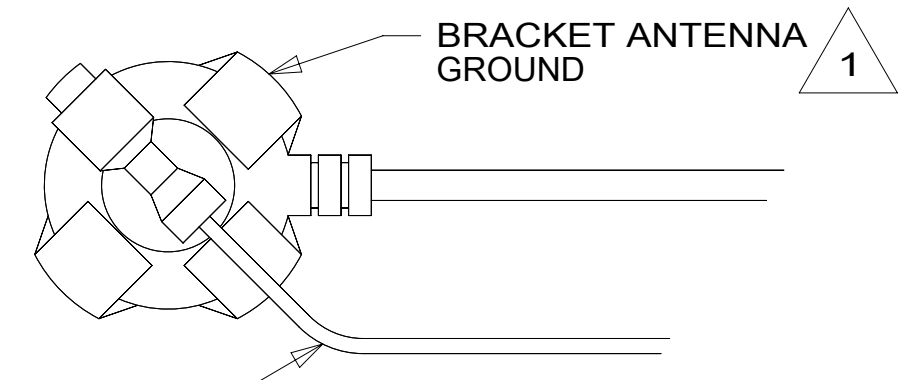
CONNECT 2-PIN HOUSING FROM ROOF ASM TO SATELLITE DISH HERE AND ADD CONVOLUTED TUBING

CONNECT CABLE ASM COAX (ORG) FROM ROOF ASM TO MAIN INPUT ON SATELLITE DISH

CONNECT CABLE ASM COAX (ORG-2) FROM ROOF ASM TO SEC INPUT ON SATELLITE DISH



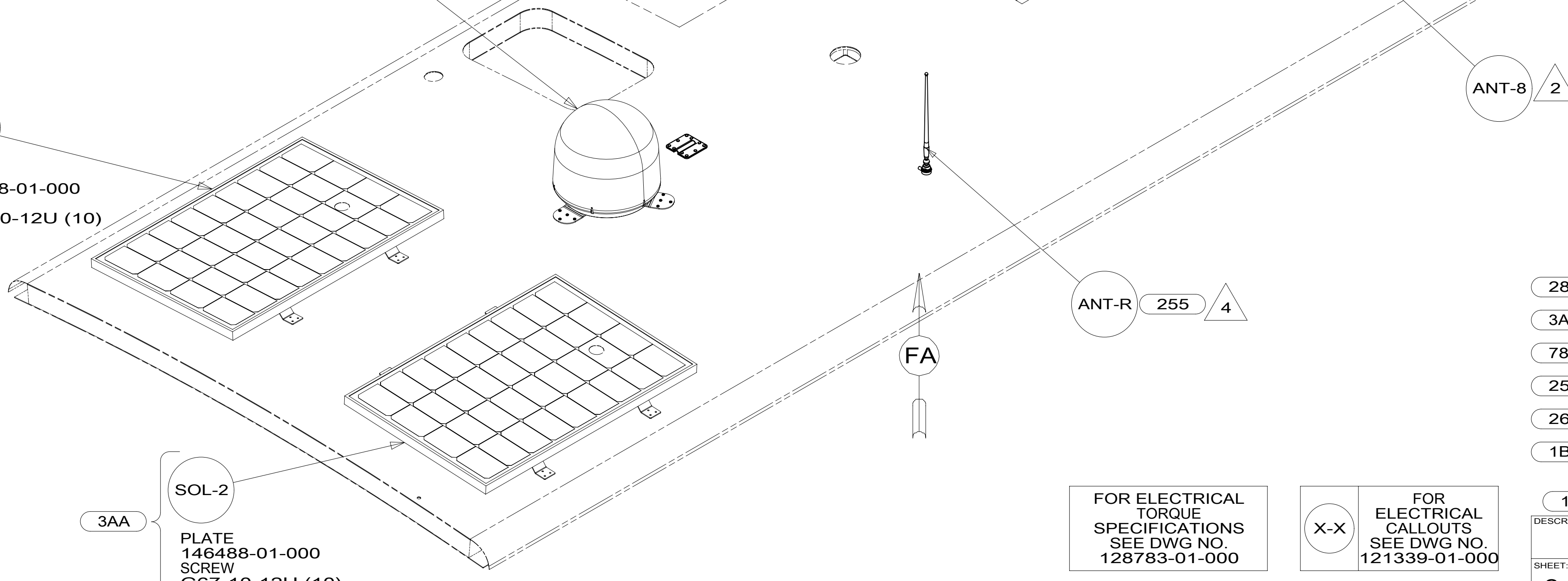
SPEAKER
179783-01-CHT (2)
SCREW
OG1208-12-170 (8)



ANTENNA-SATELLITE, STATIONARY
000017113 / 313336-01-CHT
SCREW-SF/DR-8-18X1/2 PPH
000G39-08-08U (9)
COAX CABLE
163598-04-000 (2)
ADAPTER-CABLE TO CABLE
082134-01-000 (2)
CONDUIT-CONVOLUTED, SLIT .375
041953-06-000 (200 MM)
SCREW-10-12X.75 PPH
000G67-10-12U (10)
(FOR PLATE SUPPLIED W/ DISH)
DEATIL FB

3 78K

3AA
SOL-2
PLATE
146488-01-000
SCREW
G67-10-12U (10)



- NOTES:
- 5 REMOVE ALL SHIPPING RESTRAINTS BEFORE MOUNTING.
 - 4 REMOVE GROUND WIRE FROM ANTENNA BASE.
 - 3 INSTALL AS SPECIFIED IN THE INSTALLATION PROCESS.
 - 2 SEE ANTENNA INSTALLATION MANUAL FOR CORRECT INSTALLATION PROCEDURE.
 - 1 WRAP BRACKET LEGS AROUND ANTENNA BASE.

- 282 SOLAR PANEL - 100 WATT
- 3AA SOLAR PANEL/BATT CHARGER SYS
- 78K SATELLITE TV SYSTEM AUTO
- 255 RADIO/AM/FM/CD/DVD, COACH
- 265 CODES/STANDARDS-CSA/CMVSS
- 1B1 CODES/STANDARDS USA

FOR ELECTRICAL TORQUE SPECIFICATIONS SEE DWG NO. 128783-01-000

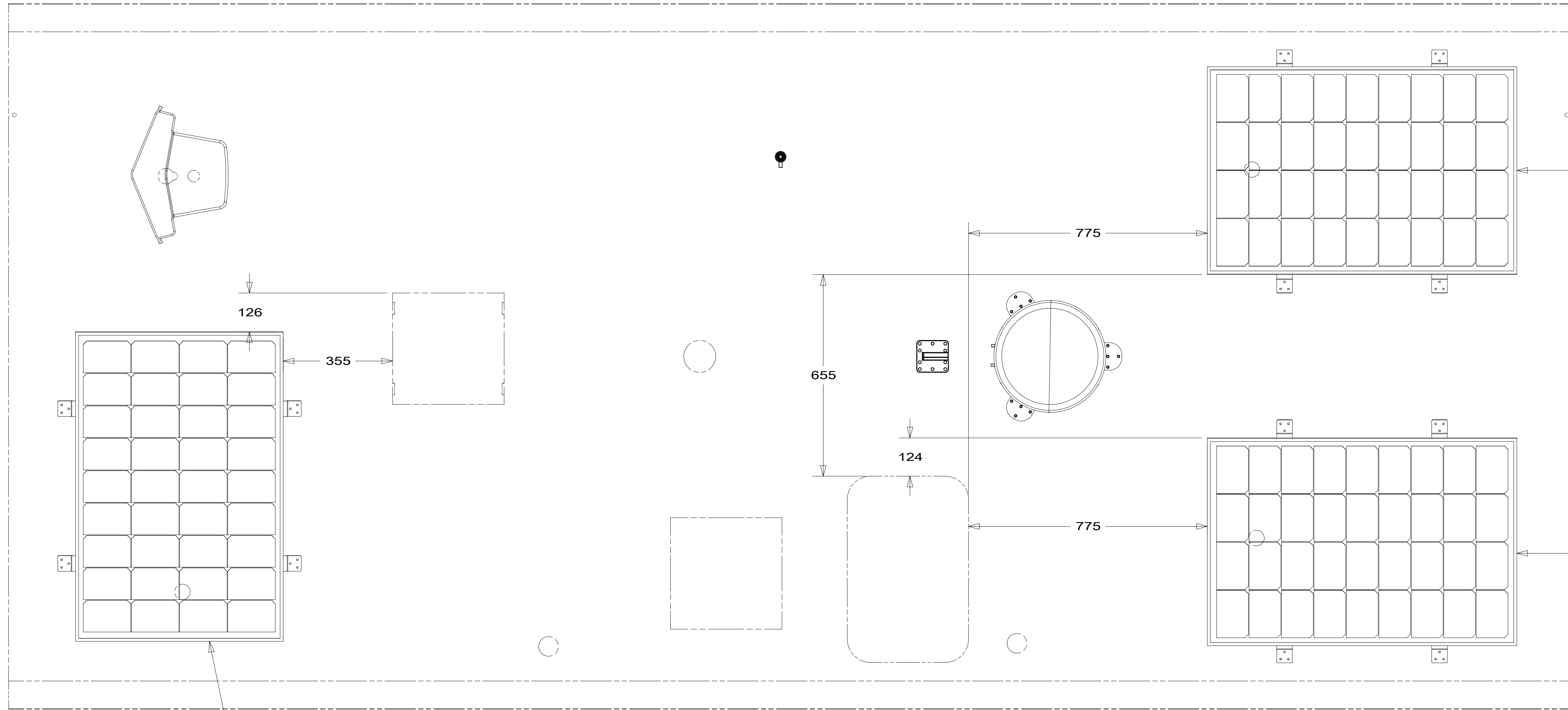
FOR ELECTRICAL CALLOUTS SEE DWG NO. 121339-01-000

DESCRIPTION: WIRING INSTL-BODY, 12V		
SHEET: 6 OF 7	ITEM/PART NO: 000181265 / 30124301000	REV

8 7 6 5 4 3 2 1 20-Sep-2016

8 7 6 5 4 3 2 1

D
C
B
A



VIEW GA

- 3AA SOLAR PANEL/BATT CHARGER SYS
- 282 SOLAR PANEL - 100 WATT
- 265 CODES/STANDARDS-CSA/CMVSS
- 1B1 CODES/STANDARDS USA

FOR ELECTRICAL TORQUE SPECIFICATIONS SEE DWG NO. 128783-01-000

FOR ELECTRICAL CALLOUTS SEE DWG NO. 121339-01-000

DESCRIPTION:	
1B1 265	
WIRING INSTL-BODY, 12V	
SHEET:	ITEM/PART NO. REV
7 OF 7	000181265 / 30124301000

8 7 6 5 4 3 2 1 20-Sep-2016