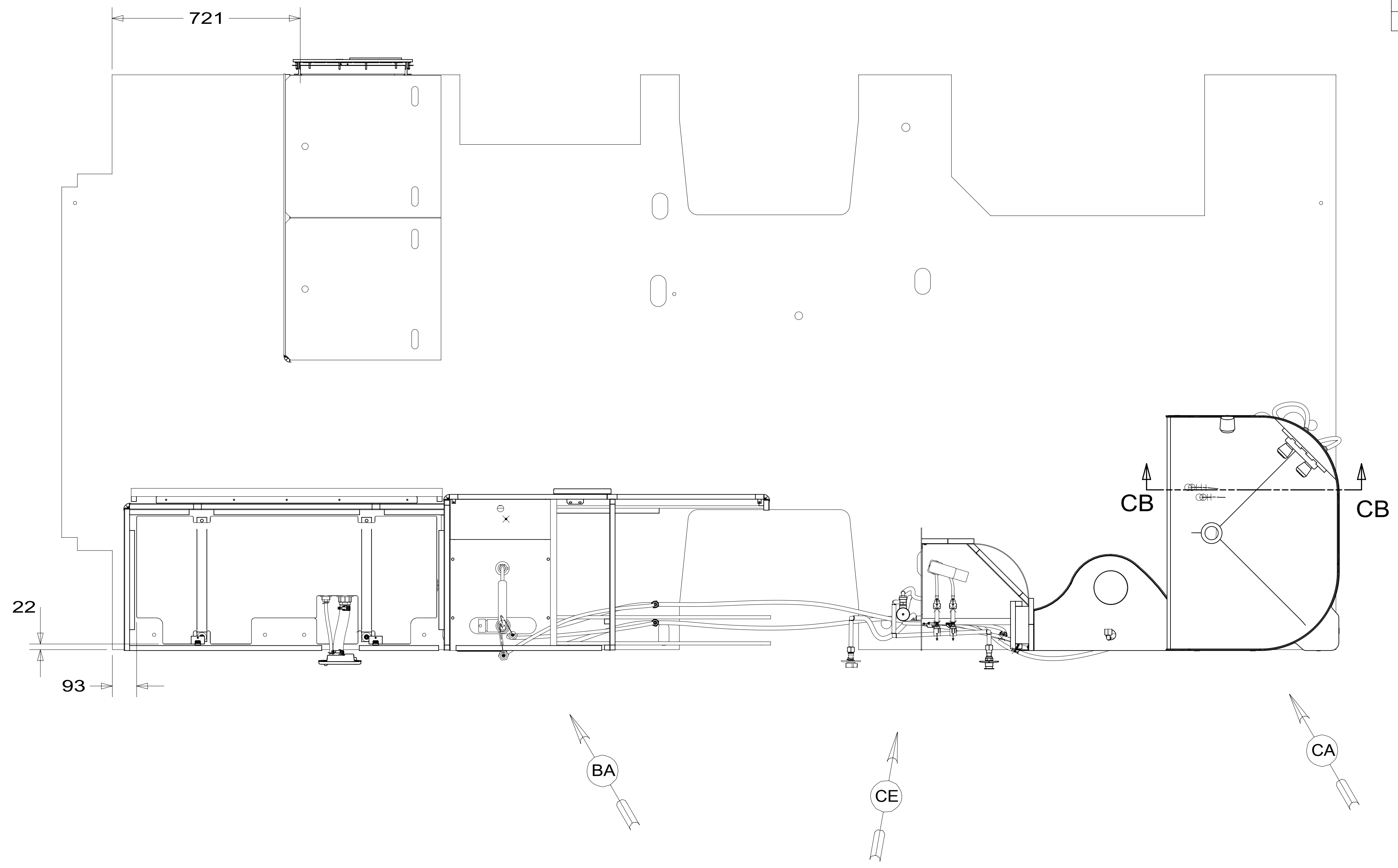


REV	ZONE	REVISION RECORD	DATE	DFTR-ORIG
A	---	INITIAL RELEASE	11/02/15	3650
B	---	DELS SPACER CALL. SHT2	6-10-16	1600-5472
C	---	SHT2 CHG LENGTH	8-5-16	1600-2314



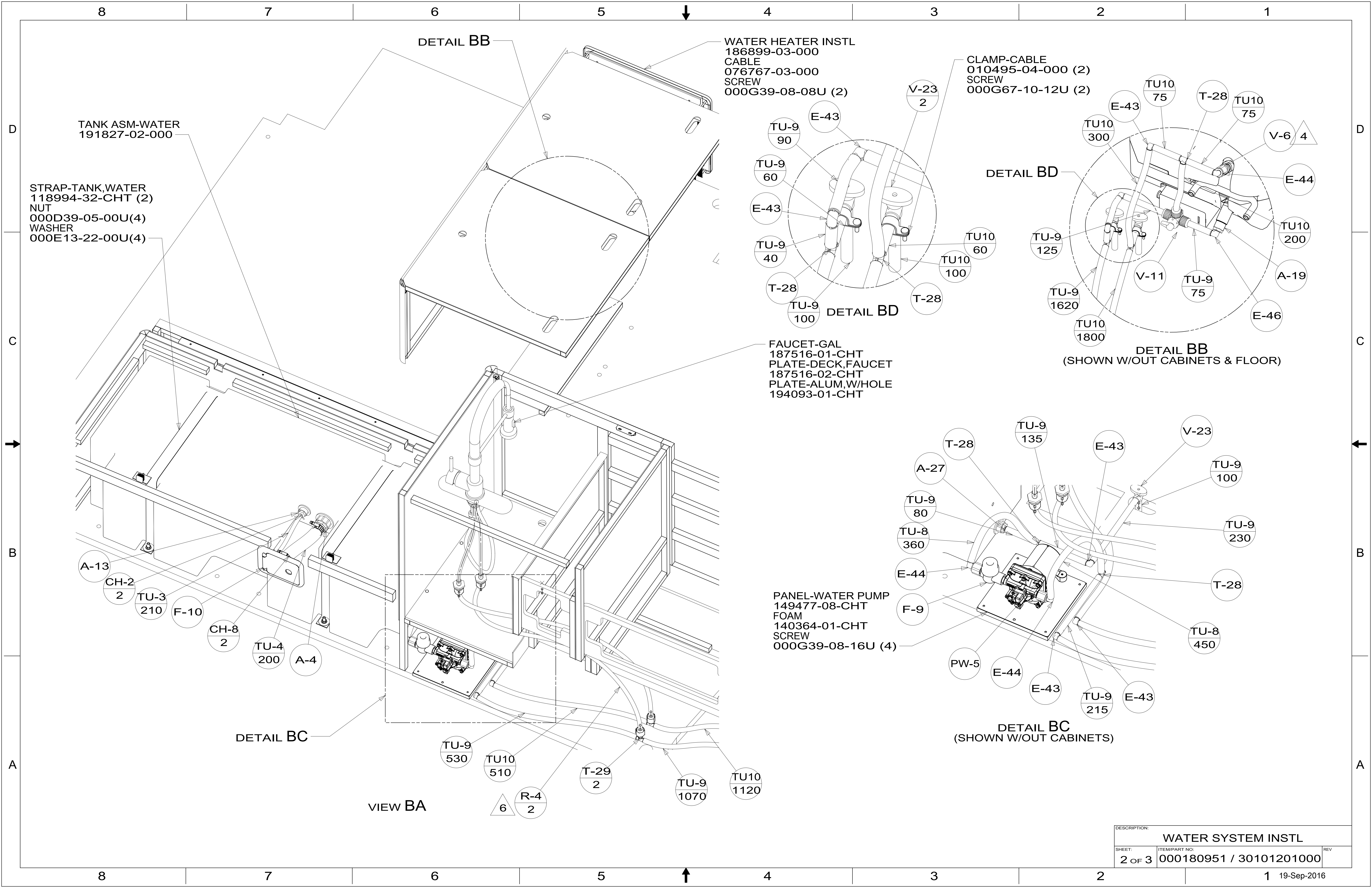
8. ALL CRIMP FITTINGS TO 1/2" PEX TUBING REQUIRE 1/2" CLAMP 140171-03-000.
7. ALL CRIMP FITTINGS TO 5/8" PEX TUBING REQUIRE 5/8" CLAMP 140171-04-000.
- 6 LABEL HOT AND COLD SUPPLY TUBES AND TAPE FITTING TO TUBE BEFORE CABINET SET TO PREVENT MOVEMENT.
- 5 ADD PIPE WRAP (LADDER SCRAP 110157-02-000) INSULATION.
- 4 ADD TEFLON TAPE 010405-02-000.
3. ALL TUBING TO BE SECURED AT 1200 INTERVALS MAXIMUM WITH CLAMP 010495-01-000 AND SCREW 000G67-10-12U OR EQUIVALENT.
2. TUBING TO BE INSTALLED WITH SUFFICIENT SLOPE TO PROVIDE DRAINAGE TO NEAREST VALVE.
1. PLASTIC FITTINGS TO BE SEALED WITH SEALANT 084456-01-000.

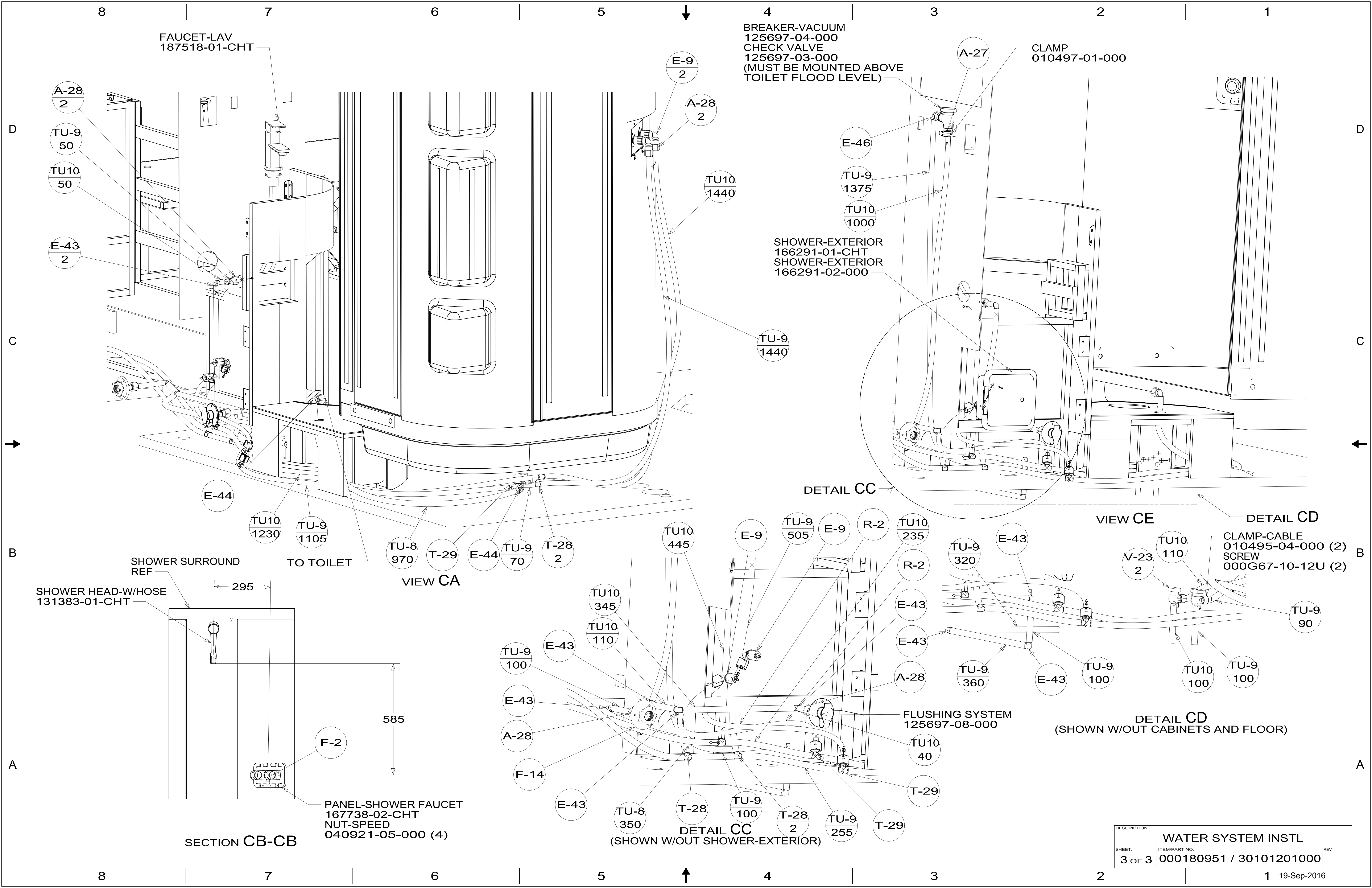
- 53E WATER SYS WINTERIZATION PKG
- 53B WTR HTR-6 GAL ELEC/LP/GAS
- 29B WATER PURIFIER
- 64R EXTERIOR WASH STATION

WINNEBAGO
COPYRIGHT 2016 WINNEBAGO INDUSTRIES, INC.

DSNR:	ALL DIMENSIONS ARE IN MILLIMETERS	
DFTR:	MATERIAL:	
UNSPECIFIED TOLERANCES:	WHOLE DIM (X) :	3
	ONE-PLACE (X.X) :	1.5
	TWO-PLACE (X.XX) :	0.50
	ANGLE :	1°
REFER TO ES0018 FOR FASTENER TIGHTENING GUIDELINES	WEIGHT: (LBS)	FIRST USED: (REF)
		16 423T
DESCRIPTION: WATER SYSTEM INSTL		
SHEET: 1 OF 3	ITEM/PART NO: 000180951 / 30101201000	REV:

X-X
FOR WATER CALLOUTS SEE DWG NO. 000209446 / 303369-01-000





FAUCET-LAV
187518-01-CHT

BREAKER-VACUUM
125697-04-000
CHECK VALVE
125697-03-000
(MUST BE MOUNTED ABOVE
TOILET FLOOD LEVEL)

CLAMP
010497-01-000

D

D

C

C

B

B

A

A

A-28
2

TU-9
50

TU10
50

E-43
2

E-9
2

A-28
2

TU10
1440

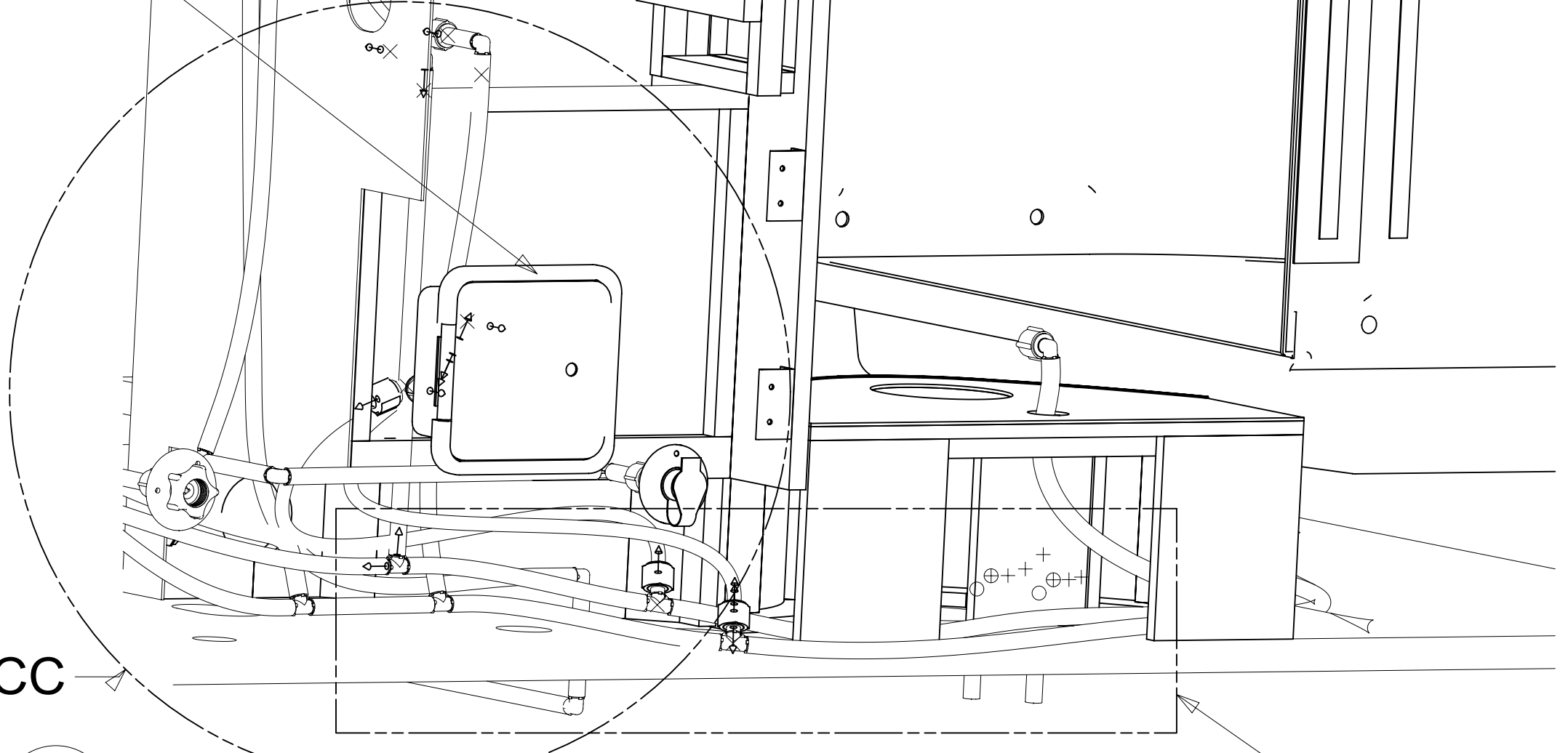
E-46

TU-9
1375

TU10
1000

SHOWER-EXTERIOR
166291-01-CHT
SHOWER-EXTERIOR
166291-02-000

TU-9
1440



DETAIL CC

E-44

TU10
1230

TU-9
1105

TU-8
970

T-29

E-44

TU-9
70

T-28
2

TU10
445

E-9

TU-9
505

E-9

R-2

TU10
235

R-2

TU-9
320

E-43

V-23
2

TU10
110

CLAMP-CABLE
010495-04-000 (2)
SCREW
000G67-10-12U (2)

TU-9
90

SHOWER HEAD-W/HOSE
131383-01-CHT

295

B

B

TO TOILET

VIEW CA

VIEW CE

DETAIL CD

DETAIL CD
(SHOWN W/OUT CABINETS AND FLOOR)

SECTION CB-CB

PANEL-SHOWER FAUCET
167738-02-CHT
NUT-SPEED
040921-05-000 (4)

585

F-2

TU-9
100

E-43

TU10
110

E-43

TU10
345

TU10
110

E-43

A-28

E-43

A-28

TU-9
360

E-43

TU-9
100

E-43

TU10
100

TU-9
100

FLUSHING SYSTEM
125697-08-000

TU10
40

T-29

DETAIL CC
(SHOWN W/OUT SHOWER-EXTERIOR)

TU-8
350

T-28

TU-9
100

T-28
2

TU-9
255

T-29

DESCRIPTION: WATER SYSTEM INSTL		
SHEET: 3 OF 3	ITEM/PART NO: 000180951 / 30101201000	REV