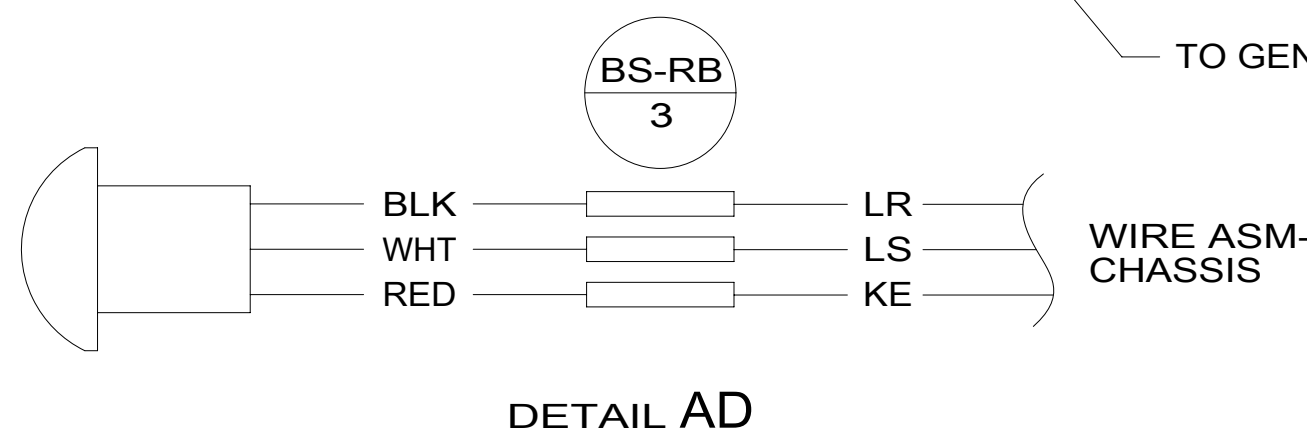


- NOTES:**
- 1 SEE WIRING INSTL-BODY, 12V FOR ADDITIONAL INFORMATION.
 - 2. SECURE CONDUIT 41953, TAB AS REQUIRED, OVER ALL WIRES IN CONTACT WITH SHARP EDGES.
 - 3 CUT WIRE TIE AROUND SPRINTER SEAL, ROUTE THE CHASSIS WIRING THROUGH HOLE AND WIRE TIE SEAL WITH WIRE TIE 8343-04-000.
 - 4 SEE BATTERY INSTL FOR ADDITIONAL INFORMATION.
 - 5 CABLE SUPPLIED WITH DIESEL GENERATOR.
 - 6 10 PIN HOUSING CONNECTS TO GENERATOR.
 - 7 12 PIN HOUSING TO BE ROUTED ABOVE FLOOR TO CONTROL PANEL.
 - 8 CONNECT THE TWO 15 PIN HOUSINGS TOGETHER WITHOUT 57P
 - 9 REMOVE PLASTIC TRAY AND DISCARD.
 - 10 NOTCH A-POST COVER WHERE IT MEETS THE DASH TO ALLOW DISPLAY CABLE THROUGH. MOUNT DISPLAY TO A-POST COVER AND ADJUST FOR DRIVER'S VIEWING. ROUTE DISPLAY CABLE TO CENTER DASH AND CONNECT TO CAMERA HARNESS.
 - 11 REMOVE REAR VIEW MIRROR AND MOUNT CAMERA TO CENTER OF WINDSHIELD AND 25 MM BELOW REAR VIEW MIRROR BUTTON. ROUTE CABLE UP ABOVE HEADLINER THEN LEFT DOWN LEFT A-POST TO CENTER DASH TO CONNECT TO WIRE ASM-CHASSIS.
 - 12 DRILL 12.3 MM HOLE INTO DASH PANEL.

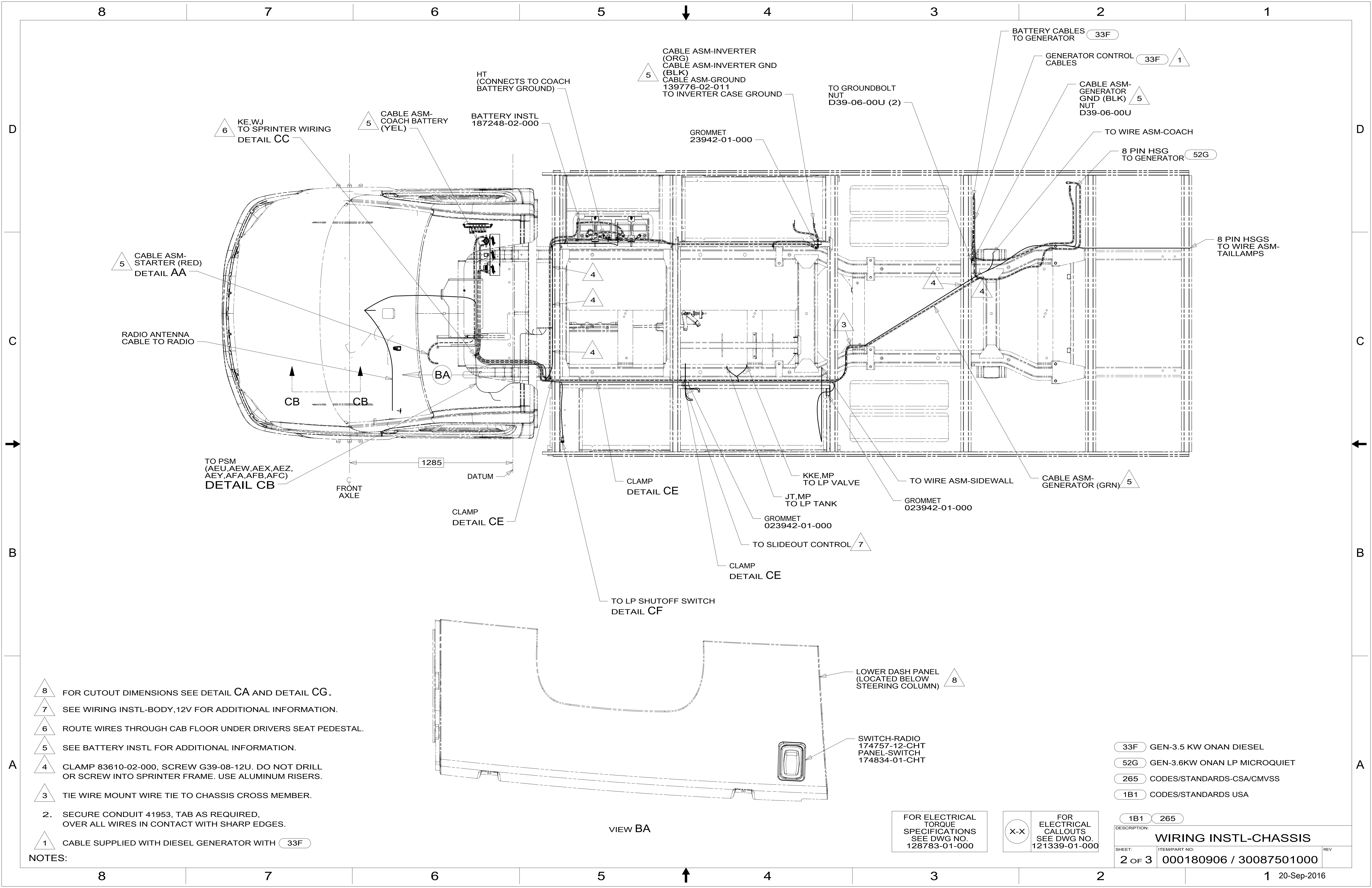


- 36C COLLISION AVOIDANCE SYSTEM
- 57P RADIO SPEAKERS-PREMIUM SOUND
- 33F GEN-3.5 KW ONAN DIESEL
- 52G GEN-3.6KW ONAN LP MICROQUIET
- 265 CODES/STANDARDS-CSA/CMVSS
- 1B1 CODES/STANDARDS USA

WINNEBAGO COPYRIGHT 2016 WINNEBAGO INDUSTRIES, INC.	
DSNR:	ALL DIMENSIONS ARE IN MILLIMETERS
DfTR:	
UNSPECIFIED TOLERANCES:	MATERIAL:
WHOLE DIM (X) : 3	
ONE-PLACE (X.X) : 1.5	
TWO-PLACE (X.XX) : 0.50	
ANGLE : 1°	
REFER TO ES0018 FOR FASTENER TIGHTENING GUIDELINES	WEIGHT: (LBS) FIRST USED: 16 524J
DESCRIPTION: WIRING INSTL-CHASSIS	
SHEET: 1 OF 3	ITEM/PART NO: 000180906 / 30087501000
REF:	

FOR ELECTRICAL TORQUE SPECIFICATIONS SEE DWG NO. 128783-01-000

FOR ELECTRICAL CALLOUTS SEE DWG NO. 121339-01-000



D

C

B

A

D

C

B

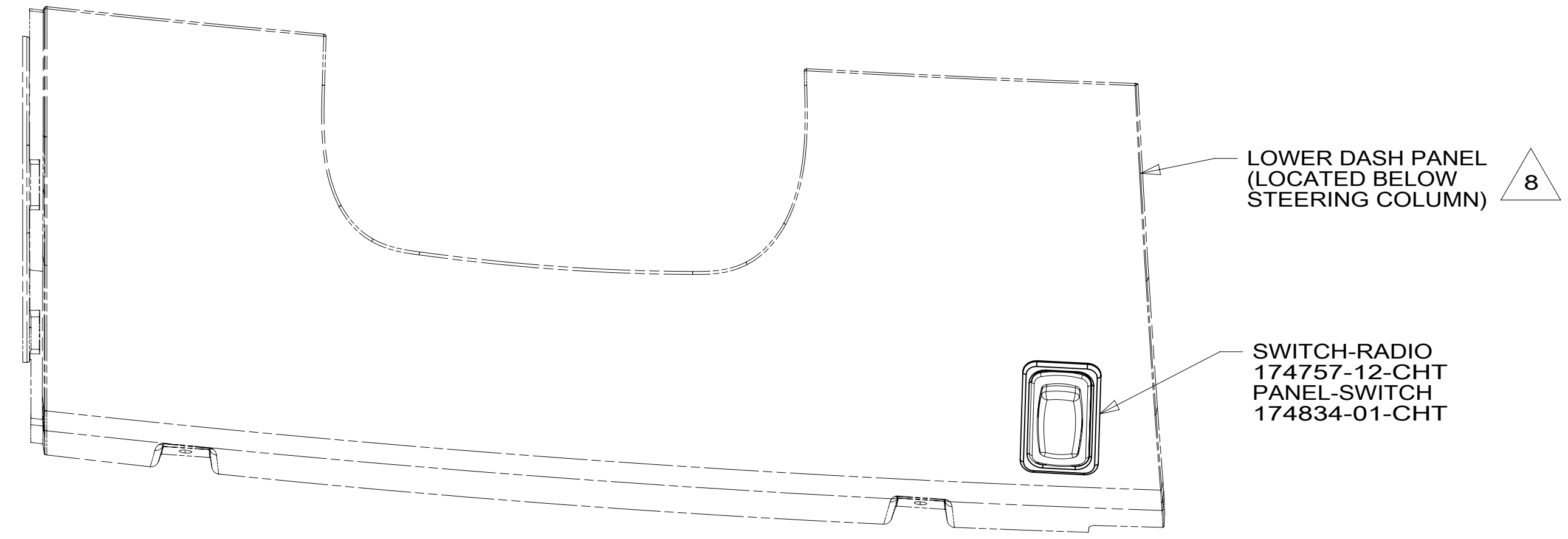
A

8 7 6 5 4 3 2 1

8 7 6 5 4 3 2 1 20-Sep-2016

- 8 FOR CUTOUT DIMENSIONS SEE DETAIL CA AND DETAIL CG.
- 7 SEE WIRING INSTL-BODY, 12V FOR ADDITIONAL INFORMATION.
- 6 ROUTE WIRES THROUGH CAB FLOOR UNDER DRIVERS SEAT PEDESTAL.
- 5 SEE BATTERY INSTL FOR ADDITIONAL INFORMATION.
- 4 CLAMP 83610-02-000, SCREW G39-08-12U. DO NOT DRILL OR SCREW INTO SPRINTER FRAME. USE ALUMINUM RISERS.
- 3 TIE WIRE MOUNT WIRE TIE TO CHASSIS CROSS MEMBER.
- 2. SECURE CONDUIT 41953, TAB AS REQUIRED, OVER ALL WIRES IN CONTACT WITH SHARP EDGES.
- 1 CABLE SUPPLIED WITH DIESEL GENERATOR WITH 33F

NOTES:



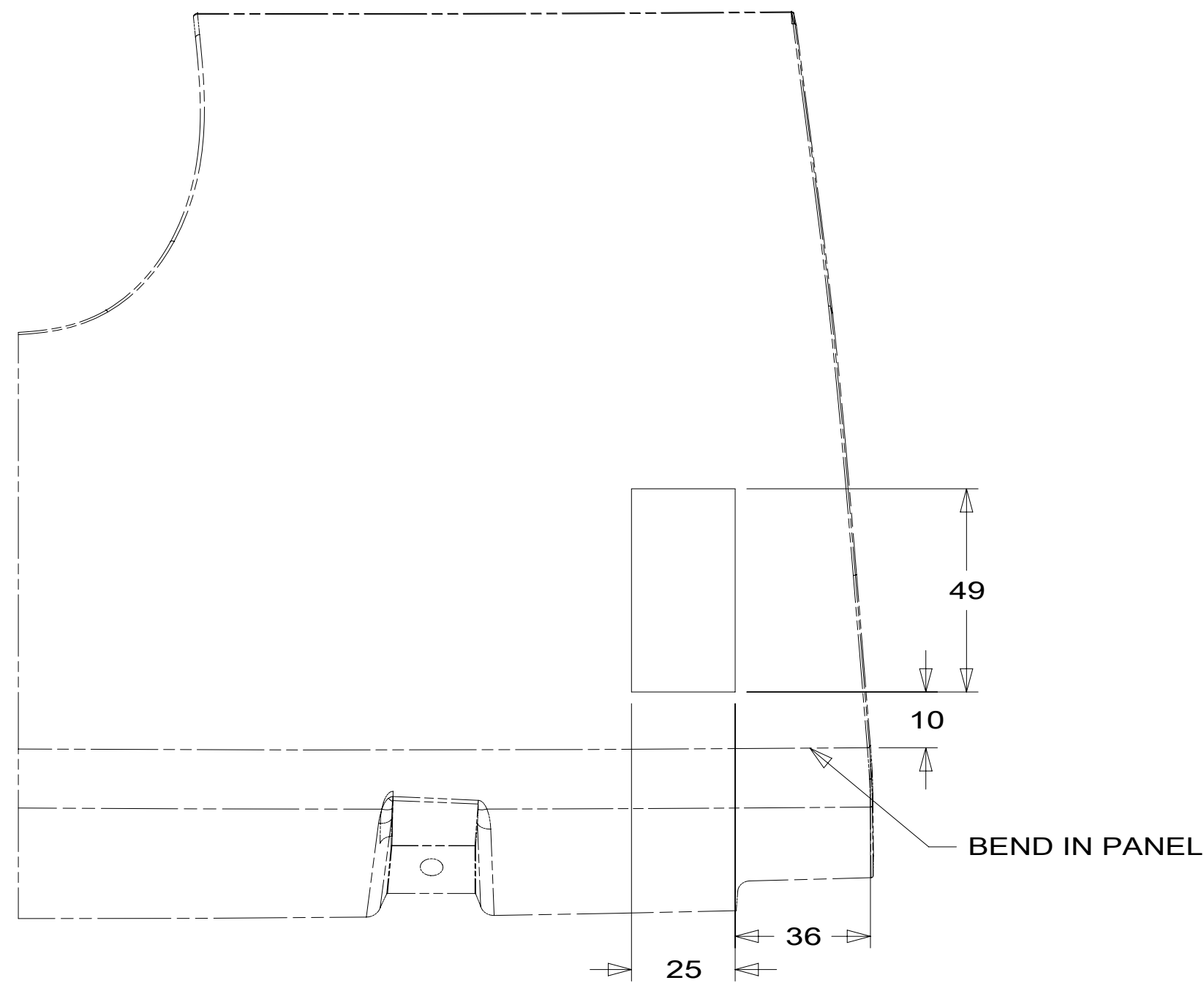
VIEW BA

FOR ELECTRICAL TORQUE SPECIFICATIONS SEE DWG NO. 128783-01-000

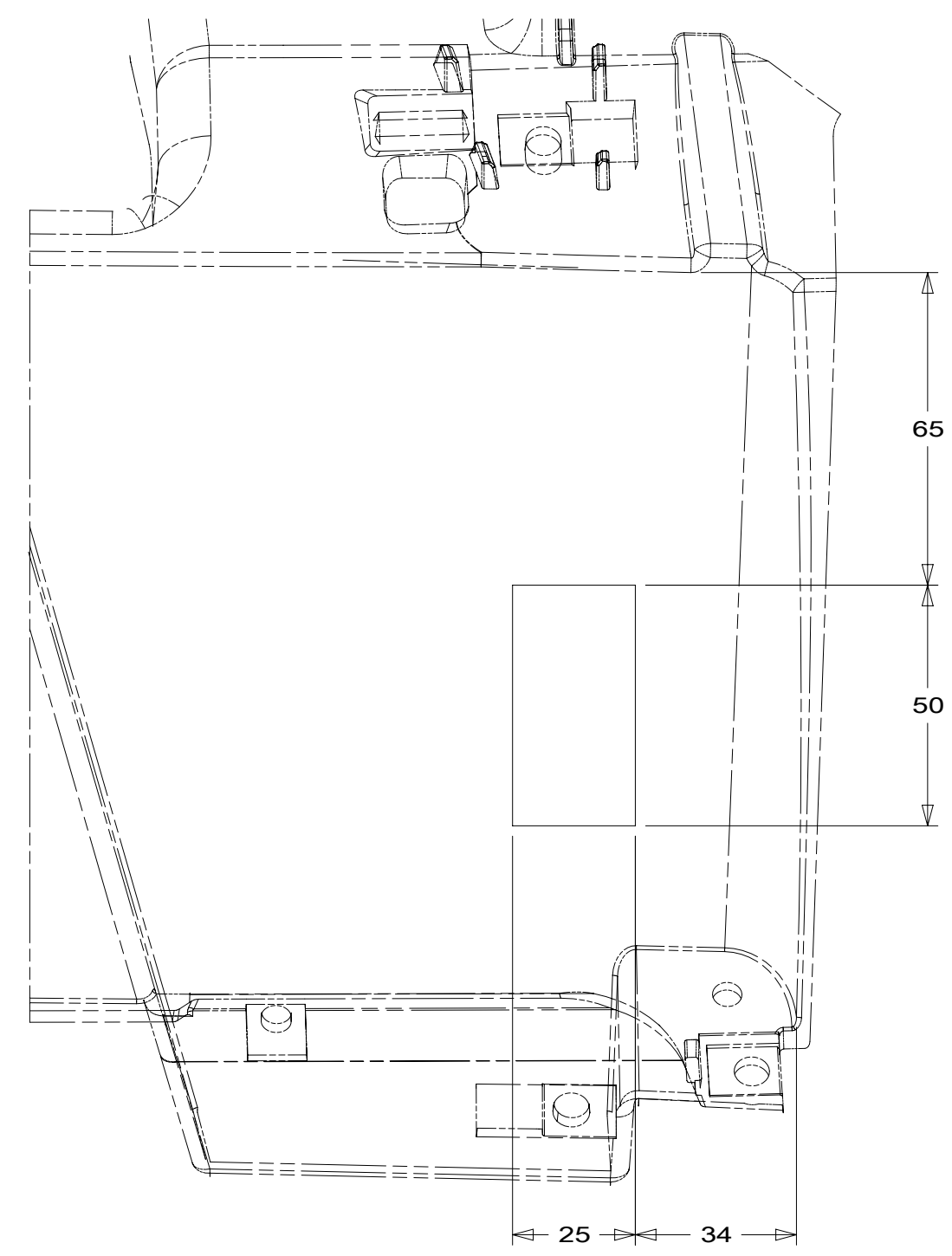
FOR ELECTRICAL CALLOUTS SEE DWG NO. 121339-01-000

- 33F GEN-3.5 KW ONAN DIESEL
- 52G GEN-3.6KW ONAN LP MICROQUIET
- 265 CODES/STANDARDS-CSA/CMVSS
- 1B1 CODES/STANDARDS USA

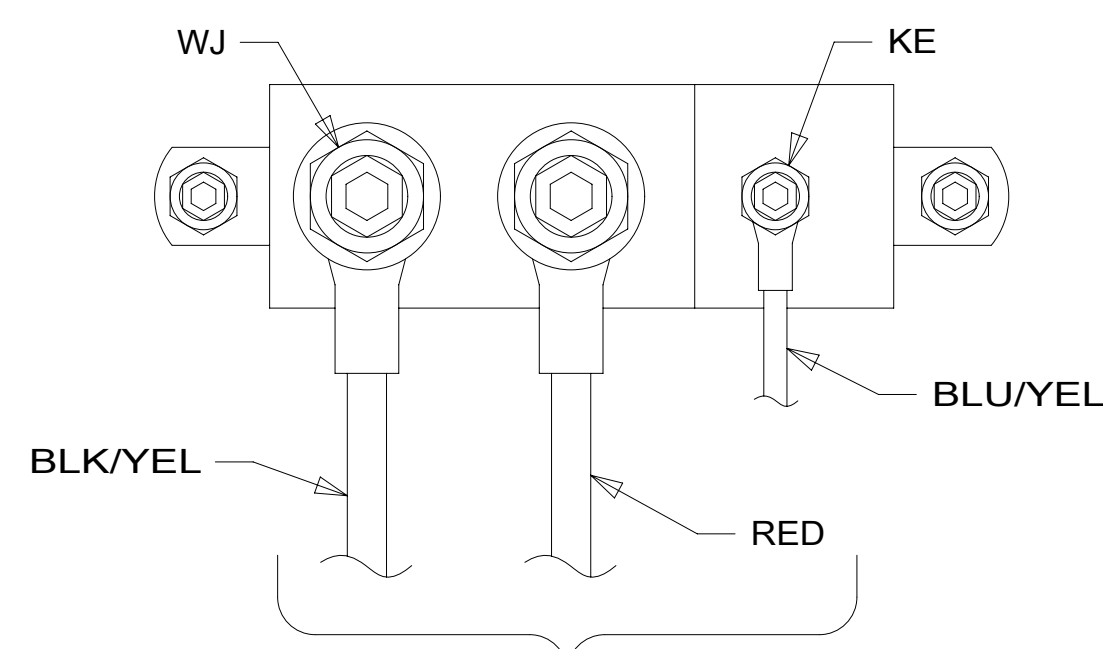
DESCRIPTION:		1B1 265	
WIRING INSTL-CHASSIS			
SHEET:	ITEM/PART NO.:	REV:	
2 OF 3	000180906 / 30087501000		



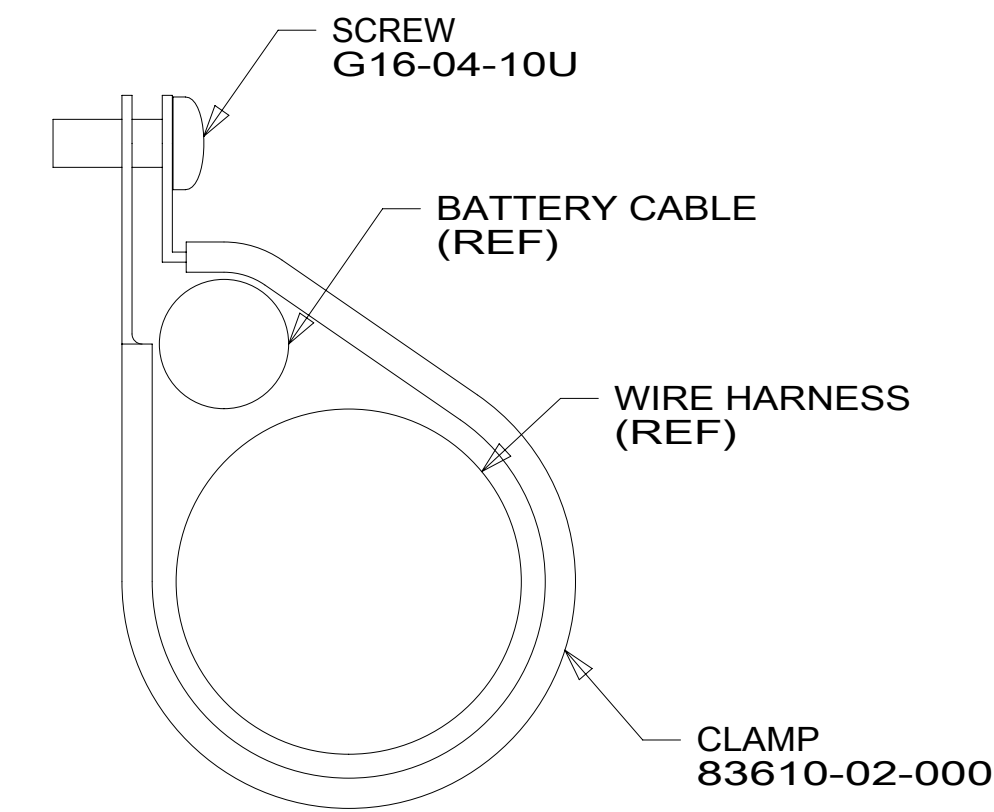
DETAIL CA \triangle 5



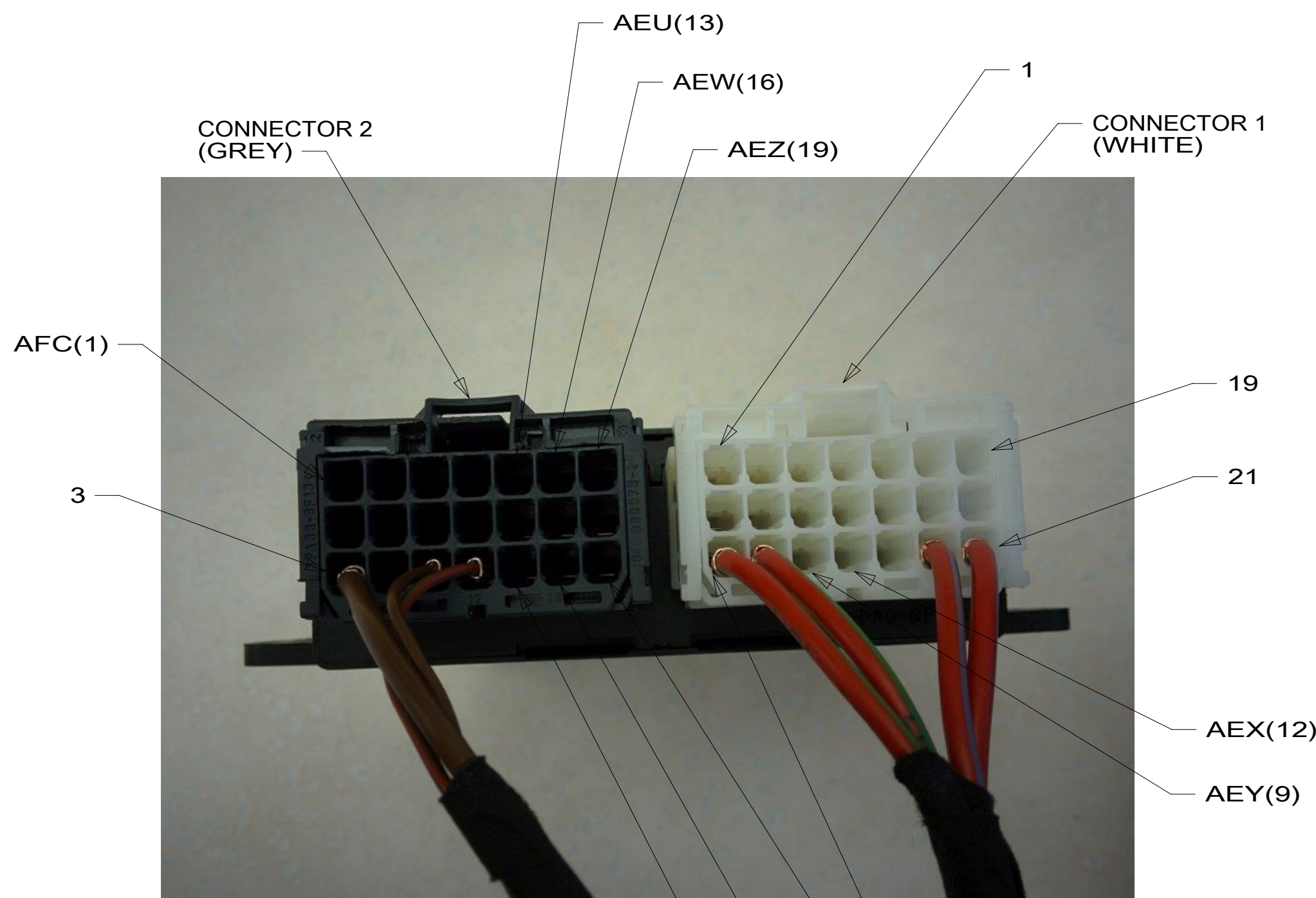
VIEW CG \triangle 6



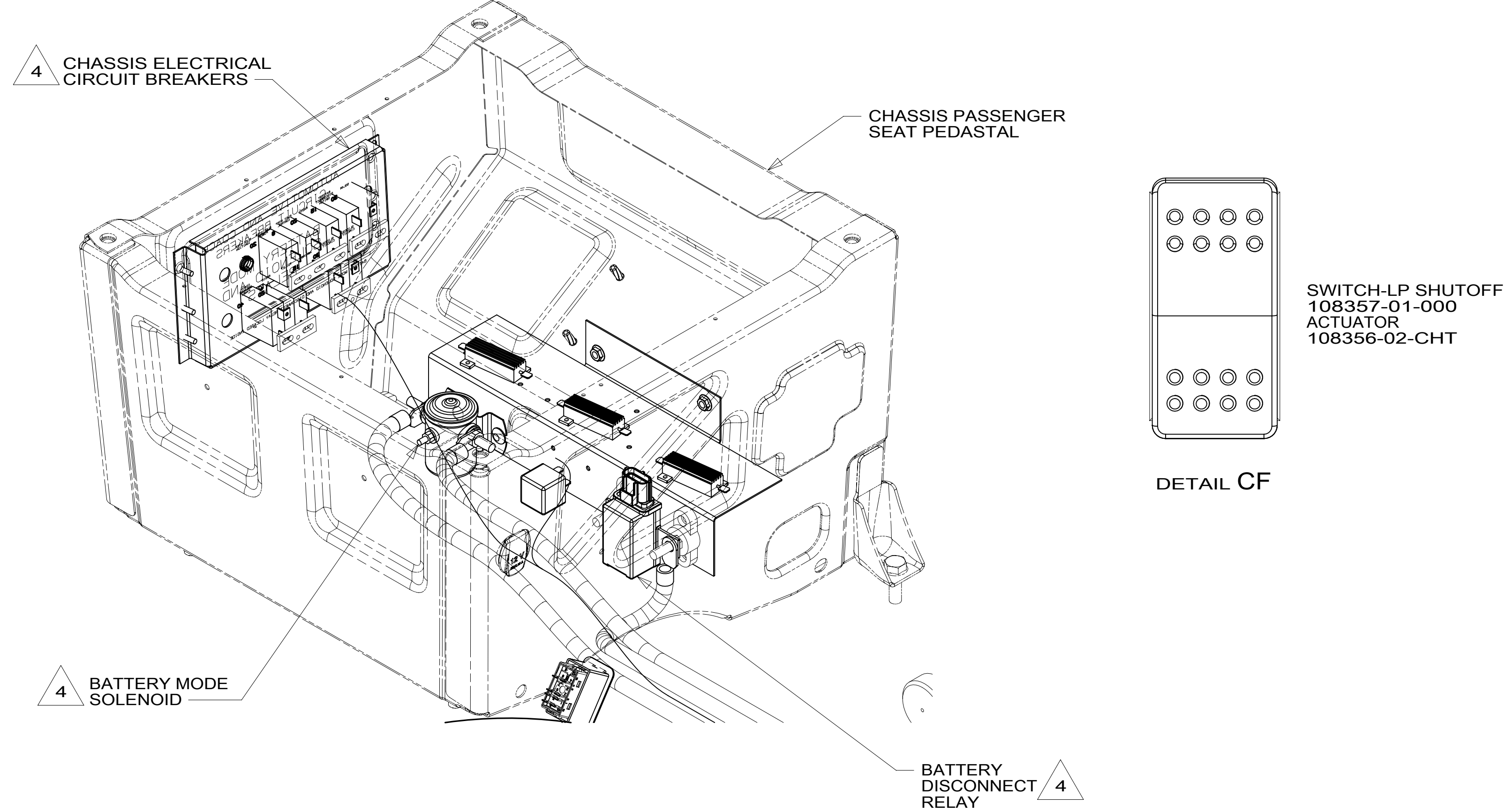
DETAIL CC \triangle 3



DETAIL CE (3 PLACES)



DETAIL CB \triangle 1



DETAIL CD

- NOTES:
- \triangle 6 DASH STRUCTURE LOCATED BEHIND LOWER DASH PANEL.
 - \triangle 5 LOWER DASH PANEL.
 - \triangle 4 SEE CHASSIS ELECTRICAL BOX ASM FOR ADDITIONAL INFORMATION.
 - \triangle 3 CONNECTION POINT IS LOCATED UNDER DRIVERS SEAT.
 - 2. SECURE CONDUIT 41953, TAB AS REQUIRED, OVER ALL WIRES IN CONTACT WITH SHARP EDGES.
 - \triangle 1 PSM IS LOCATED UNDER DRIVERS SEAT.

265 CODES/STANDARDS-CSA/CMVSS
 1B1 CODES/STANDARDS USA

FOR ELECTRICAL TORQUE SPECIFICATIONS SEE DWG NO. 128783-01-000

FOR ELECTRICAL CALLOUTS SEE DWG NO. 121339-01-000

DESCRIPTION:	
WIRING INSTL-CHASSIS	
SHEET: 3 OF 3	ITEM/PART NO: 000180906 / 30087501000
REV	