

D

D

C

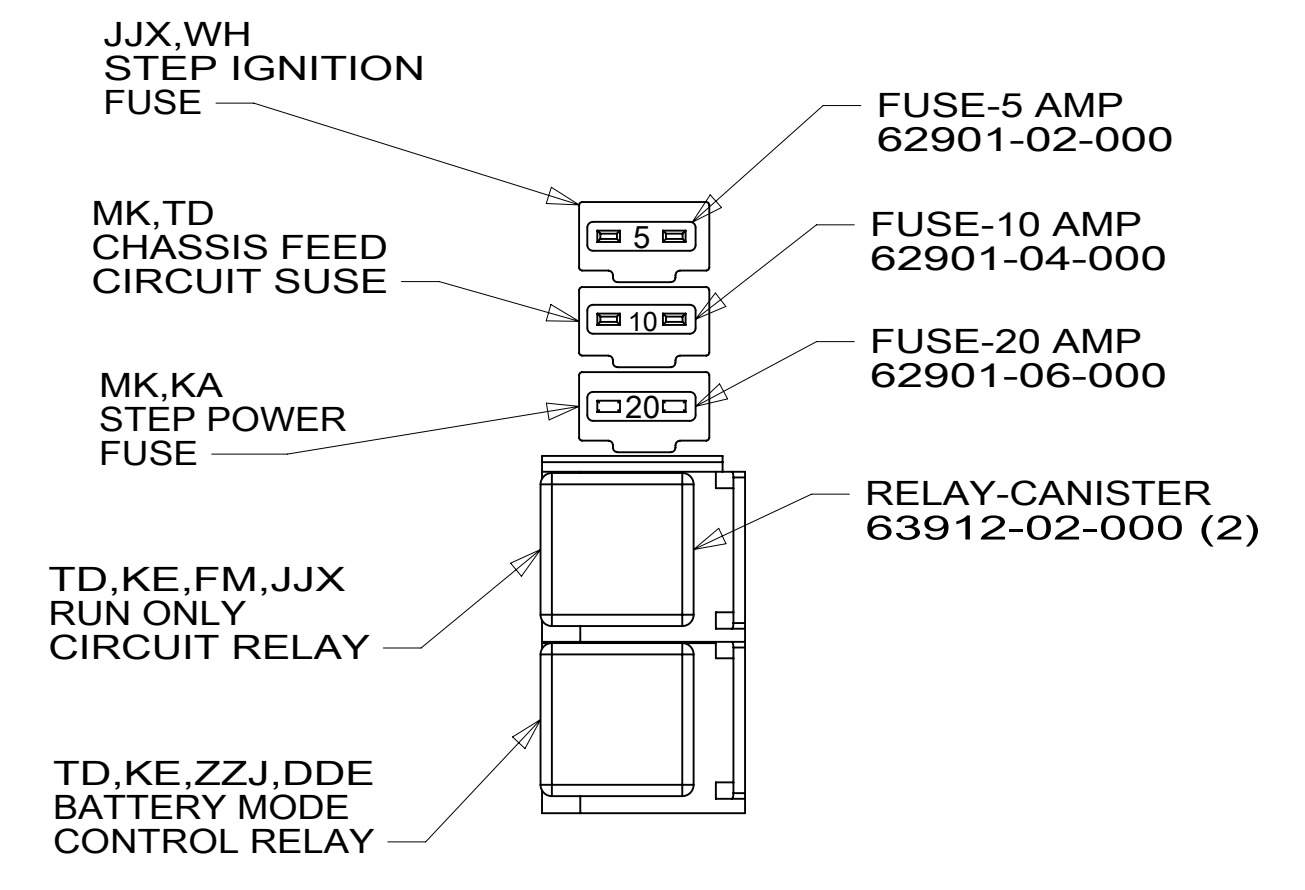
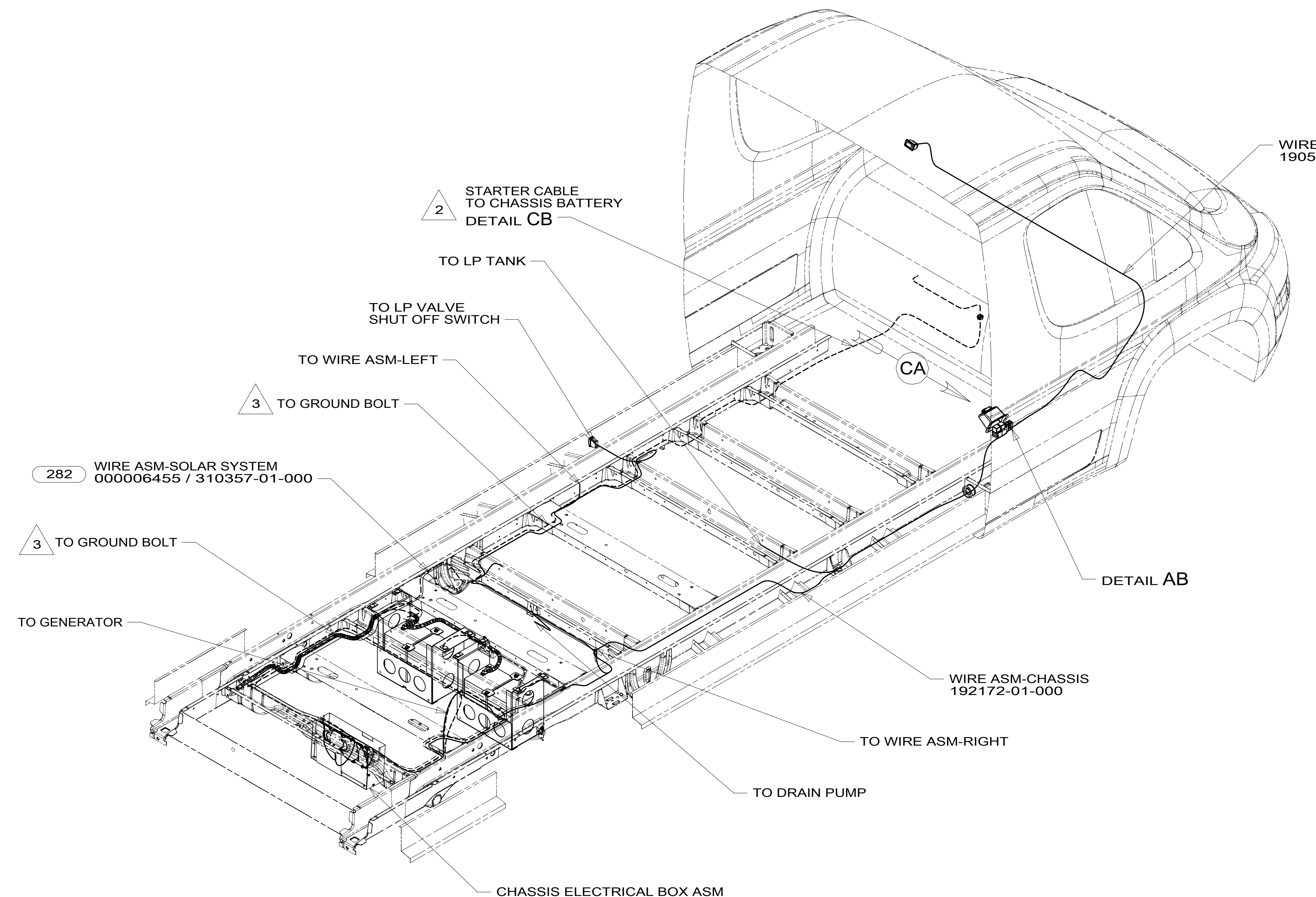
C

B

B

A

A



DETAIL AB

- NOTES:
- 4 NOT USED WITH CHASSIS SUPPLIED IGNITION INTERLOCKING SWIVEL SEAT.
  - 3 REMOVE PAINT AND UNDER COATING FROM GROUND BOLT AND NUT TO INSURE PROPER CONTACT.
  - 2 SEE BATTERY INSTL. FOR ADDITIONAL INFORMATION.
  - 1. SECURE CONDUIT 41953, TAB AS REQUIRED, OVER ALL WIRES IN CONTACT WITH SHARP EDGES.

FOR ELECTRICAL TORQUE SPECIFICATIONS SEE DWG NO. 128783-01-000

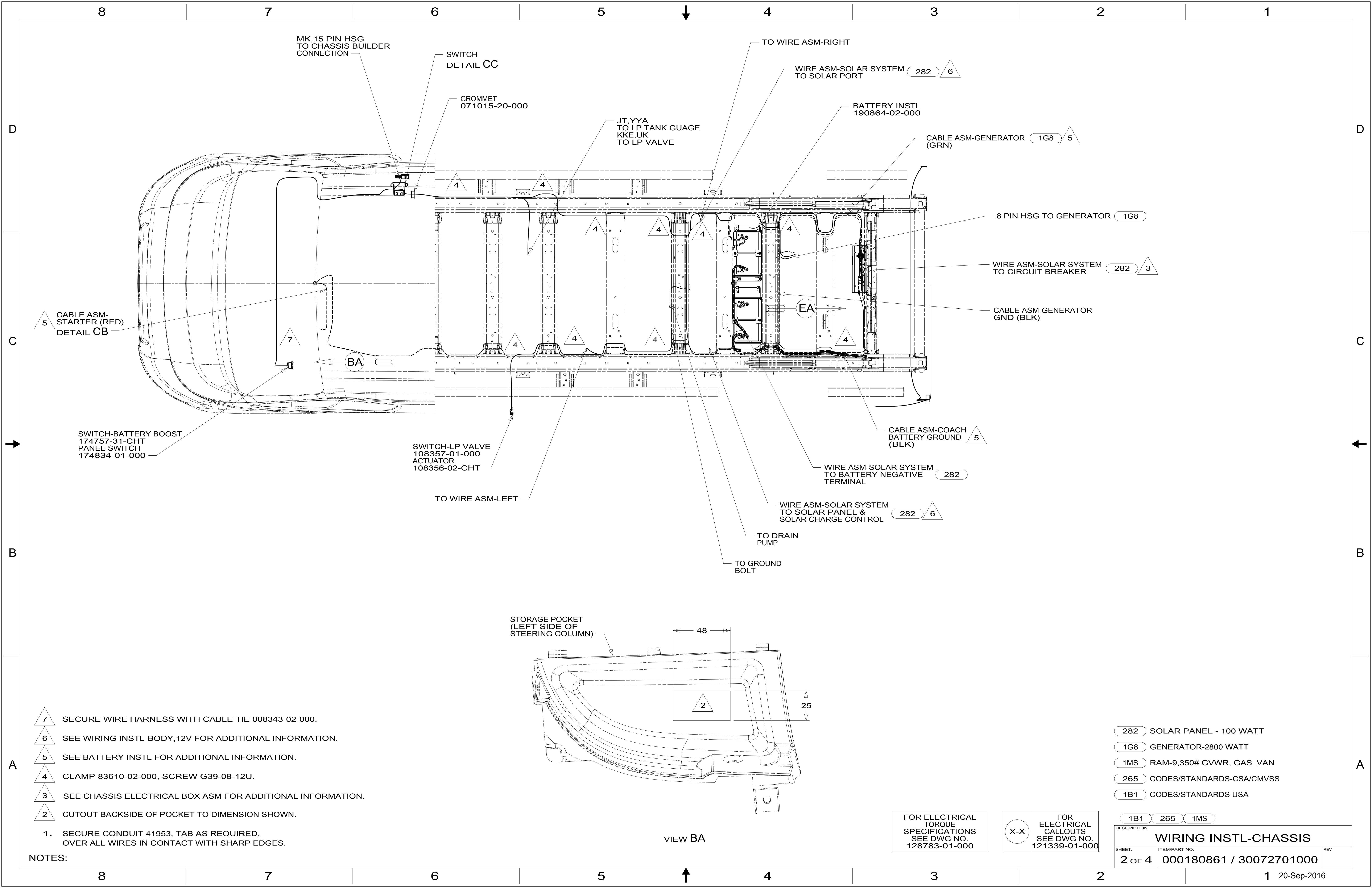
FOR ELECTRICAL CALLOUTS SEE DWG NO. 121339-01-000

- 282 SOLAR PANEL - 100 WATT
- 1MS RAM-9,350# GVWR, GAS\_VAN
- 265 CODES/STANDARDS-CSA/CMVSS
- 1B1 CODES/STANDARDS USA

1B1 265 1MS

COPYRIGHT 2016 WINNEBAGO INDUSTRIES, INC.

DSNR:		ALL DIMENSIONS ARE IN MILLIMETERS	
DFFR:			
UNSPECIFIED TOLERANCES:		MATERIAL:	
WHOLE DIM (X)	3		
ONE-PLACE (X.X)	1.5		
TWO-PLACE (X.XX)	0.50		
ANGLE	1°		
REFER TO ES0018 FOR FASTENER TIGHTENING GUIDELINES	WEIGHT: (LBS)	FIRST USED:	
DESCRIPTION: <b>WIRING INSTL-CHASSIS</b>			
SHEET: 1 OF 4	ITEM/PART NO: 000180861 / 30072701000	REV:	



MK,15 PIN HSG  
TO CHASSIS BUILDER  
CONNECTION

SWITCH  
DETAIL CC

GROMMET  
071015-20-000

JT,YYA  
TO LP TANK GAUGE  
KKE,UK  
TO LP VALVE

TO WIRE ASM-RIGHT

WIRE ASM-SOLAR SYSTEM  
TO SOLAR PORT

BATTERY INSTL  
190864-02-000

CABLE ASM-GENERATOR  
(GRN)

8 PIN HSG TO GENERATOR

WIRE ASM-SOLAR SYSTEM  
TO CIRCUIT BREAKER

CABLE ASM-GENERATOR  
GND (BLK)

CABLE ASM-  
STARTER (RED)  
DETAIL CB

SWITCH-BATTERY BOOST  
174757-31-CHT  
PANEL-SWITCH  
174834-01-000

SWITCH-LP VALVE  
108357-01-000  
ACTUATOR  
108356-02-CHT

TO WIRE ASM-LEFT

CABLE ASM-COACH  
BATTERY GROUND  
(BLK)

WIRE ASM-SOLAR SYSTEM  
TO BATTERY NEGATIVE  
TERMINAL

WIRE ASM-SOLAR SYSTEM  
TO SOLAR PANEL &  
SOLAR CHARGE CONTROL

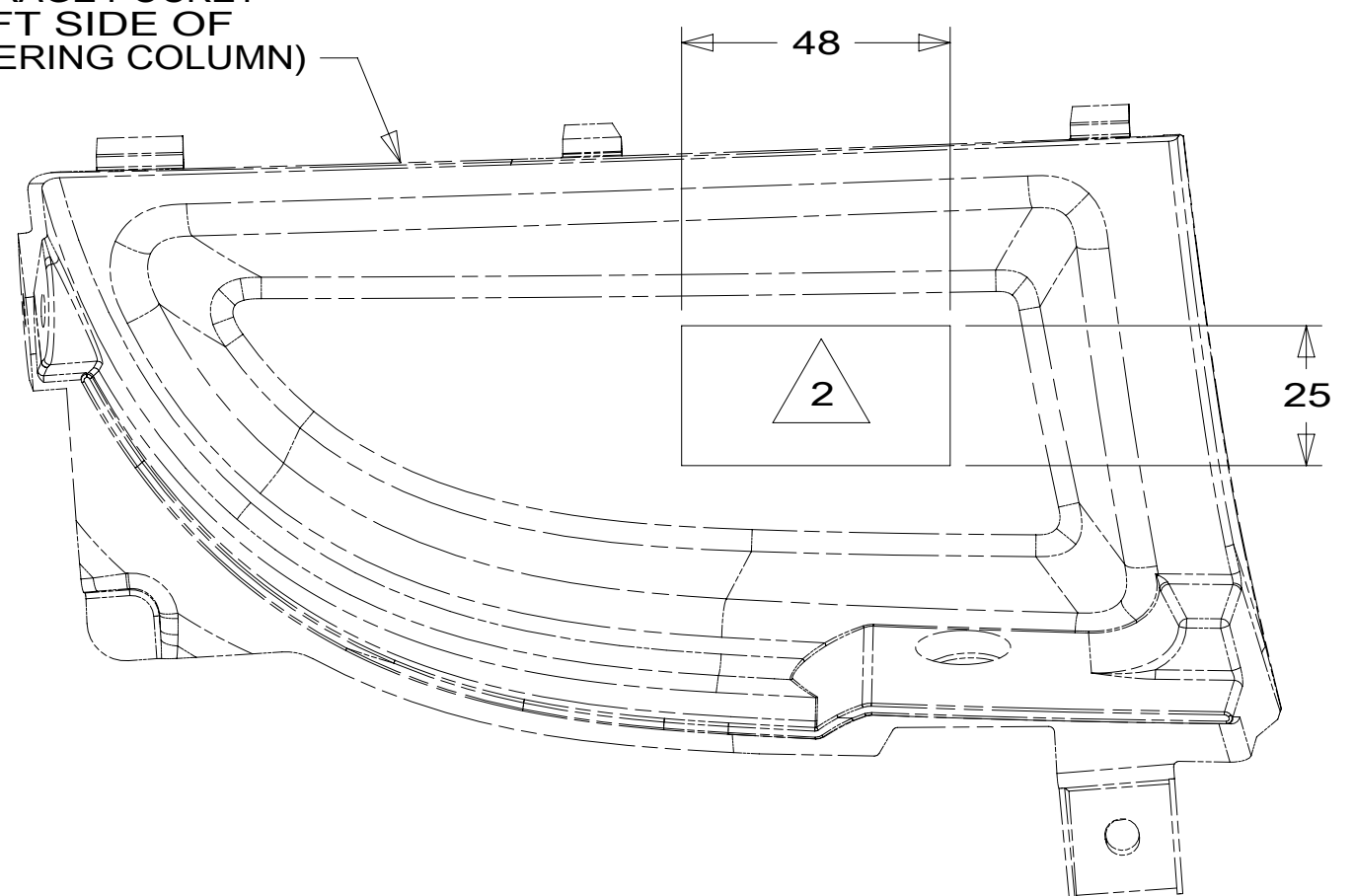
TO DRAIN  
PUMP

TO GROUND  
BOLT

STORAGE POCKET  
(LEFT SIDE OF  
STEERING COLUMN)

- 7 SECURE WIRE HARNESS WITH CABLE TIE 008343-02-000.
- 6 SEE WIRING INSTL-BODY,12V FOR ADDITIONAL INFORMATION.
- 5 SEE BATTERY INSTL FOR ADDITIONAL INFORMATION.
- 4 CLAMP 83610-02-000, SCREW G39-08-12U.
- 3 SEE CHASSIS ELECTRICAL BOX ASM FOR ADDITIONAL INFORMATION.
- 2 CUTOUT BACKSIDE OF POCKET TO DIMENSION SHOWN.

1. SECURE CONDUIT 41953, TAB AS REQUIRED,  
OVER ALL WIRES IN CONTACT WITH SHARP EDGES.



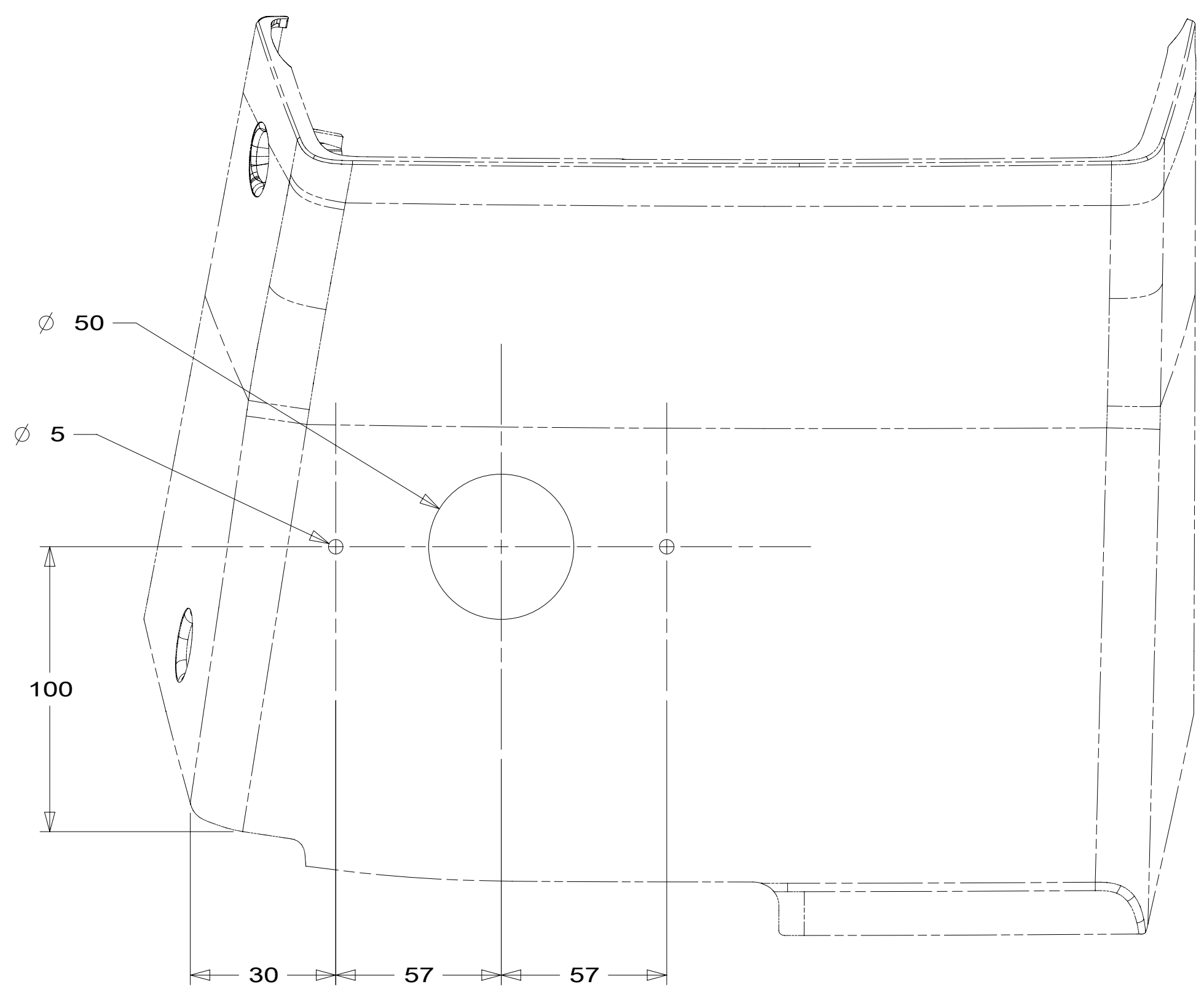
VIEW BA

FOR ELECTRICAL  
TORQUE  
SPECIFICATIONS  
SEE DWG NO.  
128783-01-000

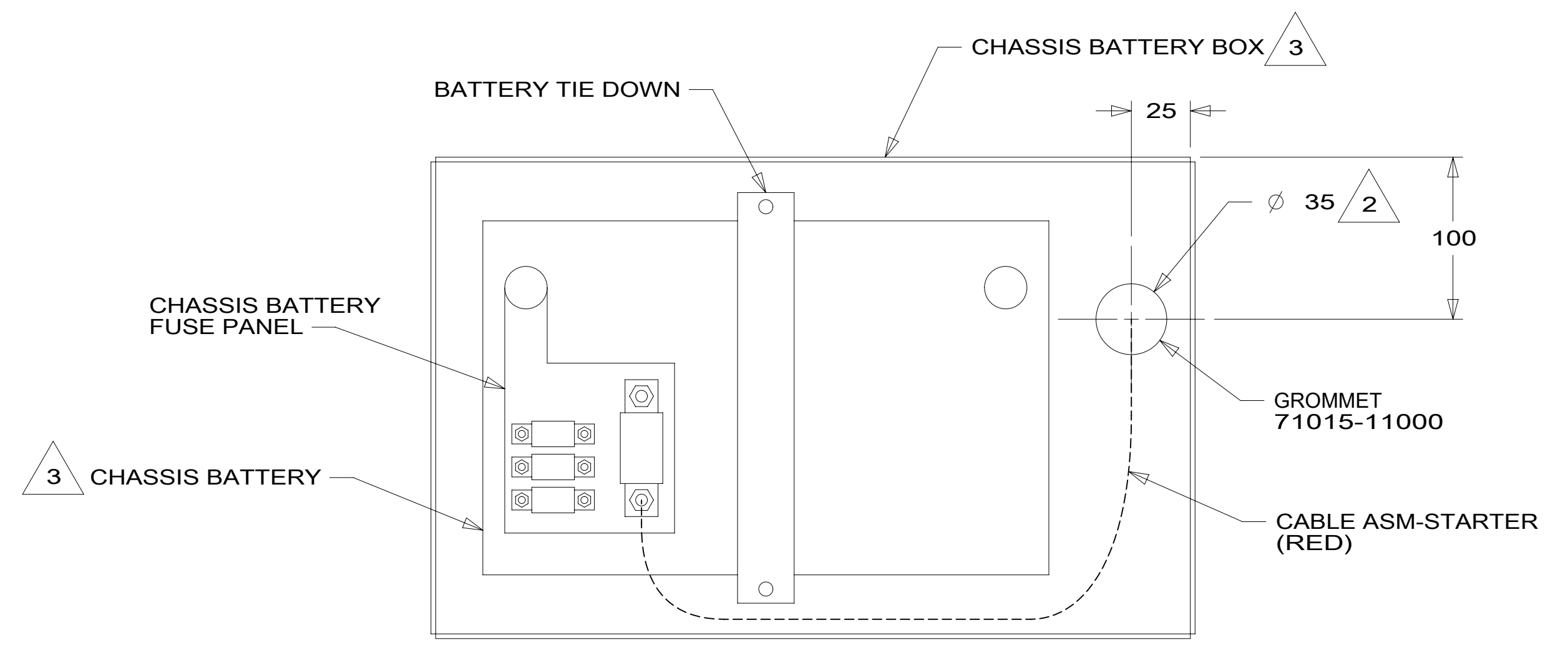
FOR  
ELECTRICAL  
CALLOUTS  
SEE DWG NO.  
121339-01-000

- 282 SOLAR PANEL - 100 WATT
- 1G8 GENERATOR-2800 WATT
- 1MS RAM-9,350# GVWR, GAS\_VAN
- 265 CODES/STANDARDS-CSA/CMVSS
- 1B1 CODES/STANDARDS USA

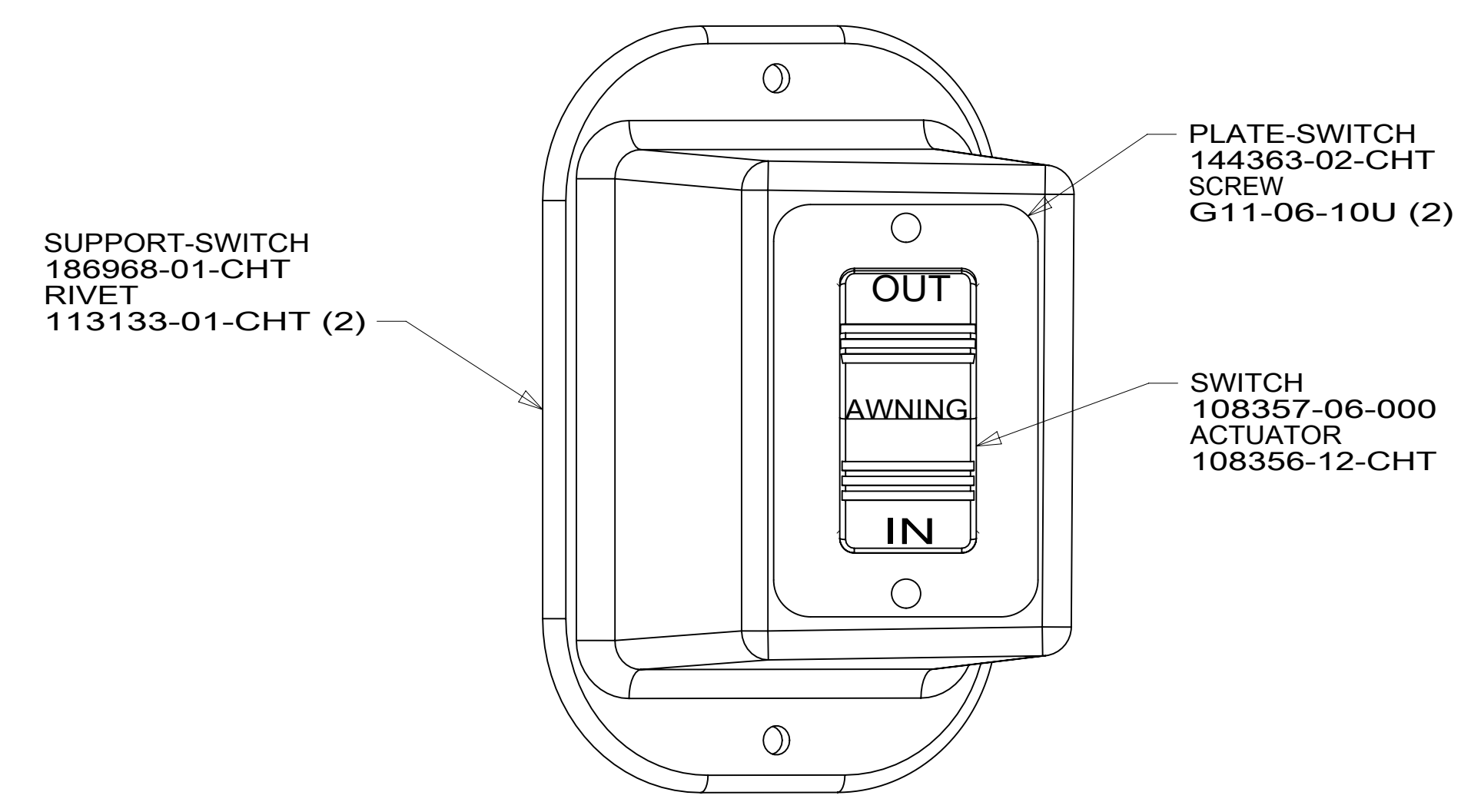
DESCRIPTION: <b>WIRING INSTL-CHASSIS</b>		
SHEET: 2 OF 4	ITEM/PART NO: 000180861 / 30072701000	REV



VIEW CA



DETAIL CB



DETAIL CC

- 3 LOCATED IN CAB FLOOR.
- 2 DRILL HOLE IN BOTTOM OF PLASTIC BATTERY BOX.

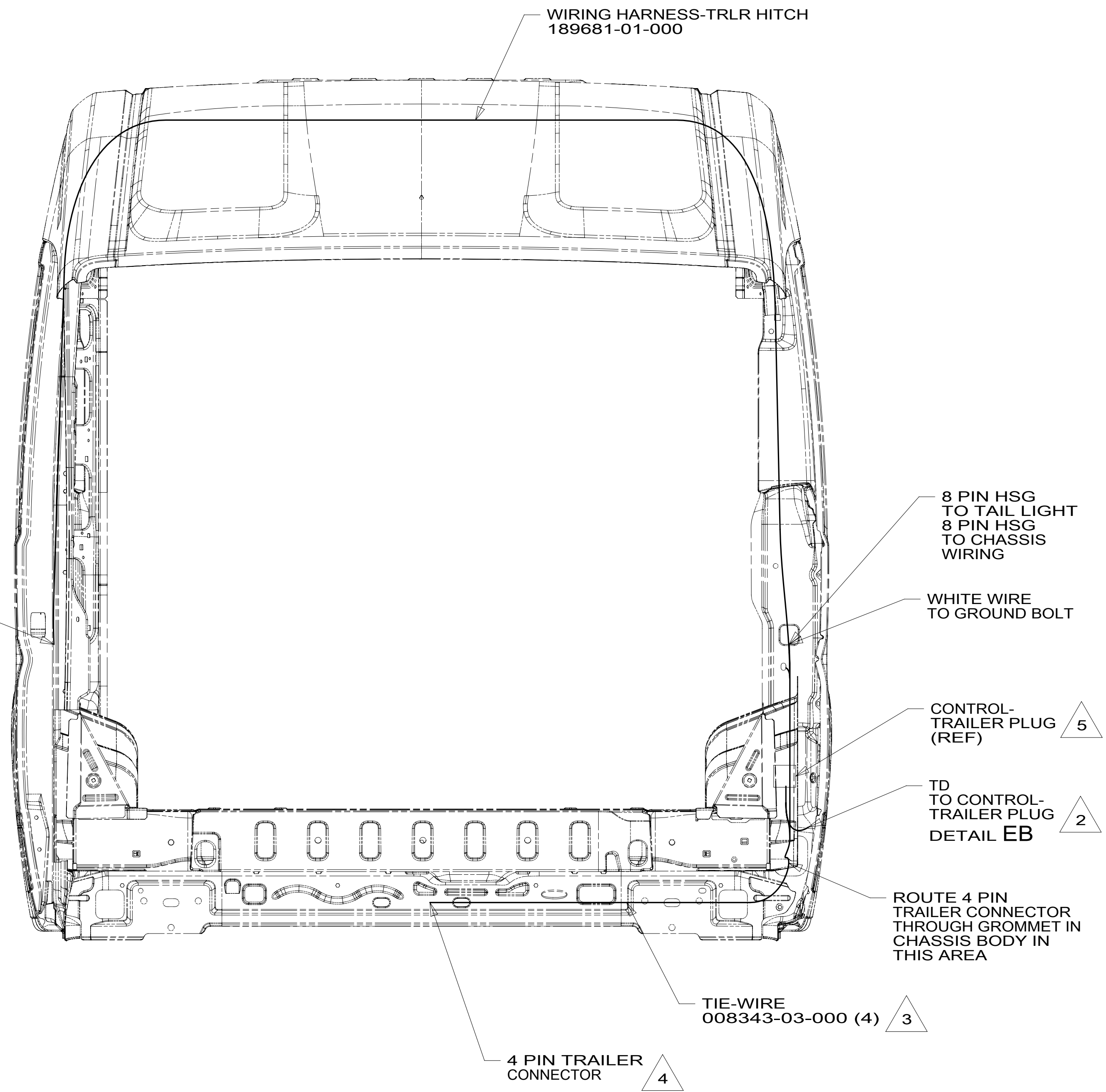
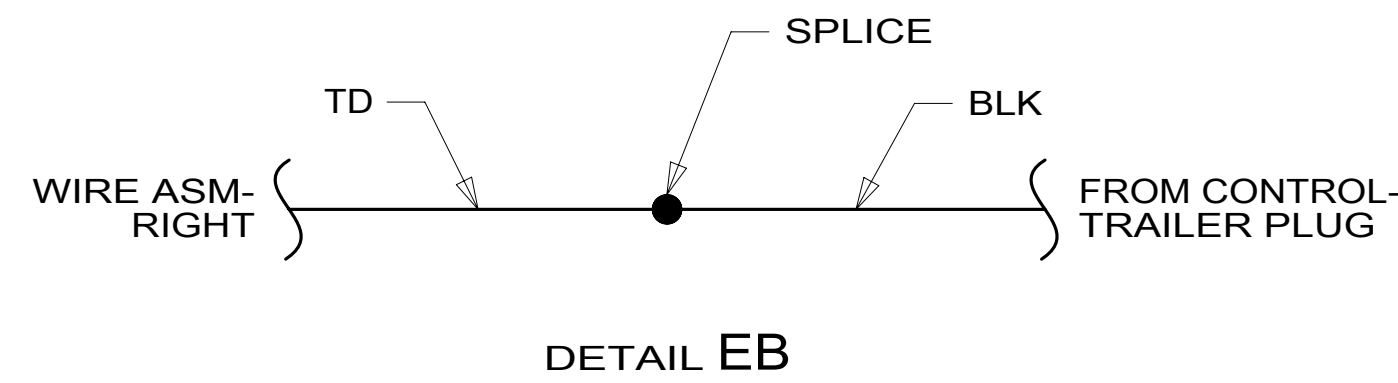
NOTES:  
1. SECURE CONDUIT 41953, TAB AS REQUIRED, OVER ALL WIRES IN CONTACT WITH SHARP EDGES.

- 1MS RAM-9,350# GVWR, GAS\_VAN
- 265 CODES/STANDARDS-CSA/CMVSS
- 1B1 CODES/STANDARDS USA

FOR ELECTRICAL TORQUE SPECIFICATIONS SEE DWG NO. 128783-01-000

FOR ELECTRICAL CALLOUTS SEE DWG NO. 121339-01-000

<span style="border: 1px solid black; border-radius: 50%; padding: 2px;">1B1</span> <span style="border: 1px solid black; border-radius: 50%; padding: 2px;">265</span> <span style="border: 1px solid black; border-radius: 50%; padding: 2px;">1MS</span>		
<b>DESCRIPTION:</b> <b>WIRING INSTL-CHASSIS</b>		
SHEET:	ITEM/PART NO.:	REV:
<b>3 OF 4</b>	<b>000180861 / 30072701000</b>	



- 5 CONTROL SUPPLIED WITH WIRING HARNESS-TRLR HITCH. SECURE CONTROL IN PLACE WITH DOUBLE SIDED TAPE SUPPLIED WITH WIRING HARNESS-TRLR HITCH.
- 4 WIRE TIE 4-PIN TRAILER PLUG TO HITCH ASSEMBLY NEAR RECEIVER.
- 3 WIRE TIE TRAILER WIRING BEHIND BUMPER.
- 2 SEE WIRING INSTL-BODY, 12V FOR ADDITIONAL INFORMATION.

NOTES:  
1. SECURE CONDUIT 41953, TAB AS REQUIRED, OVER ALL WIRES IN CONTACT WITH SHARP EDGES.

VIEW EA

FOR ELECTRICAL TORQUE SPECIFICATIONS SEE DWG NO. 128783-01-000

FOR ELECTRICAL CALLOUTS SEE DWG NO. 121339-01-000

- 1MS RAM-9,350# GVWR, GAS\_VAN
- 265 CODES/STANDARDS-CSA/CMVSS
- 1B1 CODES/STANDARDS USA

DESCRIPTION: <b>WIRING INSTL-CHASSIS</b>		
SHEET: 4 OF 4	ITEM/PART NO: 000180861 / 30072701000	REV