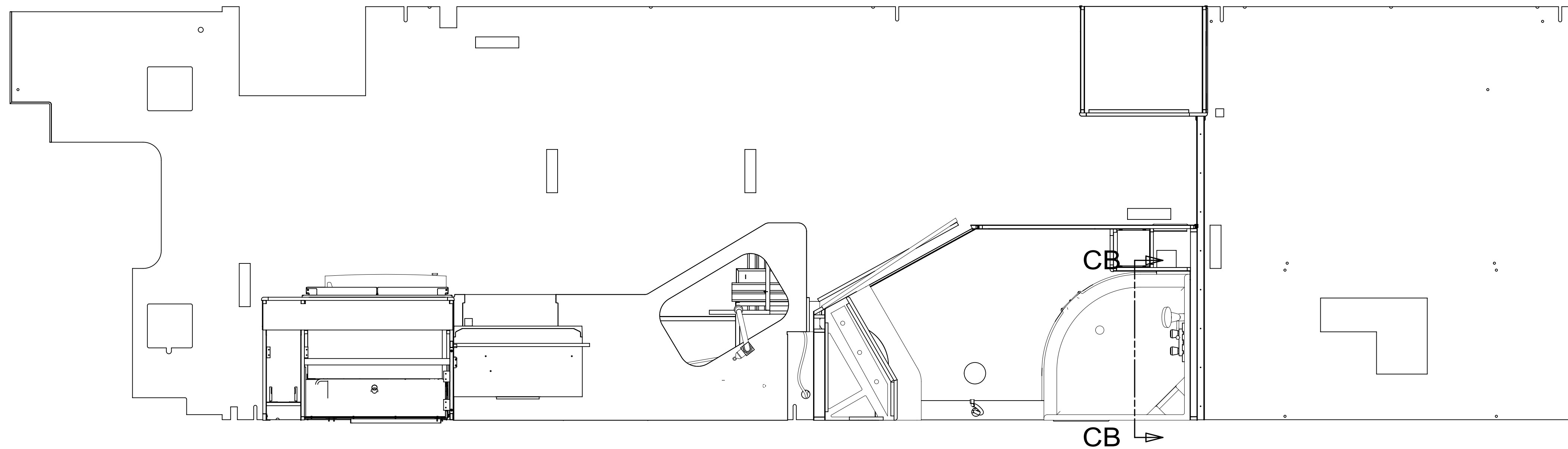


REV	ZONE	REVISION RECORD	DATE	DFTR-ORIG
A	---	INITIAL RELEASE	11/02/15	3660
B	SHT4	REPLACE PANEL ASM	3/1/16	3804



- 10 ALL CRIMP FITTING TO 3/4" PEX TUBING REQUIRE 3/4" CLAMP 140171-05-000.
9. SEAL VENT HOLE IN DOOR W/SILICONE SEALANT.
8. ALL CRIMP FITTINGS TO 1/2" PEX TUBING REQUIRE 1/2" CLAMP 140171-03-000.
7. ALL CRIMP FITTINGS TO 5/8" FLEX TUBING REQUIRE 5/8" CLAMP 140171-04-000.
- 6 LABEL HOT AND COLD SUPPLY TUBES AND TAPE FITTING TO TUBE BEFORE CABINET SET TO PREVENT MOVEMENT.
- 5 ADD PIPE WRAP (LADDER SCRAP 110157-02-000) INSULATION.
- 4 ADD TEFLON TAPE 010405-02-000.
3. ALL TUBING TO BE SECURED AT 1200 INTERVALS MAXIMUM WITH CLAMP 010495-01-000 AND SCREW 000G67-10-12U OR EQUIVALENT.
2. TUBING TO BE INSTALLED WITH SUFFICIENT SLOPE TO PROVIDE DRAINAGE TO NEAREST VALVE.
1. PLASTIC FITTINGS TO BE SEALED WITH SEALANT 084456-01-000.

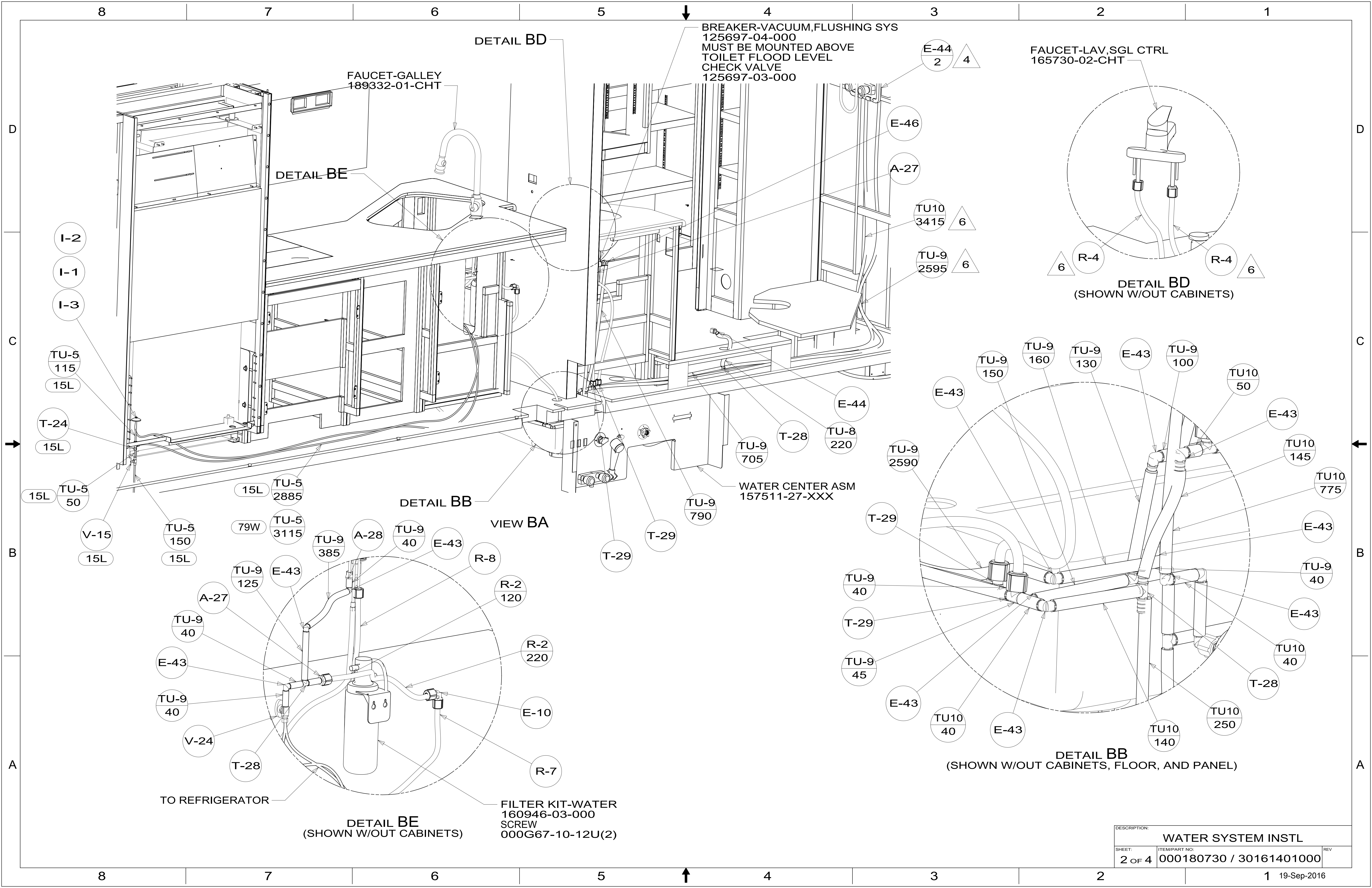
- 15L RESIDENTIAL REFRIGERATOR PKG
- 79W REFRIGERATOR-4 DOOR
- 21S WASHER & DRYER-PAIR
- 21M WASHER/DRYER PREP

WINNEBAGO
COPYRIGHT 2016 WINNEBAGO INDUSTRIES, INC.

DSNR:	ALL DIMENSIONS ARE IN MILLIMETERS	
DFTR:	MATERIAL:	
UNSPECIFIED TOLERANCES:	WHOLE DIM (X) :	3
	ONE-PLACE (X.X) :	1.5
	TWO-PLACE (X.XX) :	0.50
	ANGLE :	1°
REFER TO ES0018 FOR FASTENER TIGHTENING GUIDELINES	WEIGHT: (LBS)	FIRST USED: (REF)
DESCRIPTION: WATER SYSTEM INSTL		
SHEET: 1 OF 4	ITEM/PART NO: 000180730 / 30161401000	REV:

X-X
FOR WATER CALLOUTS SEE DWG NO. 116230-01-000

NOTES:



DETAIL BD

BREAKER-VACUUM, FLUSHING SYS
125697-04-000
MUST BE MOUNTED ABOVE
TOILET FLOOD LEVEL
CHECK VALVE
125697-03-000

FAUCET-LAV, SGL CTRL
165730-02-CHT

FAUCET-GALLEY
189332-01-CHT

DETAIL BE

DETAIL BD
(SHOWN W/OUT CABINETS)

WATER CENTER ASM
157511-27-XXX

DETAIL BB
(SHOWN W/OUT CABINETS, FLOOR, AND PANEL)

DETAIL BE
(SHOWN W/OUT CABINETS)

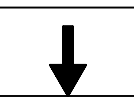
FILTER KIT-WATER
160946-03-000
SCREW
000G67-10-12U(2)

TO REFRIGERATOR

VIEW BA

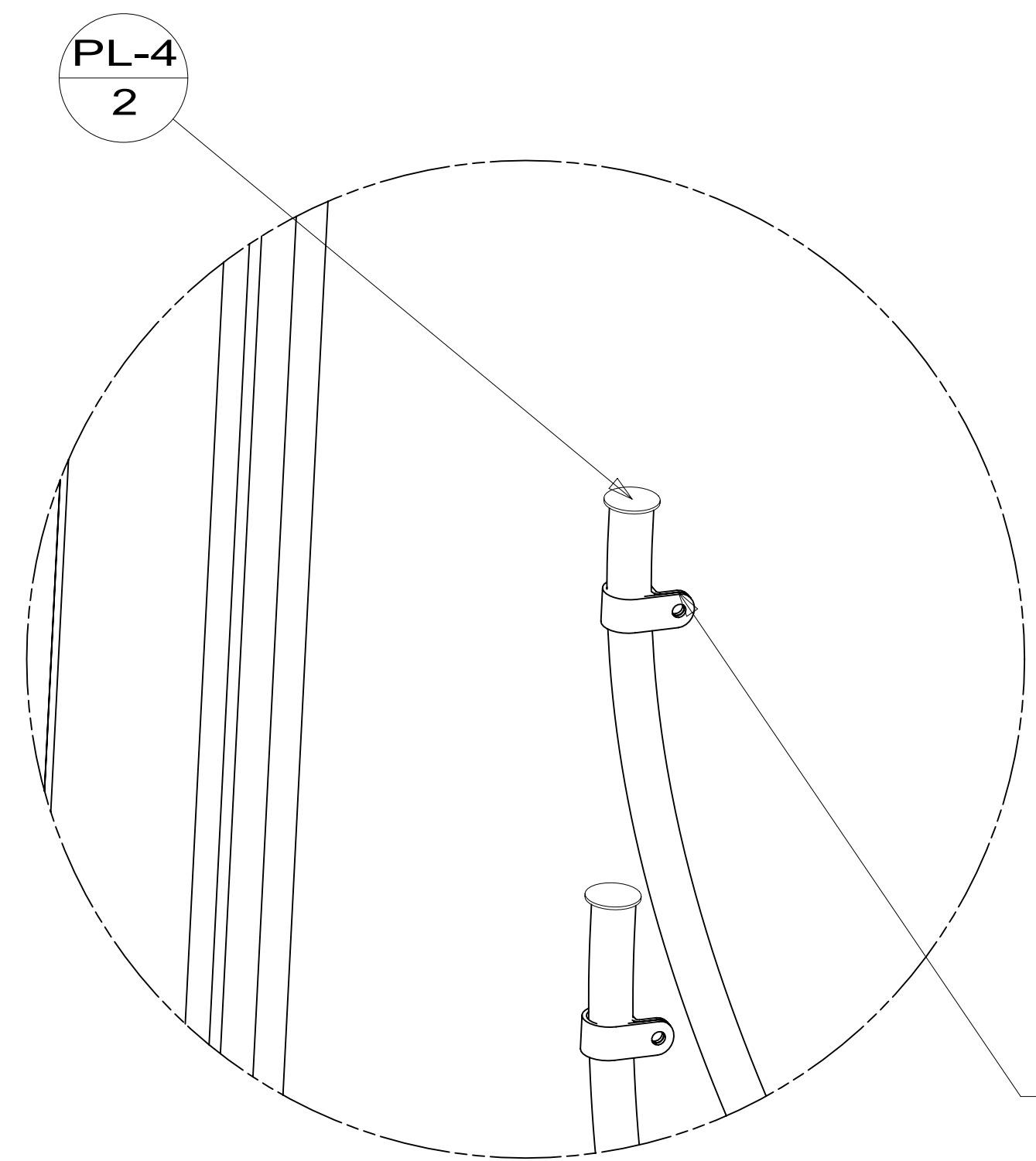
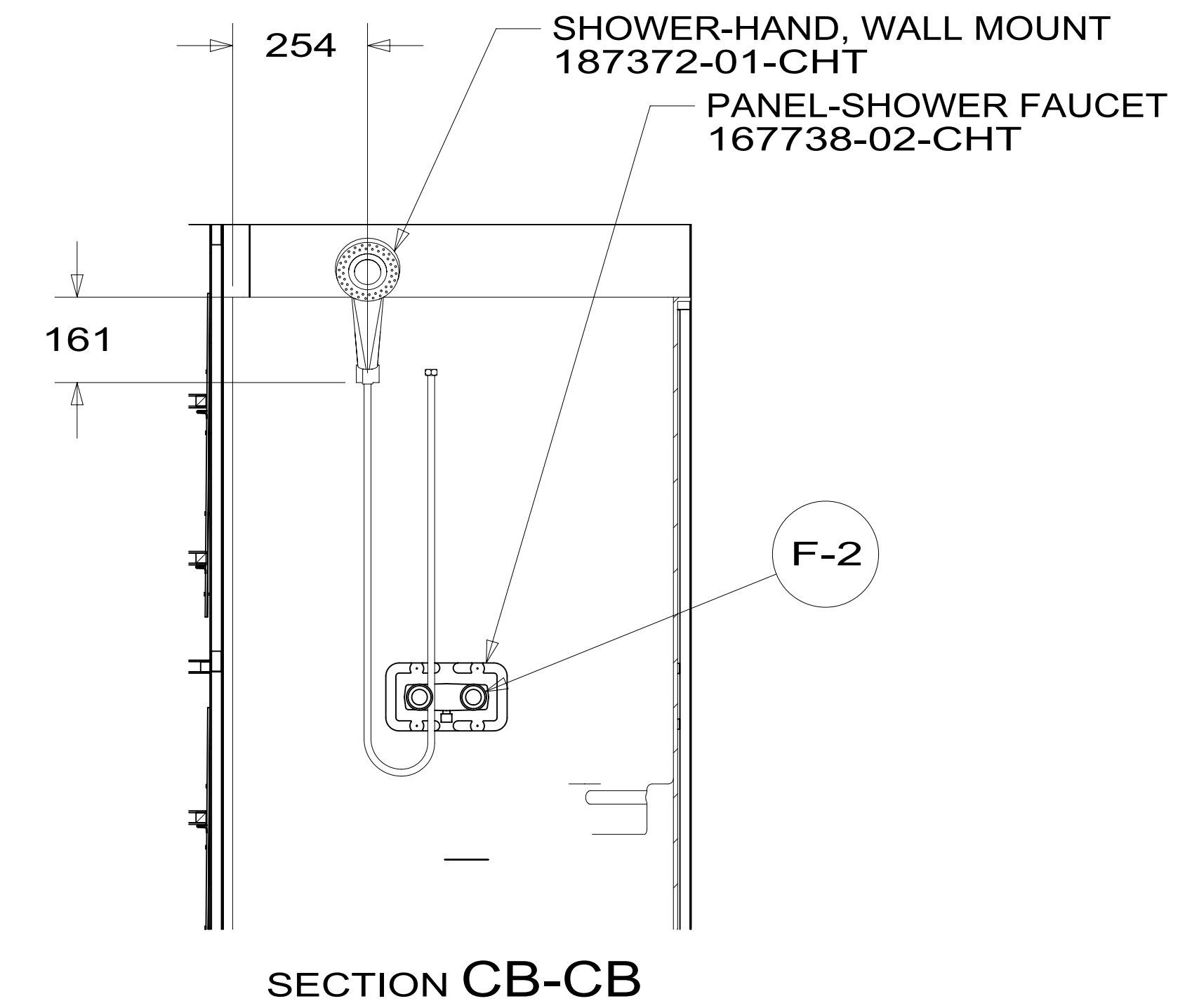
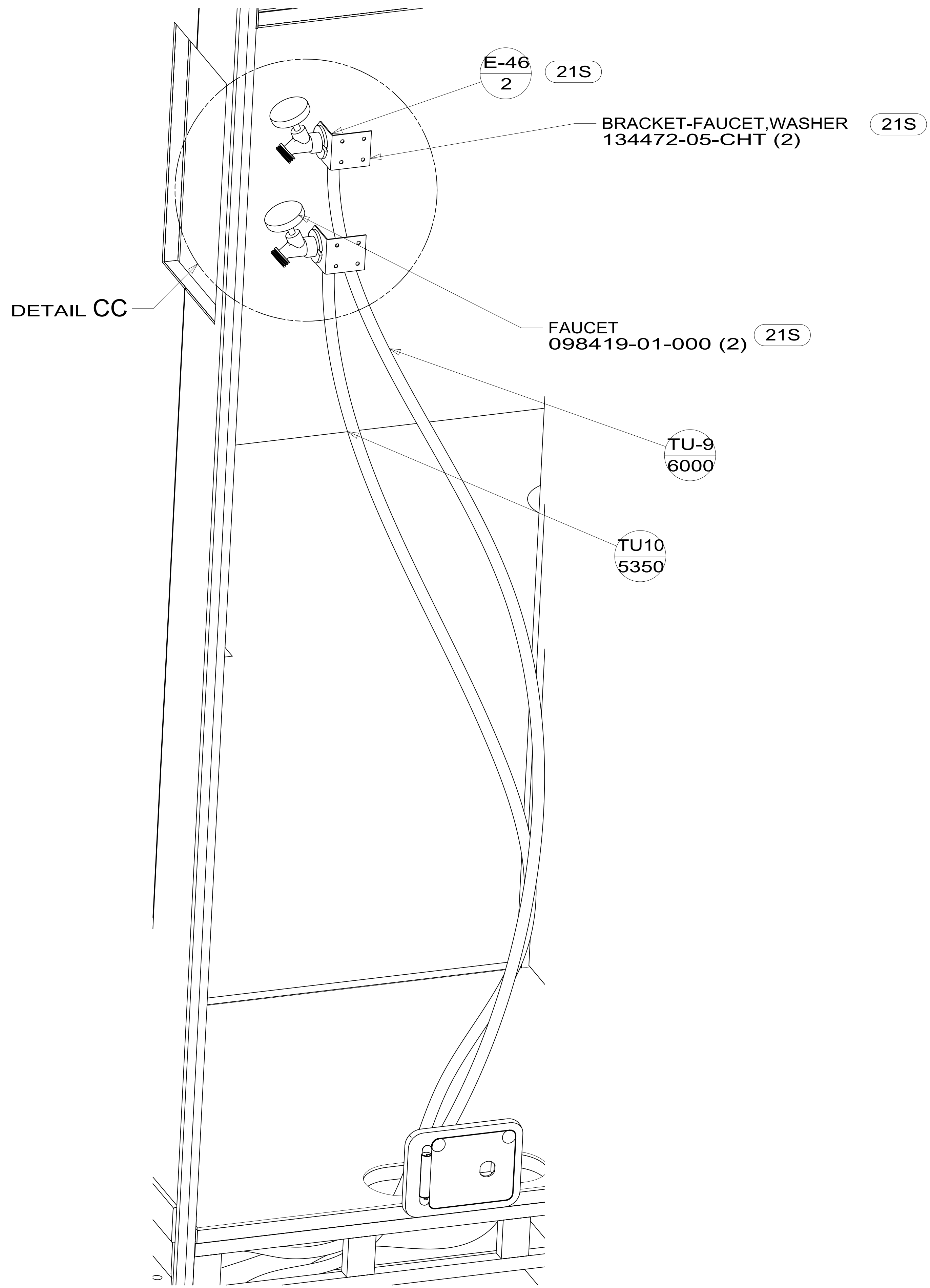
DESCRIPTION:		
WATER SYSTEM INSTL		
SHEET:	ITEM/PART NO.:	REV
2 OF 4	000180730 / 30161401000	

8 7 6 5 4 3 2 1



D

D



VIEW CA

DETAIL CC (21M)

SECTION CB-CB



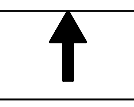
B

B

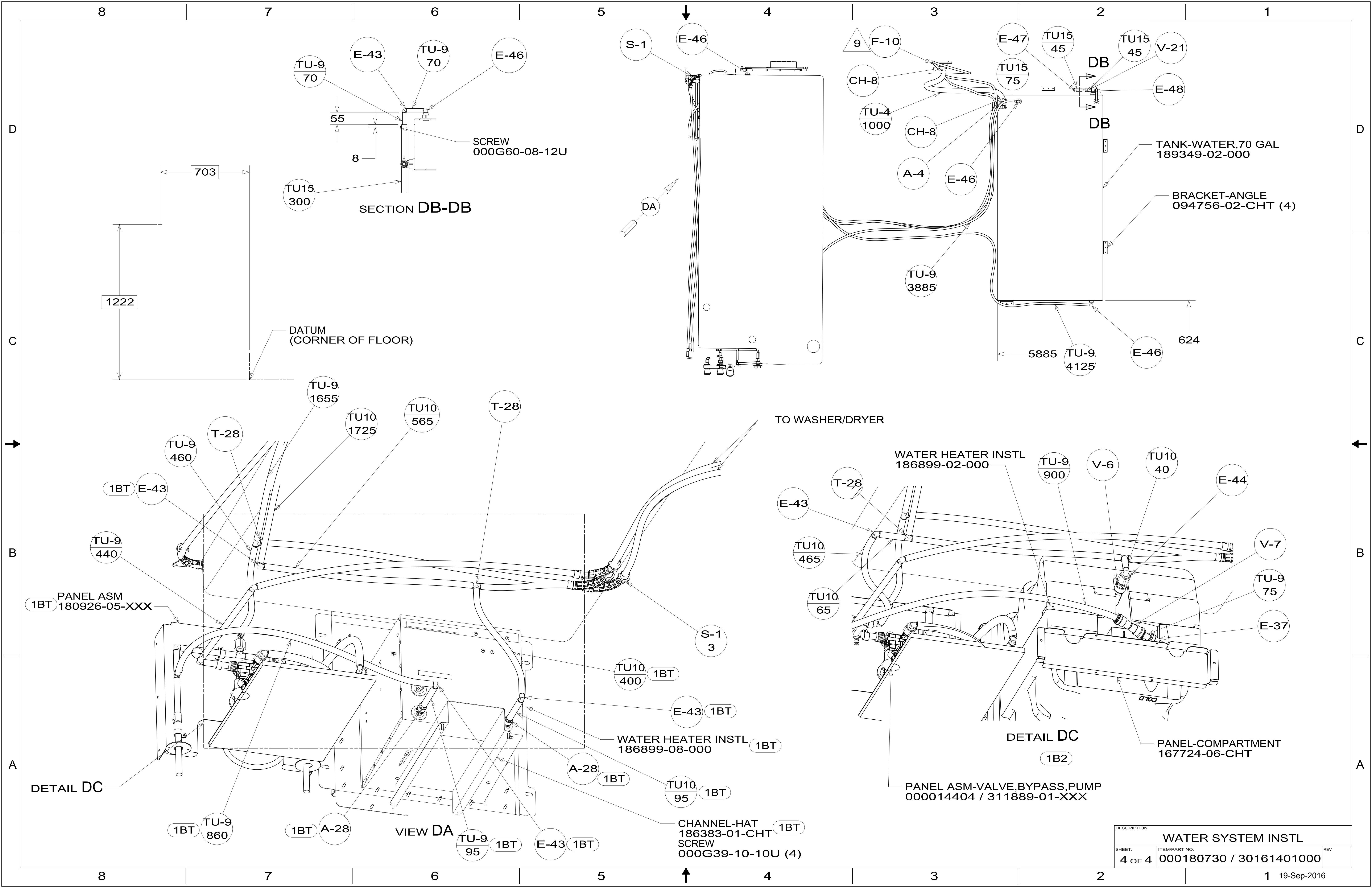
A

A

8 7 6 5 4 3 2 1



DESCRIPTION:		
WATER SYSTEM INSTL		
SHEET:	ITEM/PART NO.:	REV
3 OF 4	000180730 / 30161401000	



DESCRIPTION:		
WATER SYSTEM INSTL		
SHEET:	ITEM/PART NO.:	REV
4 OF 4	000180730 / 30161401000	