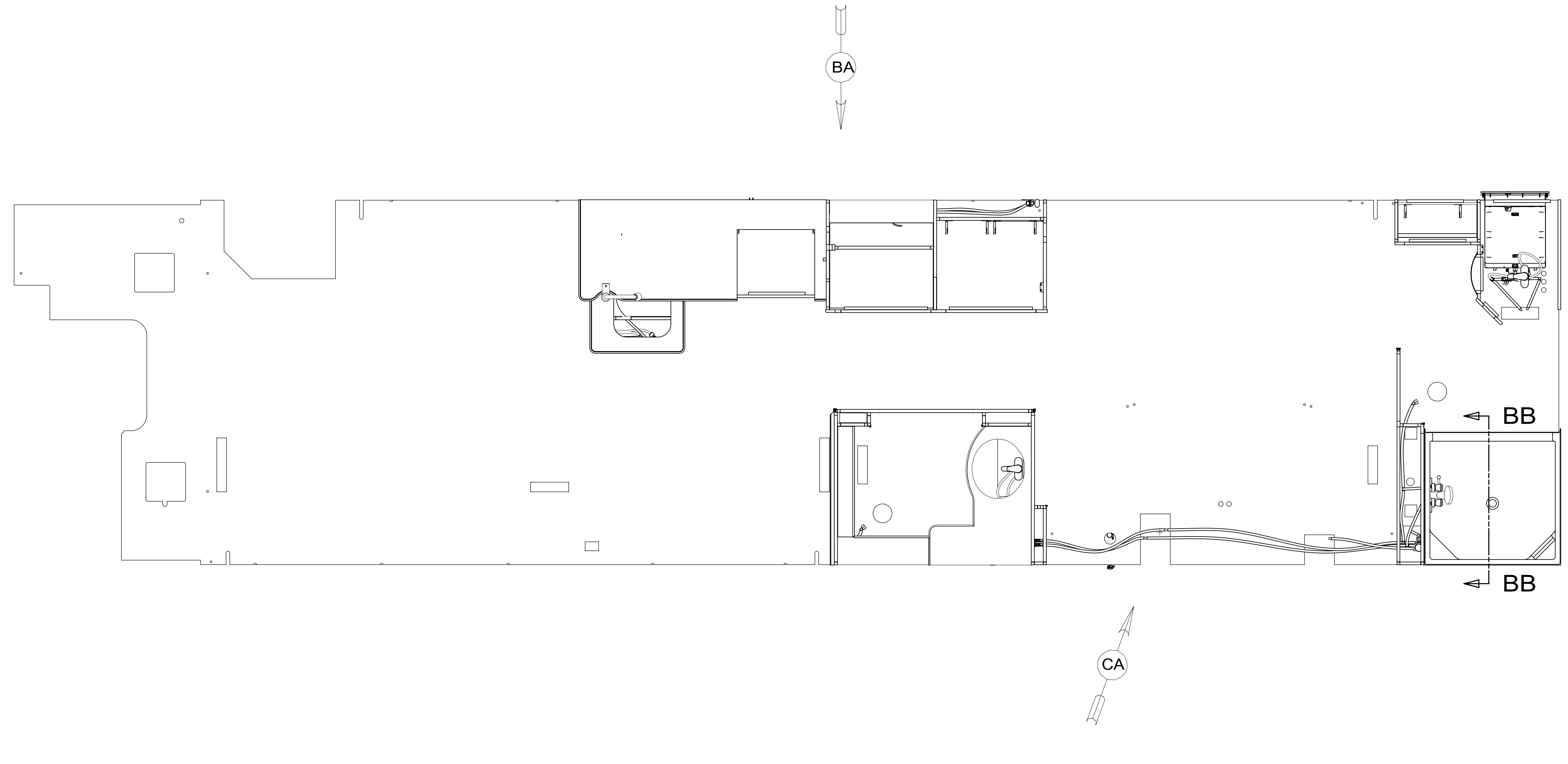


REV	ZONE	REVISION RECORD	DATE	DFTR-ORIG
A	---	INITIAL RELEASE	10/12/15	3650-1027
B	SSEA	ADD CALLOUT FOR TU9/500, REMOVED S-1	10/19/15	3650-3508
C	S2C8	CHANGE LENGTHS OF TUBES IN SLIDEOUT ROOM	12/09/15	3650-1027
D	---	CHG LENGTH SHT2	6-21-16	1600-2314
E	---	NEW FAUCET	07/14/16	3650-2747



- 10. SEAL VENT HOLE IN DOOR W/SILICONE SEALANT.
- 9. ALL CRIMP FITTINGS TO 3/4" PEX TUBING REQUIRE 3/4" CLAMP 140171-05-000.
- 8. ALL CRIMP FITTINGS TO 1/2" PEX TUBING REQUIRE 1/2" CLAMP 140171-03-000.
- 7. ALL CRIMP FITTINGS TO 5/8" FLEX TUBING REQUIRE 5/8" CLAMP 140171-04-000.
- 6. LABEL HOT AND COLD SUPPLY TUBES AND TAPE FITTING TO TUBE BEFORE CABINET SET TO PREVENT MOVEMENT.
- 5. ADD PIPE WRAP (LADDER SCRAP 110157-02-000) INSULATION.
- 4. ADD TEFLON TAPE 010405-02-000.
- 3. ALL TUBING TO BE SECURED AT 1200 INTERVALS MAXIMUM WITH CLAMP 010495-01-000 AND SCREW 000G67-10-12U OR EQUIVALENT.
- 2. TUBING TO BE INSTALLED WITH SUFFICIENT SLOPE TO PROVIDE DRAINAGE TO NEAREST VALVE.
- 1. PLASTIC FITTINGS TO BE SEALED WITH SEALANT 084456-01-000.

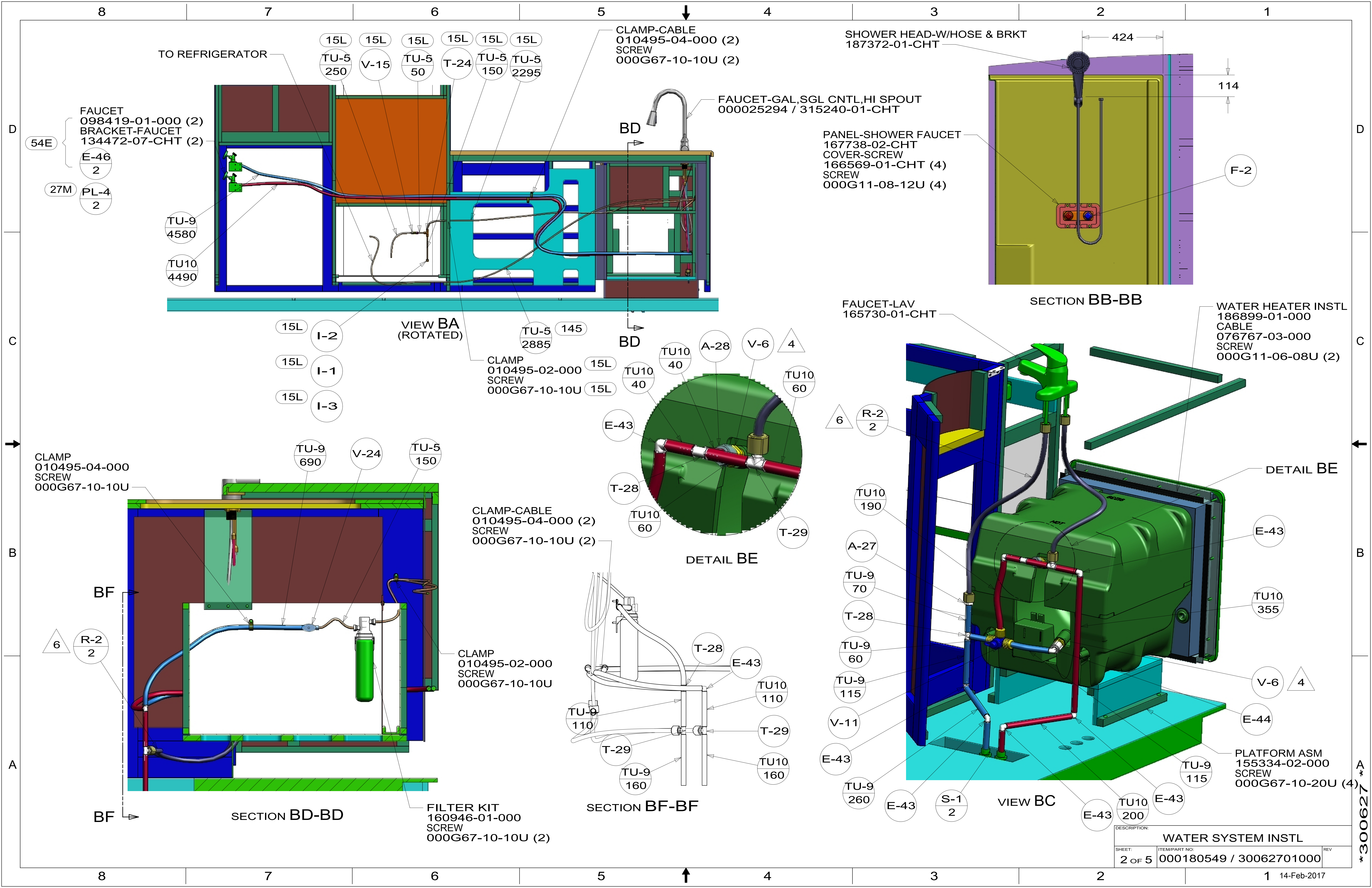
- 54E WASHER/DRYER COMBO
- 21M WASHER/DRYER PREP
- 145 REFR-EXTRA CAP W/ICEMAKER
- 15L RESIDENTIAL REFRIGERATOR PKG

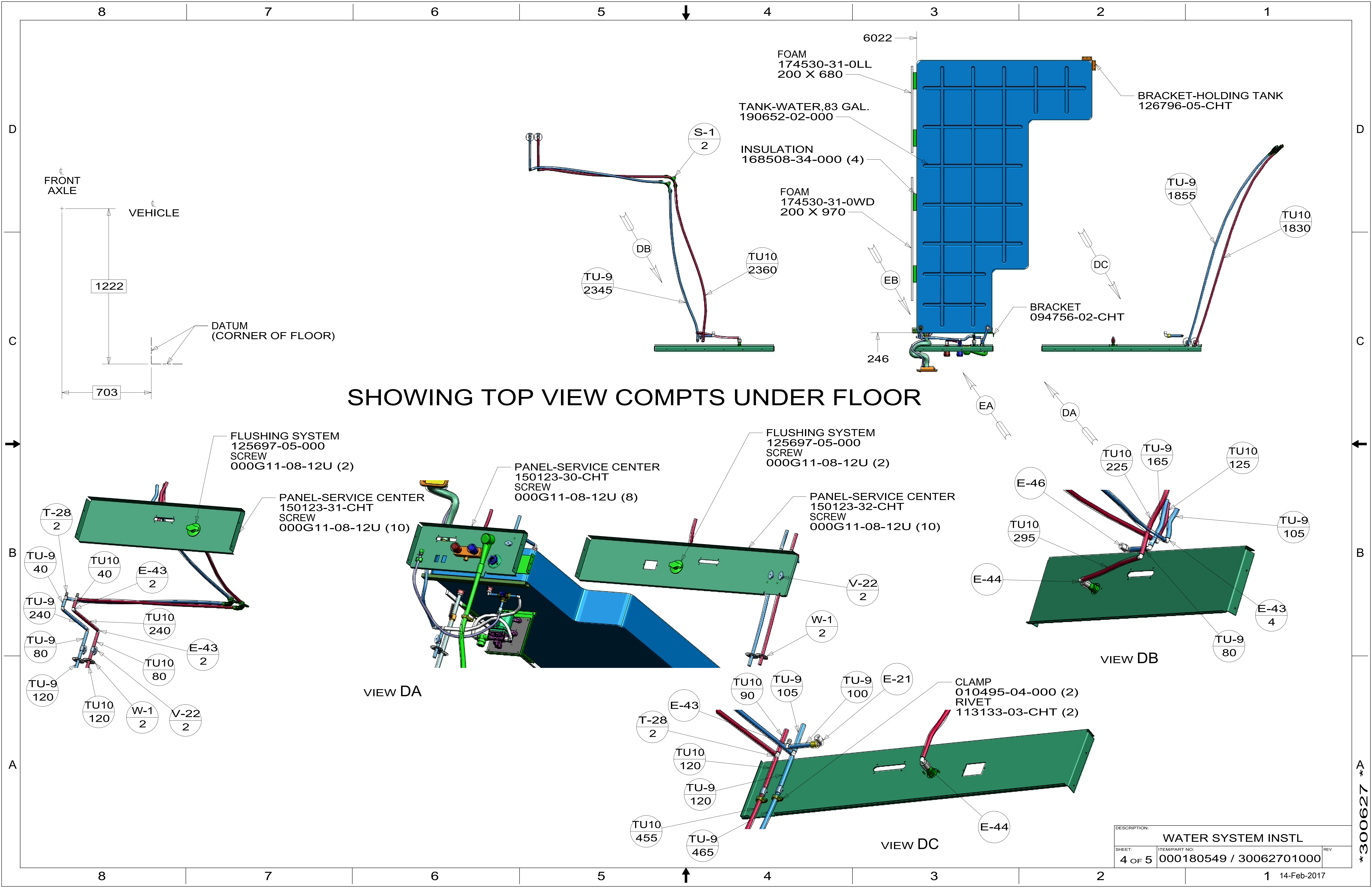


DSNR:		ALL DIMENSIONS ARE IN MILLIMETERS	
DFTR:		MATERIAL:	
UNSPECIFIED TOLERANCES:			
WHOLE DIM (X)	3		
ONE-PLACE (X.X)	1.5		
TWO-PLACE (X.XX)	0.50		
ANGLE	1°		
REFER TO ES0018 FOR FASTENER TIGHTENING GUIDELINES		WEIGHT: (LBS)	FIRST USED: (REF)
			16 D36Z
DESCRIPTION: WATER SYSTEM INSTL			
SHEET: 1 OF 5	ITEM/PART NO: 000180549 / 30062701000	REV:	

X-X
FOR WATER CALLOUTS SEE DWG NO. 116230-01-000

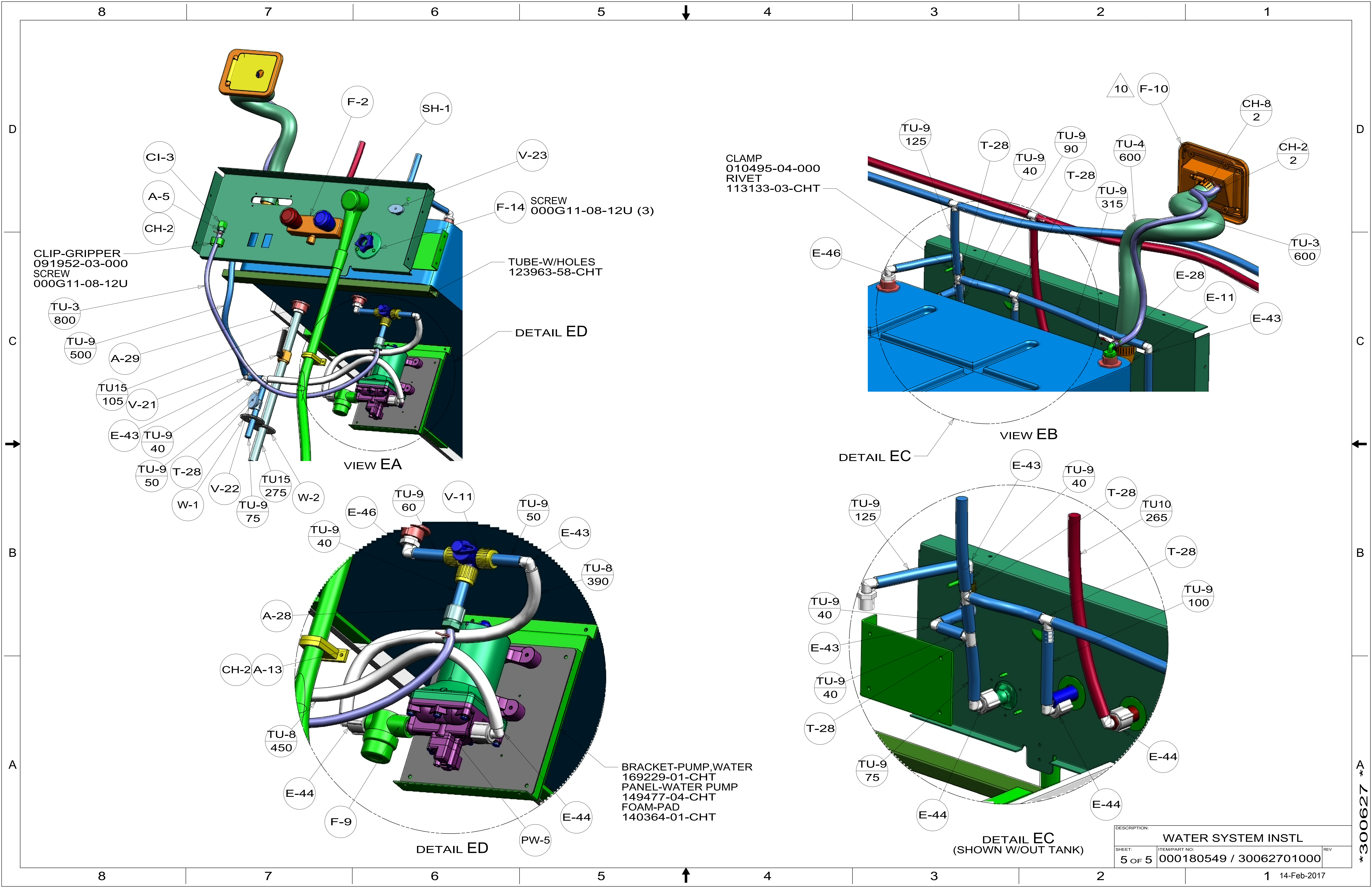
300627





DESCRIPTION:		
WATER SYSTEM INSTL		
SHEET:	ITEM/PART NO.:	REV
4 OF 5	000180549 / 30062701000	

*300627



DESCRIPTION:		
WATER SYSTEM INSTL		
SHEET:	ITEM/PART NO.:	REV
5 OF 5	000180549 / 30062701000	

*300627