

- NOTES:
- 5 DIMENSIONS FROM TUBES OF FRAME TO EDGE OF CONTROL MODULE.
 - 4 WIRE PASSES THROUGH FLOOR IN THIS AREA.
 - 3 PLACE CROSS LOCATOR ON SENSOR OVER DIMPLES ON TANK.
 - 2. ROUTE TANK SENSOR WIRES SO THEY DO NOT PASS OVER SENSORS. USE WIRE TIE MOUNT 155366-01-000 AND WIRE TIE 8343-01-000 AS NEEDED. TANK SURFACE MUST BE CLEANED USING ISOPROPYL ALCOHOL AND PRIMED WITH PRIMER 94.
 - 1. AT MINIMUM ALL WIRES TO BE SUPPORTED AND SECURED PER CODE REQUIREMENTS. USE CLAMP 10495 OR 10497 OR WIRE TIE 8343 OR 108046 AND SCREW G67-XX-XXX OR G56-XX-XXX AS APPROPRIATE FOR INSTALLATION.

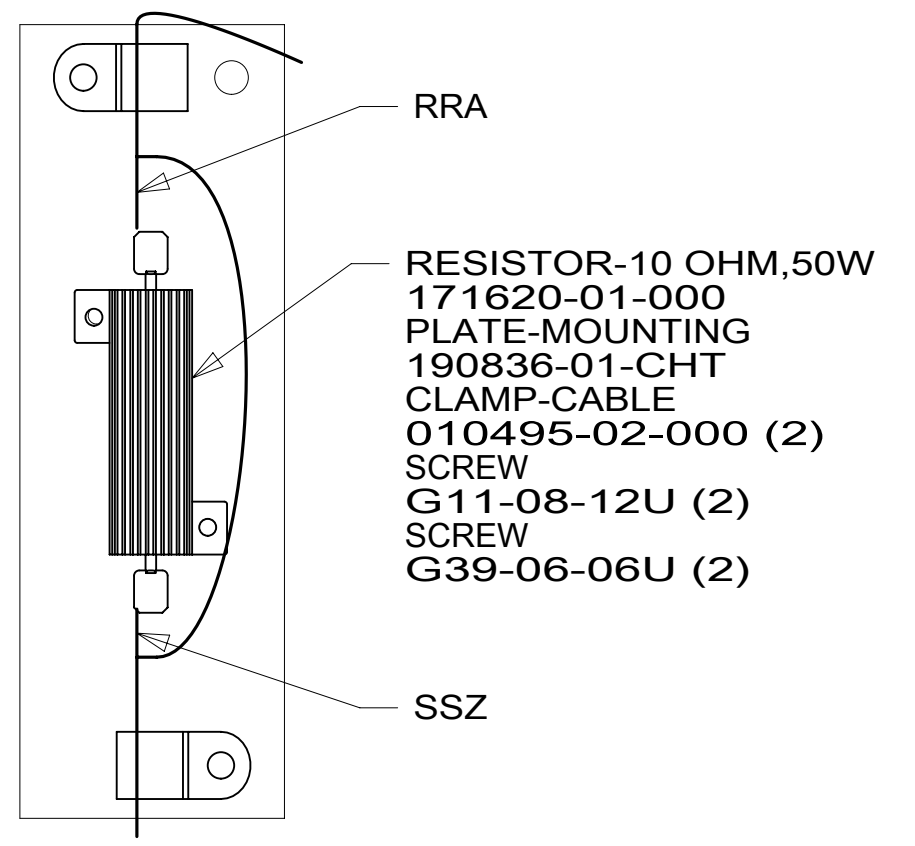
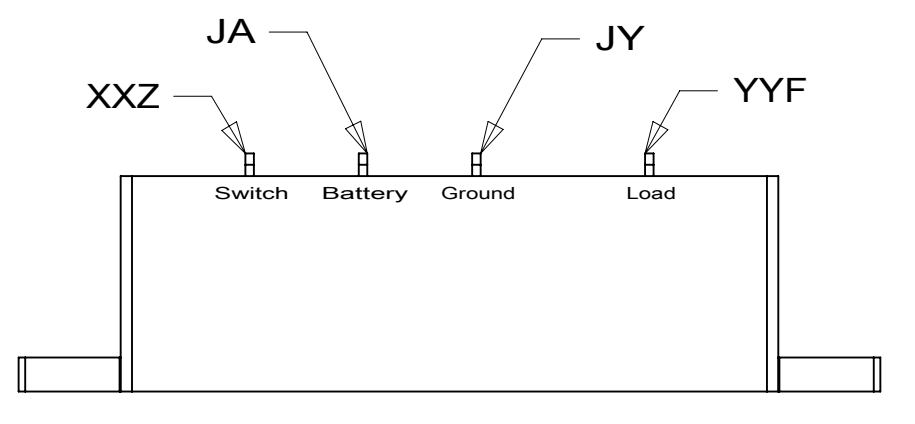
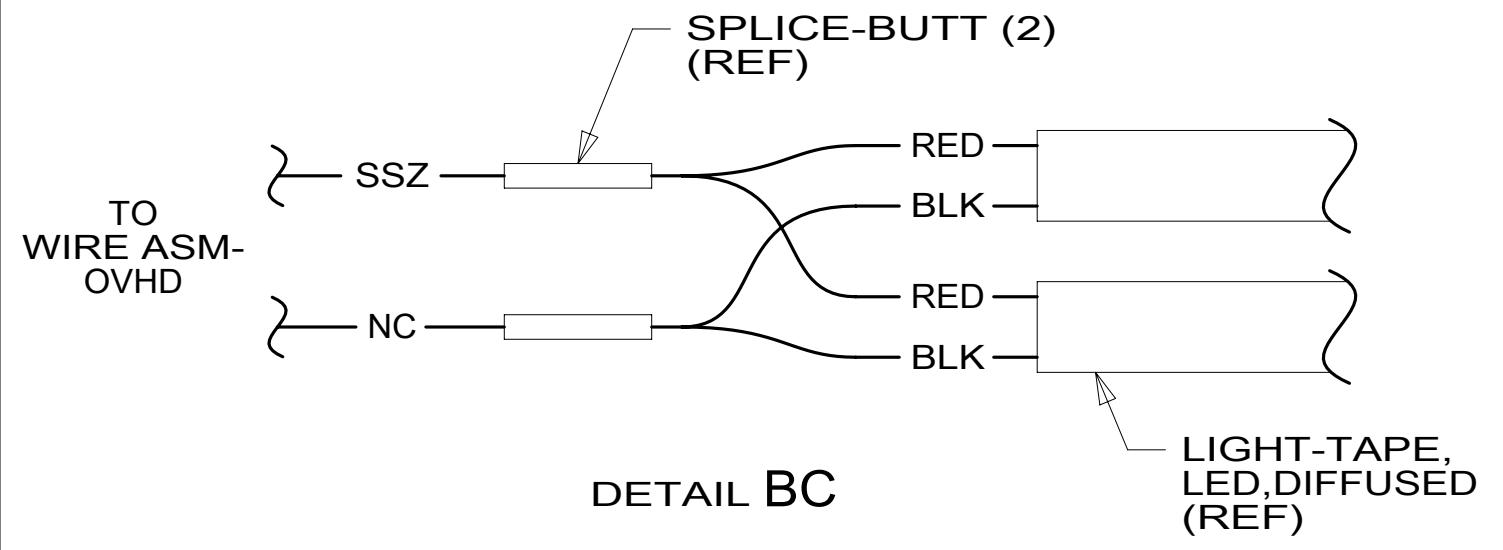
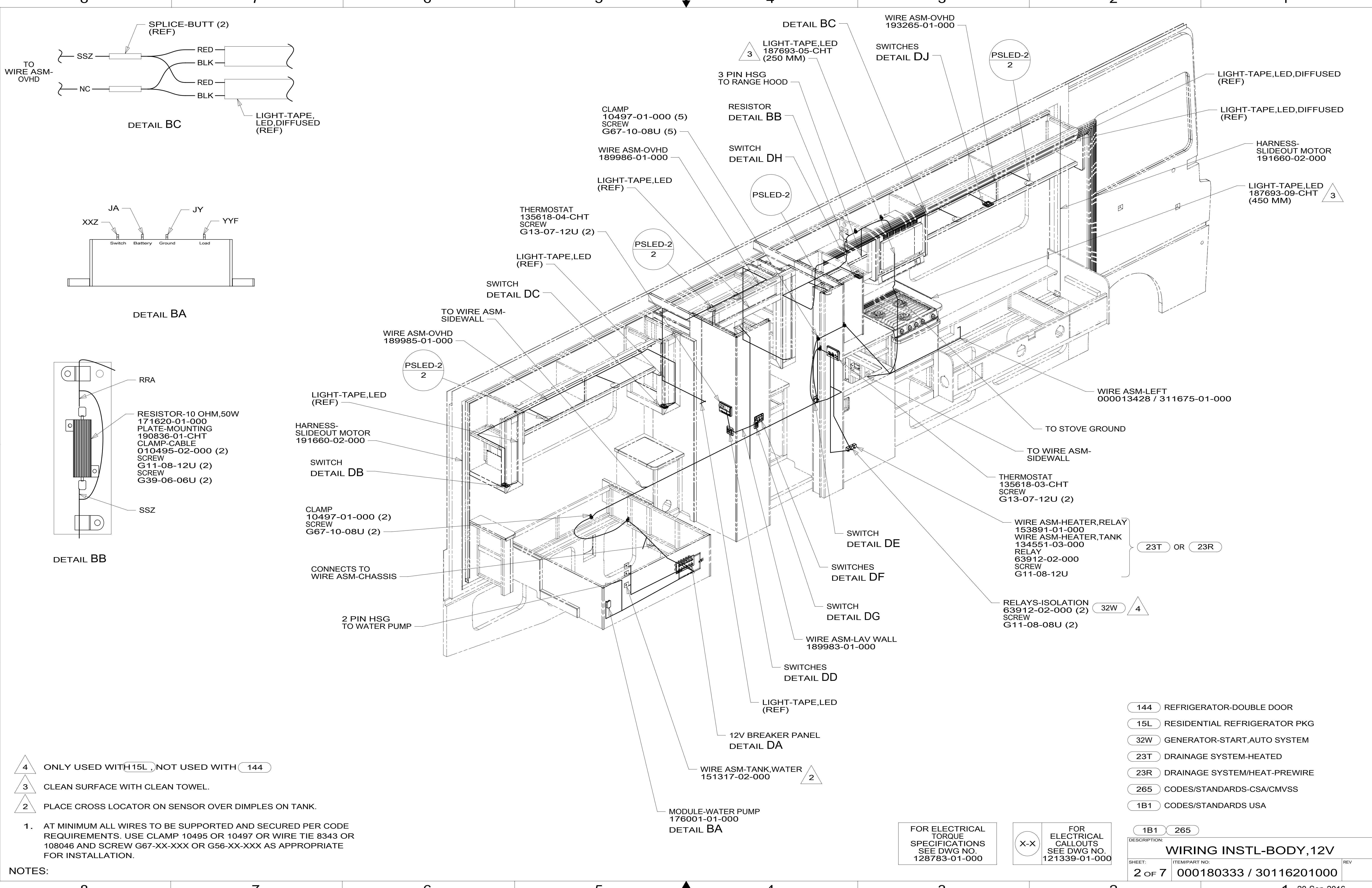
FOR ELECTRICAL TORQUE SPECIFICATIONS SEE DWG NO. 128783-01-000

FOR ELECTRICAL CALLOUTS SEE DWG NO. 121339-01-000

- 265 CODES/STANDARDS-CSA/CMVSS
- 1B1 CODES/STANDARDS USA
- 1B1 265

WINNEBAGO
COPYRIGHT 2016 WINNEBAGO INDUSTRIES, INC.

DSNR:	ALL DIMENSIONS ARE IN MILLIMETERS	
DFFR:		
UNSPECIFIED TOLERANCES:	MATERIAL:	
WHOLE DIM (X) : 3		
ONE-PLACE (X.X) : 1.5		
TWO-PLACE (X.XX) : 0.50		
ANGLE : 1°		
REFER TO ES0018 FOR FASTENER TIGHTENING GUIDELINES	WEIGHT: (LBS)	FIRST USED:
		16 A31C
DESCRIPTION: WIRING INSTL-BODY, 12V		
SHEET: 1 OF 7	ITEM/PART NO: 000180333 / 30116201000	REV:



- 4 ONLY USED WITH 15L, NOT USED WITH 144
- 3 CLEAN SURFACE WITH CLEAN TOWEL.
- 2 PLACE CROSS LOCATOR ON SENSOR OVER DIMPLES ON TANK.

1. AT MINIMUM ALL WIRES TO BE SUPPORTED AND SECURED PER CODE REQUIREMENTS. USE CLAMP 10495 OR 10497 OR WIRE TIE 8343 OR 108046 AND SCREW G67-XX-XXX OR G56-XX-XXX AS APPROPRIATE FOR INSTALLATION.

NOTES:

FOR ELECTRICAL TORQUE SPECIFICATIONS SEE DWG NO. 128783-01-000

FOR ELECTRICAL CALLOUTS SEE DWG NO. 121339-01-000

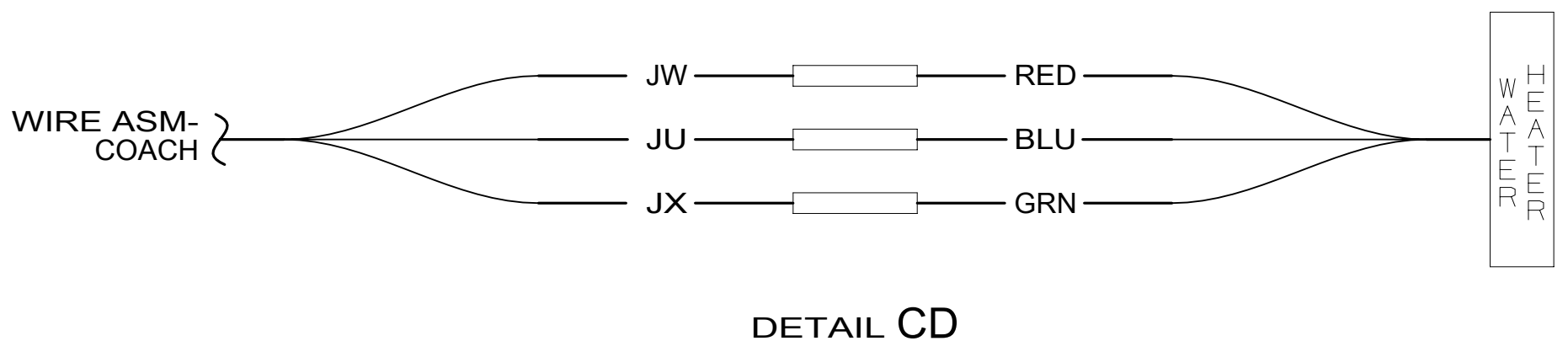
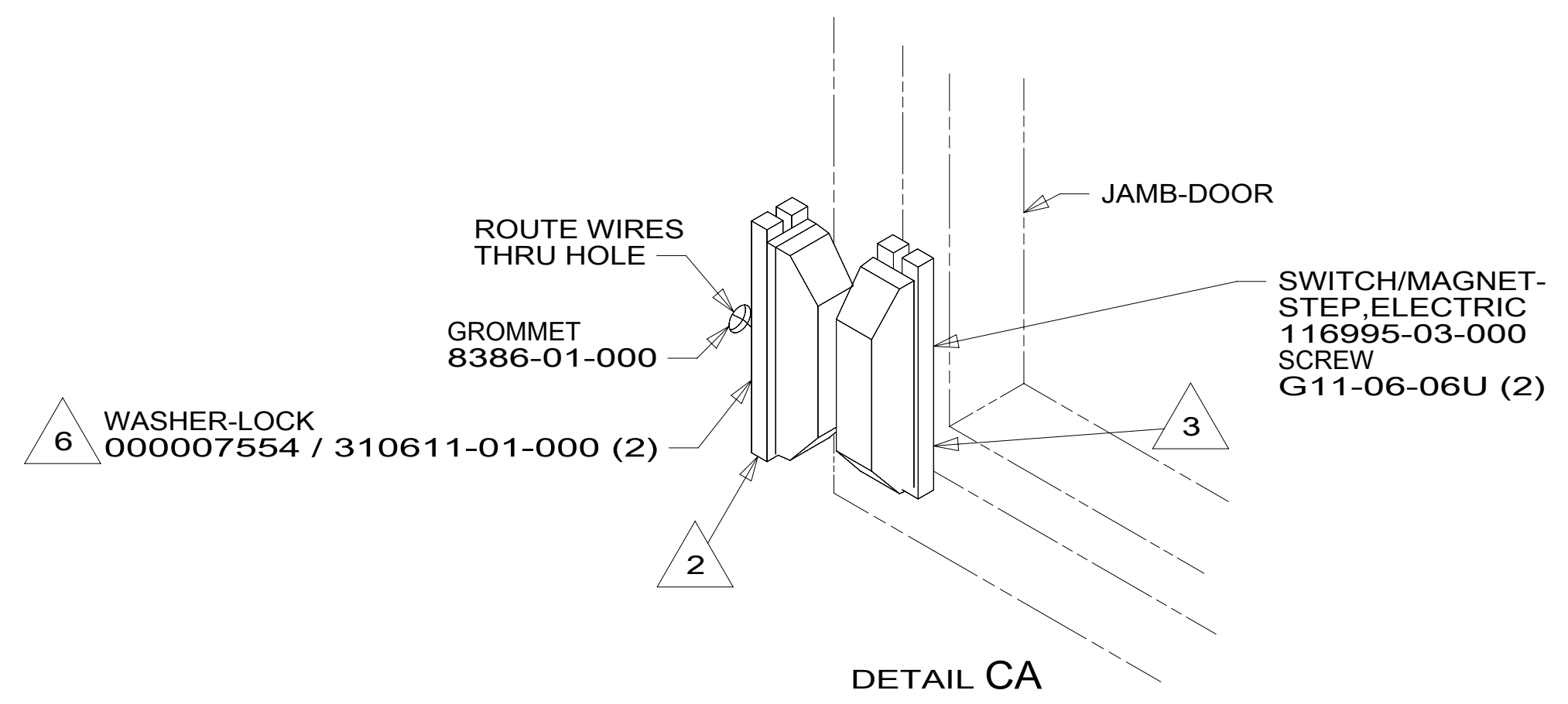
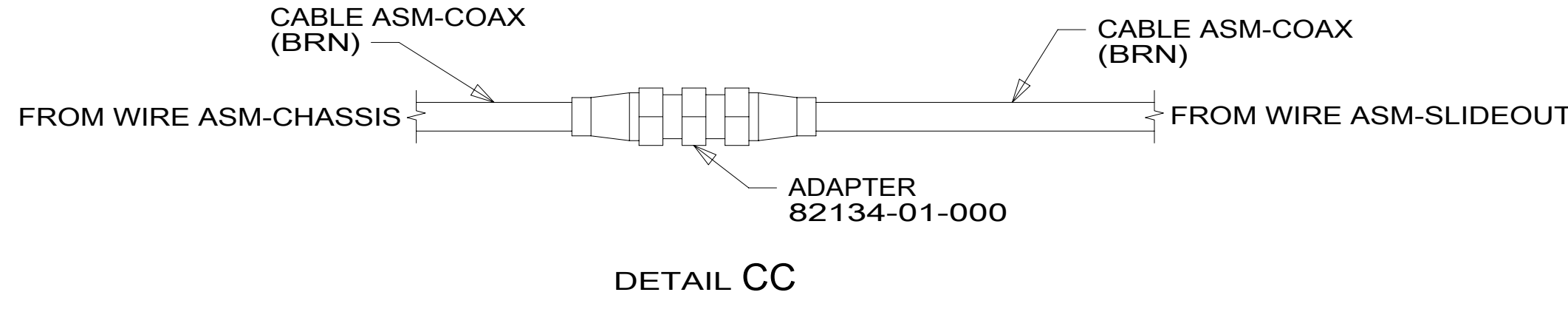
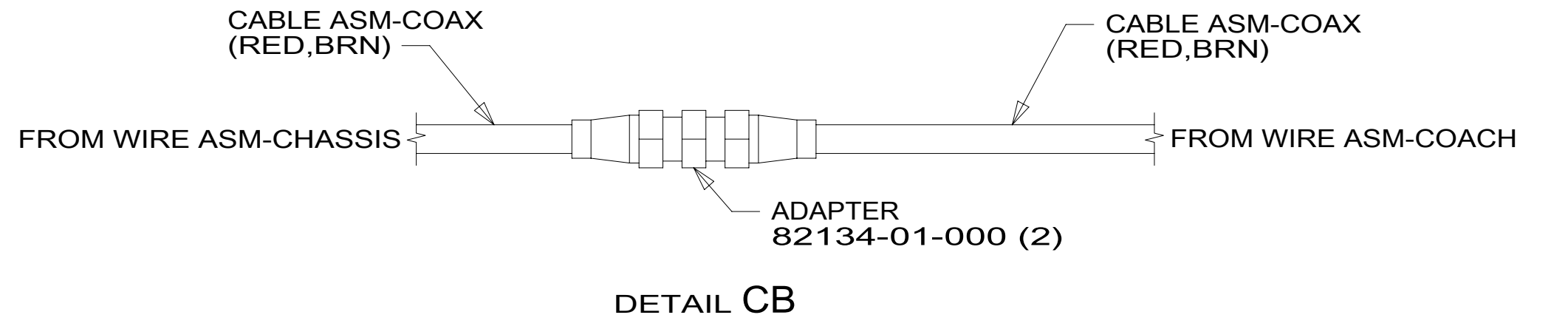
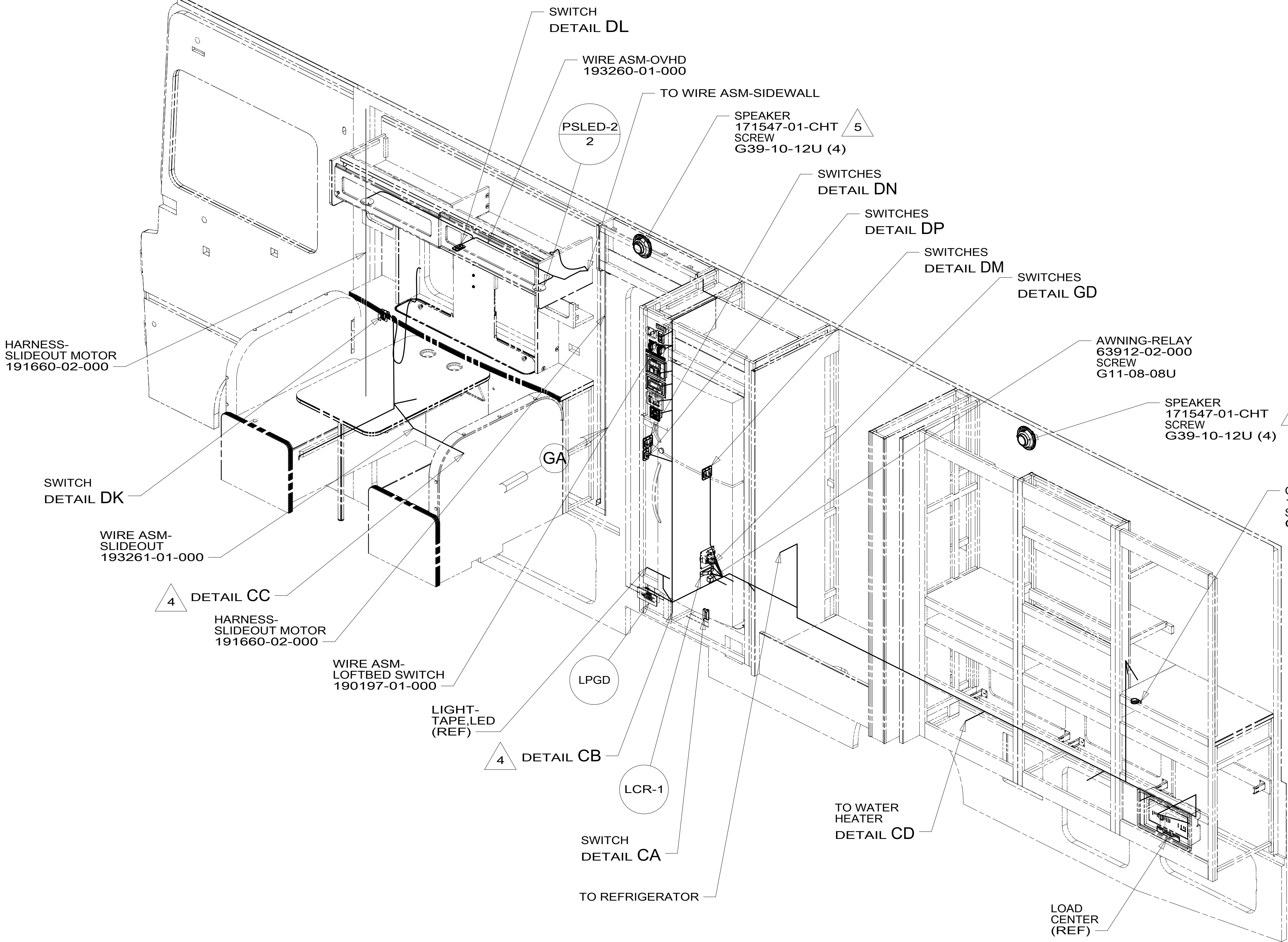
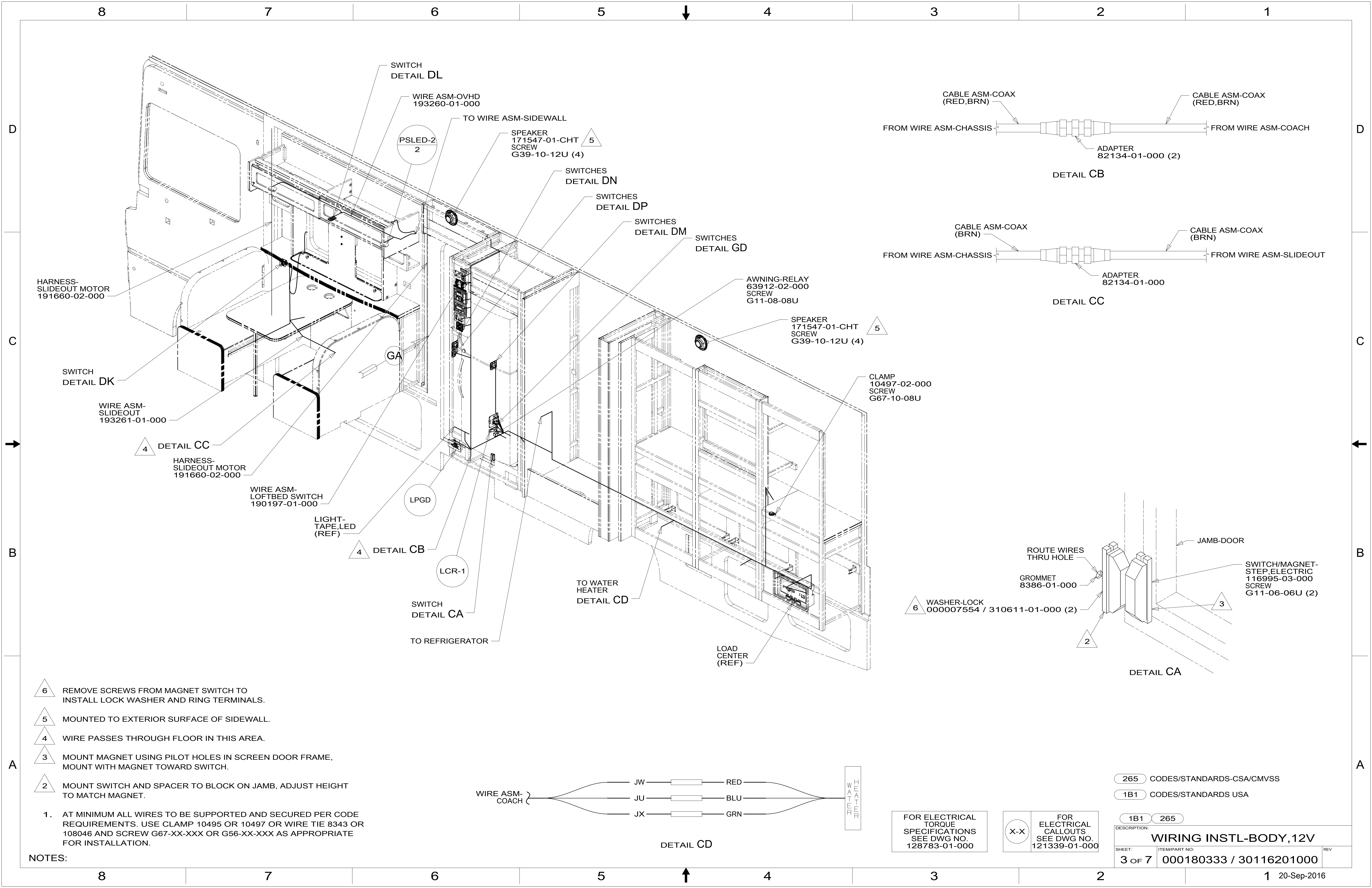
- 144 REFRIGERATOR-DOUBLE DOOR
- 15L RESIDENTIAL REFRIGERATOR PKG
- 32W GENERATOR-START,AUTO SYSTEM
- 23T DRAINAGE SYSTEM-HEATED
- 23R DRAINAGE SYSTEM/HEAT-PREWIRE
- 265 CODES/STANDARDS-CSA/CMVSS
- 1B1 CODES/STANDARDS USA

DESCRIPTION: 1B1 265

WIRING INSTL-BODY, 12V

SHEET: 2 OF 7 ITEM/PART NO: 000180333 / 30116201000 REV

1 20-Sep-2016



- NOTES:
- 6 REMOVE SCREWS FROM MAGNET SWITCH TO INSTALL LOCK WASHER AND RING TERMINALS.
 - 5 MOUNTED TO EXTERIOR SURFACE OF SIDEWALL.
 - 4 WIRE PASSES THROUGH FLOOR IN THIS AREA.
 - 3 MOUNT MAGNET USING PILOT HOLES IN SCREEN DOOR FRAME, MOUNT WITH MAGNET TOWARD SWITCH.
 - 2 MOUNT SWITCH AND SPACER TO BLOCK ON JAMB, ADJUST HEIGHT TO MATCH MAGNET.
 - 1. AT MINIMUM ALL WIRES TO BE SUPPORTED AND SECURED PER CODE REQUIREMENTS. USE CLAMP 10495 OR 10497 OR WIRE TIE 8343 OR 108046 AND SCREW G67-XX-XXX OR G56-XX-XXX AS APPROPRIATE FOR INSTALLATION.

FOR ELECTRICAL TORQUE SPECIFICATIONS SEE DWG NO. 128783-01-000

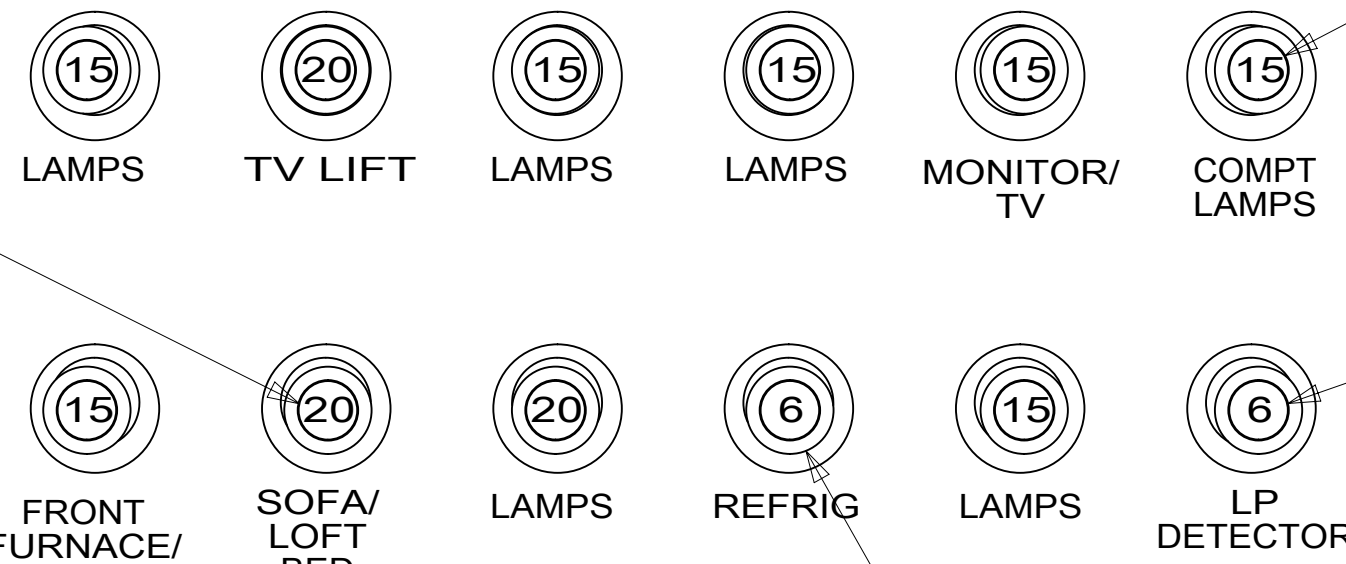
FOR ELECTRICAL CALLOUTS SEE DWG NO. 121339-01-000

- 265 CODES/STANDARDS-CSA/CMVSS
- 1B1 CODES/STANDARDS USA

DESCRIPTION:		1B1 265	
WIRING INSTL-BODY, 12V			
SHEET:	ITEM/PART NO.:	REV:	
3 OF 7	000180333 / 30116201000		

HOUSE 12V CIRCUIT BREAKERS

(PUSH TO RESET)



CIRCUIT BREAKER 093654-03-000 (3)

LABEL 92547-17-000

CIRCUIT BREAKER 93654-02-000 (7)

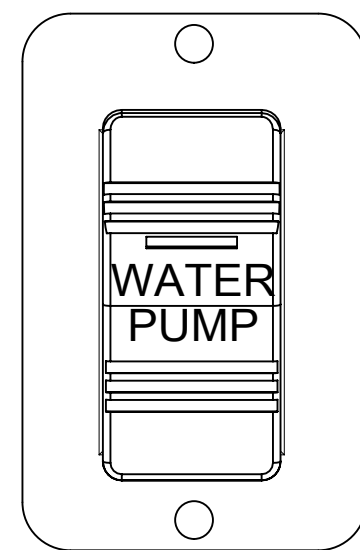
CIRCUIT BREAKER 93654-01-000

DETAIL DA (FRONT VIEW)

CIRCUIT BREAKER 093654-01-000 PLUG 081211-06-000

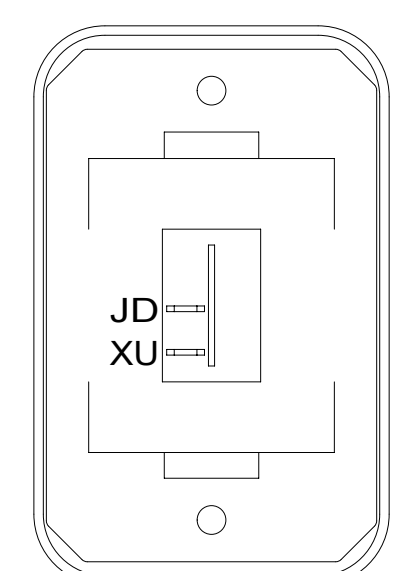
144

15L



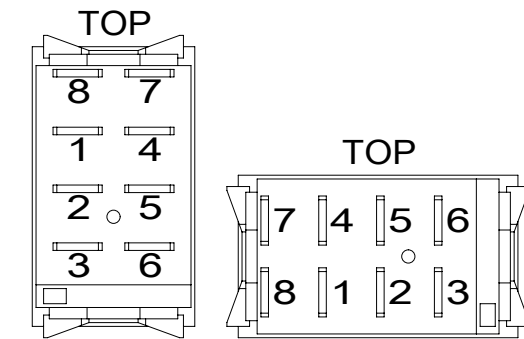
DETAIL DE

SWITCH-PUMP 108357-21-000 ACTUATOR 108356-23-CHT PLATE 144363-02-CHT SCREW G11-06-10U (2)

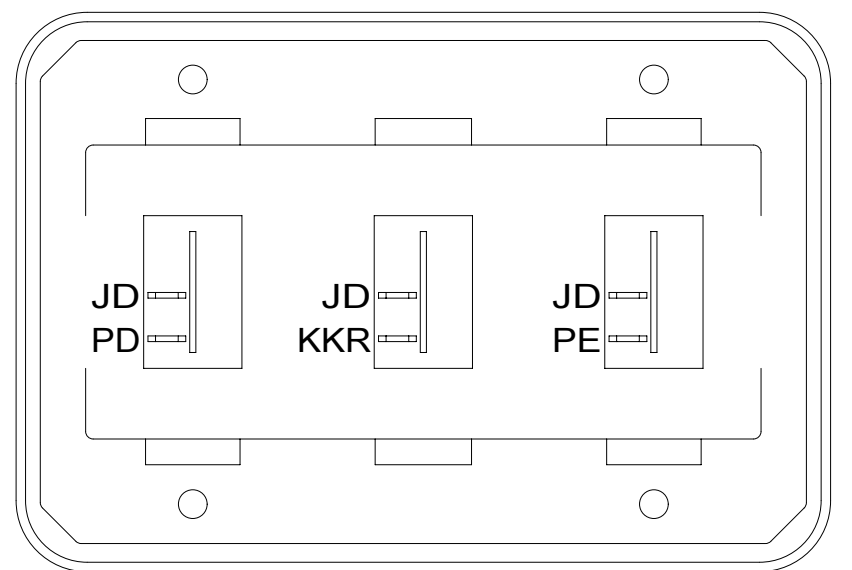


DETAIL DL

SWITCH-ROCKER 135740-01-CHT SWITCH-BASE 135741-01-CHT SWITCH-BEZEL 135742-01-CHT SCREW G11-08-08U (2)

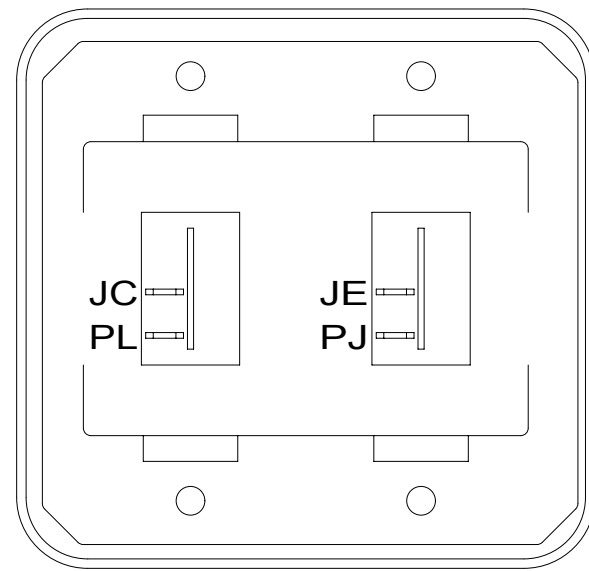


DETAIL DR



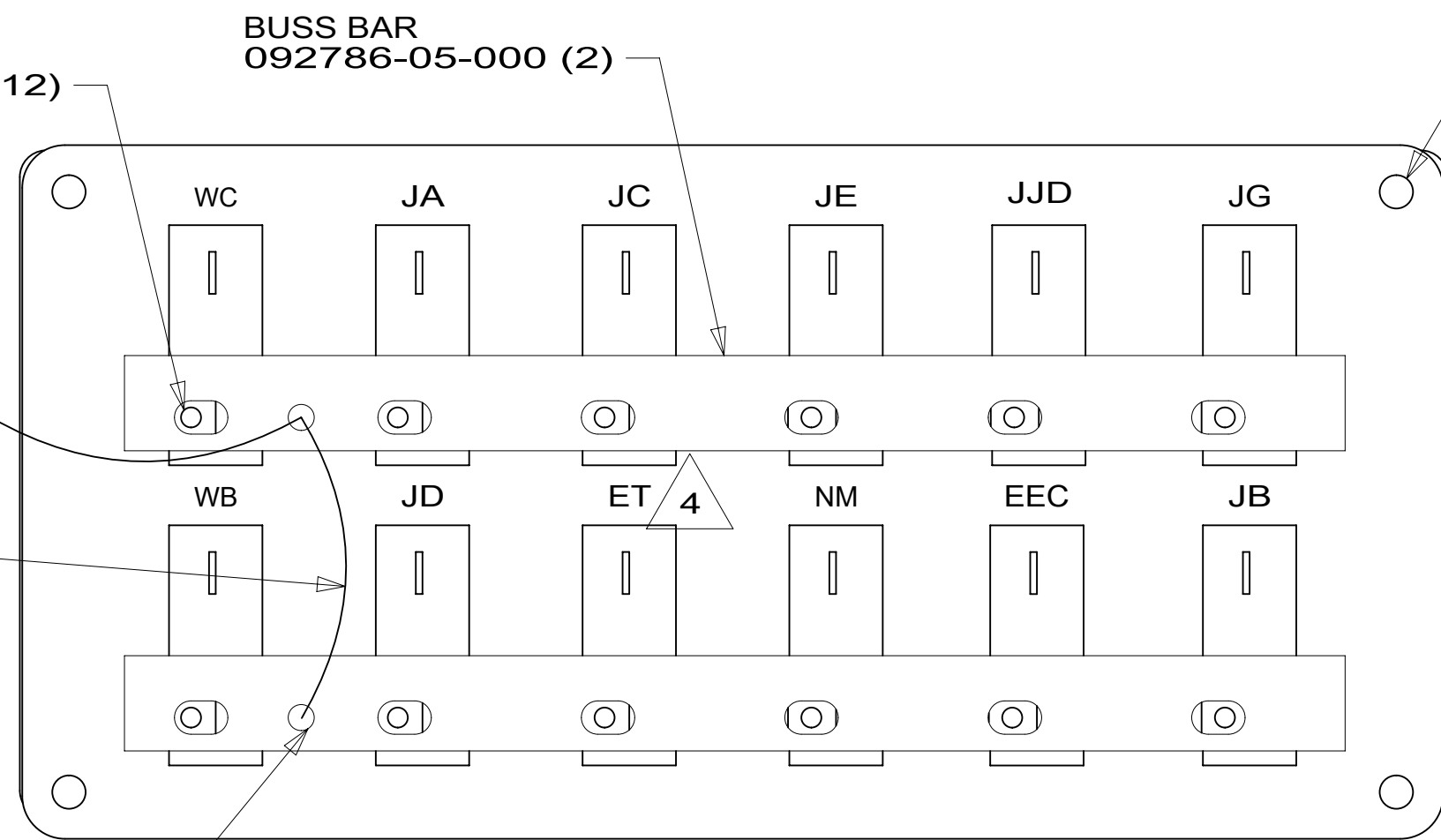
DETAIL DF

SWITCH-ROCKER 135740-01-CHT (3) SWITCH-BASE 135741-03-CHT SWITCH-BEZEL 135742-03-CHT SCREW G11-08-08U (4)



DETAIL DM

SWITCH-ROCKER 135740-01-CHT (2) SWITCH-BASE 135741-02-CHT SWITCH-BEZEL 135742-02-CHT SCREW G11-08-08U (4)



DETAIL DA (BACK VIEW)

SCREW G52-06-04U (12)

BUSS BAR 092786-05-000 (2)

SCREW G11-10-12U (4)

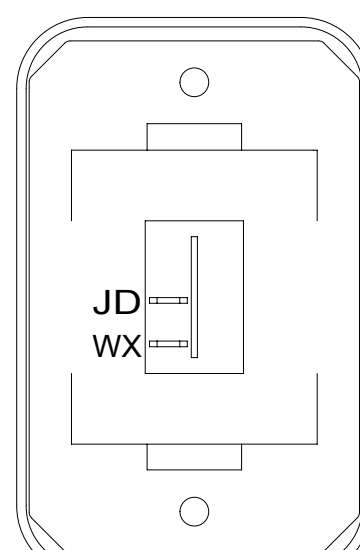
J 2 6 BLK

1M 3 8 BLK

DS

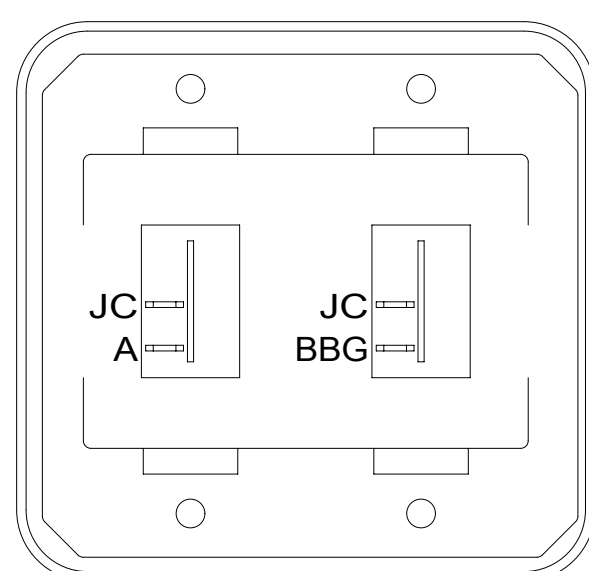
DS

PLATE 139067-02-CHT



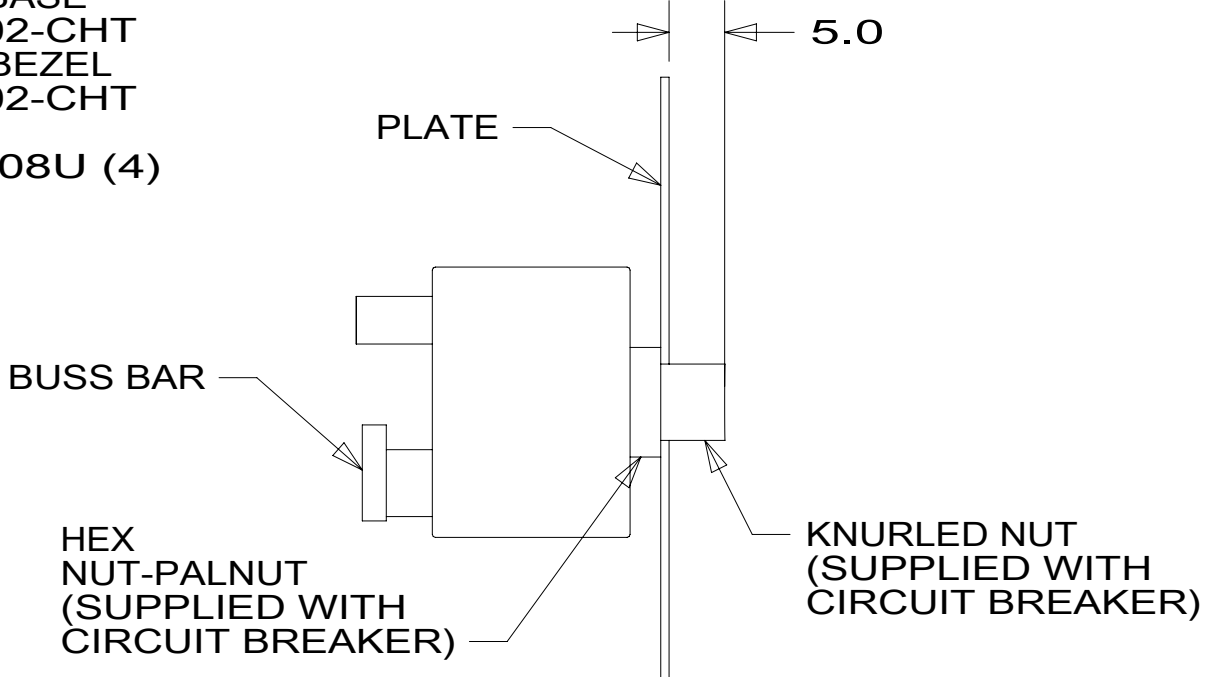
DETAIL DG

SWITCH-ROCKER 135740-01-CHT SWITCH-BASE 135741-01-CHT SWITCH-BEZEL 135742-01-CHT SCREW G11-08-08U (2)

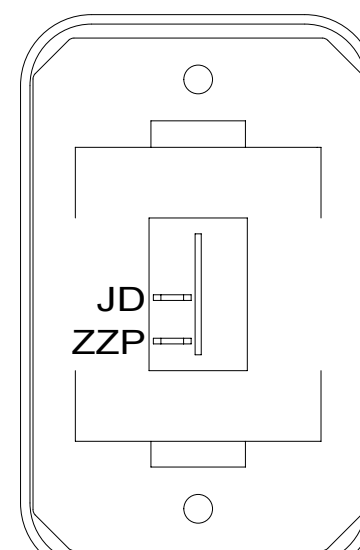


DETAIL DN

SWITCH-ROCKER 135740-01-CHT (2) SWITCH-BASE 135741-02-CHT SWITCH-BEZEL 135742-02-CHT SCREW G11-08-08U (4)

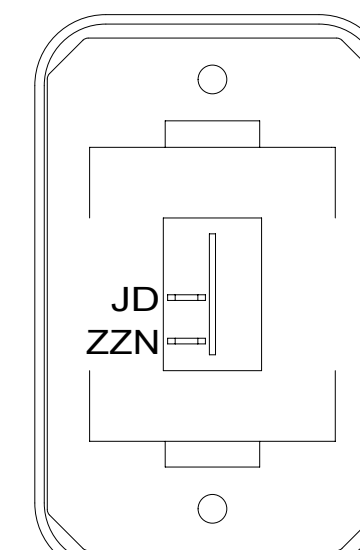


DETAIL DS



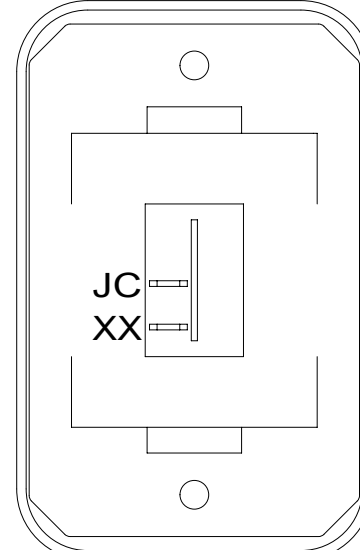
DETAIL DB

SWITCH-ROCKER 135740-01-CHT SWITCH-BASE 135741-01-CHT SWITCH-BEZEL 135742-01-CHT SCREW G11-08-08U (2)



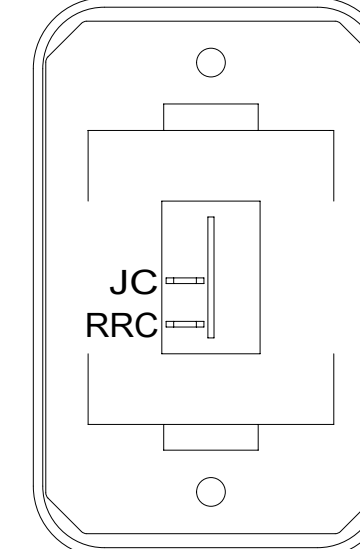
DETAIL DC

SWITCH-ROCKER 135740-01-CHT SWITCH-BASE 135741-01-CHT SWITCH-BEZEL 135742-01-CHT SCREW G11-08-08U (2)



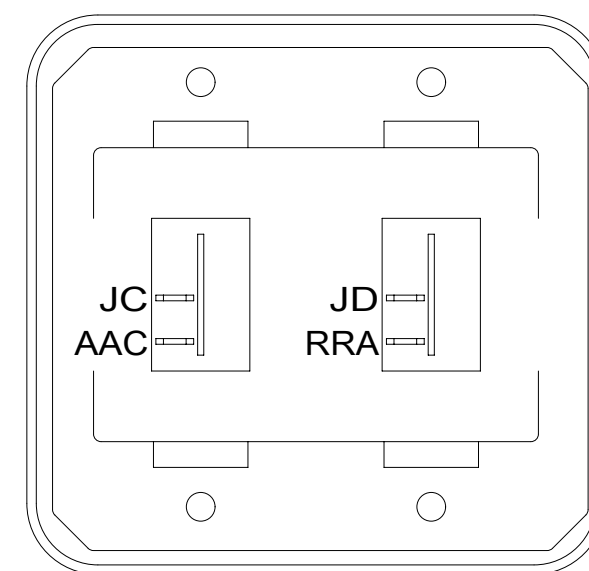
DETAIL DH

SWITCH-ROCKER 135740-01-CHT SWITCH-BASE 135741-01-CHT SWITCH-BEZEL 135742-01-CHT SCREW G11-08-08U (2)



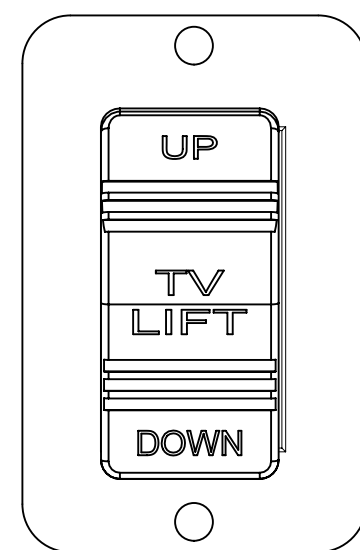
DETAIL DP

SWITCH-ROCKER 135740-01-CHT SWITCH-BASE 135741-01-CHT SWITCH-BEZEL 135742-01-CHT SCREW G11-08-08U (2)



DETAIL DJ

SWITCH-ROCKER 135740-01-CHT (2) SWITCH-BASE 135741-02-CHT SWITCH-BEZEL 135742-02-CHT SCREW G11-08-08U (4)



DETAIL DK

SWITCH-TV LIFT 108357-06-000 ACTUATOR 108356-26-CHT PLATE 144363-02-CHT SCREW G11-06-10U (2)

FOR ELECTRICAL TORQUE SPECIFICATIONS SEE DWG NO. 128783-01-000

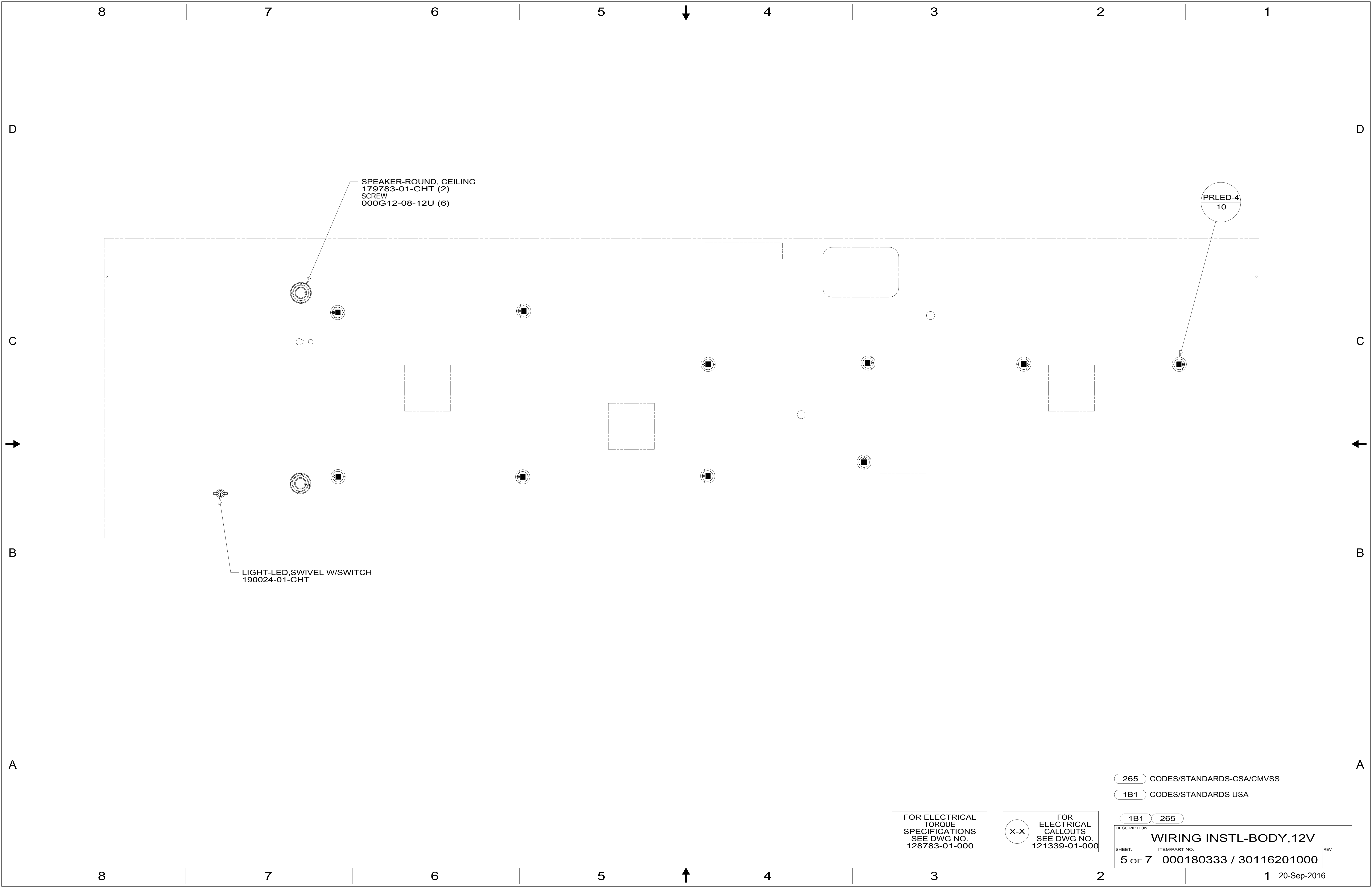
FOR ELECTRICAL CALLOUTS SEE DWG NO. 121339-01-000

- 15L RESIDENTIAL REFRIGERATOR PKG
- 144 REFRIGERATOR-DOUBLE DOOR
- 265 CODES/STANDARDS-CSA/CMVSS
- 1B1 CODES/STANDARDS USA

- 4 BREAKER NOT USED WITH 15L
- 3 CIRCUIT FROM WIRE ASM-LEFT
- 2 CIRCUIT FROM WIRE ASM-CHASSIS

NOTES: 1. FOR SWITCH ORIENTATION SEE DETAIL DR

DESCRIPTION: WIRING INSTL-BODY, 12V		
SHEET: 4 OF 7	ITEM/PART NO: 000180333 / 30116201000	REV:



SPEAKER-ROUND, CEILING
 179783-01-CHT (2)
 SCREW
 000G12-08-12U (6)

LIGHT-LED, SWIVEL W/SWITCH
 190024-01-CHT

PRLED-4
 10

FOR ELECTRICAL
 TORQUE
 SPECIFICATIONS
 SEE DWG NO.
 128783-01-000

FOR
 ELECTRICAL
 CALLOUTS
 SEE DWG NO.
 121339-01-000

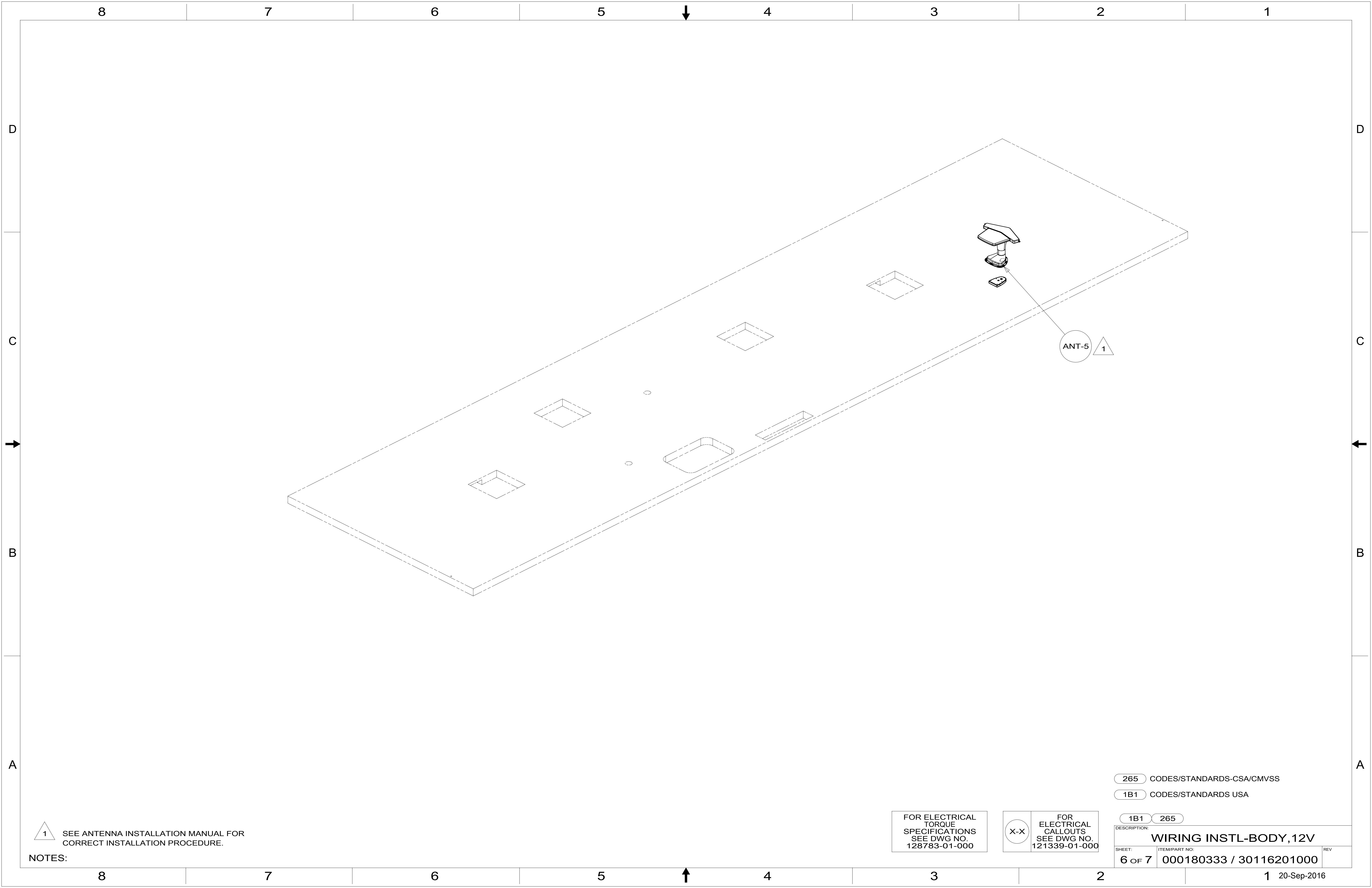
265 CODES/STANDARDS-CSA/CMVSS

1B1 CODES/STANDARDS USA

1B1 265

DESCRIPTION:
WIRING INSTL-BODY, 12V

SHEET: 5 OF 7 ITEM/PART NO: 000180333 / 30116201000 REV



1 SEE ANTENNA INSTALLATION MANUAL FOR CORRECT INSTALLATION PROCEDURE.

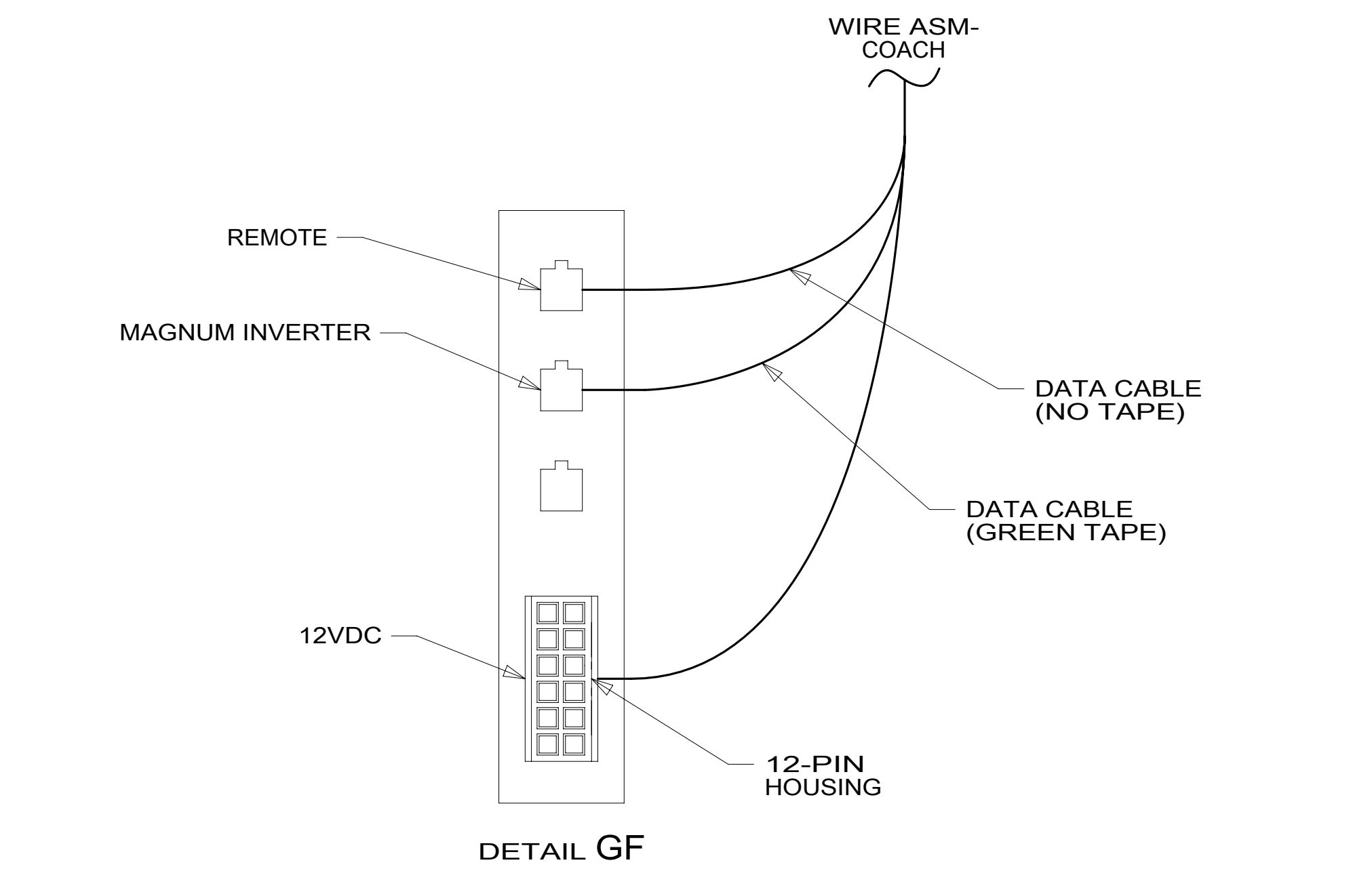
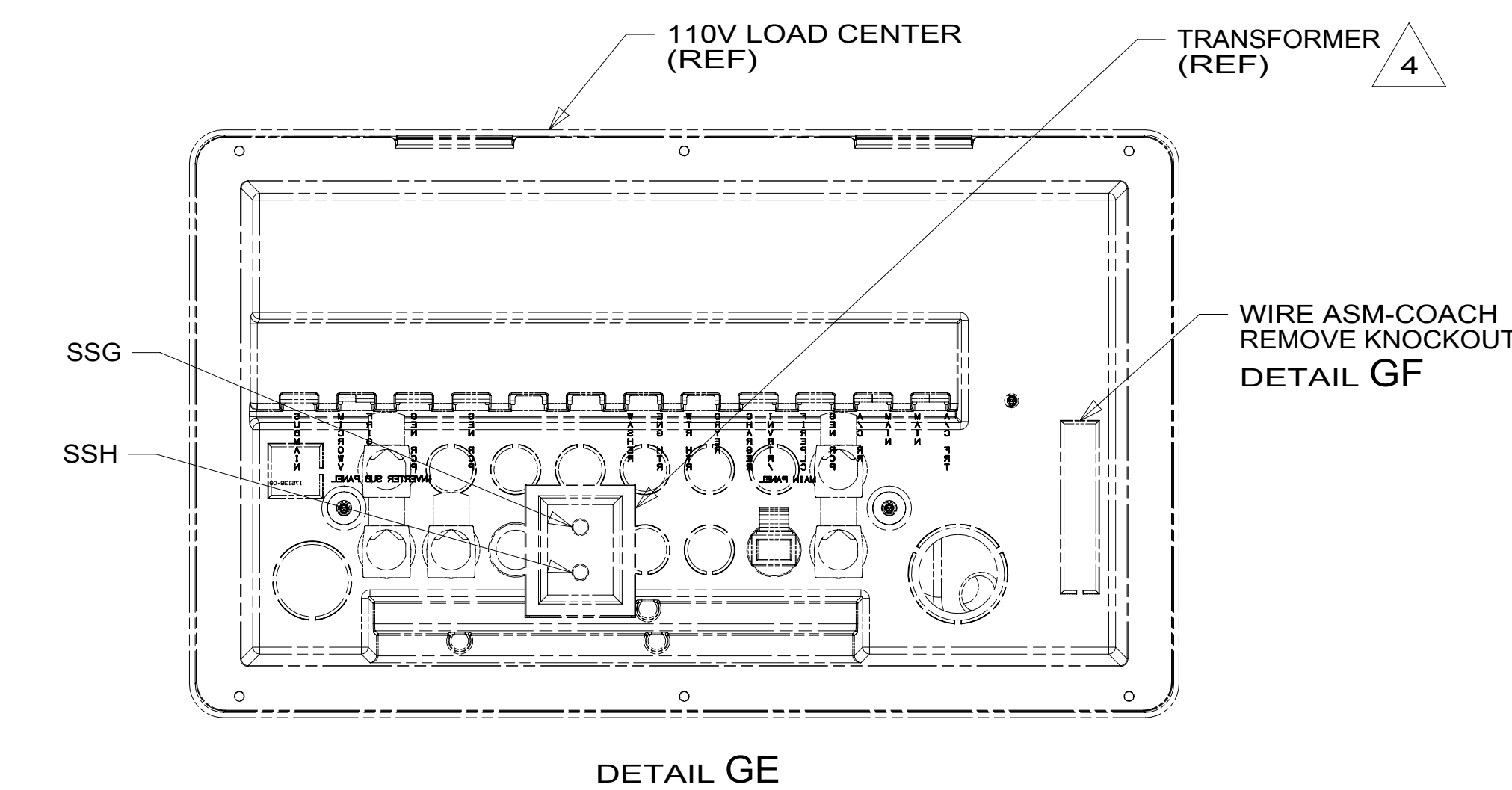
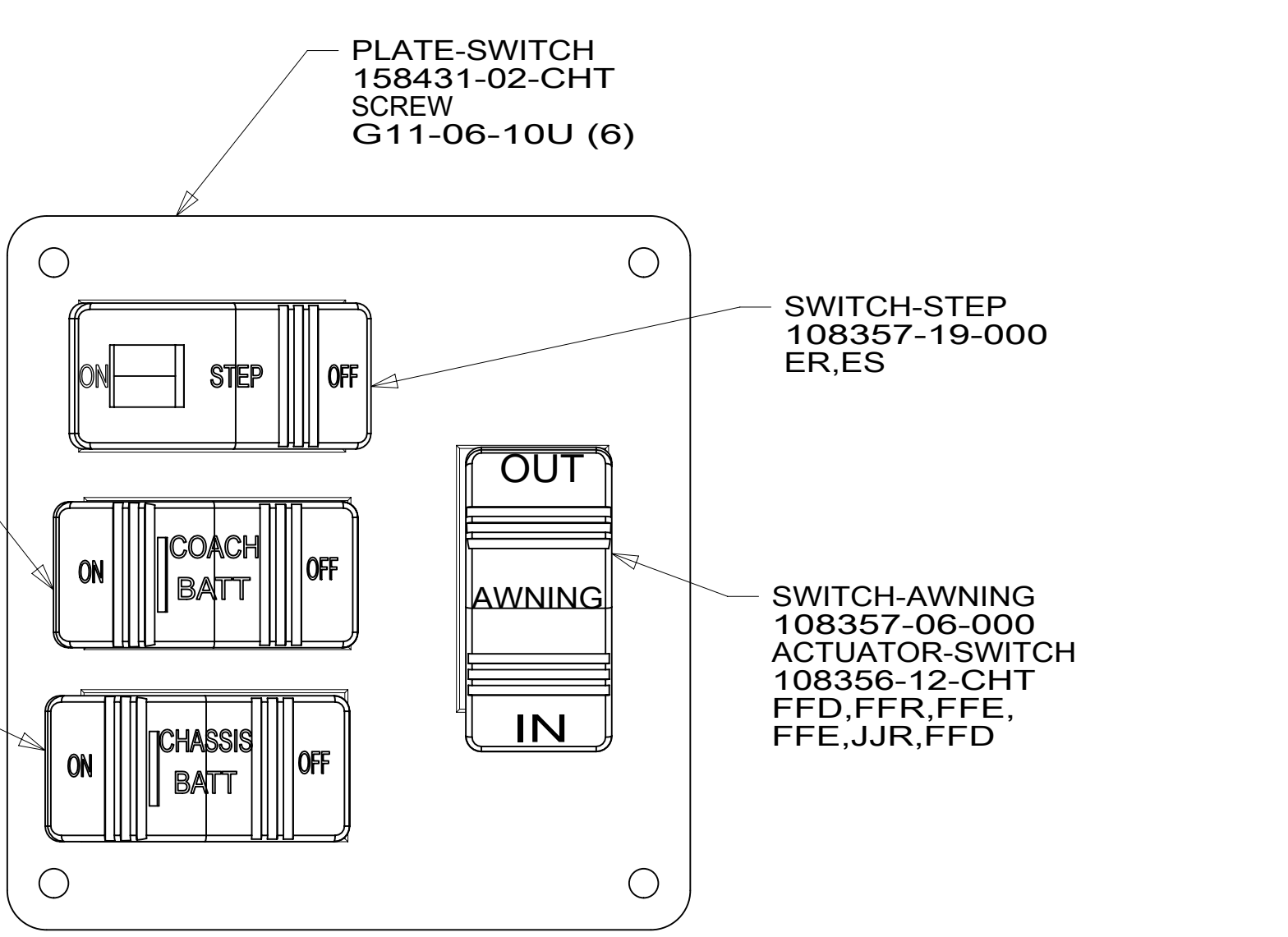
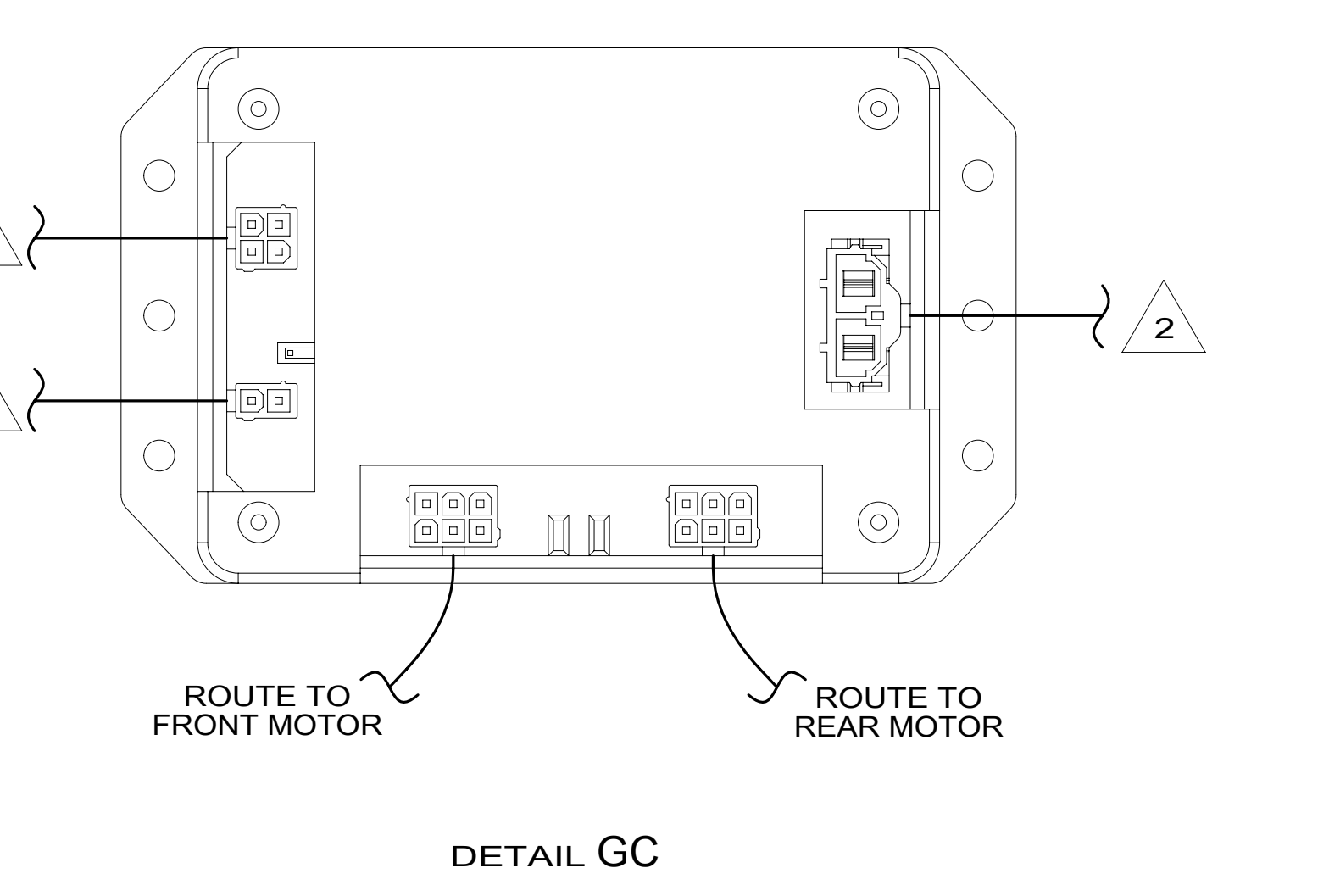
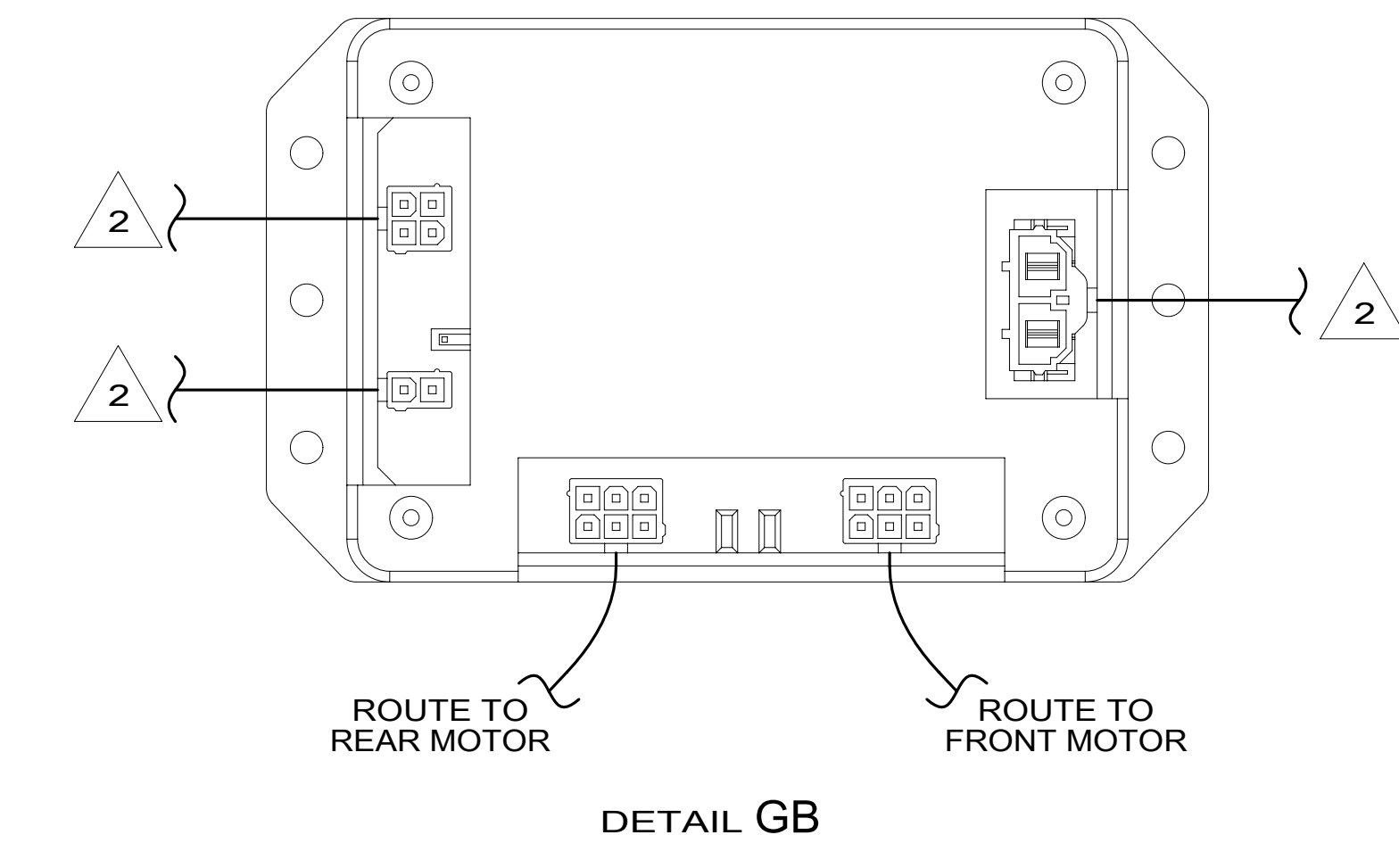
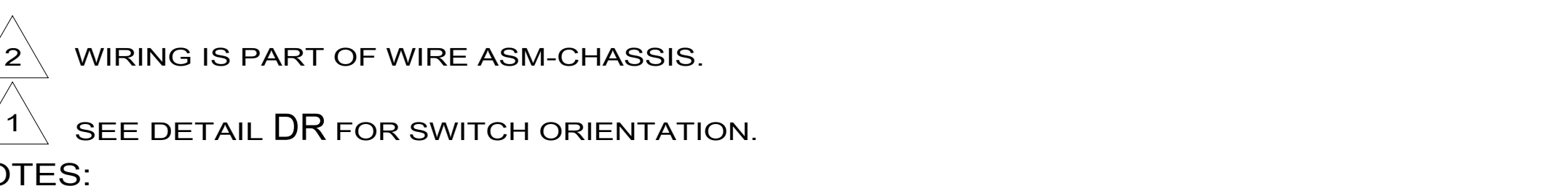
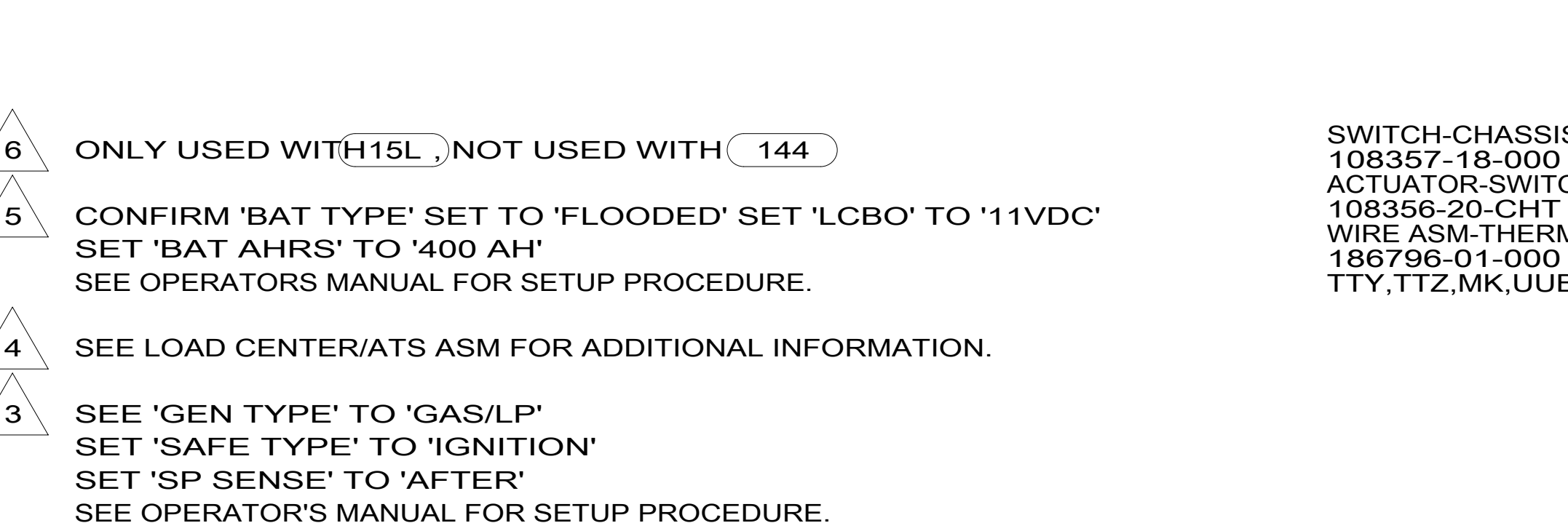
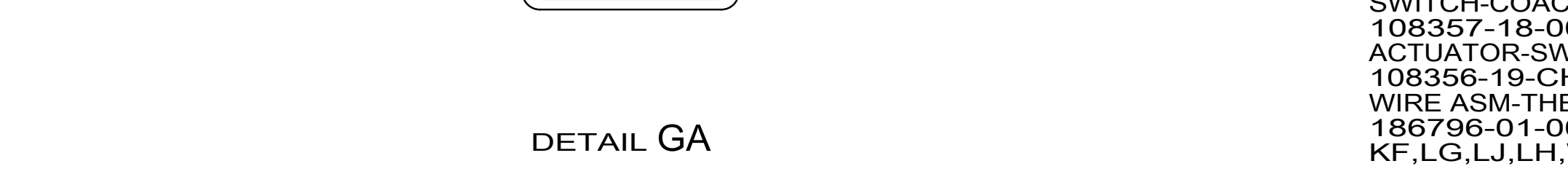
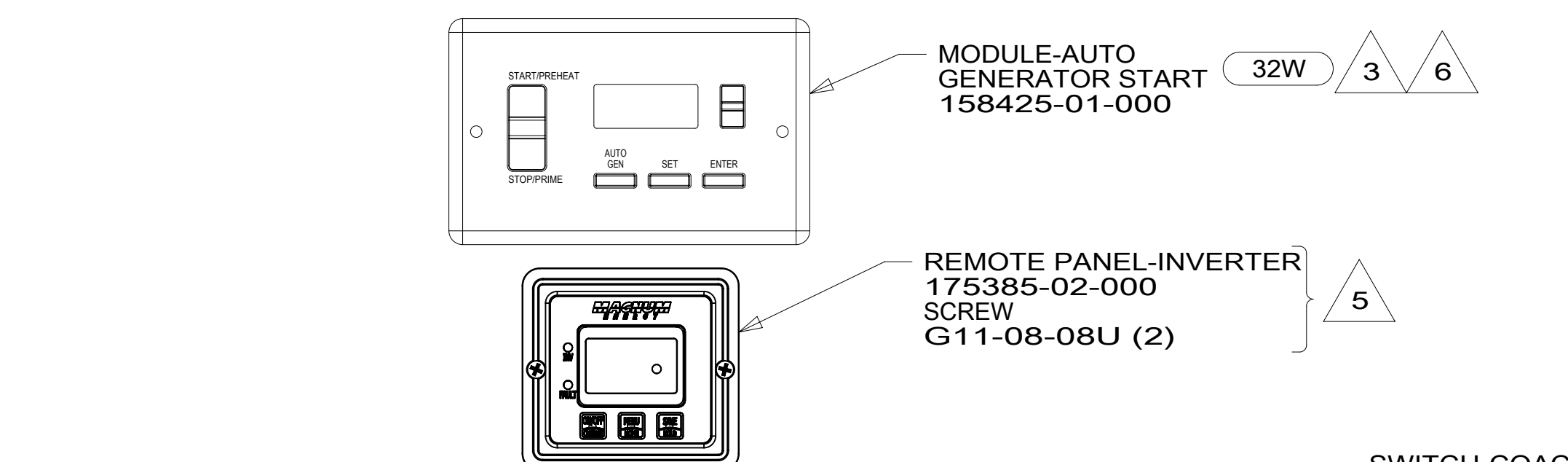
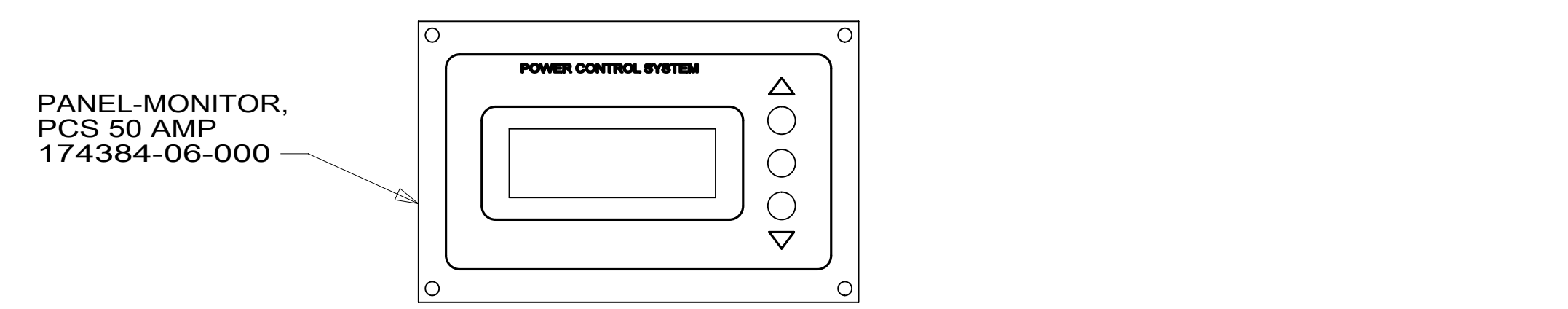
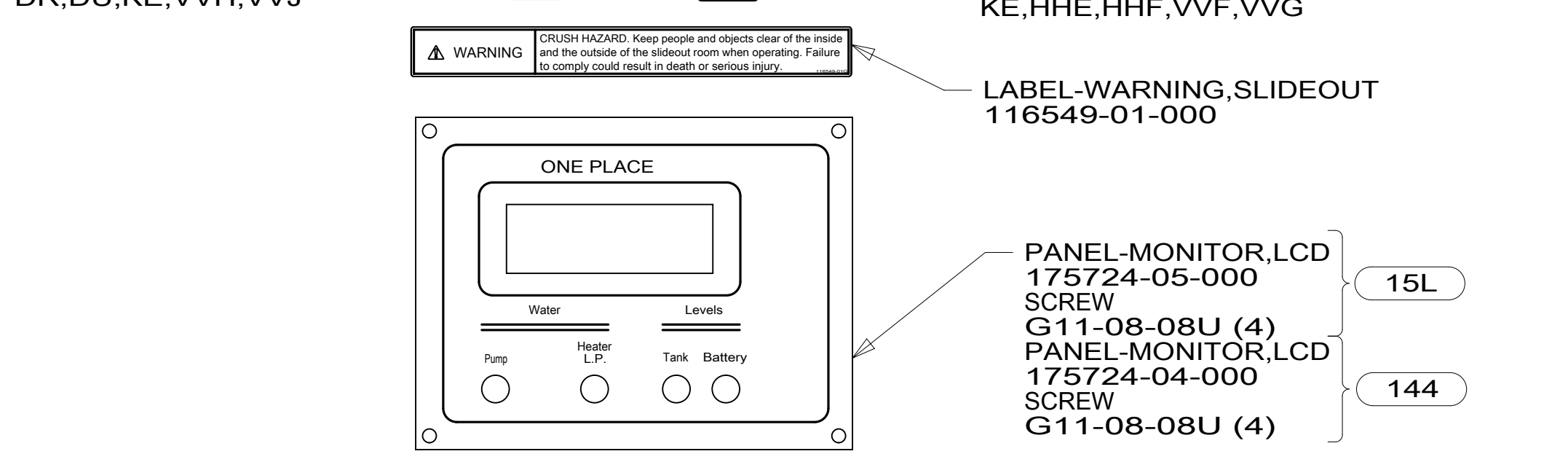
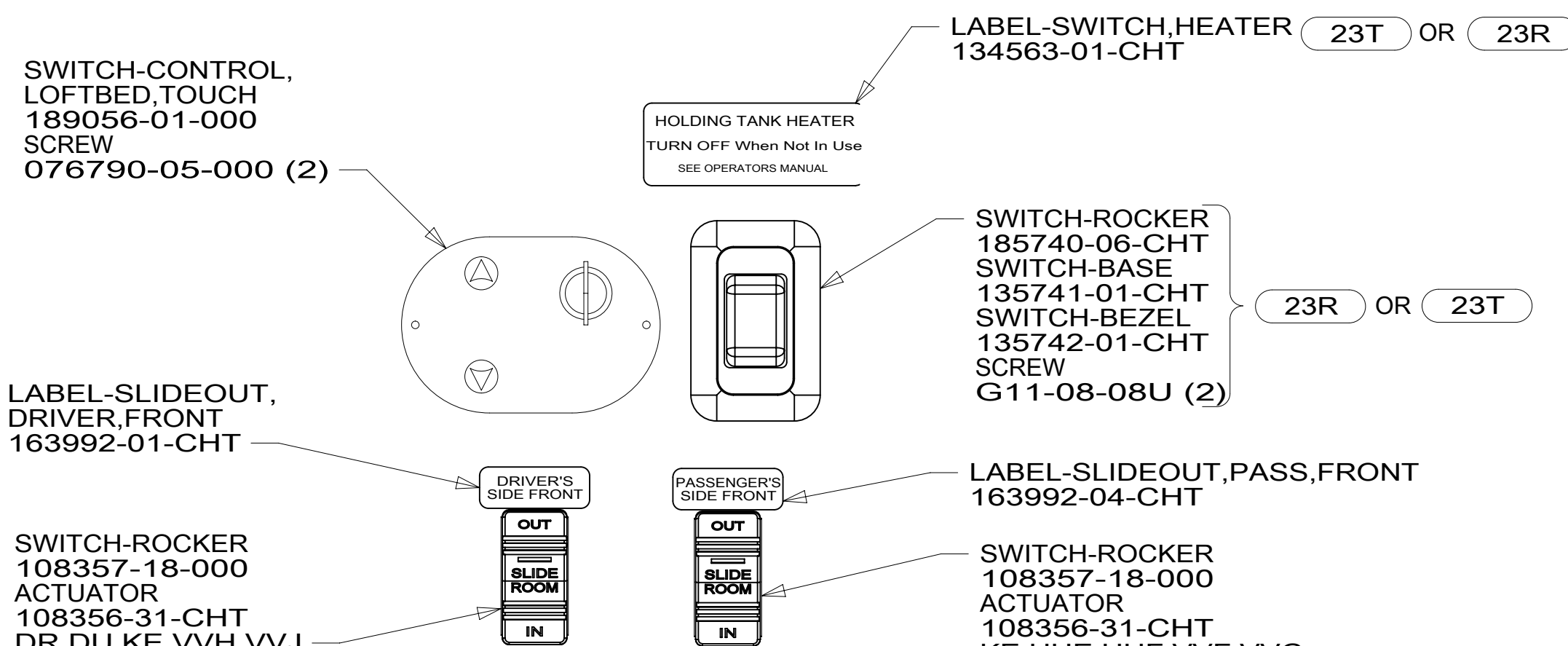
NOTES:

FOR ELECTRICAL TORQUE SPECIFICATIONS SEE DWG NO. 128783-01-000

FOR ELECTRICAL CALLOUTS SEE DWG NO. 121339-01-000

265 CODES/STANDARDS-CSA/CMVSS
 1B1 CODES/STANDARDS USA

1B1	265
DESCRIPTION: WIRING INSTL-BODY, 12V	
SHEET: 6 OF 7	ITEM/PART NO: 000180333 / 30116201000
REV	



- 6 ONLY USED WITH 15L, NOT USED WITH 144
- 5 CONFIRM 'BAT TYPE' SET TO 'FLOODED' SET 'LCBO' TO '11VDC' SET 'BAT AHRS' TO '400 AH' SEE OPERATORS MANUAL FOR SETUP PROCEDURE.
- 4 SEE LOAD CENTER/ATS ASM FOR ADDITIONAL INFORMATION.
- 3 SEE 'GEN TYPE' TO 'GAS/LP' SET 'SAFE TYPE' TO 'IGNITION' SET 'SP SENSE' TO 'AFTER' SEE OPERATOR'S MANUAL FOR SETUP PROCEDURE.
- 2 WIRING IS PART OF WIRE ASM-CHASSIS.
- 1 SEE DETAIL DR FOR SWITCH ORIENTATION.
- NOTES:

- 15L RESIDENTIAL REFRIGERATOR PKG
- 144 REFRIGERATOR-DOUBLE DOOR
- 23R DRAINAGE SYSTEM/HEAT-PREWIRE
- 23T DRAINAGE SYSTEM-HEATED
- 32W GENERATOR-START,AUTO SYSTEM
- 265 CODES/STANDARDS-CSA/CMVSS
- 1B1 CODES/STANDARDS USA

FOR ELECTRICAL TORQUE SPECIFICATIONS SEE DWG NO. 128783-01-000

FOR ELECTRICAL CALLOUTS SEE DWG NO. 121339-01-000

1B1 265

DESCRIPTION: WIRING INSTL-BODY, 12V

SHEET: 7 OF 7

ITEM/PART NO.: 000180333 / 30116201000

REV