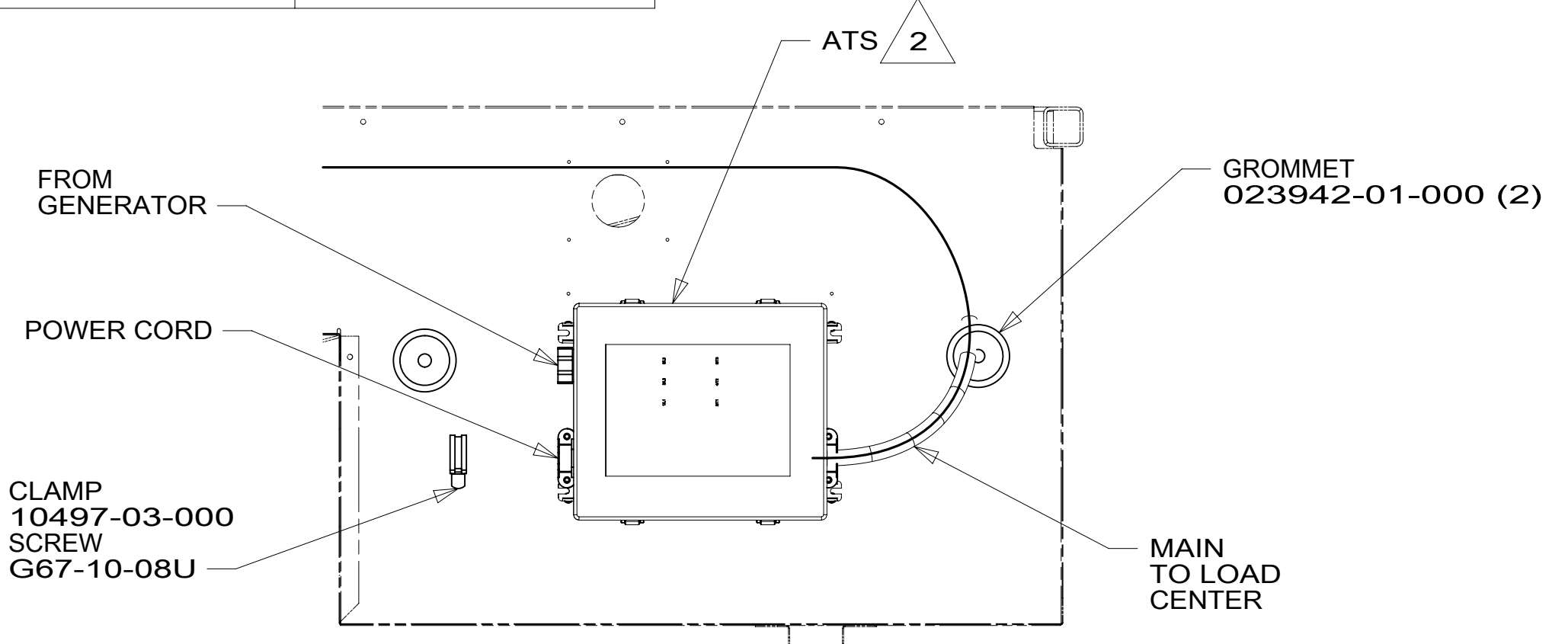
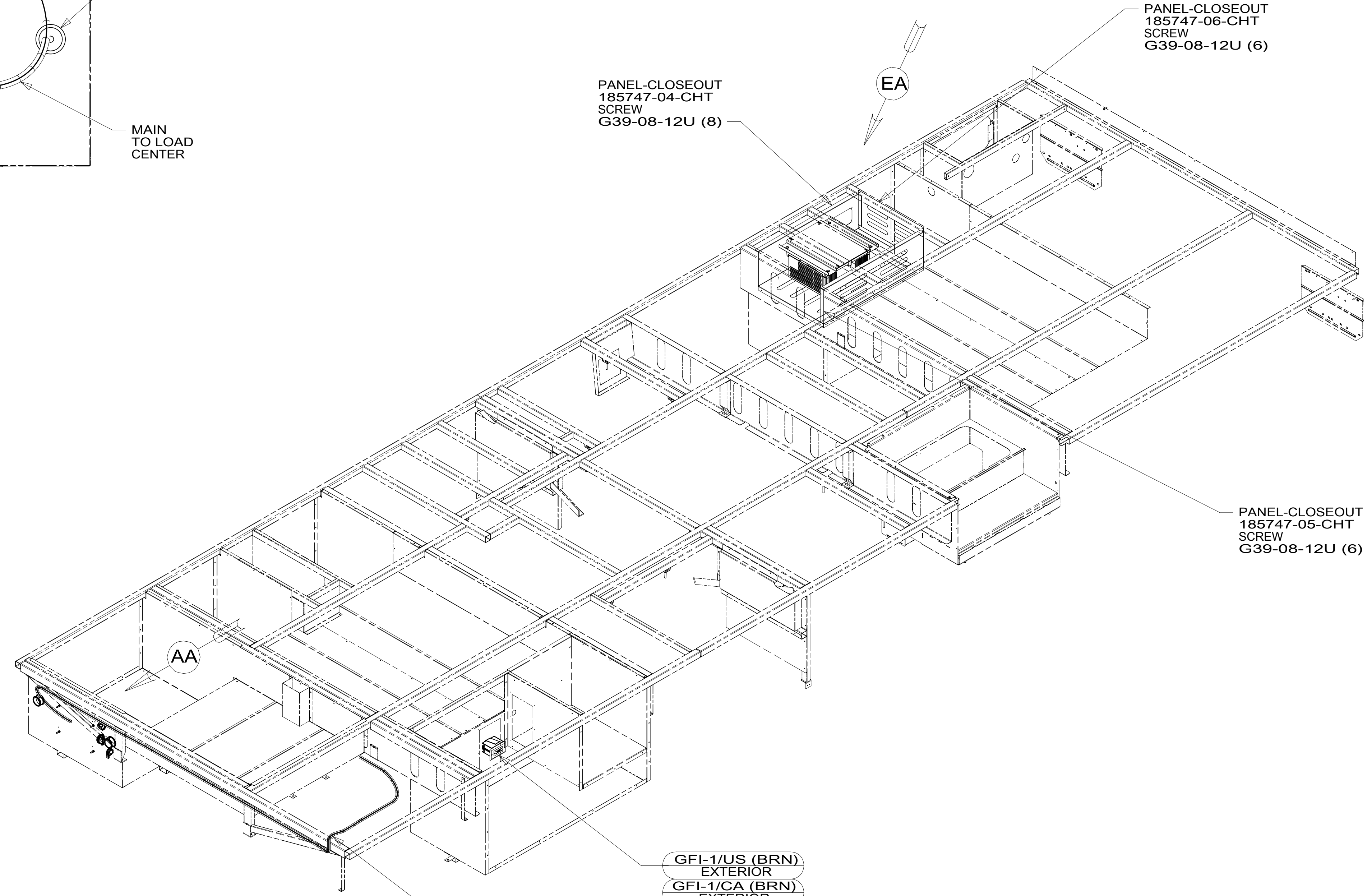


DRAWING NO.	FEATURE
301161-12	1B1 78J
301161-16	265 78J



VIEW AA



4. AT MINIMUM ALL WIRES TO BE SUPPORTED AND SECURED PER CODE REQUIREMENTS. USE CLAMP 10495 OR 10497 OR WIRE TIE 8343 OR 108046 AND SCREW G67-XX-XXX OR G56-XX-XXX AS APPROPRIATE FOR INSTALLATION.

3 WIRE ROUTED THROUGH FLOOR IN THIS AREA.  
 2 SEE LOAD CENTER/ATS ASM FOR ADDITIONAL INFORMATION.

1. WIRES ROUTED UNDER FLOOR.

NOTES:

FOR ELECTRICAL TORQUE SPECIFICATIONS SEE DWG NO. 128783-01-000

FOR ELECTRICAL CALLOUTS SEE DWG NO. 121339-01-000

- 78J ELECTRICAL SYSTEM-50 AMP
- 265 CODES/STANDARDS-CSA/CMVSS
- 1B1 CODES/STANDARDS USA

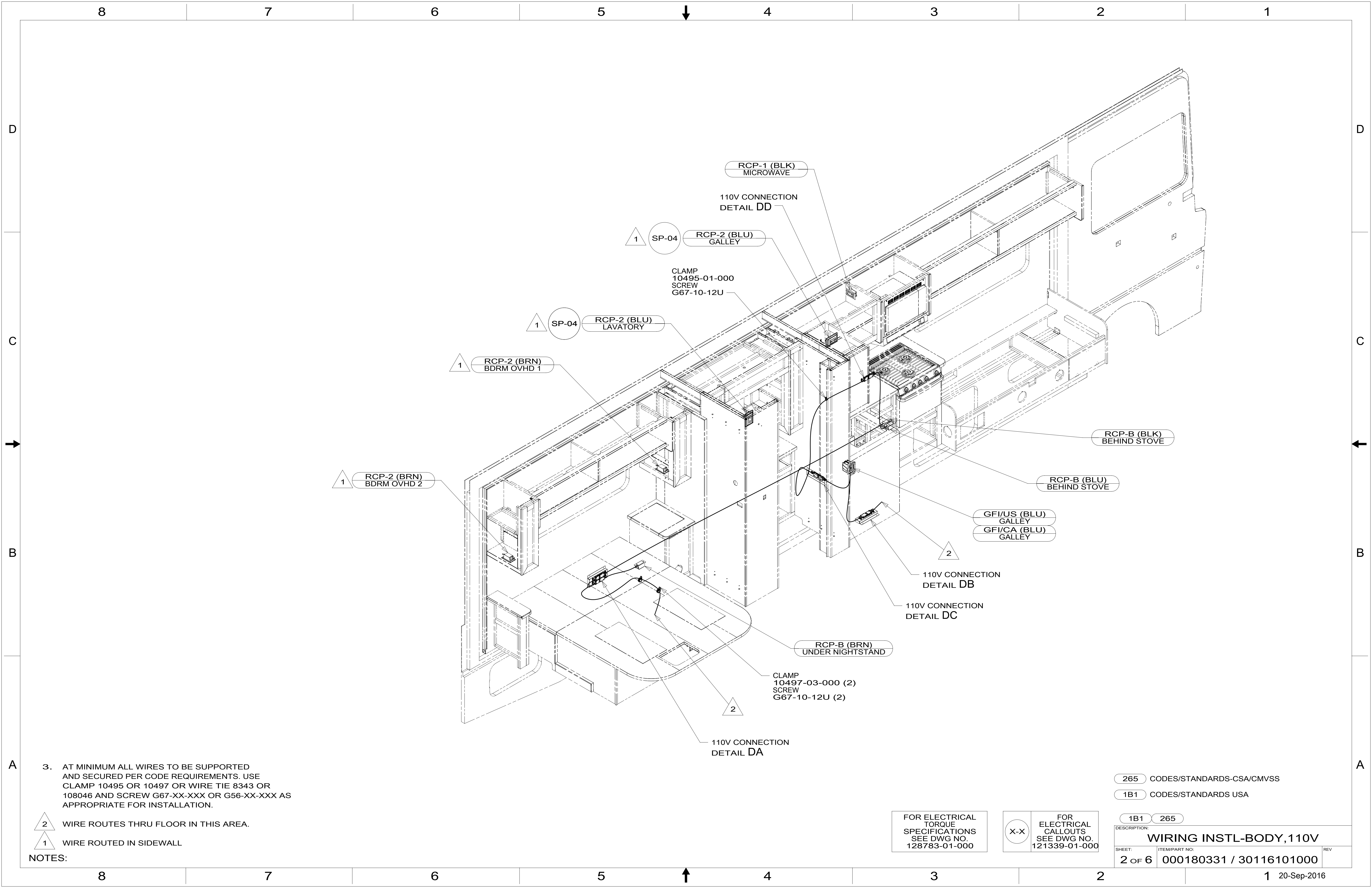
1B1 265



DSNR:	ALL DIMENSIONS ARE IN MILLIMETERS	
DFFR:		
UNSPECIFIED TOLERANCES:	MATERIAL:	
WHOLE DIM (X) :	3	
ONE-PLACE (X.X) :	1.5	
TWO-PLACE (X.XX) :	0.50	
ANGLE :	1°	
REFER TO ES0018 FOR FASTENER TIGHTENING GUIDELINES	WEIGHT: (LBS)	FIRST USED:

**WIRING INSTL-BODY, 110V**

SHEET:	ITEM/PART NO.:	REV:
1 OF 6	000180331 / 30116101000	



3. AT MINIMUM ALL WIRES TO BE SUPPORTED AND SECURED PER CODE REQUIREMENTS. USE CLAMP 10495 OR 10497 OR WIRE TIE 8343 OR 108046 AND SCREW G67-XX-XXX OR G56-XX-XXX AS APPROPRIATE FOR INSTALLATION.

- 2 WIRE ROUTES THRU FLOOR IN THIS AREA.
- 1 WIRE ROUTED IN SIDEWALL

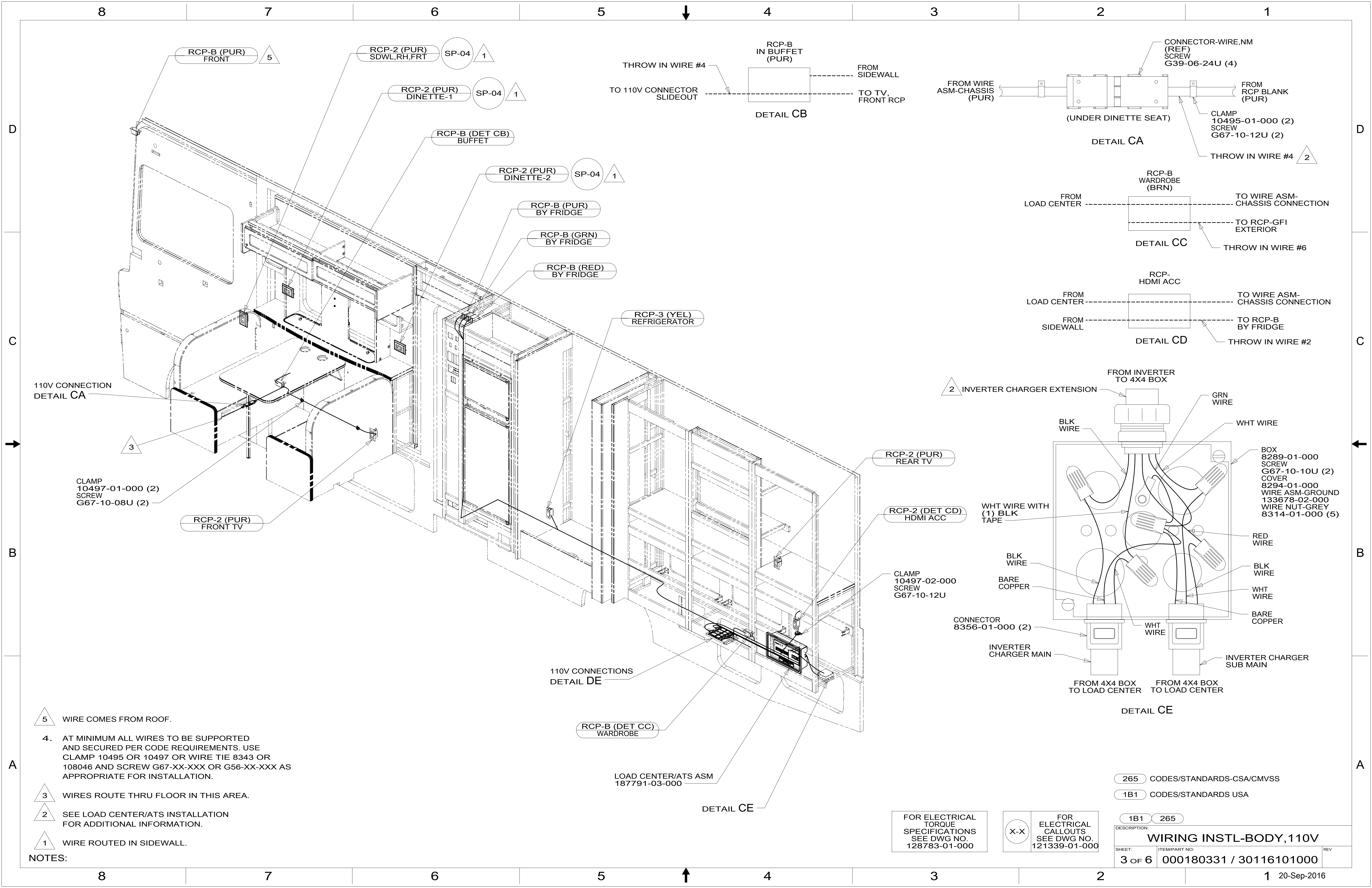
NOTES:

265 CODES/STANDARDS-CSA/CMVSS  
 1B1 CODES/STANDARDS USA

FOR ELECTRICAL TORQUE SPECIFICATIONS SEE DWG NO. 128783-01-000

FOR ELECTRICAL CALLOUTS SEE DWG NO. 121339-01-000

DESCRIPTION:	
<b>WIRING INSTL-BODY, 110V</b>	
SHEET:	ITEM/PART NO.:
2 OF 6	000180331 / 30116101000
REV	



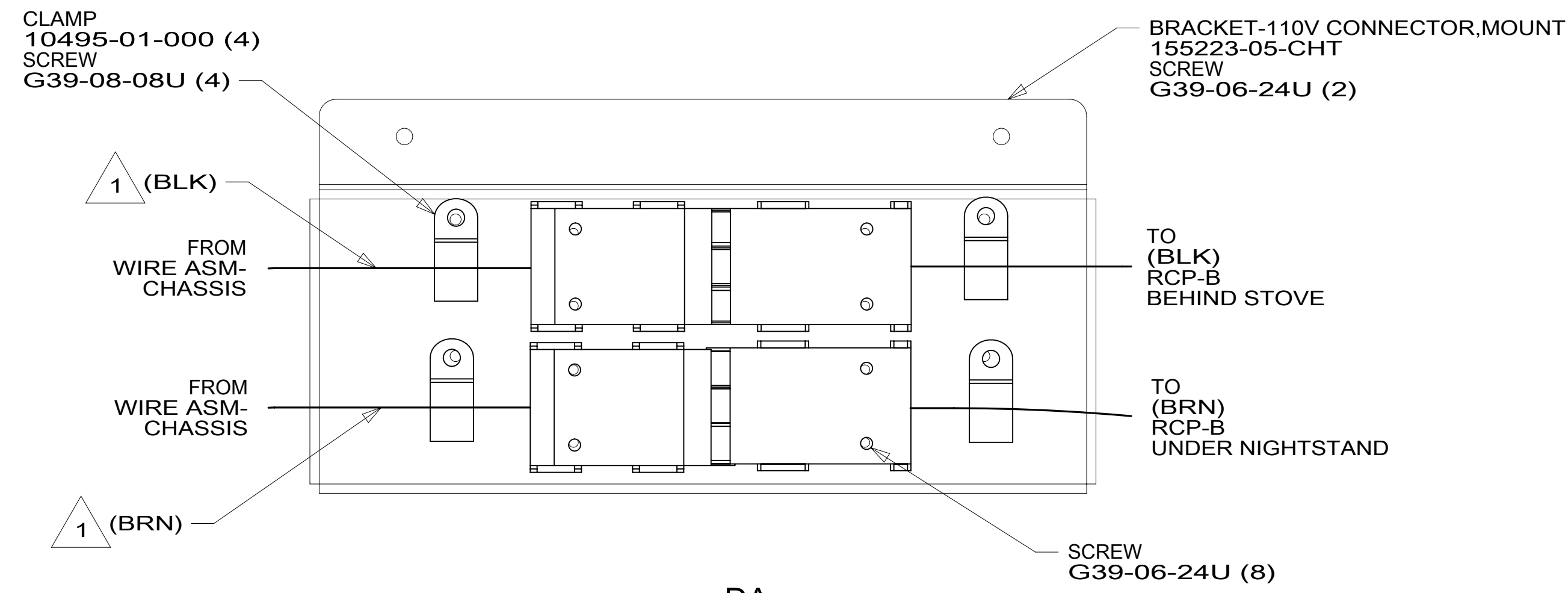
- NOTES:
- 5 WIRE COMES FROM ROOF.
  - 4. AT MINIMUM ALL WIRES TO BE SUPPORTED AND SECURED PER CODE REQUIREMENTS. USE CLAMP 10495 OR 10497 OR WIRE TIE 8343 OR 108046 AND SCREW G67-XX-XXX OR G56-XX-XXX AS APPROPRIATE FOR INSTALLATION.
  - 3 WIRES ROUTE THRU FLOOR IN THIS AREA.
  - 2 SEE LOAD CENTER/ATS INSTALLATION FOR ADDITIONAL INFORMATION.
  - 1 WIRE ROUTED IN SIDEWALL.

FOR ELECTRICAL TORQUE SPECIFICATIONS SEE DWG NO. 128783-01-000

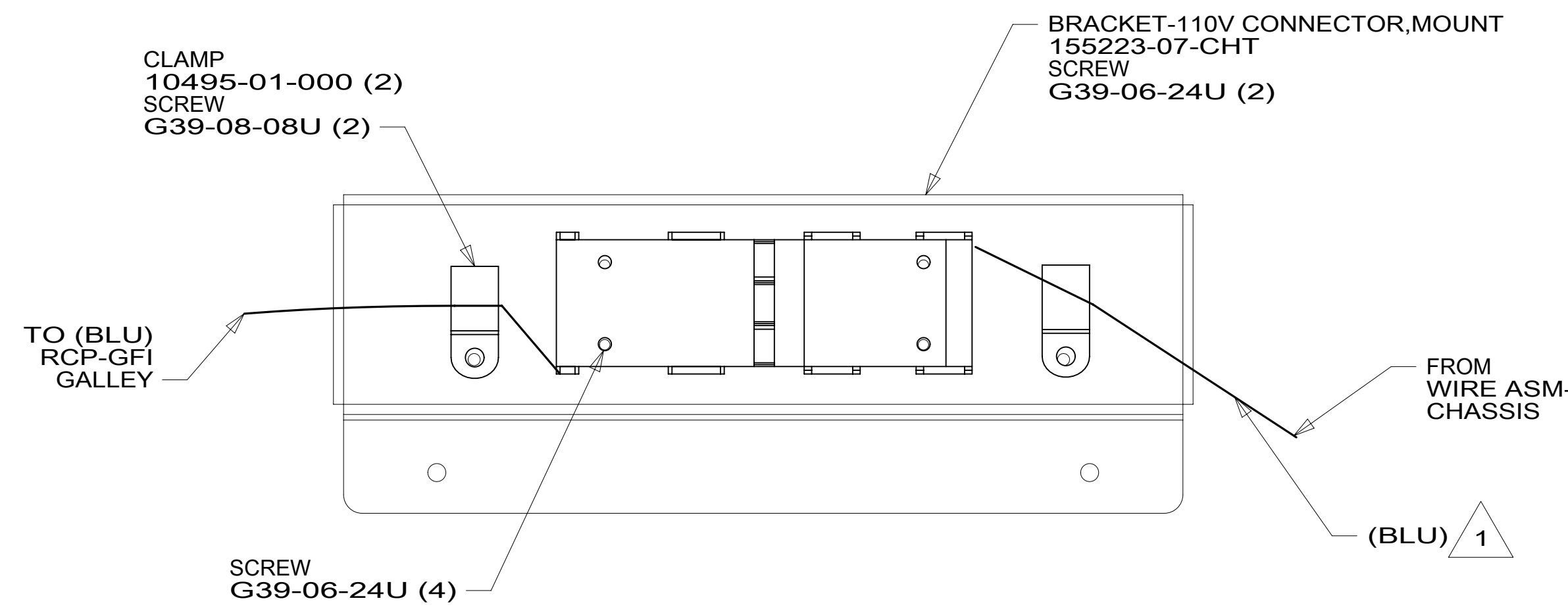
FOR ELECTRICAL CALLOUTS SEE DWG NO. 121339-01-000

- 265 CODES/STANDARDS-CSA/CMVSS
- 1B1 CODES/STANDARDS USA

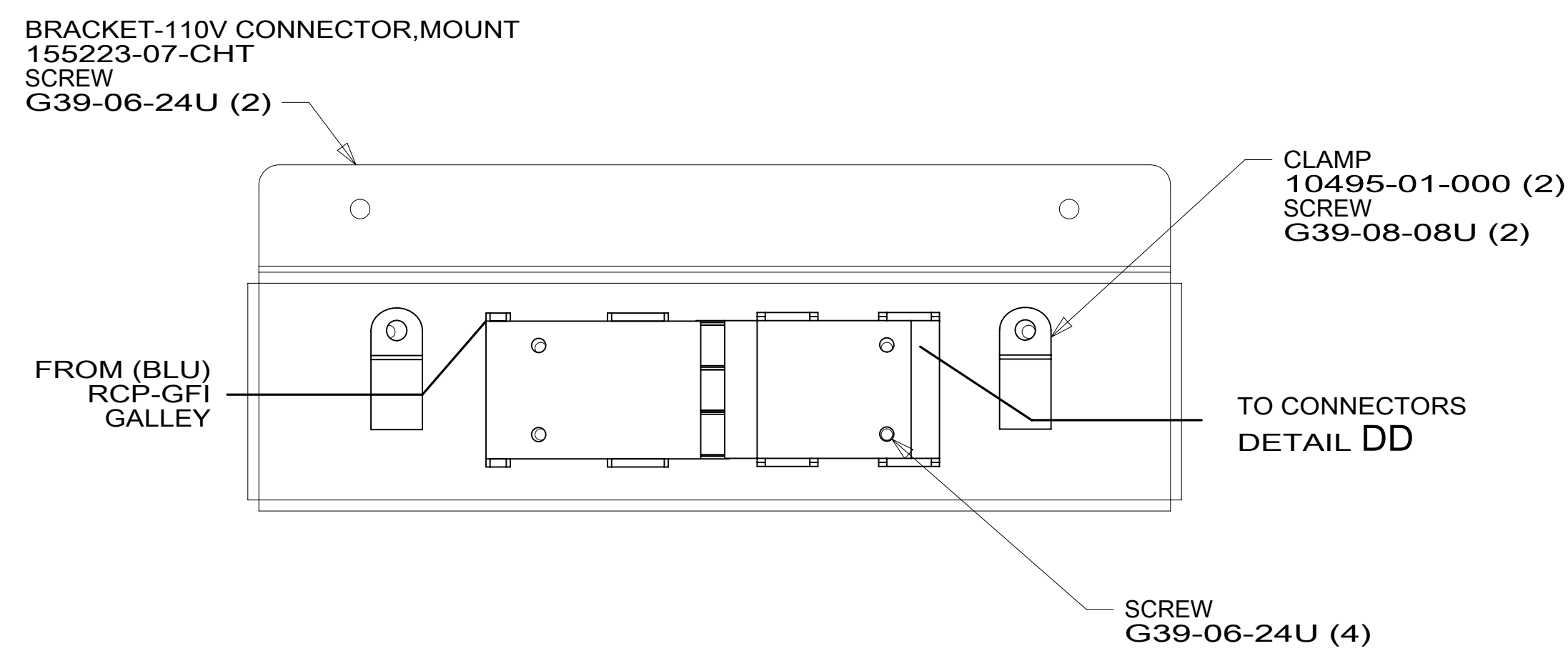
DESCRIPTION:	
<b>WIRING INSTL-BODY, 110V</b>	
SHEET:	REV:
3 OF 6	
ITEM/PART NO.:	
000180331 / 30116101000	



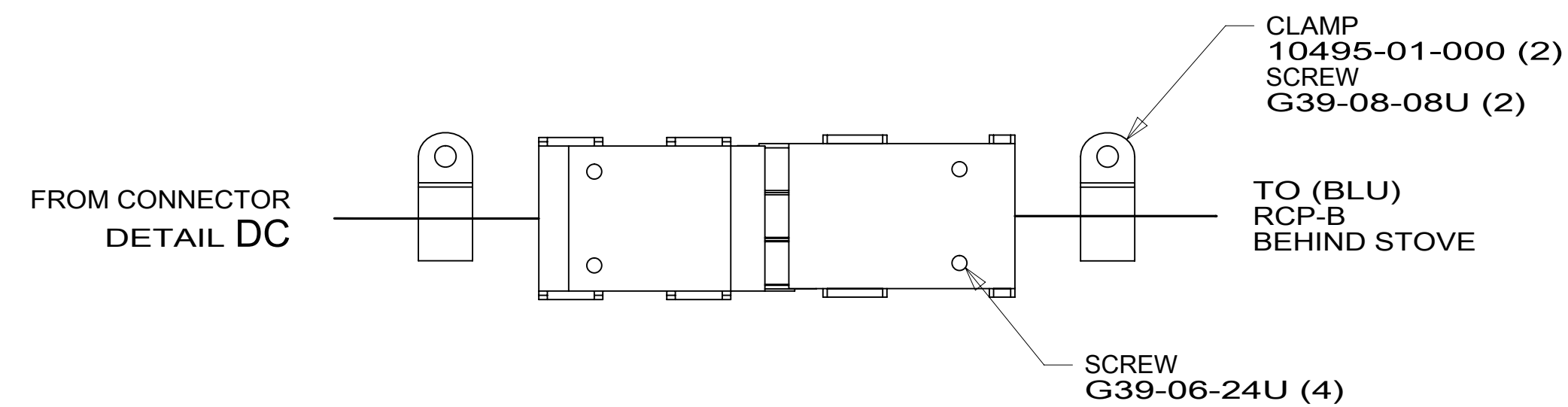
DETAIL DA



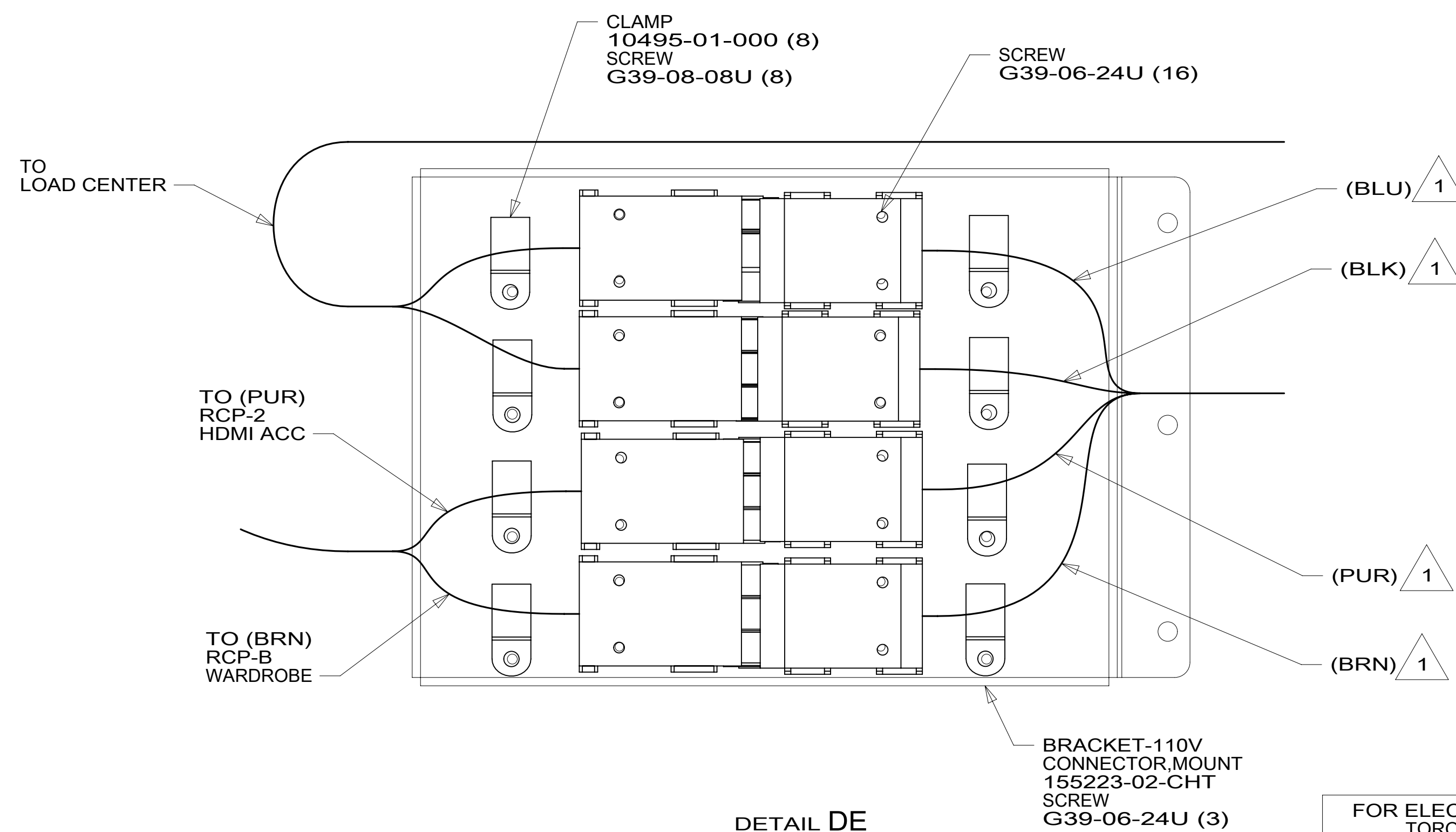
DETAIL DB



DETAIL DC



DETAIL DD



DETAIL DE

1 SOW CORD IS A PART OF WIRE ASM-CHASSIS.

FOR ELECTRICAL TORQUE SPECIFICATIONS SEE DWG NO. 128783-01-000

FOR ELECTRICAL CALLOUTS SEE DWG NO. 121339-01-000

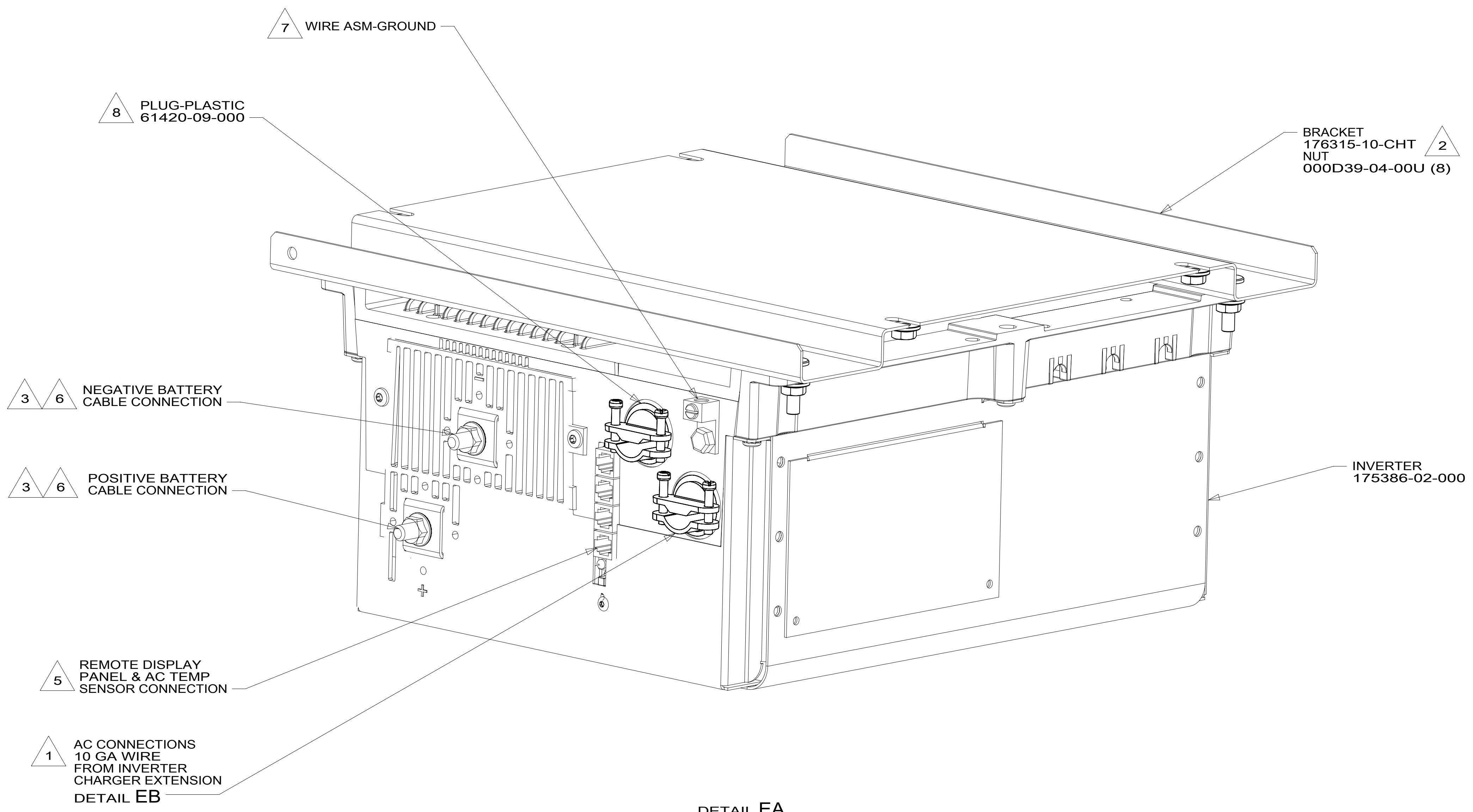
265 CODES/STANDARDS-CSA/CMVSS

1B1 CODES/STANDARDS USA

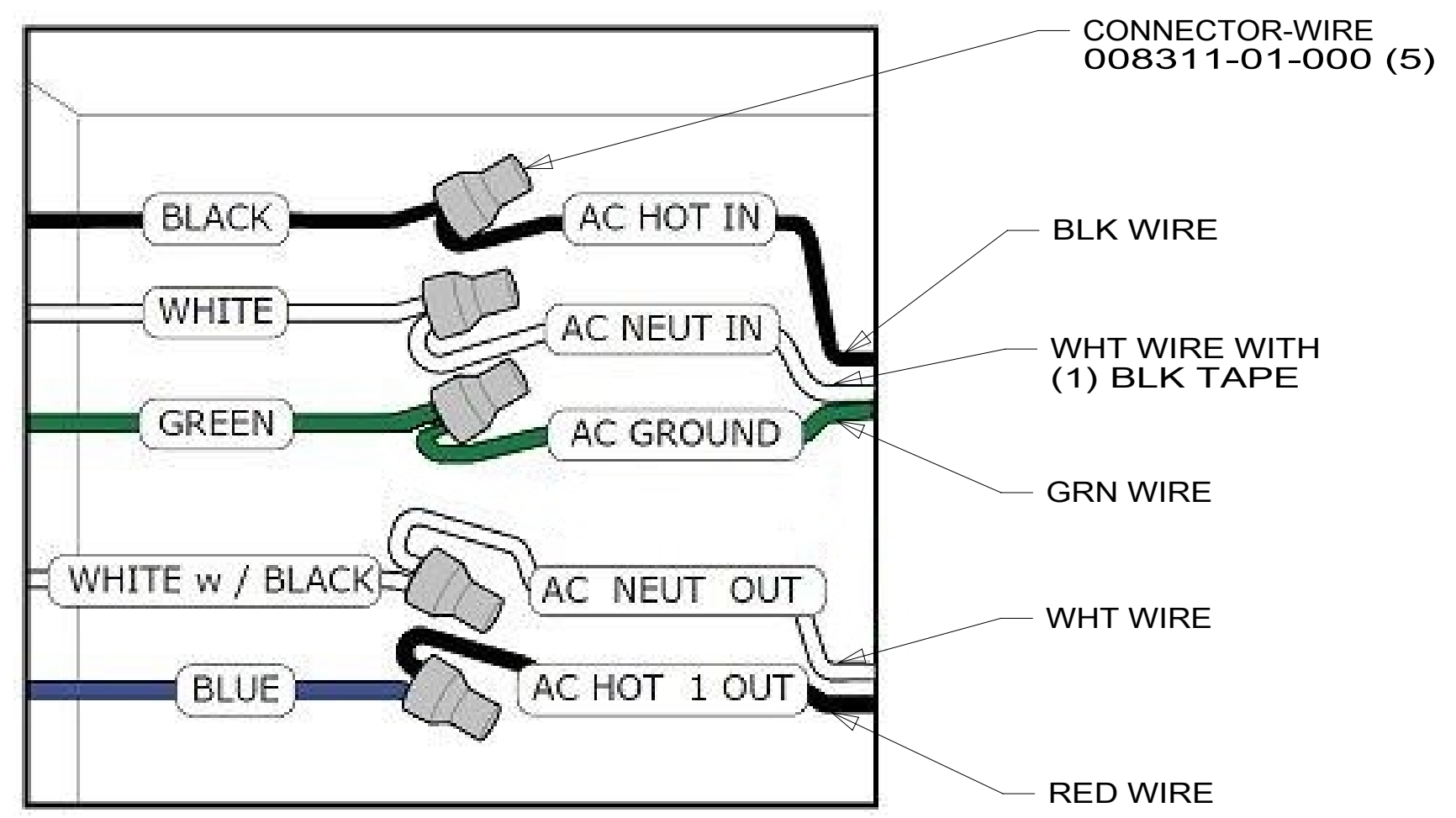
1B1 265

DESCRIPTION: WIRING INSTL-BODY, 110V

SHEET: 4 OF 6 ITEM/PART NO: 000180331 / 30116101000 REV



DETAIL EA



DETAIL EB

- NOTES:
- 8 REMOVE INVERTER SUPPLIED CONNECTORS. USE PLUG AND CONNECTOR ON INVERTER CHARGER EXTENSION CABLE ASM.
  - 7 SEE BATTERY INSTL FOR ADDITIONAL INFORMATION.
  - 6 DO NOT USE POWER/AIR TOOL TO INSTALL NUT. TORQUE TO 10-12 FT LBS.
  - 5 CABLES PART OF WIRE ASM-CHASSIS.
  - 4. SEE INVERTER/CHARGER OWNER'S MANUAL FOR ADDITIONAL INFORMATION.
  - 3 SEE BATTERY INSTL FOR ADDITIONAL INFORMATION.
  - 2 BRACKET IS LOCATED BY HOLES ON BRACKET.
  - 1 SEE LOAD CENTER/ATS ASM FOR ADDITIONAL INFORMATION.

FOR ELECTRICAL TORQUE SPECIFICATIONS SEE DWG NO. 128783-01-000

FOR ELECTRICAL CALLOUTS SEE DWG NO. 121339-01-000

265 CODES/STANDARDS-CSA/CMVSS  
1B1 CODES/STANDARDS USA

DESCRIPTION:		1B1	265
<b>WIRING INSTL-BODY, 110V</b>			
SHEET:	ITEM/PART NO.:	REV	
5 OF 6	000180331 / 30116101000		