

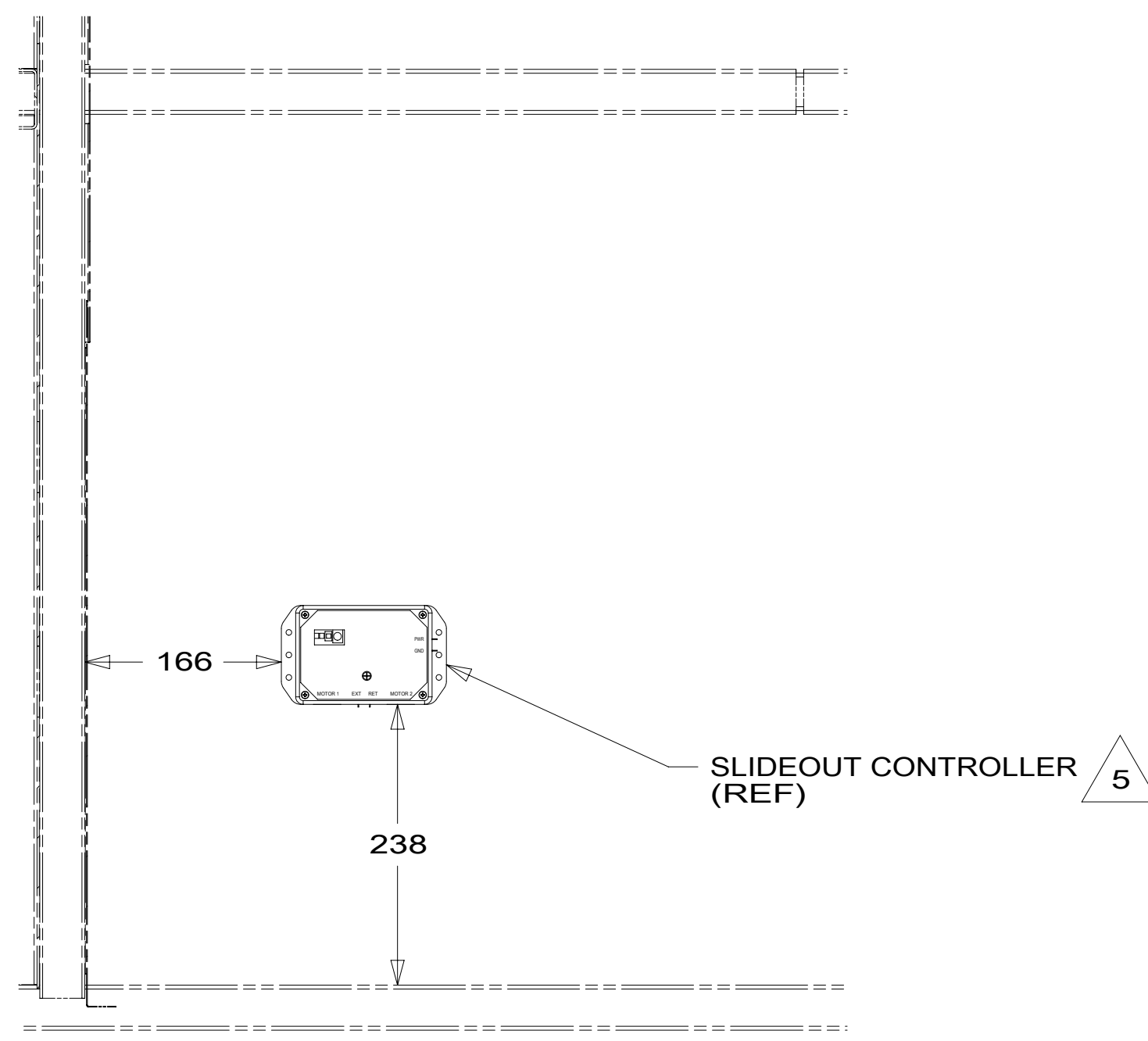
SLIDEOUT WIRE IS PART OF WIRE ASM-CHASSIS

ROUTE TO REAR MOTOR

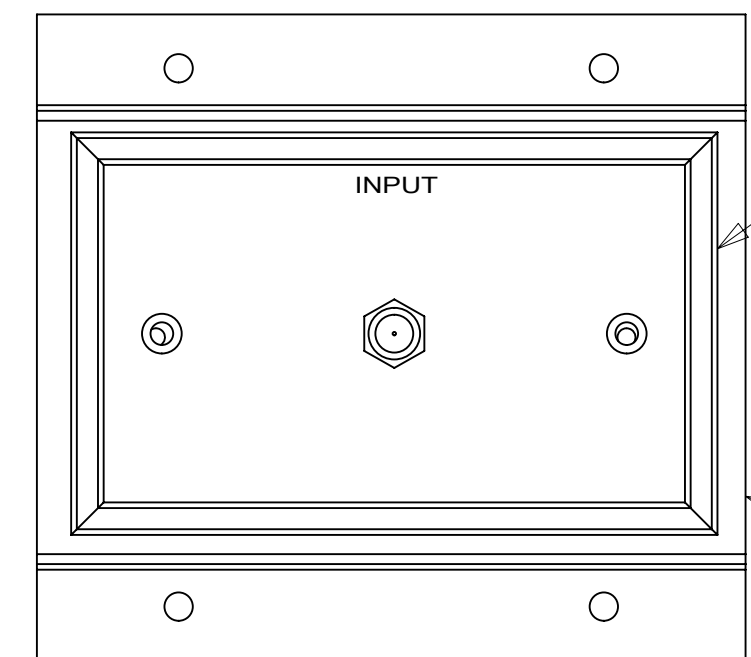
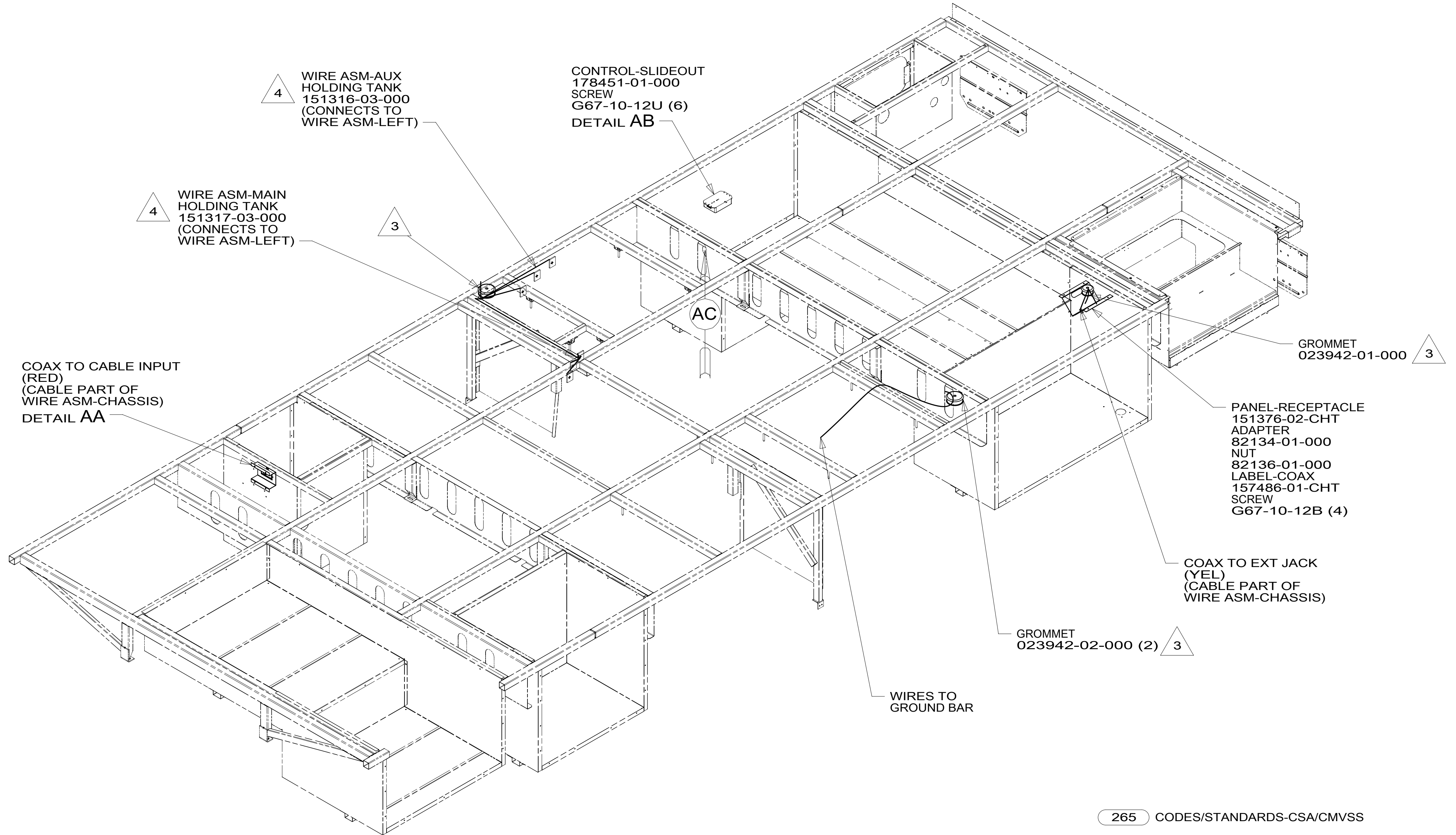
ROUTE TO FRONT MOTOR

SLIDEOUT WIRE IS PART OF WIRE ASM-CHASSIS

DETAIL AB



VIEW AC



DETAIL AA

PLATE-WALL, DUAL COAX
149557-07-CHT
SCREW
G39-08-08U (2)

PANEL-SERVICE
132862-04-CHT
SCREW
G11-10-10U (4)
CAP-SCREW, MOLDED
93249-01-000 (4)

FOR ELECTRICAL TORQUE SPECIFICATIONS SEE DWG NO. 128783-01-000

FOR ELECTRICAL CALLOUTS SEE DWG NO. 121339-01-000

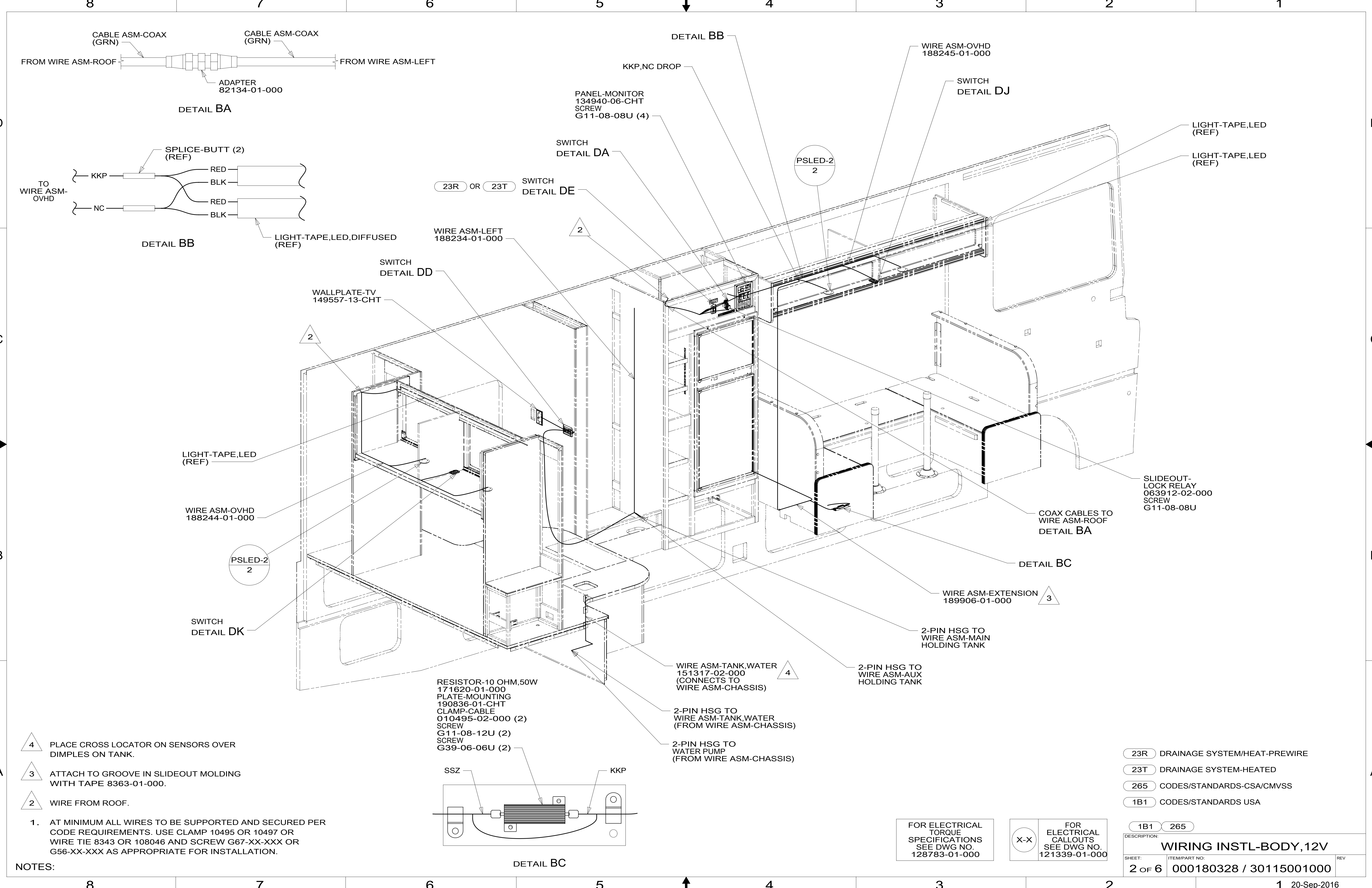
- NOTES:
- 5 DIMENSIONS FROM TUBES OF FRAME TO EDGE OF CONTROL MODULE.
 - 4 PLACE CROSS LOCATOR ON SENSORS OVER DIMPLES ON TANK.
 - 3 WIRE PASSES THROUGH FLOOR IN THIS AREA.
 - 2. ROUTE TANK SENSOR WIRES SO THEY DO NOT PASS OVER SENSORS. USE WIRE TIE MOUNT 155366-01-000 AND WIRE TIE 8343-01-000 AS NEEDED. TANK SURFACE MUST BE CLEANED USING ISOPROPYL ALCOHOL AND PRIMED WITH PRIMER 94.
 - 1. AT MINIMUM ALL WIRES TO BE SUPPORTED AND SECURED PER CODE REQUIREMENTS. USE CLAMP 10495 OR 10497 OR WIRE TIE 8343 OR 108046 AND SCREW G67-XX-XXX OR G56-XX-XXX AS APPROPRIATE FOR INSTALLATION.

265 CODES/STANDARDS-CSA/CMVSS
1B1 CODES/STANDARDS USA

1B1 265



DSNR:		ALL DIMENSIONS ARE IN MILLIMETERS	
DIFFR:		MATERIAL:	
UNSPECIFIED TOLERANCES:			
WHOLE DIM (X)	3		
ONE-PLACE (X.X)	1.5		
TWO-PLACE (X.XX)	0.50		
ANGLE	1°		
REFER TO ES0018 FOR FASTENER TIGHTENING GUIDELINES		WEIGHT: (LBS)	FIRST USED:
			16 A27B
WIRING INSTL-BODY, 12V			
SHEET:	ITEM/PART NO.:	REV:	
1 OF 6	000180328 / 30115001000		



8 7 6 5 4 3 2 1

D

C

B

A

D

C

B

A

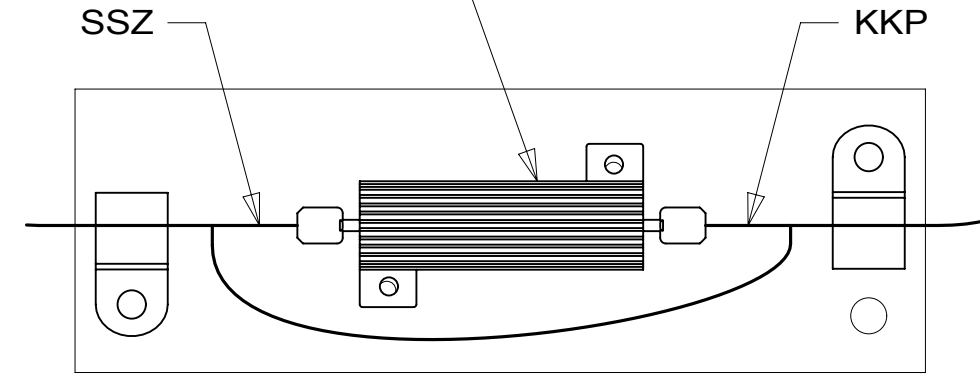
TO WIRE ASM-OVHD

NOTES:

- AT MINIMUM ALL WIRES TO BE SUPPORTED AND SECURED PER CODE REQUIREMENTS. USE CLAMP 10495 OR 10497 OR WIRE TIE 8343 OR 108046 AND SCREW G67-XX-XXX OR G56-XX-XXX AS APPROPRIATE FOR INSTALLATION.

- 4 PLACE CROSS LOCATOR ON SENSORS OVER DIMPLES ON TANK.
- 3 ATTACH TO GROOVE IN SLIDEOUT MOLDING WITH TAPE 8363-01-000.
- 2 WIRE FROM ROOF.

RESISTOR-10 OHM,50W
171620-01-000
PLATE-MOUNTING
190836-01-CHT
CLAMP-CABLE
010495-02-000 (2)
SCREW
G11-08-12U (2)
SCREW
G39-06-06U (2)



DETAIL BC

LIGHT-TAPE,LED (REF)

DETAIL BA

DETAIL BB

DETAIL BB

SWITCH
DETAIL DA

SWITCH
DETAIL DE

SWITCH
DETAIL DD

SWITCH
DETAIL DK

SWITCH
DETAIL DJ

LIGHT-TAPE,LED (REF)

LIGHT-TAPE,LED (REF)

SLIDEOUT-LOCK RELAY
063912-02-000
SCREW
G11-08-08U

COAX CABLES TO WIRE ASM-ROOF
DETAIL BA

DETAIL BC

WIRE ASM-EXTENSION
189906-01-000

2-PIN HSG TO WIRE ASM-AUX HOLDING TANK

2-PIN HSG TO WIRE ASM-TANK, WATER (FROM WIRE ASM-CHASSIS)

WIRE ASM-TANK, WATER
151317-02-000
(CONNECTS TO WIRE ASM-CHASSIS)

2-PIN HSG TO WIRE ASM-TANK, WATER (FROM WIRE ASM-CHASSIS)

2-PIN HSG TO WATER PUMP (FROM WIRE ASM-CHASSIS)

KKP,NC DROP

PANEL-MONITOR
134940-06-CHT
SCREW
G11-08-08U (4)

WIRE ASM-OVHD
188245-01-000

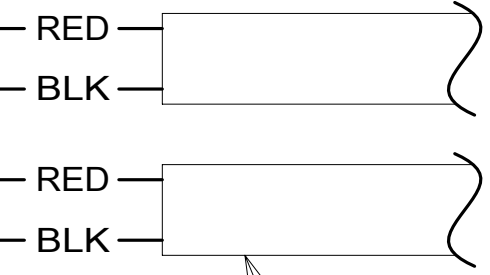
PSLED-2
2

PSLED-2
2

WALLPLATE-TV
149557-13-CHT

WIRE ASM-LEFT
188234-01-000

SPLICE-BUTT (2)
(REF)



CABLE ASM-COAX (GRN)

CABLE ASM-COAX (GRN)

ADAPTER
82134-01-000

FROM WIRE ASM-ROOF

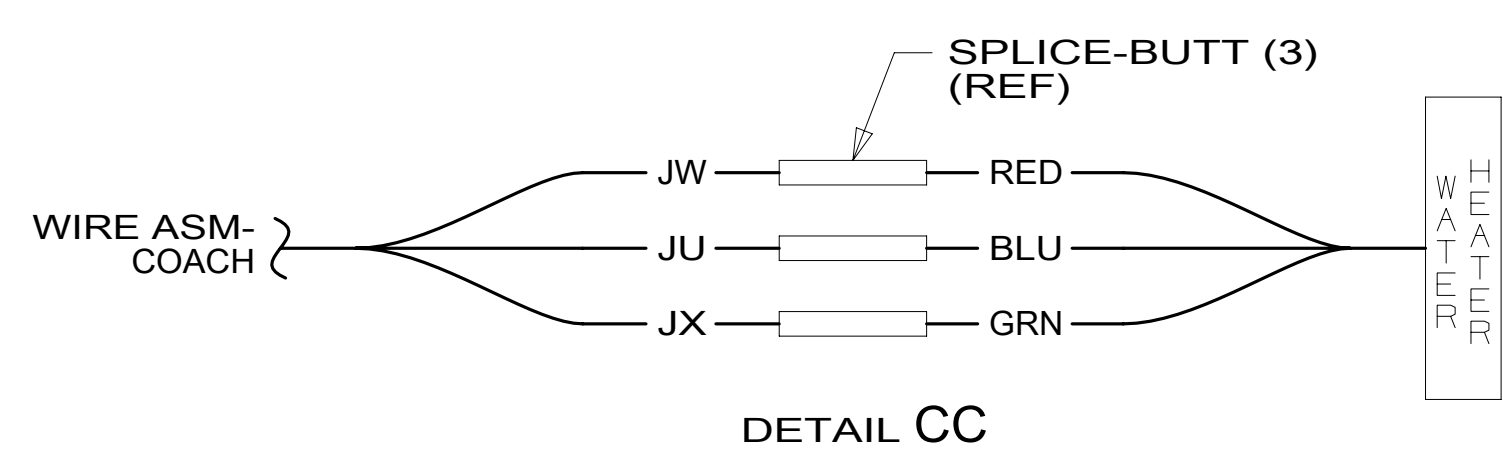
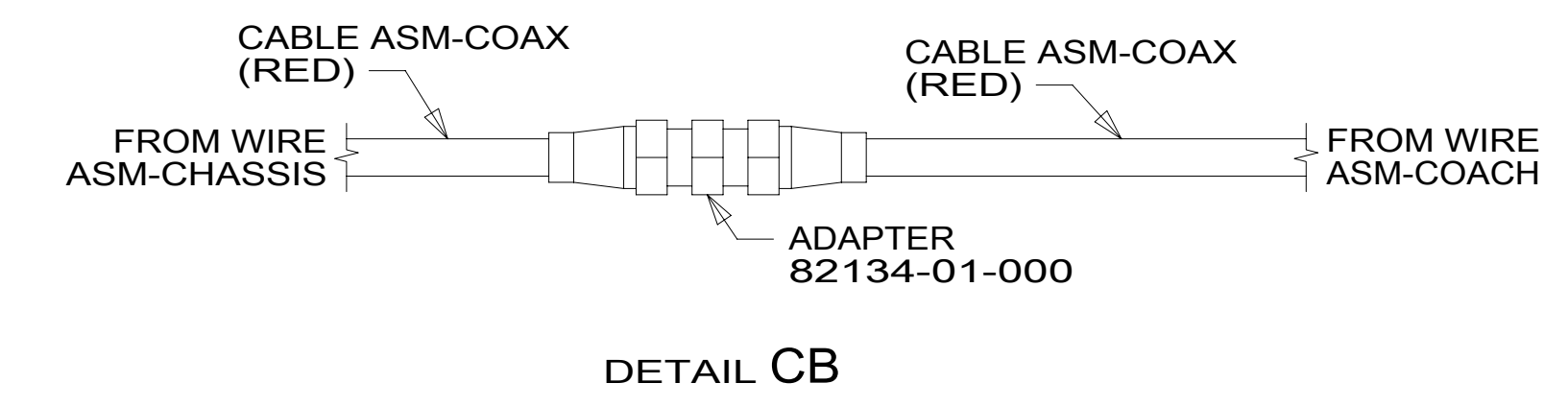
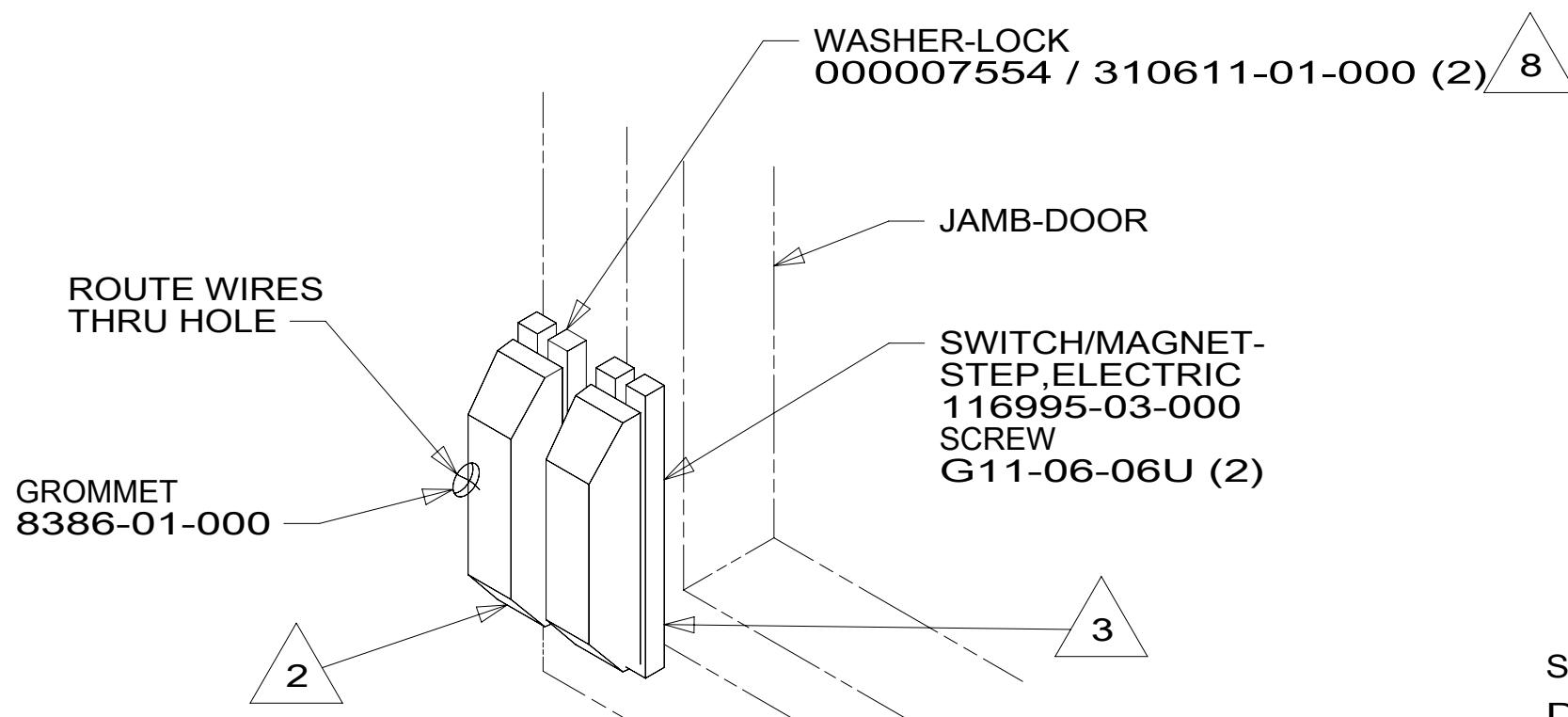
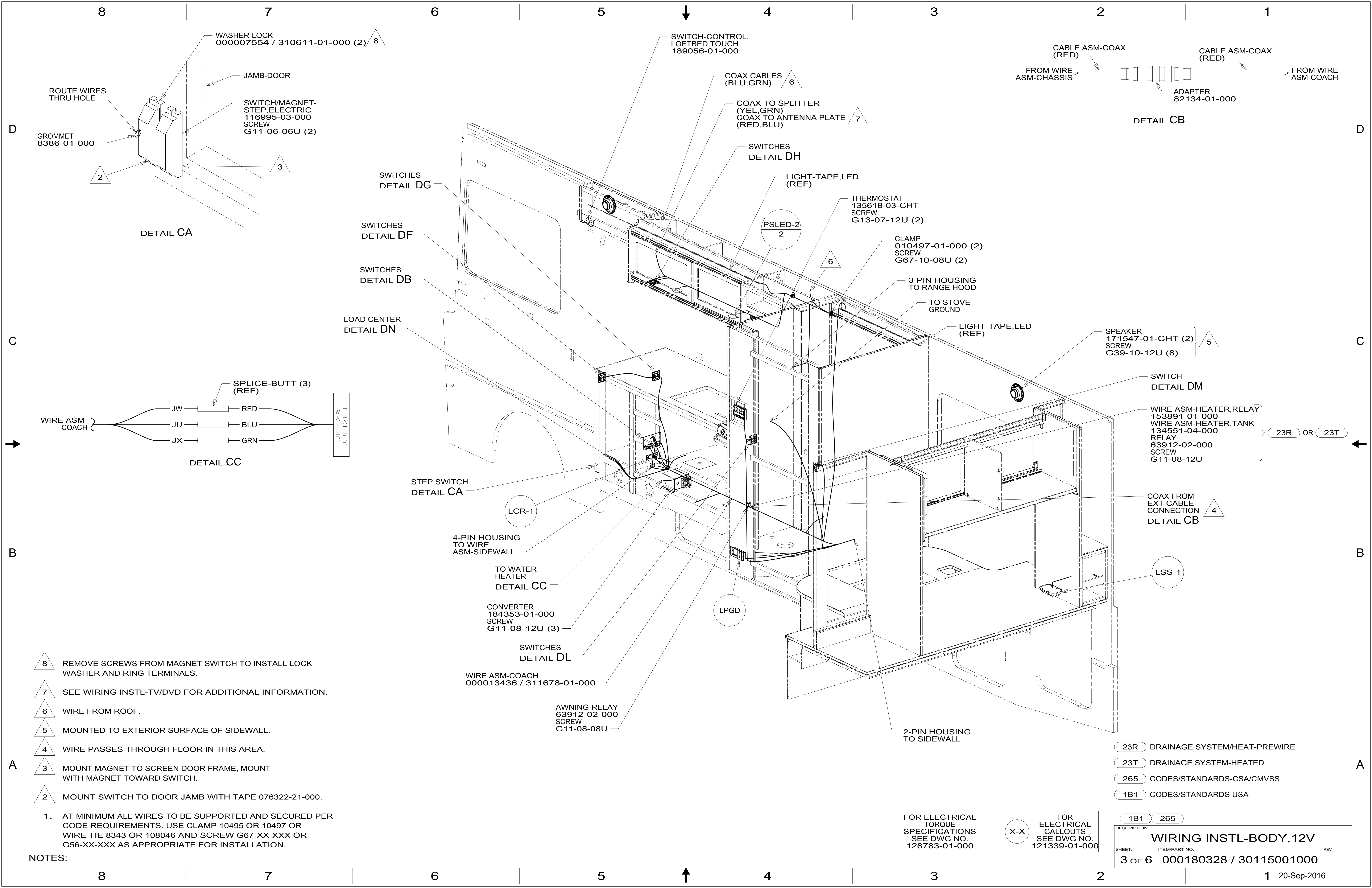
FROM WIRE ASM-LEFT

FOR ELECTRICAL TORQUE SPECIFICATIONS SEE DWG NO. 128783-01-000

FOR ELECTRICAL CALLOUTS SEE DWG NO. 121339-01-000

- 23R DRAINAGE SYSTEM/HEAT-PREWIRE
- 23T DRAINAGE SYSTEM-HEATED
- 265 CODES/STANDARDS-CSA/CMVSS
- 1B1 CODES/STANDARDS USA

DESCRIPTION: WIRING INSTL-BODY, 12V	
SHEET: 2 OF 6	ITEM/PART NO.: 000180328 / 30115001000
REV	



- 8 REMOVE SCREWS FROM MAGNET SWITCH TO INSTALL LOCK WASHER AND RING TERMINALS.
- 7 SEE WIRING INSTL-TV/DVD FOR ADDITIONAL INFORMATION.
- 6 WIRE FROM ROOF.
- 5 MOUNTED TO EXTERIOR SURFACE OF SIDEWALL.
- 4 WIRE PASSES THROUGH FLOOR IN THIS AREA.
- 3 MOUNT MAGNET TO SCREEN DOOR FRAME, MOUNT WITH MAGNET TOWARD SWITCH.
- 2 MOUNT SWITCH TO DOOR JAMB WITH TAPE 076322-21-000.

1. AT MINIMUM ALL WIRES TO BE SUPPORTED AND SECURED PER CODE REQUIREMENTS. USE CLAMP 10495 OR 10497 OR WIRE TIE 8343 OR 108046 AND SCREW G67-XX-XXX OR G56-XX-XXX AS APPROPRIATE FOR INSTALLATION.

NOTES:

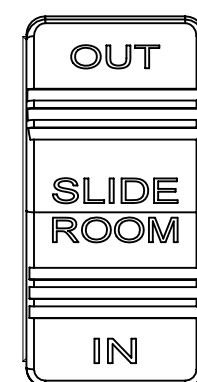
FOR ELECTRICAL TORQUE SPECIFICATIONS SEE DWG NO. 128783-01-000

FOR ELECTRICAL CALLOUTS SEE DWG NO. 121339-01-000

- 23R DRAINAGE SYSTEM/HEAT-PREWIRE
- 23T DRAINAGE SYSTEM-HEATED
- 265 CODES/STANDARDS-CSA/CMVSS
- 1B1 CODES/STANDARDS USA

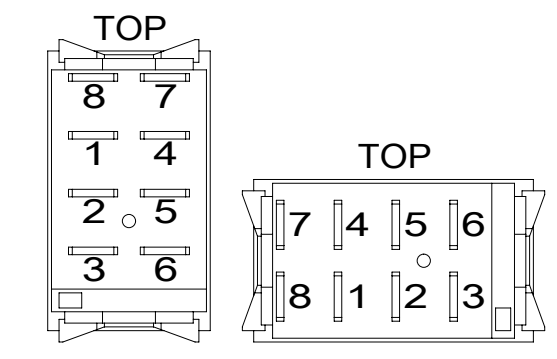
DESCRIPTION:		1B1 265	
WIRING INSTL-BODY, 12V			
SHEET:	ITEM/PART NO.:	REV	
3 OF 6	000180328 / 30115001000		

DRIVER'S SIDE FRONT

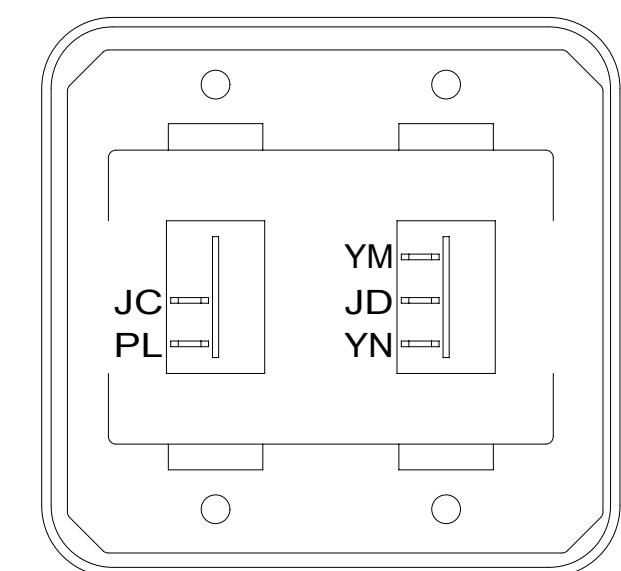


LABEL-SLIDEOUT, DRIVER, FRONT
163992-01-CHT

SWITCH
108357-07-000
ACTUATOR
108356-24-CHT
CIRCUITS
DR,DT,DU

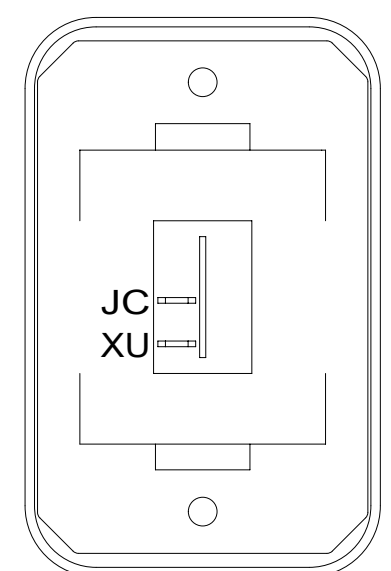


DETAIL DC



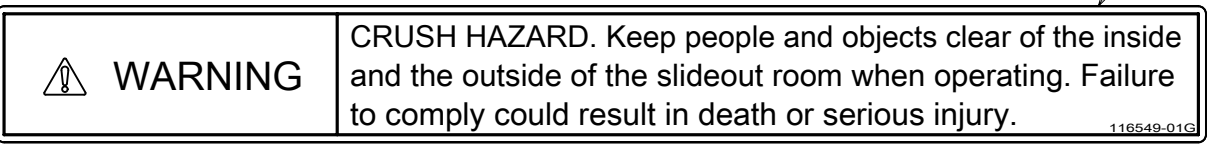
DETAIL DF

SWITCH-ROCKER
135740-01-CHT
135740-02-CHT
SWITCH-BASE
135741-01-CHT
SWITCH-BEZEL
135742-02-CHT
SCREW
G11-08-08U (4)

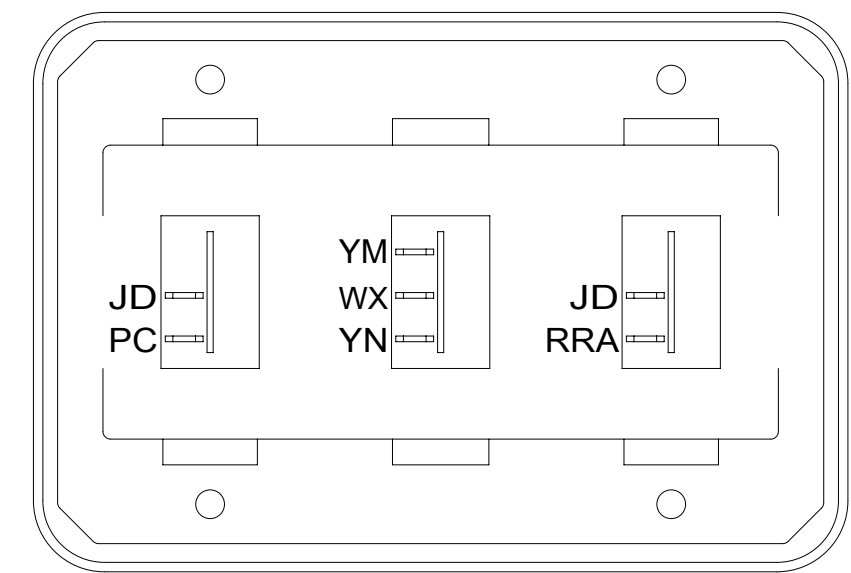


DETAIL DJ

SWITCH-ROCKER
135740-01-CHT
SWITCH-BASE
135741-01-CHT
SWITCH-BEZEL
135742-01-CHT
SCREW
G11-08-08U (2)

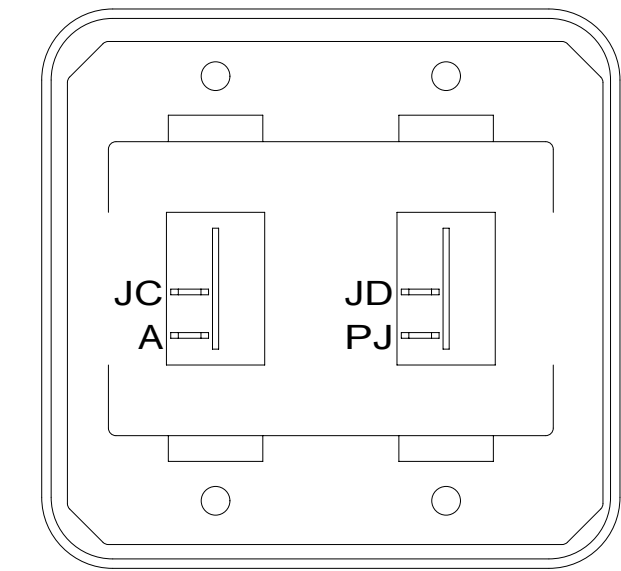


DETAIL DA



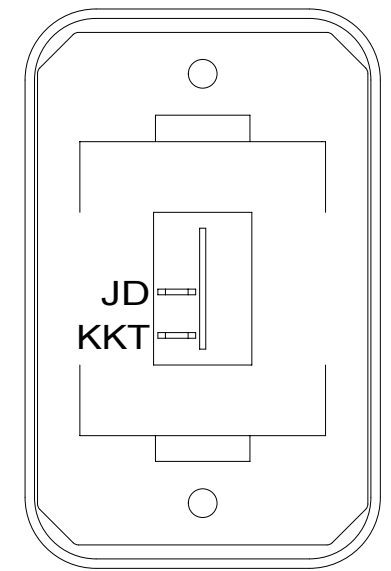
DETAIL DD

SWITCH-ROCKER
135740-01-CHT (2)
135740-02-CHT
SWITCH-BASE
135741-03-CHT
SWITCH-BEZEL
135742-03-CHT
SCREW
G11-08-08U (4)



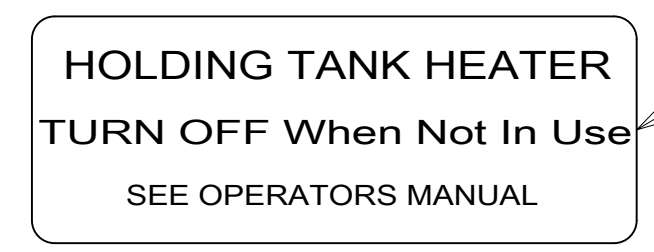
DETAIL DG

SWITCH-ROCKER
135740-01-CHT (2)
SWITCH-BASE
135741-02-CHT
SWITCH-BEZEL
135742-02-CHT
SCREW
G11-08-08U (4)

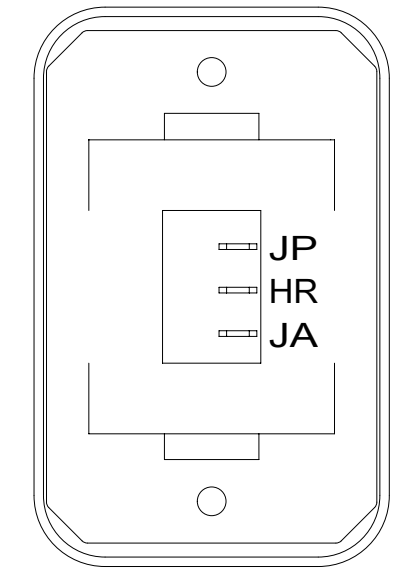


DETAIL DK

SWITCH-ROCKER
135740-01-CHT
SWITCH-BASE
135741-01-CHT
SWITCH-BEZEL
135742-01-CHT
SCREW
G11-08-08U (2)

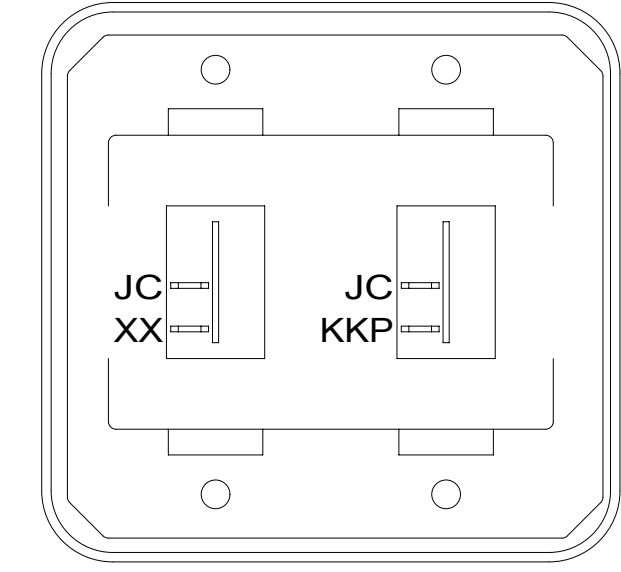


LABEL-SWITCH,HEATER
134563-01-CHT



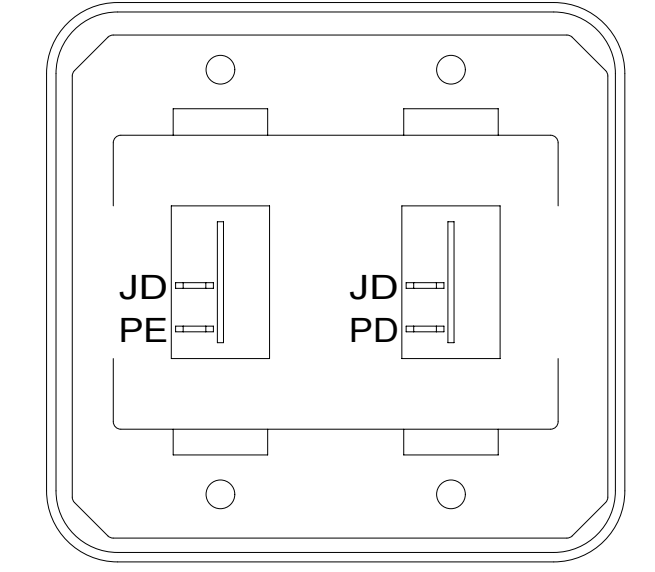
DETAIL DE 23T OR 23R

SWITCH-ROCKER
135740-06-CHT
SWITCH-BASE
135741-01-CHT
SWITCH-BEZEL
135742-01-CHT
SCREW
G11-08-08U (2)



DETAIL DH

SWITCH-ROCKER
135740-01-CHT (2)
SWITCH-BASE
135741-02-CHT
SWITCH-BEZEL
135742-02-CHT
SCREW
G11-08-08U (4)

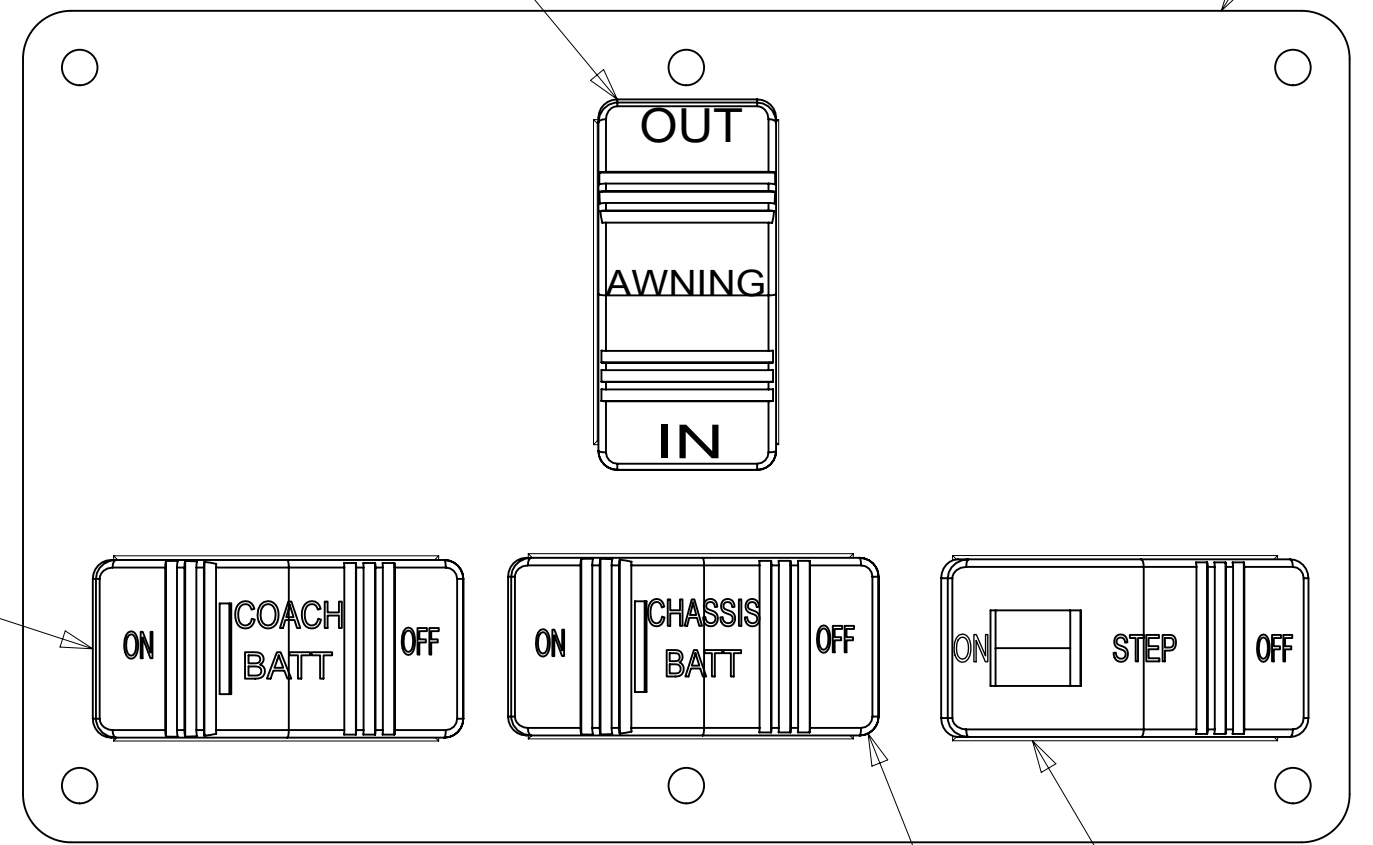


DETAIL DL

SWITCH-ROCKER
135740-01-CHT (2)
SWITCH-BASE
135741-02-CHT
SWITCH-BEZEL
135742-02-CHT
SCREW
G11-08-08U (4)

SWITCH-AWNING
108357-06-000
ACTUATOR-SWITCH
108356-12-CHT
CIRCUITS
FFD,FFR,FFE
FFE,JJR,FFD

PLATE-SWITCH
158431-15-CHT
SCREW
G11-06-10U (6)

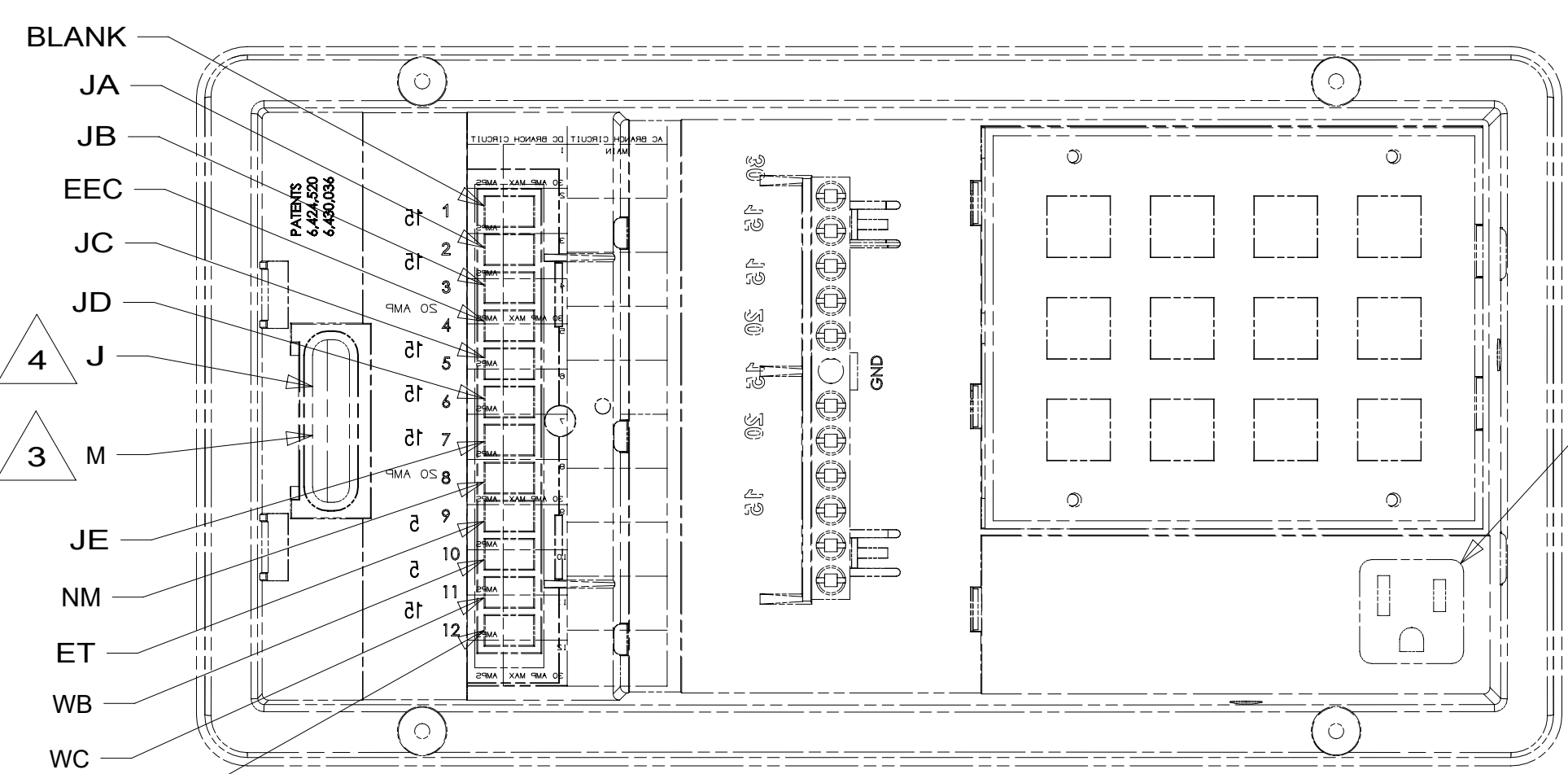


DETAIL DB 1

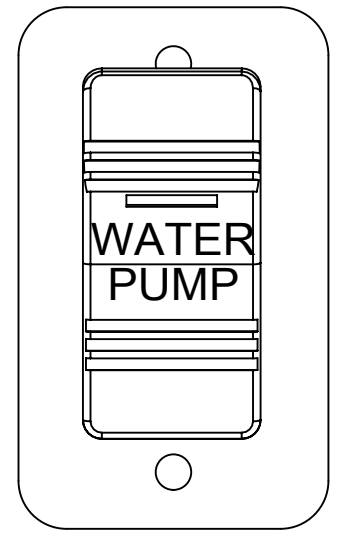
SWITCH-STEP
108357-19-000
CIRCUITS ER,ES

SWITCH-CHASSIS BATTERY
108357-18-000
ACTUATOR-SWITCH
108356-20-CHT
CIRCUITS
TTY,TTZ,MK,UUB,UUC
WIRE ASM-THERM
186796-01-000

SWITCH-COACH BATTERY
108357-18-000
ACTUATOR-SWITCH
108356-19-CHT
CIRCUITS
KF,LG,LJ,LH,WC
WIRE ASM-THERM
186796-01-000



DETAIL DN 2



DETAIL DM

SWITCH-PUMP
108357-15-000
ACTUATOR
108356-23-CHT
PLATE
98351-07-CHT
SCREW
G11-06-10U (2)

- NOTES:
- 4 CIRCUIT FROM WIRE ASM-CHASSIS.
 - 3 CIRCUIT FROM WIRE ASM-COACH.
 - 2 FOR REFERENCE ONLY, SEE LOAD CENTER/ATS ASM FOR ADDITIONAL INFORMATION.
 - 1 FOR SWITCH ORIENTATION SEE DETAIL DC.

FOR ELECTRICAL TORQUE SPECIFICATIONS SEE DWG NO. 128783-01-000

FOR ELECTRICAL CALLOUTS SEE DWG NO. 121339-01-000

- 23T DRAINAGE SYSTEM-HEATED
- 23R DRAINAGE SYSTEM/HEAT-PREWIRE
- 265 CODES/STANDARDS-CSA/CMVSS
- 1B1 CODES/STANDARDS USA

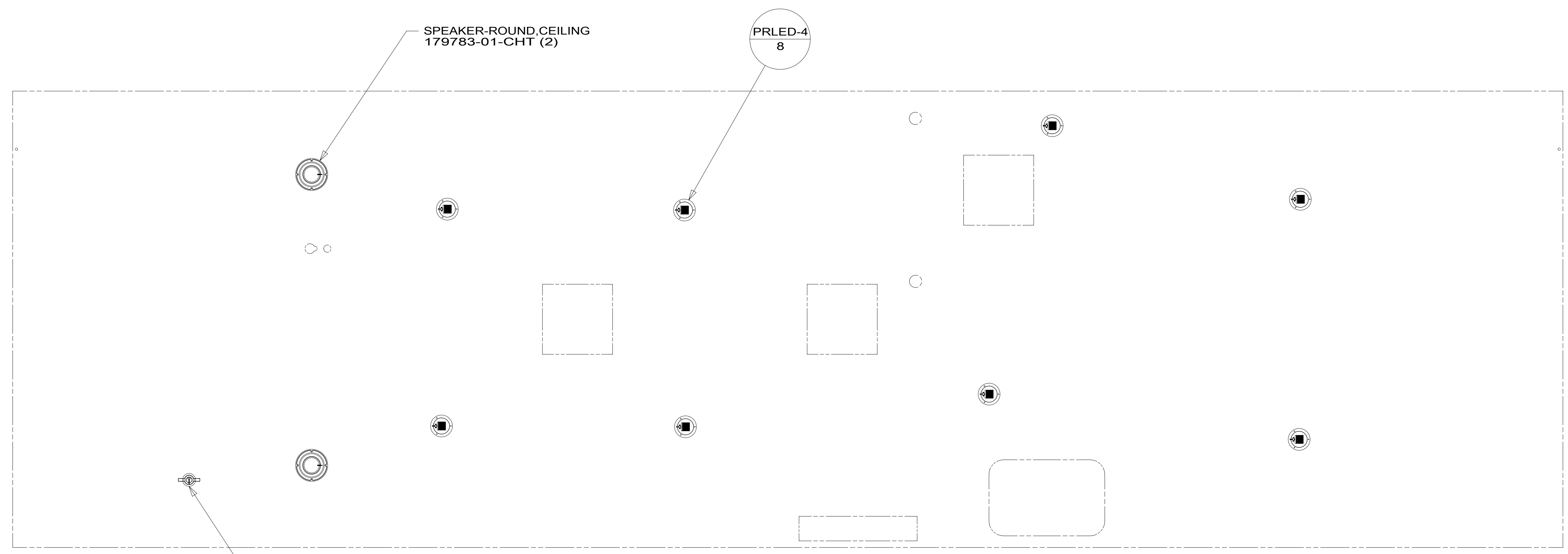
DESCRIPTION: WIRING INSTL-BODY, 12V	
SHEET: 4 OF 6	ITEM/PART NO: 000180328 / 30115001000
REV 1 20-Sep-2016	

8 7 6 5 4 3 2 1



D

D



C

C



B

B

A

A

8 7 6 5 4 3 2 1



265 CODES/STANDARDS-CSA/CMVSS
 1B1 CODES/STANDARDS USA

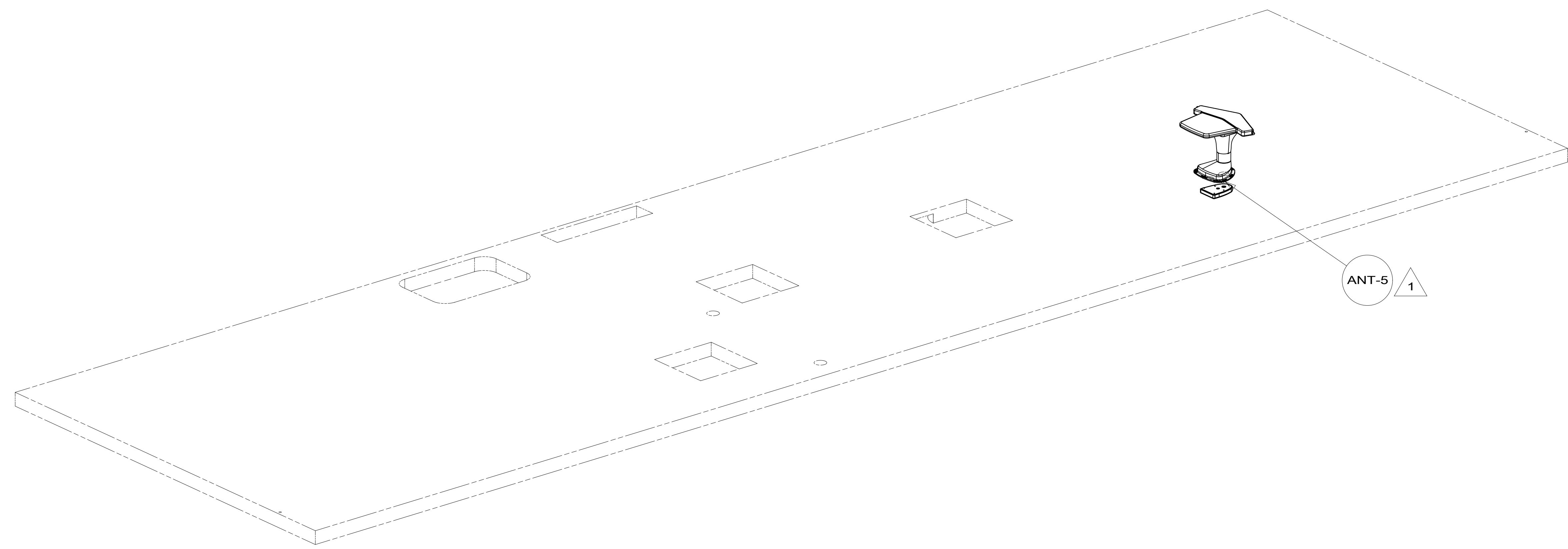
FOR ELECTRICAL TORQUE SPECIFICATIONS SEE DWG NO. 128783-01-000

FOR ELECTRICAL CALLOUTS SEE DWG NO. 121339-01-000

DESCRIPTION:	
1B1 265	
WIRING INSTL-BODY, 12V	
SHEET:	ITEM/PART NO. REV
5 OF 6	000180328 / 30115001000

8 7 6 5 4 3 2 1

D
C
B
A



NOTES:

1 SEE ANTENNA INSTALLATION MANUAL FOR CORRECT INSTALLATION PROCEDURE.

FOR ELECTRICAL TORQUE SPECIFICATIONS SEE DWG NO. 128783-01-000

FOR ELECTRICAL CALLOUTS SEE DWG NO. 121339-01-000

265 CODES/STANDARDS-CSA/CMVSS
1B1 CODES/STANDARDS USA

DESCRIPTION:	
1B1 265	
WIRING INSTL-BODY, 12V	
SHEET:	ITEM/PART NO. REV
6 OF 6	000180328 / 30115001000

8 7 6 5 4 3 2 1 20-Sep-2016