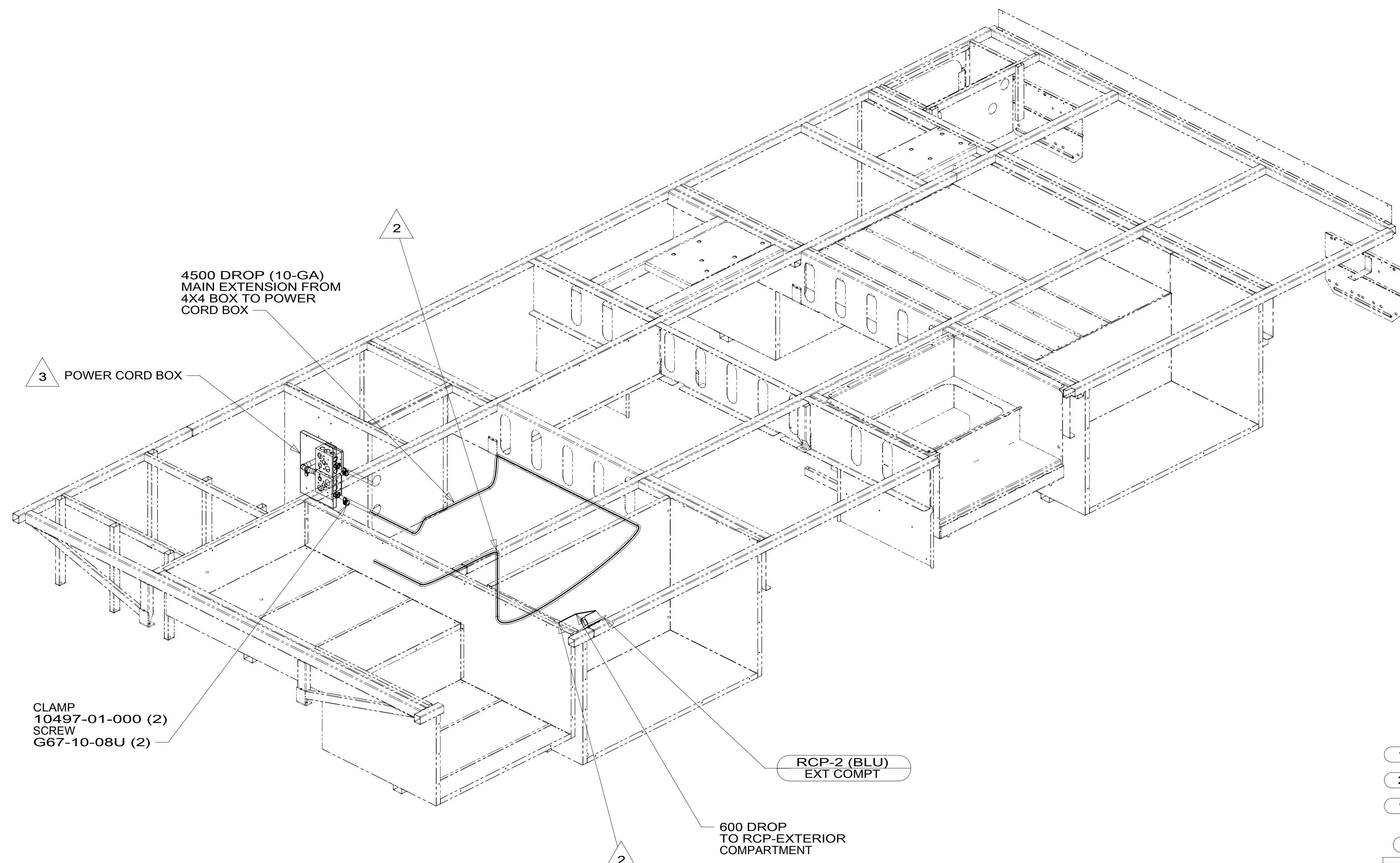


DRAWING NO.	FEATURE
301112-01	-----
301112-11	1B1 12D
301112-15	265 12D



4. AT MINIMUM ALL WIRES TO BE SUPPORTED AND SECURED PER CODE REQUIREMENTS. USE CLAMP 10495 OR 10497 OR WIRE TIE 8343 OR 108046 AND SCREW G67-XX-XXX OR G56-XX-XXX AS APPROPRIATE FOR INSTALLATION.
- 3 SEE LOAD CENTER/ATS ASM FOR ADDITIONAL INFORMATION.
- 2 WIRE ROUTES THROUGH FLOOR IN THIS AREA.
1. WIRES ROUTED UNDER FLOOR.

NOTES:

- 12D ELECTRICAL SYSTEM 30 AMP
- 265 CODES/STANDARDS-CSA/CMVSS
- 1B1 CODES/STANDARDS USA

- 1B1 265



DSNR:		ALL DIMENSIONS ARE IN MILLIMETERS	
DFFR:		MATERIAL:	
UNSPECIFIED TOLERANCES:			
WHOLE DIM (X)	3		
ONE-PLACE (X.X)	1.5		
TWO-PLACE (X.XX)	0.50		
ANGLE	1°		
REFER TO ES0018 FOR FASTENER TIGHTENING GUIDELINES		WEIGHT: (LBS)	FIRST USED:

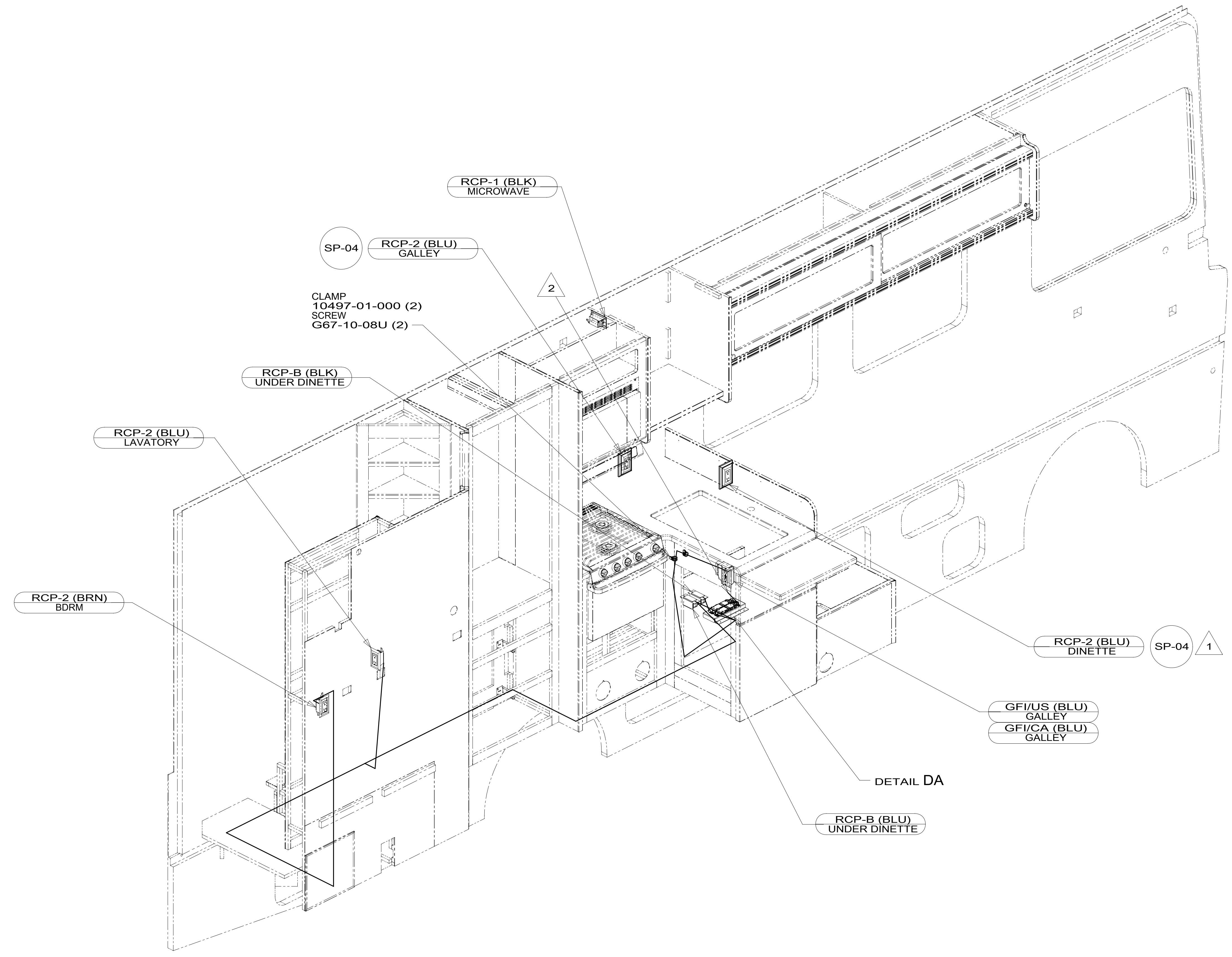
FOR ELECTRICAL TORQUE SPECIFICATIONS SEE DWG NO. 128783-01-000

FOR ELECTRICAL CALLOUTS SEE DWG NO. 121339-01-000

DESCRIPTION: <b>WIRING INSTL-BODY, 110V</b>		
SHEET: 1 OF 5	ITEM/PART NO.: 000180318 / 30111201000	REV:
REF:		1 20-Sep-2016

8 7 6 5 4 3 2 1

D  
C  
B  
A



SP-04

CLAMP  
10497-01-000 (2)  
SCREW  
G67-10-08U (2)

2

RCP-2 (BRN)  
BDRM

RCP-2 (BLU)  
LAVATORY

RCP-B (BLK)  
UNDER DINETTE

RCP-1 (BLK)  
MICROWAVE

RCP-2 (BLU)  
GALLEY

RCP-2 (BLU)  
DINETTE

SP-04 1

GFI/US (BLU)  
GALLEY  
GFI/CA (BLU)  
GALLEY

DETAIL DA

RCP-B (BLU)  
UNDER DINETTE

3. AT MINIMUM ALL WIRES TO BE SUPPORTED AND SECURED PER CODE REQUIREMENTS. USE CLAMP 10495 OR 10497 OR WIRE TIE 8343 OR 108046 AND SCREW G67-XX-XXX OR G56-XX-XXX AS APPROPRIATE FOR INSTALLATION.

2 WIRE ROUTED THRU FLOOR IN THIS AREA.  
1 WIRE ROUTED IN SIDEWALL.

NOTES:

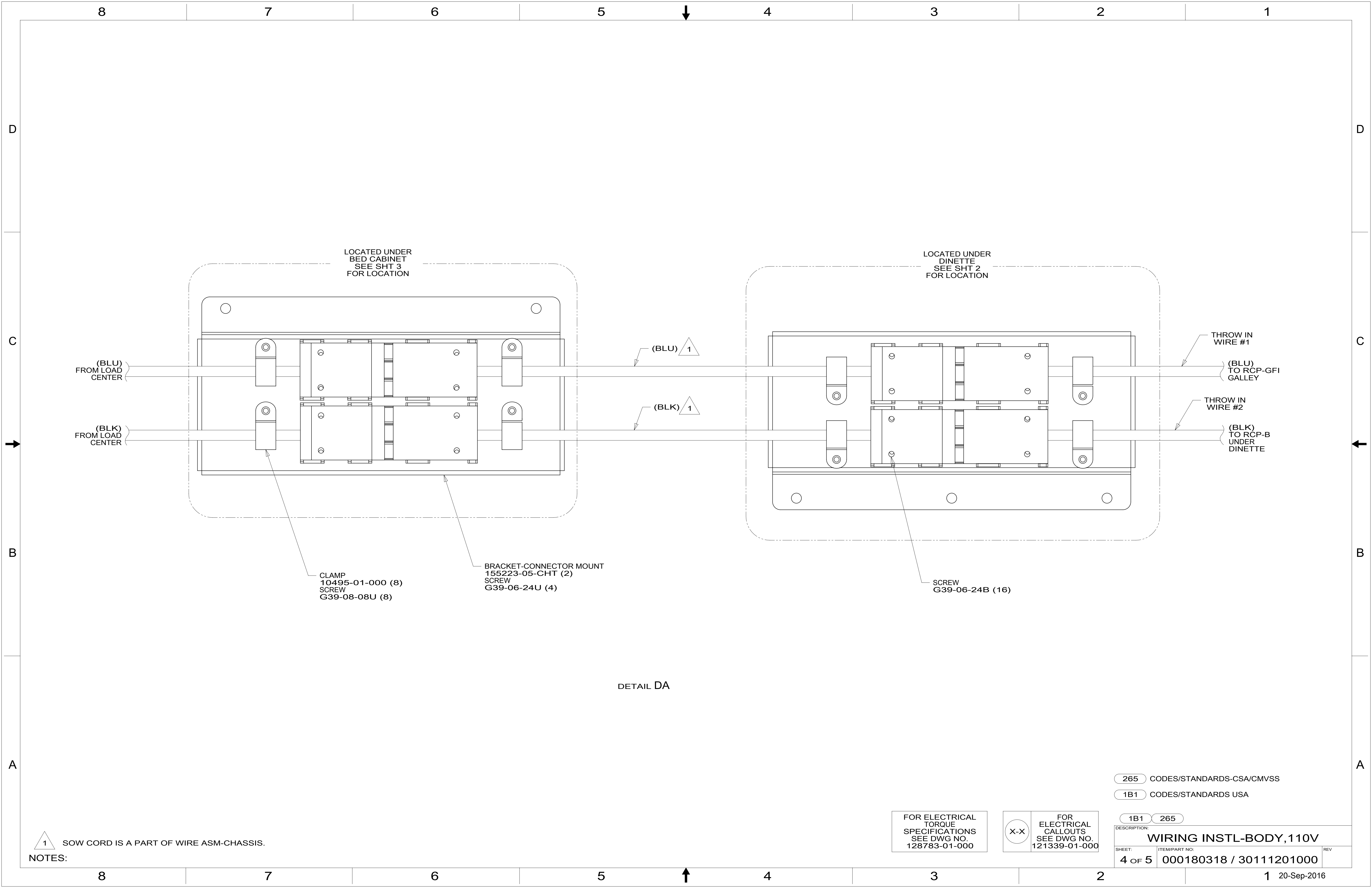
265 CODES/STANDARDS-CSA/CMVSS  
1B1 CODES/STANDARDS USA

FOR ELECTRICAL TORQUE SPECIFICATIONS SEE DWG NO. 128783-01-000

FOR ELECTRICAL CALLOUTS SEE DWG NO. 121339-01-000

1B1	265
DESCRIPTION: <b>WIRING INSTL-BODY, 110V</b>	
SHEET: 2 OF 5	ITEM/PART NO: 000180318 / 30111201000
REV 1 20-Sep-2016	

8 7 6 5 4 3 2 1



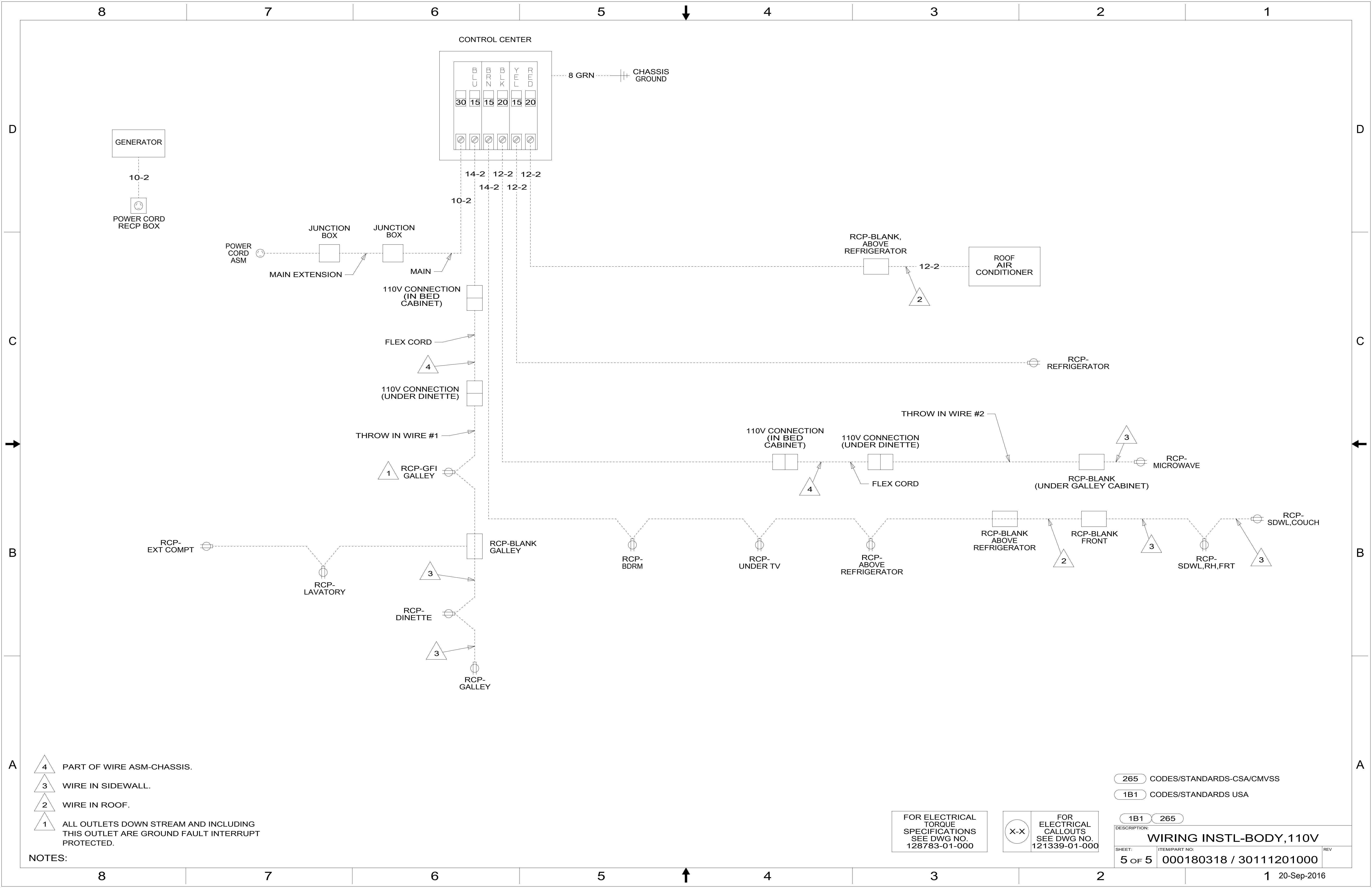
1 SOW CORD IS A PART OF WIRE ASM-CHASSIS.

FOR ELECTRICAL TORQUE SPECIFICATIONS SEE DWG NO. 128783-01-000

FOR ELECTRICAL CALLOUTS SEE DWG NO. 121339-01-000

265 CODES/STANDARDS-CSA/CMVSS  
1B1 CODES/STANDARDS USA

DESCRIPTION:	
1B1 265	
WIRING INSTL-BODY, 110V	
SHEET:	ITEM/PART NO:
4 OF 5	000180318 / 30111201000
REV	



- NOTES:
- 4 PART OF WIRE ASM-CHASSIS.
  - 3 WIRE IN SIDEWALL.
  - 2 WIRE IN ROOF.
  - 1 ALL OUTLETS DOWN STREAM AND INCLUDING THIS OUTLET ARE GROUND FAULT INTERRUPT PROTECTED.

FOR ELECTRICAL TORQUE SPECIFICATIONS SEE DWG NO. 128783-01-000

FOR ELECTRICAL CALLOUTS SEE DWG NO. 121339-01-000

265 CODES/STANDARDS-CSA/CMVSS  
 1B1 CODES/STANDARDS USA

DESCRIPTION: <b>WIRING INSTL-BODY, 110V</b>	
SHEET: 5 OF 5	ITEM/PART NO.: 000180318 / 30111201000
REV 1 20-Sep-2016	