

9. SEE DRAWING 061607 FOR INSTALLATION OF GROMMETS.
8. SECURE DRAINAGE PIPES TO CABINET USING WIRE TIE 108046-02-000, AND SCREW 000G67-10-12U AT INTERVALS OF NOT OF NOT MORE THAN 4 FEET APART.
7. SECURE VENT PIPE TO FLOOR WITH CLAMP 062401-02-000 (2), SCREW 000G67-10-12U (2), BRACKET 136878-01-CHT (2).
6. VENT PIPE MUST PROJECT 51 MIN AND 64 MAX ABOVE ROOF FOR PROPER FIT AND FUNCTION. ADD S-1 (116666-01-CHT SEAL-VENT PIPE) AROUND PIPE ON ROOF BEFORE VENT CAP IS INSTALLED.
5. SEAL AROUND SHOWER WITH SILICONE.
4. USE SMOOTH PLUMBERS PUTTY 167459-01-000 TO SEAL STRAINER (0.2 PER STRAINER).
3. ALL PIPE AND FITTINGS TO BE ASSEMBLED WITH SOLVENT 004020-01-000 (USA), 004020-02-000 (CAN)
2. SLOPE OF TRAP ARM MUST BE 6 PER 305 mm.
1. SLOPE OF HORIZONTAL PIPING TO BE MINIMUM OF 3 PER 305 mm.

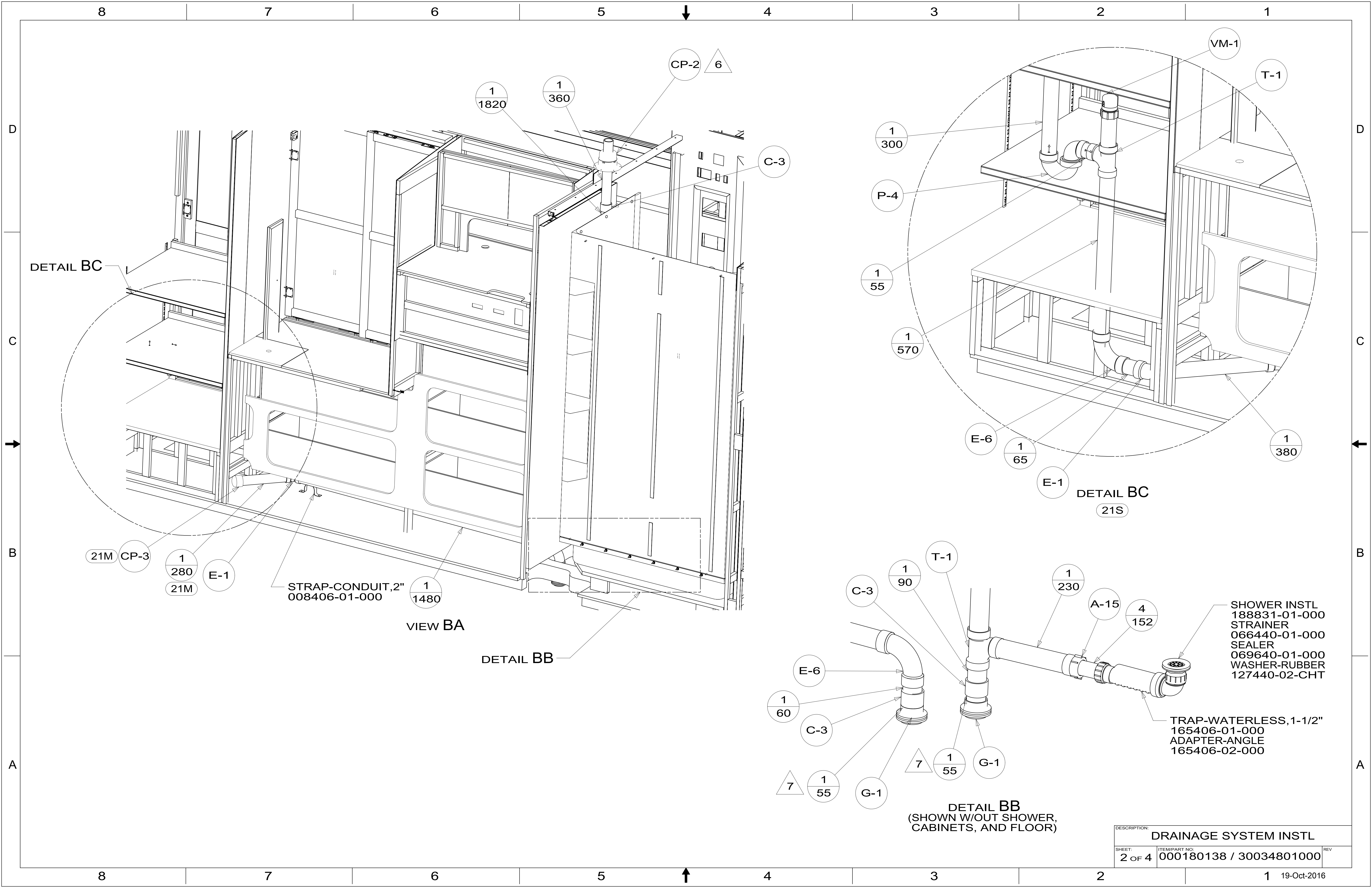
NOTES:

- 21S WASHER & DRYER-PAIR
- 21M WASHER/DRYER PREP
- 1B1 CODES/STANDARDS-USA
- 265 CODES/STANDARDS-CSA/CMVSS



DSNR:		ALL DIMENSIONS ARE IN MILLIMETERS	
DIFTR:		MATERIAL:	
UNSPECIFIED TOLERANCES:			
WHOLE DIM (X)	3		
ONE-PLACE (X.X)	1.5		
TWO-PLACE (X.XX)	0.50		
ANGLE	1°		
REFER TO ES0018 FOR FASTENER TIGHTENING GUIDELINES		WEIGHT: (LBS)	FIRST USED: (REF)
DESCRIPTION: DRAINAGE SYSTEM INSTL			
SHEET:	ITEM/PART NO.:	REV	
1 OF 4	000180138 / 30034801000		

X-X
FOR DRAINAGE CALLOUTS SEE DWG NO. 116229-01-000



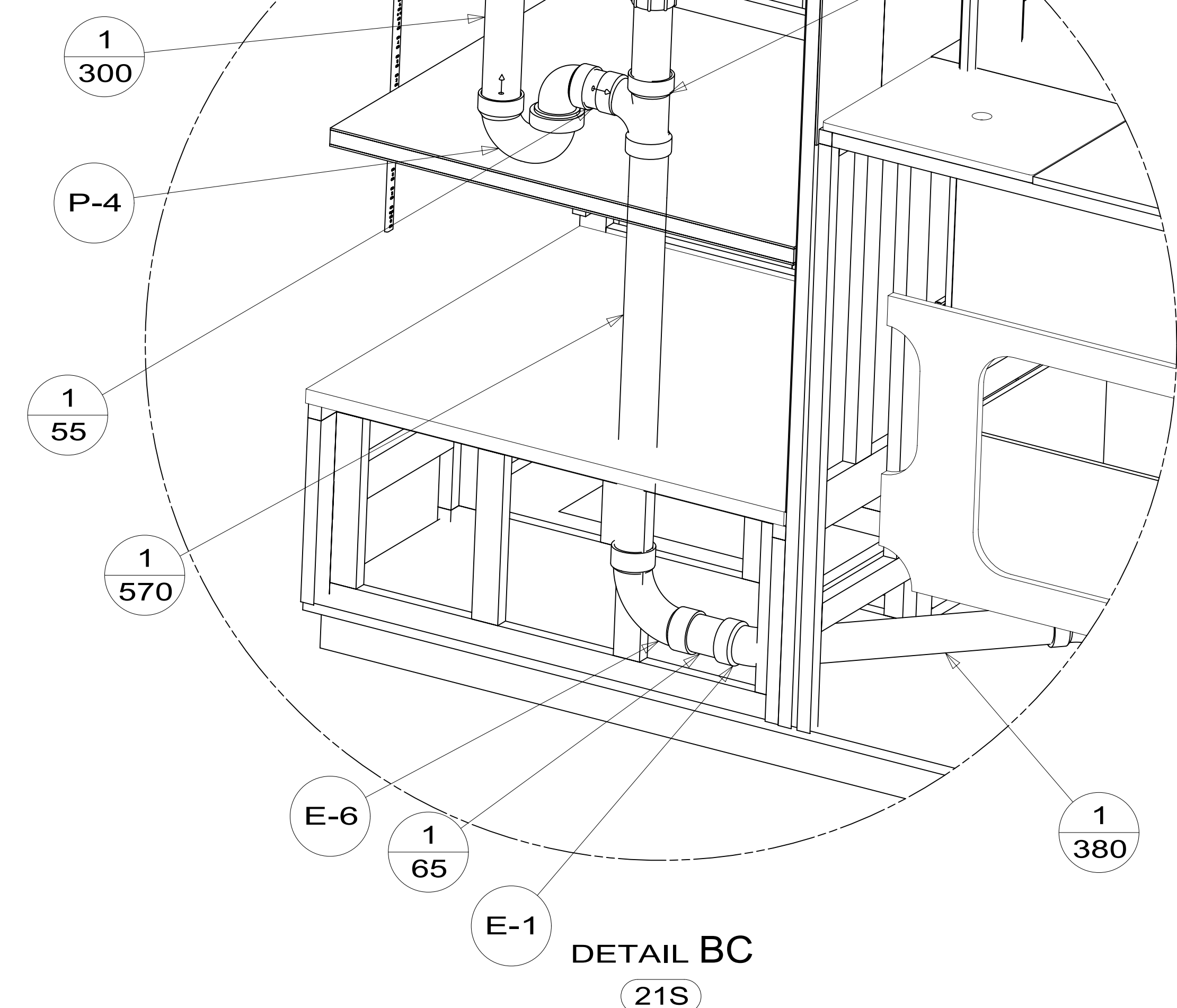
DETAIL BC

21M CP-3
 1 280
 21M E-1

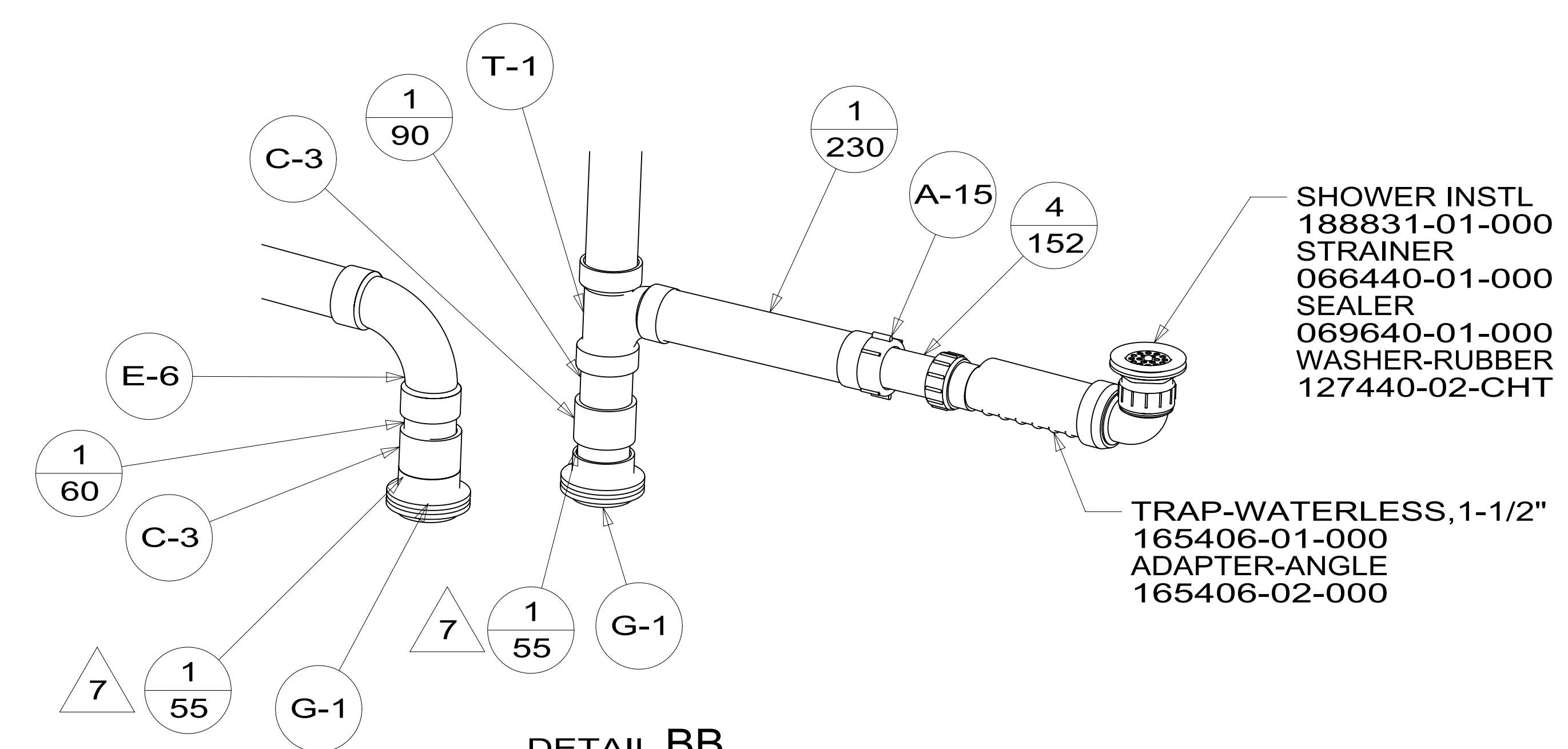
STRAP-CONDUIT, 2"
 008406-01-000

VIEW BA

DETAIL BB



DETAIL BC
 21S

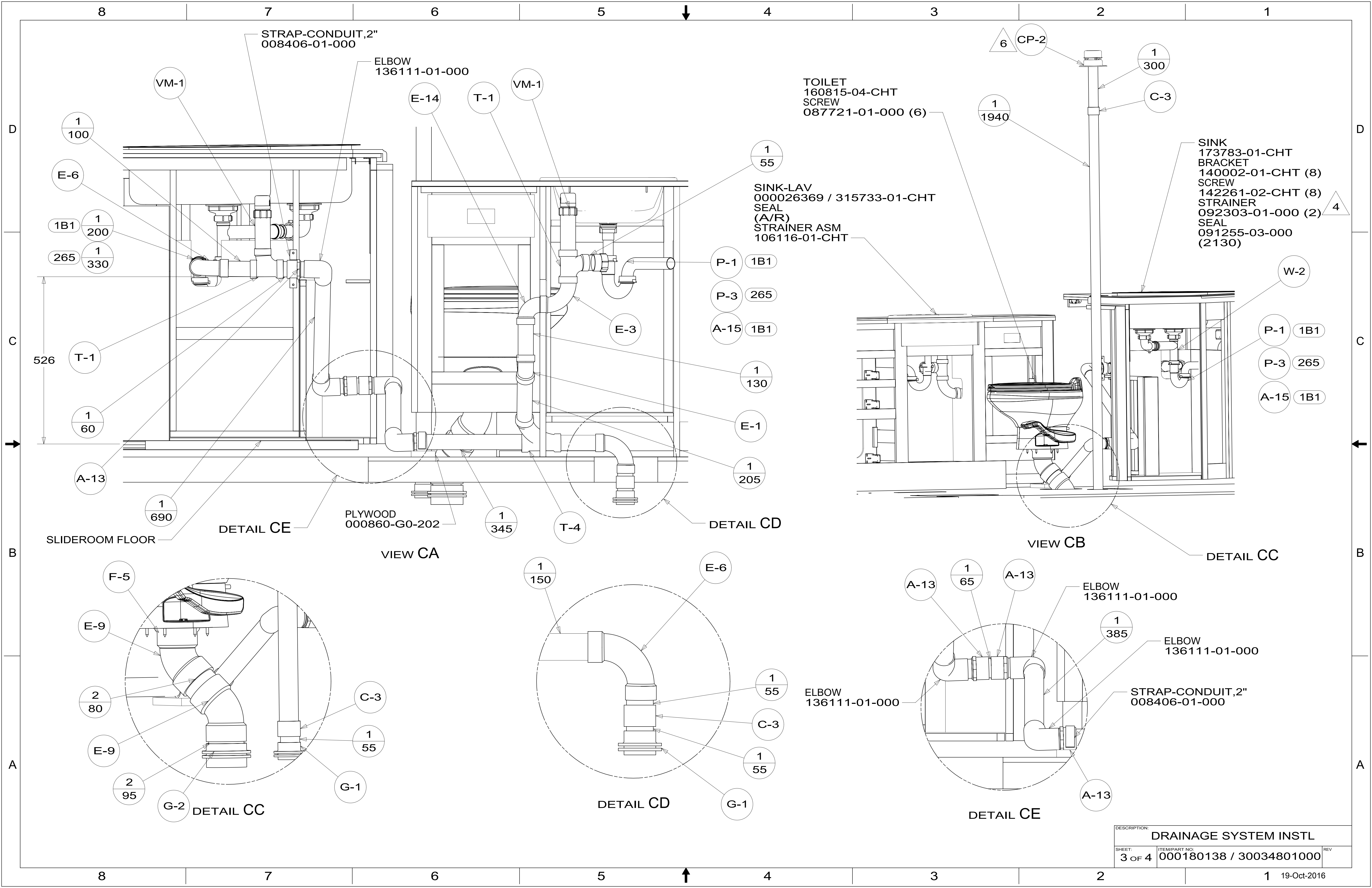


DETAIL BB
 (SHOWN W/OUT SHOWER,
 CABINETS, AND FLOOR)

SHOWER INSTL
 188831-01-000
 STRAINER
 066440-01-000
 SEALER
 069640-01-000
 WASHER-RUBBER
 127440-02-CHT

TRAP-WATERLESS, 1-1/2"
 165406-01-000
 ADAPTER-ANGLE
 165406-02-000

DESCRIPTION:		
DRAINAGE SYSTEM INSTL		
SHEET:	ITEM/PART NO.:	REV
2 OF 4	000180138 / 30034801000	



STRAP-CONDUIT, 2"
008406-01-000

ELBOW
136111-01-000

TOILET
160815-04-CHT
SCREW
087721-01-000 (6)

SINK-LAV
000026369 / 315733-01-CHT
SEAL
(A/R)
STRAINER ASM
106116-01-CHT

SINK
173783-01-CHT
BRACKET
140002-01-CHT (8)
SCREW
142261-02-CHT (8)
STRAINER
092303-01-000 (2)
SEAL
091255-03-000
(2130)

- 1 100
- E-6
- 1B1 1 200
- 265 1 330

- 1 55
- P-1 1B1
- P-3 265
- A-15 1B1

- 1 1940
- W-2
- P-1 1B1
- P-3 265
- A-15 1B1

- 526
- T-1
- 1 60
- A-13
- 1 690

- 1 130
- E-1
- 1 205

SLIDEROOM FLOOR

DETAIL CE

PLYWOOD
000860-G0-202

- 1 345

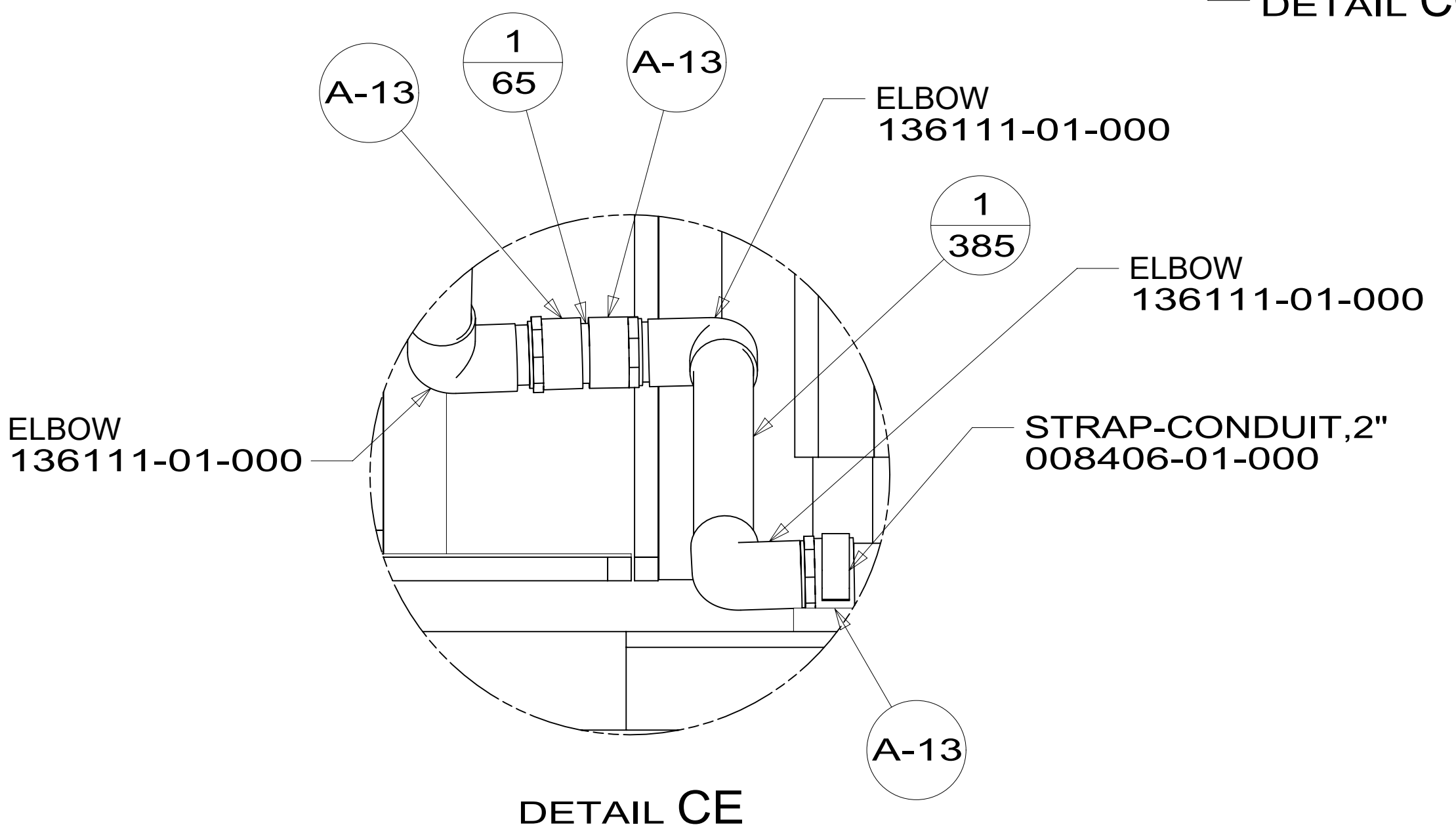
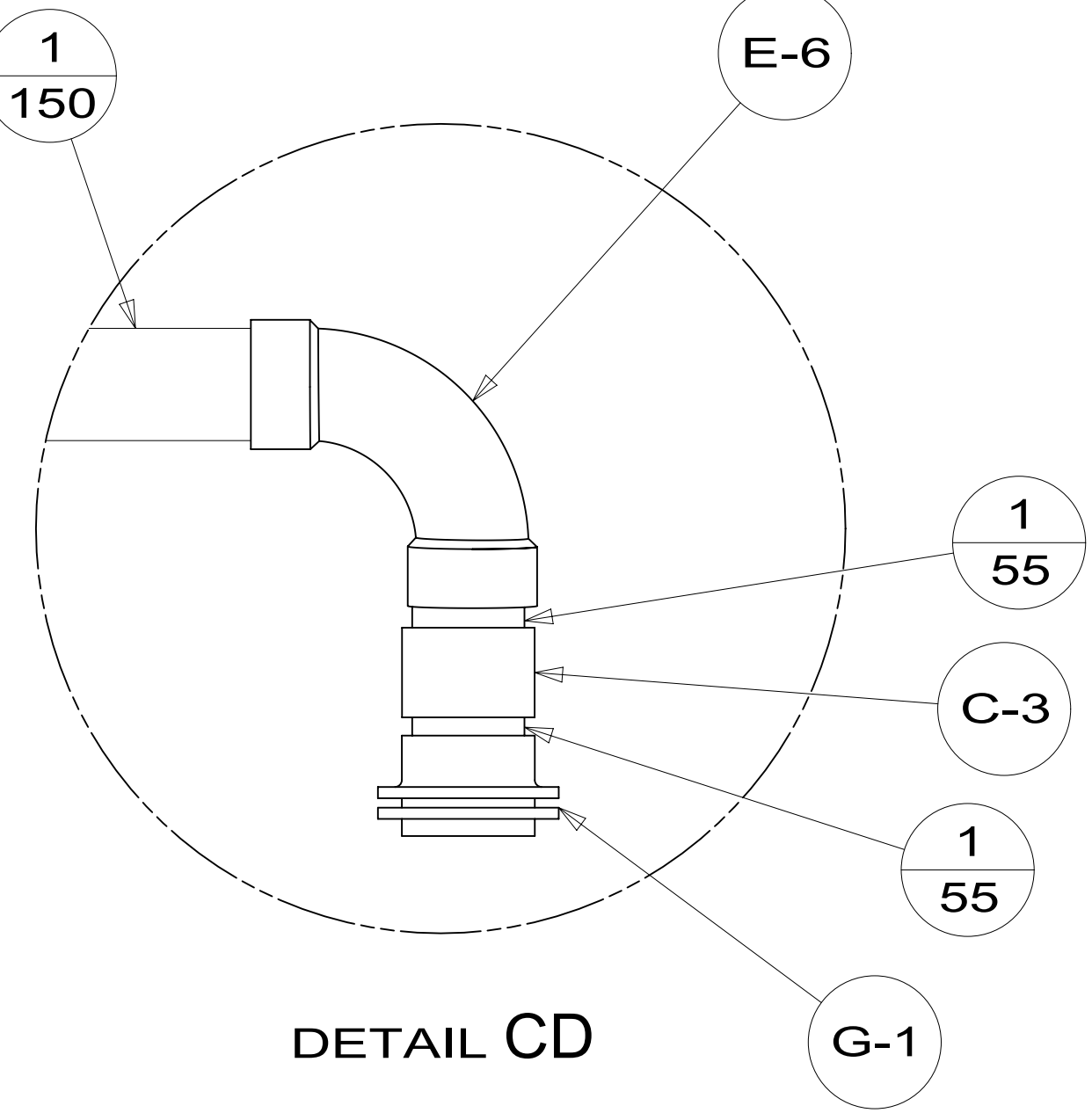
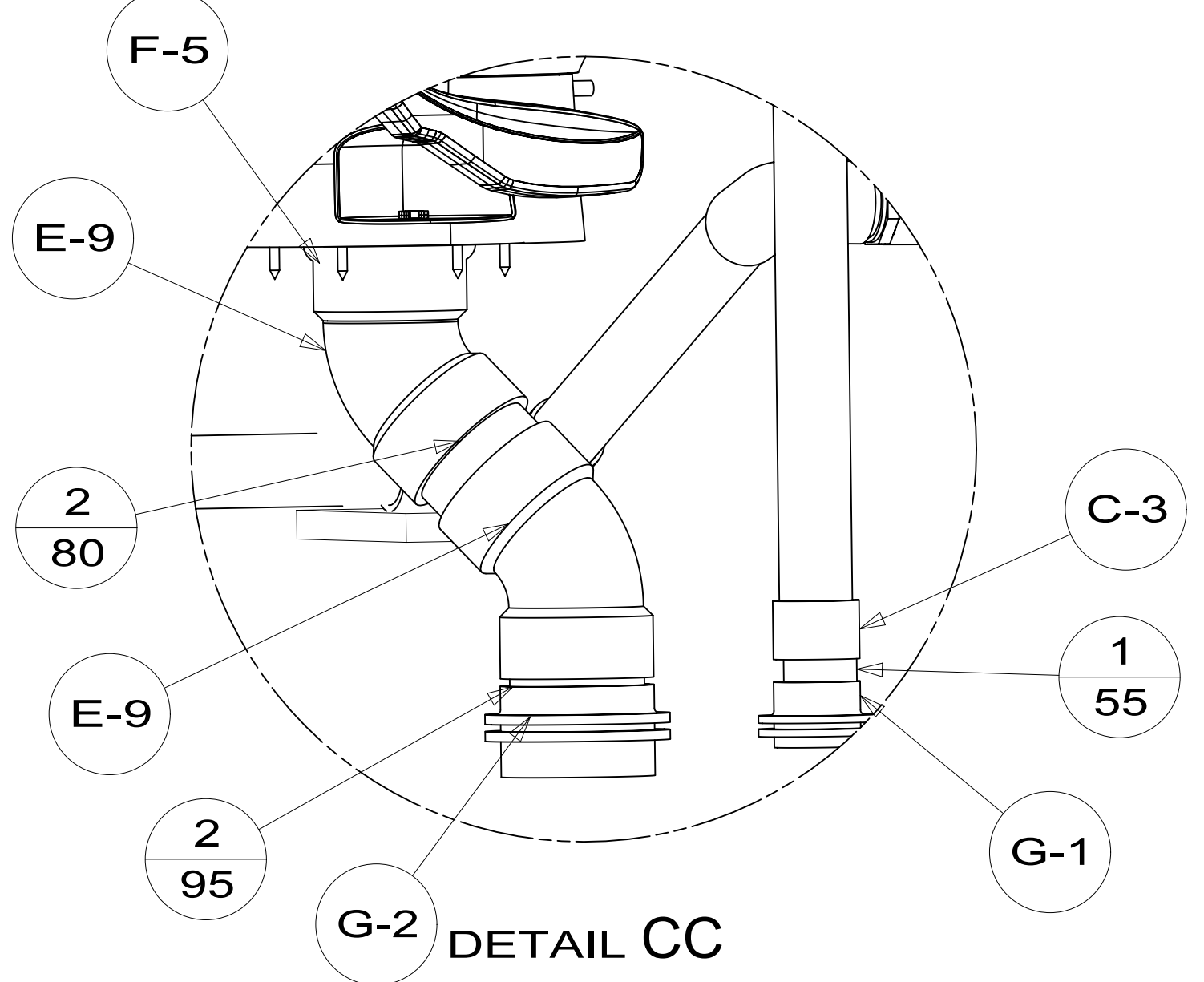
T-4

DETAIL CD

VIEW CA

VIEW CB

DETAIL CC



DESCRIPTION:		
DRAINAGE SYSTEM INSTL		
SHEET:	ITEM/PART NO.:	REV
3 OF 4	000180138 / 30034801000	

