

8 7 6 5 4 3 2 1

D

C

B

A

8 7 6 5 4 3 2 1

3 TO SUNVISOR SHADE
6 BUTT SPLICES
HHK-BLK
HHL-BLK/GRY
HHM-BLK
HHN-BLK/GRY
KE-BRN (2)

45B 6 PIN HSG TO ROOF

12 PIN HSG TO WIRE ASM-LOFT BED

WIRE ASM-BED LIFT
187662-02-000
187662-03-000

8 7 45B

2 PIN HSG TO WIRE ASM-IP, MAIN 45B

2 PIN HOUSING TO SIDEWALL 45D

TAPE (2) (400MM) 2

READ-4 2 45D

RECEPTACLE-12V 111414-01-000

2 & 6 PIN HOUSING TO RIGHT MIRROR

USB-CHARGER DUAL, DC 188312-01-000

SWITCH-MAP LIGHT 174757-20-CHT
PANEL-SWITCH 174834-01-CHT

2 PIN HOUSING TO WIRE ASM-SIDEWALL, FRONT

FEMALE TERMINALS TO JACKS DOWN LAMP

BREAKER PANEL
DETAIL BA

WIRE ASM-IP, MAIN
000022711 / 314526-01-000

EA

3.4 & 6 PIN HOUSINGS TO LEVELING SYSTEM CONTROLS

TO RELAYS

RING TERMINAL (6) TO GROUND BOLT

DETAIL CA

579 BUTT SPLICE (2) TO CB PREP
DETAIL AA

6 & 2 PIN HOUSING TO LEFT MIRROR

4 PIN HSG TO WIRE ASM-HEADLAMP

GROMMET 23942-02-000

45D 3 PIN HOUSING TO SIDEWALL

45B 3 PIN HSG TO BED LIFT

FAN DEFROSTER 122856-01-000 (2)
SCREW G39-08-16E (6)
BUTT SPLICE TO AUX FANS
LE-GRN
LF-YEL
XW-BLK

SPEAKER 171547-01-CHT (2)
SCREW 000G39-08-16U (8)

TO GROUND STUD

2 PIN HOUSING CONNECTS TO WIRE ASM-CLEARANCE FRONT

WIRE ASM-IP, MAIN
LABEL-CB PREP OPTION 104678-01-000

CB POWER PROVISION
YELLOW +12V
WHITE GROUND
COAX ANTENNA
(SEE REVERSE SIDE ALSO)

TO CUSTOMERS CB RADIO WIRING
WHT YEL

DETAIL AA 579

45D LOFT BED - WITHOUT

45B LOFT BED

579 RADIO - CB WIRE PREP

265 CODES/STANDARDS-CSA/CMVSS

1B1 CODES/STANDARDS USA

1B1 265

WINNEBAGO[®]
COPYRIGHT 2016 WINNEBAGO INDUSTRIES, INC.

DSNR: _____

DFFR: _____

UNSPECIFIED TOLERANCES:

WHOLE DIM (X)	3
ONE-PLACE (X.X)	1.5
TWO-PLACE (X.XX)	0.50
ANGLE	1°

MATERIAL: _____

REFER TO ES0018 FOR FASTENER TIGHTENING GUIDELINES

WEIGHT: (LBS) _____

FIRST USED: 16 D-SER

DESCRIPTION: WIRING INSTL-FRONT END

SHEET: 1 OF 10

ITEM/PART NO: 000180134 / 30033901000

REF: _____

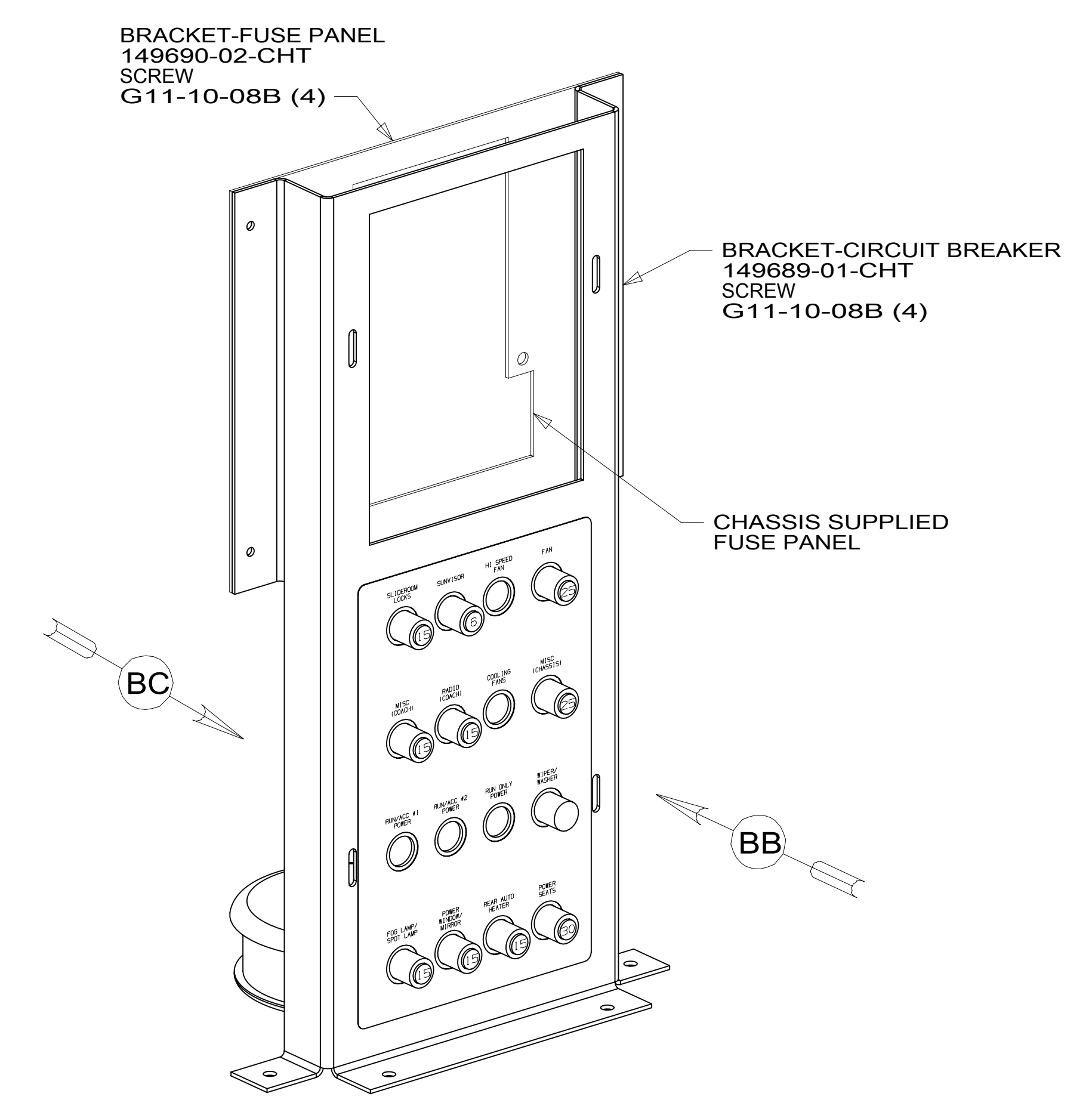
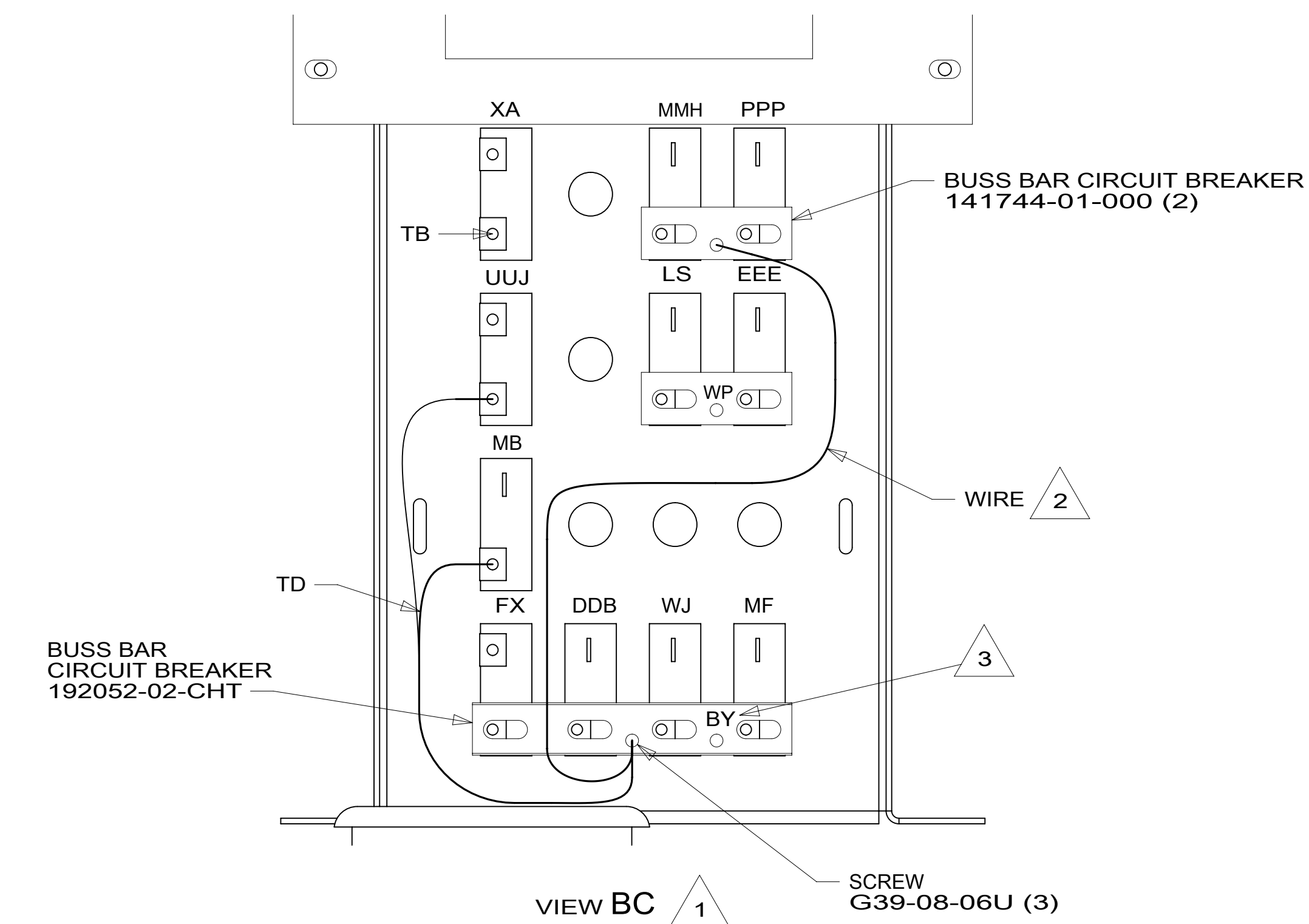
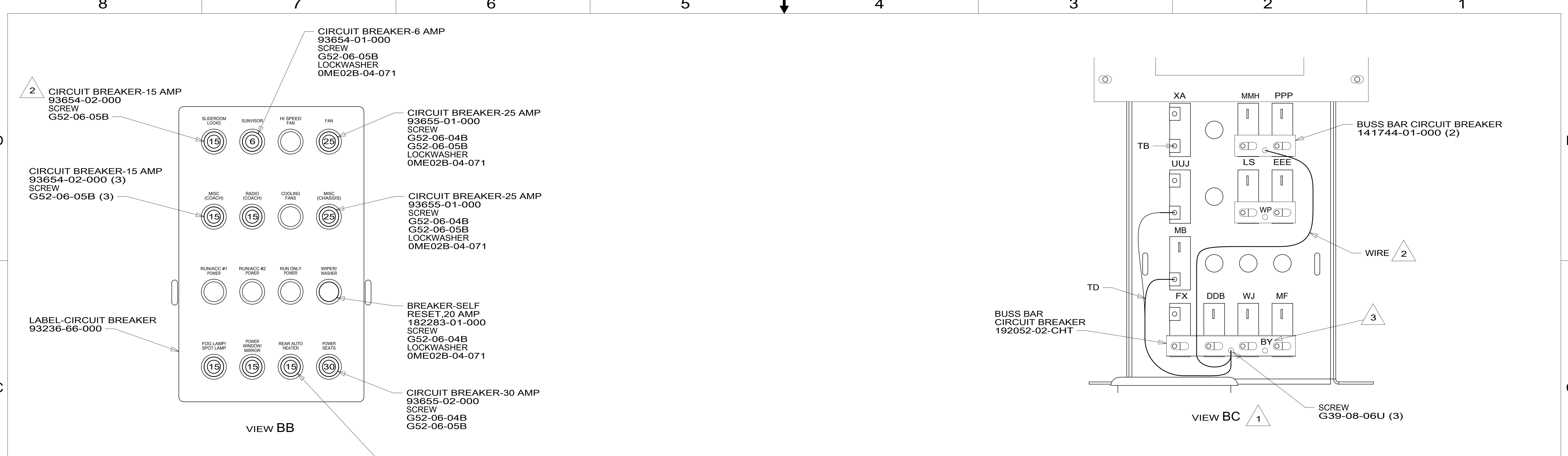
FOR ELECTRICAL TORQUE SPECIFICATIONS SEE DWG NO. 128783-01-000

FOR ELECTRICAL CALLOUTS SEE DWG NO. 121339-01-000

NOTES:

- WINNEBAGO WIRE ASSEMBLIES ARE SHOWN FOR CLARITY.
- USE TAPE 8363-03-000 TO SECURE WIRES IN A-POST.
- CUT VISOR WIRING TO 300MM BEFORE CONNECTING.
- EDGE OF LABEL TO HANG JUST BELOW BOTTOM OF DASH.
- SEE WIRING INSTL-TV/DVD FOR ADDITIONAL INFORMATION.
- WIRE TIE RECEIVER-SATELLITE RADIO TO DASH RADIO WIRING.
- SEE SHEET 10 FOR ADDITIONAL INFORMATION ON LOFT BED.
- USED WITH D30A.
- USED WITH D33C, D35G & D36Z.

1 20-Sep-2016



NOTES:

3 CIRCUIT IS PART OF WIRE ASM-CHASSIS.

2 USED ON D33C AND D35G FOR THE SLIDEOUT LOCK.

1 ALL CIRCUITS ARE IN WIRE ASM-IP, MAIN UNLESS OTHERWISE NOTED.

FOR ELECTRICAL TORQUE SPECIFICATIONS SEE DWG NO. 128783-01-000

FOR ELECTRICAL CALLOUTS SEE DWG NO. 121339-01-000

265	CODES/STANDARDS-CSA/CMVSS
1B1	CODES/STANDARDS USA
1B1	265
DESCRIPTION: WIRING INSTL-FRONT END	
SHEET: 2 OF 10	ITEM/PART NO: 000180134 / 30033901000
REV 1 20-Sep-2016	

8 7 6 5 4 3 2 1

2 3 LIGHT ASM-INDICATOR,RED
190682-01-000
LABEL-JACKS DOWN
133533-01-CHT

RELAY
63912-02-000 (5)
SCREW
G11-08-08U (5)

DETAIL DA

4 PIN HSG
TO WIRE ASM-HEADLAMP

DETAIL DB

FORD DIAGNOSTIC CONNECTOR
NUT-SPEED
40921-03-000
SCREW
G-11-10-10U (2)

DETAIL CA

- 3 WIRING FROM LEVELING SYSTEM. SEE LEVELING SYSTEM INSTL FOR ADDITIONAL INFORMATION.
- 2 CONNECT POSITIVE WIRE TO TERMINAL MARKED WITH "RED".
- 1 LEAVE 675±50MM OF WIRE FOR SEAT TRAVEL.

NOTES:

265 CODES/STANDARDS-CSA/CMVSS

1B1 CODES/STANDARDS USA

1B1 265

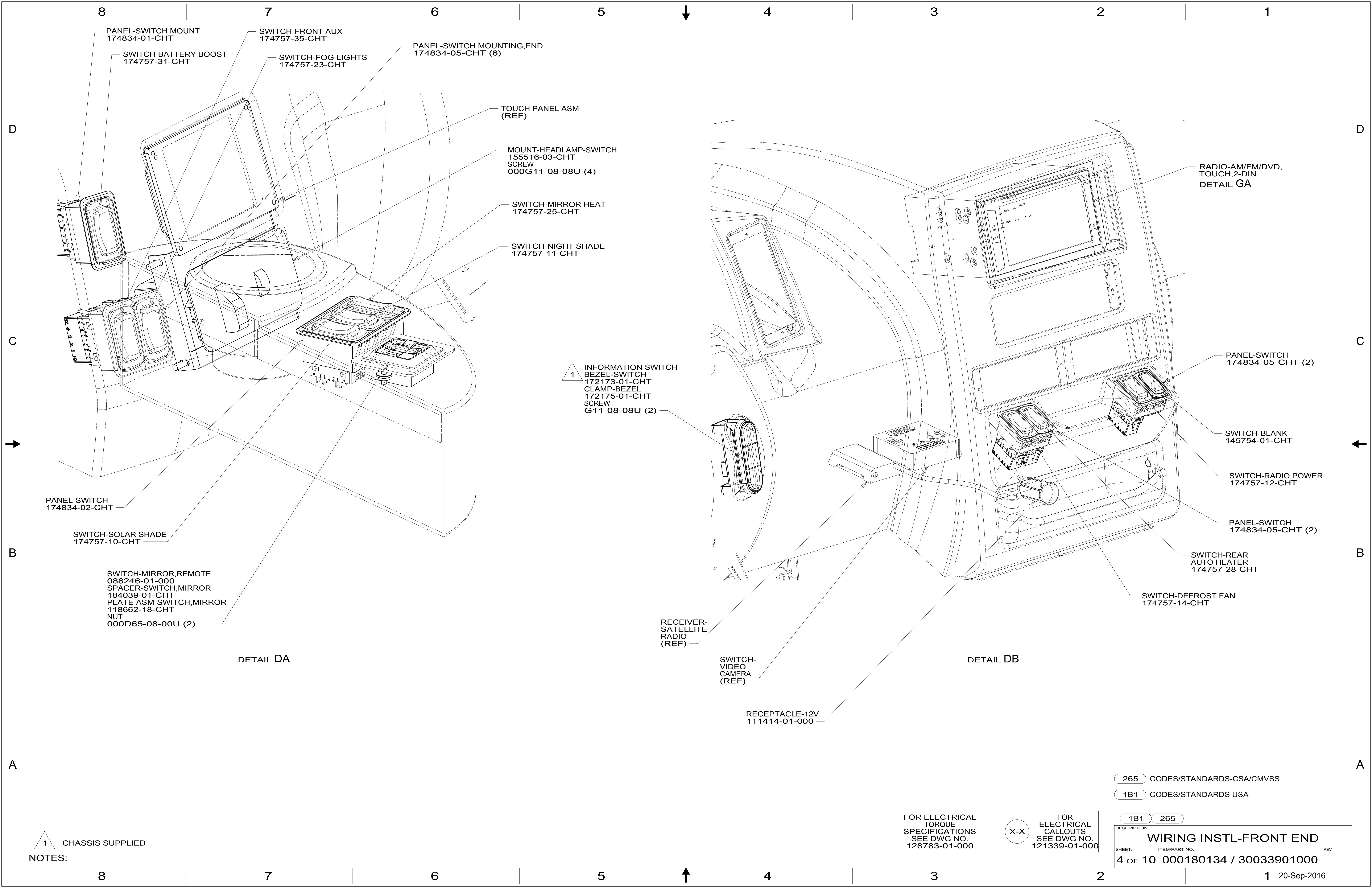
FOR ELECTRICAL TORQUE SPECIFICATIONS SEE DWG NO. 128783-01-000

FOR ELECTRICAL CALLOUTS SEE DWG NO. 121339-01-000

DESCRIPTION:
WIRING INSTL-FRONT END

SHEET: 3 OF 10 ITEM/PART NO: 000180134 / 30033901000 REV

8 7 6 5 4 3 2 1 20-Sep-2016



8 PANEL-SWITCH MOUNT
174834-01-CHT

7 SWITCH-FRONT AUX
174757-35-CHT

6 PANEL-SWITCH MOUNTING,END
174834-05-CHT (6)

SWITCH-BATTERY BOOST
174757-31-CHT

SWITCH-FOG LIGHTS
174757-23-CHT

TOUCH PANEL ASM
(REF)

MOUNT-HEADLAMP-SWITCH
155516-03-CHT
SCREW
000G11-08-08U (4)

SWITCH-MIRROR HEAT
174757-25-CHT

SWITCH-NIGHT SHADE
174757-11-CHT

RADIO-AM/FM/DVD,
TOUCH,2-DIN
DETAIL GA

PANEL-SWITCH
174834-02-CHT

SWITCH-SOLAR SHADE
174757-10-CHT

SWITCH-MIRROR,REMOTE
088246-01-000
SPACER-SWITCH,MIRROR
184039-01-CHT
PLATE ASM-SWITCH,MIRROR
118662-18-CHT
NUT
000D65-08-00U (2)

DETAIL DA

1 INFORMATION SWITCH
BEZEL-SWITCH
172173-01-CHT
CLAMP-BEZEL
172175-01-CHT
SCREW
G11-08-08U (2)

RECEIVER-SATELLITE
RADIO
(REF)

SWITCH-VIDEO
CAMERA
(REF)

RECEPTACLE-12V
111414-01-000

DETAIL DB

PANEL-SWITCH
174834-05-CHT (2)

SWITCH-BLANK
145754-01-CHT

SWITCH-RADIO POWER
174757-12-CHT

PANEL-SWITCH
174834-05-CHT (2)

SWITCH-REAR
AUTO HEATER
174757-28-CHT

SWITCH-DEFROST FAN
174757-14-CHT

1 CHASSIS SUPPLIED

NOTES:

FOR ELECTRICAL
TORQUE
SPECIFICATIONS
SEE DWG NO.
128783-01-000

FOR
ELECTRICAL
CALLOUTS
SEE DWG NO.
121339-01-000

265 CODES/STANDARDS-CSA/CMVSS

1B1 CODES/STANDARDS USA

1B1 265

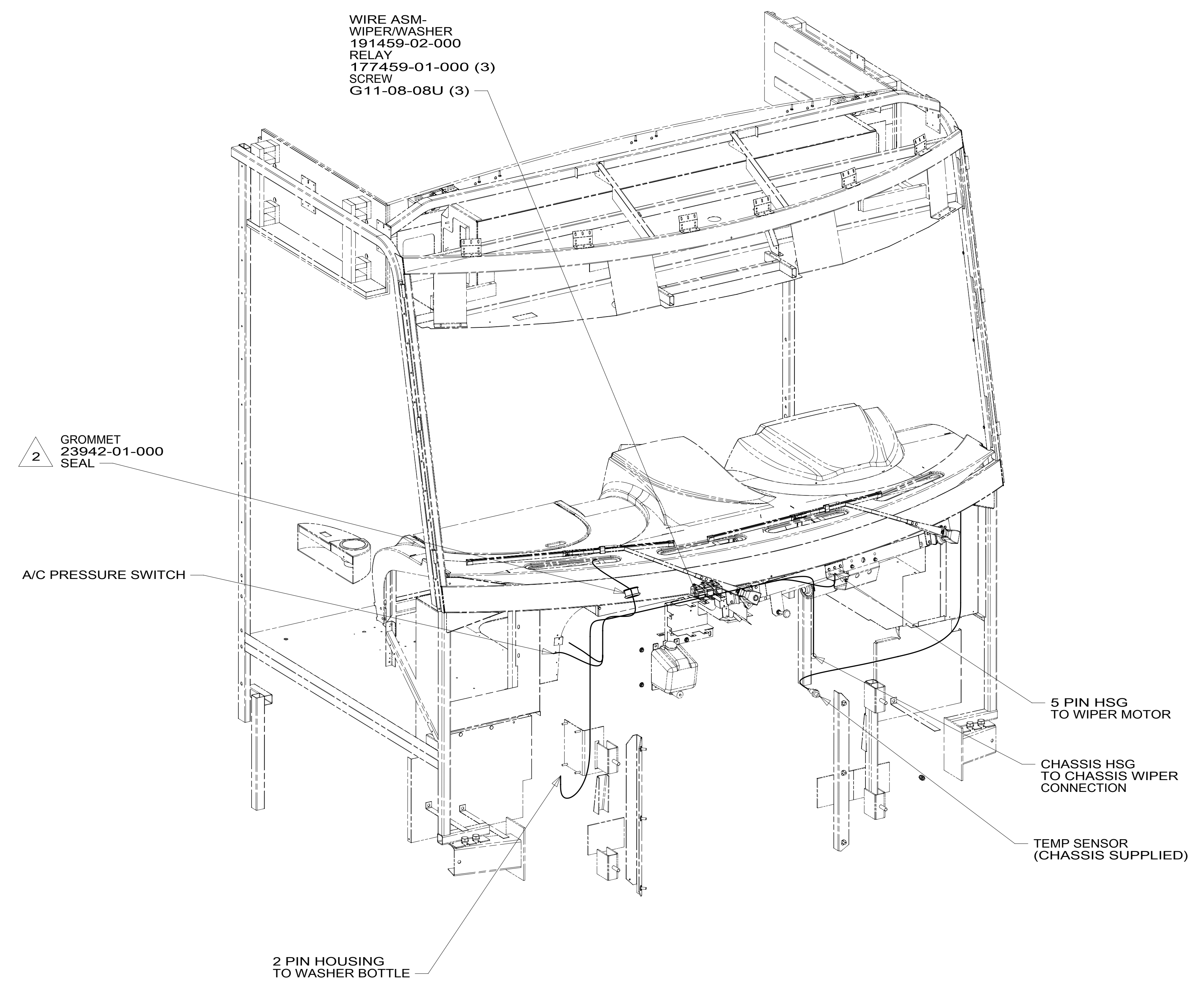
DESCRIPTION:
WIRING INSTL-FRONT END

SHEET: 4 OF 10 ITEM/PART NO: 000180134 / 30033901000 REV

1 20-Sep-2016

8 7 6 5 4 3 2 1

D
C
B
A



DETAIL EA

2 ROUTE WIRES THROUGH HOLE IN STEEL.

1. GATHER ALL EXCESS WIRE AFTER MAKING ALL CONNECTIONS. BUNDLE AND SECURE WITH WIRE TIE 8343-01-000 OR 93147-01-000.

NOTES:

265 CODES/STANDARDS-CSA/CMVSS
1B1 CODES/STANDARDS USA

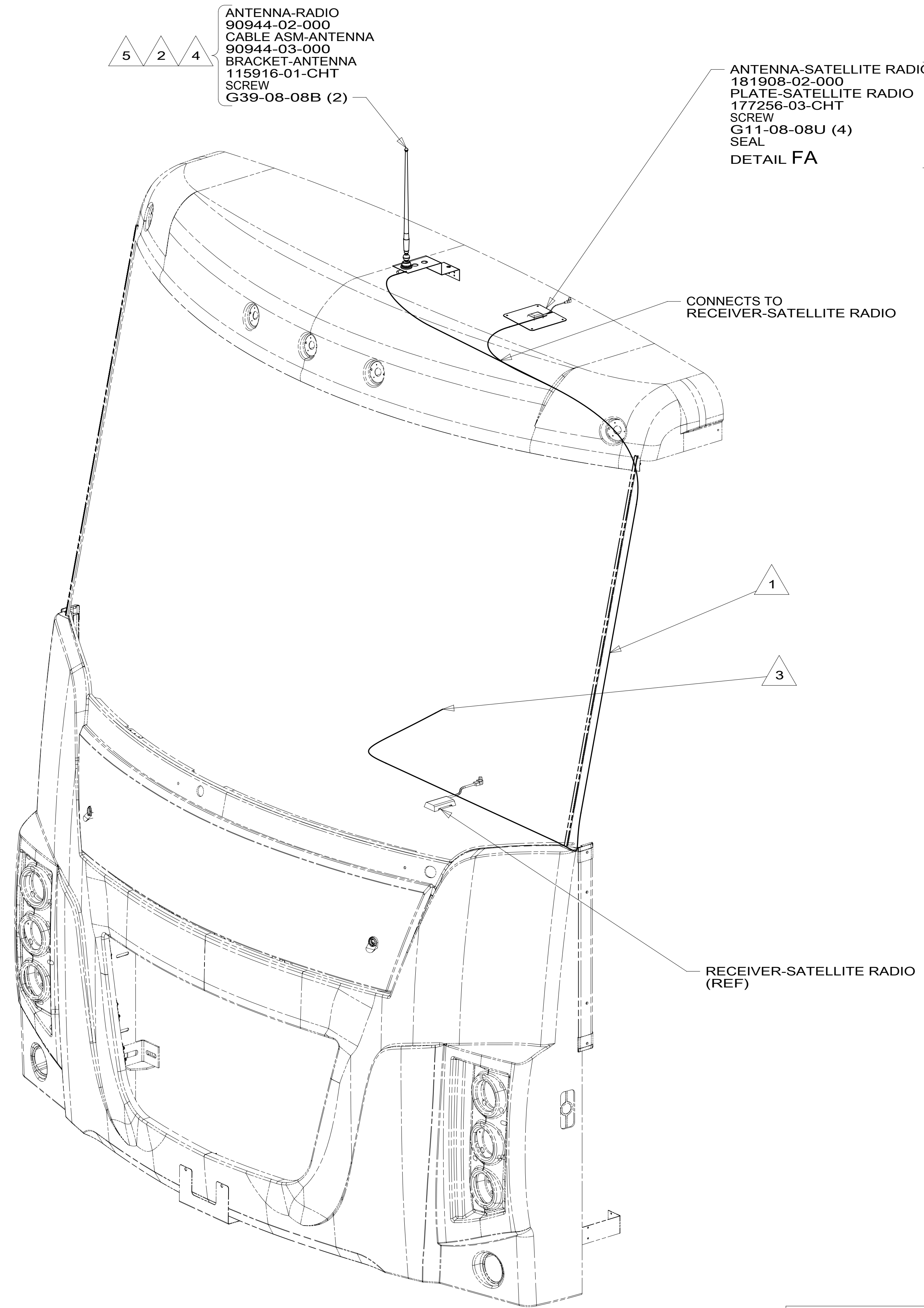
FOR ELECTRICAL TORQUE SPECIFICATIONS SEE DWG NO. 128783-01-000

FOR ELECTRICAL CALLOUTS SEE DWG NO. 121339-01-000

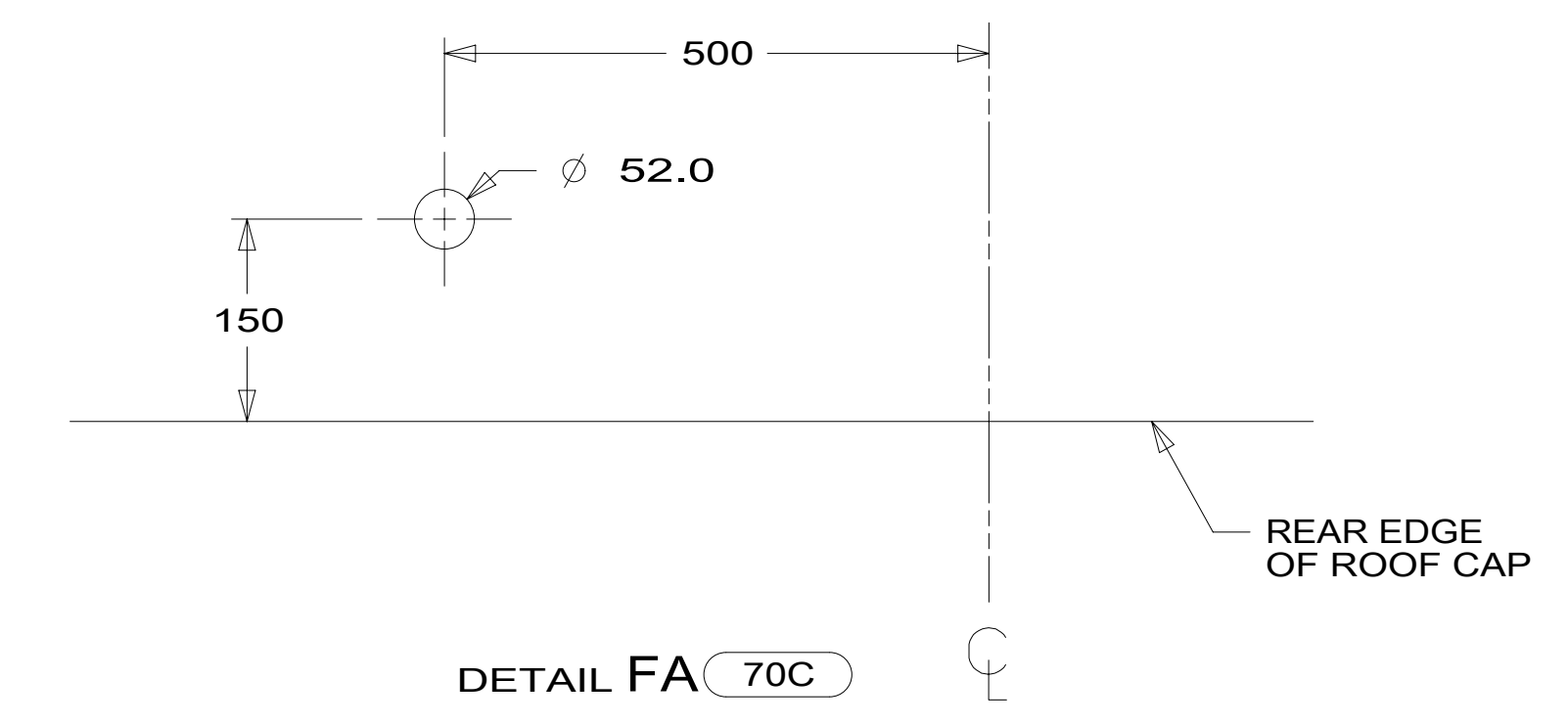
DESCRIPTION:	
1B1 265	
WIRING INSTL-FRONT END	
SHEET:	ITEM/PART NO. REV
5 of 10	000180134 / 30033901000

8 7 6 5 4 3 2 1 20-Sep-2016

8 7 6 5 4 3 2 1



70C 6



- NOTES:
- 6 MOUNT ANTENNA SUCH THAT BASE IS SQUARE W/REAR OF ROOF CAP & HOLE IS DIRECTLY OVER HOLE IN FIBERGLASS. SEAL HOLE IN ROOF CAP, BASE AT SCREWS.
 - 5 REMOVE AND REINSTALL AFTER PAINT.
 - 4 USE HOLE IN BRACKET AS GUIDE TO DRILL 13 DIAMETER HOLE IN FIBERGLASS.
 - 3 TO RADIO.
 - 2 SEAL AROUND ANTENNA BASE.
 - 1 ROUTE CABLE ALONG A-POST, UNDER TRIM COVER.

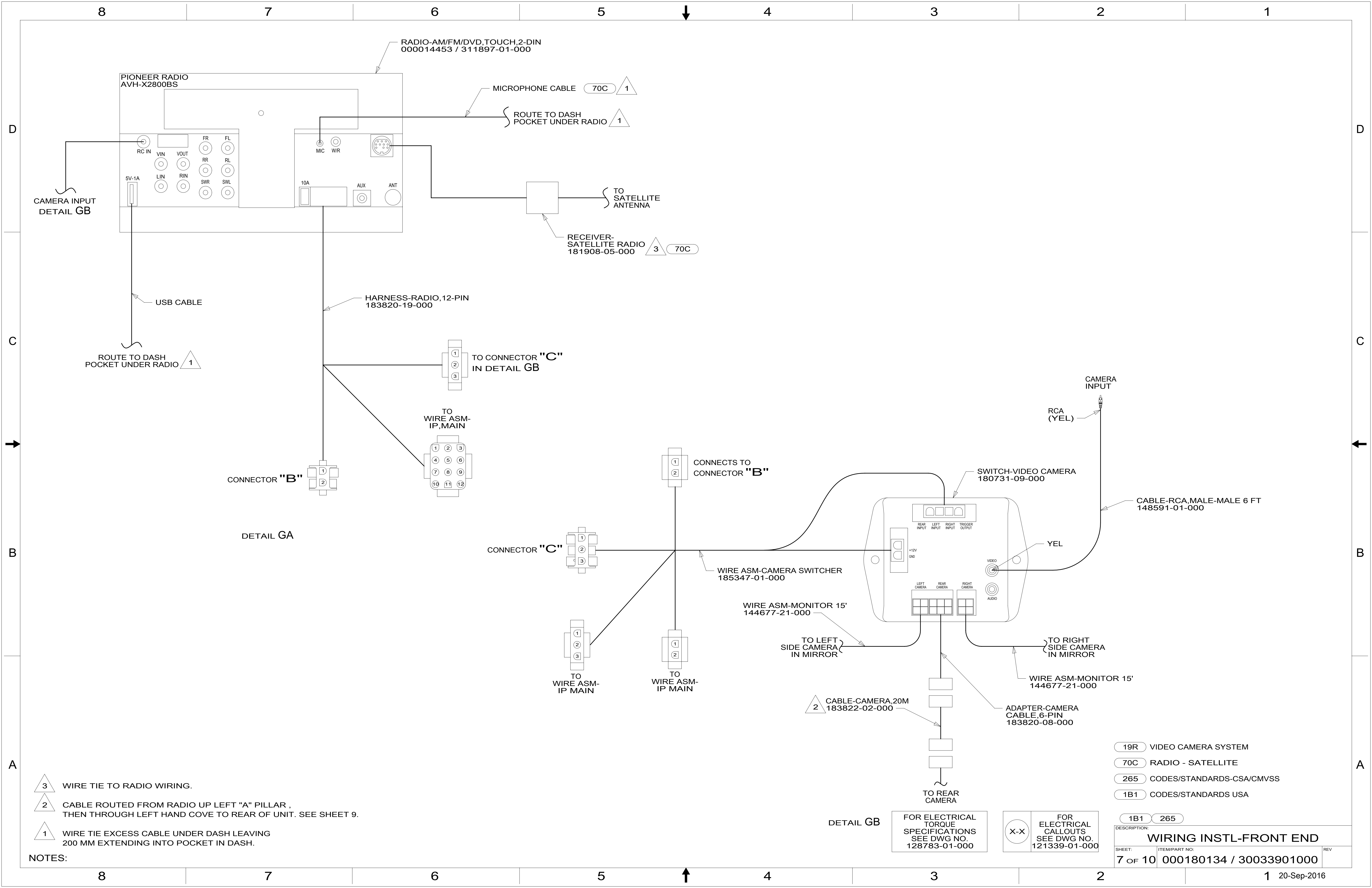
FOR ELECTRICAL TORQUE SPECIFICATIONS SEE DWG NO. 128783-01-000

FOR ELECTRICAL CALLOUTS SEE DWG NO. 121339-01-000

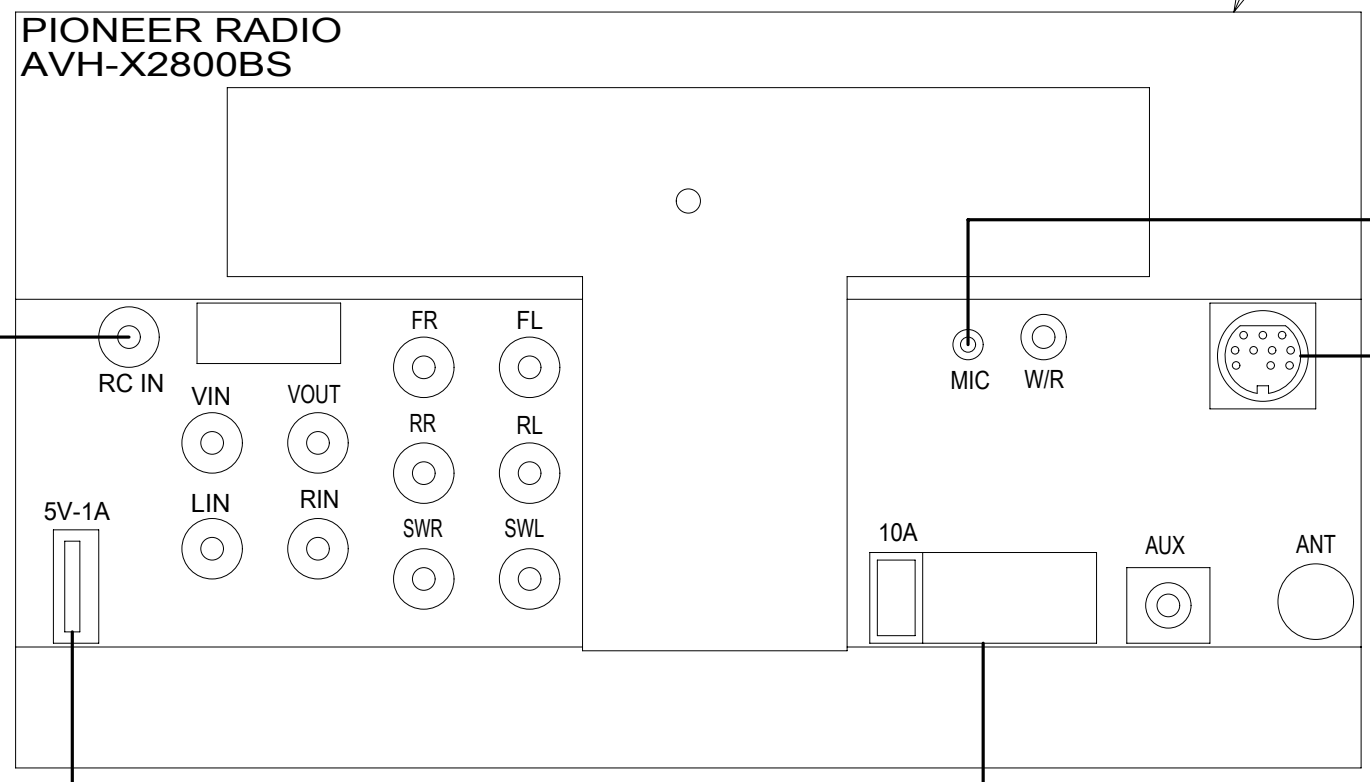
- 70C RADIO - SATELLITE
- 265 CODES/STANDARDS-CSA/CMVSS
- 1B1 CODES/STANDARDS USA

DESCRIPTION:		1B1 265	
WIRING INSTL-FRONT END			
SHEET:	ITEM/PART NO.:	REV	
6 OF 10	000180134 / 30033901000		

8 7 6 5 4 3 2 1 20-Sep-2016



RADIO-AM/FM/DVD, TOUCH, 2-DIN
000014453 / 311897-01-000



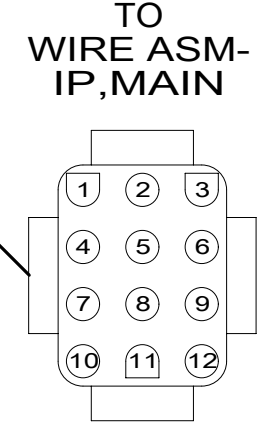
MICROPHONE CABLE 70C 1

ROUTE TO DASH POCKET UNDER RADIO 1

RECEIVER-SATELLITE RADIO
181908-05-000 3 70C

HARNESS-RADIO, 12-PIN
183820-19-000

TO CONNECTOR "C"
IN DETAIL GB



DETAIL GA

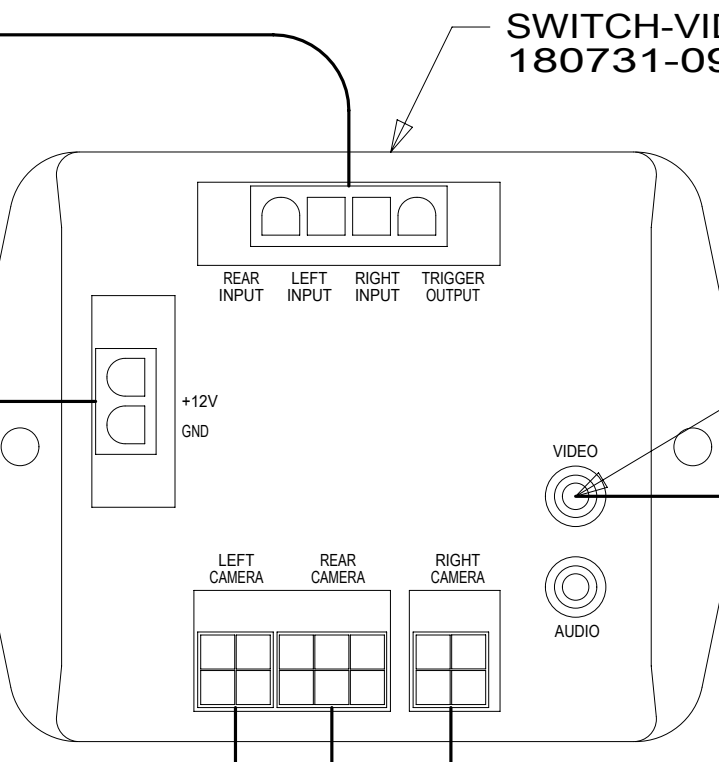
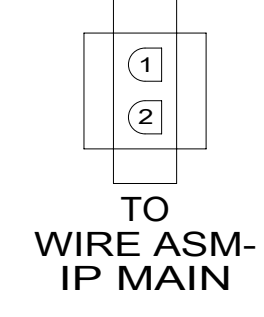
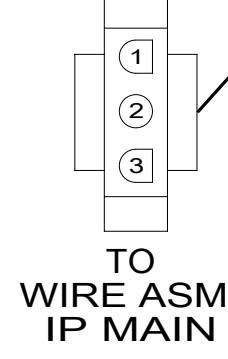
CONNECTS TO
CONNECTOR "B"



WIRE ASM-CAMERA SWITCHER
185347-01-000

WIRE ASM-MONITOR 15'
144677-21-000

TO LEFT
SIDE CAMERA
IN MIRROR



CABLE-RCA, MALE-MALE 6 FT
148591-01-000

WIRE ASM-MONITOR 15'
144677-21-000

ADAPTER-CAMERA
CABLE, 6-PIN
183820-08-000

CABLE-CAMERA, 20M
2 183822-02-000

TO REAR
CAMERA

- NOTES:
- 3 WIRE TIE TO RADIO WIRING.
 - 2 CABLE ROUTED FROM RADIO UP LEFT "A" PILLAR , THEN THROUGH LEFT HAND COVE TO REAR OF UNIT. SEE SHEET 9.
 - 1 WIRE TIE EXCESS CABLE UNDER DASH LEAVING 200 MM EXTENDING INTO POCKET IN DASH.

- 19R VIDEO CAMERA SYSTEM
- 70C RADIO - SATELLITE
- 265 CODES/STANDARDS-CSA/CMVSS
- 1B1 CODES/STANDARDS USA

FOR ELECTRICAL TORQUE SPECIFICATIONS SEE DWG NO. 128783-01-000

FOR ELECTRICAL CALLOUTS SEE DWG NO. 121339-01-000

DESCRIPTION: WIRING INSTL-FRONT END		
SHEET: 7 of 10	ITEM/PART NO: 000180134 / 30033901000	REV
1 20-Sep-2016		

8 7 6 5 4 3 2 1

D

C

B

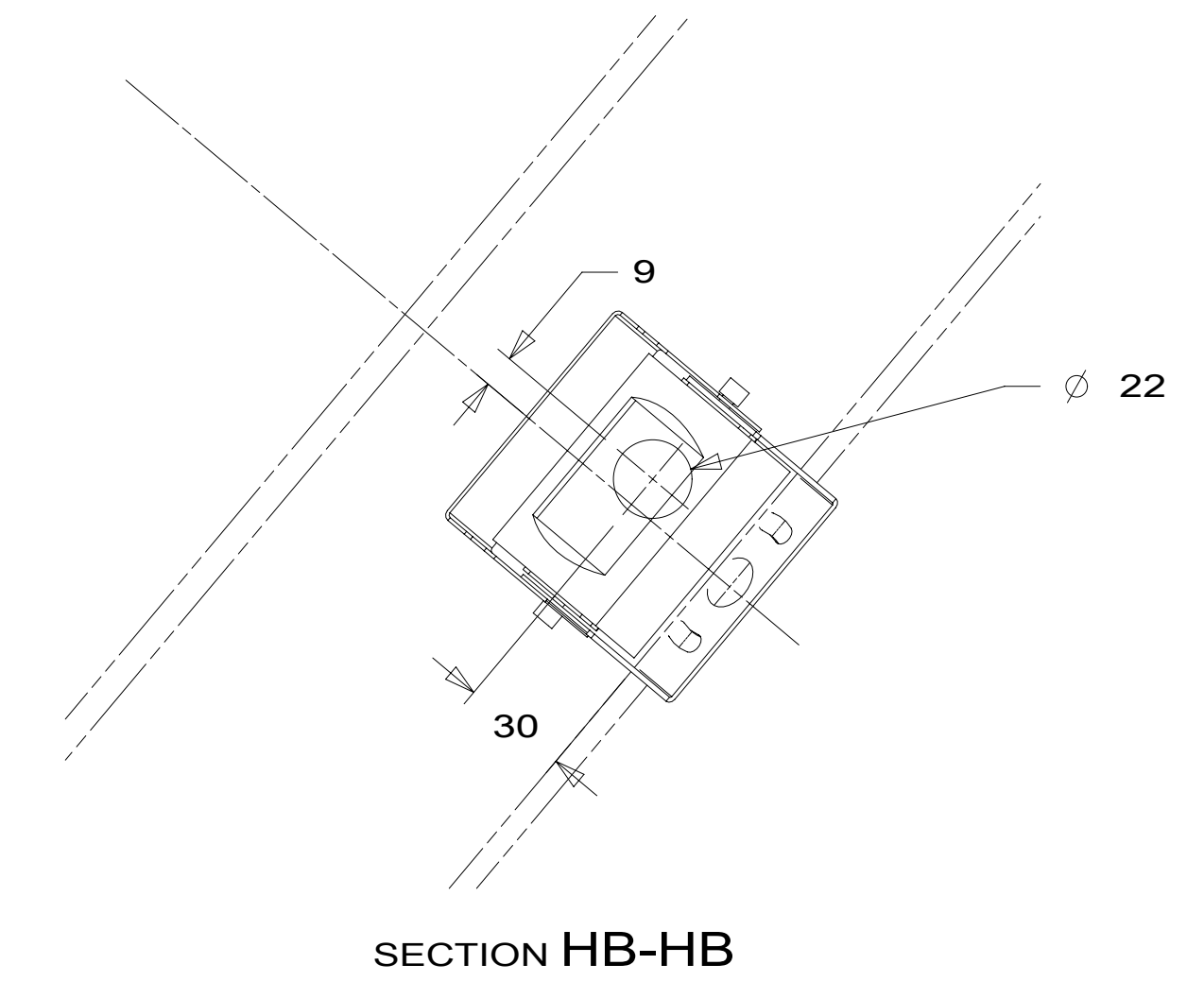
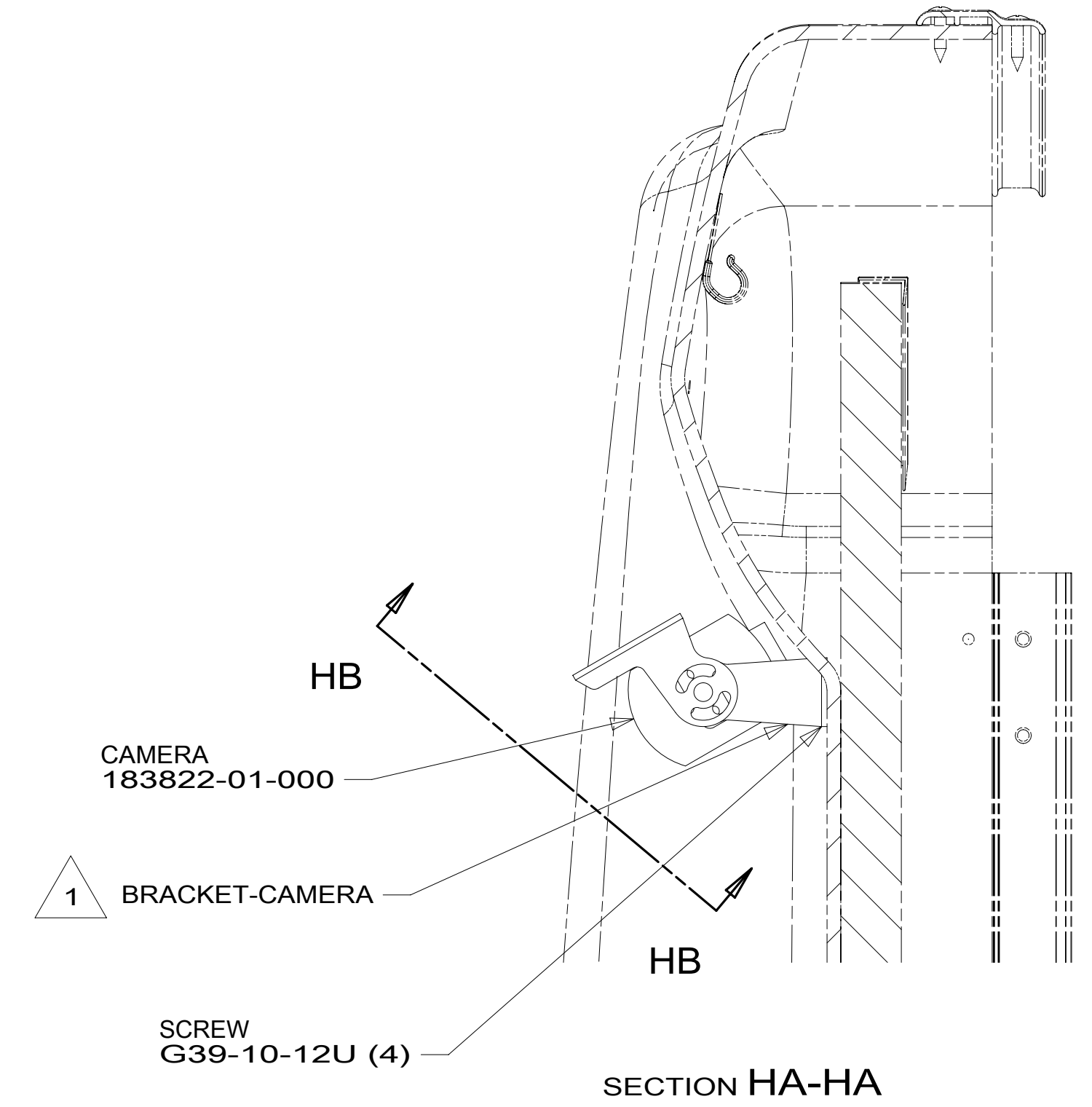
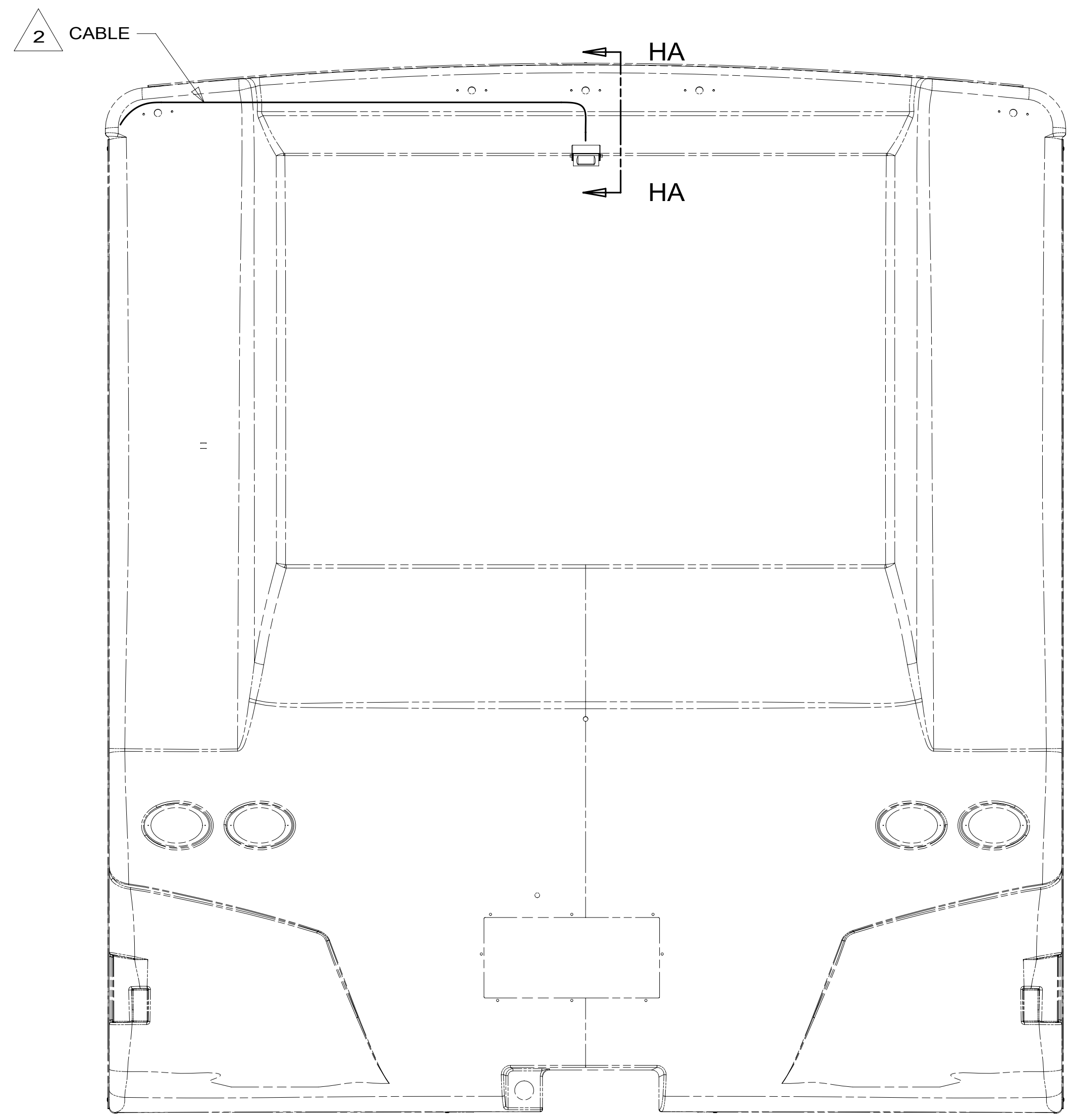
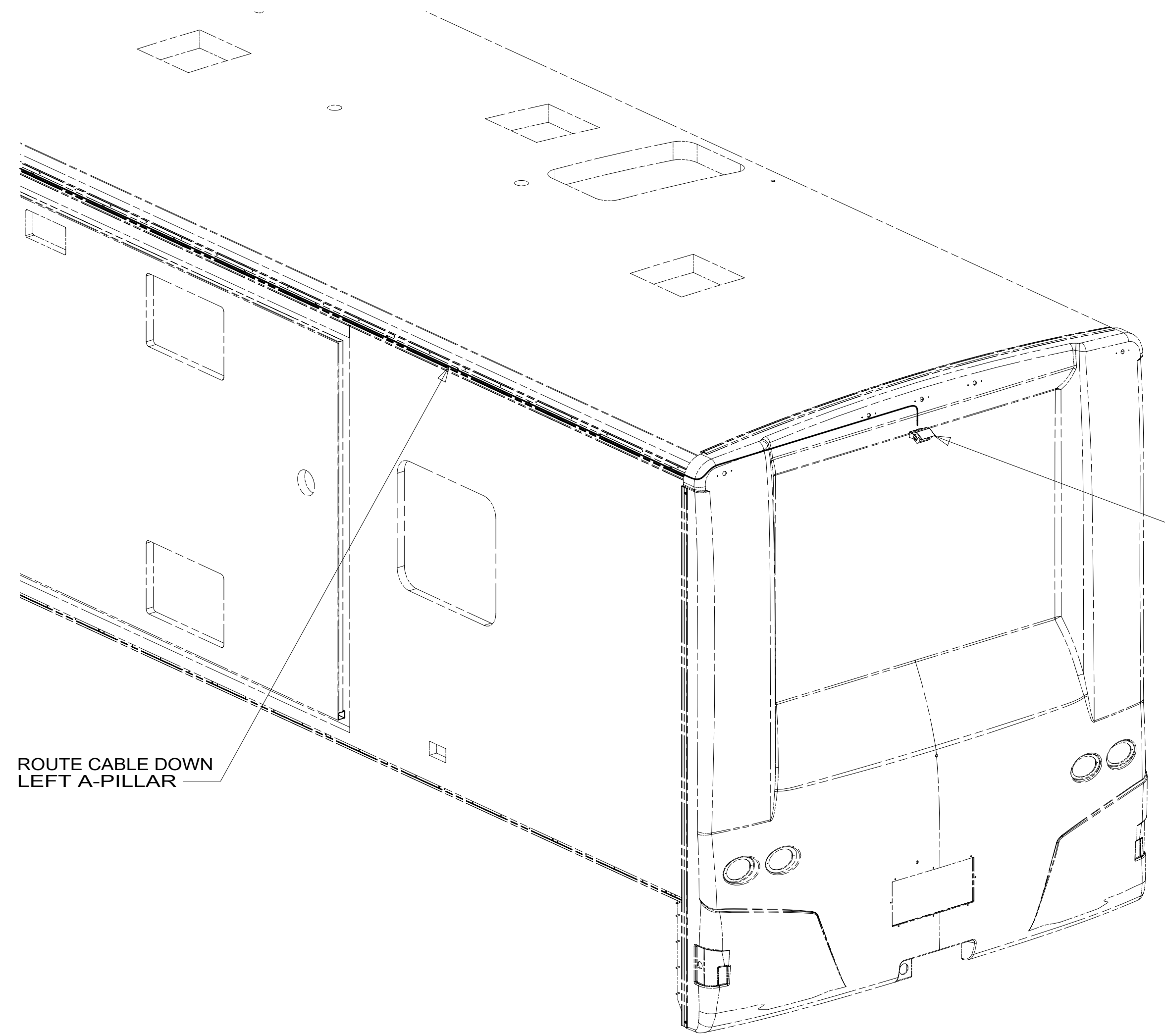
A

D

C

B

A



- NOTES:
- 3 ALIGN CAMERA TO CENTER OF BACKWALL AND ADJUST SO BACKWALL IS JUST VISIBLE.
 - 2 RUN CABLE THRU LEFT-HAND COVE TO REAR OF UNIT.
 - 1 PARTS SUPPLIED WITH CAMERA KIT.

FOR ELECTRICAL TORQUE SPECIFICATIONS SEE DWG NO. 128783-01-000

FOR ELECTRICAL CALLOUTS SEE DWG NO. 121339-01-000

- 265 CODES/STANDARDS-CSA/CMVSS
- 1B1 CODES/STANDARDS USA

DESCRIPTION: 1B1 265
WIRING INSTL-FRONT END

SHEET: 8 OF 10 ITEM/PART NO.: 000180134 / 30033901000 REV

8 7 6 5 4 3 2 1 20-Sep-2016

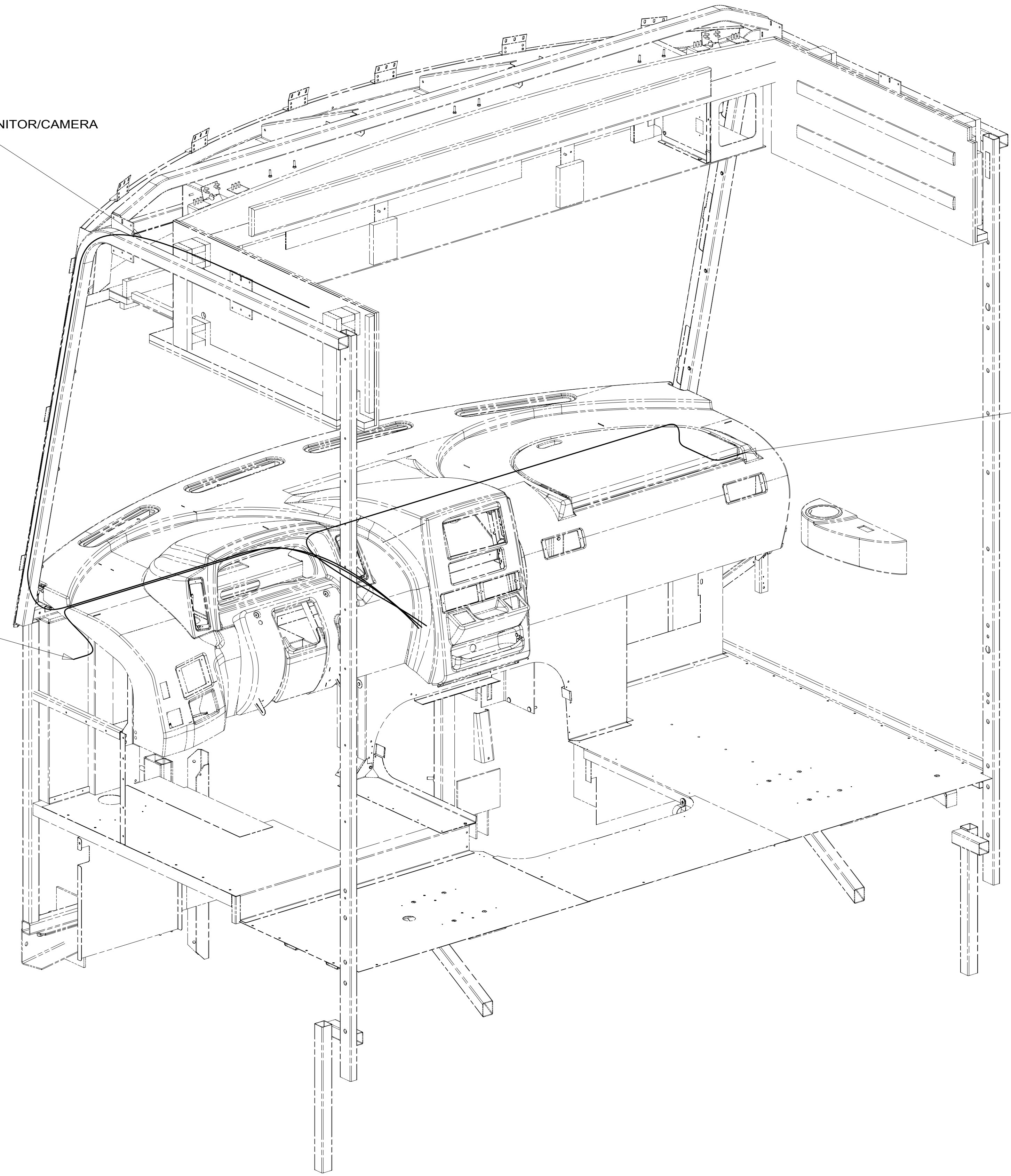
8 7 6 5 4 3 2 1

D
C
B
A

CABLE-MONITOR/CAMERA
(REF)

CABLE-SIDE CAMERA
(REF) 1

1 CABLE-SIDE CAMERA
(REF)



1 CONNECT CAMERA CABLE TO MIRROR.

NOTES:

FOR ELECTRICAL
TORQUE
SPECIFICATIONS
SEE DWG NO.
128783-01-000

FOR
ELECTRICAL
CALLOUTS
SEE DWG NO.
121339-01-000

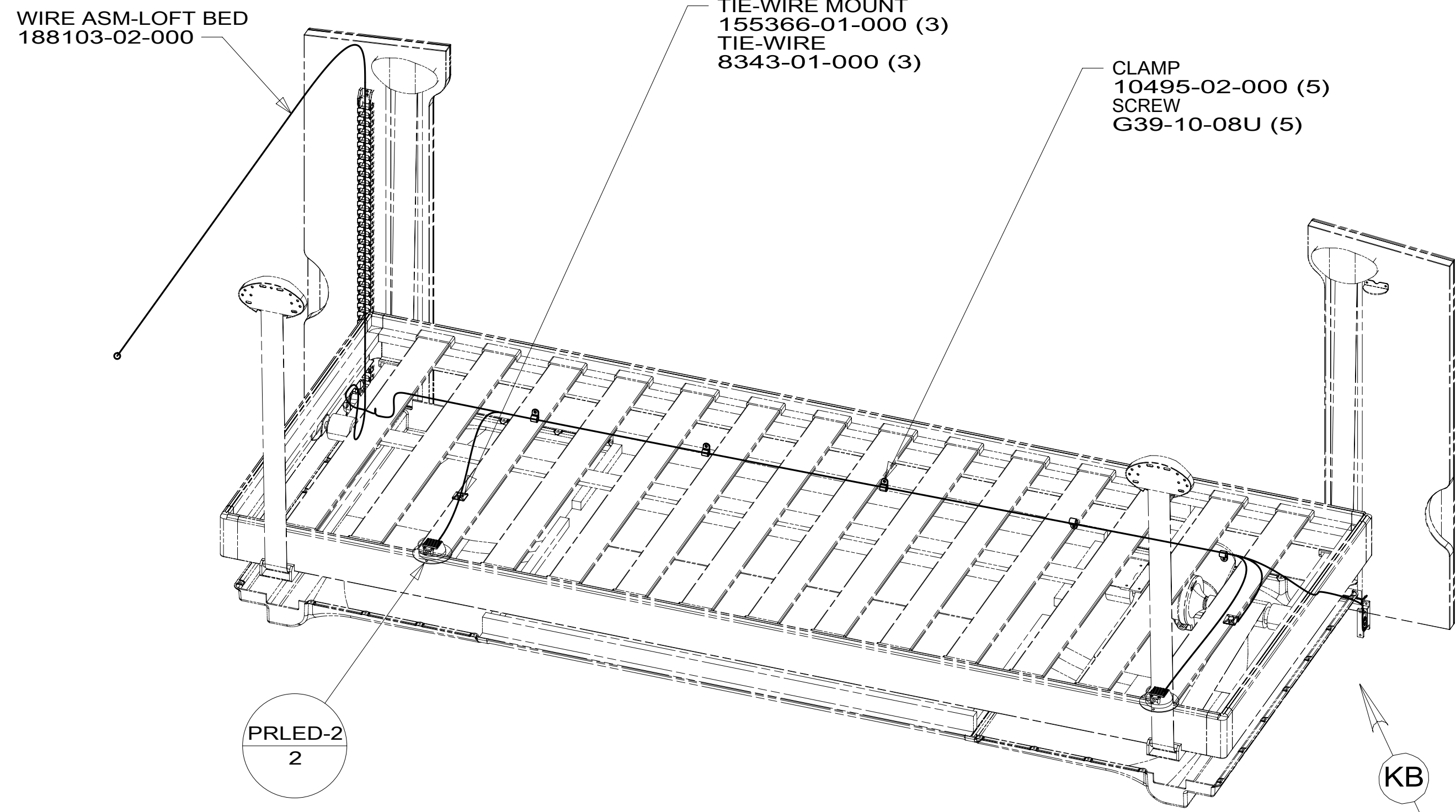
- 265 CODES/STANDARDS-CSA/CMVSS
- 1B1 CODES/STANDARDS USA

1B1 265

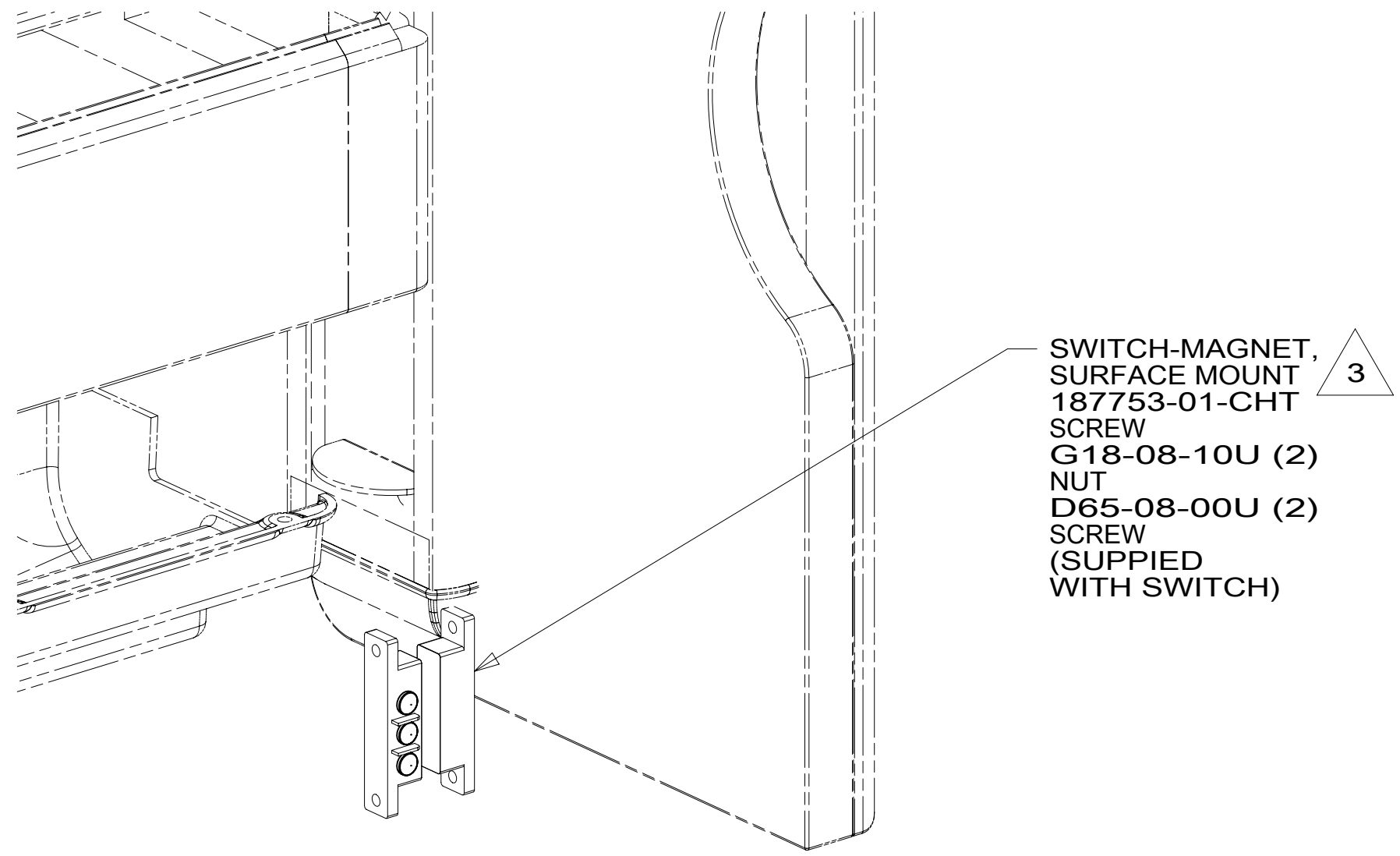
DESCRIPTION:
WIRING INSTL-FRONT END

SHEET: 9 OF 10 ITEM/PART NO: 000180134 / 30033901000 REV

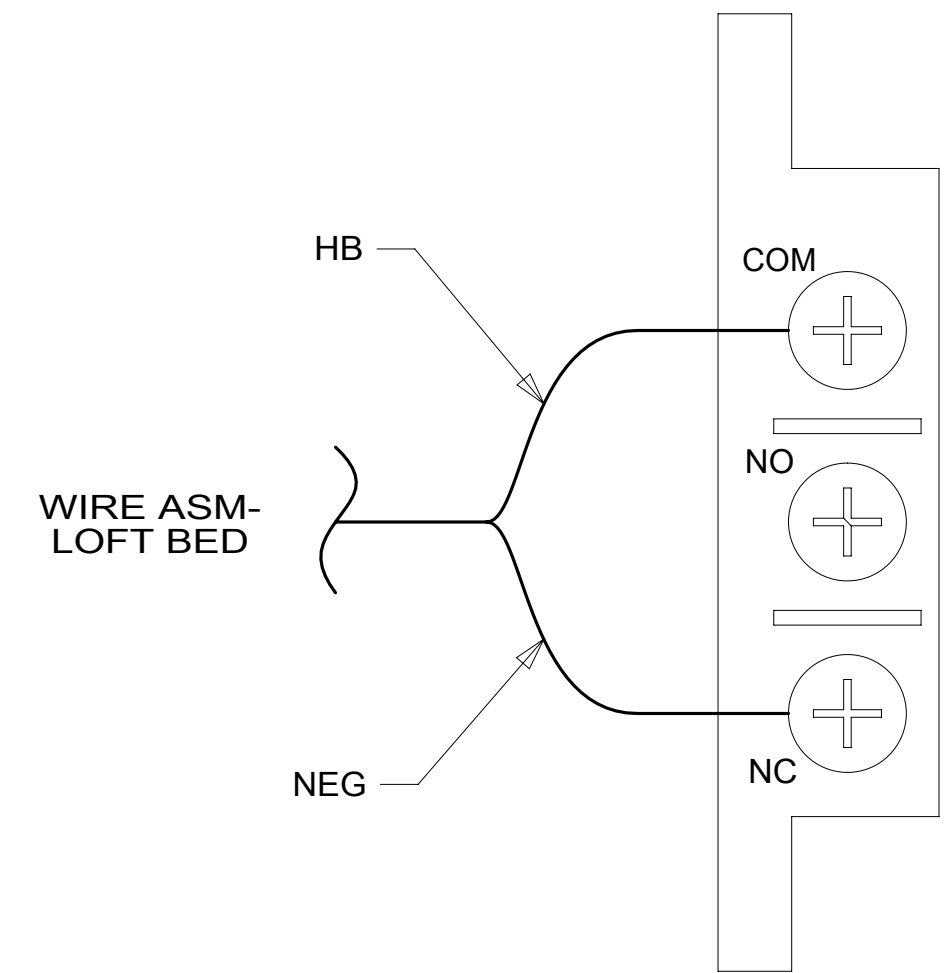
8 7 6 5 4 3 2 1 20-Sep-2016



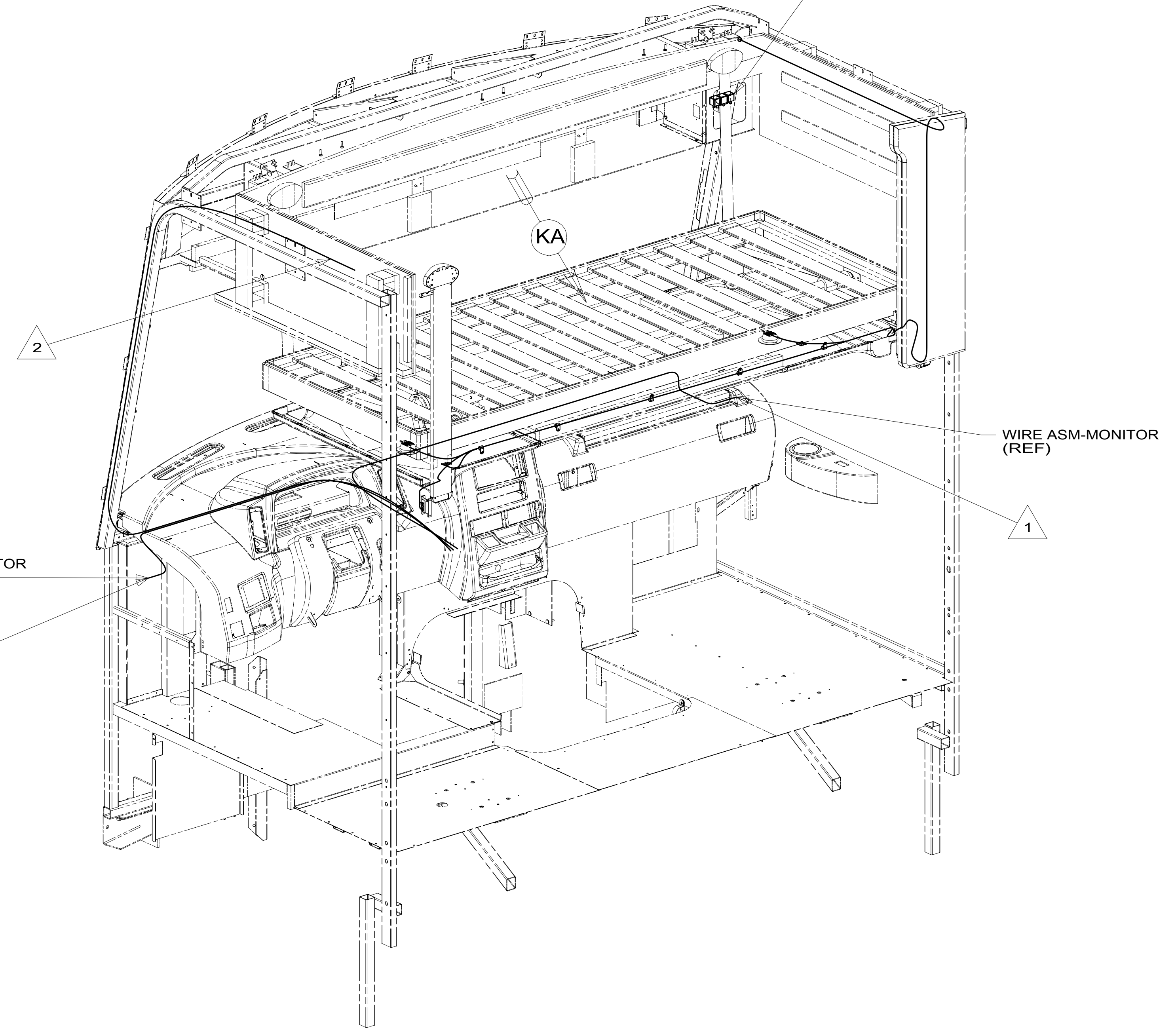
DETAIL KA 45B



DETAIL KB 45B
(SWITCH COVER NOT SHOWN)



DETAIL KC



- NOTES:
- 3 SEE DETAIL KC FOR WIRING CONNECTIONS.
 - 2 RUN CABLE THRU LEFT-HAND COVE TO REAR OF UNIT. SEE SHEET 9.
 - 1 CONNECT CAMERA THRU HOLE IN SIDEWALL, PUSH CONNECTOR BACK THRU SIDEWALL, AND SEAL HOLE.

FOR ELECTRICAL TORQUE SPECIFICATIONS SEE DWG NO. 128783-01-000

FOR ELECTRICAL CALLOUTS SEE DWG NO. 121339-01-000

- 45B LOFT BED
- 265 CODES/STANDARDS-CSA/CMVSS
- 1B1 CODES/STANDARDS USA

DESCRIPTION:		1B1 265
WIRING INSTL-FRONT END		
SHEET:	ITEM/PART NO.:	REV
10 OF 10	000180134 / 30033901000	