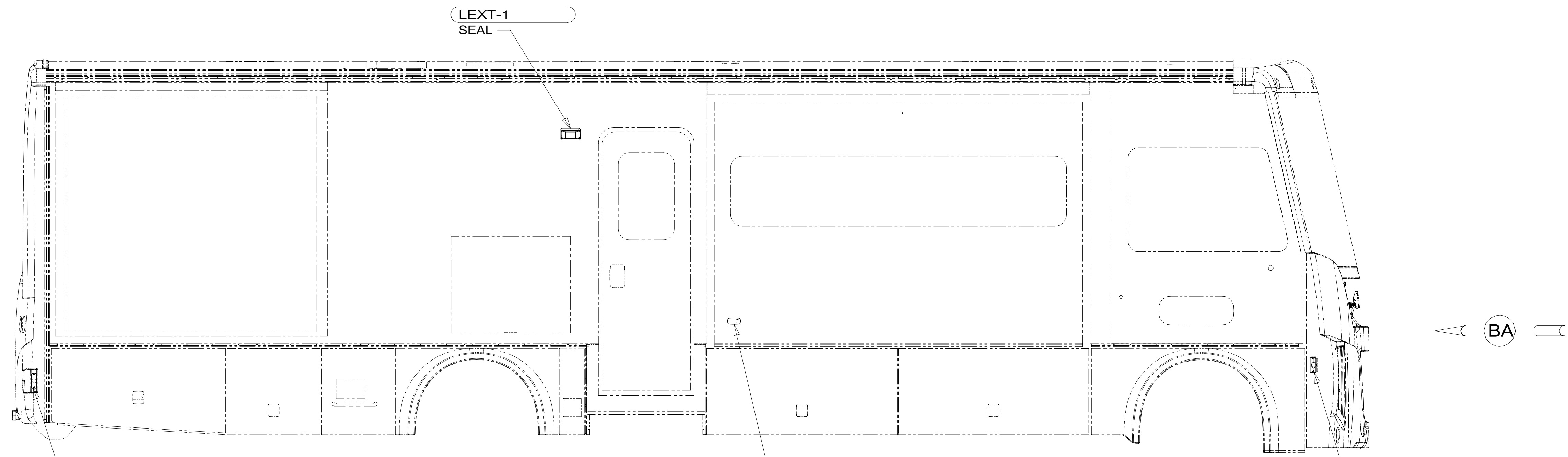


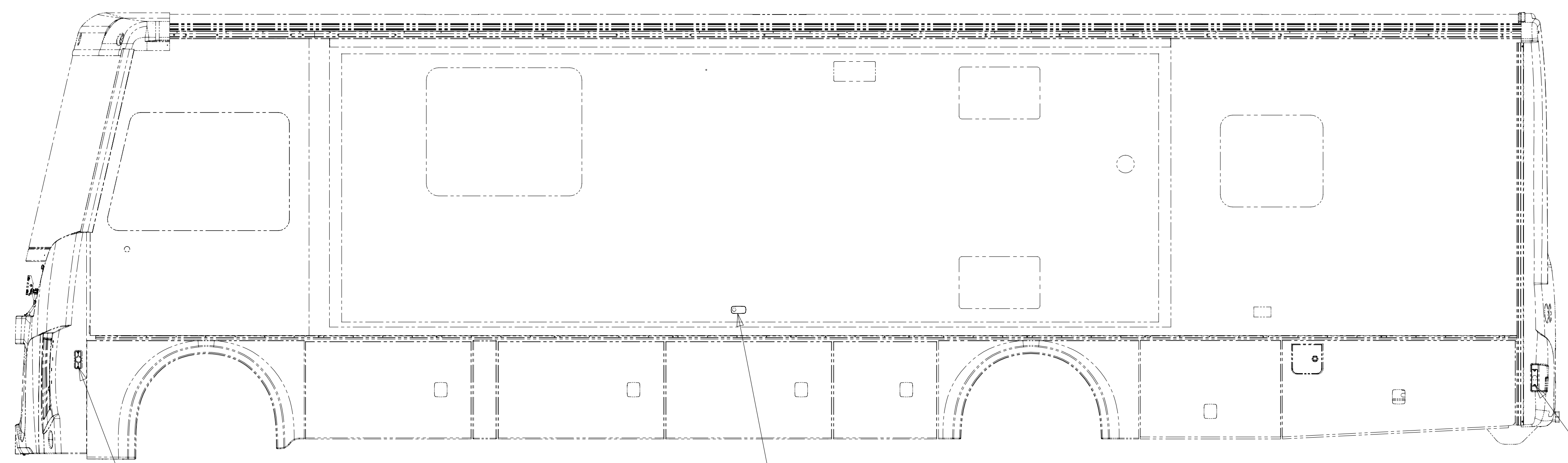
8 7 6 5 4 3 2 1



LAMP ASM-SIDEMARKER, RED
171195-01-000
SCREW
G11-08-12U (2)

LAMP-MARKER, W AMBER LENS, BLK
193802-03-000
GASKET-LIGHT
193802-05-000
SCREW
G11-08-12U (EXT) (2)

LAMP ASM-SIDEMARKER, AMBER
171195-02-000
BEZEL-LIGHT, SIDEMARKER
181242-01-CHT
SCREW
G11-08-12U (EXT) (2)



LAMP ASM-SIDEMARKER, AMBER
171195-02-000
BEZEL-LIGHT, SIDEMARKER
181242-01-CHT
SCREW
G11-08-12U (EXT) (2)

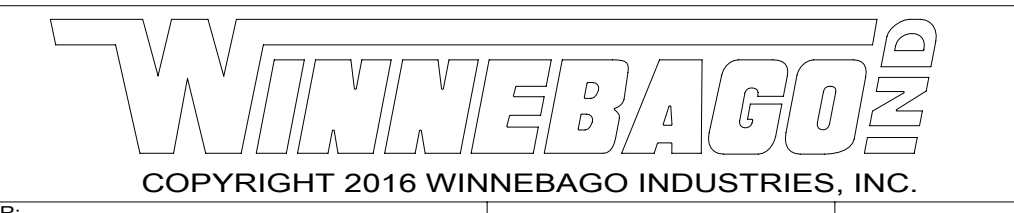
LAMP-MARKER, W AMBER LENS, BLK
193802-03-000
GASKET-LIGHT
193802-05-000
SCREW
G11-08-12U (EXT) (2)

LAMP-MARKER, RED
171195-01-000
SCREW
G11-08-12U (2)

265 CODES/STANDARDS-CSA/CMVSS

1B1 CODES/STANDARDS-USA

1B1 265



| | | | |
|--|------|-----------------------------------|-------------|
| DSNR: | | ALL DIMENSIONS ARE IN MILLIMETERS | |
| DFFR: | | MATERIAL: | |
| UNSPECIFIED TOLERANCES: | | | |
| WHOLE DIM (X) | 3 | | |
| ONE-PLACE (X.X) | 1.5 | | |
| TWO-PLACE (X.XX) | 0.50 | | |
| ANGLE | 1° | | |
| REFER TO ES0018 FOR FASTENER TIGHTENING GUIDELINES | | WEIGHT: (LBS) | FIRST USED: |

FOR ELECTRICAL TORQUE SPECIFICATIONS SEE DWG NO. 128783-01-000

FOR ELECTRICAL CALLOUTS SEE DWG NO. 121339-01-000

WIRING INSTL-EXTERIOR LAMPS

SHEET: 1 OF 3 ITEM/PART NO: 000180132 / 30033701000 REV

8 7 6 5 4 3 2 1

*300337

D

C

B

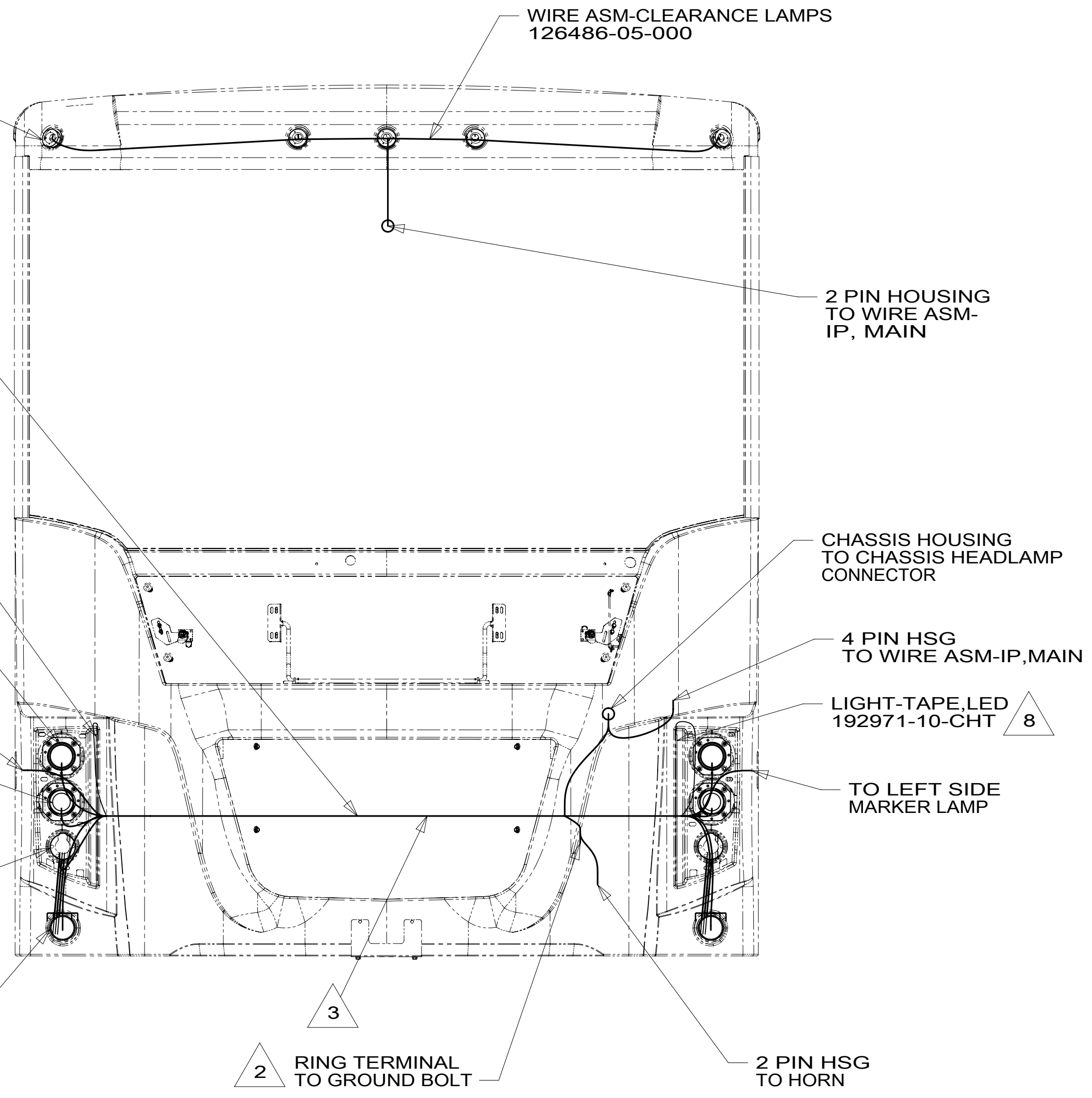
A

D

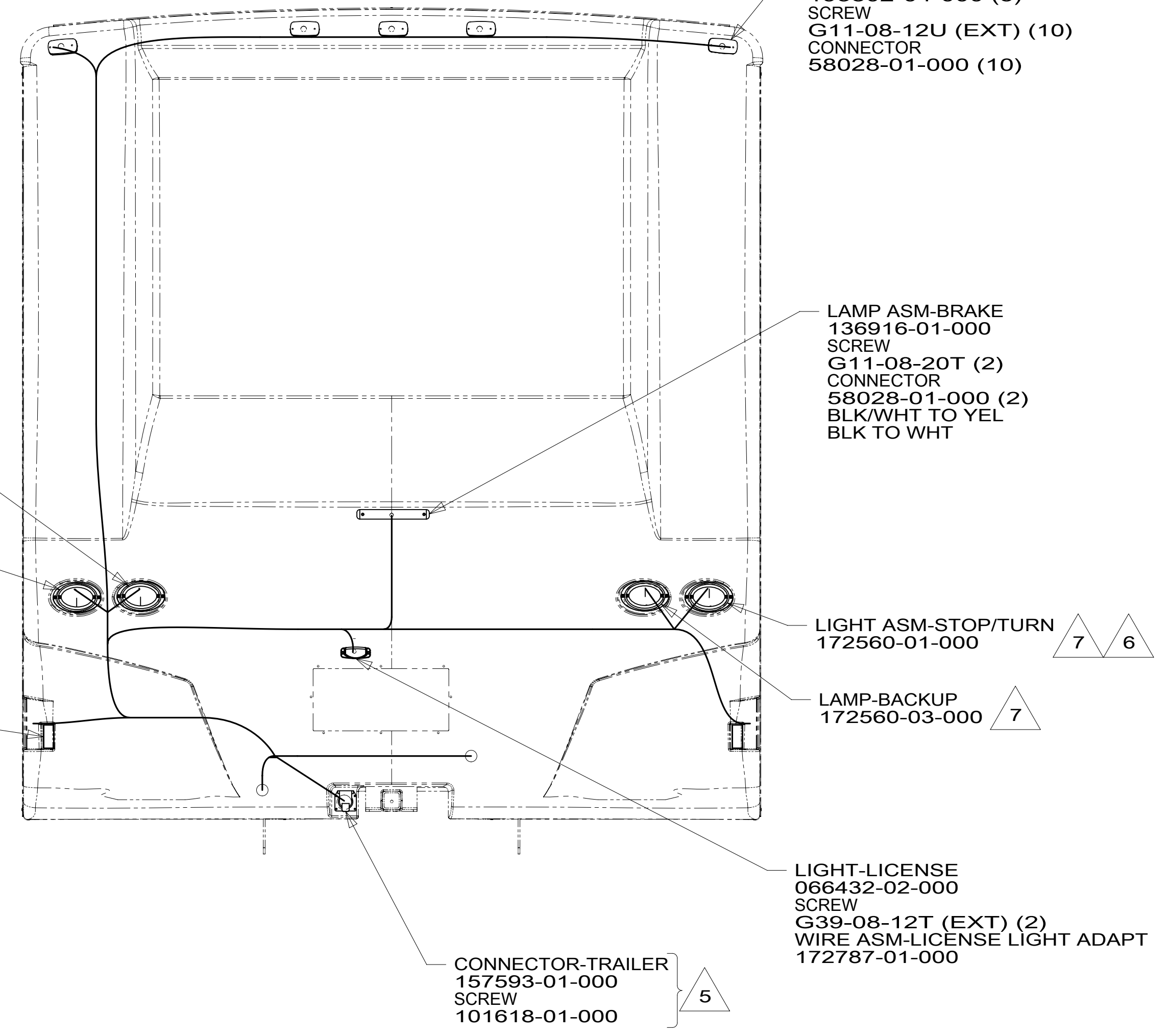
C

B

A



VIEW BA



VIEW BB

- 8 MOUNT TO FIBERGLASS AFTER PAINT AND CLEAR COAT. CLEAN SURFACE WITH ISOPROPYL ALCOHOL. REMOVE SMALL AREA OF TAPE LINER ON TOP AND BOTTOM OF THE BACK SIDE OF LIGHT STRIP. APPLY PRIMER 176823-01-000 TO ENDS OF LIGHT STRIP, LET DRY AND THEN APPLY ADHESIVE 176824-01-000 IN THE SAME AREA. REMOVE REMAINING TAPE LINER AND APPLY TO PAINTED FIBERGLASS SURFACE. DO NOT APPLY PRIMER OR ADHESIVE DIRECTLY ON PAINTED FIBERGLASS SURFACE.
- 7 MOUNT LIGHT SUCH THAT THE MOLDED CONNECTOR ON LIGHT IS TOWARD THE BOTTOM.
- 6 CONNECT 4 PIN HSG WITH WRAP OF RED TAPE TO THE STOP/TURN/TAILLAMP.
- 5 CONNECTOR-PLUG,TRAILER 146246-01-000 TO BE SUPPLIED IN COACH WITH 240
- 4 MOUNT LIGHT SUCH THAT THE MOLDED CONNECTOR ON LIGHT IS TOWARD THE TOP.
- 3 SECURE WIRE ASM APPROX. EVERY 450 TO BATTERY CABLES AND BRACKETS. USE TIE-WIRE 8343-01-000 OR 93147-01-000 AS APPROPRIATE.
- 2 CLEAN PAINT OFF METAL (BOLT) BEFORE CONNECTING GROUND TO INSURE CONTACT. ALSO MOUNT CHASSIS SUPPLIED HORN TO GROUND BOLT.

1. GATHER ALL EXCESS WIRE AFTER MAKING ALL CONNECTIONS AND BUNDLE AND SECURE WITH TIE-WIRE 8343-01-000 OR 93147-01-000.

NOTES:

- 240 TRAILER HITCH
- 265 CODES/STANDARDS-CSA/CMVSS
- 1B1 CODES/STANDARDS USA

FOR ELECTRICAL TORQUE SPECIFICATIONS SEE DWG NO. 128783-01-000

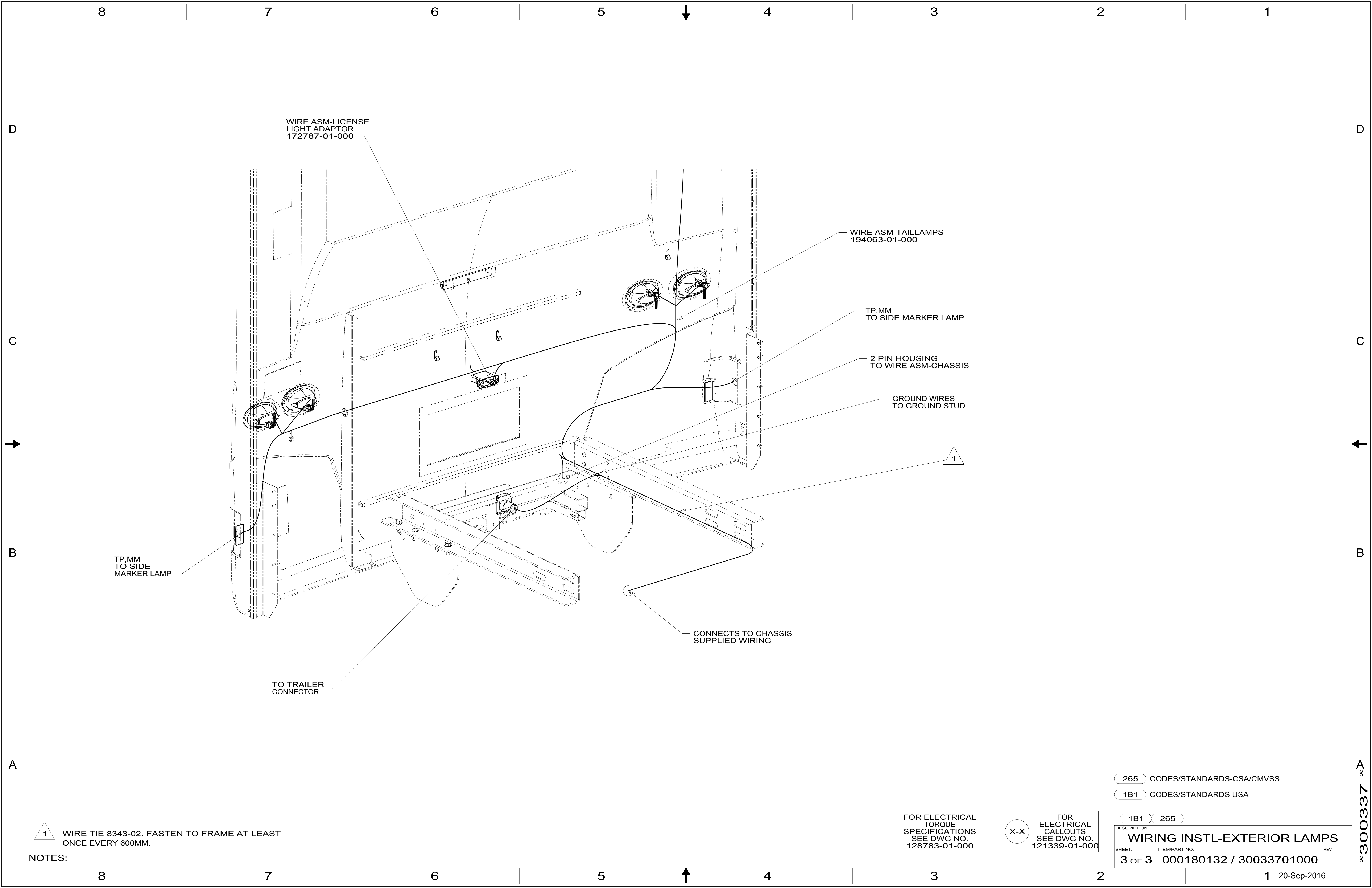
X-X FOR ELECTRICAL CALLOUTS SEE DWG NO. 121339-01-000

DESCRIPTION: 1B1 265

WIRING INSTL-EXTERIOR LAMPS

SHEET: 2 OF 3 ITEM/PART NO: 000180132 / 30033701000 REV

300337



1 WIRE TIE 8343-02. FASTEN TO FRAME AT LEAST ONCE EVERY 600MM.

NOTES:

FOR ELECTRICAL TORQUE SPECIFICATIONS SEE DWG NO. 128783-01-000

FOR ELECTRICAL CALLOUTS SEE DWG NO. 121339-01-000

265 CODES/STANDARDS-CSA/CMVSS
1B1 CODES/STANDARDS USA

| | |
|------------------------------------|-------------------------|
| DESCRIPTION: | |
| 1B1 265 | |
| WIRING INSTL-EXTERIOR LAMPS | |
| SHEET: | ITEM/PART NO. REV |
| 3 OF 3 | 000180132 / 30033701000 |

300337