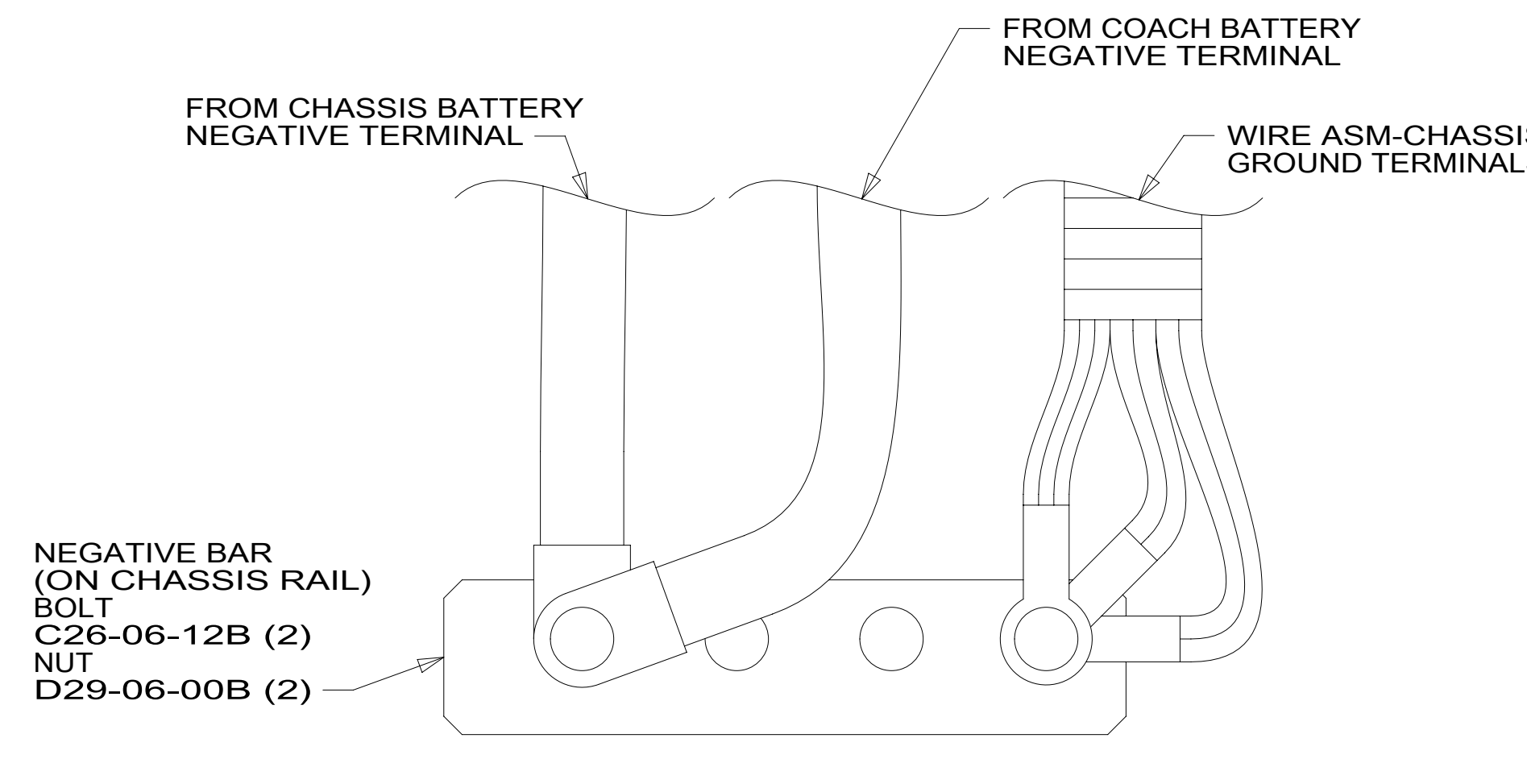


- 9 RIGHT REAR SLIDEOUT MOTOR WIRES CROSSES CHASSIS IN THIS AREA.
- 8 COIL SLIDEOUT WIRES HERE FOR TRANSPORTATION PURPOSES.
- 7 COVER SHARP EDGES WHERE WIRE CROSSES FRAME RAIL.
- 6 SEE WIRING INSTL-FRONT END FOR ADDITIONAL INFORMATION.
- 5 CLAMP 83610-01-000, SCREW G11-10-16B.
- 4 WIRE TIE 8343-04-000. FASTEN EVERY 600MM MINIMUM.
- 3. ALL DIMENSIONS ARE FROM DATUM UNLESS OTHERWISE SPECIFIED.
- 2. SECURE CONDUIT 41953, TAB AS REQUIRED, OVER ALL WIRES IN CONTACT WITH SHARP EDGES.
- 1 SEE BATTERY INSTALLATION FOR ADDITIONAL INFORMATION.



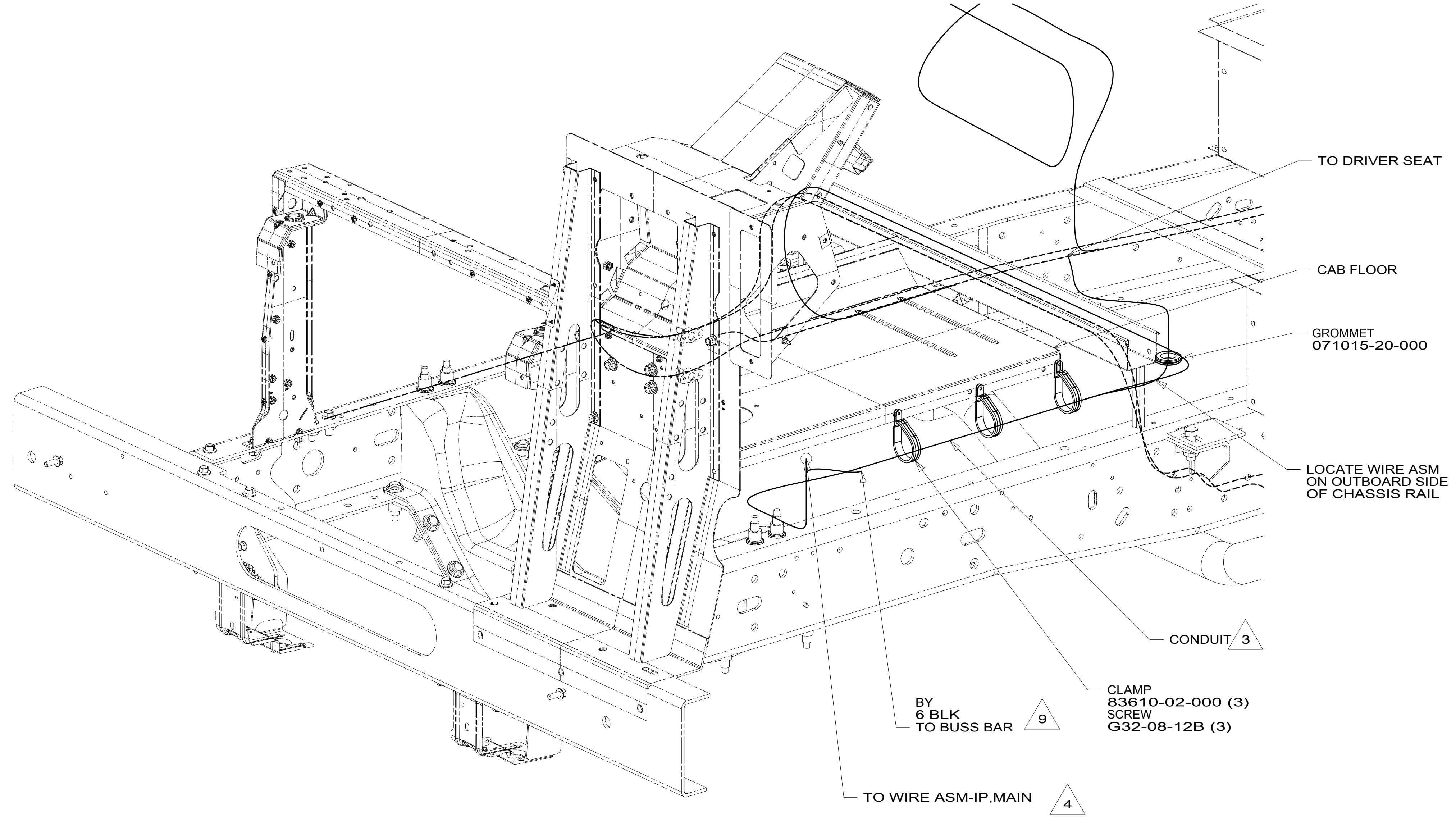
- 401 INVERTER-DC/AC, 1000 WATT
- 265 CODES/STANDARDS-CSA/CMVSS
- 1B1 CODES/STANDARDS USA

WINNEBAGO
COPYRIGHT 2016 WINNEBAGO INDUSTRIES, INC.

DSNR:		ALL DIMENSIONS ARE IN MILLIMETERS	
DIFFR:			
UNSPECIFIED TOLERANCES:	MATERIAL:		
WHOLE DIM (X) :			
ONE-PLACE (X.X) :			
TWO-PLACE (X.XX) :			
ANGLE :		WEIGHT: (LBS)	FIRST USED:
REFER TO ES0018 FOR FASTENER TIGHTENING GUIDELINES		16 D33C	
DESCRIPTION: WIRING INSTL-CHASSIS			
SHEET:	ITEM/PART NO.:	REV	
1 OF 3	000180131 / 30033601000		
REF:		1 20-Sep-2016	

FOR ELECTRICAL TORQUE SPECIFICATIONS SEE DWG NO. 128783-01-000

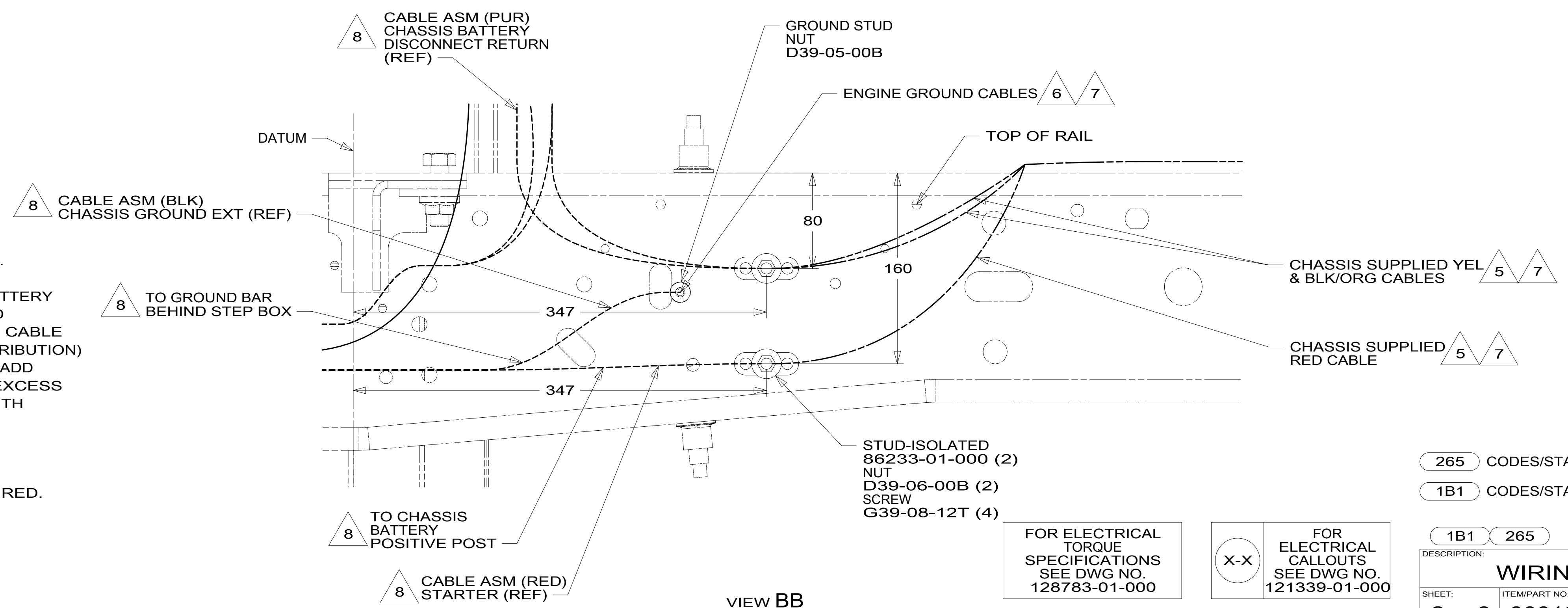
FOR ELECTRICAL CALLOUTS SEE DWG NO. 121339-01-000



VIEW BA

- 9 SEE WIRING INSTL-FRONT END FOR ADDITIONAL INFORMATION.
 - 8 SEE BATTERY INSTL FOR ADDITIONAL INFORMATION.
 - 7 SUPPLIED WITH CHASSIS
 - 6 CUT CHASSIS SUPPLIED BATTERY GROUND CABLE 700MM FROM BATTERY TERMINAL AND ADD TERMINAL 8348-01-000 TO CUT END.
 - 5 CUT CHASSIS SUPPLIED POSITIVE BATTERY CABLE 150MM FROM BATTERY TERMINAL END, DISCARD TERMINAL END AND SEPARATE WIRES. ADD TERMINAL 8348-01-000 AND HEAT SHRINK 176567-04-000 TO RED CABLE (CHASSIS STARTER) AND COMBINE YELLOW (CHASSIS POWER DISTRIBUTION) AND BLACK/ORANGE (CHASSIS ALTERNATOR) WIRES TOGETHER AND ADD TERMINAL 8348-01-000 AND HEAT SHRINK 176567-02-000. COIL EXCESS CABLE ALONG FRAME RAIL JUST BEHIND RADIATOR AND TIE UP WITH TIE-WIRE 8343-04-000.
 - 4 ROUTE WIRE THRU HOLE IN CAB FLOOR.
 - 3 COVER WITH CONDUIT 41953-10-000 AND 41953-11-000 AS REQUIRED.
2. CONNECT CABLES TO COACH SIDE OF BATTERY DISCONNECT WHEN BATTERY DISCONNECT IS USED.
 1. CUT OFF EXCESS END OF WIRE TIE.

NOTES:



VIEW BB

FOR ELECTRICAL TORQUE SPECIFICATIONS SEE DWG NO. 128783-01-000

FOR ELECTRICAL CALLOUTS SEE DWG NO. 121339-01-000

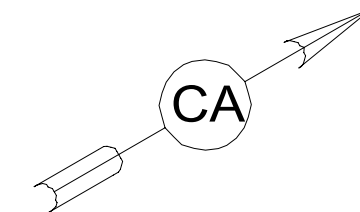
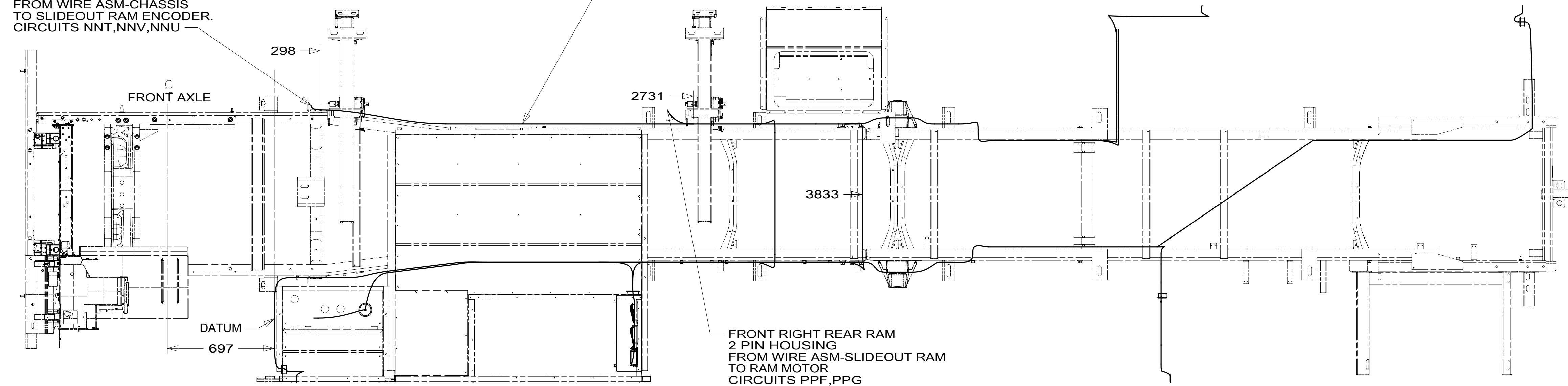
265 CODES/STANDARDS-CSA/CMVSS
1B1 CODES/STANDARDS USA

DESCRIPTION:		1B1 265	
WIRING INSTL-CHASSIS			
SHEET:	ITEM/PART NO.:	REV	
2 OF 3	000180131 / 30033601000		

FRONT RIGHT FRONT RAM
2 PIN HOUSING
FROM WIRE ASM-SLIDEOUT RAM
TO RAM MOTOR
CIRCUITS PPD,PPE
3 PIN HOUSING
FROM WIRE ASM-CHASSIS
TO SLIDEOUT RAM ENCODER.
CIRCUITS NNT,NNV,NNU

WIRE ASM-SLIDEOUT RAMS,FRONT RIGHT
149553-15-000

FRONT RIGHT REAR RAM
2 PIN HOUSING
FROM WIRE ASM-SLIDEOUT RAM
TO RAM MOTOR
CIRCUITS PPF,PPG
3 PIN HOUSING
FROM WIRE ASM-CHASSIS
TO SLIDEOUT RAM ENCODER.
CIRCUITS NNW,NNY,NNX.



4-PIN HSG
CIRCUITS
ABY,ABZ
DR,DU

CONTROL-SLIDEOUT,IN-WALL
FRONT LEFT
189400-01-000
SCREW
G39-08-12U (2)

2-PIN HSG
CIRCUITS
XXW,XXV

CLAMP
10497-02-000 (2)
SCREW
G67-10-12B (2)

2-PIN HSG
CIRCUITS
LLL,LLK

FROM WIRE
ASM-CHASSIS
6 PIN HSG
CIRCUITS
NNU, NNT, NNV,
NNX, NNW, NNY

FROM WIRE
ASM-CHASSIS
10 PIN HSG
CIRCUITS
HHF, NNN, NNP,
NNR, HHE, WWR,
DDJ, WWP, WWS

SLIDEOUT MODULE,
FRONT RIGHT
171058-02-000
SCREW
G39-08-08U (4)

FROM WIRE ASM-
SLIDEOUT RAMS,
FRONT RIGHT
5 PIN HSG
CIRCUITS
PPD,PPE,PPG,PPF

FROM WIRE ASM-
SLIDEOUT POWER
4 PIN HSG
CIRCUITS
NNZ,PPA,PPC,PPB

6-PIN HSG
CIRCUITS
UUY,UUZ,VVA
UUX,UUV,UUW

6-PIN HSG
CIRCUITS
UUS,UUT,UUU
VVM,VVK,VVL

6-PIN HSG
CIRCUITS
GGE,GGF,GGJ
NNB,NNC,NND

6-PIN HSG
CIRCUITS
ACE,ACF,NNS
NNE,NNF,NNG

VIEW CB

CONTROL-SLIDEOUT,IN-WALL
REAR RIGHT
189400-01-000
SCREW
G39-08-12U (2)

4-PIN HSG
CIRCUITS
ACC,ACD
HHG,HHH

2-PIN HSG
CIRCUIT
DDJ

BRACKET-MODULE MOUNT
154367-27-CHT
SCREW
G39-10-12U (5)

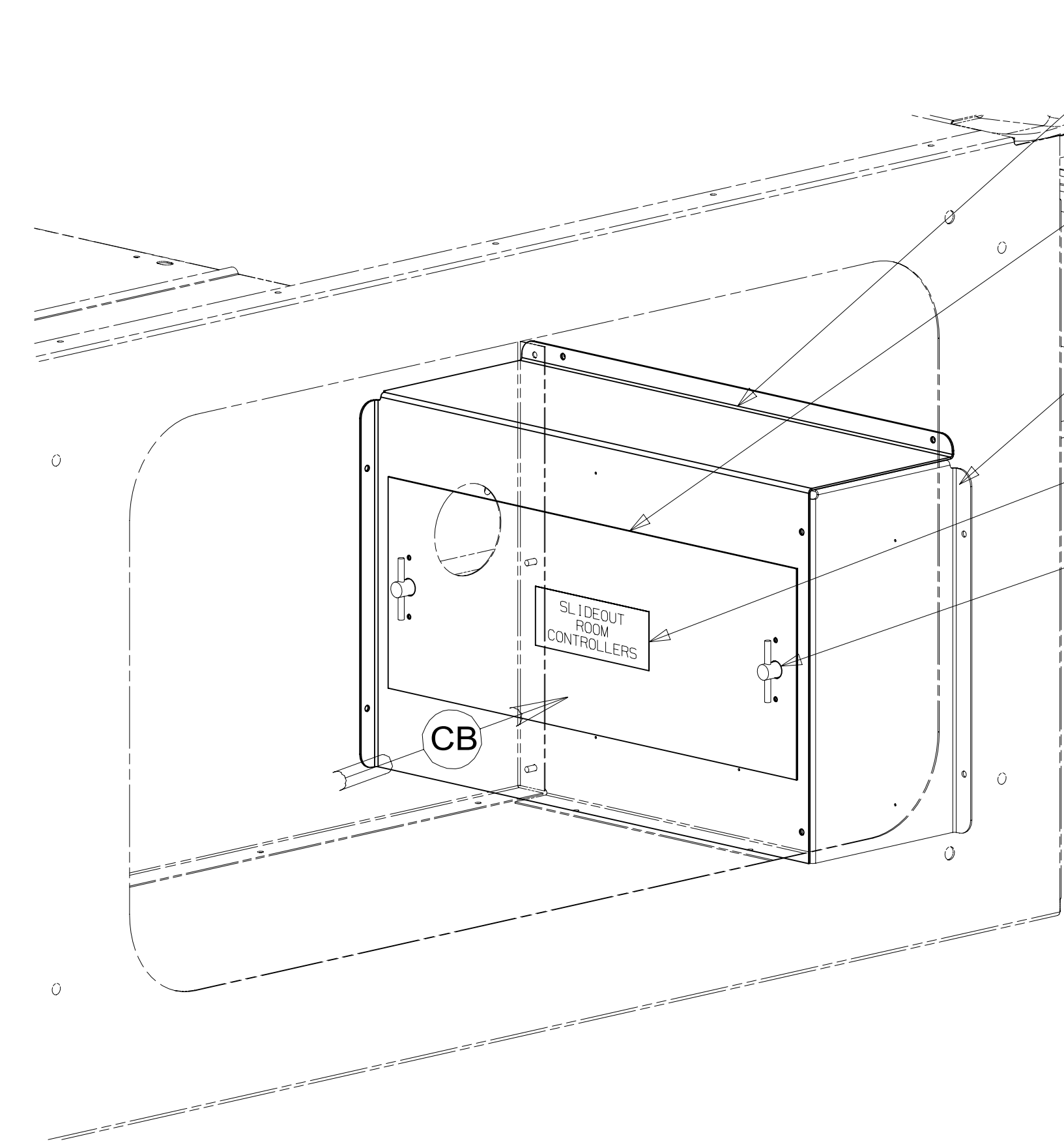
COVER-ELECTRICAL
170153-05-CHT
SCREW
G39-08-08U (4)

DOOR ASM-ELECTRICAL BOX
142145-01-CHT
SEAL
92492-11-000

COVER-ELECTRICAL
170153-06-CHT
SCREW
G39-08-08U (4)

LABEL
098379-09-000

LATCH
098196-01-000 (2)
RIVET
H15-04-02R (4)



VIEW CA

1 SEE CHASSIS ELECTRICAL BOX ASM FOR ADDITIONAL INFORMATION.

FOR ELECTRICAL
TORQUE
SPECIFICATIONS
SEE DWG NO.
128783-01-000

FOR ELECTRICAL
CALLOUTS
SEE DWG NO.
121339-01-000

- 265 CODES/STANDARDS-CSA/CMVSS
- 1B1 CODES/STANDARDS USA

DESCRIPTION: WIRING INSTL-CHASSIS	
SHEET: 3 OF 3	ITEM/PART NO: 000180131 / 30033601000
REV	