

- NOTES:**
1. AT MINIMUM ALL WIRES TO BE SUPPORTED AND SECURED PER CODE REQUIREMENTS. USE CLAMP 10495 OR 10497 OR WIRE TIE 8343 OR 108046 AND SCREW G67-XX-XXX OR G56-XX-XXX AS APPROPRIATE FOR INSTALLATION.
 2. SECURE CONDUIT 41953, TAB AS REQUIRED, OVER ALL WIRES IN CONTACT WITH SHARP EDGES.
- 8 REMOVE REAR VIEW MIRROR & MOUNT CAMERA TO CENTER OF WINDSHIELD AND 25 MM BELOW REAR VIEW MIRROR BUTTON. ROUTE CABLE UP ABOVE HEADLINER THEN LEFT DOWN LEFT A-POST COVER TO CENTER DASH TO CONNECT TO WIRE ASM-CHASSIS.
- 7 NOTCH A-POST COVER WHERE IT MEETS THE DASH TO ALLOW DISPLAY CABLE THROUGH. MOUNT DISPLAY TO A-POST COVER AND ADJUST FOR DRIVER'S VIEWING. ROUTE DISPLAY CABLE TO CENTER DASH AND CONNECT TO CAMERA HARNESS.
- 6 REMOVE PLASTIC TRAY AND DISCARD.
- 5 REMOVE PAINT AND UNDER COATING FROM GROUND BOLT AND NUT TO INSURE PROPER CONTACT.
- 4 SEE WIRING INSTL-BODY, 12V FOR ADDITIONAL INFORMATION.
- 3 CUT WIRE TIE AROUND SPRINTER SEAL, ROUTE THE CHASSIS WIRING THROUGH HOLE AND WIRE TIE SEAL WITH WIRE TIE 8343-04-000.

- 11 DRILL 12.3 MM HOLE INTO DASH PANEL.
- 10 SEE SHT 5 & SHT 6 FOR ADDITIONAL INFORMATION.
- 9 SEE BATTERY INSTL FOR ADDITIONAL INFORMATION.

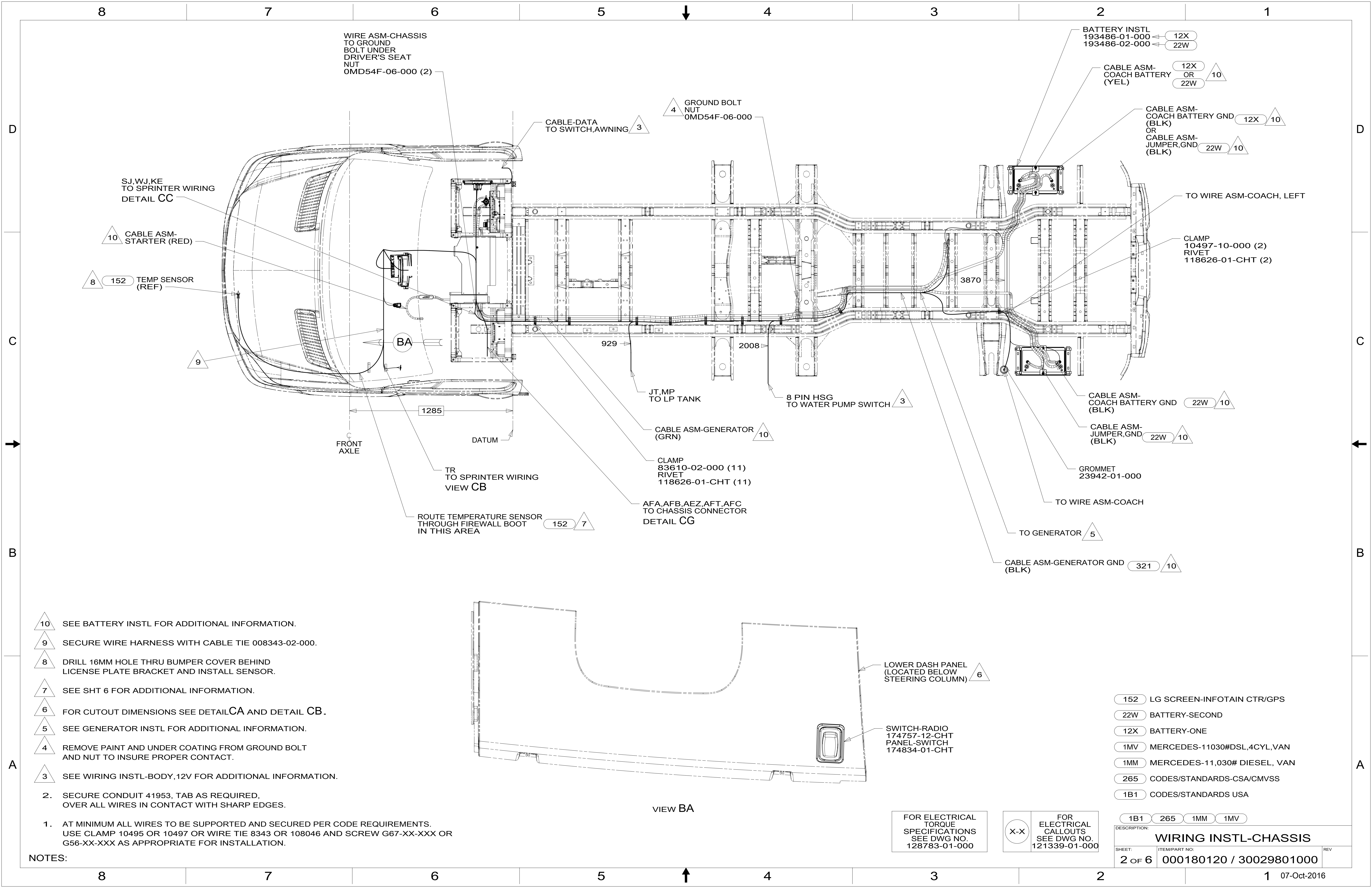
FOR ELECTRICAL TORQUE SPECIFICATIONS SEE DWG NO. 128783-01-000

FOR ELECTRICAL CALLOUTS SEE DWG NO. 121339-01-000

- 36C COLLISION AVOIDANCE SYSTEM
- 1MV MERCEDES-11030#DSL,4CYL,VAN
- 1MM MERCEDES-11,030# DIESEL, VAN
- 265 CODES/STANDARDS-CSA/CMVSS
- 1B1 CODES/STANDARDS USA

WINNEBAGO
COPYRIGHT 2016 WINNEBAGO INDUSTRIES, INC.

DSNR:	ALL DIMENSIONS ARE IN MILLIMETERS
DIFTR:	
UNSPECIFIED TOLERANCES:	MATERIAL:
WHOLE DIM (X) : 3	
ONE-PLACE (X.X) : 1.5	
TWO-PLACE (X.XX) : 0.50	
ANGLE : 1°	
REFER TO ES0018 FOR FASTENER TIGHTENING GUIDELINES	WEIGHT: (LBS) FIRST USED: 16 170A
DESCRIPTION: WIRING INSTL-CHASSIS	
SHEET: 1 OF 6	ITEM/PART NO: 000180120 / 30029801000
REF:	REV: 1 07-Oct-2016



- 10 SEE BATTERY INSTL FOR ADDITIONAL INFORMATION.
- 9 SECURE WIRE HARNESS WITH CABLE TIE 008343-02-000.
- 8 DRILL 16MM HOLE THRU BUMPER COVER BEHIND LICENSE PLATE BRACKET AND INSTALL SENSOR.
- 7 SEE SHT 6 FOR ADDITIONAL INFORMATION.
- 6 FOR CUTOUT DIMENSIONS SEE DETAIL CA AND DETAIL CB.
- 5 SEE GENERATOR INSTL FOR ADDITIONAL INFORMATION.
- 4 REMOVE PAINT AND UNDER COATING FROM GROUND BOLT AND NUT TO INSURE PROPER CONTACT.
- 3 SEE WIRING INSTL-BODY,12V FOR ADDITIONAL INFORMATION.

2. SECURE CONDUIT 41953, TAB AS REQUIRED, OVER ALL WIRES IN CONTACT WITH SHARP EDGES.
1. AT MINIMUM ALL WIRES TO BE SUPPORTED AND SECURED PER CODE REQUIREMENTS. USE CLAMP 10495 OR 10497 OR WIRE TIE 8343 OR 108046 AND SCREW G67-XX-XXX OR G56-XX-XXX AS APPROPRIATE FOR INSTALLATION.

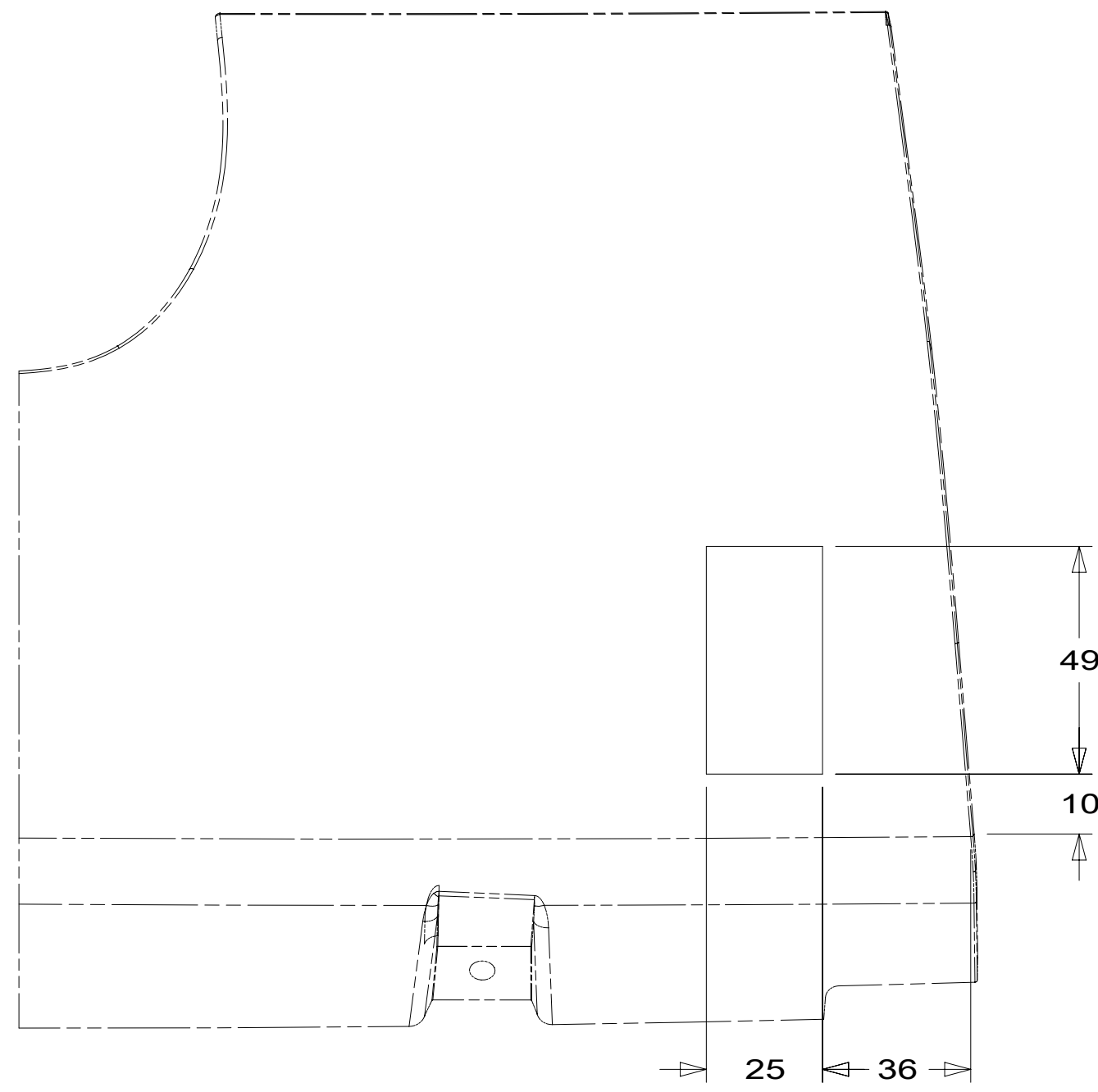
NOTES:

- 152 LG SCREEN-INFOTAIN CTR/GPS
- 22W BATTERY-SECOND
- 12X BATTERY-ONE
- 1MV MERCEDES-11030#DSL,4CYL,VAN
- 1MM MERCEDES-11,030# DIESEL, VAN
- 265 CODES/STANDARDS-CSA/CMVSS
- 1B1 CODES/STANDARDS USA

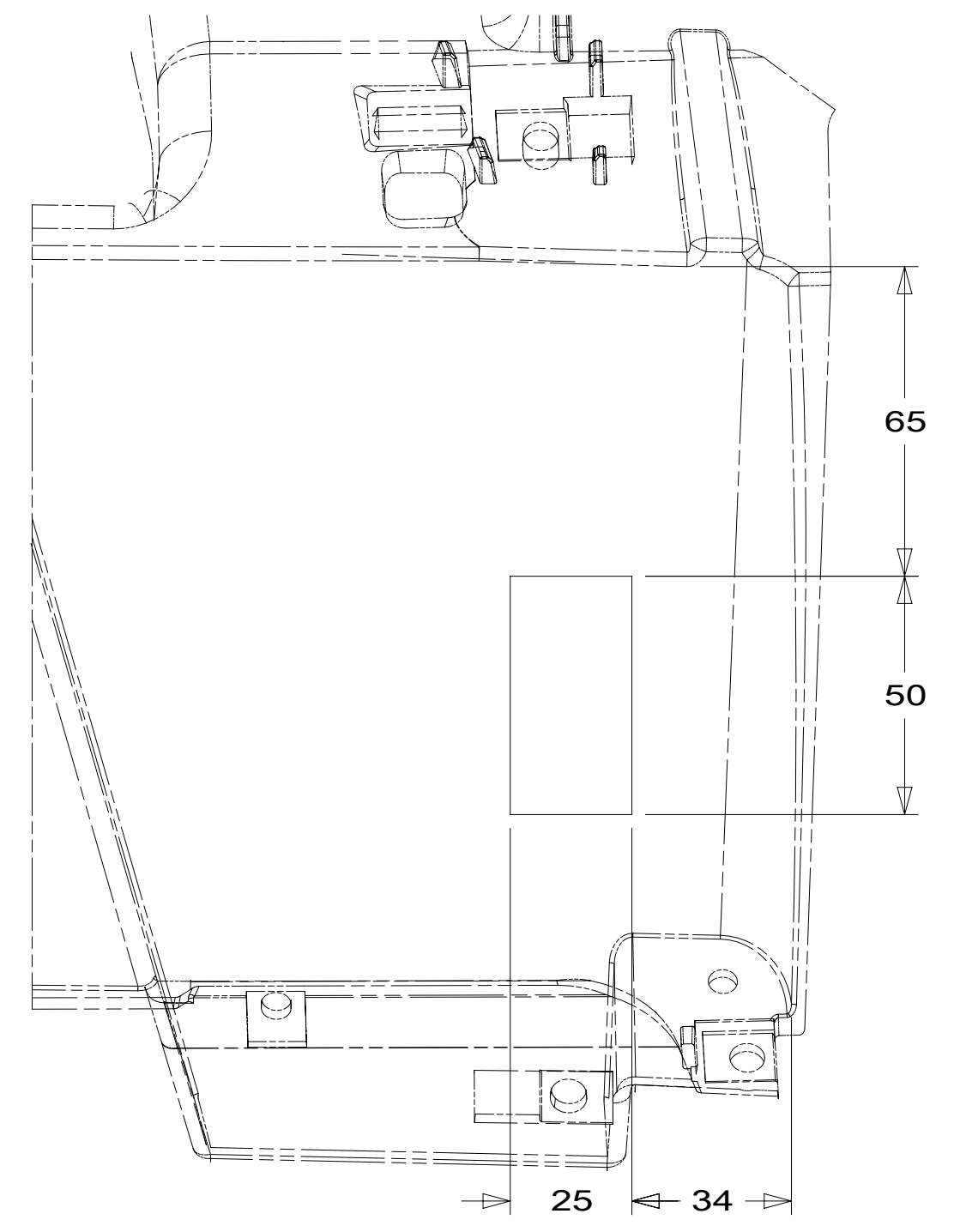
FOR ELECTRICAL TORQUE SPECIFICATIONS SEE DWG NO. 128783-01-000

FOR ELECTRICAL CALLOUTS SEE DWG NO. 121339-01-000

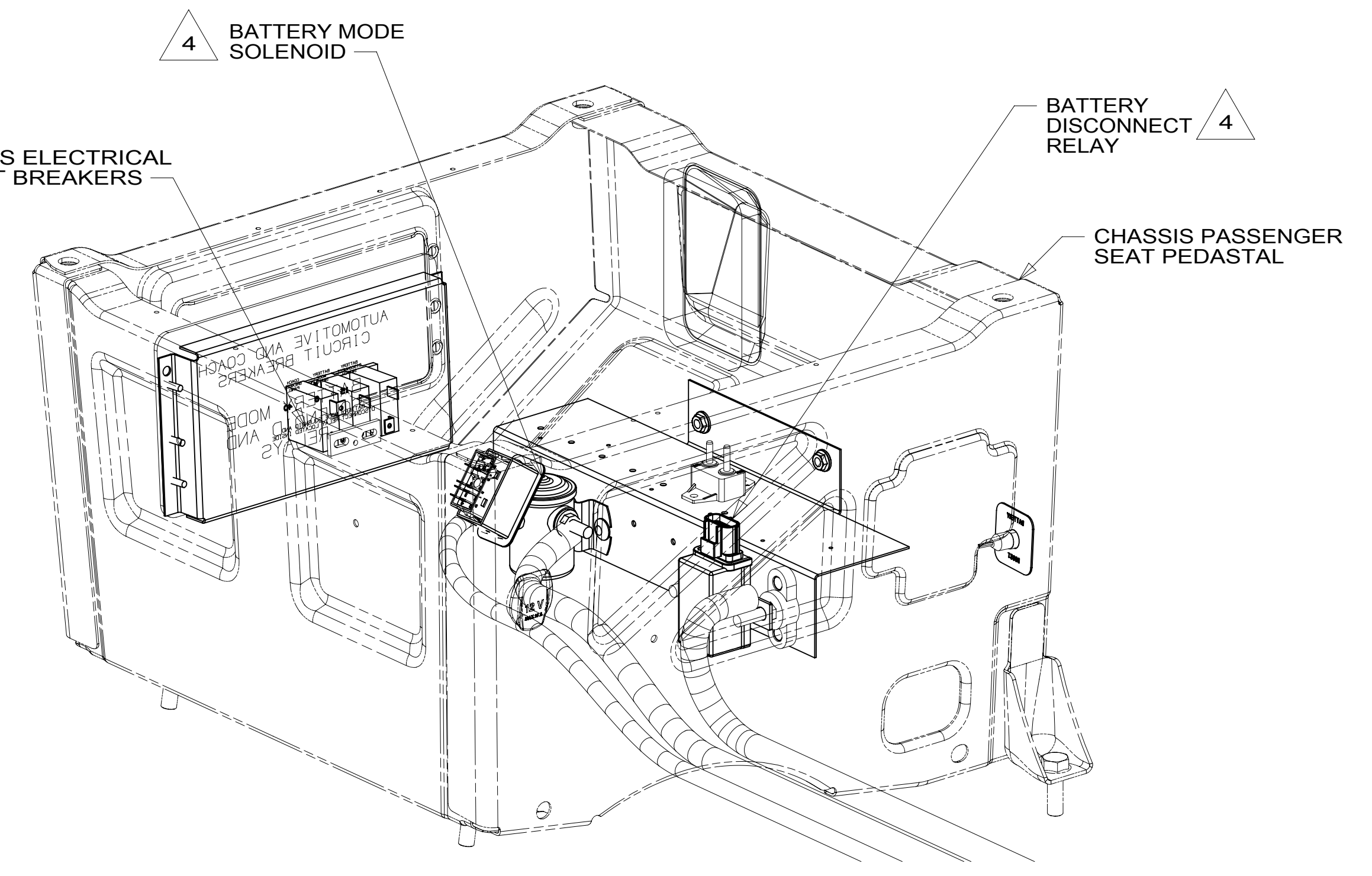
DESCRIPTION:	1B1 265 1MM 1MV		
WIRING INSTL-CHASSIS			
SHEET:	ITEM/PART NO.:	REV:	
2 OF 6	000180120 / 30029801000		



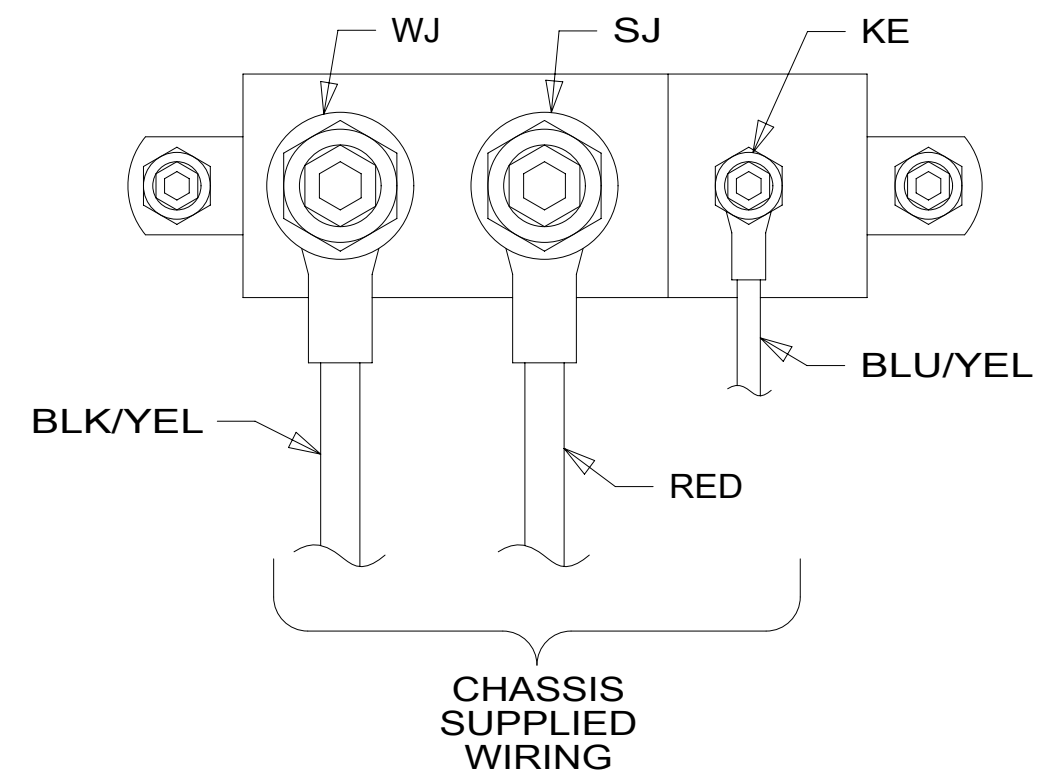
DETAIL CA 2



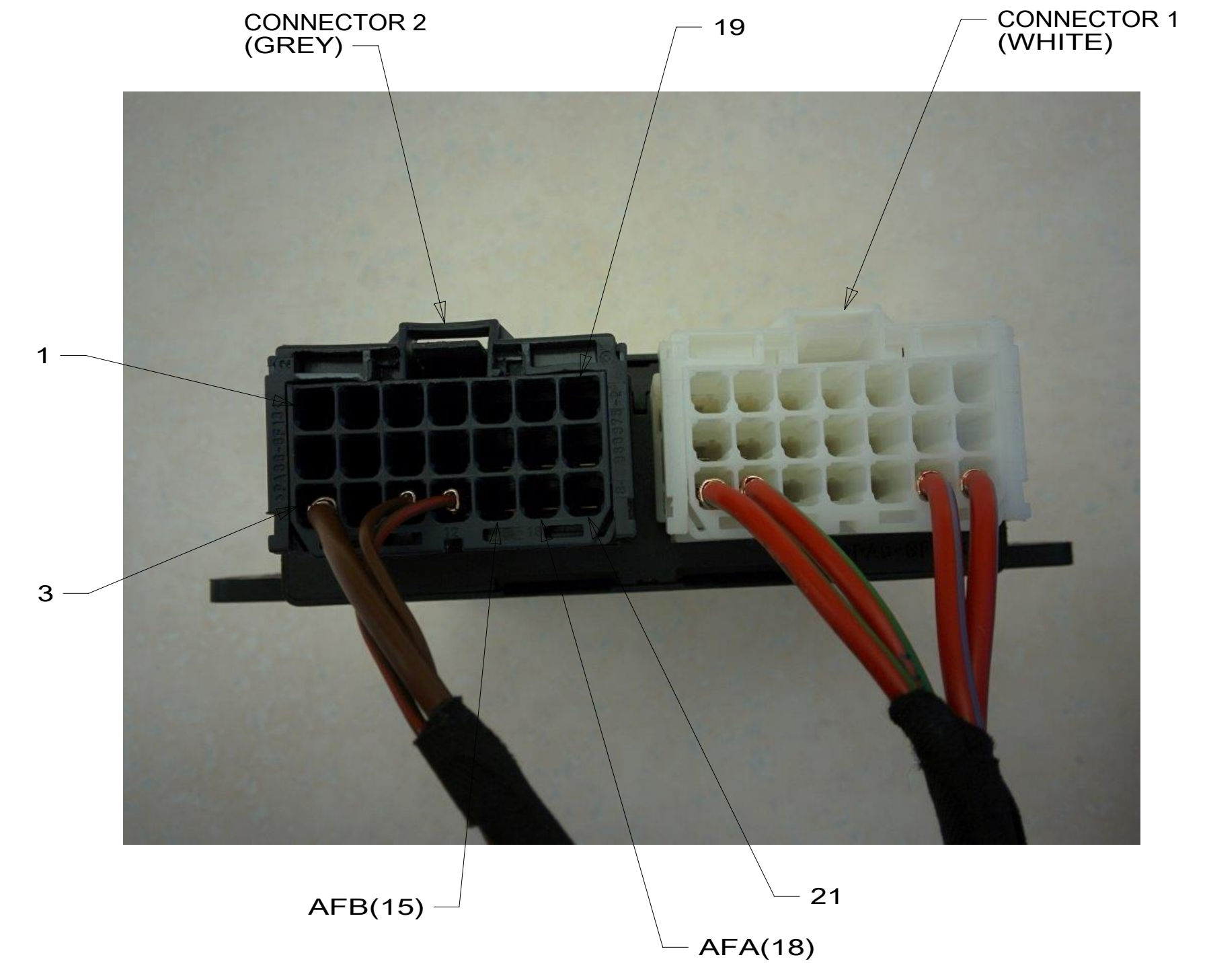
VIEW CB 6



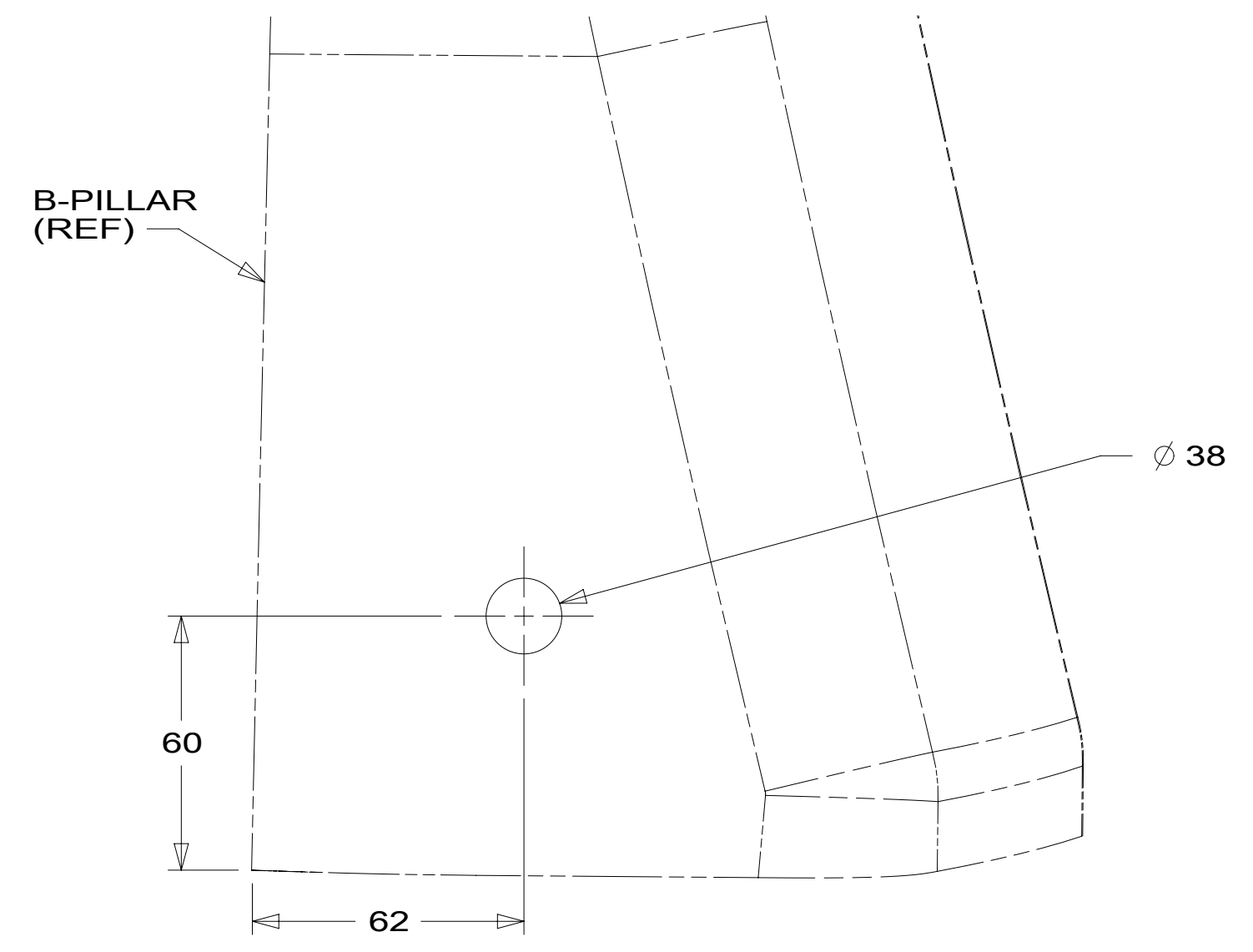
DETAIL CD



DETAIL CC 3



DETAIL CG 5



DETAIL CE

- 6 DASH STRUCTURE LOCATED BEHIND LOWER DASH PANEL.
- 5 LOCATED UNDER DRIVER'S SEAT.
- 4 SEE CHASSIS ELECTRICAL BOX ASM FOR ADDITIONAL INFORMATION.
- 3 CONNECTION POINT IS LOCATED UNDER DRIVERS SEAT.
- 2 LOWER DASH PANEL.

NOTES:
1. SECURE CONDUIT 41953, TAB AS REQUIRED, OVER ALL WIRES IN CONTACT WITH SHARP EDGES.

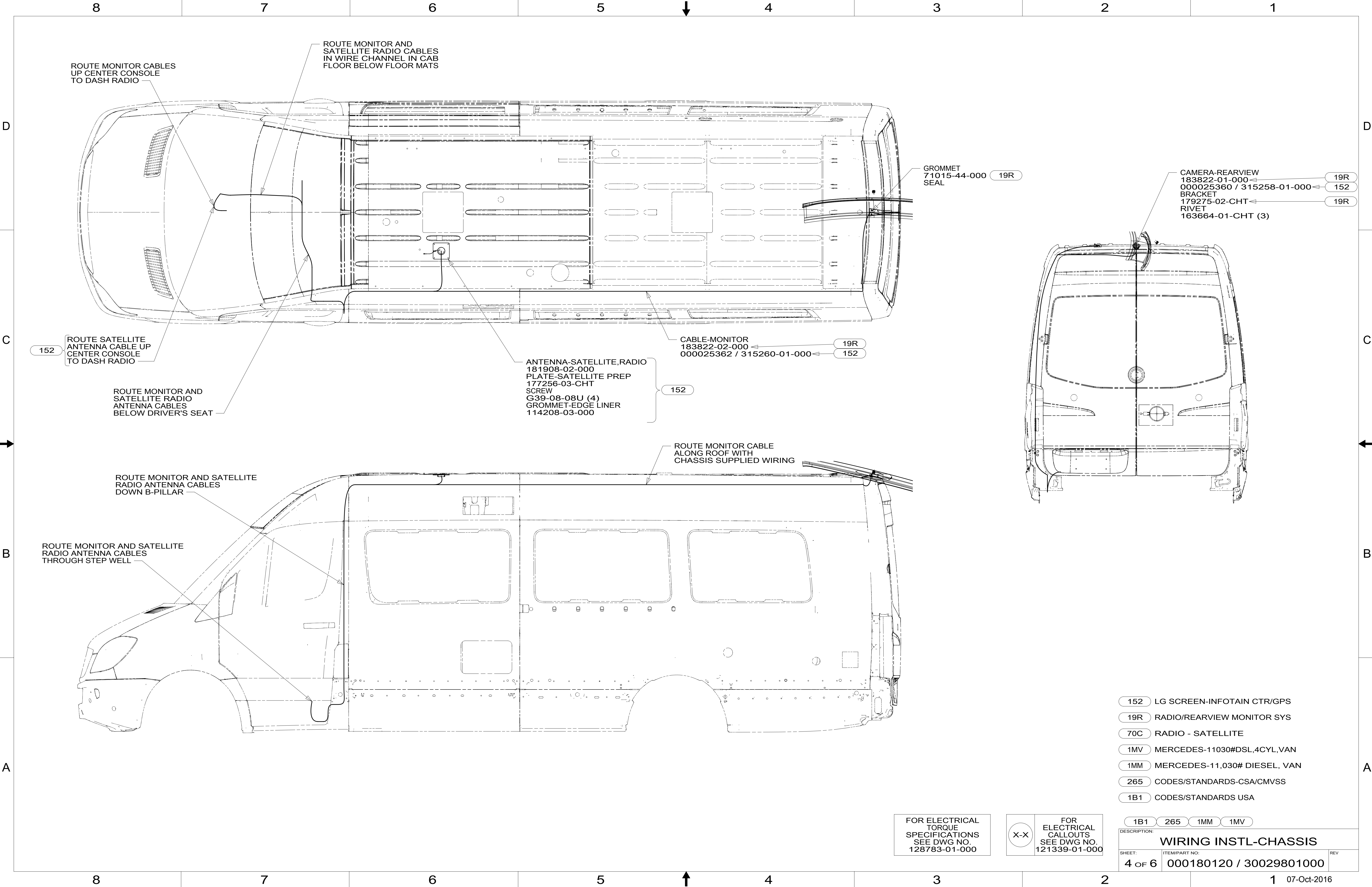
FOR ELECTRICAL TORQUE SPECIFICATIONS SEE DWG NO. 128783-01-000

FOR ELECTRICAL CALLOUTS SEE DWG NO. 121339-01-000

- 1MV MERCEDES-11030#DSL,4CYL,VAN
- 1MM MERCEDES-11,030# DIESEL, VAN
- 265 CODES/STANDARDS-CSA/CMVSS
- 1B1 CODES/STANDARDS USA

1B1 265 1MM 1MV

DESCRIPTION:
WIRING INSTL-CHASSIS
SHEET: 3 OF 6 ITEM/PART NO: 000180120 / 30029801000 REV



ROUTE MONITOR CABLES UP CENTER CONSOLE TO DASH RADIO

ROUTE MONITOR AND SATELLITE RADIO CABLES IN WIRE CHANNEL IN CAB FLOOR BELOW FLOOR MATS

GROMMET 71015-44-000 19R SEAL

CAMERA-REARVIEW 183822-01-000 19R
 000025360 / 315258-01-000 152
 BRACKET 179275-02-CHT 19R
 RIVET 163664-01-CHT (3)

152 ROUTE SATELLITE ANTENNA CABLE UP CENTER CONSOLE TO DASH RADIO

ROUTE MONITOR AND SATELLITE RADIO ANTENNA CABLES BELOW DRIVER'S SEAT

ANTENNA-SATELLITE,RADIO 181908-02-000
 PLATE-SATELLITE PREP 177256-03-CHT
 SCREW G39-08-08U (4)
 GROMMET-EDGE LINER 114208-03-000

CABLE-MONITOR 183822-02-000 19R
 000025362 / 315260-01-000 152

ROUTE MONITOR CABLE ALONG ROOF WITH CHASSIS SUPPLIED WIRING

ROUTE MONITOR AND SATELLITE RADIO ANTENNA CABLES DOWN B-PILLAR

ROUTE MONITOR AND SATELLITE RADIO ANTENNA CABLES THROUGH STEP WELL

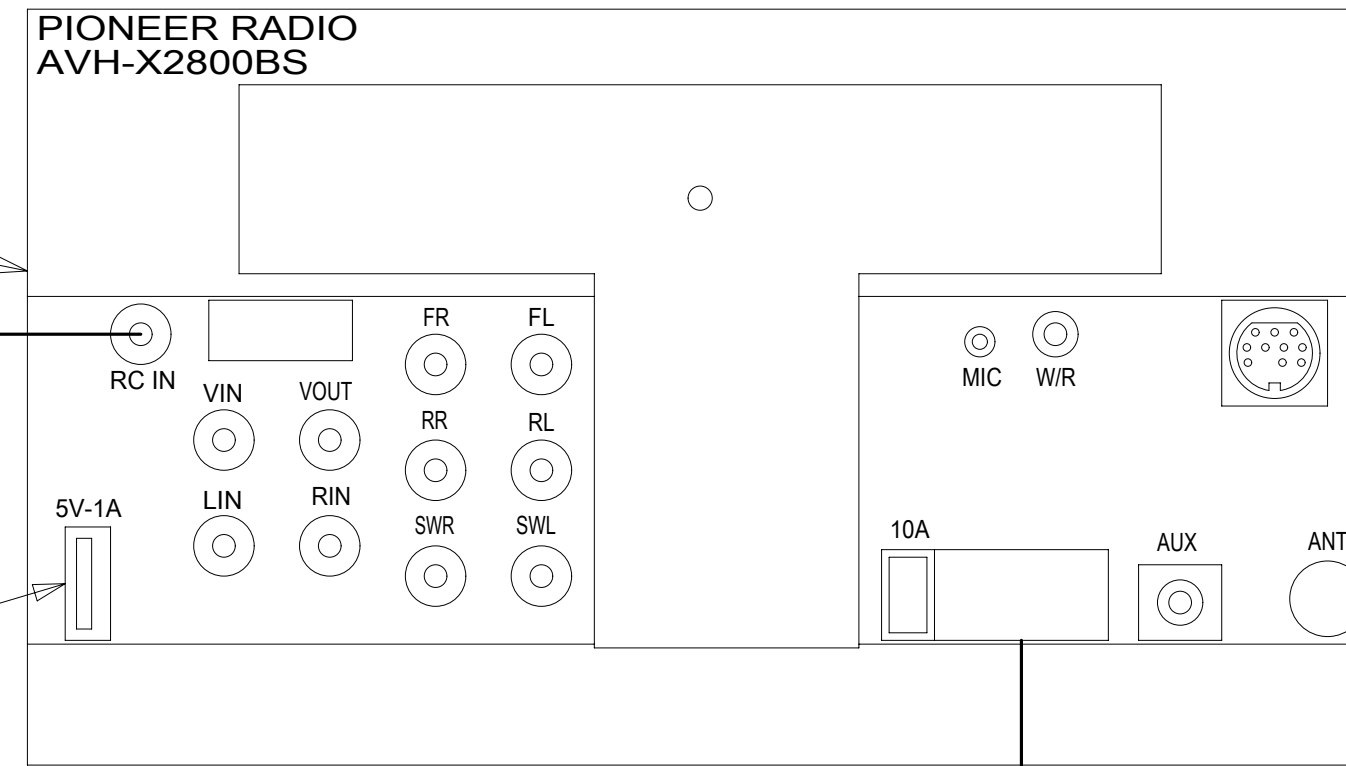
- 152 LG SCREEN-INFOTAIN CTR/GPS
- 19R RADIO/REARVIEW MONITOR SYS
- 70C RADIO - SATELLITE
- 1MV MERCEDES-11030#DSL,4CYL,VAN
- 1MM MERCEDES-11,030# DIESEL, VAN
- 265 CODES/STANDARDS-CSA/CMVSS
- 1B1 CODES/STANDARDS USA

FOR ELECTRICAL TORQUE SPECIFICATIONS SEE DWG NO. 128783-01-000

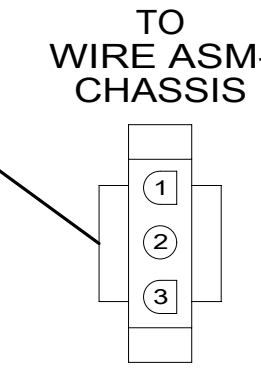
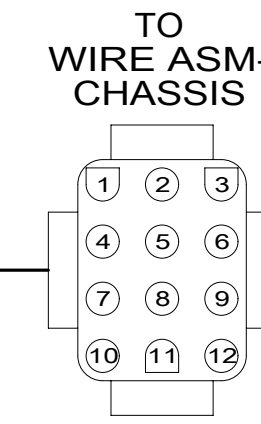
FOR ELECTRICAL CALLOUTS SEE DWG NO. 121339-01-000

DESCRIPTION:	1B1 265 1MM 1MV	
WIRING INSTL-CHASSIS		
SHEET:	ITEM/PART NO.:	REV
4 OF 6	000180120 / 30029801000	

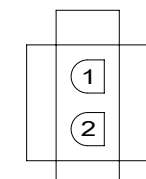
RADIO-AM/FM/DVD,
TOUCH,2-DIN
000014453 / 311897-01-000
BRACKET
178610-01-000
APPLIQUE-RADIO
185341-01-CHT
ADAPTOR-ANTENNA
114366-01-000



HARNESS-RADIO,12 PIN
183820-19-000



TO WIRE ASM-
CHASSIS



HARNESS-CAMERA ADAPTER
183820-03-000

CABLE-CAMERA,20M
(REF)

TO REAR
CAMERA

1 PLUG USB CABLE SUPPLIED WITH RADIO INTO LEAD ON BACK OF RADIO MARKED 'USB'. DRILL 16MM DIAMETER HOLE IN THE TRAY ABOVE RADIO. THE HOLE IS TO BE LOCATED ON THE PASSENGER SIDE OF THE TRAY 50MM FROM THE END NEAREST THE WINDSHIELD. ROUTE CABLE INTO THE TRAY AND LEAVE 200MM OF CABLE IN THE TRAY.

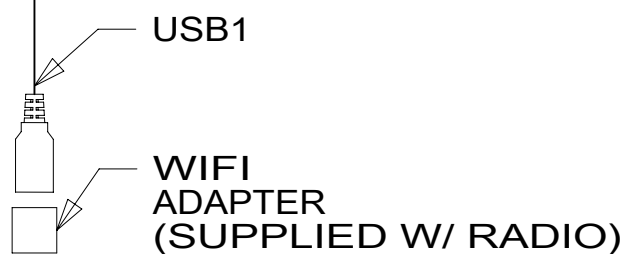
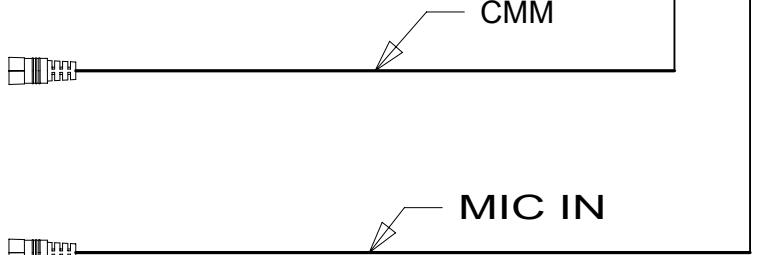
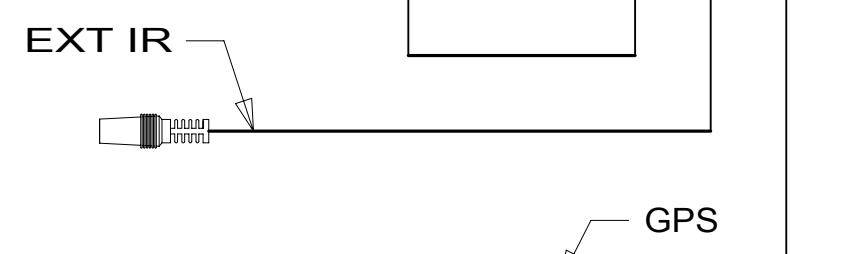
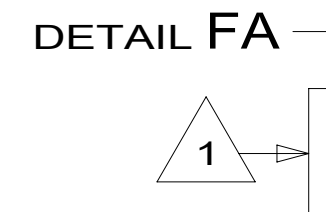
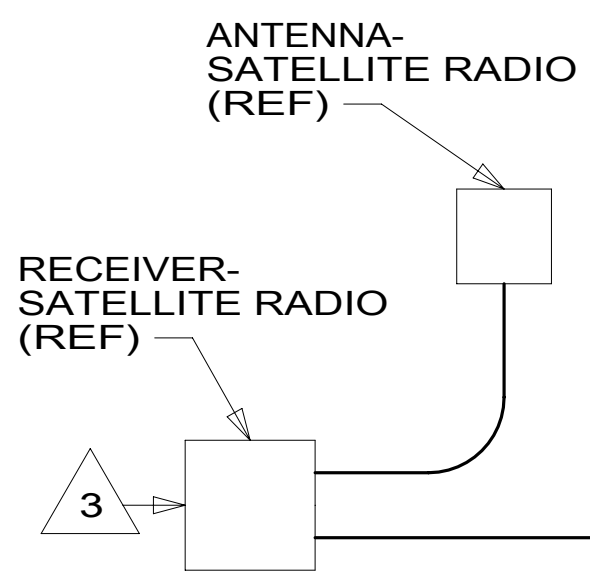
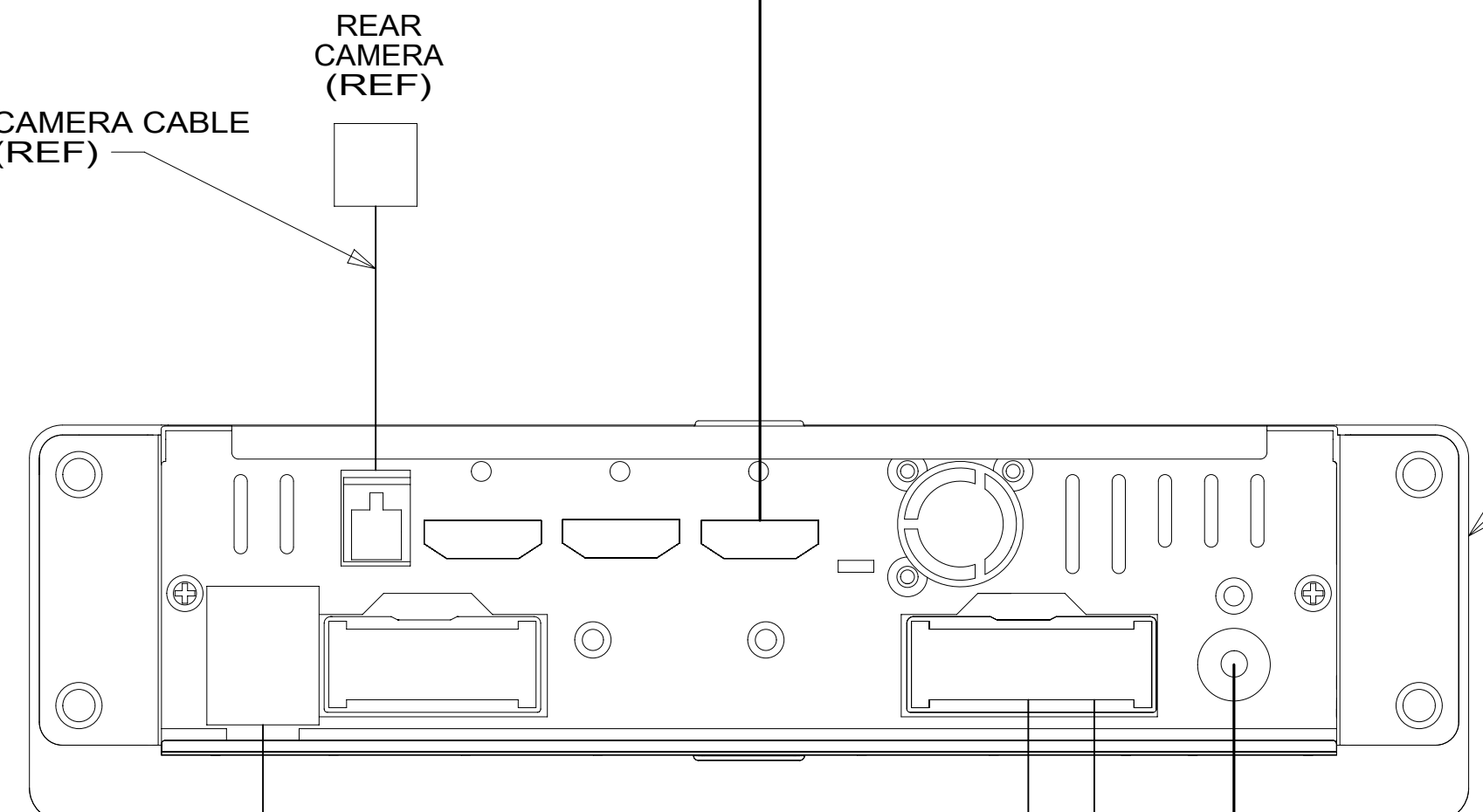
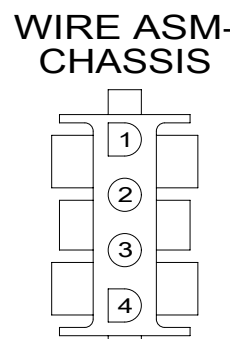
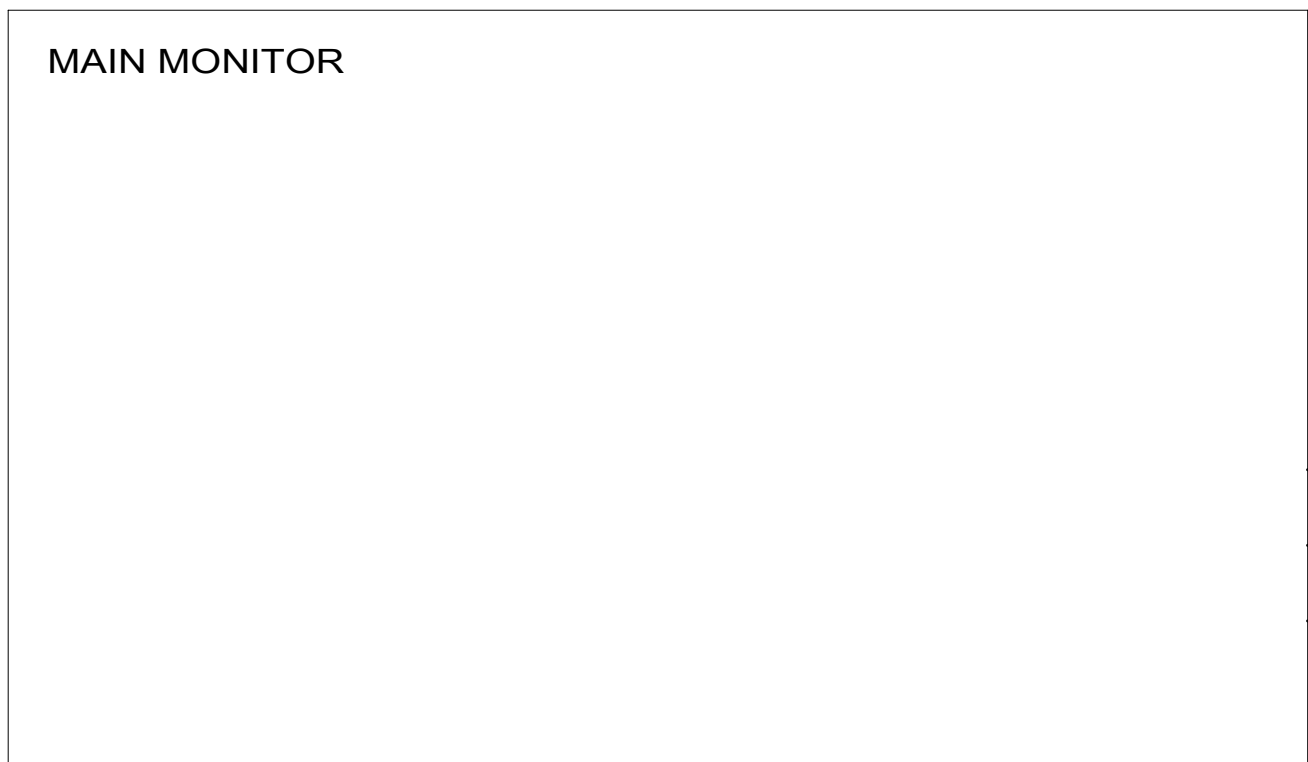
NOTES:

FOR ELECTRICAL TORQUE SPECIFICATIONS SEE DWG NO. 128783-01-000

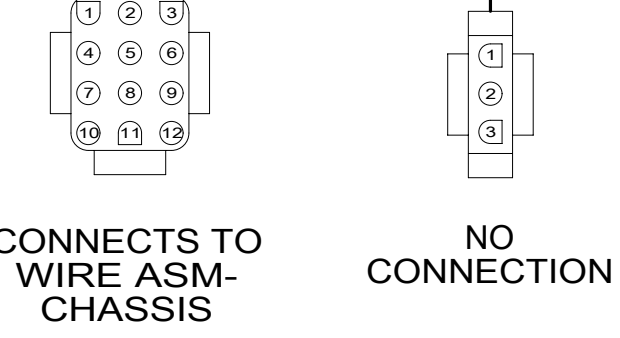
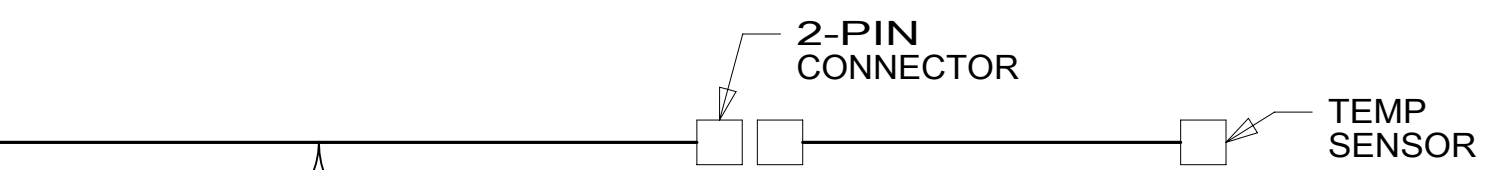
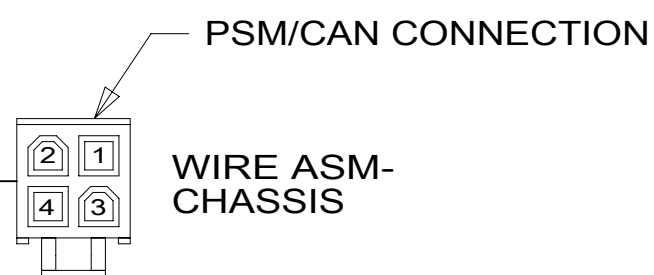
FOR ELECTRICAL CALLOUTS SEE DWG NO. 121339-01-000

- 19R RADIO/REARVIEW MONITOR SYS
- 265 CODES/STANDARDS-CSA/CMVSS
- 1B1 CODES/STANDARDS USA

DESCRIPTION: WIRING INSTL-CHASSIS		
SHEET: 5 OF 6	ITEM/PART NO: 000180120 / 30029801000	REV



- RADIO-INFOTAINMENT, 9" 000025353 /315254-01-000
- REMOTE 176654-04-000
- RECEIVER-SAT RADIO 181908-05-000
- TEMP SENSOR 176654-13-000
- ADAPTOR-ANTENNA 114366-01-000



- NOTES:
- 4 WIRE TIE TO DASH RADIO WIRING BEHIND THE RADIO.
 - 3 PLUG CABLE INTO LEAD ON BACK OF RADIO.
 - 2 SEE SHT 2 FOR ADDITIONAL INFORMATION.
 - 1 MOUNT GPS ANTENNA TO TOP OF DEFROST PLENUM BEHIND RADIO.

FOR ELECTRICAL TORQUE SPECIFICATIONS SEE DWG NO. 128783-01-000

FOR ELECTRICAL CALLOUTS SEE DWG NO. 121339-01-000

- 152 LG SCREEN-INFOTAIN CTR/GPS
- 265 CODES/STANDARDS-CSA/CMVSS
- 1B1 CODES/STANDARDS USA

DESCRIPTION: WIRING INSTL-CHASSIS		
SHEET: 6 OF 6	ITEM/PART NO: 000180120 / 30029801000	REV