

TV-24" FLAT PANEL  
DLED,HDTV  
000031269 / 316937-01-000  
CORD-POWER,12VDC  
191991-01-000  
CABLE-AUDIO 1/8 TO RCA  
160574-01-000  
CABLE-RCA,2-WAY  
117420-02-000  
SCREW  
OMG02U-04-012 (4)  
WASHER  
OME02U-04-071 (4)  
TIE-WIRE,MOUNT  
155366-01-000  
DETAIL CA

LIGHT-STRIP  
190025-26-CHT  
CHANNEL-LIGHT  
190097-01-CHT

LIGHT-TAPE, LED  
187693-15-CHT

DISPLAY-TOUCH SCREEN  
194354-01-CHT

PANEL-CP PLUS,US  
192038-32-CHT  
SCREW  
G1108-08U (4)

CONTROL-CHARGE,SOLAR  
191278-01-000  
SCREW  
G11-08-12U (2)  
DETAIL AA

LAMP ASM-PORCH  
184120-01-CHT  
SCREW  
G39-06-10U (2)  
CONNECTOR  
058028-01-000 (2)

LIGHT-TAPE, LED  
187693-22-CHT

SPEAKER  
171547-01-CHT (2)  
SCREW  
000G39-10-12U (8)

READ-6

USB-CHARGER  
188312-01-000  
DETAIL CD

TV-24" FLAT PANEL  
DLED,HDTV  
000031269 / 316937-01-000  
PLATE-MOUNTING TV  
302643-01-CHT  
SCREW  
OMG02U-04-012 (4)  
WASHER  
OME02U-04-071 (4)  
CABLE-AUDIO 1/8 TO RCA  
160574-01-000  
CORD-POWER,12VDC  
191991-01-000  
DETAIL CA

OUTLET-COAX/  
12V EXTERIOR  
168516-01-CHT  
SCREW  
G39-08-16T (2)  
DETAIL CD

PORT-SOLAR, SINGLE  
191558-01-000  
SCREW  
G39-10-16U (4)  
DETAIL CG

WIRE ASM-COACH  
000006757 / 310442-01-000

WIRE ASM-SOLAR PANEL  
192440-02-000

WIRE ASM-COACH  
TO LEFT SIDE

CONVERTER  
184353-01-000  
SCREW  
000G67-10-12U (3)  
DETAIL CJ

SPLITTER  
DETAIL BB

MODULE-PCS  
193661-01-000  
SCREW  
G67-10-12U (4)

SPLITTER-RCA  
185898-01-000  
BRACKET  
156586-10-CHT  
SCREW  
G11-08-12U (4)  
DETAIL CB

SPLITTER-HDMI  
192138-01-000  
FASTENER-DUAL LOCK  
85774-01-000 (180 MM)  
85774-02-000 (180 MM)  
DETAIL CE

CROSSOVER BOX  
150140-01-000  
CROSSOVER COIL  
150140-02-000  
CLAMP  
10497-02-000  
SCREW  
G11-08-08U (4)  
SCREW  
G67-10-12B

WIRE ASM-WATER TANK  
151317-06-000

WIRE ASM-AUX TANK  
151316-05-000

TO WATER PUMP

SWITCH  
192810-04-CHT

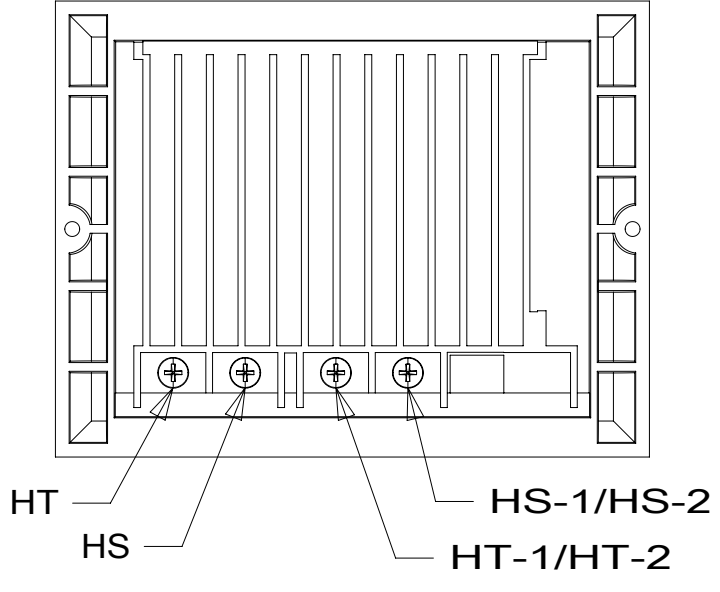
SWITCH  
DETAIL CC

GROMMET  
016188-10-000

PANEL ASM-SWITCH,  
6POS,ENTRY  
000010803 / 311096-01-CHT

SWITCH  
192810-02-CHT

POST-MOUNTING,TV  
181756-01-CHT  
PLATE-5 HOLE  
126706-05-CHT  
SCREW-MACH  
G24-10-32U (4)  
NUT  
D24-10-00U (4)



DETAIL AA 7 282

- 8 CUT TO LENGTH NEEDED TO FIT CABINET.
- 7 SEE WIRE ASM-SOLAR SYSTEM AND WIRE ASM-CHASSIS FOR ADDITIONAL INFORMATION.
- 6 TV IS TO BE ABLE TO BE VIEWED FROM INSIDE OR OUTSIDE THE COACH. INSTALL TV MOUNTING POST SO THAT TV ROTATES TOWARDS THE FRONT OF THE COACH AND NEVER FACES THE STOVE TOP. INSTALL SUPPLIED GRUB SCREWS IN BASE TO LIMIT ROTATION. SEE MANUFACTURERS INSTALLATION INSTRUCTIONS FOR ADDITIONAL INFORMATION.
- 5 CLEAN AND APPLY ADHESIVE PROMOTOR 87211-01-000 TO BOTH SURFACES. ATTACH DUAL LOCK TO UNDERSIDE OF SPLITTER AND APPLY TO FLOOR.
- 4 MOUNT ON EXTERIOR SURFACE OF VAN SIDEWALL.
- 3 PLACE CROSS LOCATOR ON SENSORS OVER DIMPLES ON TANK.
2. ROUTE TANK SENSOR WIRES SO THEY DO NOT PASS OVER SENSORS. USE WIRE TIE MOUNT 155366-01-000 AND WIRE TIE 8343-01-000 AS NEEDED. TANK SURFACE MUST BE CLEANED USING ISOPROPYL ALCOHOL AND PRIMED WITH PRIMER 94.
1. AT MINIMUM ALL WIRES TO BE SUPPORTED AND SECURED PER CODE REQUIREMENTS. USE CLAMP 10495 OR 10497 OR WIRE TIE 8343 OR 108046 AND SCREW G67-XX-XXX OR G56-XX-XXX AS APPROPRIATE FOR INSTALLATION.

NOTES:

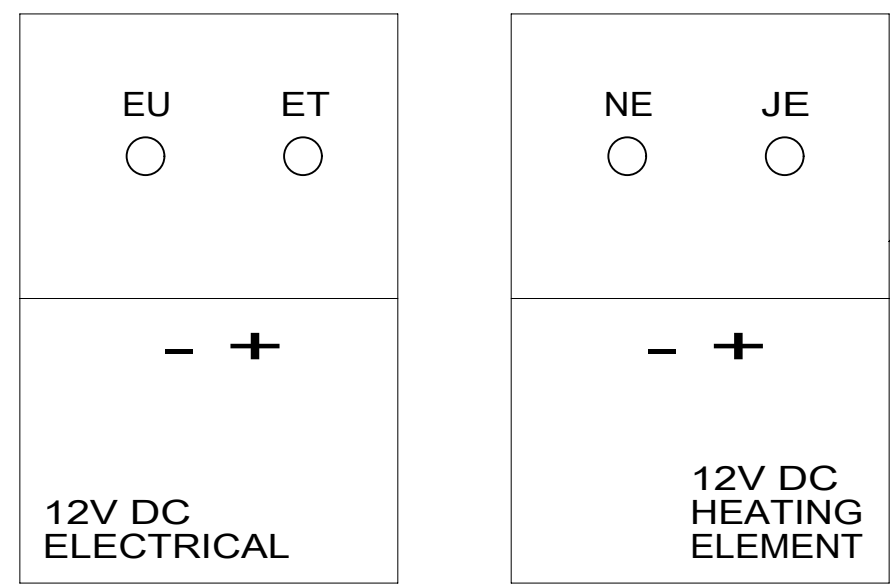
FOR ELECTRICAL TORQUE SPECIFICATIONS SEE DWG NO. 128783-01-000

FOR ELECTRICAL CALLOUTS SEE DWG NO. 121339-01-000

- 282 SOLAR PANEL - 100 WATT
- 68X TV - BEDROOM
- 68Y TV - MAIN
- 265 CODES/STANDARDS-CSA/CMVSS
- 1B1 CODES/STANDARDS USA
- 1B1 265

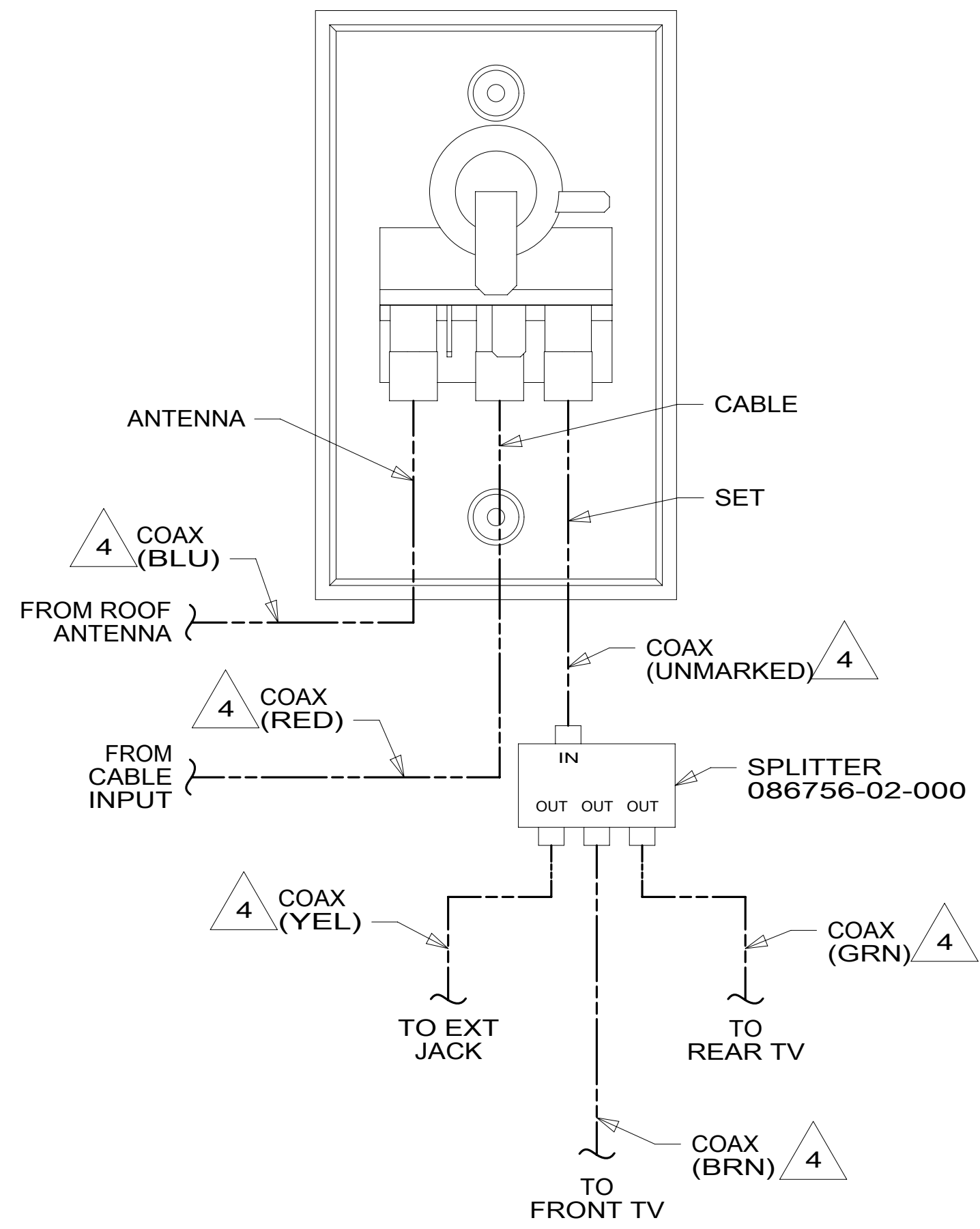
**WINNEBAGO**  
COPYRIGHT 2016 WINNEBAGO INDUSTRIES, INC.

DSNR:	ALL DIMENSIONS ARE IN MILLIMETERS	
DFFR:	MATERIAL:	
UNSPECIFIED TOLERANCES:	WHOLE DIM (X) :	3
	ONE-PLACE (X.X) :	1.5
	TWO-PLACE (X.XX) :	0.50
	ANGLE :	1°
REFER TO ES0018 FOR FASTENER TIGHTENING GUIDELINES	WEIGHT: (LBS)	FIRST USED:
		16 170A
DESCRIPTION: <b>WIRING INSTL-BODY,12V</b>		
SHEET: 1 OF 4	ITEM/PART NO: 000180117 / 30029501000	REV:
REF:	1	05-Oct-2016

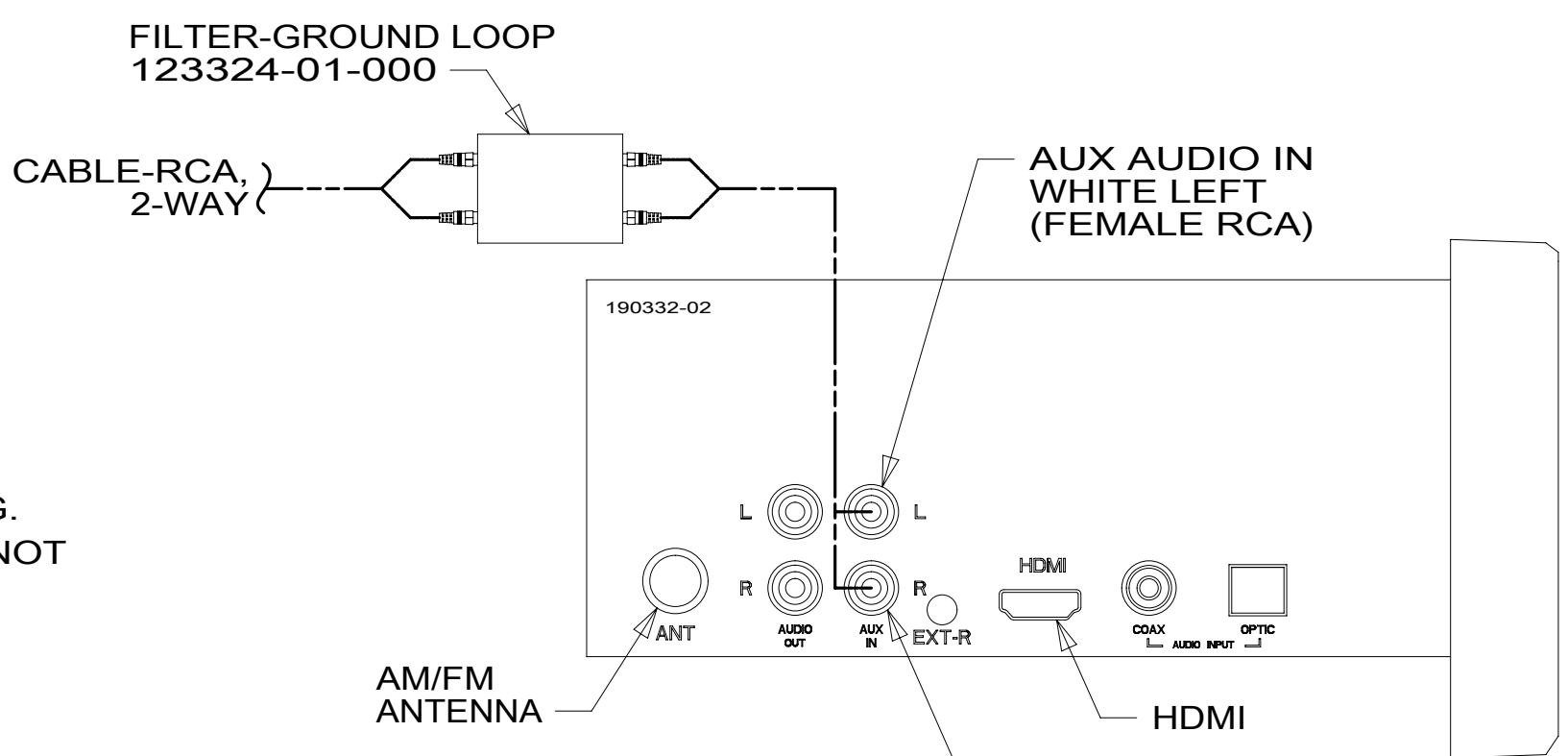


REFRIGERATOR  
12V CONNECTION  
PLATE (REF)

DETAIL BA



DETAIL BB



DETAIL BC

SENSOR-TEMP 192038-35-CHT  
PLATE-TEMP SENSOR 192254-01-CHT  
SCREW G11-08-08U (2)

SPEAKER 160868-01-CHT (2)  
GRILL 160868-02-CHT (2)  
SCREW G11-08-08U (8)

LIGHT-TAPE, LED 187693-22-CHT

READ-6

USB-CHARGER 188312-01-000  
DETAIL CD

SWITCH 192810-01-CHT

LIGHT-TAPE, LED 187693-11-CHT

WIRE ASM-OVHD 193716-01-000

RECEPTACLE-12V 132958-01-000  
DETAIL CD

TO FURNACE

TO WIRE ASM-CHASSIS  
DETAIL CF

WIRE ASM-COACH TO RIGHT SIDE

TO REFRIGERATOR  
DETAIL BA

LIGHT-TAPE, LED 187693-14-CHT

USB-CHARGER 188312-01-000  
DETAIL CD

RADIO 190332-02-000  
SCREW 76790-03-000 (4)  
DETAIL BC

PLATE-WALL 179004-02-CHT  
DETAIL BB

PLATE-WALL,RCA 167733-01-CHT  
SCREW G12-06-08U (2)

LPGD

SUBWOOFER 124884-01-000  
GRILL 151844-01-CHT  
SCREW G11-08-12T (4)

WIRE ASM-MAIN TANK 151317-02-000

SWITCH-WATER PUMP 108357-21-000  
ACTUATOR 108356-23-CHT

COAX (RED) ADAPTOR-COAX 82134-01-000  
NUT 82136-01-000  
LABEL 87236-01-000

MODULE-ONE PLACE 000031513 / 316976-01-000  
SCREW G67-10-12U (4)

CONTROL-MASTER, DISTRIBUTION 192813-01-CHT

STUD-ISOLATED 086233-01-000  
SCREW G67-10-12U (2)  
NUT D39-06-00B  
BOOT 77479-02-000  
DETAIL CK

NEGATIVE BAR 140031-01-CHT  
STUD-ISOLATED 086233-01-000 (2)  
NUT D39-06-00B (4)  
BOLT C26-05-12B (2)  
SCREW G67-10-12U (4)

FOR ELECTRICAL TORQUE SPECIFICATIONS SEE DWG NO. 128783-01-000

FOR ELECTRICAL CALLOUTS SEE DWG NO. 121339-01-000

265 CODES/STANDARDS-CSA/CMVSS

1B1 CODES/STANDARDS USA

1B1 265

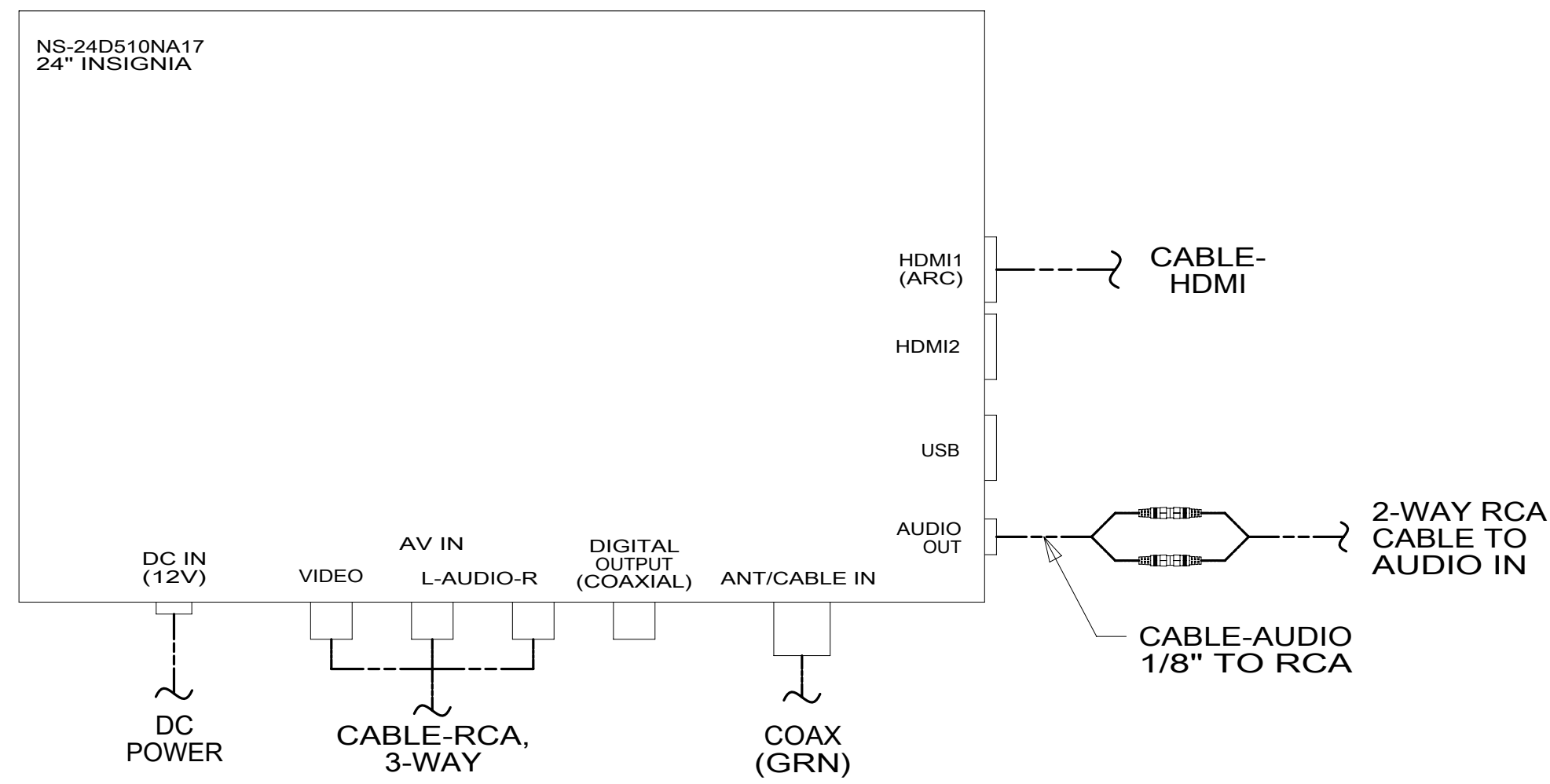
DESCRIPTION: WIRING INSTL-BODY, 12V

SHEET: 2 OF 4 ITEM/PART NO: 000180117 / 30029501000 REV

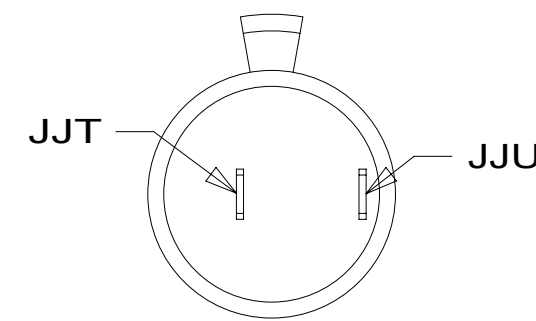
05-Oct-2016

- 4 COAX IS PART OF WIRE ASM-COACH.
- 3 COVER ALL WIRES AND CABLES WITH CONVOLUTED TUBING. SECURE TO TV BRACKET SO THAT WIRES AND CABLES DO NOT BECOME PINCHED.
- 2 MOUNTED IN EXTERIOR SERVICE CENTER.
1. AT MINIMUM ALL WIRES TO BE SUPPORTED AND SECURED PER CODE REQUIREMENTS. USE CLAMP 10495 OR 10497 OR WIRE TIE 8343 OR 108046 AND SCREW G67-XX-XXX OR G56-XX-XXX AS APPROPRIATE FOR INSTALLATION.

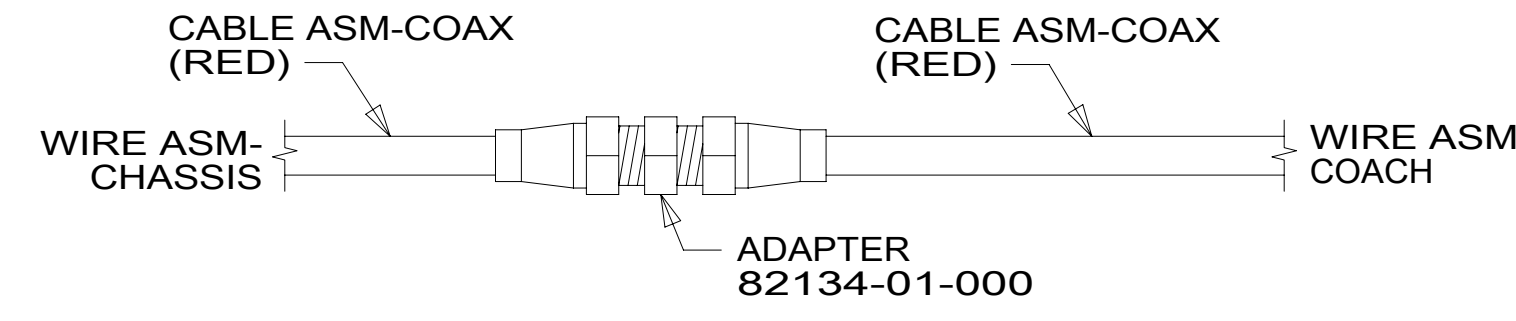
NOTES:



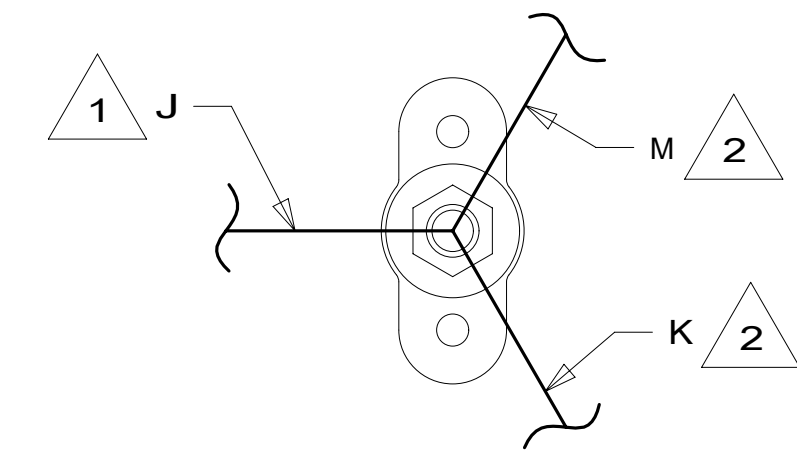
DETAIL CA



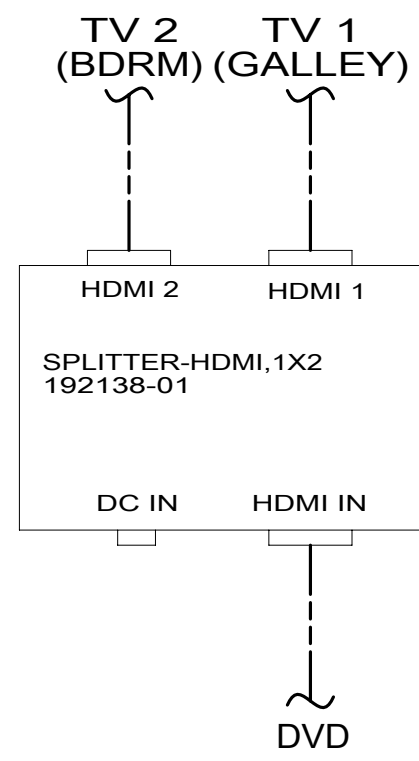
DETAIL CD



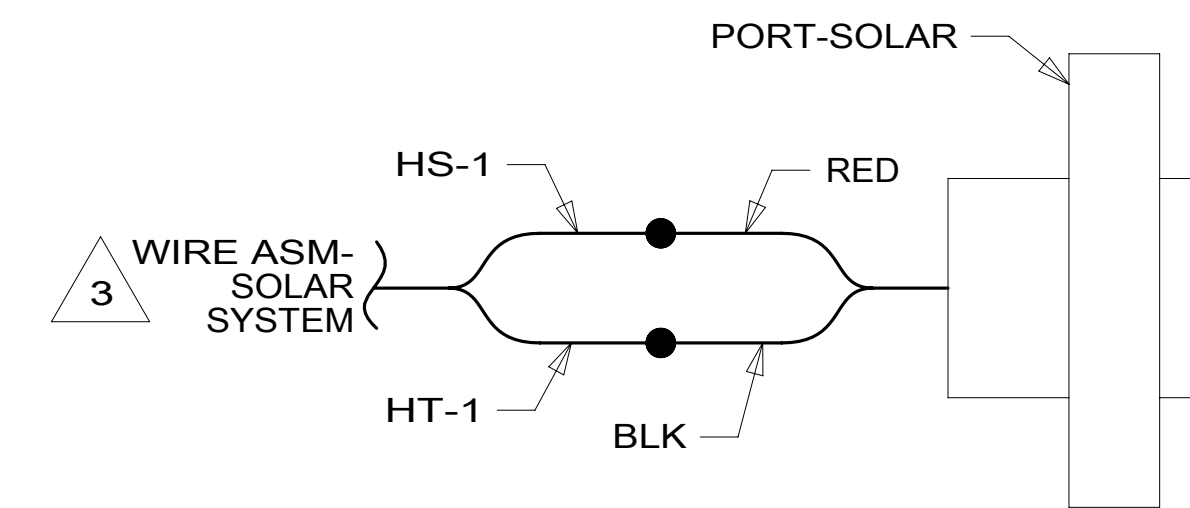
DETAIL CF



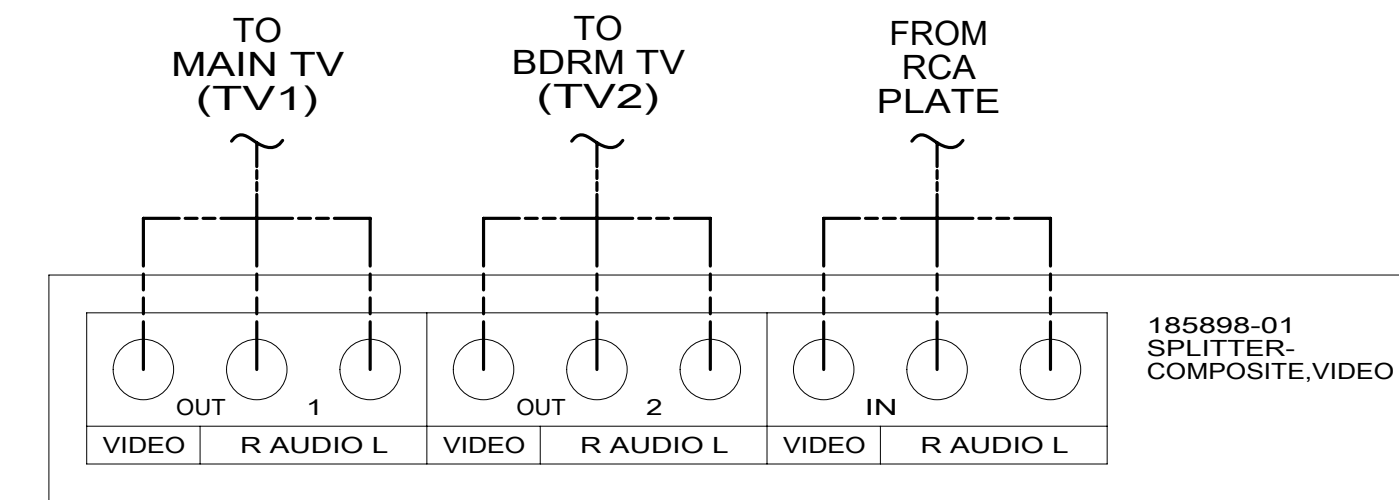
DETAIL CK



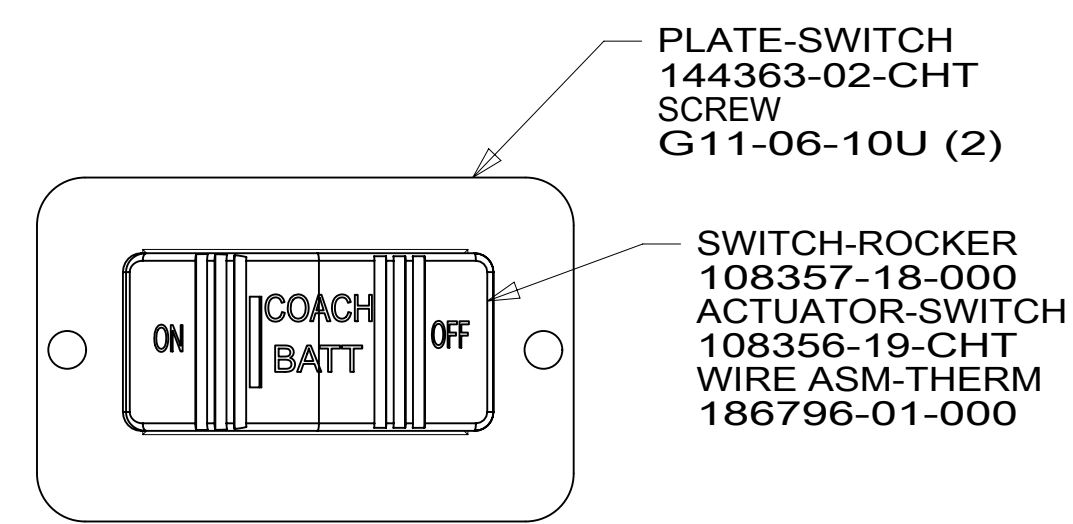
DETAIL CE



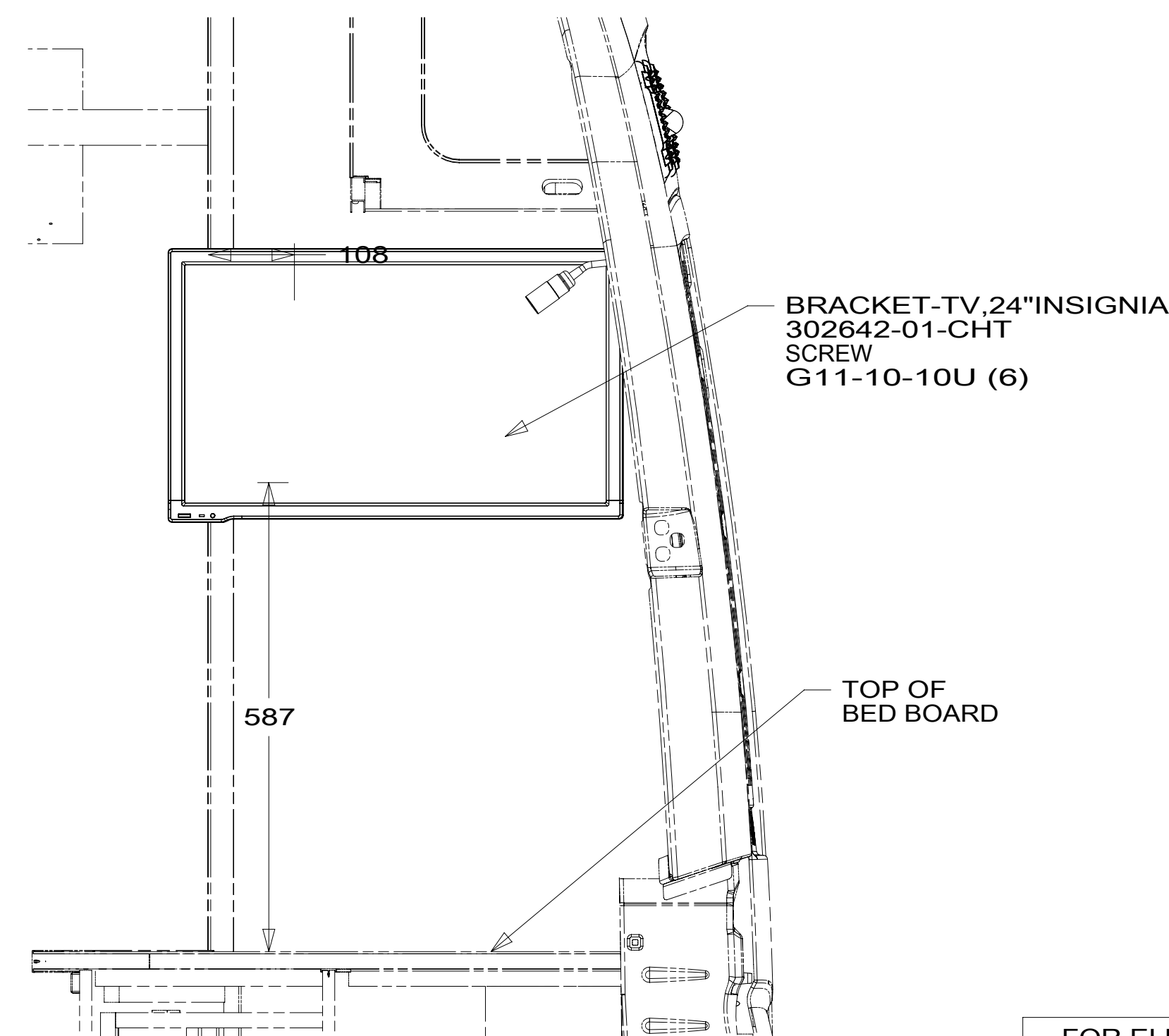
DETAIL CG 282



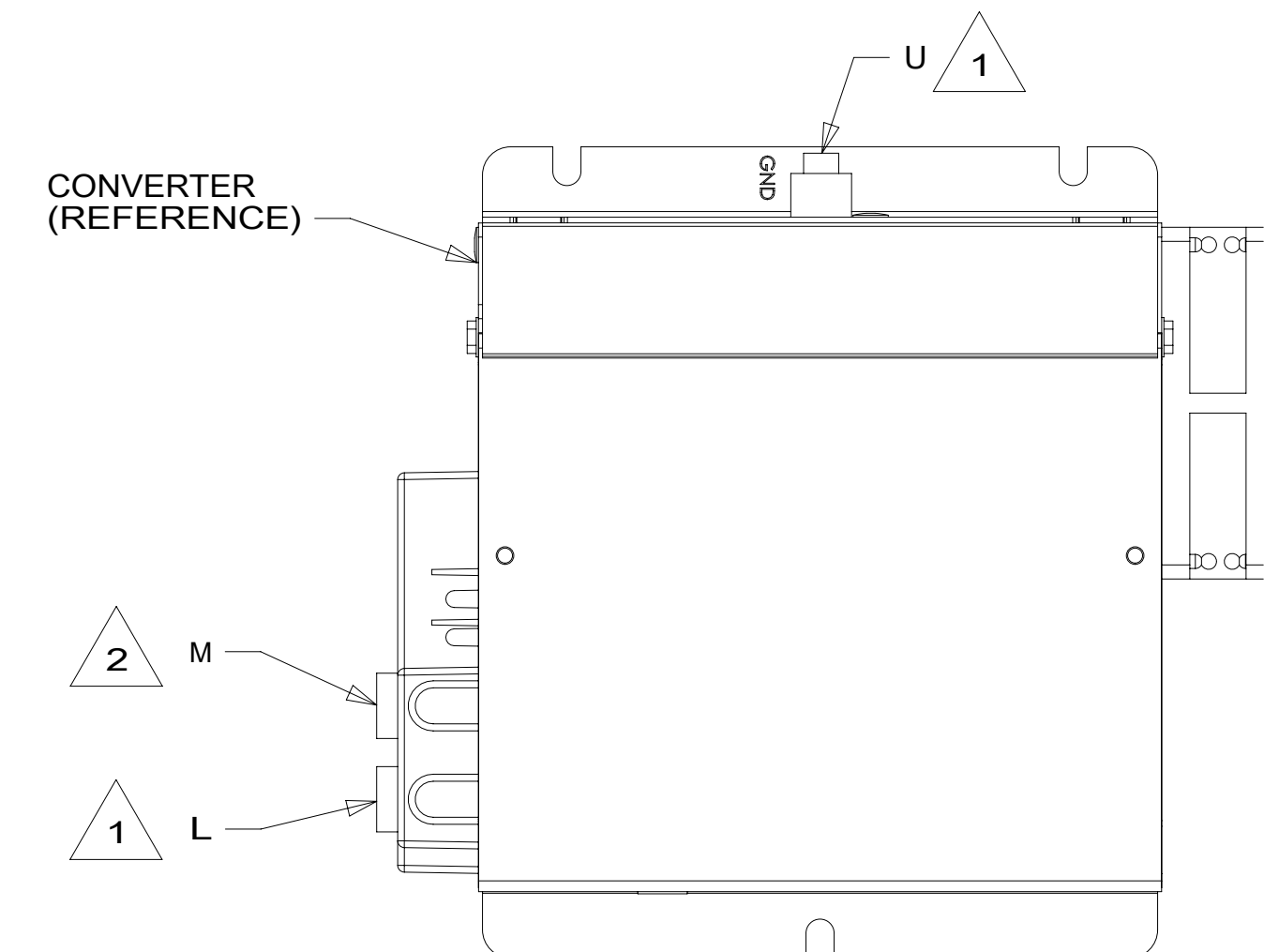
DETAIL CB



DETAIL CC



VIEW CH



DETAIL CJ

- NOTES:
- 3 SEE WIRE ASM-SOLAR SYSTEM AND WIRE ASM-CHASSIS FOR ADDITIONAL INFORMATION.
  - 2 CIRCUIT FROM WIRE ASM-COACH.
  - 1 CIRCUIT FROM WIRE ASM-CHASSIS.

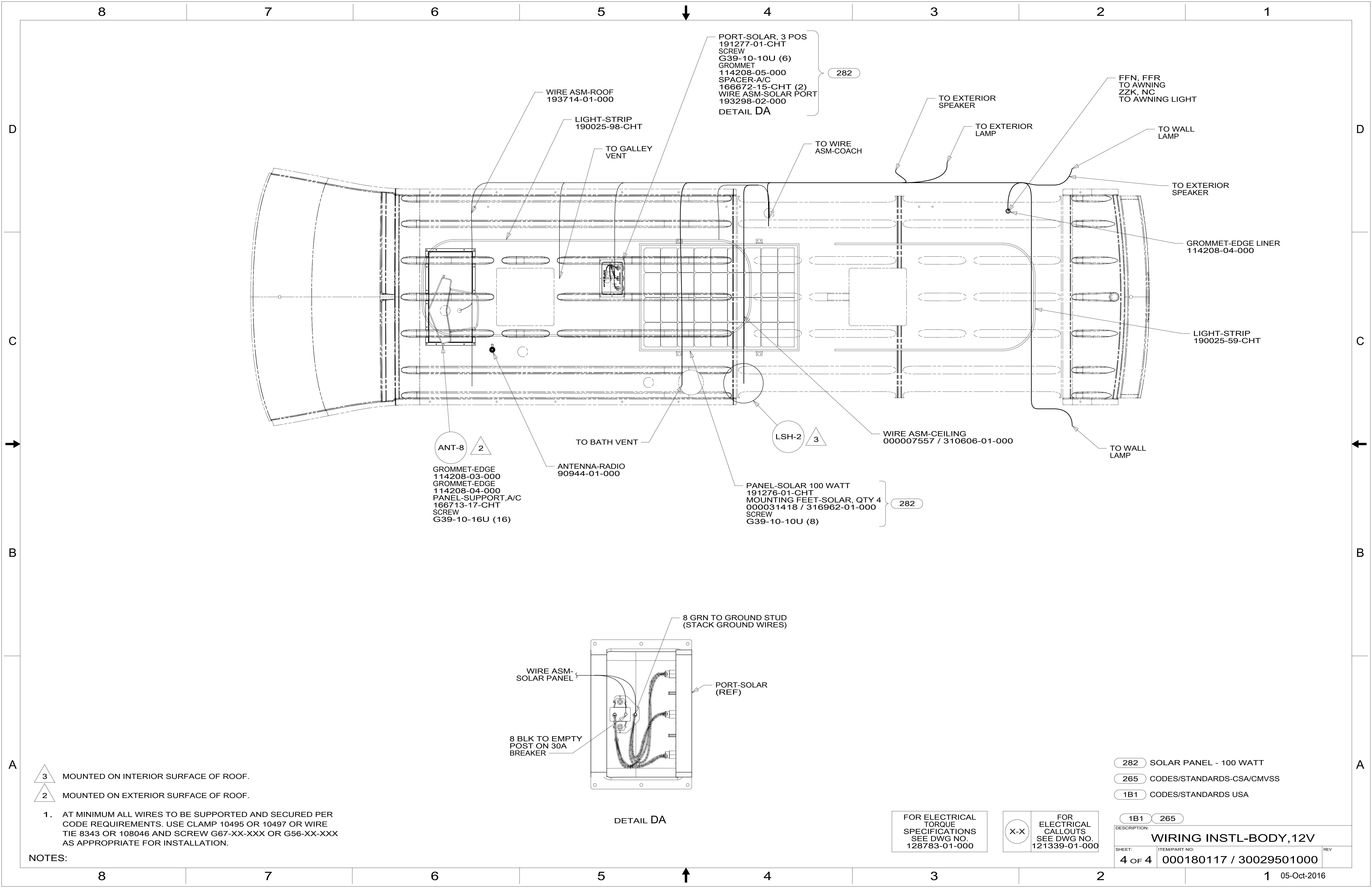
FOR ELECTRICAL TORQUE SPECIFICATIONS SEE DWG NO. 128783-01-000

FOR ELECTRICAL CALLOUTS SEE DWG NO. 121339-01-000

- 282 SOLAR PANEL - 100 WATT
- 265 CODES/STANDARDS-CSA/CMVSS
- 1B1 CODES/STANDARDS USA

DESCRIPTION:		1B1 265	
<b>WIRING INSTL-BODY, 12V</b>			
SHEET:	ITEM/PART NO.:	REV:	
3 OF 4	000180117 / 30029501000		





PORT-SOLAR, 3 POS  
 191277-01-CHT  
 SCREW  
 G39-10-10U (6)  
 GROMMET  
 114208-05-000  
 SPACER-A/C  
 166672-15-CHT (2)  
 WIRE ASM-SOLAR PORT  
 193298-02-000  
 DETAIL DA

WIRE ASM-ROOF  
 193714-01-000

LIGHT-STRIP  
 190025-98-CHT

TO GALLEY  
 VENT

TO WIRE  
 ASM-COACH

TO EXTERIOR  
 SPEAKER

TO EXTERIOR  
 LAMP

FFN, FFR  
 TO AWNING  
 ZZK, NC  
 TO AWNING LIGHT

TO WALL  
 LAMP

TO EXTERIOR  
 SPEAKER

GROMMET-EDGE LINER  
 114208-04-000

LIGHT-STRIP  
 190025-59-CHT

ANT-8 2

GROMMET-EDGE  
 114208-03-000  
 GROMMET-EDGE  
 114208-04-000  
 PANEL-SUPPORT, A/C  
 166713-17-CHT  
 SCREW  
 G39-10-16U (16)

TO BATH VENT

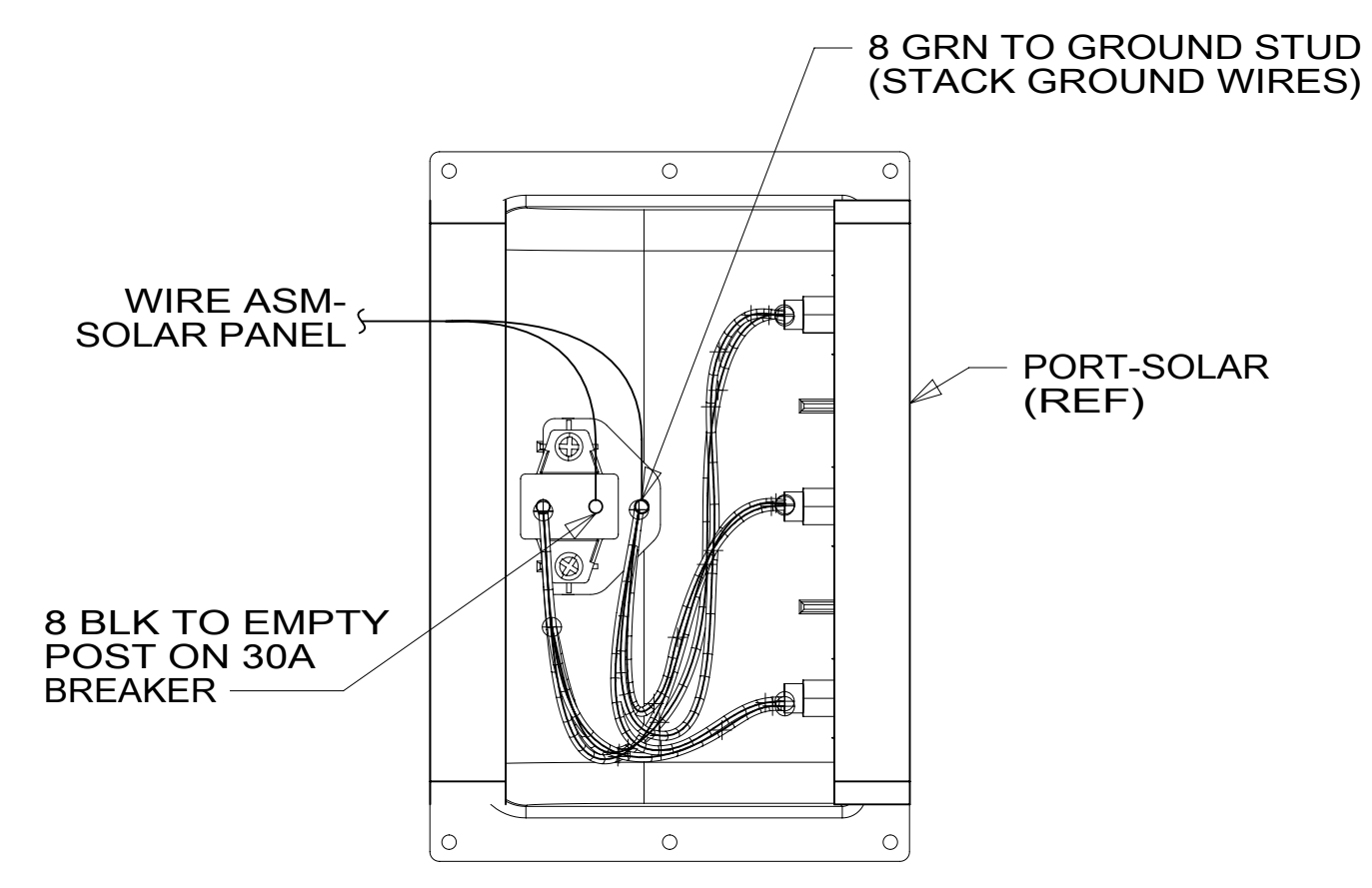
ANTENNA-RADIO  
 90944-01-000

LSH-2 3

WIRE ASM-CEILING  
 000007557 / 310606-01-000

TO WALL  
 LAMP

PANEL-SOLAR 100 WATT  
 191276-01-CHT  
 MOUNTING FEET-SOLAR, QTY 4  
 000031418 / 316962-01-000  
 SCREW  
 G39-10-10U (8)



DETAIL DA

- 3 MOUNTED ON INTERIOR SURFACE OF ROOF.
- 2 MOUNTED ON EXTERIOR SURFACE OF ROOF.

1. AT MINIMUM ALL WIRES TO BE SUPPORTED AND SECURED PER CODE REQUIREMENTS. USE CLAMP 10495 OR 10497 OR WIRE TIE 8343 OR 108046 AND SCREW G67-XX-XXX OR G56-XX-XXX AS APPROPRIATE FOR INSTALLATION.

NOTES:

- 282 SOLAR PANEL - 100 WATT
- 265 CODES/STANDARDS-CSA/CMVSS
- 1B1 CODES/STANDARDS USA

FOR ELECTRICAL TORQUE SPECIFICATIONS SEE DWG NO. 128783-01-000

FOR ELECTRICAL CALLOUTS SEE DWG NO. 121339-01-000

DESCRIPTION:		1B1 265	
<b>WIRING INSTL-BODY, 12V</b>			
SHEET:	ITEM/PART NO.:	REV:	
4 OF 4	000180117 / 30029501000		