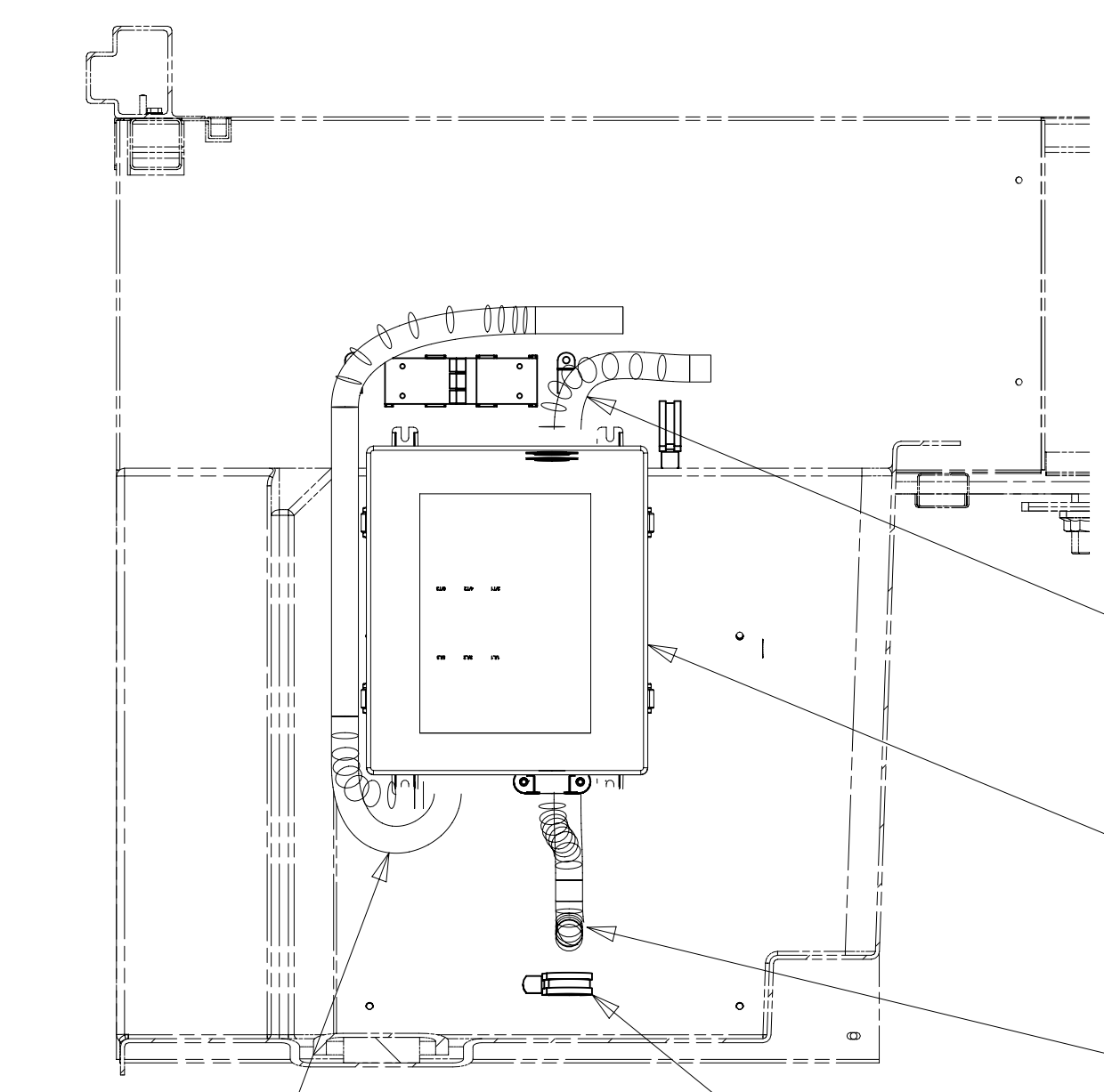
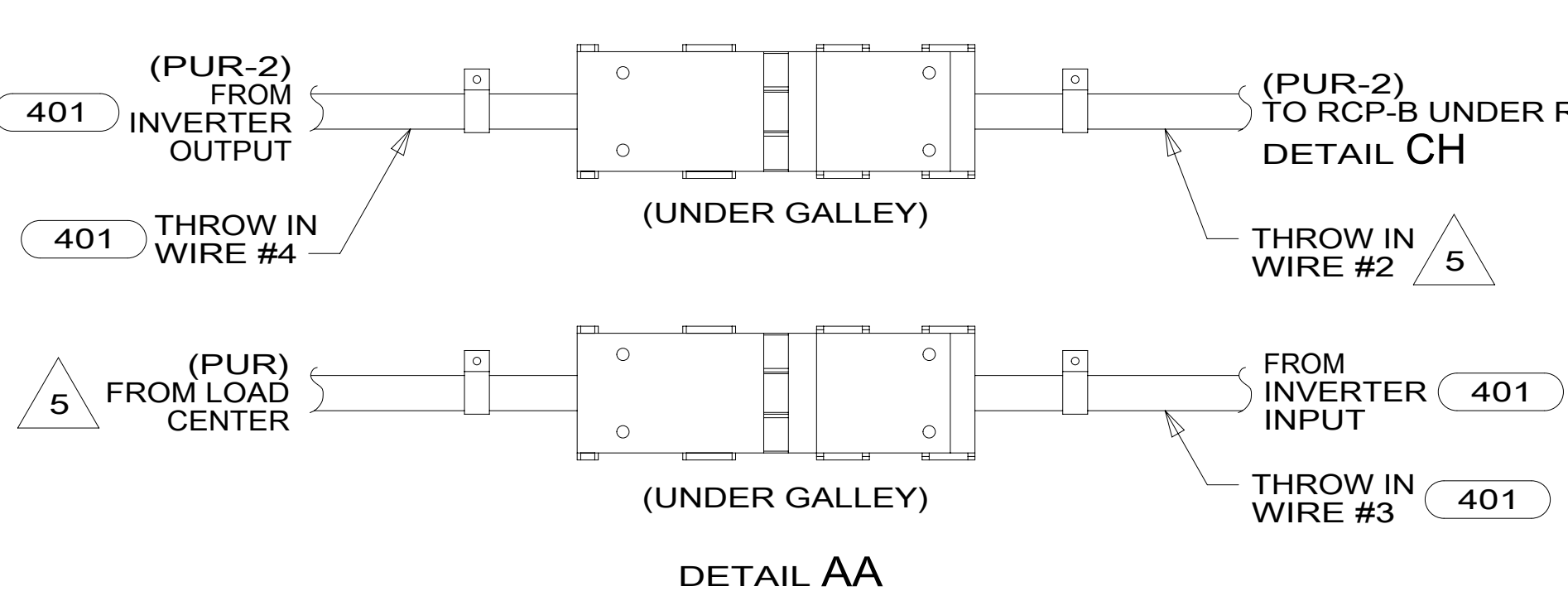
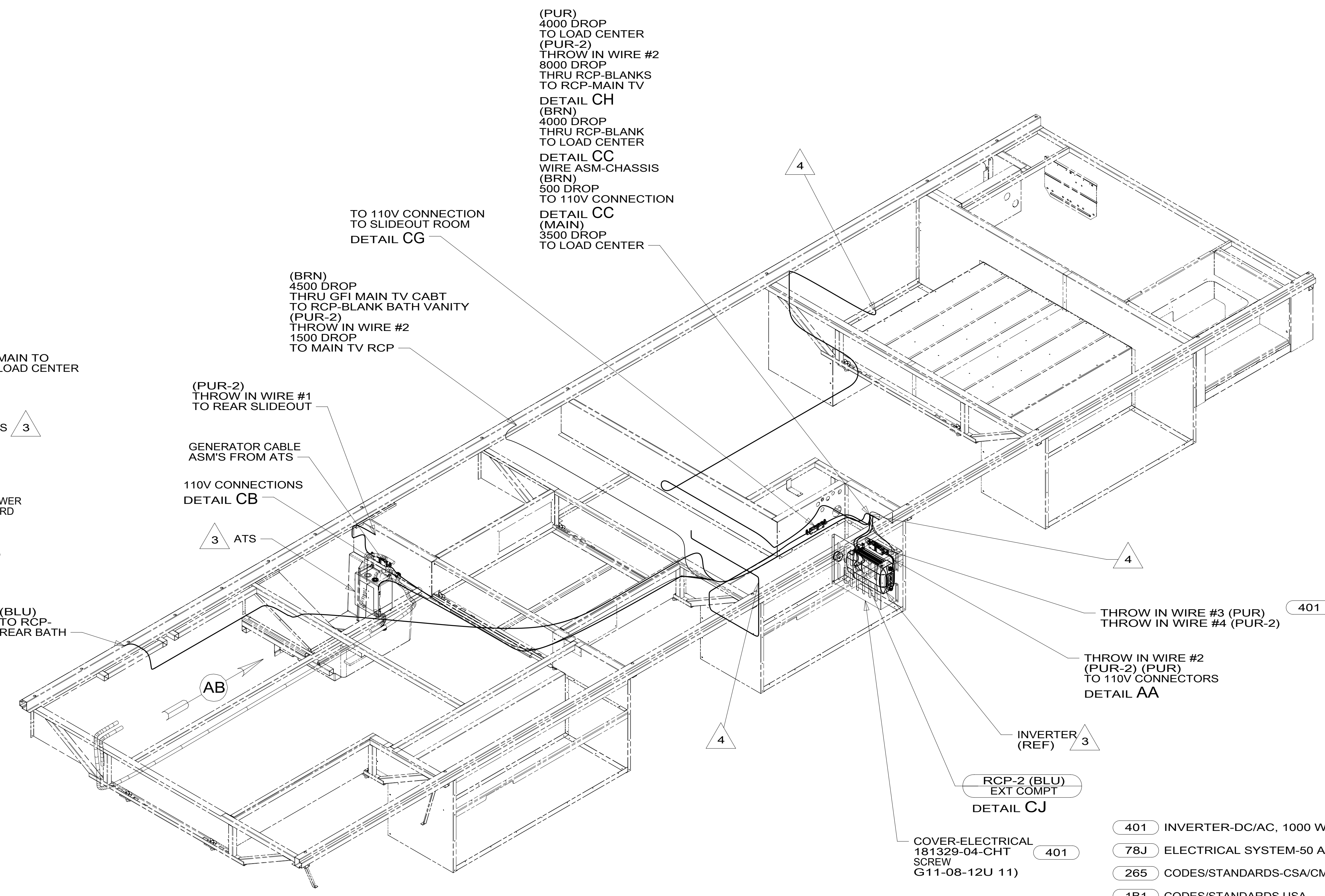


DRAWING NO.	FEATURES
300534-01	-----
300534-12	1B1 78J
300534-16	265 78J



VIEW AB



DETAIL AA

(PUR)
4000 DROP
TO LOAD CENTER
(PUR-2)
THROW IN WIRE #2
8000 DROP
THRU RCP-BLANKS
TO RCP-MAIN TV
DETAIL CH
(BRN)
4000 DROP
THRU RCP-BLANK
TO LOAD CENTER
DETAIL CC
WIRE ASM-CHASSIS
(BRN)
500 DROP
TO 110V CONNECTION
DETAIL CC
(MAIN)
3500 DROP
TO LOAD CENTER

(BRN)
4500 DROP
THRU GFI MAIN TV CABT
TO RCP-BLANK BATH VANITY
(PUR-2)
THROW IN WIRE #2
1500 DROP
TO MAIN TV RCP

(PUR-2)
THROW IN WIRE #1
TO REAR SLIDEOUT

GENERATOR CABLE
ASM'S FROM ATS

110V CONNECTIONS
DETAIL CB

TO 110V CONNECTION
TO SLIDEOUT ROOM
DETAIL CG

MAIN TO
LOAD CENTER

ATS 3

POWER
CORD

CLAMP
10497-03-000 (2)
SCREW
G67-10-08U (2)

TO
GENERATOR

(BLU)
TO RCP-
REAR BATH

THROW IN WIRE #3 (PUR) 401
THROW IN WIRE #4 (PUR-2)

THROW IN WIRE #2
(PUR-2) (PUR)
TO 110V CONNECTORS
DETAIL AA

INVERTER
(REF) 3

RCP-2 (BLU)
EXT COMPT
DETAIL CJ

COVER-ELECTRICAL
181329-04-CHT 401
SCREW
G11-08-12U 11)

401 INVERTER-DC/AC, 1000 WATT

78J ELECTRICAL SYSTEM-50 AMP

265 CODES/STANDARDS-CSA/CMVSS

1B1 CODES/STANDARDS USA

1B1 265



DSNR:		ALL DIMENSIONS ARE IN MILLIMETERS
DFFR:		
UNSPECIFIED TOLERANCES:		MATERIAL:
WHOLE DIM (X) :	3	
ONE-PLACE (X.X) :	1.5	
TWO-PLACE (X.XX) :	0.50	
ANGLE :	1°	
REFER TO ES0018 FOR FASTENER TIGHTENING GUIDELINES	WEIGHT: (LBS)	FIRST USED:

DESCRIPTION:
WIRING INSTL-BODY, 110V

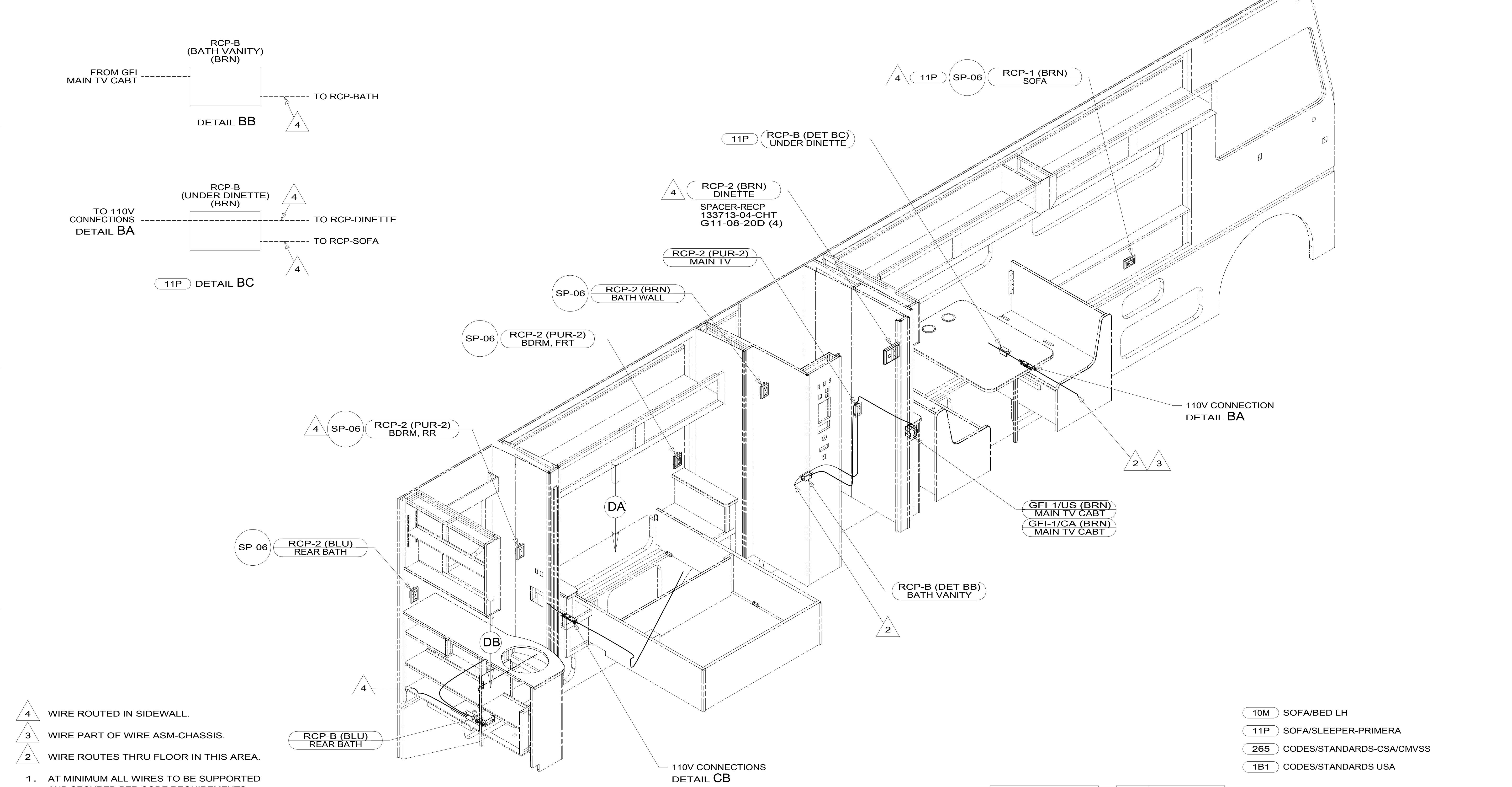
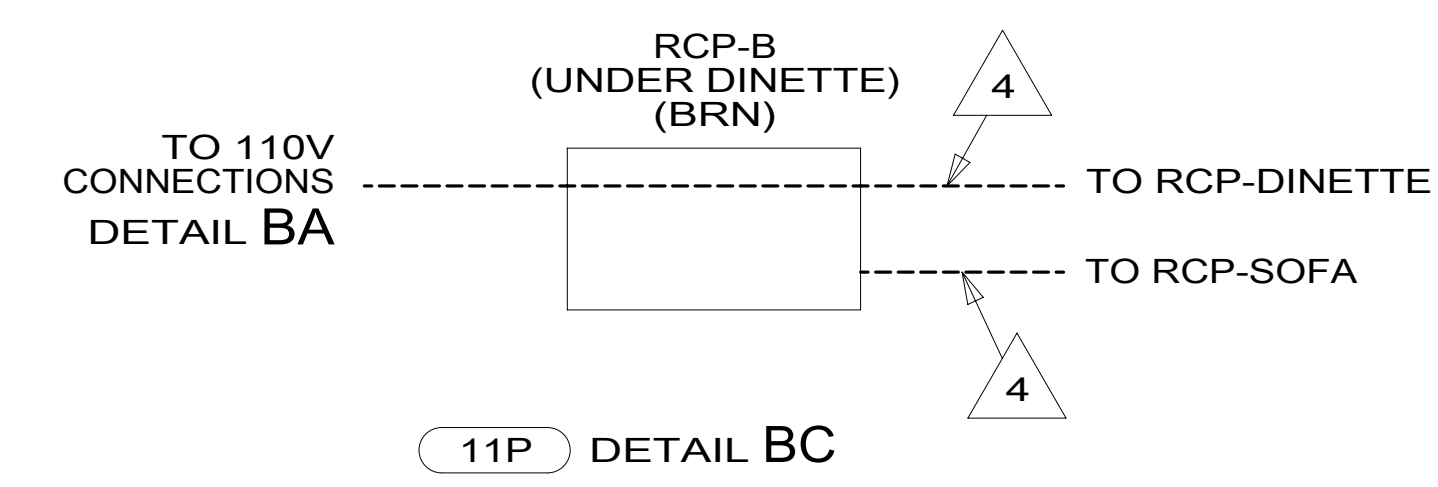
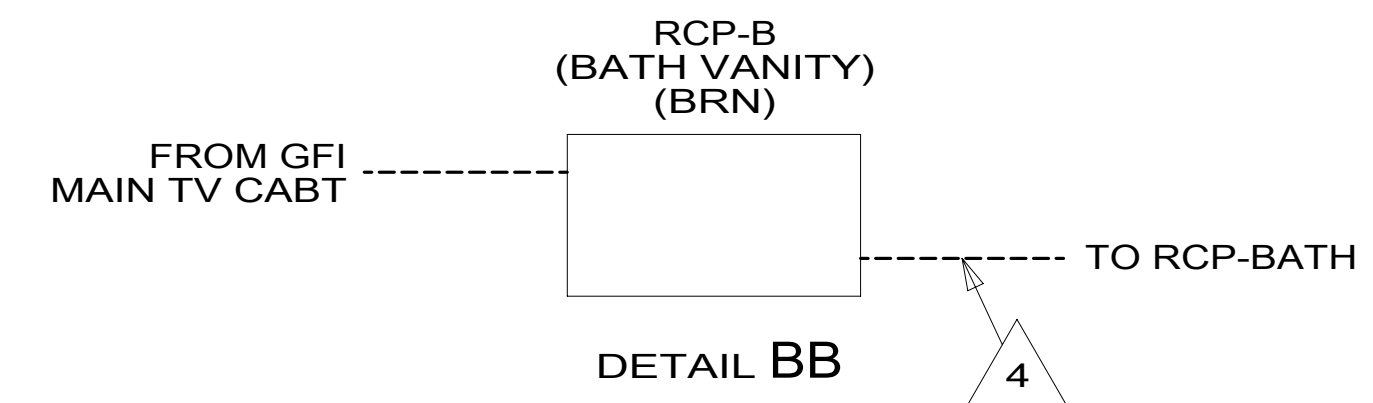
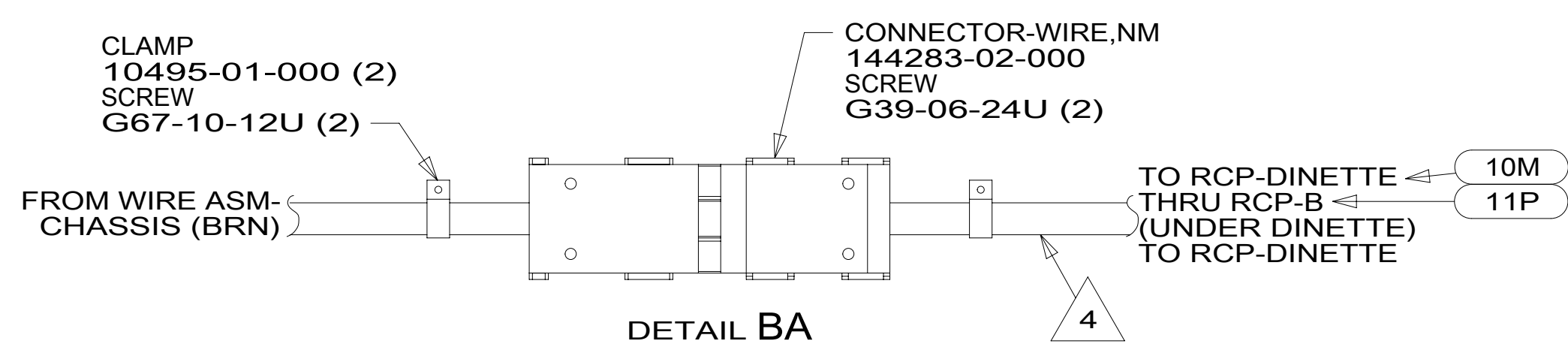
SHEET:	ITEM/PART NO.:	REV:
1 OF 5	000179681 / 30053401000	

FOR ELECTRICAL
TORQUE
SPECIFICATIONS
SEE DWG NO.
128783-01-000

FOR
ELECTRICAL
CALLOUTS
SEE DWG NO.
121339-01-000

- NOTES:
- 5 WITHOUT INVERTER THROW IN #2 (PUR-2) CONNECTS TO (PUR) FROM LOAD CENTER.
 - 4 WIRE ROUTED THROUGH FLOOR IN THIS AREA.
 - 3 SEE LOAD CENTER/ATS ASM FOR ADDITIONAL INFORMATION.
 2. WIRES ROUTED UNDER FLOOR.
 1. AT MINIMUM ALL WIRES TO BE SUPPORTED AND SECURED PER CODE REQUIREMENTS. USE CLAMP 10495 OR 10497 OR WIRE TIE 8343 OR 108046 AND SCREW G67-XX-XXX OR G56-XX-XXX AS APPROPRIATE FOR INSTALLATION.

*300534-A



- 4 WIRE ROUTED IN SIDEWALL.
- 3 WIRE PART OF WIRE ASM-CHASSIS.
- 2 WIRE ROUTES THRU FLOOR IN THIS AREA.

NOTES:
 1. AT MINIMUM ALL WIRES TO BE SUPPORTED AND SECURED PER CODE REQUIREMENTS. USE CLAMP 10495 OR 10497 OR WIRE TIE 8343 OR 108046 AND SCREW G67-XX-XXX OR G56-XX-XXX AS APPROPRIATE FOR INSTALLATION.

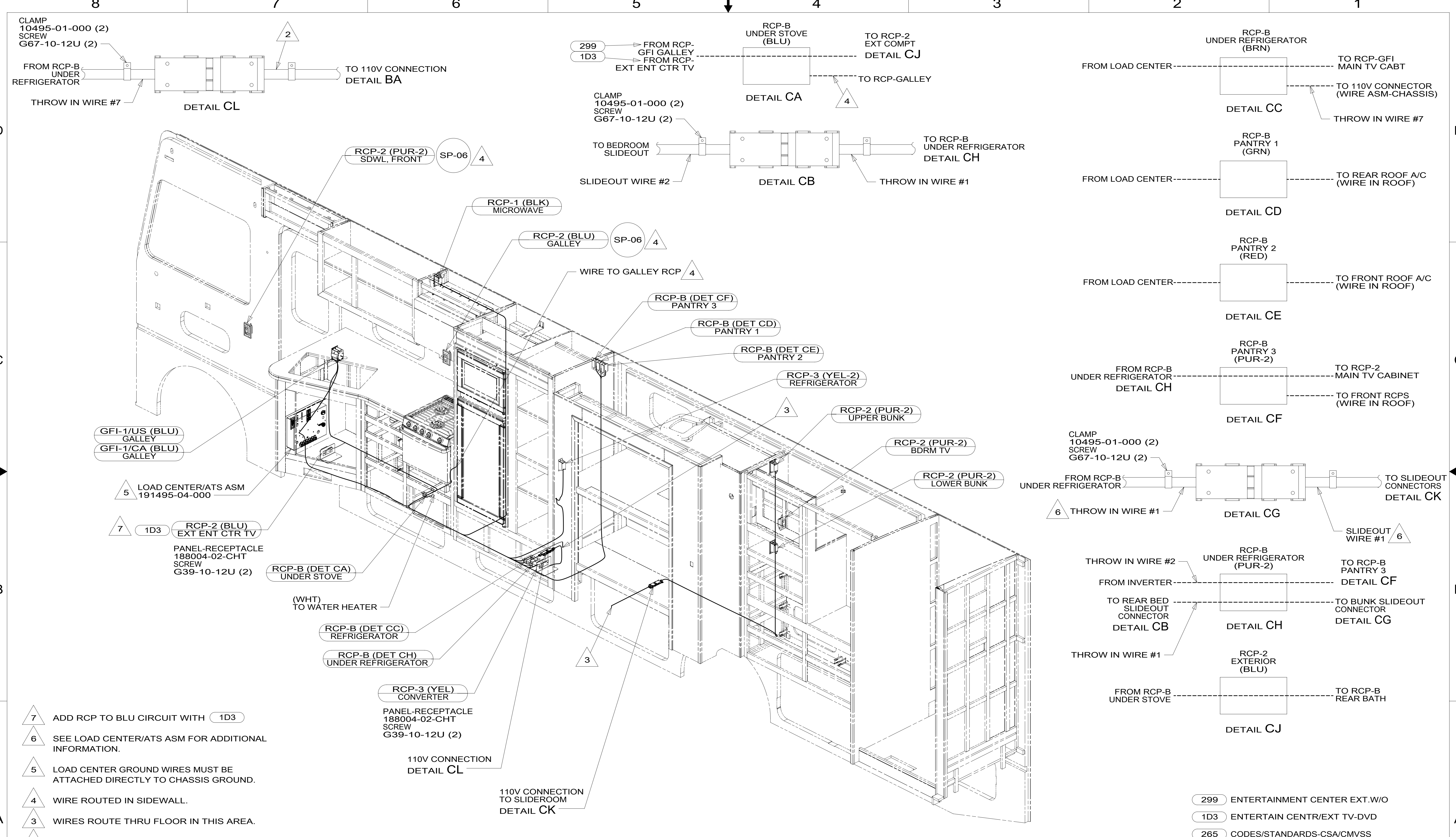
- 10M SOFA/BED LH
- 11P SOFA/SLEEPER-PRIMERA
- 265 CODES/STANDARDS-CSA/CMVSS
- 1B1 CODES/STANDARDS USA

FOR ELECTRICAL TORQUE SPECIFICATIONS SEE DWG NO. 128783-01-000

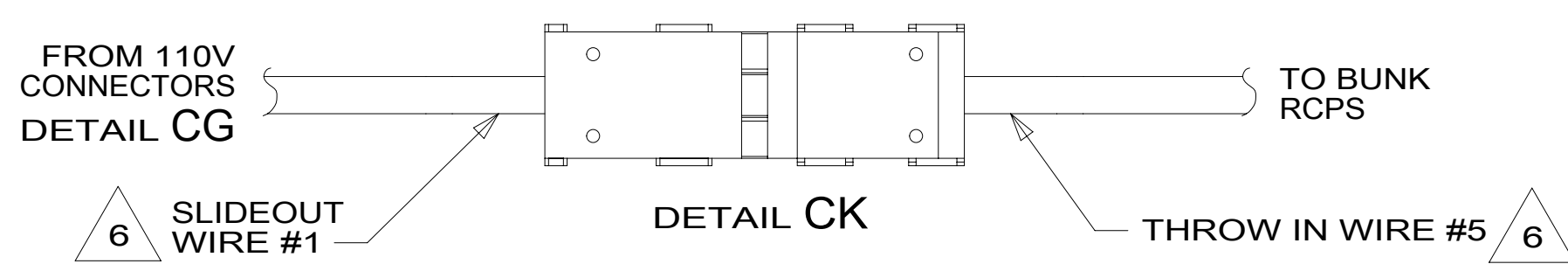
FOR ELECTRICAL CALLOUTS SEE DWG NO. 121339-01-000

DESCRIPTION:	1B1 265	
WIRING INSTL-BODY, 110V		
SHEET:	ITEM/PART NO:	REV
2 OF 5	000179681 / 30053401000	

*300534 *A



- NOTES:
- 1. AT MINIMUM ALL WIRES TO BE SUPPORTED AND SECURED PER CODE REQUIREMENTS. USE CLAMP 10495 OR 10497 OR WIRE TIE 8343 OR 108046 AND SCREW G67-XX-XXX OR G56-XX-XXX AS APPROPRIATE FOR INSTALLATION.
 - 2. WIRE PART OF WIRE ASM-CHASSIS.
 - 3. WIRES ROUTE THRU FLOOR IN THIS AREA.
 - 4. WIRE ROUTED IN SIDEWALL.
 - 5. LOAD CENTER GROUND WIRES MUST BE ATTACHED DIRECTLY TO CHASSIS GROUND.
 - 6. SEE LOAD CENTER/ATS ASM FOR ADDITIONAL INFORMATION.
 - 7. ADD RCP TO BLU CIRCUIT WITH 1D3



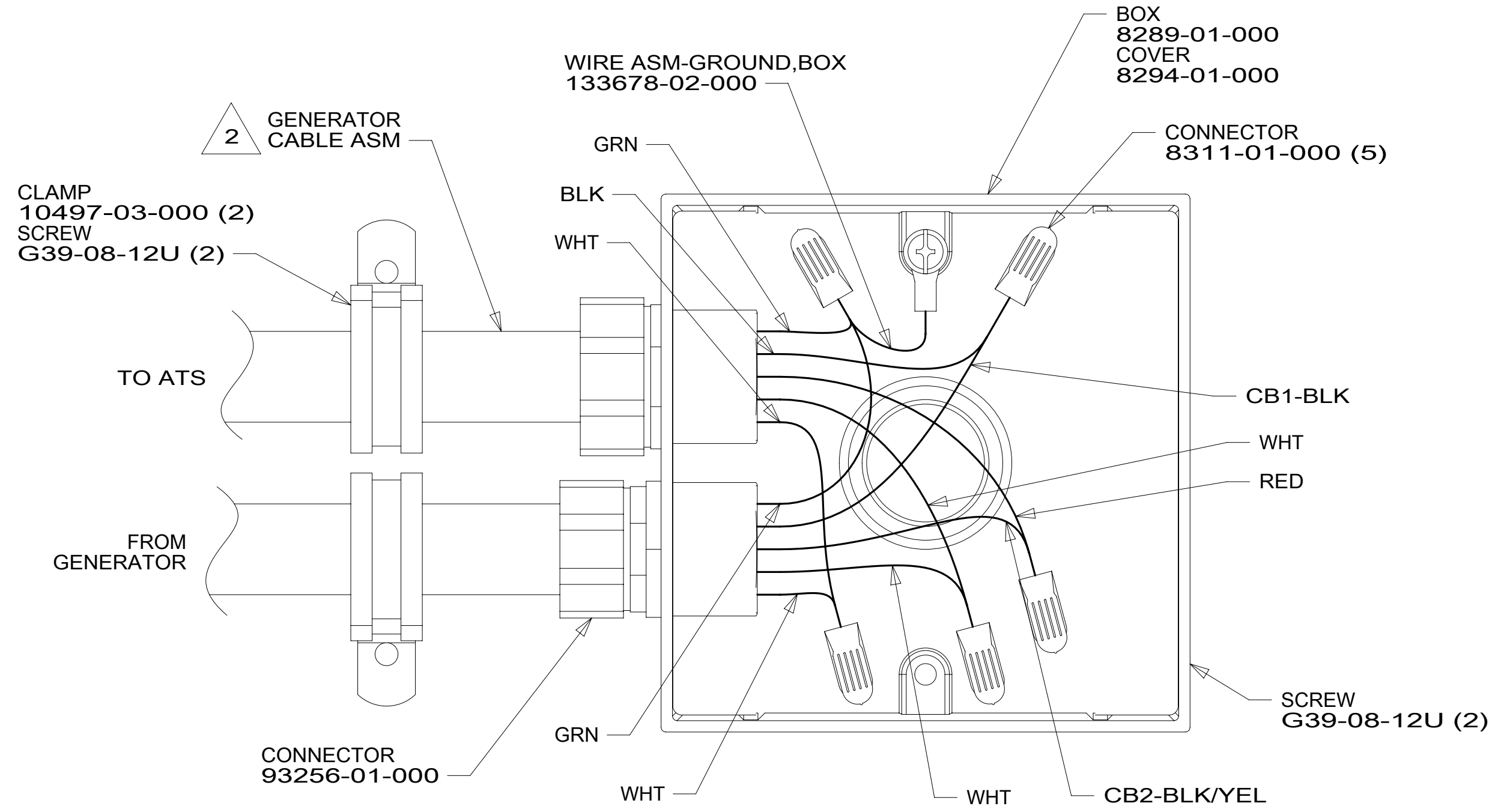
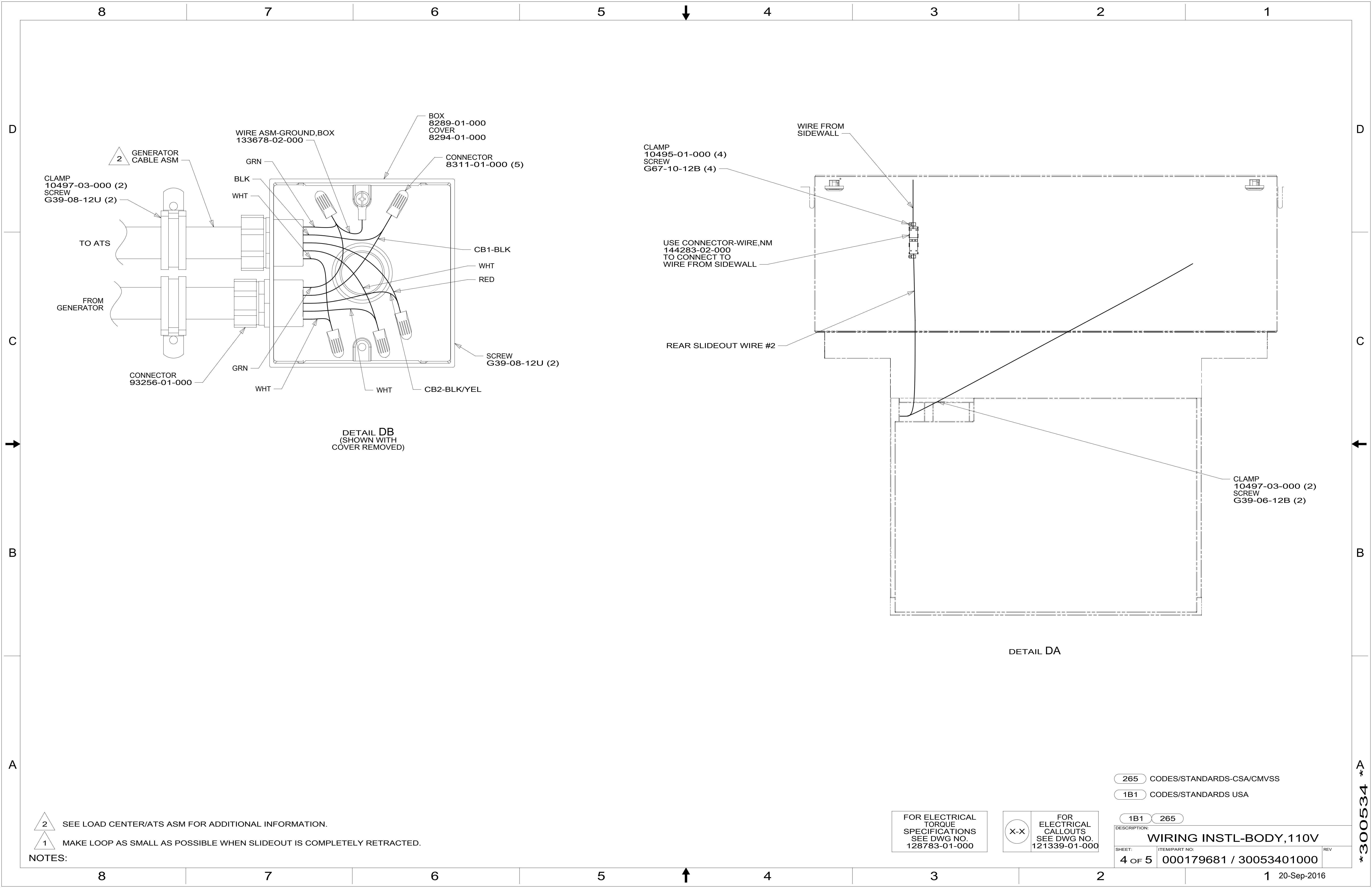
FOR ELECTRICAL TORQUE SPECIFICATIONS SEE DWG NO. 128783-01-000

FOR ELECTRICAL CALLOUTS SEE DWG NO. 121339-01-000

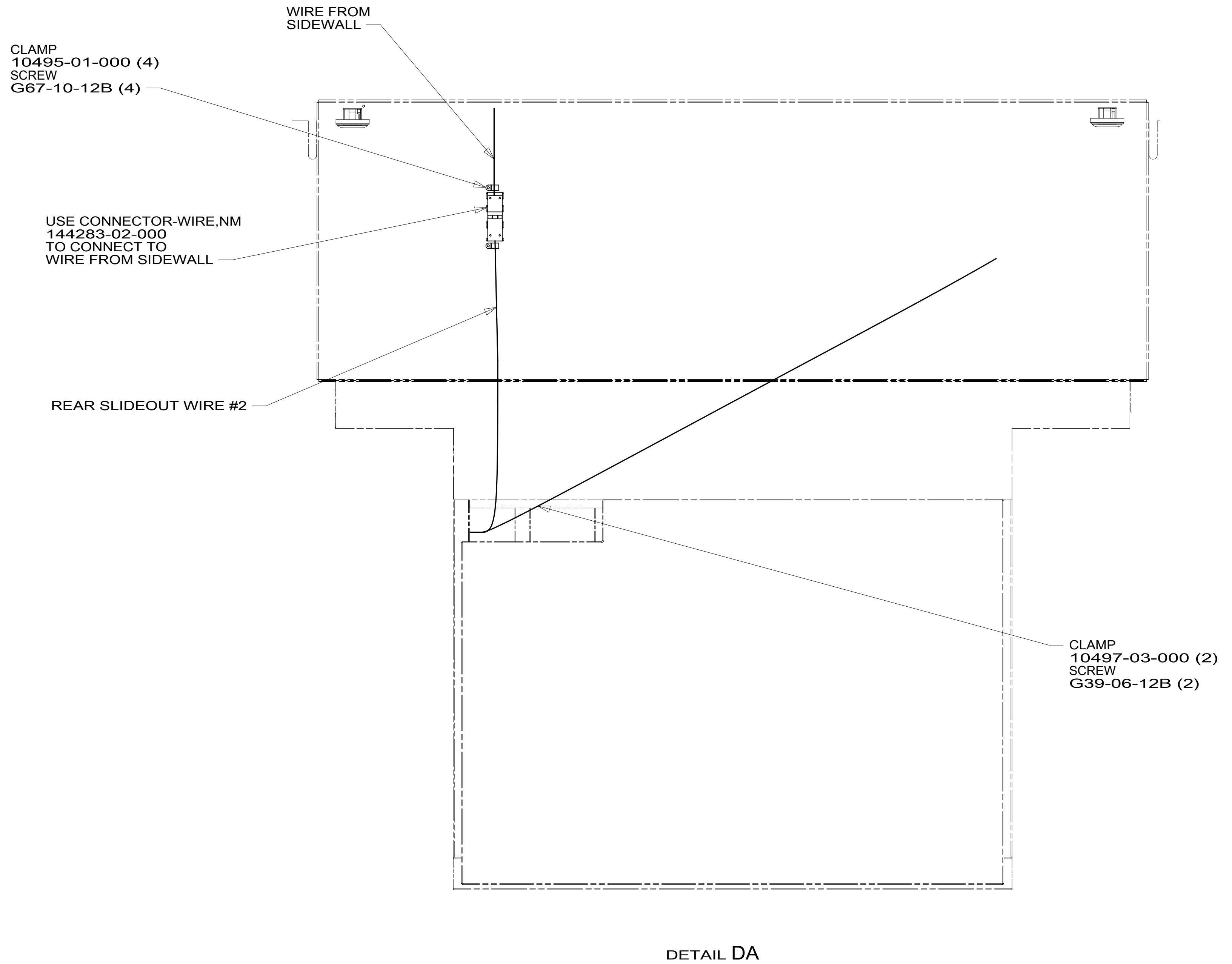
- 299 ENTERTAINMENT CENTER EXT.W/O
- 1D3 ENTERTAIN CENTR/EXT TV-DVD
- 265 CODES/STANDARDS-CSA/CMVSS
- 1B1 CODES/STANDARDS USA

DESCRIPTION:	
WIRING INSTL-BODY, 110V	
SHEET: 3 OF 5	ITEM/PART NO: 000179681 / 30053401000
REV 1 20-Sep-2016	

*300534 *A



DETAIL DB
(SHOWN WITH
COVER REMOVED)



DETAIL DA

- NOTES:
- 2 SEE LOAD CENTER/ATS ASM FOR ADDITIONAL INFORMATION.
 - 1 MAKE LOOP AS SMALL AS POSSIBLE WHEN SLIDEOUT IS COMPLETELY RETRACTED.

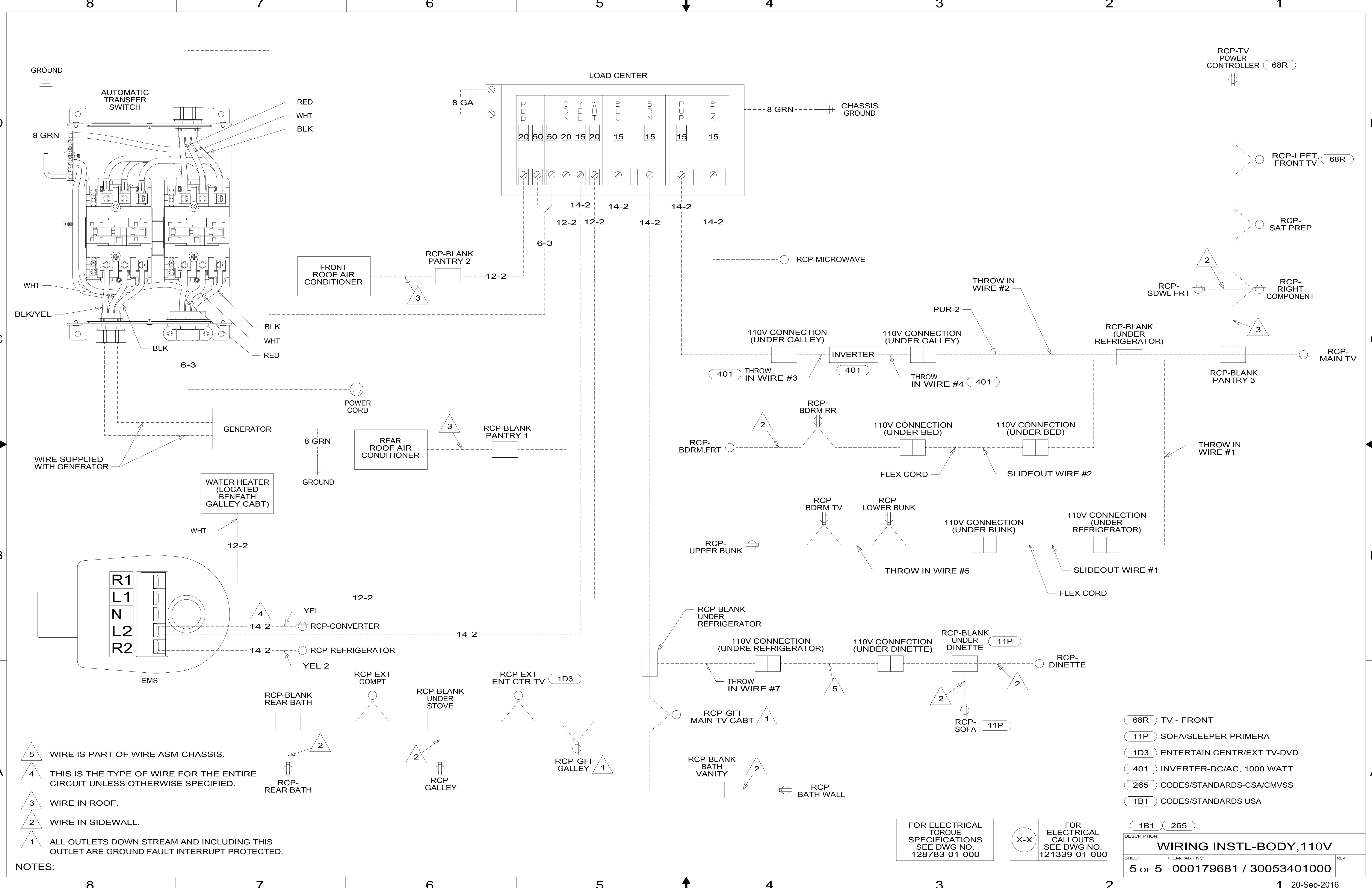
FOR ELECTRICAL
TORQUE
SPECIFICATIONS
SEE DWG NO.
128783-01-000

FOR
ELECTRICAL
CALLOUTS
SEE DWG NO.
121339-01-000

- 265 CODES/STANDARDS-CSA/CMVSS
- 1B1 CODES/STANDARDS USA

DESCRIPTION:		1B1	265
WIRING INSTL-BODY, 110V			
SHEET:	ITEM/PART NO.:	REV	
4 OF 5	000179681 / 30053401000		

*300534 *A



- NOTES:
- 5 WIRE IS PART OF WIRE ASM-CHASSIS.
 - 4 THIS IS THE TYPE OF WIRE FOR THE ENTIRE CIRCUIT UNLESS OTHERWISE SPECIFIED.
 - 3 WIRE IN ROOF.
 - 2 WIRE IN SIDEWALL.
 - 1 ALL OUTLETS DOWN STREAM AND INCLUDING THIS OUTLET ARE GROUND FAULT INTERRUPT PROTECTED.

- 68R TV - FRONT
- 11P SOFA/SLEEPER-PRIMERA
- 1D3 ENTERTAIN CTR/EXT TV-DVD
- 401 INVERTER-DC/AC, 1000 WATT
- 265 CODES/STANDARDS-CSA/CMVSS
- 1B1 CODES/STANDARDS USA

FOR ELECTRICAL TORQUE SPECIFICATIONS SEE DWG NO. 128783-01-000

FOR ELECTRICAL CALLOUTS SEE DWG NO. 121339-01-000

DESCRIPTION:
WIRING INSTL-BODY, 110V

SHEET: 5 OF 5 ITEM/PART NO.: 000179681 / 30053401000 REV: 1

20-Sep-2016

300534