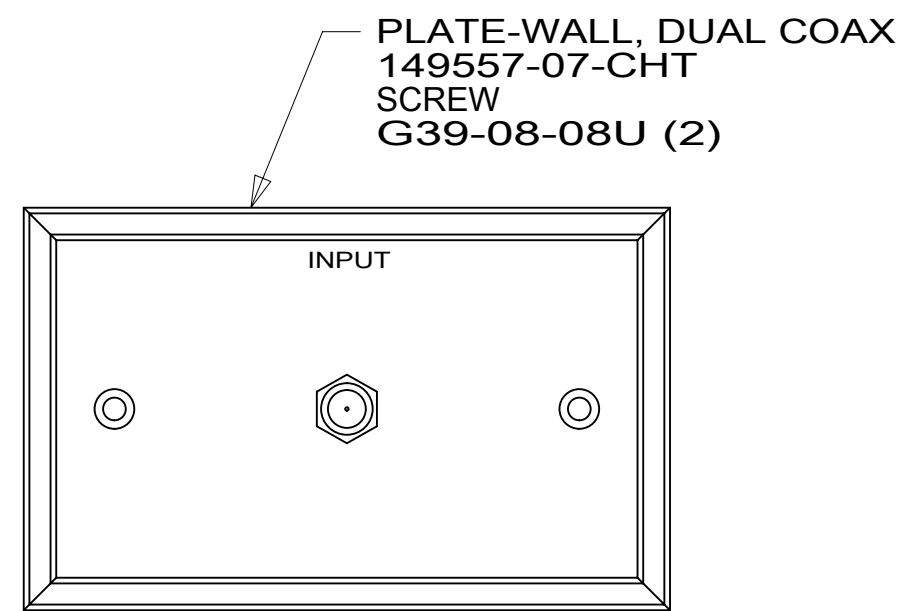
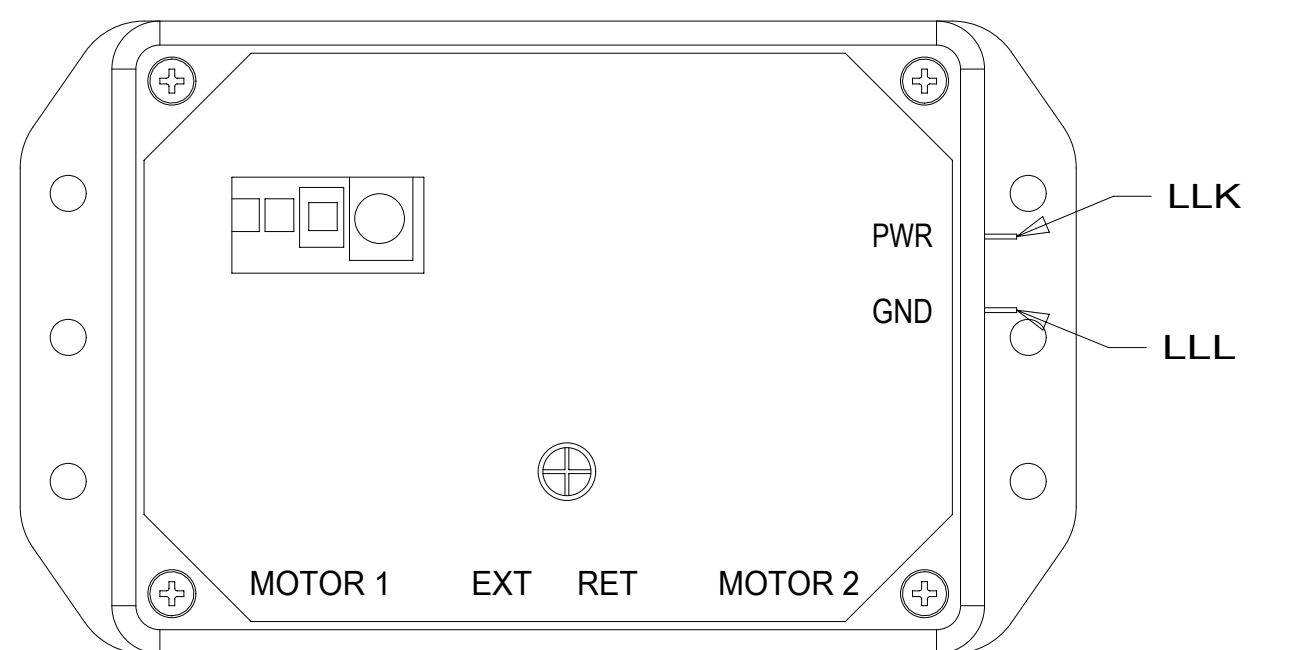


8 7 6 5 4 3 2 1

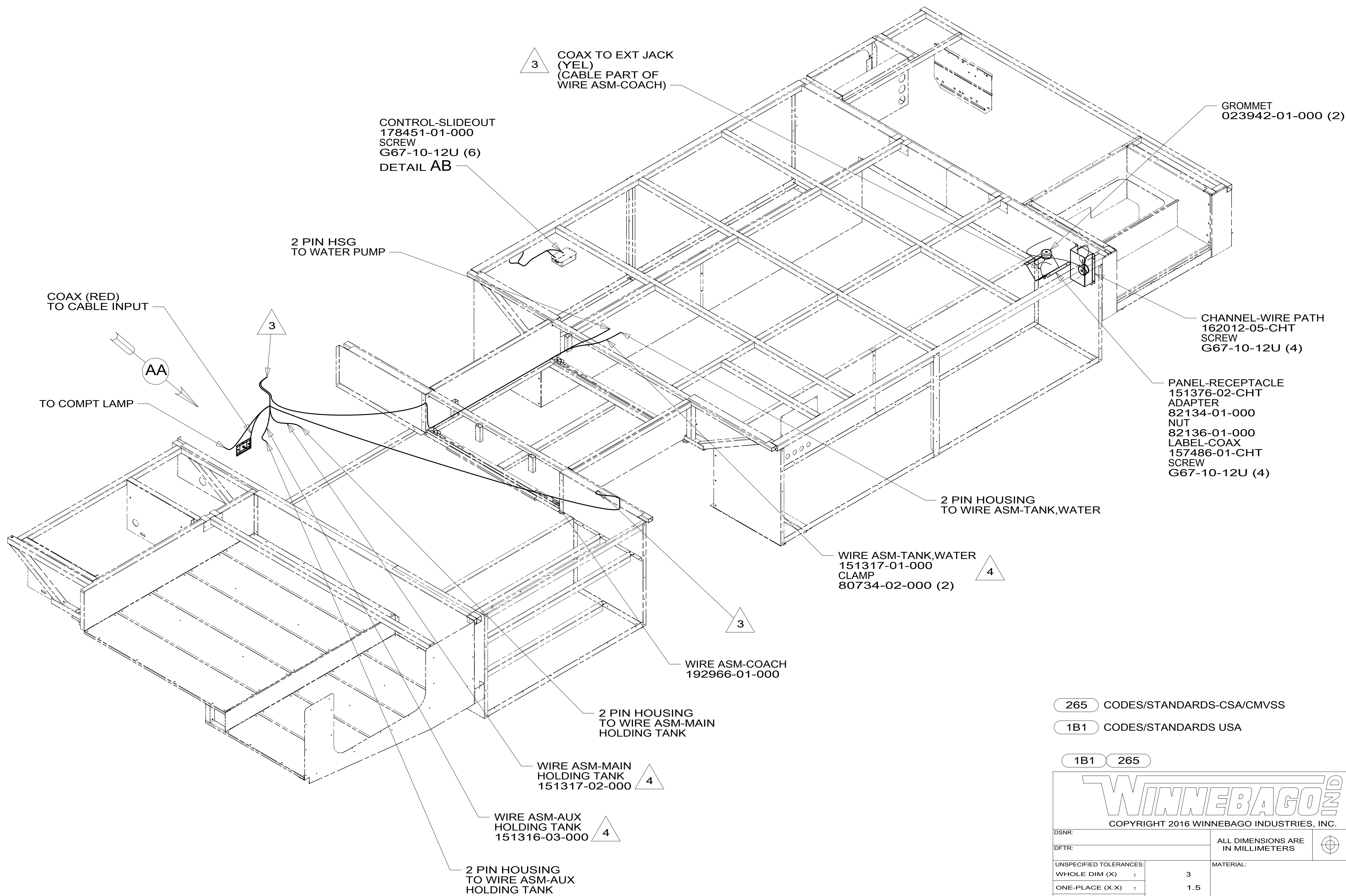


VIEW AA



DETAIL AB

HARNESS-SLIDEOUT MOTOR 178398-01-000
 ROUTE TO REAR MOTOR
 DR
 DU
 ROUTE TO FRONT MOTOR
 HARNESS-SLIDEOUT MOTOR 178398-03-000



4 PLACE CROSS LOCATOR ON SENSORS OVER DIMPLES ON TANK.

3 WIRE PASSES THROUGH FLOOR IN THIS AREA.

2. ROUTE TANK SENSOR WIRES SO THEY DO NOT PASS OVER SENSORS. USE WIRE TIE MOUNT 155366-01-000 AND WIRE TIE 8343-01-000 AS NEEDED. TANK SURFACE MUST BE CLEANED USING ISOPROPYL ALCOHOL AND PRIMED WITH PRIMER 94.

1. AT MINIMUM ALL WIRES TO BE SUPPORTED AND SECURED PER CODE REQUIREMENTS. USE CLAMP 10495 OR 10497 OR WIRE TIE 8343 OR 108046 AND SCREW G67-XX-XXX OR G56-XX-XXX AS APPROPRIATE FOR INSTALLATION.

NOTES:

FOR ELECTRICAL TORQUE SPECIFICATIONS SEE DWG NO. 128783-01-000

FOR ELECTRICAL CALLOUTS SEE DWG NO. 121339-01-000

265 CODES/STANDARDS-CSA/CMVSS

1B1 CODES/STANDARDS USA

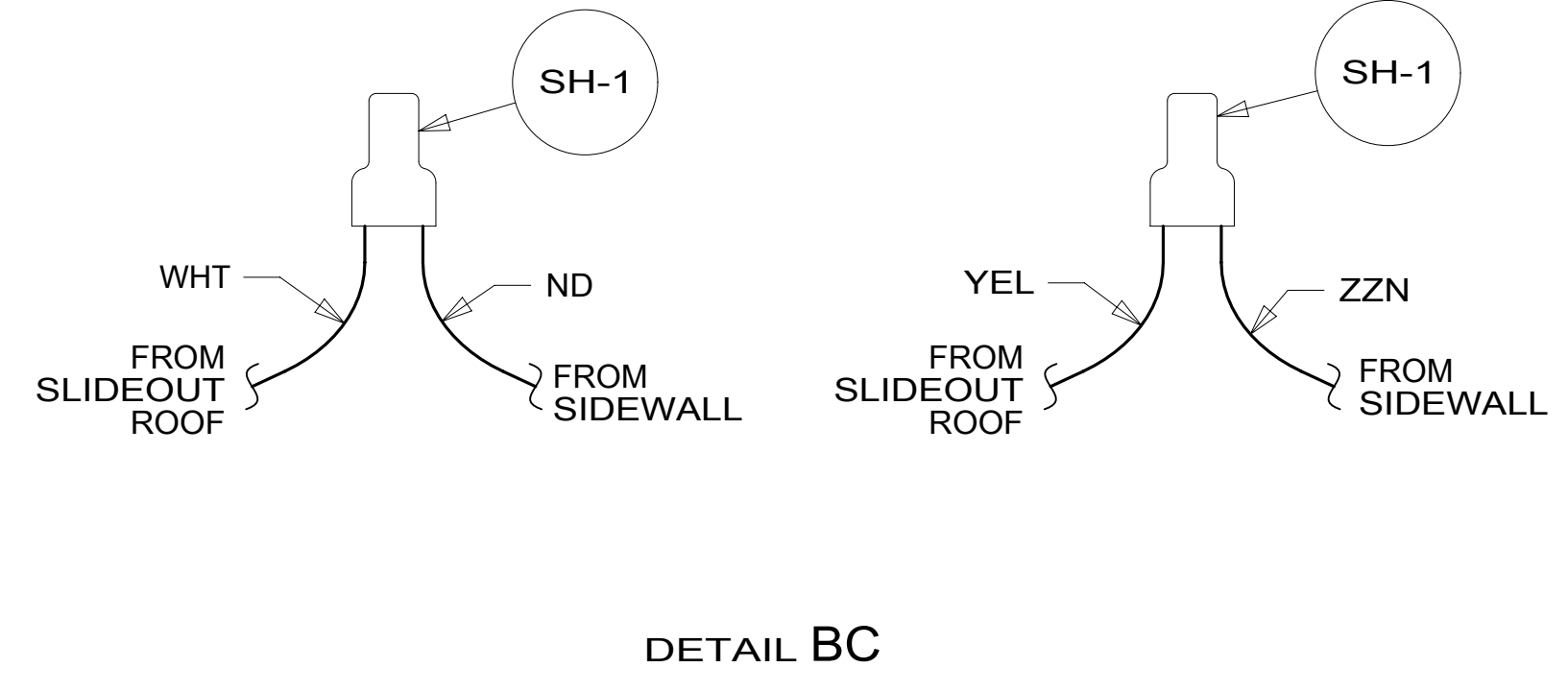
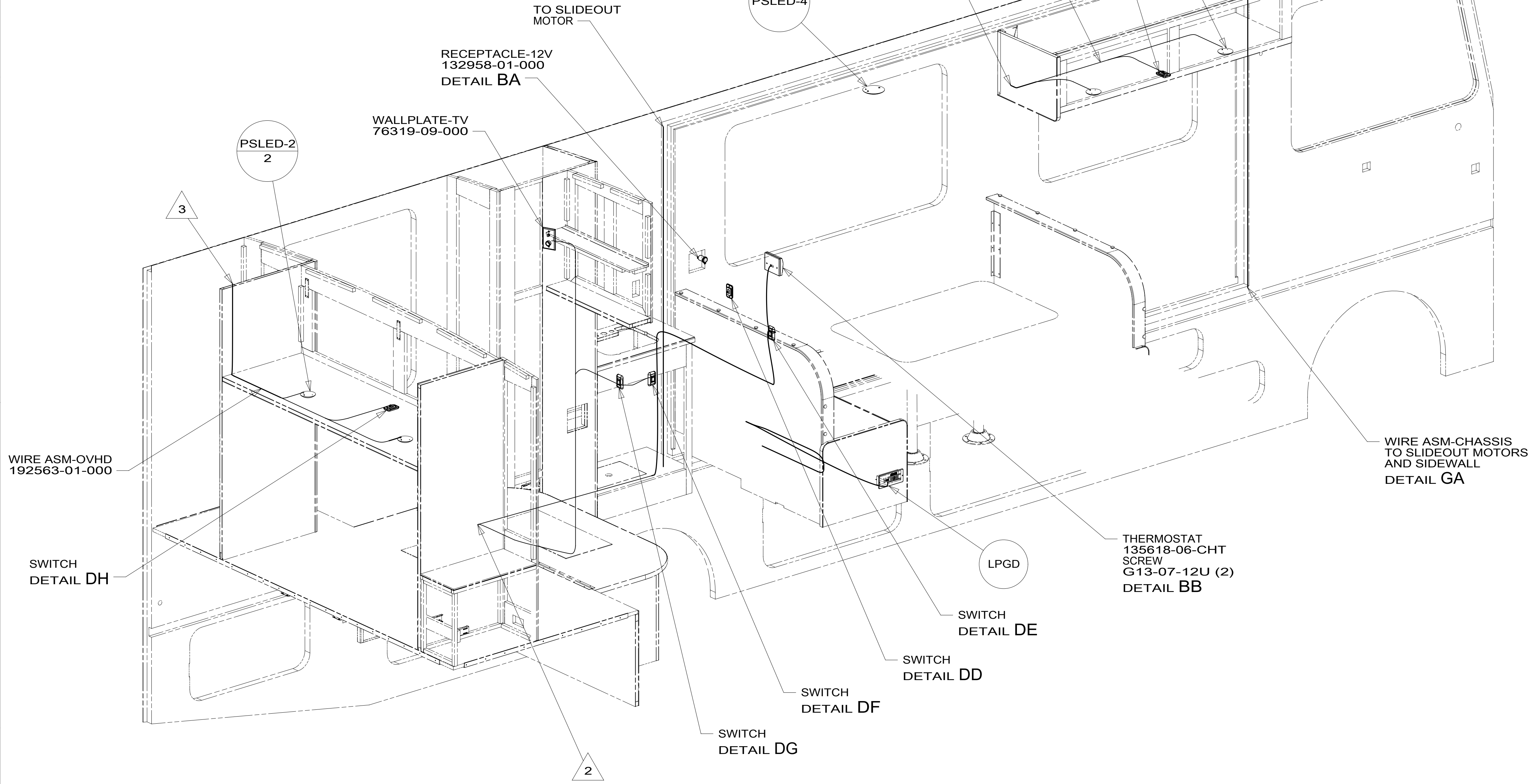
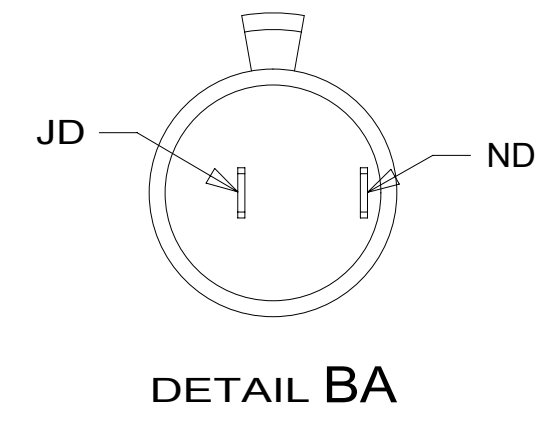
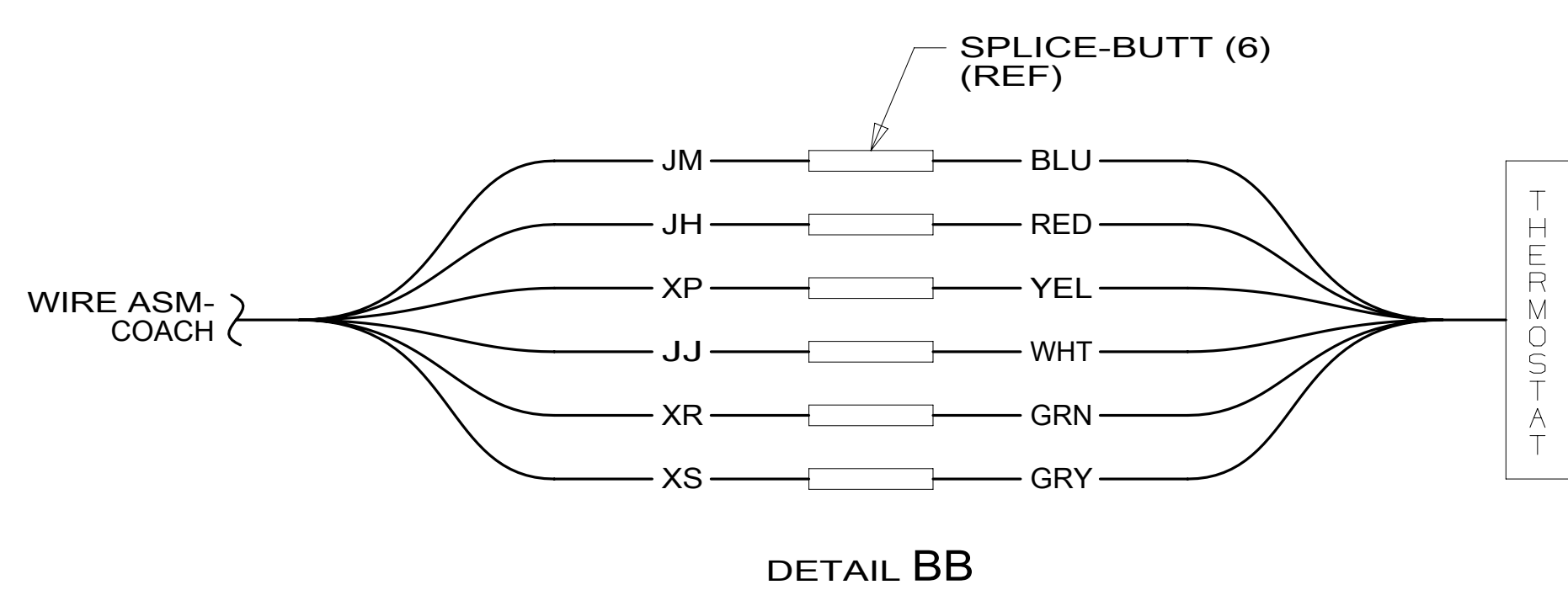
1B1 265



| | | | |
|--|-------------------------|-----------------------------------|-------------|
| DSNR: | | ALL DIMENSIONS ARE IN MILLIMETERS | |
| DFFR: | | | |
| UNSPECIFIED TOLERANCES: | | MATERIAL: | |
| WHOLE DIM (X) | 3 | | |
| ONE-PLACE (X.X) | 1.5 | | |
| TWO-PLACE (X.XX) | 0.50 | | |
| ANGLE | 1° | | |
| REFER TO ES0018 FOR FASTENER TIGHTENING GUIDELINES | | WEIGHT: (LBS) | FIRST USED: |
| DESCRIPTION: WIRING INSTL-BODY, 12V | | | |
| SHEET: | ITEM/PART NO.: | REV | |
| 1 OF 7 | 000179668 / 30048701000 | | |

8 7 6 5 4 3 2 1

8 7 6 5 4 3 2 1



- 3 WIRE FROM ROOF.
- 2 WIRE PASSES THROUGH FLOOR IN THIS AREA.

1. AT MINIMUM ALL WIRES TO BE SUPPORTED AND SECURED PER CODE REQUIREMENTS. USE CLAMP 10495 OR 10497 OR WIRE TIE 8343 OR 108046 AND SCREW G67-XX-XXX OR G56-XX-XXX AS APPROPRIATE FOR INSTALLATION.

NOTES:

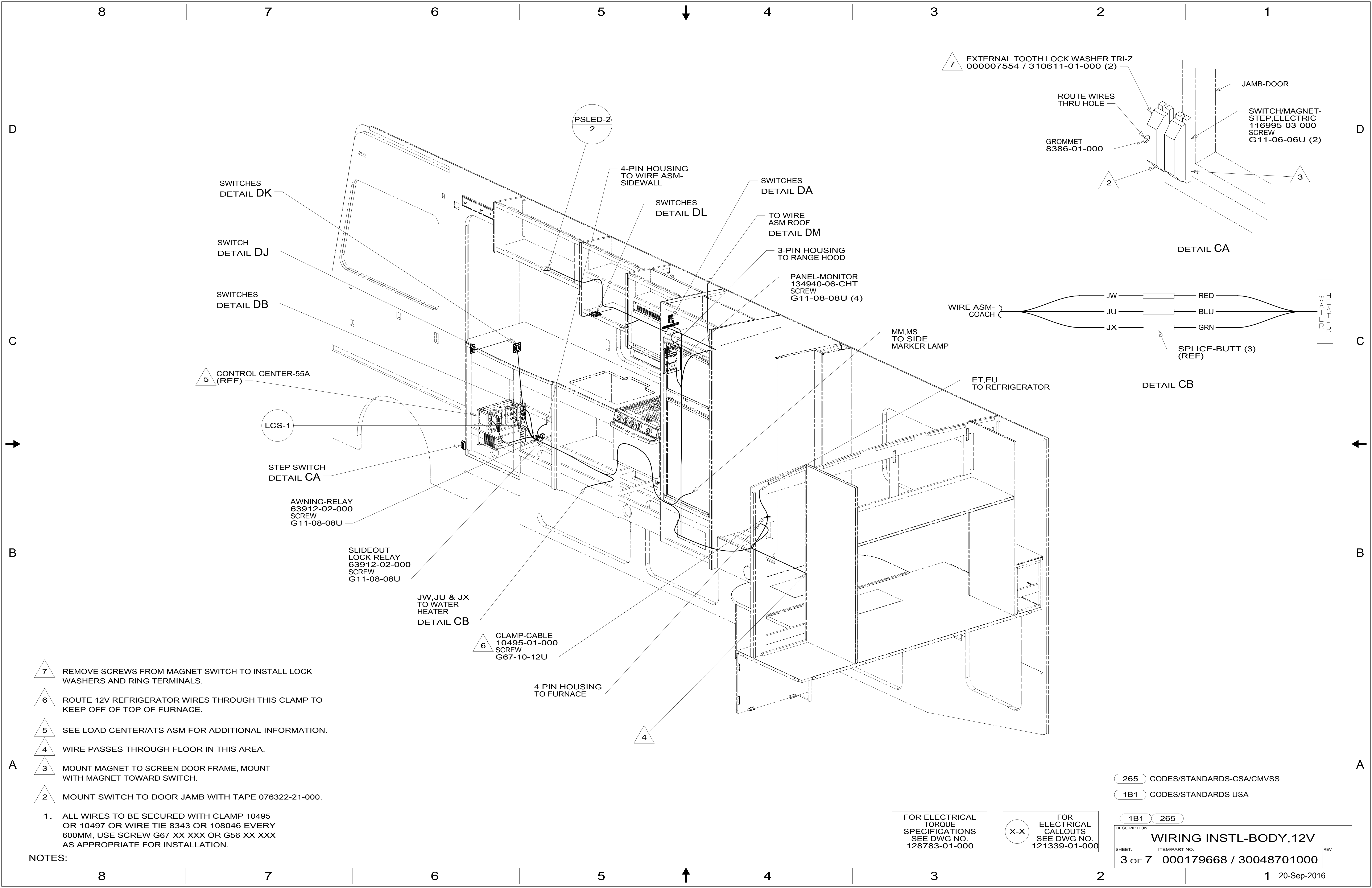
FOR ELECTRICAL TORQUE SPECIFICATIONS SEE DWG NO. 128783-01-000

FOR ELECTRICAL CALLOUTS SEE DWG NO. 121339-01-000

265 CODES/STANDARDS-CSA/CMVSS

1B1 CODES/STANDARDS USA

| | | |
|-------------------------------|-------------------------|---------|
| DESCRIPTION: | | 1B1 265 |
| WIRING INSTL-BODY, 12V | | |
| SHEET: | ITEM/PART NO.: | REV: |
| 2 OF 7 | 000179668 / 30048701000 | |



SWITCHES
DETAIL DK

SWITCH
DETAIL DJ

SWITCHES
DETAIL DB

5 CONTROL CENTER-55A
(REF)

LCS-1

STEP SWITCH
DETAIL CA

AWNING-RELAY
63912-02-000
SCREW
G11-08-08U

SLIDEOUT
LOCK-RELAY
63912-02-000
SCREW
G11-08-08U

JW, JU & JX
TO WATER
HEATER
DETAIL CB

6 CLAMP-CABLE
10495-01-000
SCREW
G67-10-12U

4 PIN HOUSING
TO FURNACE

PSLED-2
2

4-PIN HOUSING
TO WIRE ASM-
SIDEWALL

SWITCHES
DETAIL DL

SWITCHES
DETAIL DA

TO WIRE
ASM ROOF
DETAIL DM

3-PIN HOUSING
TO RANGE HOOD

PANEL-MONITOR
134940-06-CHT
SCREW
G11-08-08U (4)

MM,MS
TO SIDE
MARKER LAMP

ET,EU
TO REFRIGERATOR

7 EXTERNAL TOOTH LOCK WASHER TRI-Z
000007554 / 310611-01-000 (2)

ROUTE WIRES
THRU HOLE

GROMMET
8386-01-000

JAMB-DOOR

SWITCH/MAGNET-
STEP ELECTRIC
116995-03-000
SCREW
G11-06-06U (2)

DETAIL CA

WIRE ASM-
COACH

JW

RED

JU

BLU

JX

GRN

SPLICE-BUTT (3)
(REF)

DETAIL CB

- 7 REMOVE SCREWS FROM MAGNET SWITCH TO INSTALL LOCK WASHERS AND RING TERMINALS.
- 6 ROUTE 12V REFRIGERATOR WIRES THROUGH THIS CLAMP TO KEEP OFF OF TOP OF FURNACE.
- 5 SEE LOAD CENTER/ATS ASM FOR ADDITIONAL INFORMATION.
- 4 WIRE PASSES THROUGH FLOOR IN THIS AREA.
- 3 MOUNT MAGNET TO SCREEN DOOR FRAME, MOUNT WITH MAGNET TOWARD SWITCH.
- 2 MOUNT SWITCH TO DOOR JAMB WITH TAPE 076322-21-000.

1. ALL WIRES TO BE SECURED WITH CLAMP 10495 OR 10497 OR WIRE TIE 8343 OR 108046 EVERY 600MM, USE SCREW G67-XX-XXX OR G56-XX-XXX AS APPROPRIATE FOR INSTALLATION.

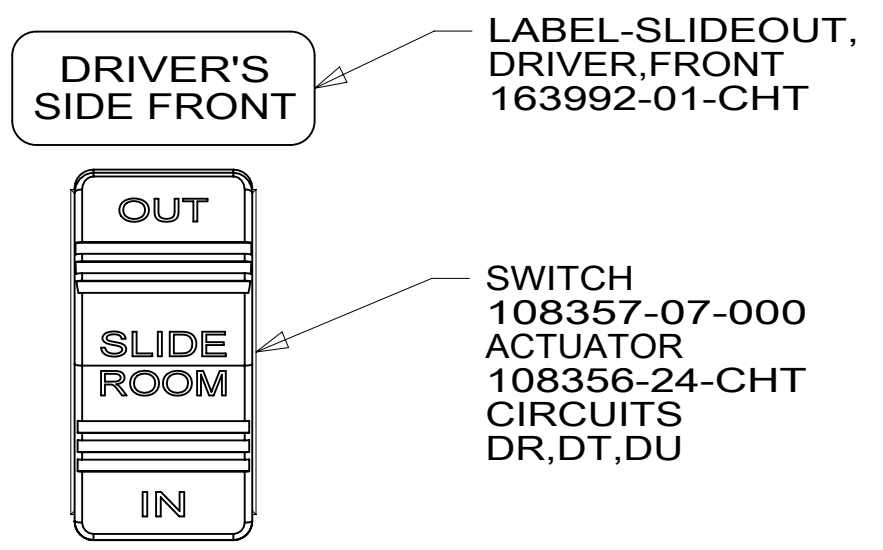
NOTES:

FOR ELECTRICAL
TORQUE
SPECIFICATIONS
SEE DWG NO.
128783-01-000

FOR
ELECTRICAL
CALLOUTS
SEE DWG NO.
121339-01-000

265 CODES/STANDARDS-CSA/CMVSS
1B1 CODES/STANDARDS USA

| | |
|------------------------|-------------------------|
| DESCRIPTION: | |
| 1B1 265 | |
| WIRING INSTL-BODY, 12V | |
| SHEET: | ITEM/PART NO: |
| 3 OF 7 | 000179668 / 30048701000 |
| REV | |



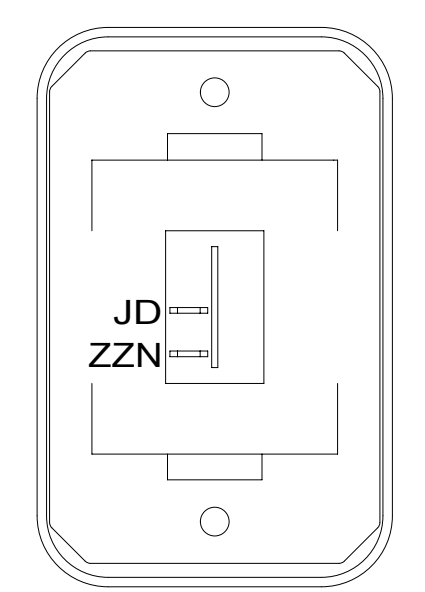
LABEL-SLIDEOUT, DRIVER,FRONT 163992-01-CHT

SWITCH 108357-07-000 ACTUATOR 108356-24-CHT CIRCUITS DR,DT,DU

WARNING CRUSH HAZARD. Keep people and objects clear of the inside and the outside of the slideout room when operating. Failure to comply could result in death or serious injury.

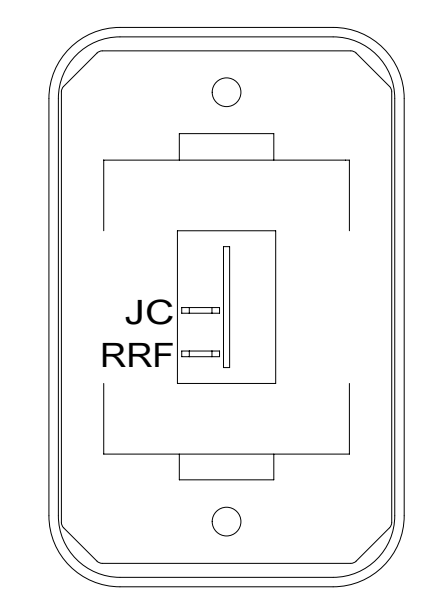
LABEL-WARNING, SLIDEOUT 116549-01-000

DETAIL DA



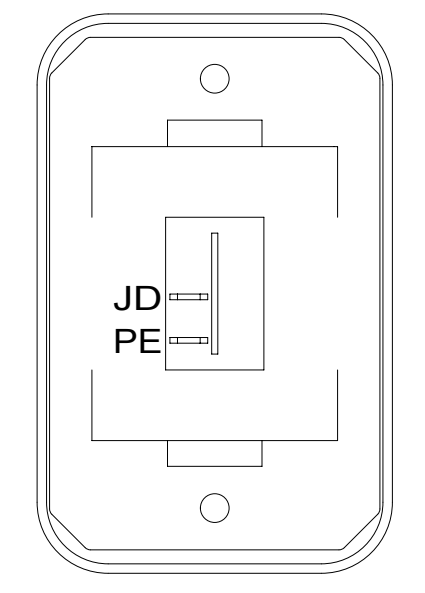
SWITCH-ROCKER 135740-01-CHT SWITCH-BASE 135741-01-CHT SWITCH-BEZEL 135742-01-CHT SCREW G11-08-08U (2)

DETAIL DD



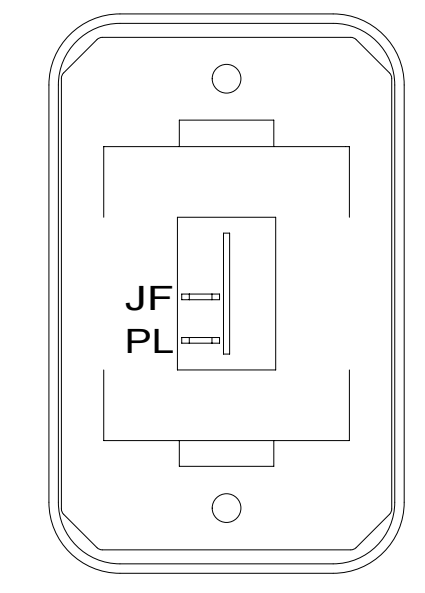
SWITCH-ROCKER 135740-01-CHT SWITCH-BASE 135741-01-CHT SWITCH-BEZEL 135742-01-CHT SCREW G11-08-08U (2)

DETAIL DH



SWITCH-ROCKER 135740-01-CHT SWITCH-BASE 135741-01-CHT SWITCH-BEZEL 135742-01-CHT SCREW G11-08-08U (2)

DETAIL DE



SWITCH-ROCKER 135740-01-CHT SWITCH-BASE 135741-01-CHT SWITCH-BEZEL 135742-01-CHT SCREW G11-08-08U (2)

DETAIL DJ

SWITCH-AWNING 108357-06-000 ACTUATOR-SWITCH 108356-12-CHT CIRCUITS FFD,FFR,FFE FFE,JJR,FFD

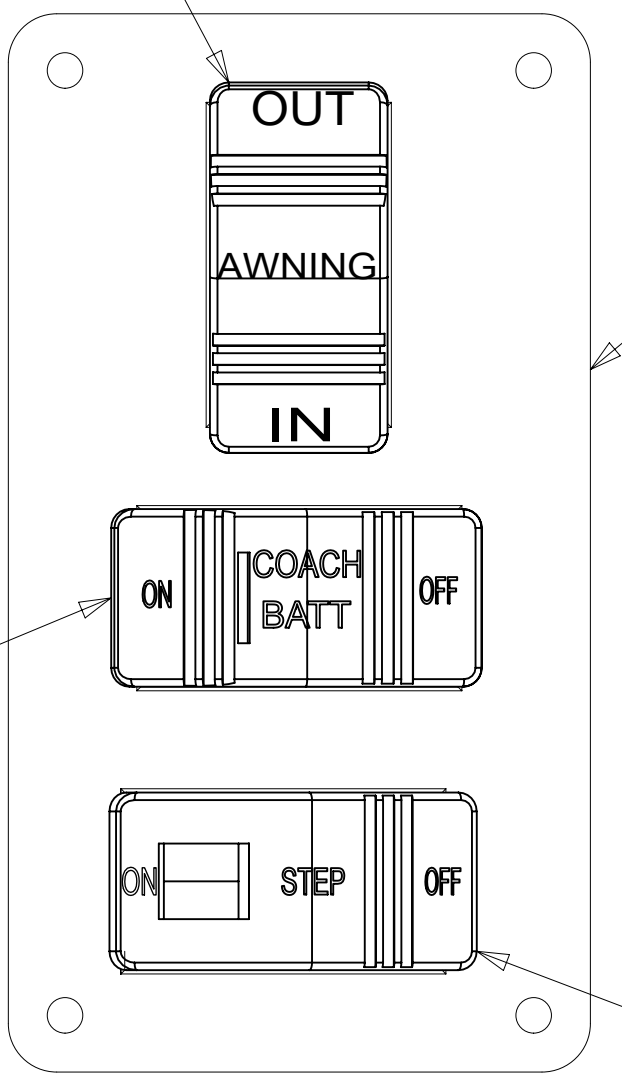
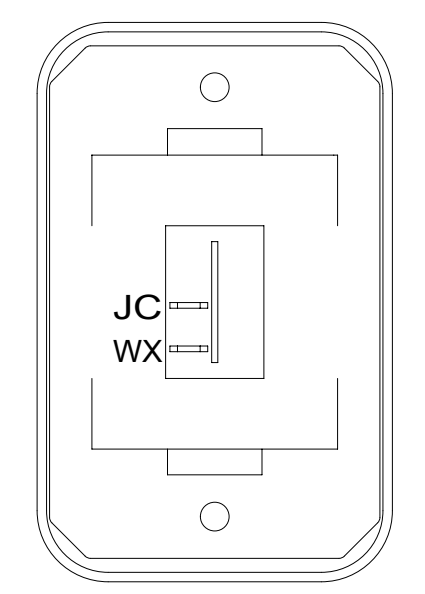


PLATE-SWITCH 158431-31-CHT SCREW G11-06-10U (4)

SWITCH-COACH BATTERY 108357-18-000 ACTUATOR-SWITCH 108356-19-CHT CIRCUITS KF,I,G,L,J,LH,WC WIRE ASM-THERM 186796-01-000

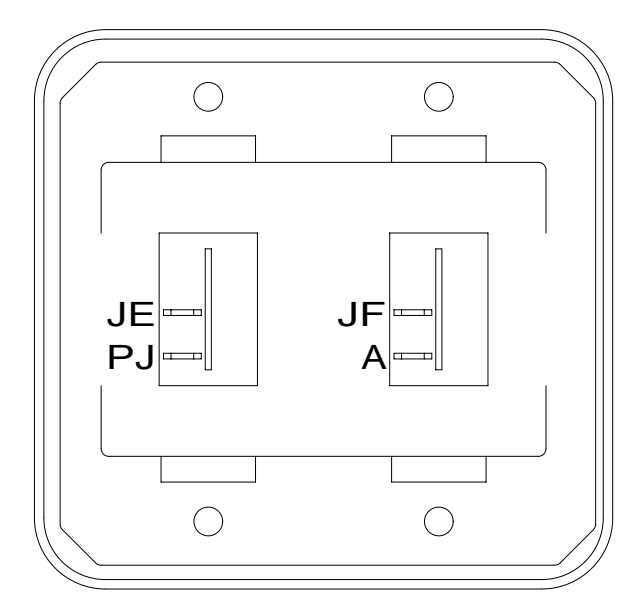
SWITCH-STEP 108357-19-000 CIRCUITS ER,ES

DETAIL DB 1



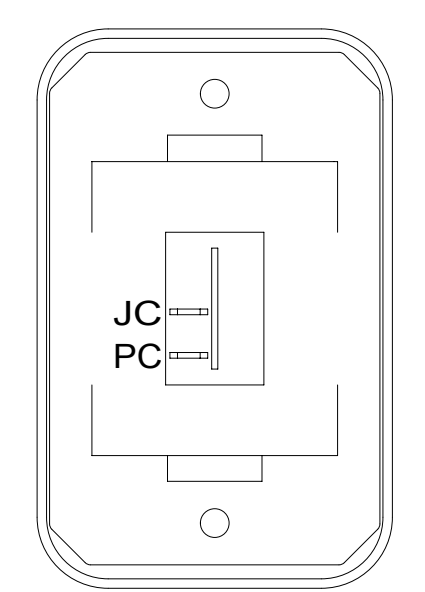
SWITCH-ROCKER 135740-01-CHT SWITCH-BASE 135741-01-CHT SWITCH-BEZEL 135742-01-CHT SCREW G11-08-08U (2)

DETAIL DF



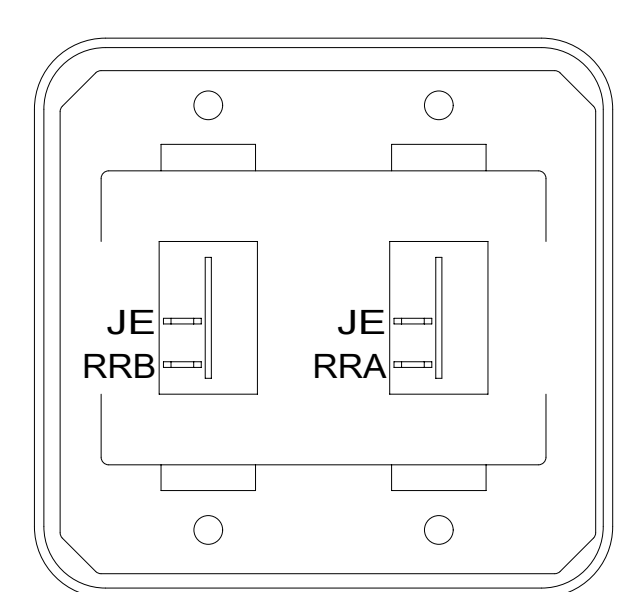
SWITCH-ROCKER 135740-01-CHT (2) SWITCH-BASE 135741-02-CHT SWITCH-BEZEL 135742-02-CHT SCREW G11-08-08U (4)

DETAIL DK



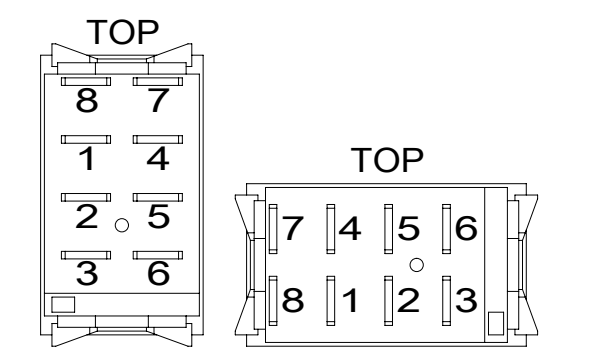
SWITCH-ROCKER 135740-01-CHT SWITCH-BASE 135741-01-CHT SWITCH-BEZEL 135742-01-CHT SCREW G11-08-08U (2)

DETAIL DG

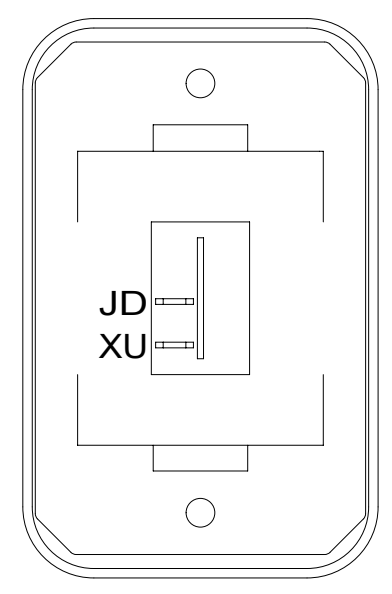


SWITCH-ROCKER 135740-01-CHT (2) SWITCH-BASE 135741-02-CHT SWITCH-BEZEL 135742-02-CHT SCREW G11-08-08U (4)

DETAIL DL

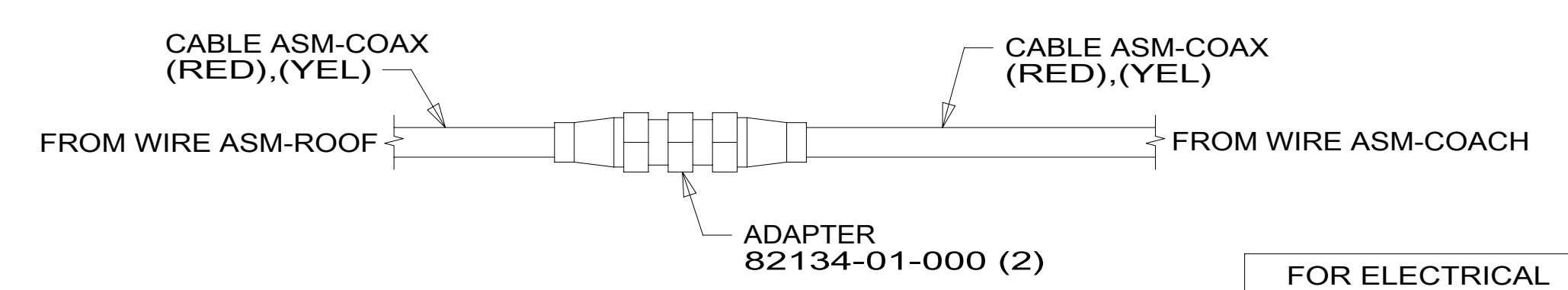


DETAIL DN



SWITCH-ROCKER 135740-01-CHT SWITCH-BASE 135741-01-CHT SWITCH-BEZEL 135742-01-CHT SCREW G11-08-08U (2)

DETAIL DC



DETAIL DM

FOR ELECTRICAL TORQUE SPECIFICATIONS SEE DWG NO. 128783-01-000

FOR ELECTRICAL CALLOUTS SEE DWG NO. 121339-01-000

265 CODES/STANDARDS-CSA/CMVSS

1B1 CODES/STANDARDS USA

| | | |
|-------------------------------|-------------------------|-----|
| DESCRIPTION: | 1B1 265 | |
| WIRING INSTL-BODY, 12V | | |
| SHEET: | ITEM/PART NO: | REV |
| 4 OF 7 | 000179668 / 30048701000 | |

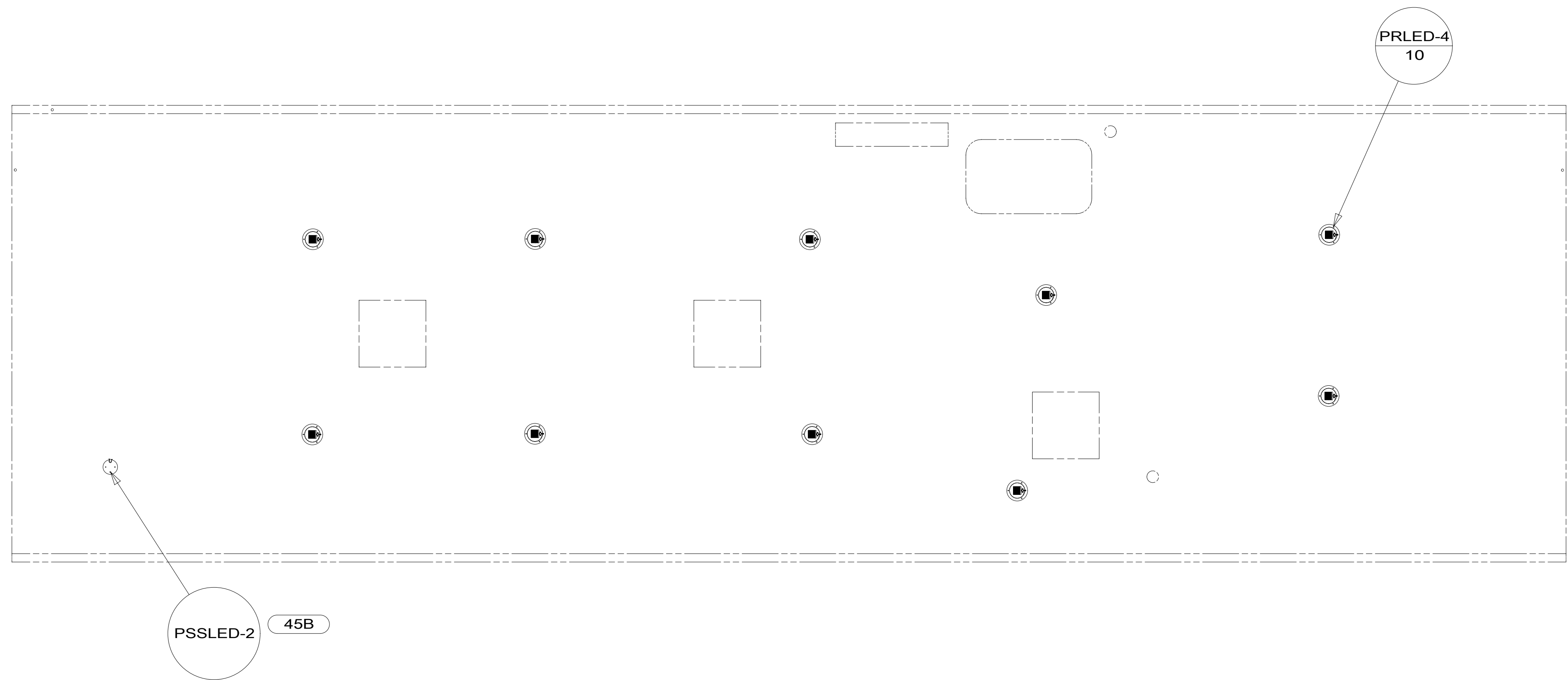
NOTES: 1 FOR SWITCH ORIENTATION SEE DETAIL DN.

8 7 6 5 4 3 2 1



D
C
B
A

D
C
B
A



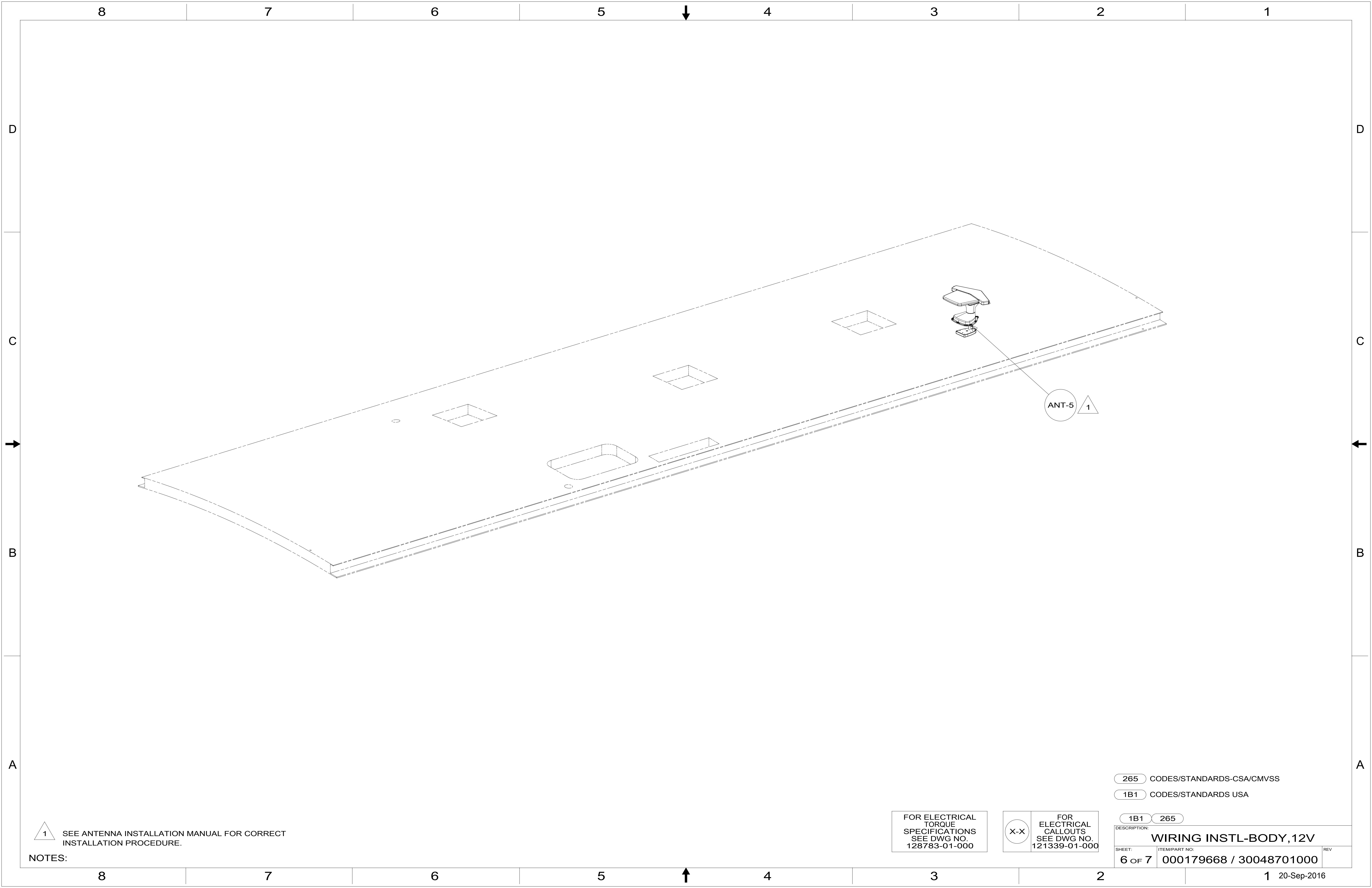
8 7 6 5 4 3 2 1 20-Sep-2016

- 45B LOFT BED
- 265 CODES/STANDARDS-CSA/CMVSS
- 1B1 CODES/STANDARDS USA

FOR ELECTRICAL
TORQUE
SPECIFICATIONS
SEE DWG NO.
128783-01-000

FOR
ELECTRICAL
CALLOUTS
SEE DWG NO.
121339-01-000

| | |
|-------------------------------|-------------------------|
| DESCRIPTION: | |
| 1B1 265 | |
| WIRING INSTL-BODY, 12V | |
| SHEET: | ITEM/PART NO: |
| 5 OF 7 | 000179668 / 30048701000 |
| REV | |



1 SEE ANTENNA INSTALLATION MANUAL FOR CORRECT INSTALLATION PROCEDURE.

NOTES:

FOR ELECTRICAL TORQUE SPECIFICATIONS SEE DWG NO. 128783-01-000

FOR ELECTRICAL CALLOUTS SEE DWG NO. 121339-01-000

265 CODES/STANDARDS-CSA/CMVSS

1B1 CODES/STANDARDS USA

1B1 265

DESCRIPTION: WIRING INSTL-BODY, 12V

| | | |
|---------------|---------------------------------------|-----|
| SHEET: 6 OF 7 | ITEM/PART NO: 000179668 / 30048701000 | REV |
|---------------|---------------------------------------|-----|

8 7 6 5 4 3 2 1



D

D

WIRES PASS THRU
SLOT IN MAIN FLOOR
IN THIS AREA

WIRES PASS THRU
SLOT IN MAIN FLOOR
IN THIS AREA

GROMMET
016188-11-000 (2)

CLAMP
10495-02-000 (11)
SCREW
G11-10-16U (11)

TO SLIDEOUT MOTOR

TO SLIDEOUT MOTOR

FLOOR ASM-UPPER
(REF)

C

C

301

300

300

300

300

300

300

300

300

300

300

300

699

3815

3927



B

B

VIEW GA

A

A

265 CODES/STANDARDS-CSA/CMVSS

1B1 CODES/STANDARDS USA

1B1 265

FOR ELECTRICAL
TORQUE
SPECIFICATIONS
SEE DWG NO.
128783-01-000

FOR ELECTRICAL
CALLOUTS
SEE DWG NO.
121339-01-000

DESCRIPTION:
WIRING INSTL-BODY, 12V

SHEET: 7 OF 7 ITEM/PART NO: 000179668 / 30048701000 REV

8 7 6 5 4 3 2 1 20-Sep-2016

