

GFI-1/US (BLU)
GALLEY
GFI-1/CA (BLU)
GALLEY

THROW IN WIRE #2

RCP-B (DET CA)
GALLEY

RCP-2 (BRN-2)
SDWL,RH,FRONT SP-06 4

110V CONNECTIONS
TO SLIDEROOM
DETAIL DA 2

RCP-1 (BLK)
MICROWAVE 4

RCP-2 (BLU)
GALLEY FRT SP-06 4

CLAMP
10497-10-000

RCP-3 (YEL-2)
REFRIGERATOR 4

RCP-2 (DET CD)
BDRM TV 4

6 WITHOUT 1D3
WIRE GOES DIRECTLY TO BDRM TV RCP.

5 WIRES ROUTED IN ROOF.

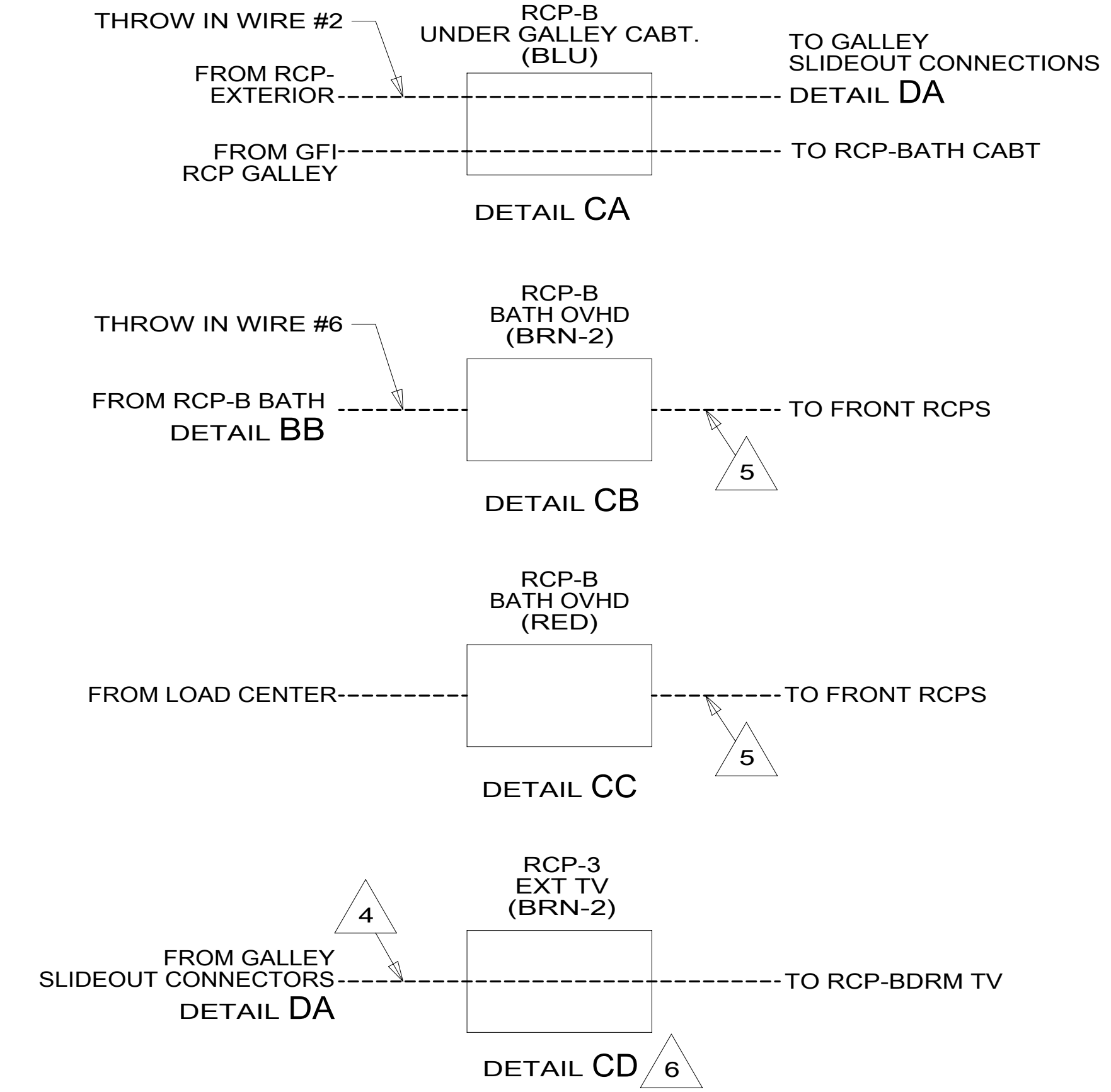
4 WIRES ROUTED IN SIDEWALL.

3 WIRES ROUTE THRU FLOOR IN THIS AREA.

2 SEE LOAD CENTER/ATS ASM FOR ADDITIONAL
INFORMATION.

1. ALL WIRES TO BE SECURED WITH CLAMP 10495
OR 10497 OR WIRE TIE 8343 OR 108046 EVERY
600MM, USE SCREW G67-XX-XXX OR G56-XX-XXX
AS APPROPRIATE FOR INSTALLATION.

NOTES:

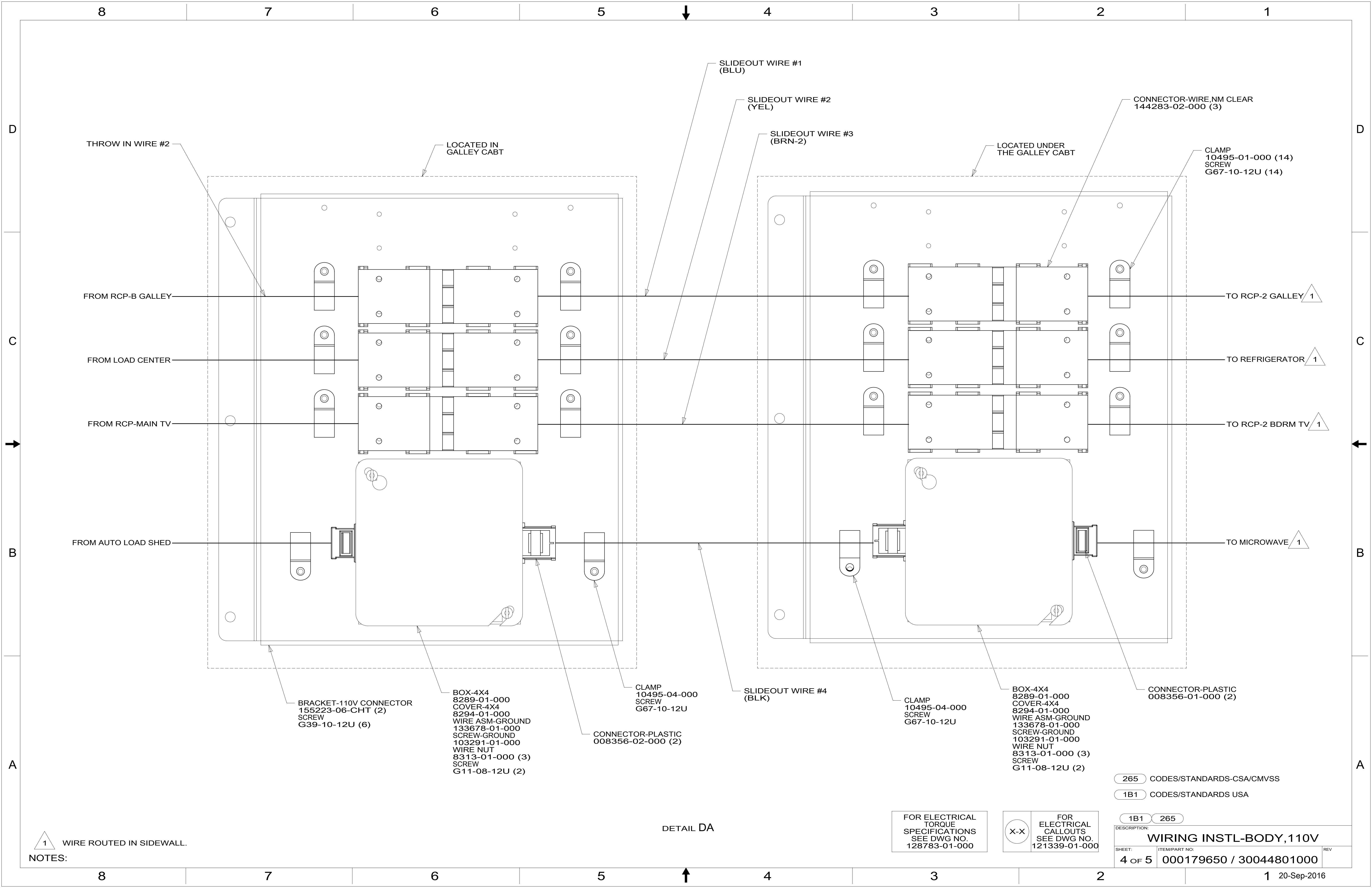


FOR ELECTRICAL
TORQUE
SPECIFICATIONS
SEE DWG NO.
128783-01-000

FOR
ELECTRICAL
CALLOUTS
SEE DWG NO.
121339-01-000

- 1D3 ENTERTAIN CENTR/EXT TV-DVD
- 265 CODES/STANDARDS-CSA/CMVSS
- 1B1 CODES/STANDARDS USA

DESCRIPTION:		1B1 265	
WIRING INSTL-BODY, 110V			
SHEET:	ITEM/PART NO.:	REV:	
3 OF 5	000179650 / 30044801000		



THROW IN WIRE #2

LOCATED IN GALLEY CABT

SLIDEOUT WIRE #1 (BLU)

SLIDEOUT WIRE #2 (YEL)

SLIDEOUT WIRE #3 (BRN-2)

LOCATED UNDER THE GALLEY CABT

CONNECTOR-WIRE,NM CLEAR 144283-02-000 (3)

CLAMP 10495-01-000 (14)
SCREW G67-10-12U (14)

FROM RCP-B GALLEY

TO RCP-2 GALLEY 1

FROM LOAD CENTER

TO REFRIGERATOR 1

FROM RCP-MAIN TV

TO RCP-2 BDRM TV 1

FROM AUTO LOAD SHED

TO MICROWAVE 1

BRACKET-110V CONNECTOR 155223-06-CHT (2)
SCREW G39-10-12U (6)

BOX-4X4 8289-01-000
COVER-4X4 8294-01-000
WIRE ASM-GROUND 133678-01-000
SCREW-GROUND 103291-01-000
WIRE NUT 8313-01-000 (3)
SCREW G11-08-12U (2)

CLAMP 10495-04-000
SCREW G67-10-12U

CONNECTOR-PLASTIC 008356-02-000 (2)

SLIDEOUT WIRE #4 (BLK)

CLAMP 10495-04-000
SCREW G67-10-12U

BOX-4X4 8289-01-000
COVER-4X4 8294-01-000
WIRE ASM-GROUND 133678-01-000
SCREW-GROUND 103291-01-000
WIRE NUT 8313-01-000 (3)
SCREW G11-08-12U (2)

CONNECTOR-PLASTIC 008356-01-000 (2)

265 CODES/STANDARDS-CSA/CMVSS

1B1 CODES/STANDARDS USA

1B1 265

FOR ELECTRICAL TORQUE SPECIFICATIONS SEE DWG NO. 128783-01-000

FOR ELECTRICAL CALLOUTS SEE DWG NO. 121339-01-000

DESCRIPTION: WIRING INSTL-BODY, 110V

SHEET: 4 OF 5 ITEM/PART NO.: 000179650 / 30044801000 REV

1 WIRE ROUTED IN SIDEWALL.

DETAIL DA

