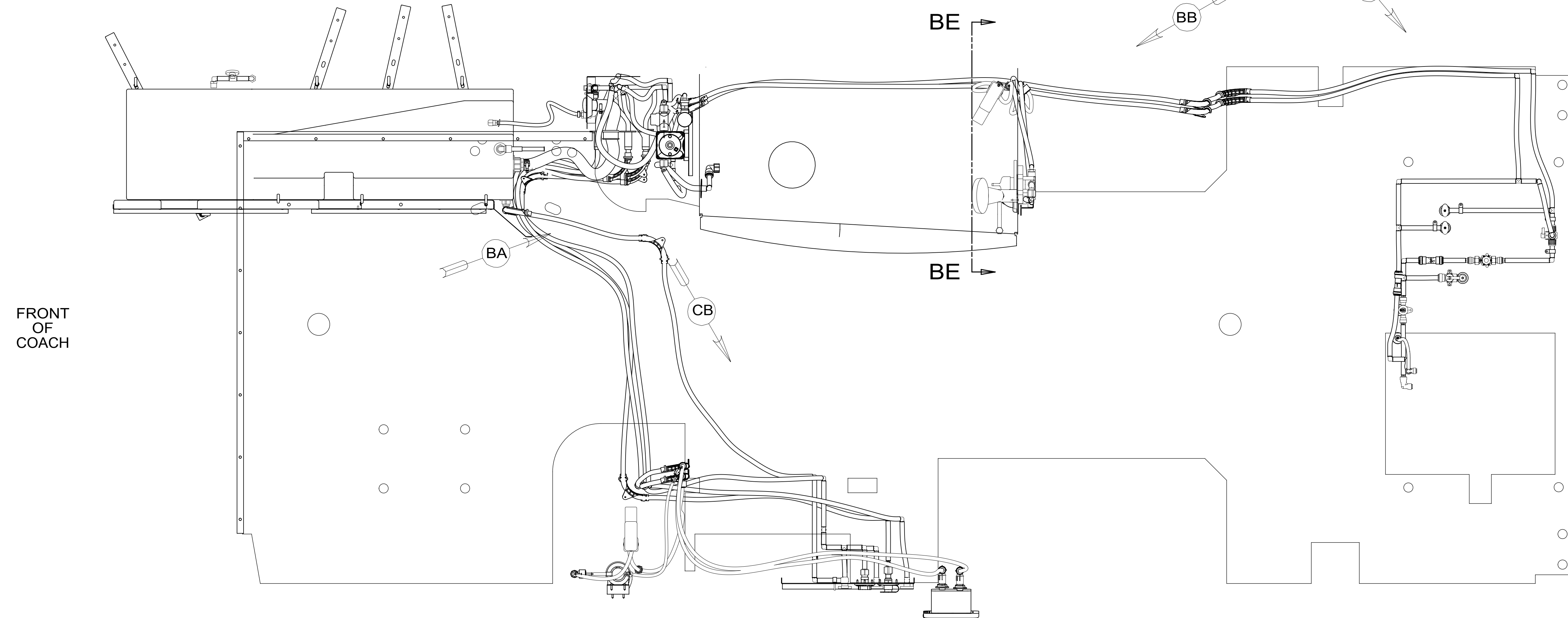


REV	ZONE	REVISION RECORD	DATE	DFTR-ORIG
A	---	INITIAL RELEASE	11/02/15	3650-2646
B	---	REPLACED F-14 WITH F-15	11/18/15	2796-5643
C	SH2-3	RE-POSITION WATER HEATER BY-PASS VALVE	12/17/15	3660
D	---	CHG LENGTHS SHT2	1-27-16	1600-5841
E	---	CHG BRKT SHT3	2-11-16	1600-0428
F	---	CHG LENGTH VIEW CA; CC; CD	2-29-16	1600-0428
G	SHT2	VIEW BA,CHGD GRAVITY FILL PANEL	03/02/16	2183
H	---	CHGD LENGTHS SHT2,4		
J	---	CHG LENGTH;ADD LENGTH, ELBOW SHT2	7-14-16	1600-5841
K	---	CHG CONN. AROUND PUMP SHT2,4	7-29-16	1600-5841
L	S3	071015-39-000 WAS 071015-13-000	10/14/16	9080-5841



- 10. SECURE VALVE HANDLE W/SILICON.
  - 9. PARTS TO BE ASSEMBLED AND ABLE TO BE REMOVED AND STORED AS A SINGLE ASM.
  - 8. ALL CRIMP FITTINGS TO 1/2" PEX TUBING REQUIRE 1/2" CLAMP 140171-03-000.
  - 7. ALL CRIMP FITTINGS TO 5/8" PEX TUBING REQUIRE 5/8" CLAMP 140171-04-000.
  - 6. LABEL HOT AND COLD SUPPLY TUBES AND TAPE FITTING TO TUBE BEFORE CABINET SET TO PREVENT MOVEMENT.
  - 5. ADD PIPE WRAP (LADDER SCRAP 110157-02-000) INSULATION.
  - 4. ADD TEFLON TAPE 010405-02-000.
  - 3. ALL TUBING TO BE SECURED AT 1200 INTERVALS MAXIMUM WITH CLAMP 010495-01-000 AND SCREW 000G67-10-12U OR EQUIVALENT.
  - 2. TUBING TO BE INSTALLED WITH SUFFICIENT SLOPE TO PROVIDE DRAINAGE TO NEAREST VALVE.
  - 1. PLASTIC FITTINGS TO BE SEALED WITH SEALANT 084456-01-000.
- NOTES:

X-X

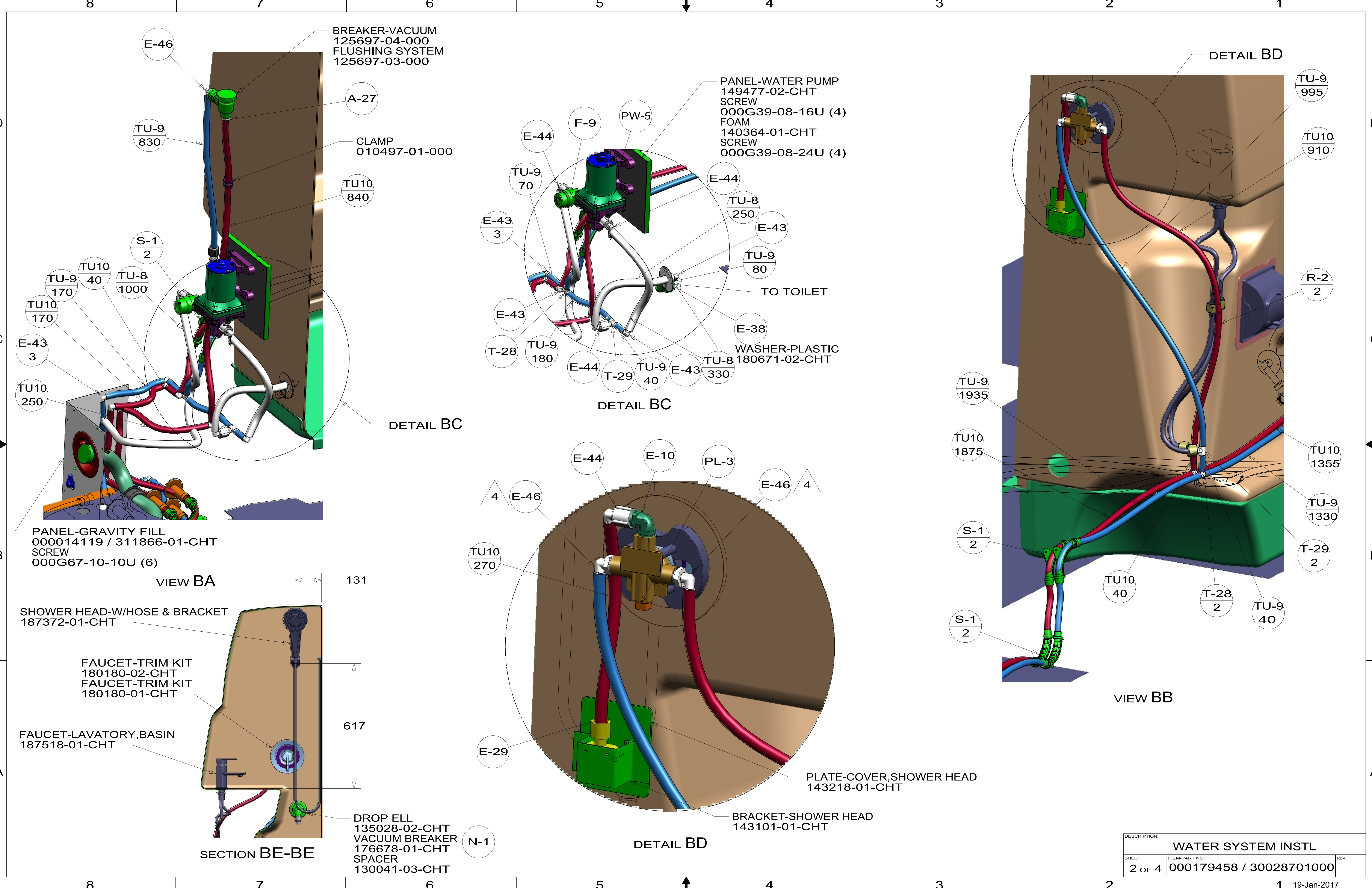
FOR WATER CALLOUTS SEE DWG NO. 000209446 / 303369-01-000

**29B WATER PURIFIER**

**WINNEBAGO**  
COPYRIGHT 2016 WINNEBAGO INDUSTRIES, INC.

DSNR:	ALL DIMENSIONS ARE IN MILLIMETERS	
DFTR:	MATERIAL:	
UNSPECIFIED TOLERANCES:	WHOLE DIM (X) :	3
	ONE-PLACE (X.X) :	1.5
	TWO-PLACE (X.XX) :	0.50
	ANGLE :	1°
REFER TO ES0018 FOR FASTENER TIGHTENING GUIDELINES	WEIGHT: (LBS)	FIRST USED: (REF)
		16 170X
DESCRIPTION: WATER SYSTEM INSTL		
SHEET: 1 OF 4	ITEM/PART NO: 000179458 / 30028701000	REV:

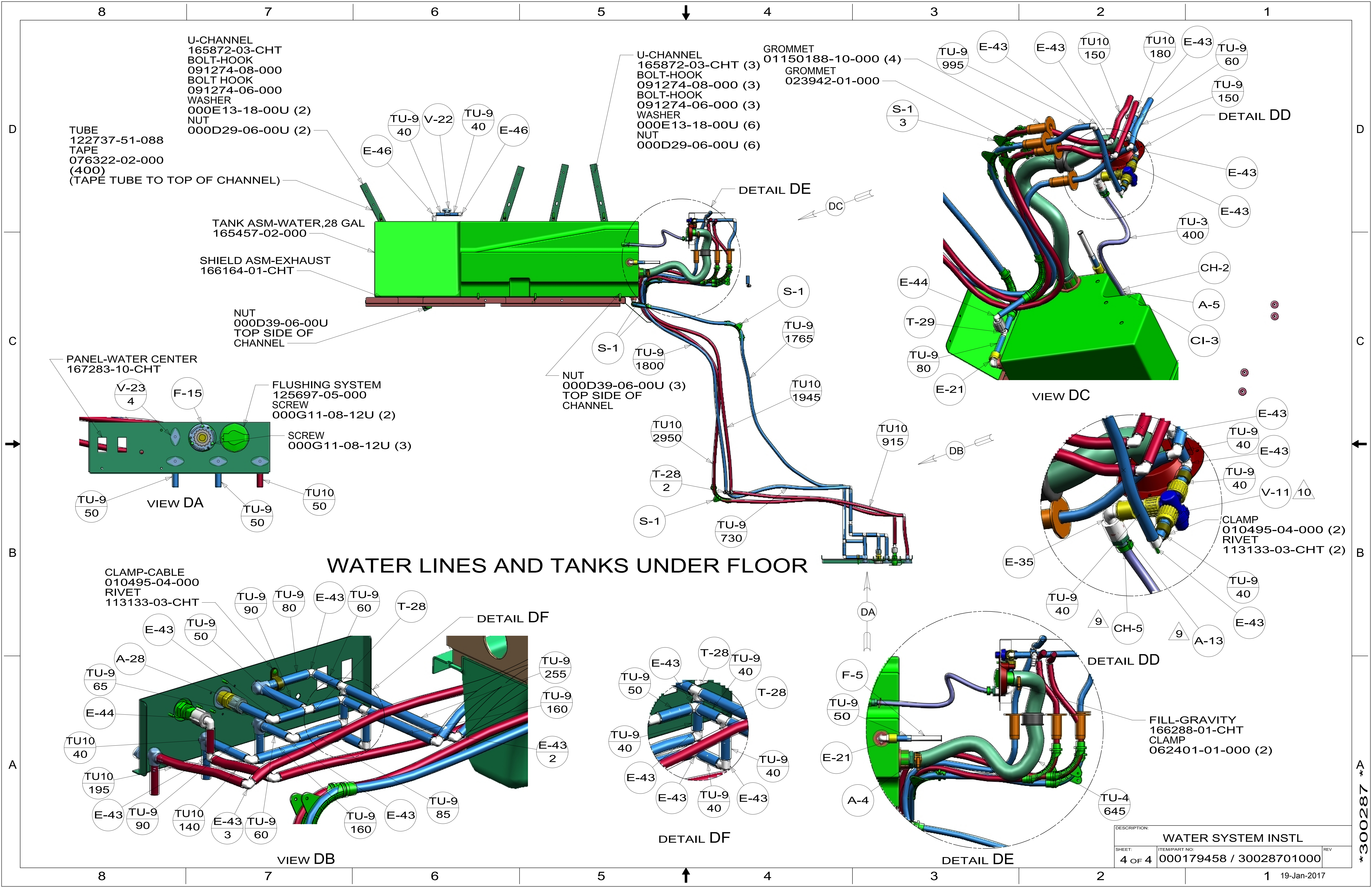
\*300287\*



DESCRIPTION:		
WATER SYSTEM INSTL		
SHEET:	ITEM/PART NO.:	REV
2 OF 4	000179458 / 30028701000	

\*300287\*





U-CHANNEL  
165872-03-CHT  
BOLT-HOOK  
091274-08-000  
BOLT HOOK  
091274-06-000  
WASHER  
000E13-18-00U (2)  
NUT  
000D29-06-00U (2)

TUBE  
122737-51-088  
TAPE  
076322-02-000  
(400)  
(TAPE TUBE TO TOP OF CHANNEL)

TANK ASM-WATER, 28 GAL  
165457-02-000

SHIELD ASM-EXHAUST  
166164-01-CHT

NUT  
000D39-06-00U  
TOP SIDE OF  
CHANNEL

PANEL-WATER CENTER  
167283-10-CHT

FLUSHING SYSTEM  
125697-05-000  
SCREW  
000G11-08-12U (2)

SCREW  
000G11-08-12U (3)

NUT  
000D39-06-00U (3)  
TOP SIDE OF  
CHANNEL

GROMMET  
01150188-10-000 (4)  
GROMMET  
023942-01-000

U-CHANNEL  
165872-03-CHT (3)  
BOLT-HOOK  
091274-08-000 (3)  
BOLT-HOOK  
091274-06-000 (3)  
WASHER  
000E13-18-00U (6)  
NUT  
000D29-06-00U (6)

**WATER LINES AND TANKS UNDER FLOOR**

CLAMP-CABLE  
010495-04-000  
RIVET  
113133-03-CHT

DETAIL DF

DETAIL DD

FILL-GRAVITY  
166288-01-CHT  
CLAMP  
062401-01-000 (2)

DESCRIPTION: <b>WATER SYSTEM INSTL</b>		
SHEET: 4 OF 4	ITEM/PART NO: 000179458 / 30028701000	REV

\*300287