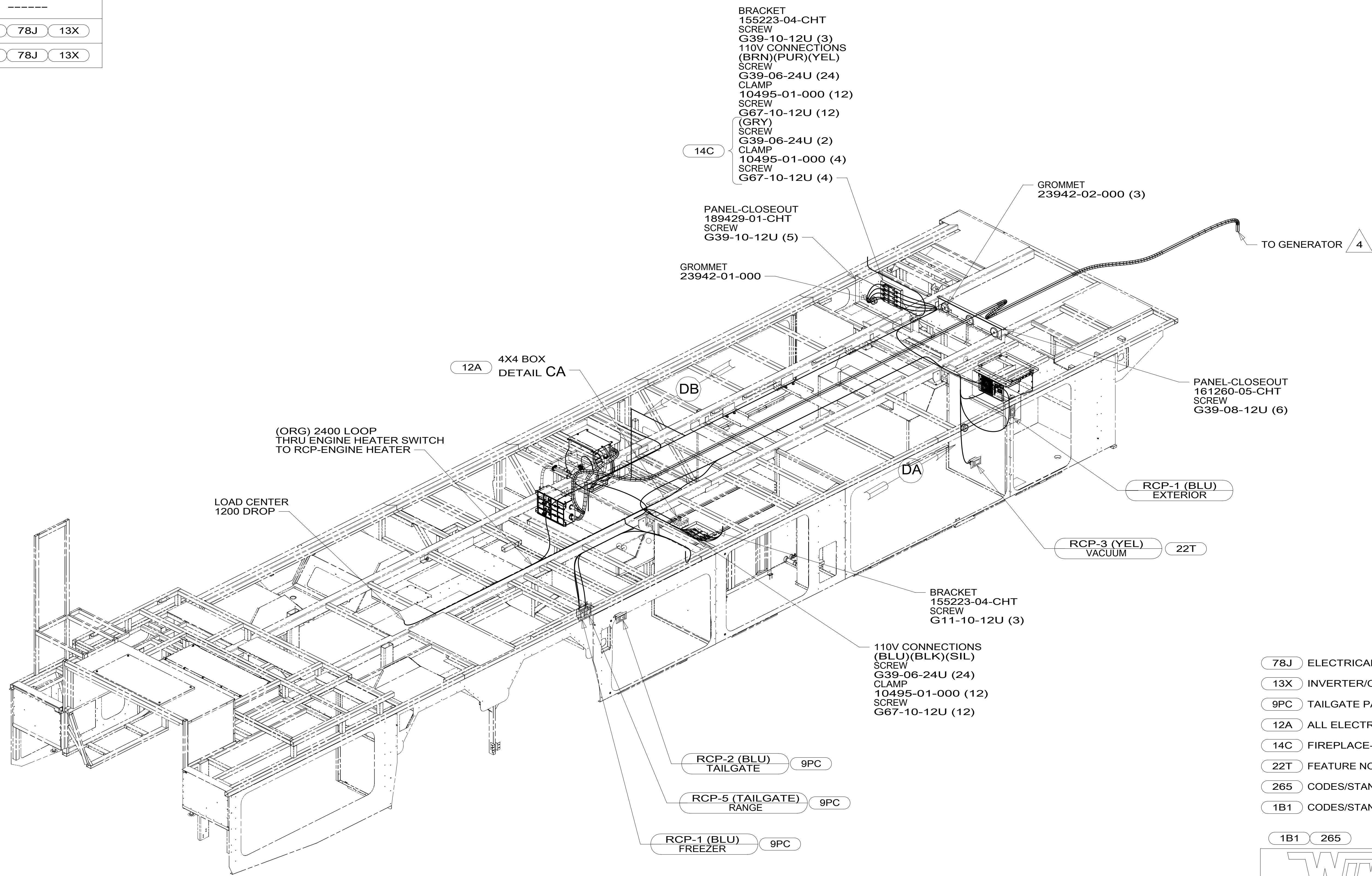


DRAWING NO.	FEATURE
300153-01	-----
300153-14	1B1 78J 13X
300153-18	265 78J 13X



- BRACKET 155223-04-CHT
- SCREW G39-10-12U (3)
- 110V CONNECTIONS (BRN)(PUR)(YEL) SCREW G39-06-24U (24)
- CLAMP 10495-01-000 (12)
- SCREW G67-10-12U (12) (GRY)
- SCREW G39-06-24U (2)
- CLAMP 10495-01-000 (4)
- SCREW G67-10-12U (4)

14C

12A 4X4 BOX  
DETAIL CA

DB

(ORG) 2400 LOOP  
THRU ENGINE HEATER SWITCH  
TO RCP-ENGINE HEATER

LOAD CENTER  
1200 DROP

BRACKET 155223-04-CHT  
SCREW G11-10-12U (3)

110V CONNECTIONS (BLU)(BLK)(SIL)  
SCREW G39-06-24U (24)  
CLAMP 10495-01-000 (12)  
SCREW G67-10-12U (12)

RCP-2 (BLU) TAILGATE 9PC

RCP-5 (TAILGATE) RANGE 9PC

RCP-1 (BLU) FREEZER 9PC

GROMMET 23942-02-000 (3)

PANEL-CLOSEOUT 189429-01-CHT  
SCREW G39-10-12U (5)

GROMMET 23942-01-000

PANEL-CLOSEOUT 161260-05-CHT  
SCREW G39-08-12U (6)

RCP-1 (BLU) EXTERIOR

RCP-3 (YEL) VACUUM 22T

TO GENERATOR 4

- 78J ELECTRICAL SYSTEM-50 AMP
- 13X INVERTER/CHARGER 2.0 KW
- 9PC TAILGATE PACKAGE
- 12A ALL ELECTRIC COACH
- 14C FIREPLACE-ELECTRIC
- 22T FEATURE NOTE
- 265 CODES/STANDARDS-CSA/CMVSS
- 1B1 CODES/STANDARDS USA

1B1 265



DSNR:	ALL DIMENSIONS ARE IN MILLIMETERS	
DFFR:		
UNSPECIFIED TOLERANCES:	MATERIAL:	
WHOLE DIM (X) : 3		
ONE-PLACE (X.X) : 1.5		
TWO-PLACE (X.XX) : 0.50		
ANGLE : 1°		
REFER TO ES0018 FOR FASTENER TIGHTENING GUIDELINES	WEIGHT: (LBS)	FIRST USED: 16 R42QD
DESCRIPTION: WIRING INSTL-BODY, 110V		
SHEET: 1 OF 5	ITEM/PART NO: 000179419 / 30015301000	REV:

4 SEE GENERATOR INSTL FOR ADDITIONAL INFORMATION.

3. WIRES THAT REST ON WIRE TRAYS ARE TO BE TIED DOWN WITH WIRE TIE 8343-04-000.

2. CLAMP TO FLOOR SUPPORT TUBES AS NECESSARY WITH CLAMP 10497-01-000.

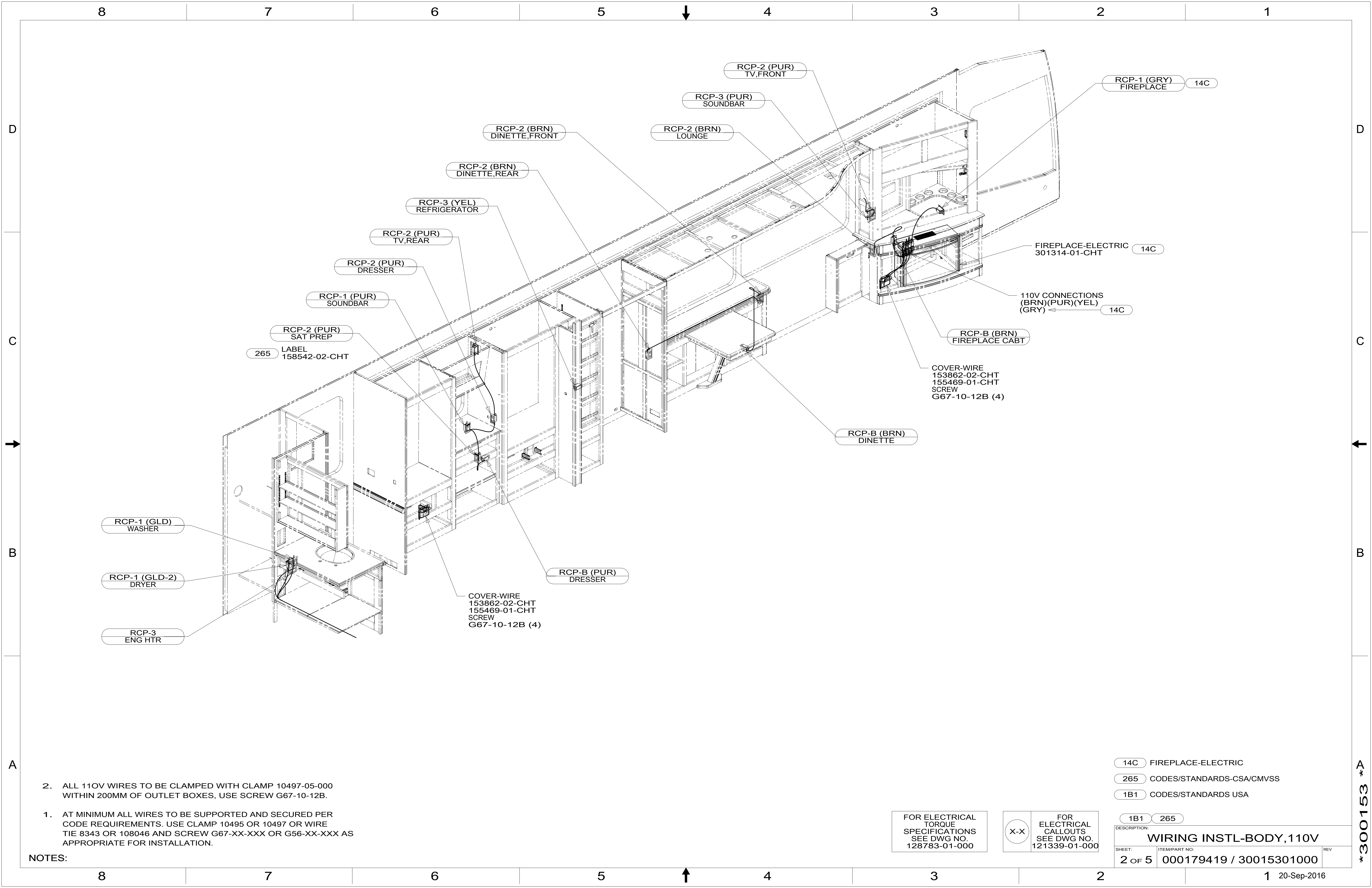
1. AT MINIMUM ALL WIRES TO BE SUPPORTED AND SECURED PER CODE REQUIREMENTS. USE CLAMP 10495 OR 10497 OR WIRE TIE 8343 OR 108046 AND SCREW G67-XX-XXX OR G56-XX-XXX AS APPROPRIATE FOR INSTALLATION.

NOTES:

FOR ELECTRICAL TORQUE SPECIFICATIONS SEE DWG NO. 128783-01-000

FOR ELECTRICAL CALLOUTS SEE DWG NO. 121339-01-000

\*300153\*A



- NOTES:
1. AT MINIMUM ALL WIRES TO BE SUPPORTED AND SECURED PER CODE REQUIREMENTS. USE CLAMP 10495 OR 10497 OR WIRE TIE 8343 OR 108046 AND SCREW G67-XX-XXX OR G56-XX-XXX AS APPROPRIATE FOR INSTALLATION.
  2. ALL 110V WIRES TO BE CLAMPED WITH CLAMP 10497-05-000 WITHIN 200MM OF OUTLET BOXES, USE SCREW G67-10-12B.

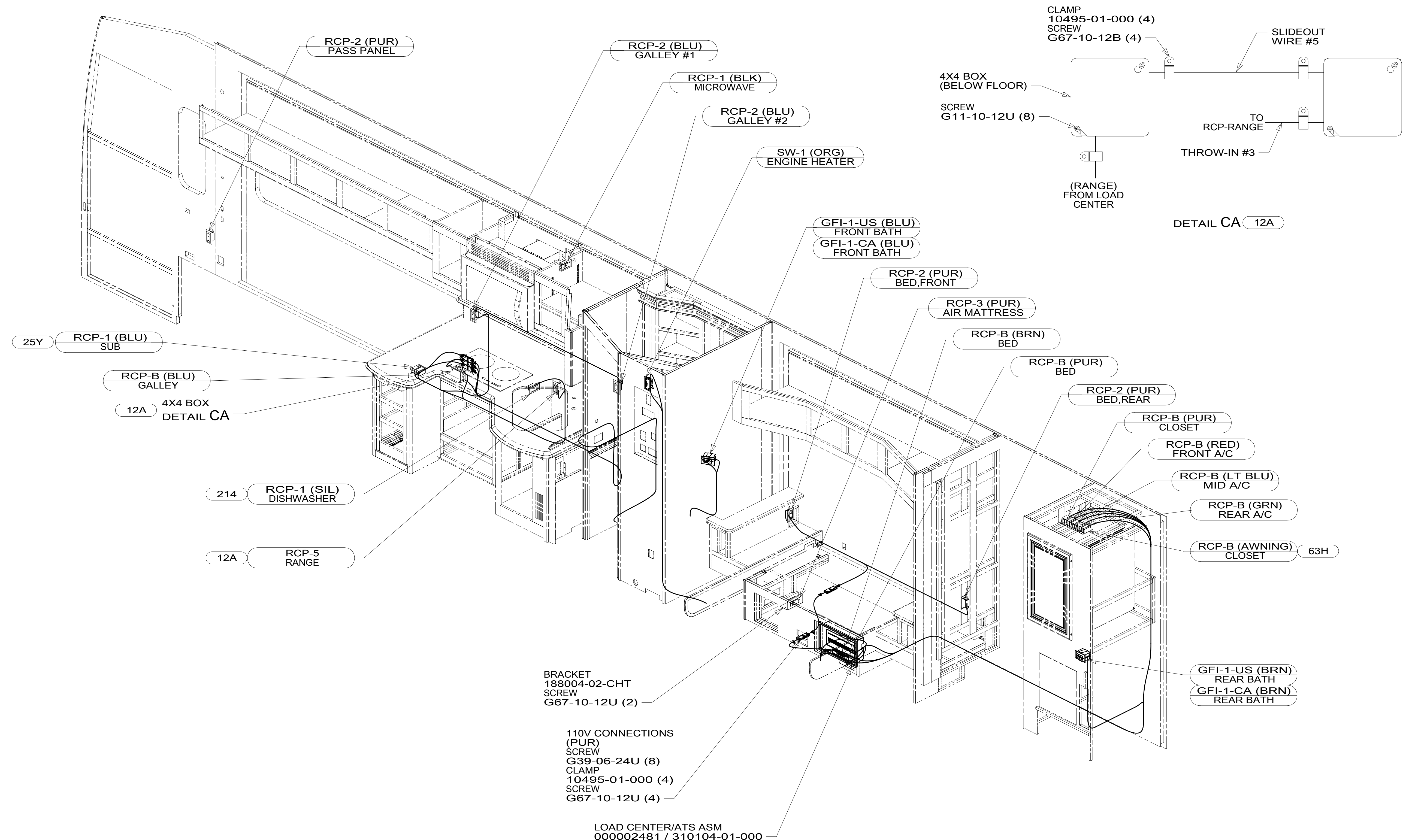
FOR ELECTRICAL TORQUE SPECIFICATIONS SEE DWG NO. 128783-01-000

FOR ELECTRICAL CALLOUTS SEE DWG NO. 121339-01-000

- 14C FIREPLACE-ELECTRIC
- 265 CODES/STANDARDS-CSA/CMVSS
- 1B1 CODES/STANDARDS USA

DESCRIPTION: <b>WIRING INSTL-BODY, 110V</b>		
SHEET: 2 OF 5	ITEM/PART NO: 000179419 / 30015301000	REV

\*300153 \*A



- NOTES:
1. AT MINIMUM ALL WIRES TO BE SUPPORTED AND SECURED PER CODE REQUIREMENTS. USE CLAMP 10495 OR 10497 OR WIRE TIE 8343 OR 108046 AND SCREW G67-XX-XXX OR G56-XX-XXX AS APPROPRIATE FOR INSTALLATION.
  2. ALL 110V WIRES TO BE CLAMPED WITH CLAMP 10497-05-000 WITHIN 200MM OF OUTLET BOXES, USE SCREW G67-10-12B.

FOR ELECTRICAL TORQUE SPECIFICATIONS SEE DWG NO. 128783-01-000

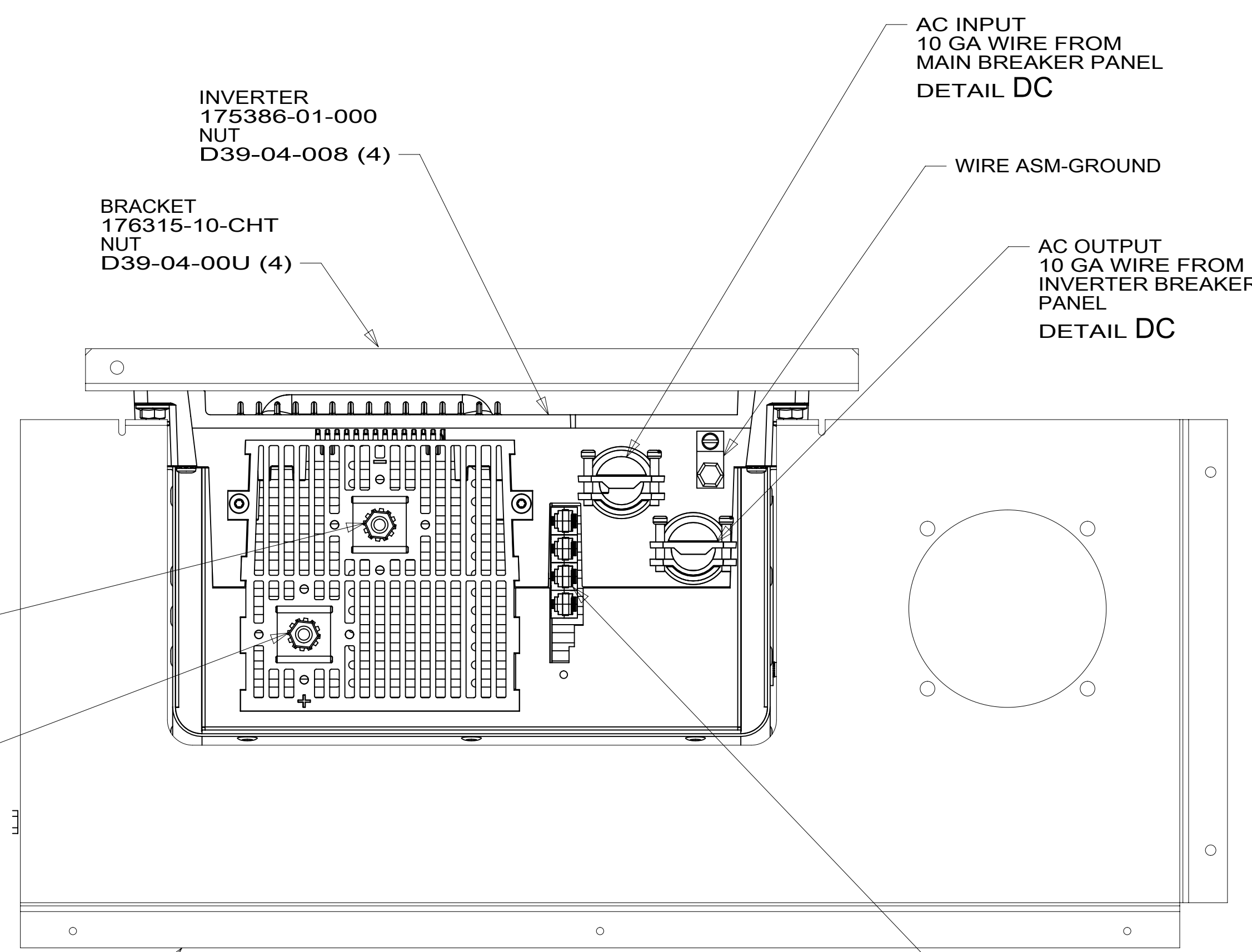
FOR ELECTRICAL CALLOUTS SEE DWG NO. 121339-01-000

- 25Y HOMETHEATER SOUNDBAR SYS-PRM
- 63H AWNING (2) PATIO, ARMLESS
- 12A ALL ELECTRIC COACH
- 214 DISHWASHER DRAWER STYLE
- 265 CODES/STANDARDS-CSA/CMVSS
- 1B1 CODES/STANDARDS USA

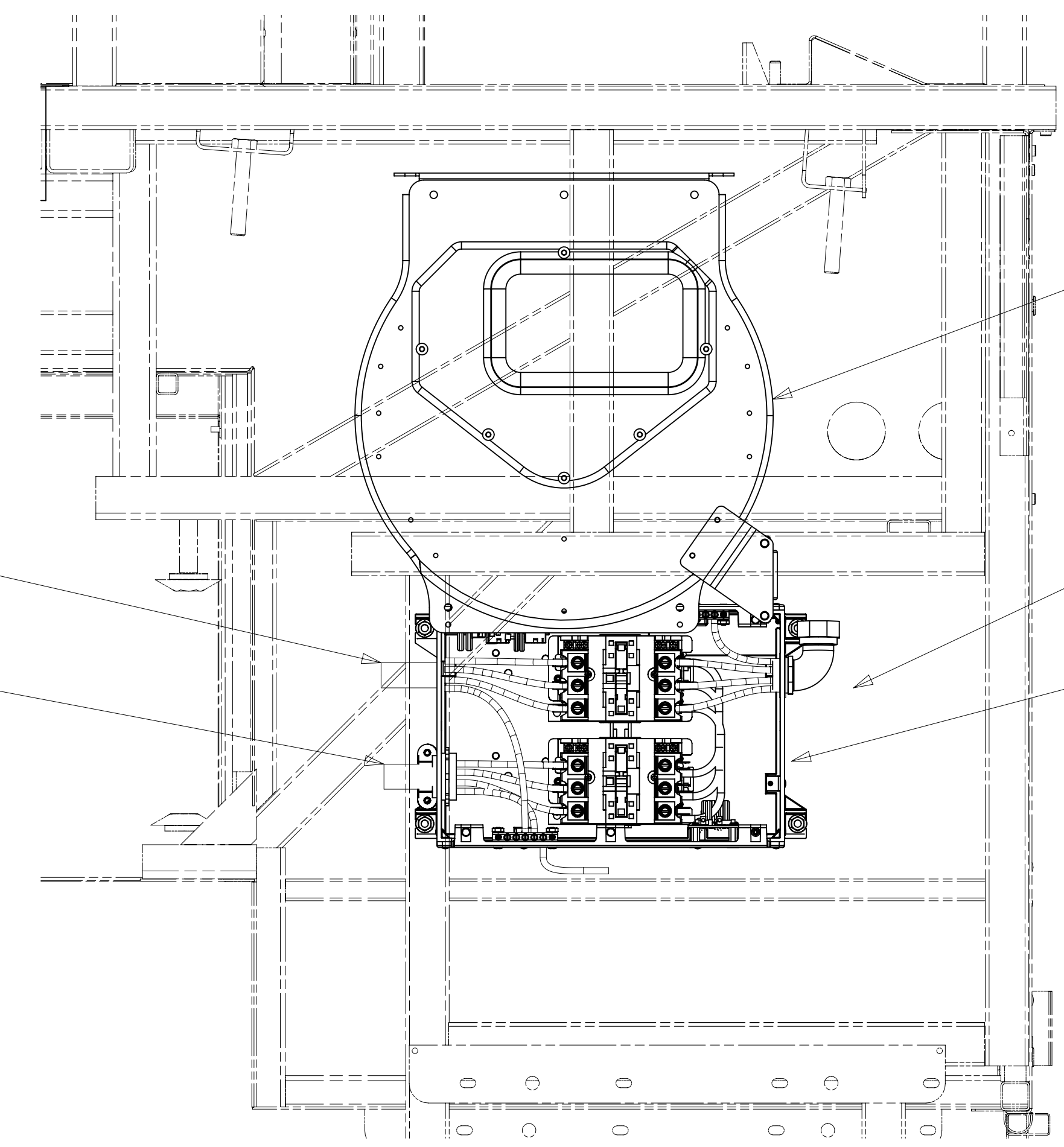
DESCRIPTION:		<b>WIRING INSTL-BODY, 110V</b>	
SHEET:	ITEM/PART NO.:	REV:	
3 OF 5	000179419 / 30015301000		

\*300153\*

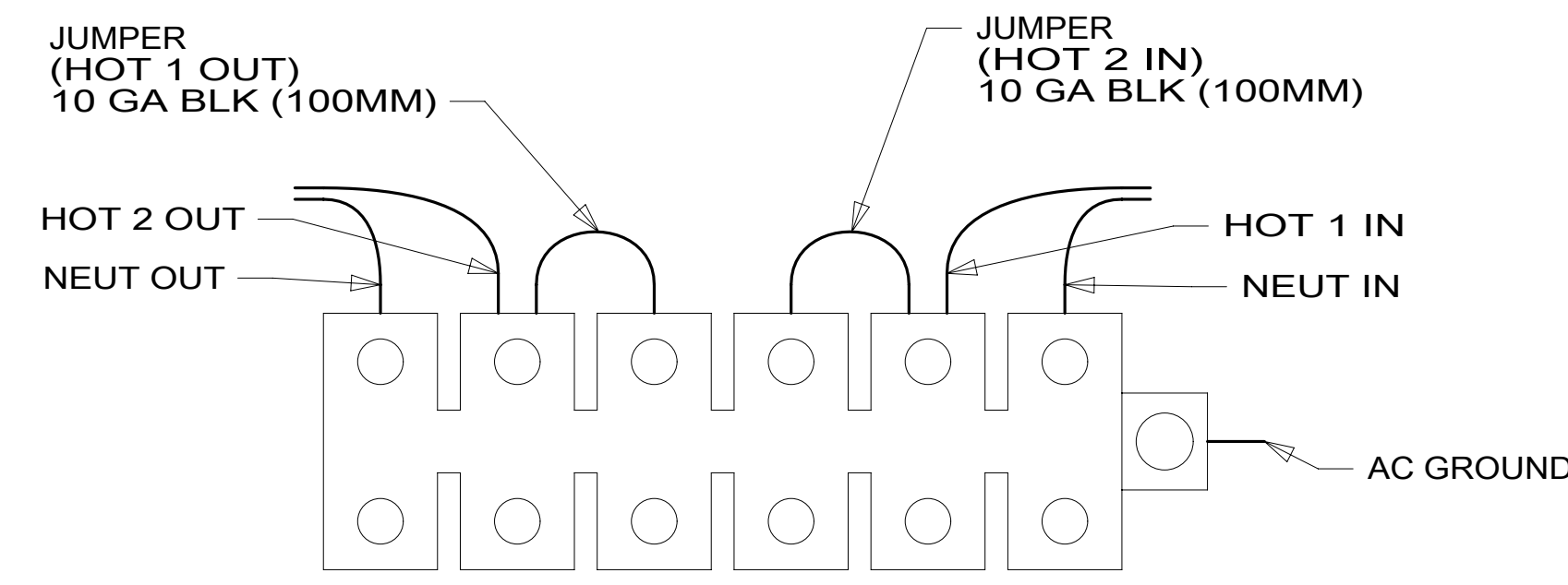
8 7 6 5 4 3 2 1



VIEW DA



VIEW DB



DETAIL DC

- NOTES:
- 4 TORQUE TO 10-12 FT LBS.
  - 3 INSERT BOLT FROM BOTTOM OF COMPARTMENT.
  - 2 SEE BATTERY INSTL FOR ADDITIONAL INFORMATION.
  - 1 SEE LOAD CENTER/ATS ASM FOR ADDITIONAL INFORMATION.

265 CODES/STANDARDS-CSA/CMVSS  
1B1 CODES/STANDARDS USA

FOR ELECTRICAL  
TORQUE  
SPECIFICATIONS  
SEE DWG NO.  
128783-01-000

FOR ELECTRICAL  
CALLOUTS  
SEE DWG NO.  
121339-01-000

DESCRIPTION:	
1B1 265	
WIRING INSTL-BODY, 110V	
SHEET:	ITEM/PART NO:
4 OF 5	000179419 / 30015301000
REV	

8 7 6 5 4 3 2 1 20-Sep-2016

\*300153 \*A



