

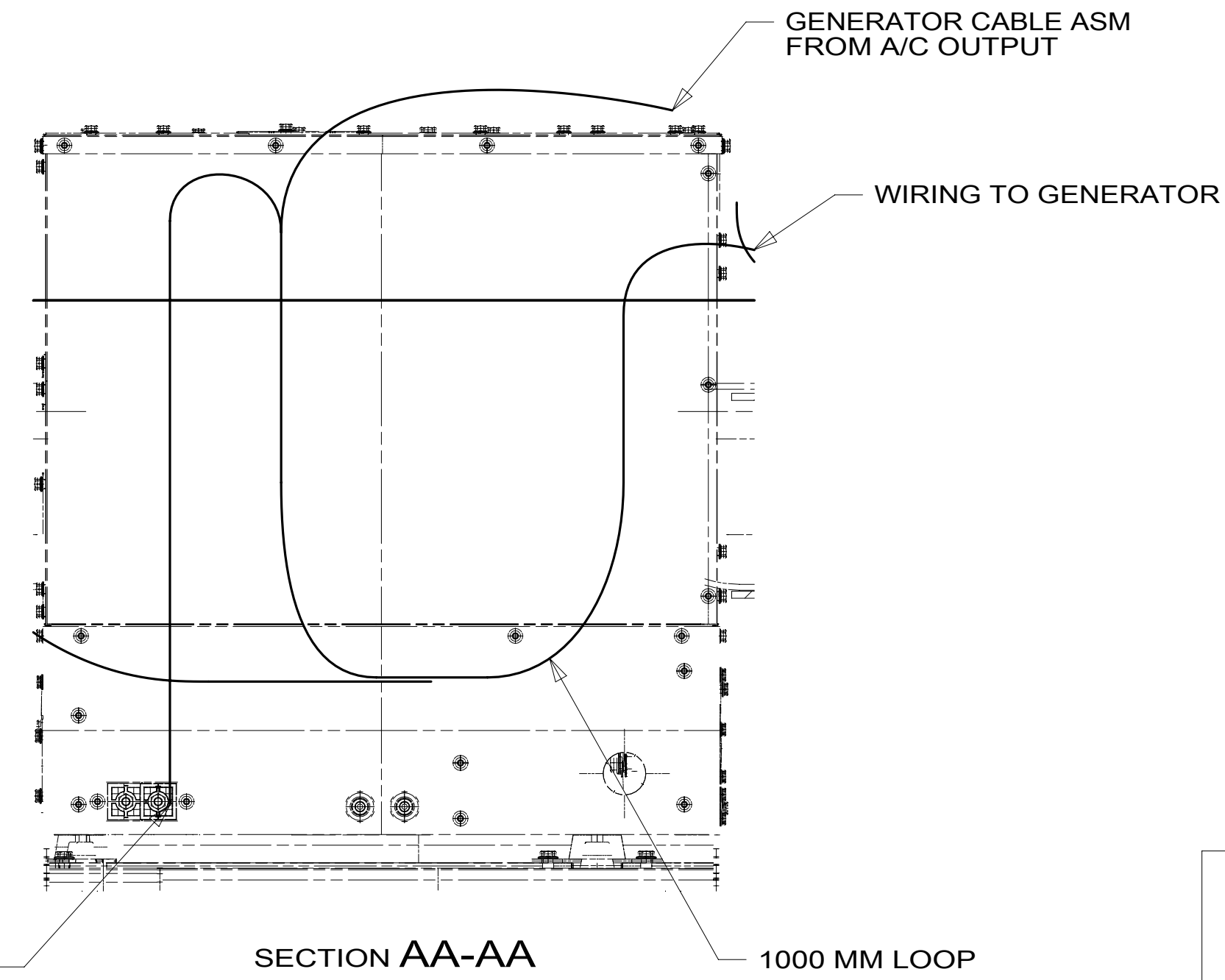
- NOTES:**
- 10 ROUTE FEMALE END TO PASSENGER PANEL SWITCH, MALE END TO INPUT MODULE UNDER BED.
  - 9 COIL CABLE TO CENTER OF CHASSIS.
  - 8 SEE WIRE ASM-CHASSIS FOR ADDITIONAL INFORMATION.
  - 7 REST WIRE IN FRAME RAIL WHEN APPLICABLE.
  - 6 CLAMP 83610-01-000, SCREW G39-08-12B
  - 5 CLAMP 10497-03-000, SCREW G39-08-12B
  - 4 USE TIE-WIRE 8343-04-000 TO SECURE WIRES TO FLOOR SUPPORT FRAME AT LEAST ONCE EVERY 600MM.
  - 3 SEE BATTERY INSTL FOR ADDITIONAL INFORMATION.
  - 2 SEE WIRING INSTL-FRONT END FOR ADDITIONAL INFORMATION.
  - 1 SECURE CORD AWAY FROM ALL MOVING PARTS AND EXHAUST WITH WIRE-TIE 93147-01-000 AS REQUIRED.

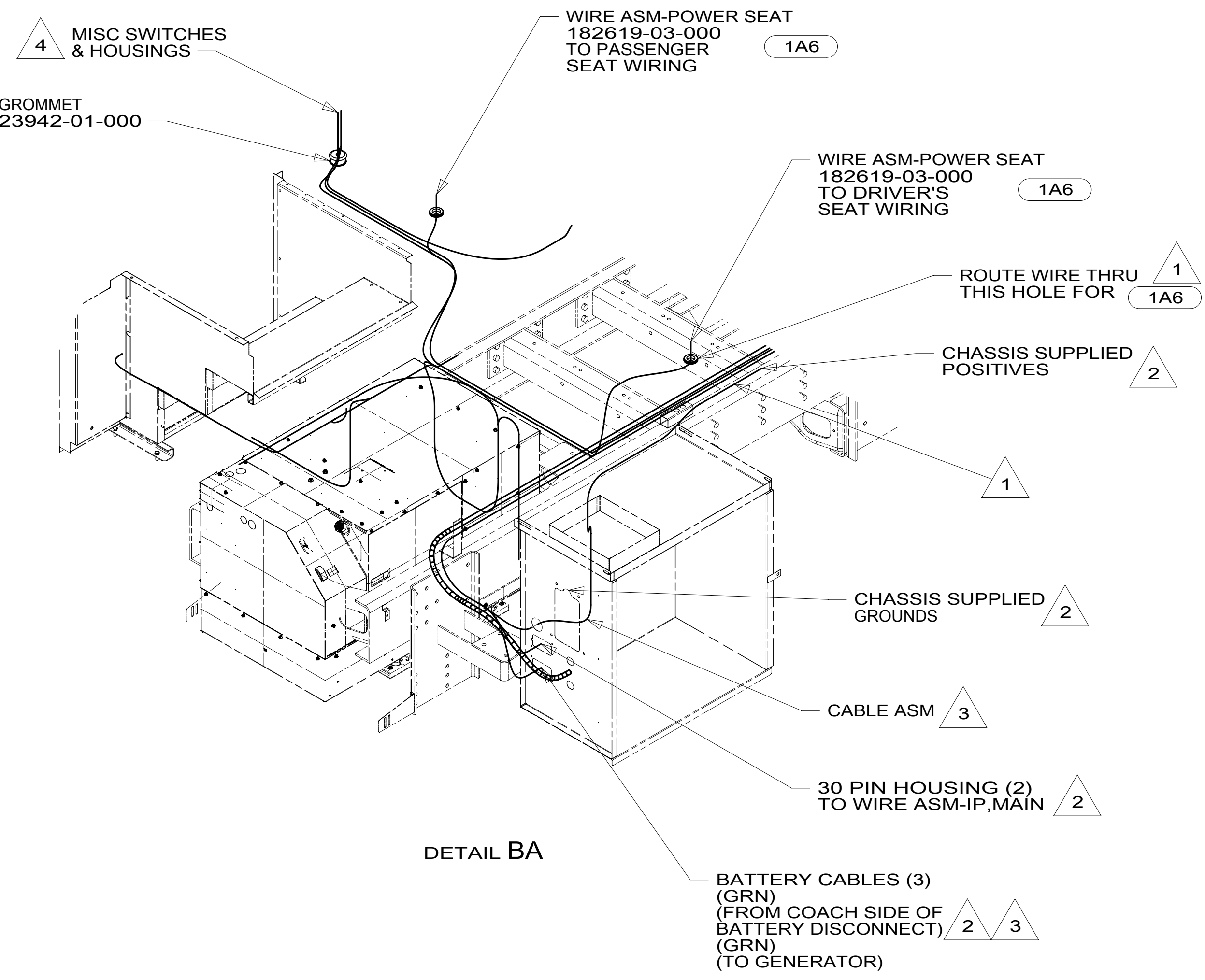
- 265 CODES/STANDARDS-CSA/CMVSS
- 1B1 CODES/STANDARDS USA
- 1B1 265

<b>WINNEBAGO</b> COPYRIGHT 2016 WINNEBAGO INDUSTRIES, INC.	
DSNR:	ALL DIMENSIONS ARE IN MILLIMETERS
DFFR:	
UNSPECIFIED TOLERANCES:	MATERIAL:
WHOLE DIM (X) : 3	
ONE-PLACE (X.X) : 1.5	
TWO-PLACE (X.XX) : 0.50	
ANGLE : 1°	
REFER TO ES0018 FOR FASTENER TIGHTENING GUIDELINES	WEIGHT: (LBS) FIRST USED: 16 R42HD
<b>DESCRIPTION:</b> <b>WIRING INSTL-CHASSIS</b>	
SHEET: 1 OF 3	ITEM/PART NO: 000179412 / 30013301000
REF:	1 06-Jan-2017

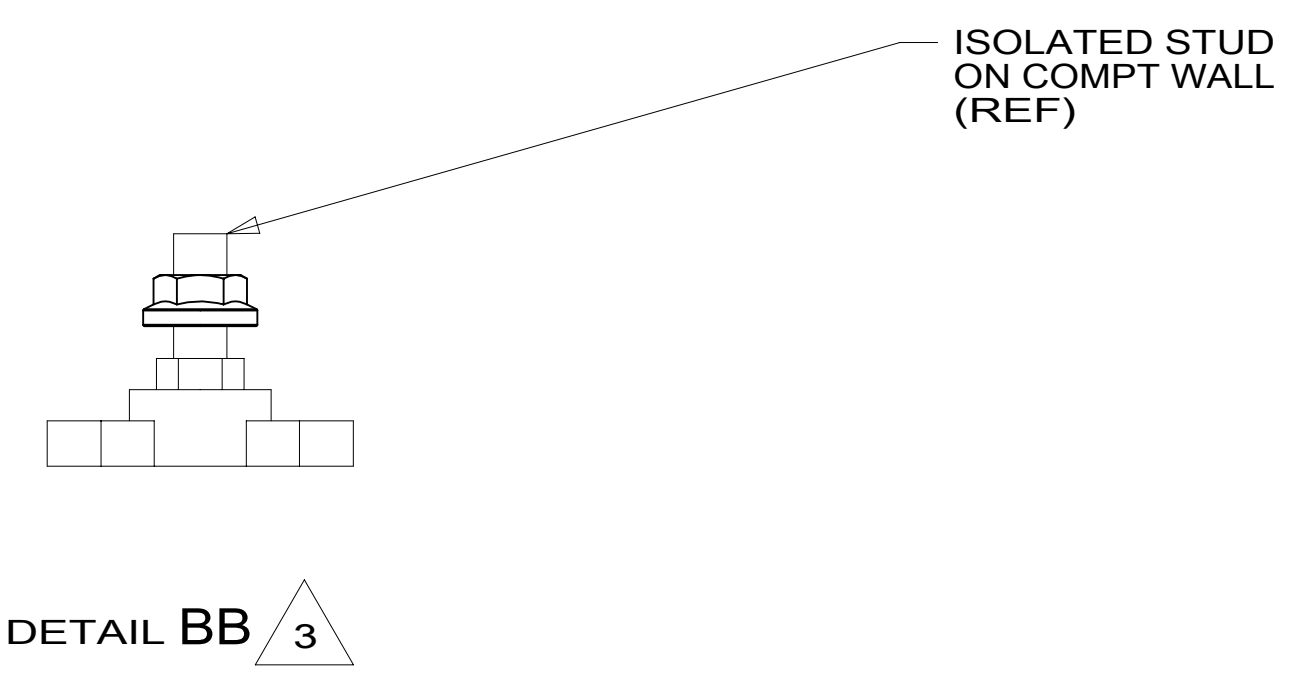
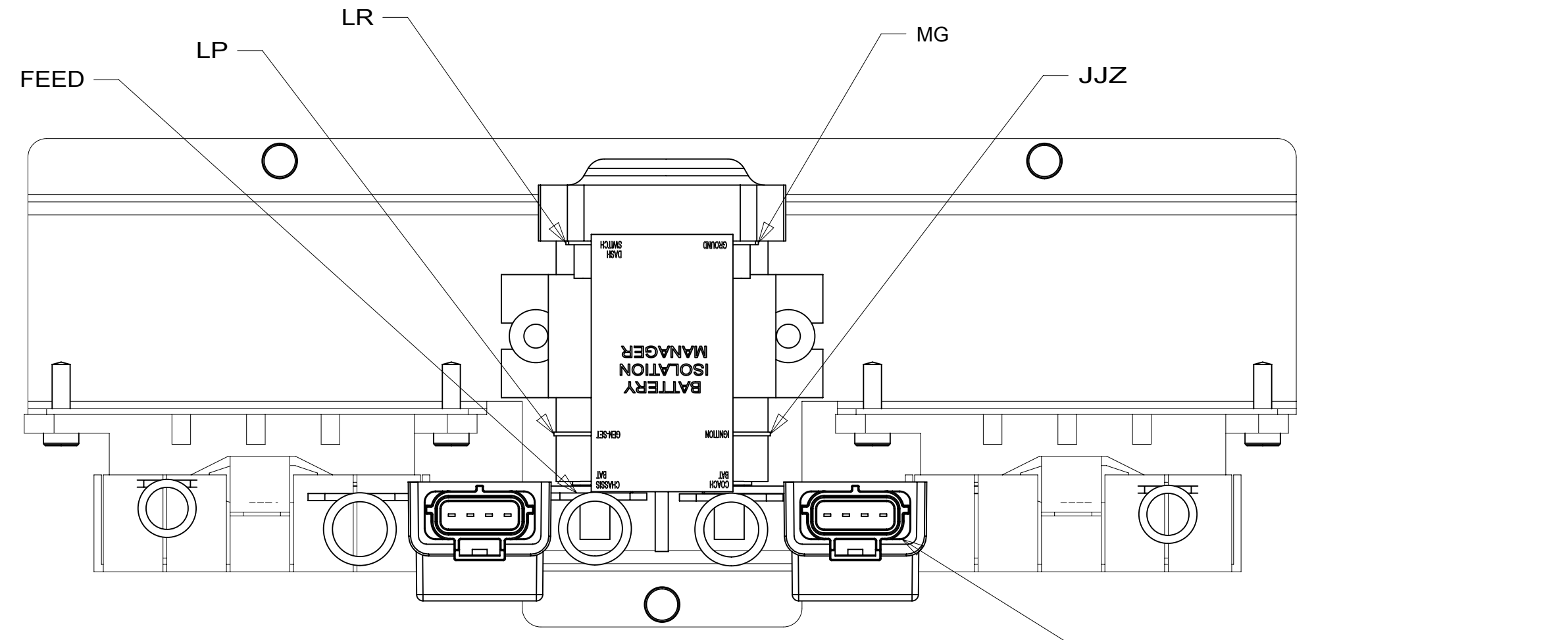
FOR ELECTRICAL TORQUE SPECIFICATIONS SEE DWG NO. 128783-01-000

FOR ELECTRICAL CALLOUTS SEE DWG NO. 121339-01-000





DETAIL BA



DETAIL BB 3

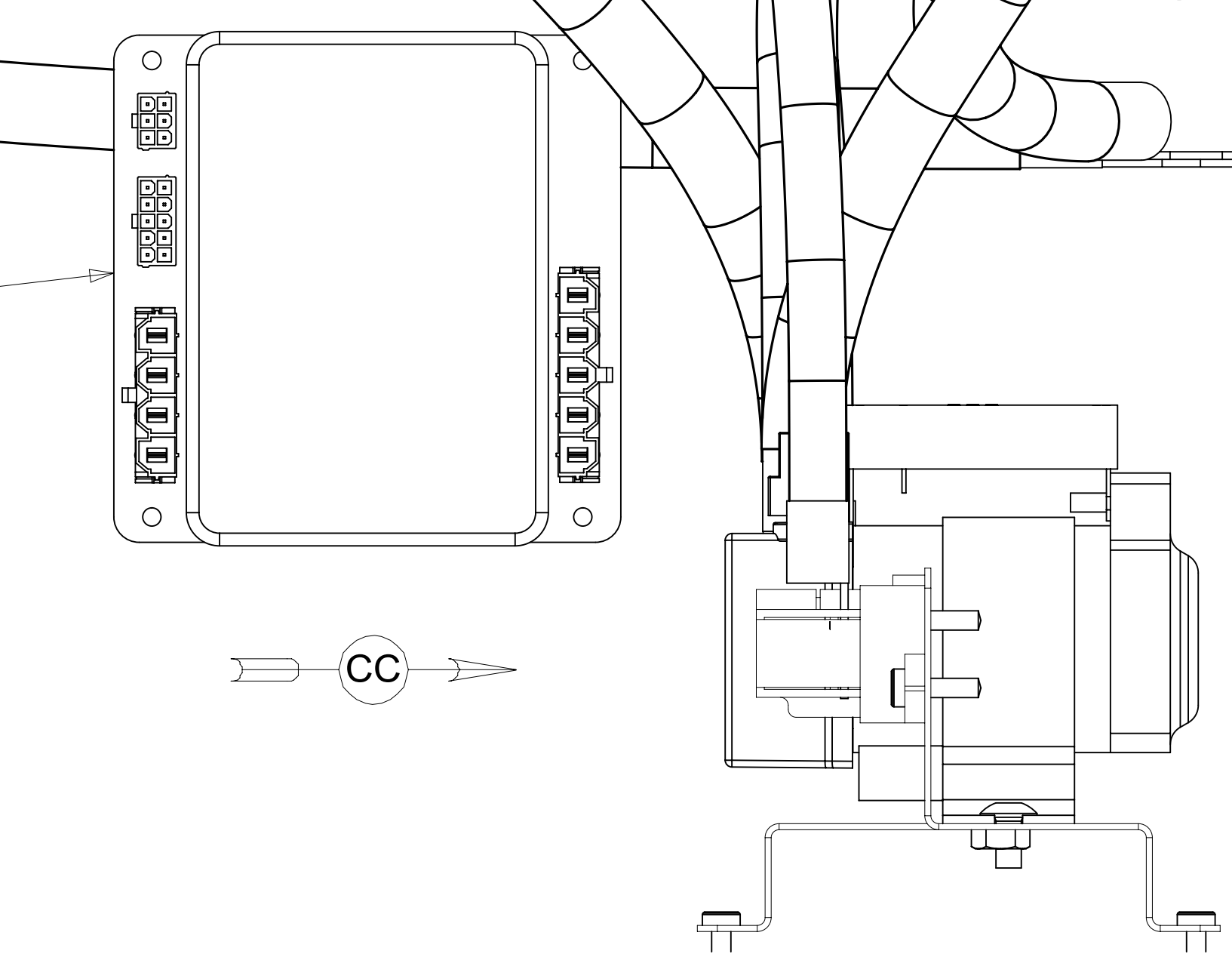
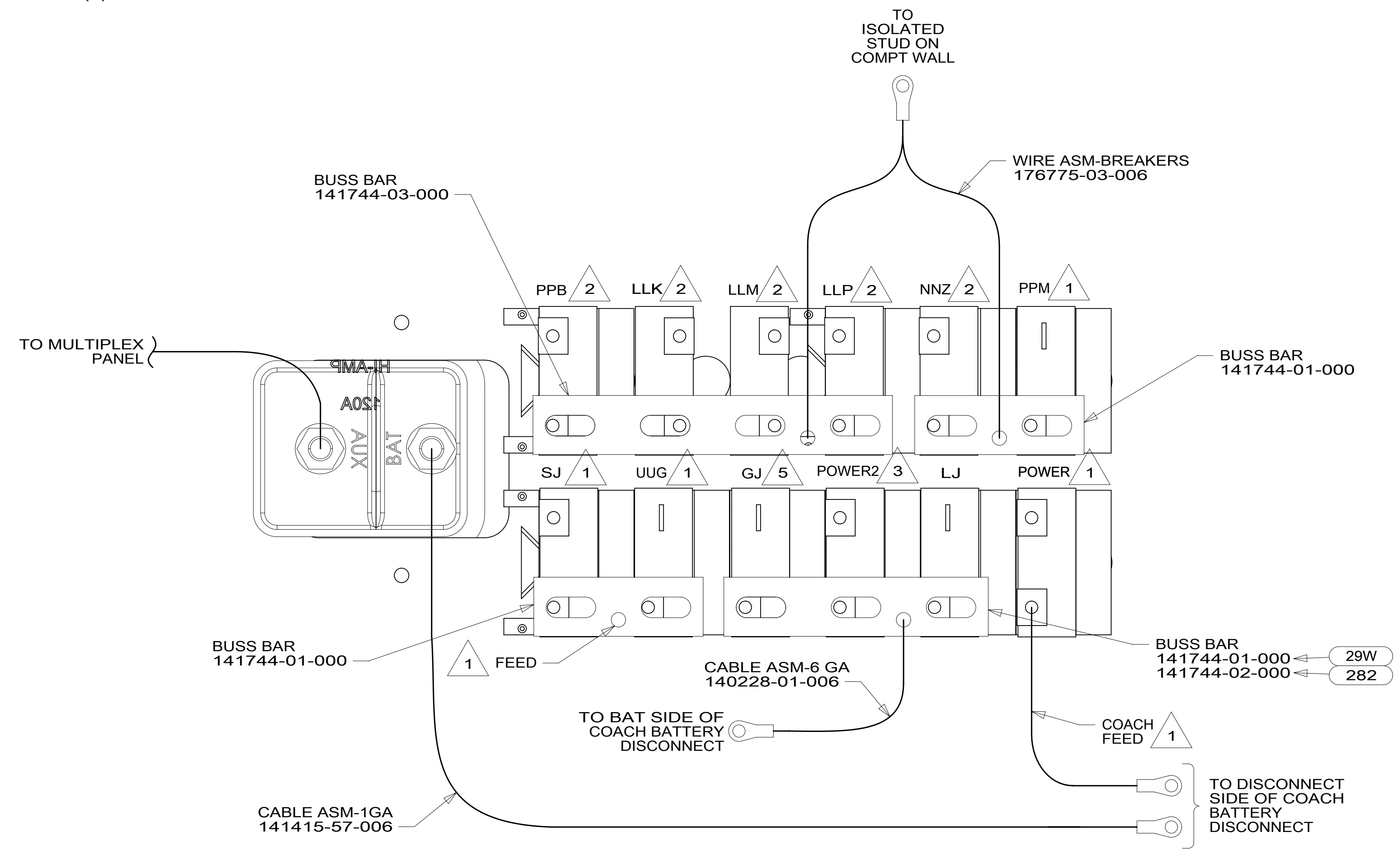
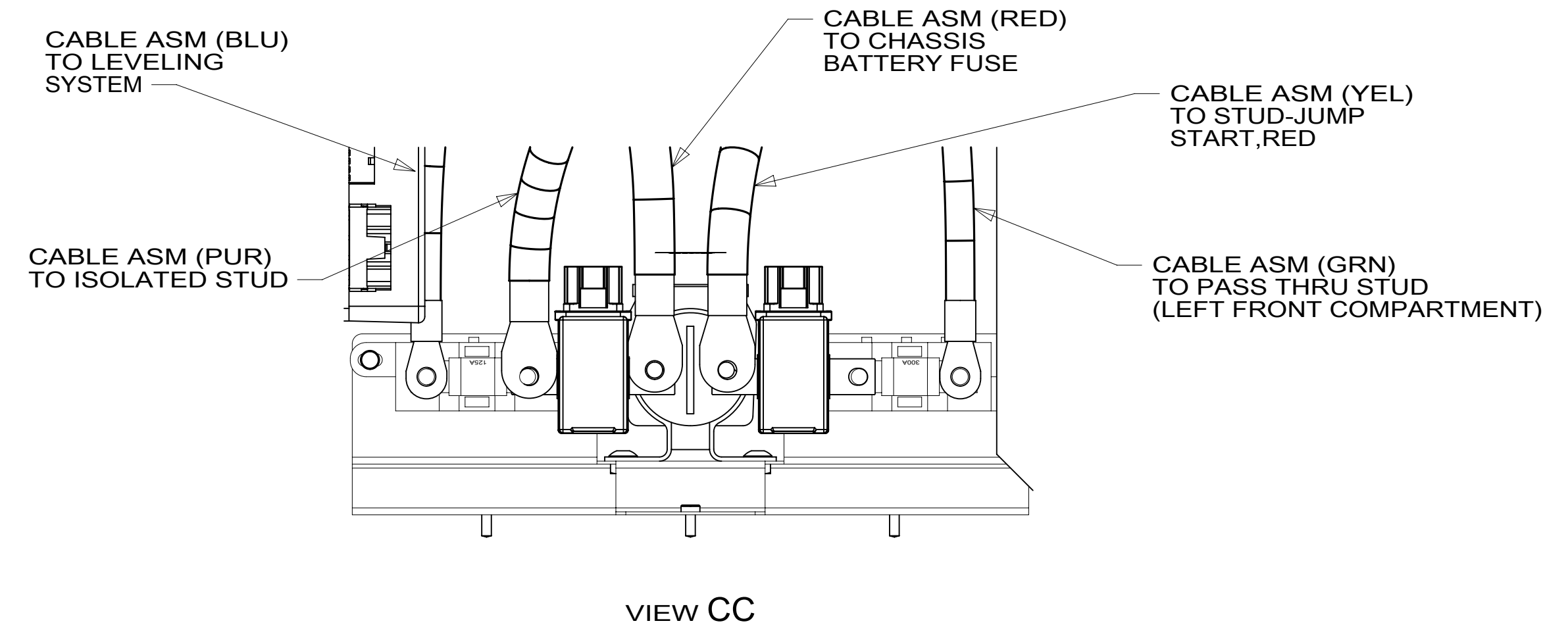
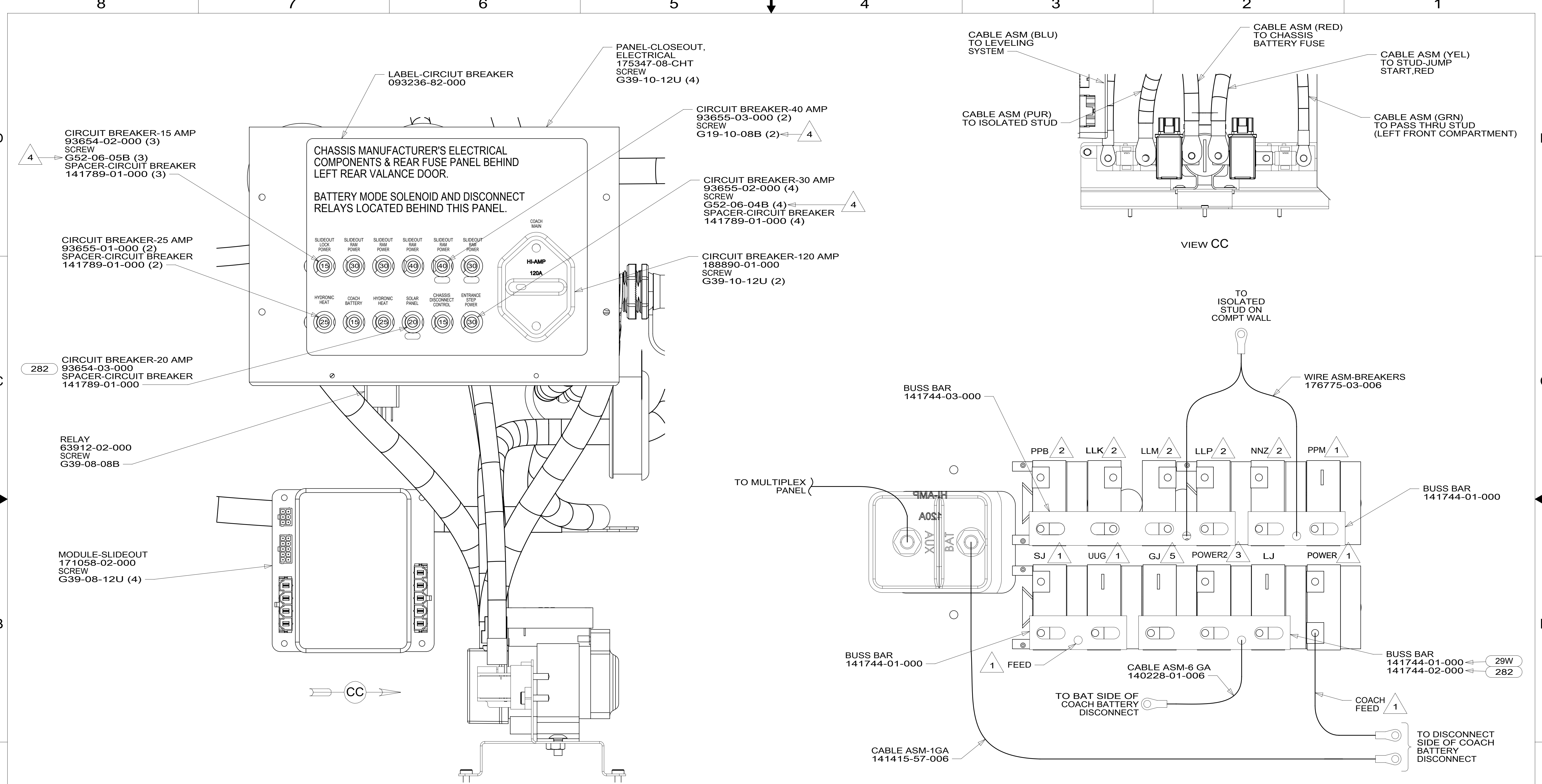
- NOTES:
- 4 SEE WIRE ASM-CHASSIS FOR ADDITIONAL INFORMATION.
  - 3 SEE BATTERY INSTL FOR ADDITIONAL INFORMATION.
  - 2 SEE WIRING INSTL-FRONT END FOR ADDITIONAL INFORMATION.
  - 1 USE PLUG-PLASTIC 61420-12-000 FOR UNUSED HOLE & SEAL.

- 1A6 SEATS-DRIVER/PASSENGER
- 265 CODES/STANDARDS-CSA/CMVSS
- 1B1 CODES/STANDARDS USA

FOR ELECTRICAL TORQUE SPECIFICATIONS SEE DWG NO. 128783-01-000

FOR ELECTRICAL CALLOUTS SEE DWG NO. 121339-01-000

DESCRIPTION:		<b>WIRING INSTL-CHASSIS</b>	
SHEET:	ITEM/PART NO.:	REV	
2 OF 3	000179412 / 30013301000		



- NOTES:
- 5 FROM WIRE ASM-CHASSIS. TIE BACK TO HARNESS WITH 29W
  - 4 REPLACE EXISTING SCREW TO PROPERLY ATTACH BREAKER TO BUSS BAR.
  - 3 FROM WIRE ASM-CHASSIS. MARKED WITH YELLOW TAPE.
  - 2 FROM WIRE ASM-SLIDEOUT ROOMS.
  - 1 FROM WIRE ASM-CHASSIS.

- 29W SOLAR PANEL/BATTERY CHRNG W/O
- 282 SOLAR PANEL - 100 WATT
- 265 CODES/STANDARDS-CSA/CMVSS
- 1B1 CODES/STANDARDS USA

FOR ELECTRICAL TORQUE SPECIFICATIONS SEE DWG NO. 128783-01-000

FOR ELECTRICAL CALLOUTS SEE DWG NO. 121339-01-000

DESCRIPTION: <b>WIRING INSTL-CHASSIS</b>		
SHEET: 3 OF 3	ITEM/PART NO: 000179412 / 30013301000	REV