

RED	1B1	136135-07-060	2
	265	136136-07-060	
YEL	1B1	136131-05-075	2
	265	136134-05-075	
BLK	1B1	136131-06-075	2
	265	136134-06-075	
BRN	1B1	136131-03-120	2
	265	136134-03-120	
BLU	1B1	136131-02-087	2
	265	136134-02-087	
GRN	1B1	136135-08-060	2
	265	136136-08-060	
PUR	1B1	136131-04-093	2
	265	136134-04-093	
WHT	1B1	136135-09-054	2
	265	136136-09-054	
MAIN	1B1	176841-01-048	2
	265	176841-01-048	
GROUND MAIN		136145-01-039	
GROUND ATS		136145-01-022	
GRY	1B1	136131-15-077	2
	265	136134-15-077	
GLD	1B1	136131-10-077	2
	265	136134-10-077	
INVERTER CHARGER MAIN	1B1	136137-01-012	2
	265	136138-01-012	
INVERTER CHARGER SUB MAIN	1B1	136137-01-012	2
	265	139138-01-012	
GLD-2	1B1	136131-20-077	2
	265	136134-20-077	

SLIDEOUT WIRE #1		136151-04-050	3
SLIDEOUT WIRE #2		136151-02-050	3
SLIDEOUT WIRE #3		136151-05-050	3
SLIDEOUT WIRE #4		136151-06-050	3
SLIDEOUT WIRE #5		136151-15-050	3
SLIDEOUT WIRE #6		136151-03-012	3
SLIDEOUT WIRE #7		136151-10-050	3
SLIDEOUT WIRE #8		136151-20-050	3
THROW IN WIRE #1	1B1	136131-04-041	2
	265	136134-04-041	
THROW IN WIRE #2	1B1		2
	265		
THROW IN WIRE #3	1B1	136131-04-117	2
	265	136134-04-117	
THROW IN WIRE #4	1B1	136131-02-025	2
	265	136134-02-025	
THROW IN WIRE #5	1B1	136131-02-013	2
	265	136134-02-013	
THROW IN WIRE #6	1B1	136131-05-011	2
	265	136134-05-011	
THROW IN WIRE #7	1B1	136131-06-013	2
	265	136134-06-013	
THROW IN WIRE #8	1B1	136131-15-051	2
	265	136134-15-051	
THROW IN WIRE #9	1B1	136131-03-016	4
	265	136134-03-016	
THROW IN WIRE #10	1B1	136131-03-037	2
	265	136134-03-037	
THROW IN WIRE #11	1B1	136131-10-027	2
	265	136134-10-027	
THROW IN WIRE #12	1B1	136131-02-046	1DG
	265	136134-02-046	
THROW IN WIRE #13	1B1	136131-20-033	2
	265	136134-20-033	

- 1DG EXT ENTERTAIN CTR W/TV & CD
- 265 CODES/STANDARDS-CSA/CMVSS
- 1B1 CODES/STANDARDS USA

WINNEBAGO[®]

COPYRIGHT 2016 WINNEBAGO INDUSTRIES, INC.

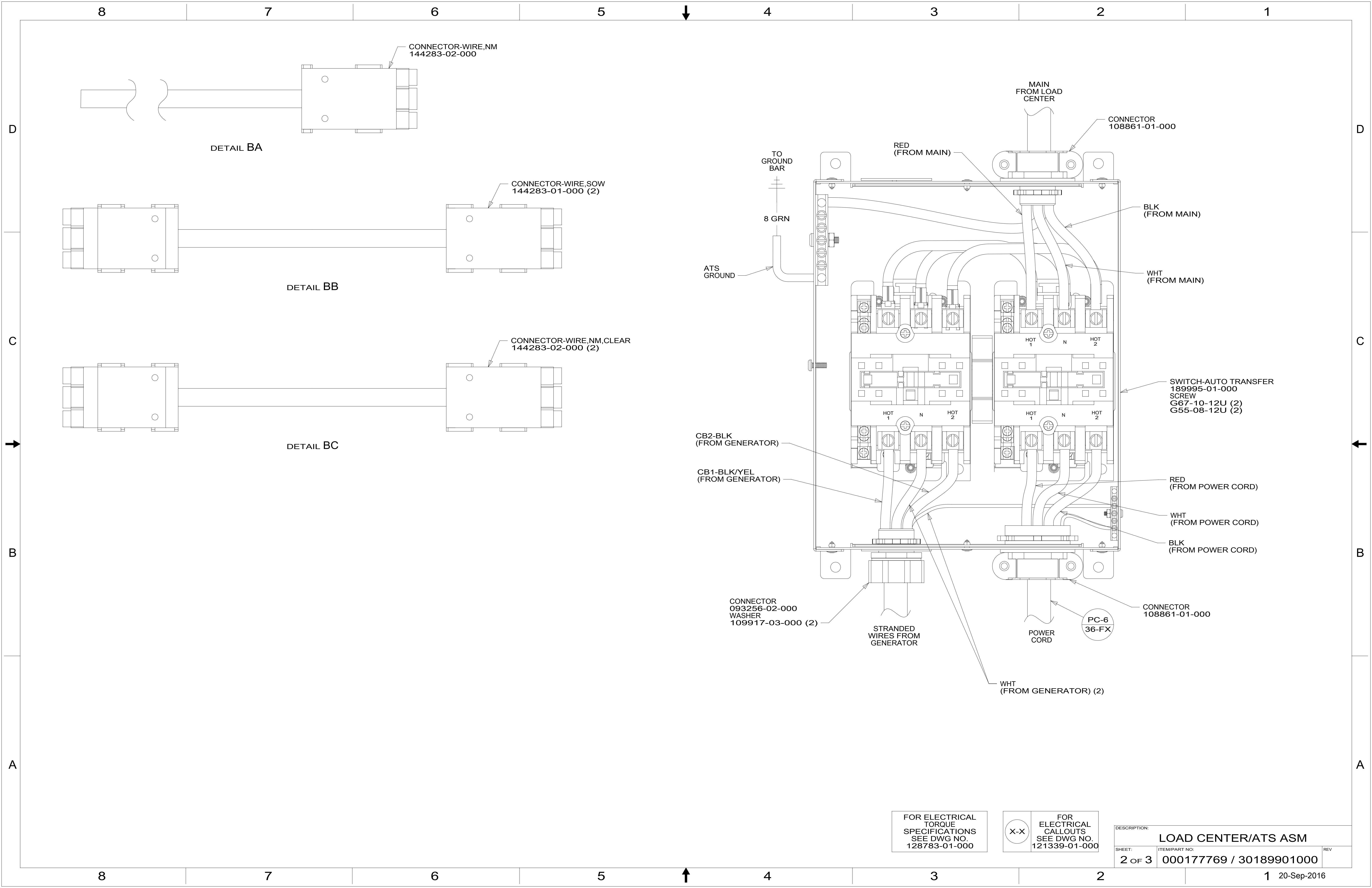
DSNR:		ALL DIMENSIONS ARE IN MILLIMETERS	
DFFR:		16 D36Z	
UNSPECIFIED TOLERANCES:		MATERIAL:	
WHOLE DIM (X)	3		
ONE-PLACE (X.X)	1.5		
TWO-PLACE (X.XX)	0.50		
ANGLE	1°		
REFER TO ES0018 FOR FASTENER TIGHTENING GUIDELINES		WEIGHT: (LBS)	FIRST USED:
			16 D36Z
DESCRIPTION: LOAD CENTER/ATS ASM			
SHEET: 1 OF 3	ITEM/PART NO: 000177769 / 30189901000	REV:	

FOR ELECTRICAL TORQUE SPECIFICATIONS SEE DWG NO. 128783-01-000

FOR ELECTRICAL CALLOUTS SEE DWG NO. 121339-01-000

- 4 SEE DETAIL BC FOR CONNECTOR INSTALLATION.
- 3 SEE DETAIL BB FOR CONNECTOR INSTALLATION.
- 2 SEE DETAIL BA FOR CONNECTOR INSTALLATION.

NOTES:
1. ALL GROUNDS WIRES TO BE COVERED WITH TUBING 8041-02-000.



DETAIL BA

DETAIL BB

DETAIL BC

CONNECTOR-WIRE, NM
144283-02-000

CONNECTOR-WIRE, SOW
144283-01-000 (2)

CONNECTOR-WIRE, NM, CLEAR
144283-02-000 (2)

TO GROUND BAR
8 GRN
ATS GROUND

CB2-BLK (FROM GENERATOR)
CB1-BLK/YEL (FROM GENERATOR)

CONNECTOR
093256-02-000
WASHER
109917-03-000 (2)

STRANDED WIRES FROM GENERATOR

WHT (FROM GENERATOR) (2)

MAIN FROM LOAD CENTER

CONNECTOR
108861-01-000

BLK (FROM MAIN)

WHT (FROM MAIN)

SWITCH-AUTO TRANSFER
18995-01-000
SCREW
G67-10-12U (2)
G55-08-12U (2)

RED (FROM POWER CORD)

WHT (FROM POWER CORD)

BLK (FROM POWER CORD)

CONNECTOR
108861-01-000

PC-6
36-FX

FOR ELECTRICAL TORQUE SPECIFICATIONS SEE DWG NO. 128783-01-000

X-X

FOR ELECTRICAL CALLOUTS SEE DWG NO. 121339-01-000

DESCRIPTION: LOAD CENTER/ATS ASM		
SHEET: 2 OF 3	ITEM/PART NO.: 000177769 / 30189901000	REV

