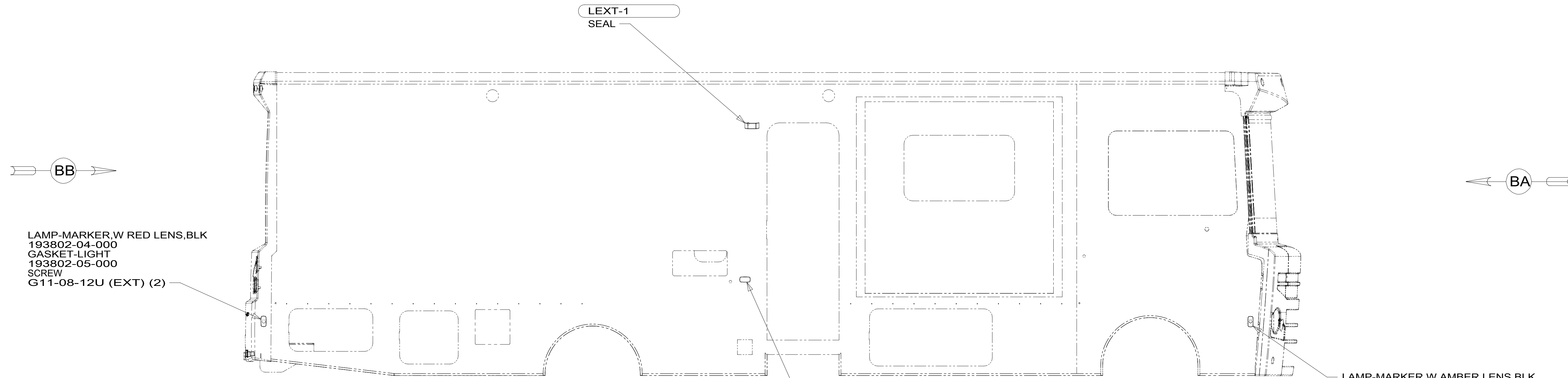


8 7 6 5 4 3 2 1

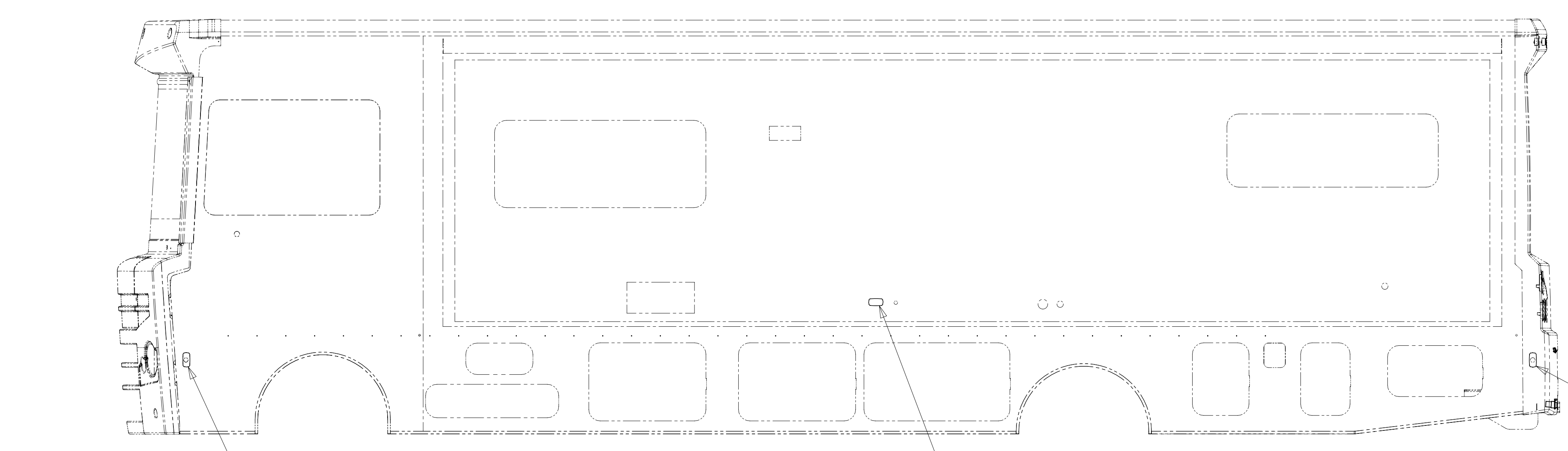


LAMP-MARKER, W RED LENS, BLK
193802-04-000
GASKET-LIGHT
193802-05-000
SCREW
G11-08-12U (EXT) (2)

LAMP-MARKER, W AMBER LENS, BLK
193802-03-000
GASKET-LIGHT
193802-05-000
SCREW
G11-08-12U (EXT) (2)

LAMP-MARKER, W AMBER LENS
193802-01-000
GASKET-LIGHT
193802-05-000
SCREW
000G11-08-12U (EXT) (2)
LAMP-MARKER, W AMBER LENS, BLK
193802-03-000
GASKET-LIGHT
193802-05-000
SCREW
000G11-08-12U (EXT) (2)

- 24E 24A 92D
- 27H 92F 27C
- 27A



LAMP-MARKER, W AMBER LENS, BLK
193802-03-000
GASKET-LIGHT
193802-05-000
SCREW
G11-08-12U (EXT) (2)

LAMP-MARKER, W AMBER LENS
193802-01-000
GASKET-LIGHT
193802-05-000
SCREW
000G11-08-12U (EXT) (2)
LAMP-MARKER, W AMBER LENS, BLK
193802-03-000
GASKET-LIGHT
193802-05-000
SCREW
000G11-08-12U (EXT) (2)

- 24E 24A 92D
- 27H 92F 27C
- 27A

LAMP-MARKER, W RED LENS, BLK
193802-04-000
GASKET-LIGHT
193802-05-000
SCREW
G11-08-12U (EXT) (2)

- 24E EXTERIOR GRAPHICS PACKAGE #3
- 24A EXTERIOR GRAPHICS-PACKAGE #4
- 92D EXTERIOR GRAPHICS PACKAGE #5
- 27H EXTERIOR GRAPHICS PACKAGE #6
- 92F EXTERIOR GRAPHICS PACKAGE #7
- 27C EXTERIOR GRAPHICS PACKAGE #8
- 27A EXT FULL BODY PAINT PKG #1
- 265 CODES/STANDARDS-CSA/CMVSS
- 1B1 CODES/STANDARDS-USA

- 1B1 265



DSNR:		ALL DIMENSIONS ARE IN MILLIMETERS	
DFFR:		MATERIAL:	
UNSPECIFIED TOLERANCES:			
WHOLE DIM (X)	3		
ONE-PLACE (X.X)	1.5		
TWO-PLACE (X.XX)	0.50		
ANGLE	1°		
REFER TO ES0018 FOR FASTENER TIGHTENING GUIDELINES	WEIGHT: (LBS)	FIRST USED:	

FOR ELECTRICAL TORQUE SPECIFICATIONS SEE DWG NO. 128783-01-000

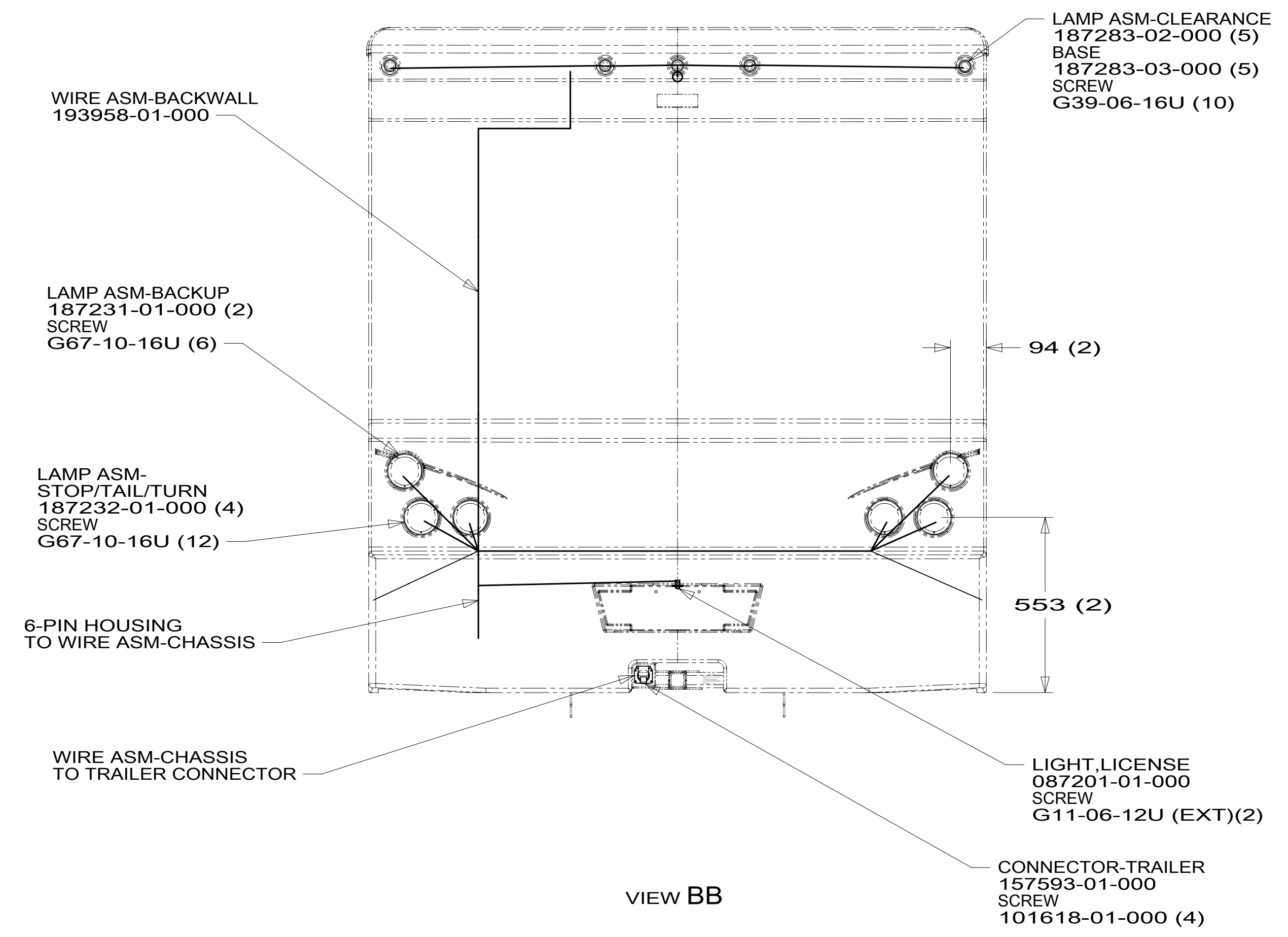
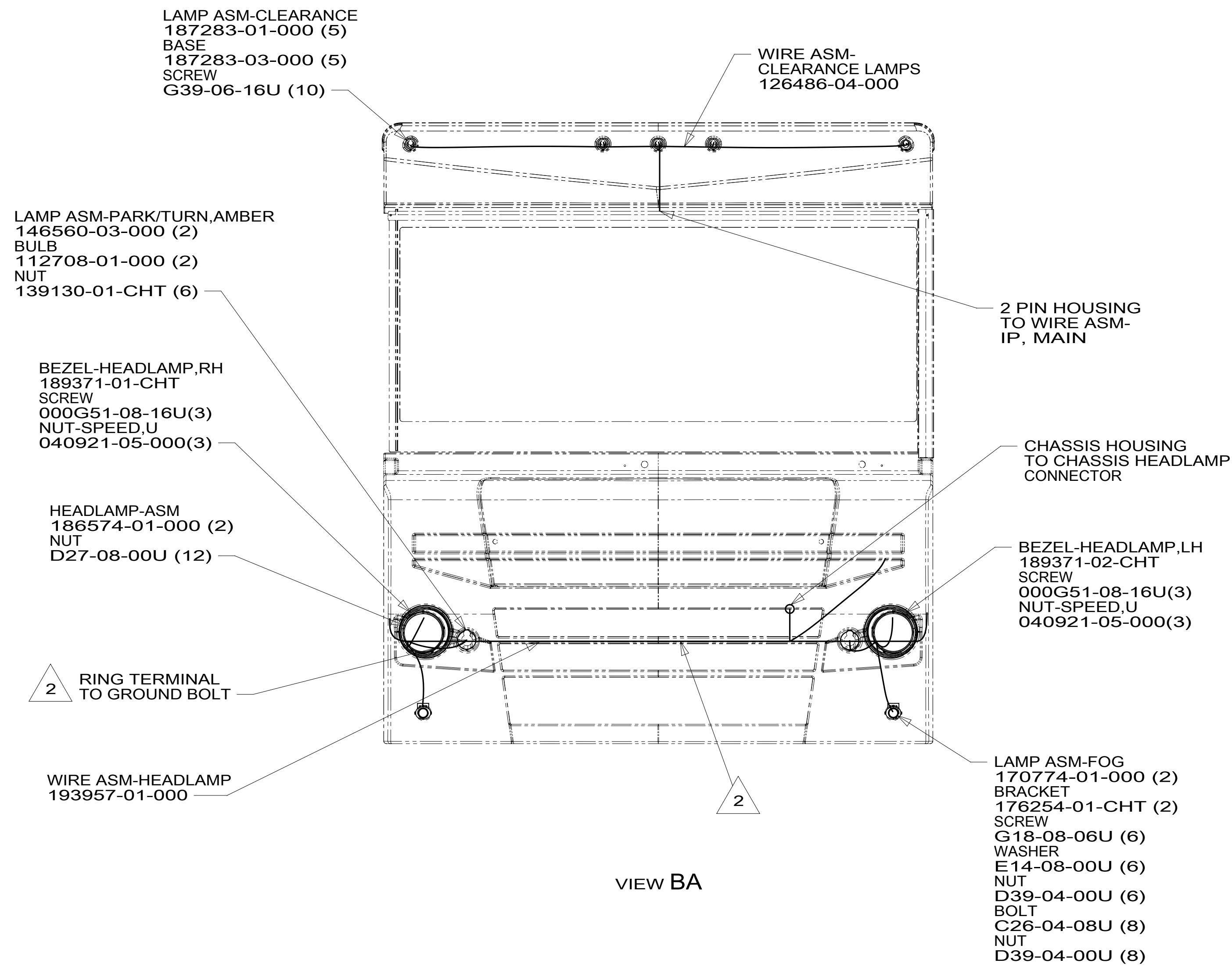
FOR ELECTRICAL CALLOUTS SEE DWG NO. 121339-01-000

WIRING INSTL-EXTERIOR LAMPS

SHEET: 1 OF 2 ITEM/PART NO: 000177388 / 30112101000 REV

8 7 6 5 4 3 2 1

8 7 6 5 4 3 2 1



2 CLEAN PAINT OFF METAL (BOLT) BEFORE CONNECTING GROUND TO INSURE CONTACT. ALSO MOUNT CHASSIS SUPPLIED HORN TO GROUND BOLT.

1. GATHER ALL EXCESS WIRE AFTER MAKING ALL CONNECTIONS AND BUNDLE AND SECURE WITH TIE-WIRE 8343-01-000 OR 93147-01-000.

NOTES:

265 CODES/STANDARDS-CSA/CMVSS
1B1 CODES/STANDARDS USA

FOR ELECTRICAL TORQUE SPECIFICATIONS SEE DWG NO. 128783-01-000

FOR ELECTRICAL CALLOUTS SEE DWG NO. 121339-01-000

DESCRIPTION:	1B1 265	
WIRING INSTL-EXTERIOR LAMPS		
SHEET:	ITEM/PART NO:	REV
2 OF 2	000177388 / 30112101000	

8 7 6 5 4 3 2 1 20-Sep-2016