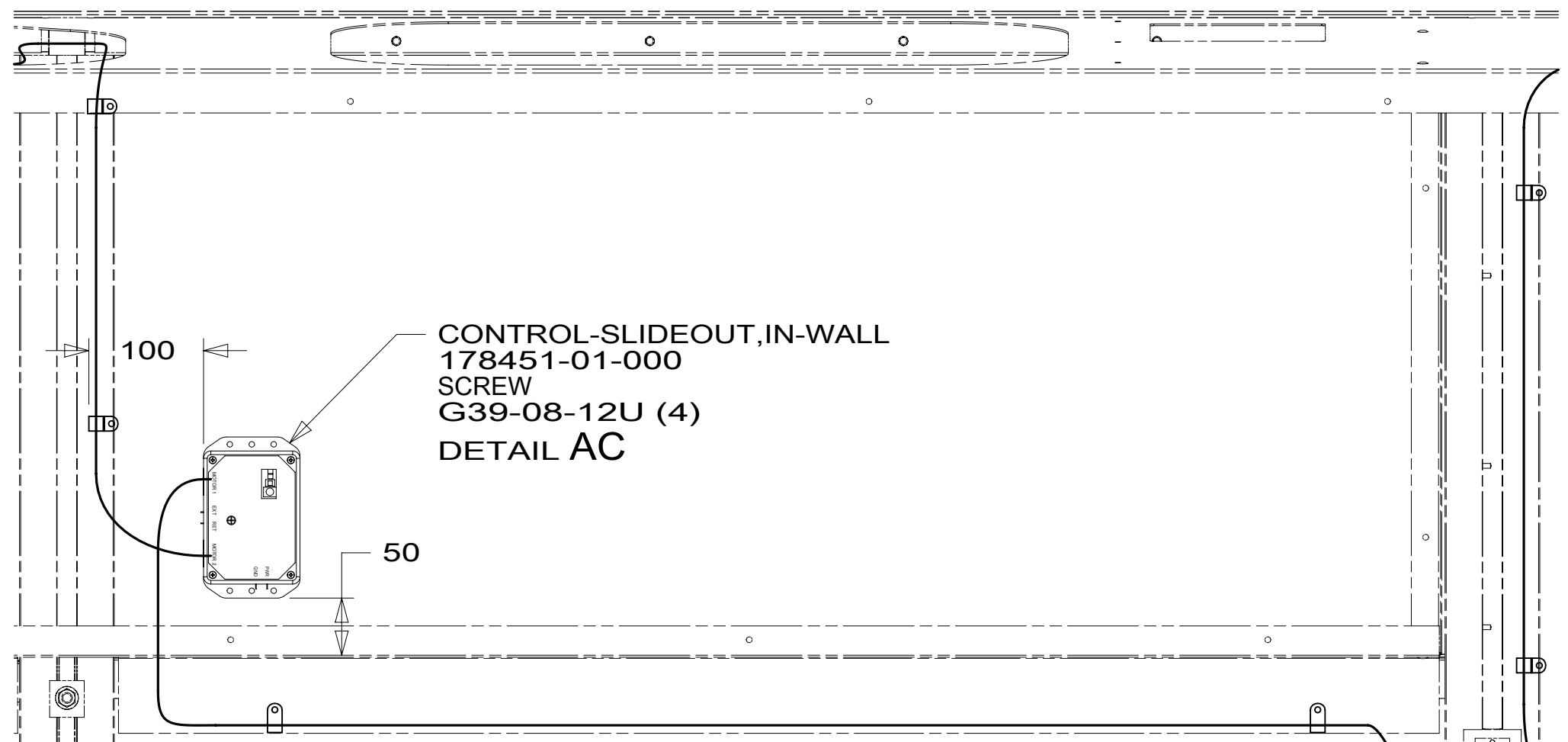


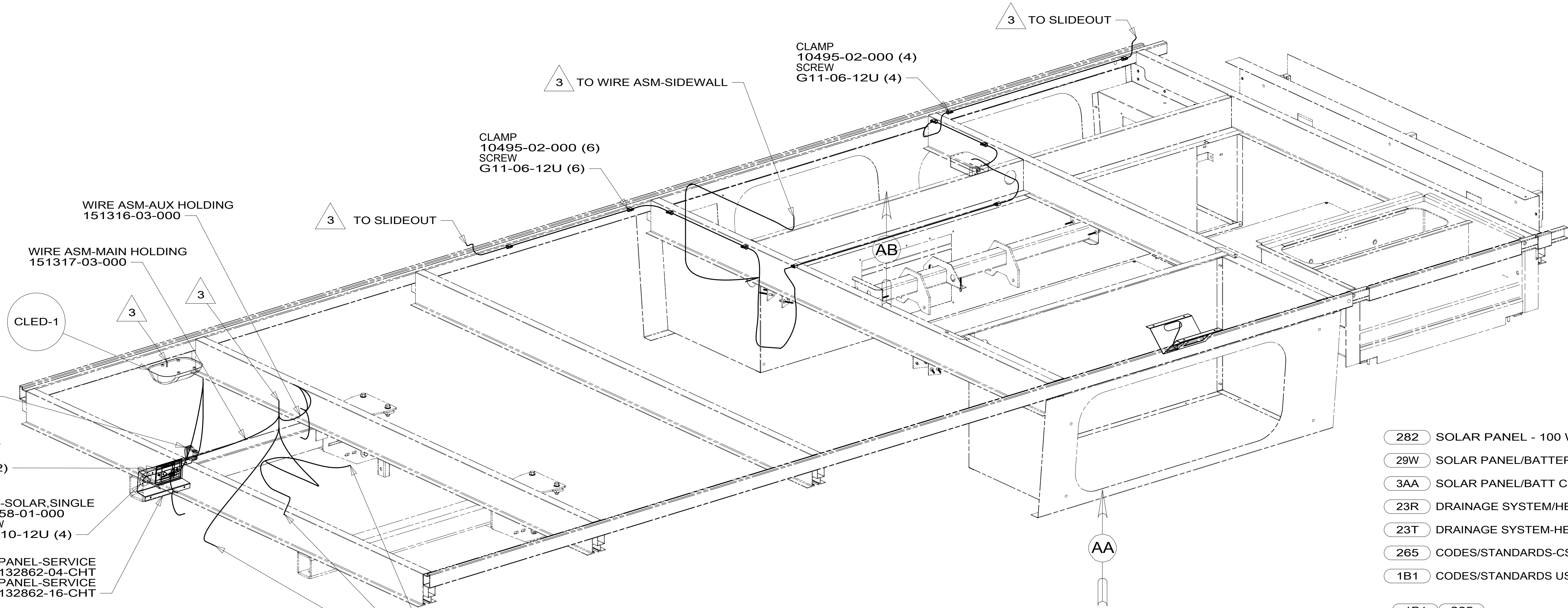
VIEW AA

PANEL-RCP
151376-02-CHT
ADAPTER
082134-01-000
NUT
82136-01-000
LABEL
157486-01-CHT
SCREW
G67-10-12U (4)



VIEW AB

CONTROL-SLIDEOUT, IN-WALL
178451-01-000
SCREW
G39-08-12U (4)
DETAIL AC



WIRE ASM-AUX HOLDING
151316-03-000

WIRE ASM-MAIN HOLDING
151317-03-000

CLED-1

SWITCH-PUMP
108357-21-000
ACTUATOR
108356-23-CHT

PLATE-COAX
149557-03-CHT
SCREW
G39-08-08U (2)

PORT-SOLAR, SINGLE
191558-01-000
SCREW
G39-10-12U (4)

PANEL-SERVICE
132862-04-CHT
PANEL-SERVICE
132862-16-CHT

4 282 OR 3AA

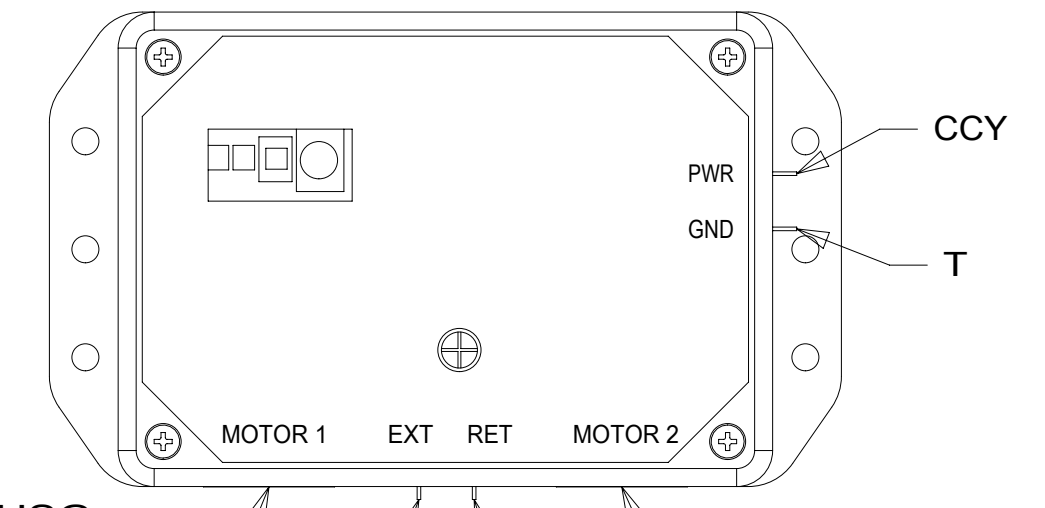
282 OR 3AA

- 4 SPLICE YELLOW TO RED AND WHITE TO BLACK.
- 3 WIRE ROUTED THROUGH FLOOR IN THIS AREA.

2. ROUTE TANK SENSOR WIRES SO THEY DO NOT PASS OVER SENSORS. USE WIRE TIE MOUNT 155366-01-000 AS NEEDED. TANK SURFACE MUST BE CLEANED USING ISOPROPYL ALCOHOL AND PRIME WITH PRIMER 94.

1. AT MINIMUM ALL WIRES TO BE SUPPORTED AND SECURED PER CODE REQUIREMENTS. USE CLAMP 10495 OR 10497 OR WIRE TIE 8343 OR 108046 AND SCREW G67-XX-XXX OR G56-XX-XXX AS APPROPRIATE FOR INSTALLATION.

NOTES:



VIEW AC

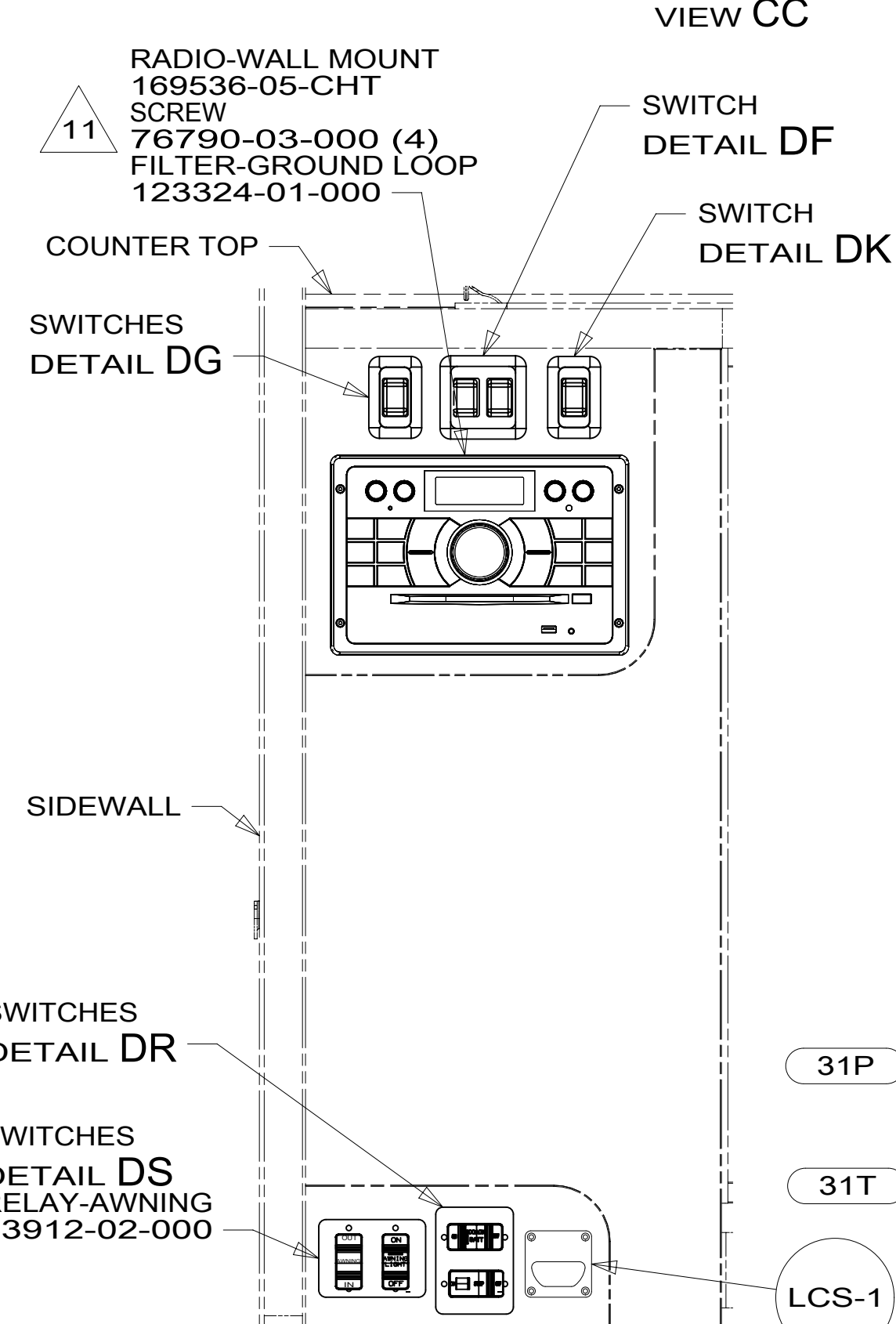
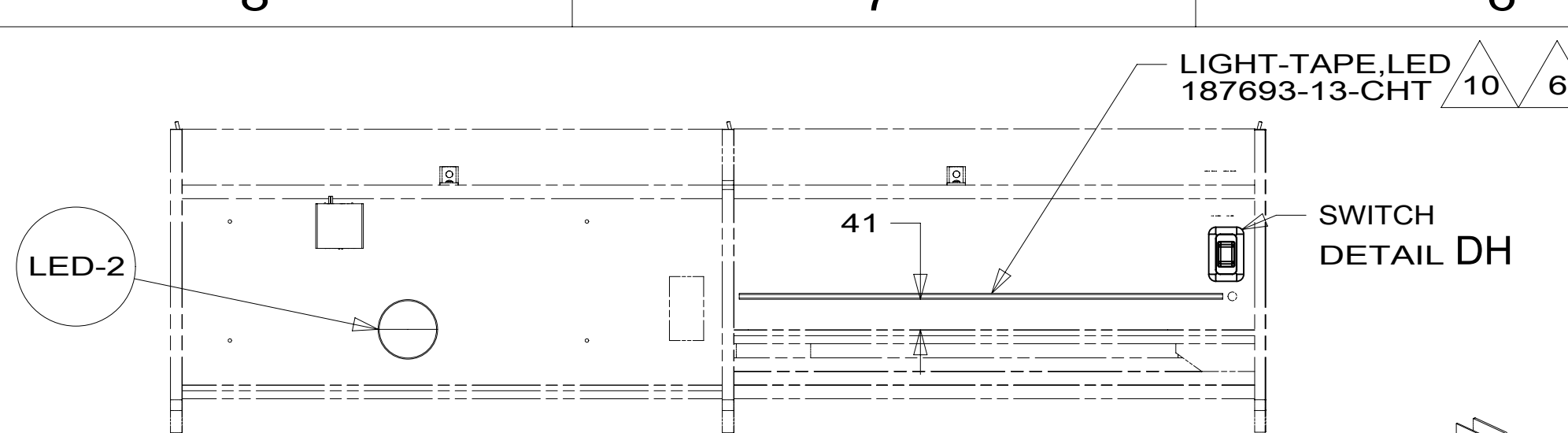
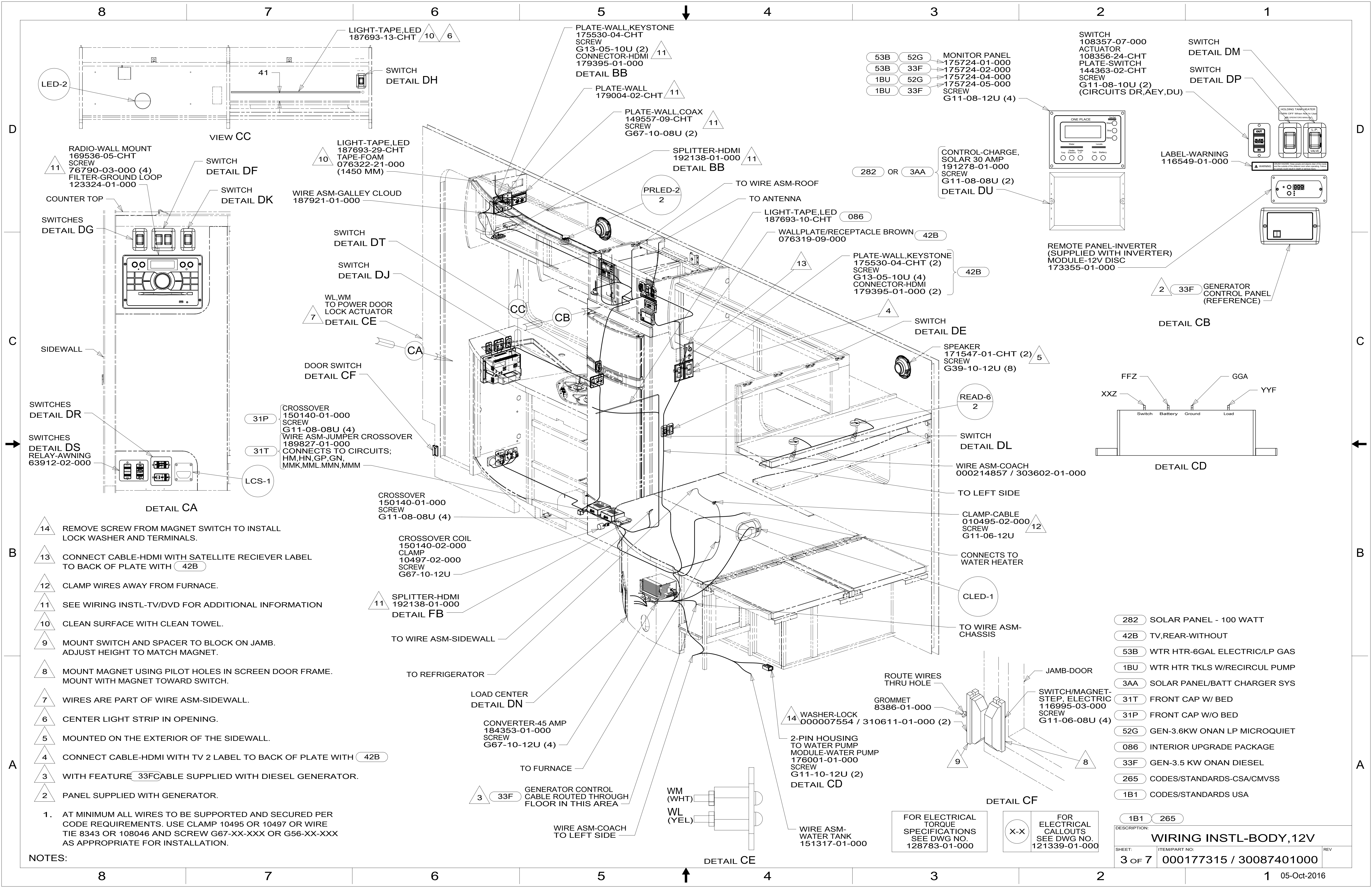
FOR ELECTRICAL TORQUE SPECIFICATIONS SEE DWG NO. 128783-01-000

FOR ELECTRICAL CALLOUTS SEE DWG NO. 121339-01-000

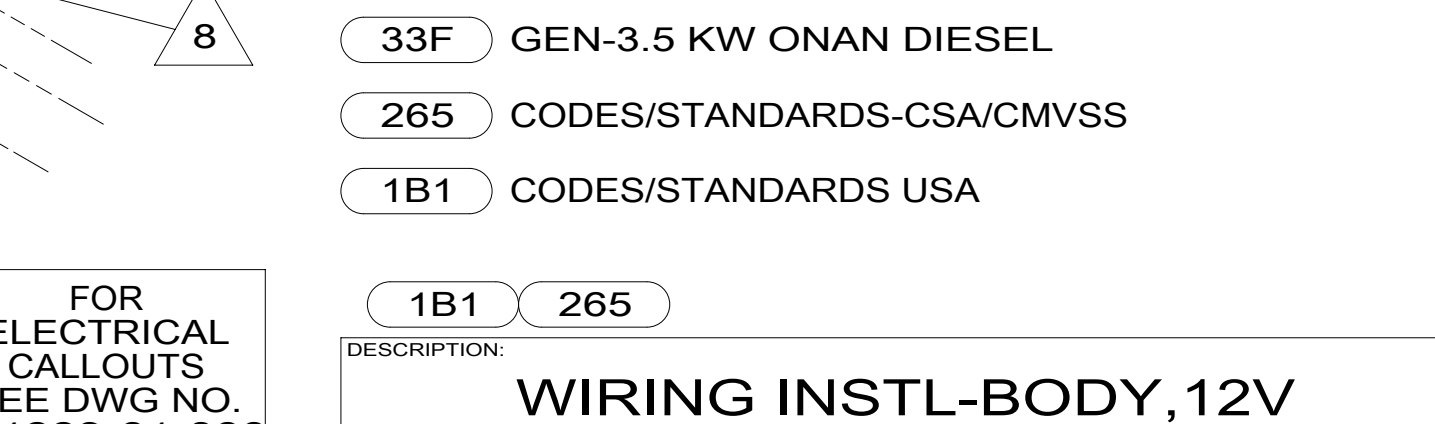
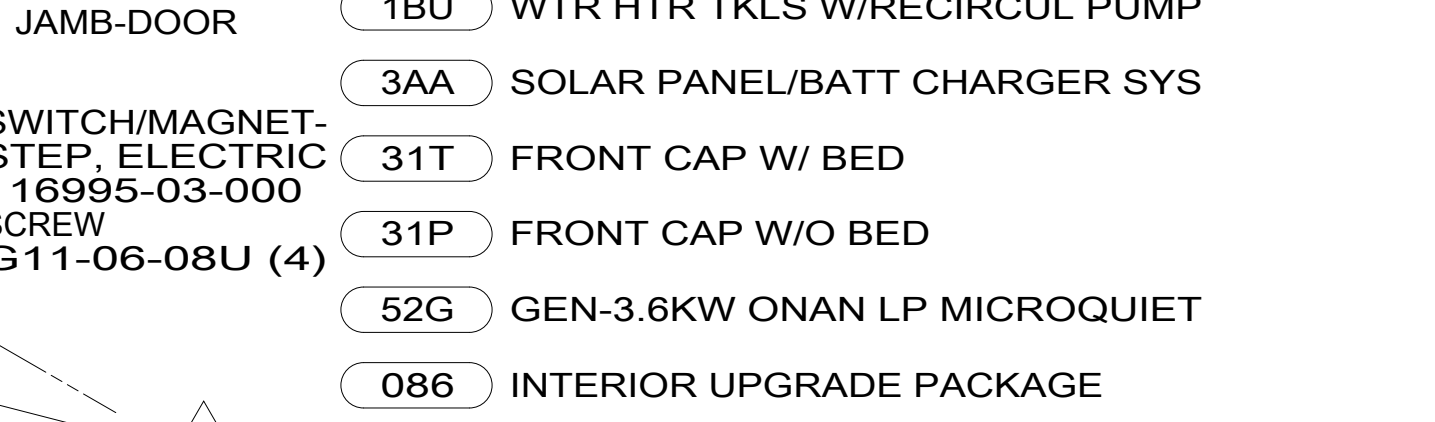
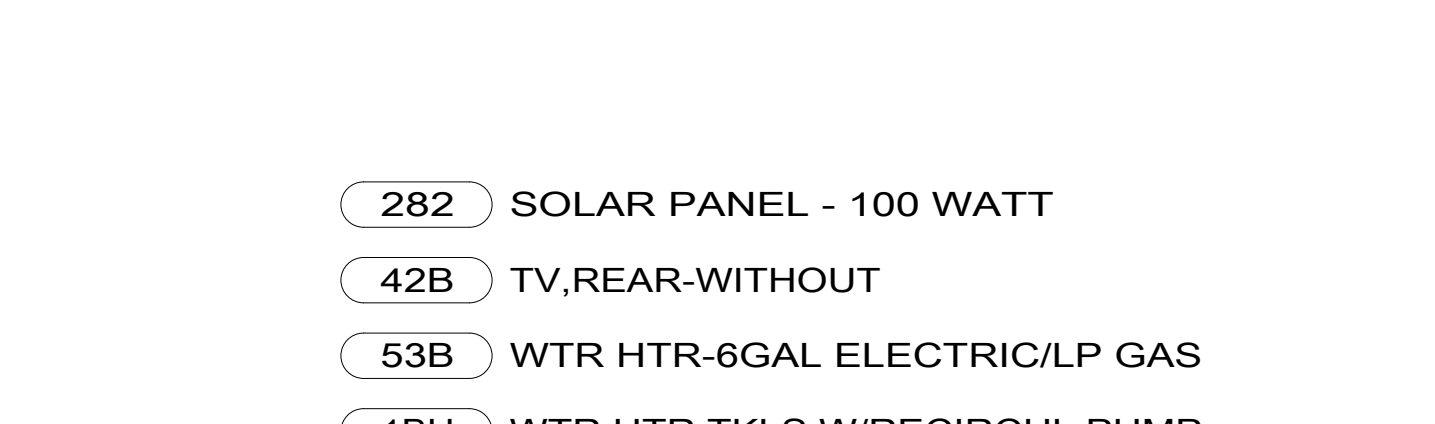
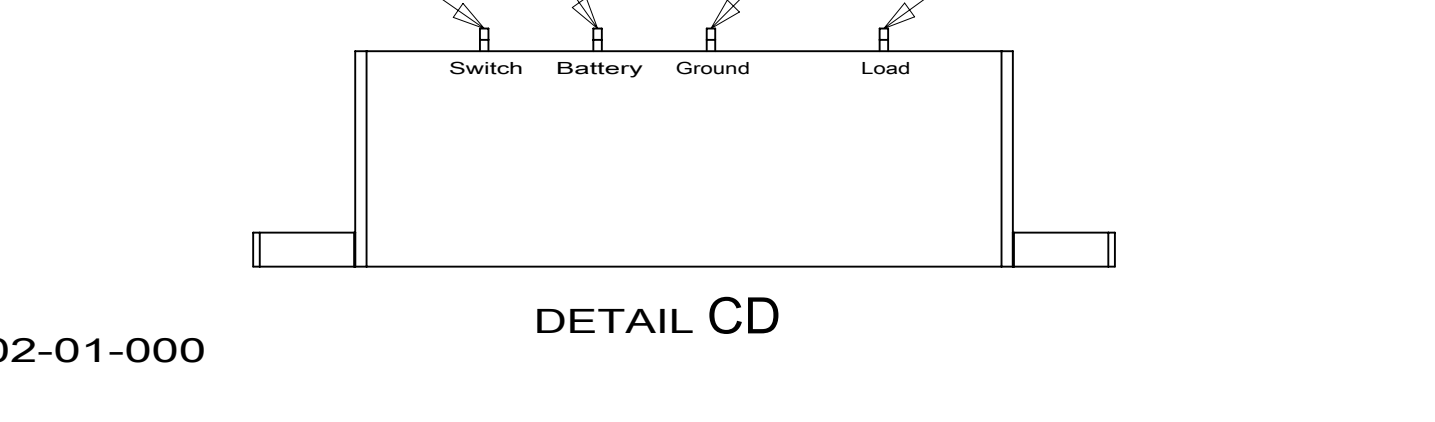
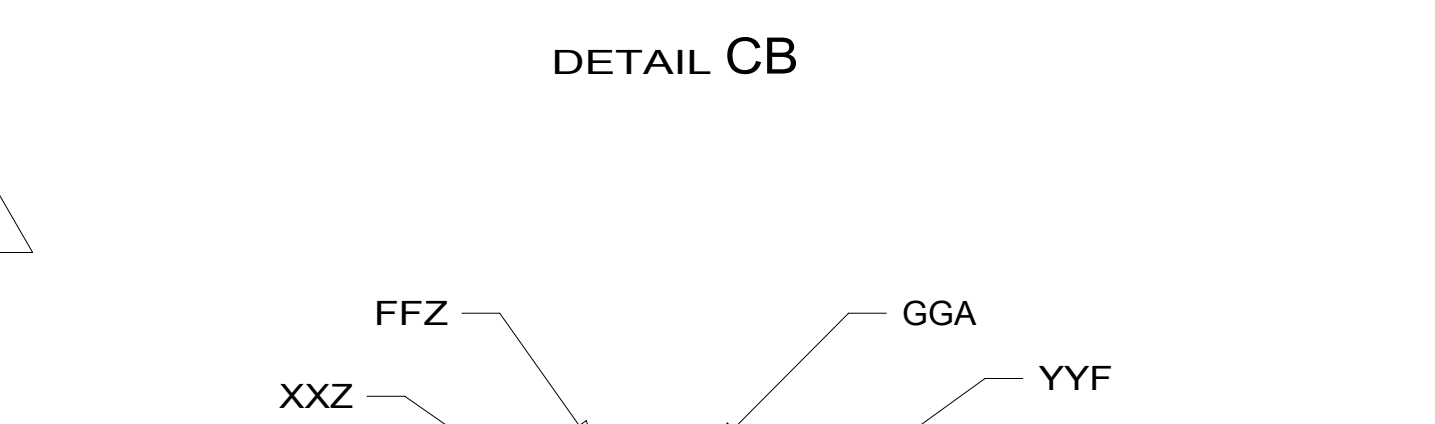
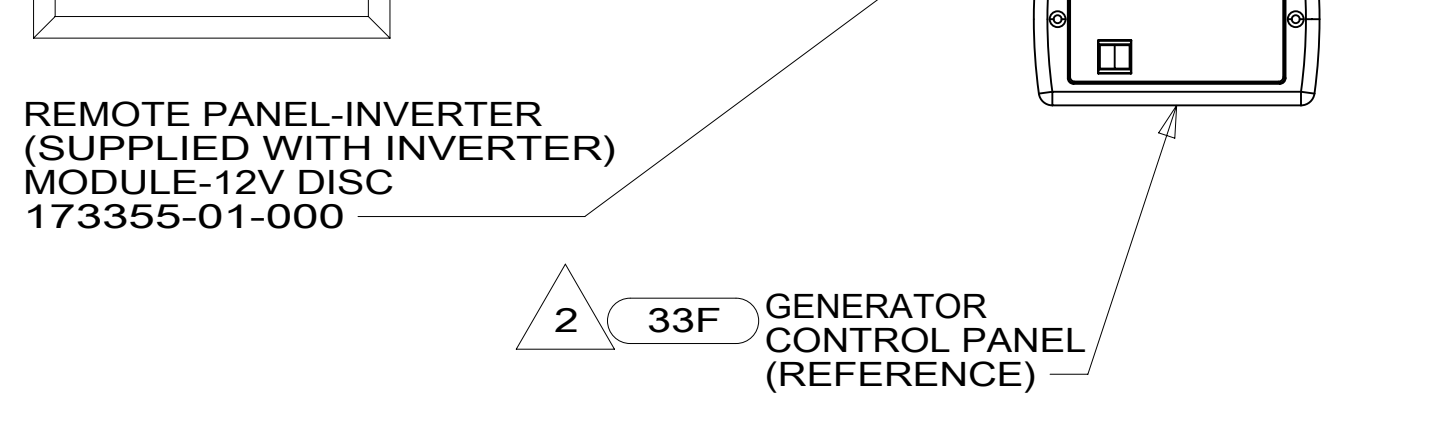
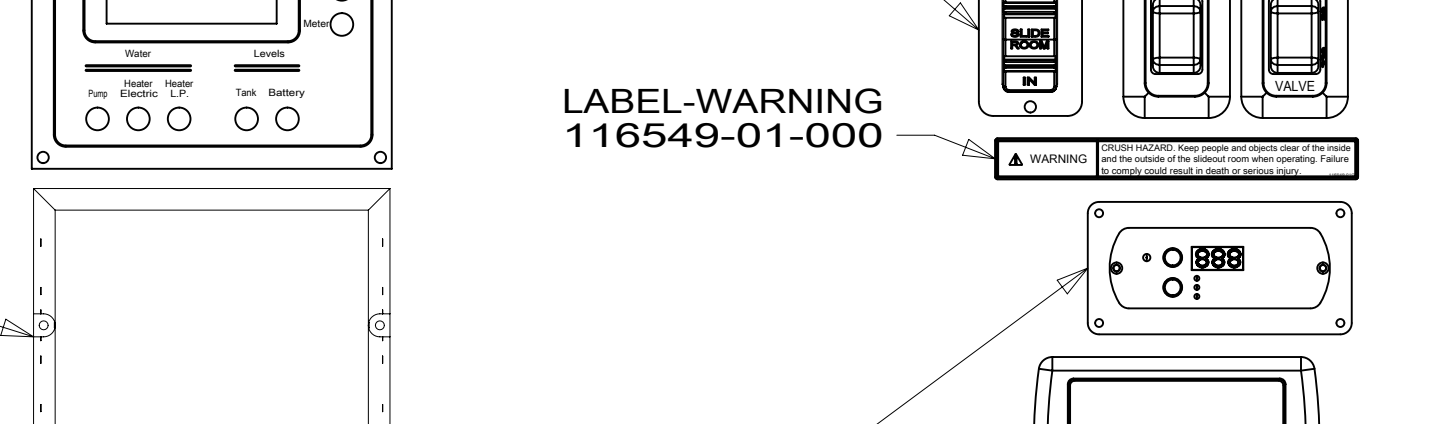
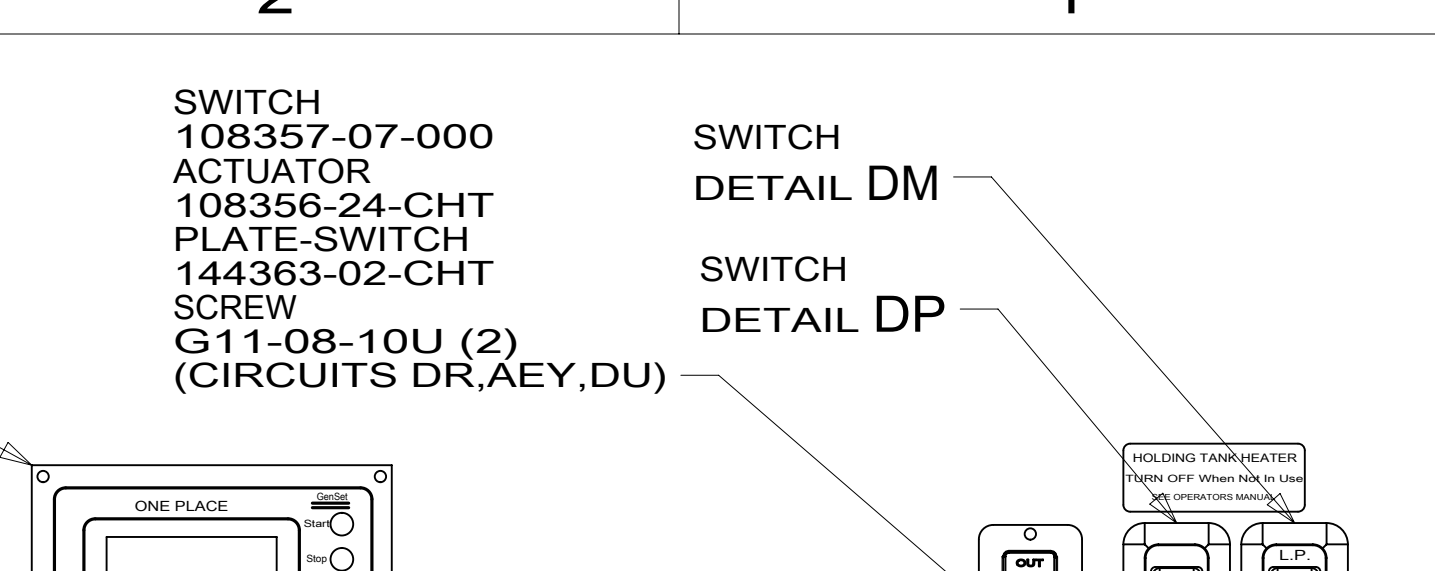
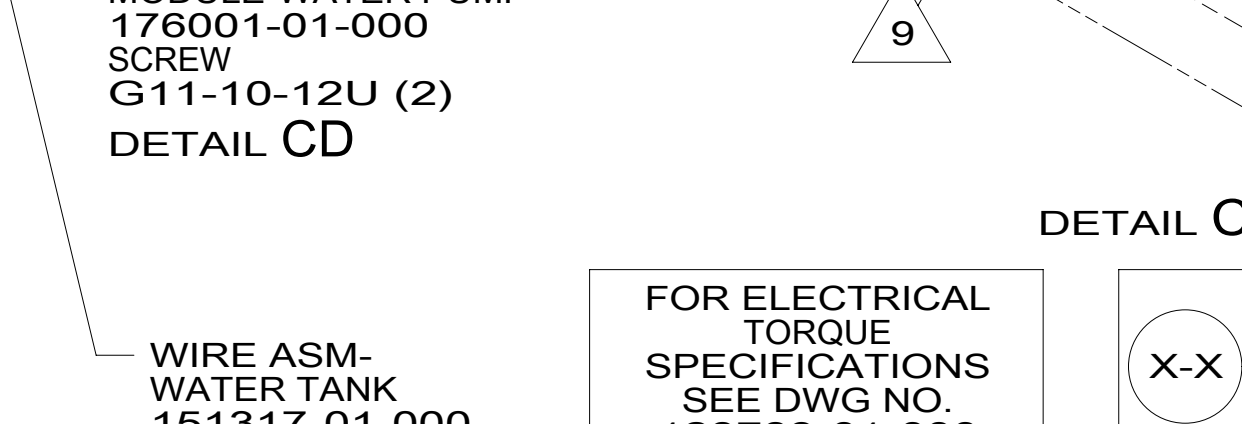
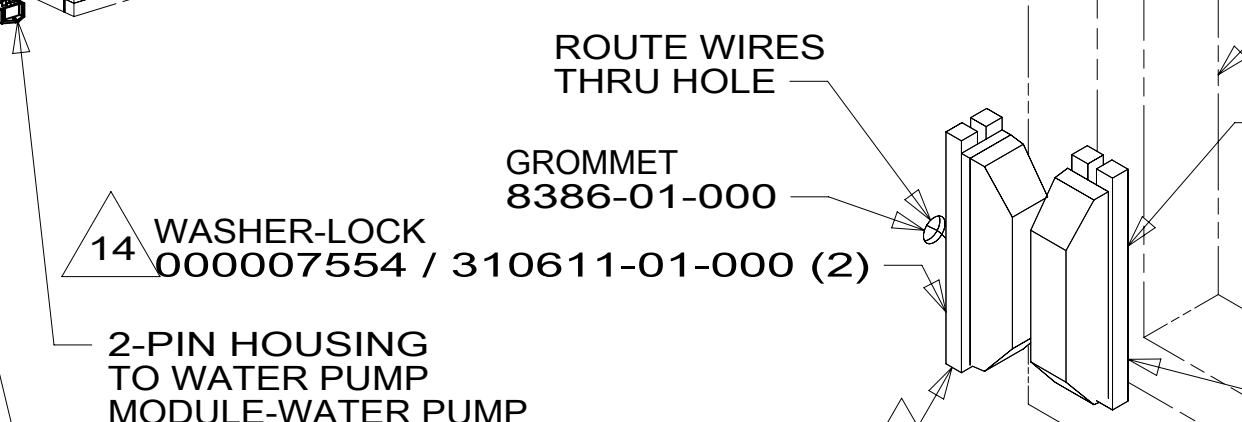
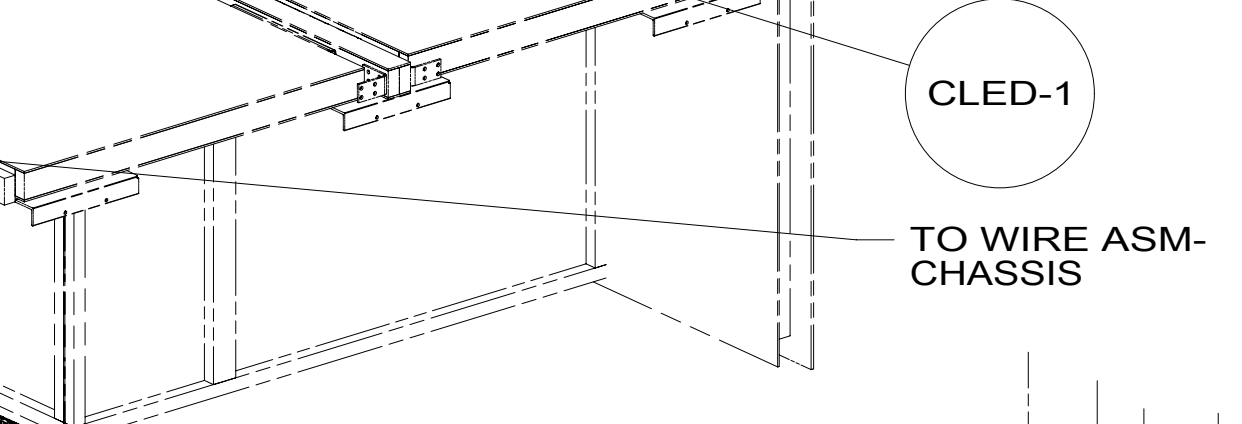
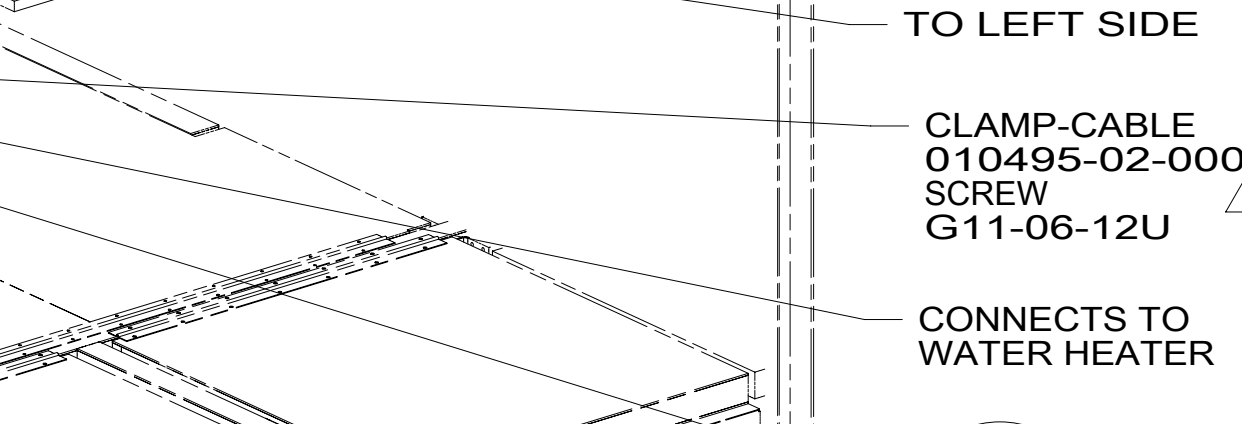
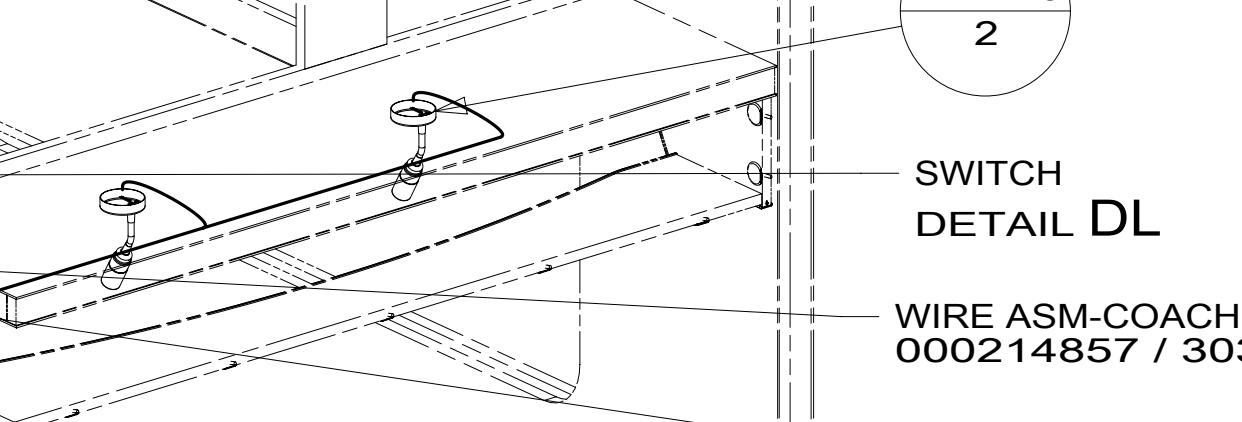
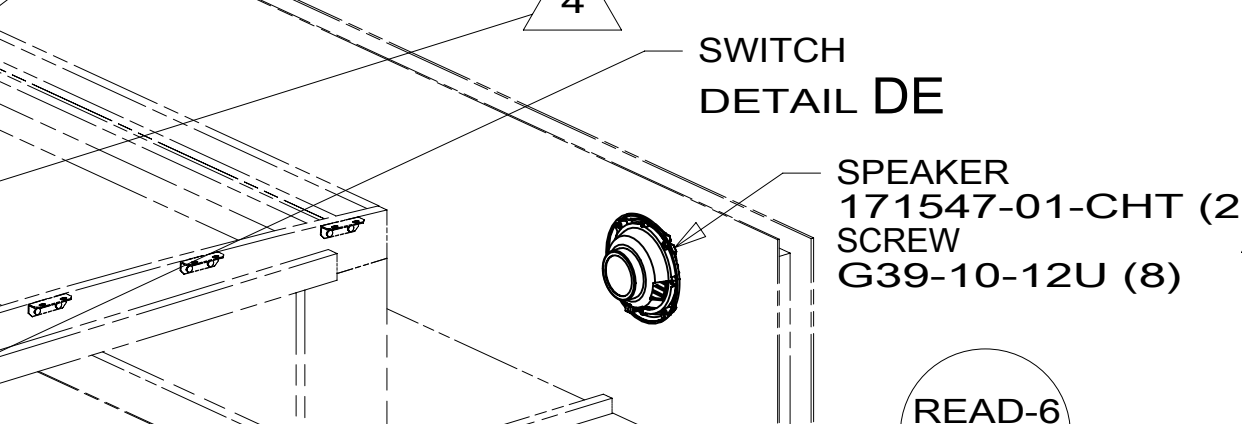
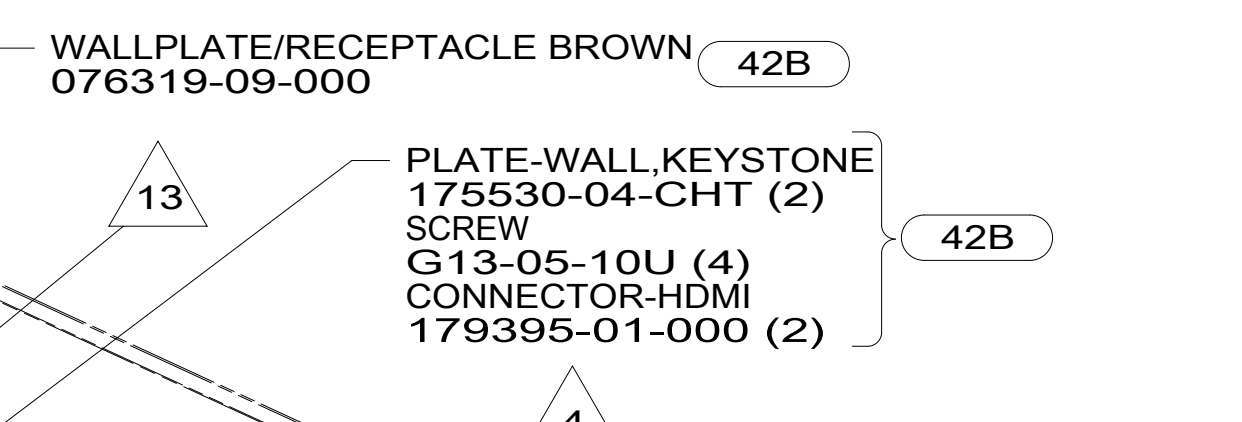
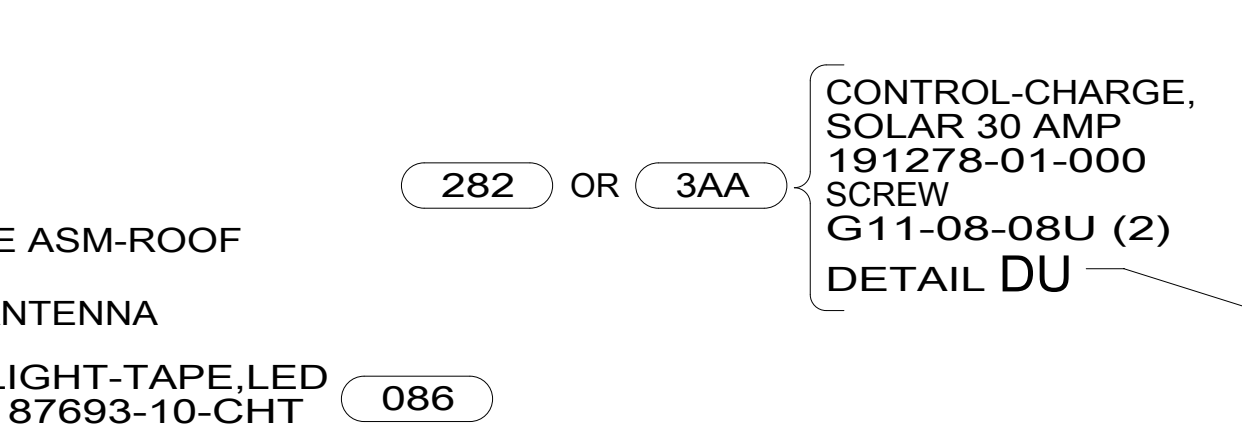
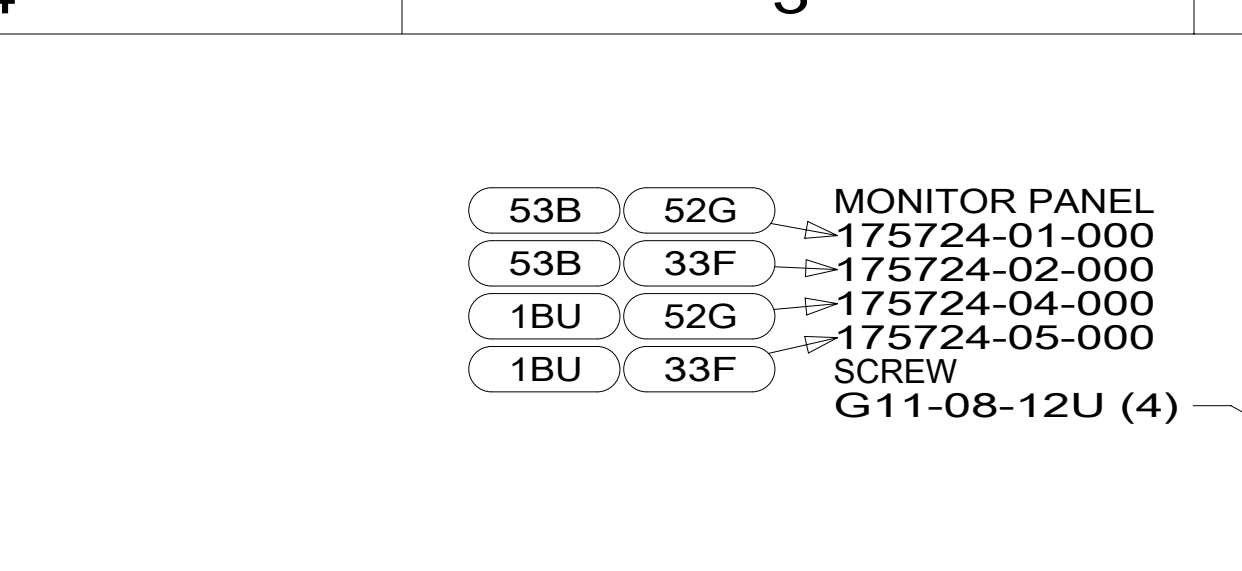
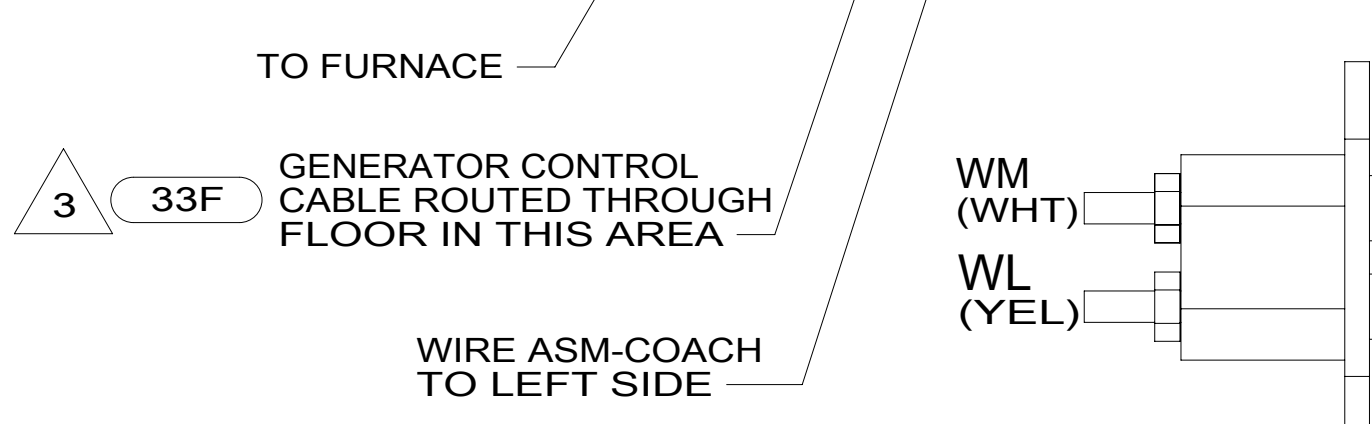
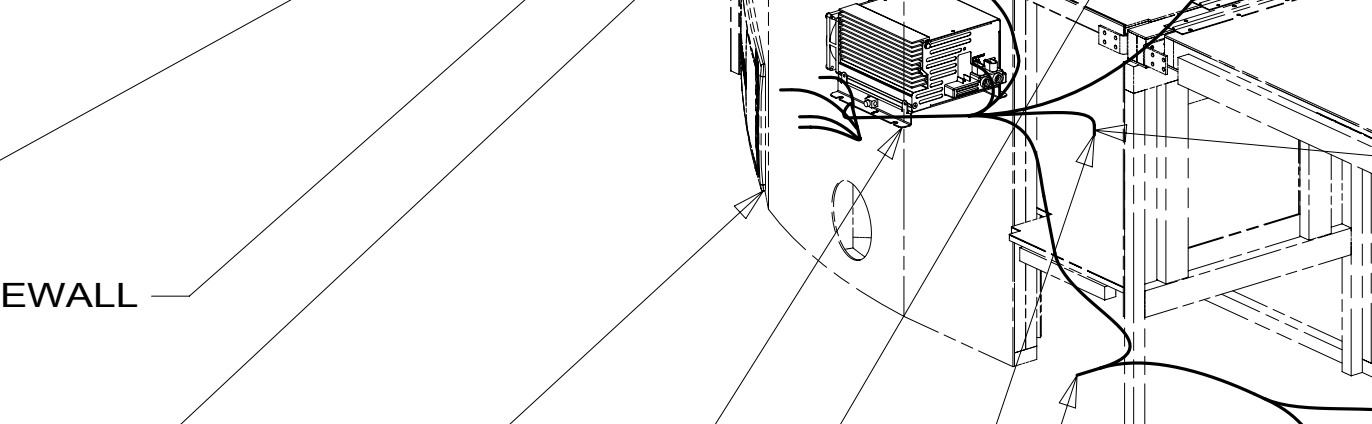
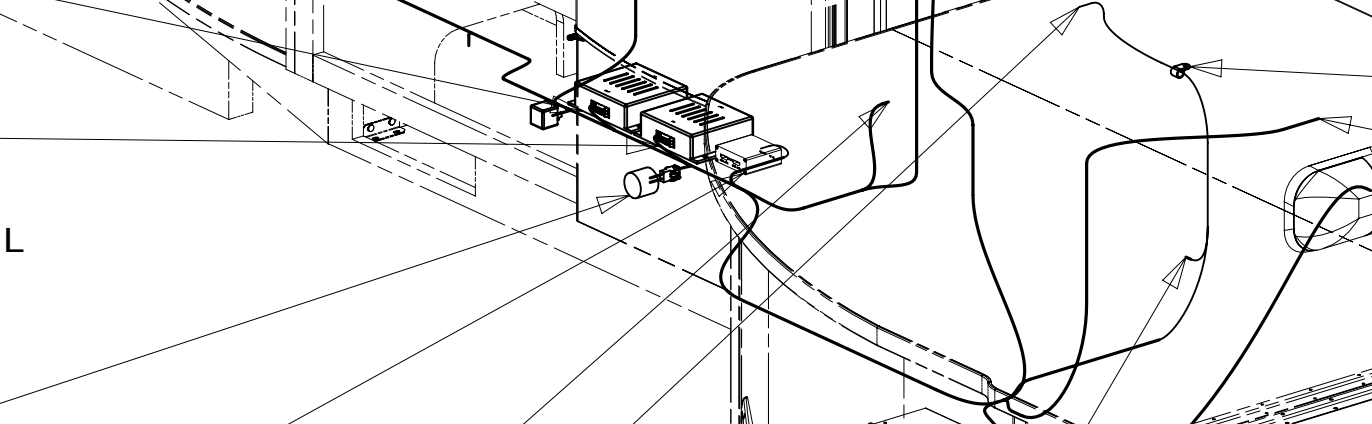
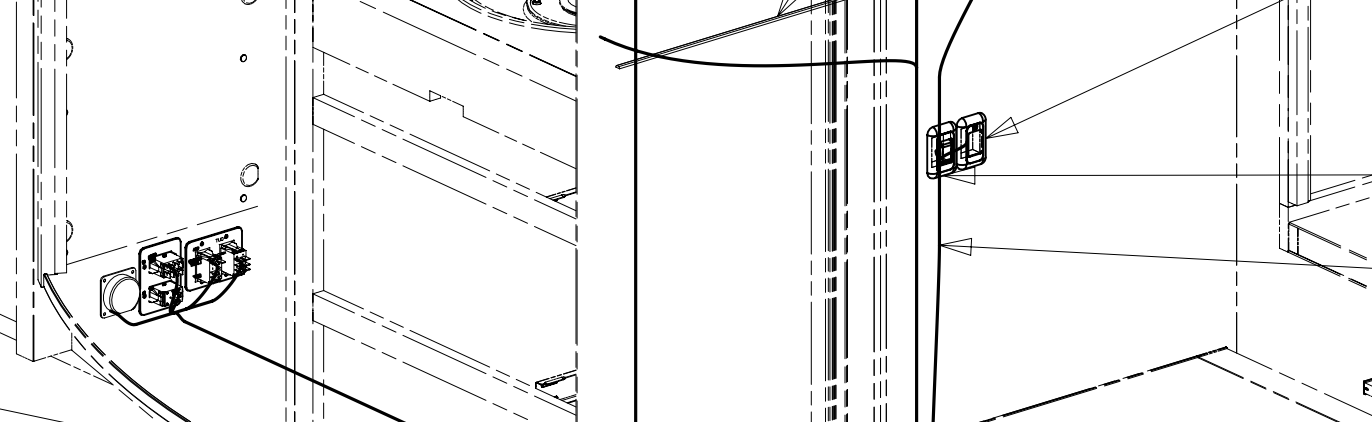
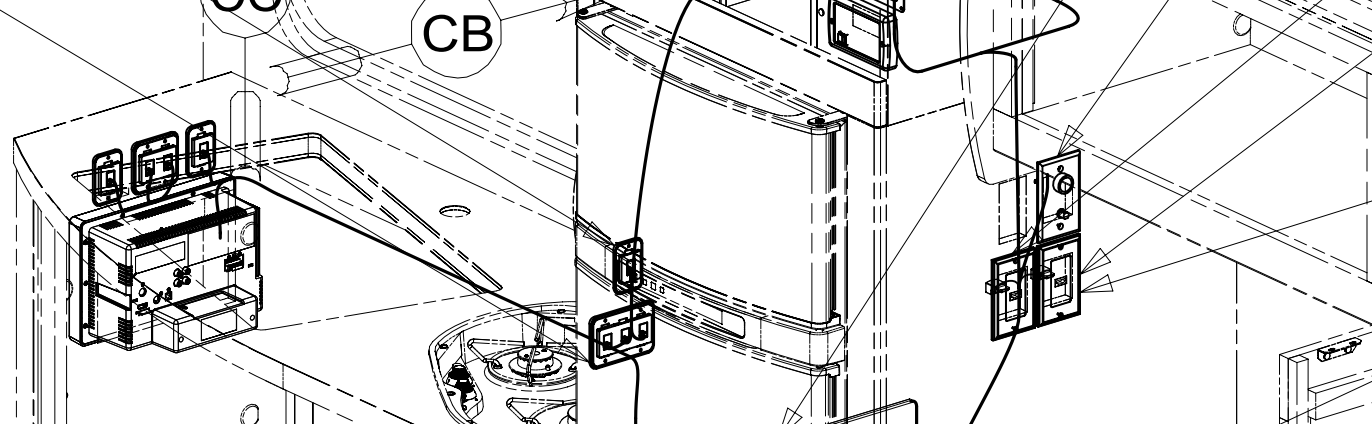
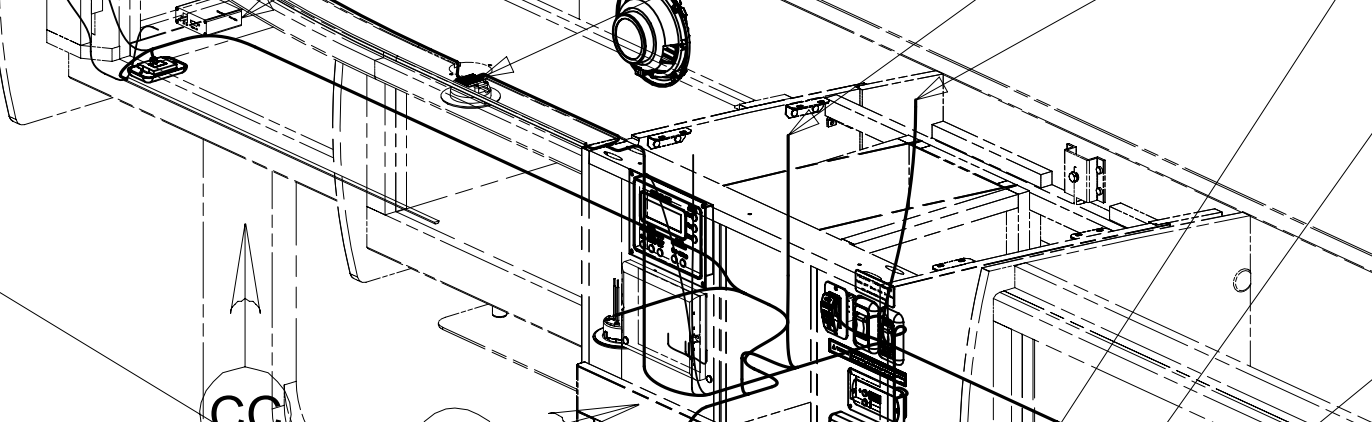
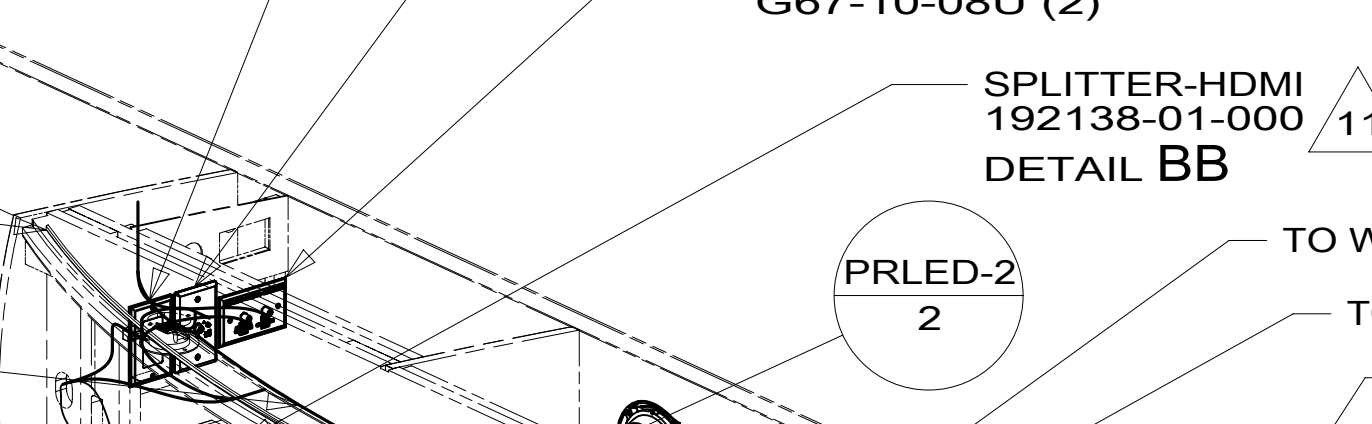
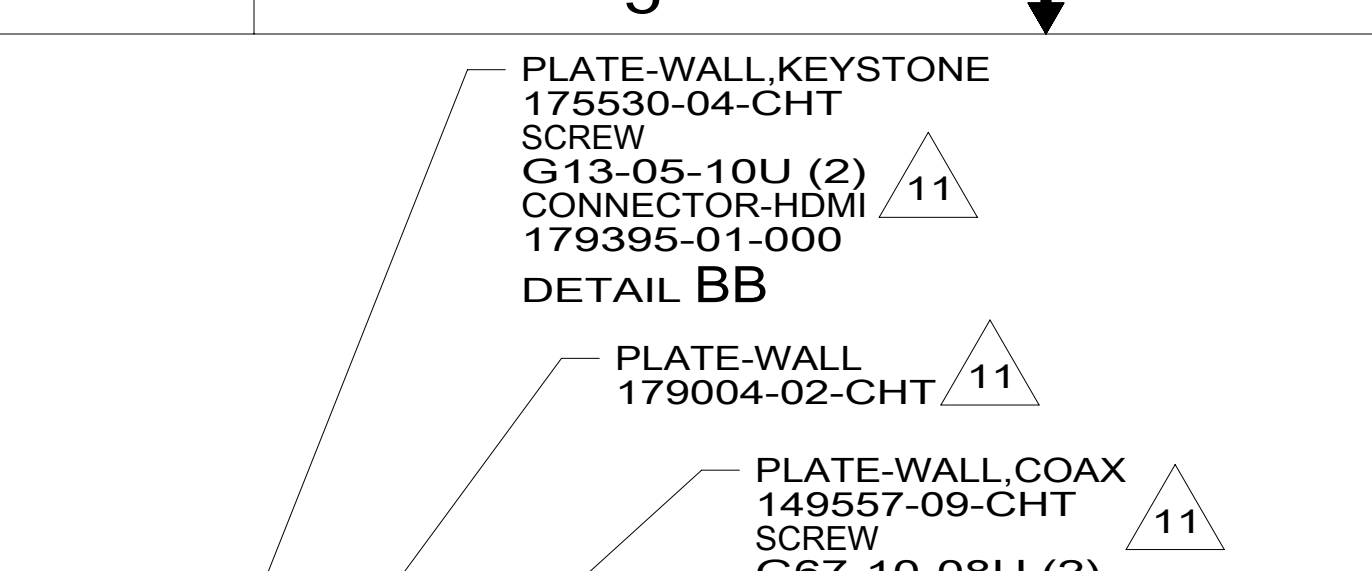
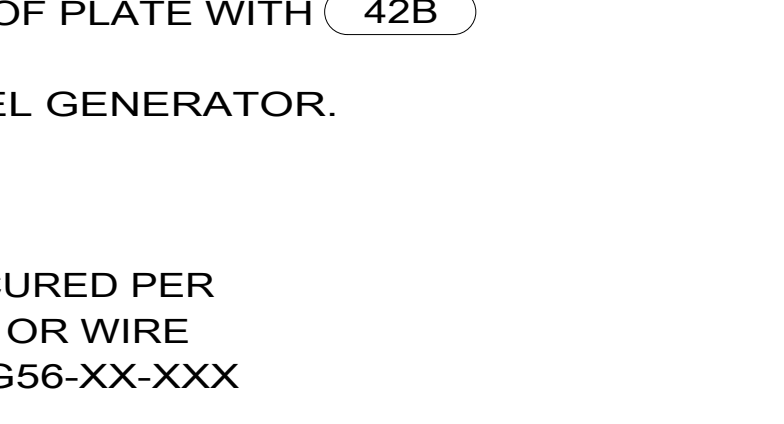
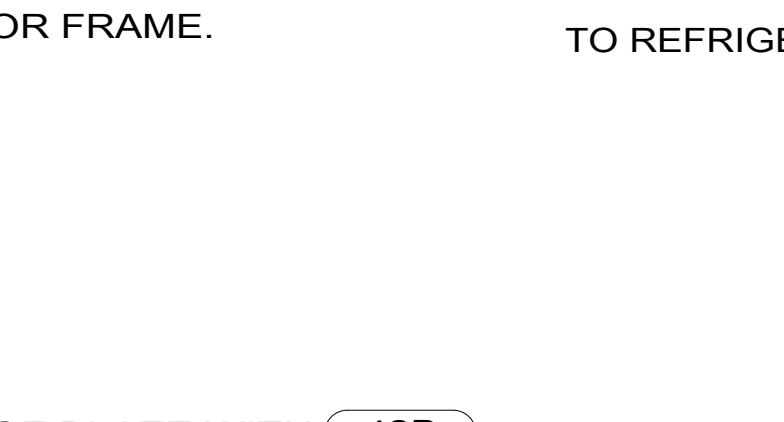
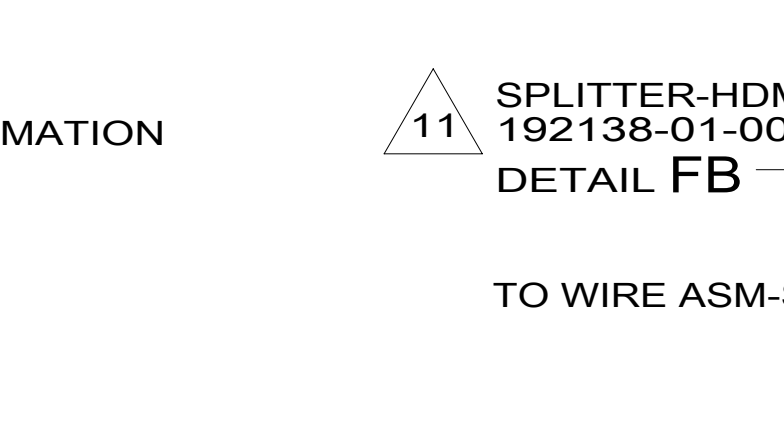
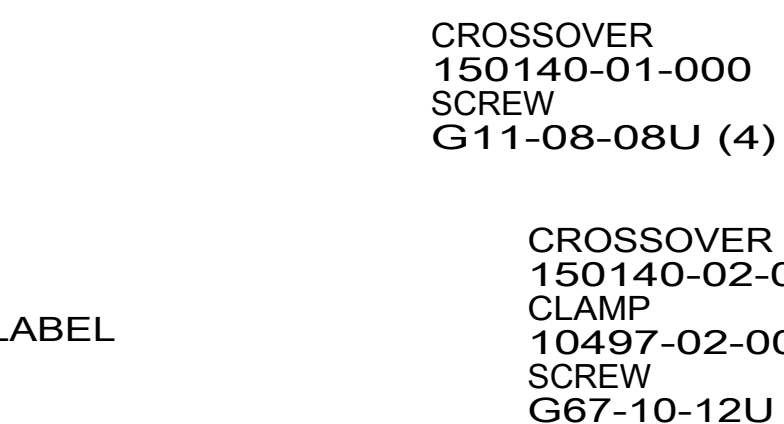
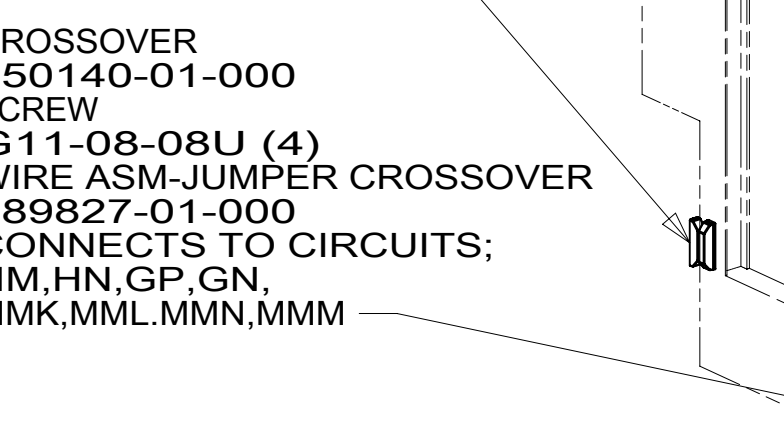
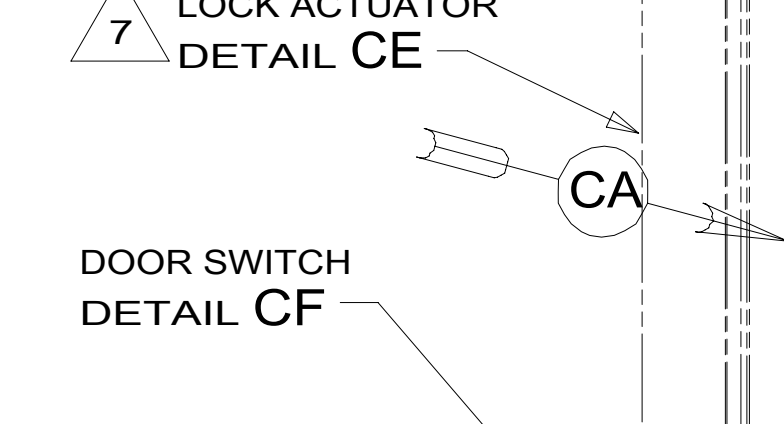
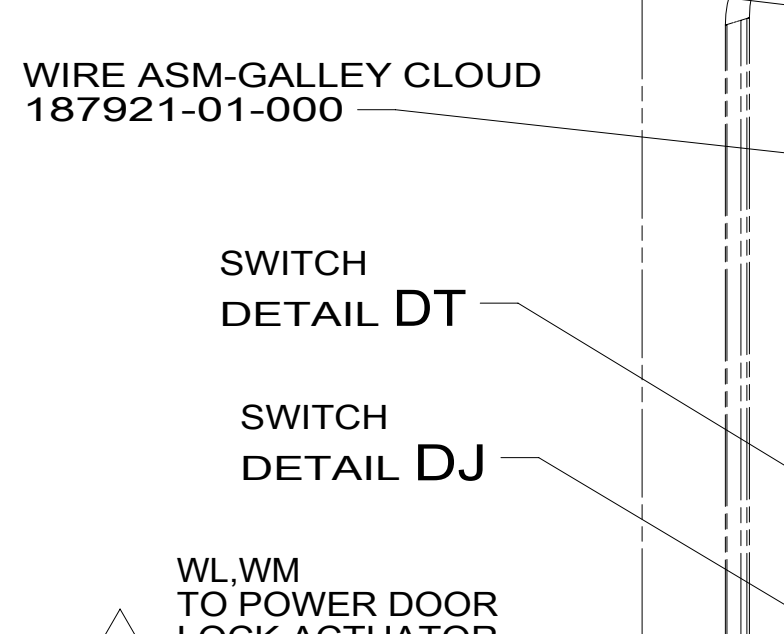
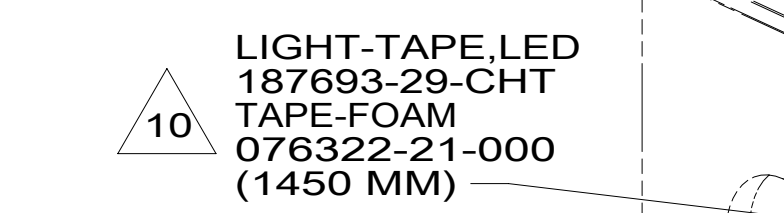
- 282 SOLAR PANEL - 100 WATT
- 29W SOLAR PANEL/BATTERY CHRG W/O
- 3AA SOLAR PANEL/BATT CHARGER SYS
- 23R DRAINAGE SYSTEM/HEAT-PREWIRE
- 23T DRAINAGE SYSTEM-HEATED
- 265 CODES/STANDARDS-CSA/CMVSS
- 1B1 CODES/STANDARDS USA

WINNEBAGO
COPYRIGHT 2016 WINNEBAGO INDUSTRIES, INC.

DSNR:	ALL DIMENSIONS ARE IN MILLIMETERS
DFFR:	
UNSPECIFIED TOLERANCES:	MATERIAL:
WHOLE DIM (X) : 3	
ONE-PLACE (X.X) : 1.5	
TWO-PLACE (X.XX) : 0.50	
ANGLE : 1°	
REFER TO ES0018 FOR FASTENER TIGHTENING GUIDELINES	WEIGHT: (LBS) FIRST USED: 16 524J
DESCRIPTION: WIRING INSTL-BODY, 12V	
SHEET: 1 OF 7	ITEM/PART NO.: 000177315 / 30087401000
REF:	1 05-Oct-2016



- NOTES:**
1. AT MINIMUM ALL WIRES TO BE SUPPORTED AND SECURED PER CODE REQUIREMENTS. USE CLAMP 10495 OR 10497 OR WIRE TIE 8343 OR 108046 AND SCREW G67-XX-XXX OR G56-XX-XXX AS APPROPRIATE FOR INSTALLATION.
 2. PANEL SUPPLIED WITH GENERATOR.
 3. WITH FEATURE 33FCABLE SUPPLIED WITH DIESEL GENERATOR.
 4. CONNECT CABLE-HDMI WITH TV 2 LABEL TO BACK OF PLATE WITH 42B
 5. MOUNTED ON THE EXTERIOR OF THE SIDEWALL.
 6. CENTER LIGHT STRIP IN OPENING.
 7. WIRES ARE PART OF WIRE ASM-SIDEWALL.
 8. MOUNT MAGNET USING PILOT HOLES IN SCREEN DOOR FRAME. MOUNT WITH MAGNET TOWARD SWITCH.
 9. MOUNT SWITCH AND SPACER TO BLOCK ON JAMB. ADJUST HEIGHT TO MATCH MAGNET.
 10. CLEAN SURFACE WITH CLEAN TOWEL.
 11. SEE WIRING INSTL-TV/DVD FOR ADDITIONAL INFORMATION
 12. CLAMP WIRES AWAY FROM FURNACE.
 13. CONNECT CABLE-HDMI WITH SATELLITE RECIEVER LABEL TO BACK OF PLATE WITH 42B
 14. REMOVE SCREW FROM MAGNET SWITCH TO INSTALL LOCK WASHER AND TERMINALS.

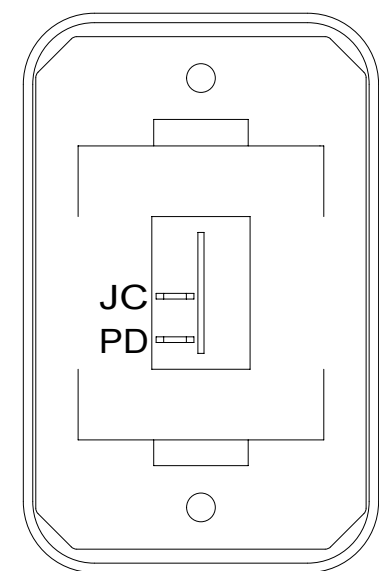


FOR ELECTRICAL TORQUE SPECIFICATIONS SEE DWG NO. 128783-01-000

FOR ELECTRICAL CALLOUTS SEE DWG NO. 121339-01-000

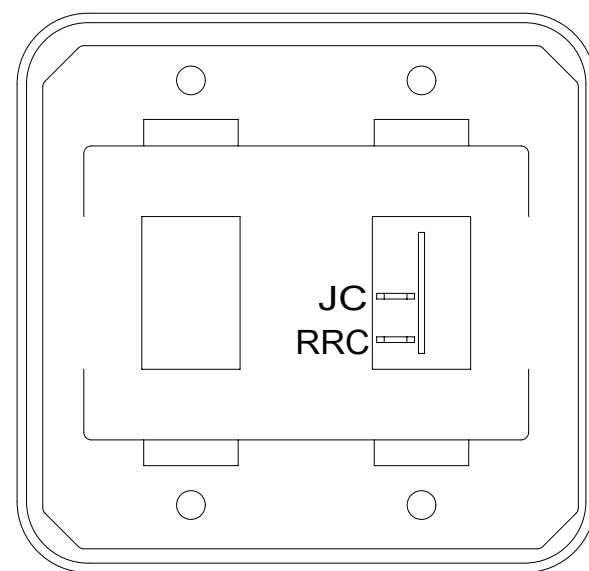
- 282 SOLAR PANEL - 100 WATT
- 42B TV,REAR-WITHOUT
- 53B WTR HTR-6GAL ELECTRIC/LP GAS
- 1BU WTR HTR TKLS W/RECIRCUL PUMP
- 3AA SOLAR PANEL/BATT CHARGER SYS
- 31T FRONT CAP W/ BED
- 31P FRONT CAP W/O BED
- 52G GEN-3.6KW ONAN LP MICROQUIET
- 086 INTERIOR UPGRADE PACKAGE
- 33F GEN-3.5 KW ONAN DIESEL
- 265 CODES/STANDARDS-CSA/CMVSS
- 1B1 CODES/STANDARDS USA

DESCRIPTION: **WIRING INSTL-BODY, 12V**
 SHEET: 3 OF 7 ITEM/PART NO: 000177315 / 30087401000 REV



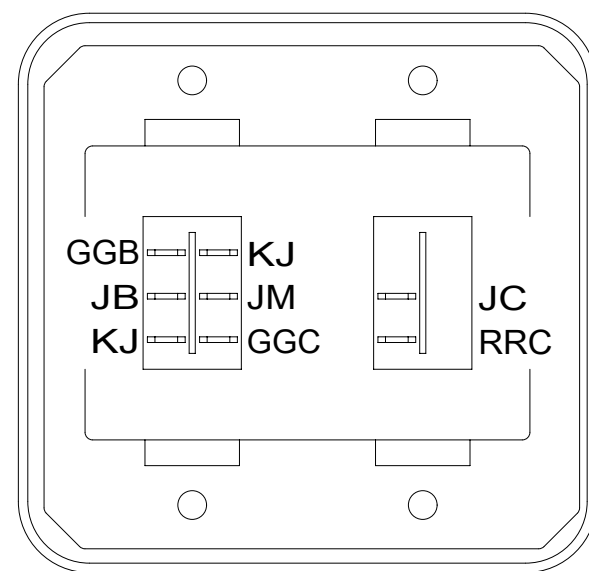
SWITCH-ROCKER
135740-01-CHT
SWITCH-BASE
135741-01-CHT
SWITCH-BEZEL
135742-01-CHT
SCREW
G11-08-08U (2)

DETAIL DA



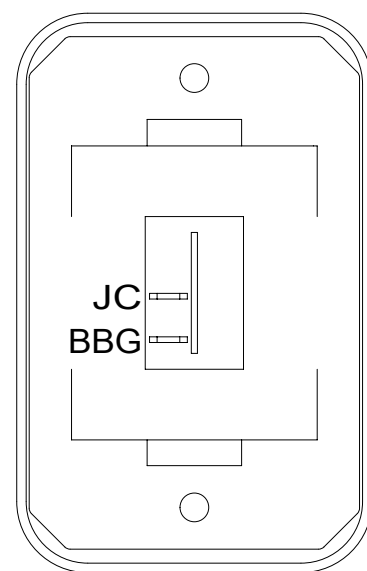
SWITCH-ROCKER
135740-01-CHT
SWITCH-BLANK
138253-01-CHT
SWITCH-BASE
135741-01-CHT
SWITCH-BEZEL
135742-01-CHT
SCREW
G11-06-16U (4)

DETAIL DF 41M



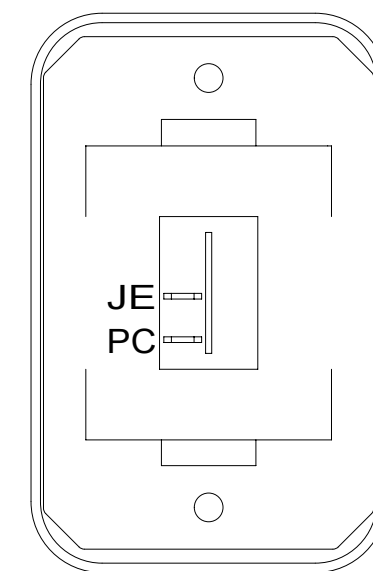
SWITCH-ROCKER
135740-01-CHT
135740-03-CHT
SWITCH-BASE
135741-02-CHT
SWITCH-BEZEL
135742-02-CHT
SCREW
G11-06-16U (4)

DETAIL DF 316



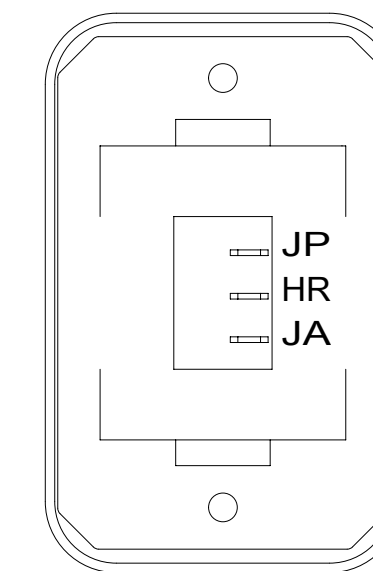
SWITCH-ROCKER
135740-01-CHT
SWITCH-BASE
135741-01-CHT
SWITCH-BEZEL
135742-01-CHT
SCREW
G11-08-08U (2)

DETAIL DK



SWITCH-ROCKER
135740-01-CHT
SWITCH-BASE
135741-01-CHT
SWITCH-BEZEL
135742-01-CHT
SCREW
G11-08-08U (2)

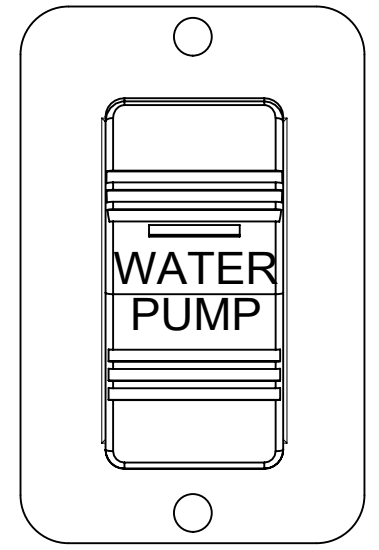
DETAIL DL



SWITCH-BLANK
138253-01-CHT
SWITCH-ROCKER
135740-06-CHT
SWITCH-BASE
135741-01-CHT
SWITCH-BEZEL
135742-01-CHT
SCREW
G11-08-08U (2)
LABEL-SWITCH
134563-01-CHT

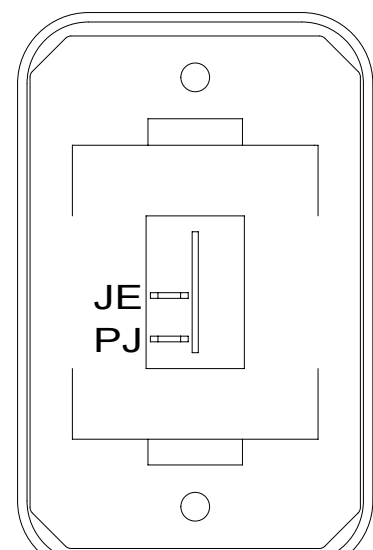
HOLDING TANK HEATER
TURN OFF When Not In Use
SEE OPERATORS MANUAL

DETAIL DP



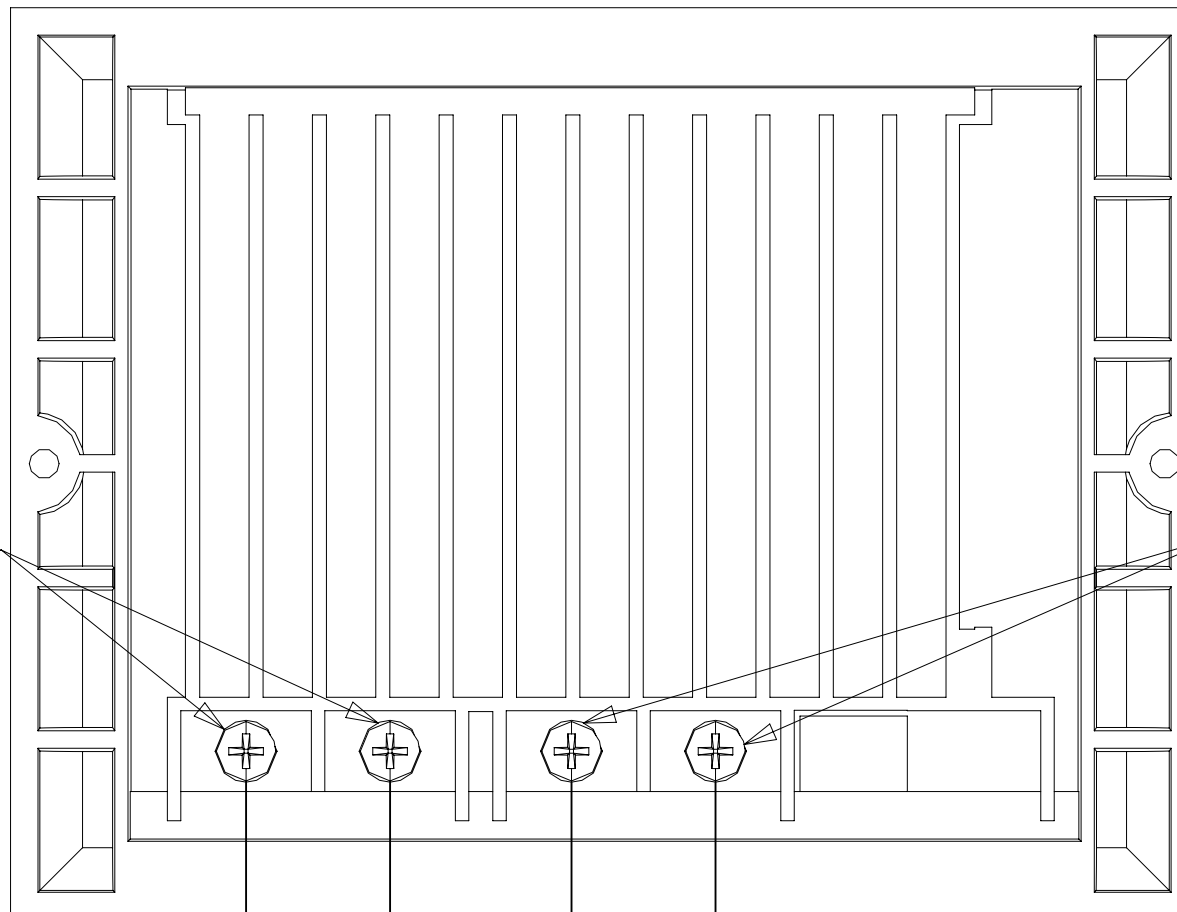
SWITCH-WATER PUMP
108357-21-000
ACTUATOR
108356-23-CHT
PLATE
144363-02-CHT
SCREW
G11-06-10U (2)

DETAIL DB



SWITCH-ROCKER
135740-01-CHT
SWITCH-BASE
135741-01-CHT
SWITCH-BEZEL
135742-01-CHT
SCREW
G11-08-08U (2)

DETAIL DG



BATTERY CONNECTION

SOLAR PANEL CONNECTION

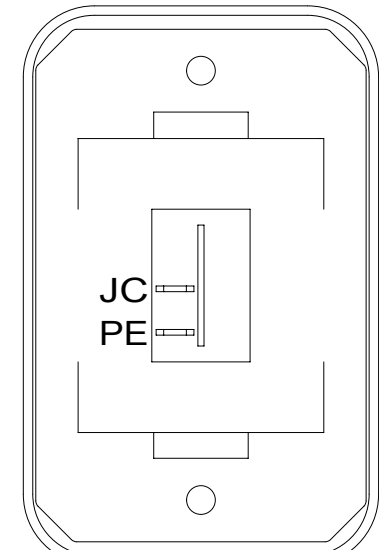
4 8 BLK
4 8 GRN

8 BLK & 10 YEL 5
8 GRN & 10 WHT 5

WIRE ASM-COACH

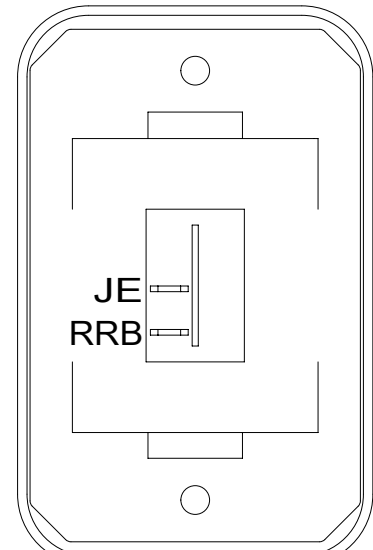
WIRE ASM-COACH

DETAIL DU 3AA OR 282



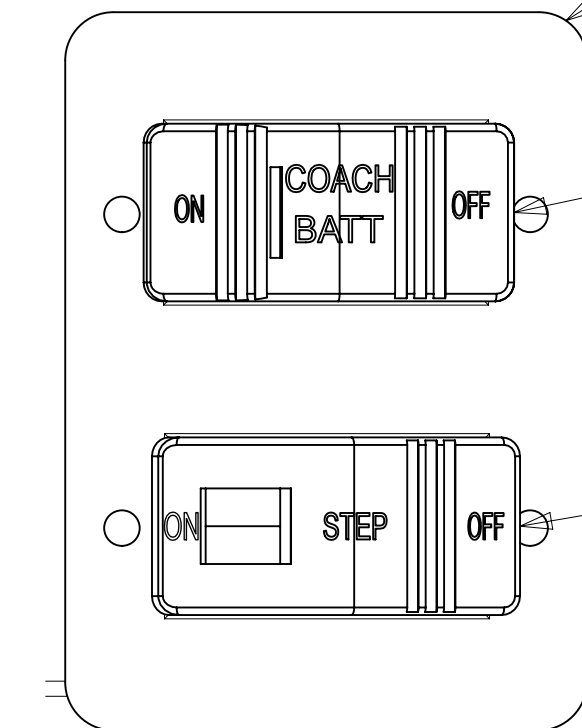
SWITCH-ROCKER
135740-01-CHT
SWITCH-BASE
135741-01-CHT
SWITCH-BEZEL
135742-01-CHT
SCREW
G11-08-08U (2)

DETAIL DC



SWITCH-ROCKER
135740-01-CHT
SWITCH-BASE
135741-01-CHT
SWITCH-BEZEL
135742-01-CHT
SCREW
G11-08-08U (2)

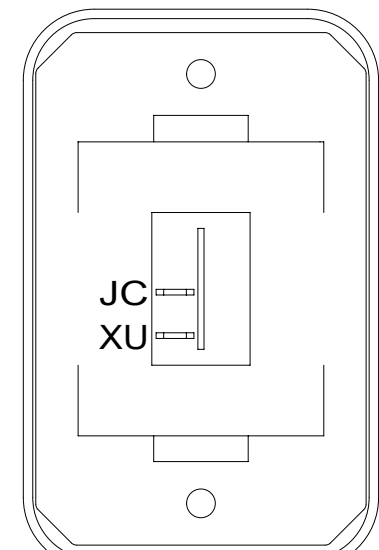
DETAIL DH



DETAIL DR

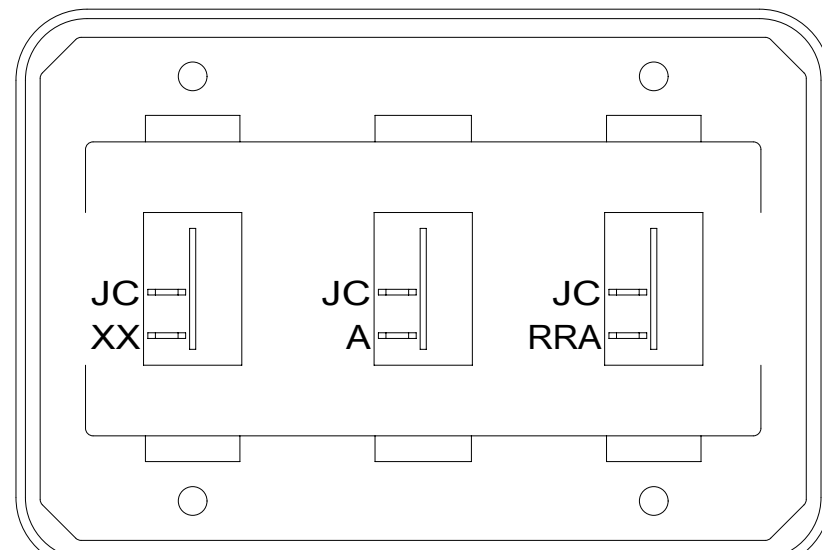
PLATE-SWITCH
158431-17-CHT
SCREW
G11-06-10U (4)
SWITCH-BATT DISC
108357-18-000
ACTUATOR-BATT DISC
108356-19-CHT
WIRE ASM-THERM
186796-01-000

SWITCH-STEP
108357-19-000



SWITCH-ROCKER
135740-01-CHT
SWITCH-BASE
135741-01-CHT
SWITCH-BEZEL
135742-01-CHT
SCREW
G11-08-08U (2)

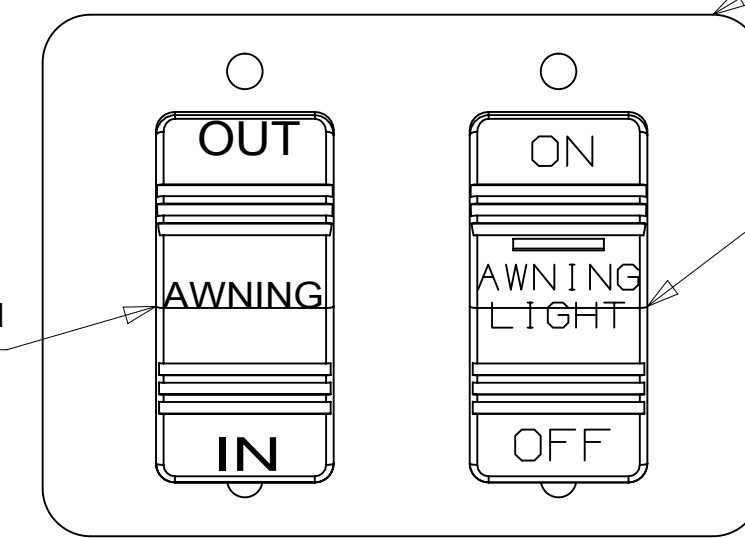
DETAIL DD



SWITCH-ROCKER
135740-01-CHT (3)
SWITCH-BASE
135741-03-CHT
SWITCH-BEZEL
135742-03-CHT
SCREW
G11-08-08U (4)

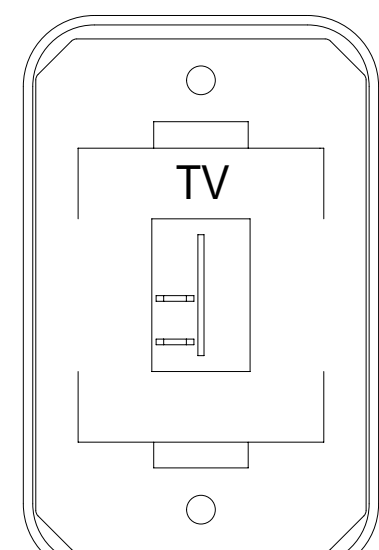
DETAIL DJ

SWITCH-ROCKER
108357-06-000
ACTUATOR-SWITCH
108356-12-CHT



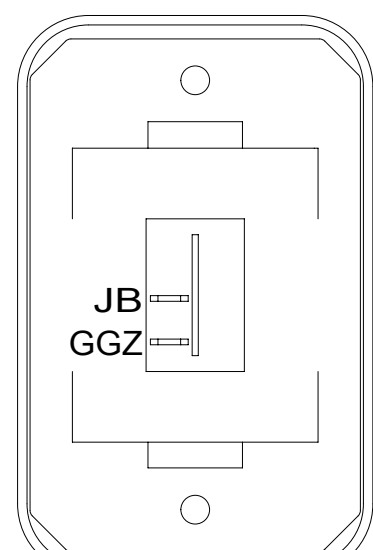
DETAIL DS

PLATE-SWITCH
158431-17-CHT
SCREW
G11-06-10U (4)
SWITCH-ROCKER
108357-14-000
ACTUATOR-SWITCH
108356-28-CHT



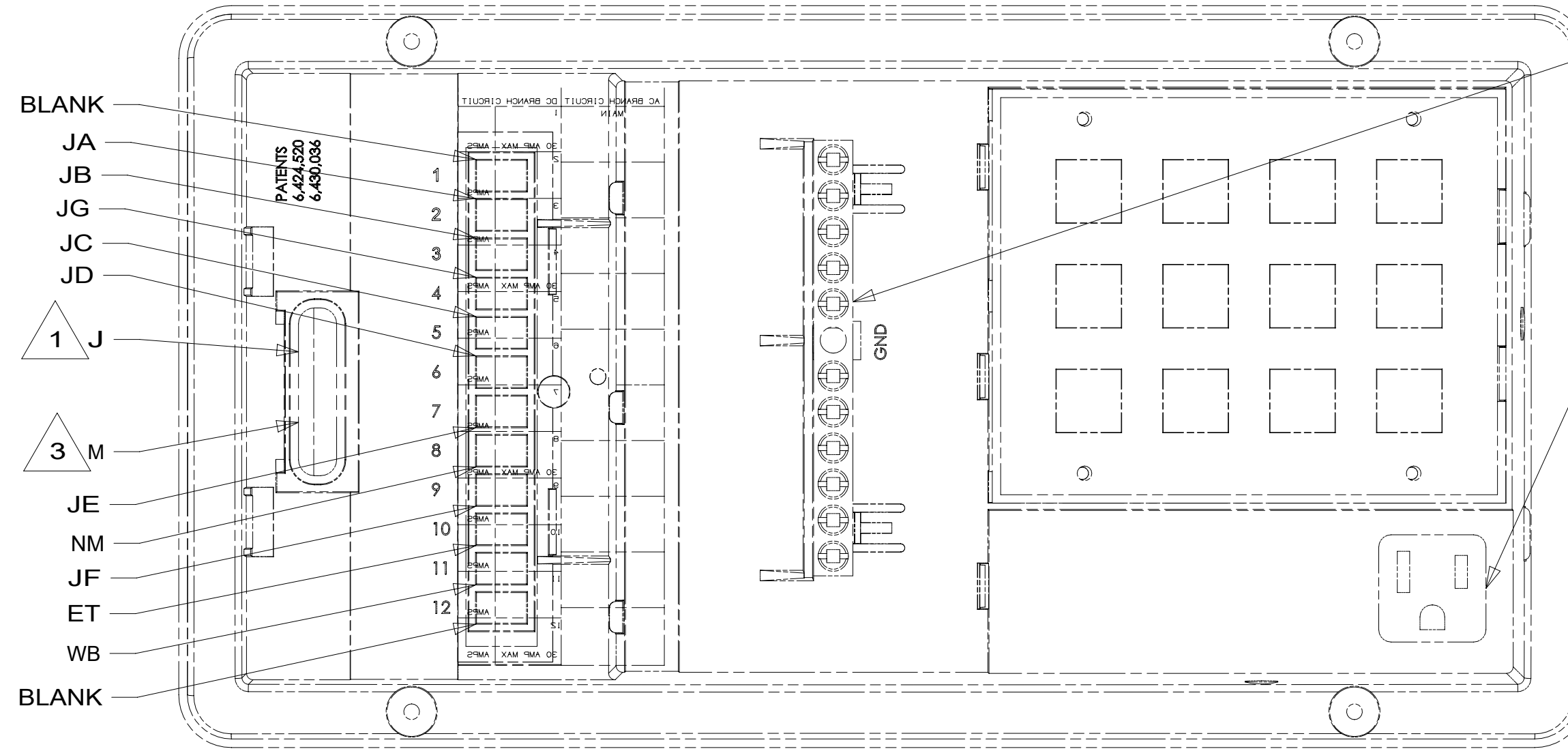
SWITCH-BLANK
138253-01-CHT
SWITCH-BASE
135741-01-CHT
SWITCH-BEZEL
135742-45-CHT
SCREW
G11-08-08U (2)

DETAIL DE



SWITCH-ROCKER
135740-01-CHT
SWITCH-BASE
135741-01-CHT
SWITCH-BEZEL
135742-01-CHT
SCREW
G11-08-08U (2)

DETAIL DT



GROUND BAR
CIRCUITS:
NC, JX, FFE, JM,
MS, JY, ND, NF,
NE, JP, PM, UK

PLUG CONVERTER
POWER CORD
INTO CONVICENCE
RECPTACLE

- 282 SOLAR PANEL - 100 WATT
- 3AA SOLAR PANEL/BATT CHARGER SYS
- 41M VENT-POWER VENTILATOR
- 316 SKYLIGHT/ROOF VENT, POWER
- 1JD DRAINAGE SYSTEM-HEATED-W/O
- 23R DRAINAGE SYSTEM/HEAT-PREWIRED
- 23T DRAINAGE SYSTEM-HEATED
- 265 CODES/STANDARDS-CSA/CMVSS
- 1B1 CODES/STANDARDS USA

FOR ELECTRICAL
TORQUE
SPECIFICATIONS
SEE DWG NO.
128783-01-000

FOR ELECTRICAL
CALLOUTS
SEE DWG NO.
121339-01-000

1B1 265

DESCRIPTION:
WIRING INSTL-BODY, 12V

SHEET: 4 OF 7 ITEM/PART NO.: 000177315 / 30087401000 REV

- NOTES:
- 5 WIRE IS MARKED WITH YELLOW TAPE.
 - 4 WIRE IS MARKED WITH GOLD TAPE.
 - 3 CIRCUIT FROM WIRE ASM-COACH.
 - 2 FOR REFERENCE ONLY. SEE LOAD CENTER/ATS ASM FOR ADDITIONAL INFORMATION.
 - 1 CIRCUIT FROM WIRE ASM-CHASSIS.

8 7 6 5 4 3 2 1

D

C

B

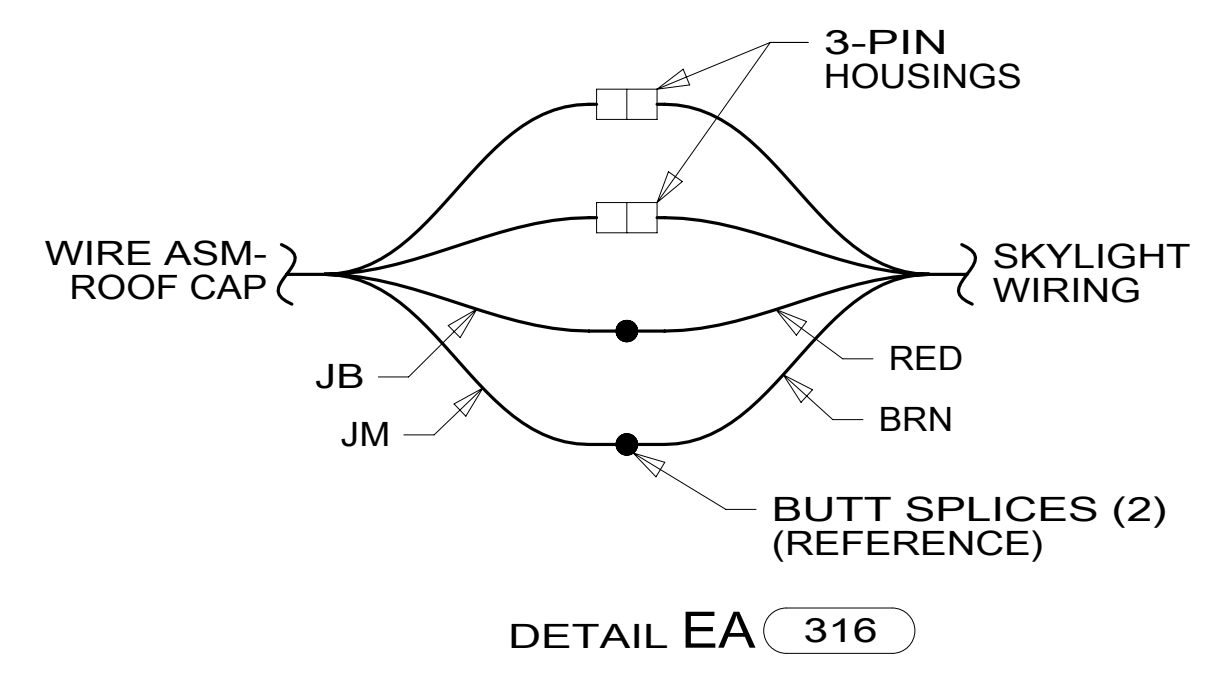
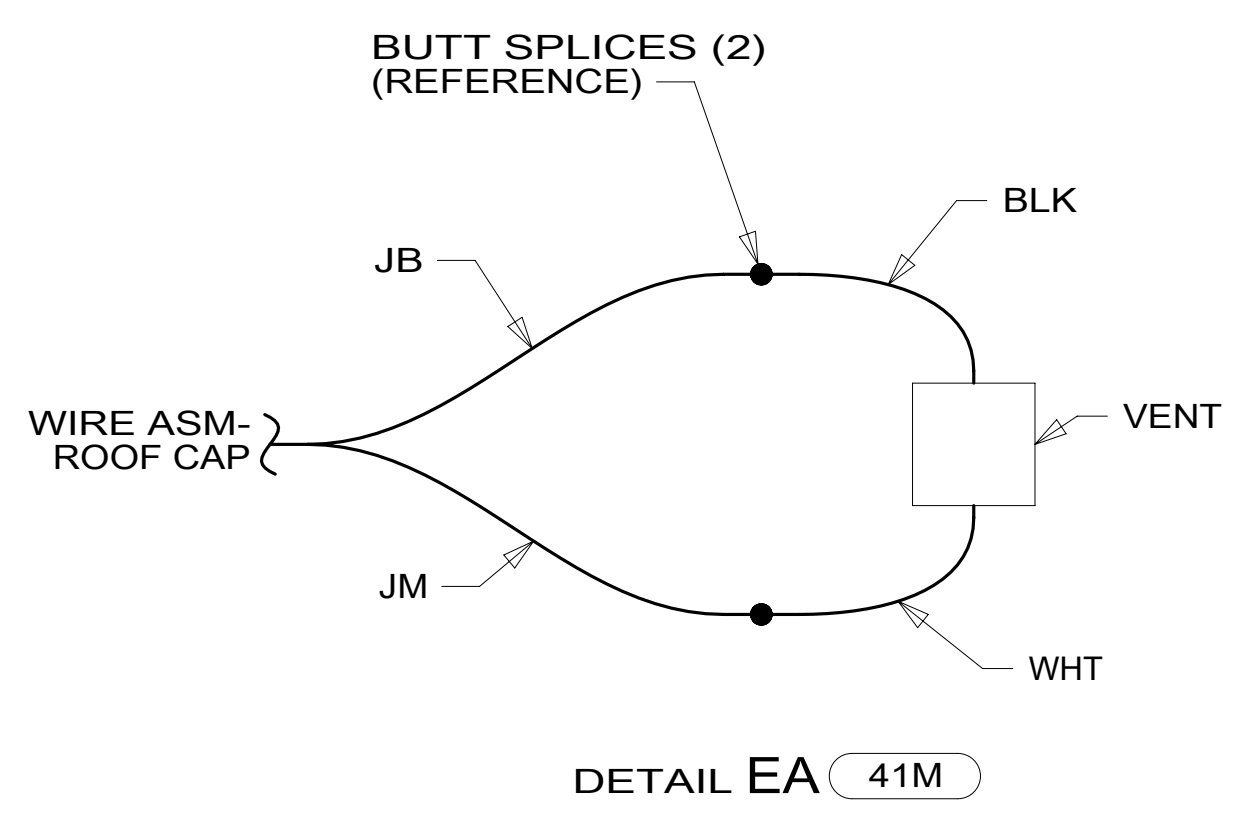
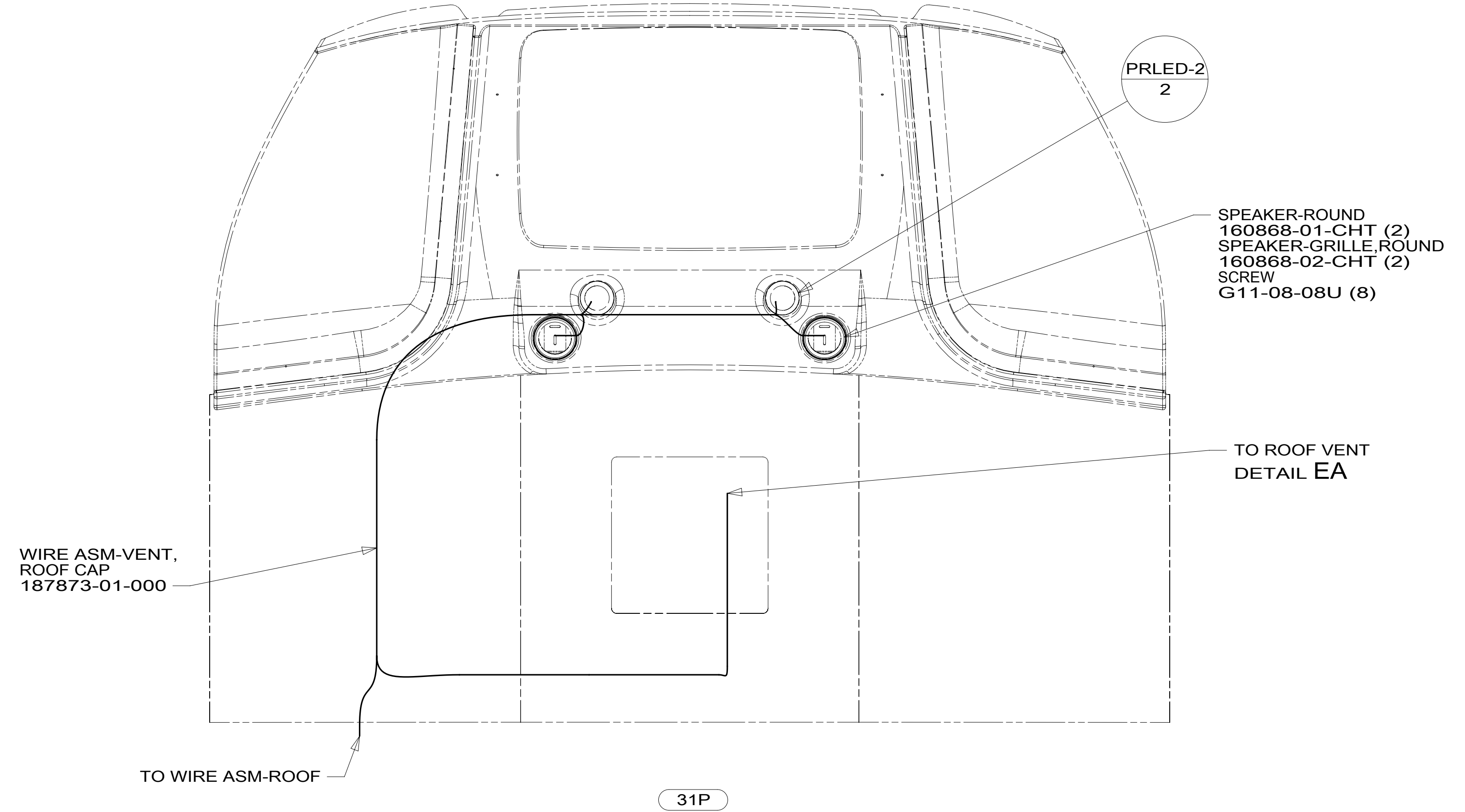
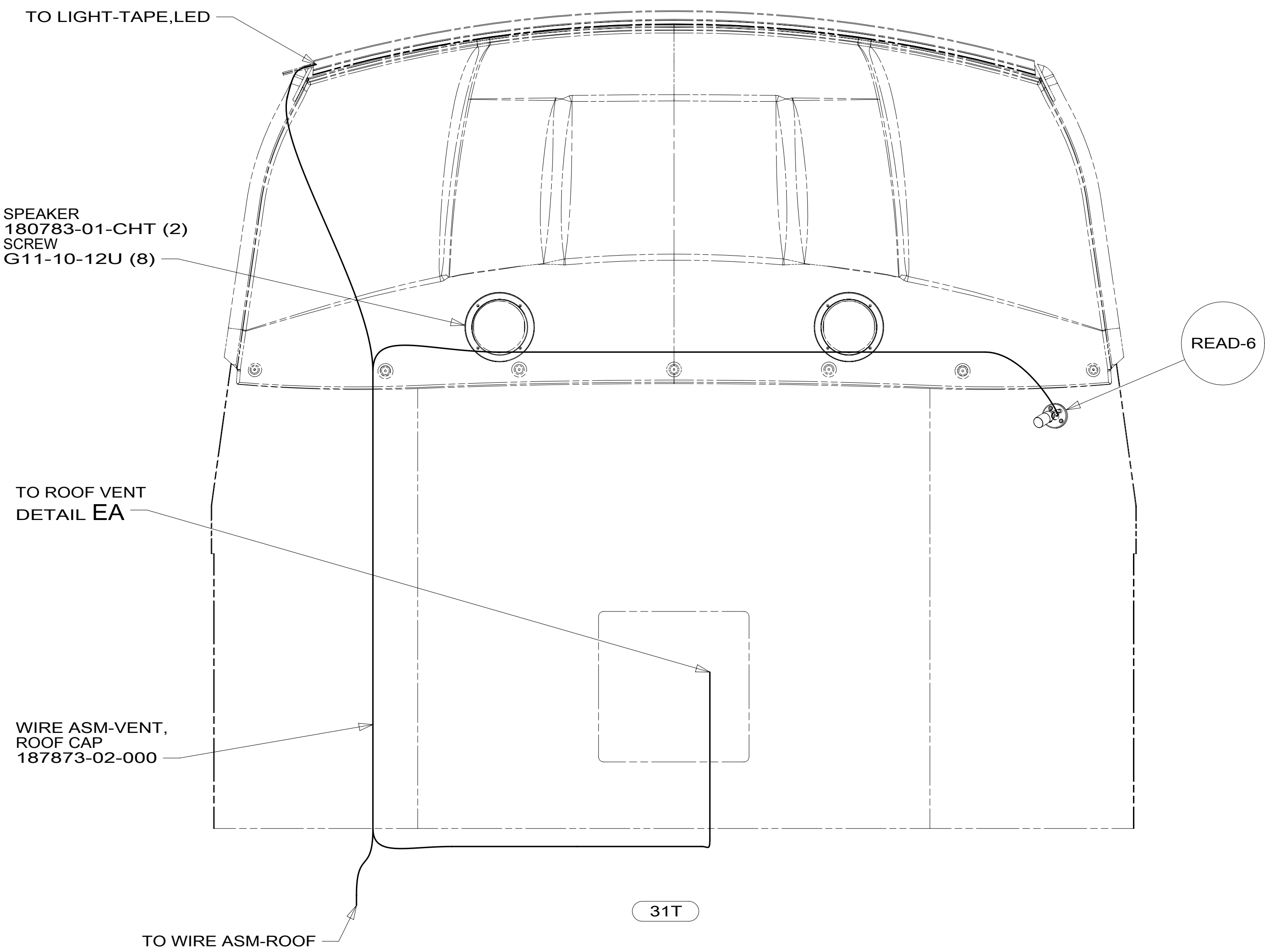
A

D

C

B

A



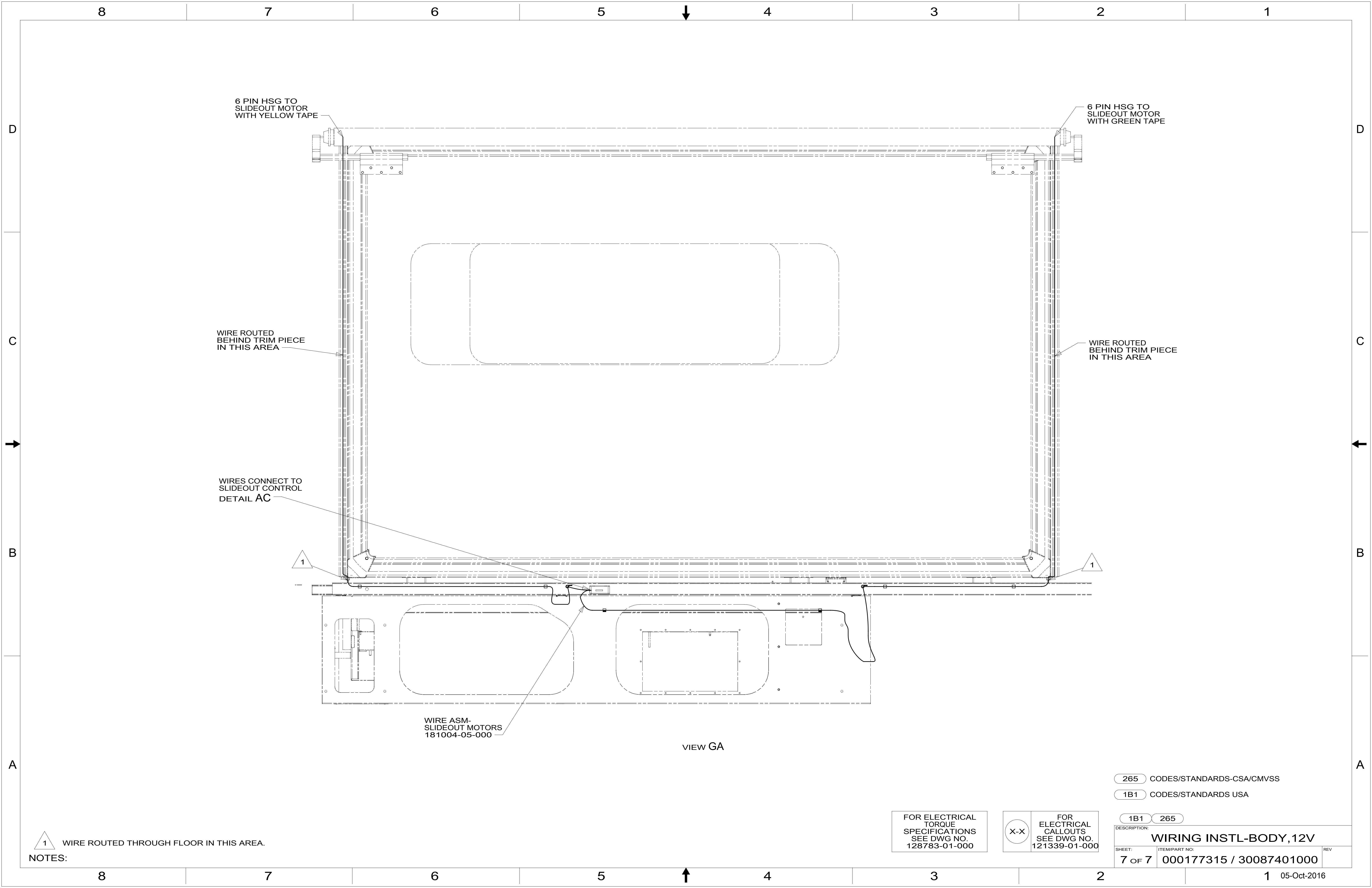
- 31P FRONT CAP W/O BED
- 31T FRONT CAP W/BED
- 316 SKYLIGHT/ROOF VENT, POWER
- 41M VENT-POWER VENTILATOR
- 265 CODES/STANDARDS-CSA/CMVSS
- 1B1 CODES/STANDARDS USA

FOR ELECTRICAL
TORQUE
SPECIFICATIONS
SEE DWG NO.
128783-01-000

FOR
ELECTRICAL
CALLOUTS
SEE DWG NO.
121339-01-000

DESCRIPTION:		1B1 265	
WIRING INSTL-BODY, 12V			
SHEET:	ITEM/PART NO.:	REV	
5 OF 7	000177315 / 30087401000		

8 7 6 5 4 3 2 1 05-Oct-2016



6 PIN HSG TO SLIDEOUT MOTOR WITH YELLOW TAPE

6 PIN HSG TO SLIDEOUT MOTOR WITH GREEN TAPE

WIRE ROUTED BEHIND TRIM PIECE IN THIS AREA

WIRE ROUTED BEHIND TRIM PIECE IN THIS AREA

WIRES CONNECT TO SLIDEOUT CONTROL DETAIL AC

WIRE ASM- SLIDEOUT MOTORS 181004-05-000

VIEW GA

1 WIRE ROUTED THROUGH FLOOR IN THIS AREA.

NOTES:

FOR ELECTRICAL TORQUE SPECIFICATIONS SEE DWG NO. 128783-01-000

FOR ELECTRICAL CALLOUTS SEE DWG NO. 121339-01-000

- 265 CODES/STANDARDS-CSA/CMVSS
- 1B1 CODES/STANDARDS USA

DESCRIPTION:	
WIRING INSTL-BODY, 12V	
SHEET:	ITEM/PART NO. REV
7 OF 7	000177315 / 30087401000