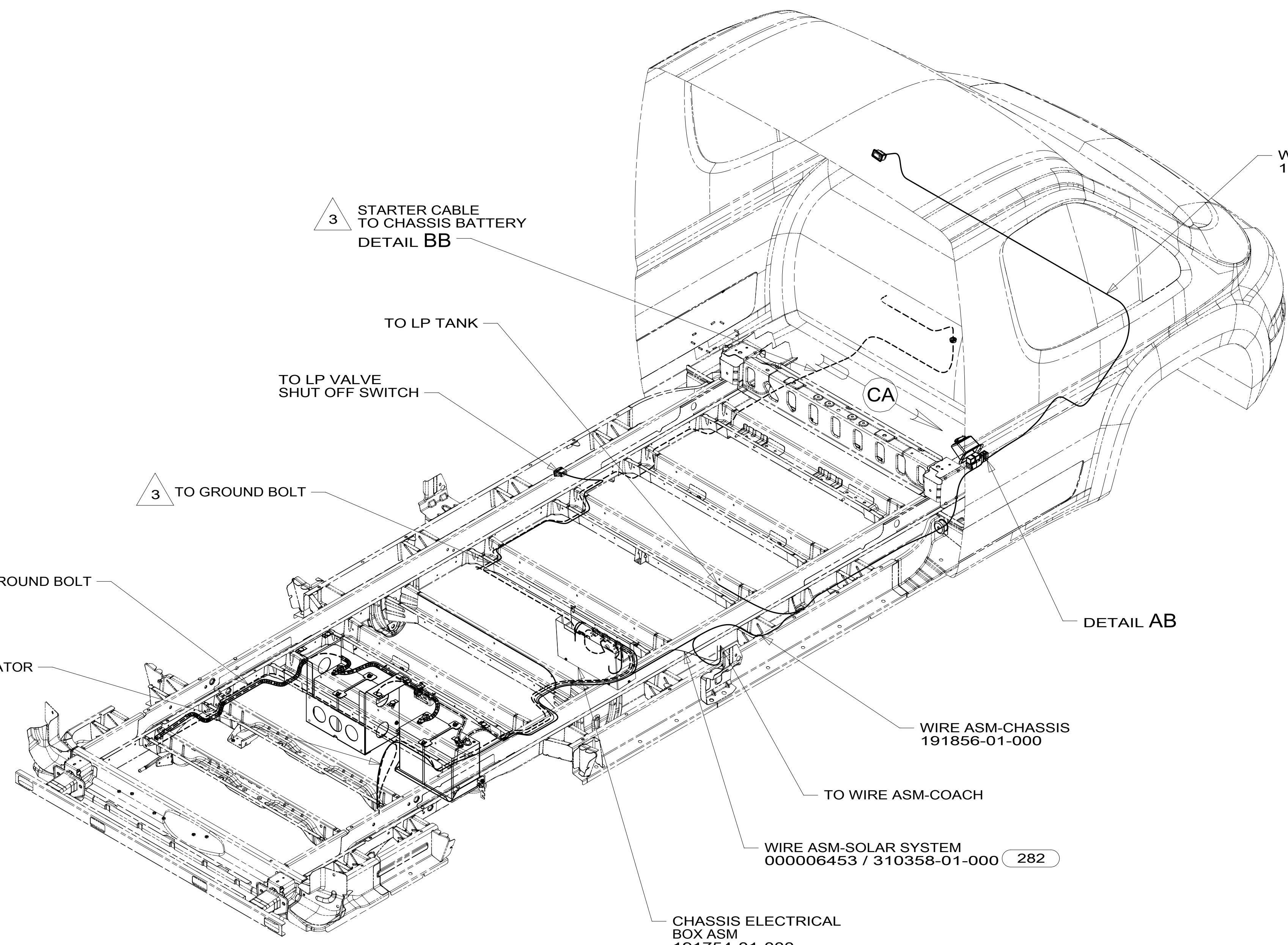


DETAIL AB



3 STARTER CABLE TO CHASSIS BATTERY
DETAIL BB

TO LP TANK

TO LP VALVE SHUT OFF SWITCH

3 TO GROUND BOLT

4 TO GROUND BOLT

TO GENERATOR

WIRE ASM-CHASSIS
191856-01-000

WIRE ASM-SOLAR SYSTEM
000006453 / 310358-01-000 282

CHASSIS ELECTRICAL
BOX ASM
191754-01-000

WIRE ASM-IP,MAIN
190510-01-000

DETAIL AB

TO WIRE ASM-COACH

- 4 REMOVE PAINT AND UNDER COATING FROM GROUND BOLT AND NUT TO INSURE PROPER CONTACT.
- 3 SEE BATTERY INSTL FOR ADDITIONAL INFORMATION.

2. SECURE CONDUIT 41953, TAB AS REQUIRED, OVER ALL WIRES IN CONTACT WITH SHARP EDGES.
1. AT MINIMUM ALL WIRES TO BE SUPPORTED AND SECURED PER CODE REQUIREMENTS. USE CLAMP 10495 OR 10497 OR WIRE TIE 8343 OR 108046 AND SCREW G67-XX-XXX OR G56-XX-XXX AS APPROPRIATE FOR INSTALLATION.

NOTES:

FOR ELECTRICAL TORQUE SPECIFICATIONS SEE DWG NO. 128783-01-000

FOR ELECTRICAL CALLOUTS SEE DWG NO. 121339-01-000

- 282 SOLAR PANEL - 100 WATT
- 1MS RAM-9,350# GVWR, GAS_VAN
- 265 CODES/STANDARDS-CSA/CMVSS
- 1B1 CODES/STANDARDS USA

1B1 265 1MS



DSNR:		ALL DIMENSIONS ARE IN MILLIMETERS	
DIFFR:		MATERIAL:	
UNSPECIFIED TOLERANCES:			
WHOLE DIM (X)	3		
ONE-PLACE (X.X)	1.5		
TWO-PLACE (X.XX)	0.50		
ANGLE	1°		
REFER TO ES0018 FOR FASTENER TIGHTENING GUIDELINES		WEIGHT: (LBS)	FIRST USED:
DESCRIPTION: WIRING INSTL-CHASSIS			
SHEET:	ITEM/PART NO.:	REV:	
1 OF 4	000177276 / 30072901000		
REF:		1 20-Sep-2016	

D

C

B

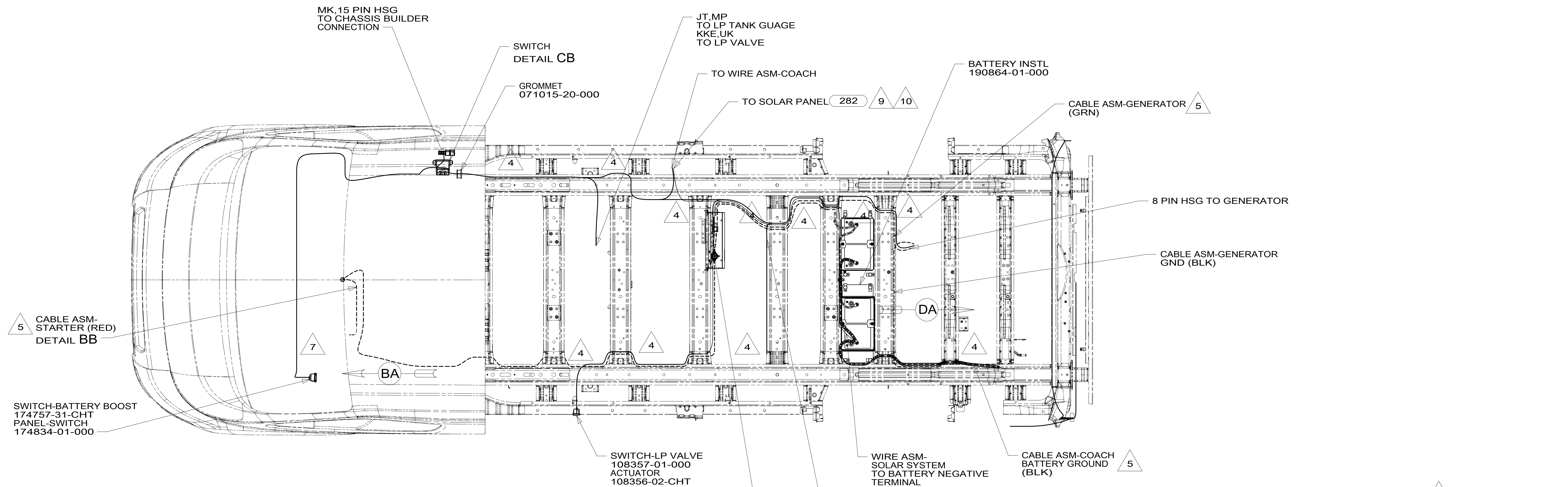
A

D

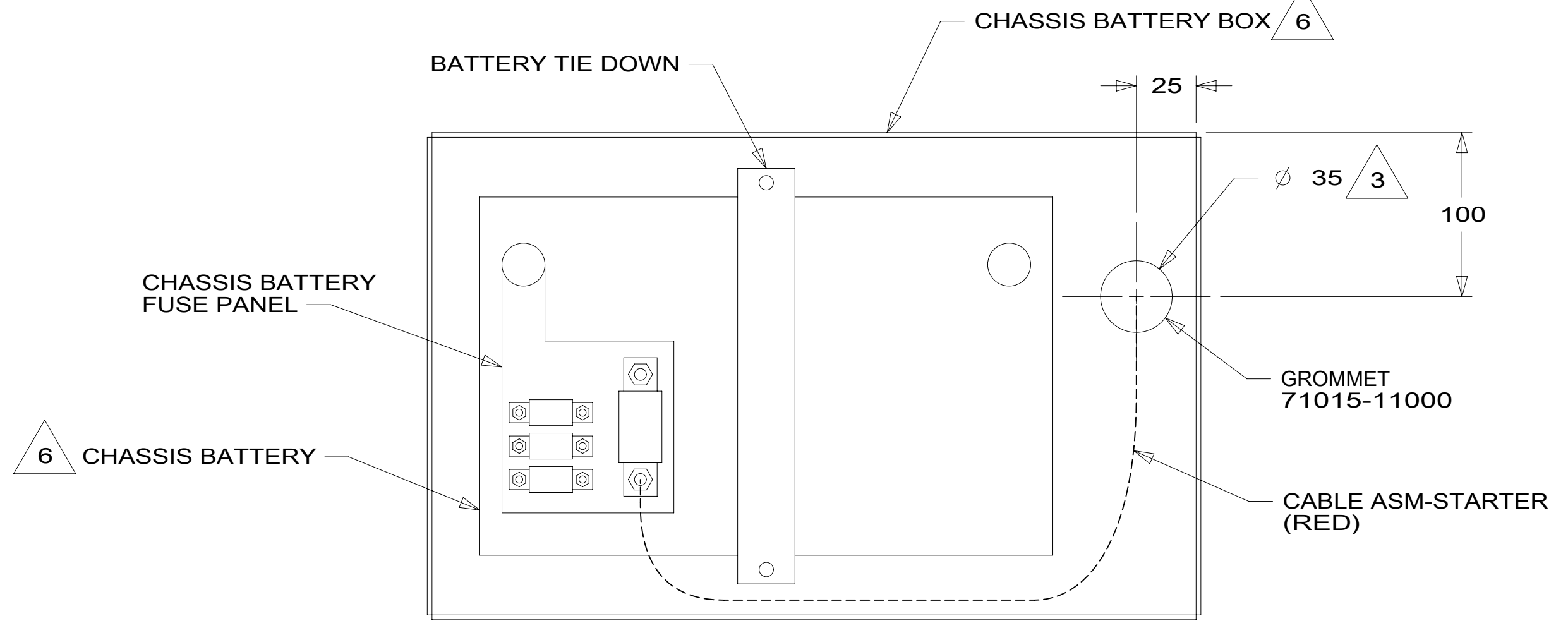
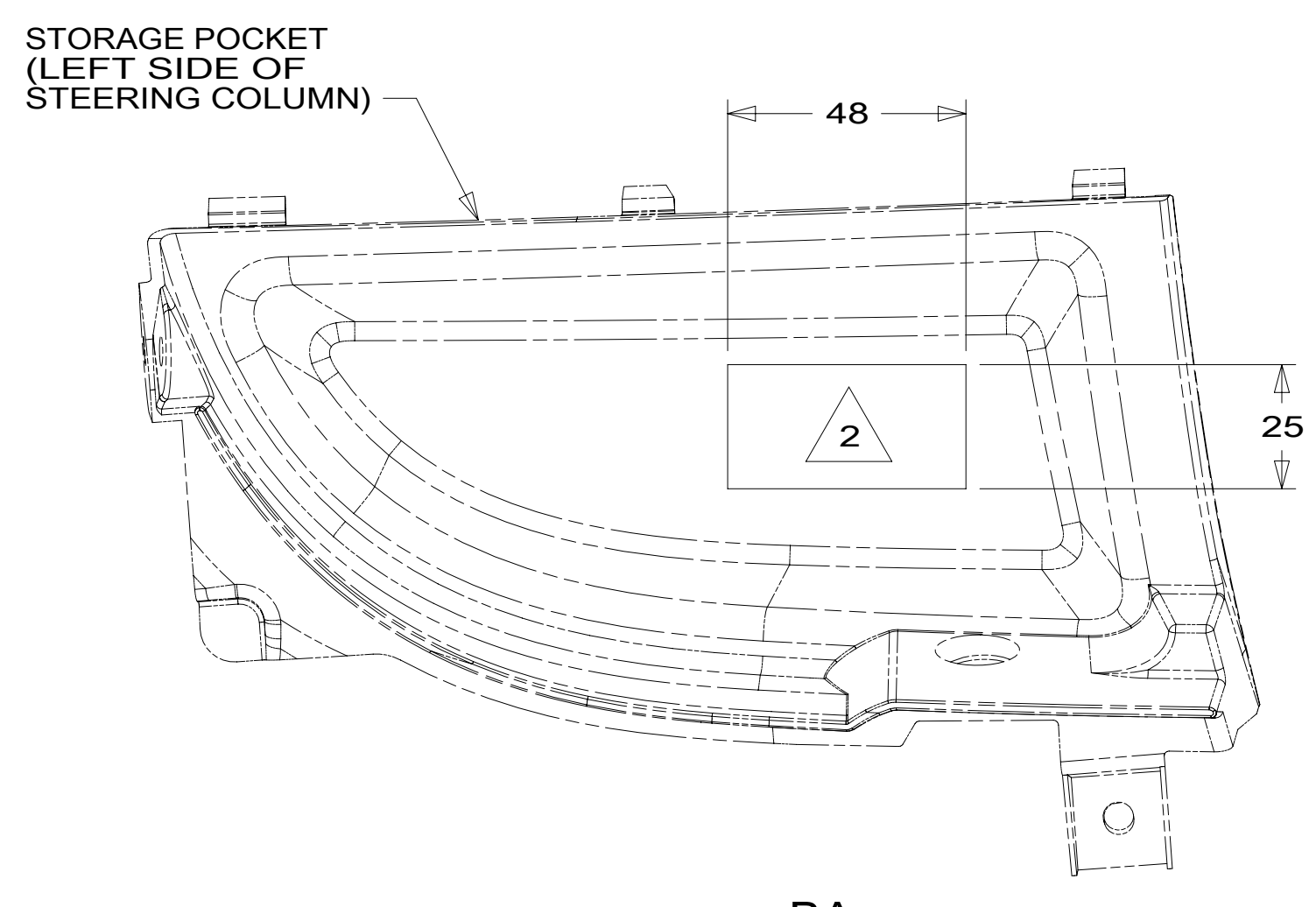
C

B

A



- 10 SEE CHASSIS ELECTRICAL BOX ASM FOR ADDITIONAL INFORMATION.
- 9 SEE WIRING INSTL-BODY, 12V FOR ADDITIONAL INFORMATION.
- 8. AT MINIMUM ALL WIRES TO BE SUPPORTED AND SECURED PER CODE REQUIREMENTS. USE CLAMP 10495 OR 10497 OR WIRE TIE 8343 OR 108046 AND SCREW G67-XX-XXX OR G56-XX-XXX AS APPROPRIATE FOR INSTALLATION.
- 7 SECURE WIRE HARNESS WITH CABLE TIE 008343-02-000.
- 6 LOCATED IN CAB FLOOR.
- 5 SEE BATTERY INSTL FOR ADDITIONAL INFORMATION.
- 4 CLAMP 83610-02-000, SCREW G39-08-12U.
- 3 DRILL HOLE IN BOTTOM OF PLASTIC BATTERY BOX.
- 2 CUTOUT BACKSIDE OF POCKET TO DIMENSION SHOWN.
- 1. SECURE CONDUIT 41953, TAB AS REQUIRED, OVER ALL WIRES IN CONTACT WITH SHARP EDGES.



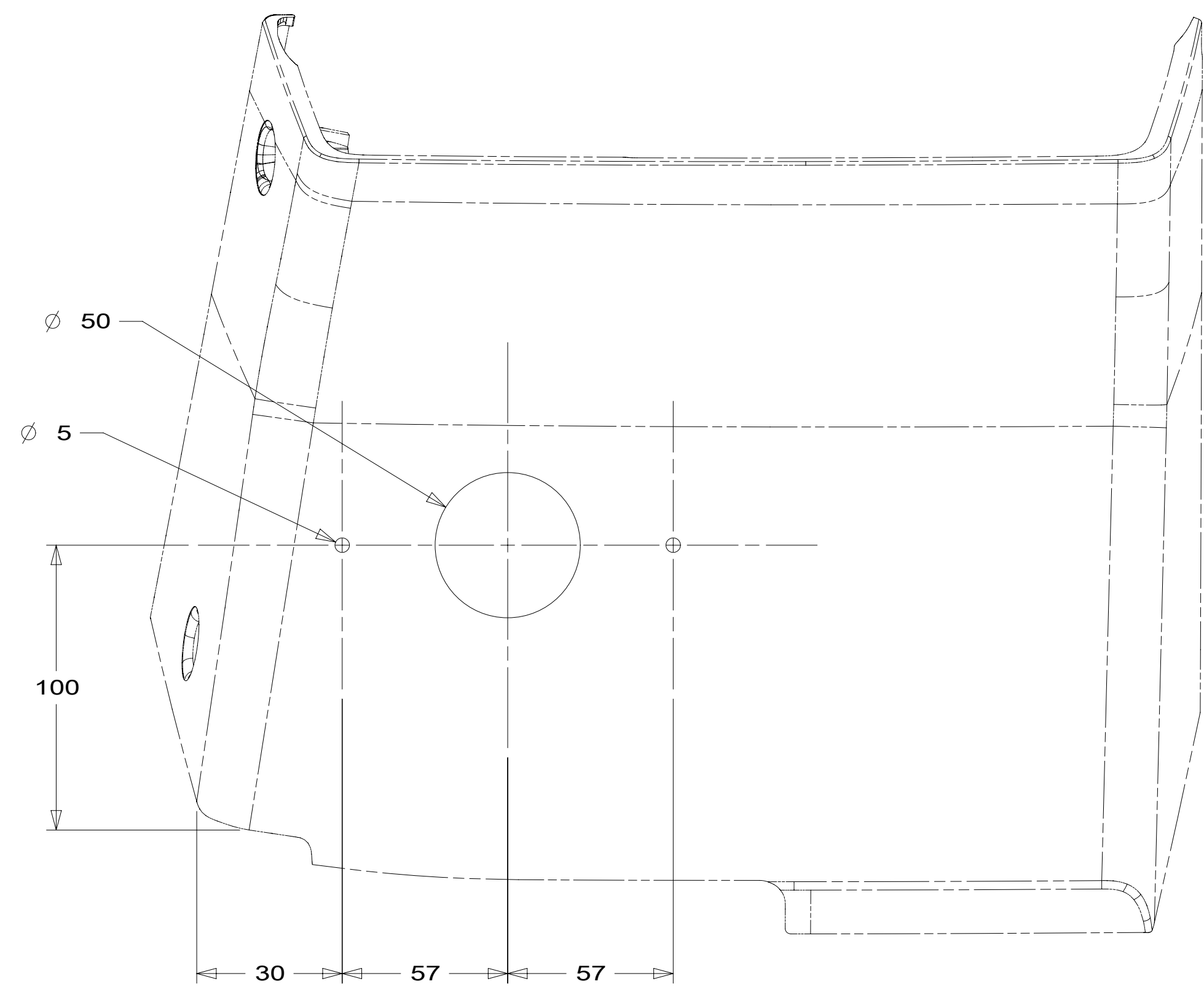
FOR ELECTRICAL TORQUE SPECIFICATIONS SEE DWG NO. 128783-01-000

FOR ELECTRICAL CALLOUTS SEE DWG NO. 121339-01-000

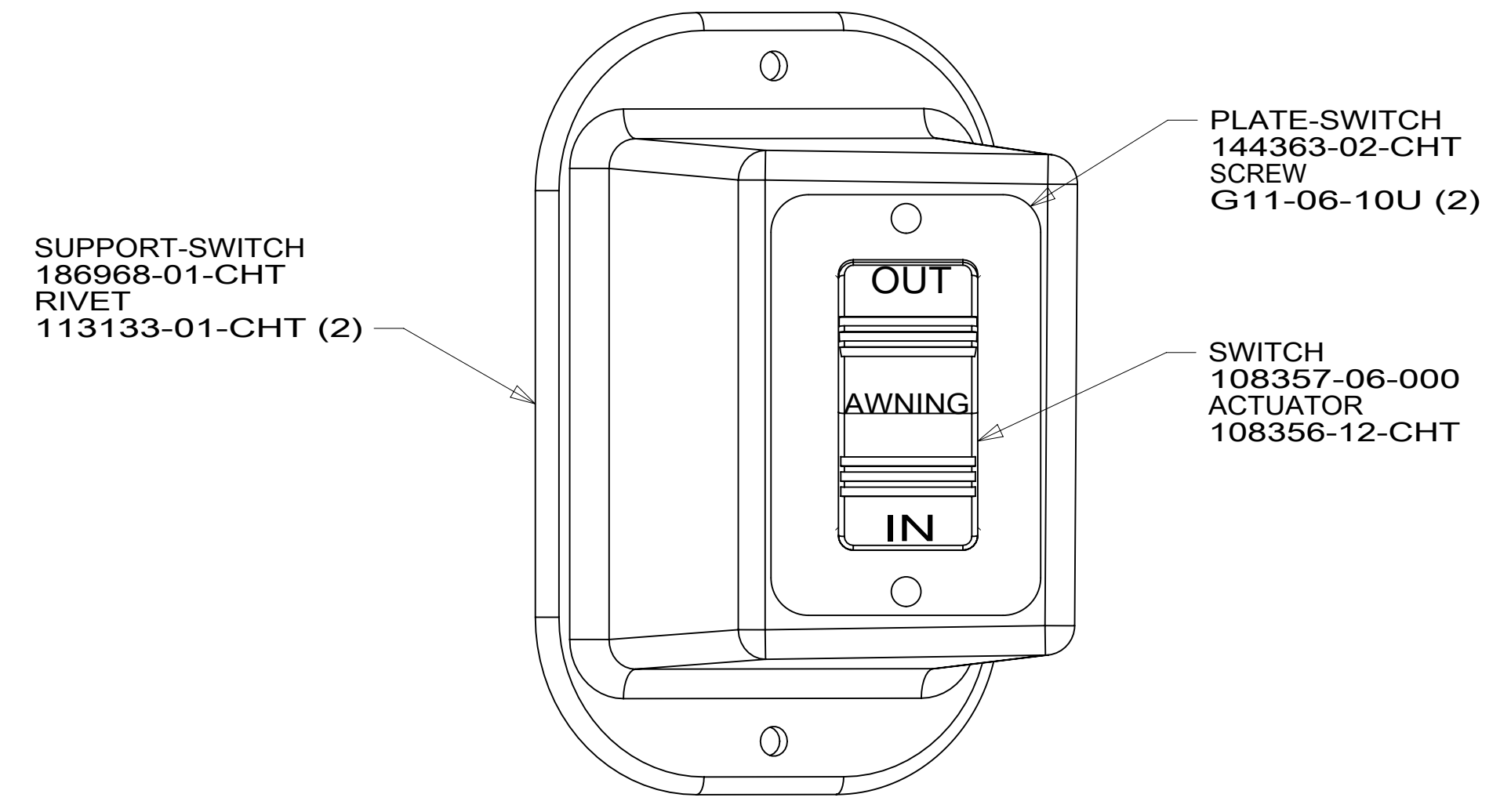
- 1MT RAM-9,350# GVWR-DIESEL-VAN
- 282 SOLAR PANEL - 100 WATT
- 1G8 GENERATOR-2800 WATT
- 1MS RAM-9,350# GVWR, GAS_VAN
- 265 CODES/STANDARDS-CSA/CMVSS
- 1B1 CODES/STANDARDS USA

DESCRIPTION: WIRING INSTL-CHASSIS		
SHEET: 2 OF 4	ITEM/PART NO: 000177276 / 30072901000	REV

8 7 6 5 4 3 2 1



VIEW CA



VIEW CB

1. SECURE CONDUIT 41953, TAB AS REQUIRED, OVER ALL WIRES IN CONTACT WITH SHARP EDGES.

NOTES:

FOR ELECTRICAL TORQUE SPECIFICATIONS SEE DWG NO. 128783-01-000

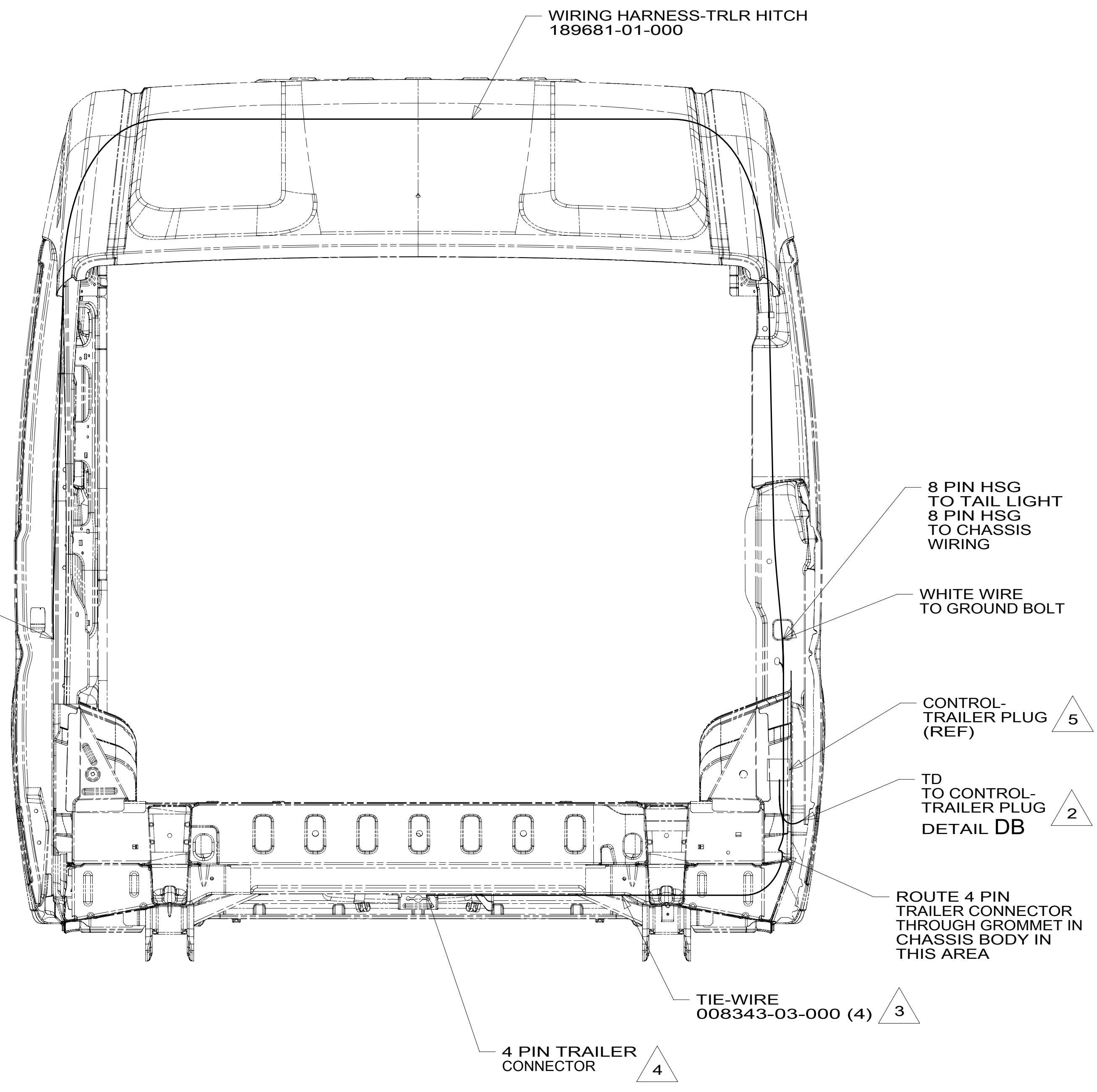
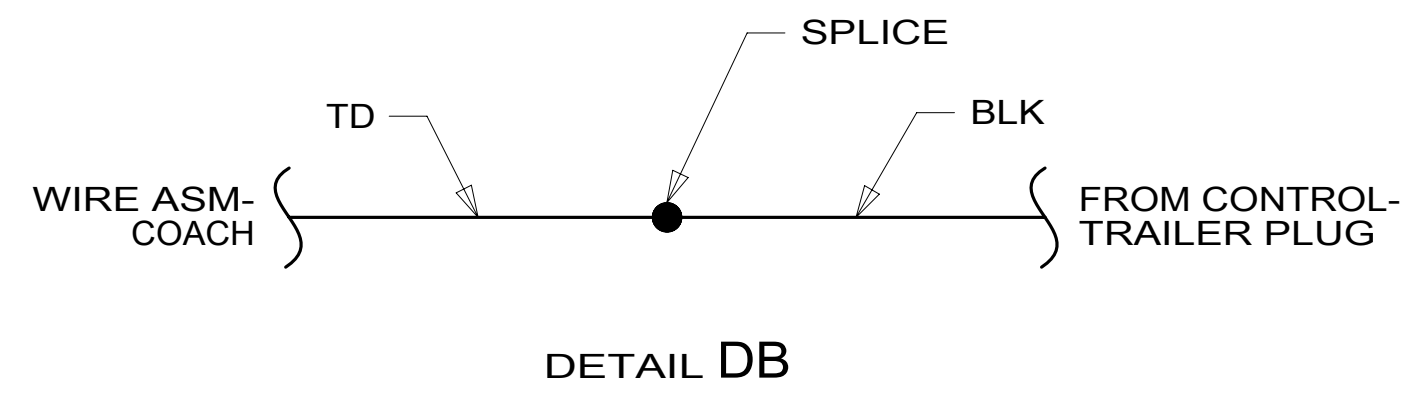
FOR ELECTRICAL CALLOUTS SEE DWG NO. 121339-01-000

- 1MS RAM-9,350# GVWR, GAS_VAN
- 265 CODES/STANDARDS-CSA/CMVSS
- 1B1 CODES/STANDARDS USA

1B1 265 1MS

DESCRIPTION: WIRING INSTL-CHASSIS		
SHEET: 3 OF 4	ITEM/PART NO: 000177276 / 30072901000	REV

8 7 6 5 4 3 2 1 20-Sep-2016



- 5 CONTROL SUPPLIED WITH WIRING HARNESS-TRLR HITCH. SECURE CONTROL IN PLACE WITH DOUBLE SIDED TAPE SUPPLIED WITH WIRING HARNESS-TRLR HITCH.
- 4 WIRE TIE 4-PIN TRAILER PLUG TO HITCH ASSEMBLY NEAR RECEIVER.
- 3 WIRE TIE TRAILER WIRING BEHIND BUMPER.
- 2 SEE WIRING INSTL-BODY, 12V FOR ADDITIONAL INFORMATION.

NOTES:
1. SECURE CONDUIT 41953, TAB AS REQUIRED, OVER ALL WIRES IN CONTACT WITH SHARP EDGES.

VIEW DA

FOR ELECTRICAL TORQUE SPECIFICATIONS SEE DWG NO. 128783-01-000

FOR ELECTRICAL CALLOUTS SEE DWG NO. 121339-01-000

- 1MS RAM-9,350# GVWR, GAS_VAN
- 265 CODES/STANDARDS-CSA/CMVSS
- 1B1 CODES/STANDARDS USA

DESCRIPTION: WIRING INSTL-CHASSIS		
SHEET: 4 OF 4	ITEM/PART NO: 000177276 / 30072901000	REV