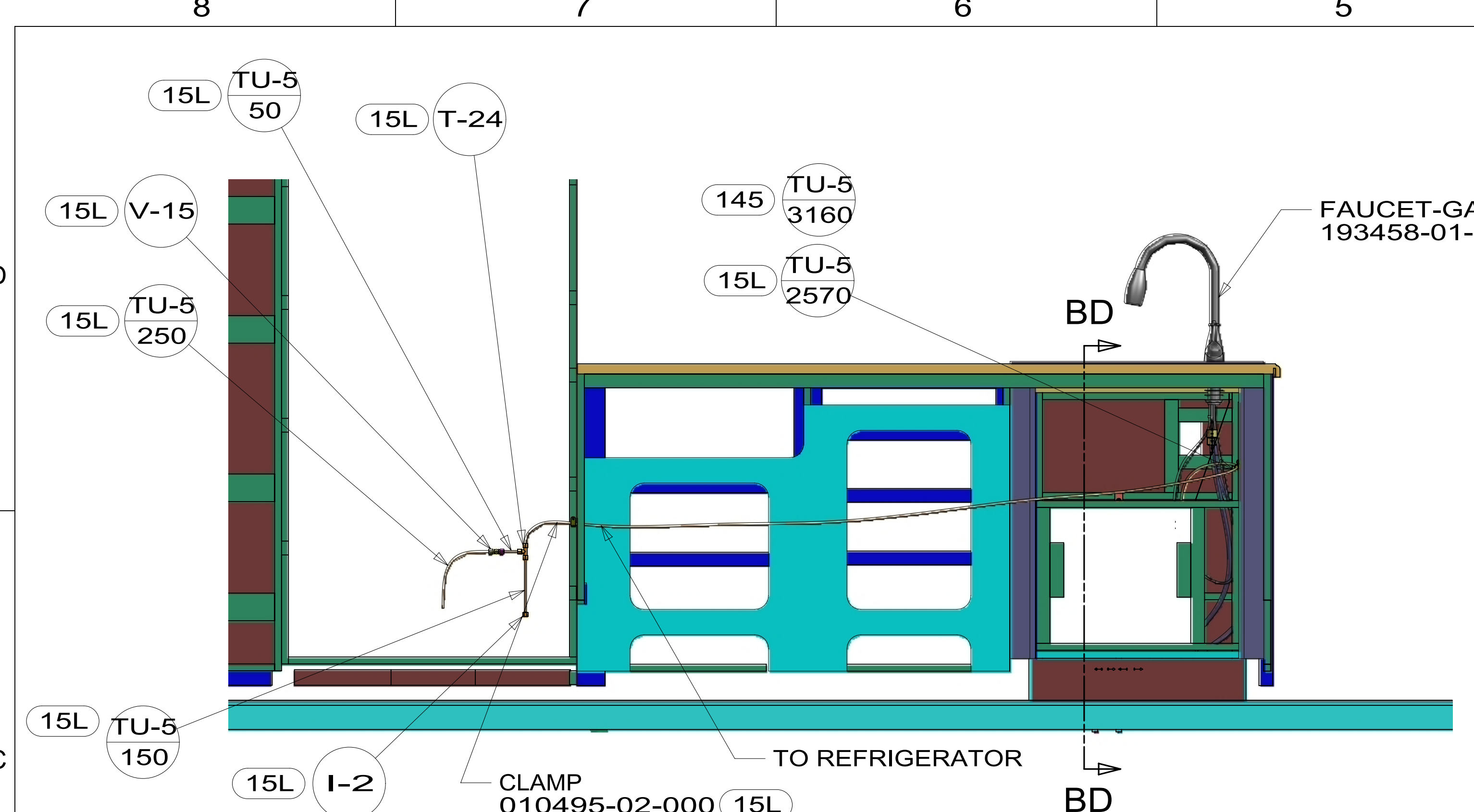


- 10 SEAL VENT HOLE IN DOOR W/SILICONE SEALANT.
- 9. ALL CRIMP FITTINGS TO 3/4" PEX TUBING REQUIRE 3/4" CLAMP 140171-05-000.
- 8. ALL CRIMP FITTINGS TO 1/2" PEX TUBING REQUIRE 1/2" CLAMP 140171-03-000.
- 7. ALL CRIMP FITTINGS TO 5/8" FLEX TUBING REQUIRE 5/8" CLAMP 140171-04-000.
- 6 LABEL HOT AND COLD SUPPLY TUBES AND TAPE FITTING TO TUBE BEFORE CABINET SET TO PREVENT MOVEMENT.
- 5 ADD PIPE WRAP (LADDER SCRAP 110157-02-000) INSULATION.
- 4 ADD TEFLON TAPE 010405-02-000.
- 3. ALL TUBING TO BE SECURED AT 1200 INTERVALS MAXIMUM WITH CLAMP 010495-01-000 AND SCREW 000G67-10-12U OR EQUIVALENT.
- 2. TUBING TO BE INSTALLED WITH SUFFICIENT SLOPE TO PROVIDE DRAINAGE TO NEAREST VALVE.
- 1. PLASTIC FITTINGS TO BE SEALED WITH SEALANT 084456-01-000.

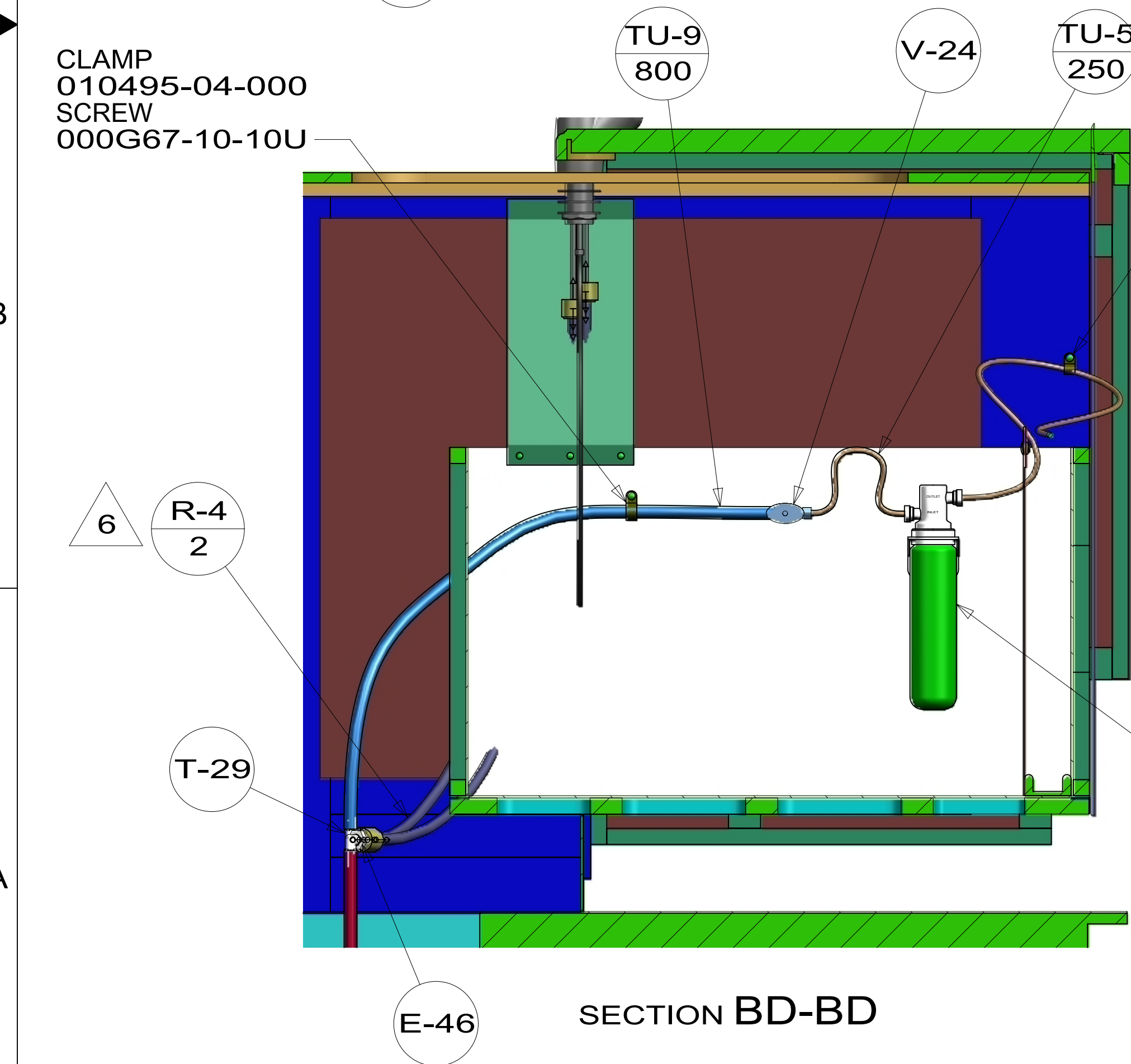
- 145 REFR-EXTRA CAP W/ICEMAKER
- 15L RESIDENTIAL REFRIGERATOR PKG

WINNEBAGO[®]
COPYRIGHT 2016 WINNEBAGO INDUSTRIES, INC.

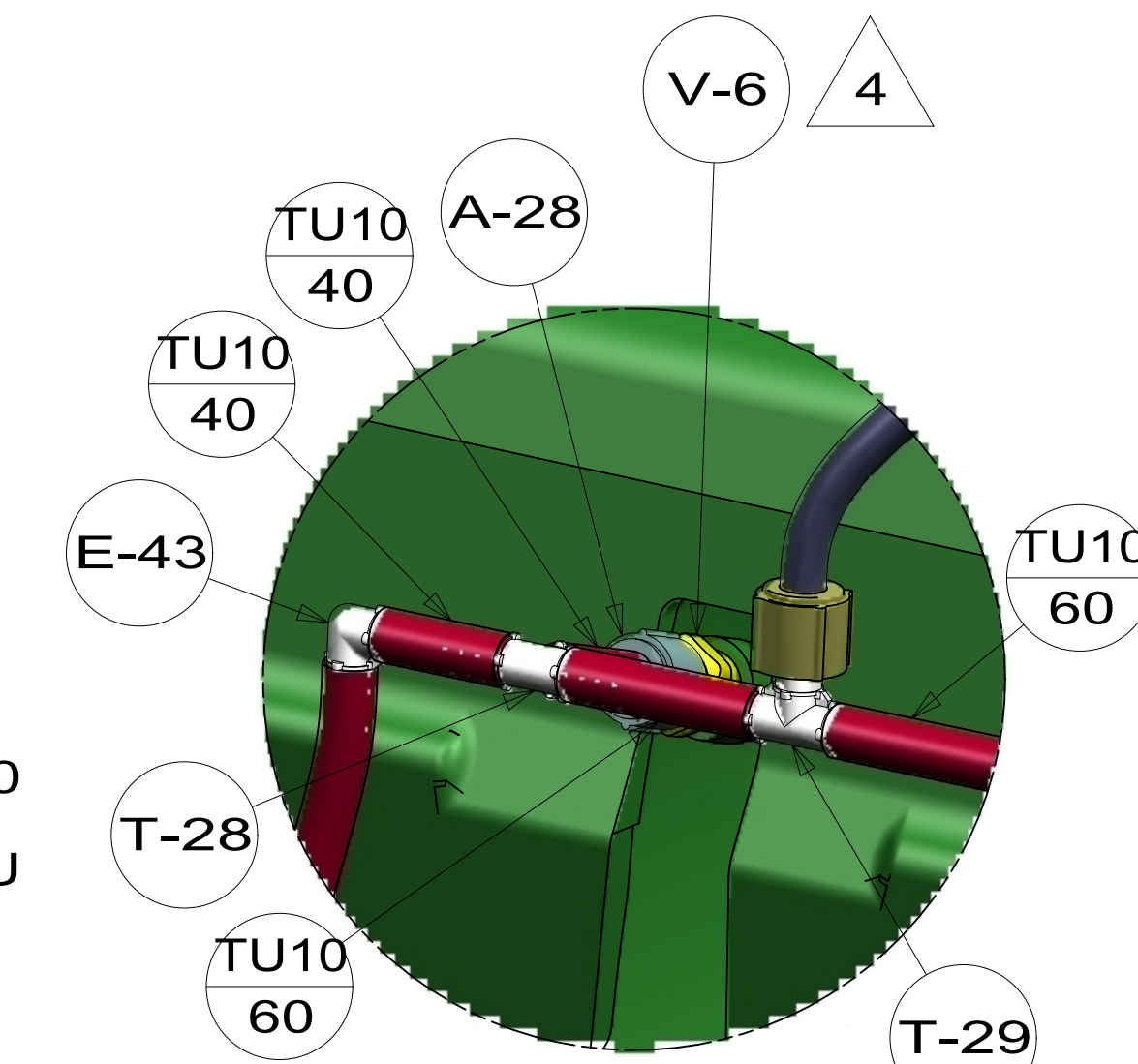
DSNR:		ALL DIMENSIONS ARE IN MILLIMETERS	
DIFTR:		⊕	
UNSPECIFIED TOLERANCES:		MATERIAL:	
WHOLE DIM (X)	3		
ONE-PLACE (X.X)	1.5		
TWO-PLACE (X.XX)	0.50		
ANGLE	1°		
REFER TO ES0018 FOR FASTENER TIGHTENING GUIDELINES		WEIGHT: (LBS)	FIRST USED: (REF)
DESCRIPTION: WATER SYSTEM INSTL			
SHEET:	ITEM/PART NO:	REV	
1 OF 5	000177057 / 30039001000		



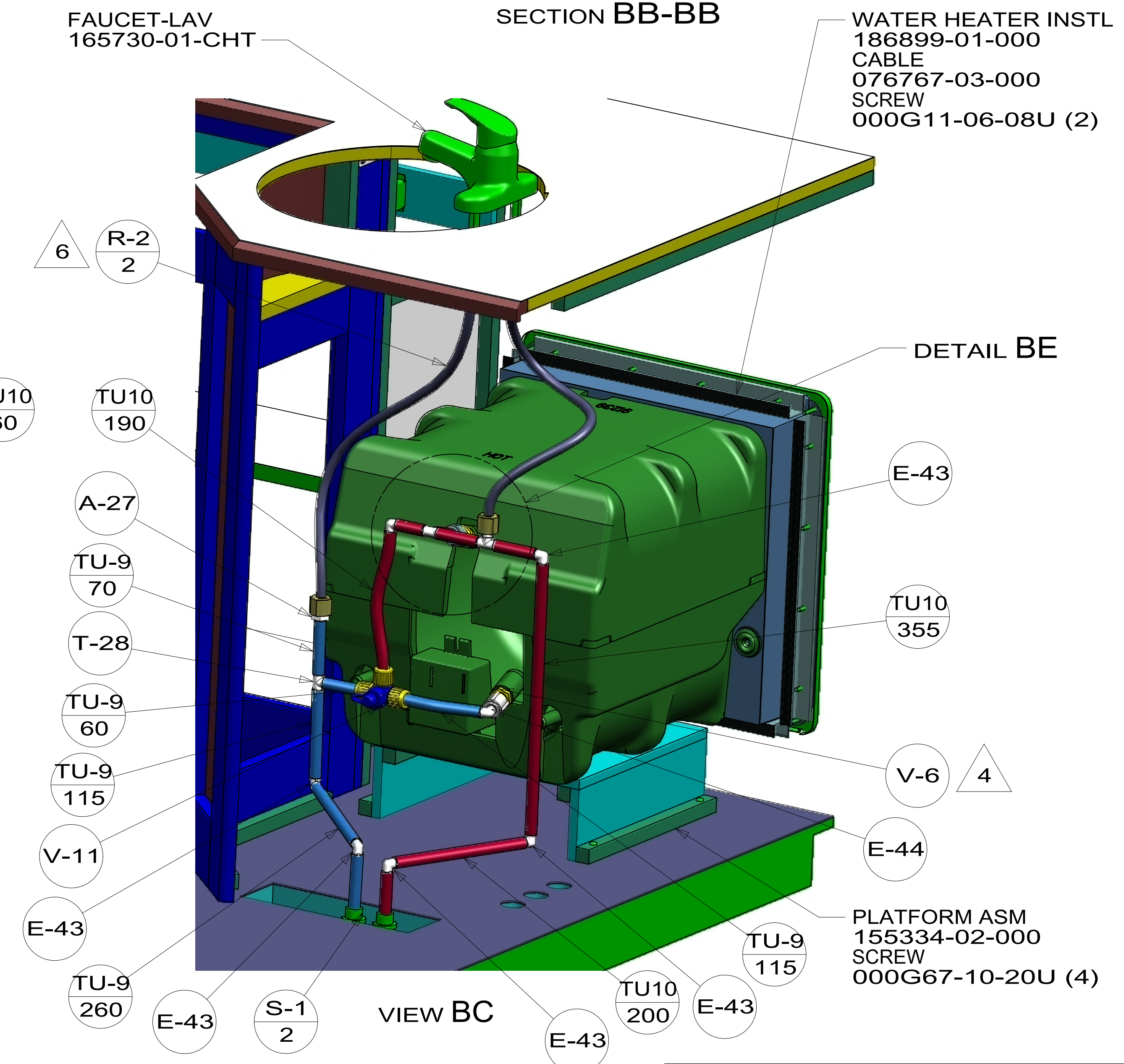
VIEW BA (ROTATED)



SECTION BD-BD

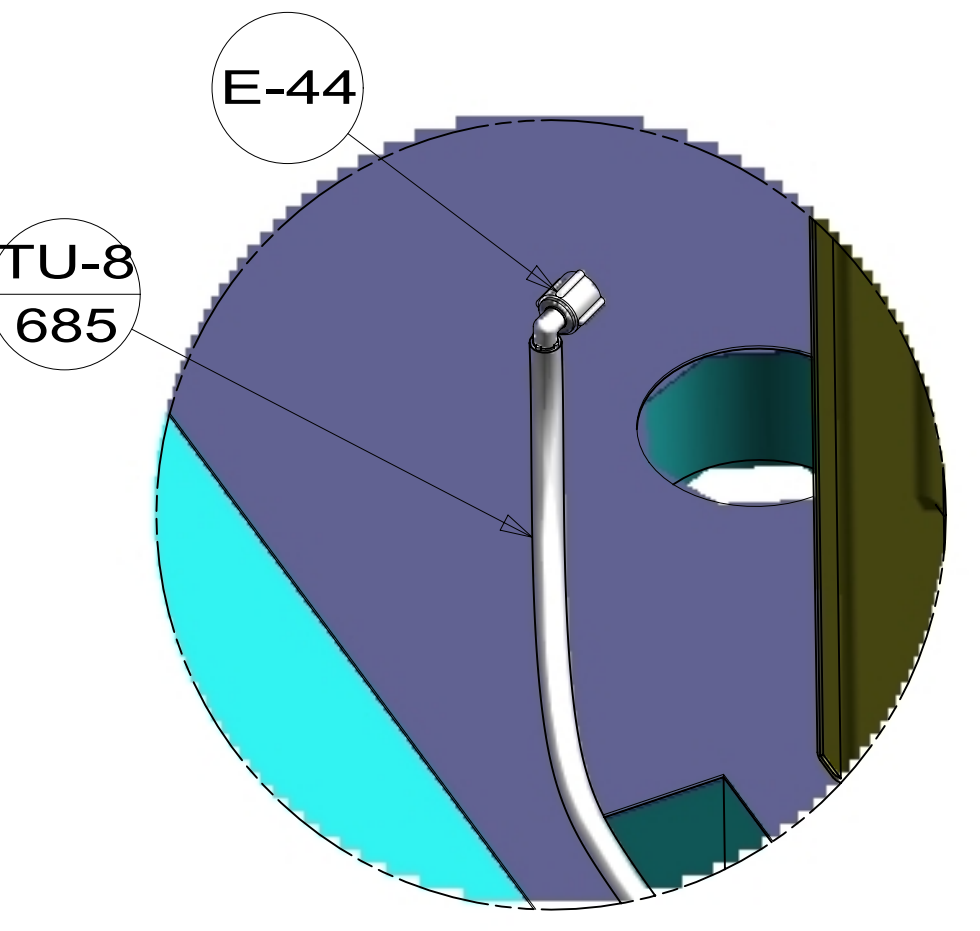
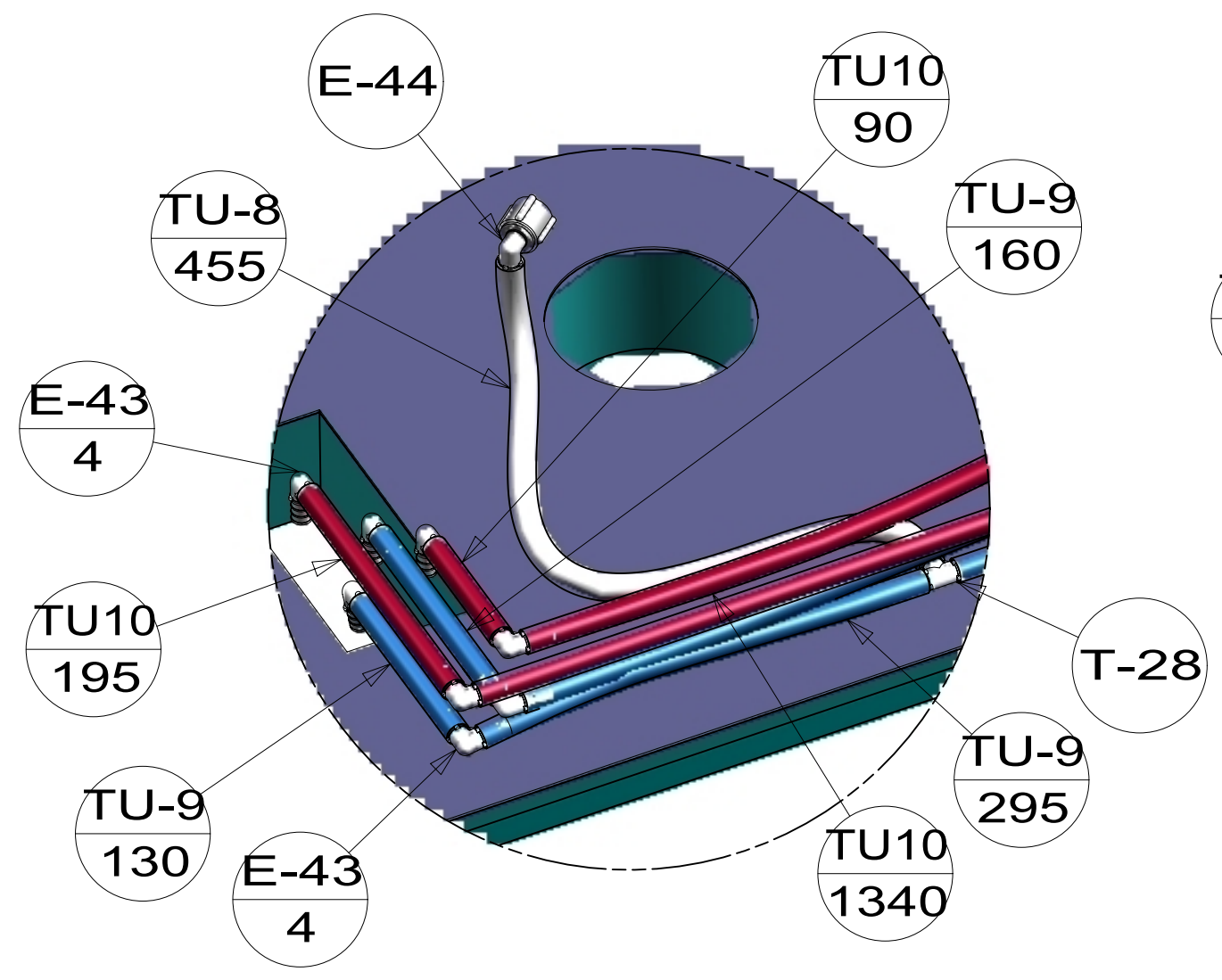
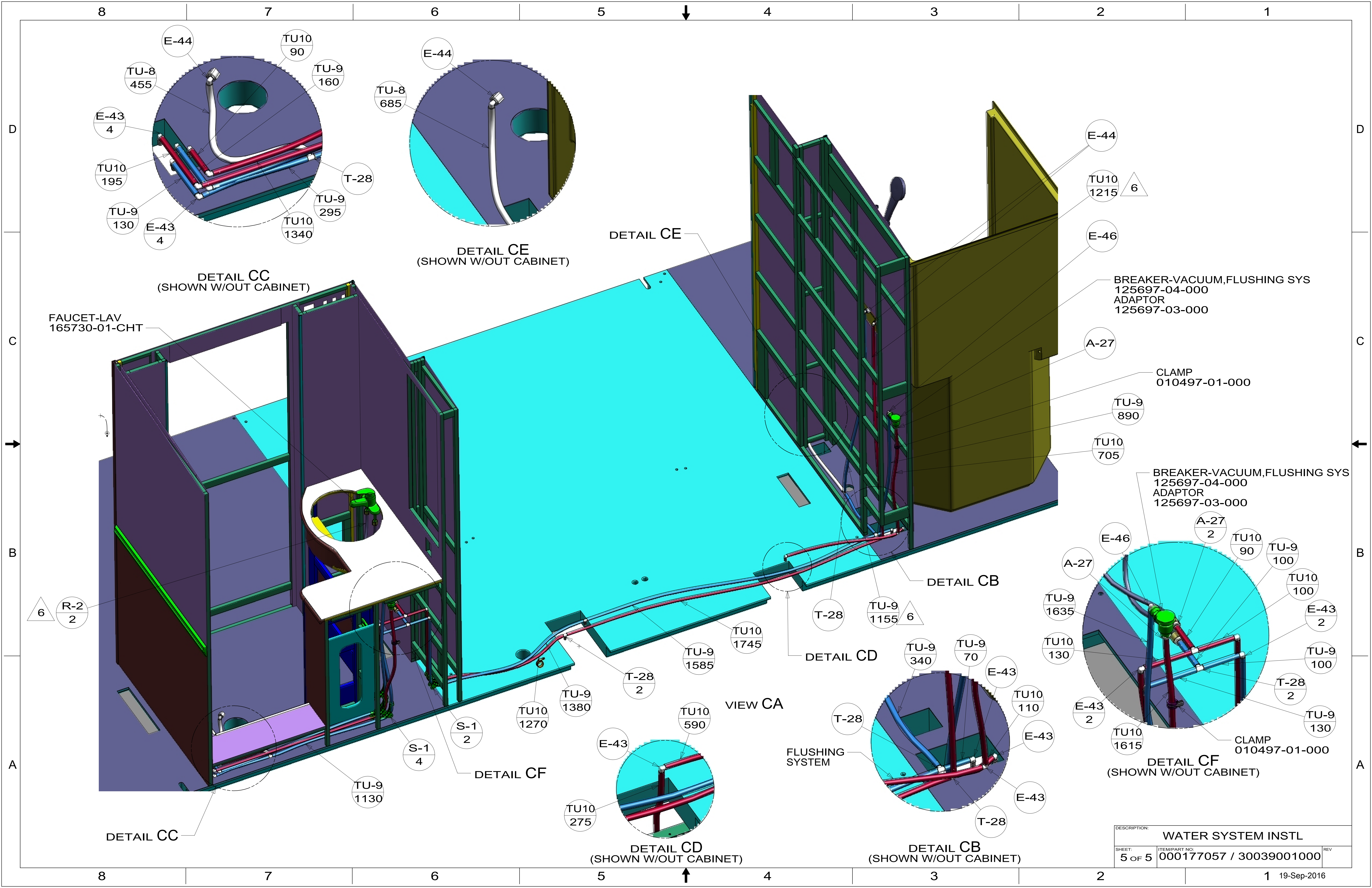


DETAIL BE



VIEW BC

DESCRIPTION:		
WATER SYSTEM INSTL		
SHEET:	ITEM/PART NO.:	REV
2 OF 5	000177057 / 30039001000	
		19-Sep-2016



FAUCET-LAV
165730-01-CHT

6
R-2
2

DETAIL CC

DETAIL CE
(SHOWN W/OUT CABINET)

DETAIL CE

E-44
TU10 1215 6

E-46

BREAKER-VACUUM,FLUSHING SYS
125697-04-000
ADAPTOR
125697-03-000

A-27

CLAMP
010497-01-000

TU-9 890

TU10 705

BREAKER-VACUUM,FLUSHING SYS
125697-04-000
ADAPTOR
125697-03-000

A-27 2

TU-9 1635

TU10 130

TU10 1615

E-43 2

E-43 2

E-43 2

CLAMP
010497-01-000

DETAIL CF
(SHOWN W/OUT CABINET)

DETAIL CB

T-28

TU-9 1155 6

DETAIL CD

TU-9 340

TU-9 70

E-43

TU10 110

E-43

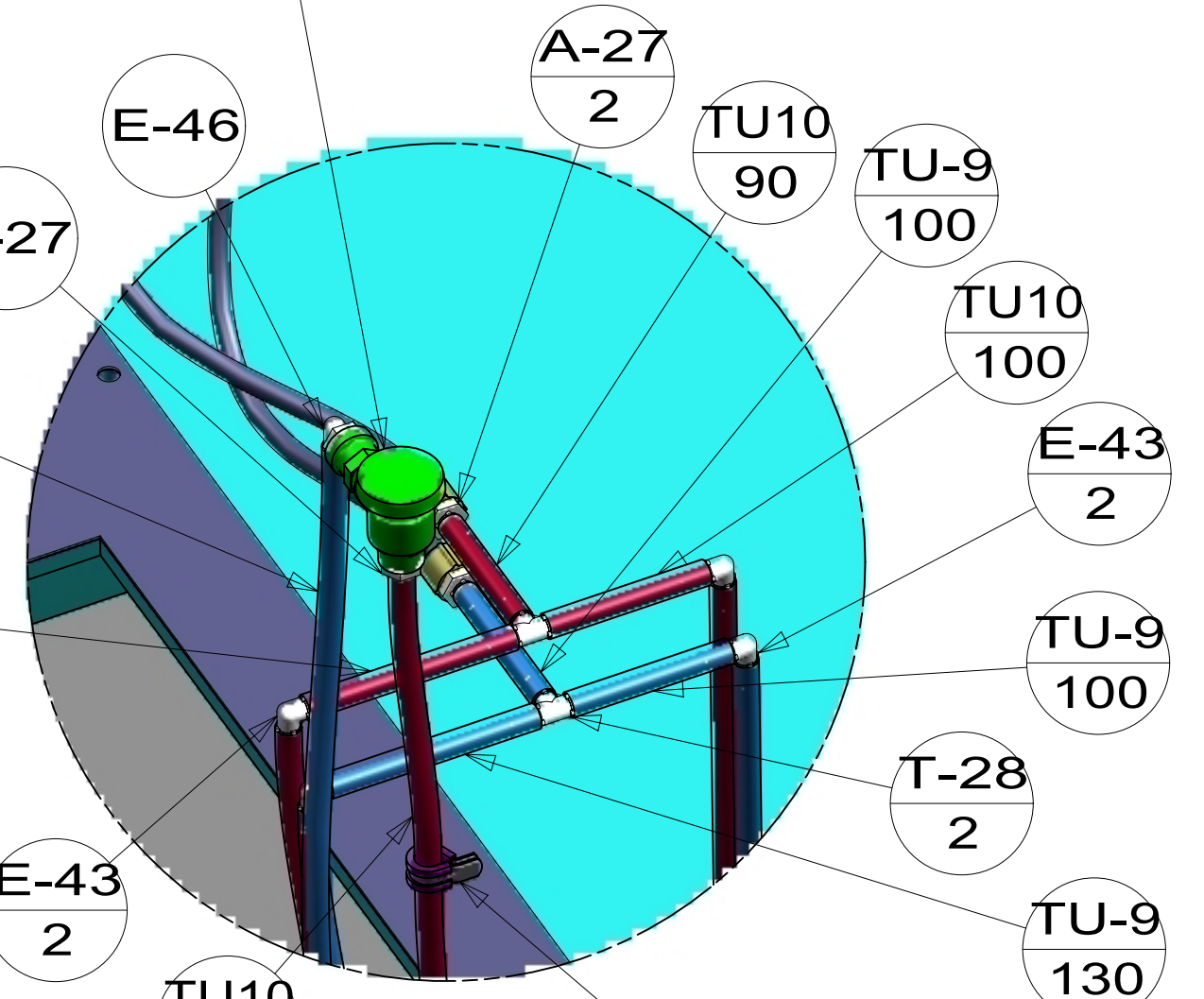
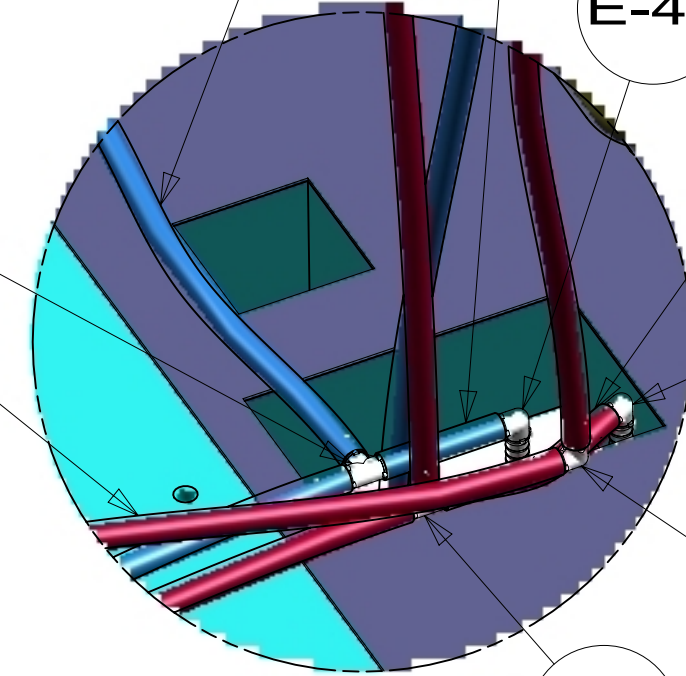
E-43

T-28

VIEW CA

T-28

FLUSHING SYSTEM



T-28 2

TU-9 1585

TU10 1745

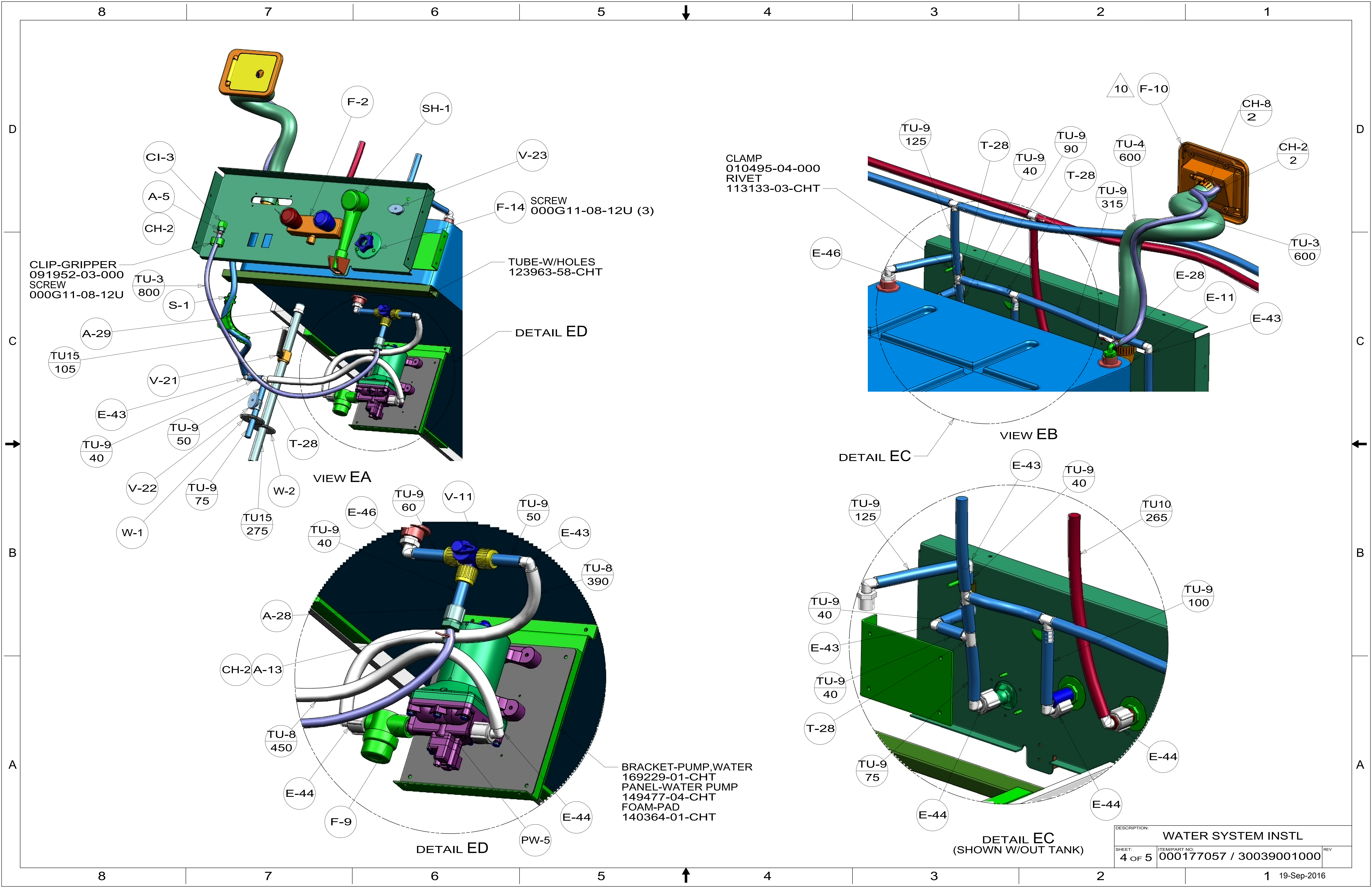
E-43

TU10 275

DETAIL CD
(SHOWN W/OUT CABINET)

DETAIL CB
(SHOWN W/OUT CABINET)

DESCRIPTION: WATER SYSTEM INSTL		
SHEET: 5 OF 5	ITEM/PART NO: 000177057 / 30039001000	REV
8	7	1 19-Sep-2016



CLIP-GRIPPER
091952-03-000
SCREW
000G11-08-12U

F-14 SCREW
000G11-08-12U (3)

TUBE-W/HOLES
123963-58-CHT

DETAIL ED

VIEW EA

DETAIL ED

BRACKET-PUMP, WATER
169229-01-CHT
PANEL-WATER PUMP
149477-04-CHT
FOAM-PAD
140364-01-CHT

CLAMP
010495-04-000
RIVET
113133-03-CHT

VIEW EB

DETAIL EC

DETAIL EC
(SHOWN W/OUT TANK)

DESCRIPTION:		WATER SYSTEM INSTL	
SHEET:	ITEM/PART NO.:	REV	
4 OF 5	000177057 / 30039001000		