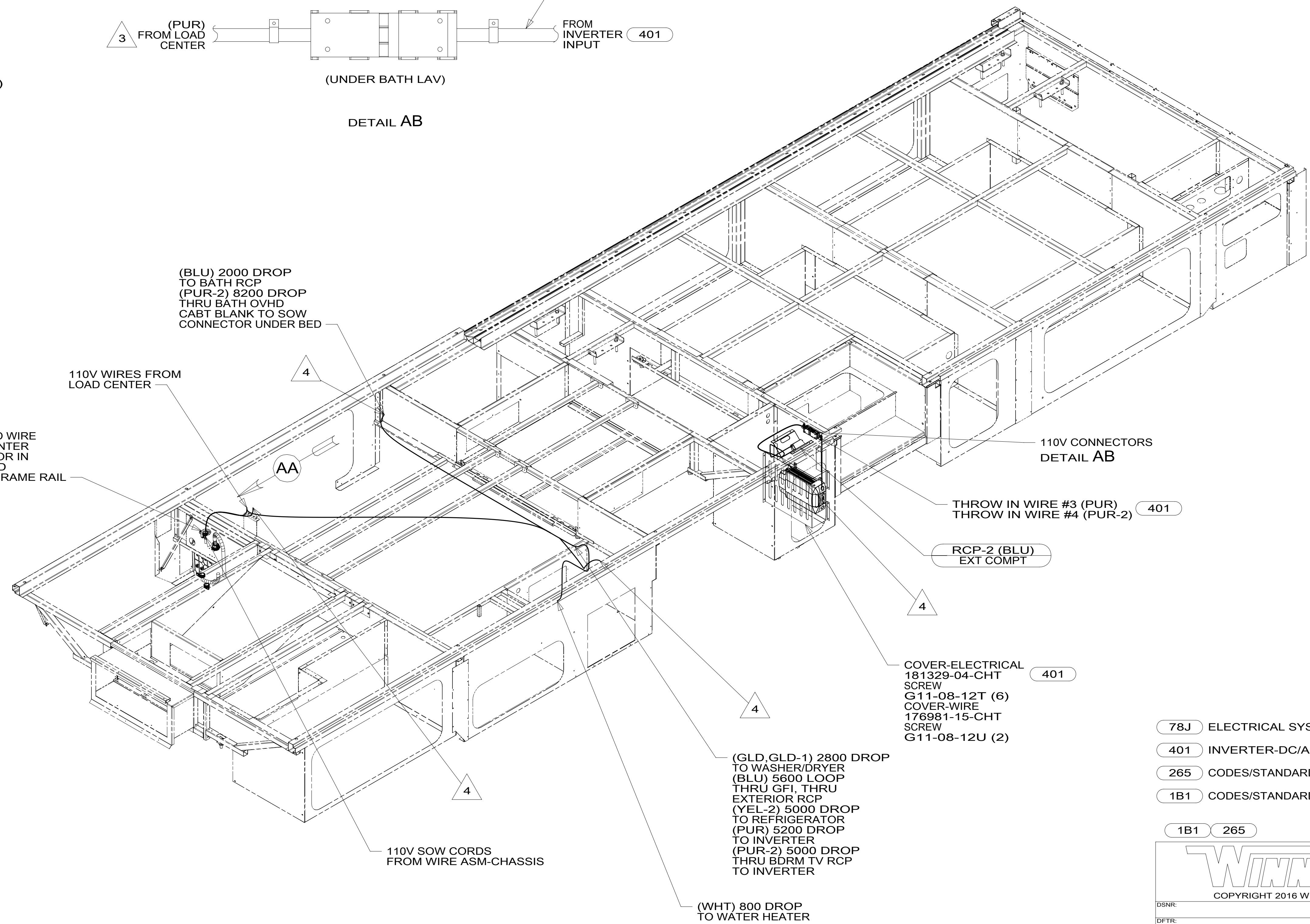
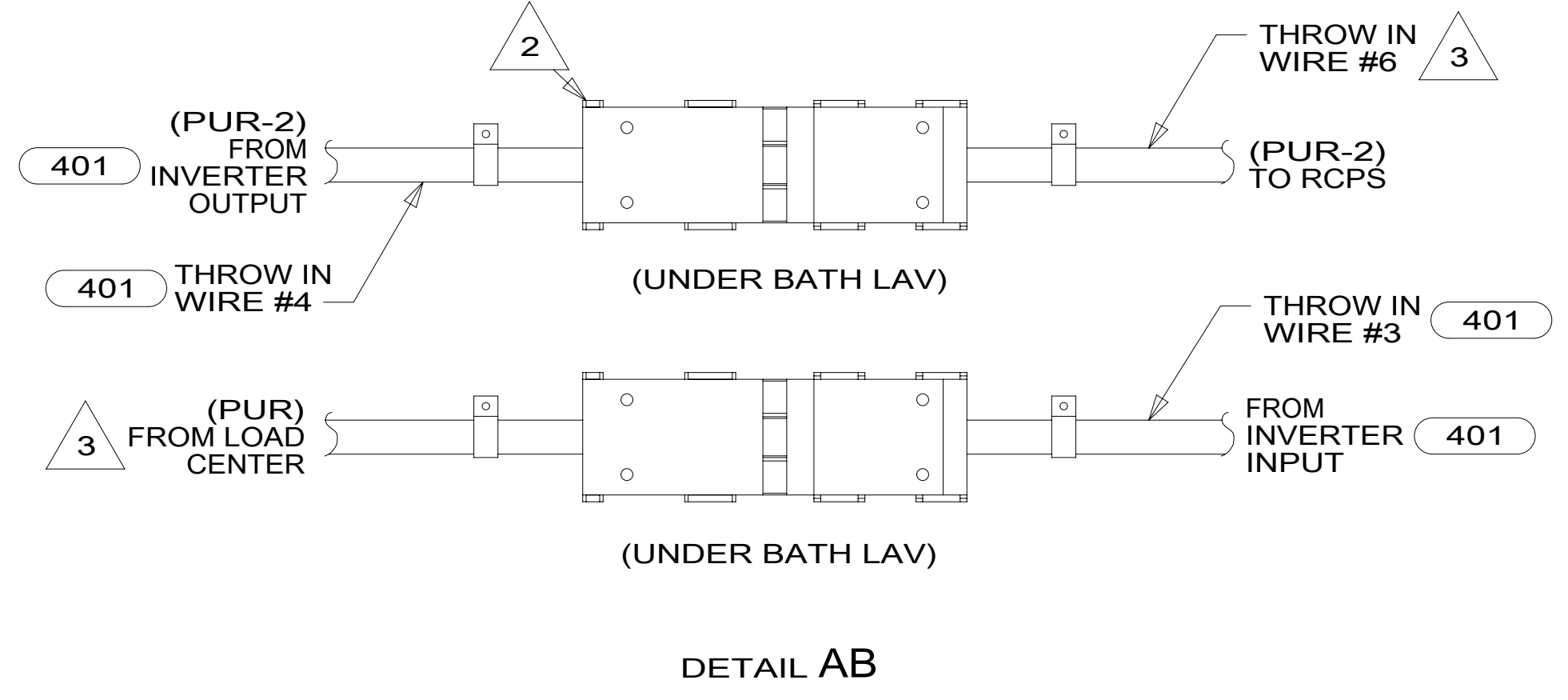
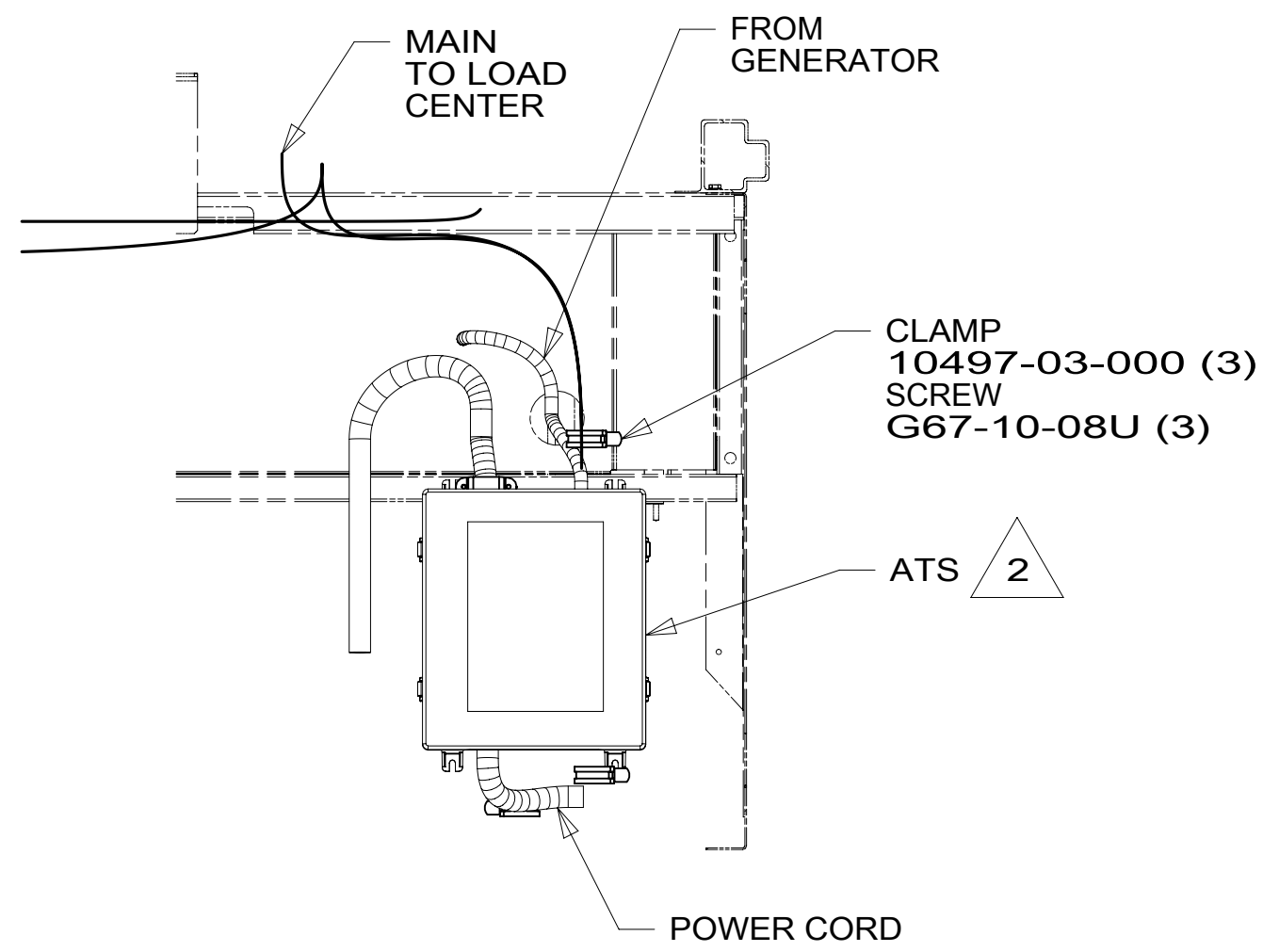


DRAWING NO.	FEATURE
300364-12	1B1 78J
300364-16	265 78J



5. AT MINIMUM ALL WIRES TO BE SUPPORTED AND SECURED PER CODE REQUIREMENTS. USE CLAMP 10495 OR 10497 OR WIRE TIE 8343 OR 108046 AND SCREW G67-XX-XXX OR G56-XX-XXX AS APPROPRIATE FOR INSTALLATION.
- 4 WIRE ROUTED THROUGH FLOOR IN THIS AREA.
- 3 WITHOUT INVERTER THROW IN #2 (PUR-2) CONNECTS TO (PUR) FROM LOAD CENTER.
- 2 SEE LOAD CENTER/ATS ASM FOR ADDITIONAL INFORMATION.
1. WIRES ROUTED UNDER FLOOR.

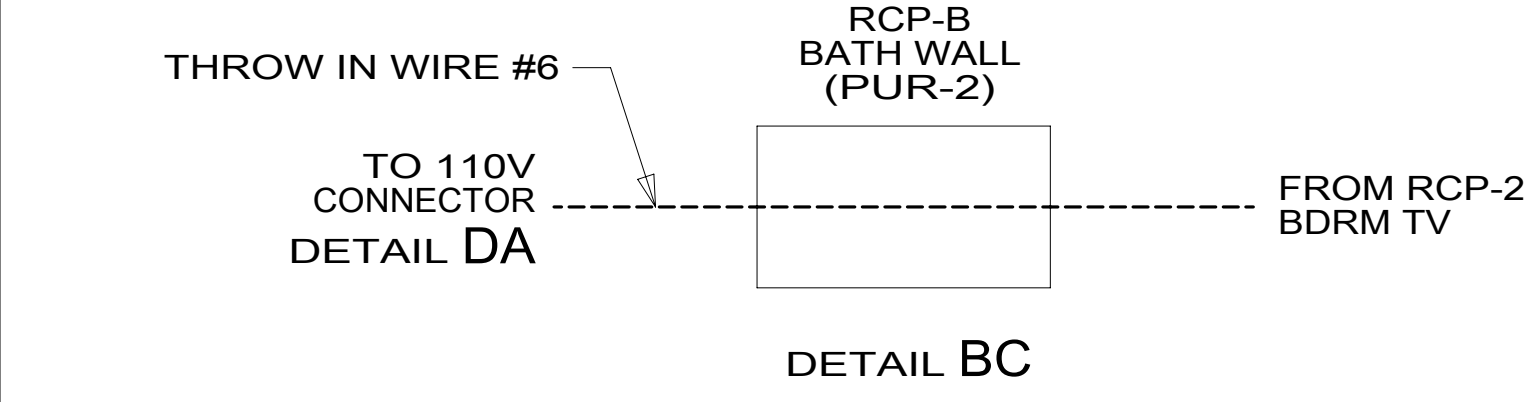
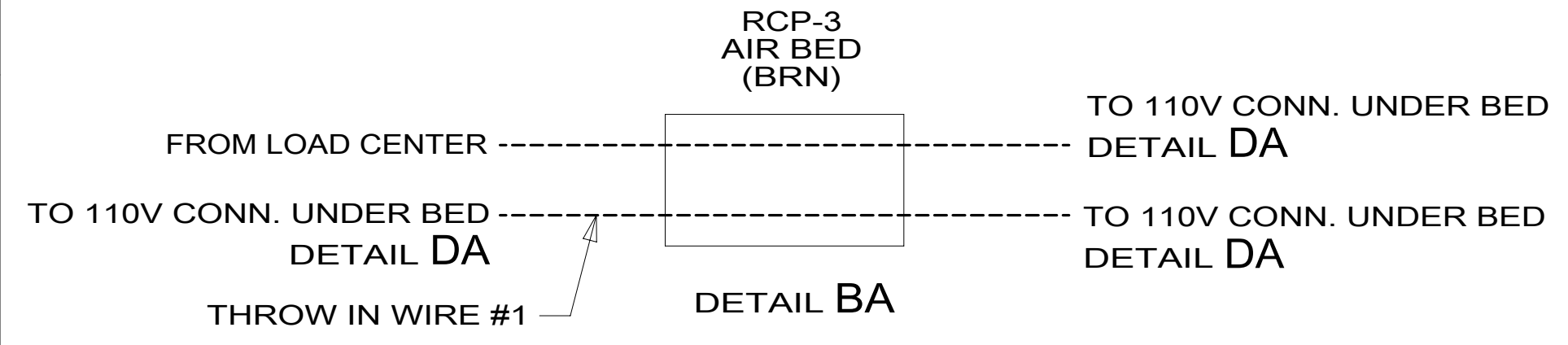
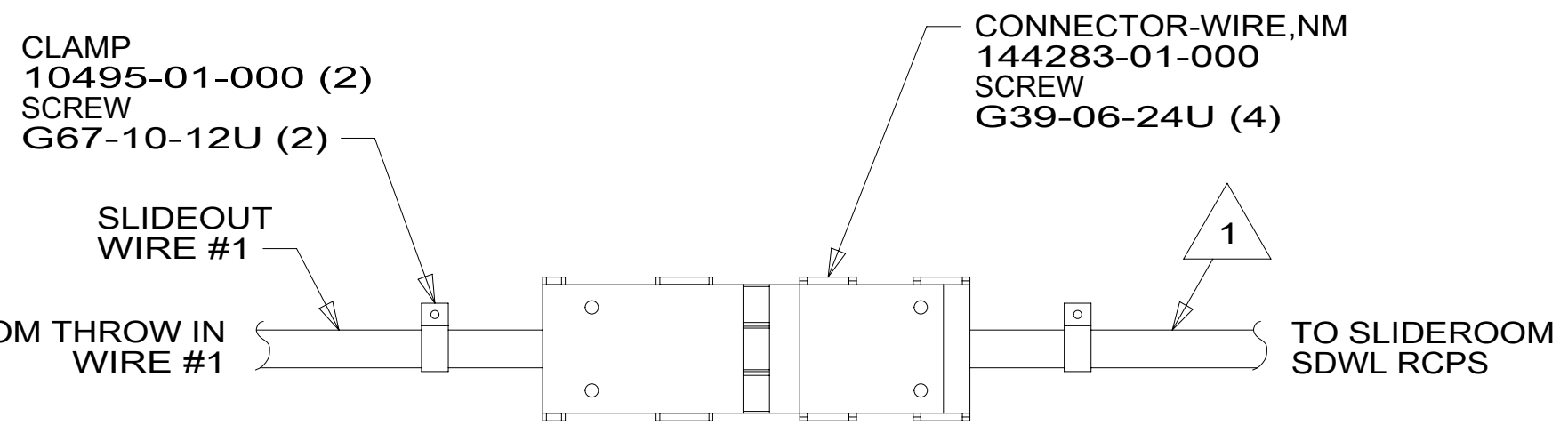
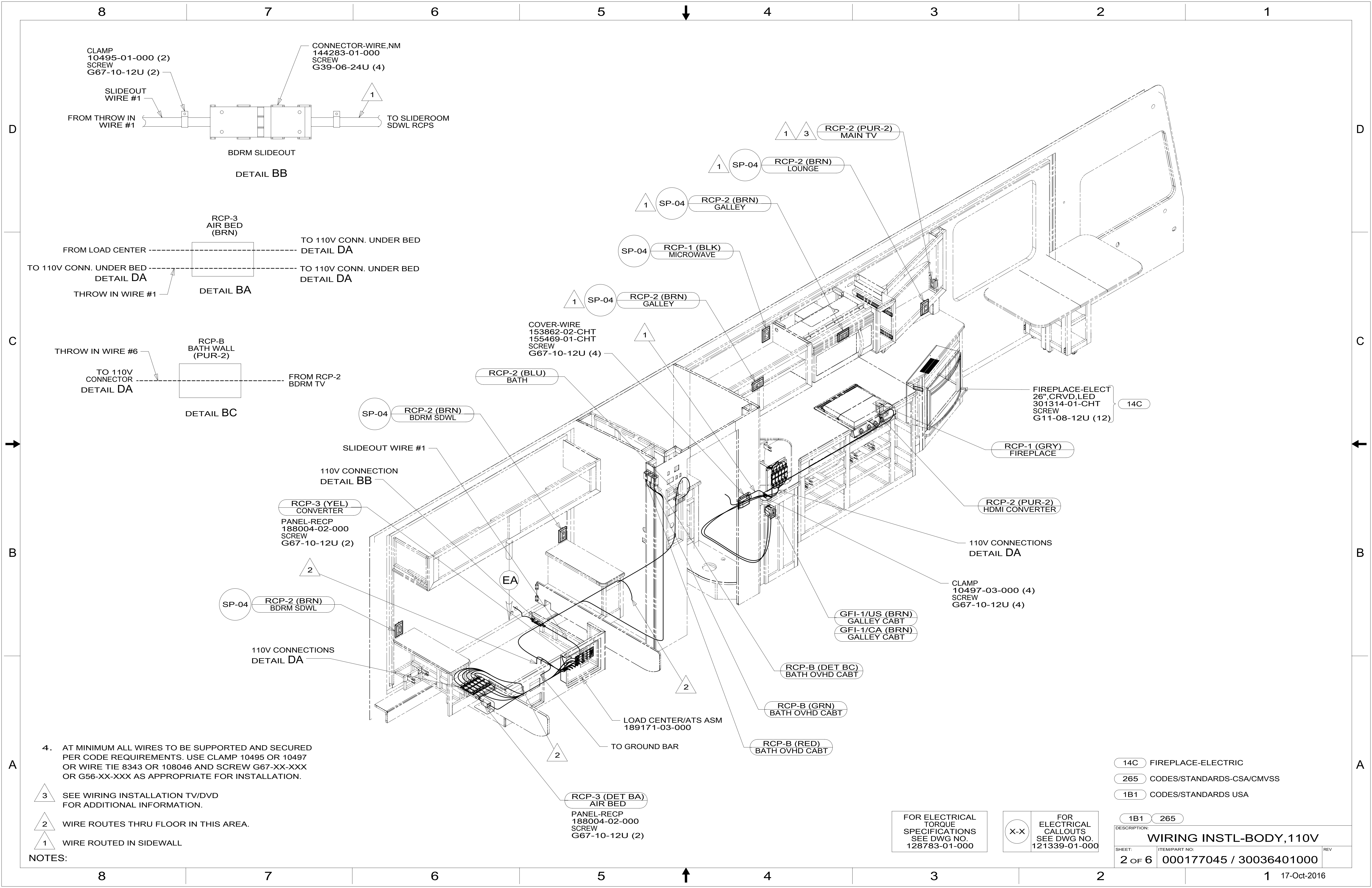
- 78J ELECTRICAL SYSTEM-50 AMP
- 401 INVERTER-DC/AC, 1000 WATT
- 265 CODES/STANDARDS-CSA/CMVSS
- 1B1 CODES/STANDARDS USA

WINNEBAGO
COPYRIGHT 2016 WINNEBAGO INDUSTRIES, INC.

DSNR:	ALL DIMENSIONS ARE IN MILLIMETERS
DFFR:	
UNSPECIFIED TOLERANCES:	MATERIAL:
WHOLE DIM (X) : 3	
ONE-PLACE (X.X) : 1.5	
TWO-PLACE (X.XX) : 0.50	
ANGLE : 1°	
REFER TO ES0018 FOR FASTENER TIGHTENING GUIDELINES	WEIGHT: (LBS) FIRST USED: 16 D35G
DESCRIPTION: WIRING INSTL-BODY, 110V	
SHEET: 1 OF 6	ITEM/PART NO: 000177045 / 30036401000
REF:	1 17-Oct-2016

FOR ELECTRICAL TORQUE SPECIFICATIONS SEE DWG NO. 128783-01-000

FOR ELECTRICAL CALLOUTS SEE DWG NO. 121339-01-000



4. AT MINIMUM ALL WIRES TO BE SUPPORTED AND SECURED PER CODE REQUIREMENTS. USE CLAMP 10495 OR 10497 OR WIRE TIE 8343 OR 108046 AND SCREW G67-XX-XXX OR G56-XX-XXX AS APPROPRIATE FOR INSTALLATION.

3 SEE WIRING INSTALLATION TV/DVD FOR ADDITIONAL INFORMATION.

2 WIRE ROUTES THRU FLOOR IN THIS AREA.

1 WIRE ROUTED IN SIDEWALL

NOTES:

COVER-WIRE
153862-02-CHT
155469-01-CHT
SCREW
G67-10-12U (4)

RCP-2 (BLU)
BATH

SP-04 RCP-2 (BRN)
BDRM SDWL

RCP-3 (YEL)
CONVERTER

PANEL-RECP
188004-02-000
SCREW
G67-10-12U (2)

SP-04 RCP-2 (BRN)
BDRM SDWL

110V CONNECTIONS
DETAIL DA

LOAD CENTER/ATS ASM
189171-03-000

RCP-3 (DET BA)
AIR BED

PANEL-RECP
188004-02-000
SCREW
G67-10-12U (2)

SP-04 RCP-1 (BLK)
MICROWAVE

SP-04 RCP-2 (BRN)
GALLEY

SP-04 RCP-2 (BRN)
LOUNGE

SP-04 RCP-2 (PUR-2)
MAIN TV

FIREPLACE-ELECT
26" CRVD,LED
301314-01-CHT
SCREW
G11-08-12U (12)

RCP-1 (GRY)
FIREPLACE

RCP-2 (PUR-2)
HDMI CONVERTER

110V CONNECTIONS
DETAIL DA

CLAMP
10497-03-000 (4)
SCREW
G67-10-12U (4)

GFI-1/US (BRN)
GALLEY CABT

GFI-1/CA (BRN)
GALLEY CABT

RCP-B (DET BC)
BATH OVHD CABT

RCP-B (GRN)
BATH OVHD CABT

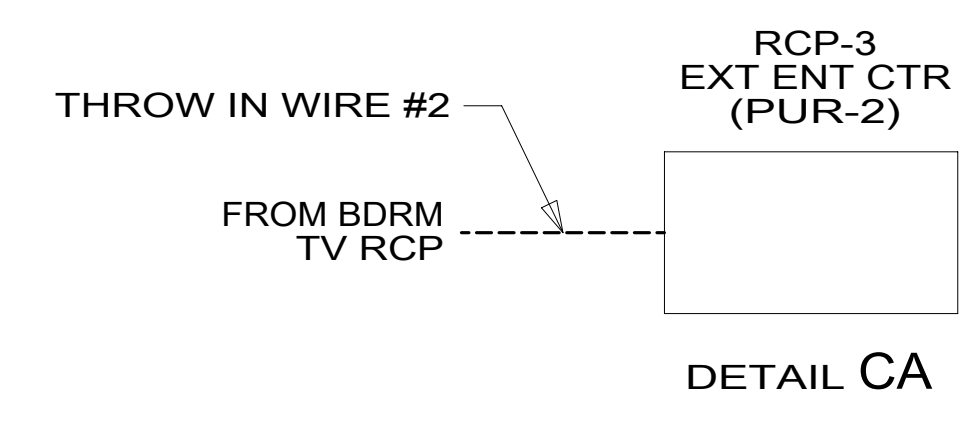
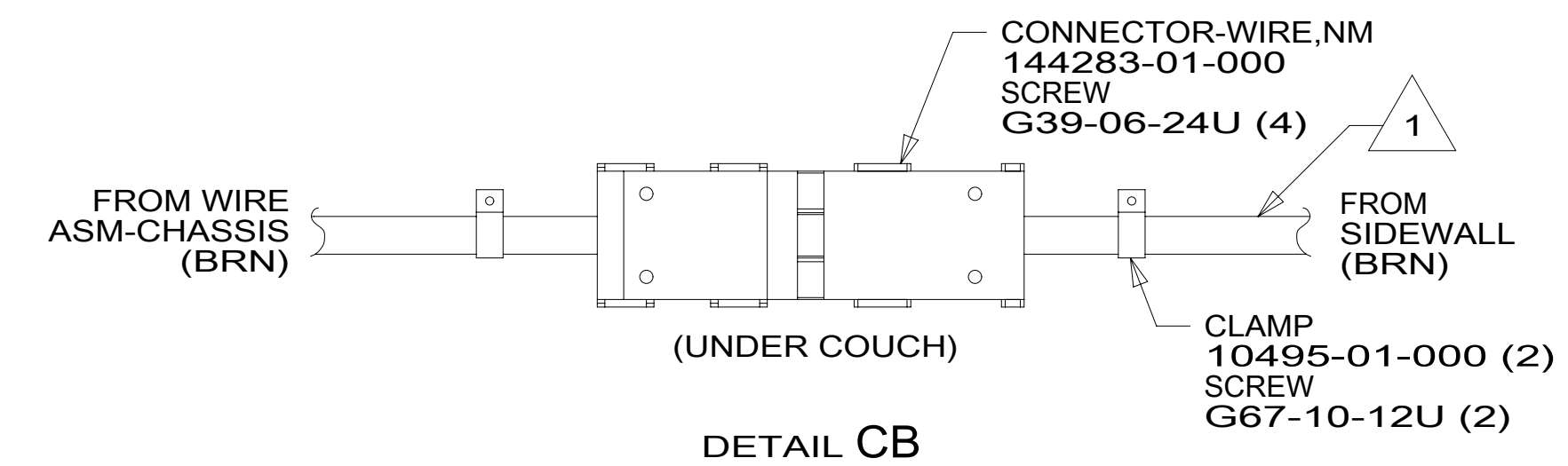
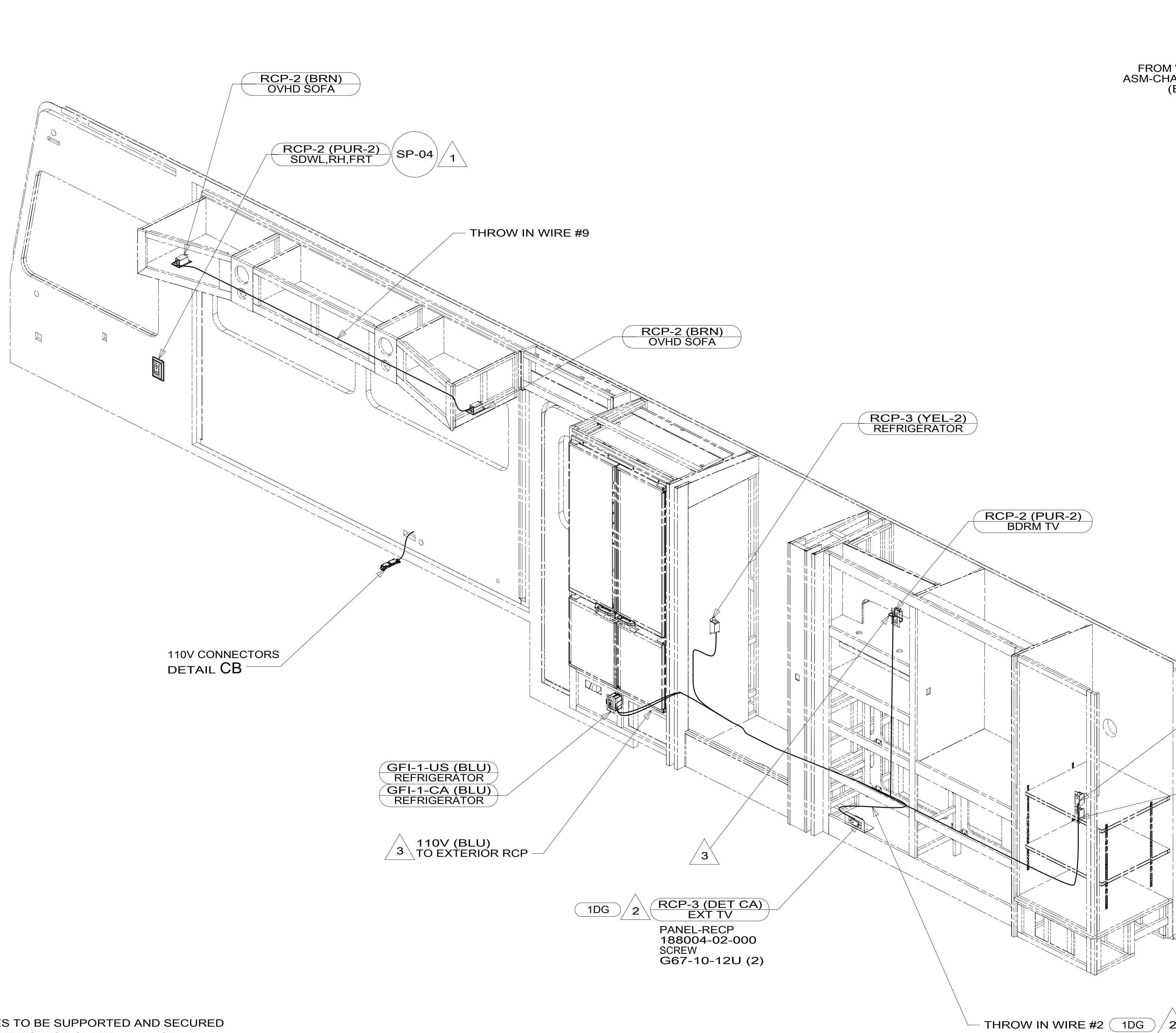
RCP-B (RED)
BATH OVHD CABT

- 14C FIREPLACE-ELECTRIC
- 265 CODES/STANDARDS-CSA/CMVSS
- 1B1 CODES/STANDARDS USA

FOR ELECTRICAL
TORQUE
SPECIFICATIONS
SEE DWG NO.
128783-01-000

FOR
ELECTRICAL
CALLOUTS
SEE DWG NO.
121339-01-000

DESCRIPTION: WIRING INSTL-BODY, 110V		
SHEET: 2 OF 6	ITEM/PART NO.: 000177045 / 30036401000	REV
17-Oct-2016		



4. AT MINIMUM ALL WIRES TO BE SUPPORTED AND SECURED PER CODE REQUIREMENTS. USE CLAMP 10495 OR 10497 OR WIRE TIE 8343 OR 108046 AND SCREW G67-XX-XXX OR G56-XX-XXX AS APPROPRIATE FOR INSTALLATION.

- 3 WIRES ROUTE THRU FLOOR IN THIS AREA.
- 2 SEE LOAD CENTER/ATS INSTALLATION FOR ADDITIONAL INFORMATION.
- 1 WIRE ROUTED IN SIDEWALL.

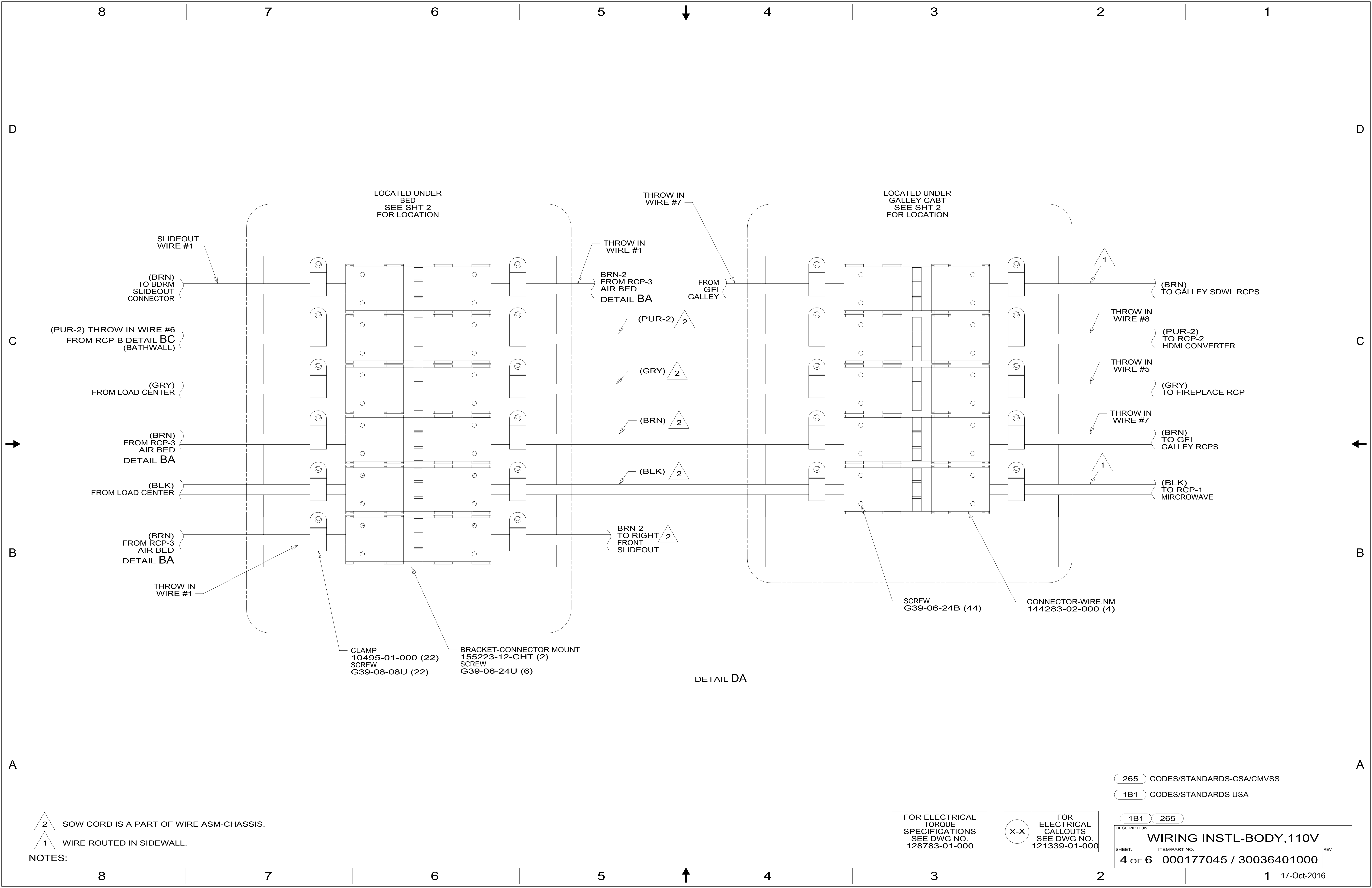
NOTES:

FOR ELECTRICAL TORQUE SPECIFICATIONS SEE DWG NO. 128783-01-000

FOR ELECTRICAL CALLOUTS SEE DWG NO. 121339-01-000

- 21M WASHER/DRYER PREP
- 1DG EXT ENTERTAIN CTR W/TV & CD
- 265 CODES/STANDARDS-CSA/CMVSS
- 1B1 CODES/STANDARDS USA

DESCRIPTION:	
WIRING INSTL-BODY, 110V	
SHEET:	ITEM/PART NO.:
3 OF 6	000177045 / 30036401000
REV	



LOCATED UNDER
BED
SEE SHT 2
FOR LOCATION

LOCATED UNDER
GALLEY CABT
SEE SHT 2
FOR LOCATION

SLIDEOUT
WIRE #1

THROW IN
WIRE #7

THROW IN
WIRE #1

BRN-2
FROM RCP-3
AIR BED
DETAIL BA

FROM
GFI
GALLEY

(PUR-2) 2

(GRY) 2

(BRN) 2

(BLK) 2

BRN-2
TO RIGHT
FRONT
SLIDEOUT 2

CLAMP
10495-01-000 (22)
SCREW
G39-08-08U (22)

BRACKET-CONNECTOR MOUNT
155223-12-CHT (2)
SCREW
G39-06-24U (6)

DETAIL DA

SCREW
G39-06-24B (44)

CONNECTOR-WIRE,NM
144283-02-000 (4)

(BRN)
TO BDRM
SLIDEOUT
CONNECTOR

(PUR-2) THROW IN WIRE #6
FROM RCP-B DETAIL BC
(BATHWALL)

(GRY)
FROM LOAD CENTER

(BRN)
FROM RCP-3
AIR BED
DETAIL BA

(BLK)
FROM LOAD CENTER

(BRN)
FROM RCP-3
AIR BED
DETAIL BA

THROW IN
WIRE #1

(BRN)
TO GALLEY SDWL RCPS

(PUR-2)
TO RCP-2
HDMI CONVERTER

(GRY)
TO FIREPLACE RCP

(BRN)
TO GFI
GALLEY RCPS

(BLK)
TO RCP-1
MIRCROWAVE

265 CODES/STANDARDS-CSA/CMVSS

1B1 CODES/STANDARDS USA

1B1 265

FOR ELECTRICAL
TORQUE
SPECIFICATIONS
SEE DWG NO.
128783-01-000

X-X

FOR
ELECTRICAL
CALLOUTS
SEE DWG NO.
121339-01-000

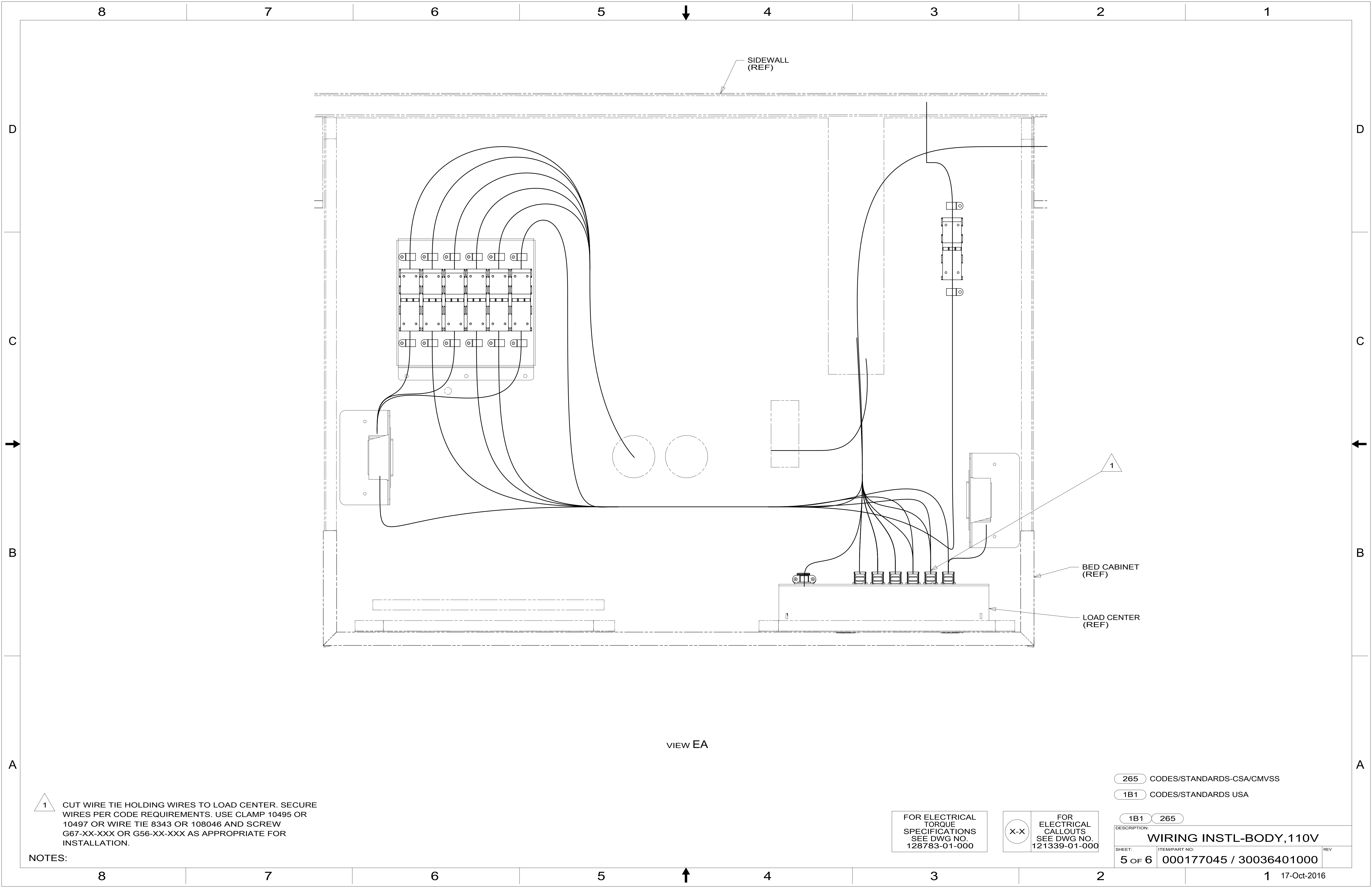
DESCRIPTION:
WIRING INSTL-BODY, 110V

SHEET: 4 OF 6 ITEM/PART NO: 000177045 / 30036401000 REV

2 SOW CORD IS A PART OF WIRE ASM-CHASSIS.

1 WIRE ROUTED IN SIDEWALL.

NOTES:



VIEW EA

1 CUT WIRE TIE HOLDING WIRES TO LOAD CENTER. SECURE WIRES PER CODE REQUIREMENTS. USE CLAMP 10495 OR 10497 OR WIRE TIE 8343 OR 108046 AND SCREW G67-XX-XXX OR G56-XX-XXX AS APPROPRIATE FOR INSTALLATION.

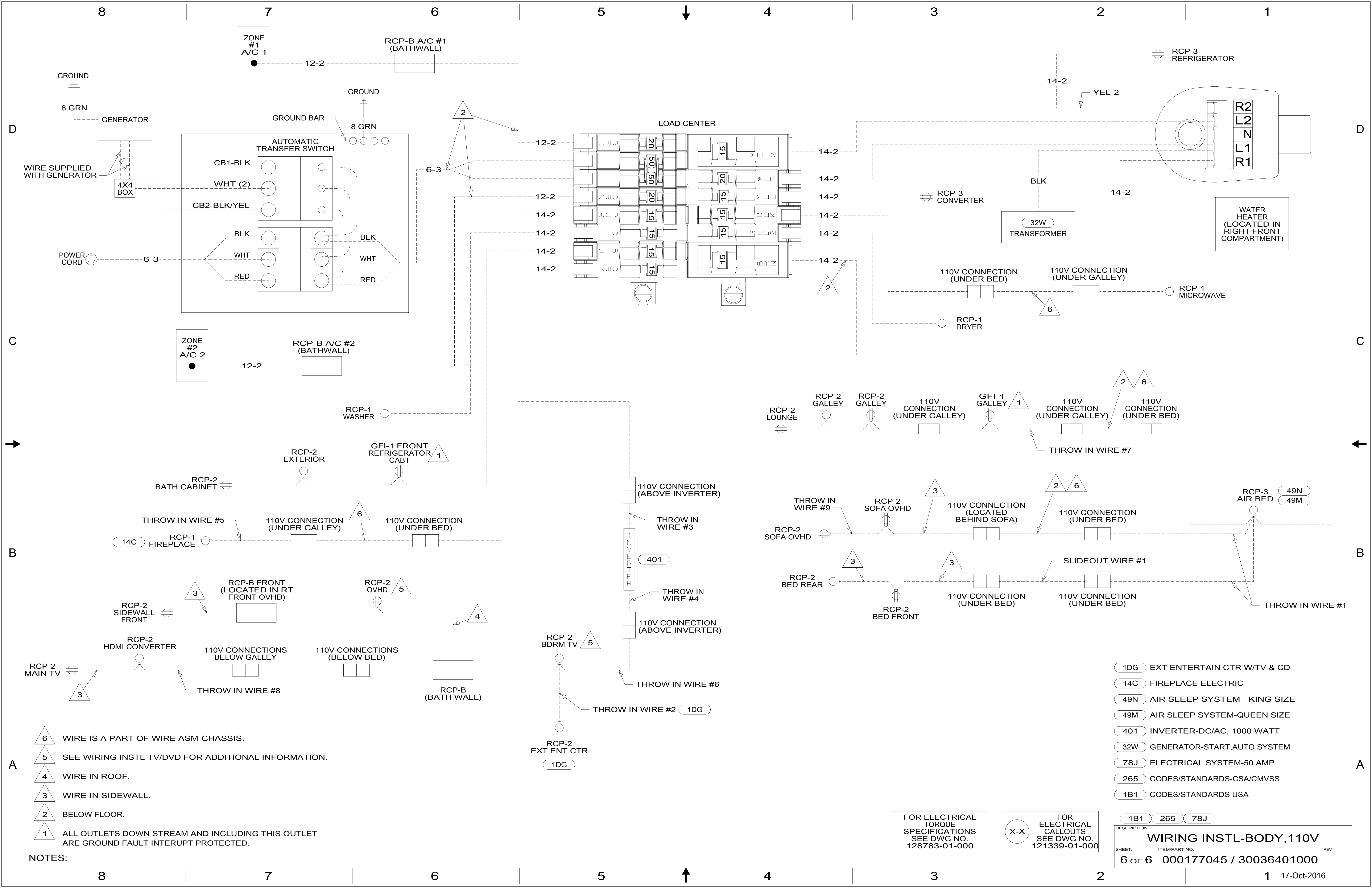
NOTES:

FOR ELECTRICAL TORQUE SPECIFICATIONS SEE DWG NO. 128783-01-000

FOR ELECTRICAL CALLOUTS SEE DWG NO. 121339-01-000

- 265 CODES/STANDARDS-CSA/CMVSS
- 1B1 CODES/STANDARDS USA

DESCRIPTION:	
WIRING INSTL-BODY, 110V	
SHEET:	ITEM/PART NO. REV
5 OF 6	000177045 / 30036401000



- NOTES:
- ▲ 6 WIRE IS A PART OF WIRE ASM-CHASSIS.
 - ▲ 5 SEE WIRING INSTL-TV/DVD FOR ADDITIONAL INFORMATION.
 - ▲ 4 WIRE IN ROOF.
 - ▲ 3 WIRE IN SIDEWALL.
 - ▲ 2 BELOW FLOOR.
 - ▲ 1 ALL OUTLETS DOWN STREAM AND INCLUDING THIS OUTLET ARE GROUND FAULT INTERRUPT PROTECTED.

- 1DG EXT ENTERTAIN CTR W/TV & CD
- 14C FIREPLACE-ELECTRIC
- 49N AIR SLEEP SYSTEM - KING SIZE
- 49M AIR SLEEP SYSTEM-QUEEN SIZE
- 401 INVERTER-DC/AC, 1000 WATT
- 32W GENERATOR-START.AUTO SYSTEM
- 78J ELECTRICAL SYSTEM-50 AMP
- 265 CODES/STANDARDS-CSA/CMVSS
- 1B1 CODES/STANDARDS USA

FOR ELECTRICAL TORQUE SPECIFICATIONS SEE DWG NO. 128783-01-000

FOR ELECTRICAL CALLOUTS SEE DWG NO. 121339-01-000

DESCRIPTION: WIRING INSTL-BODY, 110V		
SHEET: 6 OF 6	ITEM/PART NO.: 000177045 / 30036401000	REV
17-Oct-2016		