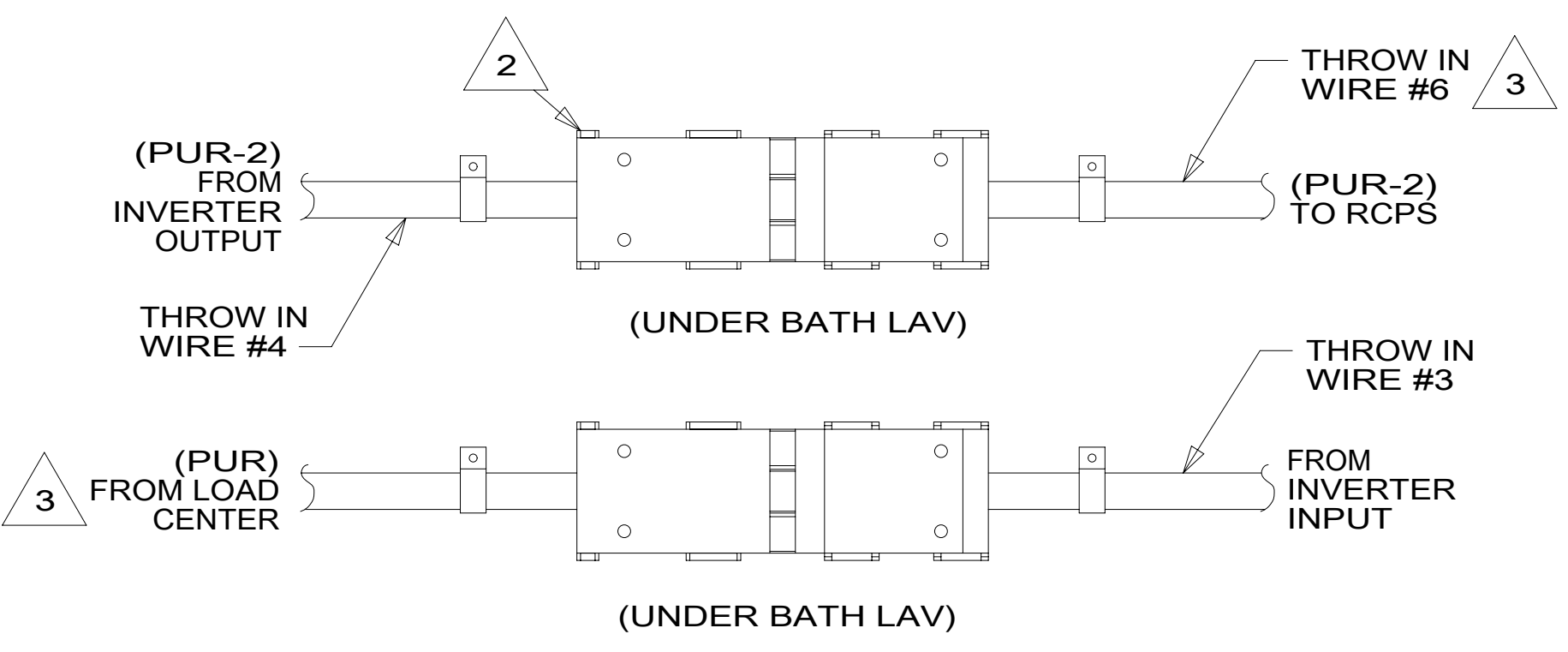
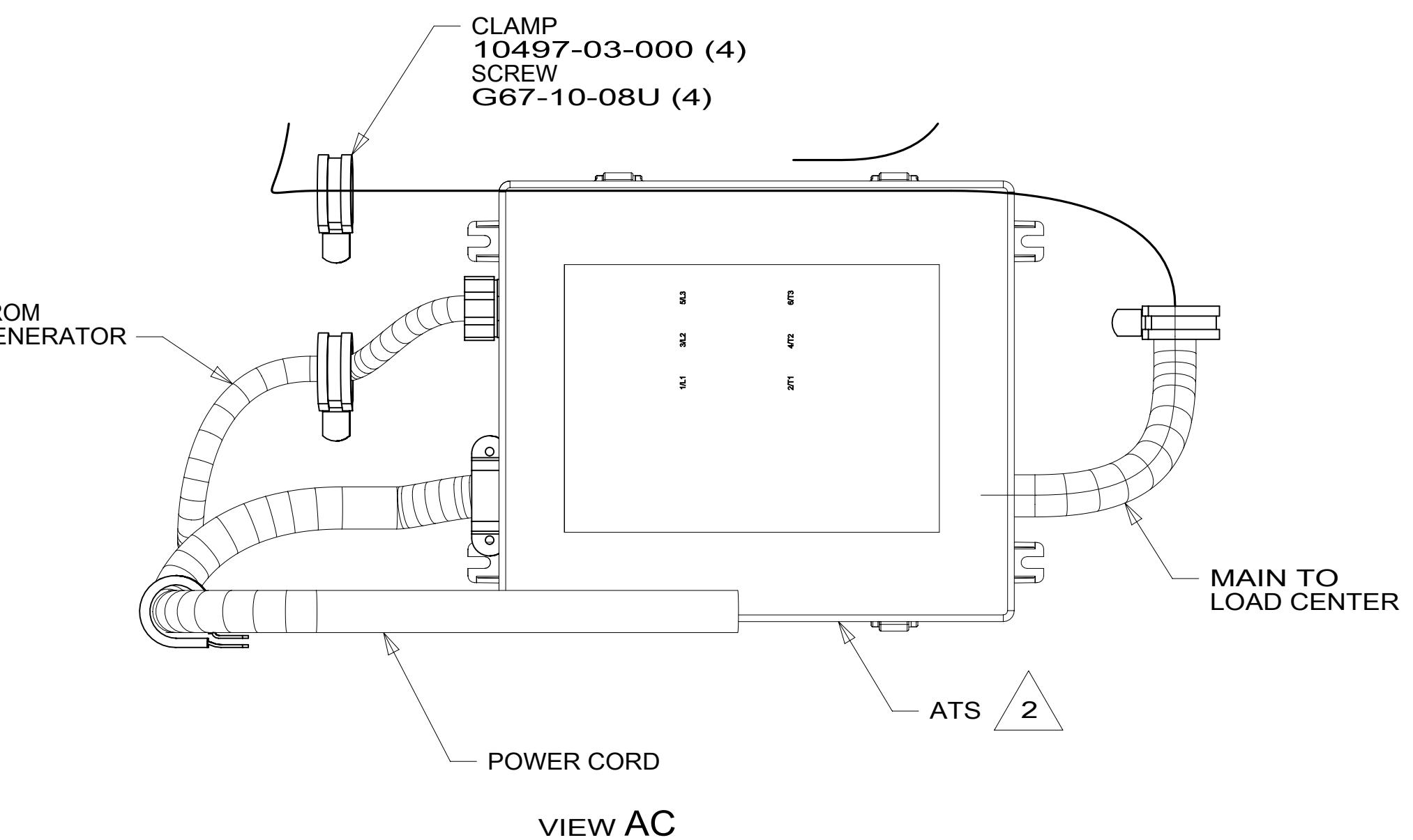


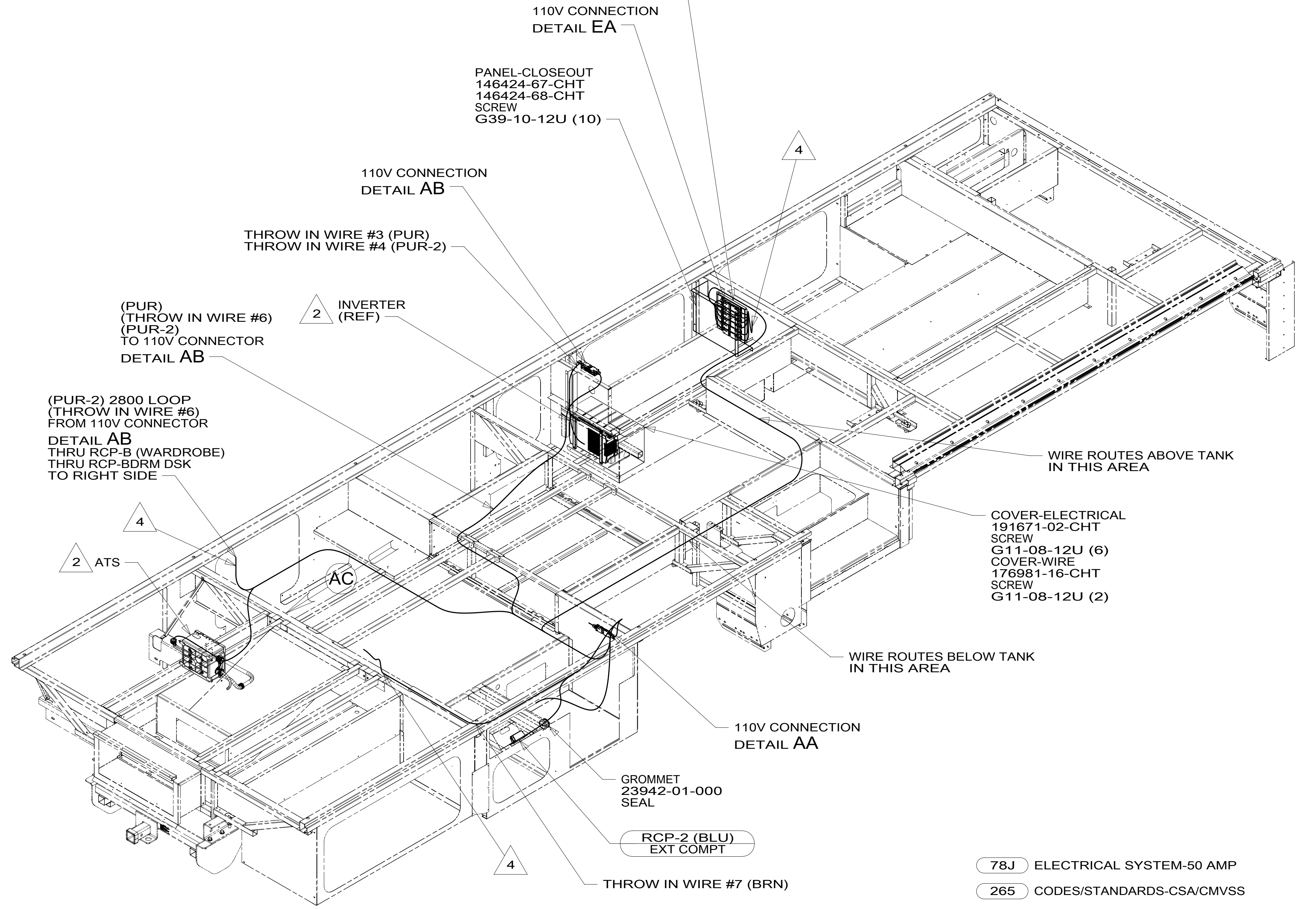
DRAWING NO.	FEATURE
300334-12	1B1 78J
300334-16	265 78J



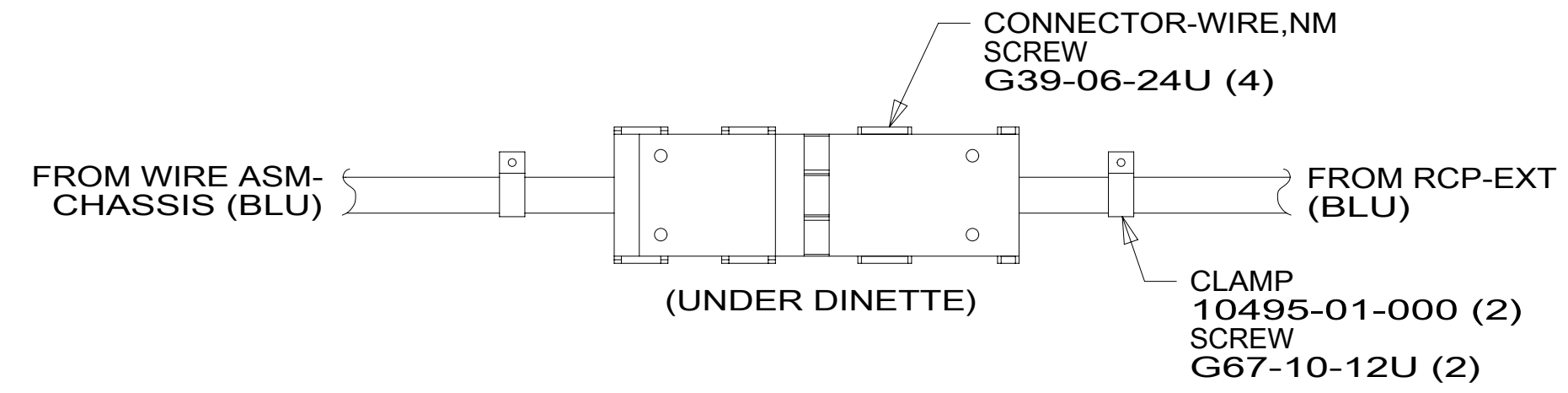
DETAIL AB



VIEW AC



DETAIL AA



FOR ELECTRICAL TORQUE SPECIFICATIONS SEE DWG NO. 128783-01-000

FOR ELECTRICAL CALLOUTS SEE DWG NO. 121339-01-000

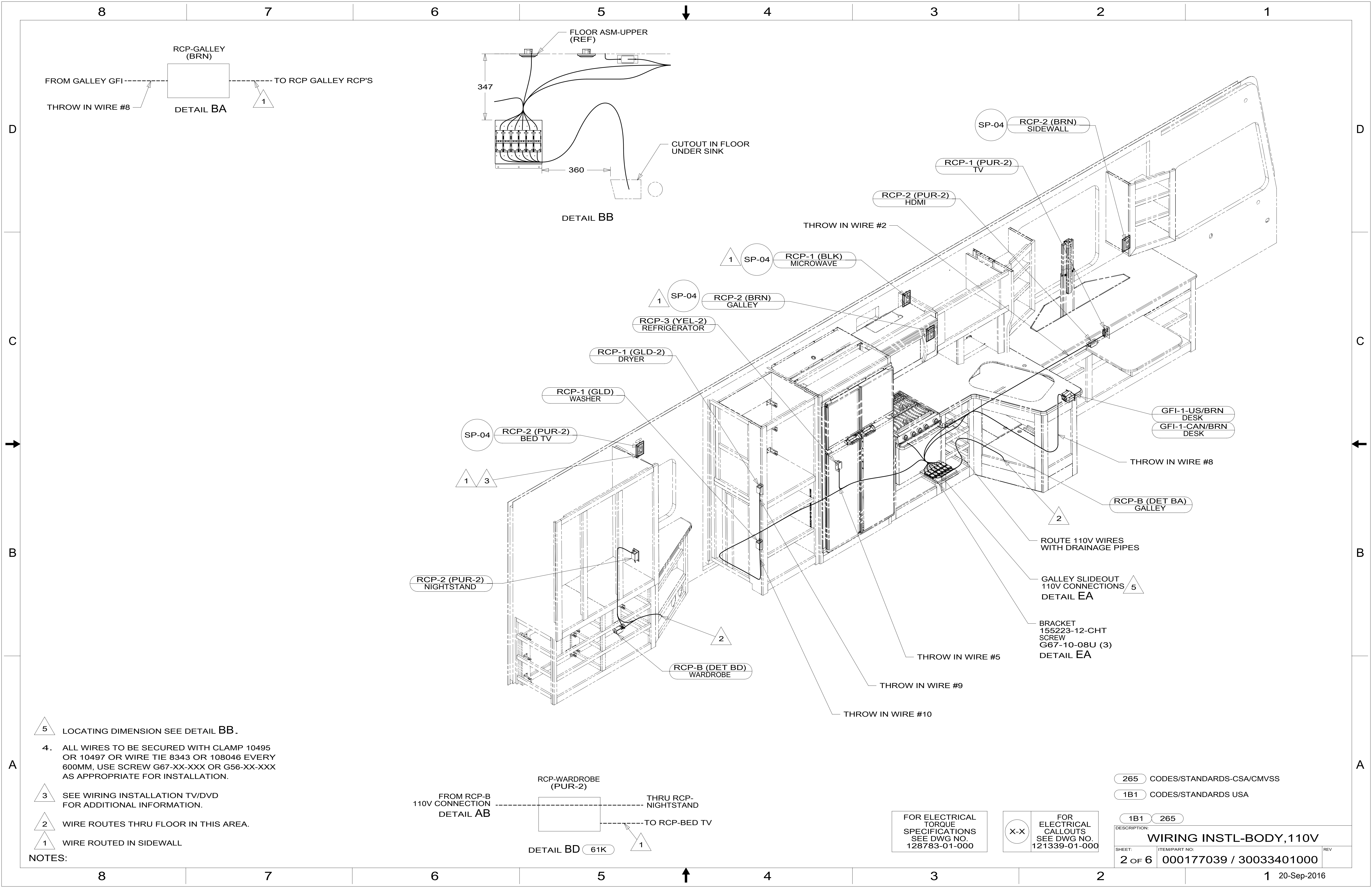
- 78J ELECTRICAL SYSTEM-50 AMP
- 265 CODES/STANDARDS-CSA/CMVSS
- 1B1 CODES/STANDARDS USA

1B1 265

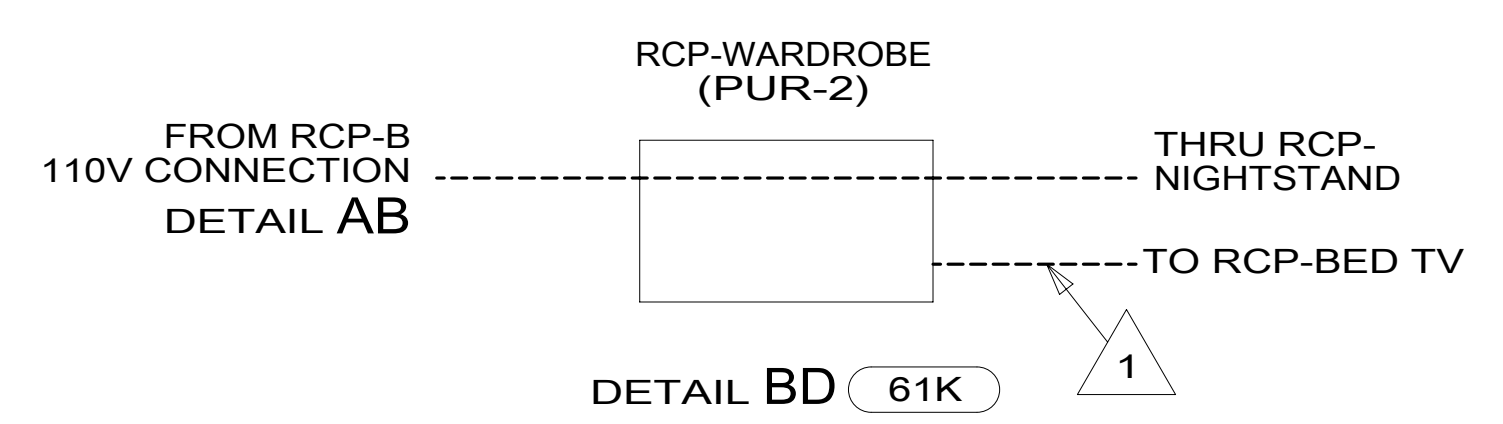


DSNR:	ALL DIMENSIONS ARE IN MILLIMETERS	
DFFR:		
UNSPECIFIED TOLERANCES:	MATERIAL:	
WHOLE DIM (X) : 3		
ONE-PLACE (X.X) : 1.5		
TWO-PLACE (X.XX) : 0.50		
ANGLE : 1°		
REFER TO ES0018 FOR FASTENER TIGHTENING GUIDELINES	WEIGHT: (LBS)	FIRST USED: 16 D33C
DESCRIPTION: WIRING INSTL-BODY, 110V		
SHEET: 1 OF 6	ITEM/PART NO: 000177039 / 30033401000	REV:

- NOTES:
5. ALL WIRES TO BE SECURED WITH CLAMP 10495 OR 10497 OR WIRE TIE 8343 OR 108046 EVERY 600MM, USE SCREW G67-XX-XXX OR G56-XX-XXX AS APPROPRIATE FOR INSTALLATION.
 - 4 WIRE ROUTED THROUGH FLOOR IN THIS AREA.
 - 3 WITHOUT INVERTER THROW IN #2 (PUR-2) CONNECTS TO (PUR) FROM LOAD CENTER.
 - 2 SEE LOAD CENTER/ATS ASM FOR ADDITIONAL INFORMATION.
 1. WIRES ROUTED UNDER FLOOR.



- NOTES:
- 5 LOCATING DIMENSION SEE DETAIL BB.
 - 4. ALL WIRES TO BE SECURED WITH CLAMP 10495 OR 10497 OR WIRE TIE 8343 OR 108046 EVERY 600MM, USE SCREW G67-XX-XXX OR G56-XX-XXX AS APPROPRIATE FOR INSTALLATION.
 - 3 SEE WIRING INSTALLATION TV/DVD FOR ADDITIONAL INFORMATION.
 - 2 WIRE ROUTES THRU FLOOR IN THIS AREA.
 - 1 WIRE ROUTED IN SIDEWALL

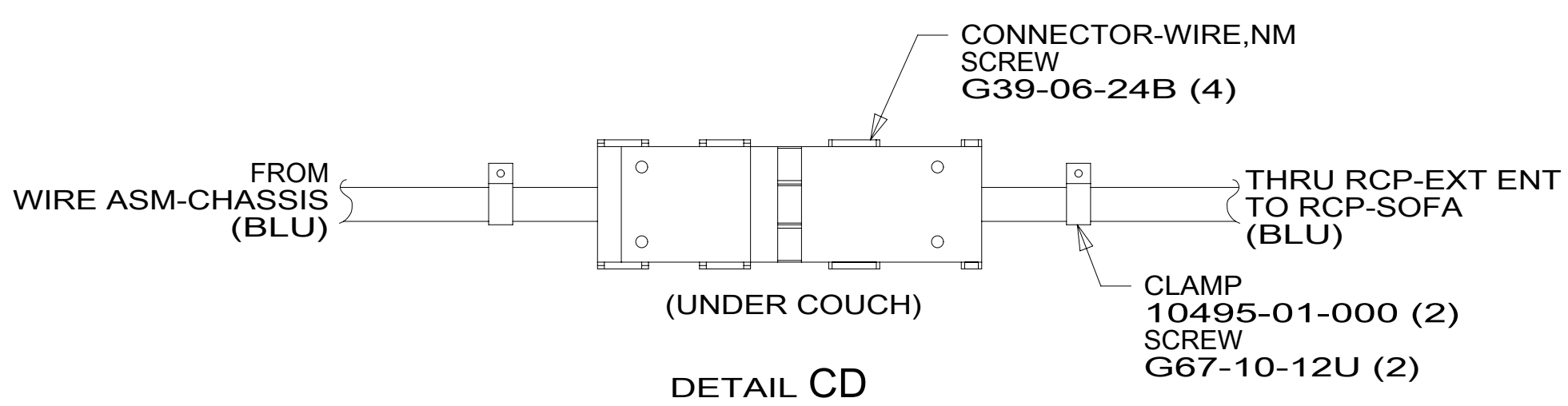
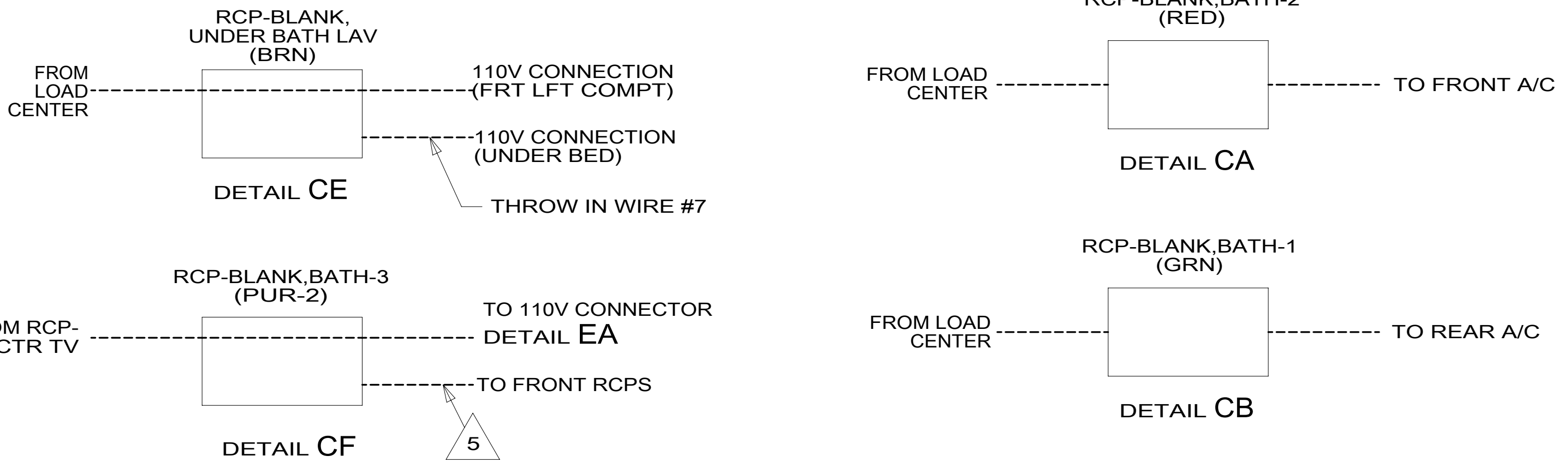
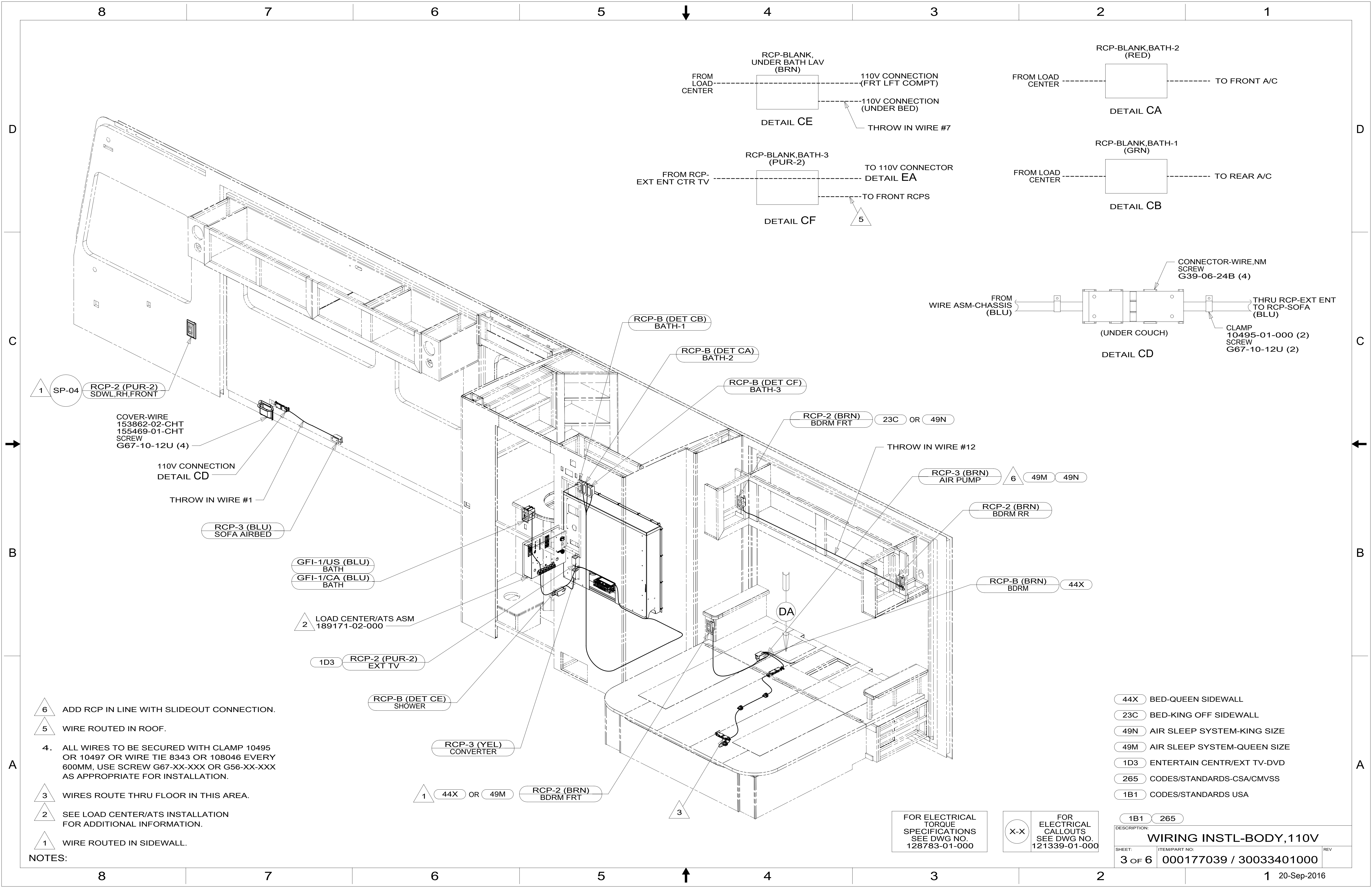


FOR ELECTRICAL TORQUE SPECIFICATIONS SEE DWG NO. 128783-01-000

FOR ELECTRICAL CALLOUTS SEE DWG NO. 121339-01-000

- 265 CODES/STANDARDS-CSA/CMVSS
- 1B1 CODES/STANDARDS USA

DESCRIPTION:	
WIRING INSTL-BODY, 110V	
SHEET:	ITEM/PART NO.:
2 OF 6	000177039 / 30033401000
REV	



1 SP-04 RCP-2 (PUR-2) SDWL, RH, FRONT

COVER-WIRE 153862-02-CHT 155469-01-CHT SCREW G67-10-12U (4)

110V CONNECTION DETAIL CD

THROW IN WIRE #1

RCP-3 (BLU) SOFA AIRBED

GFI-1/US (BLU) BATH
GFI-1/CA (BLU) BATH

2 LOAD CENTER/ATS ASM 189171-02-000

1D3 RCP-2 (PUR-2) EXT TV

RCP-B (DET CE) SHOWER

RCP-3 (YEL) CONVERTER

1 44X OR 49M RCP-2 (BRN) BDRM FRT

RCP-B (DET CB) BATH-1

RCP-B (DET CA) BATH-2

RCP-B (DET CF) BATH-3

RCP-2 (BRN) BDRM FRT 23C OR 49N

THROW IN WIRE #12

RCP-3 (BRN) AIR PUMP 6 49M 49N

RCP-2 (BRN) BDRM RR

RCP-B (BRN) BDRM 44X

6 ADD RCP IN LINE WITH SLIDEOUT CONNECTION.

5 WIRE ROUTED IN ROOF.

4. ALL WIRES TO BE SECURED WITH CLAMP 10495 OR 10497 OR WIRE TIE 8343 OR 108046 EVERY 600MM, USE SCREW G67-XX-XXX OR G56-XX-XXX AS APPROPRIATE FOR INSTALLATION.

3 WIRES ROUTE THRU FLOOR IN THIS AREA.

2 SEE LOAD CENTER/ATS INSTALLATION FOR ADDITIONAL INFORMATION.

1 WIRE ROUTED IN SIDEWALL.

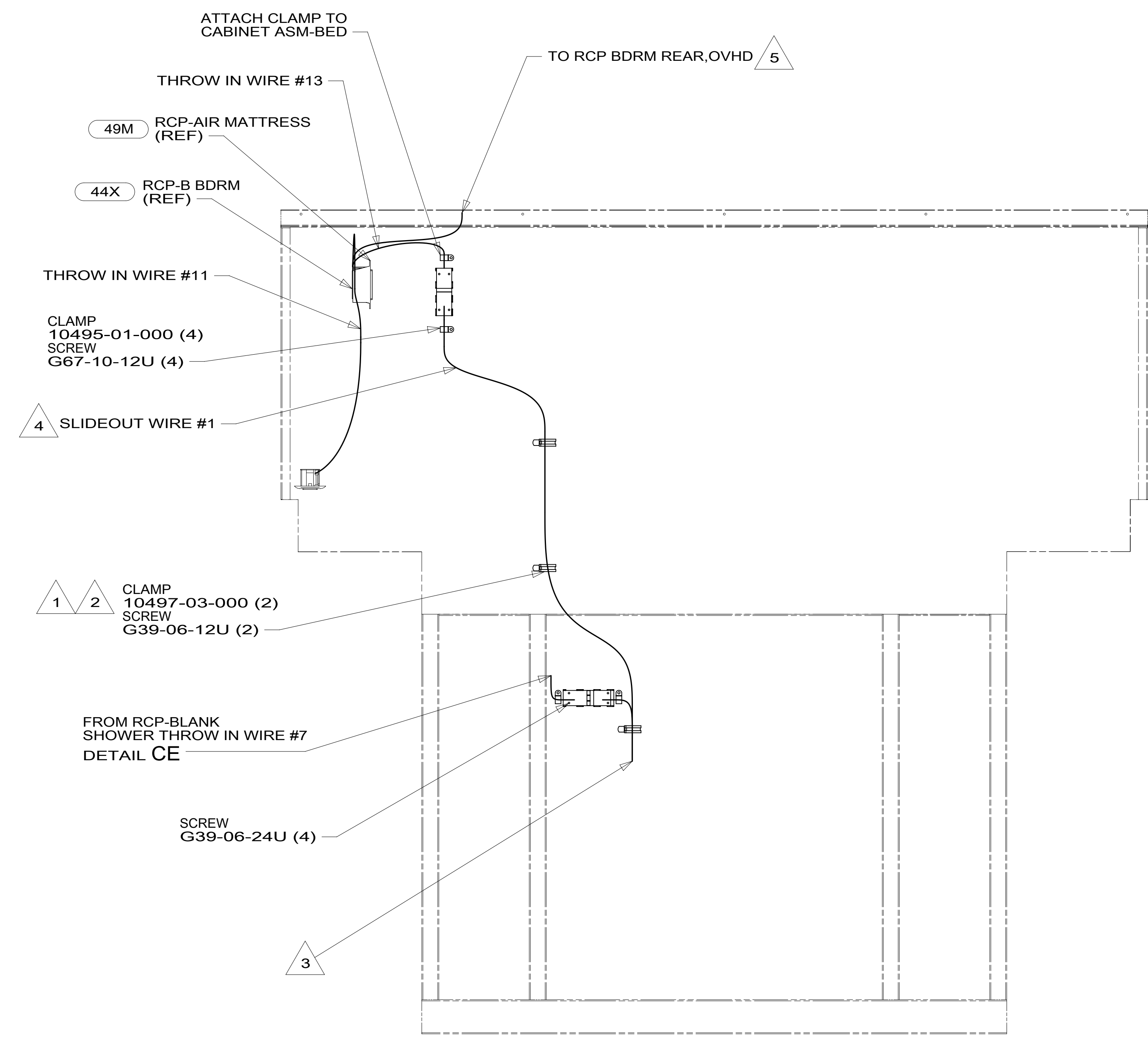
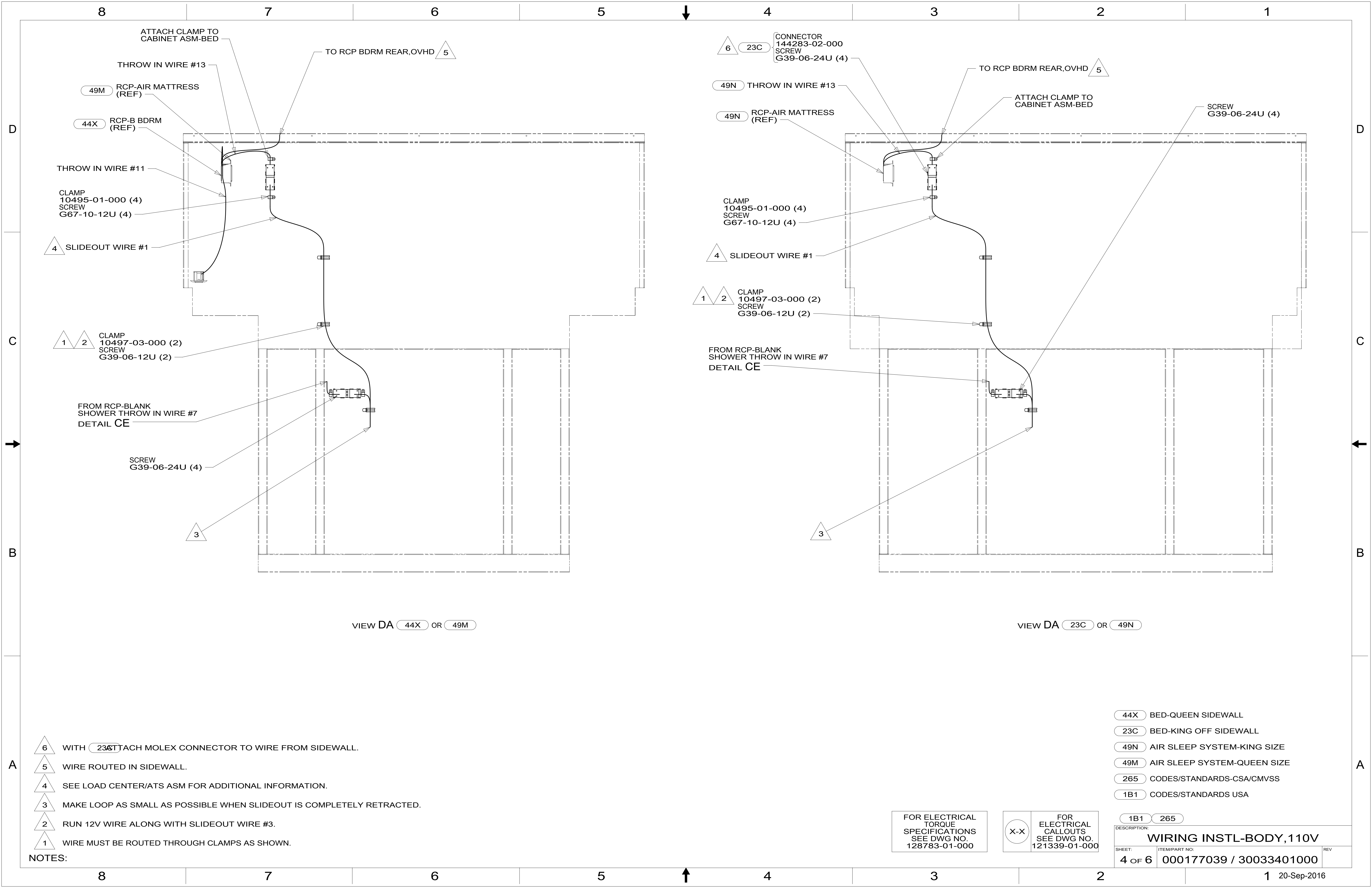
NOTES:

FOR ELECTRICAL TORQUE SPECIFICATIONS SEE DWG NO. 128783-01-000

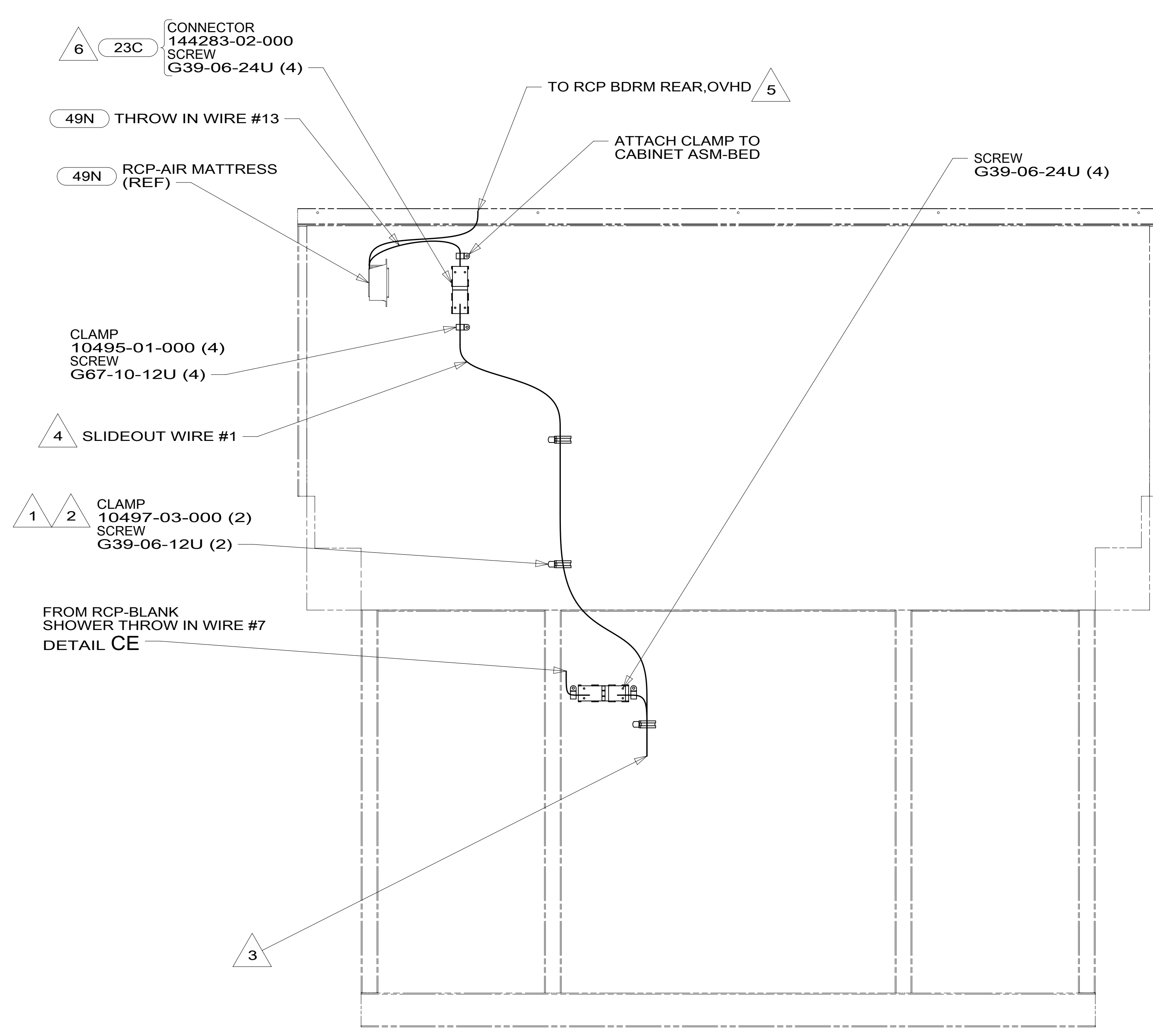
FOR ELECTRICAL CALLOUTS SEE DWG NO. 121339-01-000

- 44X BED-QUEEN SIDEWALL
- 23C BED-KING OFF SIDEWALL
- 49N AIR SLEEP SYSTEM-KING SIZE
- 49M AIR SLEEP SYSTEM-QUEEN SIZE
- 1D3 ENTERTAIN CENTR/EXT TV-DVD
- 265 CODES/STANDARDS-CSA/CMVSS
- 1B1 CODES/STANDARDS USA

DESCRIPTION:		1B1 265	
WIRING INSTL-BODY, 110V			
SHEET:	ITEM/PART NO.:	REV:	
3 OF 6	000177039 / 30033401000		



VIEW DA 44X OR 49M



VIEW DA 23C OR 49N

- NOTES:
- 6 WITH 23C ATTACH MOLEX CONNECTOR TO WIRE FROM SIDEWALL.
 - 5 WIRE ROUTED IN SIDEWALL.
 - 4 SEE LOAD CENTER/ATS ASM FOR ADDITIONAL INFORMATION.
 - 3 MAKE LOOP AS SMALL AS POSSIBLE WHEN SLIDEOUT IS COMPLETELY RETRACTED.
 - 2 RUN 12V WIRE ALONG WITH SLIDEOUT WIRE #3.
 - 1 WIRE MUST BE ROUTED THROUGH CLAMPS AS SHOWN.

- 44X BED-QUEEN SIDEWALL
- 23C BED-KING OFF SIDEWALL
- 49N AIR SLEEP SYSTEM-KING SIZE
- 49M AIR SLEEP SYSTEM-QUEEN SIZE
- 265 CODES/STANDARDS-CSA/CMVSS
- 1B1 CODES/STANDARDS USA

FOR ELECTRICAL TORQUE SPECIFICATIONS SEE DWG NO. 128783-01-000

X-X

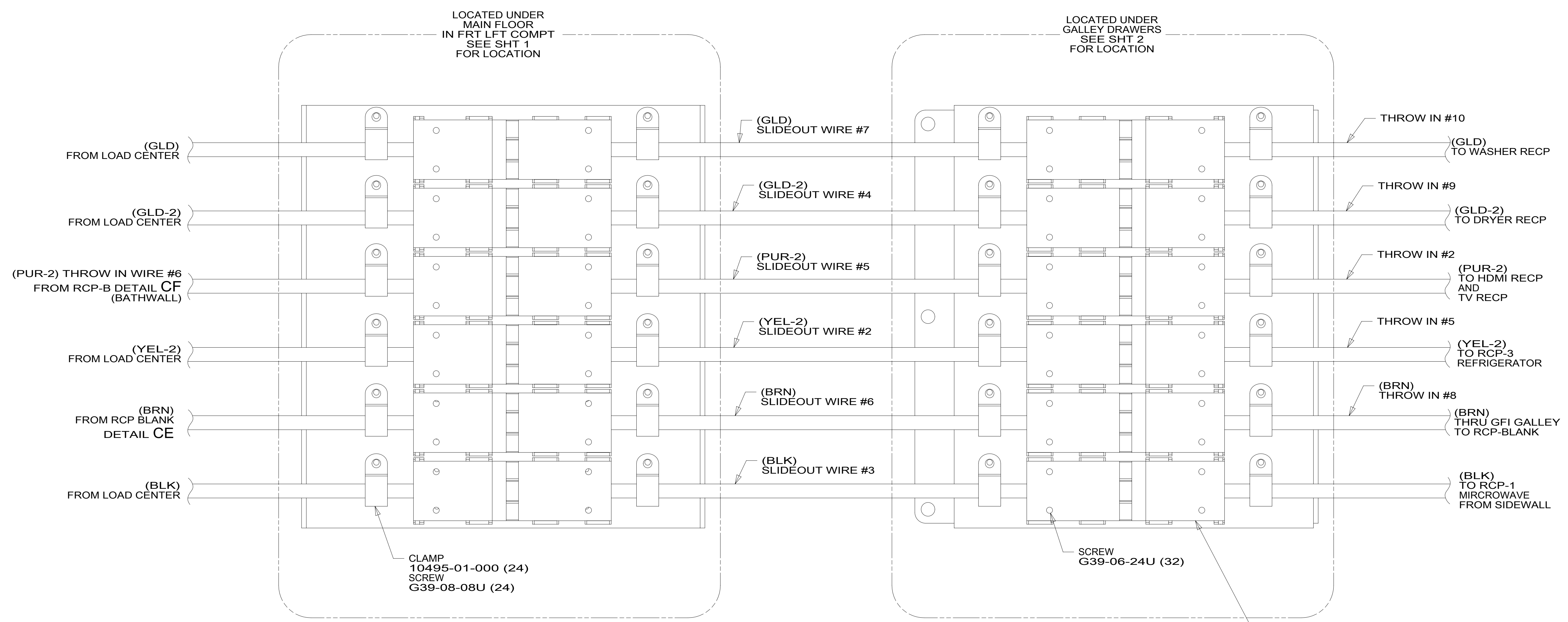
FOR ELECTRICAL CALLOUTS SEE DWG NO. 121339-01-000

DESCRIPTION:		1B1 265
WIRING INSTL-BODY, 110V		
SHEET:	ITEM/PART NO.:	REV
4 OF 6	000177039 / 30033401000	

8 7 6 5 4 3 2 1

D
C
B
A

D
C
B
A



DETAIL EA

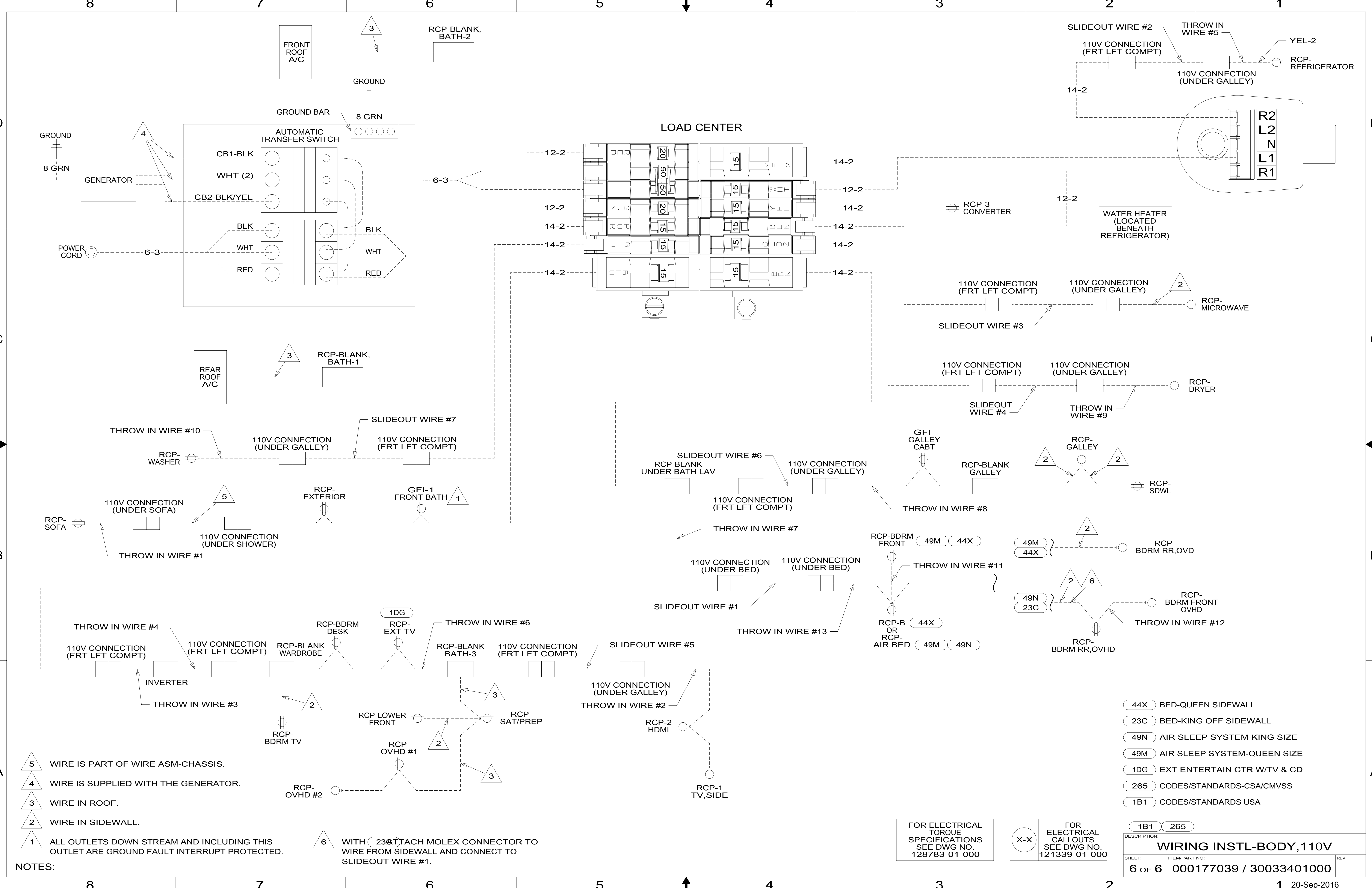
- 265 CODES/STANDARDS-CSA/CMVSS
- 1B1 CODES/STANDARDS USA

FOR ELECTRICAL TORQUE SPECIFICATIONS SEE DWG NO. 128783-01-000

FOR ELECTRICAL CALLOUTS SEE DWG NO. 121339-01-000

DESCRIPTION:	
WIRING INSTL-BODY, 110V	
SHEET:	ITEM/PART NO. REV
5 OF 6	000177039 / 30033401000

8 7 6 5 4 3 2 1 20-Sep-2016



- NOTES:
- △ 5 WIRE IS PART OF WIRE ASM-CHASSIS.
 - △ 4 WIRE IS SUPPLIED WITH THE GENERATOR.
 - △ 3 WIRE IN ROOF.
 - △ 2 WIRE IN SIDEWALL.
 - △ 1 ALL OUTLETS DOWN STREAM AND INCLUDING THIS OUTLET ARE GROUND FAULT INTERRUPT PROTECTED.

△ 6 WITH 23ATTACH MOLEX CONNECTOR TO WIRE FROM SIDEWALL AND CONNECT TO SLIDEOUT WIRE #1.

FOR ELECTRICAL TORQUE SPECIFICATIONS SEE DWG NO. 128783-01-000

FOR ELECTRICAL CALLOUTS SEE DWG NO. 121339-01-000

- (44X) BED-QUEEN SIDEWALL
- (23C) BED-KING OFF SIDEWALL
- (49N) AIR SLEEP SYSTEM-KING SIZE
- (49M) AIR SLEEP SYSTEM-QUEEN SIZE
- (1DG) EXT ENTERTAIN CTR W/TV & CD
- (265) CODES/STANDARDS-CSA/CMVSS
- (1B1) CODES/STANDARDS USA

DESCRIPTION: WIRING INSTL-BODY, 110V		
SHEET:	ITEM/PART NO.:	REV:
6 OF 6	000177039 / 30033401000	