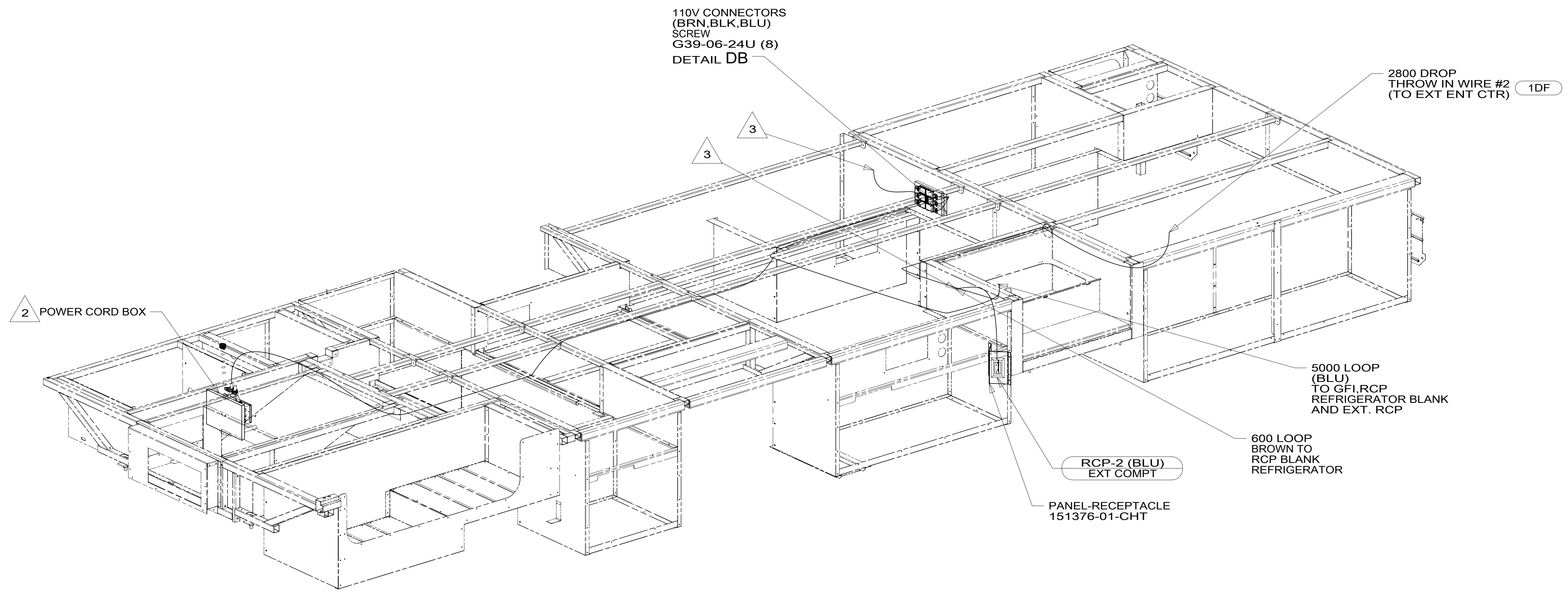


DRAWING NO.	FEATURE
300138-01	-----
300138-11	1B1 12D
300138-15	265 12D



- 1DF EXT TV ENTERTAINMENT CENTER
- 12D ELECTRICAL SYSTEM 30 AMP
- 265 CODES/STANDARDS-CSA/CMVSS
- 1B1 CODES/STANDARDS USA

1B1 265



DSNR:		ALL DIMENSIONS ARE IN MILLIMETERS	
DFFR:		MATERIAL:	
UNSPECIFIED TOLERANCES:			
WHOLE DIM (X)	3		
ONE-PLACE (X.X)	1.5		
TWO-PLACE (X.XX)	0.50		
ANGLE	1°		
REFER TO ES0018 FOR FASTENER TIGHTENING GUIDELINES		WEIGHT: (LBS)	FIRST USED:

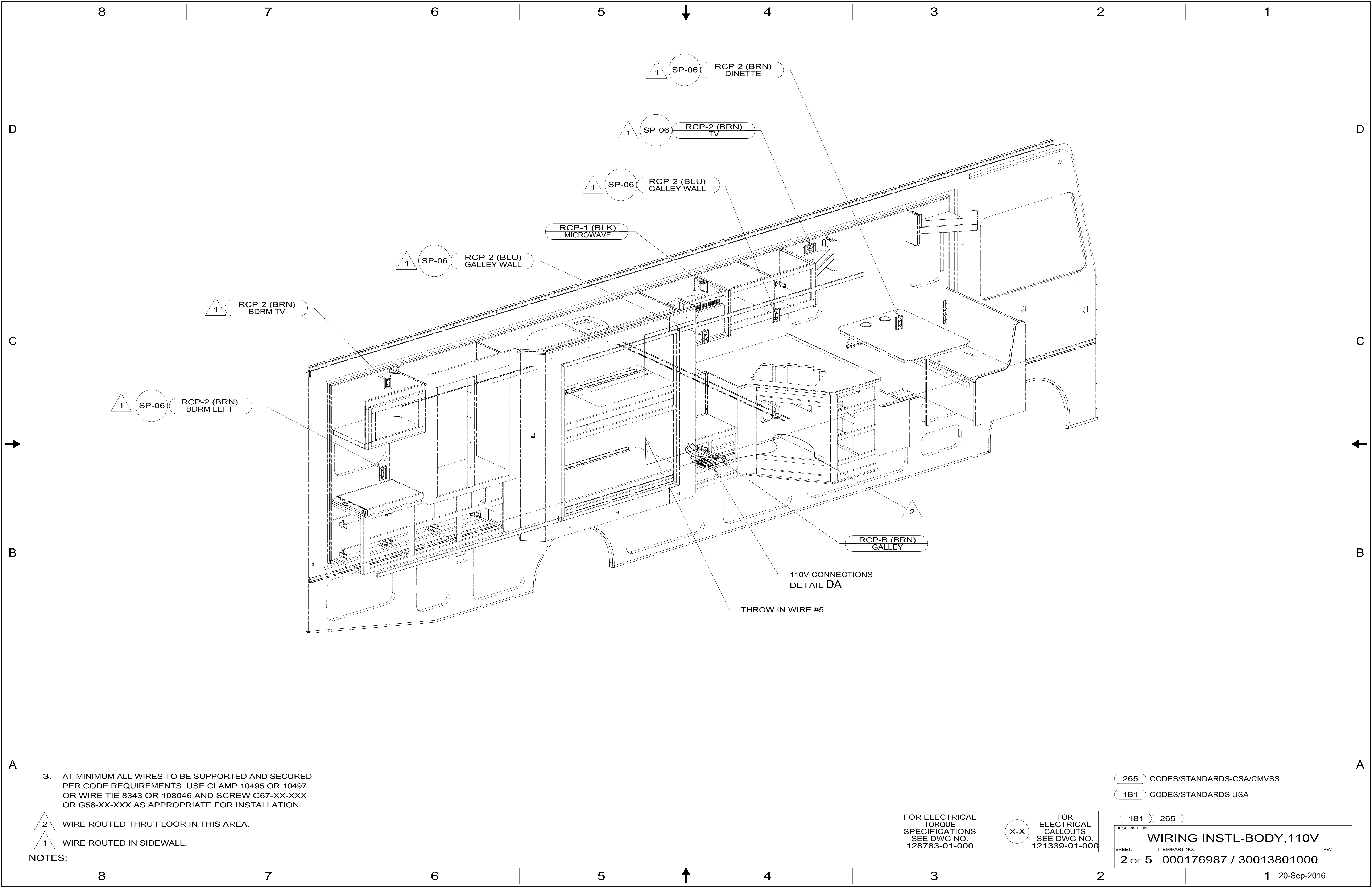
**WIRING INSTL-BODY, 110V**

SHEET:	ITEM/PART NO.:	REV:
1 OF 5	000176987 / 30013801000	

- NOTES:
1. WIRES ROUTED UNDER FLOOR.
  2. SEE LOAD CENTER/ATS FOR ADDITIONAL INFORMATION.
  3. WIRE ROUTED THROUGH FLOOR IN THIS AREA.
  4. AT MINIMUM ALL WIRES TO BE SUPPORTED AND SECURED PER CODE REQUIREMENTS. USE CLAMP 10495 OR 10497 OR WIRE TIE 8343 OR 108046 AND SCREW G67-XX-XXX OR G56-XX-XXX AS APPROPRIATE FOR INSTALLATION.

FOR ELECTRICAL TORQUE SPECIFICATIONS SEE DWG NO. 128783-01-000

FOR ELECTRICAL CALLOUTS SEE DWG NO. 121339-01-000



3. AT MINIMUM ALL WIRES TO BE SUPPORTED AND SECURED PER CODE REQUIREMENTS. USE CLAMP 10495 OR 10497 OR WIRE TIE 8343 OR 108046 AND SCREW G67-XX-XXX OR G56-XX-XXX AS APPROPRIATE FOR INSTALLATION.

2 WIRE ROUTED THRU FLOOR IN THIS AREA.

1 WIRE ROUTED IN SIDEWALL.

NOTES:

265 CODES/STANDARDS-CSA/CMVSS

1B1 CODES/STANDARDS USA

1B1 265

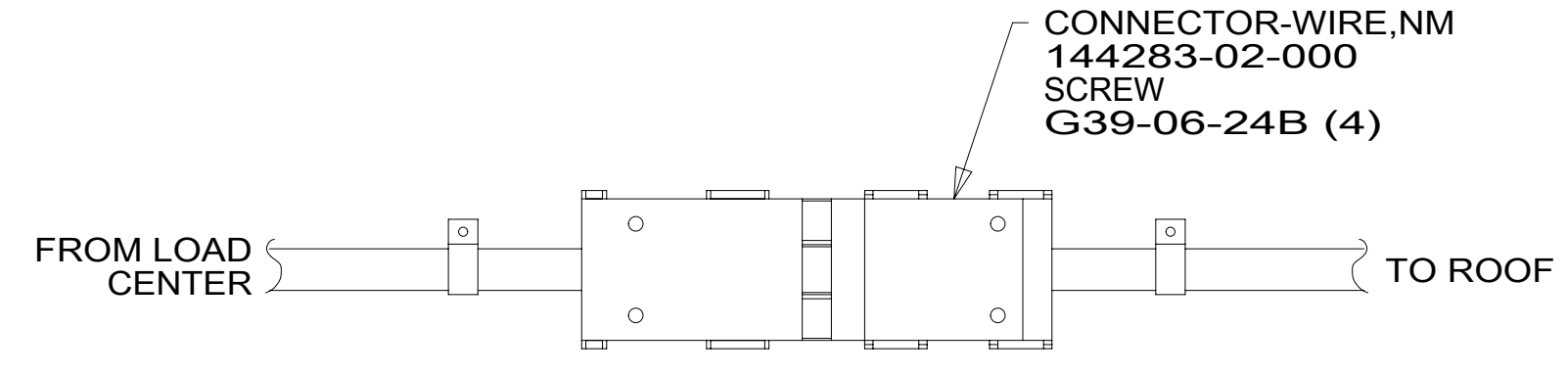
FOR ELECTRICAL TORQUE SPECIFICATIONS SEE DWG NO. 128783-01-000

FOR ELECTRICAL CALLOUTS SEE DWG NO. 121339-01-000

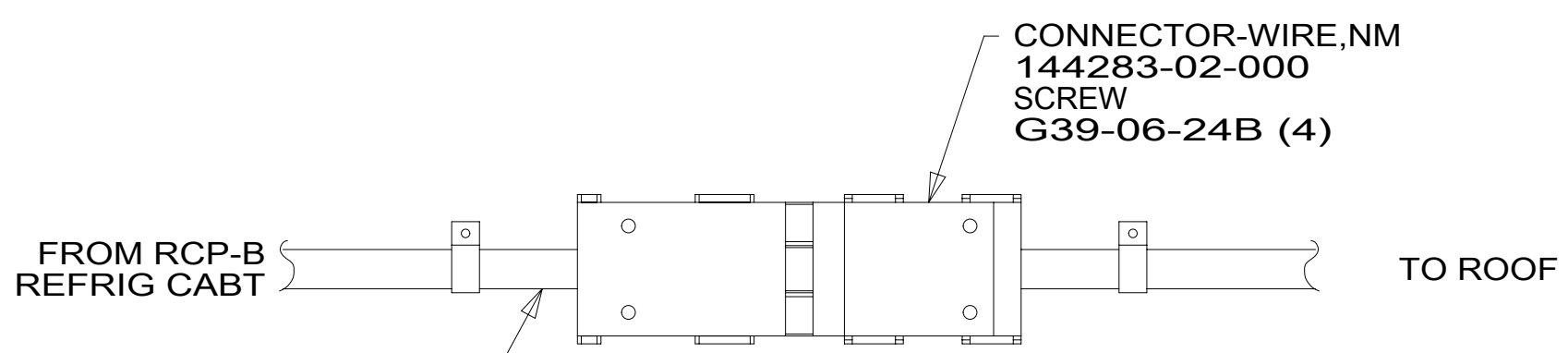
DESCRIPTION: WIRING INSTL-BODY, 110V

SHEET: 2 OF 5 ITEM/PART NO: 000176987 / 30013801000 REV

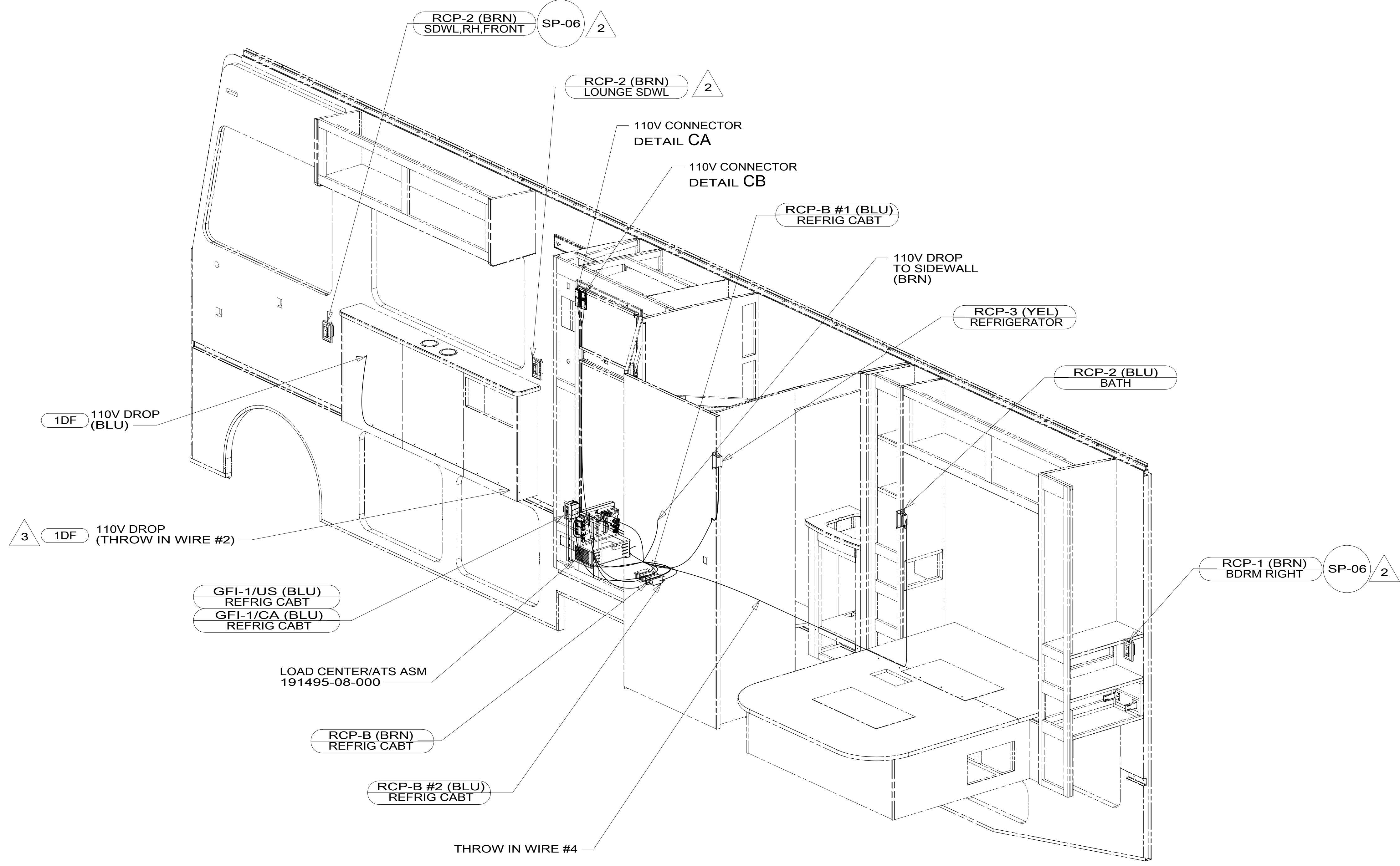
8 7 6 5 4 3 2 1



DETAIL CA  
(RED)



DETAIL CB  
(BRN)



- 3 ROUTE WIRE UNDER FLOOR TO THE RCP BLANK BY THE LOAD CENTER.
- 2 WIRE ROUTED IN SIDEWALL.

1. AT MINIMUM ALL WIRES TO BE SUPPORTED AND SECURED PER CODE REQUIREMENTS. USE CLAMP 10495 OR 10497 OR WIRE TIE 8343 OR 108046 AND SCREW G67-XX-XXX OR G56-XX-XXX AS APPROPRIATE FOR INSTALLATION.

NOTES:

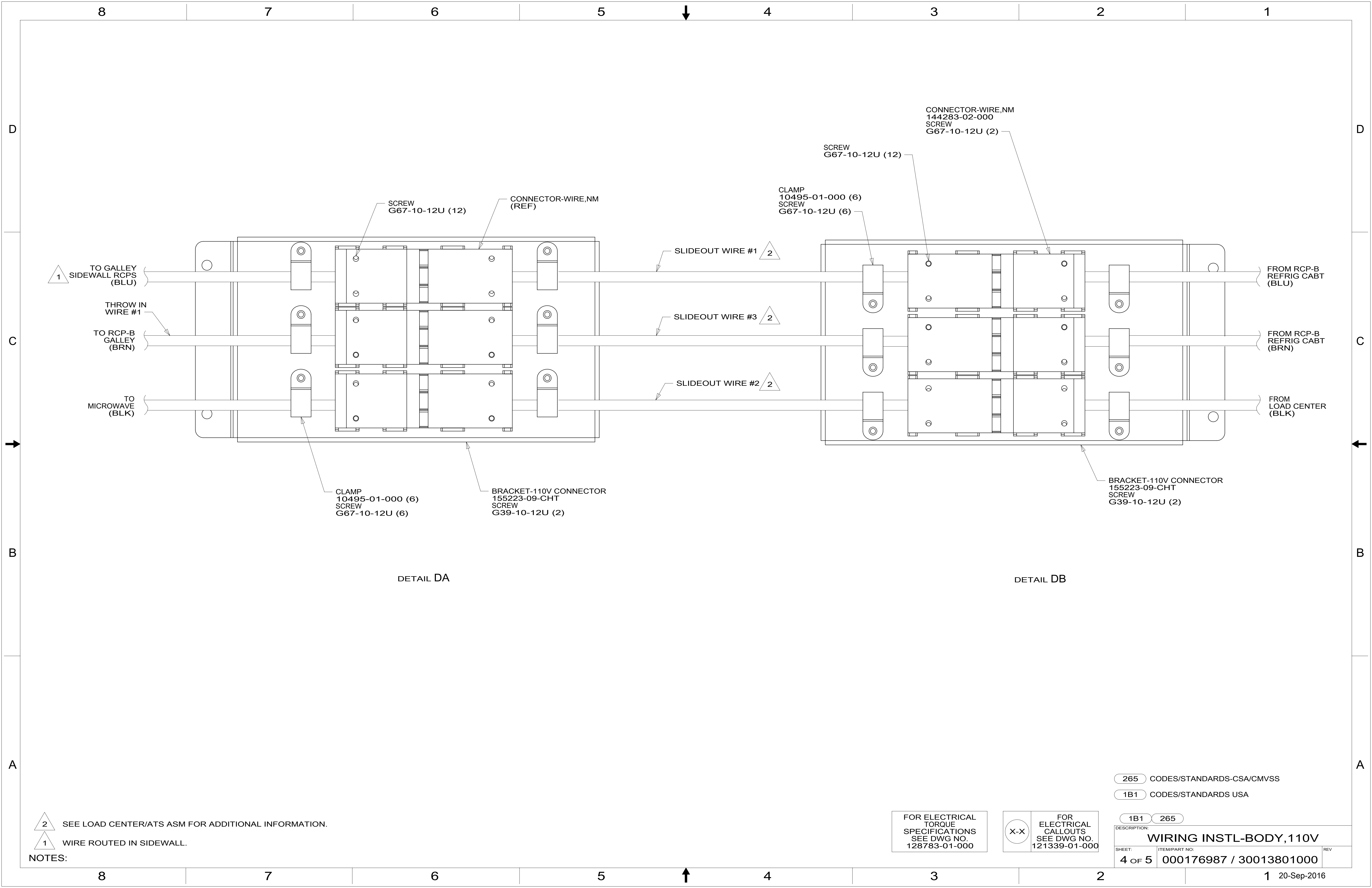
- 1DF EXT TV ENTERTAINMENT CENTER
- 265 CODES/STANDARDS-CSA/CMVSS
- 1B1 CODES/STANDARDS USA

FOR ELECTRICAL TORQUE SPECIFICATIONS SEE DWG NO. 128783-01-000

FOR ELECTRICAL CALLOUTS SEE DWG NO. 121339-01-000

DESCRIPTION:	
<b>WIRING INSTL-BODY, 110V</b>	
SHEET:	ITEM/PART NO.:
3 OF 5	000176987 / 30013801000
REV	

8 7 6 5 4 3 2 1 20-Sep-2016



1 TO GALLEY SIDEWALL RCPS (BLU)

THROW IN WIRE #1

TO RCP-B GALLEY (BRN)

TO MICROWAVE (BLK)

FROM RCP-B REFRIG CABT (BLU)

FROM RCP-B REFRIG CABT (BRN)

FROM LOAD CENTER (BLK)

CLAMP 10495-01-000 (6)  
SCREW G67-10-12U (6)

BRACKET-110V CONNECTOR 155223-09-CHT  
SCREW G39-10-12U (2)

CLAMP 10495-01-000 (6)  
SCREW G67-10-12U (6)

CONNECTOR-WIRE,NM 144283-02-000  
SCREW G67-10-12U (2)

SCREW G67-10-12U (12)

BRACKET-110V CONNECTOR 155223-09-CHT  
SCREW G39-10-12U (2)

DETAIL DA

DETAIL DB

2 SEE LOAD CENTER/ATS ASM FOR ADDITIONAL INFORMATION.

1 WIRE ROUTED IN SIDEWALL.

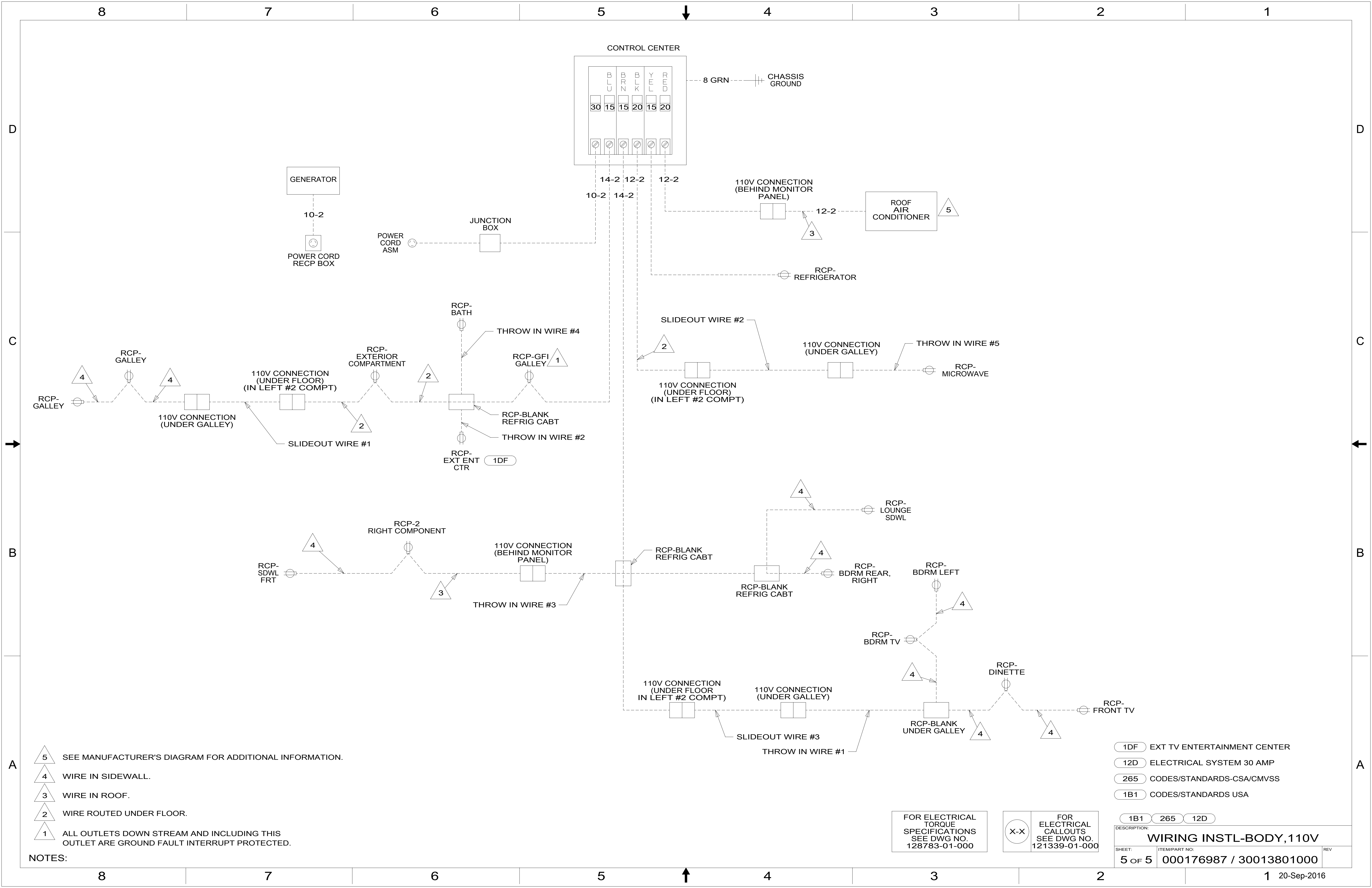
FOR ELECTRICAL TORQUE SPECIFICATIONS SEE DWG NO. 128783-01-000

FOR ELECTRICAL CALLOUTS SEE DWG NO. 121339-01-000

265 CODES/STANDARDS-CSA/CMVSS

1B1 CODES/STANDARDS USA

DESCRIPTION:	
1B1 265	
<b>WIRING INSTL-BODY, 110V</b>	
SHEET:	ITEM/PART NO:
4 OF 5	000176987 / 30013801000
REV	



- NOTES:
- 5 SEE MANUFACTURER'S DIAGRAM FOR ADDITIONAL INFORMATION.
  - 4 WIRE IN SIDEWALL.
  - 3 WIRE IN ROOF.
  - 2 WIRE ROUTED UNDER FLOOR.
  - 1 ALL OUTLETS DOWN STREAM AND INCLUDING THIS OUTLET ARE GROUND FAULT INTERRUPT PROTECTED.

- 1DF EXT TV ENTERTAINMENT CENTER
- 12D ELECTRICAL SYSTEM 30 AMP
- 265 CODES/STANDARDS-CSA/CMVSS
- 1B1 CODES/STANDARDS USA

FOR ELECTRICAL TORQUE SPECIFICATIONS SEE DWG NO. 128783-01-000

FOR ELECTRICAL CALLOUTS SEE DWG NO. 121339-01-000

DESCRIPTION:	1B1 265 12D	
<b>WIRING INSTL-BODY, 110V</b>		
SHEET:	ITEM/PART NO.:	REV:
5 OF 5	000176987 / 30013801000	