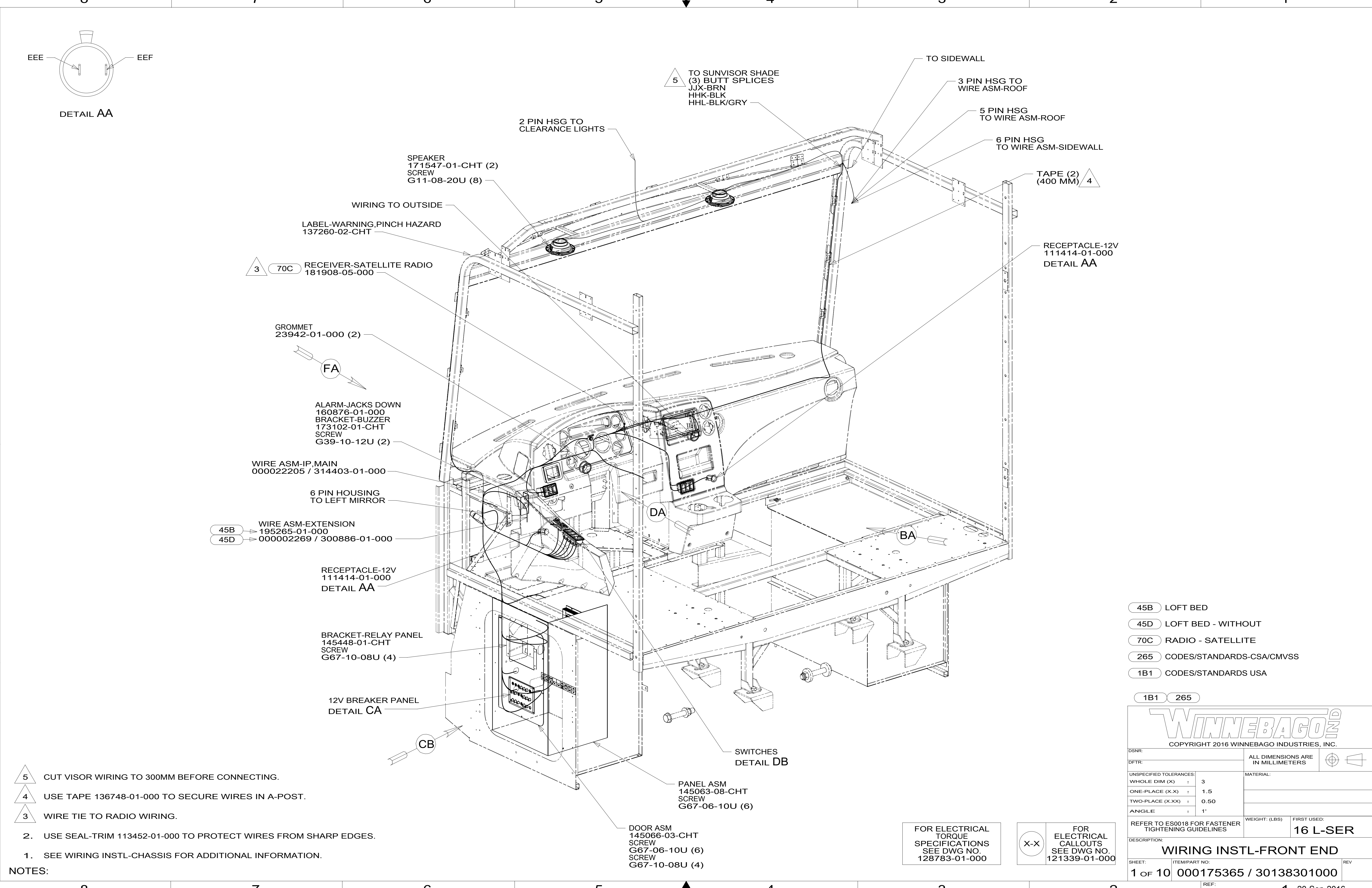


DETAIL AA



- NOTES:
- 5 CUT VISOR WIRING TO 300MM BEFORE CONNECTING.
 - 4 USE TAPE 136748-01-000 TO SECURE WIRES IN A-POST.
 - 3 WIRE TIE TO RADIO WIRING.
 - 2. USE SEAL-TRIM 113452-01-000 TO PROTECT WIRES FROM SHARP EDGES.
 - 1. SEE WIRING INSTL-CHASSIS FOR ADDITIONAL INFORMATION.

- 45B LOFT BED
- 45D LOFT BED - WITHOUT
- 70C RADIO - SATELLITE
- 265 CODES/STANDARDS-CSA/CMVSS
- 1B1 CODES/STANDARDS USA

WINNEBAGO
COPYRIGHT 2016 WINNEBAGO INDUSTRIES, INC.

DSNR:	ALL DIMENSIONS ARE IN MILLIMETERS
DIFTR:	
UNSPECIFIED TOLERANCES:	MATERIAL:
WHOLE DIM (X) : 3	
ONE-PLACE (X.X) : 1.5	
TWO-PLACE (X.XX) : 0.50	
ANGLE : 1°	
REFER TO ES0018 FOR FASTENER TIGHTENING GUIDELINES	WEIGHT: (LBS) FIRST USED: 16 L-SER
DESCRIPTION: WIRING INSTL-FRONT END	
SHEET: 1 of 10	ITEM/PART NO: 000175365 / 30138301000
REF:	REV: 1 20-Sep-2016

FOR ELECTRICAL TORQUE SPECIFICATIONS SEE DWG NO. 128783-01-000

FOR ELECTRICAL CALLOUTS SEE DWG NO. 121339-01-000

8

7

6

5

4

3

2

1

WIRE ASM-IP,MAIN

LABEL-CB PREP OPTION
104678-01-000



CB POWER PROVISION
YELLOW +12V
WHITE GROUND
COAX ANTENNA
(SEE REVERSE SIDE ALSO)

WHT YEL

TO CUSTOMERS
CB RADIO

DETAIL BB 579

1 2 PIN HOUSING
(2) BUTT SPLICES

RING TERMINALS
TO GROUND STUD

(2) BUTT SPLICES
TO CB PREP
DETAIL BB

TO WIRE ASM-RADIO
DETAIL JA

2 & 6 PIN HOUSINGS
TO LEFT MIRROR

BUTT SPLICE
SPADE TERMINAL
TO 12V RCP

TO SWITCHES
DETAIL DB

2 & 6 PIN HOUSINGS
TO HEATER/AC CONTROLS

TO SWITCHES

DETAIL BA

579 RADIO - CB WIRE PREP

265 CODES/STANDARDS-CSA/CMVSS

1B1 CODES/STANDARDS USA

1B1 265

2 EDGE OF LABEL TO HANG JUST BELOW BOTTOM OF DASH.

1 ROUTE WIRES UP LEFT A-PILLAR.

NOTES:

FOR ELECTRICAL
TORQUE
SPECIFICATIONS
SEE DWG NO.
128783-01-000

X-X FOR
ELECTRICAL
CALLOUTS
SEE DWG NO.
121339-01-000

DESCRIPTION:
WIRING INSTL-FRONT END

SHEET: 2 OF 10 ITEM/PART NO: 000175365 / 30138301000 REV

8

7

6

5

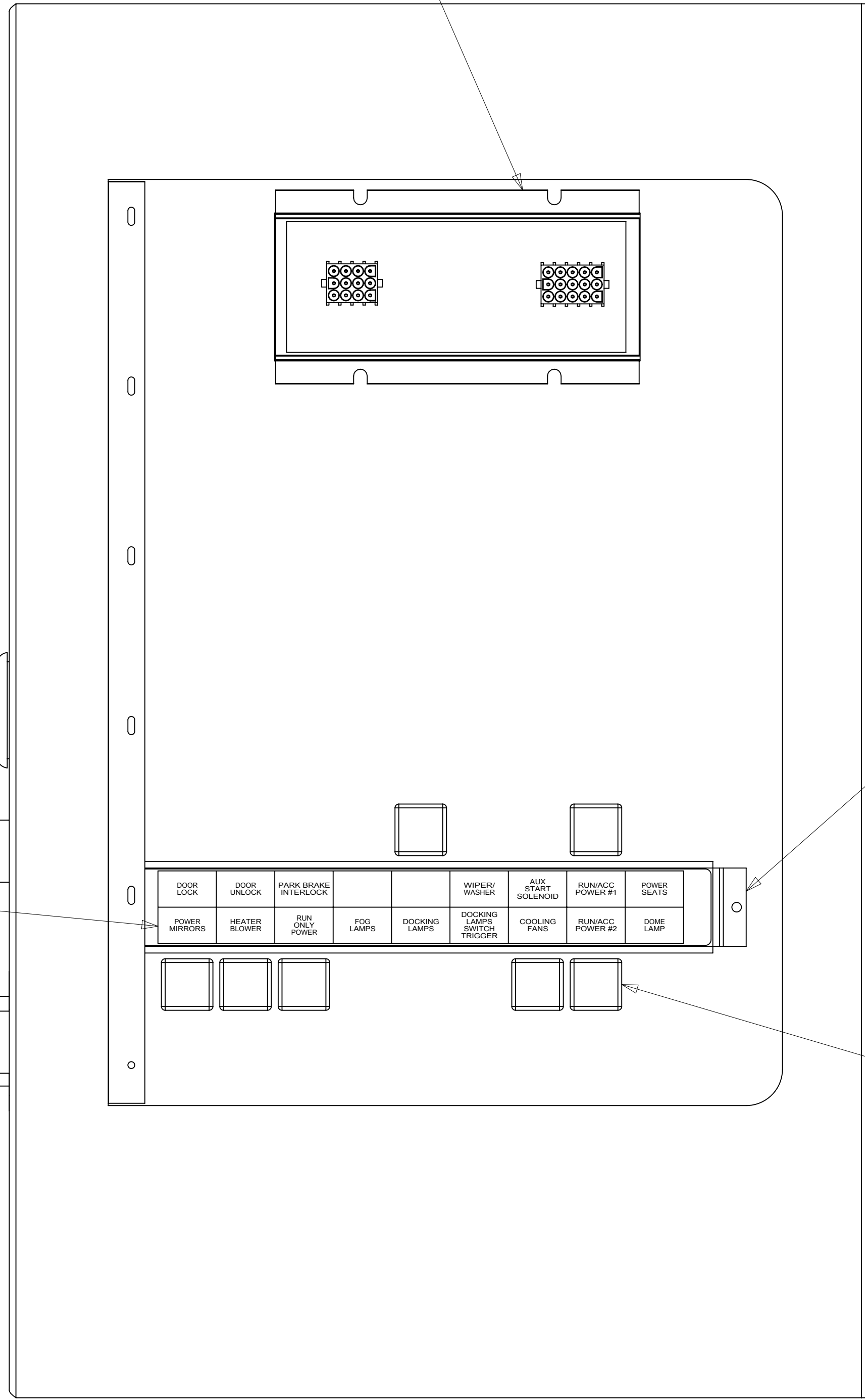
4

3

2

1 20-Sep-2016

HEADLAMP MODULE
(CHASSIS SUPPLIED)
SCREW
G1108-08B (2)



VIEW CB
(WITH COVER REMOVED) 3

GROMMET
23942-01-000
SEAL

STUD-FEED THRU
118499-01-000 (2)

CHASSIS POWER

LABEL
136161-05-CHT

COACH POWER

BRACKET-MOUNTING
118571-07-000
SCREW
G19-10-08B (2)
NUT
G11-10-00B (2)

BRACKET
136120-02-CHT
SCREW
G11-08-08B (2)

RELAY
63912-02-000 (7)
SCREW
G11-08-08B (7)

BUSS BAR
141744-02-000

6
BLK

BUSS BAR
141744-02-000

BUSS BAR
141744-01-000

8
BLK

6
BLK

DETAIL CA
(BACK VIEW) 1

LABEL-CIRCUIT
BREAKER-MAIN
93236-48-000

CIRCUIT BREAKER-20 AMP
093654-03-000
SCREW
G52-06-04B

CIRCUIT BREAKER-6 AMP
93654-01-000
SCREW
G52-06-04B

PLUG
81211-06-000 (7)

CIRCUIT BREAKER-15 AMP
93654-02-000 (8)
SCREW
G52-06-04B (8)

DETAIL CA
(FRONT VIEW)

PLATE-CIRCUIT BREAKER
139067-07-CHT
SCREW
G11-08-08U (4)

CIRCUIT BREAKER-25 AMP
93655-01-000 (2)
SCREW
G52-06-04B (2)

CIRCUIT BREAKER-30 AMP
93655-02-000
SCREW
G52-06-04B

- NOTES:
- 3 SEAL ALL SCREWS ON EXTERIOR SIDE OF COMPARTMENT. REFER TO SEALANT MANUAL.
 - 2 CIRCUIT FFD IS PART OF WIRE ASM-CHASSIS.
 - 1 CIRCUITS LABELED ON BREAKER ARE FROM WIRE ASM-IP, MAIN, UNLESS OTHERWISE SPECIFIED.

265 CODES/STANDARDS-CSA/CMVSS

1B1 CODES/STANDARDS USA

1B1 265

FOR ELECTRICAL
TORQUE
SPECIFICATIONS
SEE DWG NO.
128783-01-000

X-X

FOR ELECTRICAL
CALLOUTS
SEE DWG NO.
121339-01-000

DESCRIPTION:
WIRING INSTL-FRONT END

SHEET: 3 OF 10 ITEM/PART NO: 000175365 / 30138301000 REV

D

C

B

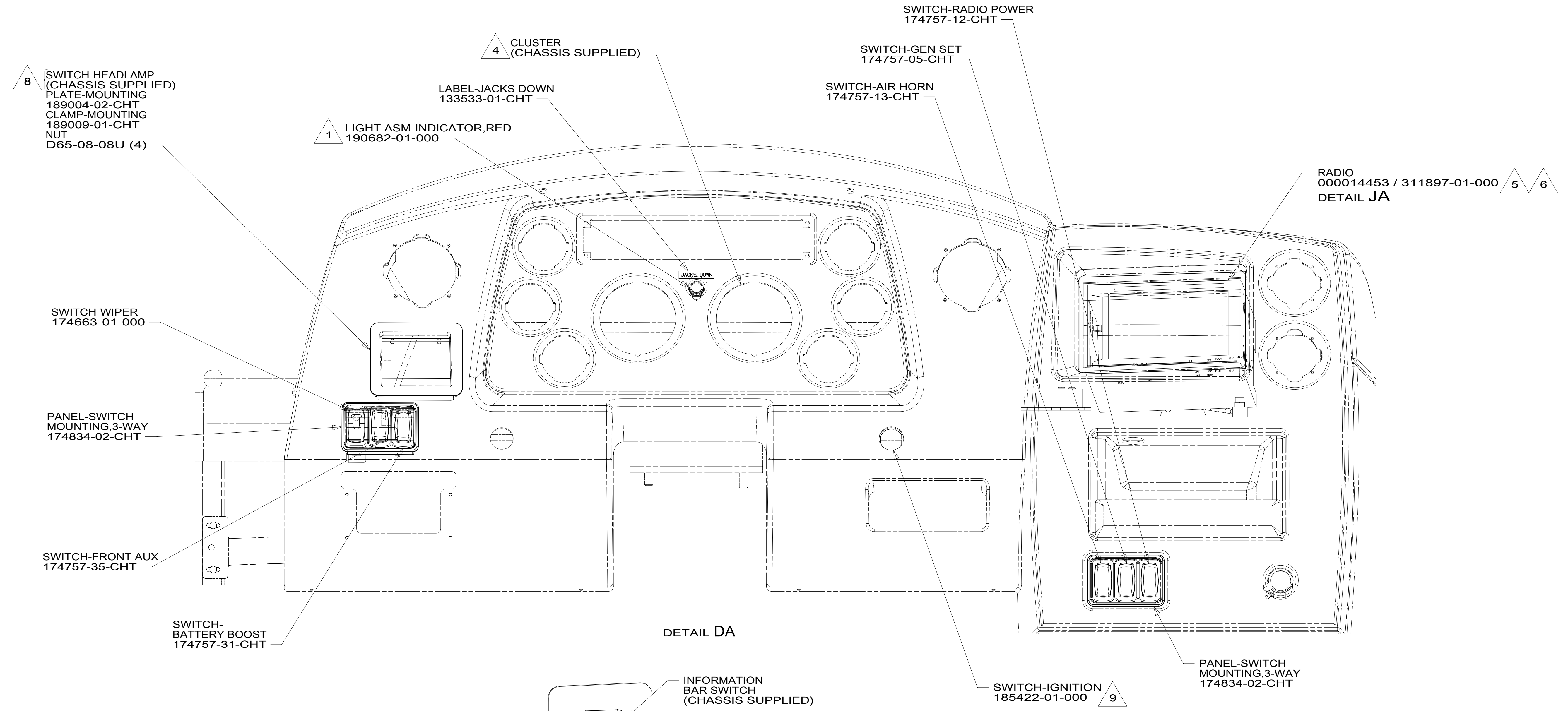
A

D

C

B

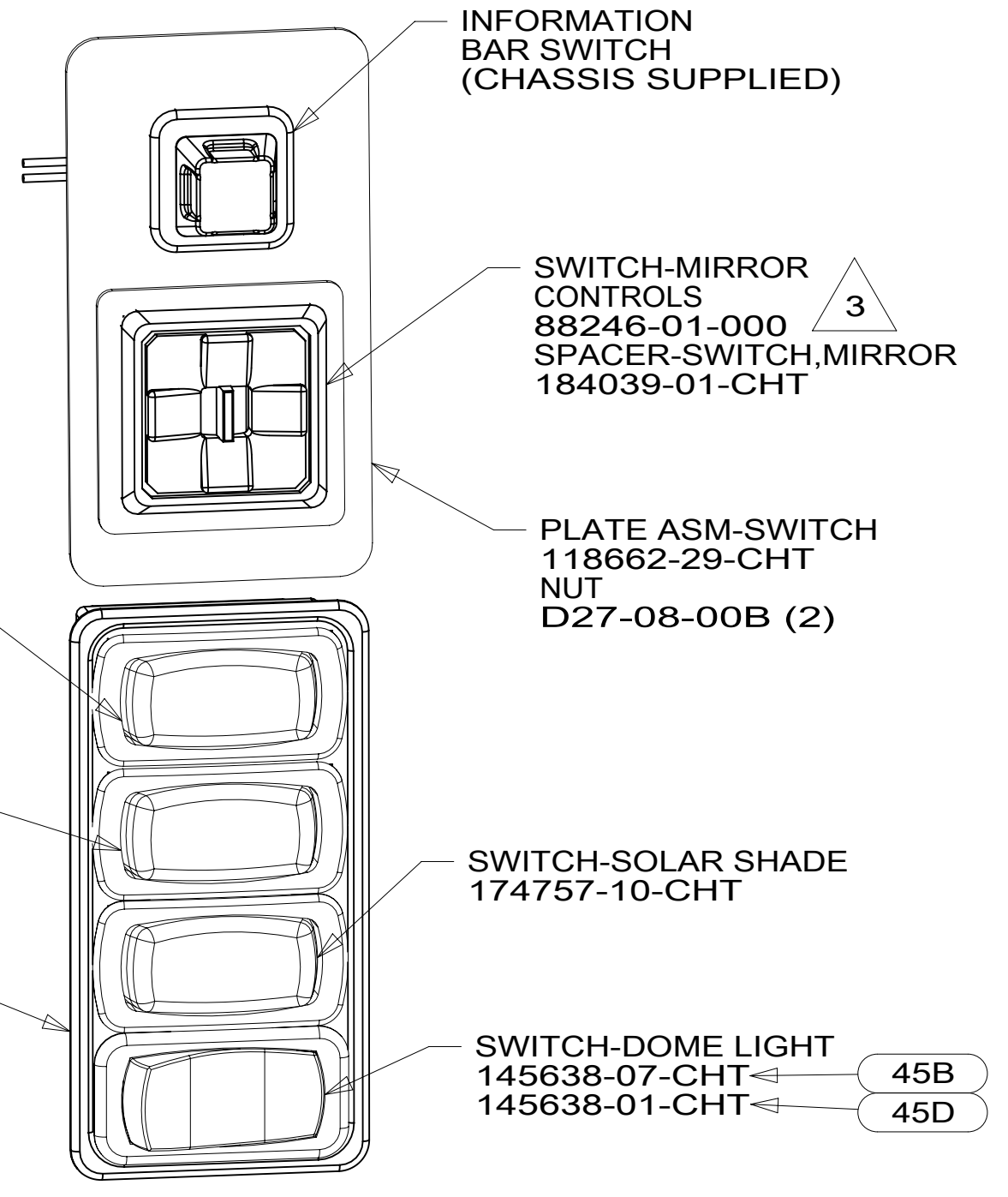
A



DETAIL DA



DETAIL DC



DETAIL DB

- NOTES:**
- 9 REPLACE CHASSIS SUPPLIED IGNITION SWITCH.
 - 8 CHASSIS SUPPLIED ROCKER SWITCHES. DOME LAMP SWITCH NOT USED. SEE DETAIL DC FOR SWITCH POSITION.
 - 7. APPLY TAPE 8363-01-000 AS NECESSARY TO SECURE NON-LOCKING CONNECTIONS.
 - 6 ATTACH TO RADIO WITH SCREW SUPPLIED WITH RADIO.
 - 5 PLUG USB CABLE INTO LEAD ON BACK OF RADIO MARKED 'USB' ROUTE CABLE TO DASH POCKET BELOW RADIO.
 - 4 SEE SHEET 5 FOR GAUGE PLACEMENT.
 - 3 MOUNT SWITCH SO WHEN ACTUATOR IS PUSHED LEFT, THE LETTER L IS SHOWING.
 - 2 CONNECT TO MATING LABELED CONNECTOR ON CHASSIS SUPPLIED WIRING.
 - 1 CONNECT POSITIVE WIRE TO TERMINAL MARKED WITH A "+", YEL-WINNEBAGO WIRING RED-HWH WIRING

- 45D LOFT BED - WITHOUT
- 45B LOFT BED
- 70C RADIO - SATELLITE
- 1LE FRTL 44,320 400HP 6SPD TAG
- 1AH FRTL 34,320 380HP 8.3L 6 SPD
- 1AC FRTL 32,350 360HP 6.7L 6 SPD
- 1AB FRTL 27,910 340 6.7L 10 EMM
- 15D GPS-NAVIGATION SYSTEM
- 15C GPS-NAVIGATION SYSTEM W/O
- 265 CODES/STANDARDS-CSA/CMVSS
- 1B1 CODES/STANDARDS USA

FOR ELECTRICAL TORQUE SPECIFICATIONS SEE DWG NO. 128783-01-000

X-X FOR ELECTRICAL CALLOUTS SEE DWG NO. 121339-01-000

DESCRIPTION:	1B1 265
WIRING INSTL-FRONT END	
SHEET:	ITEM/PART NO:
4 of 10	000175365 / 30138301000
REV	

8

7

6

5

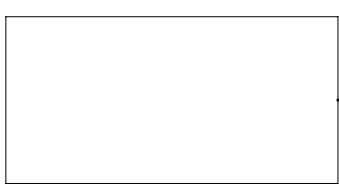
4

3

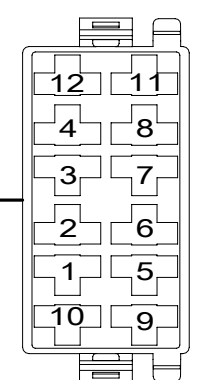
2

1

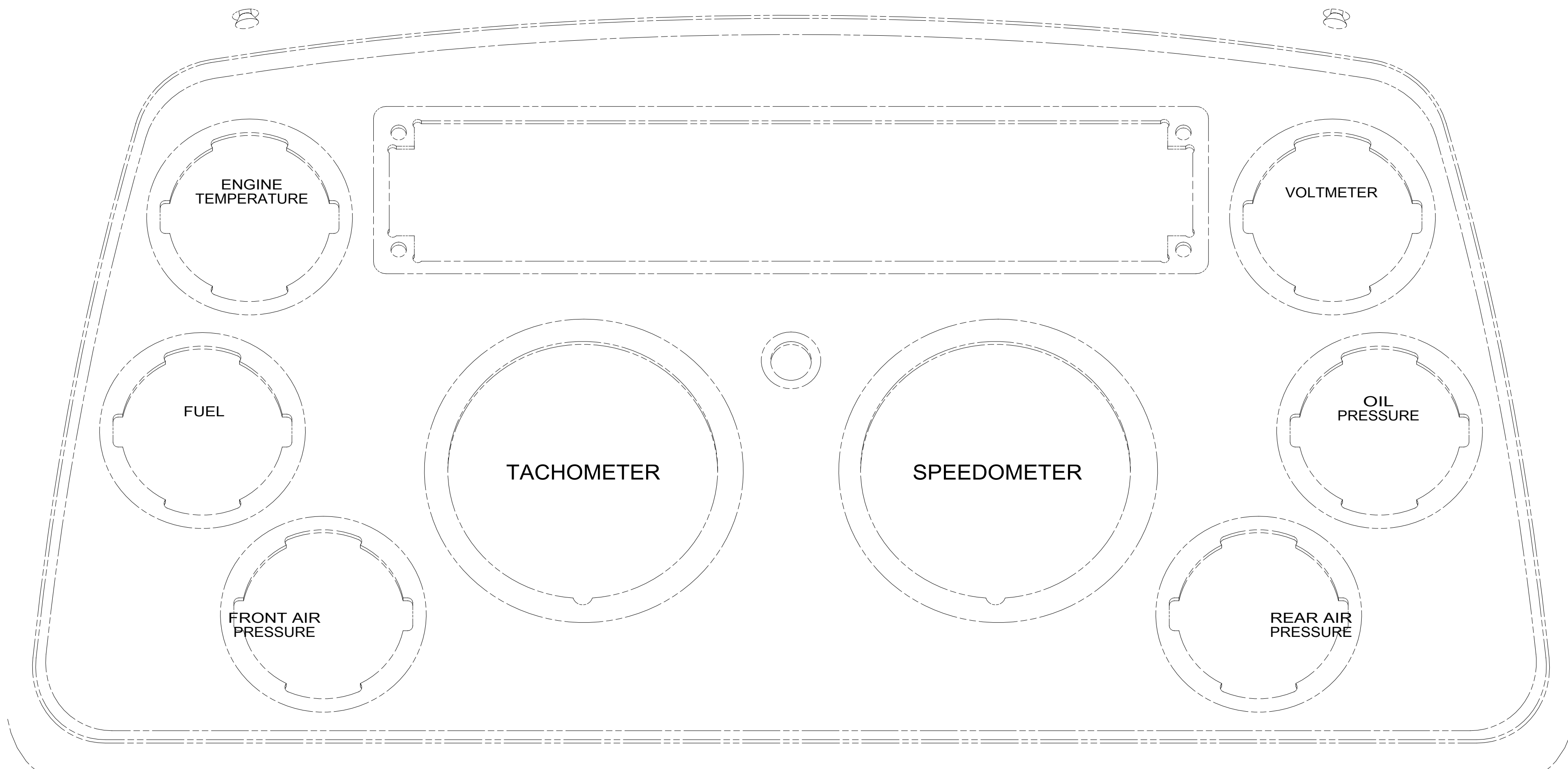
1
CONNECTS TO
CHASSIS WIRING



WIRE ASM-EXHAUST BRAKE SWITCH
000026468 / 315655-01-000



DETAIL EA



FREIGHTLINER CLUSTER
LOCATION

1 CHASSIS WIRING HAS MATING CONNECTOR
AND IS LABELED "ENGINE BRAKE SWITCH"

NOTES:

FOR ELECTRICAL
TORQUE
SPECIFICATIONS
SEE DWG NO.
128783-01-000

X-X FOR
ELECTRICAL
CALLOUTS
SEE DWG NO.
121339-01-000

265 CODES/STANDARDS-CSA/CMVSS

1B1 CODES/STANDARDS USA

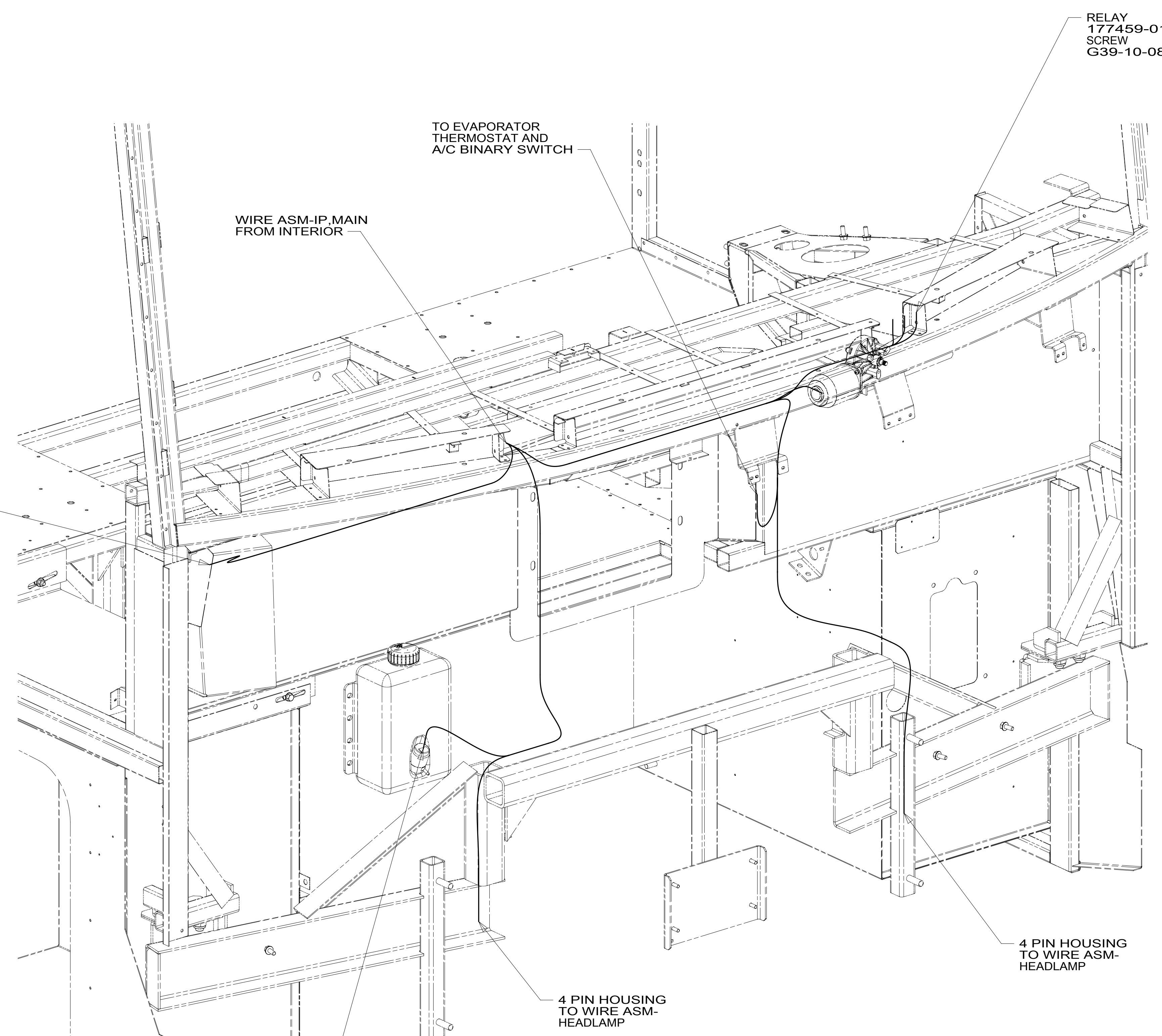
1B1 265

DESCRIPTION:
WIRING INSTL-FRONT END

SHEET: 5 OF 10 ITEM/PART NO: 000175365 / 30138301000 REV

8 7 6 5 4 3 2 1

D
C
B
A



VIEW FA

265 CODES/STANDARDS-CSA/CMVSS
 1B1 CODES/STANDARDS USA

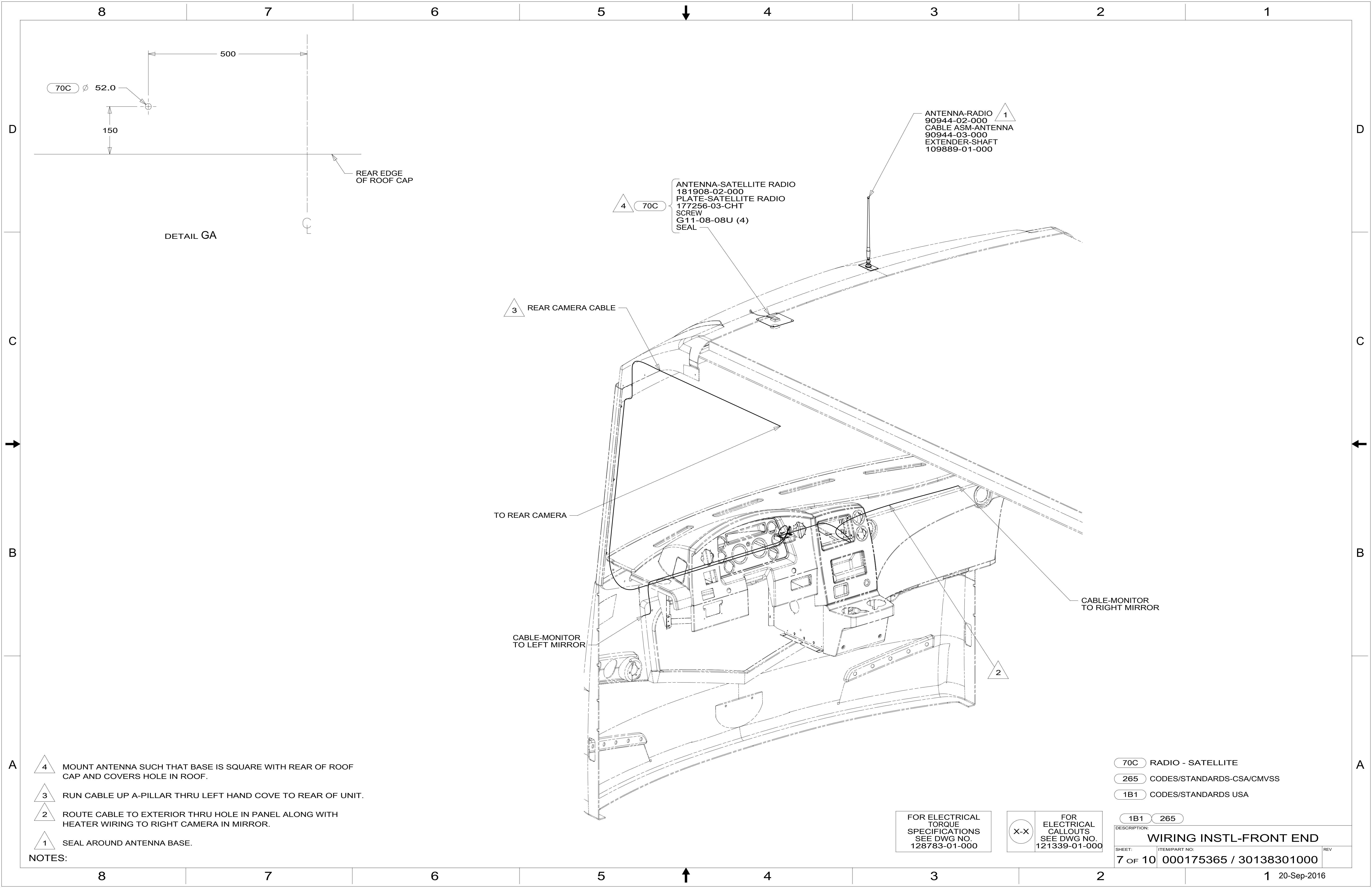
FOR ELECTRICAL TORQUE SPECIFICATIONS SEE DWG NO. 128783-01-000

X-X FOR ELECTRICAL CALLOUTS SEE DWG NO. 121339-01-000

1B1 265
 DESCRIPTION:
WIRING INSTL-FRONT END

SHEET: 6 OF 10 ITEM/PART NO: 000175365 / 30138301000 REV

8 7 6 5 4 3 2 1 20-Sep-2016



DETAIL GA

REAR EDGE OF ROOF CAP

4

70C

ANTENNA-SATELLITE RADIO
181908-02-000
PLATE-SATELLITE RADIO
177256-03-CHT
SCREW
G11-08-08U (4)
SEAL

1

ANTENNA-RADIO
90944-02-000
CABLE ASM-ANTENNA
90944-03-000
EXTENDER-SHAFT
109889-01-000

3

REAR CAMERA CABLE

TO REAR CAMERA

CABLE-MONITOR
TO LEFT MIRROR

CABLE-MONITOR
TO RIGHT MIRROR

2

4

MOUNT ANTENNA SUCH THAT BASE IS SQUARE WITH REAR OF ROOF CAP AND COVERS HOLE IN ROOF.

3

RUN CABLE UP A-PILLAR THRU LEFT HAND COVE TO REAR OF UNIT.

2

ROUTE CABLE TO EXTERIOR THRU HOLE IN PANEL ALONG WITH HEATER WIRING TO RIGHT CAMERA IN MIRROR.

1

SEAL AROUND ANTENNA BASE.

NOTES:

- 70C RADIO - SATELLITE
- 265 CODES/STANDARDS-CSA/CMVSS
- 1B1 CODES/STANDARDS USA

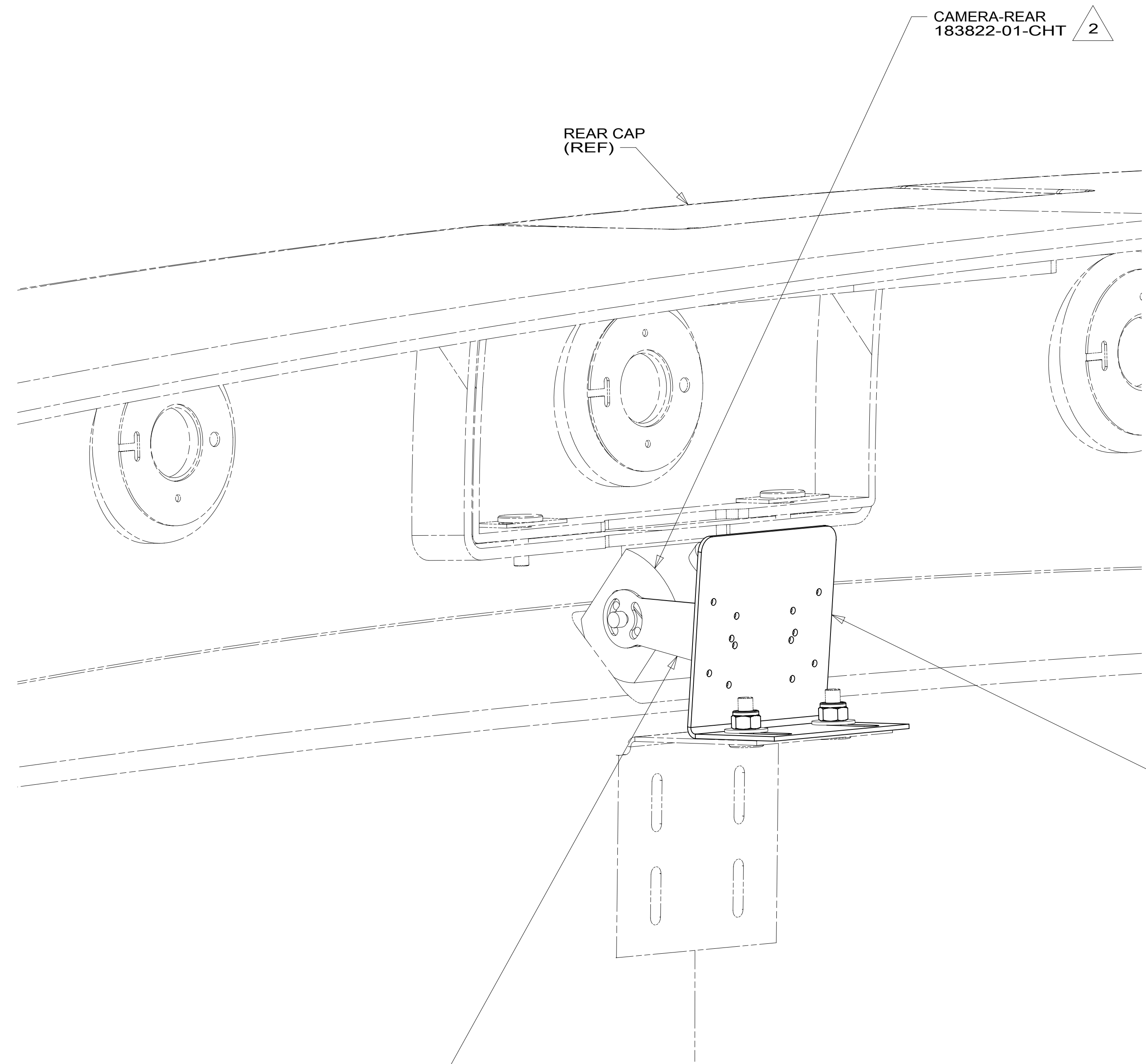
FOR ELECTRICAL TORQUE SPECIFICATIONS SEE DWG NO. 128783-01-000

X-X FOR ELECTRICAL CALLOUTS SEE DWG NO. 121339-01-000

DESCRIPTION:		1B1 265	
WIRING INSTL-FRONT END			
SHEET:	ITEM/PART NO.:	REV	
7 OF 10	000175365 / 30138301000		

8 7 6 5 4 3 2 1

D
C
B
A



BRACKET-MOUNT, CAMERA
 152022-05-CHT
 WASHER
 E13-14-00U (2)
 NUT
 D29-04-00U (2)

1 BRACKET-CAMERA

CAMERA-REAR
 183822-01-CHT 2

REAR CAP
 (REF)

2 ALIGN CAMERA IN CENTER OF SHROUD OPENING AND
 ADJUST SO BACKWALL IS JUST VISIBLE.
 1 PARTS SUPPLIED WITH REAR CAMERA, VISOR NOT USED.

NOTES:

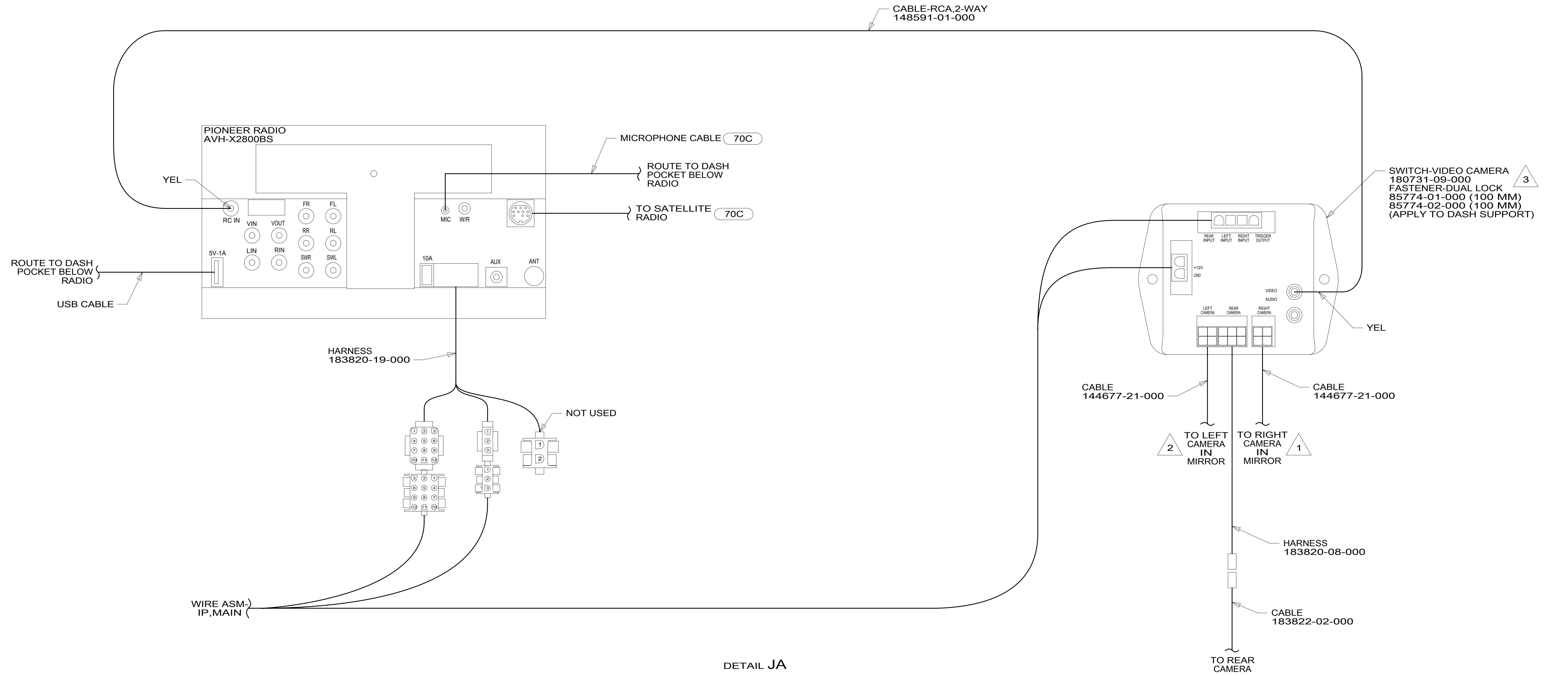
FOR ELECTRICAL
 TORQUE
 SPECIFICATIONS
 SEE DWG NO.
 128783-01-000

X-X
 FOR
 ELECTRICAL
 CALLOUTS
 SEE DWG NO.
 121339-01-000

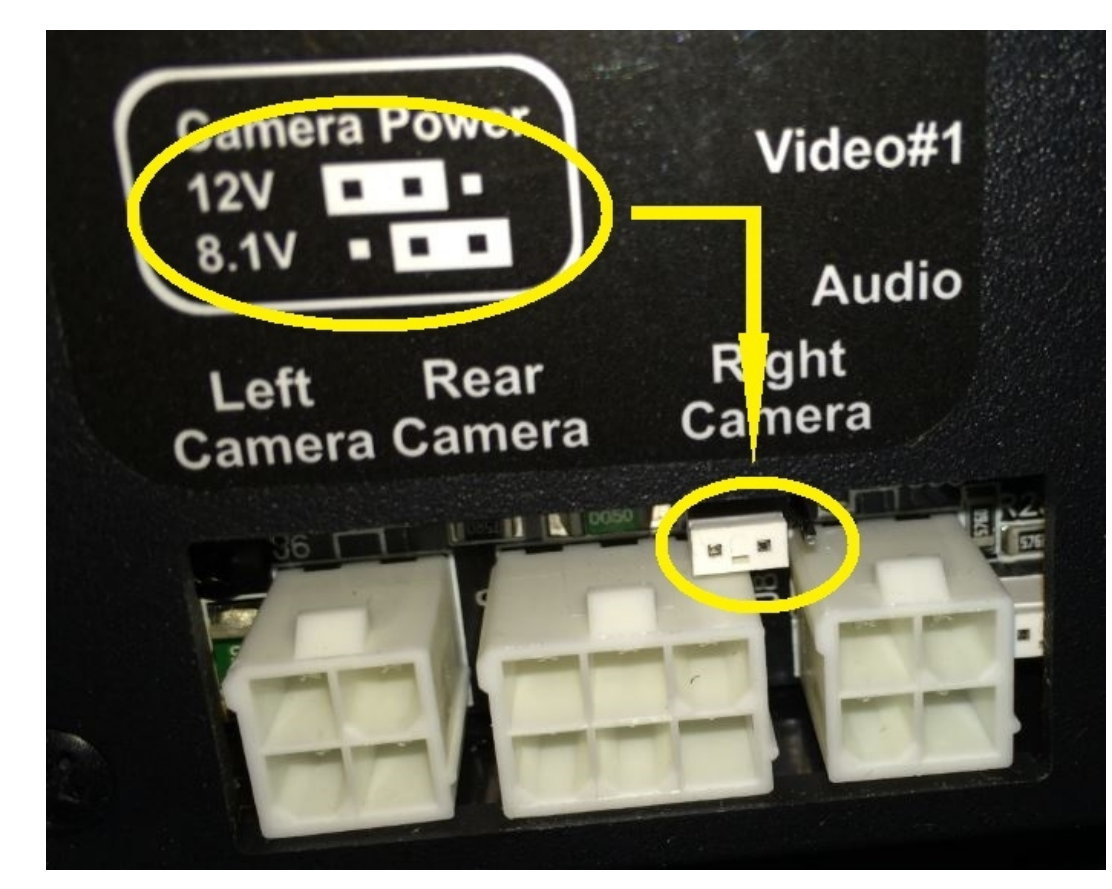
265 CODES/STANDARDS-CSA/CMVSS
 1B1 CODES/STANDARDS USA

DESCRIPTION:		1B1 265
WIRING INSTL-FRONT END		
SHEET:	ITEM/PART NO.:	REV
8 of 10	000175365 / 30138301000	

8 7 6 5 4 3 2 1 20-Sep-2016



DETAIL JA



DETAIL JB

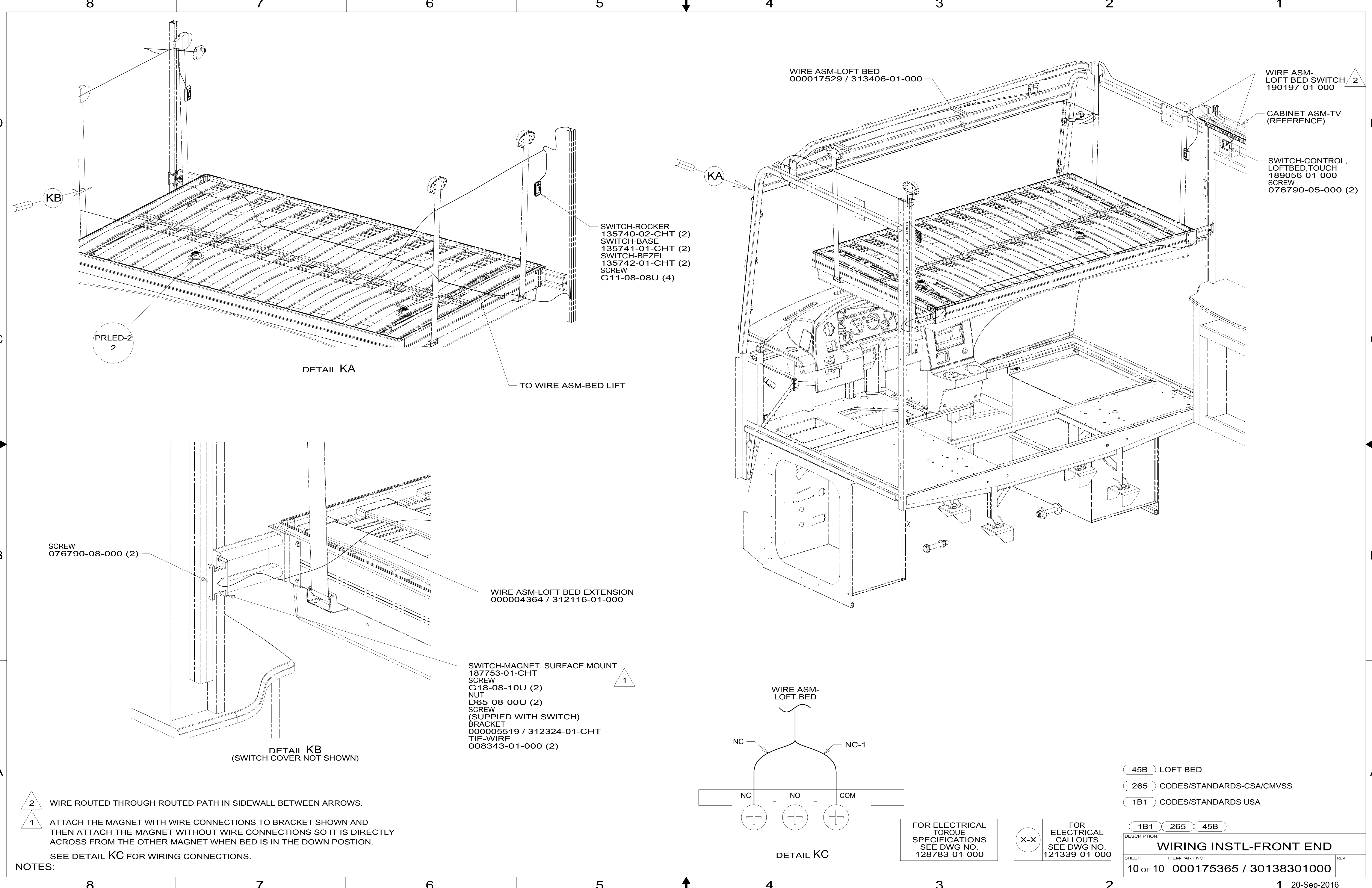
- NOTES:
- 3 ENSURE CAMERA POWER JUMPER IS IN 12V POSITION. MOVE TO 12V POSITION IF NECESSARY. SEE DETAIL JB.
 - 2 MARK LEFT CABLE WITH YELLOW TAPE 900000-07-000 NEXT TO CONNECTOR.
 - 1 MARK RIGHT CABLE WITH WHITE TAPE 900000-08-000 NEXT TO CONNECTOR.

- 70C RADIO - SATELLITE
- 265 CODES/STANDARDS-CSA/CMVSS
- 1B1 CODES/STANDARDS USA

FOR ELECTRICAL TORQUE SPECIFICATIONS SEE DWG NO. 128783-01-000

FOR ELECTRICAL CALLOUTS SEE DWG NO. 121339-01-000

DESCRIPTION:	
WIRING INSTL-FRONT END	
SHEET:	ITEM/PART NO. REV
9 OF 10	000175365 / 30138301000

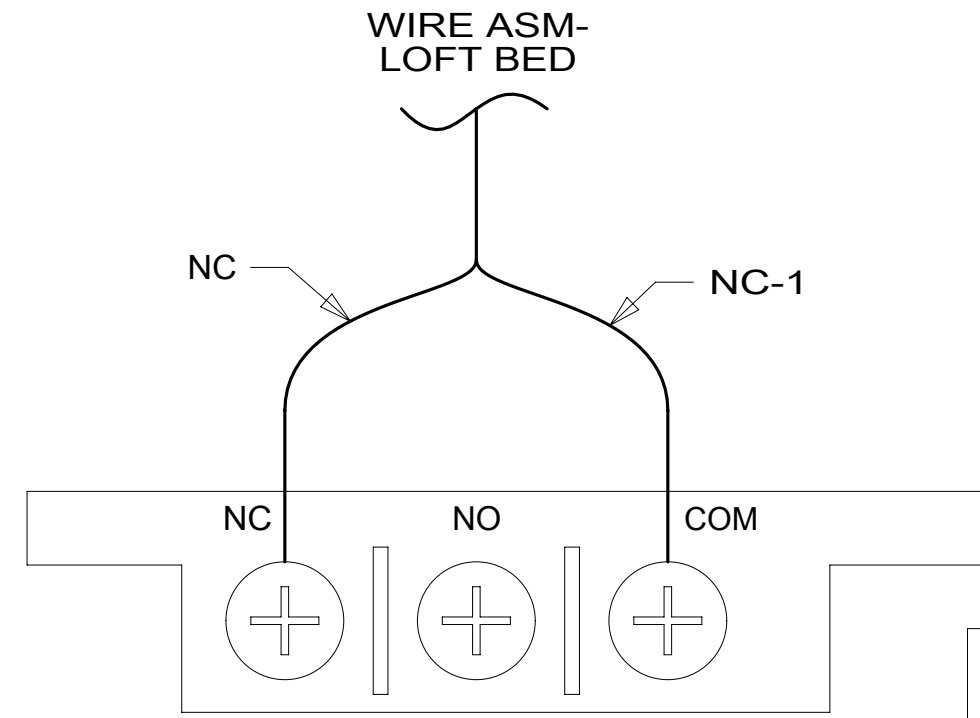


2 WIRE ROUTED THROUGH ROUTED PATH IN SIDEWALL BETWEEN ARROWS.

1 ATTACH THE MAGNET WITH WIRE CONNECTIONS TO BRACKET SHOWN AND THEN ATTACH THE MAGNET WITHOUT WIRE CONNECTIONS SO IT IS DIRECTLY ACROSS FROM THE OTHER MAGNET WHEN BED IS IN THE DOWN POSITION.

SEE DETAIL KC FOR WIRING CONNECTIONS.

NOTES:



DETAIL KC

FOR ELECTRICAL TORQUE SPECIFICATIONS SEE DWG NO. 128783-01-000

X-X FOR ELECTRICAL CALLOUTS SEE DWG NO. 121339-01-000

- 45B LOFT BED
- 265 CODES/STANDARDS-CSA/CMVSS
- 1B1 CODES/STANDARDS USA

DESCRIPTION:	1B1 265 45B	
WIRING INSTL-FRONT END		
SHEET:	ITEM/PART NO:	REV
10 OF 10	000175365 / 30138301000	