

8

7

6

5



4

3

2

1

LAMP-MARKER,
W RED LENS,BLK
193802-04-000
SCREW
G11-08-12U (EXT)(2)

LAMP ASM-PORCH
184120-01-CHT
SCREW
G68-06-10E (2)
CONNECTOR
58028-01-000 (2)

LAMP-MARKER,
W RED LENS,BLK
193802-04-000
SCREW
G11-08-12U (EXT)(2)

265 CODES/STANDARDS-CSA/CMVSS

1B1 CODES/STANDARDS USA

1B1 265



DSNR:	ALL DIMENSIONS ARE IN MILLIMETERS	
DIFFR:	MATERIAL:	
UNSPECIFIED TOLERANCES:		
WHOLE DIM (X) :		
ONE-PLACE (X.X) :		
TWO-PLACE (X.XX) :		
ANGLE :		

REFER TO ES0018 FOR FASTENER TIGHTENING GUIDELINES

WEIGHT: (LBS)	FIRST USED:
	16 500-SE

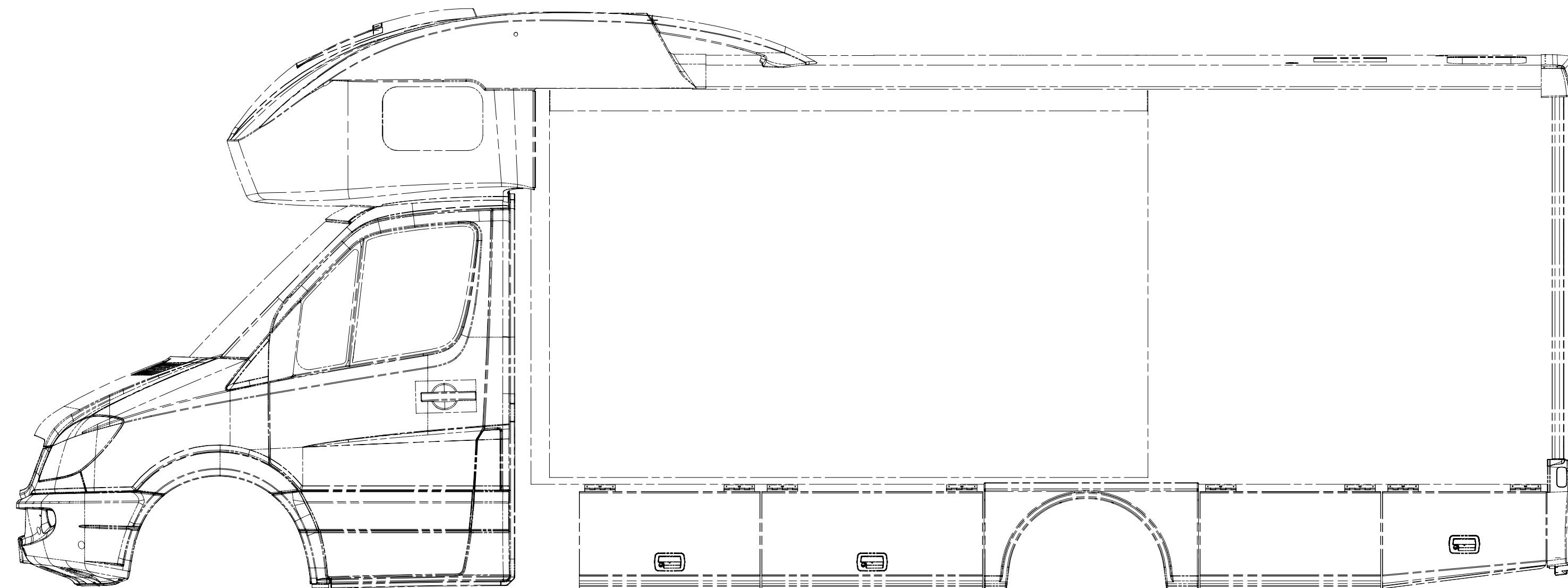
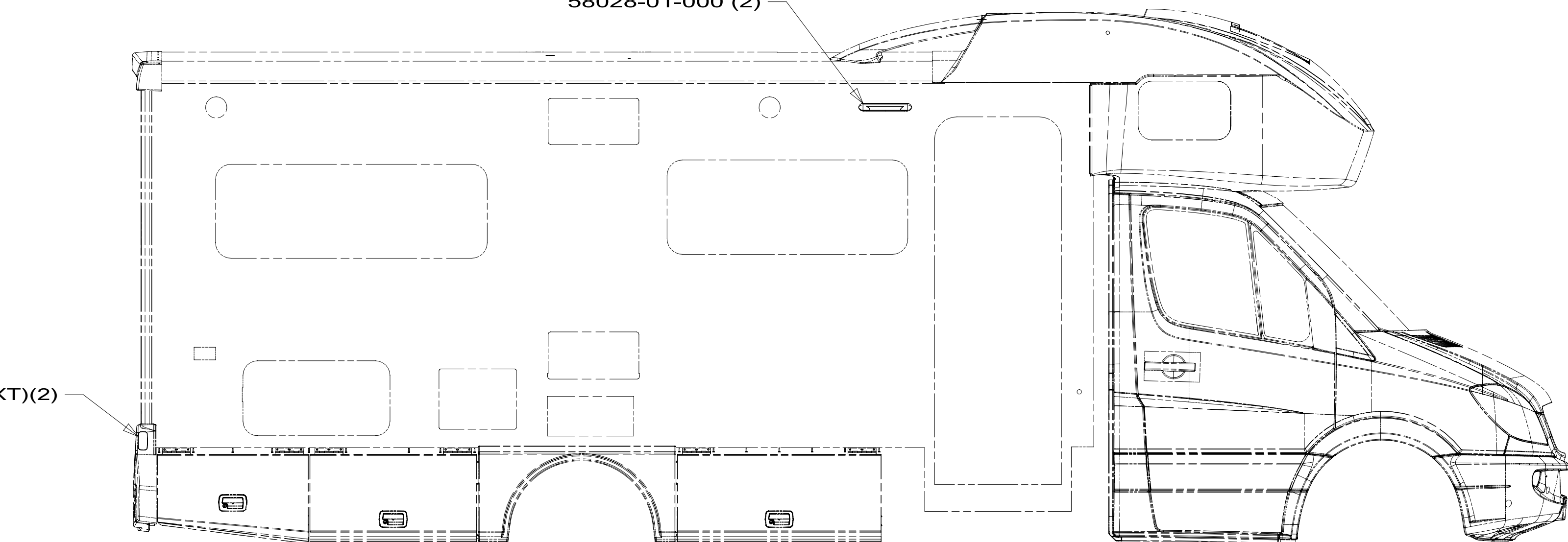
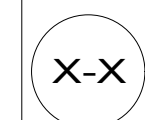
DESCRIPTION:
WIRING INSTL-EXTERIOR LAMPS

SHEET:	ITEM/PART NO.:	REV
1 OF 3	000175292 / 30087601000	

REF: 1 07-Jun-2017

FOR ELECTRICAL TORQUE SPECIFICATIONS SEE DWG NO. 128783-01-000

FOR ELECTRICAL CALLOUTS SEE DWG NO. 121339-01-000



8

7

6

5



4

3

2

1

8

7

6

5



4

3

2

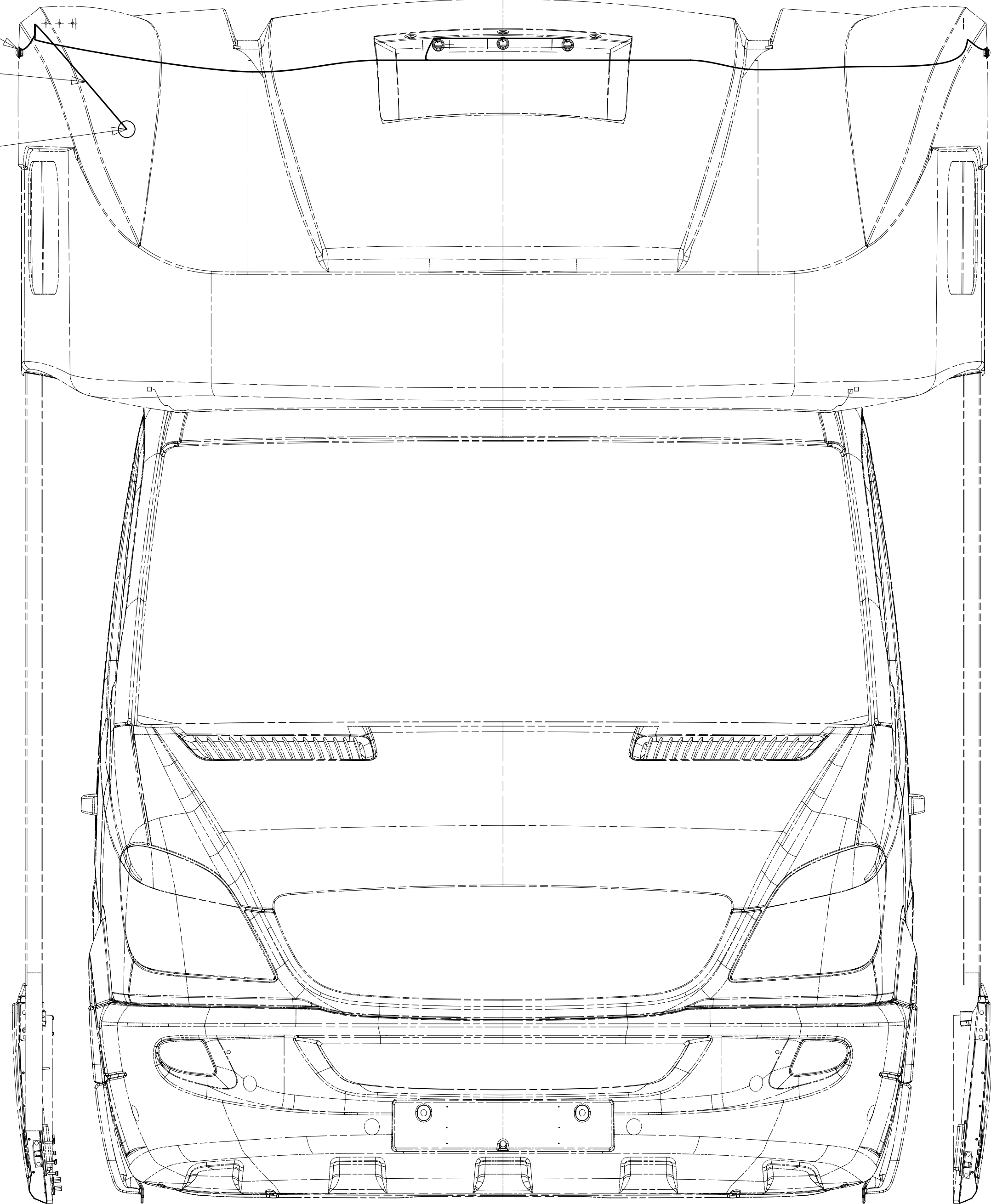
1

D

LAMP ASM-CLEARANCE
179596-01-CHT (5)

WIRE ASM-CLEARANCE LAMP
000214883 / 303578-01-000

2 PIN HOUSING
TO WIRE ASM-ROOF



C



B

A

D

C



B

A

8

7

6

5



4

3

2

1

FOR ELECTRICAL
TORQUE
SPECIFICATIONS
SEE DWG NO.
128783-01-000

FOR
ELECTRICAL
CALLOUTS
SEE DWG NO.
121339-01-000

265 CODES/STANDARDS-CSA/CMVSS

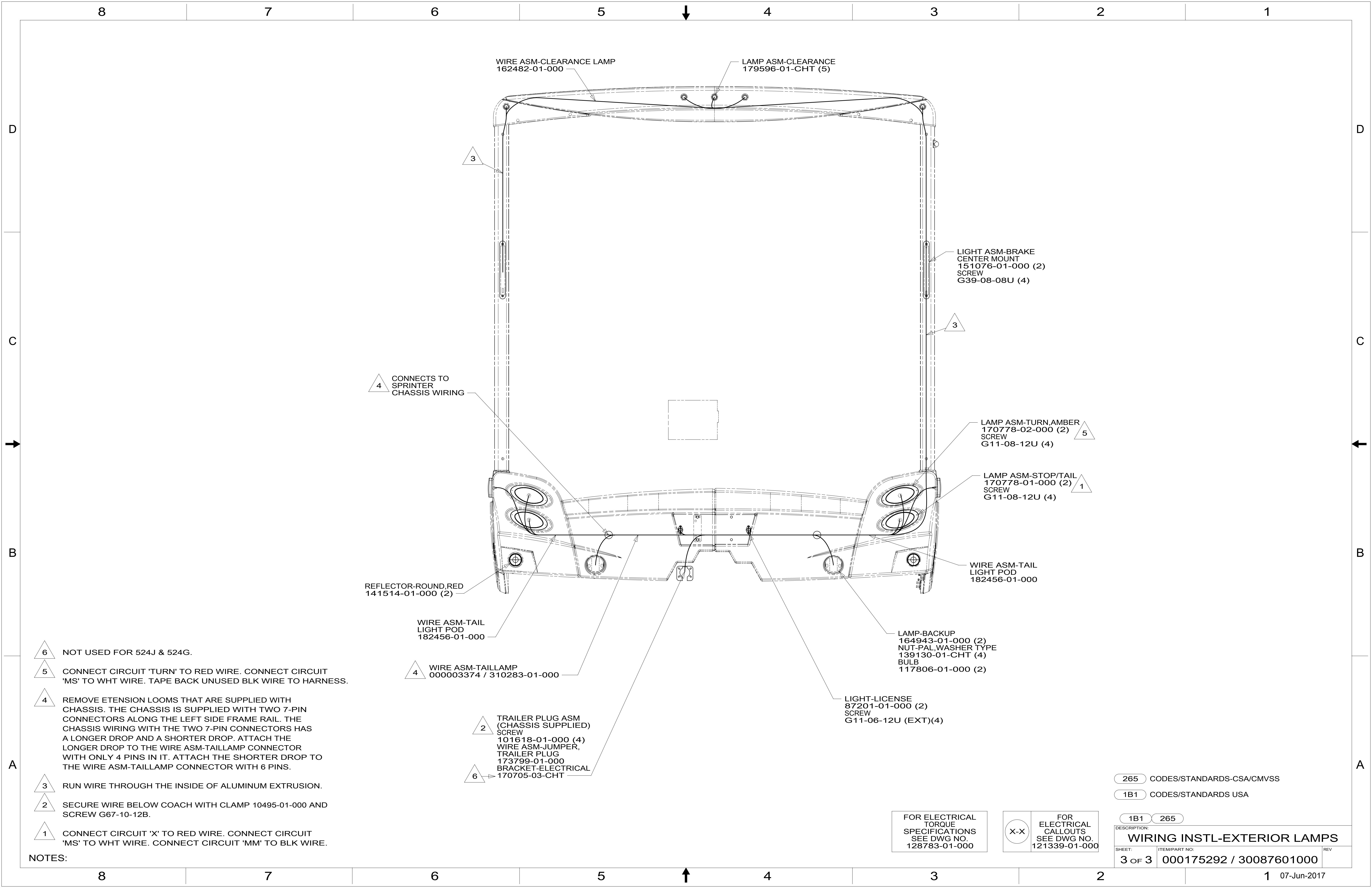
1B1 CODES/STANDARDS USA

1B1 265

DESCRIPTION:
WIRING INSTL-EXTERIOR LAMPS

SHEET: 2 OF 3	ITEM/PART NO: 000175292 / 30087601000	REV
------------------	--	-----

1 07-Jun-2017



- 6 NOT USED FOR 524J & 524G.
- 5 CONNECT CIRCUIT 'TURN' TO RED WIRE. CONNECT CIRCUIT 'MS' TO WHT WIRE. TAPE BACK UNUSED BLK WIRE TO HARNESS.
- 4 REMOVE EXTENSION LOOMS THAT ARE SUPPLIED WITH CHASSIS. THE CHASSIS IS SUPPLIED WITH TWO 7-PIN CONNECTORS ALONG THE LEFT SIDE FRAME RAIL. THE CHASSIS WIRING WITH THE TWO 7-PIN CONNECTORS HAS A LONGER DROP AND A SHORTER DROP. ATTACH THE LONGER DROP TO THE WIRE ASM-TAILLAMP CONNECTOR WITH ONLY 4 PINS IN IT. ATTACH THE SHORTER DROP TO THE WIRE ASM-TAILLAMP CONNECTOR WITH 6 PINS.
- 3 RUN WIRE THROUGH THE INSIDE OF ALUMINUM EXTRUSION.
- 2 SECURE WIRE BELOW COACH WITH CLAMP 10495-01-000 AND SCREW G67-10-12B.
- 1 CONNECT CIRCUIT 'X' TO RED WIRE. CONNECT CIRCUIT 'MS' TO WHT WIRE. CONNECT CIRCUIT 'MM' TO BLK WIRE.

NOTES:

265 CODES/STANDARDS-CSA/CMVSS
1B1 CODES/STANDARDS USA

FOR ELECTRICAL
TORQUE
SPECIFICATIONS
SEE DWG NO.
128783-01-000

FOR
ELECTRICAL
CALLOUTS
SEE DWG NO.
121339-01-000

DESCRIPTION:	
1B1 265	
WIRING INSTL-EXTERIOR LAMPS	
SHEET:	ITEM/PART NO. REV
3 OF 3	000175292 / 30087601000