

8 7 6 5 4 3 2 1

D

D

C

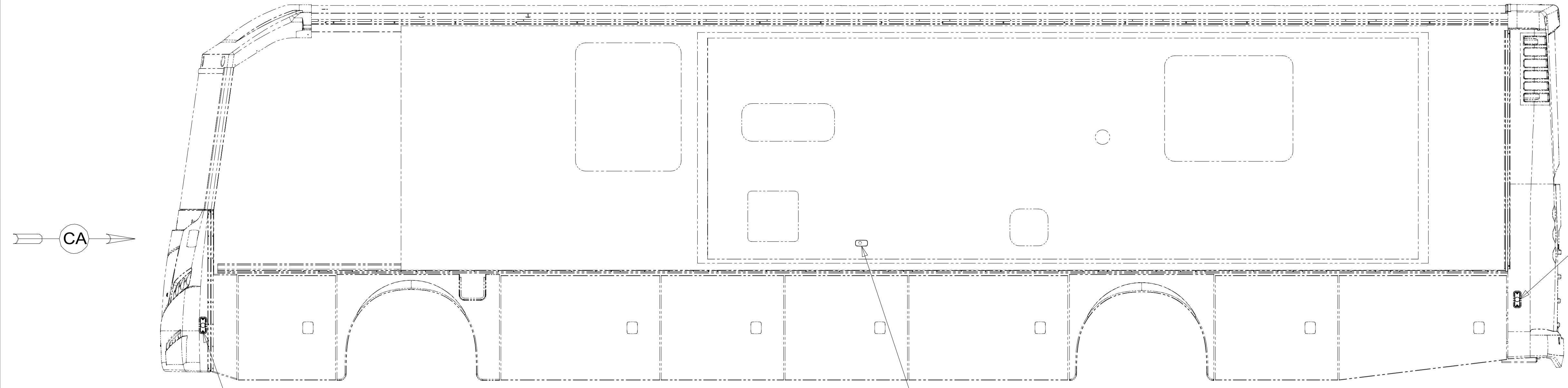
C

B

B

A

A



CA

LAMP ASM-SIDEMARKER,AMBER  
171195-02-000  
SCREW  
G11-08-12U (2)

LAMP-MARKER,W AMBER LENS,BLK  
193802-03-000  
SCREW  
G11-08-12U (EXT) (2)  
CONNECTOR  
58028-01-000 (4)

LAMP ASM-MARKER,RED  
171195-01-000  
SCREW  
G11-08-12U (2)



BA

LAMP ASM-MARKER,RED  
171195-01-000  
SCREW  
G11-08-12U (2)

LAMP-MARKER,W AMBER LENS,BLK  
193802-03-000  
SCREW  
G11-08-12U (EXT) (2)  
CONNECTOR  
58028-01-000 (4)

LAMP ASM-PORCH  
191677-01-000

LAMP ASM-SIDEMARKER,AMBER  
171195-02-000  
SCREW  
G11-08-12U (2)

8 7 6 5 4 3 2 1

265 CODES/STANDARDS-CSA/CMVSS

1B1 CODES/STANDARDS USA

1B1 265



COPYRIGHT 2016 WINNEBAGO INDUSTRIES, INC.

DSNR:		ALL DIMENSIONS ARE IN MILLIMETERS	
DIFTR:		MATERIAL:	
UNSPECIFIED TOLERANCES:		WEIGHT: (LBS)	FIRST USED:
WHOLE DIM (X)	: 3		16 L36G
ONE-PLACE (X.X)	: 1.5		
TWO-PLACE (X.XX)	: 0.50		
ANGLE	: 1°		

REFER TO ES0018 FOR FASTENER TIGHTENING GUIDELINES

DESCRIPTION: **WIRING INSTL-EXTERIOR LAMPS**

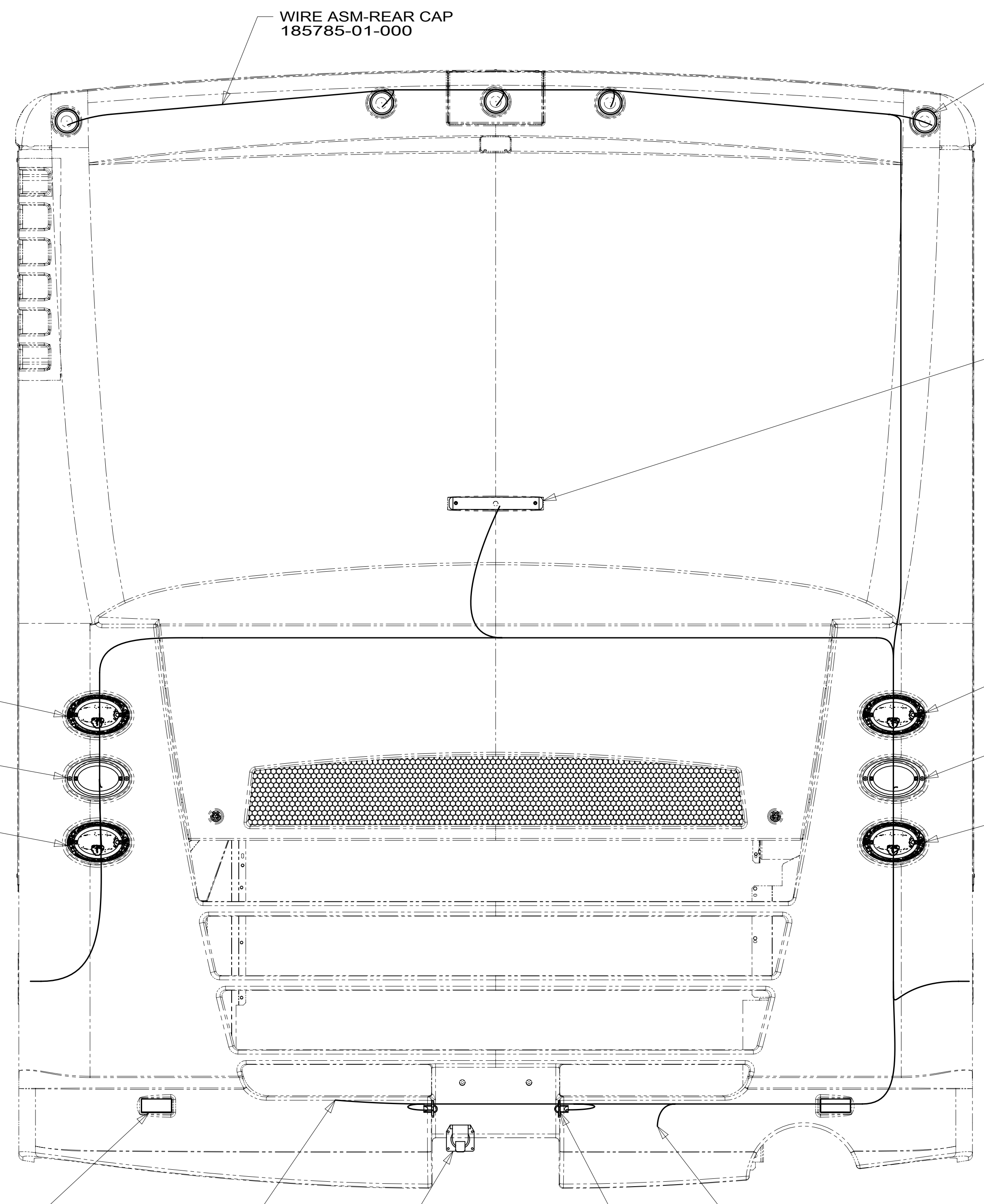
SHEET: 1 OF 3 ITEM/PART NO: 000174635 / 30138201000 REV

FOR ELECTRICAL TORQUE SPECIFICATIONS SEE DWG NO. 128783-01-000

X-X FOR ELECTRICAL CALLOUTS SEE DWG NO. 121339-01-000

8 7 6 5 4 3 2 1

D  
C  
B  
A



WIRE ASM-REAR CAP  
185785-01-000

LAMP ASM-CLEARANCE,RED  
138996-02-000 (5)  
BRACKET-LAMP,CLEARANCE  
138996-03-000 (5)  
SCREW  
G39-08-16U (EXT) (10)

LIGHT-THIRD BRAKE  
136916-01-000  
SCREW  
G39-06-16U (2)

LAMP-STOP/TURN/TAIL  
172560-02-000

LAMP ASM-TURN  
172560-06-000

LAMP-BACKUP  
172560-04-000

LAMP-STOP/TURN/TAIL  
172560-01-000

LAMP ASM-TURN  
172560-05-000

LAMP-BACKUP  
172560-03-000

1 REFLECTOR  
106646-02-000 (2)

2-PIN HOUSING  
TO WIRE ASM-CHASSIS

TRAILER CONNECTOR,  
WIRING AND FASTENERS  
(CHASSIS SUPPLIED)

8 PIN HOUSING  
TO FREIGHTLINER  
CHASSIS WIRING

LAMP-LICENSE  
87201-01-000 (2)  
SCREW  
G11-06-12U (EXT) (4)

VIEW BA

1 REMOVE PAPER BACKING FROM REFLECTOR AND PREP APPLICATION SURFACE WITH ISOPROPYL ALCOHOL WIPE BEFORE INSTALLATION.

NOTES:

FOR ELECTRICAL TORQUE SPECIFICATIONS SEE DWG NO. 128783-01-000

FOR ELECTRICAL CALLOUTS SEE DWG NO. 121339-01-000

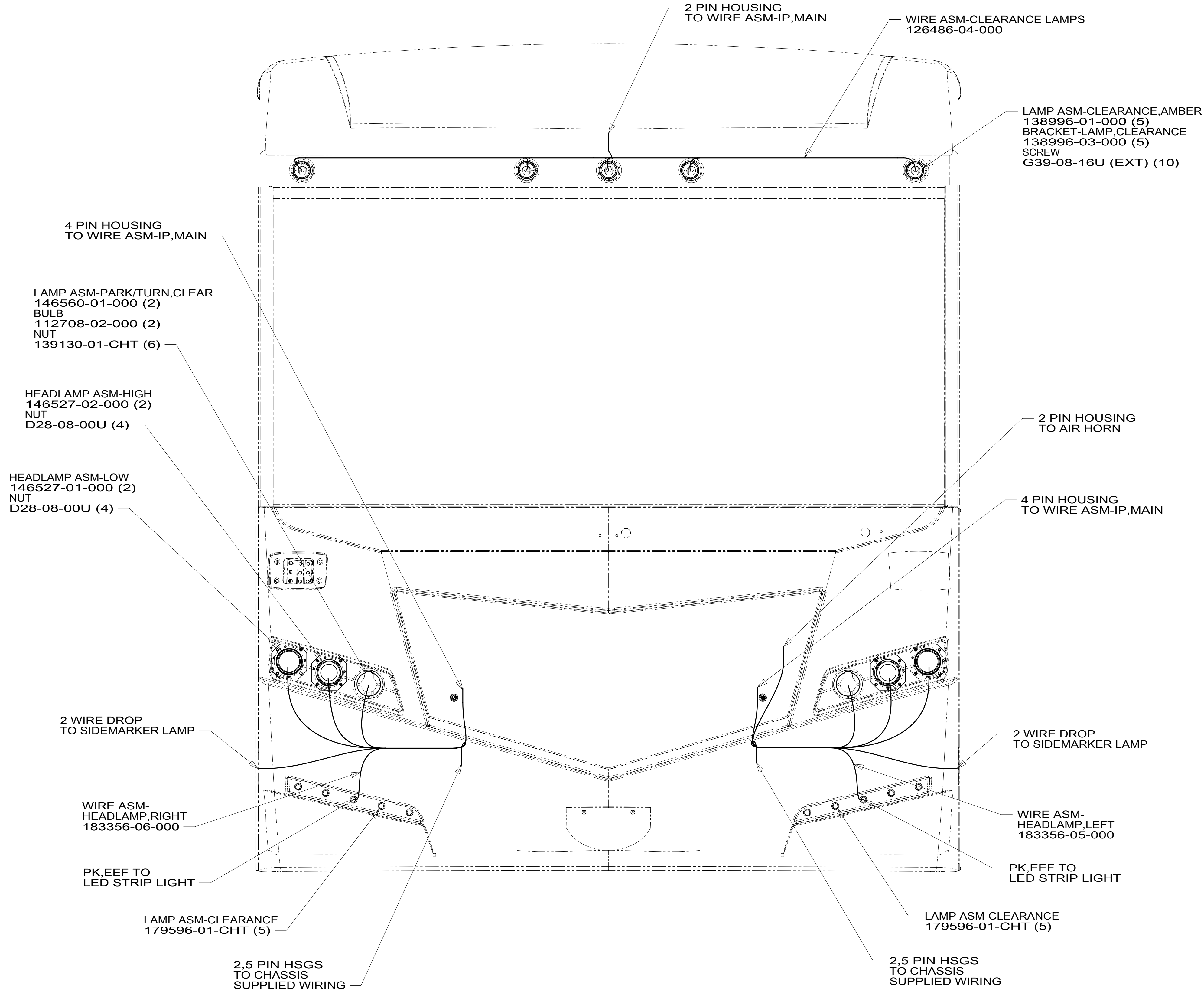
265 CODES/STANDARDS-CSA/CMVSS  
1B1 CODES/STANDARDS USA

DESCRIPTION:	1B1 265	
<b>WIRING INSTL-EXTERIOR LAMPS</b>		
SHEET:	ITEM/PART NO.:	REV
2 OF 3	000174635 / 30138201000	

8 7 6 5 4 3 2 1 16-Nov-2016

8 7 6 5 4 3 2 1

D  
C  
B  
A



VIEW CA

FOR ELECTRICAL TORQUE SPECIFICATIONS SEE DWG NO. 128783-01-000

FOR ELECTRICAL CALLOUTS SEE DWG NO. 121339-01-000

265 CODES/STANDARDS-CSA/CMVSS  
1B1 CODES/STANDARDS USA

DESCRIPTION:	1B1 265	
<b>WIRING INSTL-EXTERIOR LAMPS</b>		
SHEET:	ITEM/PART NO.:	REV
3 OF 3	000174635 / 30138201000	

8 7 6 5 4 3 2 1 16-Nov-2016