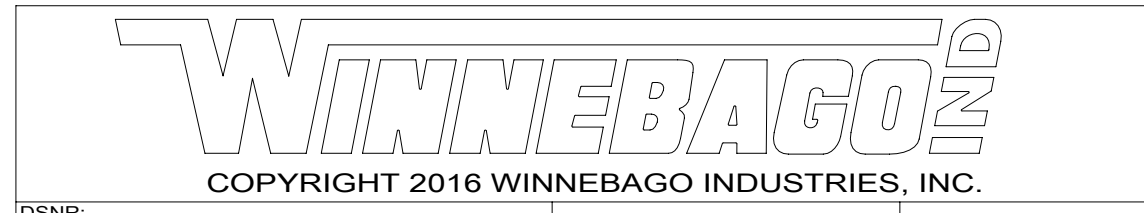


FOR ELECTRICAL TORQUE SPECIFICATIONS SEE DWG NO. 128783-01-000

X-X FOR ELECTRICAL CALLOUTS SEE DWG NO. 121339-01-000

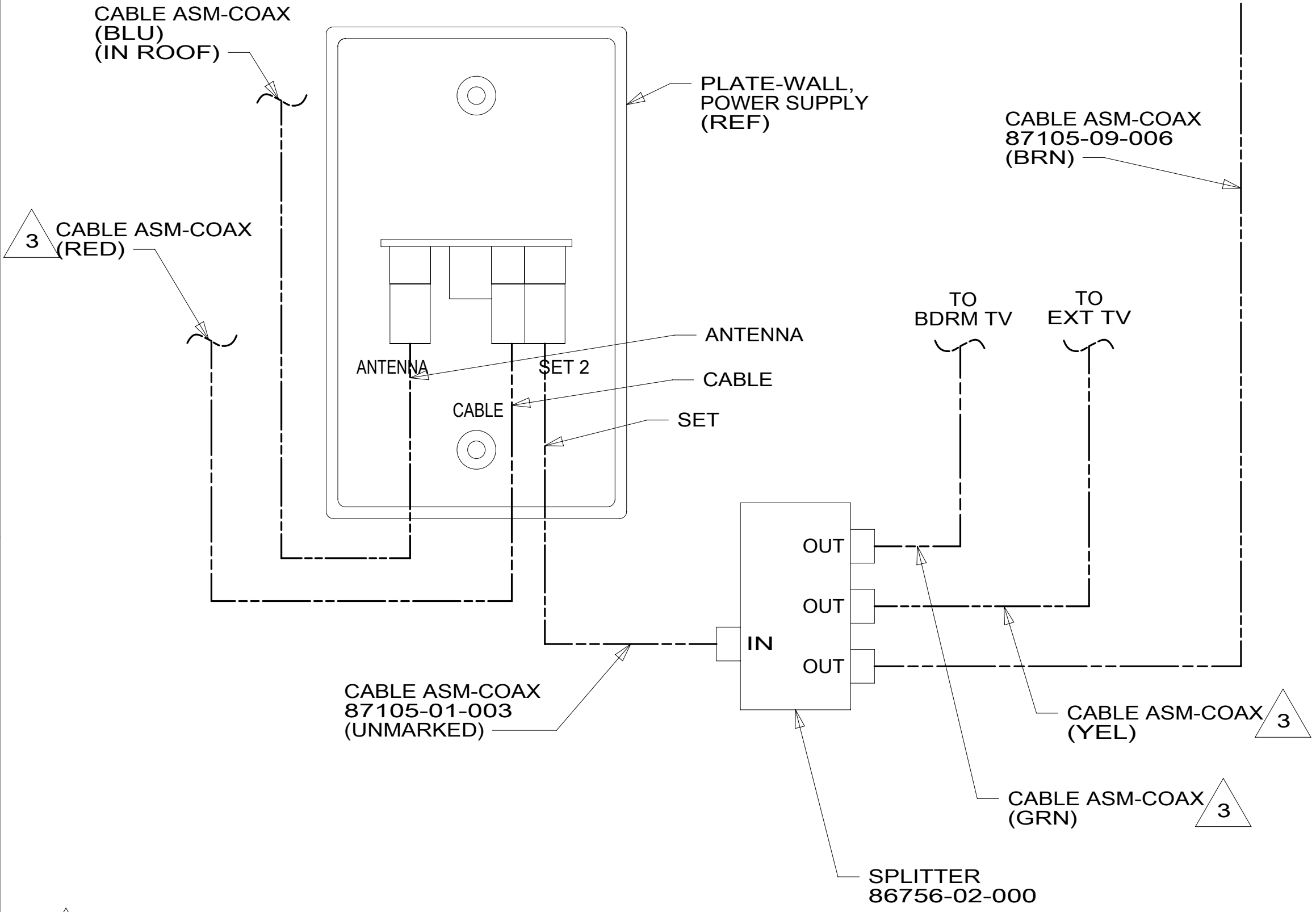
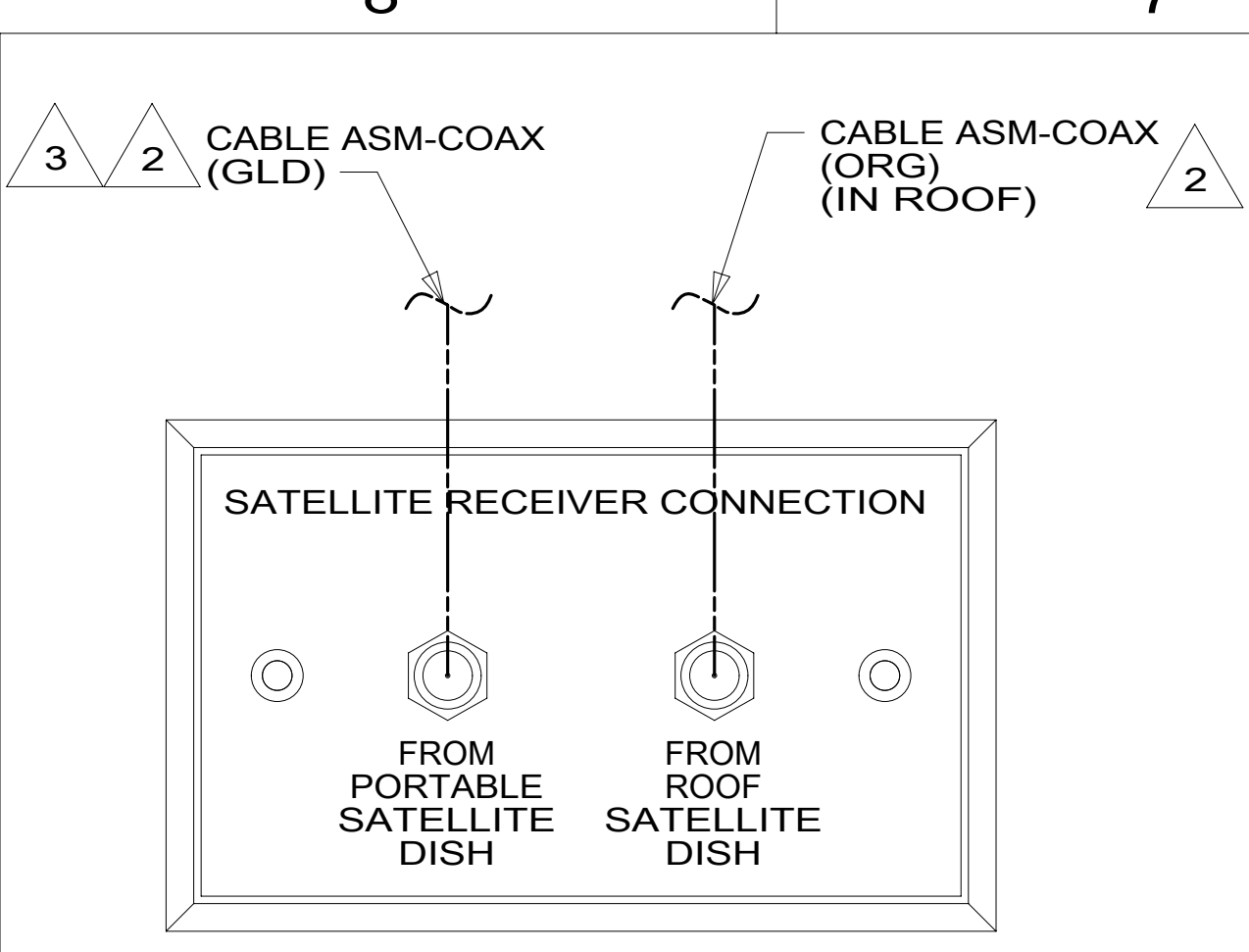
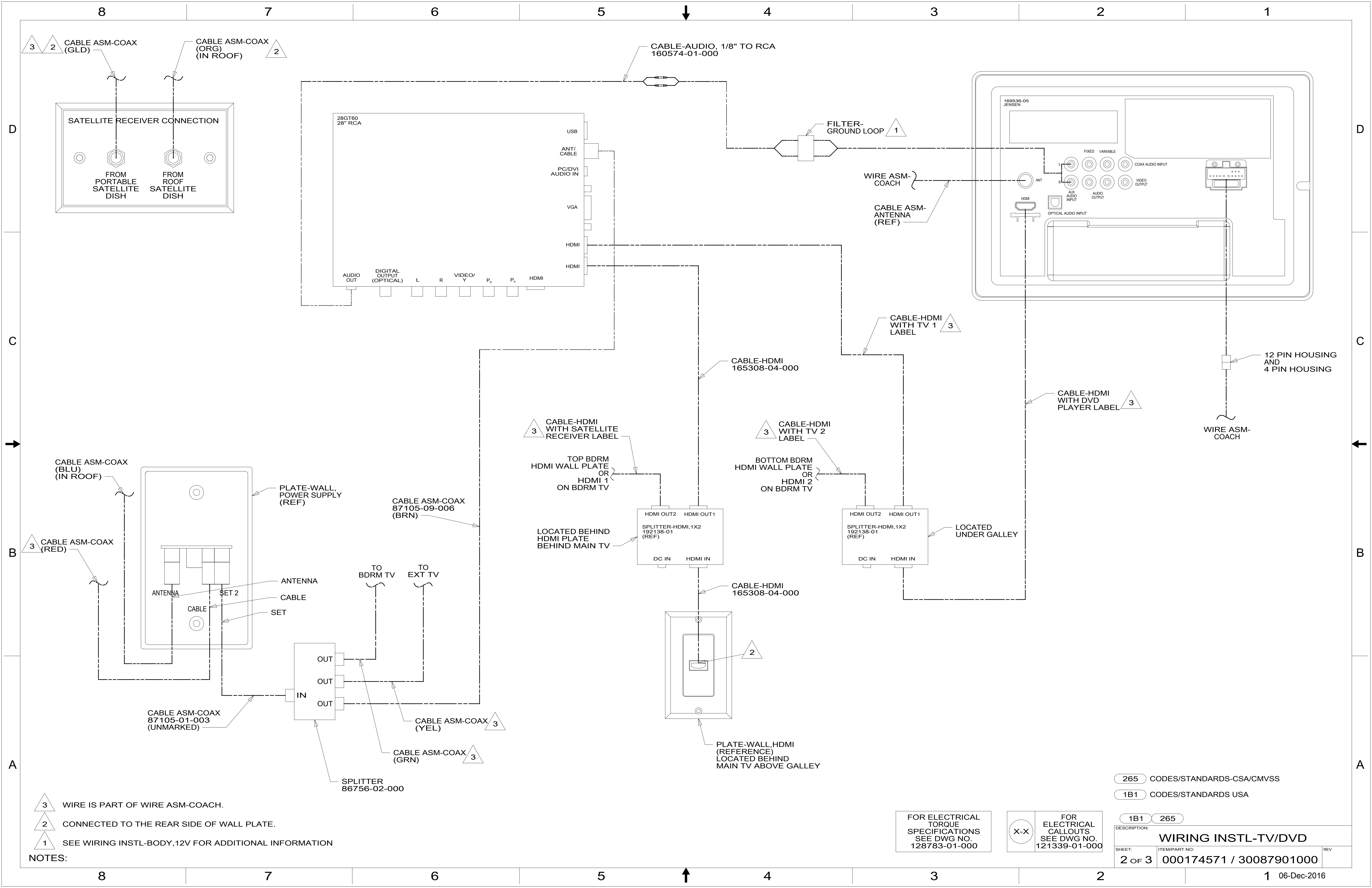
- 265 CODES/STANDARDS-CSA/CMVSS
- 1B1 CODES/STANDARDS USA
- 1B1 265



DSNR:	ALL DIMENSIONS ARE IN MILLIMETERS	
DFFR:		
UNSPECIFIED TOLERANCES:	MATERIAL:	
WHOLE DIM (X) : 3		
ONE-PLACE (X.X) : 1.5		
TWO-PLACE (X.XX) : 0.50		
ANGLE : 1°		
REFER TO ES0018 FOR FASTENER TIGHTENING GUIDELINES	WEIGHT: (LBS)	FIRST USED:
		16 524V

DESCRIPTION: <b>WIRING INSTL-TV/DVD</b>		
SHEET: 1 OF 3	ITEM/PART NO: 000174571 / 30087901000	REV:

- NOTES:
- 3 PREP BOTH SURFACES WITH ADHESIVE PROMOTER 087211-01-000.
  - 2 SEE WIRING INSTL-BODY, 110V FOR ADDITIONAL INFORMATION.
  - 1 SEE WIRING INSTL-BODY, 12V FOR ADDITIONAL INFORMATION.



- NOTES:
- 3 WIRE IS PART OF WIRE ASM-COACH.
  - 2 CONNECTED TO THE REAR SIDE OF WALL PLATE.
  - 1 SEE WIRING INSTL-BODY, 12V FOR ADDITIONAL INFORMATION

265 CODES/STANDARDS-CSA/CMVSS  
 1B1 CODES/STANDARDS USA

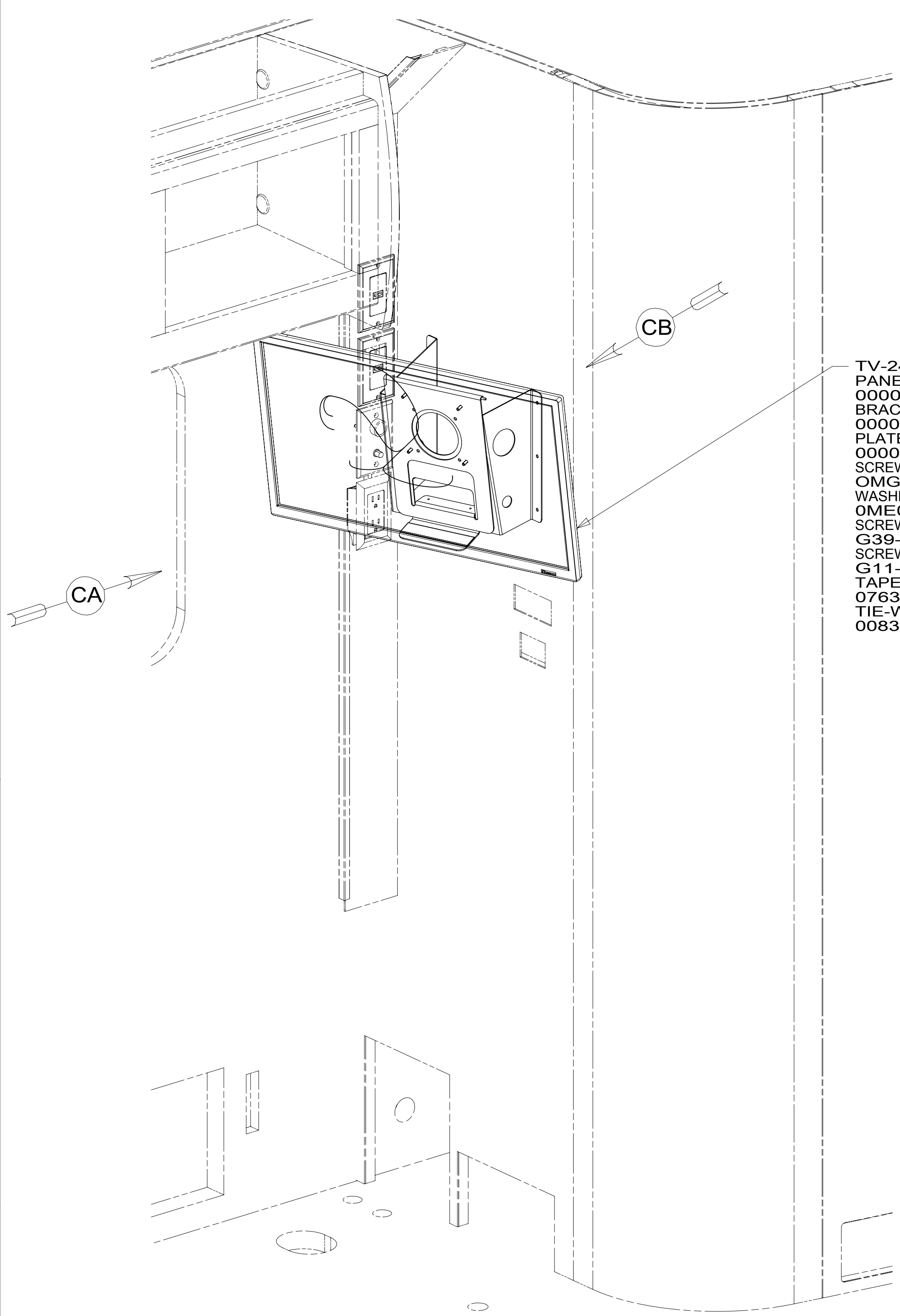
FOR ELECTRICAL TORQUE SPECIFICATIONS SEE DWG NO. 128783-01-000

FOR ELECTRICAL CALLOUTS SEE DWG NO. 121339-01-000

DESCRIPTION:		1B1 265	
<b>WIRING INSTL-TV/DVD</b>			
SHEET:	ITEM/PART NO.:	REV	
2 OF 3	000174571 / 30087901000		

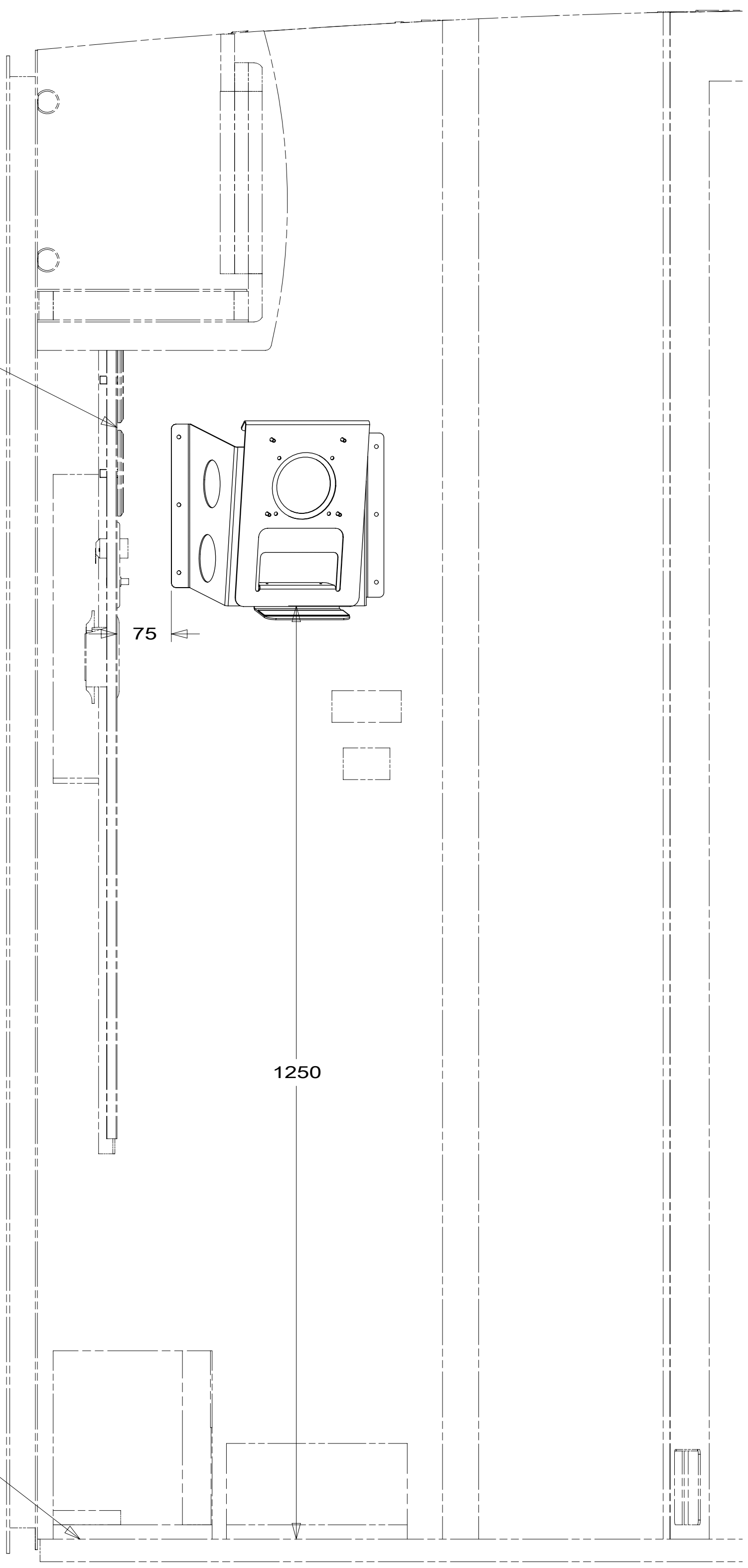
8 7 6 5 4 3 2 1

D  
C  
B  
A



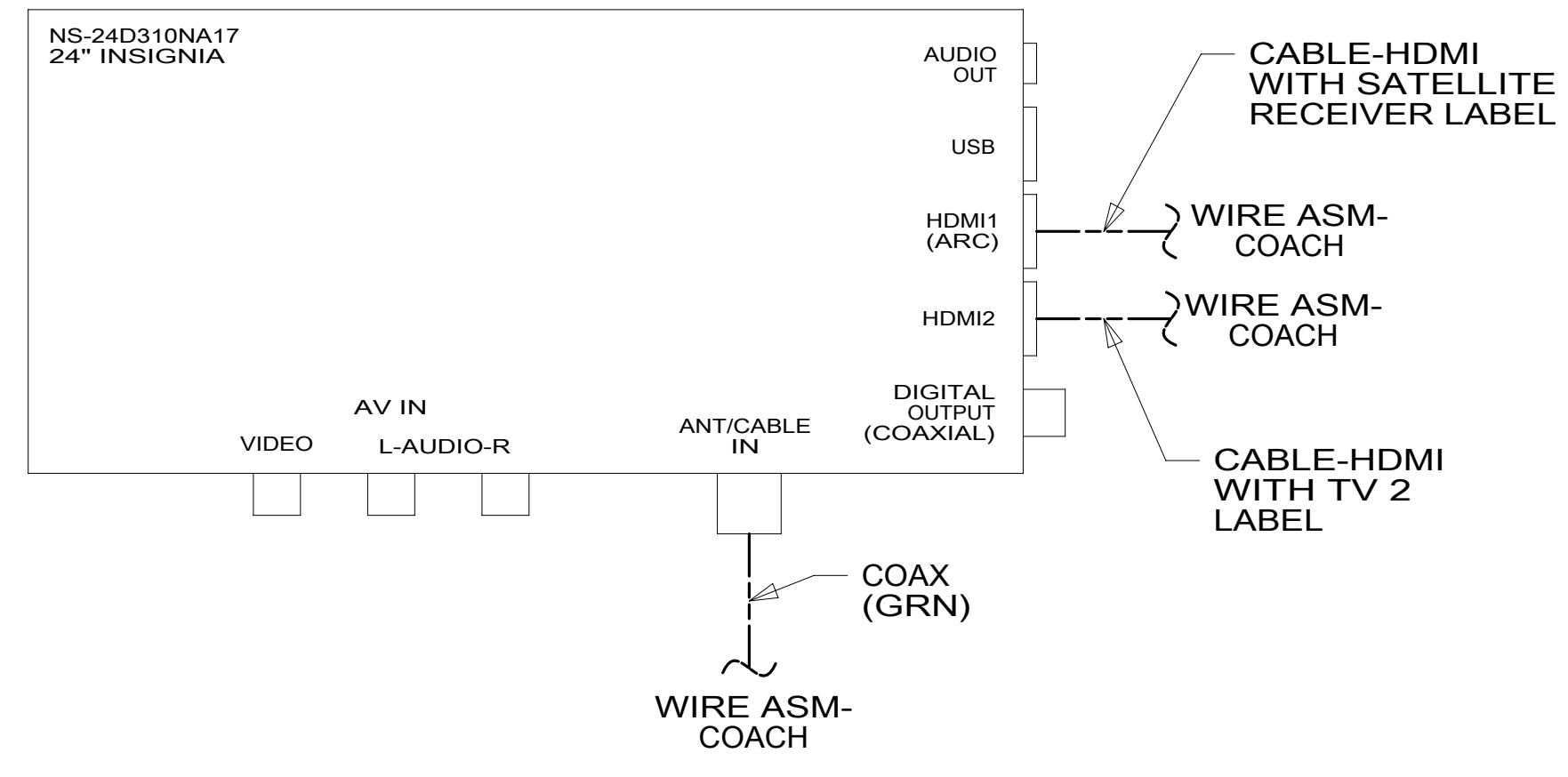
CABINET ASM-PIPE COVER (REFERENCE)

- TV-24" FLAT PANEL DLED, HDTV 000032947 / 317377-01-000
- BRACKET-TV 000033446 / 317571-01-CHT
- PLATE-MOUNTING 000032972 / 317364-01-CHT
- SCREW OMG02U-04-12U (4)
- WASHER OME02U-04-071 (4)
- SCREW G39-10-12U (8)
- SCREW G11-08-16U (2)
- TAPE-FOAM, DBL COATED.045X1.0 076322-23-000 (120 MM)
- TIE-WIRE 008343-01-000



FLOOR (REFERENCE)

VIEW CA



VIEW CB

- 68X TV - BEDROOM
- 265 CODES/STANDARDS-CSA/CMVSS
- 1B1 CODES/STANDARDS USA

FOR ELECTRICAL TORQUE SPECIFICATIONS SEE DWG NO. 128783-01-000

FOR ELECTRICAL CALLOUTS SEE DWG NO. 121339-01-000

DESCRIPTION:	1B1 265 68X	
<b>WIRING INSTL-TV/DVD</b>		
SHEET:	ITEM/PART NO:	REV
3 OF 3	000174571 / 30087901000	

8 7 6 5 4 3 2 1 06-Dec-2016