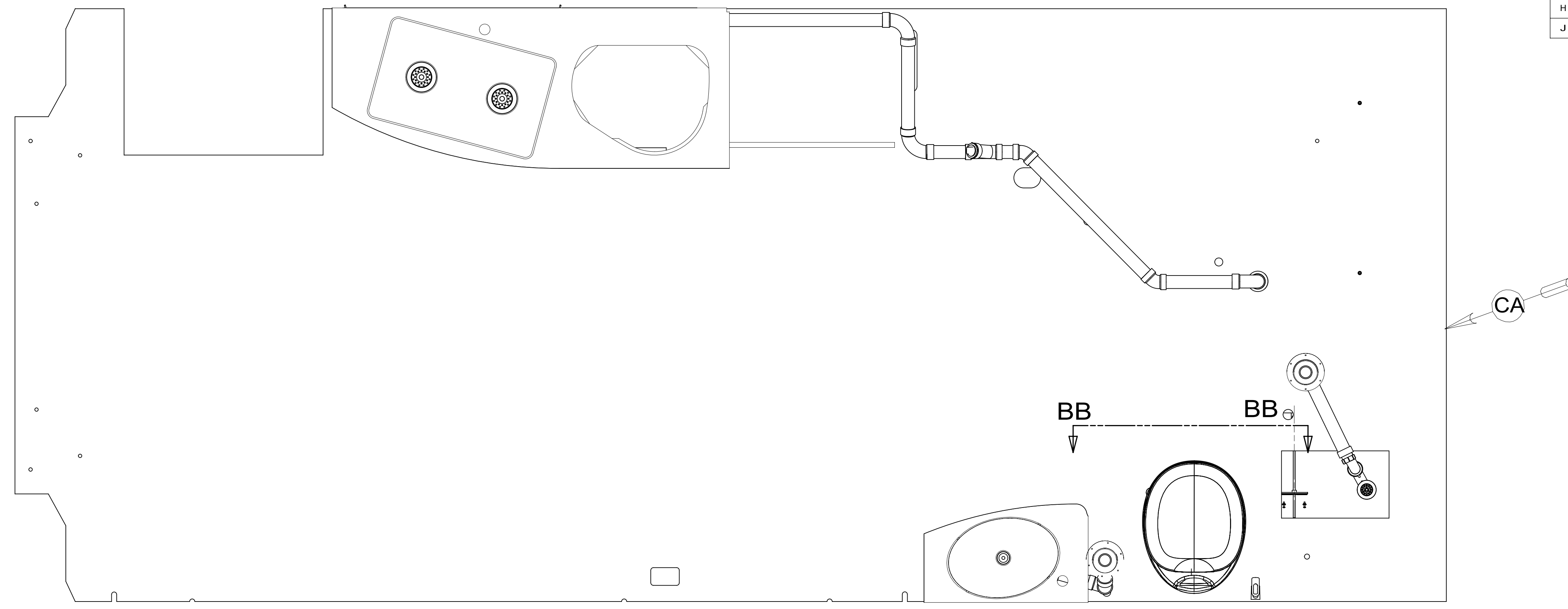


REV	ZONE	REVISION RECORD	DATE	DFTR-ORIG
A	---	INITIAL RELEASE	10/05/15	3650-3660
B	S3CB	P-1 WAS P-2, 1/295 WAS 1/220, 1/50 WAS 1/60, A-15 WAS A-8	02/03/16	3650-2314
C	S2C4	1/175 WAS 1/180	03/18/16	3650-5472
D	SHT2	NEW GALLEY SINK	05/31/16	3650-3660
E	SH1-2	ADD DELTA 9, ADD SCREWS 0MGG2U-04-030 (6) & 000G13-07-12U (6)	07/29/16	3660
F	SHT4	NEW TANK	09/28/16	3650
G	SHT4	COST SAVINGS SUGGESTION # 6252	10/06/16	2183
H	S2D4	CHG VM-1 TO VM-2	6/2/17	4707
J	SHT2	CHG W-2 TO W-3	9-1-17	8378-1600



FRONT OF COACH

- 9 REPLACE SUPPLIED STUD AND WINGNUT WITH FASTENER AND INSTALL WITH SUPPLIED RETAINING ANGLE.
- 8 PREPARE THE SURFACE PER MANUFACTURERS INSTRUCTIONS BEFORE APPLYING THE HEATING PAD.
- 7 USE SMOOTH PLUMBERS PUTTY 167459-01-000 TO SEAL STRAINER (.2 PER STAINER).
- 6 VENT PIPE MUST PROJECT 51 MIN AND 64 MAX ABOVE ROOF FOR PROPER FIT AND FUNCTION.
- 5. SEAL AROUND SHOWER WITH SILICONE.
- 4 SECURE VENT PIPE TO FLOOR WITH CLAMP 062401-02-000 (2), SCREW 000G67-10-12U (2), BRACKET 136878-01-CHT (2).
- 3. ALL PIPE AND FITTINGS TO BE ASSEMBLED WITH SOLVENT 004020-01-000 (USA), 004020-02-000 (CAN).
- 2. SLOPE OF TRAP ARM MUST BE 6 PER 305 mm.
- 1. SLOPE OF HORIZONTAL PIPING TO BE MIN 3 PER 305 mm.

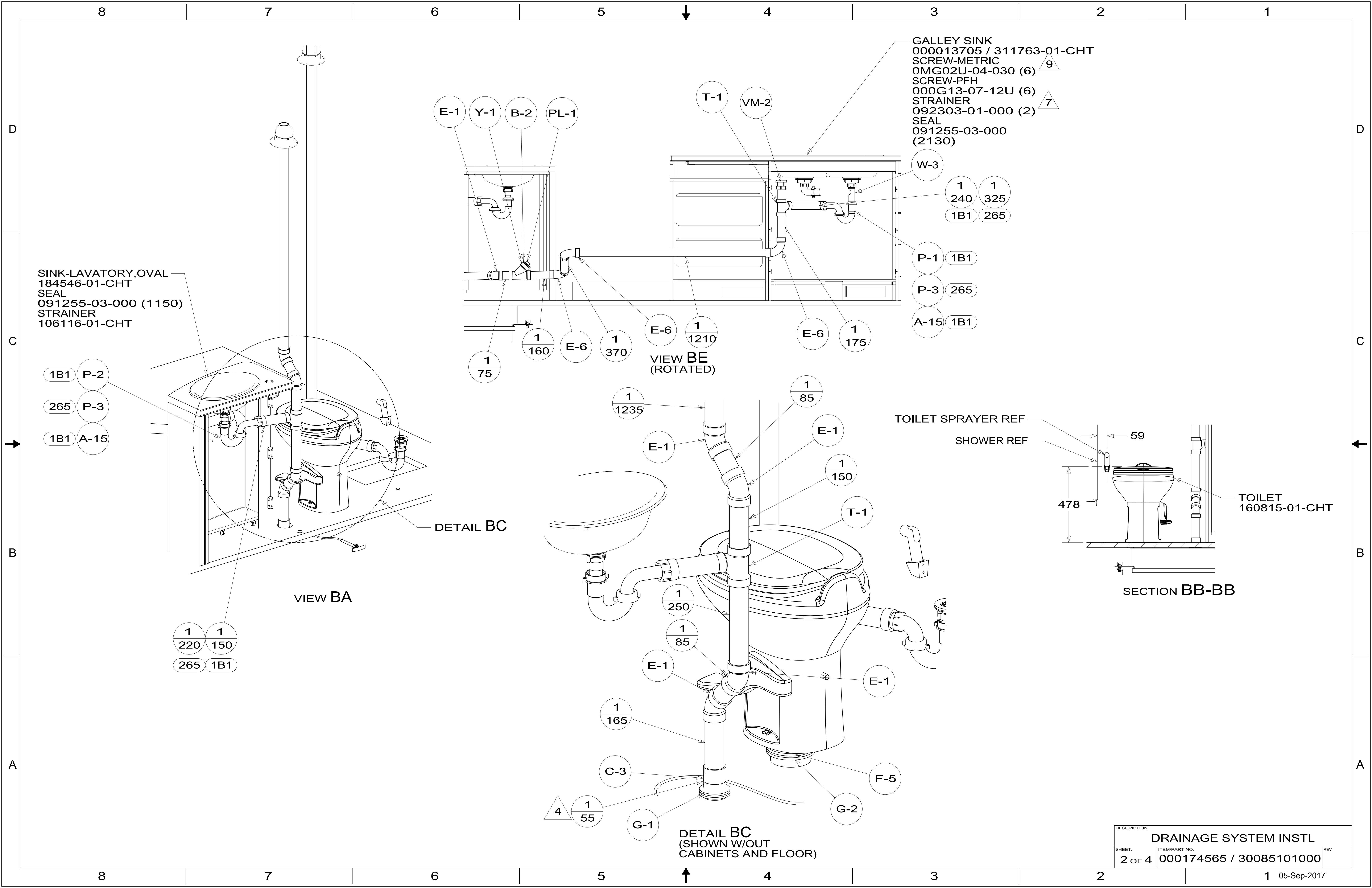
NOTES:

- 1B1 CODES/STANDARDS USA
- 265 CODES/STANDARDS-CSA/CMVSS
- 23T DRAINAGE SYSTEM-HEATED
- 1JD DRAINAGE SYSTEM-HEATED-W/O



DSNR:		ALL DIMENSIONS ARE IN MILLIMETERS	
DFTR:			
UNSPECIFIED TOLERANCES:		MATERIAL:	
WHOLE DIM (X)	3		
ONE-PLACE (X.X)	1.5		
TWO-PLACE (X.XX)	0.50		
ANGLE	1°		
REFER TO ES0018 FOR FASTENER TIGHTENING GUIDELINES		WEIGHT: (LBS)	FIRST USED: (REF)
			16 524J
DESCRIPTION: DRAINAGE SYSTEM INSTL			
SHEET:	ITEM/PART NO.:	REV	
1 OF 4	000174565 / 30085101000		

FOR DRAINAGE CALLOUTS SEE DWG NO. 000211962 / 303370-01-000



SINK-LAVATORY, OVAL
 184546-01-CHT
 SEAL
 091255-03-000 (1150)
 STRAINER
 106116-01-CHT

GALLEY SINK
 000013705 / 311763-01-CHT
 SCREW-METRIC
 0MG02U-04-030 (6)
 SCREW-PFH
 000G13-07-12U (6)
 STRAINER
 092303-01-000 (2)
 SEAL
 091255-03-000
 (2130)

- 1B1 P-2
- 265 P-3
- 1B1 A-15

- 1 220
- 1 150
- 265 1B1

- E-1
- Y-1
- B-2
- PL-1

- T-1
- VM-2

- W-3
- 1 240
- 1 325
- 1B1 265

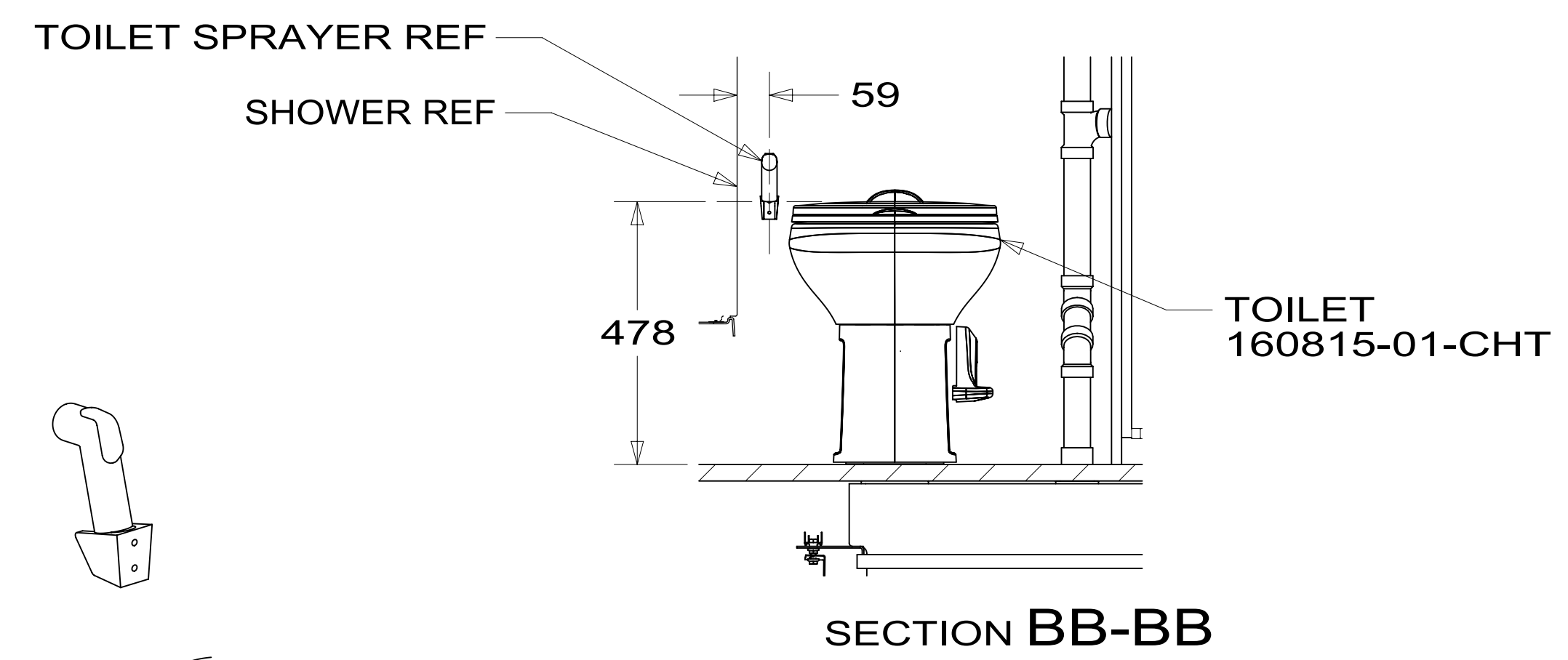
- P-1 1B1
- P-3 265
- A-15 1B1

- 1 75
- 1 160
- E-6
- 1 370
- E-6
- 1 1210
- E-6
- 1 175

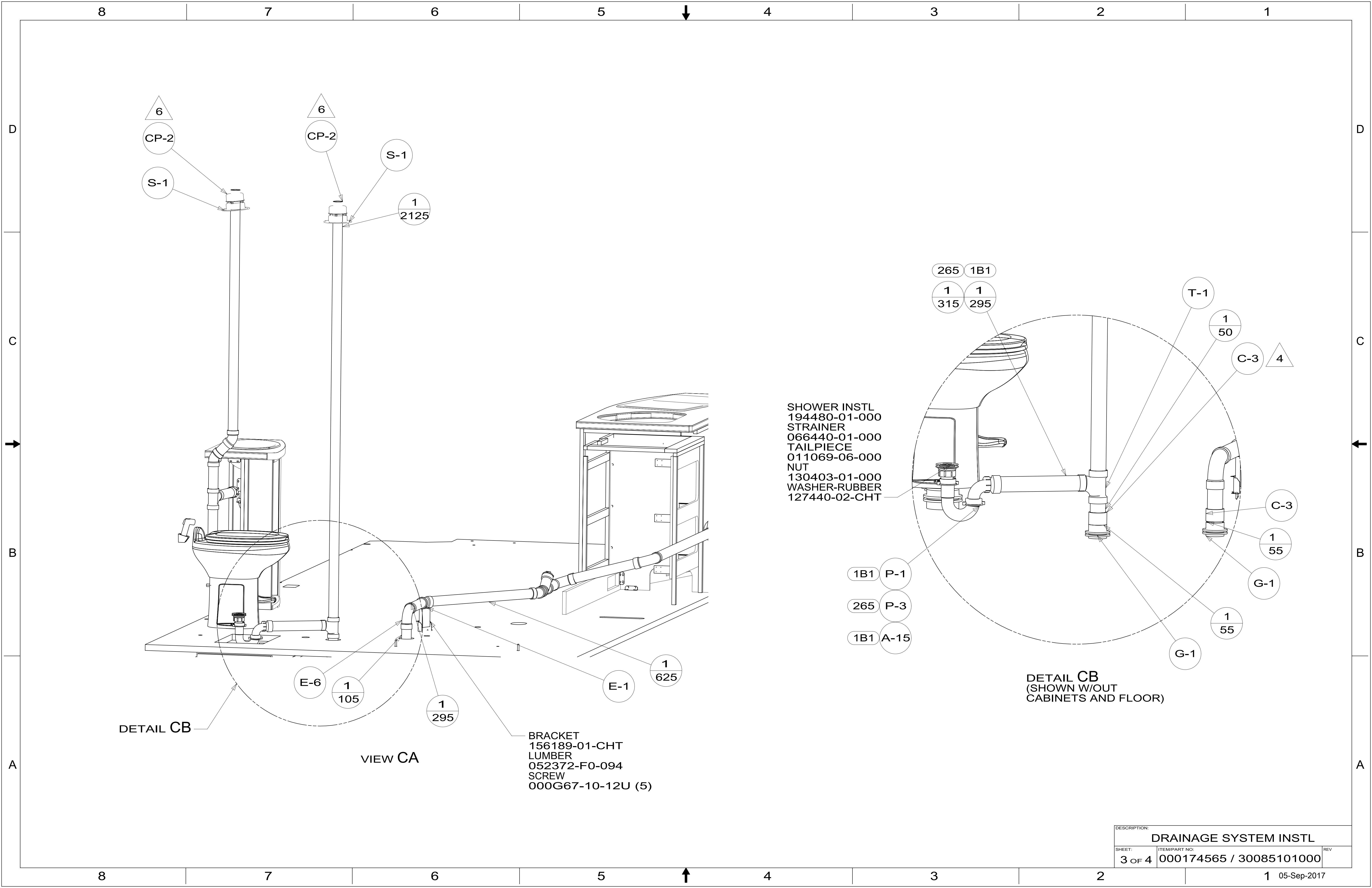
VIEW BE
 (ROTATED)

- 1 1235
- 1 85
- E-1
- 1 150
- T-1
- 1 250
- 1 85
- E-1
- 1 165
- C-3
- 1 55
- G-1
- E-1
- F-5
- G-2

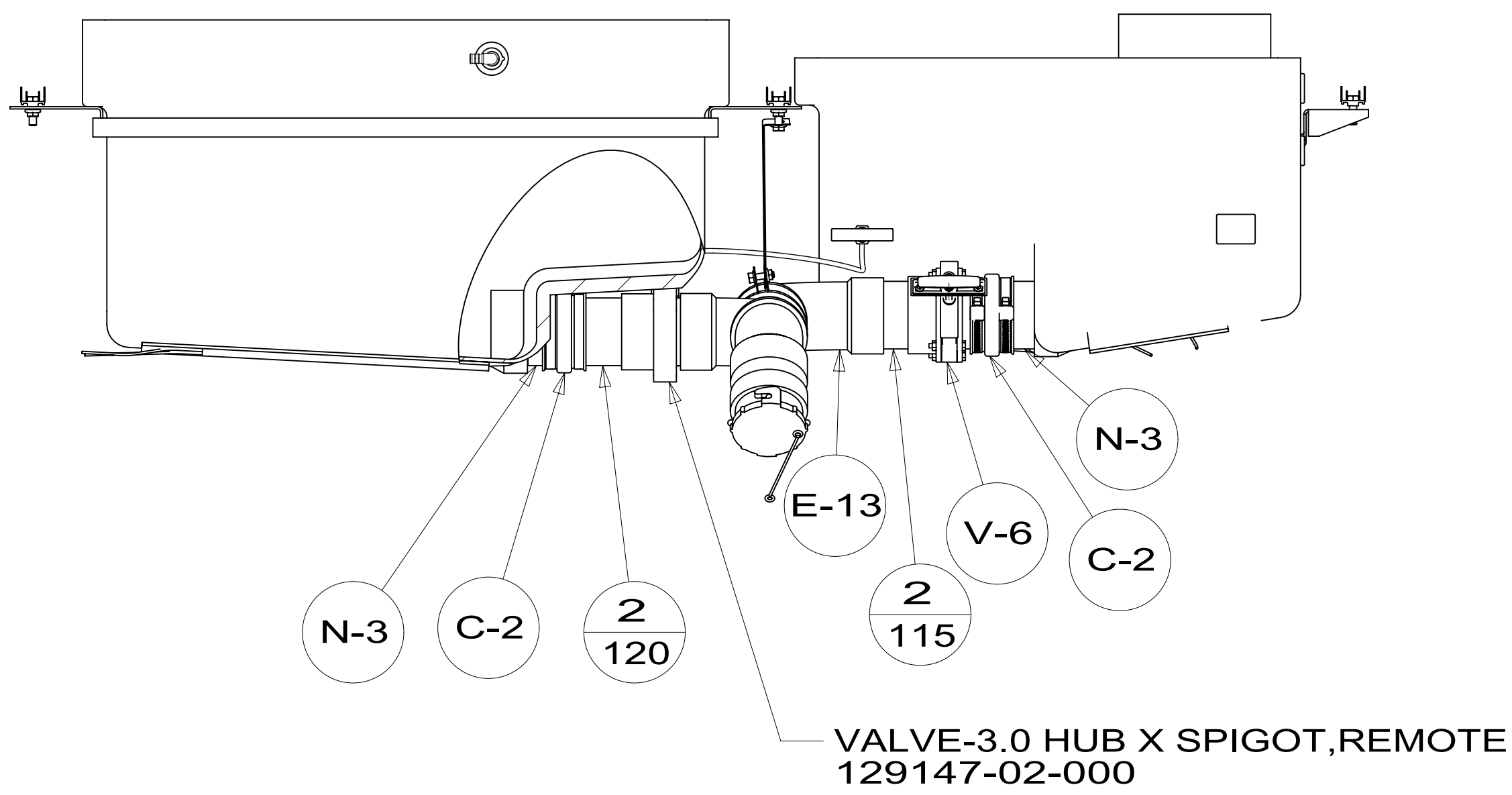
DETAIL BC
 (SHOWN W/OUT
 CABINETS AND FLOOR)



DESCRIPTION: DRAINAGE SYSTEM INSTL		
SHEET: 2 OF 4	ITEM/PART NO: 000174565 / 30085101000	REV

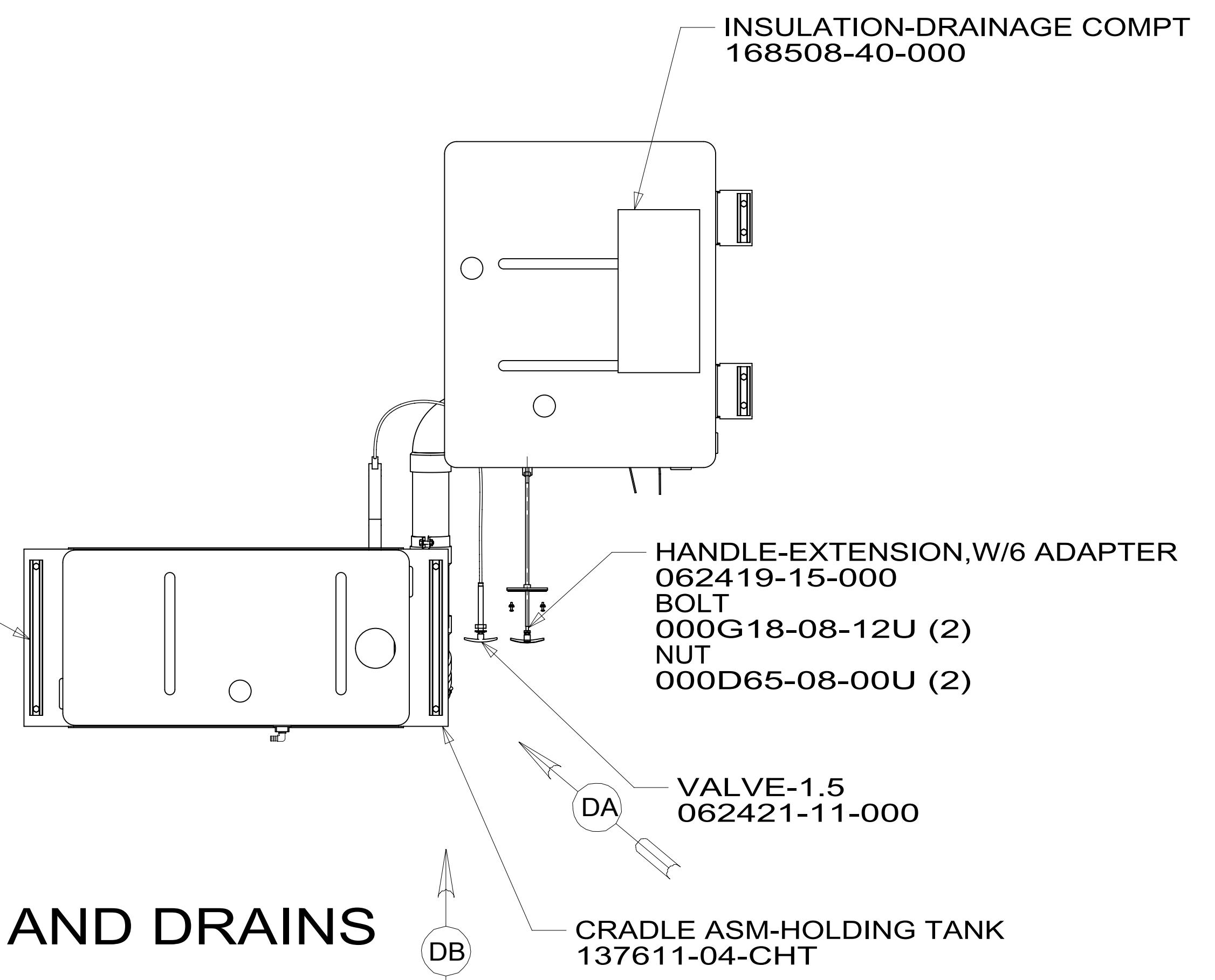


8 7 6 5 4 3 2 1

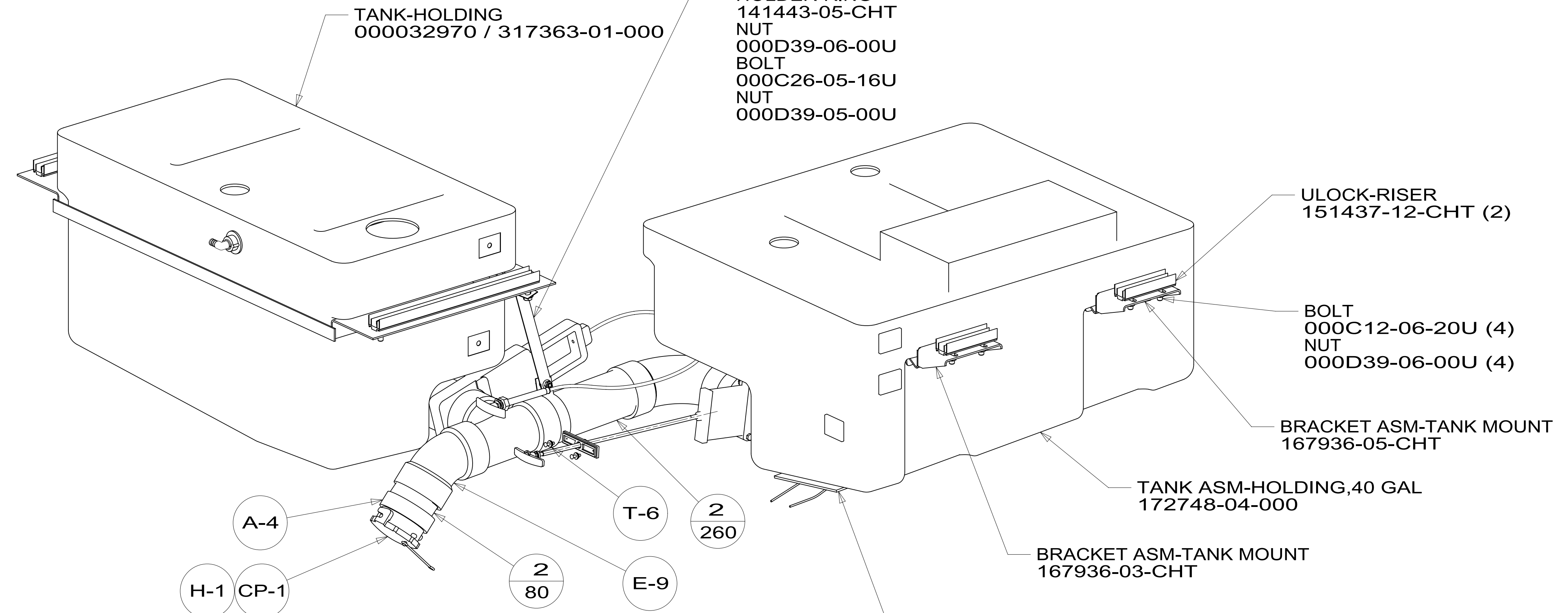


VIEW DB

- ULOCK-RISER 151437-10-CHT (2)
- BOLT 000C12-06-20U (4)
- NUT 000D39-06-00U (4)



SHOWING TANKS AND DRAINS



VIEW DA

8 7 6 5 4 3 2 1

DESCRIPTION:		
DRAINAGE SYSTEM INSTL		
SHEET:	ITEM/PART NO:	REV
4 OF 4	000174565 / 30085101000	