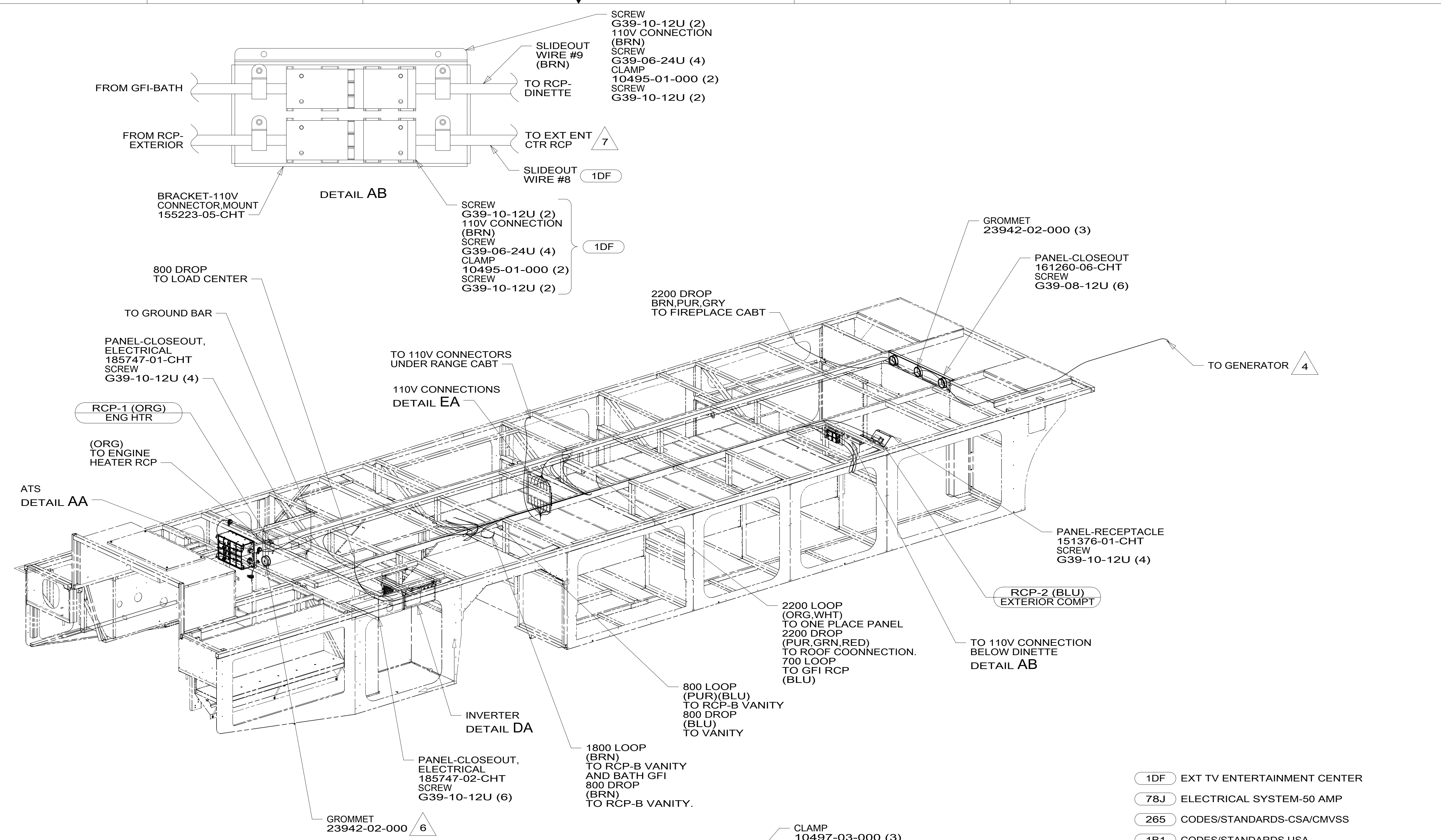
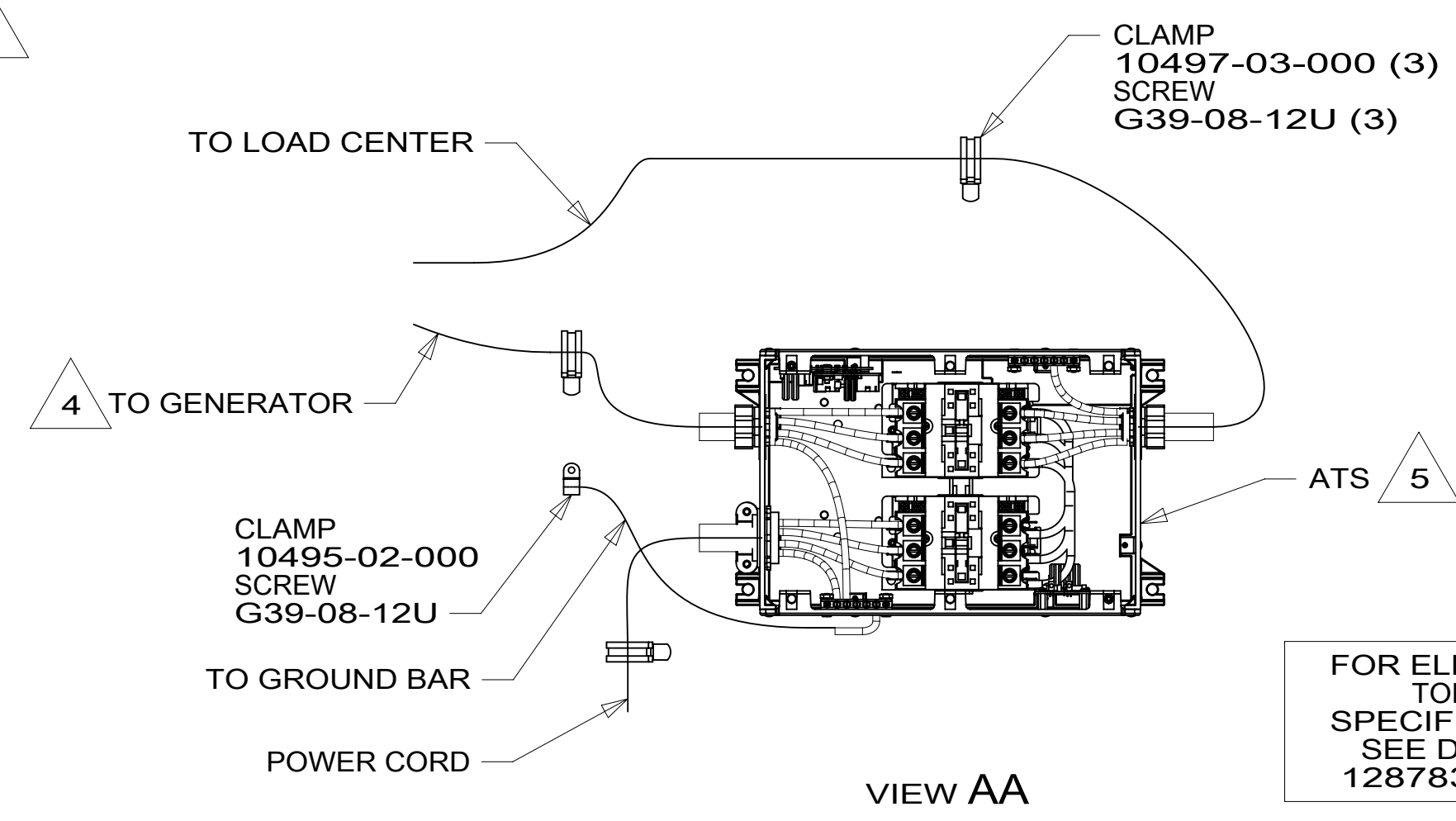


DRAWING NO.	FEATURES
301403-12	1B1 78J
301403-16	265 78J



- 7 WIRE IN SIDEWALL.
- 6 ROUTE ENGINE HEATER POWER CORD THROUGH GROMMET.
- 5 SEE LOAD CENTER/ATS ASM FOR ADDITIONAL INFORMATION.
- 4 SEE GENERATOR INSTL FOR ADDITIONAL INFORMATION.
3. WIRES THAT REST ON WIRE TRAYS ARE TO BE TIED DOWN WITH WIRE TIE 8343-04-000.
2. CLAMP TO FLOOR SUPPORT TUBES AS NECESSARY WITH CLAMP 10497-01-000.
1. AT MINIMUM ALL WIRES TO BE SUPPORTED AND SECURED PER CODE REQUIREMENTS. USE CLAMP 10495 OR 10497 OR WIRE TIE 8343 OR 108046 AND SCREW G67-XX-XXX OR G56-XX-XXX AS APPROPRIATE FOR INSTALLATION.



- 1DF EXT TV ENTERTAINMENT CENTER
- 78J ELECTRICAL SYSTEM-50 AMP
- 265 CODES/STANDARDS-CSA/CMVSS
- 1B1 CODES/STANDARDS USA

1B1 265

**WINNEBAGO**  
COPYRIGHT 2016 WINNEBAGO INDUSTRIES, INC.

DSNR:	ALL DIMENSIONS ARE IN MILLIMETERS
DFFR:	MATERIAL:
UNSPECIFIED TOLERANCES:	WEIGHT: (LBS)
WHOLE DIM (X) : 3	FIRST USED:
ONE-PLACE (X.X) : 1.5	16 L36G
TWO-PLACE (X.XX) : 0.50	
ANGLE : 1°	

REFER TO ES0018 FOR FASTENER TIGHTENING GUIDELINES

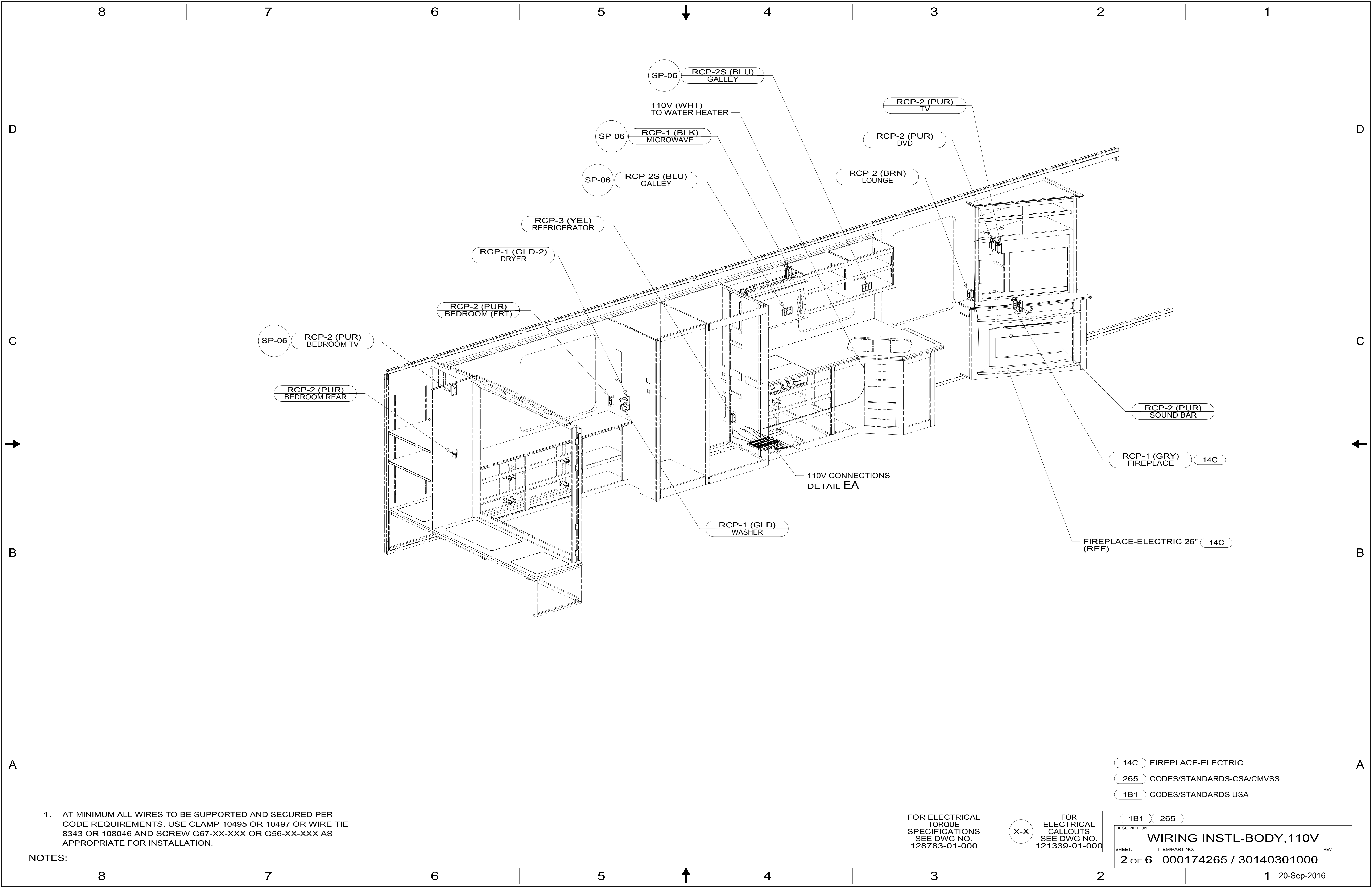
DESCRIPTION: **WIRING INSTL-BODY, 110V**

SHEET: 1 OF 6 ITEM/PART NO: 000174265 / 30140301000 REV

REF: 1 20-Sep-2016

FOR ELECTRICAL TORQUE SPECIFICATIONS SEE DWG NO. 128783-01-000

FOR ELECTRICAL CALLOUTS SEE DWG NO. 121339-01-000



SP-06 RCP-2S (BLU) GALLEY

110V (WHT) TO WATER HEATER

RCP-2 (PUR) TV

SP-06 RCP-1 (BLK) MICROWAVE

RCP-2 (PUR) DVD

SP-06 RCP-2S (BLU) GALLEY

RCP-2 (BRN) LOUNGE

RCP-3 (YEL) REFRIGERATOR

RCP-1 (GLD-2) DRYER

RCP-2 (PUR) BEDROOM (FRT)

SP-06 RCP-2 (PUR) BEDROOM TV

RCP-2 (PUR) BEDROOM REAR

RCP-2 (PUR) SOUND BAR

RCP-1 (GRY) FIREPLACE 14C

110V CONNECTIONS  
DETAIL EA

RCP-1 (GLD) WASHER

FIREPLACE-ELECTRIC 26" 14C (REF)

- 14C FIREPLACE-ELECTRIC
- 265 CODES/STANDARDS-CSA/CMVSS
- 1B1 CODES/STANDARDS USA

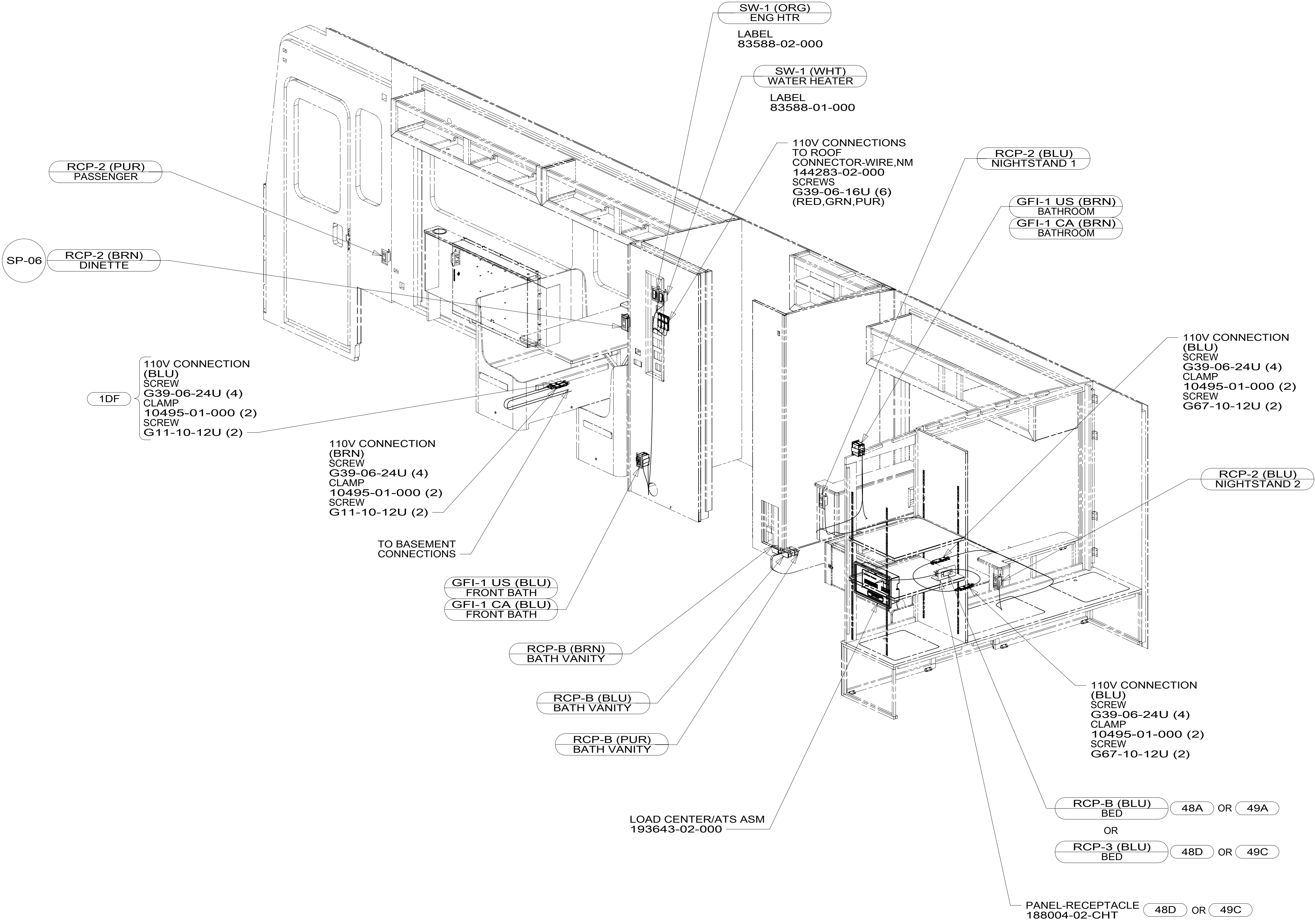
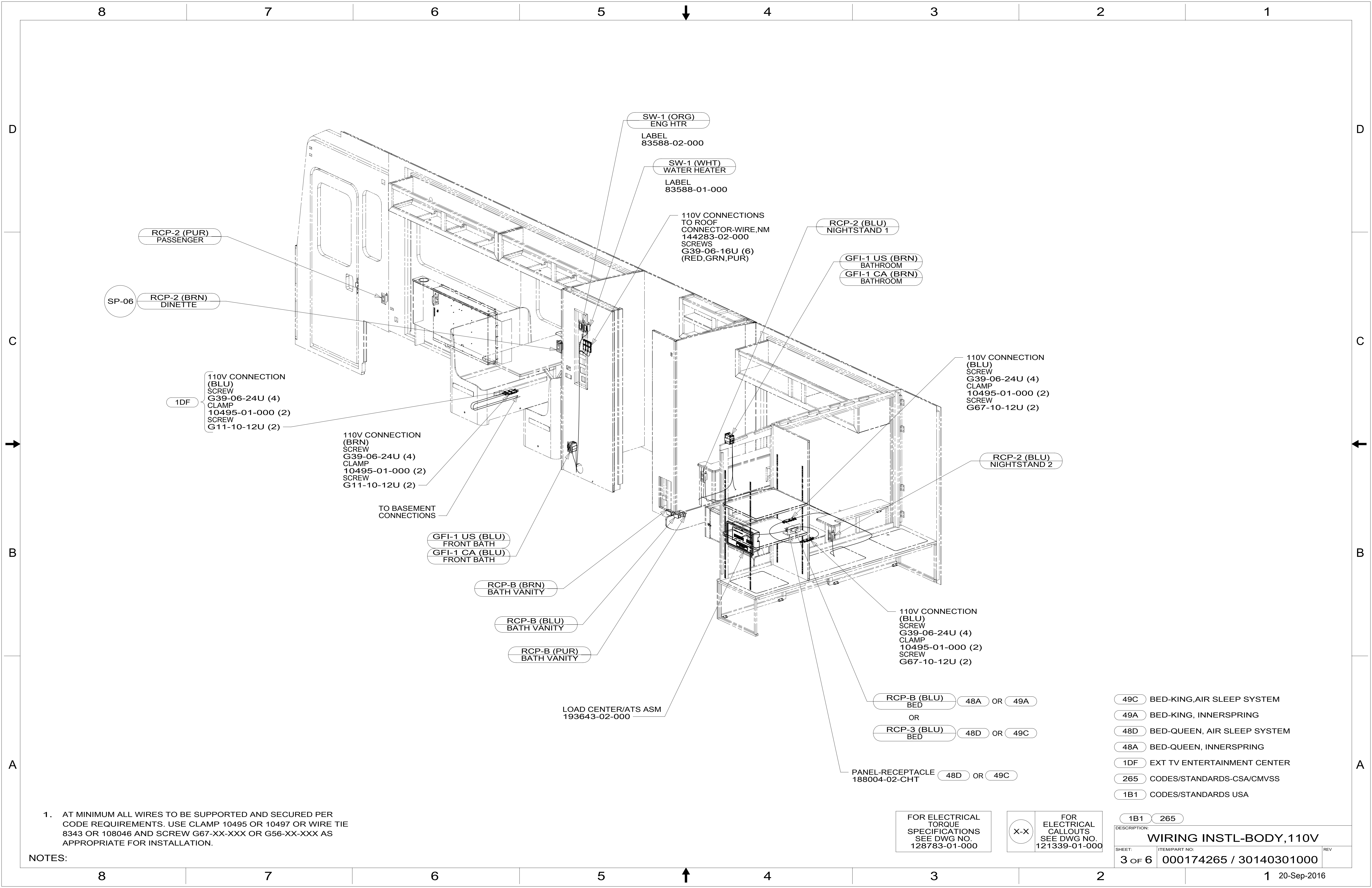
1. AT MINIMUM ALL WIRES TO BE SUPPORTED AND SECURED PER CODE REQUIREMENTS. USE CLAMP 10495 OR 10497 OR WIRE TIE 8343 OR 108046 AND SCREW G67-XX-XXX OR G56-XX-XXX AS APPROPRIATE FOR INSTALLATION.

NOTES:

FOR ELECTRICAL TORQUE SPECIFICATIONS SEE DWG NO. 128783-01-000

FOR ELECTRICAL CALLOUTS SEE DWG NO. 121339-01-000

DESCRIPTION:	
1B1 265 WIRING INSTL-BODY, 110V	
SHEET:	ITEM/PART NO. REV
2 OF 6	000174265 / 30140301000



1. AT MINIMUM ALL WIRES TO BE SUPPORTED AND SECURED PER CODE REQUIREMENTS. USE CLAMP 10495 OR 10497 OR WIRE TIE 8343 OR 108046 AND SCREW G67-XX-XXX OR G56-XX-XXX AS APPROPRIATE FOR INSTALLATION.

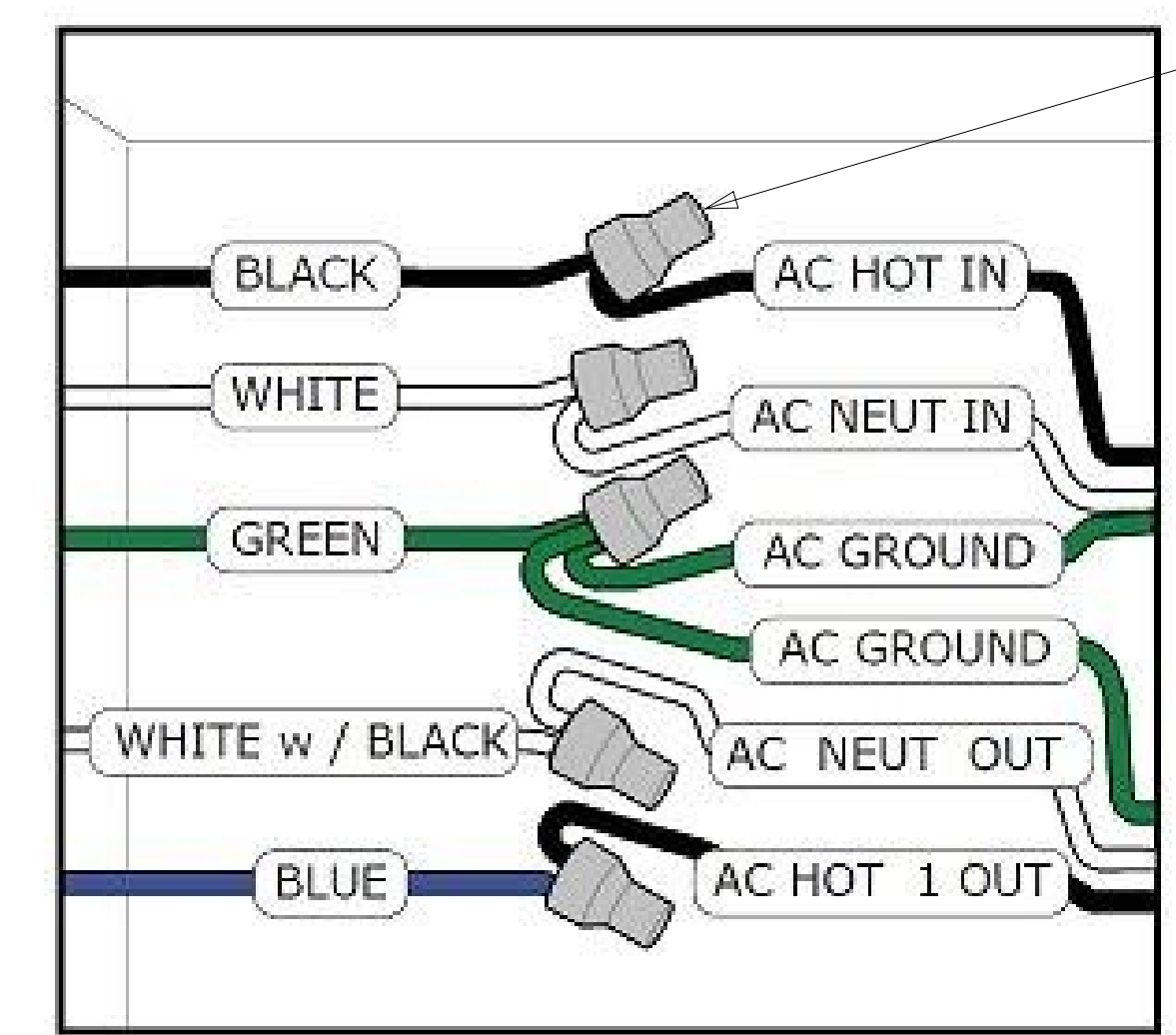
NOTES:

FOR ELECTRICAL  
TORQUE  
SPECIFICATIONS  
SEE DWG NO.  
128783-01-000

FOR ELECTRICAL  
CALLOUTS  
SEE DWG NO.  
121339-01-000

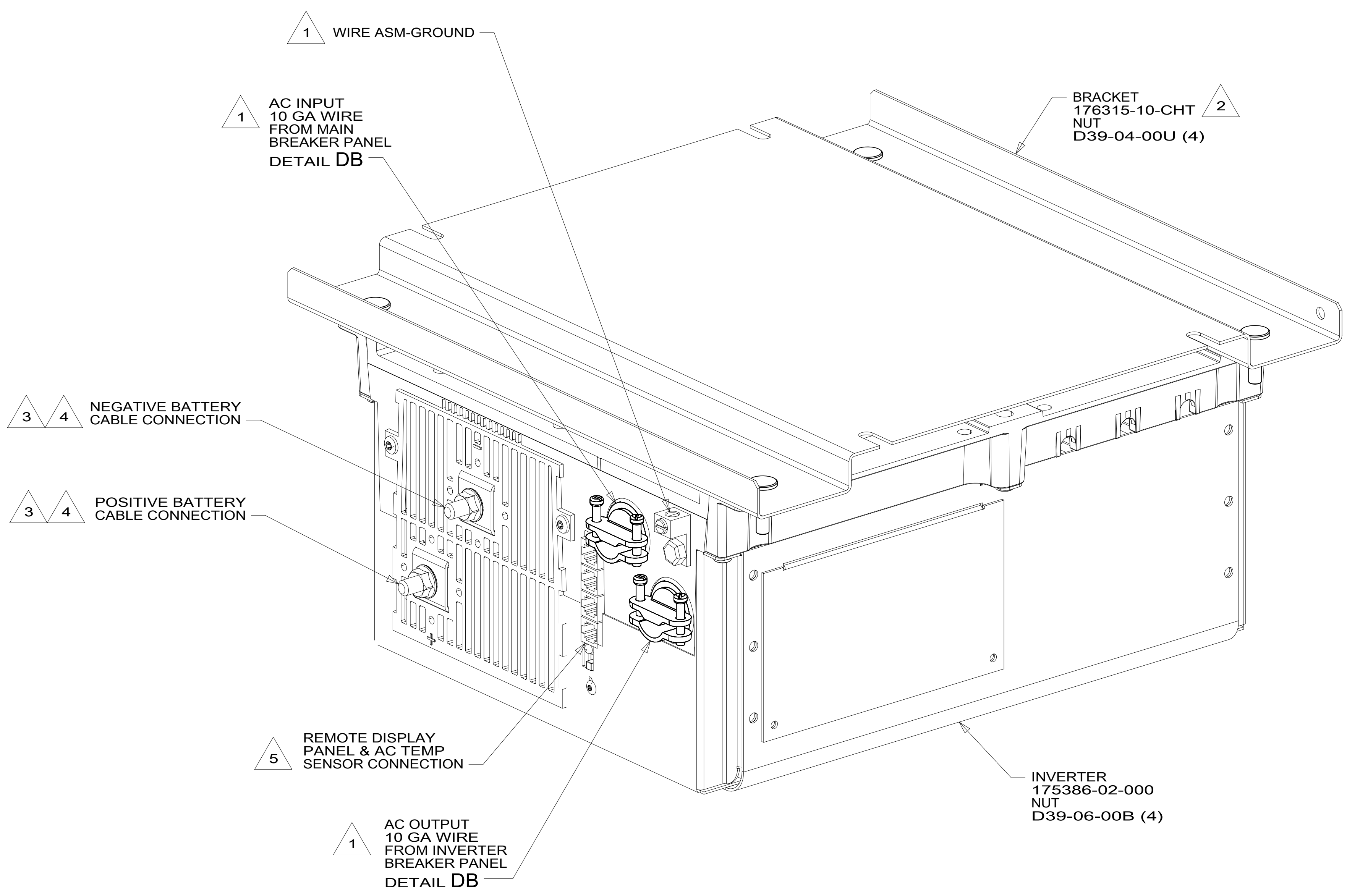
- 49C BED-KING, AIR SLEEP SYSTEM
- 49A BED-KING, INNERSPRING
- 48D BED-QUEEN, AIR SLEEP SYSTEM
- 48A BED-QUEEN, INNERSPRING
- 1DF EXT TV ENTERTAINMENT CENTER
- 265 CODES/STANDARDS-CSA/CMVSS
- 1B1 CODES/STANDARDS USA

DESCRIPTION: <b>WIRING INSTL-BODY, 110V</b>	
SHEET: 3 OF 6	ITEM/PART NO: 000174265 / 30140301000
REV	



CONNECTOR-WIRE  
008311-01-000 (5)

DETAIL DB



DETAIL DA

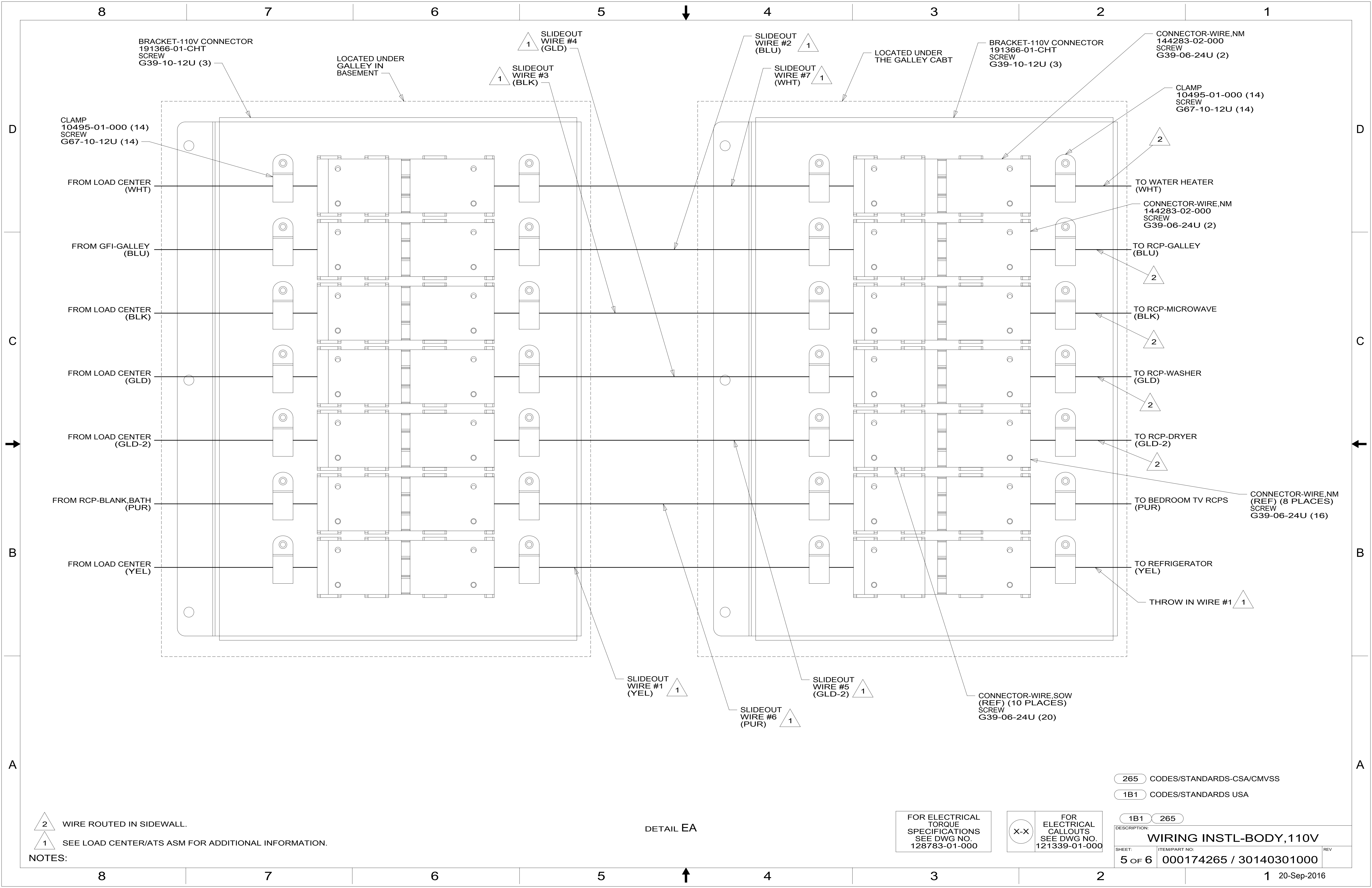
- NOTES:
- 5 CABLES PART OF WIRE ASM-COACH.
  - 4 DO NOT USE POWER/AIR TOOL TO INSTALL NUT. TORQUE TO 10-12 FT LBS. DO NOT USE A HAMMER.
  - 3 SEE WIRING INSTL-CHASSIS FOR ADDITIONAL INFORMATION.
  - 2 BRACKET IS LOCATED BY HOLES ON BRACKET.
  - 1 SEE LOAD CENTER/ATS ASM FOR ADDITIONAL INFORMATION.

265 CODES/STANDARDS-CSA/CMVSS  
1B1 CODES/STANDARDS USA

FOR ELECTRICAL TORQUE SPECIFICATIONS SEE DWG NO. 128783-01-000

FOR ELECTRICAL CALLOUTS SEE DWG NO. 121339-01-000

DESCRIPTION:	
<b>WIRING INSTL-BODY, 110V</b>	
SHEET:	ITEM/PART NO. REV
4 OF 6	000174265 / 30140301000



BRACKET-110V CONNECTOR  
191366-01-CHT  
SCREW  
G39-10-12U (3)

LOCATED UNDER  
GALLEY IN  
BASEMENT

1  
SLIDEOUT  
WIRE #4  
(GLD)

1  
SLIDEOUT  
WIRE #2  
(BLU)

LOCATED UNDER  
THE GALLEY CABT

BRACKET-110V CONNECTOR  
191366-01-CHT  
SCREW  
G39-10-12U (3)

CONNECTOR-WIRE,NM  
144283-02-000  
SCREW  
G39-06-24U (2)

CLAMP  
10495-01-000 (14)  
SCREW  
G67-10-12U (14)

CLAMP  
10495-01-000 (14)  
SCREW  
G67-10-12U (14)

FROM LOAD CENTER  
(WHT)

2

TO WATER HEATER  
(WHT)

FROM GFI-GALLEY  
(BLU)

CONNECTOR-WIRE,NM  
144283-02-000  
SCREW  
G39-06-24U (2)

TO RCP-GALLEY  
(BLU)

FROM LOAD CENTER  
(BLK)

2

TO RCP-MICROWAVE  
(BLK)

FROM LOAD CENTER  
(GLD)

2

TO RCP-WASHER  
(GLD)

FROM LOAD CENTER  
(GLD-2)

2

TO RCP-DRYER  
(GLD-2)

FROM RCP-BLANK BATH  
(PUR)

2

TO BEDROOM TV RCPS  
(PUR)

CONNECTOR-WIRE,NM  
(REF) (8 PLACES)  
SCREW  
G39-06-24U (16)

FROM LOAD CENTER  
(YEL)

TO REFRIGERATOR  
(YEL)

THROW IN WIRE #1 1

SLIDEOUT  
WIRE #1  
(YEL) 1

SLIDEOUT  
WIRE #5  
(GLD-2) 1

SLIDEOUT  
WIRE #6  
(PUR) 1

CONNECTOR-WIRE,SOW  
(REF) (10 PLACES)  
SCREW  
G39-06-24U (20)

265 CODES/STANDARDS-CSA/CMVSS

1B1 CODES/STANDARDS USA

2 WIRE ROUTED IN SIDEWALL.  
1 SEE LOAD CENTER/ATS ASM FOR ADDITIONAL INFORMATION.

DETAIL EA

FOR ELECTRICAL  
TORQUE  
SPECIFICATIONS  
SEE DWG NO.  
128783-01-000

X-X FOR  
ELECTRICAL  
CALLOUTS  
SEE DWG NO.  
121339-01-000

DESCRIPTION:	1B1 265	
<b>WIRING INSTL-BODY, 110V</b>		
SHEET:	ITEM/PART NO:	REV
5 OF 6	000174265 / 30140301000	