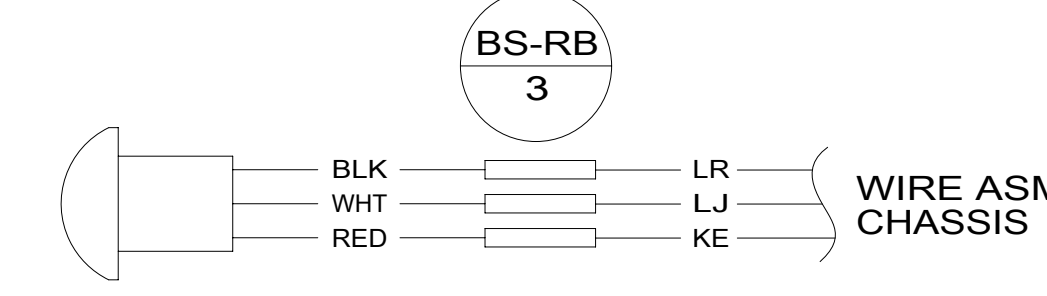


- 9 REMOVE PLASTIC TRAY AND DISCARD.
- 8 10-PIN HOUSING CONNECTS TO GENERATOR.
- 7 CONNECT THE TWO 15 PIN HOUSINGS TOGETHER WITHOUT (57P)
- 6 ROUTE GENERATOR CONTROL CABEL ALONG WIRE ASM-CHASSIS THROUGH FLOOR IN THIS AREA.
- 5 WITH FEATURE (33F) CABLE SUPPLIED WITH DIESEL GENERATOR.
- 4 SEE BATTERY INSTL FOR ADDITIONAL INFORMATION.
- 3 CUT WIRE TIE AROUND SPRINTER SEAL, ROUTE THE CHASSIS WIRING THROUGH HOLE AND WIRE TIE SEAL WITH WIRE TIE 8343-04-000.
- 2 12-PIN HOUSING TO BE ROUTED ABOVE FLOOR TO CONTROL PANEL.

- 12 DRILL 12.3 MM HOLE IN DASH PANEL.
- 11 REMOVE REAR VIEW MIRROR AND MOUNT CAMERA TO CENTER OF WINDSHIELD AND 25 MM BELOW REAR VIEW MIRROR BUTTON. ROUTE CABLE UP ABOVE HEADLINER THEN LEFT DOWN LEFT A-POST COVER TO CENTER DASH TO CONNECT TO WIRE ASM-CHASSIS.
- 10 NOTCH A-POST COVER WHERE IT MEETS THE DASH TO ALLOW DISPLAY CABLE THROUGH. MOUNT DISPLAY TO A-POST COVER AND ADJUST FOR DRIVER'S VIEWING. ROUTE DISPLAY CABLE TO CENTER DASH AND CONNECT TO CAMERA HARNESS.



FOR ELECTRICAL TORQUE SPECIFICATIONS SEE DWG NO. 128783-01-000

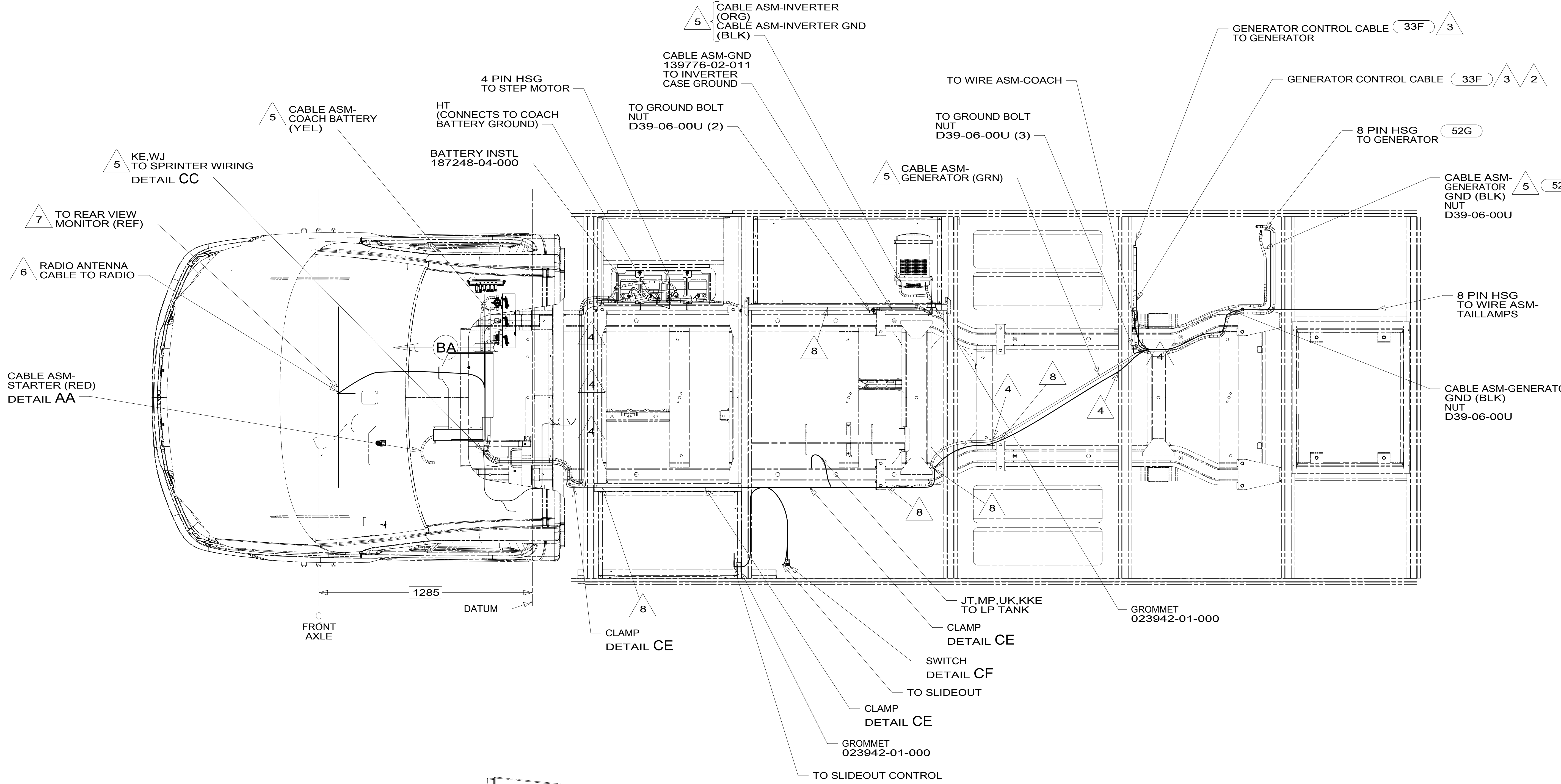
FOR ELECTRICAL CALLOUTS SEE DWG NO. 121339-01-000

- (36C) COLLISION AVOIDANCE SYSTEM
- (57P) RADIO SPEAKERS-PREMIUM SOUND
- (52G) GEN-3.6KW ONAN LP MICROQUIET
- (33F) GEN-3.5 KW ONAN DIESEL
- (265) CODES/STANDARDS-CSA/CMVSS
- (1B1) CODES/STANDARDS USA

WINNEBAGO
COPYRIGHT 2016 WINNEBAGO INDUSTRIES, INC.

DSNR:	ALL DIMENSIONS ARE IN MILLIMETERS	
DFFR:		
UNSPECIFIED TOLERANCES:	MATERIAL:	
WHOLE DIM (X) :	3	
ONE-PLACE (X.X) :	1.5	
TWO-PLACE (X.XX) :	0.50	
ANGLE :	1°	
REFER TO ES0018 FOR FASTENER TIGHTENING GUIDELINES	WEIGHT: (LBS)	FIRST USED: 16 524V
DESCRIPTION: WIRING INSTL-CHASSIS		
SHEET: 1 OF 3	ITEM/PART NO: 000174050 / 30089601000	REF:

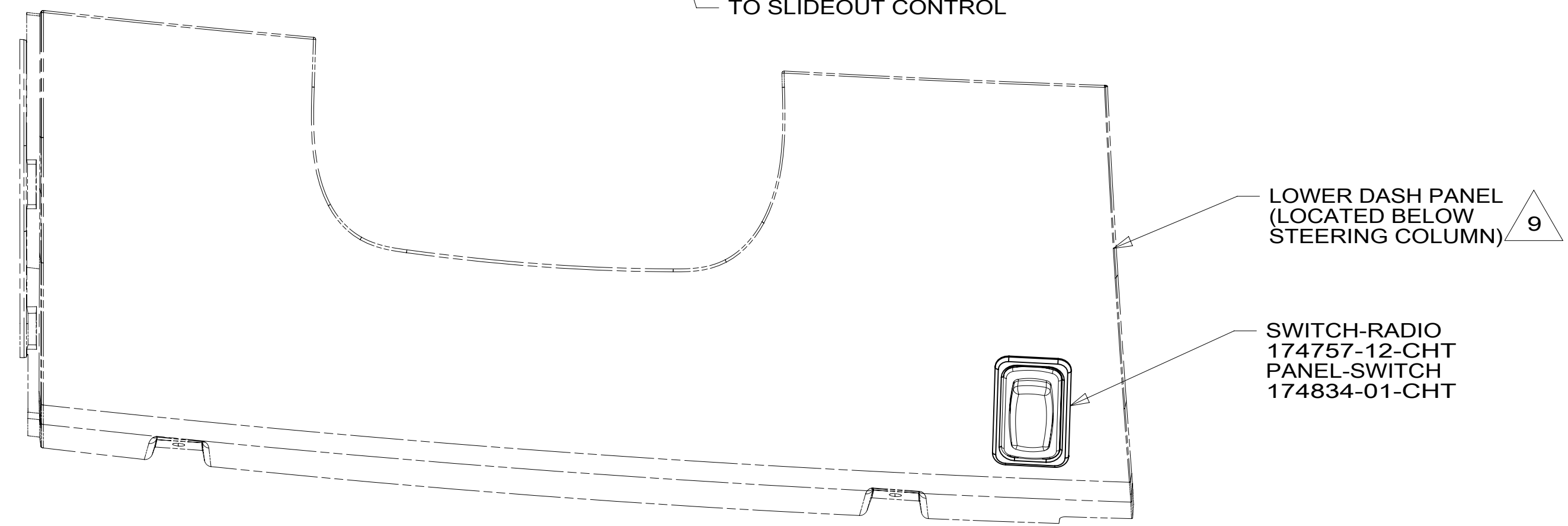
8 7 6 5 4 3 2 1



- 9 FOR CUTOUT DIMENSIONS SEE DETAIL CA AND DETAIL CG.
- 8 TIE-WIRE MOUNT 116673-02-000. USE HOLES IN BODY MOUNTS.
- 7 SEE RADIO/MONITOR INSTL FOR ADDITIONAL INFORMATION.
- 6 ROUTE WIRES THROUGH CAB FLOOR UNDER DRIVERS SEAT PEDESTAL.
- 5 SEE BATTERY INSTL FOR ADDITIONAL INFORMATION.
- 4 CLAMP 83610-02-000, SCREW G39-08-12B. DO NOT DRILL OR SCREW INTO SPRINTER FRAME. USE ALUMINUM RISERS.
- 3 WITH FEATURE 33FCABLE SUPPLIED WITH DIESEL GENERATOR.
- 2 ROUTE GENERATOR CONTROL CABLE ALONG WIRE ASM-CHASSIS THROUGH FLOOR IN THIS AREA.

1. SECURE CONDUIT 41953, TAB AS REQUIRED, OVER ALL WIRES IN CONTACT WITH SHARP EDGES.

NOTES:



VIEW BA

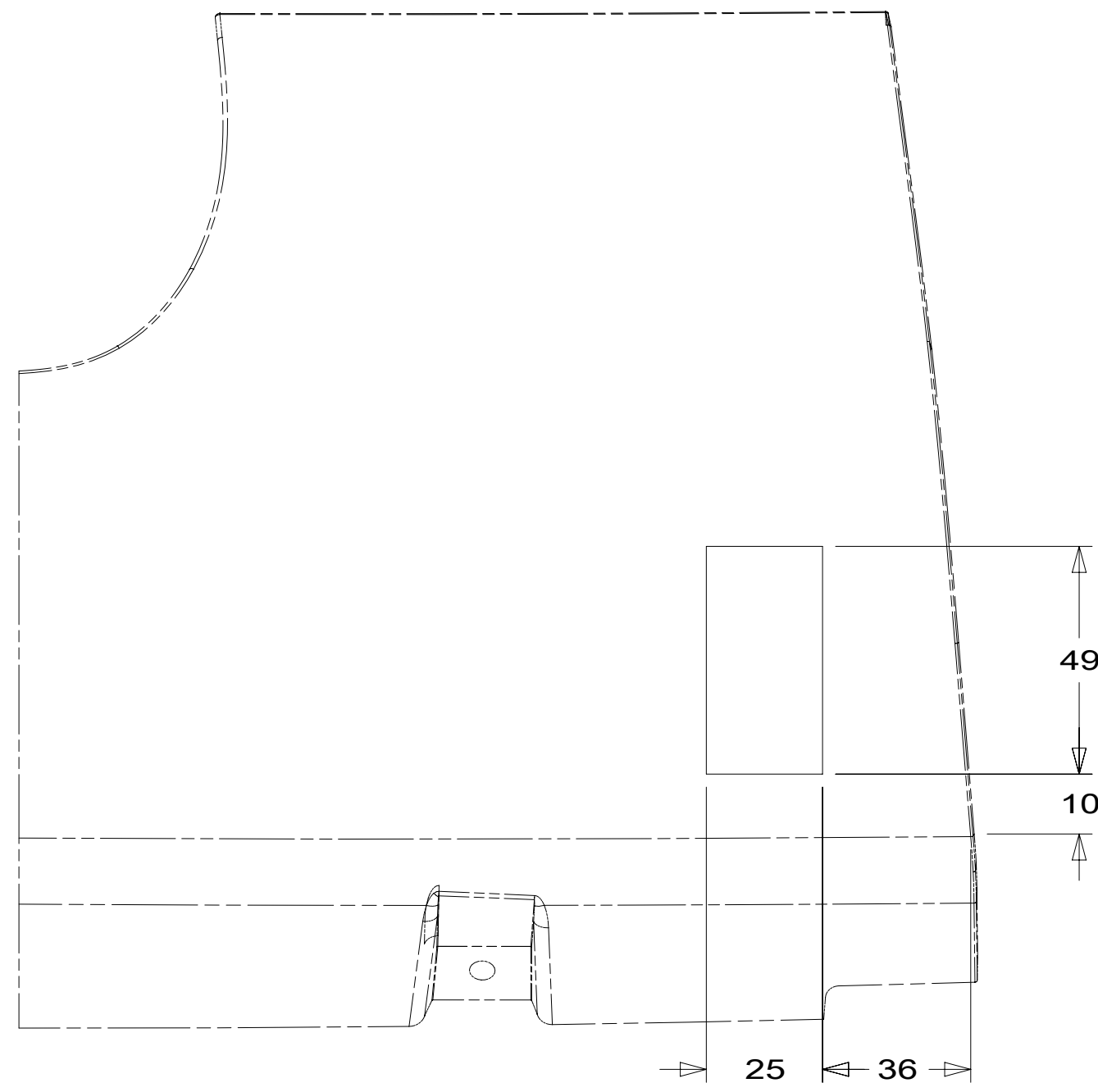
FOR ELECTRICAL TORQUE SPECIFICATIONS SEE DWG NO. 128783-01-000

FOR ELECTRICAL CALLOUTS SEE DWG NO. 121339-01-000

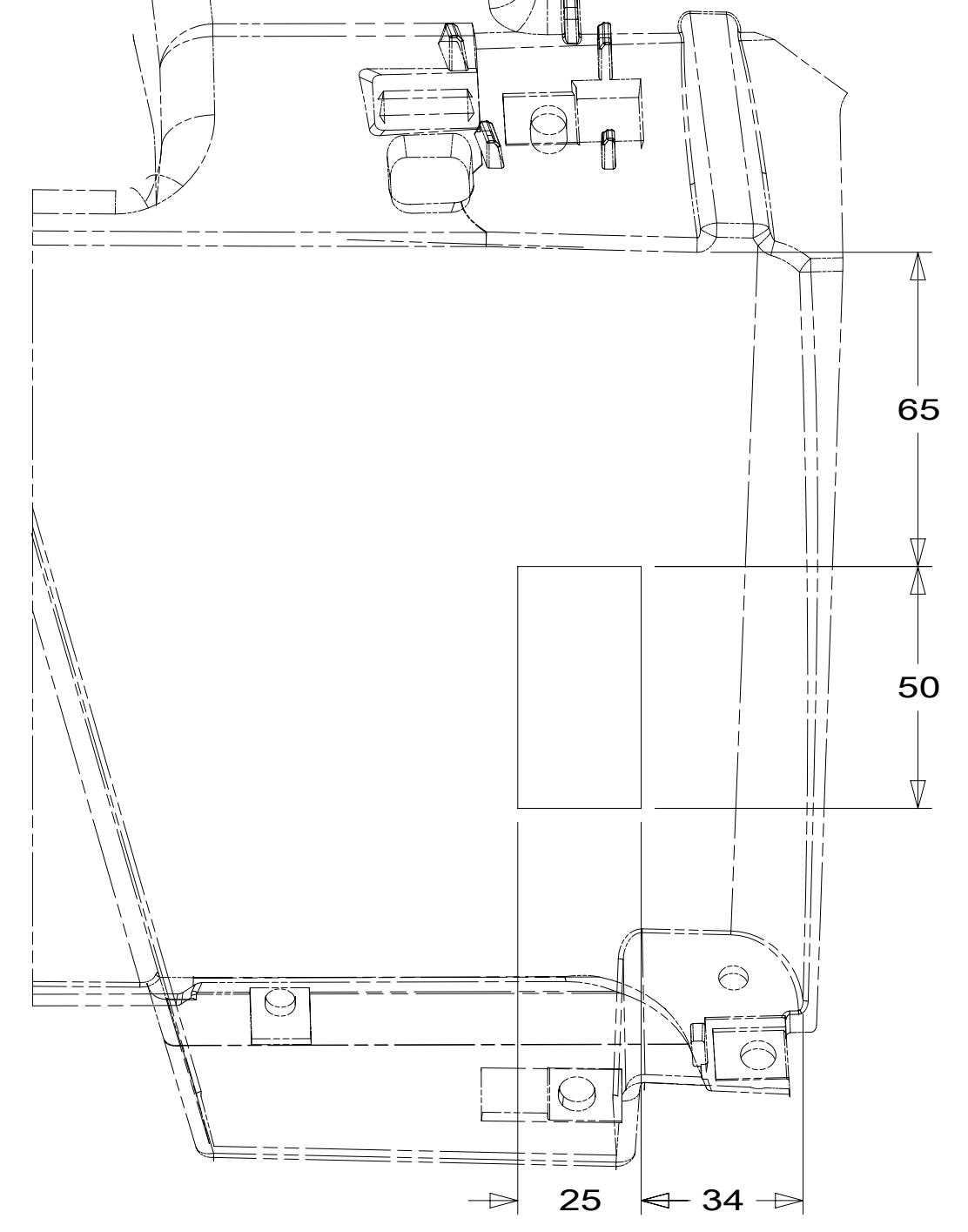
- 52G GEN-3.6KW ONAN LP MICROQUIET
- 33F GEN-3.5 KW ONAN DIESEL
- 265 CODES/STANDARDS-CSA/CMVSS
- 1B1 CODES/STANDARDS USA

DESCRIPTION:		1B1 265	
WIRING INSTL-CHASSIS			
SHEET:	ITEM/PART NO.:	REV	
2 OF 3	000174050 / 30089601000		

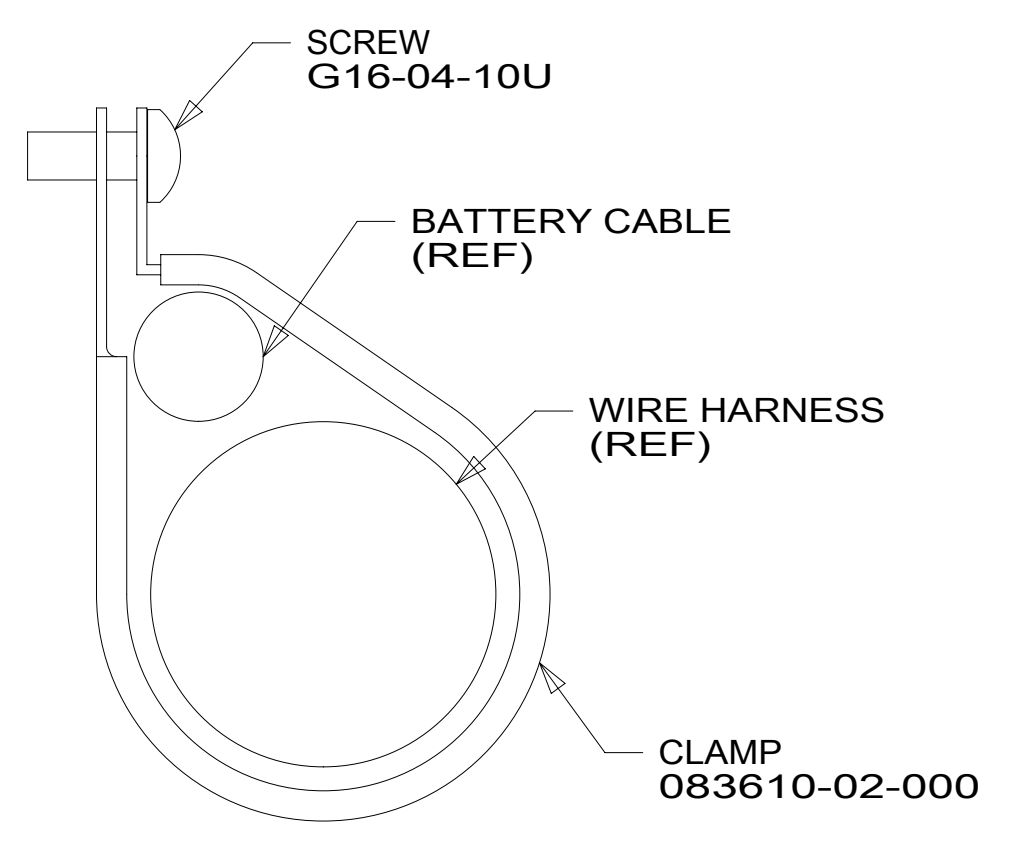
8 7 6 5 4 3 2 1 20-Sep-2016



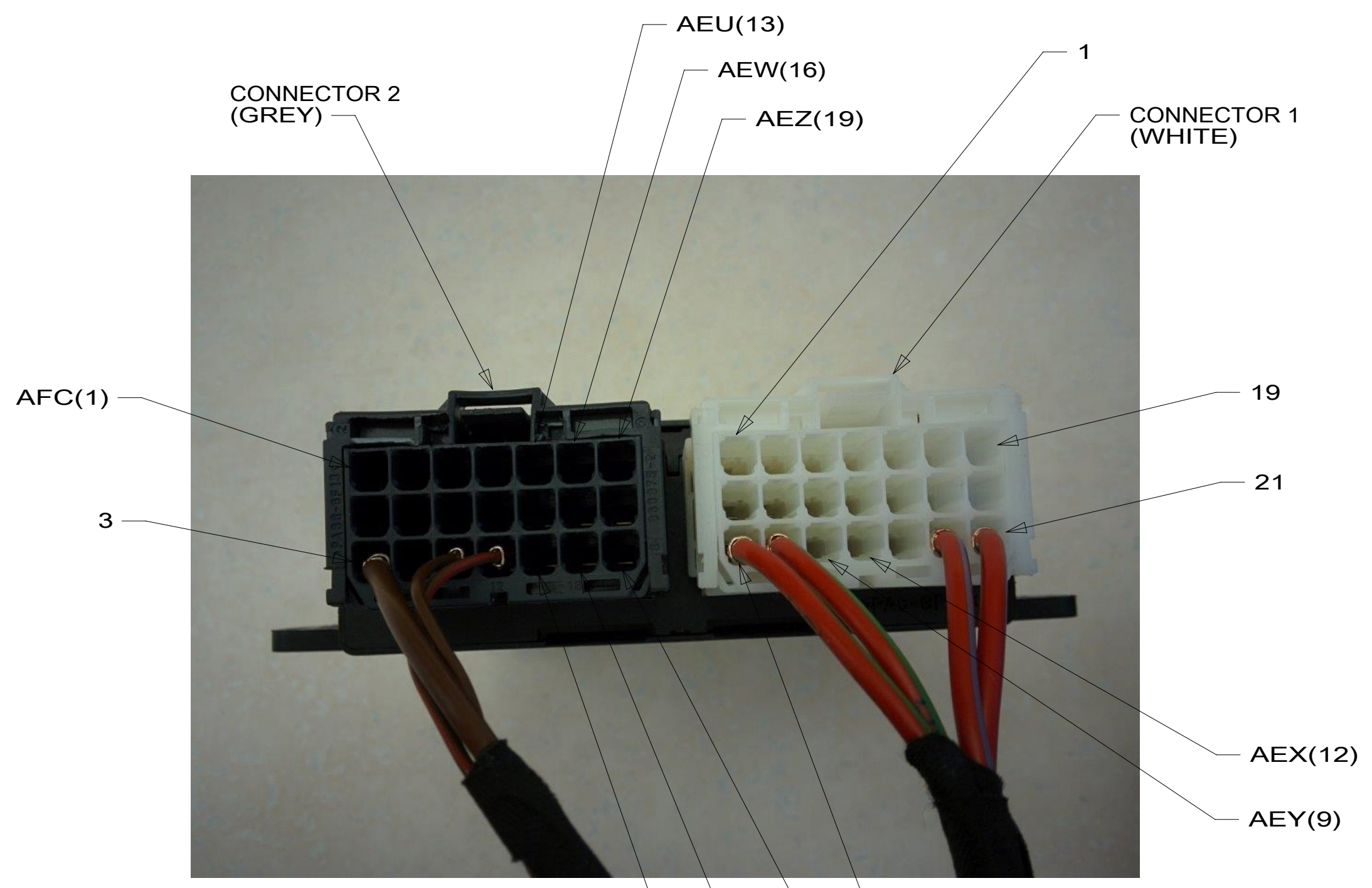
DETAIL CA 5



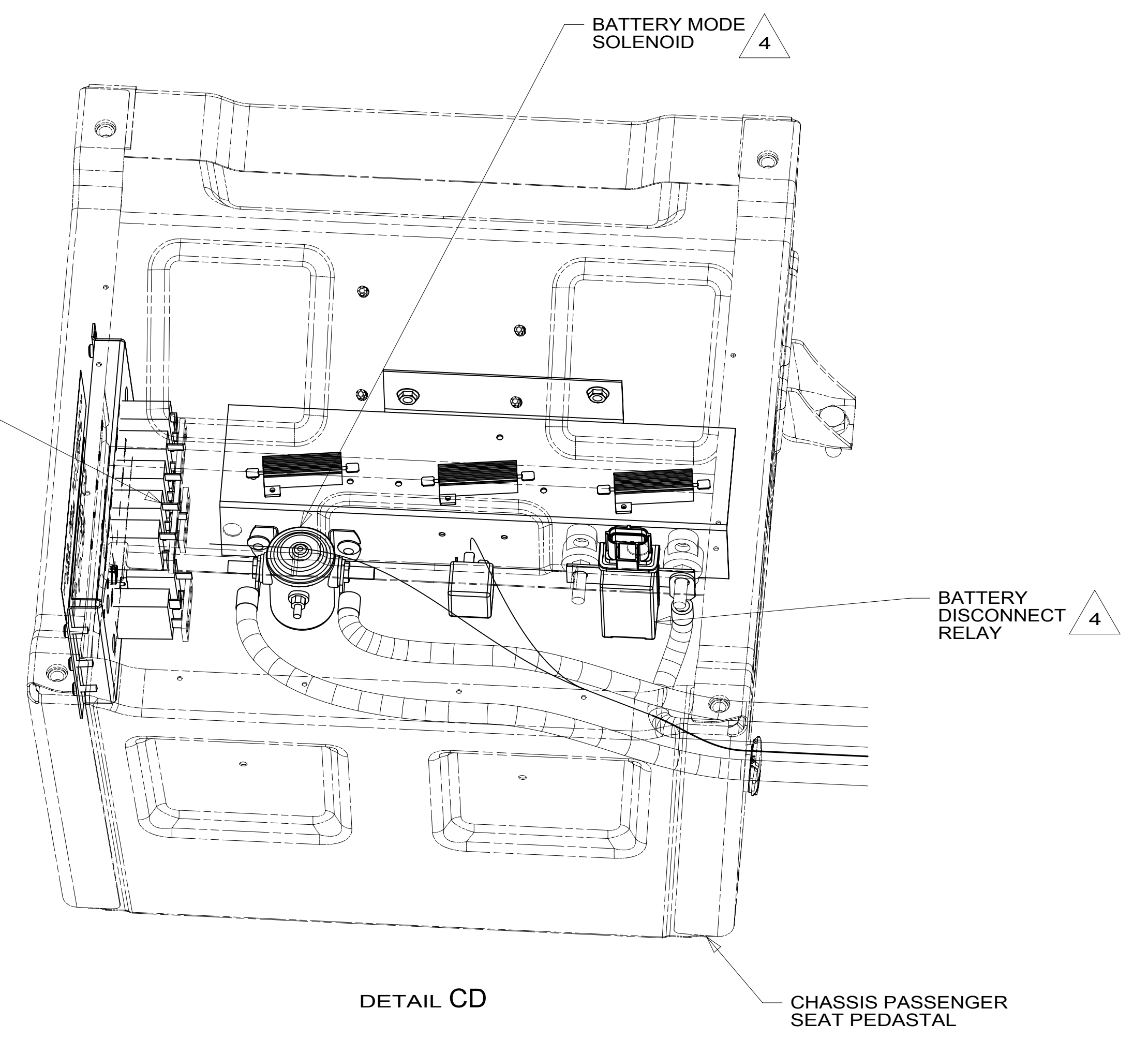
DETAIL CG 6



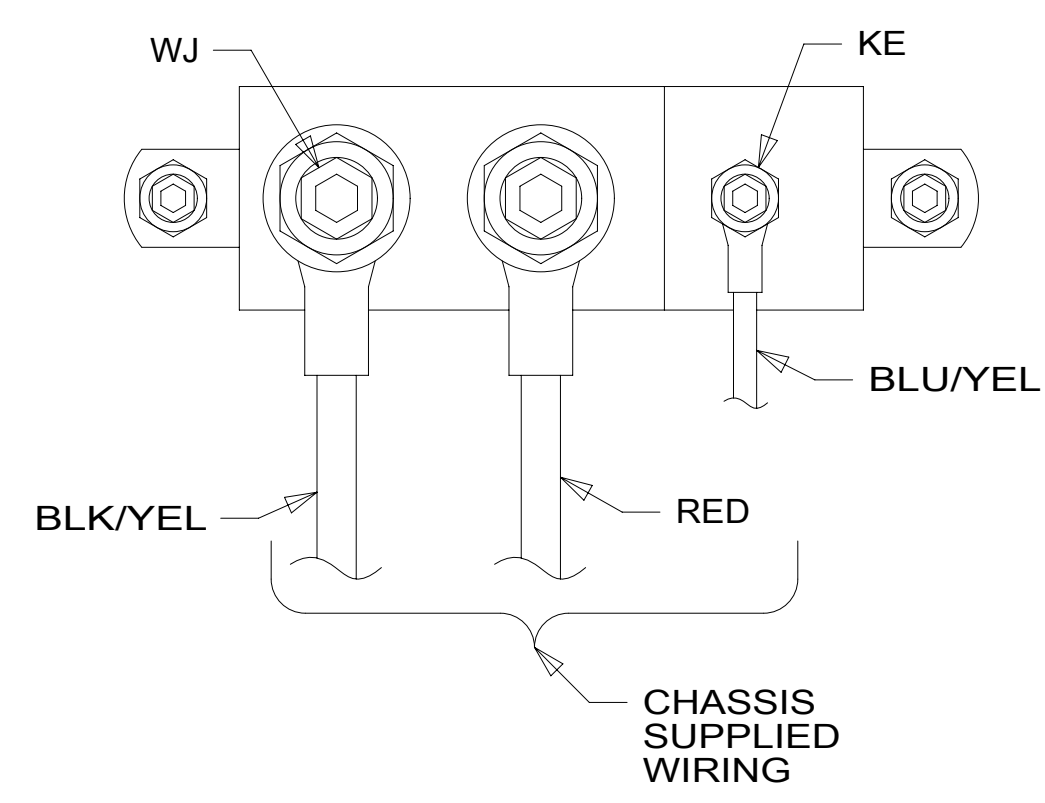
DETAIL CE (3 PLACES)



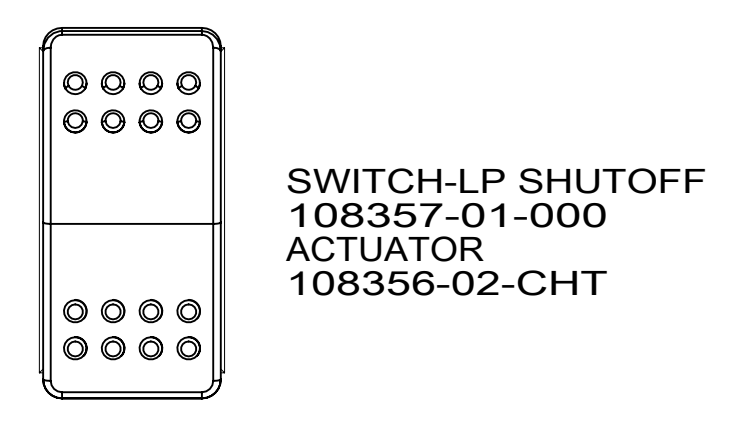
DETAIL CB 2



DETAIL CD



DETAIL CC 3



DETAIL CF

- 6 DASH STRUCTURE LOCATED BEHIND LOWER DASH PANEL.
- 5 LOWER DASH PANEL.
- 4 SEE CHASSIS ELECTRICAL BOX ASM FOR ADDITIONAL INFORMATION.
- 3 CONNECTION POINT IS LOCATED UNDER DRIVERS SEAT.
- 2 PSM IS LOCATED UNDER DRIVER'S SEAT.

NOTES:
1. SECURE CONDUIT 41953, TAB AS REQUIRED, OVER ALL WIRES IN CONTACT WITH SHARP EDGES.

FOR ELECTRICAL TORQUE SPECIFICATIONS SEE DWG NO. 128783-01-000

FOR ELECTRICAL CALLOUTS SEE DWG NO. 121339-01-000

265 CODES/STANDARDS-CSA/CMVSS
1B1 CODES/STANDARDS USA

DESCRIPTION: WIRING INSTL-CHASSIS	
SHEET: 3 OF 3	ITEM/PART NO: 000174050 / 30089601000
REV 1 20-Sep-2016	