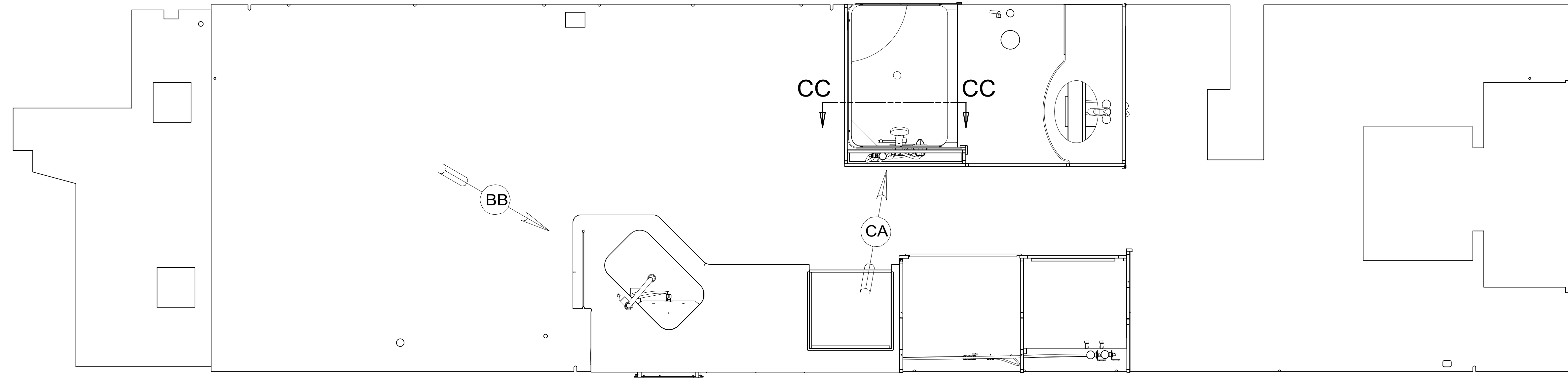


REV	ZONE	REVISION RECORD	DATE	DFTR-ORIG
A	---	INITIAL RELEASE	09/30/15	3650



12 FOR INSTALLATION USE SILICON-ADHESIVE 131264-05-CHT. APPLY ON TOP OF PLATE, PLACE COVER ON, AND PUT ADHESIVE AROUND COVER.

11 VALVE MUST REMAIN OPEN AFTER WATER TEST.

10 INSTALL FAUCET W/OUT BASEPLATE.

9 ELBOW TO BE TURN 45° BELOW HORIZONTAL LINE.

8. ALL CRIMP FITTINGS TO 1/2" PEX TUBING REQUIRE 1/2" CLAMP 140171-03-000.

7. ALL CRIMP FITTINGS TO 5/8" PEX TUBING REQUIRE 5/8" CLAMP 140171-04-000.

6 LABEL HOT AND COLD SUPPLY TUBES AND TAPE FITTING TO TUBE BEFORE CABINET SET TO PREVENT MOVEMENT.

5 ADD PIPE WRAP (LADDER SCRAP 110157-02-000) INSULATION.

4 ADD TEFLON TAPE 010405-02-000.

3. ALL TUBING TO BE SECURED AT 1200 INTERVALS MAXIMUM WITH CLAMP 010495-01-000 AND SCREW 000G67-10-12U OR EQUIVALENT.

2. TUBING TO BE INSTALLED WITH SUFFICIENT SLOPE TO PROVIDE DRAINAGE TO NEAREST VALVE.

1. PLASTIC FITTINGS TO BE SEALED WITH SEALANT 084456-01-000.

NOTES:

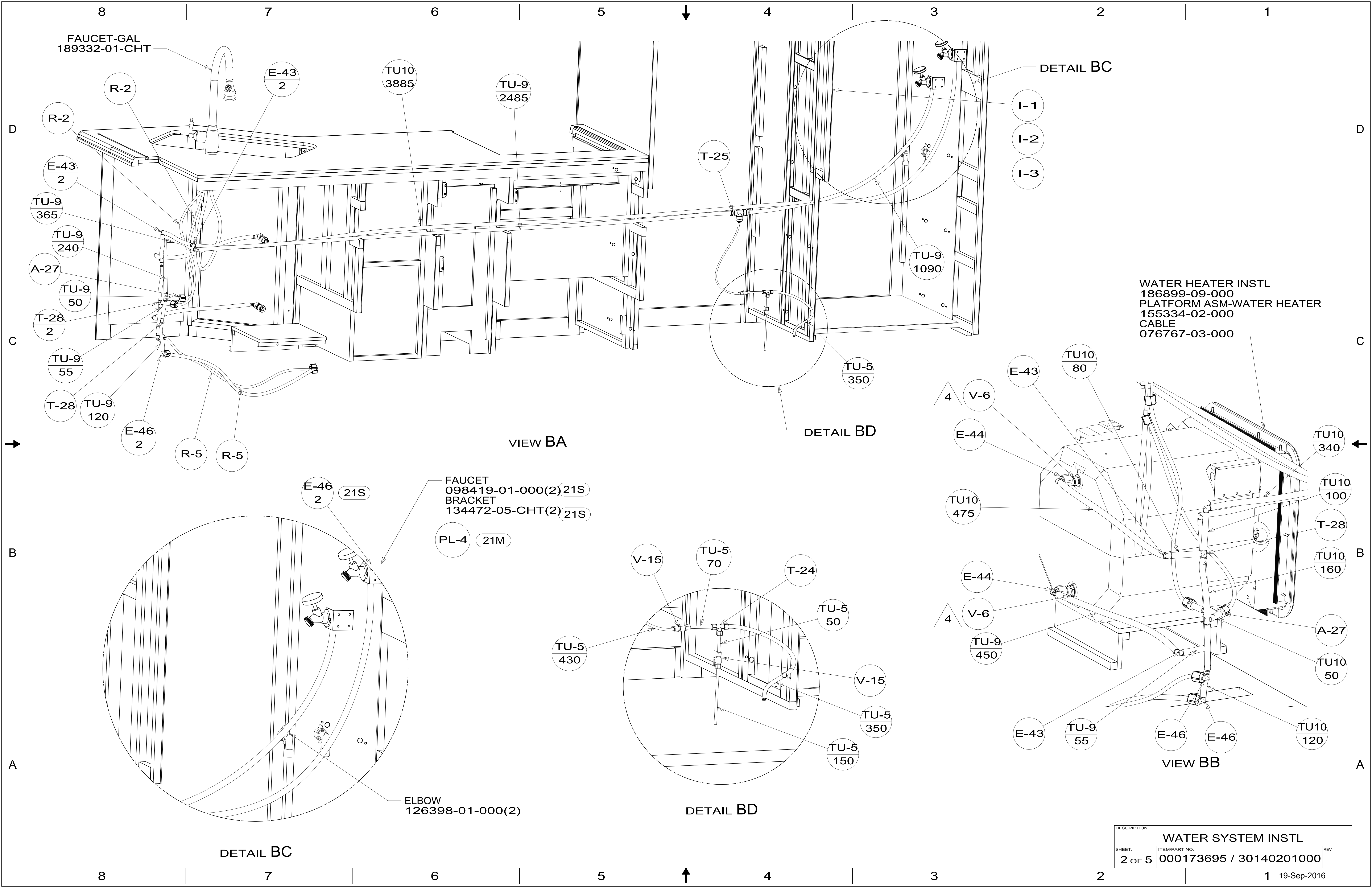


- 21S WASHER & DRYER-PAIR
- 21M WASHER/DRYER PREP

X-X
FOR
WATER
CALLOUTS
SEE DWG NO.
116230-01-000

COPYRIGHT 2016 WINNEBAGO INDUSTRIES, INC.

DSNR:		ALL DIMENSIONS ARE IN MILLIMETERS	
DFTR:			
UNSPECIFIED TOLERANCES:		MATERIAL:	
WHOLE DIM (X)	3		
ONE-PLACE (X.X)	1.5		
TWO-PLACE (X.XX)	0.50		
ANGLE	1°		
REFER TO ES0018 FOR FASTENER TIGHTENING GUIDELINES		WEIGHT: (LBS)	FIRST USED: (REF)
DESCRIPTION: WATER SYSTEM INSTL			
SHEET: 1 OF 5	ITEM/PART NO: 000173695 / 30140201000	REV:	



VIEW BA

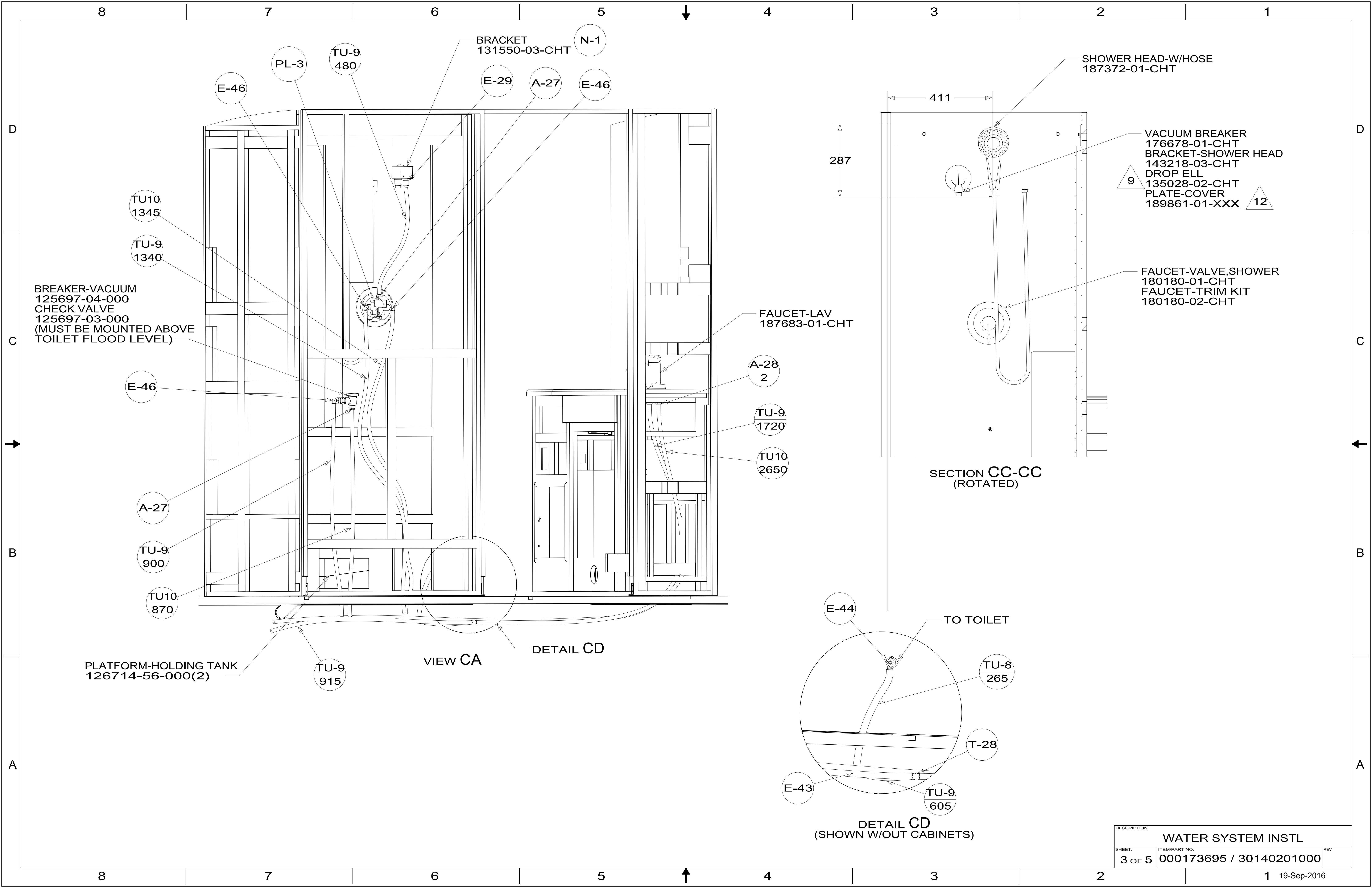
DETAIL BD

VIEW BB

DETAIL BC

DETAIL BD

DESCRIPTION:		
WATER SYSTEM INSTL		
SHEET:	ITEM/PART NO.:	REV
2 OF 5	000173695 / 30140201000	



BREAKER-VACUUM
125697-04-000
CHECK VALVE
125697-03-000
(MUST BE MOUNTED ABOVE
TOILET FLOOD LEVEL)

PLATFORM-HOLDING TANK
126714-56-000(2)

BRACKET
131550-03-CHT

SHOWER HEAD-W/HOSE
187372-01-CHT

VACUUM BREAKER
176678-01-CHT
BRACKET-SHOWER HEAD
143218-03-CHT
DROP ELL
135028-02-CHT
PLATE-COVER
189861-01-XXX

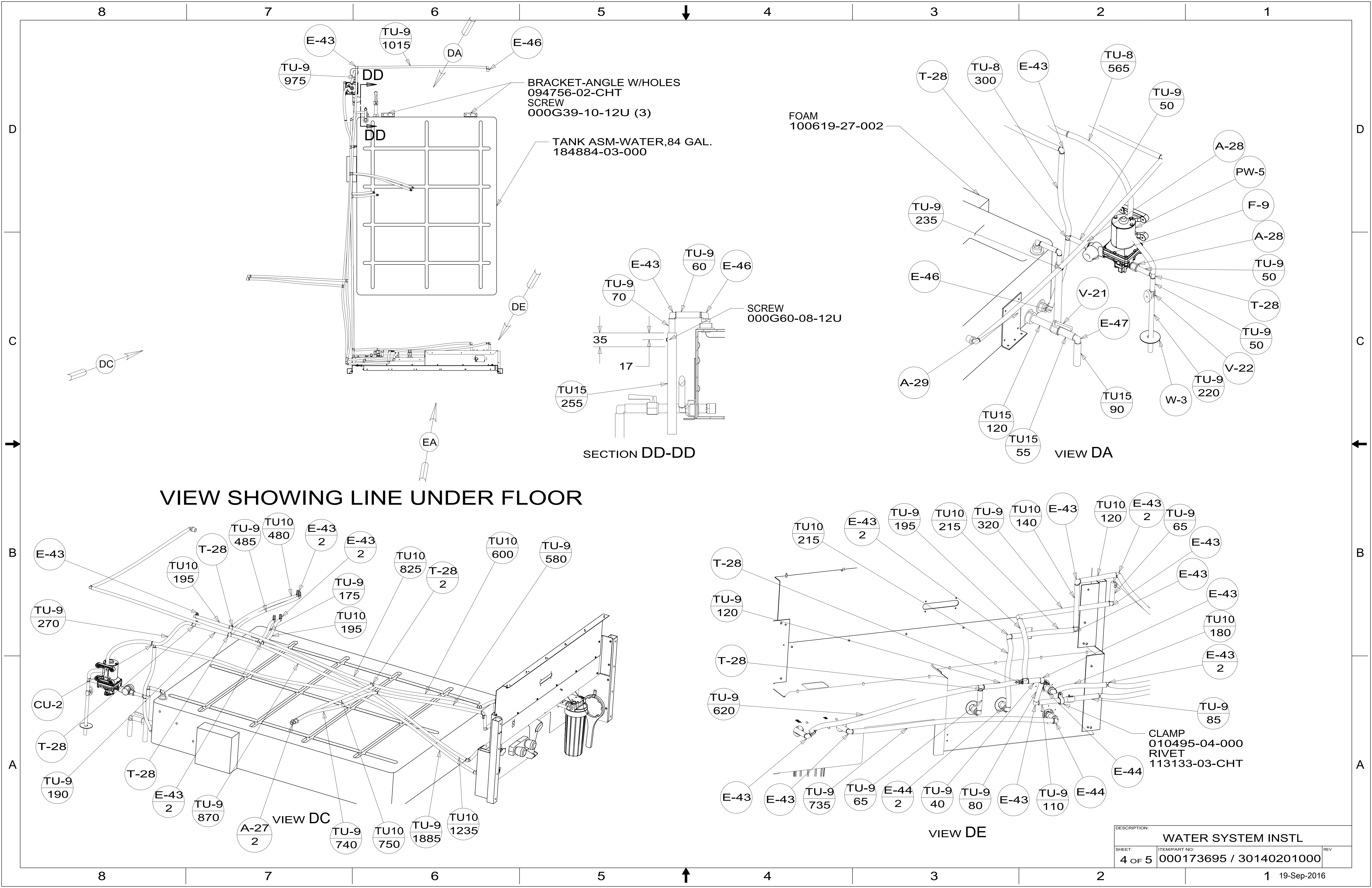
FAUCET-VALVE, SHOWER
180180-01-CHT
FAUCET-TRIM KIT
180180-02-CHT

FAUCET-LAV
187683-01-CHT

SECTION CC-CC
(ROTATED)

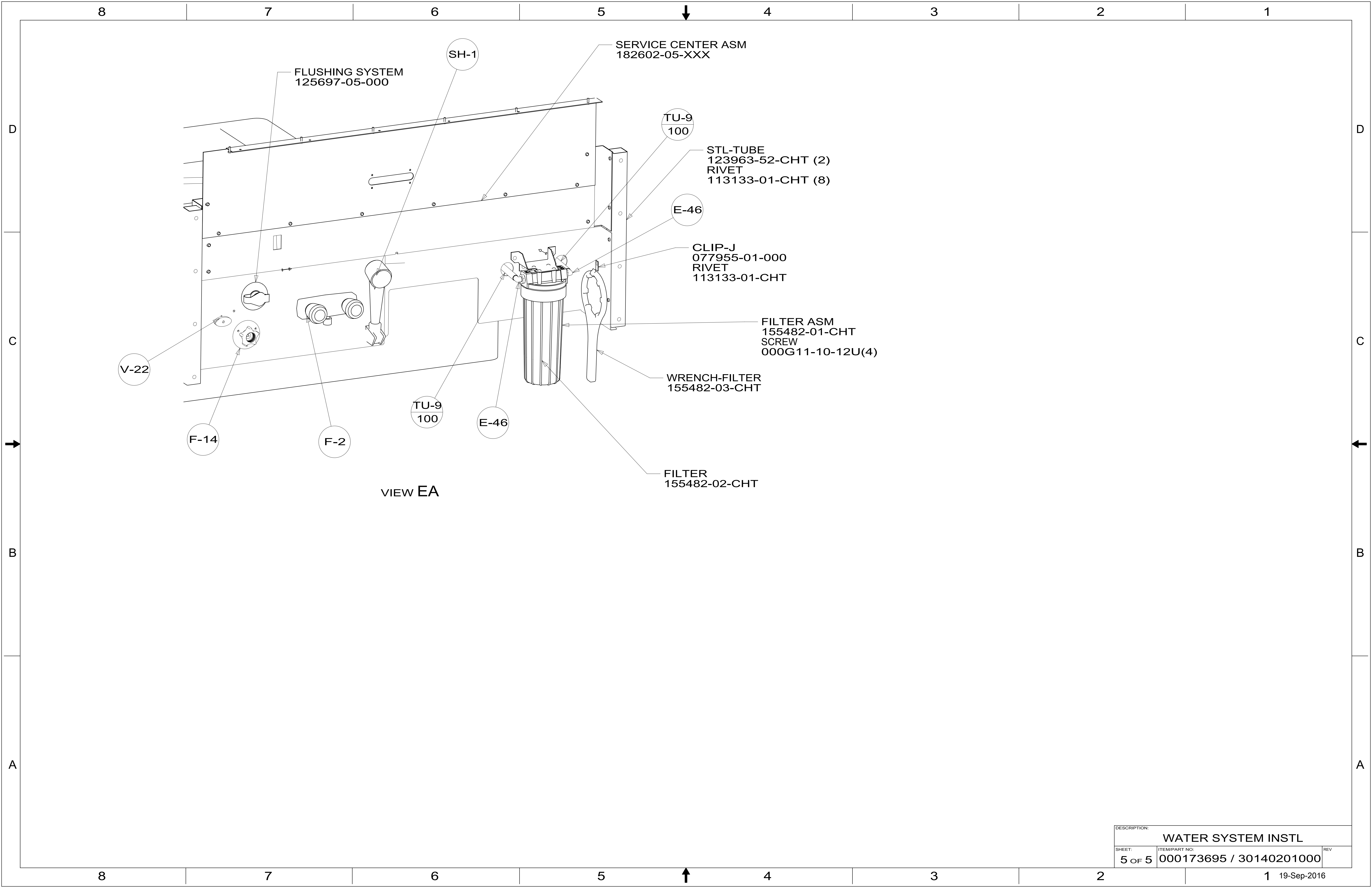
DETAIL CD
(SHOWN W/OUT CABINETS)

DESCRIPTION: WATER SYSTEM INSTL		
SHEET: 3 OF 5	ITEM/PART NO: 000173695 / 30140201000	REV



VIEW SHOWING LINE UNDER FLOOR

DESCRIPTION:		
WATER SYSTEM INSTL		
SHEET:	ITEM/PART NO:	REV
4 OF 5	000173695 / 30140201000	



DESCRIPTION:		
WATER SYSTEM INSTL		
SHEET:	ITEM/PART NO:	REV
5 OF 5	000173695 / 30140201000	