

LAMP ASM-SIDEMARKER,RED
171195-01-000
SCREW
G11-08-12U (2)

LAMP-MARKER,W AMBER LENS,BLK
193802-03-000
GASKET-LIGHT
193802-05-000
SCREW
G11-08-12U (EXT) (2)

LAMP ASM-SIDEMARKER,AMBER
171195-02-000
BEZEL-LIGHT,SIDEMARKER
181242-01-CHT
SCREW
G11-08-12U (EXT) (2)

LAMP ASM-SIDEMARKER,AMBER
171195-02-000
BEZEL-LIGHT,SIDEMARKER
181242-01-CHT
SCREW
G11-08-12U (EXT) (2)

LAMP-MARKER,W AMBER LENS,BLK
193802-03-000
GASKET-LIGHT
193802-05-000
SCREW
G11-08-12U (EXT) (2)

LAMP-MARKER,RED
171195-01-000
SCREW
G11-08-12U (2)

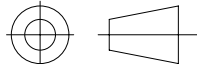
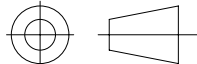
FOR ELECTRICAL
TORQUE
SPECIFICATIONS
SEE DWG NO.
128783-01-000

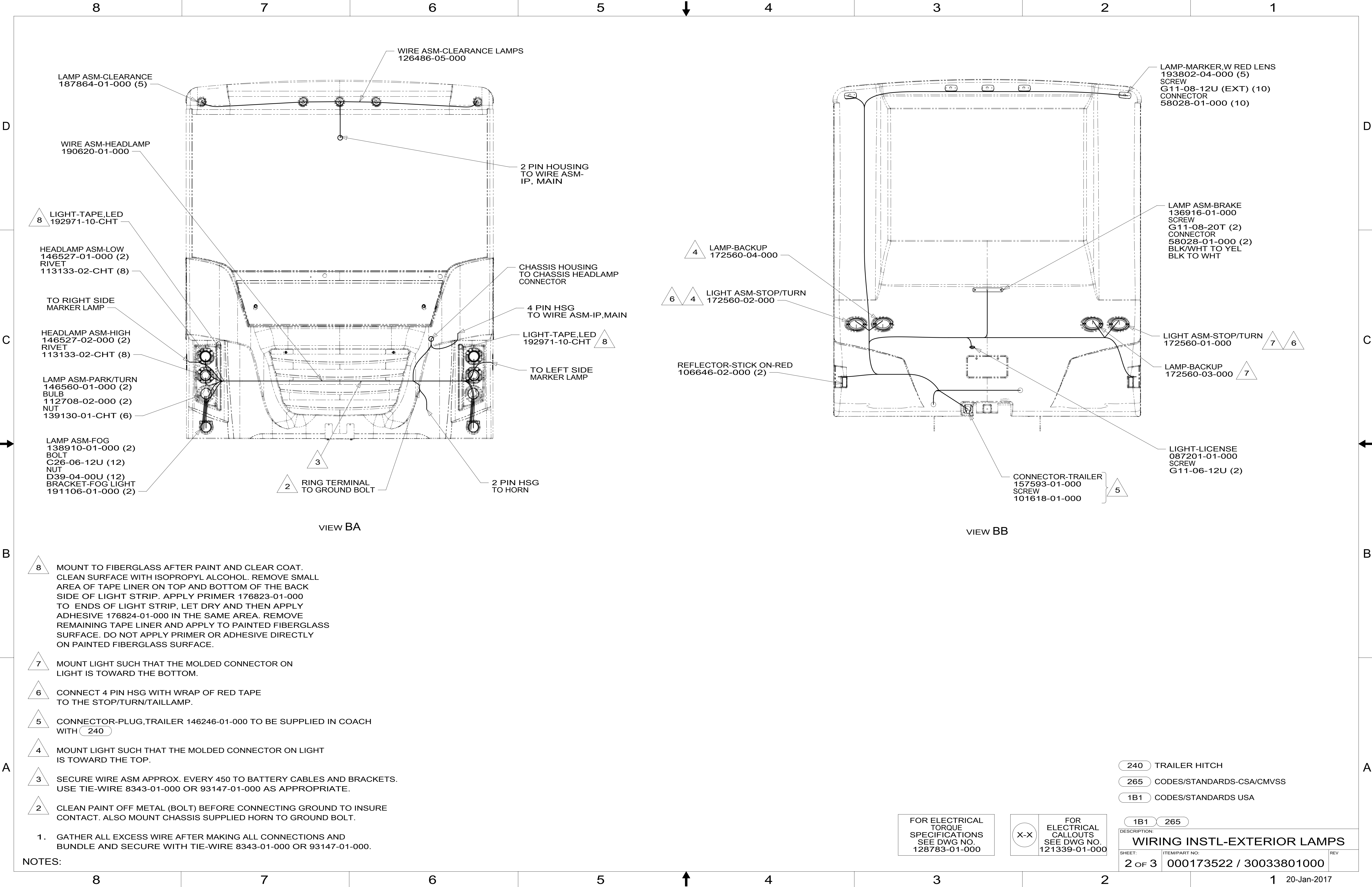
FOR
ELECTRICAL
CALLOUTS
SEE DWG NO.
121339-01-000

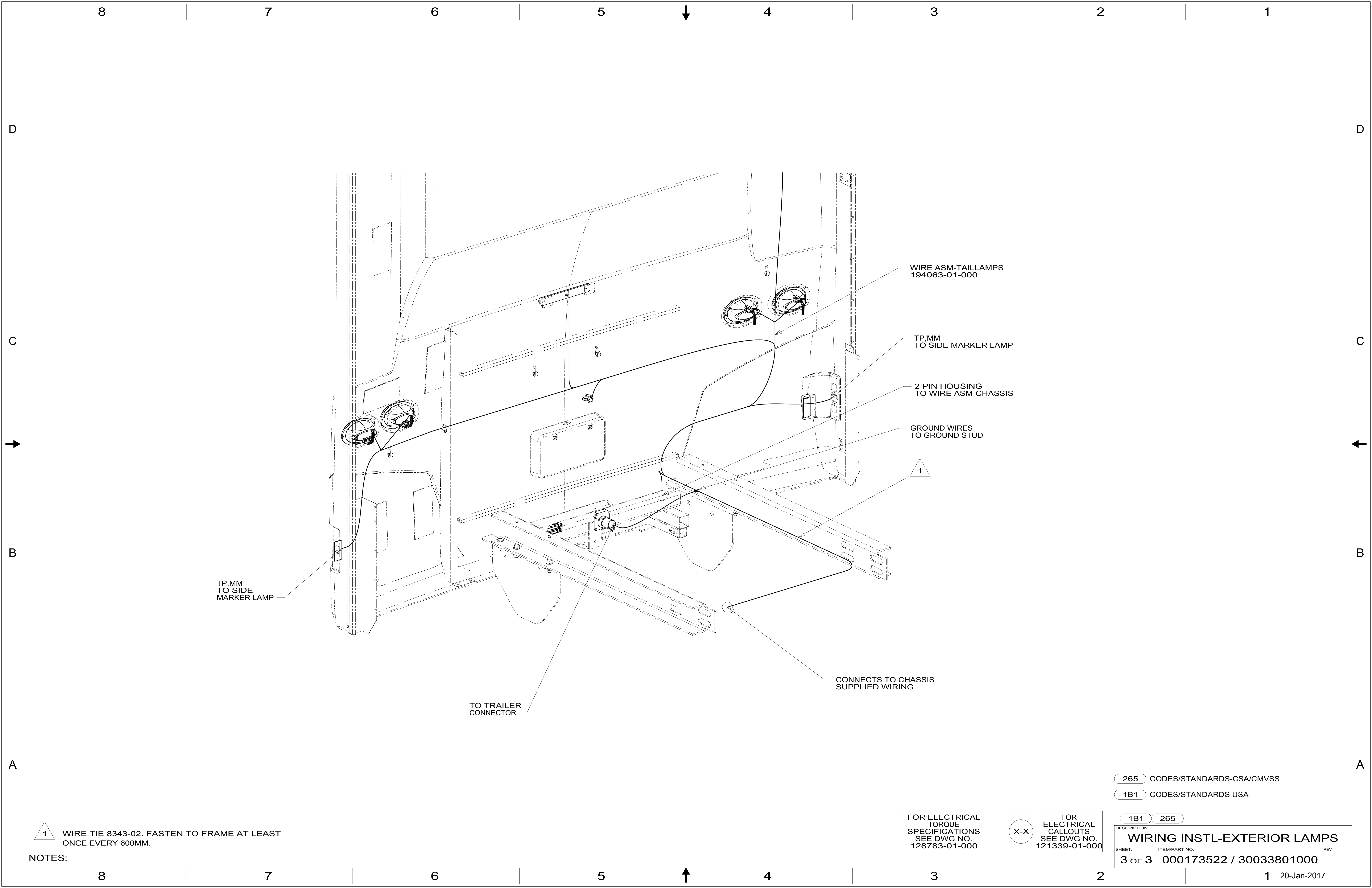
265 CODES/STANDARDS-CSA/CMVSS

1B1 CODES/STANDARDS-USA

1B1 265

<div>WINNEBAGO[®]</div> <div>COPYRIGHT 2016 WINNEBAGO INDUSTRIES, INC.</div>							
DSNR:			ALL DIMENSIONS ARE IN MILLIMETERS				
DFTR:							
UNSPECIFIED TOLERANCES:			MATERIAL:				
WHOLE DIM (X)	±	3					
ONE-PLACE (X.X)	±	1.5					
TWO-PLACE (X.XX)	±	0.50					
ANGLE	±	1°					
REFER TO ES0018 FOR FASTENER TIGHTENING GUIDELINES			WEIGHT: (LBS)	FIRST USED:			
			16 D36Z				
DESCRIPTION: WIRING INSTL-EXTERIOR LAMPS							
SHEET:		ITEM/PART NO:			REV		
1 OF 3		000173522 / 30033801000					





1 WIRE TIE 8343-02. FASTEN TO FRAME AT LEAST
ONCE EVERY 600MM.

NOTES:

FOR ELECTRICAL
TORQUE
SPECIFICATIONS
SEE DWG NO.
128783-01-000

FOR
ELECTRICAL
CALLOUTS
SEE DWG NO.
121339-01-000

265 CODES/STANDARDS-CSA/CMVSS

1B1 CODES/STANDARDS USA

1B1 265

DESCRIPTION:
WIRING INSTL-EXTERIOR LAMPS

SHEET: 3 OF 3	ITEM/PART NO: 000173522 / 30033801000	REV
-------------------------	---	-----

1 20-Jan-2017